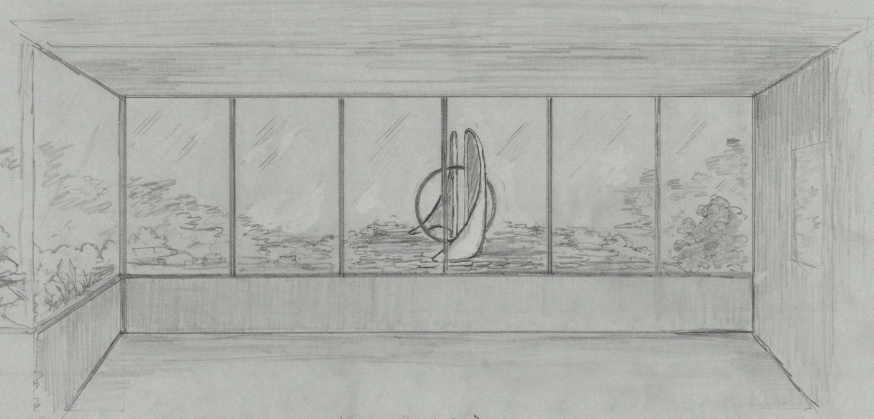


PLAN - SCALE $\frac{3}{8}'' = 1'-0''$



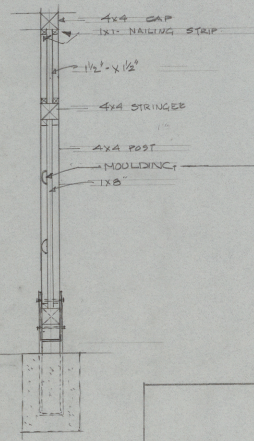
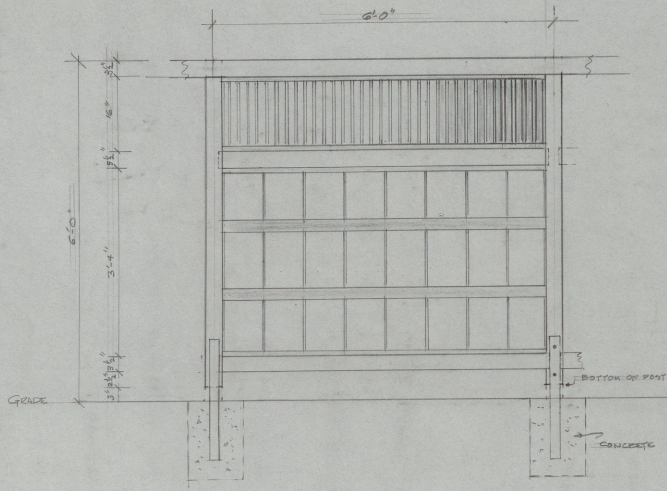
ELEVATION

WINDOW w/ SCULPTURE
SCALE $\frac{3}{8}'' = 1'-0''$

LANDSCAPING DETAILS 2016
THE DINING ROOM AREA
SALISHAN LODGE

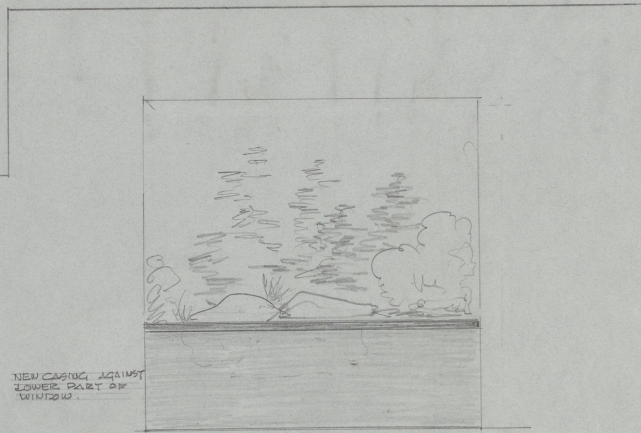
BARBARA FEALY - LANDSCAPE ARCHITECT.
JOB 86-8 3/17/86.



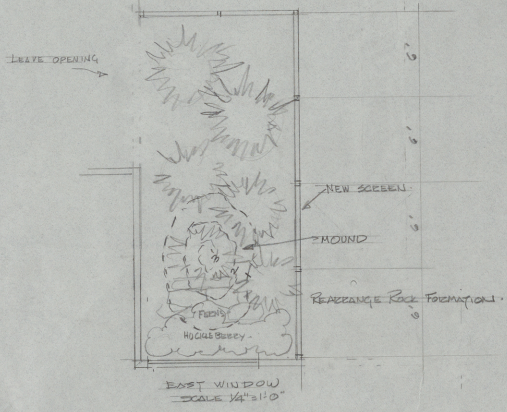


ACTUAL SIZE.
SECTION.
MODDING.

ELEVATION
SCREEN - OUTSIDE OF EAST WINDOW
THE DINING ROOM.
SCALE 1" = 1'-0"



ELEVATION - EAST WINDOW



EAST WINDOW
SCALE 1/4" = 1'-0"

EAST WINDOW LANDSCAPING DETAILS
SCREENING FENCE - PLANTING ETC

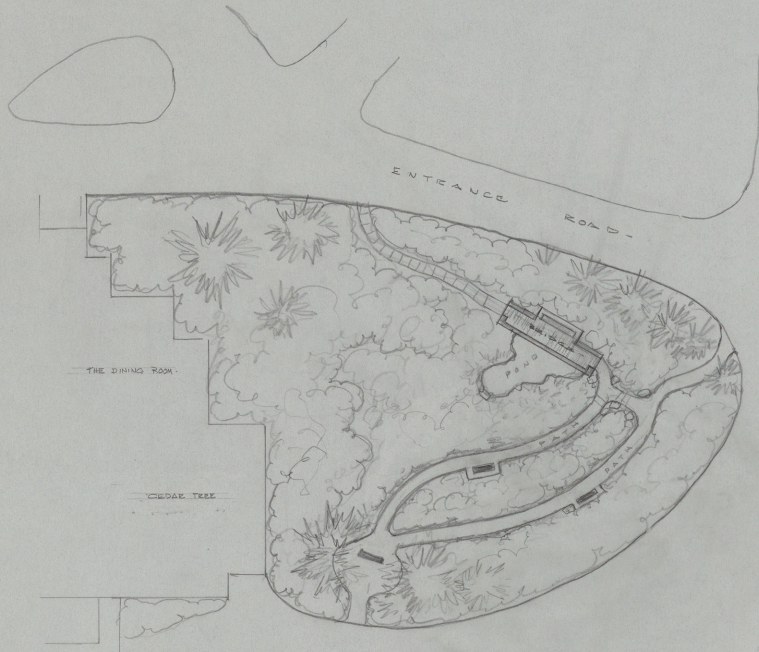
SALISHAN LODGE

BARBARA FEALY - LANDSCAPE ARCHITECT
4805 SW CHESTNUT PL BEAVERTON, OR 97005
PHONE - (503) 644-1231

3-8-86

JOB
86-8



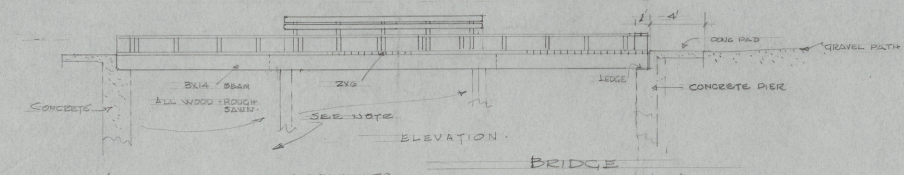
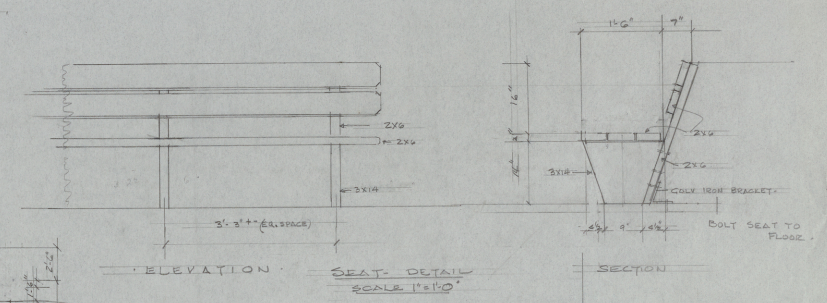
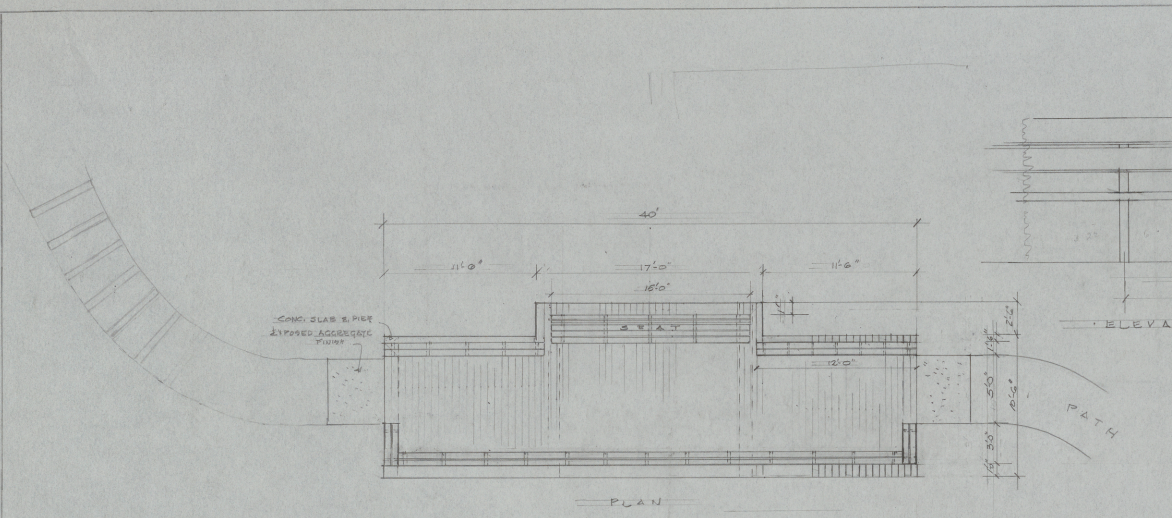


SKETCH OF RAVINE AREA
SCALE 1" = 20'

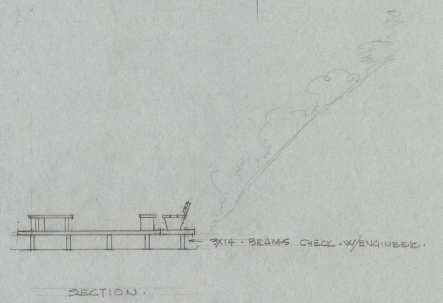


SITE PLAN FOR RAVINE	4.27.80
SALISHAN LODGE, QUEBECEN BEACH, OR.	JCB
BARBARA FEALY, LANDSCAPE ARCHITECT	80-B
1805 S.W. CHESTNUT PL., BEAVERTON, OR 97005	1
(503) 644-1231	





NOTE: STRUCTURAL DETAILS TO BE FURNISHED BY OTHERS -
- LOCATION OF BEAMS AND PIERS



PLAN FOR BRIDGE IN THE RAVINE AT
SALISHAN LODGE, GLENEDEN BEACH, OR 97388.
BARBARA FEALY, LANDSCAPE ARCHITECT
4805 S.W. CHESTNUT PL. BEAVERTON, OR 97005

4-28-86
JOB
86-8
2





PRELIMINARY PLAN FOR LANDSCAPE DEVELOPMENT
SALISHAN LODGE (114-000101)
GLENEDEN BEACH - OREGON

BARBARA FEALY-MARLENE SALON LANDSCAPE ARCHITECTS
4805 SW CHESTNUT PL. BEAVERTON, OREGON 97005

SCALE 1/8" = 1'-0"

02/08/87 12:13:07



SCHEMATIC EDGE OF EXISTING VEGETATION
LANDSCAPE CONTRACTOR TO VERIFY THIS BOUNDARY
A-1 SITE NEAR LANDSCAPING TO COVER ALL
DISTURBED GROUND

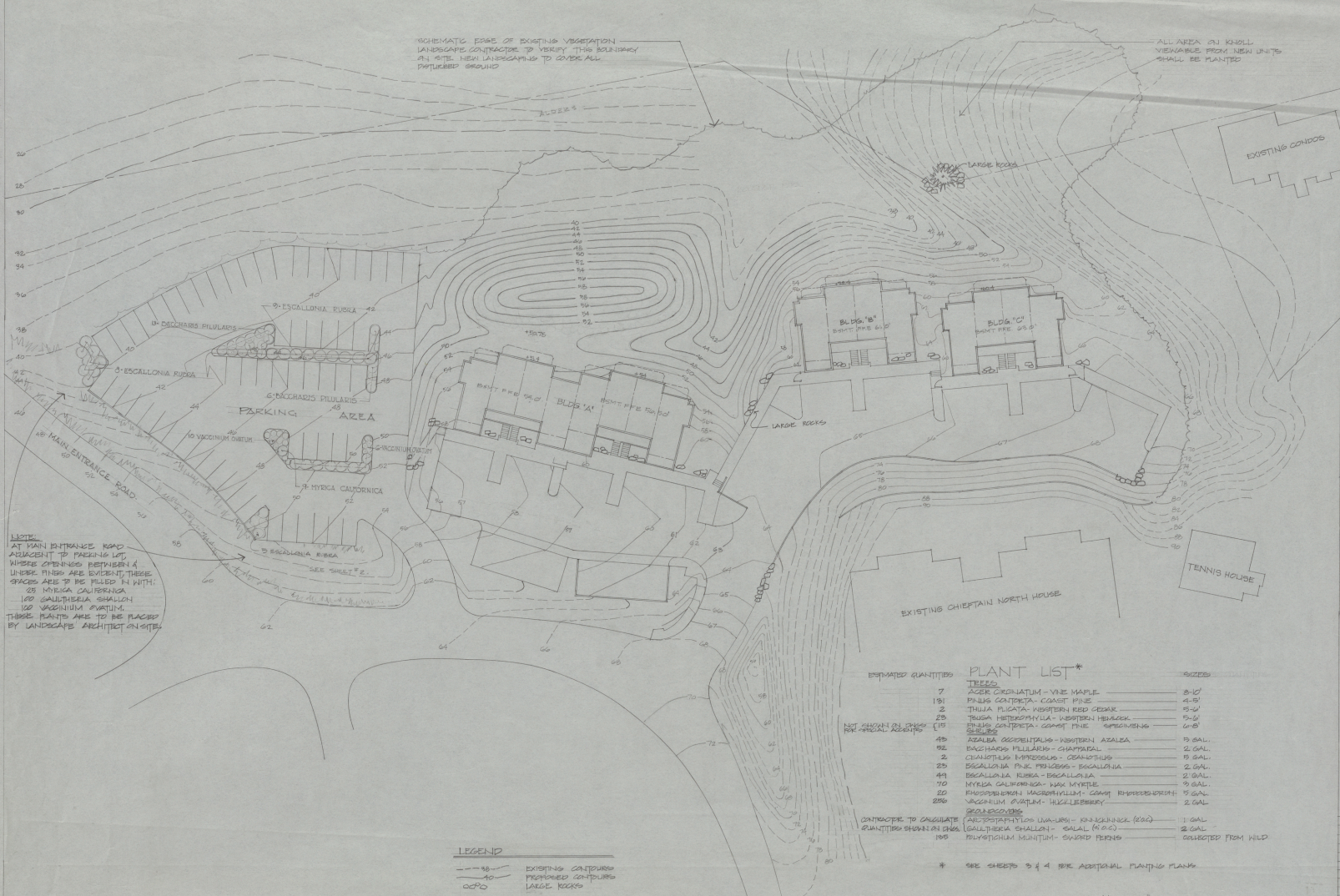
ALL AREA IN KNOLL
VIEWABLE FROM NEW UNITS
SHALL BE PLANTED

REGISTERED
LANDSCAPE
ARCHITECT
BARBARA FEALY
10000 SW CHESTNUT PL
BEAVERTON, OR 97005
PH. 503-644-1891

BARBARA FEALY - PEGGA - MARLENE SALON
LANDSCAPE ARCHITECTS
10000 SW CHESTNUT PL
BEAVERTON, OR 97005
PH. 503-644-1891

SITE PLAN & GRADING PLAN
SALISHAN LODGE
GLENDELEN BEACH, OREGON

DATE: 11-17-87
JOB NO. 87-36



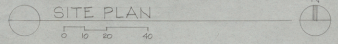
NOTE:
AT MAIN ENTRANCE ROAD
ADJACENT TO PARKING LOT,
WHERE OPENINGS BETWEEN A
LARGE TREES ARE EXISTENT, THESE
SPACES ARE TO BE FILLED IN WITH:
25 MYRTLE CALIFORNICA
100 GALLIHERIA SPICATUM
100 VACCINIUM SPICATUM
THESE PLANTS ARE TO BE PLACED
BY LANDSCAPE ARCHITECT ON SITE

LEGEND
--- 40 --- EXISTING CONTOURS
--- 40 --- PROPOSED CONTOURS
○○○○ LARGE ROCKS

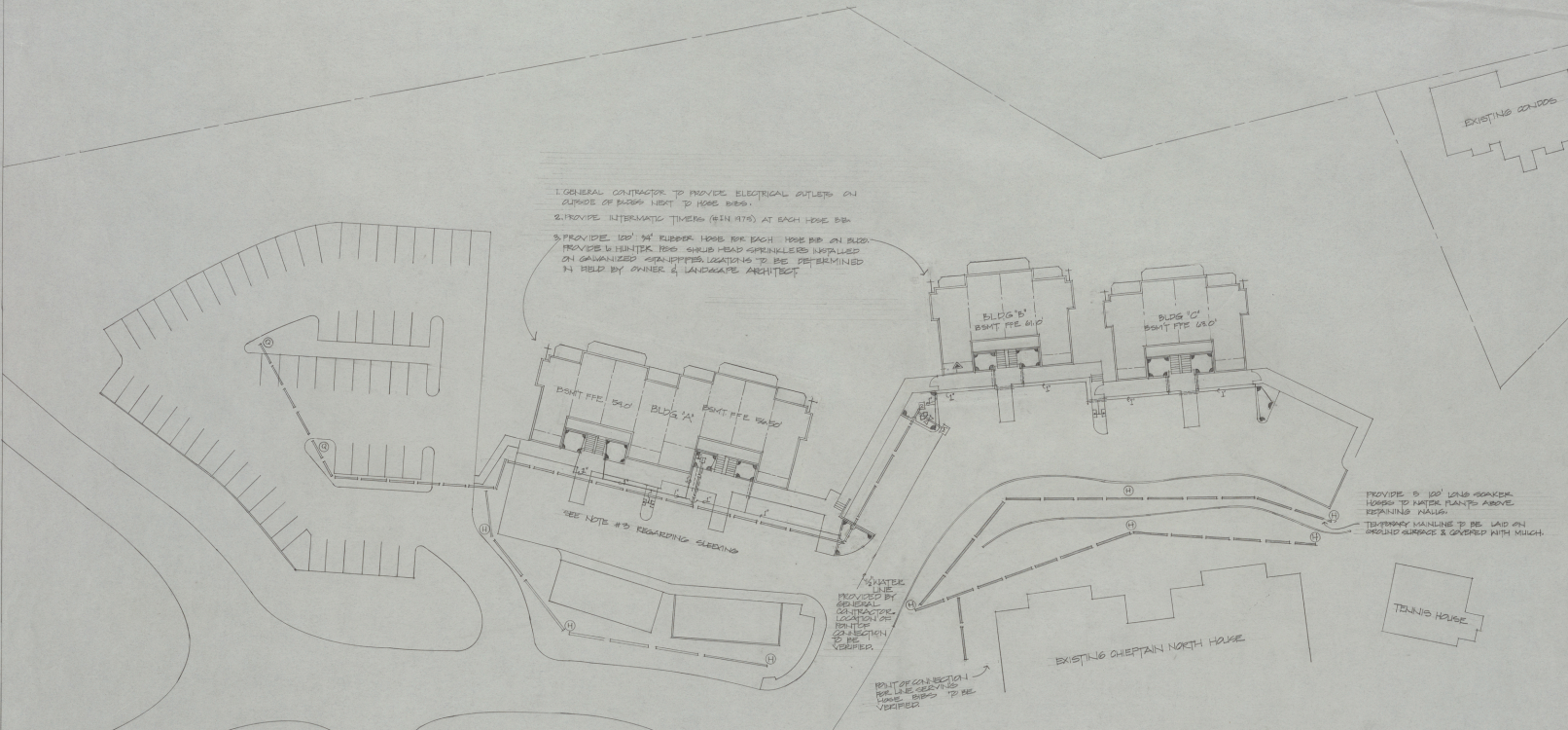
ESTIMATED QUANTITIES

PLANT LIST*	SIZES
7 ACER CIRCINATUM - VIE MAPLE	3-17
191 PINUS CONTRECTA - COAST PINE	4-50
2 THUJA PLICATA - NORTHERN RED CEDAR	5-6
2 TRIFOLIUM HYDRANGEAE - NORTHERN HEDERA	5-6
191 PINUS CONTRECTA - COAST PINE	SPRINGING
150 AZALEA OCCIDENTALIS - NORTHERN AZALEA	5 GAL.
80 RHOCHORS PILLARIS - CHAMPAGNE	2 GAL.
2 GYNERIUM HIRSUTUM - GYNERIUM	15 GAL.
25 ESCALONIA PINK PEBBLES - ESCALONIA	2 GAL.
49 ESCALONIA RUBRA - ESCALONIA	2 GAL.
70 MYRTLE CALIFORNICA - HAW NUTS	5 GAL.
20 RHOCHORS PILLARIS - COAST RHOCHORS	5 GAL.
250 VACCINIUM SPICATUM - HUCKLEBERRY	2 GAL.
CONTRACTOR TO CALCULATE QUANTITIES SHOWN IN THIS PLAN	1 GAL. (ALCOSTAPHYLOS LIXARIUM - KNEEKNICK (800)) 2 GAL. (GALLIHERIA CHALLEN - GALLI (800)) COLLECTED FROM WILD

* SEE SHEETS 5 & 4 FOR ADDITIONAL PLANTING PLANS



17



1. GENERAL CONTRACTOR TO PROVIDE ELECTRICAL OUTLETS ON SURFACE OF BLDG HIET TO HOSE BIBS.
2. PROVIDE AUTOMATIC TIMERS (#14N 1718) AT EACH HOSE BIB.
3. PROVIDE 1/2" 90° RUBBER HOSE FOR EACH HOSE BIB ON BLDG. PROVIDE 1/2" HINTER HOSE GROUND HEAD SPRINKLERS INSTALLED ON GALVANIZED SCHEDULE 40 PIPE. LOCATIONS TO BE DETERMINED BY FIELD BY OWNER & LANDSCAPE ARCHITECT.

PROVIDE 1/2" LONG 1/2" GARDER HOSES TO WATER PLANTS ABOVE TERRAZZO VALVE.
 TEMPORARY MAINLINE TO BE LAID ON GROUND SURFACE & COVERED WITH MULCH.

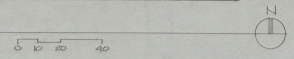
WATER LINE PROVIDED BY GENERAL CONTRACTOR. LOCATIONS OF HINTER CONNECTIONS TO BE VERIFIED.
 POINT OF CONNECTION FOR LINE SERVING THIS HOUSE TO BE VERIFIED.

SEE NOTE #10 REGARDING SLEEVING

- NOTES:
1. VERIFY LOCATION OF CONTROLLER, BACK FLOW PREVENTER, VALVES & VALVE BOXES, QUICK COUPLERS, HOSE BIBS WITH OWNER & LANDSCAPE ARCH. PRIOR TO INSTALLATION.
 2. INSTALL PRESSURE REGULATORS IF PRESSURE EXCEEDS 40 PSI AT POINT OF CONNECTION.
 3. INSTALL PVC SLEEVING UNDER ALL CONCRETE SURFACES AND CURBS. SLEEVING ILLUSTRATED ON DRAWING IS NOT COMPLETE. SLEEVING TO BE PROVIDED BY CONTRACTOR.
 4. INSTALL 1/2" AND AUTOMATIC DRAIN VALVES AT ALL LOW POINTS OF LATERALS.
 5. INSTALL MANUAL DRAIN VALVE UPSTREAM FROM BACKFLOW PREVENTER.
 6. ALL PIPE AND FITTINGS ABOVE GRADE SHALL BE GALVANIZED

LEGEND

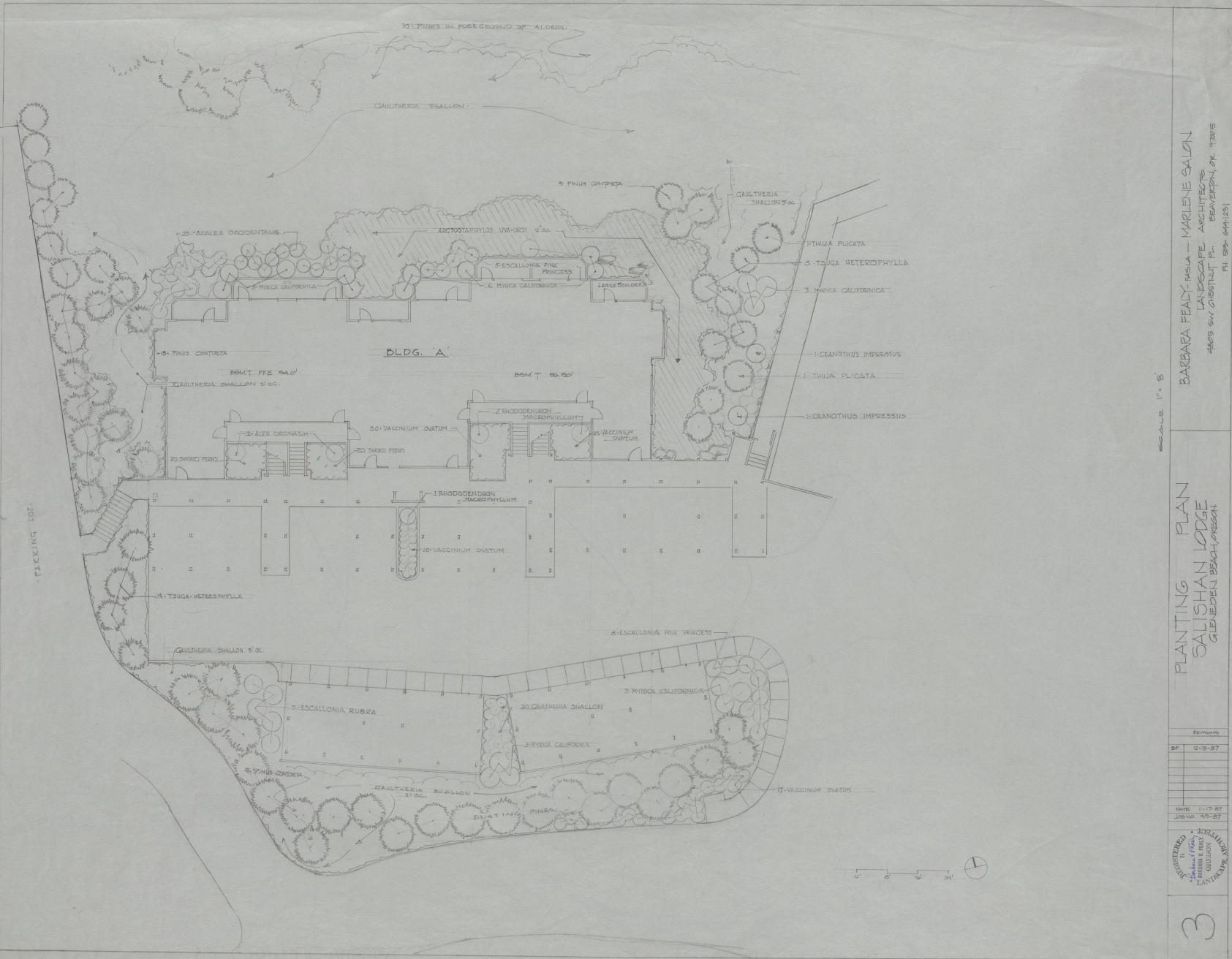
SYMBOL	DESCRIPTION	PERFORMANCE ACC. RADIUS @ PM @ 100 PSI
▲	RAINBOW 1/2" x 1/2" 1/2" 1/2"	120' 12" 130' 90'
●	" " " " " " " "	120' " " 80' "
■	" " " " " " " "	120' " " 90' " 40' "
□	RAINBOW 1/2" x 1/2" 1/2" 1/2"	120' 1/2" 170' "
▭	PVC SCHEDULE 40 MAINLINE - 1/2" SIZE TYPICAL	
▭	PVC SCHEDULE 40 LATERAL LINE - 1/2" UNLESS OTHERWISE NOTED	
▭	PVC SCHEDULE 40 SLEEVING AT TYPICAL	
+	HOSE BIB ON BLDG A, B, C TO BE OULDED BY GENERAL CONTRACTOR	
+	HOSE BIB ON GALVANIZED MAINLINE	
⊙	QUICK COUPLER VALVE - RAINBOW 1/2" 1/2"	
⊙	MANUAL ONE 1/2" VALVE - SCHEDULE 40 1/2" SIZE	
⊙	REGULATED PRESSURE - 1/2" 1/2" 1/2"	
⊙	BRONZE GATHER VALVE WITH 2" x 1/2" REGULATION BEARING MATIC 7024 B 1/2" 1/2" SIZE	
⊙	AUTOMATIC CONTROLLER - RAINBOW 1/2" 1/2"	
⊙	WATER METER	
⊙	TEMPORARY MAINLINE - 1/2" SIZE PVC CLASS 200 TO BE LAID ON SURFACE OF SLEEVING	



DESIGNED BY
 12-10-87
 1-11-88

DATE 12-10-87
 JOB NO. 87-56

2



SCALE 1" = 6'

PLANTING PLAN
SALISHAN LODGE
GLENEDEN BEACH, OREGON

BARBARA FEATY-PAEA — MARLENE BALON
LANDSCAPE ARCHITECTS
4505 SW CHESTNUT PL.
BEAVERCREEK, OR 97005
PH 503 644-1251

REVISIONS
RF 11-8-87

DATE 11-17-87
JOB NO. 95-87



3





BARBARA HEADY, P.L.A. - MARLENE SALON
 LANDSCAPE ARCHITECTS
 4805 9th STREET PL.
 BEVERLY HILLS, CA 91605
 PH. 805-444-8911

PLANTING PLAN
 SALISHAN LODGE
 GLENDELE BEACH, CALIFORNIA

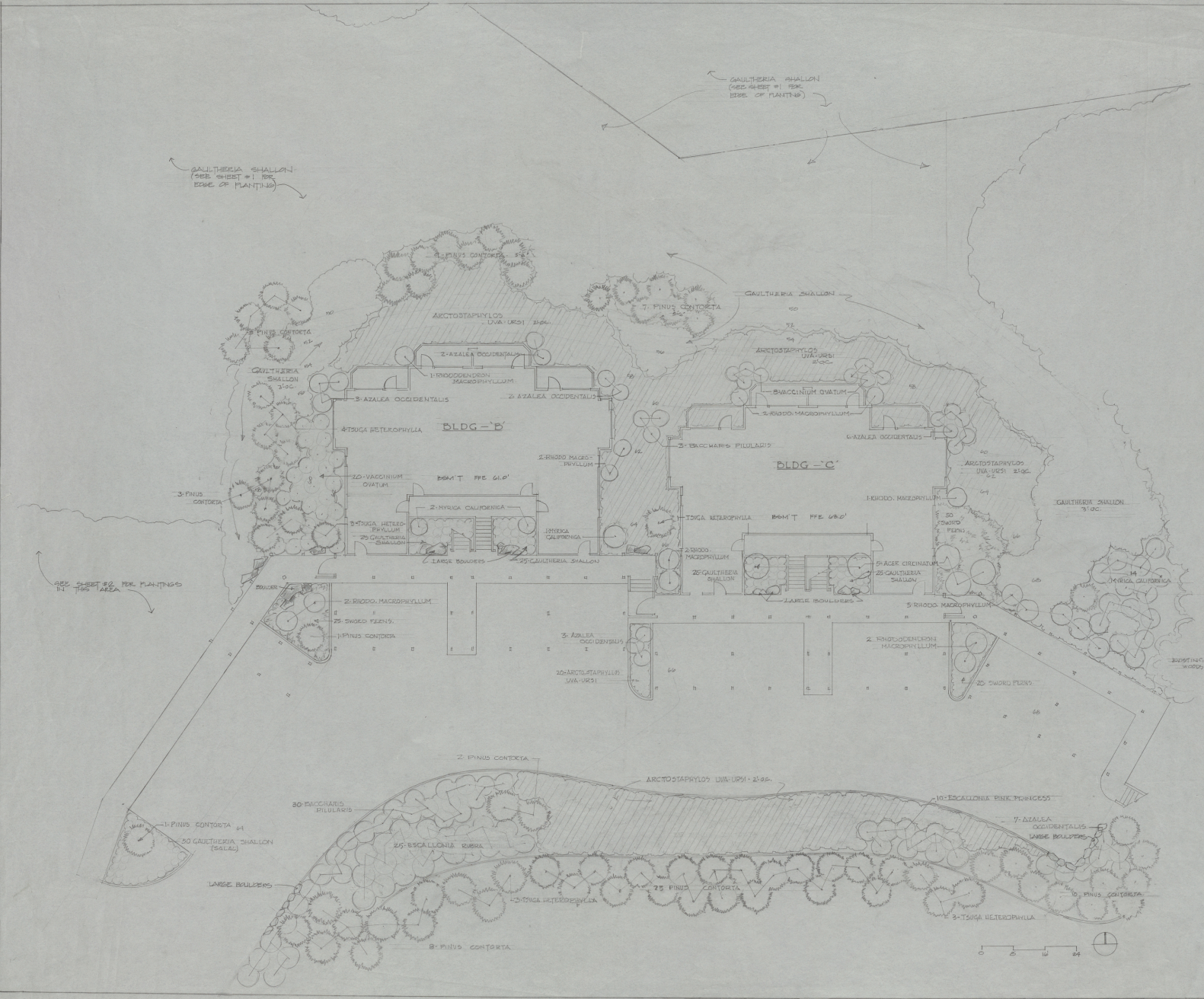
REVISIONS

No.	DATE
1	12-11-87
2	12-18-87
3	1-11-88

SHEET 11 OF 27
 12-11-87



4



GAULTHERIA SHALLOON
 (SEE SHEET #1 FOR
 EDGE OF PLANTING)

GAULTHERIA SHALLOON
 (SEE SHEET #1 FOR
 EDGE OF PLANTING)

SEE SHEET #2 FOR PLANTINGS
 IN THE AREA

