

OSU SUMMER SESSION 2010



Planning Guide

Information & course listing to plan your summer

Catch up · Speed up · Jump ahead

This summer...

- Choose from one, three, four, eight or 11-week sessions
- Stay on track for graduation
- Complete prerequisites or bacc core requirements
- Finish a full three-course sequence in one summer
Choose from subjects such as Spanish, biology, chemistry, physics, and more!
- Enjoy smaller class sizes
- Enhance your professional skills and credentials
- **Save! Everyone pays in-state tuition**

Need a flexible schedule?

Explore the variety of courses offered online (*see back cover*).

Schedule of classes available online!

Registration begins Sunday, April 11

Most classes start Monday, June 21

What's in this Summer Planning Guide?

Summer Calendar.....	1, 6
Admission	1
Advising Information.....	2
Registration.....	2
Course Listing.....	3-4
Tuition & Fees.....	5
Financial Aid.....	6
Housing & Dining.....	6
Summer Quick Links	6
OSU Ecampus-Online Classes.....	Back Cover

Connect with OSU Summer Session



Find us on
Facebook



Follow us on
twitter



2010 Summer Session Calendar

Web Registration Begins
Sunday, April 11

Session 6 (Jun 14 - Jun 18)
1-Week Intersession/Zero Week

Session 1 (Jun 21 - Sep 3)
11-Week Session

Session 2 (Jun 21 - Jul 16)
First 4-Week Session

Session 3 (Jun 21 - Aug 13)
8-Week Session

Independence Day (Holiday)
No classes Monday, July 5

Session 4 (Jul 19 - Aug 13)
Second 4-Week Session

Session 5 (Aug 16 - Sep 3)
3-Week Session

Labor Day (Holiday)
No classes Monday, September 6

Classes Run
June 14-September 3

See page 2 for
Add/Drop Deadlines

summer.oregonstate.edu

Admission

summer.oregonstate.edu/new-visiting/admission/overview.htm

Current OSU students (degree/non-degree-seeking) who are in good academic standing and are registered for credit courses during the academic year do not need to apply for admission to Summer Session. Just register as you would for any other term. You can attend Summer Session unless you have been academically suspended from the university. There are no special admission requirements and no application forms.

New OSU students (degree-seeking) who plan to complete an OSU degree and have not been admitted should review and carefully follow the online admission procedures for *first-year* or *transfer* students at oregonstate.edu/admissions. Those who have applied and been admitted for fall term but want to get an early start by taking summer courses need to contact the Office of Admissions.

Visiting students (non-degree-seeking) will need to submit a non-degree application form online*. A \$25 nonrefundable application fee will be charged at the time of submission. Formal admission isn't required, so there's no need to submit transcripts. You will be notified by email when your application has been processed. During summer term, all visiting students pay in-state tuition. It's important to note, however, that enrolling in Summer Session courses does not constitute admission to Oregon State University as a degree-seeking student. Students who are seeking degrees from other colleges or universities should check with their respective institution on the possibility of transferring credit earned from Oregon State University. Non-degree students do not qualify for financial aid; see website* for more info.

High school students who meet the prerequisites for individual courses are eligible to enroll. For more information, call the Summer Session office at 541-737-1470 or 800-375-9359.

*Non-degree student admission:

oregonstate.edu/admissions/nondegree/information.html

Admission questions:

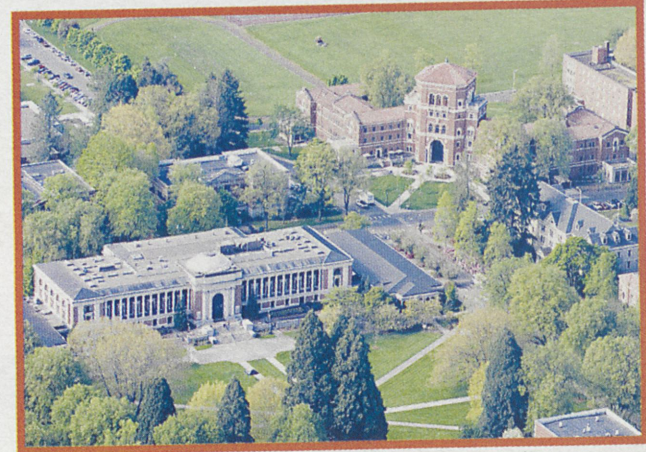
541-737-4411

Office of Admissions

104 Kerr Administration Building

Email: osuadmit@oregonstate.edu

Web: oregonstate.edu/admissions



Orientation Program - START

New incoming degree-seeking undergraduate students starting summer term will need to participate in the START program offered by New Student Programs & Family Outreach. The START program will provide you with valuable information and resources including academic presentations and advising. Students who participate in START receive their registration PIN for fall term. More information about START is available at: oregonstate.edu/newstudents/newstudent.html

Tips for Summer Session 2010 Catch up · Speed up · Jump ahead

Get familiar with Summer Session by April 1

Check into course selections and meet with your advisor early to determine how summer courses might improve your academic plan.

Don't overload your Summer Session schedule

Although classes will likely be smaller and the atmosphere may feel more relaxed, keep in mind most summer courses pack 11 weeks (a regular academic term) of material into a shorter time frame, like 8-, 4-, 3- or even 1-week sessions. Make sure you budget your schedule wisely.

Remember: 1 hour of classroom time = 2 hours of study/homework time.

Use student resources during Summer Session

Be sure to utilize these services supported by your student fees: Academic Success Center, Computer Labs, The Valley Library, Dixon Recreation Center, Student Health Services and many more. Visit: summer.oregonstate.edu/new-visiting/orient

Get advising help

Even if your advisor is not available during the summer, alternate advisors are available to assist you (see page 2).

Watch add/drop deadline dates

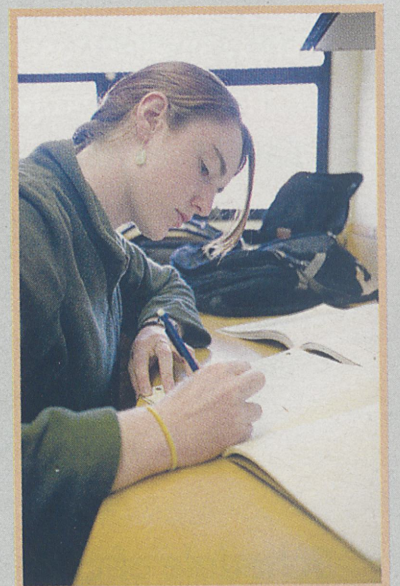
Summer Session has six different sessions ranging in length from one week to 11 weeks. This means that a four-week course has a drop date two days after the course begins (see page 2).

Access and timing is everything

Many students enjoy the opportunity to utilize the summer to complete courses they were unable to enroll in during the academic year. Plus, there's usually an increase in overall concentration level when you are focusing on only one or two courses at any given time. See what students are saying: summer.oregonstate.edu/profiles/students

One-stop shopping

Visit Summer Session's Advisor & Faculty Resource web page for links to commonly needed information: summer.oregonstate.edu/advisors

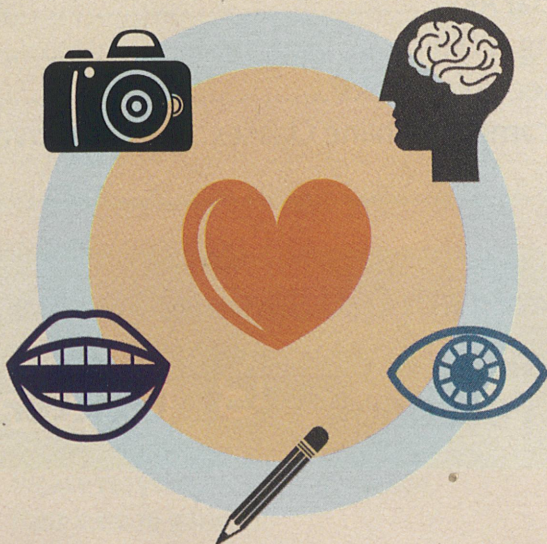


Enter to Win! Best of Summer Session 2010

This summer we'll be collecting photo and video submissions in a variety of Best of Summer Session categories, such as best place to study, best place to grab a bite to eat, best place to hike and more!

The winner in each category, voted on by our Facebook fans, receives a \$50 gift card and a feature on the Summer Session website.

Visit summer.oregonstate.edu/bestof for more details!





Registration

summer.oregonstate.edu/new-visiting/register

- Quick and easy registration on the Web
- No transcripts or letters of recommendation required
- Web registration and schedule adjustments begin April 11, 2010

Maximum Credit Loads

Fully admitted undergraduates may register for up to 19 credits and graduates up to 16 credits. Additional credits may be added, within the guidelines of the academic regulations, by contacting the Registrar's Office.

New degree-seeking students admitted starting summer term will be assessed a one time Matriculation Fee of \$300 after the completion of registration for classes.

Register early and avoid late registration fees! A late registration fee of \$50 will be assessed for all registrations after each session begins. See the chart below for specific dates.

Important Registration Deadlines and Related Dates

	Session 6 1 week Jun 14-18	Session 1 11 weeks Jun 21-Sep 3	Session 2 1st 4 weeks Jun 21-Jul 16	Session 3 8 weeks Jun 21-Aug 13	Session 4 2nd 4 weeks Jul 19-Aug 13	Session 5 3 weeks Aug 16-Sep 3
Registration Begins	April 11	April 11	April 11	April 11	April 11	April 11
Deadline to Cancel Registration	June 13	June 20	June 20	June 20	July 18	Aug 15
Classes Begin Last Day to Register Without Late Fees	June 14	June 21	June 21	June 21	July 19	Aug 16
Fees Charged Late Registration	June 15	June 22	June 22	June 22	July 20	Aug 17
Last Day to: Add, Drop, Audit S/U, Withdraw Course Withdraw from University	June 14 June 15 June 16	July 6 Aug 6 Aug 27	June 23 July 7 July 14	June 30 July 22 Aug 11	July 21 Aug 4 Aug 11	Aug 11 Aug 26 Sep 1
Classes End	June 18	Sep 3	July 16	Aug 13	Aug 13	Sep 3
Grades Available	June 23, July 21	Sep 8	July 21	Aug 18	Aug 18	Sep 8

- (1) To determine which dates to follow, locate the session number for the course(s) you want to take in the course listings. Follow the appropriate session dates above.
- (2) Students may only withdraw from the university for the session in which they are currently enrolled. Students who withdraw from the university for a session will receive W grades in all classes for that session.

Registration information:

541-737-4331

Registrar's Office

102 Kerr Administration Building

Email: registrars@oregonstate.edu

Web: oregonstate.edu/registrar



©Larry Geddis

New to Summer Session? Take our Online Summer Orientation!

Designed for students unfamiliar with Summer Session, it's the perfect way to start planning for summer. Whether you're thinking of taking OSU summer courses or want more information about Summer Session, check out our website:

summer.oregonstate.edu/orientation



Want some advice on classes?

All OSU degree-seeking students are strongly encouraged to seek academic advising before registering. Advisors can help you find the right classes for your interests or needs, sort out prerequisites, or find alternatives if the class you want is not offered. The advising offices for each college are listed below.

Agricultural Sciences

137 Strand Agriculture Hall, 541-737-2211

Email: casstudy@oregonstate.edu

Business

214 Bexell Hall, 541-737-3716

Email: studentservices@bus.orst.edu

Education

210B Education Hall, 541-737-4661

Email: askcoed@oregonstate.edu

Engineering

151 Batcheller Hall, 541-737-5236

Email: askengineering@oregonstate.edu

Forestry

140 Peavy Hall, 541-737-1594

Email: forestinfo@oregonstate.edu

Graduate School

300 Kerr Admin Bldg., 541-737-4881

Email: graduate.school@oregonstate.edu

Health & Human Sciences

116 Milam Hall, 541-737-8900

Email: hhs@oregonstate.edu

Liberal Arts

213 Gilkey Hall, 541-737-0561

Email: LiberalArts@oregonstate.edu

Oceanic & Atmospheric Sciences

104 COAS Admin Bldg., 541-737-5188

Email: student_advisor@coas.oregonstate.edu

Pharmacy

203 Pharmacy Bldg., 541-737-3424

Email: pharmacy@oregonstate.edu

Science

128 Kidder Hall, 541-737-4811

Email: science@oregonstate.edu

University Exploratory Studies Program

101 Waldo Hall, 541-737-8144

Email: uesp.advisor@oregonstate.edu

University Honors College

229 Strand Agriculture Hall, 541-737-6400

Email: honors.college@oregonstate.edu

Veterinary Medicine

200 Magruder Hall, 541-737-2098

Email: patrick.kamins@oregonstate.edu

Summer Session

Oregon State University

4943 The Valley Library

Corvallis, OR 97331-4504

Phone: 541-737-1470 or 800-375-9359

Fax: 541-737-2734

Email: summer.session@oregonstate.edu

summer.oregonstate.edu

Oregon State University is committed to affirmative action and equal opportunity and complies with Section 504 of the Rehabilitation Act of 1973.

This publication will be made available in accessible format upon request. Call 541-737-1470.

Tuition & Fees

summer.oregonstate.edu/tuition

Everyone pays in-state tuition during summer term! Below is the 2010 tuition chart.

Summer Session 2010 Tuition Chart **

Credit Hours	1*	2	3	4	5	6	7	8	9	Additional
Undergraduate	\$484.55	\$615.55	\$746.55	\$877.55	\$1,008.55	\$1,139.55	\$1,270.55	\$1,401.55	\$1,532.55	+ \$131/cr
Graduate	\$600.55	\$835.55	\$1,070.55	\$1,305.55	\$1,540.55	\$1,775.55	\$2,010.55	\$2,245.55	\$2,480.55	+ \$235 or \$230/cr

Additional undergraduate credits: \$131 per credit.

Additional graduate credits: \$235 per credit (for credits above 9) and \$230 per credit (for credits above 18).

See notes below Summer Session 2010 Tuition Chart (Combined) for more details on tuition figures, fee exceptions and assessments of fees for online and distance courses.

For students taking a combination of undergraduate and graduate courses this summer, use the combined tuition chart and instructions below.

To calculate your summer tuition:

1. Determine the number of undergraduate and graduate credits you are registering for.
2. Find the corresponding numbers on the schedule (in bold across the top and down the left side).
3. Read across the schedule to find the dollar figure corresponding to the number of credits you wish to take.

Example (shaded): If you wish to take 6 undergraduate credits and 3 graduate credits, the amount you would pay is \$1,856.55.

Summer Session 2010 Tuition Chart (Combined) **

		Graduate Credits (Course level 500+)									
		0	1*	2	3	4	5	6	7	8	9
Undergraduate Credits (Course level 100-499)	0		\$600.55	\$835.55	\$1,070.55	\$1,305.55	\$1,540.55	\$1,775.55	\$2,010.55	\$2,245.55	\$2,480.55
	1*	\$484.55	\$731.55	\$966.55	\$1,201.55	\$1,436.55	\$1,671.55	\$1,906.55	\$2,141.55	\$2,376.55	\$2,611.55
	2	\$615.55	\$862.55	\$1,097.55	\$1,332.55	\$1,567.55	\$1,802.55	\$2,037.55	\$2,272.55	\$2,507.55	\$2,742.55
	3	\$746.55	\$993.55	\$1,228.55	\$1,463.55	\$1,698.55	\$1,933.55	\$2,168.55	\$2,403.55	\$2,638.55	\$2,873.55
	4	\$877.55	\$1,124.55	\$1,359.55	\$1,594.55	\$1,829.55	\$2,064.55	\$2,299.55	\$2,534.55	\$2,769.55	\$3,004.55
	5	\$1,008.55	\$1,255.55	\$1,490.55	\$1,725.55	\$1,960.55	\$2,195.55	\$2,430.55	\$2,665.55	\$2,900.55	\$3,135.55
	6	\$1,139.55	\$1,386.55	\$1,621.55	\$1,856.55	\$2,091.55	\$2,326.55	\$2,561.55	\$2,796.55	\$3,031.55	\$3,266.55
	7	\$1,270.55	\$1,517.55	\$1,752.55	\$1,987.55	\$2,222.55	\$2,457.55	\$2,692.55	\$2,927.55	\$3,162.55	\$3,397.55
	8	\$1,401.55	\$1,648.55	\$1,883.55	\$2,118.55	\$2,353.55	\$2,588.55	\$2,823.55	\$3,058.55	\$3,293.55	\$3,528.55
	9	\$1,532.55	\$1,779.55	\$2,014.55	\$2,249.55	\$2,484.55	\$2,719.55	\$2,954.55	\$3,189.55	\$3,424.55	\$3,659.55
	10	\$1,663.55	\$1,910.55	\$2,145.55	\$2,380.55	\$2,615.55	\$2,850.55	\$3,085.55	\$3,320.55	\$3,555.55	xxxx
	11	\$1,794.55	\$2,041.55	\$2,276.55	\$2,511.55	\$2,746.55	\$2,981.55	\$3,216.55	\$3,451.55	xxxx	xxxx
	12	\$1,925.55	\$2,172.55	\$2,407.55	\$2,642.55	\$2,877.55	\$3,112.55	\$3,347.55	xxxx	xxxx	xxxx

Additional undergraduate credits: \$131 per credit. Additional graduate credits: \$235/\$230 per credit.

Note: The figures above include tuition plus incidental, building, health services, technology, registration and Summer Session administrative* fees. Additional fees may accompany specific courses and degree-seeking programs or be assessed as noted in the online Schedule of Classes. See Summer Session website for additional tuition and fee details.

* The first credit hour of tuition includes a \$34 Summer Session administrative fee which is not subject to remission.

** Fees for online and distance courses offered through OSU Extended Campus are assessed separately. Contact OSU Extended Campus (back cover) or refer to the course listings at ecampus.oregonstate.edu/soc/.

Tuition/Fee Reduction & Refund Schedule

All course load reductions, including dropping or withdrawing from a class or withdrawal from the university, are subject to the following refund schedule:

For Classes Starting June 21 (8-week courses)

Before the first day of classes	100%	June 20
By close of add/drop period	100%	June 30
Course withdrawal first week after add/drop period	50%	July 7
Course withdrawal second week after add/drop period	25%	July 14

For Classes Starting June 21 (11-week courses)

Before the first day of classes	100%	June 20
By close of add/drop period	100%	July 6
Course withdrawal first week after add/drop period	50%	July 12
Course withdrawal second week after add/drop period	25%	July 19

For Classes That Last Less Than 8 Weeks

Refund is:	100%	50%	25%
If course is dropped:	before close of*	before close of*	before close of*
1 week	2nd day	3rd day	4th day
2 week	3rd day	4th day	5th day
2.6 week (Foreign Languages)	3rd day	5th day	7th day
3 week	3rd day	5th day	7th day
4 week	3rd day	6th day	8th day
5 week	6th day	9th day	12th day
6 week	7th day	10th day	13th day
7 week	8th day	12th day	16th day

*Deadlines refer to the number of calendar days, beginning with the first class meeting and excluding Saturdays, Sundays, and holidays.

Note: Students who withdraw from the university for the Summer Session will receive W grades in ALL Summer Session courses that have not been completed.



Summer at Oregon State

With OSU Summer Session comes the excitement, beauty, and versatility of Western Oregon. Around the Willamette Valley, you'll find cultural festivals, art and craft shows, music festivals, community celebrations, and open-air markets every week. The July 4th Red, White & Blue Riverfront Festival and the mid-July da Vinci Days celebration are big events involving the Corvallis community and the Oregon State University campus.

OSU is one of only two American universities to hold the Land Grant, Sea Grant, Sun Grant, and Space Grant designation and is a Carnegie Doctoral/Research-Extensive university. OSU is located in Corvallis, a community of more than 55,000 situated in the Willamette Valley between Portland and Eugene. Ocean beaches, lakes, rivers, forests, high desert, the rugged Cascade and Coast Ranges, and the urban amenities of the Portland metropolitan area are all within a 100-mile drive of Corvallis. Approximately 18,000 undergraduate and 3,900 graduate students are enrolled at OSU, including 3,500 U.S. students of color and over 1,100 international students.



Every effort has been made to ensure the accuracy of information in the Summer Session Planning Guide. However, Oregon State University or the State Board of Higher Education may find it necessary from time to time to make changes in courses, curricula, or degree requirements. Students already admitted to a program in which such changes have been made will be reasonably accommodated, if possible, to ensure their normal progress to a degree. A student may, however, be required to conform to changes in courses, curricula, or degree requirements as deemed necessary by Oregon State University or the State Board of Higher Education.

Oregon State University, in compliance with state and federal laws and regulations, does not discriminate on the basis of race, color, national origin, religion, sex, sexual orientation, marital status, age, or disability or veteran's status in any of its policies, procedures, or practices. This nondiscrimination policy covers admission and access to, and treatment and employment in, university programs and activities, including but not limited to academic admissions, financial aid, educational services, and employment. Inquiries regarding the university's equal opportunity policies may be directed to the Office of Affirmative Action and Equal Opportunity, 541-737-3556. This publication will be made available in accessible formats upon request. Please call 541-737-1470 for further information.

Oregon University System

Seven universities make up the Oregon University System: Eastern Oregon University, Oregon State University, Oregon Institute of Technology, Portland State University, Southern Oregon University, University of Oregon, and Western Oregon University.



Financial Aid

summer.oregonstate.edu/tuition/aid.htm

Opportunities for financial aid are limited during Summer Session. If you would like financial aid, make sure you've submitted the Free Application for Federal Student Aid (FAFSA) as soon as possible after January 1. Forms are available now in the OSU Office of Financial Aid and Scholarships or online at www.fafsa.ed.gov. Students must register for classes at least half time (6-8 credits for undergraduate and postbac students; 5 credits for graduate students) before their summer aid will be reviewed. Approved financial aid funds will be released on July 1.

Financial aid information:

541-737-2241
Office of Financial Aid and Scholarships
218 Kerr Administration Building
Web: oregonstate.edu/admin/finaid

Housing & Dining Services

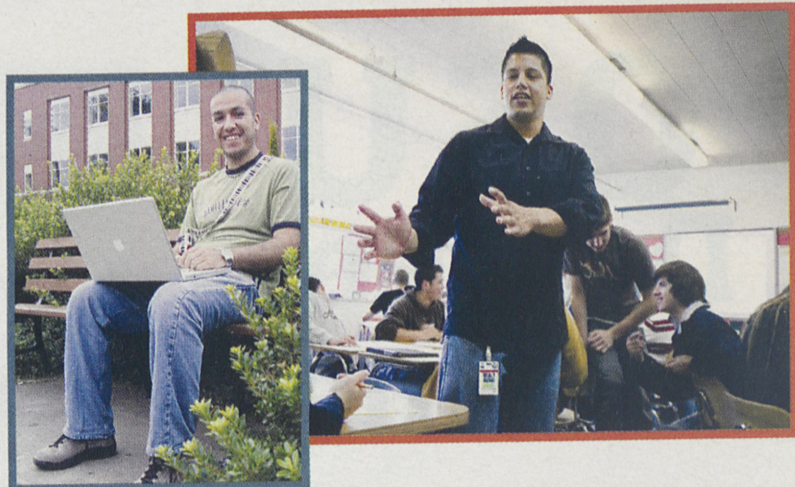
summer.oregonstate.edu/new-visiting/orient/housing.htm

Students choosing to stay on campus during the summer will live in West International Hall or Halsell Hall. Stay on campus this summer and enjoy the convenience of on-campus living, including meal service throughout Summer Session. You can live in West International or Halsell during the sessions for which you are enrolled. Sign up for summer housing starting April 1.

On-campus housing information:

541-737-4771
University Housing & Dining Services
102 Buxton Hall
Email: uhds@oregonstate.edu
Web: oregonstate.edu/uhds

There are off-campus options located near OSU and throughout Corvallis. Located steps from campus, The Gem features unique and contemporary living spaces within furnished studios and a limited number of one, two and three bedroom apartments. For more information about off-campus rental opportunities, check the Memorial Union housing board or visit the following websites: www.thegem.org, rent.com, gazettetimes.com, corvallis.craigslist.org.



Summer Quick Links

- Classes at the Coast Marine & Environmental Studies**
 Explore the beauty of the Oregon Coast while taking OSU classes at Hatfield Marine Science Center in Newport.
summer.oregonstate.edu/courses/hatfield
- Professional Interest Courses**
 Enhance your professional skills and credentials.
summer.oregonstate.edu/courses/professional
- Study Tours and Field Courses**
 Grab the opportunity to study at locations around the state, the nation, and the world!
summer.oregonstate.edu/courses/tours
- About OSU**
 Experience something new and different this summer!
summer.oregonstate.edu/new-visiting/about
- Things to Do**
 Enjoy summer films and other campus activities.
summer.oregonstate.edu/todo
- Campus Map**
oregonstate.edu/campusmap
- Youth Programs**
summer.oregonstate.edu/courses/youth
- Student Resources & Services**
summer.oregonstate.edu/new-visiting/orient
- Quick Links – Online**
 An online resource for commonly needed information.
summer.oregonstate.edu/advisors

Summer Calendar

Web Registration Begins	Sunday, April 11
Certification of Enrollment Begins	Tuesday, June 22
1-Week Intersession (Session 6)	June 14-June 18
11-Week Session (Session 1)	June 21-September 3
First 4-Week Session (Session 2)	June 21-July 16
8-Week Session (Session 3)	June 21-August 13
Independence Day Observed (Holiday)	Monday, July 5
Second 4-Week Session (Session 4)	July 19-August 13
3-Week Session (Session 5)	August 16-September 3
Labor Day (Holiday)	Monday, September 6

Summer Session 2010 Chart of Session Dates

Jun 14	Jun 21	Jul 19	Aug 16	Sep 3
SES. 6 1 week (Jun 14 - Jun 18)				
SESSION 1 11 weeks (Jun 21 - Sep 3)				
SESSION 2 4 weeks (Jun 21 - Jul 16)				
SESSION 3 8 weeks (Jun 21 - Aug 13)				
SESSION 4 4 weeks (Jul 19 - Aug 13)				
SESSION 5 3 weeks (Aug 16 - Sep 3)				

Independence Day
Jul 5



OSU Extended Campus—Online Classes

OSU Degrees Online



Going home for the summer? Traveling?

Fits into your life

If your plans don't include Corvallis, you can still jump ahead by taking classes online through OSU Extended Campus (Ecampus). Choose from over 150 online classes this summer in more than 50 subjects, including:

- **Online Chemistry Sequences**
(General Chemistry with online lab and Organic Chemistry)
- **Online Foreign Language Sequences**
(French, German, Spanish and Russian)
- **Online Bacc Core Classes**
(More than 100, including nine Writing Intensive Classes)

OSU Ecampus offers eight online undergraduate degrees, 14 online minors, and a variety of distance graduate degrees and certificates in education and natural resources-related subjects. Visit our website to explore all of our offerings!



Oregon State | Extended Campus
UNIVERSITY

ecampus.oregonstate.edu

541.737.9204 • 800.667.1465
ecampus@oregonstate.edu

Connect with Summer Session

Find out about contests, special promotions and giveaways exclusively for our Facebook and Twitter friends, including:

- Best of Summer Session 2010 contest
- Weekly coupons for local businesses
- Flat Benny 2.0



Find us on
Facebook



Follow us on
twitter

summer.oregonstate.edu/connect

Facebook is a registered trademark of Facebook, Inc.
Twitter is a registered trademark of Twitter, Inc.



OSU Hatfield Marine Science Center

Take Classes on the Coast!

Classes start June 21, 2010.

Pay OSU in-state tuition! Scholarships available!

For freshmen to graduate students, science and non-science majors, and professionals.

100/300-Level

- Introduction to Marine Biology - BI 150 (Four weeks online, one weekend in Newport)
- Biology and Conservation of Marine Mammals - BI 302/FW 302 (Four weeks on-site in Newport)

400/500-Level

- Aquatic Biological Invasions - BI 421 & FW 421/521 (Four weeks online, one weekend in Newport)
- Ecology of Marine and Estuarine Birds - FW 499 (Four weeks on-site in Newport)

Plus...

- Directed Independent Study
- Internships, Workshops and More!

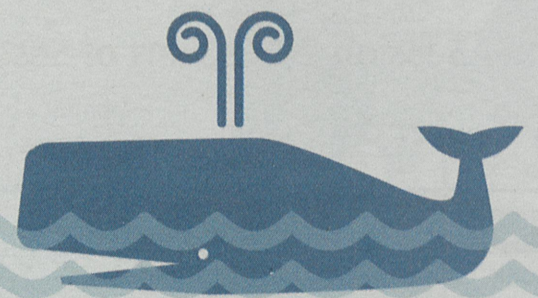
See the HMSC website for a complete list of summer 2010 courses, detailed course descriptions, and information on housing, scholarships, costs and HMSC faculty & staff.

For more information, visit:

summer.oregonstate.edu/courses/hatfield

MARINE & ENVIRONMENTAL STUDIES PROGRAM

in Newport, Oregon



Please recycle this Planning Guide.
Pass it on to a friend.



summer.oregonstate.edu

OSU Summer Session

Oregon State University
4943 The Valley Library
Corvallis, OR 97331-4504
541.737.1470 or 800.375.9359
summer.session@oregonstate.edu