

# CANNIBAL ISLE.

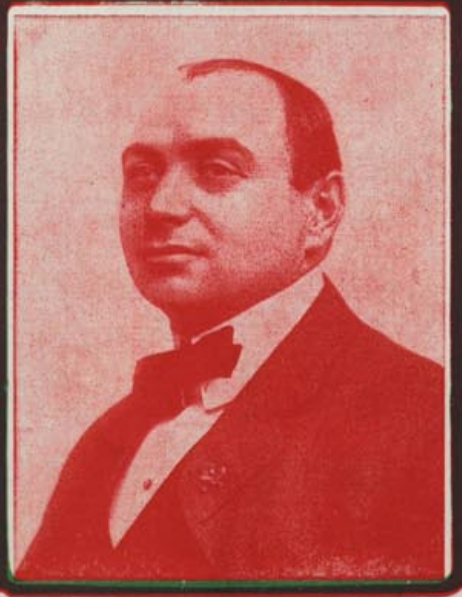


6026  
7433

OOGIE  
OOGIE

WOOGIE  
WOOGIE

SONG BY OLIVE L. FIELDS  
AND  
HARRY L. NEWMAN



THIS IS  
**JAKE STERNAD**  
Who has 32 Acts Singing this Song

SUNLIGHT MUSIC CO.  
GRAND OPERA HOUSE  
CHICAGO ILL.



006026

5

# TRY THESE OVER ON YOUR PIANO.

REGULAR COPIES ON SALE EVERYWHERE.

## One Pair of Eyes.

REFRAIN. Tenderly and dreamily.

lyrics: You so fair, eyes so rare, eyes you can't see quite. One pair of eyes, I re- al- ize. How I want you, and you. For I love one pair of eyes.

Copyright, 1934, by Harry L. Newman, Inc.

## I'd Like Someone to Love Me.

CHORUS. Expressive.

lyrics: I'd like someone to love me. Some- one fond and true; I'd like a lit- tle lov- ing. So I never would feel blue. I'd like a co- zy cor- ner, just big enough for two. For I'd like some- one to love me. And it might as well be you. I'd like you.

I'd Like Someone to Love Me. 1-2.

## CANNIBAL ISLE.

Song by OLIVE L. FRIEDLS.  
HARRY L. NEWMAN.

CHORUS.

lyrics: Way down on the Can- ni- bal Isle, where the sweet- est breeze be- gins, in the junc- ture where bam- boos grow, they're hap- py in their bus- in- ess. Oh, oh, oh! When the stars shine down from a love, on his dear- ly love. She's his on- ly, on- ly and he's her woo- ing. Down on the Can- ni- bal Isle.

Copyright, 1934, by Harry L. Newman, Inc.

## THE AMERICAN RAG.

PATRIOTIC MARCH RAG.

Arrange by HARRY C. THOMPSON

By HARRY L. NEWMAN.  
ROY MARTON

Piano.

Copyright, 1934, by Harry L. Newman, Inc. All rights reserved. International Copyright secured. Rights for mechanical instruments reserved.

BE SURE AND PLAY THE CHORUS OF EACH ONE OF THESE SONGS AND WE ARE POSITIVE THAT YOU WILL BE PLEASED WITH THEM. ALL ARE NEW.

# CANNIBAL ISLE.

Song by **OLIVE L. FIELDS.**  
**HARRY L. NEWMAN.**

*Allegro Moderato.*

The piano introduction is in 2/4 time with a key signature of one sharp (F#). It begins with a mezzo-forte (*mf*) dynamic. The right hand features a melodic line with eighth and sixteenth notes, while the left hand provides a steady bass line. The piece concludes with a forte (*fz*) dynamic and an accent (^) over the final chord.

1. On..... the Can-ni-bal Isle..... the sun does  
2. 'Neath..... the jun-gle moon..... this big bab-

**TILL READY.**

The piano accompaniment for the first vocal line continues in 2/4 time. It features a rhythmic pattern of eighth notes in the bass and chords in the treble. The dynamics are consistent with the previous section.

smile..... 'most all the while; Lives..... a lit-tle maid,..... 'neath bamboo  
boon..... would sit and spoon, With..... his dus-ky bride..... close by his

The piano accompaniment for the second vocal line continues in 2/4 time. It features a rhythmic pattern of eighth notes in the bass and chords in the treble. The dynamics are consistent with the previous section.

shade,..... 'mong ev - er - glade; ..... Lov - ers plen - ty, she had twen - ty,  
side,..... their love con - fide;..... Hug - ging, kiss - ing, nev - er miss - ing.

but no one would do; Then came wooing, came a coo - ing tales of love so true,  
all the whole day through, They are hap - py, nev - er scrap - py, un - der the bam - boo;

Great big loon, how they'd spoon, there'll be a hon - ey - moon....  
That's the style, all the while, down on the Can - ni - bal Isle .....

**CHORUS.**

'Way..... down on the Can - ni - bal Isle, where..... the sweet - est breezes be -

guile, In jun - gle row, where bam-boos grow, they're hap-py in their bun - ga -

This system features a vocal line in treble clef and a piano accompaniment in bass clef. The key signature has two sharps (F# and C#). The lyrics are: "guile, In jun - gle row, where bam-boos grow, they're hap-py in their bun - ga -".

low, Oh, oh, oh! When..... the stars shine down from a - bove,

This system continues the vocal line and piano accompaniment. It includes a *rit.* (ritardando) marking above the vocal line. The lyrics are: "low, Oh, oh, oh! When..... the stars shine down from a - bove,".

on..... his dusk-y love,..... She's his oo-gie, oo-gie, and he's her woo-gie.

This system continues the vocal line and piano accompaniment. The lyrics are: "on..... his dusk-y love,..... She's his oo-gie, oo-gie, and he's her woo-gie.".

woogie, Down on the Can-ni-bal Isle..... Isle.....

This system concludes the vocal line and piano accompaniment. It includes first and second endings marked with "1" and "2". The lyrics are: "woogie, Down on the Can-ni-bal Isle..... Isle.....".

# TRY THIS OVER ON YOUR PIANO

REGULAR COPIES OF ANY OF THESE SONGHITS ON SALE EVERYWHERE

## When I Get that Loving Feeling

**CHORUS.** *Allegro*

When I get that lov-ing a feel-ing, I real-ly don't know what to  
do-do-do-do. Right a-round my heart there comes a stea-dy e-ing. And the  
feel-ing, dear, is just for you-oo-oo-oo. All I want from you is a  
love-or-ing. Love me hon-ey, love me true; For when I get that lov-ing  
feel-ing, Oh, lovey mine, it's all for you... you...

*When I Get That Loving Feeling. 1-4.*

## In Dear Old TENNESSEE.

**CHORUS.** *(With expression - Drop)* Words by OLIVE L. FRIELDS. Music by HARRY L. NEWMAN.

In dear old Ten-nes-see. That's where I long to be. Where skies are  
as blue as the eye. And hearts are as true. Where per-fumed  
breas-es blow. And sweet mag-nolias grow. That's where I  
long to be. How ev-er. In Ten-nes-see. In dear old see-see.

*In Dear Old Tennessee. 1-2.*

## Bye, Bye, Kid.

**CHORUS.**

Bye, bye, Kid. I real-ly hate to leave you. Bye, bye, Kid. It  
breaks my heart to give you. But I'll come back to you, dear  
soon. No more to part from you, soon-er-than.  
Kid. Now say you're by my side. Bye, bye, Kid. I know your heart is  
right in. You are my pal, my pal, and my own true pal, so  
Bye, bye, Kid. Bye, bye, Kid.

## HONEY, WON'T YOU LET ME BE YOUR TURTLE-DOVE?

**CHORUS.** *Slow Drop*

Hon-ey, won't you let me be your—your tur-tle-dove? I'll be just as faith-ful as the  
stars a-bove. Say that you love me, hon-ey, please do. We'll be so hap-py  
just me and you. Hon-ey, get, with me you make an—an aw-ful hit,  
Hon-ey, won't you love me just a lit-tle, lit-tle? Feed you on kin-der-ness,  
show you what love is—If you'll let me be your tur-tle-dove.

PUBLISHED BY

**SUNLIGHT MUSIC CO., "THE LARGEST MUSIC PUBLISHERS IN THE WEST"**

HARRY L. NEWMAN, Mgr.

GRAND OPERA HOUSE, CHICAGO, ILL.