



OREGON STATE Daily Barometer



VOL. LXXIV, No. 93

OREGON STATE UNIVERSITY, CORVALLIS, OREGON

Thursday, May 1, 1969



STEVE Crow is the Beavers fourth...

EUROPE JET CHARTER FLIGHTS

BEA COUCHMAN

SHOWTIME

ALL THE FAMILY

Calendar...

NERETT ANAN

RT YOUR SHERIFF

WHITESIDE THEATRE

Speed!...Spectacle

Grand Prix

AND

Marvin, Charles Bronson

Wednesday—Grand Prix 7:00

Carnival Workers Needed

Czech Crisis To Be Discussed

Casino Royale

Law Professor To Speak

Beautiful Downtown Corvallis

Radiation And Cellular Membranes

Friends of Farmworkers

Beaver Belles Applications

Coffee House For Moms

Mom's Weekend Housing

Peace Corps Tests

University Committee Positions

Mountain Club

4-H Club

Women's Liberation

Christian Scientist Here Today

Honors Student Association

Forestry Club Council

WRHC

Jr.-Panhellenic

Sp 250 and 350 Meet Today

Three Students Elected In Final Runoff Balloting

Yesterday's voting resulted in the election of two new Senators and a Women's Residence Hall Council representative.

Education Senator is Pam Fox, a junior; Science Senator is Dave Miller, a sophomore; and Janet Bennett, a freshman in Pharmacy, is the newly elected Women's Residence Hall Council Representative.

Turnout at the polls was extremely poor, according to Dave Rubin, a senior in Forestry, who is the Senate Service and Elections Committee chairman.

The voting went as follows: Education Senator—Pam Fox won with 42 votes over Kathy Reed, a junior, with 41 votes. This tally was counted three times.

Next year's Beaver Staff has been chosen by the Publications Board.

The editor position will be filled by Ralph Thrift, junior from Coos Bay.

Thrift is majoring in political science, and transferred to OSU from Lawrence University, Appleton, Wisconsin, his sophomore year.

He hopes to make next year's Beaver include more photo essays. Arranging the book in sections of fall, winter and spring, he hopes the book will portray the story of the year consecutively.

Last year Thrift served as Copy Editor for the Beaver, and was his high school yearbook editor.

Other major staff positions appointed include: Greg Cox, business editor; Julie Lomen, managing editor; Sue Ogle, layout editor; and Sue Grantham, copy editor.

Applications for general staff positions and assistant section editors are available at the Student Activities Center. They are to be completed by May 7.

Thrift also noted that free lance photographers are also needed next year. Anyone interested should contact either Thrift, or Jim Cron at the Beaver Office.

Irwin Harris, Director of Student Activities, serves as advisor to the yearbook.

Department Head Resigns Position

Dr. McAllister H. Hull, Jr., chairman of Oregon State University's physics department for the past three years, has resigned to accept a similar position at the State University of New York at Buffalo.

Hull will head up Buffalo's 31-member faculty in the Department of Physics and Astronomy.

In announcing his resignation, Hull cited Buffalo's "strong faculty salary position, support for graduate students and state-supported research opportunities for younger faculty members."

Hull came to OSU in 1966 as head of the Department of Physics, historically one of the largest departments in OSU's School of Science. He is a member of the faculty senate and has served on the senate's executive committee.

From 1951 to 1966 Hull was a member of the Yale University physics faculty and at the time of his OSU appointment was director of graduate studies in the Yale physics department.

Nuclear Physics Research He has done extensive research in theoretical nuclear physics, principally in the area of nucleon-nucleon interactions. He has published and co-authored more than 40 scientific papers.

He holds B.S. and Ph.D. degrees in theoretical physics from Yale where he studied under Dr. Gregory Breit, internationally-known physicist. Last year, Hull was one of eight leading U.S. Physicists selected to lead a symposium honoring Breit, who is credited with getting work underway on the original atom bomb project and with spearheading development of the first proton accelerator in the United States.

Karen Heinenon by a 16-3 margin. The write-in for Linda Collins for this office was cancelled when Miss Collins declined the nomination Tuesday.

The announcement, made by chairman Dr. J. E. Oldfield of animal science, came after nine weeks of interviews and deliberation on the Milton case.

Milton was the center of last term's beard issue with the athletic department that resulted in class boycotts, athletic events boycotts against Oregon State and an eventual walkout of many of OSU's Black students.

In a meeting Tuesday night, the Human Rights commission had written up their final recommendations to be made to President Jensen. Oldfield called the statement "in substantial agreement" among the commission members.

Two members were absent from that, George Carr and Judy Britton, both students. The commission has set a Friday afternoon meeting with Jensen to discuss the recommendations and findings of the committee.

McALLISTER HULL



By JANET GODARD Managing Editor

Constructive action is the aim of the newly recognized ASOSU organization, the English Students Association (ESA).

Formed out of discussions that came up concerning policies of tenure within the English Department this year, the ESA's primary aim is that of serving as a communication organ, according to Eric Stevens, president of the group.

With a realistic approach, the ESA hopes to "make things better" instead of sitting passively around doing nothing, Stevens, a junior in English Education, noted.

In line with this approach, the ESA has submitted a proposal for student participation in English department decisions. The proposals suggest: —that students be

Report Set On Inquiry

The President's commission on Human Rights is expected to make their recommendations to President Jensen concerning the case of Fred Milton, ex-Oregon State football player, Friday afternoon.

The announcement, made by chairman Dr. J. E. Oldfield of animal science, came after nine weeks of interviews and deliberation on the Milton case.

Milton was the center of last term's beard issue with the athletic department that resulted in class boycotts, athletic events boycotts against Oregon State and an eventual walkout of many of OSU's Black students.

In a meeting Tuesday night, the Human Rights commission had written up their final recommendations to be made to President Jensen. Oldfield called the statement "in substantial agreement" among the commission members.

Two members were absent from that, George Carr and Judy Britton, both students. The commission has set a Friday afternoon meeting with Jensen to discuss the recommendations and findings of the committee.

ASOSU Senate Committee To Investigate Election

The five members of the special committee set up by the ASOSU Senate to investigate the election procedures of the primary and general elections have been announced. They are Linda Blierby, John Jacobsen, Larry Thornburgh, Judy Gaedtko, and Craig Lehmann.

The committee will conduct a thorough investigation of the recent elections and make a summary report to the ASOSU Senate at its next meeting May 6. The senate bill calling for selection of the committee empowered the members to recommend invalidation of any individual elections their study deems necessary.

Dave Rubin, chairman of the Elections Committee, reports, "Members of the investigatory committee comprise a neutral body of students representing a variety of areas in the university." They were selected on the basis of impartiality and leadership by ASOSU president Dave Zier and first vice-president Sue Fox.

Their activities include: Linda Blierby, Morfar Board vice-president; John Jacobson, IPC Judicial vice-president and member of Blue Key; Judy Gaedtko, member of the University Discipline Committee; Craig Lehmann, Student Government Committee chairman; and Larry Thornburgh, chairman of the Investigation Committee, Senior Class president and member of major and living groups are represented, and none of the members participated or actively campaigned in the elections, according to Zier. All are seniors with the exception of Gaedtko, a junior.

In meetings which began yesterday and will continue through today, the committee is reviewing all complaints. "The committee will be very fair and thorough in investigating all areas of contention," Rubin reports.

The committee's full report and recommendations will be given at the ASOSU Senate meeting May 6, two days prior to the installation of the newly-elected officers.

and responsibly as possible." The executive committee bill was approved 20-1.

An orientation course offering insight into the various areas within the University was introduced by Cindy Banzer, Panhellenic Senator. This proposal, which was passed by a 20-1 vote, provides an opportunity for freshmen to be aware of what academic concerns and professional opportunities are open to them, and will perhaps alleviate the frequent major changes during the college career.

The orientation course will be a two credit course, on an S-U basis, and will be offered under the School of Humanities and Social Sciences. It is geared to complement the Freshman Lecture Series, and is being recommended to the Council on Curriculum and Academic Policy.

Also being recommended to the Council on Curriculum and Academic Policy by Senate is the S-U Option bill, which states that a student have the option of choosing an unlimited number of S-U courses after a base load of 12 graded credit hours per term.

This recommendation is based on the premise that competitive pressures will be cut down and that a student may carry more credit hours per term.

performs original plays throughout Oregon. Regarding her role, she says she loves the chance to play a "real broad."

The final lead in "The Threepenny Opera" is Tiger Brown, the sheriff and cohort of Macheath. Buz Painter plays the role. He is a freshman speech, radio and television major from Portland.

Painter previously appeared in a production of "Endgame." He has also played with various rock groups in the Seattle area.

Cast In 'The Threepenny Opera' Relates Theater Backgrounds

By BABETTE VANELLI Staff Writer

The leads in "The Threepenny Opera" have personal backgrounds as varied as the characters they portray. Looking forward to a May 9 opening, they all agree that the play is a lot of work but more fun.

Cast in the leading role of Macheath or "Mackie the Knife," is Craig Jessup. He is a freshman in speech and drama. His hometown is Alameda, California where he was active in his high school's plays and Little Theater productions of "Oliver" and "Once Upon A Mattress."

At OSU, he had the lead in "Oh Dad, Poor Dad, Mama's Hung You In The Closet And I'm Feeling So Sad," and a part in "Dr. Faustus."

As to his characterization of Macheath, Jessup says, "It's quite a change from a whimpering mama's boy (in "Oh Dad, Poor Dad") to a rapist thief."

Junior Peggy Hope plays Polly Peachum, Macheath's bride. She is taking only drama this term and works at Globe Travel Service. A physical education major with a minor in drama, Miss Hope attended Clatsop Community College for two years.

While there, she appeared in "Spoon River Anthology" and "Time Out For Ginger." She also sang with a folk group for three years and has studied voice.

J. J. Peachum, the "Beggars' Friend," is played by John Evey. A sophomore from Corvallis, he is a humanities divisional major in music, speech and theater. "The Threepenny Opera" is his first university play.

His interest was stimulated when he took part in a reader's theater of another Brecht play.

Evey participated in a traveling play last year with the Cooperative Campus Ministry and has been in the university chorus.

Joyce Aney plays the part of Mrs. Peachum and she describes her character as "mature, coarse and hard." She attended Eastern Oregon College several years ago and now is continuing her education at OSU. She is a home economics major with plans for social work.

She has studied voice and has sung with groups and church choirs.

Cast as Jenny, the "Madame of the Brothel," is Corrine Chaves. Before her marriage, she was a professional singer and is currently active in the Corvallis Barn Theater and the Corvallis Arts Center. She is also an actress with the Tycho Brahe Players, a group which

performs original plays throughout Oregon. Regarding her role, she says she loves the chance to play a "real broad."

The final lead in "The Threepenny Opera" is Tiger Brown, the sheriff and cohort of Macheath. Buz Painter plays the role. He is a freshman speech, radio and television major from Portland.

Painter previously appeared in a production of "Endgame." He has also played with various rock groups in the Seattle area.

performs original plays throughout Oregon. Regarding her role, she says she loves the chance to play a "real broad."

The final lead in "The Threepenny Opera" is Tiger Brown, the sheriff and cohort of Macheath. Buz Painter plays the role. He is a freshman speech, radio and television major from Portland.

Painter previously appeared in a production of "Endgame." He has also played with various rock groups in the Seattle area.

performs original plays throughout Oregon. Regarding her role, she says she loves the chance to play a "real broad."

The final lead in "The Threepenny Opera" is Tiger Brown, the sheriff and cohort of Macheath. Buz Painter plays the role. He is a freshman speech, radio and television major from Portland.

Fairbanks Art Display To Feature Sculpture Professor's Statuary

An exhibition of Professor Wayne Tayson's sculpture will begin today in Fairbanks Hall.

The exhibition will consist of statuary and base-relief displays. Featured will be work done by Professor Tayson while on sabbatical in Hawaii.

Wayne Tayson's work has been exhibited throughout the West coast states, Hawaii and Michigan.

Tayson has been commissioned to work for several public projects. He formerly worked for the Crysler Corporation as a moldier and designer. Professor Tayson earned his MA at Columbia University, New York. His post-graduate work was done at Beaux Arts, Paris, France and Cranbrook Academy of Art, Michigan.

Tayson has been teaching at Oregon State University since 1953 and is now professor of sculpture.

Stores Charged PORTLAND (AP) — The United States filed a complaint Tuesday in U.S. District Court against four Corvallis corporations. The complaint said since 1966 four variety store operators had not paid the minimum wage or time and-a-half for overtime required by the Fair Labor Standards Act.



PROFESSOR WAYNE TAYSON'S sculpture will be featured at an art exhibition in Fairbanks Hall this week. He has recently returned from sabbatical in Hawaii. Photo By STEVE PETERSON

Material Distribution Claimed In Violation

An Oregon State University assistant professor charged a student group with violation of Memorial Union policies in the distribution of informational material by OSU campus groups.

The "young lady" Klein referred to had a poster behind her representing the North American Anti-Imperialist Youth, based in Canada. He said he had ascertained "she was not an American citizen" and "she was not a student at OSU."

Sanderson said the incident was a violation of MU policy, which states, "only students or members of the university community affiliated with sponsoring recognized student organizations or university departments are entitled to use official distribution areas."

The Student Activity Committee will probably consider the statement at its meeting May 13, according to Sanderson.

of an authorized OSU student group is contrary to the guidelines set up by students and faculty for the distribution of informational material by OSU campus groups.

The "young lady" Klein referred to had a poster behind her representing the North American Anti-Imperialist Youth, based in Canada. He said he had ascertained "she was not an American citizen" and "she was not a student at OSU."

Sanderson said the incident was a violation of MU policy, which states, "only students or members of the university community affiliated with sponsoring recognized student organizations or university departments are entitled to use official distribution areas."

The Student Activity Committee will probably consider the statement at its meeting May 13, according to Sanderson.

Viewing these Pastime

For a week blossoms with pink and white paper blossoms. Weather regular condition of dived across, with of a royal on a "ing." Here we can walk off spring fever and watch nicing crowds. Thousands of families groups of friends celebrating spring's beginning with picnic, pressed rice balls, Japanese sake or rice wine. Flower-viewing provides excellent excuse to spend afternoon relaxing in pink-white clouds of blossoms.

Other thousands walk paths among the trees in amusement park rides children, stop to pray at Buddhist temple.

A festive atmosphere the park. Small shops each path, selling everything from soft drinks and hot dogs to boiled squid on a stick, whirling plastic pinwheels and Oriental demon masks.

But as night works through the cherry blossoms, crowds begin to thin. Crowds of people and cherry blossoms temporarily cured my spring fever; until another comes along, sayonara to Japan.

Marys Peak Marathon To Be Held May 24

The Marys Peak Marathon will be held again this year on May 24, between participating living groups. The race, which was held five years ago by the Acacia Fraternity, set up as a challenge by Acacia and Chi Omega to any group consisting of an equal number of members from men's and women's living groups.

Tokyo's large city is famous for cherry blossoms. Here we can walk off spring fever and watch nicing crowds. Thousands of families groups of friends celebrating spring's beginning with picnic, pressed rice balls, Japanese sake or rice wine. Flower-viewing provides excellent excuse to spend afternoon relaxing in pink-white clouds of blossoms.

Other thousands walk paths among the trees in amusement park rides children, stop to pray at Buddhist temple.

A festive atmosphere the park. Small shops each path, selling everything from soft drinks and hot dogs to boiled squid on a stick, whirling plastic pinwheels and Oriental demon masks.

But as night works through the cherry blossoms, crowds begin to thin. Crowds of people and cherry blossoms temporarily cured my spring fever; until another comes along, sayonara to Japan.

Orientation Scheduled

Women interested in becoming housemothers or head residents in university or college living groups — sororities, fraternities, cooperatives or residence halls — are encouraged to attend a special workshop at Oregon State University June 22 to 29.

Dr. Jo Anne Johnson, OSU dean of women and workshop director, heads the orientation and training program. Assisting her as coordinator will be Dr. Robert D. Dyer, assistant director of the counseling center. Other members of the university staff also will participate in the workshop.

"The average for the first-year teacher with a bachelor's degree will be about \$6,500 for the academic year," Mrs. Smith noted. This is approximately \$300 above the 1968-69 average for beginning salaries.

Those with master's degrees generally receive an additional \$200 to \$300 for first-year teaching, she explained.

The OSU teacher placement director indicated that some 500 school district personnel and college officials visit the placement bureau each year.

Education Grads' Pay Raise Due

Starting salaries for Oregon public school teachers are now in the \$6,200-\$7,000 range — according to Kathryn Smith, Oregon State University director of teacher placement.

"The average for the first-year teacher with a bachelor's degree will be about \$6,500 for the academic year," Mrs. Smith noted. This is approximately \$300 above the 1968-69 average for beginning salaries.

Those with master's degrees generally receive an additional \$200 to \$300 for first-year teaching, she explained.

The OSU teacher placement director indicated that some 500 school district personnel and college officials visit the placement bureau each year.

Income Tax Info Given

Ten weeks from the date a Federal income tax return calling for a refund is mailed, the taxpayer either has his check or a letter explaining why it is held up, A. G. Erickson, District Director of Internal Revenue for Oregon, said.

For this reason, a taxpayer who has not heard about his refund should wait ten weeks before writing IRS. By waiting this length of time, most taxpayers will find their inquiry unnecessary, Erickson said.

If it becomes necessary to write, the taxpayer should indicate where and when he filed his return and give his name, address and social security number.

Millions of tax returns are handled every filing season at the Western Service Center which serves Oregon taxpayers. The volume of processing operations there makes it practically impossible for IRS to locate a particular return and to answer any question about it until processing is complete.

Marine Center To Feature First Showing Of Hatchery

Oregon State University's new experimental oyster hatchery will be shown to the public for the first time Saturday and Sunday, May 3-4, when OSU's Marine Science Center in Newport conducts its annual open house. Doors are open from 10 a.m. to 4 p.m. both days.

Besides the hatchery, the center's museum-aquarium will be open along with the scientific research and teaching wings of the building. They include the Pacific Fisheries Laboratory and the Yaquina Marine Biology Laboratory.

Oregon State's two largest research vessels will be ready for visitors who will be invited to follow self-guided tours through the floating laboratories. Students will be on hand to answer questions aboard both vessels, Yaquina and Cayuse.

Yaquina, OSU's 180-foot flagship, returned April 26 from her longest voyage yet, a 15,000-mile trip to the Galapagos Islands near South America. The cruise lasted nearly four months.

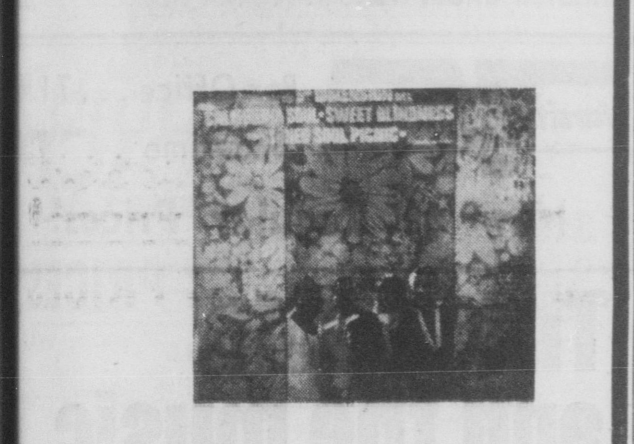
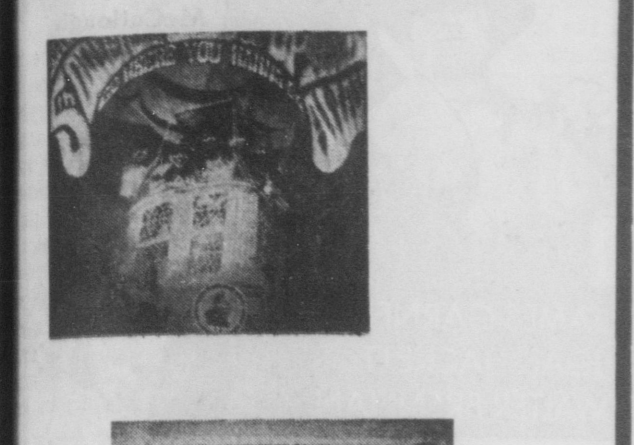
Cayuse is an 80-foot ship. Commissioned just a year ago, she is the newest in the OSU "navy."

Expected to draw considerable interest at this year's open house is the experimental oyster hatchery OSU scientists have started with the cooperation of the state's oystermen. The hatchery, in the center's west wing, is the product of years of research carried on by fisheries Professor Willie Bresse and others.

Bresse sought ways to produce oyster "seed" in hatcheries so domestic oystermen would no longer have to rely on an expensive and frequently scarce Japanese source. Under carefully controlled conditions in the three-sectioned hatchery, tiny oysters are fed algae and cared for until they are ready to take their places in commercial oyster beds.

Highlighting the oceanographic displays which will be aboard the ships and on the dock will be a new electronic multiple plankton sampler designed and constructed by Oregon State University scientists.

The 5th Dimension



Book, Reg. \$4.98
Reg. OSU Bookstore Price \$3.69
SALE PRICE \$2.97
M.U. Bldg.
O.S.U. Bookstores Inc.

SENIORS
TODAY IS
IS THE LAST DAY
FOR ORDERING
CAPS and GOWNS
O.S.U. Bookstores, Inc.
LOWER LEVEL
MEMORIAL UNION

Hise Studio
SPECIAL
Offer Good Only Until Friday
May 23
12 WALLET PHOTOS \$4.00 ONLY
• YOU SAVE \$3.50
• Pictures taken only from Beaver sittings on file
• One dollar deposit at time of order
• Good for job applications, gifts, etc.
Hise Studio 445 S.W. Madison 753-5311

VISTA
IS HERE
Room 212 Social Science Hall

EUROPE ANNUAL JET CHARTER FLIGHTS

May 25—June 16	Portland-London	\$343.00
June 7—August 6	Portland-London	\$269.00
June 13—August 7	Portland-London	\$300.00
June 15—September 21	Portland-London-Amsterdam-Portland	\$275.00
July 9—August 6	Portland-London	\$343.00
July 10—July 31	Portland-London	\$343.00
July 28—September 15	Portland-London-Amsterdam-Portland	\$310.00
August 15—Sept. 5	Portland-London	\$343.00
August 23—Sept. 22	Portland-London-Amsterdam-Portland	\$310.00
September 21	Portland-London—1 way	\$175.00

Contact:
BEA COUCHMAN
2443 1/2 Willamette St. Eugene, Ore. 97405
Phone 344-2196

CONTINENTAL AIRLINES
HOLDING INTERVIEWS FOR
HOSTESSES
To Serve Aboard Our Gold Jets
Travel the Western United States, the Far East and South Pacific.
Earn up to \$500 per month to start and enjoy liberal travel benefits for self and family. Age: 20 years (19 1/2 may apply). Height: 5'3" minimum, single, trim figure. Vision 20/30 uncorrected. Contact lenses accepted if uncorrected vision is at least 20/100 each eye.
Apply to: Continental Airlines
City Ticket Office,
539 S.W. Broadway,
Portland, Oregon
FRIDAY — MAY 2 AT 7 P.M.
SATURDAY—MAY 3 AT 9 A.M. TO 2 P.M.
Equal Opportunity Employer

Health Book Is Published

A new book, "Community Health," by Dr. Carl L. Anderson, head of the Department of Hygiene and Environmental Sanitation at Oregon State University, has just been published.

The 370-page book is organized into five sections — Overview of Public Health, Promoting Community Health, Preventing Disorders and Disabilities, Environmental Health, and Health Services. Accompanying the book is a teacher's guide and test manual organized by Dr. Anderson.

"Community Health" emphasizes recent changes in public health concepts, expands on therapy and rehabilitation aspects of health, discusses disease prevention, and includes areas on mental health, drugs, and alcoholism. It is specifically designed for use in college health programs and in schools of public health.

Cut Flowers
You don't pay for delivery at the Posy Picker— 'cause we don't deliver 1 1/2 miles East of Corvallis 752-2259

OPPORTUNITIES FOR ENGINEERS
Aeronautical, Electrical, Electronic, Industrial and Mechanical
Vacancies in the above positions are currently existent at a large industrial complex involved in design, development, and maintenance engineering related to operation, modification and repair of high performance aircraft, other systems and the production facilities involved.
Interview appointments may be made by calling The Placement Center, 754-2883.

WHAT ABOUT YOUR FUTURE?
You're about to graduate. You're a good man in your field. And now you must make a decision that could affect your entire future.
By now you've had a chance to talk with a number of different firms, mostly larger companies, with positions to be filled throughout the country. But what about all those others which don't recruit on campus?
This is where we can help you with your future. As professionals it is our business to match the qualifications, personal likes and ambitions of men such as you with the specific duties and potential offered by our client companies... companies among the most progressive to be found anywhere.
And because they are progressive, these companies pay us a fee to find them the best men for their needs. You benefit—and so do they—through the matching of talents with duties.
Let us help you with your future. It could be the last job decision you'll ever need to make.
Management Recruiters of Portland
"The Matchmakers"
818 Executive Bldg., Portland, 224-8870

MAY DAY RESISTANCE
A day of life...
A day of joy...
A day of declaration of independence...
JOIN US IN A DRAFT CARD TURN-IN AT
The Downtown park at noon on May 1st.
Corvallis Resistance
223 S.W. 8th #1
752-2175

No more housework for me! I'm a student, not a housemaid!
Live at THE COLLEGE INN, where we do everything for the student except study. Where lavish helpings of the finest food on campus are yours, with unlimited "seconds"! Where we'll dust and clean, and change the linen for you. Where you'll find laundry facilities right on the premises. (Dry cleaning pickup and delivery too!) Where you can enjoy as much or as little of the social whirl as you want... when you want it. Where you'll luxuriate in your own private or semi-private bath instead of the "Gang Bath" bustle of a dorm or the traumatic "ring around the tub" experience of an apartment. And where it would be absolutely extravagant of you not to investigate the new low, low rates. But why not see for yourself?
New budget installment plans.
This year, you can live at THE COLLEGE INN for as little as \$310.00 per term. Call, or stop by and see me. I'll be happy to show you around and give you the facts about a variety of College Inn plans now available at new low rates.
Larry Larsen, Resident Manager
CO-ED • CONGENIAL • CLOSE TO CAMPUS
The College Inn
Unsurpassed for college living.
155 Kings Rd.
Corvallis, Oregon 97330
752-7127

Attention: SENIORS
"LAST CALL"
Graduation announcements are now available at the Bookstore. Also, a complete line of personal cards and Thank You notes. Personal card letterstyle selection sheets are available from the sales clerks downstairs.

PAPERBACK SALE!!
-- 50% OFF --
ALL USED PAPERBACKS
April 28th thru May 9th
at
VARSITY BOOK EXCHANGE
2541 Monroe 752-5263

WEEKS ONLY! STARTS May 7, 1969

and PEACE
STUDENT PRICES
Special interest for students WAR being made available to them at Prices Monday through Thursday

BOX THEATRE
Broadway, Portland 226-6845

ADVERTISING

10. Personal Notices
page end. Roses, chrysanthemums, dutch iris, tulips, lilacs, gladioli, etc. — Corvallis, 753-2259. Order early — don't be disappointed.

12. Miscellaneous
Buy and sell U.S. COINS for \$1.75 for silver dollars. Call Tad Dale, 753-4453.
Engagement ring for sale. Will sell at a loss. Call 752-4453.
FREE: 2 kittens 7 weeks old, boy-trained, females. Call 752-0021, evenings.
13 Automotive Repairs
Brake overhaul including lining, arcing, rebuilt cylinders, turning drums, new gear springs, 30,000 mile guarantee this month only \$89.95. FIRESTONE, 3rd and Adams, 752-7176.

ACTUALLY, EVEN I HAVE A HARD TIME TELLING THEM APART...
Brant parker and Johnny bart
I'll TAKE IT!

Look Out Beavers!

Ducks Seek Upset

By BOB CLARK Sports Editor
The University of Oregon track team, led by a talented stable of distance runners, invades Corvallis Saturday in

hopes of ending a somewhat dismal dual meet season on a high note with an upset of Oregon States highly rated cinder team.

And the Ducks could just have the horses to pull off the upset.

Led by their distance runners, the Ducks have lost only two dual meets this year, to USC and Washington State.

For Oregon and coach Bill Bowerman, those two losses were more than they absorb in most seasons. A third loss this week, especially to arch rival OSU, would end a poor season in the eyes of the Ducks.

Their biggest hopes for wins against OSU figure to be in the distance races and hurdles.

A pair of returning all-Americans, Roscoe Divine and Arne Kvalheim lead the Ducks in the long races. Divine, who was forced to

sit out last season with an injury, has already run a 4:04.5 mile this year. Two years ago Divine ran a 3:57.2, the second fastest time ever in the mile for an Oregon trackster.

BOB'S 19¢ HAMBURGERS

COUNTRY KITCHEN'S Thunderbird Lounge
Dinner at the Thunderbird Lounge starts the evening just right... It costs less than you think — Steaks from \$2.50.

It's almost Too Late...
The end of your college career marks the real beginning of your life. And there is no better symbol of the future than a college ring — your silent diploma.

OSU BOOK STORE
M.U. BLDG.
Order NOW to insure graduation delivery of your personalized college ring. Choice of weights, stones and styles... CREATED BY JOHN ROBERTS

OSU BOOK STORE
M.U. BLDG.
Now Available.
OSU BOOK STORE
M.U. BLDG.

A HEAR-IN
FEATURING QUALITY STEREO SOUND
WE WANT TO DEMONSTRATE!
against hiss, roar, rumble, drop out, and other hang-ups of other stereo systems.
WHATEVER YOUR BAG IN MUSIC, TURN ON TO IT ON THE BEST EQUIPMENT AVAILABLE, AT:
Good Hall & DAY & CAMP TV
1557 Monroe 752-5601 9th and Becca 752-5553
"WHERE HI-FI IS MORE THAN JUST A BUSINESS"

Clark's Clips

By BOB CLARK Sports Editor

Getting away from the usual spring sports for a minute: Dee Andros may not want to admit it yet, but next fall's grid team could be a lot tougher than a lot of people and maybe other teams expect.

The Beavers may have some troubles offensively, but they're defense could be the best on the West Coast.

They'll Be Tough To Score On

Touchdowns will be hard to come by against the Staters, with size, speed and all important depth on the defensive corps in quantity.

Nobody is likely to run on the Beavers up the middle, with veterans holding down all four interior positions.

Two of the four, Jess Lewis and Bill Nelson could be contenders for all-American berths.

Lewis, the NCAA heavyweight wrestling champion was a standout performer for OSU two years ago at tackle but had to forego action last season to represent Uncle Sam in the Olympics as a grappler.

Nelson, the "Quiet Giant" of the defense could come into his own this season as a defensive guard. With size to spare at 6-7, 260 Nelson could prove to much to handle for a lot of blockers next fall.

Brooks Praises

Defensive line coach Rich Brooks said earlier in the spring drills, "Nelson's off to his best start ever since he came here."

Overshadowed somewhat by his partner at guard Jon Sandstrom last fall, Nelson could be out to prove his right to some of the honors accorded Sandstrom in his final season in orange and black.

Figure on the rest of the defense being just about as tough, with returnees in depth at most positions, especially in the defensive backfield.

Offensively, the Beavers, are a little green.

The "Main" Part Is Back

Three fourths of last fall's backfield graduated and the only returnee, Billy Main has switched positions.

Main, last season's starting wingback, has gone to fullback where he'll supply speed like the Beavers have never seen at that spot.

Billy could be a marked man though. No less an authority than Arizona State coach Frank Kush calls Main "... one of the best offensive threats we'll face in 1969."

The reason for Kush's statement?

"In two games against Arizona State, Billy Main has yet to be stopped for minus yardage by the Sun Devils," commented the ASU mentor. "His play is a major factor why two of our four losses over the past two seasons have been to OSU. He hurt us more than "Earthquake" Enyart on each occasion, and his 45-yard TD run through the Portland mud last season was the longest against our rushing defense (ranked No. 1 in the NCAA) in 1968."

The big questions on offense are still quarterbacking and the interior line.

Who's Gonna Replace Preece?

The OSU grid staff has the unenviable job of picking a replacement for departed Steve Preece. Right now they're giving a shot at the position to six aspirants in hopes of finding the one man to lead the Beaver attack.

In the line, graduation took six of the seven starters. Only tackle Kent Scott returns from last fall.

The Beaver won't be the only Pacific-8 team searching for a quarterback in spring drills.

Oregon head coach, Jerry Frei, has three quarterbacks from last fall back, and three more sophomores-to-be to choose from for his signal caller.

The Ducks, regardless of their quarterback problems are pointing to their first winning season since 1964 when Bob Berry led the Webfoots to a 7-2-1 record.

If nothing else, the schedule gives the Ducks reason for optimism.

Next fall Oregon will play six home games and five on the road for 11 total. The reason for the extra game, one over the ten game limit enforced by the NCAA?

Ducks Gotta Be Kidding

Oregon plans on playing small college Hawaii in their last game, a contest the NCAA does not count as one of the 10 legal games.

Also included in the Oregon schedule are games with always "tough" San Jose State, Air Force and Idaho.

If the Ducks do come up with a winning season next year, a big share of the credit has to go to Len Cassanova or who ever made out the schedule.

Next thing you know, Oregon will be playing high schools like Grants Pass, Klamath Falls and Medford.

Come to think of it, those three might even be tougher than some of Oregon's present opponents.



ARNE KVALHEIM Duck Distance Ace



BILL NELSON The Quiet Giant

Olds - A Tale Of 2 Sports

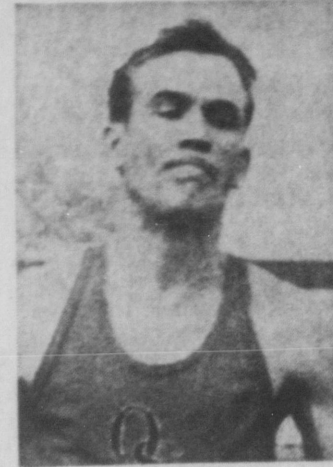
By NEIL ARMANTROUT Sports Writer

In this age of specialization, it is difficult for an athlete to achieve prominence in more than one sport. At OSU, several athletes have been able to make the switch from one sport to another.

One of the most underrated of these is Charlie Olds, a varsity performer in both football and track. A senior from Cottage Grove, Olds is a 3-year letterman as a defensive halfback in football, and the leading long jumper on the track team.

Along the way, Olds has been plagued by injuries that have slowed him in both sports. His sophomore year, Olds was injured early in the season, missing the rest of the year. The conference later voted to allow him an additional year of eligibility.

The following fall, Olds moved into the starting defensive halfback slot, a position he has held the last three years. Not an outstanding athlete, Olds was a consistent performer for the



CHARLIE OLDS Two Sports, Two Events

Beavers. In one game last fall, he tied the OSU school record for the number of interceptions in one game with three steals.

As a sophomore, Olds managed to place in the NCAA finals in the long jump. Early in his junior season, he reached 25 feet, the third best long jump in Oregon State history.

An injury slowed Olds the rest of the year, keeping him

from reaching his early season peak.

This year, he has been one of the most consistent performers for the Beavers, placing in every meet. In the meet two weeks ago against California, he reached his season's peak, hitting 24-0 in the long jump and 49-6 1/4 in the triple jump. The latter mark is the third best triple jump by an Oregon State athlete.

Teaming with Olds in the jumping events is another two-sport man, Gerry Whitaker. A sophomore, Whitaker also doubles as a football player in the fall.

An offensive guard, Whitaker is figured to be one of the top linemen for the Beavers next fall. He has three years of eligibility remaining, having red-shirted last fall.

Unlike Olds, Whitaker passes up the triple jump concentrating on the long jump. Against Washington last week, he scored the longest jump for a Beaver athlete when he hit 25-0, his best-ever.

Both Olds and Whitaker will be in action Saturday when the Beavers take Oregon in a dual meet at Bell Field.

STATE SHOWTIME 7 p.m. and 9:05 FOR ALL THE FAMILY
Calendar - a dull town, until Sheriff McCullough took over.
JAMES GARNER, JOAN HACKETT, WALTER BRENNAN
"SUPPORT YOUR LOCAL SHERIFF"
COLOR by Deluxe United Artists
Adults 1.25, Juniors .75, Children under 12 .50

TACO BELL'S "We'll give you a free tostada - for every taco you buy - sale."
For a limited time only, have a two-course fiesta for the price of a one-course fiesta! That's right, have a TACO and TOSTADA for the price of the TACO alone!
1915 N. 9th 752-0215
Open 'til 11:30 Weekdays, 'til 1:00 Weekends

WHITESIDE THEATRE
Glamour!...Speed!...Spectacle!
Grand Prix
STARRING: James Garner and Eva Marie Saint AND

The Dirty Dozen
STARRING: Lee Marvin, Charles Bronson, Ernest Borgnine, Jim Brown
Showtime Wednesday—Grand Prix 7:00

Varsity Theatre Box Office... 7 P.M. Showtime... 7:30
Now at Regular Prices!

The movie and the music for young America!
From the year's most exciting motion picture comes the year's most popular music—and #1 album—featuring "Lara's Theme."
DAVID LEAN'S FILM OF BOBIS PRODUCTIONS DOCTOR ZHIVAGO
STARRING: GERALDINE CHAPLIN, JULIE CHRISTIE, TOM COOPER, ALICIA WINSTON, SUSHAMA MENKHA, RALPH RICHARDSON, OMAR SHARIF, ANDREW RUSSELL, ROD STEIGER, RITA TUSHNETZKY

MOTHERS' WEEKEND CONCERT THE 5th DIMENSION
Gill Coliseum, Friday, May 2, 8 p.m.
Reserved Seats: \$3, \$2.50 & \$2.00; Gen. Adm.: \$1.50
Good Seats Now on Sale at The Activity Center and Coachman

OSU STUDENTS, FACULTY VACATION IN HAWAII THIS SUMMER VIA OSSHE CHARTER!
Round Trip: Portland-Honolulu \$139
Departs August 13; Returns August 27
FOR RESERVATIONS: Write to Empire Travel Service, 4835 S.W. 76th Ave., Raleigh Hills Center, Portland 97225 or phone 292-9917.
APPLICATION FORMS AVAILABLE AT STUDENT ACTIVITIES CENTER