

October 31, 1941

ay

ill

daho

on on Beaver  
ock tomorrow  
been waiting  
University of

regon State's  
ear at least,  
ave consider-

cause Idaho's

on Stiner's pro-  
s many of the  
he a chance to

o shakeup in  
Coach Stiner  
esterday. "The  
en carrying the  
ill have the re-  
tarday's game."

ntin Green-  
artin Chaves,  
Saunders, right  
sters, right end;  
left end; Lloyd  
le; Bill Halver-  
Quentin Green-  
artin Chaves,  
Saunders, right  
sters, right end;  
left end; Lloyd  
le; Bill Halver-  
Quentin Green-  
artin Chaves,  
Saunders, right  
sters, right end;  
left end; Lloyd  
le; Bill Halver-

rs and Zellick  
ss they can get  
s very quickly.  
ot start, War-  
ce Peters' place  
d Warren Per-  
for Zellick at

ents

ck's  
HIS  
ESTRA  
WSON

te Park  
ne  
Nov. 2  
to 12 P.M.

R

EL

OS

DEPARTMENT OF PUBLICATIONS  
OREGON STATE COLLEGE  
CORVALLIS, OREGON

# Oregon State Barometer

Vanquish The Vandal

Bolster The Beaver

Vol. XLIX, No. 24

Oregon State College, Corvallis, Oregon

Saturday, November 1, 1941

## Injuries Dampen Beaver Hopes for King's-X Victory

### Army Airplanes Fail to Appear In Blackout

The city of Corvallis had its blackout last night, but the 50 planes which were supposed to be the enemy did not show up. The reason was that bad weather throughout the northwest grounded all army aircraft.

The second interceptor command issued the grounding order. The planes will not take off until shortly after dawn tomorrow—if the weather clears by then.

Previously the army cancelled a 24-hour "alert" which was scheduled to begin at noon yesterday. Filter centers, however, remained busy on so-called "paper" problems involving the civilian defense of the northwest against a mythical invading airforce.

### Squealers, Horns Help Beavers In Car Rally

Despite pouring rain, Oregon Staters turned out en masse for the OSC-Idaho rally which began in front of Clark's at 5:15 o'clock last night. Honking horns... squealers of every description... tin cans... and human voices joined in the chorus of the Beaver fight song as cars wound around in front of sororities and fraternities and past other living groups.

The rally squad kept things moving and students showed by their cooperative spirit... even to defying the rain... that they are behind the team today four ways to one. Maintaining that Beaver style, Bob White, yell leader, plugged a few short yells in front of the army, climaxing a handicapped rally with a gallant finish.

### Collegiate Leaders



Delegates to the Oregon Federation of Collegiate Leaders, who are meeting on this campus today. Pictured from left to right are Ed Allworth, OSC vice president of the federation; Hal Lauer, University of Portland, president; and Andy Landforce, OSC, secretary-treasurer.

### Student Problems Eyed At OFCL Meeting Here

Picking apart student governments of different colleges in the state of Oregon, comparing them with others and putting them back together, the 1941 Oregon Federation of Collegiate Leaders convention got underway yesterday afternoon on the Oregon State campus.

Surpassing all previous attendance records, students signed the federation roll book in the Memorial Union building. Official registration started at 9 o'clock in the morning.

### Ball Programs Depict Logger In Forest Scene

#### Maestro Announces Music Will Blend With Atmosphere

A picture of Paul Bunyan and Babe, his legendary blue ox, outlined in blue against a giant blue moon and the solitude of a forest blanketed with blue snow, furnishes the cover for the foresters' ball programs, Kenneth Peck, senior in forestry and chairman of the ball, announced yesterday.

Program to be issued

Programs will be given out in the M.U. this morning from 10 to 12 o'clock and from 5 to 6 o'clock after the Idaho-OSC game this afternoon.

Wes Lang and his orchestra will furnish the music for this semi-formal dance, which starts at 8:30 o'clock. Lang said that the music will be planned to blend in with the atmosphere of ball decorations. The ballroom has been converted into a semblance of the forest primeval, with boughs of fir and pine and maple carrying out the theme.

### Weather Man Stumped—Thief Steals Barometer

A barometer has been stolen. "So what? Hundreds are printed daily." Well, not quite. This barometer is a little different. This one is used by the chemistry students in a good many laboratory experiments. It is used in making weather forecasts and for getting the barometric pressure.

The stolen barometer will be missed by some 12,000 students who have looked at it puzzlingly during its 15 years at Oregon State.

Why it was stolen is a mystery. Dr. E. C. Gilbert, professor of chemistry, ventures the guess that a student wanted a barometer to determine the weather condition for the next day and arrange his social schedule accordingly. Who knows?

### Hammers Out of Game; Injuries Dog Starters

#### Stiner Names Byington, Busch Honorary Co-captains for Fracas

Hampered by injuries but determined to regain its Pacific coast conference prestige, the Oregon State college football team will battle the University of Idaho gridiron machine at 2 o'clock this afternoon on Bell field.

On the injured list are George Peters, quarterback, who is expected to start the game, but with a bruised shoulder it is hard to say how long he will stay in the game. George Zellick, left end, will also start the game with a bruised hip, although it is also hard to say how long he will play. George Bain, left end, has an injured ankle. He will not start the game. In his place will be Lloyd Wickett, Quentin Greenough, center, will start the game with an injured knee and may not be able to play very long.

The same men who have been carrying the burden of the load for the Beavers, the men who beat Washington and Stanford, will be in the game today.

This game will have no direct bearing upon the standings in the conference, although the Beavers may be dropped into third place because of the fact that they do not play a game that counts. Oregon or UCLA can, by winning their games, take second place with three wins and two losses. Oregon, Oregon State, Washington, Southern California and UC.

(Continued on Page 3)

### Orchids Bloom In Greenhouses

One variety of orchids is now blooming in the tropical room of the Oregon State greenhouses located west of Snell hall.

Poinsettias will bloom about Christmas, and the manna, or breadfruit, and pineapple are now bearing fruit. The greenhouses are open each day from 8 to 12 o'clock and from 1 to 5 o'clock. Visitors are welcome at any time.

Near the orchids are several staghorn ferns. A banana plant with its broad leaves occupies a part of the room. Other plants in the tropical room include two varieties of rubber tree, an antheridium with brilliant red flowers, a papaya tree, a Chinese prayer plant, a bird of paradise and several foliage groups.

A large bed of cyclamens covered with pink, red and white flowers required 15 months to develop its present state from the seed and is located in a room near the office. Several varieties of "mums" are now blooming. When these are gone, later varieties will appear so that they may be seen at any time until the last of November.

### Mum Orders To Be Taken

#### Homecoming Flowers Available Today

Orders for mums for the homecoming football game Saturday, November 8, will be taken today by Home Economics club dues collectors, announced Nancy Ross, sophomore in home economics and chairman of the sale.

Mums 75 Cents Each

Mums are 75 cents each and orders will be taken until Wednesday in every women's living group.

"Every girl should have a mum for this game as it is the biggest game of the year," said Miss Ross. "Order mums for your family, friends or alumni who may be visiting at Oregon State for the homecoming game with UCLA," she continued.

### Federation Program

9:00-11:30 General Session, M.U. 105: Report of commission meetings. Election of officers. Selection of host school for next OFCL convention. Consideration of date for next OFCL convention.

12:00 Lunch in M.U. tea room.

2:00-5:00 Football—Oregon State vs. University of Idaho, Bell field.

6:15 Banquet—M.U. tea room: Guest speaker, Dr. D. V. Poling. Introduction of new officers by Hal Lauer, OFCL president.

### Faculty Too Powerful

One of the points stressed in the student-faculty relations discussion was that it is the general opinion of students that faculty have too much power in student affairs but that students do not feel the responsibility to correct the wrong.

"It is like an axe hanging overhead ready to crash down on the poor individual who dares bolster up enough nerve to challenge the administrative authority," one leader remarked. He suggested that a way of introducing new ideas safely is through a petition.

### Foundation Plans Dogpatch Party

A Sadie Hawkins' party, scheduled for November 15, is planned by the freshman students of Wesley foundation.

Co-chairmen for the occasion are Evelyn Eggman, freshman in secretarial science, and Monte Klick, freshman in engineering. Other freshman committee members are Carlton Fanger, games; Leslie Cruff, food; Franklin Fanger, clean up; Doris Jones and Betty Mann, name tags; and Glenna Walker, music.

### Women Will Revise House Rushing Rules

#### Miss McEachron To Head Committee

A committee to revise and compile sorority rushing rules was appointed by Phyllis Gray, Panhellenic president, at a Panhellenic meeting Wednesday night at the Kappa Kappa Gamma sorority house.

Marylou McEachron, chairman, will be assisted by Ione Wandstrom, senior in secretarial science, and Barbara Forest, senior in home economics.

Miss Gray announced that girls coming to the Oregon State campus for the student conference this weekend will be housed in sororities.

### Letterhead Says Beavers Bomb UCLA

"Beavers bomb UCLA!" That is the theme of the homecoming stationery designed by Ray Babb, employee of the Co-op book store. The stationery is now on sale in various living organizations and next Tuesday will be collected and placed on sale in the Co-op book store.

Representative Contacts Listed

Representatives should contact the following committee members for more stationery or for information:

Alpha Chi Omega, Delta Zeta, Gamma Phi Beta, Kappa Kappa Gamma, Kappa Alpha Theta and Pi Beta Phi call Betty Rae McDonald, 1610.

Alpha Gamma Delta, Alpha Xi Delta, Alpha Delta Pi, Delta Delta Delta, Kappa Delta, Chi Omega and Sigma Kappa call Margaret Bell, 712.

Alpha Gamma Rho, Alpha Sigma Phi, Alpha Tau Omega, Beta Kappa, Beta Theta Pi, Chi Phi, Delta Chi, Delta Sigma Phi, Delta Tau Delta, Delta Upsilon, Kappa Delta Rho, Kappa Sigma and Sigma Nu call Wally Fauseron, 368.

Lambda Chi Alpha, Phi Delta Theta, Phi Gamma Delta, Phi Kappa Tau, Phi Sigma Kappa, Pi Kappa Phi, Sigma Alpha Epsilon, Sigma Pi, Theta Chi and Theta Xi call Oscar Weed, 355.

### Dr. Muth Discovers New Sheep Disease

A new disease has just been discovered in Oregon sheep by Dr. O. H. Muth, associate professor of veterinary medicine at Oregon State college.

The disease, known as listerella or listerellosis, was found in sheep on western Oregon ranges and it is a possible cause of much of the unexplained sheep loss in this part of the state.

Infected sheep wander around in circles butting into fences and other objects, giving the name of circling disease to this infection. These peculiar symptoms are caused by a bacterium which enters the brain stem and causes an inflammation of the brain and spinal chord.

Previously this disease has been recognized in England, New Zealand and in some parts of eastern United States, but this is the first record of its appearance in the western states.

### Representatives Listed

Representatives who will take orders for mums are Doris Turner, Alpha Chi Omega; Jayne Lauffer, Alpha Delta Pi; Genevieve Murray, Alpha Gamma Delta; Marylou McAllister, Alpha Xi Delta; Bonita Wright, Chi Omega; Jeanne Clatterbos, Delta Delta Delta; Eleanor Haworth, Delta Zeta; Pat Beniteau, Gamma Phi Beta; Joan Menig, Kappa Alpha Theta; Ann Hatch, Kappa Delta; Muriel Forster, Kappa Kappa Gamma; Joanne Marble, Pi Beta Phi; Lela Anne French, Sigma Kappa; Mary Sue Howells, Edith Permut; Thelma Terry, Fairview; Betty Barnett, Hazel Rae; Ruth Jones, Jameson House; Margaret Gatchell, Katherine Veatch; Phyllis Courtwright, Linden Hall; Julia O'Keefe, Lockwood; Jean Cloake, Snell; Jean Ritchie, Waldo; Dorothy English, Pines; Ruth Blakely, town; and Doris Crow, Waldo amex.

Representatives may get receipt books and mum tickets in the AWS office at 11 o'clock today.

### Many Students Enroll In Dancing Classes

Over 100 students have enrolled in social dancing classes at the women's building, announced Miss Betty L. Thompson, instructor in physical education.

Intermediate classes meet Tuesday from 5 to 6 o'clock and the beginning classes meet Thursday at the same time.

Variations of the fox trot are taught in the intermediate classes and beginning students are taught simple basic steps and the fundamentals of leading.

These classes are not for credit but are extension classes for which a fee is paid. They are offered as an accommodation for students who have had no opportunity to learn to dance and for those who wish to learn new steps.

### Staff Displays Art Products

Members of the staff of the department of art and architecture are cooperating with National Art week, November 1 to 8, by displaying in the foyer of Kidder hall some of their art products made during vacation.

Material assembled includes design, metal craft, jewelry, pottery, photography, painting, sculpture, drawing and plans and designs for homes and gardens. This exhibit of faculty work is an annual event.

Students, faculty and towns people are welcome to see the exhibition any time during Art week, including evenings until 10 o'clock.

### Technical Record Issue Date Set

First issue of the Oregon State Technical Record, edited and published by the school of engineering, will be delivered by November 15, according to William Fillmore, editor.

The Technical Record, issued four times a year, has been published at Oregon State college for 18 years and is classified with engineering colleges' magazines.

In addition to news of technical societies and engineering honor societies, several special features appear in the first issue. These are a guest editorial by George Charles A. Sprague, an article on production of aromatics, gas and coke by the Portland Gas and Coke company, an article on the airplane industry in the northwest and a faculty page written by R. H. Dearborn, dean of engineering.

Staff members of the publication are William Fillmore, editor; Robert Lundeen, manager; Gilbert Quinby, Paul Christerson, Eugene Doll, Bill Milne, Bill Wilson, Edward Lind, Rod Bland, Ken Grant, Bob Clarke, Bob Lee and Edward Shield, assistants.

### KVK Will Open Doors Tomorrow Afternoon

Katherine Veatch Cottage will have open house tomorrow afternoon from 2 to 4 o'clock. Invitations have been sent to girls and their housemothers living in other co-ops.

KVK moved into the former Chi Phi house this summer, and it now accommodates 37 girls, an increase of 13 over last year's number. Betty Adam, senior in pharmacy, is president.

### 4-H Club Will Enter Exhibits in Congress

Nine home economics exhibits will be entered at the national club congress in Chicago, Ill., to compete with 4-H club members' entries from other states.

Canned food for an emergency meal, canned meat, canned fruits and canned vegetables are the food entries being sent to the congress.

Nothing to be sent consists of a complete costume for best wear, a cotton suit for a three-year-old boy, a wool suit and a bedroom unit of a rug and table cover.

All exhibits have been made by 4-H girls in Oregon.

### Wells Writes Article On Sea Food Problems

Harry L. Wells, '41 in agriculture, has had a full-page article on "Laboratory Solves Sea Food Problems," published in the Food Industries magazine.

The article deals with various freezing and bacteriological tests conducted by the Oregon food laboratories at Astoria. These laboratories are part of the Oregon State food industries department headed by Dr. E. W. Harvey, instructor in food industries.

Wells is now stationed at Pacific Grove, Calif., as inspector for the agricultural marketing service.

### Blase' Beavers Dance On In 'Dimout' at M.U. Mixer

For mixer goers there was no blackout last night; that is to say, the lights were merely dimmed and dancing continued as usual.

Oregon State men, however, may be suffering from eye strain today caused by their search for their favorite co-ed in the dimly-lighted Memorial Union ballroom.

All lights in the checkroom were turned out, causing a few checks to be misplaced and adding to the confusion when coat-getting time came around.

Downtown, Corvallis streets were crowded with interested students and townspeople when the whistle signals of one long and three short blasts began at 9 o'clock indicating lights out throughout the city. Corvallis police patrolled the streets carrying flashlights containing blue bulbs as are used in London during blackouts. The few moving police cars also were equipped with blue headlights.

### New Species Added To Insect Collection

Several new species have been added to the collection of Oregon aquatic insects which now number 4,800 vials of preserved specimens, according to Dr. Don C. Mote, head of entomology at Oregon State. The collection is housed in agriculture hall.

### Cheaper Flying Time Advised by Ruffner

"Flying club should offer a means to further interest in aviation by making it possible to obtain cheaper flying time for its members," B. F. Ruffner, professor of aeronautical engineering and director of civilian pilot training, told members of the Flying club at its meeting last Thursday.

Professor Ruffner gave a brief history of the club and suggested many important safety rules to follow when flying.

Over 50 percent of the accidents in civil aviation last year were due to carelessness on the part of the pilots, according to Ruffner.

Betty Rae McDonald, junior in secretarial science, was elected treasurer of the club.

### 'Quiz Kids' Stellar Attraction In Third Memorial Union Mixer

The Memorial Union's third mixer of the year was really opened with a "bang" last night when master of ceremonies, Don Field, special student in advanced flying, introduced his "quiz kids" to the dancing Oregon Staters.

Attired as the very younger generation, Issie Goldstein as portrayed by Phyllis Taw, sophomore in home economics; Little Oglethorpe by Don Moyer, freshman in engineering; and Sir Cecil Cedric Smith by Lew Krumbein, junior in secretarial science, put forth their very best foot in an attempt to answer the brain twisters shot at them by Dr. Jonathan M. Bierzick, Ph.D., M.D., B.A., B.O. and P.U.

Without even a "hitch" unless it could have been in Sir Cedric's brief shorts, the show went on amidst the illumination of the light globe attached to Little Ogle-

### Quiz Kids' Stellar Attraction In Third Memorial Union Mixer

thorpe's head. This feature attraction was during the intermission period from 10:15 to 10:30 o'clock. Doris Jones, sophomore in secretarial science, and Field wrote the script and Mic Miller, freshman in engineering, handled sound effects.

Paul Seibert's orchestra played for the no-date dance, featuring arrangements of "Chattanooga Choo Choo," "Let Me Off Uptown" and "Green Eyes." His vocalists were Betty Toye, freshman in home economics, and Bill Bentley, senior in engineering.

Motion pictures of the Oregon State-Southern California football game were shown to a capacity crowd from 9:30 to 10:15 o'clock in M.U. 105.

Air raid wardens turned out the lights during the 15-minute blackout, but dancing continued in the ballroom, regardless.

### Chemistry Men Write 150 Research Papers

Oregon State chemistry students and instructors have had 150 research papers published in scientific journals since the establishment of the school of science nine years ago.

These papers are the results of research carried on mostly in the field of pure science. Papers of quality and merit are printed in the various journals.

This is a very commendable record and speaks highly of the type of work done at Oregon State, said Dr. E. C. Gilbert, professor of chemistry.



# A Paradox in Student Government . . .

(An Editorial)

University of Oregon's liberal policies, wild politics and general reputed lack of binding regulations as compared to Oregon State merits a little digging into the systems of the two schools.

Students at Eugene can point with pride to the responsibilities that are theirs . . . to the excitement and training they get in managing their own affairs. Their student government seems at times to be completely divorced from administrative domination.

Likewise students at Oregon State can point with pride to an organization that is efficient and smooth-running . . . so smooth in fact that when rook walkouts were getting out of control, a mere word and the students themselves cancelled them . . . so smooth that suggestions from the administration seldom have to take the form of "You MUST" or "You CANT."

Students at Oregon State college have a much larger voice in student affairs than students at Oregon. The two large executive boards . . . student affairs committee and educational activities board . . . have student majorities at Oregon State and faculty majorities at the university.

The answer to the liberality at Oregon university compared to Oregon State must lie in a fear of administrative disapproval which restrains students at Oregon State from making use of the power that has been given them by the administration. The closer cooperation between students and administration at Oregon State apparently makes a more

efficient student government, but it also apparently does this at the expense of responsibility taken from students by the administration.

What often happens is that a student at a meeting cautiously ventures a new and untried idea . . . uncertain and hesitant. A faculty member present, strongly against the idea, squelches it with a powerful wave of arguments. The student, through fear of disapproval, drops the subject, but he does not forget for a long time. He makes it sound a little different when he tells his friends, thus in time helping to create a barrier between administration and students.

The student leaders bring their problems to a helpful administration who tells them how it has been done in past years. Naturally, faculty advisers have had years of experience behind them and there are few mistakes or inefficiencies in a student government run in this way.

Here is the situation . . . a liberal school with faculty majorities on the important committees and a conservative school with student majorities. At least it is something to think about.

Complaints against discipline are not confined to Oregon State college. At the conferences yesterday of the Oregon Federation of Collegiate Leaders, it appeared that the faculty often have much more power in student affairs than they do here and at some schools the college paper would have a new editor if it questioned the existing order of things.

## Oregon State Barometer

Owned and published daily except Sunday and Monday during the college year by the Associated Students of Oregon State college. Entered as second class matter under Act of May 8, 1879, at the postoffice at Corvallis, Oregon.

Regular subscription rates: \$3.00 per year or \$1.25 per term.

News room, campus—209 Memorial Union building until 6 o'clock, telephone campus 96. After 7 o'clock, Gazette-Times Publishing company, telephone 394. Business manager's office, 204 Memorial Union building, office hours 4 to 6 o'clock, telephone campus 96.

<b>JOE ROSS</b> Editor	<b>JOEL KAHN</b> Business Manager
<b>ASSISTANT MANAGER</b> Betty Brainerd	<b>WOMEN'S PAGE ADVERTISING</b> Hildegard Graves and Marjorie Hainter
<b>ADVERTISING STAFF</b> Byron DeYoung, Jack Nichols, James Morris, Dick Ross, Don Schmidt, National Advertising—Virginia Carl, Jerry Eszary, Classified Advertising—Pat Benicau, Circulation—Jeanne Sandigo, Promotions—Hildegard Schroeder	<b>EDITORIAL STAFF</b> Associate editors: Betty Anderson, Betty Graves and Marjorie Hainter, News editor—Glenn Schaeffer, Sports editor—Jack Vermuel, Co-ed editors: Ruth Brandberry and Jean Floyd, Publicity director—Genevieve Cocke, Executive secretary—Garnes Wood, Photographer—Charles Jarvis
<b>SECRETARIES</b> Jean Anderson, Margaret Boyd, Mary Jo Cox, Charlotte Capaplis, Jean Donaldson, Janet Dobbins, Ethel Gierke, Jean Gilt, Pat Glenn, Mary Lou Halverson, Jean Hopkins, Lois Melzer, Gene Nelson, Dorothy Ann Poyner, Dorothy Pysatt, Carolyn Rice, Florence Upton, Helen Urtang, Jean Warren, Dorothy Wainstrom, Pat Westworth, Pat Wallis, Mary Kaver, Jeanne Claterbos, Mary Kollins, Evelyn Schumacher, Lorena May, Jean McShallen, Betty Blair, Margaret White, Jean Tarrant, Evelyn Nielson, Margaret Jones, Eileen Strang, Jean Gilt, Gerry Anderson, Pat Clark, Virginia Selby, Eris Green, Marjorie Pike, Helen Murphy, Ann Keith, Verena Kistler, Markie Weatherford, Marilyn Millard, Phyllis Smyth, Maxine Haley, Maide Rozes.	<b>STAFF FOR THIS ISSUE</b> Night editor, Dick Blow; assistants, Gordon Nelson, Day editor, Joanne Wells; assistants, Hildegard Schoeler and Marion Jean Kierzek, General staff: Verne Hutchinson, Margaret Mary Thatcher, Jean Starker and Christine Devaney.

Staff for this issue: Night editor, Dick Blow; assistants, Gordon Nelson, Day editor, Joanne Wells; assistants, Hildegard Schoeler and Marion Jean Kierzek, General staff: Verne Hutchinson, Margaret Mary Thatcher, Jean Starker and Christine Devaney.

## Toward Democracy . . .

A more democratic campus is what Oregon State strives for in the maintenance of a special independent student office in Memorial Union 218 under the direction of Harold Nelson, president of the Independent student council. Student leaders have long sought for an office in which independent students might meet and discuss their problems.

Independent students probably have ideas of student government from a little different angle than usual. The purpose of the office is to give these students a chance to express these ideas and to assist them in getting the most out of Oregon State.

Independent leaders are asking students to come to the office with any complaints they may have. They hope that this will lessen the number of letters to the editor and similar actions which have been used in the past to portray their ideas to students.

Independent students might do well to take advantage of this opportunity to unite their group and arouse more interest in Oregon State college.

## OSC Hospitality . . .

Critical eyes will be on the campus today, as the highest student leaders from 13 other colleges and universities in the state begin a two-day session of forums and discussion groups on student government problems.

Oregon State will be host to the members of the Oregon Federation of Collegiate Leaders and the traditional democracy and friendliness of this campus should greet the visitors and make them welcome even before the reception committee performs its function.

A sincere, hospitable attitude toward the student leaders will not only make them feel "at home" here, but will give the convention delegates a lasting impression of Oregon State which they will carry back to their several representative schools.

## Weekend Social Schedule

November 1—Closing Hour 12:00	
Alpha Chi Omega, dance, house	8:30-11:30
Alpha Gamma Rho, pledge dinner, house	6:30-8:00
Alpha Gamma Rho, dance, Hotel Benton	8:30-11:30
Alpha Sigma Phi, pledge fireside, house	8:30-11:30
Chi Phi, dance, house	8:30-11:30
Forestry club, dance, Memorial Union	8:30-11:30
Lockwood hall, dance, house	8:30-11:30
Phi Delta Theta, dance, house	8:30-11:30
Phi Gamma Delta, dance, house	8:30-11:30
Pi Kappa Phi, dance, house	8:30-11:30
November 2—Closing Hour 10:00	
Beta Theta Pi, dinner, house	1:00-3:00
Delta Sigma Phi, dinner, house	1:00-3:00
Pi Kappa Phi, dinner, house	1:00-3:00
Sigma Nu, pledge dinner, house	1:00-3:00
November 3	
Standards committee, Memorial Union	12:00
Hostesses luncheon, Gerlinger hall, Eugene	12:00

## It Says Here . . .

Roosevelt may have his plans laid pretty far ahead, but for far-seeing politicians, a U of O freshman named Bill Belt takes the prize. Fifteen months ago he threw his hat in the ring for the presidential election of 1964 A.R. (After Roosevelt). In two short months he had hit the front pages of the country's leading papers and was featured in campaign poses as "The President of the Young American Party." His slogans are catchy, too. We quote: "A Cinch with Belt," and "Rely on Belt—Save Your Pants."

Well, fellows, are you going to let an Oregon man run away with this election? Where's that old school spirit?

A columnist is somebody  
Captain to Corporal: "The men in your squad must be excellent card players."  
Corporal: "Why?"  
Captain: "They shuffle as they walk."  
—Northeastern News

Who writes and writes  
And this from the Daily Californian:  
"To the Editor:  
"What are you girls going to do about Sadie Hawkins day? It's only three weeks away, and I want to be chased. I've got a lonely heart."  
"Barney Barnsmell,"

And writes and writes.  
—Los Angeles Collegian.

This for all you kids who let those Corvallis flies get in your hair. And because we aim to please, we let you choose your own ending:  
"The customer entered the cafe, sat down and ordered his menu. When a bowl of tomato soup was set before him, he called, "Hey, waiter, there's a fly in my soup."  
"Select your answer from these:  
1. Shh, not so loud; everyone will want one!  
2. Yes, I know. We find drowning more merciful than the swatter.  
3. Well, whattaya expect for a dime, a humming bird?  
4. That's all right; there's no extra charge.  
5. Grab your fork. Maybe a trout will come to the surface!"  
—The Oregon Emerald.

Now Playing  
The dramatic story of the year; that astounding sequel to "Citizen Kane"; his mother's story, "I Raised Cain," starring Helen Highwater, Worsen Felles, Glark Cable, Minnie Hahahehe, Smelexis Smiff, Ledy Hamarr, Cling Brosby and a lot of other people plus 56 free Dodges given away.  
—Los Angeles Collegian.

"As the undertaker said when he picked up the guy who had just swallowed a quart of shellac: 'Some finish!'"  
—Northeastern News.

Mrs. Williams to Attend Nutrition Meeting  
Mrs. Jessamine Williams, professor of foods and nutrition, will go to Portland today to attend a meeting of the committee on nutrition of a school child.

This committee is now concerned with making the school lunch part of the educational program of every public school in Oregon. Part of the committee program is devoted to discussing the advisability of having hot lunches for school in place of the usual cold ones.

Dog Bite Distinguished  
PARADISE, Calif. (UP)—Capt. John D. Hubbard, brother of Father Hubbard, the "Glacier Priest," is not going to sue Errol Flynn although he was bitten by one of the actor's mountain lion-hunting dogs. Hubbard says his only regret is that the bite did not leave a scar that he could have shown to friends.

Wooden Shoes  
Thank you Gene Arant For your cooperation If we could but collaborate We'd raise the Rookies' indignation.  
The thought you bring is mighty good Of box shoes preventing colds. They're very sensible indeed As all the girls do know.  
I think the boys who shake their heads Who turn and stare and jibe Just don't stop to realize The benefits derived.  
It isn't just on colds avoided That girls should be complimented But Rookie! If you've never worn them For comfort they're recommended. The Rambling Junior.

## Spot News in Review

WASHINGTON—Sinking of the destroyer Reuben James has brought an immediate demand in the senate for a quick vote on the neutrality revision bill.

The senate came to life as Senator O'Daniel of Texas asked for unanimous consent to take an immediate vote on the bill. But the effort was futile.

Hardly had he spoken when Connecticut's Senator Maloney jumped to his feet, declaring an "objection." This one negative vote blocked the motion.

Senator Duca of Illinois said that he would have objected, if Maloney hadn't. Lucas, who is an administration supporter, said he believed the bill should be discussed fully.

RUSSIANS RETREAT IN CRIMEA  
BERLIN — Berlin claims German blitzkrieg troops are driving hard on the heels of Russian forces fleeing in wild retreat in the Crimea. It adds that Nazi forces near Leningrad are pushing east to join Finnish troops and completely encircle the besieged city.

The Germans say their final drive on Moscow is being delayed by the bottomless muds. A Berlin broadcast claims three cities west of the Russian capital—Mozhaisk, Maloyarslavets and Volokolamsk—have been in German hands for several days.

Late Russian reports confirm that Soviet defenses have been broken at Tula, about 100 miles south of Moscow, and there is fighting in the city's suburbs.

Germany admits strong Russian counter-attacks in the Moscow area, but says all are being driven back.

Russia tells of bitter fighting in a dozen or more sectors with the tide of battle surging first one way and then another. South and southwest of Moscow the Germans are said to have succeeded twice in crossing the Nara and Oka rivers, only to be pushed back each time.

And north of Moscow, at Kalinin, the Germans reportedly have thrown Austrian, Rumanian and Hungarian troops into the battle.

British experts fear the situation around Moscow is so critical that a major breach in the defense lines anywhere would have the gravest consequences.

The situation in the Crimea also is regarded as most dangerous, due to the menace to the oil-rich Caucasus. It isn't clear whether the Germans plan to invade the Sevastopol naval base or toward the Caucasus first. But in either case they are expected to run head-on into the Soviet Baltic fleet.

To reach the Caucasus the Germans will have to bridge the Kerchenski straits—a four-mile stretch of water. They would inevitably encounter the Soviet fleet in this territory. But it is pointed out that the Nazis could wheel up heavy artillery for a ship-to-shore engagement.

CREWMEN RESCUED FROM DESTROYER  
WASHINGTON—The navy department has just announced that 44 crewmen from the torpedoed destroyer Reuben James have been rescued.

The navy said that it had no further information at this time on the remaining members of the crew of the destroyer. The Reuben James was engaged in convoying when it was sunk yesterday morning.

The navy did not release the names or number of men aboard the sunken ship. However, destroyers of this class usually carry about 114 enlisted men and seven officers.

The navy's report on the initial rescues is the first received on the fate of the crew since the cryptic announcement of the sinking.

ARMY TAKES OVER AIR PLANT  
BENDIX, New Jersey — The wheels have started turning at the Bendix, New Jersey, Air Associates plant under the supervision of the United States army.

Army officials expect the plant to be operating full blast by tomorrow. Observers at the factory tonight say operations appear to be fully resumed.

The captive coal mine dispute remains unsettled but the miners are back at work and an 11-man mediation board has been selected to decide the merits of the demands made by John L. Lewis for a union shop. The board is made up of four representatives of labor, four of management and three taken from the public.

The sole remaining major strife on the defense labor front is an AFL welders jurisdictional dispute on the Pacific coast. But it is hindering work on one billion dollars worth of defense shipbuilding orders.

President Roosevelt is remaining silent on any plans he has for anti-strike legislation. However, he did say that the strike situation is worse than it has been, but not as bad as it was when the defense program started.

His order to the army to take over the Bendix plant is interpreted as a warning that from now on he plans quick action to forestall interruptions in armament production.

CHINA HURLS MIGHT IN NEW ATTACK  
NEW YORK—Reported heard in New York is the statement that Generalissimo Chiang Kai-Shek has hurled his troops against the Japanese in a new offensive in north China.



## Do You Know . . .

What is the Committee on Student Affairs? What is the Social Life Committee?

All those activities which are not academic and which, by provision of the ASOSC constitution, are not under the jurisdiction of the Intercollegiate Athletic board and the Educational Activities board are supervised by the Committee on Student Affairs. This means the social life and general interests of all students, including functions of AWS, the four classes, those of the clubs and various schools, honoraries, living groups and the service groups.

It does not pass rules but approves or disapproves, as the case may be, all social functions or student activities that are held. Appeal to the president is available to those receiving unsatisfactory decisions. It has within its scope a complete cross-section of student life, other than classwork, thus enabling it to keep a complete picture and better unify our social life.

The committee desires to keep activities within bounds to allow time enough for classwork and preparation. It devotes its efforts to assisting students with social and living problems so that they may get the most from college life.

Membership  
Both students and faculty are represented in this group. The faculty hold positions of contact with students as well as the student members.

Student members are Andy Landforce, ASOSC president; Joe Ross, Barometer editor; Karl Berman, president of interfraternity council; Harold Nelson, president of independent council; Phyllis Gray, panhellenic president; Adele Knerr, AWS president; and Douglas Carter, M.U. president.

Faculty membership includes: Mrs. Buena M. Maris, dean of women; P. P. Lucey, director of educational activities; H. T. Vance, chairman of student building committee; C. V. Langdon, director of physical education; and U. G. Dubach, dean of men, who is chairman of the committee.

This committee is sometimes referred to as the Committee on Student Interests.

Social Life Committee  
A subcommittee of the Student Affairs committee, it is the Social Life committee that carries out the routine of the policies of the Student Affairs committee. Each Wednesday at noon it meets to review and confirm the official social schedule for the week before releasing it for publication.

Mrs. Mabel Winston, secretary assistant in charge of women's employment, acts as chairman of this committee which also includes one representative from each class and both Greek and independent members. This year these members are Charles Dunham, senior in secretarial science; Jeanne Hetherington, junior in home economics, and Gertrude Kirsch, sophomore in home economics. Representing the faculty is J. C. Othus, associate professor of mechanical engineering.

Classified Ads  
WANTED—A home economics student to do part time work for board and room and for wages. Phone 1235-J.

Kratavil's Shoe Shop  
Quality Repairing  
118 S. 3rd

EXPERT WATCH REPAIRING  
Wm. KONICK  
Jeweler  
Corner Second and Madison St.  
S. P. WATCH INSPECTOR

HITS THE SPOT  
PEPSI-COLA  
AMERICA'S BIGGEST NICKEL'S WORTH  
PEPSI-COLA BOTTLING COMPANY  
CORVALLIS, OREGON

OKAY, GANG, TONIGHT — IT'S — KENTI —  
With the Friendly Band  
Al Benedict  
and "TORCHER" RUTH BARTON  
Just North of Independence

Let U Record  
1561 Mon

Saturday, Nov  
Be Go  
Good mo  
the day aft  
ber—and th  
that Coach  
Ebright's p  
this morn  
But in ac  
to furnish  
Lon Stiner's  
tangles with  
dazzle," the  
Even the  
fake reverse  
be in trying  
And the  
the stands i  
up to its reg  
instead of h  
The "ga  
Americans"  
tie yesterda  
ineligible, l  
to whether  
annual affai  
Now aga  
football whi  
we turned i  
even that w  
Ling MISSE  
However  
gram to his  
claims he ha  
we are givin  
Ling Po!  
OREGON  
like your Li  
Hewevah, w  
Velly simple  
week. And a  
they lose thi  
WASHIN  
Washington,  
tremely quic  
OREGON  
things so "I  
learned valu  
have little t  
STANFO  
burst last w  
color on new  
CALIFOR  
beat northe  
dish out fin  
MINNES  
for while, b  
neath Wildc  
NOTRE  
army mule  
TONKA  
(This is to  
Continue  
LA are at pr  
for second  
Oregon State  
King's-X gam  
Glenn Bying  
will be honor  
the game. Th  
will be able  
more this sea  
fore they gra  
Idaho is ex  
gon State jus  
fense is sup  
Everything fr  
verses with a  
forward pass  
The Best  
Julia  
Barb  
Next to M  
Haircut 33  
Ope  
Let U  
Record  
C  
1561 Mon



# Means Victory Over Vandals

## Between the Goalposts

BY AL WIENER  
Assistant Sports Editor

Good morning! This is the day after Hallowe'en. And the day after the "blackout." It is also the first of November—and the morning before the Foresters' ball. It's the day that Coach Stevens' Oregon State rowing team races Ky Ebricht's powerful University of California rowers at 10:30 this morning on the Corvallis "estuary."

But in addition to all this, today is the day that is going to furnish us with some first class football entertainment. Lon Stiner's Oregon State varsity, beginning at 2 o'clock, tangles with the outstanding northwest exponent of "razzle dazzle," the University of Idaho Vandals.

Even though you don't know a single wing back from a fake reverse, this is one you shouldn't miss. The fun will be in trying to figure out where the ball is.

And the Beavers are liable to need plenty of support from the stands if Idaho Coach Francis Schmidt's trickery lives up to its reputation, so let's see you out there at the game instead of home at the radio today.

The "game of the century" between the varsity "All-Americans" and the freshmen finally ended in a scoreless tie yesterday. The All-Americans are varsity holdovers and ineligible, but the tie still leaves in doubt the question as to whether they or the rooks are the better team. It's an annual affair, but the rooks have never won.

Now again it comes time to pick today's winners in the football whirl. We thought we had the perfect solution when we turned it over to Ling Po last week, but it seems that even that wily oriental couldn't figure the Coast conference. Ling MISSED SIX OUT OF SEVEN, which is not so sharp.

However, Ling Po got busy last week and sent a telegram to his cousin back in Shansi province in China. He claims he has finally figured out the key to the problem, so we are giving him just ONE MORE CHANCE. Take it away, Ling Po!

OREGON STATE-Idaho. Ling Po last week find situation like your Li'l Abner say "Amoosing but not confousing." Hewevah, we Chinese velly velly deep. We find solution. Velly simple. All team which lose last week—they win this week. And all team which win last week, except Stanford—they lose this week, so, we pick Beaver.

WASHINGTON-Montana. Last week score, Stanford 14, Washington 7. This week Husky chase grizzly up tree extremely quickly.

OREGON-Washington State. Hon. Cougar will not find things so "ducky" this week as last. Hon. Duck having learned valuable hunting lesson from Bruin last week will have little trouble.

STANFORD-Santa Clara. Honorable Bronco had bubble burst last week. Stanford Indian will paint cardinal victory color on new bubble.

CALIFORNIA-UCLA. Story that southern branch will beat northern branch is Bear story. Northern branch will dish out fine football lesson.

MINNESOTA-Northwestern. Gopher will crawl in hole for while, but while there will undermine foundations underneath Wildcat.

NOTRE DAME-Army. All Irishmen learn how to ride army mule at early age. 'Nuff said.

TONKAWA JC-Murray Aggies. Rigure scoreless tie. (This is to keep up average.)

### OSC-Idaho Game

(Continued from Page 1)

LA are at present in a five-way tie for second place. Washington, Oregon State and Stanford play King's-X games today.

Glenn Byington and Jim Busch will be honorary co-captains for the game. They are seniors and will be able to play only once more this season on Bell field before they graduate.

Idaho is expected to show Oregon State just what a tricky offense is supposed to look like. Everything from double fake reverses with a double lateral and forward pass to the old reliable

"Statute of Liberty" play can be found in the list of Idaho's tricks.

Oregon State, on the other hand, though it does use some trick plays, will stick to straight football. The main Beaver offensive weapon is the combination in the backfield of Don Durdan and Bob Dethman. Durdan is a left hander who runs right and throws left, while Dethman runs left and throws right. Either of these men can start a run and then pass or continue an end run or cut in through tackle, depending on the opposing team's defensive setup. Lewis Shelton, fullback, is on hand to do the line plunging duties.

Beavers have been practicing all week on defense against Idaho plays as well as polishing up their own pass attack. However, the Vandals have been improving in their play each week as the season has progressed. Their backfield will outweigh the Oregon State backfield, but the lines will be about equal.

Manson and Micklich will be the big guns of the Vandal attack, and long passes from Manson to ends Milo Anderson and Berlius will be a constant threat.

## Sigma Alpha Epsilon Leads Mural Football, Hoop Play

Still ruling the intramural roost this weekend is Sigma Alpha Epsilon, which is the only living organization on the campus to have both an undefeated touch football team and unbeaten "A" basketball squad. The football team came within a hair's breadth of losing to Sigma Phi Epsilon last week, but it came through with an overtime win of 1-0.

The football leagues go into the semi-final playoffs next week with SAE clashing with the Kappa Sigs, and the Betas playing the Phi Sigs in the fraternity league. The independent and co-ops will also have their playoffs during the week.

Maintaining a perfect record so far in the "A" casaba league so far are Sigma Alpha Epsilon, Phi Delta Theta, Lambda Chi Alpha, Theta Chi, Alpha Gamma Rho and Sigma Nu, fraternities; the independents are River Rats and Highlanders; and Beaver Lodge, co-op.

### "A" Basketball Standings Third Round League A

W. L. Pct.	
Phi Delta Theta	3 0 1.000
Weatherford	2 1 .666
Alpha Tau Omega	1 1 .500
Delta Sigma Phi	1 2 .333
Chi Phi	1 2 .333
Alpha Sigma Phi	0 2 .000

### League B

W. L. Pct.	
Lambda Chi Alpha	2 0 1.000
Poling	2 1 .666
Beta Kappa	2 1 .666
Theta Xi	1 1 .500
Cauthorn	1 2 .333
Alpha Chi Rho	0 3 .000

### League C

W. L. Pct.	
Sigma Alpha Epsilon	3 0 1.000
Theta Chi	3 0 1.000
Sigma Phi Epsilon	2 1 .666
Sigma Phi Sigma	1 2 .333
Kappa Sigma	0 3 .000
Kappa Delta Rho	0 3 .000

### League D

W. L. Pct.	
Alpha Gamma Rho	2 0 1.000
Delta Tau Delta	2 1 .666
Beta Theta Pi	2 1 .666
Sigma Chi	1 1 .500
Phi Sigma Kappa	1 1 .500
Phi Gamma Delta	0 3 .000

### League E

W. L. Pct.	
Sigma Nu	3 0 1.000
Delta Upsilon	2 1 .666
Sigma Pi	2 1 .666
Pi Kappa Phi	1 1 .500
Delta Chi	0 1 .000
Buxton	0 2 .000
Hawley	0 2 .000

### "B" Basketball Standings League A

W. L. Pct.	
Sigma Nu	2 0 1.000
Cauthorn	1 0 1.000
Sigma Phi Epsilon	1 1 .500
Beta Theta Pi	1 1 .500
Alpha Tau Omega	0 2 .000
Kappa Delta Rho	0 2 .000

### League B

W. L. Pct.	
Sigma Chi	2 0 1.000
Sigma Nu (C)	1 0 1.000
Poling	1 1 .500
Phi Sigma Kappa	1 1 .500
Delta Chi	0 1 .000
Sigma Alpha Epsilon	0 2 .000

### League C

W. L. Pct.	
Delta Tau Delta	2 0 1.000
Phi Delta Theta (B)	2 0 1.000
Lambda Chi Alpha	1 1 .500
Theta Chi	1 1 .500
Kappa Sigma	0 2 .000
Phi Delta Theta (C)	0 2 .000

### Independents

W. L. Pct.	
River Rats	2 0 1.000
Triangles	2 0 1.000
Weaver Boys	2 0 1.000
Van Buren Tigers	0 2 .000
Casanova Club	0 2 .000
Spartans	0 2 .000

### League B

W. L. Pct.	
Highlanders	2 0 1.000
Heckarts	2 0 1.000
Nelson House	1 1 .500
Kings	1 1 .500
Merry Macs	0 2 .000
White	0 2 .000
House Manglers	0 2 .000

### Co-op House League

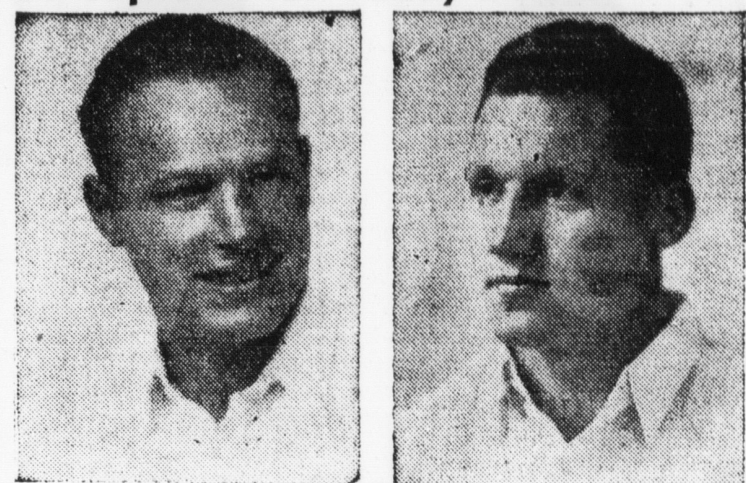
W. L. Pct.	
Beaver Lodge	2 0 1.000
Kupono	1 1 .500
Nu Octa Rho	1 1 .500
Campus Club	0 2 .000
Maple Manor	0 1 .000

### SPECIAL Used Royal Portable TYPEWRITER

115 North 16th Phone 1494

The Lewellyn School of Dancing and Dramatics Phone 1130-R

### Co-captains for Today's Game



Named by Coach Lon Stiner to be honorary co-captains for the clash with Idaho today on Bell field are two seniors, Glenn Hyington, left tackle, and Jim Busch, fullback.

### PROBABLE LINEUPS

Oregon State	Weight	Pos.	Weight	Idaho	Player	No.
64 Zelleck	180	LE	185	M. Anderson	32	
68 Wickert	193	LT	195	Konopka	49	
63 Halverson	230	LG	190	Lockey	46	
95 Greenough	185	C	185	Aschenbrenner	3	
98 Chaves	190	RG	210	Rowe	45	
92 Saunders	198	RT	215	J. Piedmont	42	
36 N. Peters	185	RE	200	Berlius	36	
58 G. Peters	195	Q	185	Nixon	9	
26 Dethman	185	LH	165	Manson	5	
39 Durdan	170	RH	182	Chandler	10	
24 Shelton	190	F	188	Micklich	8	

Average weight of lines: Oregon State, 194; Idaho, 197. Average weight of backfield: Oregon State, 185; Idaho, 180. Officials—Doug Lowell, referee; Dan McMillan, umpire; Archie Buckley, head linesman; Eldon Jenne, field judge.

### Intramural Schedules

TOUCH FOOTBALL Tuesday, November 4 Co-op League

Campus club vs. Maple Manor Field 1, 4:30 o'clock  
Beaver Lodge vs. Kupono Field 2, 4:30 o'clock

Independents Wednesday, November 5 Play-off

Phi Sigma Kappa vs. Beta Theta Pi Field 1, 1:00 o'clock  
Kappa Sigma vs. Sigma Alpha Epsilon Field 2, 1:00 o'clock

Independents Monday's winners play-off league championship. Field 2, 4:30 o'clock

BASKETBALL Monday, November 3 Co-op House League

Beaver Lodge vs. Maple Manor Court 1, 7:00 o'clock  
Kupono vs. Nu Octa Rho Court 3, 7:00 o'clock

Independent League A Weaver Boys vs. River Rats Court 1, 7:45 o'clock  
Van Buren Tigers vs. Casanova club Court 2, 7:45 o'clock  
Quints vs. Triangles Court 3, 7:45 o'clock

Independent League B Highlanders vs. Merry Macs Court 1, 8:00 o'clock  
Kings vs. Heckarts Court 2, 8:30 o'clock  
Nelson House vs. Nu Octa Rho (B) Court 3, 8:30 o'clock

Tuesday, November 4 "A" Teams—4th Round

Poling vs. Alpha Chi Rho Court 1, 7:00 o'clock  
Sigma Chi vs. Alpha Gamma Rho Court 2, 7:00 o'clock  
Delta Chi vs. Sigma Pi Court 3, 7:00 o'clock

Pi Kappa Phi vs. Hawley Court 1, 7:45 o'clock  
Alpha Sigma Phi vs. Chi Phi Court 2, 7:45 o'clock  
Alpha Tau Omega vs. Weatherford Court 3, 7:45 o'clock

Wednesday, November 5 Delta Sigma Phi vs. Phi Delta Theta Court 1, 7:00 o'clock  
Theta Xi vs. Cauthorn Court 2, 7:00 o'clock  
Lambda Chi Alpha vs. Beta Kappa Court 3, 7:00 o'clock

League C Sigma Alpha Epsilon vs. Kappa Delta Rho Court 1, 7:45 o'clock  
Theta Chi vs. Sigma Phi Epsilon Court 2, 7:45 o'clock  
Kappa Sigma vs. Sigma Phi Sigma Court 3, 7:45 o'clock

Beta Theta Pi vs. Delta Tau Delta Court 1, 8:30 o'clock  
Phi Sigma Kappa vs. Phi Gamma Delta Court 2, 8:30 o'clock  
Delta Upsilon vs. Buxton Court 3, 8:30 o'clock

Thursday, October 6 "B" Teams League A

Alpha Tau Omega vs. Cauthorn Court 1, 7:00 o'clock  
Kappa Delta Rho vs. Sigma Nu Court 2, 7:00 o'clock  
Sigma Phi Epsilon vs. Beta Theta Pi Court 3, 7:00 o'clock

League B Poling vs. Sigma Chi Court 1, 7:45 o'clock  
Sigma Alpha Epsilon vs. Delta Chi Court 2, 7:45 o'clock  
Sigma Nu (C) vs. Phi Sigma Kappa Court 3, 7:45 o'clock

League C Delta Tau Delta vs. Lambda Chi Alpha Court 1, 8:30 o'clock  
Theta Chi vs. Phi Delta Theta Court 2, 8:30 o'clock  
Phi Delta Theta (B) vs. Kappa Sigma Court 3, 8:30 o'clock

### Dairy Club Initiates Eighteen Neophytes

Eighteen neophytes were initiated into the dairy club Tuesday. New members are Don Trigg, Bob Peck, Keith Young, Bill Foster, Edwin Smith, Charles Liles, Bob Anderson, Winston Majors, Glen McIntosh, George Weiks, Paul Maris, Kenneth Kerby, Chester Dixon, Walter Crouse, Gordon Hofstetter, Merlin Carson, Vernon Cox and Wayne Harris.

### Triples Born in Seattle

SEATTLE, Oct. 31-(UP)—Triplets were born last night in west Seattle to Mr. and Mrs. Angelo Dapas, auto parts store proprietor.

HOW ABOUT A COKE? Let's go to the Electric Lunch

## Beaver Crewmen Race California Today

### Oregon State to Battle Golden Bears on Mile and Half Course

By Rod Dalles Today at 10:30 A.M. the Willamette river will be the scene of the first crew race of this season when the challenging California crew and the Oregon State varsity fight the battle for victory up the mile and one-half course.

The California crew arrived with their Coach Ky Ebricht Thursday night and have stayed at fraternities on the campus. They had two short workouts Friday rowing in the "Beaver." "They set the boat up well," said Put Livermore, stroke for the Beavers.

The crews will race up stream and finish at the Corvallis bridge. They'll leave the wharf at 10:30 to go the starting point a mile and one half down the river.

Last fall California beat Oregon State by only six feet here, and in the spring on the Oakland estuary they won by two lengths. This is the first major contest of the season for the Beaver oarsmen and should prove their hardest as they have been turning out for only three weeks. Ky Ebricht comes with a husky squad of sophomores to match against Coach Ed Stevens varsity sweepsters. "The Beaver lads had smooth form in last night's turn-out," said Stevens last night.

Bond, Bronson, Maris Dougan and Purvine, veteran coxswain, were on the varsity last year and make a stable power plant for this year's crew. Bob Larson, transfer from California, rowed for Compton Junior college last year. The other members are from last year's victorious Junior varsity that won at the University of British Columbia by three lengths.

The OSC oarsmen have looked good all fall term in comparison to teams in previous years. They have the power, timing and smoothness that a crew needs. Whether they can click together will be determined this morning.

The lineup is as follows: Oregon State California Position

Darst Bow Gardipee Buffington 2 Newby Bond 3 Olson Larson 4 Hofmann Emigh 5 Meyers Bronson 6 Miller Maris 7 Hayden Dougan 8 Stroke Livermore Purvine 9 Cox Burton

REICHAERT'S Offers Quality Work and Prompt Service. Cleaners, Tailors, Hatters. Moderate Prices—Cash and Carry Savings. 1454-58 Jefferson St. Phone 19 Corvallis, Oregon

LOST AND FOUND Memorial Union Desk October 28 to 31 Books Forest Mensuration Clothing Green and white slip-on sweater Blue and white plaid jacket Man's black coat Yellow slinker jacket White mittens Woman's tan mesh gloves Wool plaid kerchief Flowered kerchief Miscellaneous Alpha Gamma pledge pin Black and yellow Sheaffer pencil Black Eversharp pencil Brown laminated Parker pencil Maroon Parker vacuumic pen Green Parkette pen Brown leather money case Tennis shoes

Authorities Begin Search for Plane PORTLAND, Oct. 31 (UP)—Authorities have begun a search for a missing airplane overdue for nearly a week on a flight from Eugene to Seattle.

The plane took off from the Eugene airport last Saturday morning and has not been seen or heard from since. Aboard the ship were F. L. McKenna, president of the Knu-Size Manufacturing company of Glendale, Calif., and the pilot, a man identified only as Mr. Jefferies.

TUXEDO SUITS 9.95 Single breasted from our rental stock. Everyone in good condition. No alterations.

Extra Special O'COATS 29.50 WORTH \$40 5 only in sizes 35 to 40 in grey or navy. 100% finest wool fleece.

BRUNSWICK CARNIVAL WEEK Nov. 1st to 9th inclusive TIME TO GET IN ON LARGE PRIZE LIST

Corvallis Bowling Gardens

Oregon State Transfers—Metal Plates and Stickers. Fraternity Crest and Greek Letter Transfers. Stiles Book Shop Monroe St. at 26th

The Best for Less at Julian Hotel Barber Shop Next to Majestic Theater Haircut 35c, Shave 25c Open 8 to-8

Let Us Make a Photographic Record of Your Social Activities Christian's Photo 1561 Monroe Phone 328-M

SPECIAL Used Royal Portable TYPEWRITER The Lewellyn School of Dancing and Dramatics Phone 1130-R

Oregon State Transfers—Metal Plates and Stickers. Fraternity Crest and Greek Letter Transfers. Stiles Book Shop Monroe St. at 26th

BRUNSWICK CARNIVAL WEEK Nov. 1st to 9th inclusive TIME TO GET IN ON LARGE PRIZE LIST Corvallis Bowling Gardens Oregon State Transfers—Metal Plates and Stickers. Fraternity Crest and Greek Letter Transfers. Stiles Book Shop Monroe St. at 26th



### Thirty Miners Declared Dead In Mine Blast

#### 5 Bodies Recovered To Date; Explosion Blamed on Damp

EDMONTON, Can., Oct. 31 (UP)—Thirty miners are dead in the explosion that wrecked part of the big Brazeau colliery yesterday. At least 30 men were trapped in the blast. Five bodies have been removed from the debris so far.

A rescue squad worked four hours breaking through a barrier of fallen coal and timbers before reaching the spot where the five bodies were found. Search now is continuing for the others but members of the squad express the belief that all of the entombed miners are dead.

Officials say the cause of the blast cannot be determined immediately. However, there are indications that it may have been due to coal damp.

The workings where the explosion occurred are located at the end of a Canadian National railway line, 130 miles southwest of Edmonton. The area is part of the foothills of the Canadian Rockies.

### Six Fatalities Reported to OICC

SALEM, Oct. 31 (UP)—Six fatalities and a total of 884 accidents were reported to the Oregon Industrial Accident Commission during the week ending yesterday.

### WHITESIDE CORVALLIS' FINEST THEATRE Starting Sunday

#### REVEALED!

The secret longings...the strange emotions...hidden in the mind of a man!



One of the finest pictures of 1941...with the star cast of the year!

SPENCER TRACY INGRID BERGMAN LANA TURNER  
in VICTOR FLEMING'S Production of  
**Dr. Jekyll and Mr. Hyde**

—plus—  
CLARK GABLE LANA TURNER  
**HONKY TONK**

—plus—  
FRED ASTAIRE PAULETTE GODDARD  
in  
**'Second Chorus'**

### Bennie Beaver Will Face Vandal

Who will be the fair lady that will be dragged from the galleries by the wicked villain? Who will dare to save her from his terrible clutches? Who? Why brave Bennie Beaver. He alone will face the treacherous vandal, and bravely save the damsel and Oregon State's honor.

A snappy workout will entertain all OSC rooters at half-time. The rally squad has planned the stunt and will depict all parts, such as the dreaded Vandal and the Beaver.

### Rifles Will March On Armistice Day

#### 2 Platoons Drill For First Display

Oregon State Rifles will march in the Armistice day parade in Albany, announced Dave Gross, junior in engineering, last night at OSR drill in the armory.

Two platoons, engineer and infantry, were drilled in close-order company drill in preparation for the coming Armistice day parade.

This will be the first public appearance of the OSR this term.

There were 73 engineers and 60 infantrymen present for drill last night. All men who have been members before and who did not turn out last night will have one more chance to become members this term by reporting for drill next Tuesday night.

Fred Morse, senior in engineering, gave a short demonstration and talk about the work done by the Manual Masters, as there are still a few vacancies in that organization.

### Atwood Will Speak At Wesley Forum

Dr. W. M. Atwood, professor of plant physiology, will speak on "Science and Religion" at the Wesley foundation forum hour tomorrow night at 6:30 o'clock.

Nona Zimmerman, junior in secretarial science, will lead the worship service and Pete Larson, senior in science, will sing a solo. Preceding the forum hour will be the sunset hour at 4:30 o'clock, to which all present and former members of Wesley foundation are invited, said Francis Watenpaugh, junior in home economics and chairman of the party.

A sweetheart theme, with red and white flowers placed about the candle-light room, will serve as background for a surprise announcement to be disclosed at that time. Former Wesleians who are now teaching will pour at the tea table.

Mary Jo Cox and Rita Harris, sophomores in home economics, are head of the hostess and welcoming committees respectively.

**MAJESTIC**  
Starting Sunday  
Two Features  
**KNUTE ROCKNE**  
**ALL AMERICAN**

**PAT O'BRIEN**  
GALE PAGE-RONALD REAGAN  
DONALD CRISP  
Directed by LEVY BACON  
A WARNER BROS. First National Picture

—plus—  
FRED ASTAIRE PAULETTE GODDARD  
in  
**'Second Chorus'**

### Why Hawaii? 20 Century Fox Has the Same

#### Hollywood Stage Set Converted Into Imitation Island

HOLLYWOOD, Oct. 31 (UP)—You don't have to go to Hawaii. Just go out to stage 14, at 20th Century studio. You can see Hawaii right there, maybe better than if you went to Honolulu. On the sound stage, they can even control the weather.

There are two whole acres of this Hawaiian set, built for the picture called "Song of the Islands." It is one of the most breath-taking backgrounds ever constructed in Hollywood. The hundred and ten Polynesians working in the picture, admit that nothing in Hawaii itself can top the scenery provided by the art director.

The two-acre floor is covered with sand and grassy sod, tons of it, for Betty Grable and Thomas Mitchell and Jack Oakie to run around on. There are coconut palms, eighty feet high, and a forest of Hawaiian tree-fern that shoot up to 30 feet. The deep green foliage is varied here and there with flame-colored coral trees, with hibiscus in every shade from peach to scarlet, and with the purple bougainvillea vine.

As if that weren't enough, lilies and azalea, trumpet flower and orchid, grow on the ground and the roots of trees. And in one corner there's a cliff, 40 feet tall, with a waterfall or brilliant blue pouring down it. Real water. The trees and flowers are real, too—from the studio nursery. However, the sunlight is provided by seventy huge arc lights in the ceiling.

The horizon—or purple mountain and dark valley—was created by mural painters, on a canvas 10,000 feet square. But the Hawaiian larks and orange finches that try to fly into it, are the genuine thing.

Yet what delighted the Polynesian extras, even more than the scenery, was the preparation made for the native feast. On the floor of the forest, the prop men dumped six tons of banana, papaya, passion fruit and pineapple. There was nothing make believe about the eating that those natives did.

### New Ships to Ply Defense Trade Route

WASHINGTON, Oct. 31 (UP)—Two Liberty ships recently launched by the Oregon Shipbuilding corporation have been assigned to American operators for use on defense trade routes.

The maritime commission chartered the Star of Oregon to the States Steamship company of Portland, for delivery November 18, and the Meriwether Lewis was chartered to the American Mail lines for delivery November 25.

A third liberty ship, the John C. Fremont, was allocated to the American President lines. It will be delivered November 24.

### Roosevelt Blamed For Loss of Lives

WASHINGTON, Oct. 31 (UP)—A Vermont senator places the blame squarely on President Roosevelt for whatever lives may have been lost aboard the torpedoed destroyer, Reuben James.

"When the lend-lease law was enacted we were told it would not mean conveying—yet our ships have been conveying, and have been ordered by the president to hunt down and sink ships of another nation with which we are not at war," said Aiken.

MCA Presents  
**Ed Fitzpatrick AND HIS ORCHESTRA In Person**  
Willamette Park  
Eugene  
Sunday, Nov. 2  
5 to 7 and 9 to 12 P.M.

### Campus Bulletins

All Barometer day editors will meet in the Barometer workroom Monday at 5 o'clock.

Mrs. R. W. Simmons will lead a forum, "Standing Up for Your Religion," at Westminster house Sunday at 6:30 o'clock.

Religious leaders council will meet Sunday morning at the First Christian church at the corner of Sixth and Madison streets for 8 o'clock breakfast. Those who are planning to attend should make reservations with Marie Hunt in education 208 before Saturday noon.

There will be a short Phi Chi Theta meeting Monday at 5 o'clock in the Phi Chi Theta room.

The college Sunday school class of the First Methodist church will meet tomorrow morning in the first-floor parlors of the church, with Dr. U. G. Dubach, dean of men, as leader.

All Home Economics club dues collectors should get their receipt books and mmm tickets in the AWS office at 11 o'clock today or after the game at the Delta Delta house.

First band will meet in the museum building at 12:30 o'clock in full dress uniform.

### Insect Collections Increase Rapidly

The entomological collection at Oregon State college has made rapid growth during the past year, reported R. L. Post, technician and curator of entomology.

It now contains approximately 130,000 specimens of insects. This is an increase of about 12,000 over last year. Progress has also been made in naming specimens, the number authentically determined having increased from 68,000 to 96,500.

In the collection there are now 285 types, paratypes and cotypes which are valuable for reference. A microscopic slide collection contains 2,100 minute and fragile forms.

This year 1,650 specimens valued at \$95 were donated to the insect collection. Those who donated are H. E. Ewing, former staff member at Oregon State; Max Doty, former graduate assistant in botany now at Stanford; John Pierson, Portland, former OSC student; Lee Motley, Durkee; Mr. and Mrs. Kenneth Fender, McMinnville; and H. W. Prescott, former OSC entomology student now in Spokane, Wash.

### Stone Chipping of Arrowheads Hobby

SALT LAKE CITY (UP)—American Indians long since have abandoned the practice of making arrowheads.

But their arrowhead-making technique is being preserved and practiced by a white brother—J. P. Lampert, of Ogden, Utah, a certified member of the Shoshone tribe.

When Lampert was a youth, he lived among the Indians. His father, a prospector, worked along the banks of the Snake river, panning gold, and young Lampert spent his time in the tribal camps, learning Indian language and lore.

His mother made his shirts from red outing flannel, a fact which accounts for the name the Indians gave him. It means, when translated, "Man Dressed in Red."

In later years, he traded with the Indians, and acted as an interpreter for them. Eventually, the Shoshones adopted him into their tribe and taught him many of the methods used in making primitive weapons. Among them was the arrowhead-making method which he has since converted into a hobby.

Lampert, a watchman in the Ogden railroad yards, spends his spare time wandering about the hills and plains in search of stones suitable for the work. His only tools are a piece of buckskin which looks like a finger from a glove, a piece of bone, a flat piece of copper and an old rusty nail. The arrowheads are made by scraping and chipping the rock. At the present he has a collection of about 10,000. Each arrowhead requires about four minutes work.

Mighty important in this man's Army

It's Chesterfield

Follow the lead of Adrienne Ames and send the men in the camps the cigarette that's Definitely Milder and Better-Tasting

Everything about Chesterfield is made for your pleasure and convenience... from their fine, rightly blended tobaccos to their easy-to-open cellophane jacket that keeps Chesterfield always Fresher and Cooler-Smoking.

Buy a pack and try them. You're sure to like them because the big thing that's pushing Chesterfield ahead all over the country is the approval of smokers like yourself.

EVERYWHERE YOU GO They Satisfy

Copyright 1941, LIGGETT & MYERS TOBACCO CO.

ADRIENNE AMES (star of stage, screen and radio) visits many training camps in her job as Chairman of the Entertainment Committee of the Home Legion. A carton of Chesterfields is a mighty welcome gift for the men in camp.

### Students Will Remodel Dry Kiln To Operate Under Fryer Principle

A complete remodeling job on the forestry school dry kiln is being carried on by a group of wood products students under the direction of Glenn Voorhies, assistant professor of wood products.

When work is completed the kiln will operate under the Fryer principle. Instead of loading the kiln with lumber parallel to the sidewalls, it will be loaded at right angles. Three small fans will be replaced by one large fan which will circulate the warm air across the face of the lumber. This new type of installation has recently been employed in mills in eastern and southern Oregon.

A. D. Hughes, assistant professor of mechanical engineering, has designed a new type of fan which will be tested and compared with a standard five-foot fan manufactured by the Moore Dry Kiln company.

The remodeled kiln will give Professor Voorhies and his classes in lumber seasoning an opportunity to study the effect of the rate of airflow on various woods and to determine the optimum rate. Studies of this kind have never been done on Douglas fir or west coast hemlock, according to Voorhies.

The present class in lumber seasoning which is doing most of the work on the kiln is gaining first hand information on the parts of a dry kiln. The work will be finished by the end of this term.

The boiler which formerly furnished steam for the kiln has been condemned by the state inspector. Until a new boiler can be secured design and construction of the new fan.

### Students Will Remodel Dry Kiln To Operate Under Fryer Principle

Moore Dry Kiln company and the Western Pine association have cooperated with Hughes in the

Since student labor is being used, the entire job will not cost more than \$25.

BRING FRIENDS NEAR by Postal Telegraph Telephone 1289 CONTINUOUS SERVICE Day and Night

For the Game—50c 75c \$1  
**Kessey's Flowers**  
308 Monroe Telephone 314

**STATE OREGON**  
Starts Today  
**ATORRID, TROPICAL HOLIDAY!**  
A four star musical with your four favorite stars!

Songs! Girls! Dances!

FALICE FAYE M. CARMEN MIRANDA  
JOHN PAYNE CESAR ROMERO

**WEEK-END IN HAVANA**  
In Technicolor  
with COBINA WRIGHT, Jr. GEORGE BARBIER SHELDON LEONARD BILLY GILBERT

Vol. XL  
Dance Both of H  
Seib Top For  
Two st...  
uled for...  
according...  
sophomore...  
chairman  
Paul S...  
play for...  
will start...  
ballroom...  
night fol...  
burning o...  
mission p...  
men and...  
that the...  
regular r...  
date ide...  
that, the...  
their atte...  
and the...  
which wil...  
Victory...  
Saturday...  
in the M...  
Top Hatt...  
play in...  
Tickets...  
pass from...  
Admission...  
couple. Th...  
will be so...  
Highly...  
rally danc...  
over KOA  
Ramsdell...  
'Mix'  
Commit...  
Mixer, wh...  
day night...  
morial U...  
been app...  
Ramsdell...  
president...  
the Amer...  
sponsors...  
Bob Wi...  
istry, is...  
and will...  
Harris, D...  
rue, Ted...  
Hedberg...  
Publicit...  
Paul Wil...  
istry, ass...  
Jim Saun...  
Lester He...  
Chairman...  
mittee is...  
chemistry...  
Cole, Jack...  
Hank G...  
George G...  
Dean D...  
War A...  
When...  
should em...  
of its mar...  
bach, de...  
discussing...  
Do" at a...  
terday aft...  
in the ho...  
ium.  
Following...  
Mrs. Flo...  
"Renrise...  
A silver...  
dents' rev...  
taken.  
Mrs. H...  
H. Mann...  
meeting.  
Loc...  
In P...  
Nearly...  
members...  
the world...  
coming to...  
State Ed...  
fice, und...  
Loey, inv...  
Homecom...  
UGLA fo...  
be held i...  
afternoon...  
has been...  
Some o...  
sent to al...  
the 80's...  
to membe...  
South Ar...  
lands and...  
Varsity...  
those mer...  
60 years