

OSC Granted Business Degrees Oregon State Barometer

Vol. XLIX, No. 119 Oregon State College, Corvallis, Oregon Wednesday, April 29, 1942

Board of Education Ends Commerce Issue

New Courses Designed to Meet Educational Needs of Oregon

Oregon State college was granted the right to give major work leading to "appropriate degrees" in business by the state board of higher education in action today concluding a long controversy over proposed restoration of the old school of commerce lost in the 1932 reorganization.

In the formal action, proposed by the curricula committee and passed unanimously, the board avoided use of the word "commerce" and left details of "courses, organizations and administration" to be worked out later. Acting President F. A. Gilfillan accepted the action, however, as essentially what had been sought by the college and pledged the institution to fulfill the "opportunity and obligation" it affords.

President Willard Marks explained that the action does not constitute restoration of the old school of commerce, but that it is designed to provide the necessary new degree work to meet the educational needs of the state from its land grant college under modern conditions.

In making its request previously the college had promised to put the new work into effect for not to exceed \$3000 the first year, and said that the final cost in addition to present work offered would be relatively small. The text of the enabling resolution offered by C. A. Brand, Roseburg, chairman of the curricula committee, follows:

"Resolved that the board authorizes a reorganization, beginning with the academic year 1942-43, to enable the Oregon State college to meet more adequately the needs of students primarily interested in business as related to the industrial courses distinctive of the land-grant type of institution.

Three Objectives
"This contemplates that the combination of secretarial science together with the service departments of economics, sociology and political science, enriched with a limited number of new courses to be developed by the college, will provide a curriculum leading to appropriate degrees and having the following principal objectives:

1. "Liberalize the curricula of the entire institution to meet the needs of modern citizenship training."
2. "Meet more adequately the

(Continued on page 2.)

Election Today Climaxes Week

Campus Politics Kept Clean for Full Week

Class Cards May Be Purchased; Needed as Requisite for Voting

Climaxing a week of rallies, T-shirts, street dances, rumors of write-ins and factions and in general clean—that it, up to last night at least—politics, approximately 4000 students will get a chance to vote today for new ASOSC officers.

The campus has been split wider apparently than ever before on the basis of the social groups, independent and fraternal. However, from most indications, partisan fervor of a week ago has been confined almost entirely to leaders, and the average student apparently will vote for whom he thinks is the better man regardless of affiliation.

For the first time, the ASOSC executive committee, following a constitutional amendment adopted last year, operated to keep the election free from politics. Two candidates were approved by the committee on the basis of previous experience and ability. These candidates are both independents.

In compliance with this plan, the Greeks did not offer a candidate for this position. The independents offered one, but he had previously been approved by the executive committee.

Class Dues Sale

Class cards may be purchased today for all classes, Ken Robinson, head of the election board, said last night. Constitutionally, any student may vote in class elections upon presentation of his class card which will be punched as he receives his ballot.

The candidates nominated at present for ASOSC officers are Dave Baum and Harold Nelson, president; Margaret Sherrard and Cal Schmidt, first vice president; Jeanne Sandidage and Arlene Ingersoll, second vice president; Del Chapman and Don Moyer, third vice president; Wanda Turner and Jeannette Sims, secretary; Don Hall and Bob Lindsay, Memorial Union president; and Phil Blunk and John Lynch, yell leader.

Candidates Listed

The candidates nominated for senior class officers are Harry Moss and Fred Boyer, president; Leona Leonard and Lorene Swanson, vice president; Mary Louise Armstrong and Marjorie Utterback, secretary; Harry McNeal and Dale Dustin, treasurer; and Wayne Thorne and Karl Klinkin.

John Charles Thomas Final Lyceum Artist

Italian, French Airs Comprise Program at 8 o'Clock Tonight

Presenting a versatile recital of Italian and French airs and a group of American folk songs, John Charles Thomas, baritone, will appear on the Oregon State campus at 8 o'clock tonight in the men's gymnasium. He will be accompanied by Carroll Hollister, pianist, who will also play several solos.

The program is as follows:

Once Again Dust Covers Hayloft

Cows and calves were very much upset Saturday night when the usually quiet dairy barn was suddenly swarmed by a pack of howling, rowdy cowboys, cowgirls, farmers and farmerettes—300 couples in all. From 8:15 to 11:15 o'clock, the loft of the barn was a cloud of dust, stirred up by dancers swinging to the rhythms of Bob Platner and his Aristocrats.

Two students who seemed to think that the warnings that dusk not wearing levis would be dunked in the horse trough were so much "hokey" discovered all too late—that such ideas were "all too wet" as well as themselves.

Yes, the Ag club barn dance is over for another year, and the cows don't seem to care at all. One more year should allow for a pretty good accumulation of dust.

Election Rules Announced By Executive Council

1. Election: Class and student body elections in the same room.
2. Place: Spanish ballroom—Memorial Union.
3. Time: Polls open from 9 a.m. to 12 noon, and from 12:45 p.m. to 6:30 p.m.
4. Enter from main ballroom through east entrance of Spanish ballroom.
5. a. Student body tickets will be punched when ballots are issued.
b. Class dues cards will be punched before class ballots are issued. (The official class dues card is required—receipts will not be honored.)
6. Ballots will be marked according to the Australian ballot system. (Place X before the name of the candidate desired.) Votes in the booths at the north end of the Spanish ballroom.
7. Be sure to deposit ballots in the proper boxes.
8. No electioneering will be permitted in the Spanish ballroom, in the Main ballroom, or within 50 feet of the polls.
9. Exit will be through the west end of the Spanish ballroom.
10. Each party will be permitted to check names of voters at the exit.

Baritone



John Charles Thomas, Metropolitan Opera singer, who entertains at the final lyceum program tonight.

New Candidates Enter Races For Positions

Letourneux Appears As 'Dark Horse' Write-in Nominee

A third political faction on the Oregon State campus will write in the names of two candidates for student offices at the elections this afternoon, according to rumors last night from many sources.

The new faction will apparently write in the names of Bob Letourneux, junior in secretarial science, as first vice president of the student body, and Art Peterson, junior in science, as president of the senior class.

Fourth Faction

A fourth faction also appeared last night and will apparently write in the name of Jeannette Sims for first vice-president, believing that with two Greeks up for this position, she would have a good chance of getting enough independent votes to win the election.

Faction leaders explained that neither candidate now up is, in their opinion, the best possible candidate for first vice-president, considering that this office may lead to president before the year is out. Reasons for the bombshell appearance of the new candidates were said to be grounded on the belief that although two strong parties are necessary in good student government, too frequently the best men are overlooked. Greek and Independent candidates, it was asserted, are often chosen on the strength of their political ties.

Non-Partisan Group

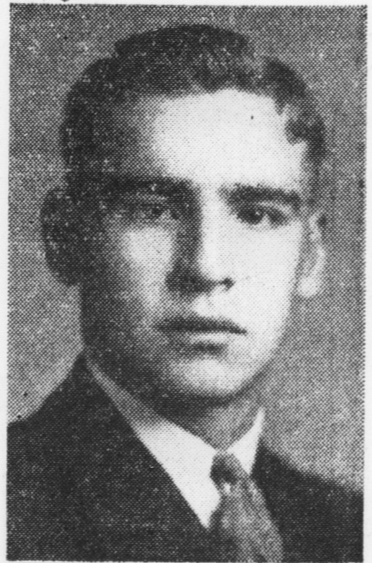
The new faction has announced that it is necessary for some non-partisan group to fill the gap left by the major political parties affording the average student a better chance to choose his student leaders from among the men considered to be the best available, not merely from two hand-picked candidates.

The new faction leaders have said that it is neither Greek nor Independent, that its membership is composed of men from both camps and that it is not an organized political party. The new movement, it was contended, does not seek to split party votes, but merely to offer students an opportunity to vote for men to come before them on the strength of their achievements rather than on the strength of their party affiliations.

Glee Club Sings

A popular program was given by the Glee club, directed by Prof. Paul Petri, director of music, and the Co-ed band led by Delbert Moore, conductor, Sunday afternoon at 3:30 in the museum building. Miss Norma Eiverson.

Yell Leader Nominees



Phil Blunt, right, and John Lynch, left, who were chosen by the executive council as candidates for yell leader.

'Dark Horse'



Bob Letourneux, junior in secretarial science, who has entered the political field as a candidate for ASOSC vice-president.

WAA Will Present Hale America Awards

Living Groups Vie For Athletic Plaque

The Women's Athletic association will award a plaque the last week of school to the women's living group which has the largest number of student hours in the "Hale America" program. Miss Jeanette Brauns, instructor in physical education for women, announced yesterday.

The student hours will be determined in proportion to the number of students in the living group.

Two hundred and fifty women have taken part in the program which has been in progress for four weeks, but more women may still register, Miss Brauns said. She added that although the registrants are not compelled to participate any specified number of hours, they are expected to take active part in the program.

Activities and instructors for the "Hale America" classes are listed on the bulletin board in the women's building. Classes are at 4 and 5 o'clock Monday to Friday, inclusive. Saturday hikes are planned which also contribute to student hours.

Each girl checks her attendance and activity for hours in which she has taken part on the attendance list posted in the dressing room.

Activities offered under this program which are not regularly offered include Danish exercises, gymnastic marching, tumbling and fancy roller skating.

Dean Maris to Speak At Girls' Conference

The twenty-ninth annual Oregon older girls' conference will be held at Pacific university in Forest Grove, May 15, 16 and 17, with Catherine Lyon, president, presiding. Miss Lyon will come from Fresno, Calif., for the conference.

Mrs. Buena M. Maris, dean of women, will be main speaker at the Saturday morning sessions and will lead the discussion following her talks. The conference will then be divided into smaller discussion groups under student and resource leaders.

The Pacific university choir will sing Friday night during the conference. The Wesley players of Wesley foundation at Oregon State will present "The Rock," by Mary Hamlin, in McCormick hall on the Pacific university campus, Saturday night.

Miss Sybil Tucker of the First Methodist church in Corvallis, is director for the conference. Further details may be obtained from her.

Presentations Will Feature Honors Convo

Committee to Choose 26 Award Recipients From Many Entries

Twenty-six honor and award presentations will be made in the convocation exercises today at 1 o'clock.

Talons, sophomore honorary for girls, will also announce their new members and pledges to Phi Kappa Phi, national all-school scholastic society, will be "tapped."

Prof. S. H. Peterson, head of the English department, and chairman of the honors and awards committee, will announce the winners, while President Gilfillan presents the awards. Other members on the committee are Mrs. Buena M. Maris, dean of women; Miss Gertrude McElfrish, English teacher; Tracy Johnson, assistant professor of journalism; and Dan Poling, assistant dean of men.

50 Winners

Out of 150 participants, committee members interviewed between 50 and 75 as possible winners.

The Clara H. Waldo prizes will award \$25, \$20, \$15 and \$10 respectively to the woman student of highest standing, in the senior, junior, sophomore and freshman year. The Lipman Wolfe prizes will award \$50, \$30 and \$20 respectively to the man or woman with the highest standing in the senior, junior and sophomore classes.

Chi Omega Prize

Chi Omega offers \$25 to the senior woman with an ideal of intellect and spirituality who has exerted the most wholesome influence upon her associates. The Lamplighter award of \$15 is presented to the senior who, in the opinion of the committee, has contributed most to the Lamplighter. The Lacey Athletic award is a medal given to the senior man outstanding in athletic participation.

Senior Award

The Druscilla Shepard Smith prize of \$25 is given to the senior woman having the highest scholastic standing during previous eight terms. The last award will be awarded a senior by the Corvallis Lodge No. 1413, Benevolent and Protective Order of Elks. This is the newest award to be given to the senior of next year, whose activities, leadership and citizenship have contributed most to Oregon State. In this award, the student's registration fee for his senior year will be paid, plus \$10 a month for eight months.

The E. D. Ressler Memorial award for juniors has been discontinued.

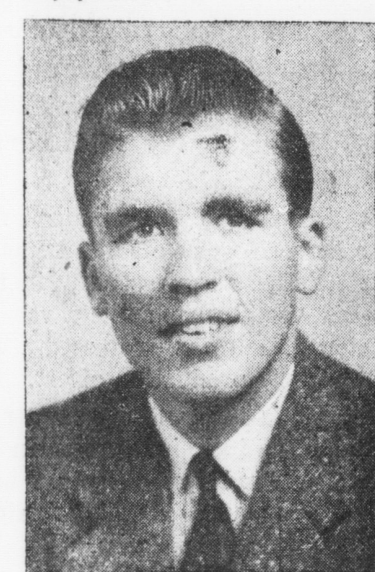
Courses Will Be Added To Summer School

Scientific German and German literature will be added to the courses indicated in the summer school bulletin. M. Ellwood Smith, dean of lower division and director of summer school revealed yesterday, Dr. Mary E. Lewis, associate professor of modern languages, will teach the courses which have been arranged to meet a demand by students.

Students will indicate their interest to Dr. Lewis or to the lower division office, said Dean Smith. If the demand materializes definite plans will be made. Evening classes will be arranged for entertainment workers.

"These courses are required of pre-med students in the science curriculum," said Dean Smith, "and if the student continues the work through two sessions, he will have the equivalent of a year of required German."

Appoints



Art Peterson, junior in science, who appointed Marguerite List as co-chairman of the annual junior bust.

Bust Co-Chairman Named by Partner

Marguerite List, junior in home economics, has been named co-chairman of the junior bust, Art Peterson, bust chairman, announced last night. The bust, annual let-your-hair-down party for juniors only, is slated for May 13 at Colorado Lake.

In keeping the bust close to Corvallis the committee is trying to cooperate with national defense and at the same time get all class members possible out to the affair, Peterson said. Colorado lake was the scene of the Barometer bust last year.

Registrations Near End For Military Ball Draft

By Del Crews

Details concerning the sell out of Military ball tickets and clarification of certain points of procedure were released last night by Elmer Ingle, ticket chairman and supply officer, in GHQ communique number 7.

Five hundred forty-two tickets had been sold by 6 o'clock Tuesday night and 414 of the girls registered were placed in 1-A classification. The remaining 128 were placed in 4-B, deferred classification, because of residence other than the OSC campus.

G-4 reports that 18 tickets will be available at the ticket office from 2 to 4 o'clock today or while they last, for members of the student body. If any tickets are returned to G-4 during the remainder of the week, they will be placed on sale and announced in the Barometer.

All ticket purchasers who failed to pick up their programs are

To Play



Woody Hite, orchestra leader who will play for the Military ball.

requested to obtain them at the ticket office at 2 o'clock today. Tickets and student body cards must be presented. Seniors of Seabard and Blade, including senior pledges, may also obtain their tickets and programs from 2 to 4 o'clock this afternoon.

In answer to many inquiries, the "fish bowl" is well guarded during the day and spends the nights in the local safe. It has been sealed in such a way as to prevent tampering. All ineligible ticket stubs are destroyed to prevent "stuffing."

Proper dress will be military uniforms with tan shirts for advanced military students. Juniors will wear Sam Browne belts. Civilian dress will be formal without flowers.

Ball tickets will serve as credentials for admittance and shall be kept during the evening both for the drawing and for admittance after intermission.

A supplementary communique, number 6, released last night by Bob Rau, morale officer, reported that Woody Hite's orchestra will play at the ball. Supplementing the orchestra's rhythm will be the two feature vocalists, Earl Whitney and Frances Block. Whitney is known as the "romantic baritone" whose specialty is ballads and Miss Block features both "jive" and "sweet" tunes.

Oregon State Barometer

Owned and published daily except Sunday and Monday during the college year by the Associated Students of Oregon State College. Entered as second class matter under Act of May 8, 1879, at the postoffice at Corvallis, Oregon.
 Regular subscription rates: \$3.00 per year or \$1.25 per term.
 News room, campus—209 Memorial Union building, office hours 9 a. m. to 5 p. m. After 7 o'clock, Gazette Times Publishing company, telephone 290.
 Business manager's office, 204 Memorial Union building, office hours 4 to 6 o'clock, telephone campus 95.

JOE ROSS Editor	JOEL KAHN Business Manager
BUSINESS STAFF	EDITORIAL STAFF
Assistant Manager: Betty Brainard	Editor: Mary Kollins
Advertising Staff: Dick Ross, Leon Ramsay, Pat Greenfield, Virginia Carl, Donna Denmour	Exchange Editors: Todd Hamilton and Joan Brewster
National Advertising: Virginia Carl	Feature Editor: Annis Bailey
	Editorial Board: Betty Anderson, Betty Graves, Glen Schaffner, Len Meyer, Heloise Lee, Connie Herzinger, Wanda Turner, Dick Blaw

STAFF FOR THIS ISSUE
 Night editor: Ralph Mohr; assistant, Lloyd Gibson.
 Day editor: Edna Holcomb; assistant, Jessie Durston.
 General staff: Pat Glenn, Donna Callavan, Joe Ross, Jack Bolter, Kay Goul.
 Office staff: Marian Carl, June Peterson, May Taylor, Pat Wells, Midge Domes.

Campus Bulletins

Hockey club will hold an important meeting at 4:40 today in the women's building. All members please attend.

Tickets for the dance recital scheduled for Friday and Saturday of Women's Weekend will go on sale today in the ticket office of the Memorial Union between two and four.

Thanes will usher at lyceum concert tonight. Be at the gymnasium at 6:45.

Varsity O club will meet at ATO house at 6:15 today.

Chaperone cards for weekend events are due in the office of the dean of women by noon today.

Cooperative houses who have not signed up for sugar rationing please see Mrs. Lorna C. Jessup today. Sororities and fraternities will be handled through the cooperative association.

Those planning to attend the Hooper's trip and Hawaiian dinner in Avery's park should sign by Thursday noon in the women's building, in Waldo, Snell or in main floor of library.

Seniors and graduate students in home economics should schedule a conference with the dean of their school. Sign for one on the bulletin board in the home economics office immediately.

Sophomore home economics students who are planning to teach home economics will meet in HE 122 today at 5 o'clock. It is important that everyone be present.

The rally committee will meet tonight at 7:30 o'clock in the ASOSC office.

Newman club picnic will be held Sunday afternoon at Avery's park. All those interested in going leave their name and 15 cents for refreshments at Newman hall Friday night.

Phi Sigma, biological honor society, will meet tonight in the Varsity O room of the MU at 7:30 o'clock.

Omicron Nu, important meeting of all members today at 5 o'clock in the Home Economic lounge.

OSC Granted Degree
 (Continued from page 1)
 needs of industry for young men and women trained in combined business and industrial courses.

3. "Provide an economical curriculum involving fundamental courses in business and technology, yet sufficiently liberal to train future civic and business leaders in fields related to the specific work assigned the state college under the unified system of higher education.

"These objectives do not contemplate duplication within the system in training for specialization in the social sciences or in the specialized fields of business administration.

"The board adopts the program leaving the details of courses, organization and administration to be worked out and submitted for approval at a later date."

Campaign Kept Clean
 (Continued from page 1)
 beard, sergeant-at-arms.

Junior class candidates are Lee Johnson and Jerry Herburger, president; Joy Hoerner and Ruth Blakely, vice president; Verna Hill and Bill Shinn, treasurer; Norma Long and Nancy Sonneland, secretary; and Lee Edwards and Gray Thompson, sergeant-at-arms.

Sophomore class nominee are John Larkin and George Dewey, president; Betty Saum and Beverly Gauntlett, vice president; Lorraine Wallace and Barbara Snow, secretary; Leroy Porter and John DeWitt, treasurer; and Wally Sterling and Marvin Wellman, sergeant-at-arms.

Election returns will be posted periodically on the bulletin board outside Memorial Union-106.

THIS 'N THAT

BY CONNIE HERZINGER
 "Accuracy and speed are the most essential qualities of an employee," said Mr. Walter Walgren, office manager of the Oregon Mutual Fire Insurance company at a speech to the office management class April 28. "Accuracy is first, and speed comes with experience, but never at the beginning of a new job."

Mr. Walgren delivered his lecture in an interesting and informal manner and enumerated the qualities an employer considers before hiring an employee.

1. The applicant should be physically fit. No employer cares to hire anyone who will be ill many days out of a year.

2. An applicant cannot have too much school training.

3. The employer investigates if any awards have been given to the applicant for speed and accuracy in typing or shorthand while in school.

4. The employer inquires about future intentions of the applicant—how long he plans on working, whether he is getting married shortly, or if he will enroll in school next fall. Considerable money is spent on training an employee, and the efforts are wasted if the applicant intends to work for a short time.

5. Personal appearance is of the utmost importance, and reveals to the employer the type of work the applicant will probably produce.

6. The employer is intensely interested in the applicant's family—whether they are radicals or unsocially adjusted—to determine what trouble the employee may make.

7. The employer not only interviews the applicant, but finds out from his friends and instructors his character, dependability, and capability.

Gibson Will Lead Ag Convention
 H. H. Gibson, professor of agricultural education, will give the opening address and lead the discussion at the Pacific Regional convention to be held at Cheyenne, Wyo., May 4-8. He will be in the agricultural education section on "Changes in the Emphasis on Objectives of Vocational Education in Agriculture to Meet the Present Situation."

Gibson is a member of the national committee on educational objectives in vocational agriculture. This committee, which is sponsored by the American Vocational Association, recently completed a bulletin on this subject which was published by the federal office of education.

Betas Throw Down Chimney Smoke Screen
 Smoke from a chimney fire at the Beta Theta Pi fraternity house swirled about the neighborhood of Ninth and Harrison streets around 2:30 o'clock Saturday afternoon.

Bernard Tallman, driver of the city fire department truck which answered the call, said that little, if any, damage had been done. The chief danger, he continued, lay in roof fires which might result from burning clinkers and sparks thrown from the chimney.



Tops!

That's what Oregon State students call our photographs.

Rightfully too, for the portraits we make are the utmost in style and finish besides being a true likeness. They are priced to meet a student's purse, too.

The Ball Studio
 PHONE 122
 Ball Building

For that MILITARY BALL — Buy — Wear

TUX or WHITE COAT

and ALL ACCESSORIES

at

NOBLE'S TOGGERY

Ball Building Cor. Third and Jefferson

EILER'S

YES----

we stay open until 10 o'clock evenings.



OREGON STATE MEN WILL BE INTERVIEWED AGAIN...

► Last year, on 39 different college campuses, men were asked for candid opinions about clothing styles. This poll, conducted by The Saturday Evening Post, is being repeated this year for more than reasons of fashion. It should have important usefulness in the national conservation of cloth and other materials.

Manufacturers and retailers want to know exactly what kind of clothing college men like best—what they find most practical. Government regulations about clothing make it vital to get such facts in advance.

Maybe you were one of the 4,179 college men who helped provide the information last year. Maybe you also saw the Post Portfolio of College Styles in your favorite store when you bought clothes last fall. It made buying simpler for a good many men.

The 2nd Annual Post Poll of College Styles will be made very soon through cooperation of the Oregon State College.

Results will again be available to you in leading stores this fall. When your local reporter asks you for information, your answers will be appreciated.

THE SATURDAY EVENING POST
POLL OF COLLEGE STYLE
 FOR 1942-43

Already Selected

What might be hailed as a clever publicity stunt will be the naming of a "Beaver First Selectee" at the Military ball Saturday night. Patterned after the national conscription lottery, "Draft" cards will be placed in the fishbowl and official drawing will then name the Oregon State co-ed who is selected.

Actually college women have already been drafted in the defense work effort. A survey questionnaire taken by state defense leaders early in the year indicated that the co-eds would spend their vacation at work in field and factory. Each has expressed a willingness to participate in the victory production effort.

Nor is this willingness a mere lip service to patriotic bandwagon techniques. Women in private life have not only been selected but they are serving in fields ordinarily limited to men. Discarding feminine wearing apparel for the more serviceable slacks, they have taken roles as service station attendants, lumber industry workers and agriculturalists. At Vancouver, Wash., an 18 year-old girl is managing a 70-acre farm and planting needed cereal crops. At the C. D. Johnson mill, Toledo, women have been put to work grading choice Douglas fir defense timbers. Even in Corvallis much of the delivery service is now being done by feminine workers.

Unquestionably, women have already been drafted. The naming of a "Beaver First Selectee" at the Military ball can be taken as just another publicity stunt or as recognition of service ahead for Oregon State co-eds when they join others in production roles this vacation.

Elections are riotous, but there is another angle of excitement on the campus this morning. It is convention time again for the Future Farmers of America. At 9:30 o'clock the first meeting will open. Representatives from high schools all over the state will be here and Donald Roland, from Independence, will preside.

This Oregon chapter of FFA has printed its name in capitals all over the nation for exceptional work. Last fall the national convention at Kansas City honored the boys with the gold emblem award as the most outstanding state body in the nation. The award will be on display during the four days of the meeting.

As the four-day program is carried out, KOAC will broadcast a cross-section of the activities. The boys will appear over the air first Wednesday night at 7:10 o'clock. At this time the executive committee will point out the requirements for various honors that will be awarded. Programs on Thursday will come at 12:50 and 7:15; Friday at 12:55 and 5:50, Saturday at 12:45 and 7:05.

Novelty programs and a hog calling contest, will be featured. An impromptu band will also play.

In the Mail...

To The Editor:
 This most humble observer has noticed a definite trend the past few years to make the musical talent on our campus exclusive. For instance, one taking private vocal lessons can sing at nothing but department of music functions. Of course, with the same breath, this observer must admit that the arts should never be lowered before the ears and eyes of the proletariat but must be shut off in a secluded room of the administration building where only the masters can appreciate the tremolos and the divine harmonies.

Admitting my ignorance of music, I still have a burden of a song, which is this: we would have no music department if it were not for the interest of the student body. The students make our music and believe me, they pay for their music, if not in tuition, in private lessons. For these fees and for their hours of work, all students taking private vocal lessons from our music department on the campus are forbidden (at the point of being "ousted" from the department) to sing in any other vocal group or solo away from the sheltering wing of our campus maestra. Of course this is logic, one pays a goodly fee to learn to sing and then one restricts one's singing to rare occasions when one's talent will be recognized and appreciated to the fullest, mayhap a Christmas program of carols or an Easter service of "The Seven Last Words," or perhaps, if a rare specimen of a voice is found sleeping in the sod, it may have a recital in May!

My final contention may be found in this, the chorus of my song: when a student at Oregon

State pays (and pays dearly) for vocal lessons from our music department, does that voice automatically become the property of the department? Is any student, who is interested in music, ignorant enough to misuse his vocal folds every time he sings away from the guiding hands of our music masters? Doesn't a person with a music talent have a responsibility to his church, to his friends and to his campus?

The majority of Oregon Staters doesn't profess to be budding Thomas's, or Crooks or Eddys, but we do profess to have a larynx and we like to use it just for the thrill of singing together and not for the almighty dollar. Admittedly we are the proletariat, but we have a voice and we don't like to be told when we can use it and when we can't—especially by an institution that we are supporting. We have been laboring under the impression that one learns to sing by SINGING.

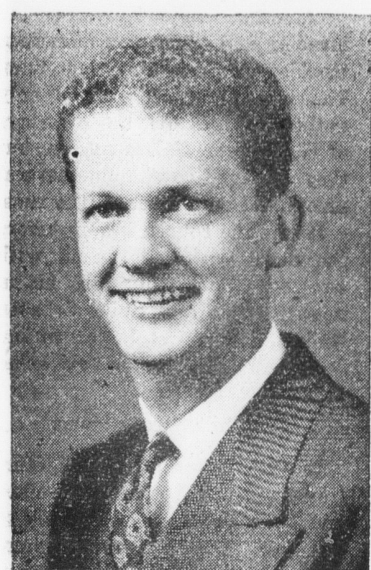
A quartet member who now belongs to a trio... A.V.B.

DEPARTMENT OF PUBLICATIONS
OREGON STATE COLLEGE
CORVALLIS, OREGON

VOTE TODAY

Victory's Best Will Meet the Test . . .

ASOSC OFFICERS



Dave Baum

FOR
PRESIDENT



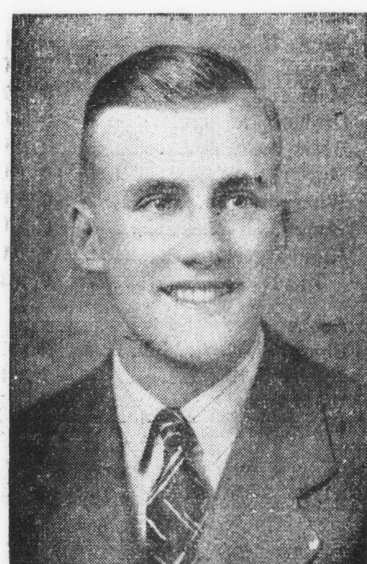
Wanda Turner

FOR
SECRETARY



Don Hall

FOR
M. U. PREXY



Cal Schmidt

FIRST VICE-PRESIDENT



Arlene Ingersoll

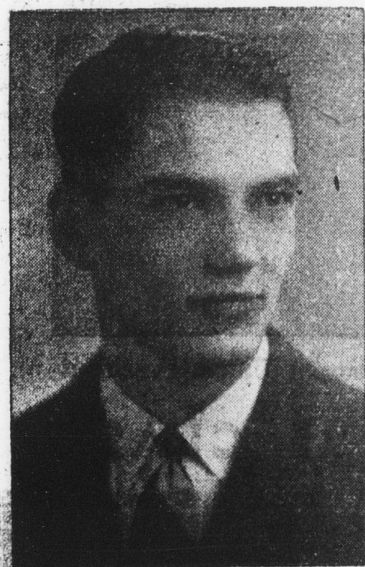
SECOND VICE-PRESIDENT



Don Moyer

THIRD VICE-PRESIDENT

SENIOR CLASS



HARRY MOSS
President



LEONA LEONARD
Vice-President

MARY L. ARMSTRONG—Secretary

DALE DUSTIN—Treasurer

KARL CLINKENBEARD—Sergeant-at-Arms

JUNIOR CLASS



JERRY HERBURGER
President



JOY HOERNER
Vice-President

NORMA LONG—Secretary

BILL SHINN—Treasurer

TOM CLARK—Sergeant-at-Arms

SOPHOMORE CLASS



GEORGE DEWEY
President



BETTY SAUM
Vice-President

BARBARA SNOW—Secretary

LEROY PORTER—Treasurer

MARVIN WELLMAN—Sergeant-at-Arms

Proven Leadership Through Experience

WE ALSO SUGGEST — PATRONIZE BAROMETER ADVERTISERS
VICTORY PARTY

Intrainural Sports Schedule

Tennis		Independents	
Wednesday, April 29, 1942		League A	
Phi Delta Theta vs. Delta Chi	Court 7 5:00	Kupono vs. Triangles	Field 4 5:00
Cauthorn vs. Alpha Gamma Rho	Court 8 5:00	Beaver Lodge vs. Heckarts	Field 5 5:00
Theta Chi vs. Delta Sigma Phi	Court 9 5:00		
Horseshoes		League B	
Wednesday, April 29, 1942		Thursday, April 30, 1942	
League B		League D	
Sigma Phi Epsilon vs. Lambda Chi Alpha	Court 1 5:00	Delta Tau Delta vs. Phi Delta Theta	Field 1 6:45
	Softball	Alpha Chi Rho vs. Sigma Pi	Field 2 6:45
		Weatherford vs. Beta Theta Pi	Field 3 6:45
Wednesday, April 29, 1942		League E	
(Time changes due to lyceum program.)		League C	
Sigma Alpha Epsilon vs. Pi Kappa Phi	Field 2 5:00	Sigma Phi Epsilon vs. Sigma Phi Sigma	Field 4 6:45
Hawley vs. Alpha Tau Omega	Field 3 5:00	Phi Sigma Kappa vs. Delta Chi	Field 5 6:45
		Buxton vs. Phi Gamma Delta	Field 6 6:45

Varsity Baseballers Play Idaho Today

Game Time Set at 4 P. M.; Elliott Probable Hurler

The cellar-dwelling University of Idaho Vandals today will be threatening the supremacy of Coach Ralph Coleman's Beavers when the two teams take the diamond at 4 o'clock this afternoon. Idaho, who has yet to win a conference game, is nevertheless termed "dangerous" by Coleman.

The Orangemen on the other hand are hungrily eyeing the northern division after having all three of its conference games this season. Beaver pitchers together with heads-up fielding have limited all opposition to one run in the three games. Glenn Elliott, stellar portsider and the

Fencing Club to Hike To Sulphur Springs

Members of the Fencing club will hike to Sulphur springs for a picnic Sunday, Miss Marjorie Dennis, instructor in physical education, announced last night.

Hikers will leave the women's building Sunday morning at 9:30 o'clock and travel to within three miles from Sulphur springs on bicycles or in cars. From this point the group will hike to the springs where it will cook its dinner out-of-doors. The group will return to Corvallis in the afternoon.

Committee heads for the picnic are Dorothea Harris, freshman in lower division, food and picnic arrangements; Wallace Eubanks, junior in forestry, transportation; Fred Young, instructor in English and Mrs. Young, hike leaders.

Members who plan to go should sign up in the office of the women's building so that arrangements for transportation can be made. Further announcements concerning the trip will be included in the campus bulletins, Miss Dennis said.

Picnic Slated Tuesday For Seabeck Students

Students interested in attending Seabeck, YMCA and YWCA summer camp on the Hoods canal in Washington, will have a picnic at Avery's park May 7, Connie Shupe, sophomore in home economics and co-chairman of Seabeck promotion

Beaver Rooks Beat Salem 5-0

Larson Hurls Win; Team Record Held

The Oregon State rook baseball team continued their winning streak at the expense of Salem high school here yesterday afternoon by shutting out the visitors 5 to 0. Swede Larson pitched six innings of no-hit no-run ball before he was relieved by Bob Scheble in the last frame.

Larson struck out seven of the invaders and never was in serious trouble, only walking one man. The rook sluggers could only gather six hits off the offerings of Higberger, Salem pitcher, but they managed to combine several errors and wild pitches into runs.

It was the fourth inning before the rooks gathered a run. With two out Bob Churchill hit a mighty triple and Spike Johnson walked. Johnson stole second and Jimmy Wagner singled home runs.

Churchill Steals Home

In the fifth inning Hall Martinson scored after he had walked and Dick Kohler hit a double to left field. The final two counters came in the sixth inning when Larson singled and when to third on an error of Churchill's fly ball. Larson scored after an out-field fly and Churchill stole home while the pitcher was winding up.

The Salermets' only hit came in the last inning when McMorris singled over first base. Dick Kohler turned in the fielding gem of the day with a brilliant shoe-string catch of Buttes' line drive in the fourth inning.

Salem	AB	R	H
Lang, lf	3	0	0
Lomb, c	3	0	0
McMorris, 3b	3	0	1
Graham, cf	3	0	0
Butte, ss	3	0	0
May, rf	2	0	0
Wittenore, 2b	2	0	0
Hough, 3b	2	0	0
Higberger, p	2	0	0
Total	23	0	1

Oregon	AB	R	H
Churchill, 3b	4	2	1
Johnson, 1b	2	1	0
Wagner, c	4	0	1
Frahler, rf	4	0	1

Martinson, ss	1	1	0
Michels, lf	2	0	0
Kohler, cf	2	0	0
Kruger, cf	3	0	1
Larson, p	3	0	1
Hawkins, 1b	0	0	0
Bower, 2b	0	0	0
Kuzman, lf	0	0	0
Total	25	5	6

Always Good Service
Electric Lunch

Classified Ads

LOST—Tan alligator rain coat in chemistry building. Phone 1175-W or return to M. U. desk.

LOST—Tan raincoat, in Education hall. Reward. Call 1092.

Cones & Cokes
Brownie's Shake Shack
"Freezer Fresh Ice Cream"

OREGON THEATRE

Last Time Tonight

SMASH!
Marlene DIETRICH
John WAYNE
Randolph SCOTT

THE SPOILERS
Margaret Lindsay
Harry Carey
Richard Sarrishness
William Farnum
George Cleveland

MAJESTIC
Wed., Thurs., Fri. & Sat.

A SPY RING!
A WEDDING RING!
...and two newly-met newlyweds are caught in a three-ring tornado of thrills and chills!

FLY BY NIGHT

starring
NANCY KELLY · RICHARD CARLSON
Albert Basserman · Martin Kosleck

—plus—
THE THREE MESQUITEERS
in
Gauche of Eldorado
with BOB STEELE · TOM TYLER · RUFUS DAVIS

WHITESIDE
CORVALLIS' FINEST THEATRE
Wed., Thurs., Fri. & Sat.

Perfect PLAYERS
...in the 4 STAR Best-Seller Story now becomes your TOP SCREEN TRIUMPH!...in

KINGS ROW

Starring
Ann SHERIDAN
Robert CUMMINGS
Ronald REAGAN

BETTY FIELD
CHARLES COBURN
CLAUDE RAINS
Judith ANDERSON

VOTE INDEPENDENTLY FOR CAMPUS UNITY

HAROLD NELSON



A.S.O.S.C. President

JEANNETTE SIMS



Secretary

MARGARET SHERRARD



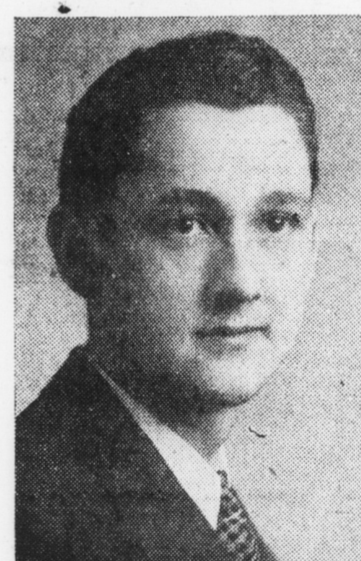
First Vice-President

JEANNE SANDIDGE



Second Vice-President

DEL CHAPMAN



Third Vice-President

BOB LINDSAY



Memorial Union President

SENIOR CLASS



FRED BOYER
President



LORENE SWANSON
Vice-President

Treasurer—WAYNE THORNE
Secretary—MARGORIE UTTERBACK
Sergeant-at-Arms—HARRY McNEIL

JUNIOR CLASS



LEE JOHNSON
President



RUTH BLAKELY
Vice-President

Treasurer—VERN HILL
Secretary—NAN SONNELAND

SOPHOMORE CLASS



JOHN LARKIN
President



BEVERLY GAUNTLETT
Vice-President

Treasurer—JOHN DEWITT
Secretary—LORRAINE WALLACE
Sergeant-at-Arms—WALLY STERLING

VOTE TODAY!

It Is a Privilege and a Duty

Vol. XI
Awa To 1 In C
82 For 29
Twent honor av tapped cation s were pro Peterson partmen committe and Geo chemical the Phi
Betty in pharr Clara H. able mer Schrepel nomics, ton, fres
Clara J. Doroth secretari sophomora Honorary Carmody tion, and in secret
Clara J. was rec Armstrong nomics, were Jea economic junior in
The so prize wa home ec mentions senior if Adele Kri nomics. I he presen she was high scho
The L award we or in agr tions we for in sec Lundeen, gineering Lipma
The ju went to J secretaria Schaeffer John Wil cering, a in forestr tions.
Mary J. home ec sophomora and honor Teutsch, vision any in chemi Mary J. secretaria Lampligh Kay Se ol science Omega pr Locy Clayton S ing in the Gilbert trical eng teuffer, s ceived the Di prize we senior in s Don D (Con
Elo
Se
Harry Mc Fred Boye Art Pertor
Leona Le Loren Sw
Mary Lou Marjorie U
Dale Dust Harry Mc
Se
Karl Klinc Wayne Th