

CORVALLIS AREA FORECAST:  
Rain early today turning to  
showers by afternoon. A few  
showers tonight and Friday. High  
in the low 50s today, close to 50  
Friday. Low in the upper 30s.  
Wind southerly 10-20 mph.

the daily  
**Barometer** Thursday

OREGON STATE UNIVERSITY, CORVALLIS, OREGON

VOL. LXXXVIII NO. 97

February 23, 1989



JANET L. MATHEWS/The Daily Barometer

### Asbestos Entrapment

Mike Garrett, asbestos removal supervisor, cuts part of the 4800 square feet of plastic that is used to encase about 70 feet of hallway in Snell Hall's basement. Once the hallway is encased and the asbestos is removed, the plastic is discarded. Asbestos removal at OSU began about 3 years ago and there is a "long time" yet to go, according to Garrett's supervisor Will Crawford.

## Women's History Week to feature authors, historians

By DARLA YOUNG  
for the Barometer

Celebrating women's history and honoring women locally and around the state is the goal of Women's History Week, set to run Feb. 27 through March 3 and sponsored by the Women's Center.

March is National Women's History Month, "but here on the OSU campus we only celebrate one week, because OSU students are busy during dead week, finals week and spring break," said Patty Layman, clerical assistant at the Women's Center.

*"Many people don't realize that women did more than just sew the flag for the men to carry."*

—Patty Layman

"Women's history is an important factor in our past, because men wrote the history book and got the credit for our history. Many people don't realize that women did more than just sew the flag for the men to carry," she said.

The National Women's History Program believes that "women's history has to be rewritten to put women back into history."

All activities for the upcoming week will be held at the Women's Center at no charge and are open to the public.

Monday's activities include a speech and slide show at noon about Abigail Scott Duniway, who promoted women's suffrage in Oregon during the 19th century. It will be presented by Kay Sweetland Bower, a former Women's Center director.

At 1 p.m. a potluck is scheduled, and from 3 to 4 p.m. Loretta Harrison, assistant director of Horner Museum, will lead a discussion about "the Victorian woman as ornament."

Tuesday's activities begin at 11:30 a.m. with a program led by Kathryn Olson, assistant professor in music and director of choral activities, on women in music. At 1:30 p.m., Nancy Bryant, assistant professor of apparel, interiors and merchandising, will present wearable art for women.

At 3 p.m. the "Rosie the Riveter" video will be shown, which is about women's employment during World War II.

On Wednesday, Sunny McHale Skydancer, a local songwriter and musician, will provide entertainment and music beginning at 11:30 a.m.

The fourth annual Women of Achievement Awards ceremony and reception runs from noon-2 p.m. and from 2-3 p.m. Jean Fuller Anderson, vice president of Unison Publishing, Inc., will speak on women in publishing.

"American Women and Their Quilts" will be the subject Thursday at noon by Judy Juntunen, assistant director and librarian at Benton County Historical Museum. From 1-2 p.m., a video will be shown on how women in the 19th century found their voices through quilting. Arlene Kerrigan, visiting assistant professor of art, will give a presentation of women in art from 3-4 p.m.

Friday at 11:30 a.m., Ann Warren Smith, author of two books for young adults as well as short stories and articles for children and adults, will speak about "Any Woman Who Writes is a Survivor." At 12:30 p.m., Elizabeth Campbell, assistant professor of English, will talk about the crucial role women played in Victorian fiction and novels in the 19th century.

Ending the week Friday night at 7 p.m., Peg Elliot Mayo, counselor, writer and storyteller, will read a story from "Tales Of An Irish Grandmother."

*"The Women's Center is still one of the best-kept secrets on campus...."*

—Layman

The Women's Center offers many services for men and women, students and non-students alike. Services include information and referral, scholarship information, programs, job books, counseling, a library, meeting rooms, support groups, typewriters and a lounge. Office hours are 8 a.m.-5 p.m. Monday through Friday.

"The Women's Center is still one of the best-kept secrets here on campus, and we're trying to change that image. We've been here for over 15 years and many people don't know we're here," Layman said.

The Women's Center receives most of its women's history information, posters and pins from the National Women's History Project in Santa Rosa, Calif.

## OSU's recreational sports program celebrating 25 years

By MICHAEL RASH  
of the Barometer

Recreational sports clubs at OSU are celebrating their 25th anniversary by displaying photos and information in the front lobby of Dixon Recreation Center on Saturday from 11:30 a.m. to 2:30 p.m.

According to Tom Kirch, director of recreational sports, the program began in the fall of 1963 with five sports clubs. The latest additions are the horse polo and triathlon clubs, which were added last year, and the squash club, which was added in the fall. Currently, there are 23 clubs with more than 700 students, faculty and alumni actively participating in the program at OSU.

It will be a "pretty good" opportunity for the sports clubs to

answer questions, recruit members and just make themselves known on Saturday, Kirch said. Some clubs will be displaying old photos from the yearbook and the *Daily Barometer* to show how the clubs have changed over the years.

"The displays will be set up in a high traffic area of Dixon," Kirch said. "There should be a large amount of people going through that area because of Dad's Weekend."

According to Ken Cheung, sports club coordinator, not all of the clubs will be able to participate. The ski team will be away for the entire weekend at a regional meet in Utah, and the pistol team has a match on Saturday.

"There hasn't been too much of a change in the program as a whole," Kirch said. "We often find that team sports like soccer get more backing from faculty and alumni than the individual sports like fencing. They seem to go through the biggest changes

as far as growth in members."

Kirch explained that some clubs, such as the tennis club, have grown considerably in the last few years. And others, like the rugby club, have become popular rather quickly.

Becoming a sports club, according to Cheung, is "not automatic." It must be recognized as a student club before it can be approved by the sports committee, which consists of both students and faculty. Then applications and a schedule of contests must be given to the Student Activities Center.

According to Kirch, all of the sports clubs must be competitive or teach others how to compete in some way. Some teams may go through changes, such as lack of funding or interest, that would eliminate them. Others, like soccer, may become popular and grow into an intercollegiate sport. And still others fluctuate between the two.



### Kakegawa visits OSU

Juichi Shinmura (second from right), mayor of Kakegawa, Japan, visited OSU for the first time Wednesday. Roger Fendall, professor of crop science, Jun Tanaka, a senior in crop science from Kakegawa, and Don Kloft, senior in crop science, discuss the itinerary with Shinmura for the Crop Science Club's trip to Kakegawa during spring break. Yoshio Muramatsu, (far right) interprets.

JANET L. MATHEWS/The Daily Barometer

## Trio Day observed at OSU yesterday

By GERALD VAN ZANDT  
of the Barometer

Four years ago, Congress designated the last Saturday in February as National Trio Day. In observance of this designation, a celebration was held Wednesday by the Special Services Project, which along with the Upward Bound Program, are the two programs at OSU associated with the Trio program.

Guests were invited from various OSU departments and the offices of Oregon senators Mark Hatfield and Bob Packwood. Refreshments and a large cake were served to guests attending the event.

Trio is a set of U.S. Department of Education programs that includes Upward Bound, the Special Services Project, Talent Search, and Educational Opportunity Centers.

Although only Upward Bound and the Special Services Project are currently at OSU, these programs serve almost 700 students, and the Special Services Project alone has graduated 133 students since its inception here in 1980.

Special Services is a program that provides academic support for college students and has three eligibility requirements. However, a student doesn't have to meet all these to be eligible for acceptance into the program.

The student must be low income, be a first-generation student (meaning that neither parent has a four-year college degree), or have a physical handicap.

OSU President John Byrne proclaimed Saturday, Feb. 25, as Trio Day on the OSU campus, but was unable to attend Wednesday's celebration due to being called out of town unexpectedly.

Lita Verts, director of the Special Services Project, said "Dr. Byrne has been a big supporter of ours, and he's been very helpful to us."

The Special Services Project assigns counselors and advisers to students, makes class tutoring available, will have 12 computers available for its students by the beginning of spring term, provides alternative testing for students with special needs, administers a series of placement tests when the student first enters the program, and monitors the progress of students.

OSU Vice President for Student Affairs JoAnne Trow was in attendance, and said, "This celebration is an opportunity to recognize the work that the Trio program has done at OSU. This program gives them (students) a chance to succeed in college."

"Not everyone knows that we are on campus, even though we've been here over eight years," Verts said. "A lot of people on campus have been very supportive of us."

## FBI agent to speak in MU today

Norman Mollerup, an agent with the Federal Bureau of Investigation's Portland office, will speak today on the "FBI's Role in Society." The address will be at 10 a.m. in MU room 105, after which there will be a question and answer session.

The event is being sponsored by the ASOSU National Affairs Task Force. According to ASOSU NATF Director Mark Duncan, Mollerup was chosen as a speaker because "the FBI is a misunderstood agency, and we wanted to have him speak on how they function in society. We (the NATF) think that this will be an extremely educational event."

*"The FBI is a misunderstood agency...."*

—Mark Duncan

Duncan also said, "I don't think Mollerup will be recruiting, although I'm sure he could point those interested in the right direction."



**ASOSU  
WANTS YOU!**

**BE THERE!**

TUES., FEBRUARY 28 • 7:00pm • MU Conference Room

### CANDIDATES INFORMATION MEETING

February 28

If you are interested in running for...

- ★ ASOSU President
- ★ ASOSU Vice President of Senate
- ★ ASOSU Vice President of Committees
- ★ ASOSU Vice President of Finance
- ★ ASOSU Senator
- ★ Student Fees Committee Members
  - (4) 1-year positions
  - (1) 2-year positions
- ★ GPSA President
- ★ GPSA Vice President
- ★ GPSA Secretary/Treasurer
- ★ GPSA Senator
- ★ Senior Class President

## Prep reps to meet at OSU

By CHRISTY WILKENS  
of the Barometer

Nearly 70 high schools in Oregon will be represented on March 6 when OSU hosts its 38th annual Principal-Counselor Interview Day in the Memorial Union.

Kay Conrad, director of admissions, said the conference is designed to update participants on programs and services available at OSU, and assist in preparing students for college. It will provide information about career opportunities, internships, graduate programs and salary figures.

This year, Conrad expects between 120 to 150 people from around the area to attend the conference.

She said that the two main objectives of the conference are to try to inform the schools of any information they might need, and to give them a chance to visit with former students.

"Positive feedback is encouraging to the schools," Conrad said.

After the general session, the format becomes a mini-conference.

From 9:30 a.m.-noon there will be four, half-hour sessions featuring four simultaneous presentations from which the participants can choose.

choose.

Following lunch, principals and counselors will have an opportunity to speak with former students who are now attending OSU. Conrad said freshman and sophomore students who have been attending OSU since leaving high school will be individually notified of the schedule.

"I would encourage ... many students of OSU to turn out," Conrad said. She said the day should be interesting, helpful and enjoyable.

"We also want to find out the concerns of the prospective students who are thinking about attending OSU," she said.

Michelle DeVoe, a junior in science, remembers the program from her freshman year.

"I think it really helps," DeVoe said. "I told my counselor that the school ought to have a better computer program, so that graduating students can be prepared for college classes."

The cost of the conference is \$5, which includes refreshments, lunch and all materials handed out. High schools will be notified via mail.

Optional campus tours will be available from 9:30 a.m. to 10:40 p.m. and from 10:55 a.m.-noon.

## Classifieds Get Results

# ASOSU looking to change constitution

By CATHRYN STEPHENS  
of the Barometer

Two open hearings held earlier this week brought out concerns about changes under consideration to the ASOSU constitution.

An ASOSU committee is reviewing and revising the current ASOSU constitution. The open hearings, held Feb. 21 and 22, were to gain information about the opinions of individuals and groups on campus concerning the constitution.

Several groups were represented at the hearings, including the ASOSU Judicial Board and the Graduate and Professional Student Association.

One major change Leanne Bradshaw, assistant to the president, presented was to require presidential and vice presidential candidates to run on a ticket in elections.

Several people attending the hearing voiced their opposition to the change, stating that this would not give diverse representation to the ASOSU executive board, which acts as a check system. Others felt that this would not be a fair way of choosing the two top positions because some students may only want to vote for one person in the ticket.

Another change Bradshaw suggested was to move ASOSU elections to winter term, replacing current spring-term polling. Bradshaw said the main advantage in doing this would be to

give the new ASOSU group a chance to become oriented in their jobs before they actually take office. This would also allow more time for the president to choose cabinet members, she said.

The ASOSU Judicial Board is recommending changes that would take away some of the powers of the ASOSU president. Instead of appointments made by the president for the executive board, the Judicial Board recommends that all five officers be elected to office. The reasoning is that this would prevent a president from abusing appointment powers — for example if a president appointed only people in his or her own private living group.

The Judicial Board also recommended that the president should not have the power to appoint the Judicial Board, saying this was a conflict of interest.

Bradshaw also suggested that the size of the senate be changed from one senator for every 750 students in a school to one for every 700. She also suggested that three other organizations be added to the list of groups who have a non-roll call voting membership. Her suggestions include the Educational Opportunities Program, the Disabled Student Organization, and the Older than Average "Chrysalis Society."

The ASOSU constitution committee will take into consideration the suggestions presented during the hearings and the revised constitution is expected to go into effect next winter term.

"We're looking for growth," Bradshaw said.

# Home Ec gets \$3 million donation

By OSU Department of Information

A retired General Mills vice president has given the OSU College of Home Economics a combination of cash, stock and other securities in a donation that will exceed \$3 million in total value, according to Kinsey B. Green, dean of the college.

Mercedes A. Bates, a 1936 OSU graduate and native of Portland who lives in Minneapolis, Minn., retired in 1984 from her position with General Mills as vice president and director of the Betty Crocker Food and Nutrition Center.

The donation is the largest one-time contribution ever made to the university, according to John Irving, executive secretary of the OSU Foundation.

The gift will be used in part to construct the \$2.5 million Family Study Center that has been the centerpiece of the College of Home Economics' Centennial Campaign in 1988-89, Green said.

"As a result of her generosity, the Family Study Center will be named in her honor," Green said. Contributions and pledges toward construction of the center had already reached about \$1 million. Although all of Bates' gift won't be designated for the center, "its magnitude assures the center's reality," said Green.

Bates formally presented the gift to OSU Tuesday at a luncheon with university and college administrators, faculty and students. Officials presented her with a full-color rendering of the Family Study Center.

The donation in part recognizes the "sound home economics background I got that allowed me to go in a number of ways professionally," Bates said. A home economist in business was almost unheard of in those days, she said, but her training led her in a varied career.

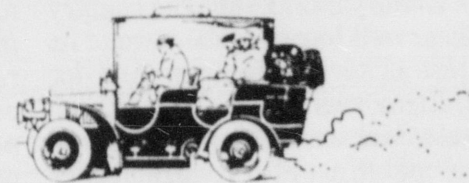
She began work at the Southern California Gas Company and became supervisor of home service. She moved to Globe Mills food company and then opened her own business in Hollywood as an advertising food consultant. She learned the art of appetizing food presentation for black and white print and television ads, which eventually resulted in a her own television show. After a stint as food editor for McCall's, she joined General Mills in 1964 as director of the Betty Crocker Kitchens. She was elected a vice president of General Mills in 1966, the first woman officer in that corporation's history and one of the first in the food industry.

At General Mills, she directed a staff of specialists engaged in the work of the Betty Crocker food services, nutrition, publications and publicity, consumer response and microwave activities.

OSU has honored her with both its Distinguished Alumni Award and Distinguished Service Award. She also won the Hope Chamberlin Award from the journalism department for outstanding achievements in home economics communication and was the first Distinguished Alumnus of the Home Economics Alumni Association.

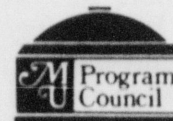
Bates was president of the American Home Economics Association and was also on the board of the Minnesota Gas Company.

# Looking for cheap entertainment for Dad this Weekend?



Dads' Weekend now has 2 car shows for you and your Dad to enjoy. The Classic Car Show in the McAlexander Fieldhouse and the Sports and Luxury Car Show at the MU Quad. Both shows begin at 10 am and end at 4 pm.

Sponsored By:



## Little Caesars Pizza

1571 NW 9th (across from Nendels) 752-3671

### DADS' WEEKEND SPECIAL

Good Friday, Feb. 24th thru Sunday, Feb. 26th

**2 Large Pizzas**  
with cheese and 2 toppings

**\$11.99** (No coupon needed for this special)

Why wait for delivery when it takes only 15 minutes to pick up two great pizzas for one low price.

**COUPON**  
**CRAZY BREAD 99¢**  
-Limit 4 orders  
-Good only at Corvallis store  
-Expires Sunday, Feb. 26th  
reg. \$1.25  
Little Caesars Pizza OSU 1

American Cancer Society  
**CANCER CAN BE BEAT**  
Almost 2 million people are living proof your contributions count.

## M & M Mobil Mart

**Coors & Coors Light Suitcase**  
12 ounce cans  
**\$8.99** plus deposit



**Heidelberg Half Case**  
**\$3.29** plus deposit

**Old Milwaukee Half Case**  
12 ounce cans  
**\$3.29** plus deposit



**Schlitz Premium Suitcase**  
12 ounce cans  
**\$5.99** plus deposit



Hwy 20 (1/4 mile North of Golf City) 757-0985



## DADS' WEEKEND

### 5K FUN RUN

Saturday, Feb. 25th 9:30 a.m.  
(Check-in starts at 8:45 a.m.)

The Start and Finish Line is in the Memorial Union Quad on the OSU Campus

\*Everyone who enters will receive a commemorative 100% Cotton T-Shirt

\*Cost is \$8.00 if you register before Feb. 25th,  
\$9.00 if you register the day of the run

\*Register at MU East in the S.A.C.

# EDITORIAL

## Racist's election can't spoil the dream

Black Americans have been thinking a lot lately about the past and the future — the memory and the dream.

The birthdays of Martin Luther King, Jr., and Frederick Douglass fit neatly into February's designation as Black History Month, and the country has done well to remember two of its greatest historical figures. And for most, memories of the strides taken by Jesse Jackson in the last presidential campaign are still vivid, and offer a harbinger of better times and still more social, political and economic advancement. If the dream of equality has yet to be realized, it's at least a little bit more vivid, and a tad closer to reality.

But now, as if to dredge a bad memory up from the past to spoil such a positive month for blacks, a former Ku Klux Klan leader has been elected to Louisiana's House of Representatives.

David Duke this week took his place in the Baton Rouge state house, ending a highly-publicized and bitter struggle to keep a white supremacist out of office. That battle included appeals by George Bush, Ronald Reagan and Republican National Committee chair Lee Atwater on behalf of Duke's opponent. Atwater

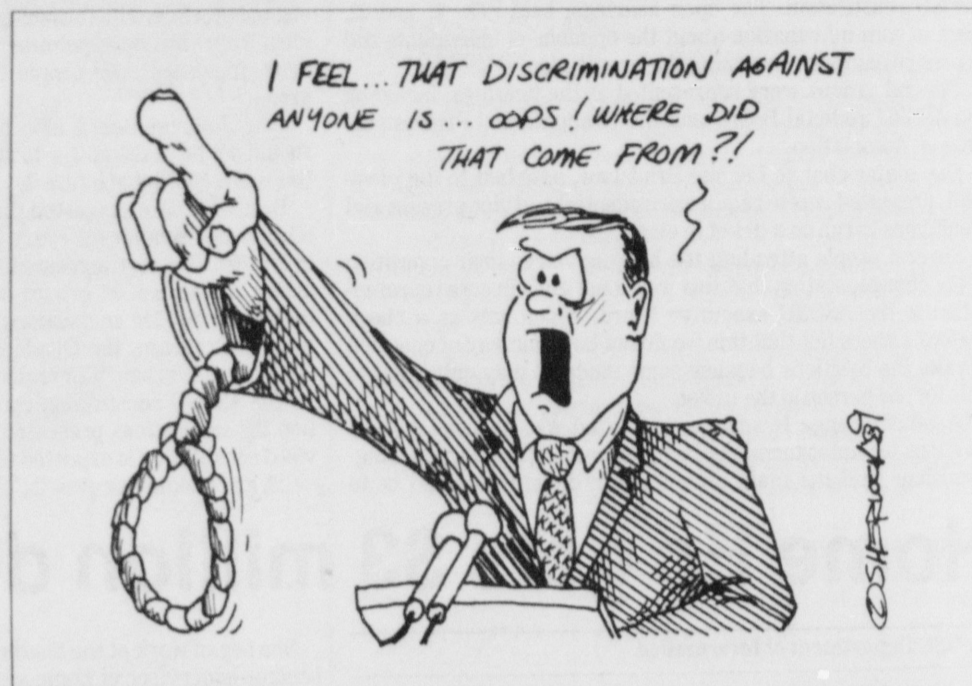
went so far as to say that Duke "is not a Republican" as far as he was concerned.

Bush and Reagan's opposition to the Duke candidacy wasn't the boldest political stand ever taken. After eight years of assailing Affirmative Action and appointing overt racists to speech writing and advising posts in Washington, the pair's opposition to Duke seems almost unbelievably cynical.

But they at least tried, as did a lot of others who find racism offensive and intolerable. And David Duke still made it into office.

Pragmatically, as Gov. Buddy Roemer observed, Duke will be only one voice in the legislative assembly, and his actions will be closely watched by the media and his peers in the House. Any attempts to institute overtly Klan-inspired policies are most certainly out of the question.

But on an ideal level, we must surely be disheartened by the fact that a former Klan leader could actually garner enough support to win elected office. The fact that Duke has officially shed his Klan ties and offered a number of platitudes about "equality" notwithstanding, he remains head of the National Association



tion of the Advancement of White People. Minds don't change overnight, and it's certain that Duke retains every one of the beliefs that made the Klan and the white supremacy movement attractive to him in the first place.

Shouldn't memories of the KKK's long history of racial violence and hatred have been enough to keep Duke out of office? What does his election say for the state of the

dream?

Even in Black History Month 1989, action and reaction walk in pairs — Jesse Jackson's success, juxtaposed by the election of white supremacist David Duke to the Louisiana House, proves that. But dreams, like memories, lie beyond people's efforts to change them. The petty triumphs of racists like David Duke can never keep black Americans from holding onto theirs. (DC)

## Labels damn women if they do, if they don't

By CYNTHIA HOLLAND  
of the Barometer

Apart from the overt sexism women are faced with in society, they often find themselves victim to more subtle but equally degrading treatment by the English language and the way it is used. Words and labels used to refer to women are either implicitly or blatantly degrading to women and can create an almost insurmountable rift between the genders.

Approximately 200 names or references for women can be found in the language, compared to only 20 words used to describe men. The majority of these labels place women into unrealistic categories and make it virtually impossible to escape having a defamatory label placed upon them, regardless of what activities the women are involved in.

For example, if a woman shows assertiveness or confidence in a business or professional relationship, she may be called an "ice maiden" or a "bitch." A man with the same characteristics, however, will be respected for his aggressiveness and competence in the business arena.

Many of the words used to describe the two genders are centered around their perceived sexuality. Men are told it is acceptable to be promiscuous and pursue sexual encounters. To many men, having sex with a woman is a "conquest," and society reinforces — as well as promotes — this idea by calling sexually active men "studs" or "playboys."

In contrast, society still expects women to remain virginal and "pure" until marriage. If she fails to do so, she often is given a reputation for being "easy," "loose" or a "slut." But if she escapes these derogatory labels, she may still face disapproval for being "without morals" and is anything but a "lady."

The structure of the language gives women the conflicting expectations of society, making it nearly impossible for them to avoid being placed into erroneous stereotypes.

For example, most women are told at an early age that sex is supposed to be for a man's pleasure and they should do anything they can to make the act more enjoyable for him. A woman is generally conditioned to believe that it is improper to show the slightest interest in sexual behavior, lest she be branded a

"nymphomaniac" or "whore." However, when she follows society's mores and decides to wait until her marital bed to have sex, she risks being called "frigid" and "passionless."

Regardless of the moral implications of the sexual hypocrisy between the genders, the fact remains that women are expected to be submissive to their partners — and men are to be the in-

### The Opposite Sex

itiators. The way the sex is described further illustrates this point. For example, some men may describe a sexual encounter as "screwing," "laying" or "making love to" their partners. All of these terms put the man in the position of power and the woman in submission.

Although the phrase "making love to a woman" may appear to be a statement of affection and mutual consent, a much more appropriate and less sexually biased description is "making love with a woman." Both descriptions have the same connotations, but the latter suggests that the woman is an equal partner in the act.

Another way women are treated differently by the language is in marital relationships, treatment with which men are unfamiliar. As soon as a woman gets married, she is traditionally expected to give up a part of her identity and assume her husband's last name. But this is not a requirement for the new husband.

In the name of love and commitment, women are told to cast their birth names aside; Miss Jane Smith becomes Mrs. Jane Jones, or whatever her husband's name happens to be.

This archaic custom dates back to the patriarchal tradition which defined women as possessions or property of their

husbands. Although these titles are not as overtly degrading as some of the slang used to describe women, they still create a less than equal atmosphere between the genders.

Moreover, it is unfair because as more women are waiting until they establish their careers before getting married, many find it more practical to keep the name with which they built their careers upon.

One way to fix the marriage title problem is to recognize that it is a woman's individual decision on whether or not to take her husband's name, and she should not be challenged by society. Today, there are several options available, including hyphenating a woman's maiden and husband's name, or using her maiden name as her middle name and using her married name as her last. One new option is for the couple to both change their last names.

But even after this decision is made, a woman still must decide what title she wants to use after getting married. While men are referred to as "Mr." — a label which does not change within their lifetime — women are often identified according to marital status. If a woman is unmarried, she can be called either "Miss." or "Ms." After marriage, a woman can be called "Mrs."

But either way, her role in society is constantly being defined according to her relationship with a man. Many women today are moving toward the use of "Ms.," the female equivalent of "Mr.," which would identify them as independent people whose marital status is secondary.

Unfortunately, answers to other examples of inequitable treatment via language aren't that simple. Identifying gender-based slurs for what they are and challenging people who use them is the only way to eradicate them from the language. Users of English have recognized the word "nigger" for the hateful term that it is, and while its use persists, it is certainly not acceptable and is not tolerated.

Likewise, only through examining and challenging the dialectic of female degradation can the sexism of language be ended.

LE

Let Go

To the edito  
I loved t  
Verses. It's  
book may n  
artistic ma  
We as pe  
material in  
faith. But v  
every time  
and remove  
people are  
what is per  
him, let Go  
deny the m  
Ayatolla  
book; and  
then denou  
"I refuse  
manipulat  
Percy Moo  
Junior in C

If I'm a

To the edito  
In Tuesd  
all forms o  
alike for be  
arguments  
them fast  
narrow, ev  
veiled ficti  
of child mo  
Crist's par  
the Barom  
Moslem is  
or she high  
to be. I d  
However,  
who write  
not pleased  
test, and t  
their client  
want to ca  
for making  
and views

wou  
oper

- M
- D
- N
- A
- N
- C
- W
- F
- R
- S
- S
- A
- P

Thos  
appl  
Deac

# LETTERS

## Let God be executioner

To the editor:

I loved the editorial on Salmon Rushdie's book *The Satanic Verses*. It's a shame the author of such a thought-provoking book may not even live long enough to receive the fruits of his artistic material.

We as people must take a stand! I understand some of the material in the book undeniably offends members of the Moslem faith. But what about us poor lost souls searching for truths? If every time a sect of people disagree with "offensive material," and remove the material from the bookshelves; we as thinking people are too removed from what is deemed as the truth and what is perceived as truths. So, if God thinks Rushdie offended him, let God be his executioner — not man. We have no right to deny the mind from flourishing in thought.

Ayatollah Khomeini should allow Rushdie to promote his book; and if his material by its substance is not withstanding, then denounce the book with the truth rather than the sword.

"I refuse to understand man — for with understanding comes manipulation in its wisest form."

Percy Moorman

Junior in Communication

## If I'm a censor, he's a hypocrite

To the editor:

In Tuesday's *Barometer*, Doug Crist righteously denounced all forms of censorship. He condemned Christians and Moslems alike for being narrow-minded, self-appointed moral agents. His arguments sounded real high-minded and correct (if you read them fast), but I believe that Crist's viewpoint is in itself narrow, even simplistic. For instance, if someone wrote a thinly veiled fictitious novel portraying your Mom and Dad as a couple of child molesters, would you not protest? If the novel was about Crist's parents, would you expect to see excerpts appearing in the *Barometer*? In the same way, a Christian (like myself) or a Moslem is highly offended when someone portrays someone he or she highly regards as something less than they believe them to be. I don't agree with violent protests or death threats. However, I do believe it's proper to protest and let the people, who write such novels or make such movies, know that you are not pleased. It is also proper and fair to boycott as an act of protest, and to forewarn vendors that if they feel it proper to offend their clientele that there may be a loss of business. Crist may want to call me "bigot, fundamentalist, fanatic, censor, etc..." for making such comments. After reading the one-sided news and views of the *Barometer*, I believe that Crist, if put in a simi-

lar situation, would meet or exceed some of the censorship he so condemns. So if Crist wants to call me a censor, fine, but don't be surprised if someone calls him a hypocrite.

E. George Robison

Research Assistant in Forest Engineering

## Letters Policy

The *Daily Barometer* welcomes letters to the editor.

Letters must be typed, double-spaced and, generally, 150 words or less. All letters will be considered for publication. However, due to the limited space available, brevity is encouraged.

Letters from students must include the author's signature, telephone number, academic major and class standing.

Letters from faculty members, administrators and classified employees must include the author's signature, job title, department name, and telephone number.

Letters submitted by members of the community must include the author's signature, address and telephone number.

## Op-Ed policy

The *Daily Barometer* staff welcomes submissions too lengthy for the Letters column, referred to as Op-Eds.

Op-Eds must be typed, double-spaced and, two-three pages in length. All Op-Eds will be considered for publication. However, due to the limited space available, brevity is encouraged.

Op-Eds from students must include the author's signature, telephone number, academic major and class standing.

Op-Eds from faculty members, administrators and classified employees must include the author's signature, job title, department name and telephone number.

Op-Eds submitted by members of the community must include the author's signature, address and telephone number.

Corner 6th & Monroe  
758-1100

**pip** PRINTING

25  
**RESUMES**

**\$19.95**

WITH THIS COUPON Exp. 3/31/89 REG. \$24.95  
A one page resume, typeset, proofed and laser printed on deluxe quality paper!

## SAA presents... The Hunt is On! 3rd Annual Dads' Weekend Trivia Hunt

Register at the MU Concourse —

1-5pm Friday,  
Feb. 24

9-11am Saturday,  
Feb. 25



## OSU PRIDE COLUMN DID YOU KNOW...

\*\*Mitchell Playhouse, built in 1898, was originally used as an armory and men's gym.

\*\*There are 118 flags hanging in the MU Concourse. Each one represents the home country of a foreign student. Some of these countries no longer exist.

\*\*The School of Education began in 1909 as the Department of Industrial Pedagogy.

\*\*Terry Baker, OSU alumnus, won the Heisman Trophy in 1962 for his outstanding athletic achievement. He also played basketball for OSU.

\*\*\*This bi-monthly column sponsored by

Blue Key  
Honorary

Alumni  
and Association



TO PROMOTE PRIDE

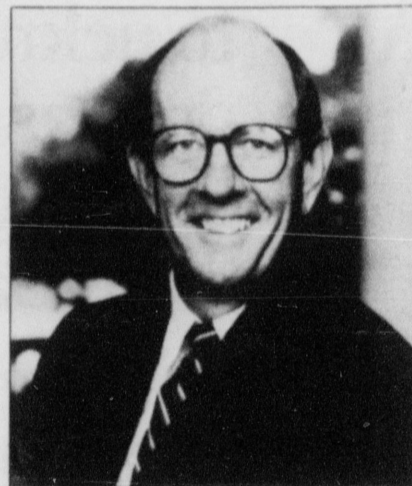
## the daily Barometer

would like to announce staff openings for Spring Term 1989:

- Managing Editor
- Design Editor
- News Editor
- Assistant News Editor
- Night Editor
- Copy Editors
- Wire Editor
- Frontiers Editor
- Reporters
- Sports Editor
- Sports Reporters
- Arts & Entertainment Writers
- Photographers

Those interested should pick up an application in MU East 118.

Deadline March 9



As *Time* magazine put it in 1984, Michael Deaver "knows Ronald Reagan better than any other man alive." His anecdotes about the President and First Lady are those of a close friend; his knowledge of the First Family and specific incidents, such as the assassination attempt, is unmatched.

ASOSU and the Dept. of Political Science present:

## —Michael K. Deaver— "The White House and the Reagan years"

*Influence, Affluence, and The White House*

No image maker in White House history has had Michael Deaver's impact. His imprint was on every Reagan act, from policy to press conference. His 20-year friendship with the Reagans gave him a unique depth in setting the stage for the right feeling, in the White House and abroad. His title was Deputy White House Chief of Staff, but his influence was more far-reaching than his nominal superiors. Michael Deaver's work flashed on screens around the world, wherever President Reagan went. Until 1985, he was the keeper of the image, Reagan's bridge to the world.

Friday, February 24 — 7:30 p.m.  
Milam Auditorium

*A Remarkable Success story, with a Message.*

# OREGON

## Three counties will be land use law guinea pigs

PORTLAND (UPI) — The Land Conservation and Development Commission Wednesday voted to develop a pilot project to test stiff new land use laws in three counties before they are adopted statewide.

The panel acted after Oregon Senate President John Kithaber, D-Roseburg, asked it to abandon statewide implementation of the rules in favor of a trial period in counties that volunteer.

The commission also broke out the controversial issue of where to allow housing construction in forest land and released two alternative proposals for public comment. One would prohibit houses on forest plots smaller than 80 acres. The other would allow authorities to determine the size of the plots on a case-by-case basis.

The actions were apparently approved before the meeting began because Gov. Neil Goldschmidt issued a statement before the end of the session commending the commission's decision.

"I believe that LCDC's action today takes us in the right direction," Goldschmidt said in the statement.

The environmental group 1,000 Friends of Oregon immediately condemned the board's action, saying it was delaying its mandate from the Legislature to improve land management rules.

"They are dropping the ball," said 1,000 Friends Executive Director Henry Richmond. "The forestry housing rules are being gutted. The policies being proposed by the commission's staff are weaker than existing law for the regulation of forest and farm land."

The commission has been struggling for months to come up with a method to prevent the state's farm and forest lands from being eroded by both permanent and recreational subdivisions.

At previous meetings, the commission had developed a three-tiered plan that would require some counties to adopt primary and secondary farm zones for forest and agriculture. Subdivisions would be prohibited on the primary land and allowed only under strict criteria on the secondary land.

Counties in the Willamette Valley, which are under urban

pressure, would have to divide land into primary and secondary categories.

Coastal counties would have the option of identifying primary

land, while eastern Oregon counties would be able to zone some lands as secondary without further protection of secondary lands.

### Marion County authorities say

## No 'short list' of Francke killing suspects

SALEM (UPI) — Marion County District Attorney Dale Penn Wednesday denied reports that authorities have narrowed the suspects in the slaying of Oregon Corrections Department chief Michael Francke to a "short list."

Penn said authorities had eliminated many people as possible suspects in the death of Francke, who was fatally stabbed outside his office Jan. 17.

But he said an inference was mistakenly made that law-enforcement officials have reduced the list of suspects to what Penn called a "hardcore few."

"It's a new slant to an old story and gives the wrong impression to everyone," Penn said of the report. "We have no short list or single suspect. The process of looking into different areas to try to establish people who would have had motives to harm him has involved excluding people."

"That process has been going on for a month and a lot of people have been excluded. The inference was drawn that we must have this boiled down to a hardcore few suspects. That's the wrong impression. We've excluded a lot of people but we don't have short list of substantial suspects."

Authorities are still seeking a dark-haired man who was seen running from the area the night Francke was killed, Penn said.

An Oregon State Penitentiary escapee who may have been a witness to the slaying was arrested Monday. But the escapee, Kris Keerins, 26, is not considered a suspect in Francke's death, Penn said.

Keerins was arrested at a southeast Salem home after

authorities received a tip on his whereabouts. He was held on escape charges.

Keerins has been convicted of various crimes, including burglary, forgery, theft and possession of a controlled substance. At the time of Francke's death, he was technically an inmate in the state penitentiary but was enrolled in a program at the Oregon State Hospital.

The hospital is across the street from the Corrections Department building. Officials said Keerins had access to the hospital grounds the night Francke was slain. Keerins later failed to return from a weekend pass.

## Prisoner sought

CORVALLIS (UPI) — Authorities searched Wednesday for an 18-year-old man who failed to return to an Oregon Children's Services Division work-study camp in Corvallis.

James Gray was given a pass to go to a store yesterday but did not return, CSD officials said.

Gray has been serving a sentence from Washington County since September 1984 for murder and fourth-degree assault and had been at the Corvallis facility since May, a CSD spokesman said.

Gray had been committed to state custody until his 21st birthday, he said.

# ACHIEVEMENT.



There are many ways  
to acknowledge it...  
one lasts a lifetime.  
Your College Class Ring —  
from Balfour!

THURSDAY - FRIDAY - SATURDAY  
Dad's Weekend Gold Sale

18K - \$100<sup>00</sup> OFF • 14K - \$75<sup>00</sup> OFF • 10K - \$50<sup>00</sup> OFF

Order your Oregon State Class Ring NOW  
for pre-graduation delivery

The Best Quality - The Best Selection - The Best Price  
Sales Representative 10am - 5pm



Campus Connection  
2013 NW Monroe  
Corvallis (Next to Togo's)



Balfour<sup>®</sup> No one remembers in so many ways.

# OREGON

## Helicopter property search violates rights, court says

SALEM (UPI) — The Oregon Court of Appeals ruled Wednesday that authorities may not use aircraft to hover or circle above private property and specifically search for drugs without getting a search warrant.

In a 6-4 decision, the judges ruled that sheriff's deputies violated the privacy rights of a Jackson County couple when they used a hovering helicopter to spot marijuana plants growing behind the couple's house.

The court ordered a new trial for John Ainsworth and his wife, Cheryl Lynne Ainsworth, who were convicted of manufacture and possession of a controlled substance after authorities seized 17 marijuana plants from behind their house, which is located on 14 acres of rural land in Jackson County.

The case involved a flight in which the sheriff's deputies used a helicopter to hover above the Ainsworths' property while looking for marijuana. The aircraft circled three or four times and, according to the Ainsworths' son, at one point descended to within about 15 feet of tree tops. Authorities said they had received a tip that marijuana was being grown on the property.

Based on information gained from the helicopter flight, authorities got a search warrant for the property, seized the plants and arrested the Ainsworths.

Judge John H. Buttler, writing for the majority, said air searches for drugs constitute an unconstitutional "intrusion into ... privacy" when they are conducted without a warrant.

"It is one thing for an aircraft to fly over property at a safe altitude en route to a destination at a normal operating speed ... during which some observations might be made of what is on the ground," Buttler wrote. "It is quite another thing when an aircraft hovers, circles or makes numerous passes over the property in a determined effort to observe the property."

The judges said such flights constitute legal searches, and therefore require a search warrant.

In a dissent, Judge Kurt C. Rossman accused the majority of "flights of fancy about the meaning of Oregon's constitution."

"The police officers in this case did not offend any legal or social norms when they passed through the public airspaces over defendants' property," Rossman wrote. "On the contrary, they did no more than what any member of the public could do."

In another case, the appeals court upheld the firing of two Portland police officers who allegedly used cocaine.

The two former police sergeants, Jay Decker and Dan Mason, were fired in November 1987 after the chief of police ruled that they had purchased and used cocaine over several years.

The officers sued the city, saying that bureau investigative charges violated their constitutional rights. A Multnomah County Circuit Court judge ruled in favor of the city, and the appeals court upheld that ruling.

## Agreement reached on proposed Bend-area National Monument

BEND (UPI) — Timber, environmental and geothermal energy interests have worked out a boundary agreement to pave the way for a proposed Newberry Volcanoes National Monument in central Oregon.

The proposed monument lost some acreage Tuesday as timber and geothermal energy interests pushed boundaries back from key logging and geothermal drilling areas.

Large sections southeast of Lava Butte and northeast of Newberry Crater were removed from the monument proposal, but the monument's western boundary was extended by environmentalists to protect scenic views west of Paulina Lake.

The changes took place during a 12-hour negotiating session held by a 30-member com-

mittee proposing the monument, which would focus on Newberry Crater, the caldera of a dormant volcano about 25 miles southeast of Bend.

The committee is composed of environmentalists, elected officials, Forest Service officials, timber and geothermal industry leaders and representatives of recreation clubs.

Guided by a mediator from the Forest Service regional office in Portland, committee members negotiated compromises to settle disputes over development and preservation of resources.

The committee will meet again March 26 to discuss a final monument proposal and settle wording of the legislation to create the monument.

## Timberline expansion approved

GRESHAM (UPI) — The Forest Service has approved plans to nearly double the skier capacity of the Timberline Ski Area on Mount Hood.

Mount Hood Forest Supervisor Dave Mohla said Wednesday the agency had given final approval to one of five options considered in an environmental assessment.

The plan includes a seventh chairlift below the existing Pucci lift and replacement of the Magic Mile and Palmer chairlifts with high speed, detachable, four-person chairs.

Also in the plans are two new parking lots, including a 5-acre lot about 1.5 miles below the lodge at the bottom of the Victoria station lift. Mohla said the lower lot would divert traffic before it reached an area where many motorists have to chain their cars on foul-weather days.

The changes would increase the resort's capacity from 2,500 skiers per day to 4,600. The plan also would allow skiing on the Palmer snow field in the winter season. The Palmer ski runs now are open only in the spring and summer.

There are no plans to modify the historic ski lodge or newer day lodge.

Mohla said the resort intends to make the improvements over the next decade as skier demands and budgets dictate. He said work could begin this summer on the new parking lots.

Full development would cost about \$20 million, said Dick Kohnstamm, lodge operator, who added that construction probably would go slow.

He said the first quad lift probably would be installed on the Magic Mile by 1992.



Miss Oregon State University Pageant 1989

sponsored by Sigma Alpha Epsilon

Proceeds will go to the Muscular Dystrophy Association

Watch it Live at 11:00am on your favorite local channel.

**31** KBVR-TV  
CORVALLIS

## DON'T LEAVE YOUR DAD HANGING ON THE OTHER END!



Pick up your Dad's Weekend Issue. Coming on Friday.

Schedule of Weekend Events

Advertisements of Sales

Advertisements of Events

Be sure to pick up yours!  
Friday February 24th

Free at Barometer Newsstands Everywhere

# NATIONAL

## Writers vow defiance to Khomeini

NEW YORK (UPI) — Some of America's top authors Wednesday read excerpts from Salman Rushdie's "Satanic Verses" and vowed not to show fear "in the face of intimidation" that has included death threats against the British writer.

Almost 1,000 people jammed the outside of the The Columns meeting hall where only 500 could be admitted under tight security. The rest stood outside in the rain.

About 50 anti-Rushdie demonstrators marched across the street waving placards that read, "Down with Satanic Voices," and "Boycott Viking Penguin," Rushdie's publisher.

Rushdie has been targeted for assassination by Iran's Ayatollah Ruhollah Khomeini, who considered the novel an insult to Islam.

Another reading was to be held Wednesday night in Los Angeles with Alvin Toffler, author of "Future Shock," and science fiction writer Ray Bradbury, while about 60 people, including members of the National Writer's Union, delivered petitions condemning the death threat against Rushdie to the Office of Iranian Interests in Washington, D.C.

The New York meeting of members of the 2,200-member writers' group PEN American Center included Susan Sontag, Norman Mailer, E.L. Doctorow, Joan Didion, Gay Talese, Robert Stone and Larry McMurtry.

Sontag, president of PEN American Center, said the organization had been involved in the Rushdie controversy since India banned the book last October.

Since then, she said, "We all have learned how easy it is to be afraid."

"But if we show fear in the

face of this intimidation, all of our institutions that support a free, literate society are hijacked," she said.

Rushdie sent his greetings to the meeting in a message delivered through his British publisher, in which his American wife, poet Marianne Wiggins, told the group that she and her husband were in hiding.

"We writers are a dangerous breed and always have been, and only fear can stop a writer writing and a publisher from publishing his work," she said.

After leaving the Iranian Mission, Writer's Union protesters marched to a Barnes and Nobel bookstore and a B. Dalton bookstore on Fifth Avenue to protest the decision by those two chains to pull the book from their shelves.

Representatives of the 2,600-member group also handed a letter to Iranian U.N. Ambassador Mohammad Jafar Mahallati expressing outrage at the intimidation Rushdie has faced since publication of his book, "Satanic Verses."

## Portland store getting threats; keeps 'Satanic Verses' on shelf

PORTLAND (UPI) — The owner of Oregon's largest bookstore says he's taken extra security precautions following threats made in connection with Salman Rushdie's controversial novel "Satanic Verses."

Michael Powell, owner of Powell's Books in Portland, said Tuesday his store received several threats by telephone last week. He did not elaborate on what extra security measures had been taken.

But Powell's has not joined other bookstores, such as Waldenbooks and B. Dalton, in removing the book from its shelves.

Iran leader Ayatollah Ruhollah Khomeini has called for the death of Rushdie and the

book's publishers, saying "Satanic Verses" defames Islam and the prophet Mohammed.

The Portland Rizwan Mosque, affiliated with the Pakistani Ahmadiyya Movement in Islam, said Rushdie and the book publishers were "irresponsible," but denounced the death threat.

"Islamic teachings contained in the Holy Koran and examples set by the holy prophet of Islam do not allow any violence against anyone on the basis of his faith or views," mosque officials said in a prepared statement. "Violence and disruption created in this regard is uncalled for and against the teachings of Islam."

## Gideons fights Bible vandalism

NASHVILLE, Tenn. (UPI) — Gideons International accused a "free thought" organization Wednesday of desecrating its Bibles in a campaign to remove them from hotel rooms around the country.

The Freedom From Religion Foundation is demanding that major hotel chains remove Gideons Bibles, and members are placing stickers that read "Gideon Exposed!" on the books.

"They're desecrating the Bible by using that sticker they use. When we run into it, we replace the Bible. We've been concerned by it," said Gary Dunsford at Gideons International headquarters in Nashville. "Our ministry is just to put Bibles in hotels and motels."

The Freedom From Religion Foundation, based in Madison, Wis., says Gideons is trying to "proselytize a captive audience."

Placing Bibles in hotel rooms "is an insensitive invasion of privacy," said Annie Gaylor, editor of Freethought Today, the group's newsletter. "If someone truly cannot survive without a daily dose of Scriptures, we feel sure they will take precautions and travel with their Bibles."

## Pizza threat costs job

EAST HAMPTON, Mass. (UPI) — The chairman of East Hampton's Board of Health has been fired for allegedly threatening to order an arbitrary health inspection at a pizza parlor that refused to make a pizza for him.

East Hampton selectmen voted 3-2 Tuesday night to discharge Board of Health Chairman Joseph P. Santaniello after a two-hour disciplinary hearing.

The decision resulted from allegations by James Pascoe, owner of the Pizza House restaurant, who filed a police complaint against Santaniello on Jan. 20. The complaint alleged that Santaniello threatened on that day to call an inspection because Pascoe refused to make him a pizza he had ordered by phone.

Pascoe said Santaniello owed money for a previous pizza he had ordered but failed to pay for.

Santaniello said he is considering an appeal.

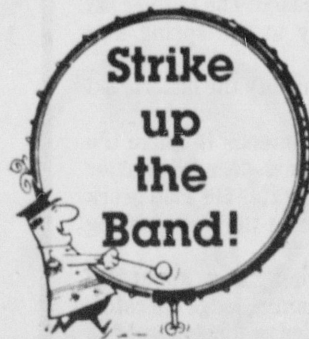


### Treat Your Dad Like A King!

Let your father know you're happy to see him (you're out of cash), you hope he gets involved in the weekend activities (takes you to dinner), and leaves with renewed faith in your future (doesn't find out about your party habits).

### Get Dad a 1/2 Price Personal!

for Friday's paper.  
Deadline 2:00 today  
at MU East 117

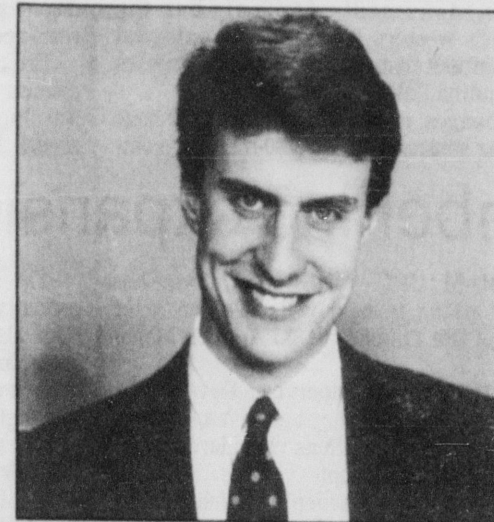


Strike up the Band!

### Educational Activities Committee

#### OPEN HEARINGS

WEDNESDAY & THURSDAY  
6:00 p.m. - 10:00 p.m.  
WED. MU 210 THURS. MU 105



For the latest in sports, news and highlights, watch Chris Nordmark!

Tonight on Newsline at 7:05pm

**31 KBVR-TV**



# NATIONAL

## Duke takes House seat Despite non-partisan challenge to eligibility

BATON ROUGE, La. (UPI) — Former Ku Klux Klan leader David Duke overcame efforts to block him from taking his newly won seat in the Legislature Wednesday and was sworn in as a member of the Louisiana House.

Duke, 39, who now heads the National Association for the Advancement of White People, said he would not use his position to pursue a racist agenda.

"I believe that discrimination is wrong and reprehensible when it is exercised against anybody, black or white, in this country," he said after being sworn in.

Rep. Odon Bacque had objected to letting Duke take his seat, claiming that he did not meet the residency requirement. But Bacque's tactic failed when the House voted 69-33 to table his motion and Duke then was sworn in.

Outside the capitol, about 25 students — both black and white — chanted "Don't seat Duke, keep Duke out."

Just before the House met, a state district judge in Metairie, which includes Duke's district, refused a request by John Treen, whom Duke defeated for the seat in an election Saturday, for a restraining order to prevent his taking the seat. Treen appealed to the state Supreme Court but it took no immediate action.

Duke had dismissed the residency challenge and said there was no precedent in Louisiana for denying him his seat. Duke, a Democrat turned Republican, had become a national issue as President Bush and GOP Chairman Lee Atwater tried to disavow him as a member of the Republican Party.

Bacque, the only independent in the Louisiana House, was greeted by boos from about 100 members of the audience when he rose in his attempt to scuttle Duke.

"I call on each of you to do your constitutional duty," he said. "The question before you today is not whether Mr. Duke was elected. He was. The question before us today is whether Mr. Duke is eligible to serve."

Bacque distributed copies of documents that apparently show Duke was not a resident of his district for one year — the constitutional requirement for running for the Legislature.

Following his swearing in, Duke told the House he would work with lawmakers — not

against them.

"I want to allay the fears of those who think I will be divisive or I will be a problem in this great body," he said. "I truly believe when we said the Pledge of Allegiance and we said, 'Justice for all, I believe in that for America.'"

Rep. Diana Bajoie, a black Democrat from New Orleans, warned Duke lawmakers would be watching his every move.

"Not only black folks in the state of Louisiana, but black folks across this country will be watching you," Bajoie said angrily. "We will watch the programs you bring forward. We are not going to let you move us backwards."

Duke was seated at a single desk on the last row of the chamber — only two of the single-desk modules in the House. The rest have space for two lawmakers. House sources who asked their names not be used told UPI several members of the lower chamber made hurried requests Tuesday to have their seating assignment changed so they would not have to sit next to Duke.

## Law schools bar FBI recruiting

WASHINGTON (UPI) — The FBI is barred from recruiting at two major law schools in the wake of a judge's ruling last fall that it discriminated systematically against Hispanic agents, The Washington Post reported Wednesday.

Deans of the law schools at the University of Michigan and Ohio State University confirmed to the newspaper that they imposed the ban because of policies prohibiting any employer who has been found to discriminate from using school facilities to contact students.

"If it was one case of (discrimination), that's one thing, but this was a finding of a de facto policy," explained Lee Bollinger, the University of Michigan dean, who told the Post he imposed a one-year ban against the FBI after complaints from several student groups.

"It was deeply offensive to our own students to assist that organization in hiring," Bollinger told the newspaper.

## Stars & Stripes censored, former chief editors say

WASHINGTON (UPI) — The Pacific editor of Stars & Stripes charged Wednesday that censorship at the newspaper is so bad that some military staffers have been "badly abused for writing honest stories" and others had careers ruined.

Defense officials and the two military editors in chief of the Pacific and European editions denied the allegations, leveled mostly by civilian reporters of Stars & Stripes and supported by a recent General Accounting Office investigation.

The conflicting views were presented in testimony before the House Armed Services Subcommittee on Readiness.

Dewey Brackett, the Pacific editor of Stars & Stripes, and two former editors of the Pacific edition — Timothy Hutchens, executive editor 1981-84, and Paul Sherbo, news editor 1984-87 — all testified news stories unfavorable to the military are routinely killed by defense officials.

"In the past three years we have lost some of our very best talent because the newspaper is no longer a place where good, honest jour-

nalists can practice their craft without compromising principles basic to that craft," Brackett said.

"There have been some very dirty things done to innocent people at Pacific Stars & Stripes," he said, adding that military as well as civilian reporters suffered as a result of the censorship.

"Many of our enlisted journalists have actively supported and encouraged the civilians who complained to Congress. Some of these military staffers have been badly abused for writing honest stories while others have had their military careers ruined," Brackett said.

The newspaper's daily European edition is put together in West Germany and the Pacific edition in Tokyo by a team of mostly civilian editors and reporters whose editor in chief is a military officer and answerable to the military command.

Hutchens said, "During almost my entire three years at the newspaper, I had running skirmishes with various generals and admirals who wanted to kill or plant stories in the news columns."

The  
Second  
City

The Show where Shelley Long,  
John Belushi, John Candy,  
and Joan Rivers all started.

..... Coming Dad's Weekend, Feb. 25.  
Beer and Wine available before the show - COME EARLY!

- Tickets ON SALE NOW  
in the Student Activities Center
- 7:30 p.m. Saturday, Feb. 25
- LaSells Stewart Center



## Agent Norman Mollerup of the F.B.I.

Will be speaking on the F.B.I.'s role  
in our society. His lecture will be followed  
by a question and answer period.

This Thursday, 10:00 - 11:00 a.m. in M.U. 105

After you've shown  
your folks around,  
show them this.



After they've seen where you eat, where you sleep, and where you go to class, show them what's going to help you study.

The IBM® Personal System/2™ is the best way to show your parents just how serious you are about your grades. It's easy to learn and easy to use, and can help you organize notes, revise papers, produce high-quality graphics, and more. And if you're eligible, you'll even get the IBM PS/2 at up to 40% off.

So after you've shown them around, show them what counts.

IBM Representatives will be on campus Feb. 24 from 8:30am-2:00pm  
MU counter across from Corner Junction  
or contact: OSU Book Store Computer Base, 754-2259

IBM and Personal System/2 are registered trademarks of International Business Machines Corporation

# CLASSIFIEDS

## Classified Ad Rates

### Classified Ad Rates

20¢ per word/per day  
(\$3.00 per day minimum)  
Hearts ♥ 30¢, ♥ 75¢/day  
Greek Letters (2-3) \$1.50/day  
Large Type \$2.50/day  
(up to 15 characters)  
Ad deadline is 2 p.m.,  
one day before publication  
MU East 117

## Help Wanted

**SUBSTITUTE DIRECT CARE**  
We will train you to work in our five person intensive training homes for the developmentally disabled. If interested contact ARC at 765 NW 5th, Suite 103. Call 753-1711 for more information.

**ALASKA SUMMER EMPLOYMENT**  
- Fisheries. Earn \$600 plus/week in Canery. \$8,000-\$12,000 plus for two months on fishing vessel. Over 8,000 openings. No experience necessary. Male or Female for 52 page employment booklet, send \$6.95 to M&L Research, Box 84008, Seattle, WA 98124.  
30 day, unconditional, 100 percent back guarantee.

**GOVERNMENT JOBS!**  
Now hiring in your area, both skilled and unskilled. For a list of jobs and application, Call 615-383-2627 Ext. J395.

**OVERSEAS JOBS: \$900-2,000 mo.**  
Summer, year around, all countries, all fields. Free info. Write LJC, PO Box 52, Corona Del Mar, CA 92625.

**ALASKAN SUMMER JOBS with ARA** Outdoor World. Positions in all aspects of hotel operations located in Denali Park (Mt. McKinley), Alaska. Sign up for 2/27 interview at Career Placement, basement of Administration Building.

**Now hiring enthusiastic personnel. All positions. Apply in person at Pizza Hut, 455 NW 5th or 2575 NW Kings**

**SUMMER CAMP JOBS**  
For men and women. Hidden Valley Camp interviewing March 8. Make appointment at Career Planning and Placement.

Coordinator position open. Coordinator of the conversant program for the English Language Institute on campus. Personnel Management and organizational skills needed. Experience with international students desired. Main duties to begin summer term (20/30 hours per week). Some duties to begin spring term (approximately 10 hours per week). Student worker or work-study. Beginning wage \$4/hr. Send resume to Bob Sapp, English Language Institute, Extension Hall Annex, Osu Campus.

## Help Wanted

Save deskwarming for your old age! Head North this summer for adventure of a lifetime (and \$300 a day) For brochure, send \$8.95 to: Earth First, 3220 N St. NW Suite 358, Washington D.C., 20051.

**Retail Sales**  
Part-time, possibly full-time, position in Downtown Corvallis shop. Need personable, Enthusiastic, Energetic person interested in sports and recreation. Should be available for Summer work. Send Resume to Sales Position, P.O. Box 874, Corvallis, OR 97339.

**WORK STUDY NEEDED** Spring term to do light clerical work. Variable hours. Ability to do accurate work. Answer phone. Run errands. Run copy machine. Some typing. Phone 2686, Ginny, Department of Health.

**KBVR-TV** Has staff positions open for Spring Quarter. Positions include: Campus Video, Promotions Director, Remote producer, Video promotions, Production manager, and programming director. Applications are available at the KBVR reception desk in Snell Hall. Completed applications due Tues. Feb. 28 by 5 p.m. Interviews Wed. March 1. For more info, call Chris Couch or Fred Paris at 754-3522.

## Wanted

**CAN YOU HELP?**  
Desperate Senior seeks 1 ticket to the Dad's weekend basketball game. Please call 757-1965 and leave a message.

Would like Three Basketball tickets for the Stanford game.  
Have a terminally ill family member I would like to take them to the game.  
753-8528

Heart broken Dad wants to see the basketball game on Saturday. If extra tickets call Stephanie and leave message 758-9636 Ext. 3458.

Need two tickets two Stanford game:  
1 student, 1 General admission 752-6166 (Evenings)

## For Sale

**HIGH QUALITY IBM COMPATIBLE COMPUTERS, XT, \$595. AT, \$1,295.**  
Software included. 1 yr. warranty 754-8543.

**FUTON FRAMES**  
Queen — \$95  
Double — \$90  
Single — \$85  
Call for more info.  
753-9105 after 5 p.m.

**Box Constructor**  
Hit Dad up this weekend for an exotic pet of your own. 1 1/2 yrs old, quiet yet daring—Great pet as well as investment. \$230 OBO. Mat 758-7314.

**In Time For Spring!**  
1985 Honda Elite 50  
Black w/Red trim under 1600 miles. Runs great. Wholesale \$325-350, Asking \$350. Negotiable. PH: 757-0902

## For Sale

Fender acoustic steel string guitars, case, \$175. Fingerboard Extension 752-5679, 433 NW Third, 11:5-30, Tues-Sat.

**1984 Nissan 200SX**, loaded, digital dash 753-9554. **1985 Pulsar**, black, low miles 753-9554.

**YAMAHA DX-7** keyboard with access to 1500 sounds \$750/obo. 752-0495.

**Special**  
Leading edge D, 2fl. \$895  
Leading edge D, 20mb. \$1195  
Hyundai XT, 20mb. \$1125  
Hyundai AT, 20mb. \$1595  
monitor, keyboard, DOS, Word Processing, Spreadsheet, data base  
The Computer Exchange  
350 SW Jefferson  
753-1157  
752-1839

Computer, IBM Compatible Leading Edge 640 k RAM, 30 MB hard disk, EGA color monitor, mouse, \$1,395. 757-8440.

**1988 Beaver Yearbooks Are Here**  
Pick up your clearly classic in the Student Activities Center.

Nearly new Danish trundle bed with bookcase, headboard, Danish mattresses and linens included. \$160. Call 757-3212.

**\$949 20MB XT System**  
Complete 10mhz system with 20 MB hard drive, 512 K RAM, 360 K floppy, monographs, 101 keyboard, serial-parallel-mouse-game ports, clock/calendar.

**Beta Computers**  
1939 NW 9th 758-0965  
Elian F.A.S. 190 cm. GEZE 930 bindings, used 1/2 season. 753-9225 after 3:00 p.m., \$150, also dining table and 4 comfy chairs \$100.

## For Rent

Large 2 bedroom apartment. Near campus. New appliances, nice neighbors. We're graduating in March. Help \$395 month. Call 752-1489.

Take a lease. One bedroom apt. furnished \$285/mo. on 115 NW 15th No. 14. Call 754-1141.

## Housing

The College Inn, 155 NW Kings Blvd., is now accepting applications for spring term and/or next school year. A great place to live! Each room w/ bath. Weekly housekeeping. Delicious food! recreation facilities, universal gym, spacious lounges, laundry, vending. To apply or for more information, come to the desk or call 752-7127.

## Roommates

Roommate to share 2 bedroom apartment w/male junior for spring term. Furnished, parking, laundry, 26th and Fillmore. \$170/mo. plus 1/2 power/phone. Ask for Jeff G. 758-5513.

## Roommates

**Roommate Wanted:** Male or Female to share 3 bedroom townhouse close to campus \$200 month and 1/3 utilities. Call Scott or Craig at 752-0518

## Special Notices

**Internationals- Practice English, enjoy discussions, study the Bible.** Sundays, 10-11 a.m., Kings Circle Assembly. Call 757-9080 or 752-8861.

**ADOPTION** Financially secure loving couple, anxious to adopt infant. Legal. Medical expenses paid. Call 201-445-3606 collect.

**ATTENTION OSU CLUBS**  
Have your club represented in the 1989 Mark of Excellence Yearbook. The deadline has been extended to March 15. The cost is \$60. Any questions, call 754-3501.

**Julie,**  
Don't forget to bring

your dad to  $\Delta\Delta\Delta$   
Dad's weekend  
Pancake Breakfast!  
It's on Sunday, February 26th from 9:00 a.m. to 1:00 p.m. at Tridells, 340 NW 26th. It's even free! See you there!  
Amy

**USED BOOK SALE**  
Friends of Benton Library, Benton County Fairgrounds, Saturday, February 25, 9-6 Sunday, February 26, 10-4. No admission.

**CONSUMER TASTE TEST**  
30 males needed to evaluate Beef Jerky Where: Wiegard Hall room 204  
When: Thurs. Feb 23 11:30-2:30 p.m.  
Takes about 5 minutes  
Dept. of Food and Science

## Services

**CRISIS PREGNANCY?** Free confidential counseling/pregnancy test. Corvallis Pregnancy Ctr. 757-9645.

**KSJ CARPET CLEANING**  
Private carpet cleaning business. We do top quality work at a economical price. Free estimates. Contact Gray Byrd at 757-9856.

**ABRA-CA-DATA — 754-8141**  
Word Processing — Typing  
Resumes, Manuscripts, Theses, etc.  
Editing  
Free Spell Check  
Free Pick-up/Delivery

Editing, Word Processing, Graphics, Theses, Resumes, Manuscripts, Papers, Laser Printing, Science Math Symbols 753-4886

**Typing By**  
Legal Secretary Turned Mom  
\$1.45 page, free spell check, courier service. 757-1076

## Business

**GROUP DISCOUNTS**  
T-Shirts, Sweatshirts, Polo-Shirts, Sportswear, etc. & glassware. "PARTY FAVORS" are custom screen printed at SHIRT CIRCUIT, 1413 NW 9th. 752-8380

## Classes

**JOIN THE FUN!**  
Learn to Scuba  
Watersports II, 757-8851

## Personals

**FREE DADS' WEEKEND PANCAKE BREAKFAST**  
WHEN: Sunday, Feb. 26th  
9 a.m. - 1 p.m.  
WHERE:  $\Delta\Delta\Delta$   
340 NW 26th  
Donations Accepted

Congratulations **KAP** Basketball team on making the playoffs. You had an awesome season. Bruce you are a great coach!

Xi Love, your fans  
**To my Secret Admirer,**  
How can I watch what I can't find?  
A.L.M.

**HONEYBUNNY**  
Since I won't be here I thought I better say, **Happy Birthday Linda** and I will make it up to you on Saturday Night.  
**Miss Me**  
Love Russell

**My SAE buddy**  
Thanks I needed that!  
You are the only one that can make me smile!  
Love, your buddy

**KΔ** Amanda and Michelle  
Dinner at the Landing  
Those LITe's were outstanding  
Our dates had funkin' soul  
and crab flew from the bowl  
So we got there by eleven  
which happens to rhyme with heaven  
Woofing down helium balloons  
and dancing to the tunes  
The Emerald Ball was great  
So who cares if we were late  
-Your tall cool ones  
Pikes Jim and Vic  
Baby?

**OSU Students**  
Wear your OSU sweatshirts today to support the Beavers. Be sure and go to the game and cheer them to victory.  
Sponsored by Blue Key Senior Honorary in an effort to promote spirit

## Personals

To the Pi Kappas from hell, Stewart, Brian, Scott, Chad, etc.  
Thanks for letting us party in your room Sat Night! There's was fun, the souvenirs too!  
♥ Sig Kaps  
Karin and Polly

**Michelle**  
Yogurt with granda  
jogging with earmuffs,  
going psycho over men  
these wouldn't be groovy  
without you for a roomy!  
♥ & peace  
Amy

**Elizabeth Richards**  
Hun, hun, hun  
Your no longer 21  
So kickoff your shoes  
Your now 22  
Fun, fun, fun  
Happy B-Day  
Love Steve

**Rick**  
You're the best!!  
Thanks for all the fun Saturday Night!  
♥ Ami  
P.S. I knew you'd live through the bus ride

**ATQ**  
We had an awesome time at the study break.  
You guys are great!  
Love,  
Alpha Xi's

Alpha Xi Delta proudly welcomes our newest pledge Kim Nesbitt.

Xi Love your Sisters  
KKG Michelle McNeil  
KAT Maria Mangiarelli  
AXO Jana Furer  
We loved having you stay here. You ladies are the greatest.  
Love,  
Alpha Xi's

**'Dear Frankie**  
I'll be seeing you in all the old familiar places, now that I have new glasses from Dr. Ellett! Call 757-7078

**Greek Council**  
Meeting, Thursday  
at Pie-Kappa-Phi  
at 6:30 p.m.  
NO SHOW is \$10.00 fine  
Exec.

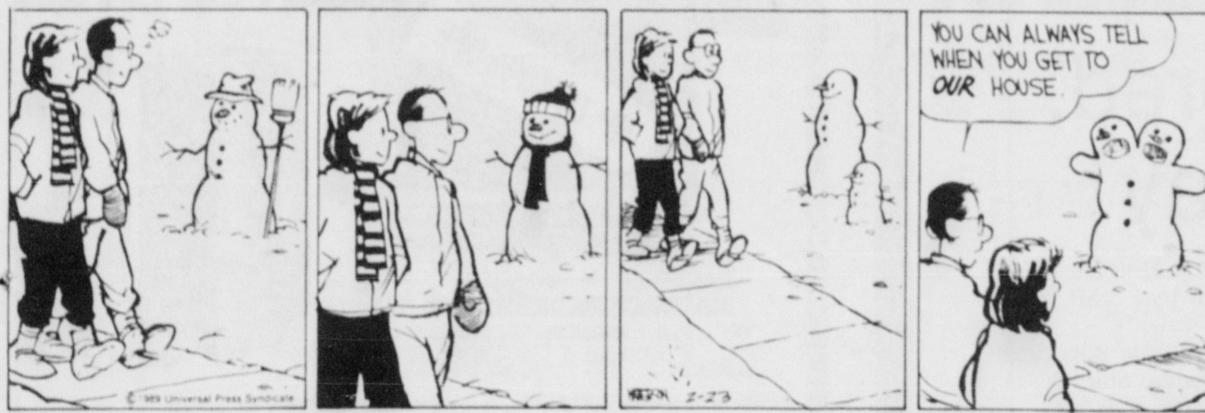
**ΑΣΦ** Ken-boy and Tyler,  
Rapping in the rafters, rushing the barn dog,  
"Where'd my date go?" "Watch your step"  
feeling sick on the bus. Fly, Girl, Stamp on the cheek instead of a kiss.  
We couldn't go wrong with dates like you!

♥ **ΑΔΠ** Dana and what's her name (Juliet)

## Corrections

**Mountain Bike**  
88 Schwinn Mirada, Index shift, 5 months old. \$250 or best offer.  
Dan Morris 758-5409

## Calvin and Hobbes



by Bill Watterson

## BLOOM COUNTY



by Berke Breathed

## Rubes

By Leigh Rubin



"You know, old boy, it's about time we did our part for conservation. So let's save some of this sucker for tomorrow's lunch."

# Blazers lose despite Vandeweghe's presence

AUBURN HILLS, Mich. (UPI) — There's nothing like a standing ovation to make a stranger feel right at home.

"It was really a nervous point for me," Mark Aguirre said Wednesday night of his introduction to his new home fans. "I didn't know if they were going to boo me."

Aguirre, given a nice ovation in pre-game introductions then a standing ovation when he entered the game at the four-minute mark, made a 16-point home debut to help his new team, the Detroit Pistons, take a 105-94 NBA victory from the Portland Trail Blazers.

"I got even more nervous then," said Aguirre, who missed several easy shots early but swished a three-pointer from the corner to get settled in. "It was a relief."

"I didn't know what to expect. Adrian Dantley was such a well-liked person here. That's a big chip off my shoulder. It meant everything."

It meant they're going to give me a chance — and I'm not going to fumble it."

Aguirre made half his 14 shots but only one of five free throws. There were times he didn't follow the ball upcourt and occasions when he looked lost coming back on defense.

But the standing ovation showed Pistons' fans are ready to disbelieve the stories of moodiness, loafing and indifferent play that preceded Aguirre to the club.

"I'm going to let you decide that over a period of time," Aguirre said. "I will say this: two of the NBA's front-line players, Magic Johnson and Isiah Thomas, are my close friends. I don't think they would have put up with me all these years if I was like that."

"He and Dennis Rodman are a lot alike," Thomas said. "They show their emotions on the court. Mark gets mad, gets upset — but it's usually with himself."

Aguirre started the second

half with four of Detroit's recent starters and scored eight points in the first 5:05 to help the Pistons expand a 47-38 halftime lead into a 57-44 margin. They took a 75-60 lead into the fourth quarter.

"I thought he fit in a lot better," Detroit Coach Chuck Daly said. "It's not easy. We have to continually find out how to use him. He'll get better. I like his work on defense."

Joe Dumars and Vinnie Johnson ended a scoring slump by Detroit guards with 19 and 18 points, respectively. Thomas and James Edwards scored 13 points while Dennis Rodman, whom Aguirre will eventually displace as a starter, added 12.

Portland has now lost six straight, three under new Coach Rick Adelman, and is back down to .500 for the first time since Dec. 7. Detroit had lost two straight road games, Aguirre's first action with the club, but has won 12 of its last

16 overall.

Sam Bowie came off the bench to share the lead for Portland with 19 points, the same as Terry Porter. Adrian Branch and Kevin Duckworth hit 15 while Jerome Kersey and Steve Johnson added 10 apiece for the Blazers.

Portland again played without Clyde Drexler but its leading scorer is expected to rejoin the club Friday in Cleveland — a week after breaking his nose against in a loss to the Los Angeles Lakers.

Kiki Vandeweghe rejoined the Blazers Wednesday night, saw limited action and scored two points. Vandeweghe vetoed a trade that would have sent him to Indiana. Vandeweghe countered that team officials were "trying to get back at me."

But of cheer to Portland fans was the play of Bowie, especially offensively.

"He played well in the first half (11 points) and I went to him more in the second," Adelman said. "I probably went more minutes with him than most would. But as long as he is playing hard, I'll let

him keep going to get over that conditioning period."

"The coach is real easy going," Bowie said. "He has confidence in all of our abilities. Most people don't expect a 7-footer to shoot jump shots."

## Minnesota bids for 1992 Superbowl

ST. PAUL, Minn. (UPI) — A group headed by Minnesota Gov. Rudy Perpich and Minnesota Vikings General Manager Mike Lynn announced Tuesday they will go "full speed ahead" with a bid for Minnesota to host the 1992 Super Bowl.

The group met in the governor's office and Perpich asked everyone for "complete cooperation and coordination" in an effort to bring the 1992 game to the Hubert H. Humphrey Metrodome in Minneapolis.

"Everybody agreed to go full speed ahead," said Marilyn Nelson, chairman of the special Minnesota Super Bowl Task Force. "We will be inviting members of the community to serve on the task force immediately."

Nelson estimates show a Super Bowl and its related events would bring an estimated \$75 million to \$125 million to the Twin Cities metropolitan area.

An NFL subcommittee in charge of selection will meet March 1 in New York to "establish specifications" for the 1992 site. Four cities are bidding for the game — Minneapolis, Indianapolis, Seattle and Pontiac, Mich.

# CALENDAR

The deadline for calendar notices is 2 p.m. on the day before publication. Information must be turned in at the Daily Barometer Classified Ad Office, Snell 117A, on the forms provided. All events listed in the calendar are open to the public unless otherwise noted. Calendar notices are subject to editing.

## Thursday

### Meeting

- Beaver Pride, 7:00 p.m., Gill 217.
- Bowling Club, 4:30-6:00 p.m., MU 214. Rules Review Committee.
- Business Student Representative Council, 6:30 p.m., MU 110.
- Christian Science Org., 5:30 p.m., MU 212. Public is welcome to attend.
- Country & Western Dance Club, 7:00 p.m., Womens Building Lobby. Organization meeting, anyone interested is invited.
- Discovery Program, Dixon Recreation Center. Drop-in aerobics - 50 cents per class. Mon-Fri. 9:30; Sat. 10:30 p.m. & 12:30 p.m.; Sun 12:30, 2:30 & 5:30 p.m., Through March 10th.
- Education Student Council, 6:30-7:30 p.m., MU 209.
- Native American Student Assoc., 5:30 p.m., Longhouse.
- OSU Rodeo Club, 6:30 p.m., With 217.
- Propeller Club, 6:30 p.m., MU 213C.
- Rodeo Club, 6:30 p.m., Linn County Fairgrounds. IMPORTANT.

Student Alumni Association, 6:00 p.m., MU 102.

Student Fees Committee, 5:30 p.m., MU 106. Budget Presentations.

Womens Center, 12:1-90 p.m., Benton Annex. Silent Lunch. Communications via sign language, open to men and women of all skill levels.

### Class

Recreational Sports Discovery Program, 4:30 p.m., Dixon Recreation Center. Join the Worlds largest Aerobix class on Thursday, Feb. 23rd to be held in 100 campuses across the country! Free class with door prizes.

Career Planning & Placement Center, 10:30 a.m., Adm. Bldg. Rm 24-B008. Resume Writing.

Career Planning & Placement Center, 3:30 p.m., Adm. Bldg. Rm 24-B008. Coop Education.

### Entertainment

Department of Music, 12:30 p.m., MU Lounge. Panormo Trio.

### Speakers

ASOSU National Affairs Task Force, 10:00-11:00 a.m., MU 105. Agent Norman Mollerup of the FBI will have a lecture/question and answer on the FBI.

College of H and PE, 7:00 p.m., LaSells-Ag Leaders Room.

### Seminar

Office of Int'l Education, 5:00-6:00 p.m., MU 213B. Practical training seminar for Foreign Students.

## FRIDAY

### Meetings

Intramural Sports, 4:00 p.m., Langton 127. Meeting for all managers of teams participating in 1M Water Polo playoffs.

ISOSU Int'l Ed office, Bahai Club, 3:30 p.m., 448 Snell Hall.

OSU Rifle Club, 5:00 p.m., McAlexander Field House Indoor Range.

OSU Toastmasters and Coeds, 12:30 p.m., Crop Science 119. Coed club for practicing public speaking. Guests are welcome.

### Entertainment

Hotel, Restaurant, and Tourism Management Program, 7:00 p.m. dinner, 8:00 p.m. auction, Nendels Inn Corvallis. Reservations required call HRTM office 754-3693.

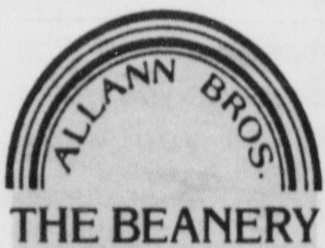
Sports Clubs, All Day, Dixon Recreation Center. 25 years of Sport Club Exhibit. Refreshment on Saturday from 11 a.m. to 2:30 p.m. Drawing for prizes at 2:30, Saturday.

### Miscellaneous

Bahai Club, ISOSU, International Education, 3:30 p.m., Snell 448. International students coffee hour.

### Speakers

College of H and PE, 10:30 a.m., STAG 329.



2541 NW MONROE & 500 SW 2ND

Experience Classically Roasted Coffee.

Specialty Drinks, Soups & Salads, and Coffee Accessories.

Daily Morning Pastry Specials Fresh From Allann Bros. Bakery. Until 10 AM

Store Hours:  
2nd Street  
6:00am-11:00pm  
Monroe Street  
6:30am-11:00pm

## '88 CLOSEOUTS!

- SPECIALIZED**  
STUMPJUMPER \$499<sup>95</sup>  
(Save \$200<sup>00</sup>)
- RALEIGH TECHNIUM**  
CHILLS \$459<sup>95</sup>  
(Save over \$100<sup>00</sup>)
- DIAMOND BACK**  
ASCENT EX \$399<sup>95</sup>  
ASCENT \$349<sup>95</sup>  
TOPANGA \$289<sup>95</sup>  
Limited to stock on hand

328 SW 2nd BIKE-N-HIKE 753-2912

## KBVR-TV Celebrates Black History Month!

Tonight's feature:  
"To Kill a Mockingbird"

Tune in tonight at 9:30 p.m., immediately following the "Mt. St. Helens Special" on your favorite local channel!

**31 KBVR-TV**  
corvallis

Welcome Your Dad!  
with a  
**1/2 Price Personal**  
Good for Friday Paper Only

# SPORTS

## Munson provides consistency for Beavers

### Key figure on 10th ranked team excels on floor, bars

By ROD HESS  
of the Barometer

Monique Munson was a signature away from enrollment at the University of Southern California after her senior year at Loretto High School in Sacramento, Calif. She had long envisioned attending the university close to home.

But something happened. USC dropped their gymnastics program. Munson was not only disappointed, she knew she could not attend a university without gymnastics.

*"You really get a warm reception when you come to Corvallis."*

—Monique Munson

After observing other schools she found that OSU fulfilled her needs as a university with a stable gymnastics program.

"Gymnastics is a really high priority on their list. I knew they would not drop the program if I came here," said Munson, one of three seniors on this year's team.

However, there were more than just security reasons behind her choice to become a Beaver in 1986.

"You really get a warm reception when you come to Corvallis. This is a really wholesome setting," Munson said.

Born in Minneapolis, Munson did not really get a taste for the Midwestern climate. Her family moved to Sacramento when she was one year old. She still lives there when not in school.

Gymnastics was not forced upon her as a child.

"My mom used to teach ballet and jazz and I used to come along with her," she said.

One day, Munson said, she saw some kids in the other room tumbling. After receiving permission and playing with them, she knew she had found a sport she really liked.

"I took a liking to tumbling from there," Munson said.

Munson is now 21 and majoring in speech communication. The team's most consistent gymnast on bars and floor, she is a key figure on Oregon State's 1989 team, which is currently ranked second in the nation in the floor exercise and 10th overall.

"She's been really consistent in all her events, except vaulting," said head coach Jim Turpin. "When she's on, she's as good as anyone in the country."

Munson really likes this year's team because none of the women have big egos or want to grab the spotlight, and the competition between team members pushes them to reach new goals.

"It's competitive — it (the atmosphere) keeps you going and it makes you work harder," she said.

One of her most memorable moments in her career was when Oregon State overtook a favored UCLA team in the NCAA Western Regionals held at Gill Coliseum last year, 188.55-187.05.

"It was pretty exciting as we turned the tables to defeat UCLA," she said.

*"It's competitive — it (the atmosphere) keeps you going and it makes you work harder."*

—Munson

Munson plans to complete her degree in speech communication in the Fall of 1989, but intends to broaden her degree into the field of speech pathology because she would ultimately like to work as a speech pathologist in an elementary school.

"I like to work with children," Munson said.

About the upcoming meet versus Washington at Gill Coliseum on Feb. 24, she sees the 18th-ranked Huskies as a challenge.

"They're a good team — we're going to have to be on our toes. We're going to have to perform," Munson said.



GARY L. WEST/The Daily Barometer

Senior Monique Munson has proven herself as OSU's most consistent performer on the uneven bars and floor exercise this season. Munson and the 10th-ranked Beavers will be in action Friday at 7:30 p.m. against 18th-ranked Washington.

## Swimmers hope for better results this time around

By TIM MARTINEZ  
of the Barometer

If last season is any indication, things aren't looking good for the Oregon State swim team.

Last season at the Pac-West Classic, the Beavers finished second behind Washington, 214-149, and then placed eighth in the Pacific-10 championship, 152.5 points behind the Huskies.

Last weekend at the Pac-West meet, the Beavers finished second behind Washington, 218-142.

But, then again, last year's team didn't have Julie Ahrendt or Lisa van Lobel Sels.

Ahrendt and van Lobel Sels set school records in Seattle and are OSU's top two swimmers heading into the Pac-10 meet, which starts today and runs through Saturday in Cerritos, Calif.

Ahrendt, a freshman from Corvallis High School, broke the school record in the 100-yard breaststroke with a time of 1:08.41. The former record of 1:08.70 was set by JayDee McIntyre in 1984. Even though she set a school record, it was not a personal record for Ahrendt, who swam 1:07.61 in high school.

A transfer from UC Santa Barbara, van Lobel Sels broke Becky Blinkhorn's 8-year-old record of 24.53 in the 50-yard freestyle with 24.46-second effort last weekend.

Coach Laura Worden was pleased, but not surprised by her swimmers success last weekend. The Beavers have been "swimming tired" or competing after a hard week of workouts all season. Worden also has her swimmers swim multiple races or wear two swimsuits during a meet so they will hit their peak at the end of the season, when the meets are most important. This practice is known as "tapering."

"I was really pleased with our school records at the Pac-West meet," Worden said. "I knew Julie would have a chance to break two school records. She's likely to break her own record again. She's right on schedule." Ahrendt's high school time in the 200-yard butterfly (2:26.81) is also faster than the school record (2:28.07). Ahrendt's best time this season was at the Pac-West meet when she swam 2:29.11.

Like her teammate, van Lobel Sels is also peaking, Worden said.

"Lisa has been tapering real well and should be ready to go

on her sprints," Worden said. "Both Julie and Lisa should be our highest finishers at the Pac-10 meet."

Worden is also counting on swimmers like Tammy Scott, Sue Maxwell, Andrea Bittenger and others to try to catch the Huskies. This may be a difficult without their top distance freestyler, Kelly Kaplan, who decided to red-shirt this season.

Kaplan, who holds the school records in the 500- and 1,000-yard freestyle, decided to sit out this season after the OSU Invitational Jan. 28.

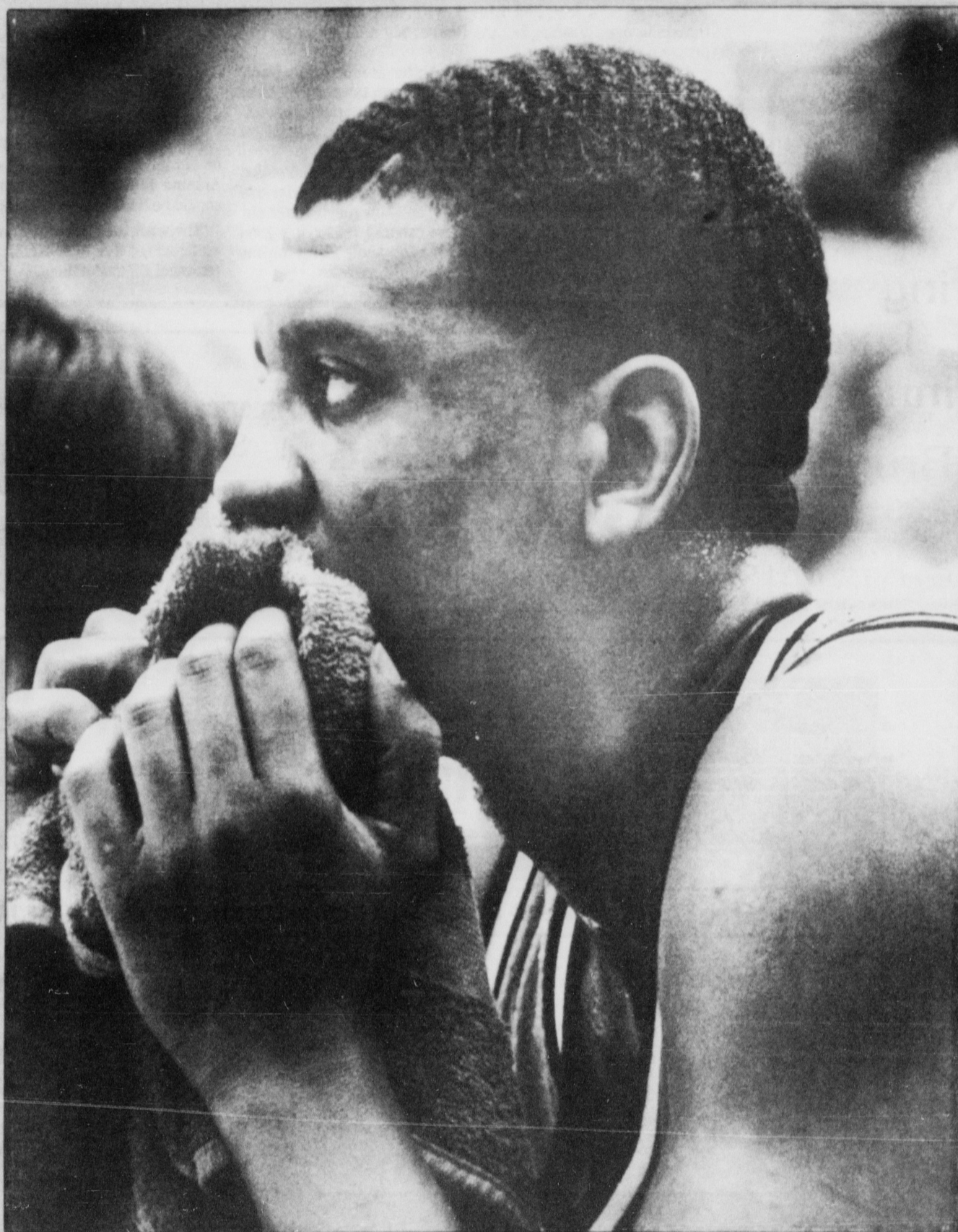
"We would like to narrow the gap between us and Washington," she said. "It will hurt us being without Kelly Kaplan, but we should be strong on the sprints and we have an excellent chance to improve in the relays. We have a chance to break school records in three of our five relays."

Improvement in the relays could be the key to OSU's success this weekend, Worden added.

"Doing well in the relays would help us point wise," she said, "because you gain a lot of points through relays."

The meet, hosted by USC, will get underway with the preliminaries at 11 a.m. this morning.

Oregon State  
**Beaver Basketball**



**Oregon State vs. California**

7:35 p.m., February 23, 1989, Gill Coliseum

**Oregon State vs. Stanford**

3 p.m., February 25, 1989, Gill Coliseum

# Improved post play a key for the Beavers

By RICH PETERSON  
of the Barometer

Improvement of the post play might be the biggest asset for the Orange Express coming down to the end of the season. The post men will face a severe test when the Beavers face California tonight at 7:30 p.m. in Gill Coliseum.

OSU is 10-4 in the Pacific-10 and 18-5 overall, tied for third place with UCLA. California is fifth in the conference with an 8-6

mark and 17-9 overall. Last time the two teams met in Berkeley, OSU nipped the Bears 69-64 in overtime. One of Cal's biggest threats is center Leonard Taylor, who is averaging 19.5 points and 8.3 rebounds per contest.

"We could not stop him in the first game until we put Eric Knox on him," OSU coach Ralph Miller said. "Eric of course was a teammate of Leonard's in high school. He took the chore in overtime and finally shut him down and until that point, Taylor had a picnic against us."

But the way the Beaver post men are playing right now, it won't just be a free lunch for Taylor. Saturday in a 106-66 thrashing over Washington, the Beaver big men put on an impressive show.

Miller is more than pleased to get better production up front. "It is great timing because it is coming down toward the end of the season. This is the time of the year if you can possibly improve some more, do it. I believe we are improving at the right time of the season, at least I hope so."

Taylor lit up the arena last time scoring 33 points and pulled down 11 rebounds. Miller is hoping for better play on Taylor this time around. "It will be interesting to see how much better our post defense is this time around. If we can do a reasonably good job on Taylor, then we should be able to handle about anyone else in the conference."

California also gets good marks from guard Keith Smith, who is averaging 13.6 points per game. Sophomore forward Roy Fisher also contributes 11.3 points and 5.7 rebounds per contest.

Oregon State is ranked 26th on this week's Associated Press poll, and continues to rank high on the USA Today basketball computer ratings.

OSU hopes to keep shooting the ball in an impressive manner. "In the last three games, all on the road, we have averaged over 60 percent shooting and we haven't been doing that up until this point in time," Miller said.

Gary Payton continues to be on a rampage for the Beavers, as he scored 31 points and had 13 assists against Washington. "Certainly Gary enhances the play of the other players," Miller said. "I don't know of anyone in the United States who can pass to his teammates better than Gary Payton."

Sophomore Bob Cavell had arthroscopic surgery last Tuesday on his left knee, as a result of an injury suffered in the OSU-Arizona State game. No serious damage was found and he should be back in action by the Oregon series next week.

There are still tickets remaining to tonight's game, which will be televised live over KEZI (channel 9) in Eugene and KPTV (channel 12) in Portland.

Weekends  
at the  
Valley



Serving  
Breakfast, Lunch,  
and Dinner

Sunday Brunch  
9:00 a.m. - 2:00 p.m.

136 SW 3rd Downtown 752-0933

**CANCER** American Cancer  
**CAN BE BEAT** Society



## The Attitude

- Clothes with an attitude

## Beasley's Ice Cream

- Everyday is an ice cream day

## Benetton

- Quality clothes, both fun and classic

## Candy Shoppe

- Chocolates, candy & stuffed animals

## Class Reunion

- Visit our sports lounge

## Ear Expressions

- Earrings, fashion jewelry & gift items

## Expertees

- Custom screen printing & group discounts

## Eyeglass Express

- Affordable, quality, fashion eyewear

## Happy Cooker

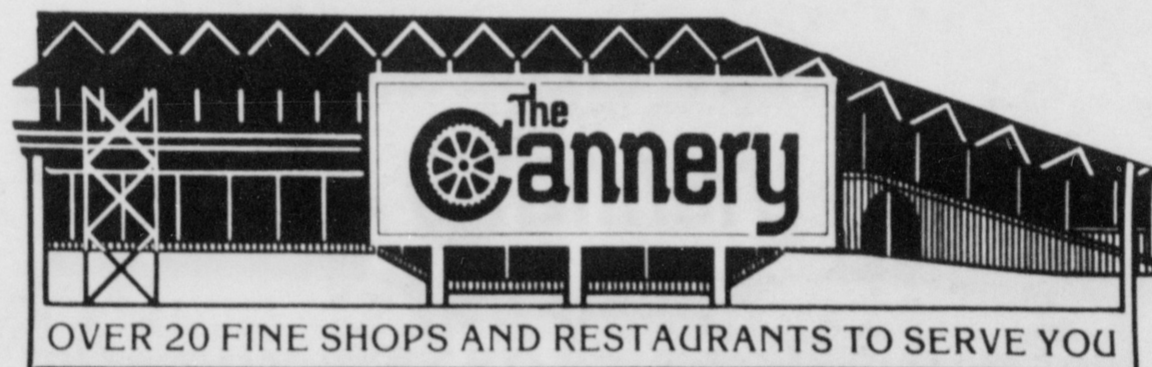
- Everything for your kitchen and more

## Jean Machine

- The denim store

## La Femme

- quality lingerie underdressings



## Mall Hours

Mon.-Fri. 10am to 9pm  
Sat.-10am to 6pm  
Sun.-Noon to 5pm

## Mary's Flowers

- Flowers for every occasion

## Musicland

- We've got what's hot

## Paper Traders

- Unusual cards and gifts

## Pathfinder Travel

- Low air fare, Student travel, Amtrack, Youth hostel, Worldwide rail, Cruises

## Potions and Lotions

- Men's & Women's custom scent shop

## R. Gretz Goldsmith

- Goldsmiths, Platinumsmiths

## Rube's Deli

- Restaurant, wineshop, catering

## Tani & Co.

- Hair, Nails, Waxing, Skin care, Cosmetics

## Waldenbooks

- America finds it at Waldenbooks

Sophomore sets example for squad

## Brantley's consistency pays off for Beavers

By MIKE BARRETT  
for the Barometer

When he was told that he wasn't capable of making it at his hometown college, Will Brantley decided to accept Oregon State's offer to attend school in Corvallis.

Oddly enough, the school that wouldn't give Brantley a scholarship received their second worst loss in history Saturday, when Brantley and the Beavers walked into Seattle and slapped a muzzle on the Huskies in their own kennel.

"They were interested in me mid-season of my senior year in high school. Then at a basketball camp one of the assistant coaches told me that he didn't think I was capable of making it at Washington," Brantley said.

"It made me happy to go to my hometown and pick up a victory like we did. Now I can go home this summer with my head up."

After almost two seasons with the Beavers, last year making the Pac-10 all-freshman team and this year being a key man for the team averaging 33.3 minutes a game, Brantley has definitely found his place in the OSU line-up.

This year, Brantley has started 17 of 22 games and, next to Gary Payton, has been the Beaver's most consistent player. After the flu forced him out of the USC game and limited his playing time against UCLA in the recent trip to Los Angeles, Brantley has bounced back and has scored in double figures in the four games since. He has hit 12 of his last 15 shots and is a perfect 5-5 from the free-throw line. He is averaging 10.5 points and 3.6 rebounds going into tonight's game against Cal.

*"I don't necessarily feel it's my place to be critical of others when we're on the court. Eventually, I'd consider myself a leader on this team by example."*

—Will Brantley

Often being dubbed as reserved or soft-spoken, Brantley is just waiting for his moment in the leadership role.

"There is no doubt who is the leader right now and Gary's (Payton) doing a great job of that. I'm not a strong verbal type. I don't necessarily feel it's my place to be critical of others when we're on the court. Eventually, I'd consider myself a leader on this team by example," Brantley said.

Brantley attended Roosevelt High School in Seattle. He averaged 16 points, nine rebounds and seven assists for head coach Ben Snowden, earning him All-Seattle honors. Roosevelt High finished the 1986-87 season with a 25-4 mark and won 41 games in Brantley's two years as a starter.

"I don't know that I've ever coached a kid with his quickness," Snowden said. "He can get a rebound and release a shot so quickly. His strengths are definitely ahead of him."

But it was Brantley's father, Willie Sandifer, who is credited with bringing him to basketball. But Brantley wasn't excited with his enrollment in fifth grade YMCA basketball.

"I wasn't enthusiastic at first, but I really grew to enjoy it. I really didn't dedicate myself to it until my junior year in high school by staying after practice and working at it," Brantley said.

This year, he knows what his role is and how it will increase in the future.

*"(Will) is definitely going to be a key factor in the future. He is going to be an integral part of both the offense and defense."*

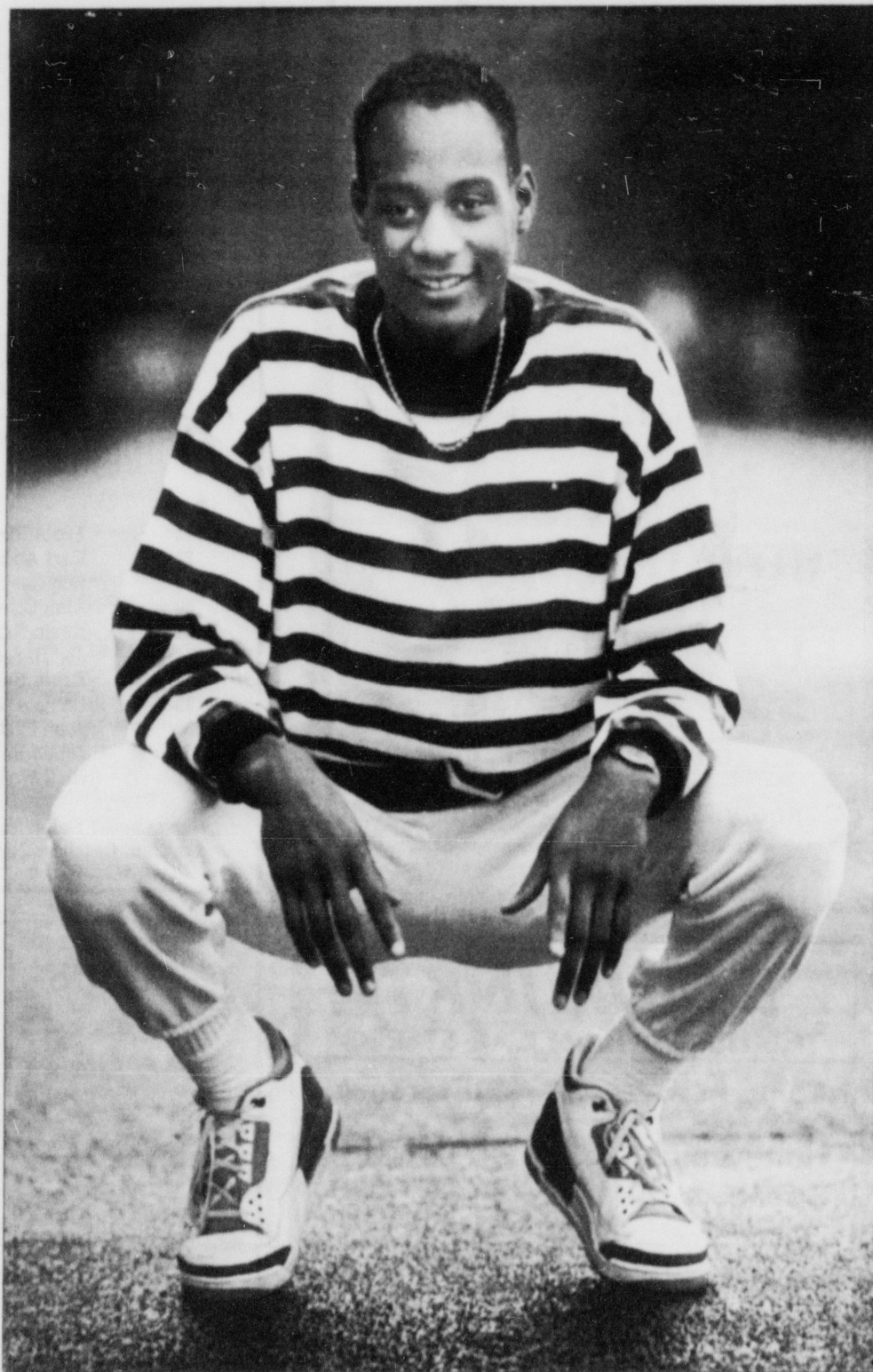
—Jimmy Anderson

"Right now I am a student, I'm just being taught. I look forward to next year. With Eric (Knox) gone I will be depended upon to take some of the pressure off Gary and handle the ball a little more," Brantley said.

It's not only Brantley that sees his role increasing in the future. Next year's head coach Jimmy Anderson foresees Brantley as an important asset to the Beavers in the coming two years.

"He is definitely going to be a key factor in the future," Anderson said. "He is going to be an integral part of both the offense and defense. I hope he improves as much from his sophomore to junior year as he did from his freshman to sophomore year," Anderson said.

At only 20, Brantley has a long way to go before learning his true potential as a college player. But not even being through with his second season of college ball, one thing is obvious, Will Brantley is not only capable of making it as a college player, but is a big reason the Beavers are where they are this season. OSU fans can look forward to watching Brantley over the next two years, as he grows as a player and assumes a leadership role.



GARY L. WEST/The Daily Barometer

Sophomore forward Will Brantley is down-to-earth about his roll on the Orange Express basketball squad. Brantley has been a key figure in the Beavers' success in Coach Ralph Miller's final season and is expected to be a leader on next year's team under Coach Jimmy Anderson.

"Original Since 1945"

*D & B Automotive  
& Radiator Repair*

128 N.W. 2nd ST.  
PHONE 753-7011

Jim Otter, Owner

1  
HOUR  
PHOTO

**WE DO IT!**

Quality Color  
Processing

- 4x6 Gloss, 3½x5 & 5x7 Matte
- Black & white next day service
- E-6 Slide
- Passport pictures
- Graduation portraits

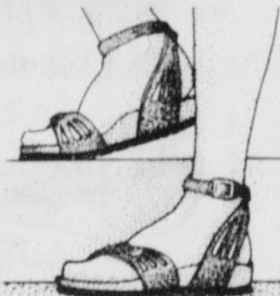
**RAINBOW**  
IMAGE CENTERS

2465 NW Monroe (Across from Kinko's) 754-0432



**Birkenstock**

Your Feet  
Never Felt  
This Good



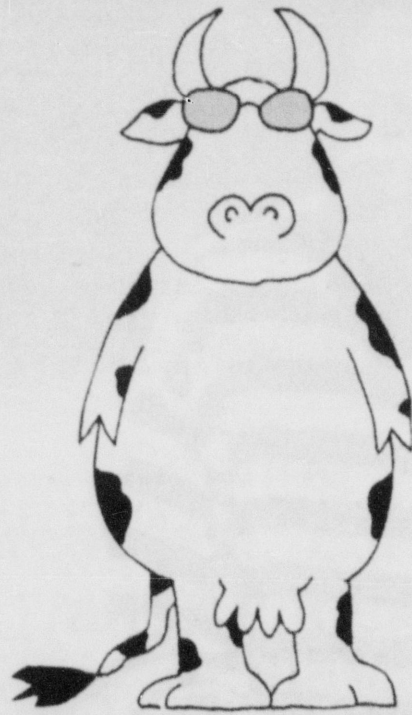
**FOOTWISE**

703 NW 11th  
757-0875

# PAPER TRADERS II

has

## Udderly Cool Cards



...and much, much, more!!

Cannery Mall

754-8088



## Oregon State Beavers

### Probable Starters

No.	Name	Pos.	Hgt.	Wgt.	Class	Hometown
24	Earl Martin	F	6-5	175	Jr.	Los Angeles, CA
25	Will Brantley	F	6-4	160	So.	Seattle, WA
43	Scott Haskin	C	6-10	215	Fr.	Beaumont, CA
15	Eric Knox	G	6-2	210	Sr.	Inglewood, CA
20	Gary Payton	G	6-3	175	Jr.	Oakland, CA

### Bench

12	Teo Alibegovic	C	6-8	215	Fr.	Ljubljana, Yug.
22	Karl Anderson	F	6-7	220	So.	Chicago, IL
4	Bob Cavell	F	6-5	190	So.	Salem, OR
40	Alan Celestine	G	6-1	195	So.	Ridgecrest, CA
11	Kevin Grant	G	6-2	170	So.	Beaverton, OR
34	Joe Harge	F	6-7	190	Jr.	Albuquerque, NM
14	Kevin Harris	G	6-3	180	Fr.	Aloha, OR
33	Lamont McIntosh	F	6-6	215	Jr.	Omaha, NE
55	John Patton	F	6-6	195	So.	Lacey, WA
53	Johan Reinalda	C	7-1	290	Sr.	Akkrum, Neth.
31	Rich Wold	G	6-1	160	Jr.	Corvallis, OR

Head Coach: Ralph Miller (Kansas, 1942)

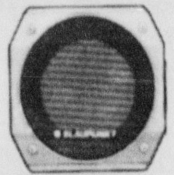
Assistant Coaches: Jim Anderson, Fred Boyd, Andy McClouskey

## BLAUPUNKT

THE ULTIMATE IN CAR STEREO

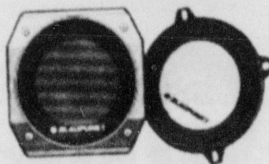
Come In To Hear The Difference

Honeycomb Speakers



HC 1660  
6.5 IN  
60 WATTS

HC 1340  
5 IN  
40 WATTS



HC 1030  
4 IN  
30 WATTS

6.5 IN... \$80<sup>00</sup>

5 IN... \$75<sup>00</sup>

4 IN... \$70<sup>00</sup>

FINANCING AVAILABLE

Custom Installation With  
Lifetime Warranty

**Spectrum**

AUTOSOUND  
& SECURITY

Open:  
Mon.-Sat.  
10am-6pm

Corvallis  
754-7043  
2206 NW 9th St.

We Sell Theatre  
& Concert  
Tickets

Albany  
928-0349  
2865 Santiam Hwy, SE

## 1988-89 Oregon State Basketball Statistics

Record: 14-5

Player	FG	FGA	FT	FTA	PTS	REB	AST	TO	BLK	STL	MIN
Payton	7.0	13.7	3.1	4.9	19.9	4.3	8.5	3.1	.7	3.1	37.7
Knox	5.4	11.2	2.8	4.1	15.5	3.9	4.2	1.0	.1	1.6	31.7
Alibegovic	4.4	9.4	1.3	1.7	10.7	2.5	1.2	1.5	.2	.7	26.1
Brantley	4.5	9.0	1.5	2.2	10.5	3.6	3.0	1.7	.8	1.6	33.3
Martin	3.6	7.0	1.9	2.5	9.0	4.2	1.7	1.1	.4	1.9	29.9
McIntosh	2.3	4.0	1.5	2.1	6.0	3.5	.9	1.1	.1	1.1	22.4
Haskin	1.4	2.7	.6	1.2	3.3	2.7	.2	.9	.5	.2	12.9
Reinalda	1.2	2.2	.3	.8	2.7	1.0	.0	.2	.2	.0	4.7
Cavell	.9	2.1	.3	.4	2.5	.6	.5	.6	.0	.2	6.8
Celestine	.7	1.5	.1	.2	1.6	.9	.7	.4	.1	.6	6.8
Grant	.6	.8	.0	.0	1.4	.8	.0	.0	.0	.2	3.2
Wold	.0	.0	1.0	2.0	1.0	.0	1.0	1.0	.0	1.0	2.0
Harge	.1	.5	.0	.1	.2	.7	.1	.2	.1	.1	3.1
OSU	29.4	59.0	12.7	18.9	76.9	28.1	20.1	11.0	2.9	10.7	-
Opponents	25.2	51.1	14.2	20.4	68.0	35.0	14.7	19.7	2.4	4.8	-

## Pacific-10 Standings

	W	L	PCT.	W	L	PCT.
Arizona Wildcats	14	1	.933	20	3	.870
Stanford Cardinal	12	3	.800	21	5	.808
Oregon State Beavers	10	4	.714	18	5	.783
UCLA Bruins	10	4	.714	16	7	.696
California Bears	8	6	.571	17	9	.654
Washington Huskies	6	9	.400	10	14	.417
Arizona State Sun Devils	5	10	.333	12	12	.500
Washington State Cougars	3	11	.214	8	15	.348
Oregon Ducks	3	11	.214	8	16	.333
USC Trojans	1	13	.071	8	18	.307





## California Golden Bears

### Probable Starters

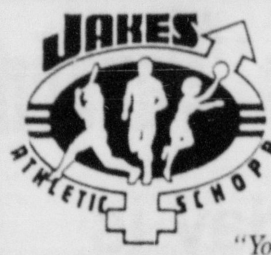
No.	Name	Pos.	Hgt.	Wgt.	Class	Hometown
44	Leonard Taylor	F	6-8	220	Sr.	Inglewood, CA
40	Roy Fisher	F	6-7	200	So.	Renton, WA
34	Andre Reyes	C	6-11	220	So.	Manning, SC
21	Keith Smith	G	6-4	170	Jr.	Portland, OR
24	Ryan Drew	G	6-2	180	So.	Seattle, WA

### Bench

3	Eric McDonough	F	6-9	190	Fr.	Danville, CA
10	Matt Beeuwsaert	F	6-6	210	Sr.	Santa Ana, CA
14	Sean Harrell	G	5-11	170	So.	Santa Cruz, CA
15	Brian Hedrick	F	6-8	210	Fr.	Walnut, CA
23	Bill Elleby	G	6-3	175	Fr.	Seattle, WA
25	Rich Brashears	G	6-4	185	So.	San Jose, CA
30	Bryant Walton	G	6-4	180	Jr.	Santa Ana, CA
32	Hartmut Ortmann	F	6-8	235	Sr.	West Germany
35	Rich Branham	F	6-5	210	Fr.	Arleta, CA
41	Andrew Brigham	F	6-6	200	So.	San Francisco, CA

Head Coach: Lou Campanelli (Montclair State, 1960)

Assistants: Gary Colson, Jeff Wulbrun, Bill Treseler, Jim Saia.



933 NW CIRCLE  
across from Payless  
752-JAKE

Mon-Fri 9-7  
Sat 9-5  
Sun 1-5

"Your Professionals in Athletics"

## JAKE'S SPOTLIGHT: OSU MENS' BASKETBALL 18-5

This week the men are at home to take on fifth place California, and second place Stanford. Thursday's game is a must win situation for the Beavers if they wish to climb into second place. Saturday the men can make that move to second by beating the Todd Lichti led Cardinals of Stanford.

JAKE'S would like to salute the men, the students, and their dads for furthering O.S.U.'s winning tradition.

## BRING IN DAD FOR

# 10% Off ALL MERCHANDISE

\*must have valid OSU ID



933 NW Circle  
across from Payless  
Mon-Fri, 9-7  
Sat 9-5  
Sun 1-5



## Stanford Cardinal

### Probable Starters

No.	Name	Pos.	Hgt.	Wgt.	Class	Hometown
30	Andrew Vlahov	F	6-7	225	So.	Perth, Australia
32	Howard Wright	F	6-8	235	Sr.	San Diego, CA
55	Eric Reveno	C	6-8	250	Sr.	Atherton, CA
42	Todd Lichti	G	6-4	205	Sr.	Concord, CA
21	Terry Taylor	G	6-2	180	Sr.	Aurora, CO

### Bench

11	John Patrick	G	6-4	180	So.	Vienna, VA
14	Oliver Cunningham	G	6-4	188	Jr.	Diamond Bar, CA
15	Kenny Ammand	G	6-3	185	Jr.	Huntington Beach, CA
20	Scott Meinert	G	6-2	170	Fr.	Salem, OR
22	Peter Dukes	G	6-4	180	Fr.	Seattle, WA
23	Bryan McSweeney	F	6-6	195	Sr.	Dana Point, CA
31	Adam Keefe	F	6-9	230	Fr.	Irvine, CA
34	Deshon Wingate	F	6-7	195	So.	Austin, TX
44	Paul Garrett	F	6-9	230	Fr.	Pacific Palisades, CA
45	Derek Burton	C	6-10	235	Jr.	Gilroy, CA
50	Lang Meyer	C	6-9	245	So.	The Woodlands, TX

Head Coach: Mike Montgomery (Cal State Long Beach, 1968)

Assistant Coaches: Barry Collier, Tom Crowley, Doug Oliver

Come  
Visit  
Us!



Kings Circle  
Mall  
Next to  
Albertsons

## Mexican Restaurante

Spice up your cool nights with our new Steak Picado Burrito marinated Sirloin Beef Strips, quick fried with Anaheim Chiles, Tomatoes, Onions & Fresh Garlic caressed by our refried beans and surrounded by our famous soft hand-made flour tortillas....

Now...Quickly....

Bring this coupon in for

# 50¢ OFF

Regular Price

## Steak Picado Burrito

LaCantina...

where the tradition continues...

Valid with coupon only.

Good for to go orders too.

Expires 3-9-89

752-1818

# Murphy's Tavern

Thursday is  
Import Night

now with

## LIVE MUSIC

Following the OSU  
basketball game.

Come on in  
after the  
game!!



Open for lunch  
and dinner too.

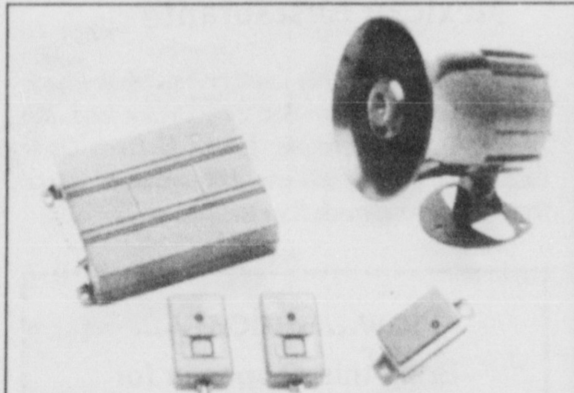
Also— Live Music  
Friday & Saturday

2740 SW 3rd Corvallis 752-3509

## Thieves Beware!

### VIPER 300

VIPER 300 REMOTE CONTROL  
ALARM SYSTEM



- 2 remote transmitters to arm/disarm up to 100 feet
- Instant response for attempted entry
- Status LED
- Shock sensor for wheel and glass protection
- High-output 120db siren
- Panic features allows user to remotely set off alarm

Reg. \$279 **Now \$19888** installed

- Repair Service ■ Professional Car Stereo Installation

**PACIFIC**  
ELECTRONICS

1225 E. Pacific Blvd., Albany - 926-5900  
Visit our CD # Record # Tape Dept.

# OPPONENT

## Stopping Leonard inside is key to caging California Bears

By MATT WEBB  
of the Barometer

When Lou Campanelli walked through the front doors of Harmon Arena at midnight on Oct. 15, for the official start of California's 1988-89 basketball season, he had to pinch himself to make sure he hadn't lapsed into a late-night dream.

After all, it was only a year ago that Campanelli suffered through a season that seemed like one long nightmare. This time, however, he wore a smile, not a grimace, on his face.

What he found was a Cal basketball team that entered the 1988-89 season with 10 returning lettermen, 14 players on scholarship and 93.2 percent of its scoring returning from last year.

"On paper we'll have good depth at all spots and that should make California basketball fun again, not only for the coaches and players, but our fans as well," Campanelli said. "We paid our dues last year, but that's over now. We feel like we'll be able to compete against anybody on our schedule this season and it's probably the best schedule Cal has played in many years. I believe it's very realistic to say that our team will compete for a post-season tournament berth."

Cal's chances for a post-season berth are realistic all right, 8-6 in league and 17-9 overall, but the berth will probably be NIT, unless the NCAA invites five Pac-10 teams, which is not impossible.

*"Leonard is such a versatile player. He contributes in so many other ways besides just scoring and rebounding."*

—Lou Campanelli

What Cal does have in their favor is senior power forward Leonard Taylor, who has missed most of the last two seasons with injuries. After getting medical approval before the start of the season, Taylor set out to make up for lost time and has become one of the most feared power forwards in the Pac-10, averaging 19.5 points per game, while picking up 8.3 rebounds.

"Leonard is such a versatile player. He contributes in so many other ways besides just scoring and rebounding," said Campanelli, but the Bears are still happy with his points and rebounds.

The Beavers will counter inside with 6-foot-10 center Scott Haskin. Haskin, the freshman from Beaumont, Calif., got his first OSU career start against Arizona State and has now started four games in a row. Haskin matched a career high point output with nine versus ASU, but has since been limited in points versus Marquette, and the Washington schools.

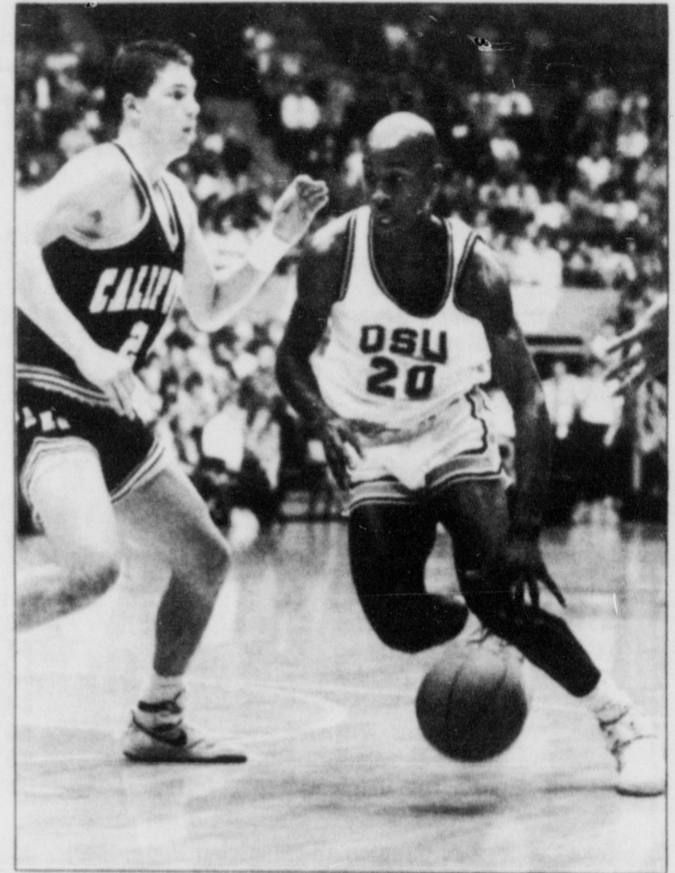
Haskin has been troubled with foul problems, which will likely be the case tonight, going up against the established Leonard. If that is the case, Earl Martin would likely cover Leonard. Martin has appeared to have gotten out of a shooting slump that hampered his play for a two-week period. He started versus WSU and Washington and played a strong game in each contest, hitting three-for-four from the field versus WSU and three-for-six in the Husky game.

Consistency has been a problem for Martin, but he has responded well on three other occasions this year when he has not started. On each occasion he has come off the bench in that particular game to play his best basketball of the season.

At the guard position Cal is led by 6-foot-4 junior Keith Smith, who is originally from Portland. Smith was named the team MVP last year averaging 12.9 points and 3.9 assists. This year, Smith is again a consistent scorer averaging 13.6 points per game, while also collecting 2.8 rebounds per contest.

"I can't say enough good things about Keith Smith. He's a team player with outstanding ability. The other players respect him and he is very coachable. We just saw the tip of the iceberg towards the end of last season. Keith is having a great season, and will be even better as a senior," said Campanelli.

The Beavers, however, have the best guard combination in



GARY L. WEST/The Daily Barometer

Junior Gary Payton works the ball inside against California earlier this season.

the league in Eric Knox and Gary Payton. Knox is currently on a big scoring roll, coming off a sensational performance against Washington in which he scored 22 points and dished off a career high of 12 assists, topping his previous high of 10, plus he had six rebounds and five steals.

Eric led the Beavers' scoring with 18 points at WSU last Thursday, this after coming off the best scoring game of his career, a 28-point performance versus Marquette, including a career high of six field goals made from the three-point range. In each of the 10 straight games that Knox has started in, he has responded by scoring in double figures, while only being held scoreless in four of his 115 career games as a Beaver.

Gary Payton, "Mr. Everything" to OSU, is now the new record holder at OSU for three-point field goals made in a season with 63, and for attempts with 153. In the assist column, Payton is on another record setting pace, but this pace will not only break a OSU record, but also a national one. Payton is on pace to break the career assist total of 894 held by Andre LaFleur of Northeastern.

Defensively, Payton has 201 career steals at OSU and is close to the Beavers' career record of 205 held by Ray Blume (1978-81). Payton is currently ranked 10th in the nation in steals this season, averaging 3.2 steals per game.

California holds a close 46-43 series edge over OSU in the 89-game series. The Beavers currently have a three-game winning streak over the Golden Bears. The last time the two teams played, Jan. 26 in Berkeley, OSU won a squeaker in overtime, 69-64. Last year the Beavers commanded a one-sided 82-46 victory at Gill Coliseum and a 65-54 decision at Harmon Arena.

So, with Cal still sulking over the Beaver's last victory, you can believe the Golden Bears will come out fighting tonight, as it's all on the line for both schools. Cal desperately needs a win at Gill Coliseum tonight to stay in consideration for a berth, while the Beavers can ill afford to lose any more games themselves, in their quest of staying in the top three of the Pac-10 standings.

## PERFORM A DEATH-DEFYING ACT.



### Use a condom.

If you're not careful, AIDS might kill you. It's a disease with no cure and no survivors. But there is a small consolation. A condom. It could save your life. If anything, it could help you sleep a lot easier.

# Beavers look to upset Cardinal Saturday



GARY L. WEST/The Daily Barometer

Junior Earl Martin fights for a rebound against Stanford earlier this season.

By MIKE BARRETT  
for the Barometer

After being embarrassed at Stanford earlier this season, the Beavers hope to avenge that loss Saturday when they host the Cardinal in a 3 p.m. Dad's Weekend clash in Gill Coliseum. If all goes well for the Beavers this weekend, OSU will move into a second-place Pac-10 tie with Stanford.

In December, the Beavers went into Maples Pavilion and faced a greatly improved Stanford team. Trailing by only nine points at the half, the Cardinal came out smoking in the second half and buried the Beavers by 28. In that game, All-American Todd Lichti had 22 points, with teammate Eric Reveno grabbing 14 boards.

This time around the Beavers hope to keep Lichti in-check and control the Stanford offensive attack. Last year at Gill, the Beaver defense did keep Lichti under control, but it cost them. With all the concentration on Lichti, it left the door open for other Stanford players. Greg Butler and Howard Wright answered with a combined total of 46 points. That was too much for the Express as they were stopped in their tracks, 78-65.

"We've got to contain him," said Beaver guard Gary Payton. "Make him do things he doesn't want to do."

For the Cardinal, they couldn't have picked a worse time to come to Corvallis. The Orange Express has won nine of their last 10 games and 14 of their last 16. After an 0-2 start in the Pac-10, the Beavers are 10-2. Their four losses in conference are to Arizona twice, Stanford and UCLA. Pretty good, considering Arizona has been ranked number one this year, Stanford 14th and UCLA 20th.

Stanford has had a banner year to this point, coming into Corvallis 20-5 overall and 11-3 in Pac-10 play. Last season, the team chalked up a 21-12 record, it's first 20-win season in 46 years. With 12 lettermen and four starters back, it seemed inevitable that the Cardinal would be challenging for the top spot in the Pac-10 and national recognition as well. While they are still two and one-half games behind Arizona coming into this week, they have all but clinched a berth in the NCAA post-season tournament.

Here is a look at the match-ups for Saturday's game.

**Forwards:** Stanford hits hard down-low with an All-American candidate 6-8 senior Howard Wright at one forward and 6-7 sophomore Andrew Vlahov. The veteran Wright averages an impressive 14.4 point and seven rebounds per game, while Vlahov dumps in six points a game and grabs 3.9 rebounds.

Starting for the Beavers at the forward spots will be Earl Martin and Will Brantley. Both players have put up solid numbers on the year, Martin is averaging nine points and 4.2 rebounds, while Brantley averages 10.5 points and 3.6 boards a game. Lamont McIntosh, recovering from a cheap, playground-style elbow thrown in Seattle, will not start but will play an important role off the bench.

**Center:** Starting for Stanford at the pivot will be 6-8 senior Eric Reveno. After not playing last year, Reveno has made a gallant comeback this season. He is averaging 9.8 points and 5.1 rebounds a game, and is a key if the Cardinal is to have a productive game offensively.

Likely to be starting his sixth game in a row, center Scott Haskin has been a very pleasant surprise for the Express this season. Ironically, it was at Stanford in December when Coach Ralph Miller brought Haskin off the bench, thus ending the prospect of his previously planned redshirt year. Haskin is averaging 3.3 points and collects 2.7 rebounds a game, but more important to OSU than scoring is merely his presence on the floor. At 6-10, and with long arm, he is a difficult obstacle to shoot around.

**Guards:** For the Cardinal, nothing needs to be said about Todd Lichti that hasn't already been said. He is their "Mr. Everything," averaging 20.8 points and 4.8 rebounds a game. At the other guard is unsung senior Terry Taylor. Averaging eight points and 1.5 rebounds a contest, Taylor is quiet but a key performer for the Stanford offense.

Stanford will have its work cut-out for itself guarding what is possibly the greatest guard combo in Beaver history. Coming off a game in which the two OSU guards combined for 25 assists, they are the fuel for the Orange Express. Gary Payton, averaging 19.9 points and 8.5 assists, and Eric Knox, averaging 15.5 points and 4.2 assists, are the keys to the Beavers' offense and defense.

## GRADUATE STUDENTS & SENIORS

John & Phil's Toyota and Toyota Motor Sales, U.S.A. are pleased to offer our-

### Special Financing Program

#### Purchase Program

There's no better way to launch your new career than behind the wheel of a new Toyota car or truck. And Toyota makes it easy for college graduates with career-oriented jobs to do just that.

Our Purchase Program gives you the opportunity to buy a new Toyota with no money down, provided that the total amount financed is no more than the Toyota manufacturer's suggested retail price plus the cost of factory-installed options and required tax and license fees. So test drive your favorite Toyota model - choose from our line of cars and trucks for the Toyota that's just right for you and we'll arrange convenient financing terms with easy monthly payments and no money down.\*

#### Leasing Program

Lower monthly payments on a new Toyota can be yours with our leasing program. In fact, when you lease, your monthly payments can be lower than if you purchased your car or truck outright.

Our special leasing program applies to all Toyota cars and trucks, and in most cases, there's no security deposit; however, proof of insurability is required. Leasing has special advantages, and they may apply to you. And once your lease is up, you have the option of buying your Toyota at that time. It's a great way to drive the Toyota of your dreams.



Camry 4-Door Sedan

#### Here's How You Qualify.

We've made it easy to qualify for Toyota financing. Just meet these four basic conditions.

1 Graduate from a four-year college or graduate school within the next six months. And you have one year from receipt of your degree to take advantage of the program.

2 Have a verifiable offer for a job that will begin within 120 days of your purchase with a salary sufficient to cover ordinary living expenses and vehicle payments.

3 Have proof of insurability.

4 Have no negative credit history.

**JOHN & PHIL'S TOYOTA**  
800 NW 5th, Corvallis 754-1515

## For Life Insurance, check with State Farm.

- Permanent Life •Term Life
- Retirement, pension and group plans.

Call: **DAVID SAMUEL**  
Agent

551 Northwest Monroe Street  
P.O. Box 1085  
Corvallis, Oregon 97339  
752-3465

Like a good neighbor  
State Farm is there



State Farm Life Insurance Company  
Home Office: Bloomington, Illinois



PASS ALONG  
AN HEIRLOOM MORE  
VALUABLE THAN GOLD.

#### LIFE.

When you make a bequest to the American Heart Association, you're passing along a precious legacy. The gift of life. That's because your contribution supports research that could save your descendants from America's number one killer.

To learn more about the Planned Giving Program, call us today. It's the first step in making a memory that lasts beyond a lifetime.

THE AMERICAN HEART  
ASSOCIATION  
MEMORIAL PROGRAM

American Heart  
Association  
in Oregon  
1-800-452-9445

This space provided as a public service.

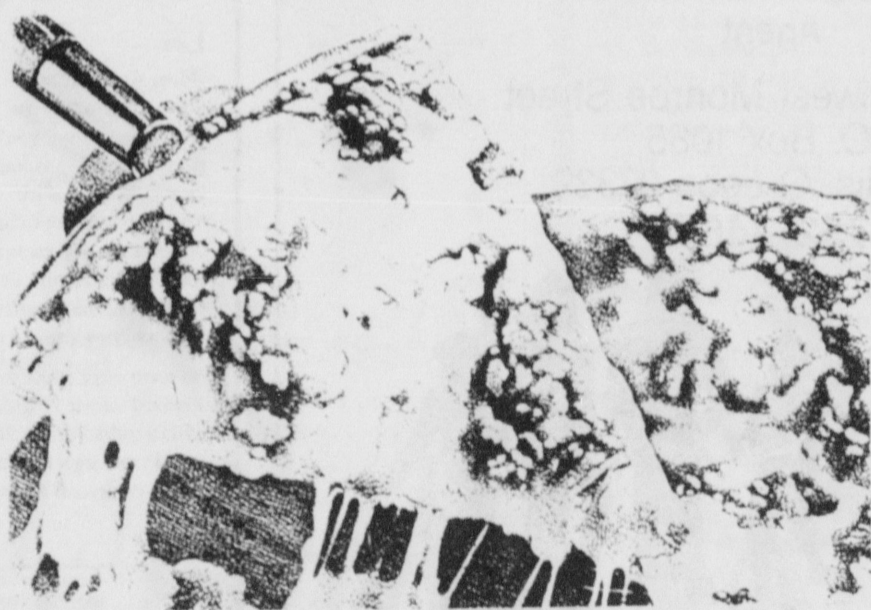
THE BEST TASTE AROUND  
**DELIVERS!**  
**CIRELLO'S**  
*pizza*

*-fresh hand-spun dough-*  
 Thinner crust available upon request. Baked or U-Bake  
 Pizza to go 25¢ extra.

TOPPINGS		Small	Medium	Large
Pepperoni	MOZZARELLA:	\$5.55	\$6.95	\$8.75
Salami	1 Topping	6.30	7.85	9.85
Canadian Style Bacon	2 Topping	7.05	8.75	10.85
Linguica	3 Topping	7.80	9.65	11.85
Italian Sausage	Each Additional Topping	.75	.90	1.00

**POPULAR FAVORITES**

Hawaiian - Canadian Style Bacon and Pineapple.	Sm. 6.95 Med. 8.6 Lg. 10.55	Vegie Special - mushroom, onion, bell pepper, olive, tomato.	Sm. 8.40 Med. 10.90 Lg. 12.45
Wiley's Delight - pepperoni, salami, mushroom, Italian sausage.	Sm. 8.35 Med. 10.30 Lg. 12.40	Cirello's Special - pepperoni, onion, Canadian bacon, mushroom, bell pepper, olive, sausage.	Sm. 9.50 Med. 11.95 Lg. 13.95
Sicilian - pepperoni, mushroom, onion, chopped garlic, olive oil.	Sm. 8.80 Med. 10.80 Lg. 13.05	"The Mr. C" - choose any five toppings, and pay for only four.	Sm. 8.55 Med. 10.55 Lg. 12.85
Tobe's 50/50	1/2 Canadian bacon, bell pepper, tomato 1/2 pepperoni, bell pepper, pineapple		Sm. 7.50 Med. 9.40 Lg. 11.60



919 NW Circle, in Circle Center, Corvallis  
 754-9199  
 Delivery 7 nights a week



**LUNCH SPECIALS**

Pizza Square with 2 toppings  
 Sm. Salad **\$2.95** Sm. Soft Drink

Coupon Expires March 16, 1989.  
 1 coupon per visit, not valid with other discounts.



**MONDAY NITE SPECIAL**

Large Pizza for Medium Price  
 Every Monday



**1/2 Price PITCHER** W/ PIZZA PURCHASE

Of your favorite beverage  
 (In store only)

1 coupon per visit. Coupon Expires March 16, 1989.



**\$2.00 Off a Large** (16-inch)  
**\$1.25 Off a Medium** (14-inch)  
**\$1.00 Off a Small** (12-inch)  
**ANY PIZZA**

Coupon Expires March 16, 1989  
 1 coupon per visit, not valid with other discounts.



**\$2.00 Off a Large** (16-inch)  
**\$1.00 Off a Medium** (14-inch)  
**75¢ Off a Small** (12-inch)  
**WILEY'S DELIGHT**  
 Pepperoni, salami, mushroom, sausage

Coupon Expires March 16, 1989  
 1 coupon per visit, not valid with other discounts.



**\$1.00 Off**  
**Any Size Pizza To Go**  
 We also deliver!

Coupon Expires March 16, 1989  
 1 coupon per visit, not valid with other discounts.



**"THE MR. C"**  
**\$1.00 Off**  
**Any Size 5-topping Pizza**

Coupon Expires March 16, 1989  
 1 coupon per visit, not valid with other discounts.