

Handwritten text in a non-Latin script, likely Georgian, arranged in vertical columns. The text is dark and somewhat faded.

Handwritten text in a non-Latin script, likely Georgian, at the top right of the page.

Handwritten text in a non-Latin script, likely Georgian, below the top right text.

Handwritten text in a non-Latin script, likely Georgian, in red ink, located in the upper right quadrant.

Handwritten text in a non-Latin script, likely Georgian, located in the middle of the page.



D50 Illuminant, 2 degree observer

Density

0.04 0.09 0.15 0.22 0.36 0.51

Golden

ስምጥቱ ተገርግጥ ይህ  
 የሰው ልጅ ገብረ  
 ጊዮርጊስ ገብረ ገብረ  
 የሰው ልጅ ገብረ ገብረ  
 ደግሞ ገብረ ገብረ  
 ገብረ ገብረ ገብረ  
 ገብረ ገብረ ገብረ  
 ገብረ ገብረ ገብረ  
 ገብረ ገብረ ገብረ



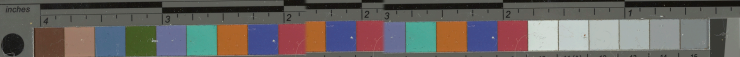
inches		4 3 2 1 0														
		4 3 2 1 0														
		1 2 3 4 5 6 7 8 9 10 11(A) 12 13 14 15														
L*		39.12	65.43	49.87	44.26	55.56	70.82	63.51	39.92	52.24	97.06	92.02	87.34	82.74	72.06	62.17
a*		13.24	18.11	-4.34	-13.80	9.82	-33.43	34.26	11.81	48.55	-0.42	-0.60	-0.75	-1.06	-1.19	-1.07
b*		15.07	18.72	-22.29	22.95	-24.49	-0.35	59.60	-46.07	18.51	1.13	0.23	0.21	0.43	0.28	0.19
D50 Illuminant, 2 degree observer		Density → 0.04 0.09 0.15 0.22 0.38 0.51														

ተዓለቡ ተከርስቲ ያን፡ ዛ  
 ተከላለተ፡ ምዕረረ፡ ከብሐ  
 ት፡ ሃይማኖት፡ ጉዳ፡ መንፈ  
 ከ፡ ሀብተ፡ ጸጋ፡ ወንጌል፡ ለክ  
 ጸጋን፡ ገዢ ይከ፡ ወከ፡ ሃዳርር፡  
 ለዝሉ፡ ብክል፡ ግብ፡ ፍኮ  
 ተማሰል፡ ክምሰሰ፡ መገማሥ  
 ተክ፡ ቦኩ፡ በእንተክክ፡ ወበእ  
 ገተ፡ ፍቶር፡ ወልዩ  
 ከሐግዚክ፡ እን፡ እያ፡ ሱክርስ  
 ፍስ፡ ዘቦተ፡ ለክ፡ ስብ፡ ሐት፡  
 ወእ፡ ጊዝ፡ ለግ ለመ፡ ግብ፡  
**ሊጠን፡ ወከዕብ፡ ፍከተብተ፡ ሐ፡**  
 ዘክሱ፡ ዩከ፡ ግዝ፡ እግዚአብ

ሐር፡ ክብ፡ ለእግዚአብ፡ ወመፍ፡ ኃ፡ ጊን፡  
 ኢየሱስ፡ ዘርከፍከ፡ ክንዝ፡ ነክከ፡ ግ  
 ፍ፡ እከመ፡ ግብ፡ ገ፡ በን፡ ጌላ፡ ሐ፡ ት፡  
 ወአብ፡ ጸሐ፡ ነ፡ ስም፡ ዩ፡ ልመ፡ ት፡ ወከ  
 ተ፡ ብርሃን፡ ክመስ፡ ስፍ፡ ወስተ፡ ዘከ  
 ይግሰ፡ ጸሐ፡ ግሥኢ፡ ዩከ፡ ስምር፡ ወከተ፡  
 ክከምር፡ እማ፡ ነ፡ ክሙ፡ ሐ፡ ኃ፡ ስልተ  
 ፍ፡ ስከሱ፡ ስላም፡ ወፍ፡ ግ፡ ጊን፡ ከዩ  
 ኒ፡ ነ፡ ሃሱ፡ ወፍ፡ ስ፡ ጸር፡ ስ፡ ግዞ፡ በኃይ  
 ለ፡ መላክከተሁ፡ ዘላከሱ፡ ግብ፡ ሐ፡  
 ባረከት፡ ለ፡ ልግ፡ ገ፡ ስብ፡ ስ፡ ግዚክ  
 ብሐር፡ ክምሰከክ፡ ጸ፡ ጸ፡ ጸ፡ ጸ፡ ጸ፡ ጸ፡  
**ዩከ፡ እግዚአብ፡ ገ፡ ገላ፡ ትክንዝ፡**  
 ክንተ፡ ነ፡ ኃ፡ ስልተ፡ ነ፡ ብከሱ፡ ስ



Ἐὰν ἂν πᾶσι τῶν  
 ἑξῆς ἢ ἀδελφῶν ἢ  
 ἀποστόλων ἢ ἀποστόλων  
 ἀποστόλων ἢ ἀποστόλων  
 ἢ ἀποστόλων ἢ ἀποστόλων  
 ἢ ἀποστόλων ἢ ἀποστόλων  
 ἢ ἀποστόλων ἢ ἀποστόλων  
 ἢ ἀποστόλων ἢ ἀποστόλων  
 ἢ ἀποστόλων ἢ ἀποστόλων  
 ἢ ἀποστόλων ἢ ἀποστόλων  
 ἢ ἀποστόλων ἢ ἀποστόλων  
 ἢ ἀποστόλων ἢ ἀποστόλων  
 ἢ ἀποστόλων ἢ ἀποστόλων  
 ἢ ἀποστόλων ἢ ἀποστόλων  
 ἢ ἀποστόλων ἢ ἀποστόλων  
 ἢ ἀποστόλων ἢ ἀποστόλων  
 ἢ ἀποστόλων ἢ ἀποστόλων  
 ἢ ἀποστόλων ἢ ἀποστόλων



	1	2	3	4	5	6	7	8	9	10	11	12	13	14	15	
L*	39.12	65.43	49.87	44.26	55.95	70.82	63.51	39.92	52.24	97.06	70.82	63.51	39.92	52.24	97.06	70.82
a*	13.28	18.11	-4.34	13.80	9.82	-33.43	34.26	11.81	48.55	9.82	-33.43	34.26	11.81	48.55	9.82	-33.43
b*	15.07	18.72	-22.29	22.85	-24.49	-0.35	99.80	-48.07	18.51	9.80	-48.07	18.51	9.80	-48.07	18.51	9.80

D50 Illuminant, 2 degree observer

Density → ansity → Density → 0.04 0.08 0.15 0.22 0.36 0.91

Golden





1	2	3	4	5	6	7	8	9	10	11(A)	12	13	14	15	16
38.12	65.43	49.87	44.26	55.56	70.82	63.51	39.92	52.24	97.06	92.02	87.34	82.14	72.06	62.51	39.92
14.24	18.11	-4.34	-13.85	9.82	-33.43	34.28	11.81	48.55	-0.42	-0.60	-0.75	-1.06	-1.19	-1.26	11.81
3.07	18.72	22.29	22.85	-24.49	-1.35	59.80	-48.07	16.51	1.12	0.23	0.21	0.43	0.26	0.90	-48.07

Dinant, 2 degree observer

Density → 0.04 0.09 0.15 0.22 0.36 Density ← 0.04 0.09 0.15 0.22 0.36 0.51

Golden

