

United States Department of the Interior  
National Park Service

# National Register of Historic Places Continuation Sheet

Section number Documents Page 5

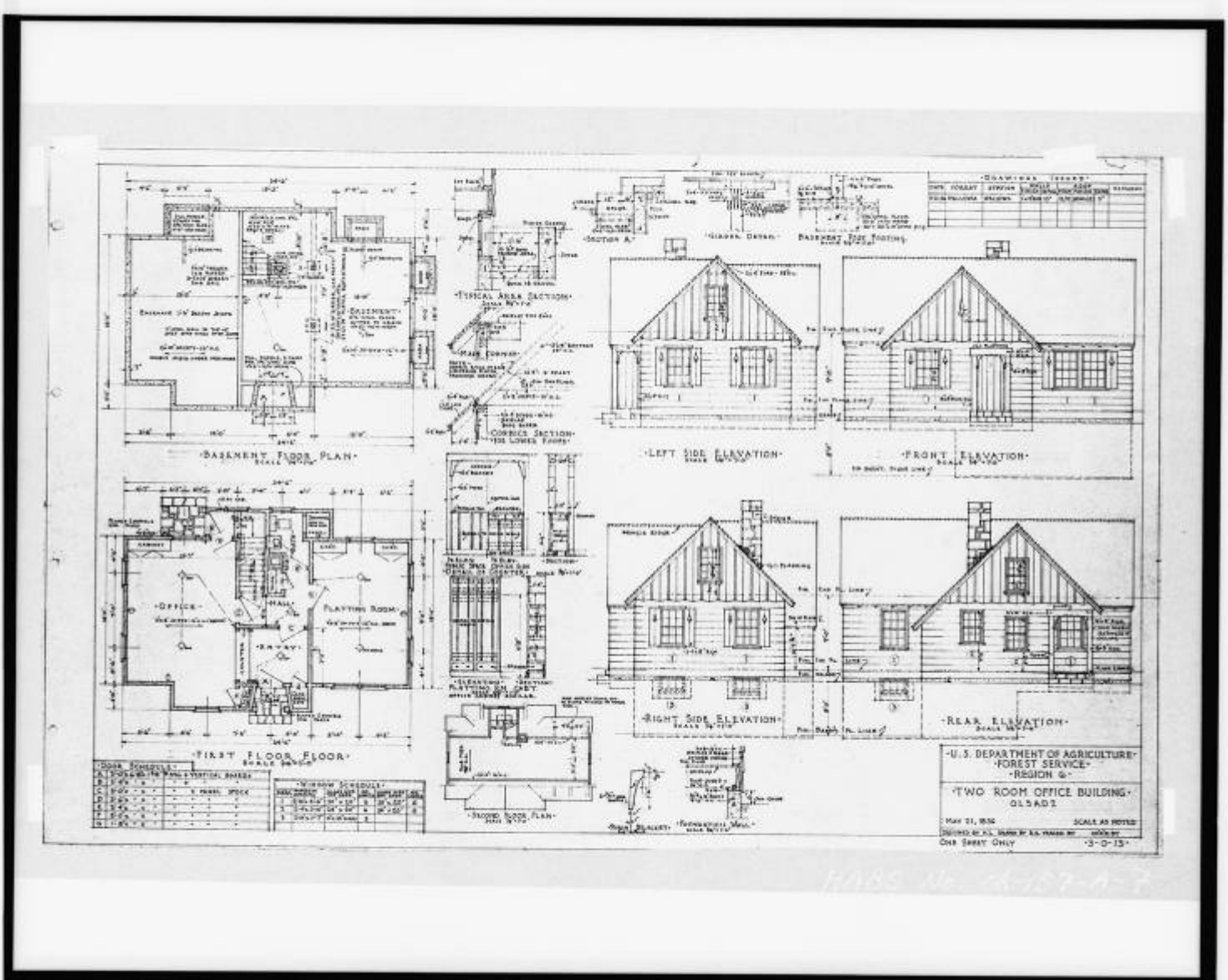


Figure 4. Architectural elevations and floor plans of Wallowa Ranger Station, Office included in HABS OR-157-A dated May 21, 1936. Original held at Wallowa-Whitman National Forest Supervisor's Office, Baker City, Oregon.

United States Department of the Interior  
National Park Service

# National Register of Historic Places Continuation Sheet

Section number Documents Page 6

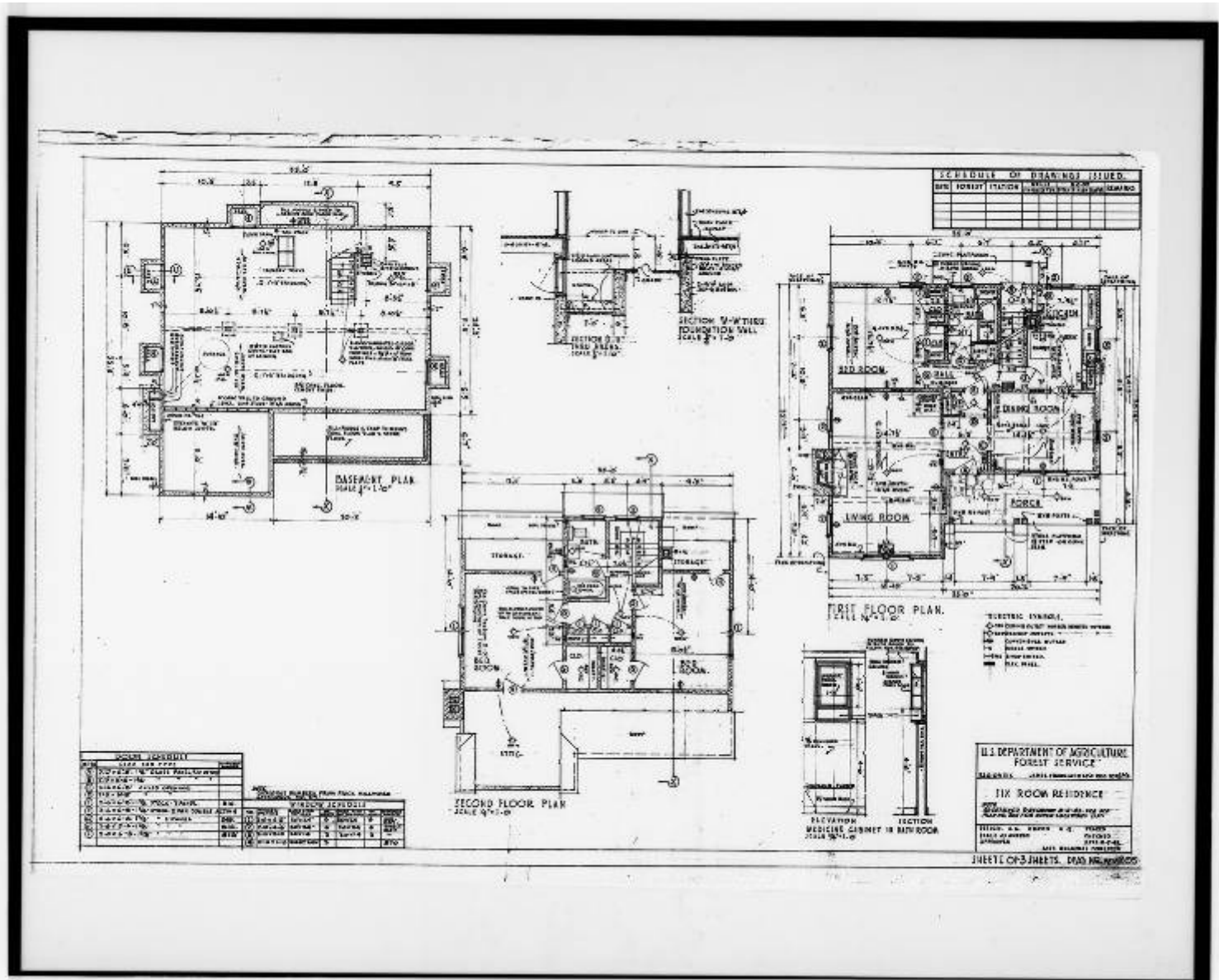


Figure 5. Architectural floor plans of Wallowa Ranger Station, Residence included in HABS OR-157-B dated August 5, 1943 (redesigned and redrawn from original July 14, 1936 drawings). Original held at Wallowa-Whitman National Forest Supervisor's Office, Baker City, Oregon.

United States Department of the Interior  
National Park Service

# National Register of Historic Places Continuation Sheet

Section number Documents Page 7

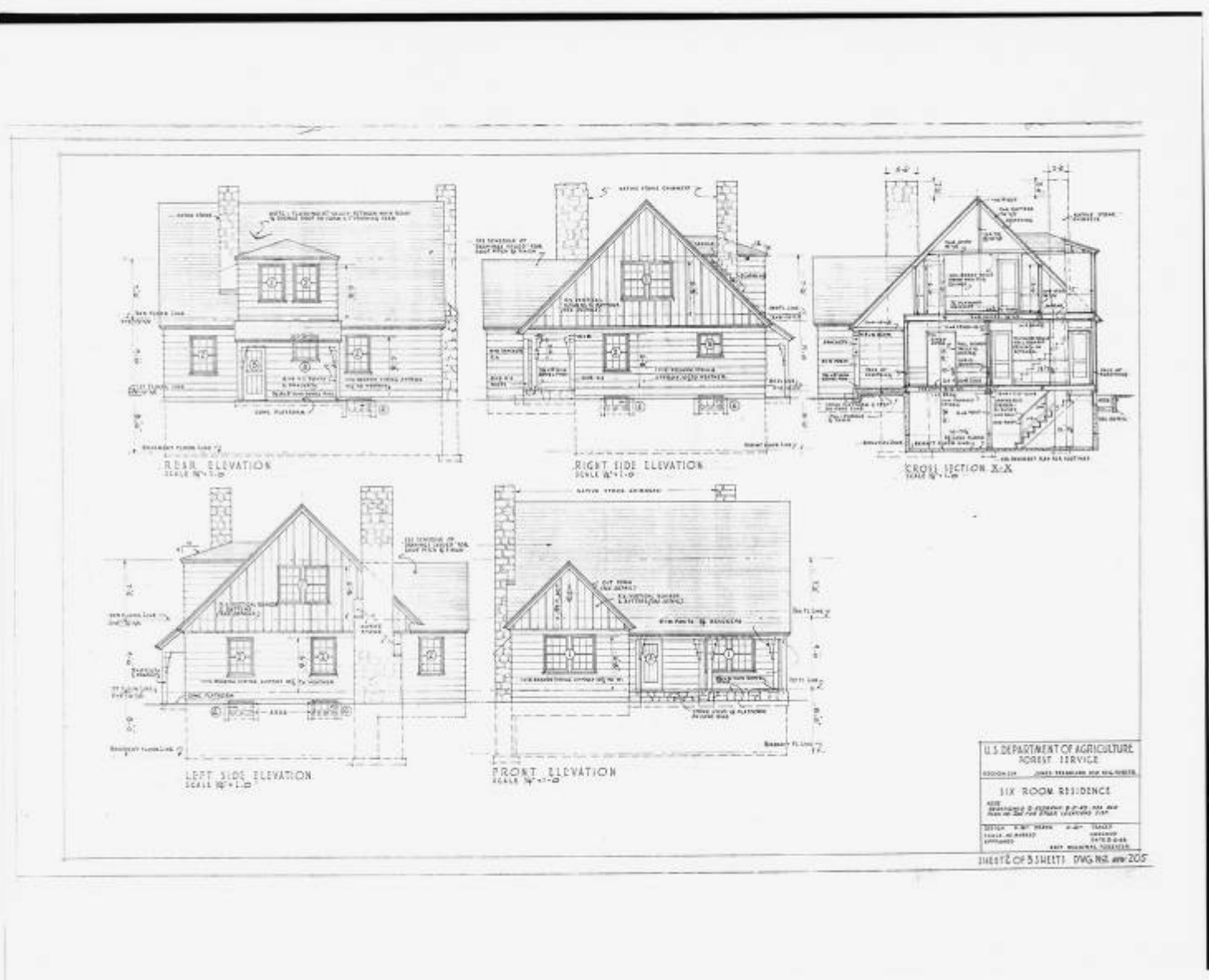


Figure 5a. Architectural elevations of Wallowa Ranger Station, Residence included in HABS OR-157-B dated August 5, 1943 (redesigned and redrawn from original July 14, 1936 drawings). Original held at Wallowa-Whitman National Forest Supervisor's Office, Baker City, Oregon.

United States Department of the Interior  
National Park Service

# National Register of Historic Places Continuation Sheet

Section number Documents Page 8

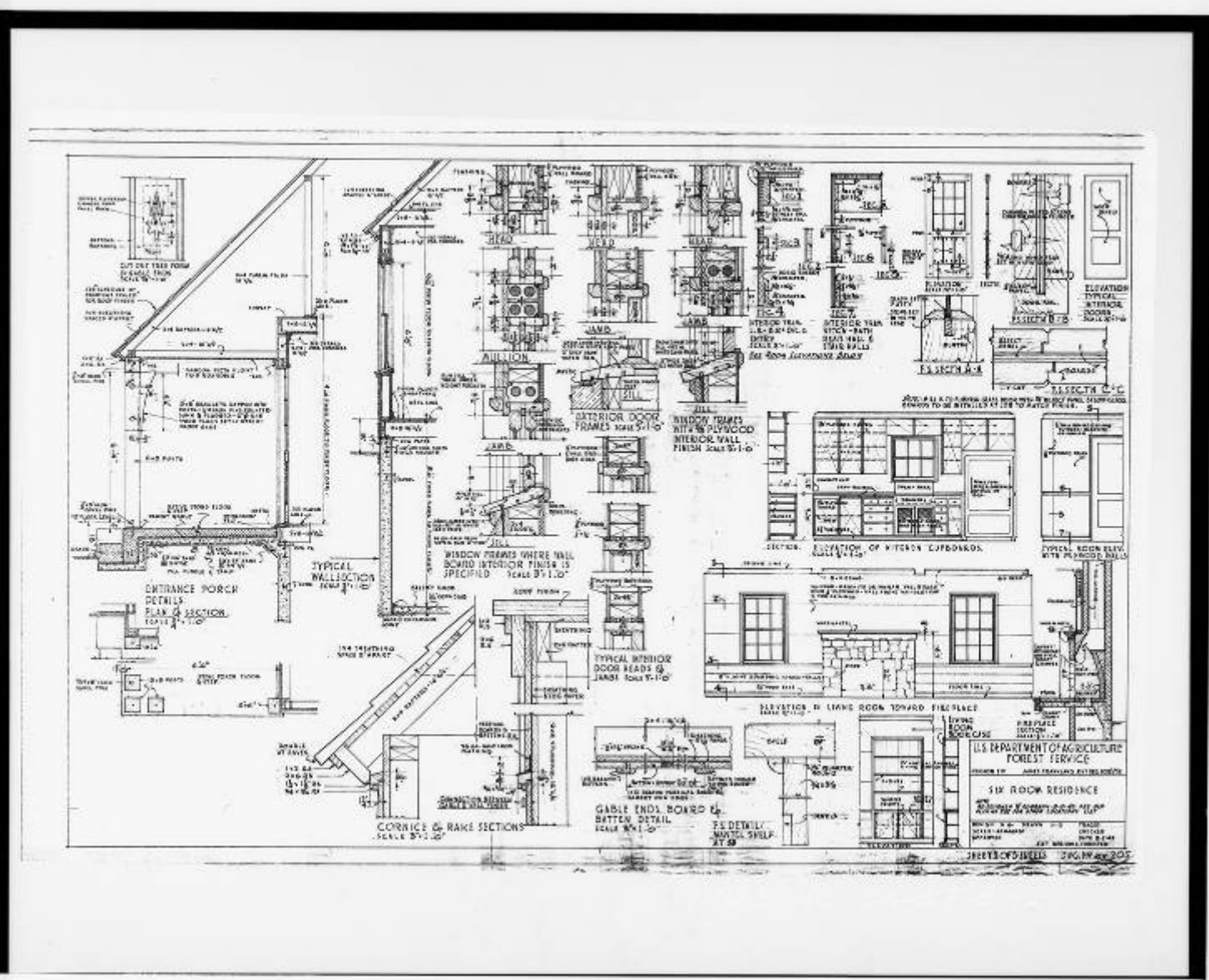


Figure 5b. Architectural details of Wallowa Ranger Station, Residence included in HABS OR-157-B dated August 5, 1943 (redesigned and redrawn from original July 14, 1936 drawings). Original held at Wallowa-Whitman National Forest Supervisor's Office, Baker City, Oregon.

United States Department of the Interior  
National Park Service

# National Register of Historic Places Continuation Sheet

Section number Documents Page 9

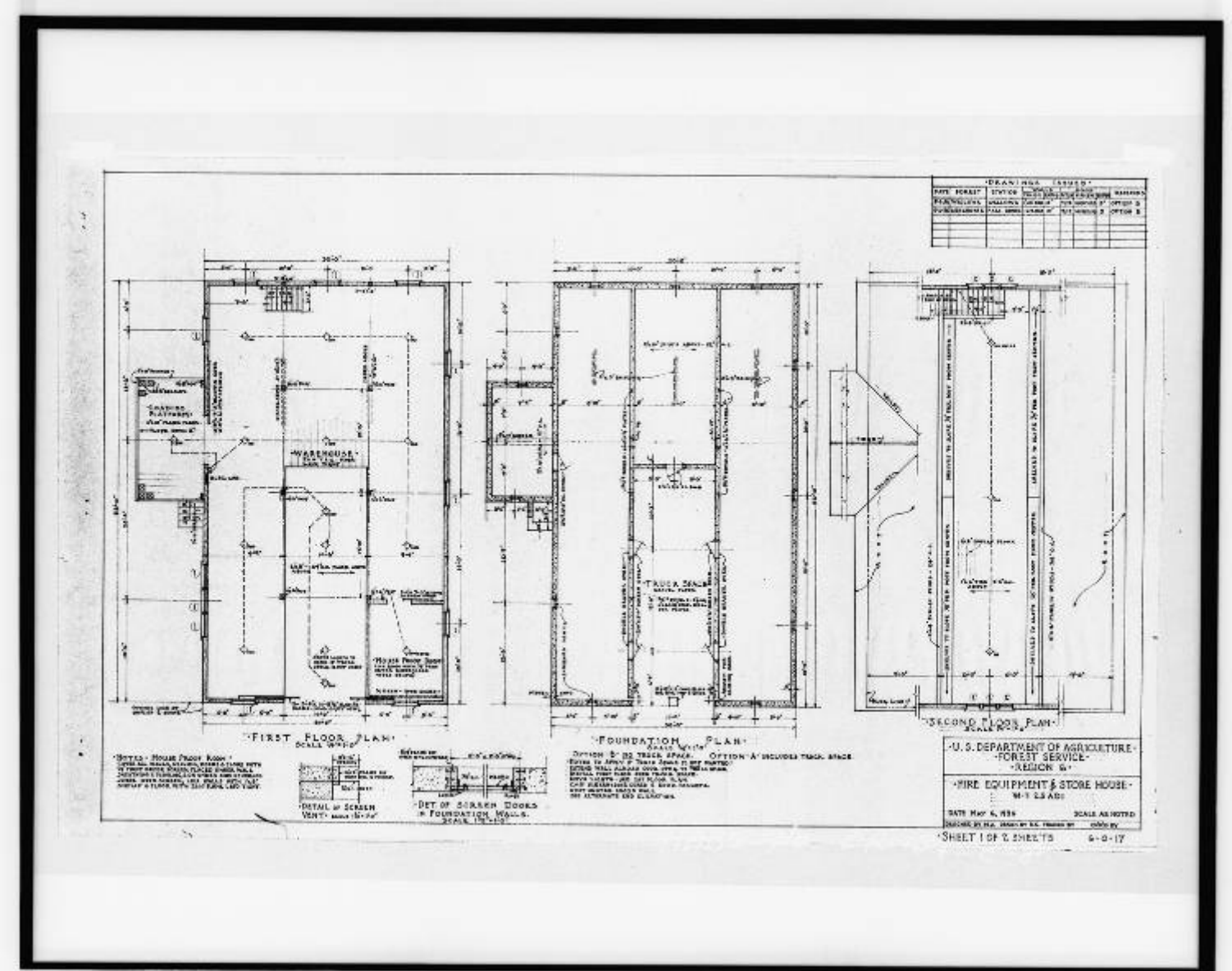


Figure 6. Architectural floor plans of Wallowa Ranger Station, Fire Equipment Building included in HABS OR-157-C dated May 6, 1936. Original held at Wallowa-Whitman National Forest Supervisor's Office, Baker City, Oregon.

United States Department of the Interior  
National Park Service

# National Register of Historic Places Continuation Sheet

Section number Documents Page 10

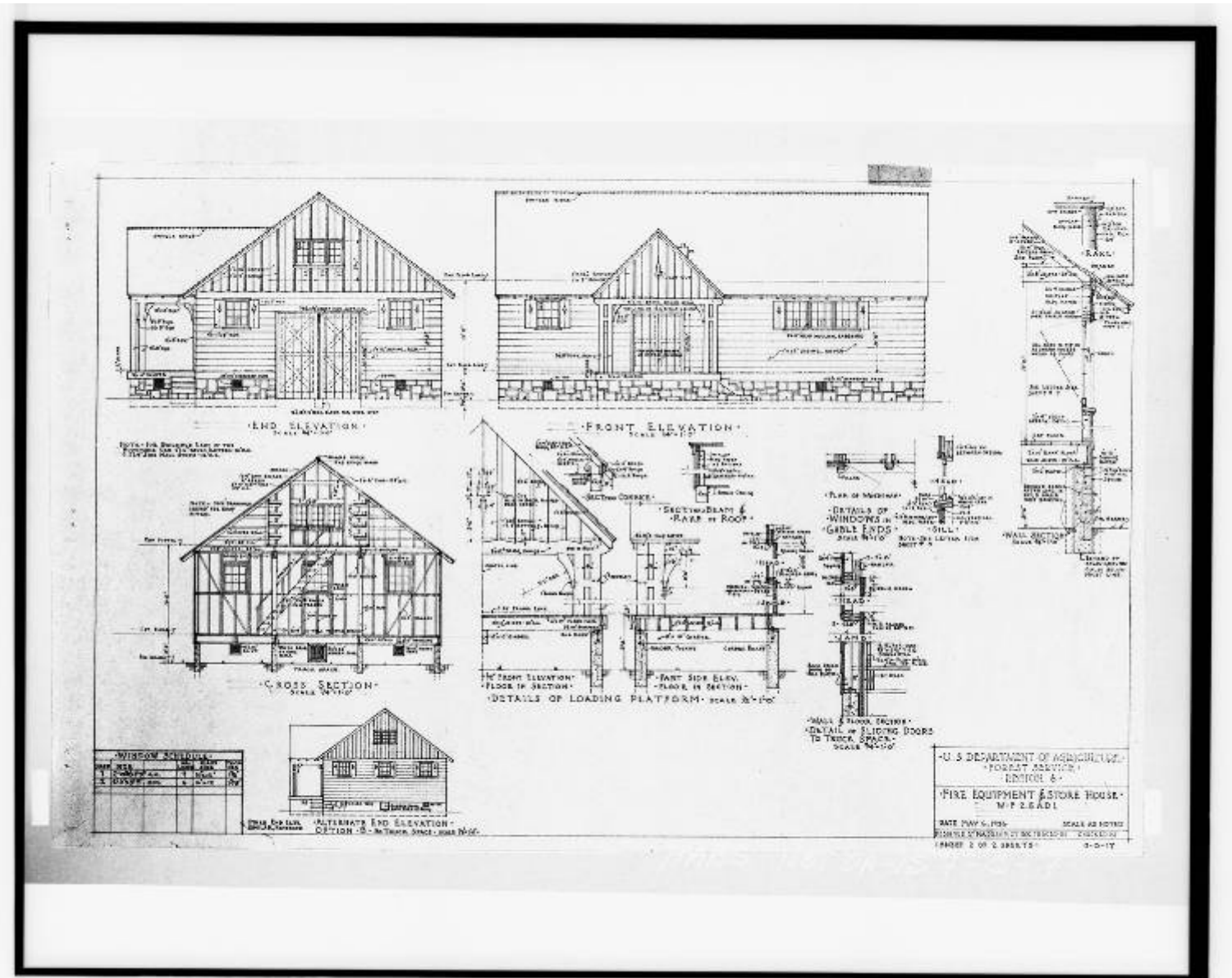


Figure 6a. Architectural elevations of Wallowa Ranger Station, Fire Equipment Building included in HABS OR-157-C dated May 6, 1936. Original held at Wallowa-Whitman National Forest Supervisor's Office, Baker City, Oregon.

United States Department of the Interior  
National Park Service

# National Register of Historic Places Continuation Sheet

Section number Documents Page 11

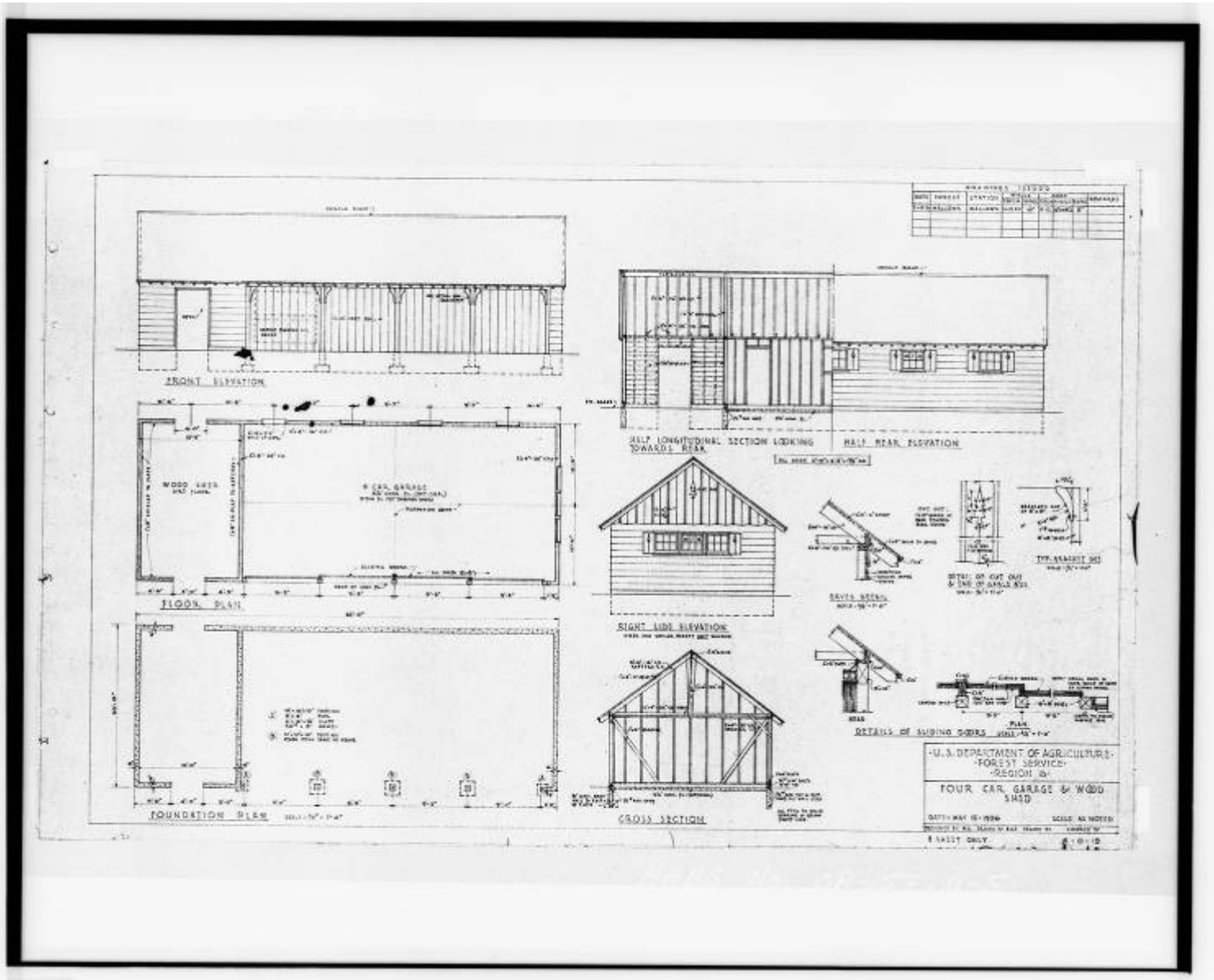


Figure 7. Architectural floor plan and elevations of Wallowa Ranger Station, Garage included in HABS OR-157-D dated May 15, 1936. Original held at Wallowa-Whitman National Forest Supervisor's Office, Baker City, Oregon.

United States Department of the Interior  
National Park Service

# National Register of Historic Places Continuation Sheet

Section number Documents Page 12

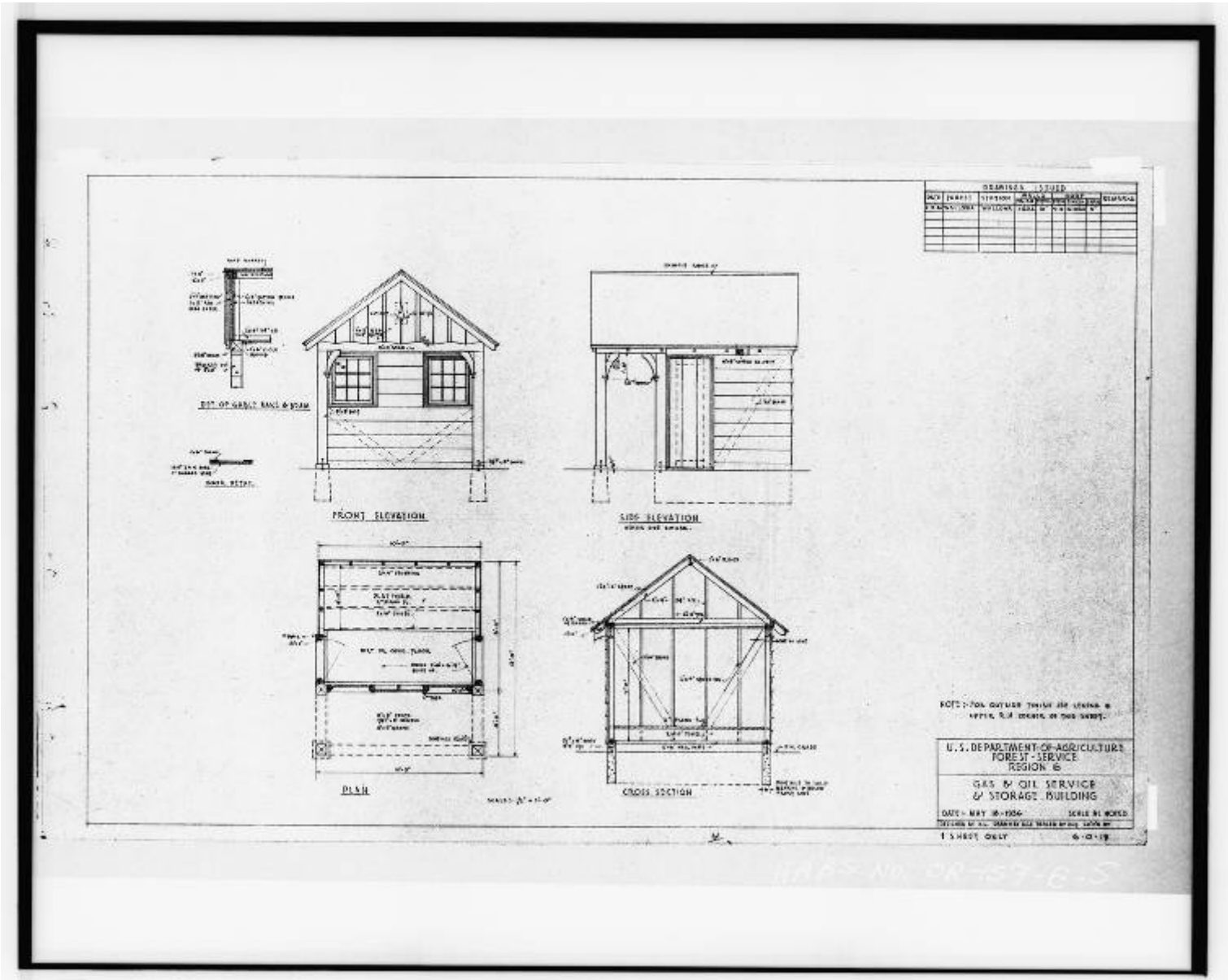


Figure 8. Architectural floor plan and elevations of Wallowa Ranger Station, Gas House included in HABS OR-157-E dated May 18, 1936. Original held at Wallowa-Whitman National Forest Supervisor's Office, Baker City, Oregon.