



Orthophotoquad

# Advance Materials

8012

U.S. Department of the Interior  
Geological Survey  
National Cartographic  
Information Center (NCIC)

## Advance Materials

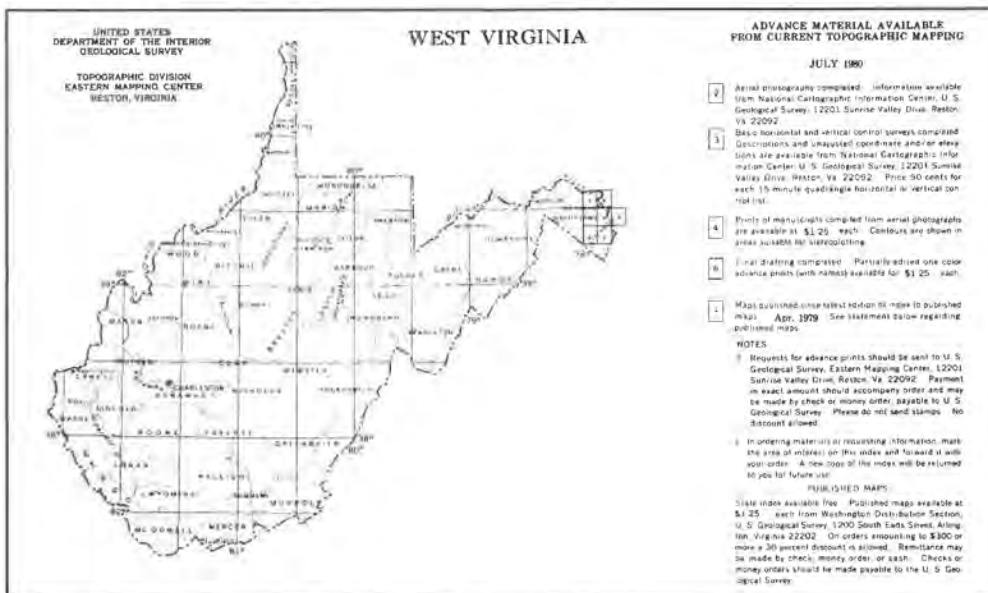
Mapmaking at the U.S. Geological Survey is an ongoing process that constantly generates new cartographic and geographic information about the United States. The Survey's advance materials are derived from the information gathered to produce new, revised, or updated maps. As information gathering is completed, the process of map preparation begins. At several stages, materials useful to the public are produced. Many map users take advantage of this opportunity to obtain Survey map materials in advance of publication.

Advance materials can be divided into two categories, those derived from current topographic mapping programs and those derived from the orthophotoquad mapping program. Topographic mapping involves the use of aerial photographs and other information to produce a drawn map. The orthophotoquad mapping program produces maps from the aerial

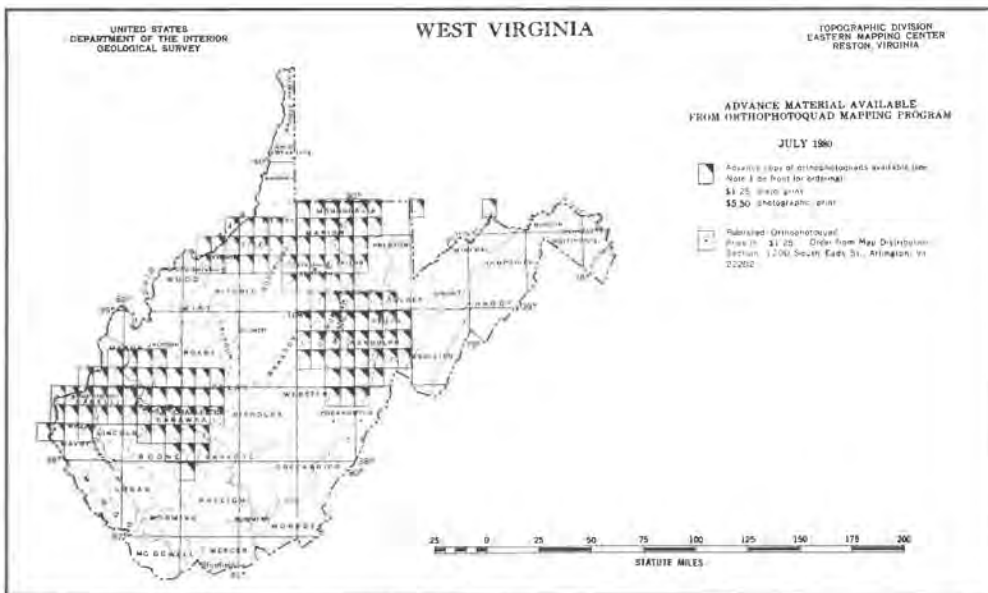
photographs themselves. An orthophotoquad is an aerial photographic image of a quadrangle (the area covered by a standard 7.5-minute Survey map) that has been corrected to eliminate distortion. When cartographic information—such as boundaries and place names—is added to the orthophotoquad it becomes an orthophotomap.

## Available Products

Advance materials become available at the Survey's four regional Mapping Centers as work progresses on maps of specific quadrangles in each State. Each Mapping Center is responsible for making the maps in certain States and for selling advance materials through their National Cartographic Information Center (NCIC) offices (see list). In most cases, some advance materials are available for every State.



Advance Material Index for Current Topographic Mapping Program



Advance Material Index for Orthophotoquad Mapping Program

Products generally available are:

■ **Current Topographic Mapping Program:**

Aerial photographs

• Geodetic control data, the basic horizontal and vertical position of control points.

• Prints of map manuscripts compiled from aerial photographs.

One-color unedited advance prints of maps (without place names)—only a few are made.

One-color partially edited advance prints of maps (with place names).

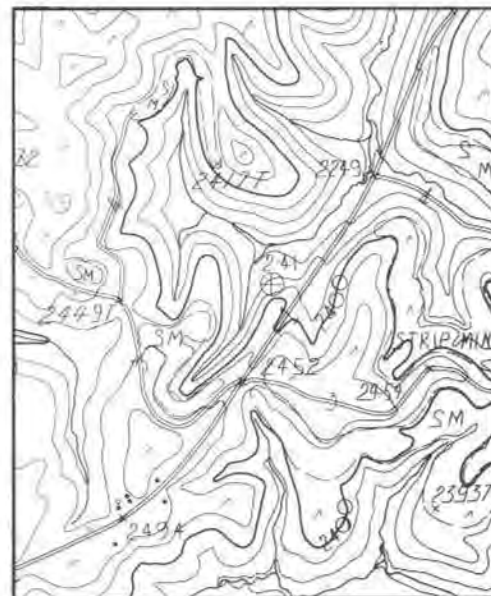
■ **Orthophotoquad Mapping Program:**

Aerial photographs

Orthophotoquads, produced as screened images on diazo paper (resembles a commercial photocopy), as a continuous tone image on photograph paper, or as a continuous tone image on opaque stable film.



Aerial photograph for compiling Ellamore, W.Va. topo map



One-color unedited advance print of Ellamore topo map

**Ordering Information**

To order advance materials, first request a free State Index and an Advance Materials Index for the State you are interested in from the NCIC office responsible for that State. These indexes describe advance materials from the current topographic and orthophotoquad mapping programs. The indexes also contain detailed price information. Price is based on the cost of producing advance material copies for the customer. Your request should include your name, address, and telephone number.



One-color partially edited advance print of Ellamore topo map



Orthophotoquad of Ellamore area

**NCIC Headquarters**

National Cartographic Information Center  
U.S. Geological Survey  
507 National Center  
Reston, Virginia 22092  
Telephone: 703/860-6045

**NCIC Offices**

Eastern Mapping Center—NCIC  
U.S. Geological Survey  
536 National Center  
Reston, Virginia 22092  
Telephone: 703/860-6336

Alabama, Connecticut, Delaware, District of Columbia, Florida, Georgia, Indiana, Kentucky, Maine, Maryland, Massachusetts, New Hampshire, New Jersey, New York, North Carolina, Ohio, Pennsylvania, Puerto Rico, Rhode Island, South Carolina, Tennessee, Vermont, Virginia, and West Virginia.

Mid-Century Mapping Center—NCIC  
U.S. Geological Survey  
1400 Independence Road  
Rolla, Missouri 65401  
Telephone: 314-341-0851

Arkansas, Illinois, Iowa, Kansas, Louisiana, Michigan, Minnesota, Mississippi, Missouri, Nebraska, North Dakota, Oklahoma, South Dakota, and Wisconsin.

Rocky Mountain Mapping Center—NCIC  
U.S. Geological Survey  
Box 25046, Stop 504 Federal Center  
Denver, Colorado 80225  
Telephone 303/234-2326

Alaska, Colorado, Montana, New Mexico, Texas, Utah, and Wyoming.

Western Mapping Center—NCIC  
U.S. Geological Survey  
345 Middlefield Road  
Menlo Park, California 94025  
Telephone: 415/323-8111, ext. 2427

Arizona, California, Hawaii, Idaho, Nevada, Oregon, and Washington.