

Answers to the question dated 25th Oct. 1919.

O.K.

1st question. At the Katori Jingu of Shimosa prov., when does the Hoshi Shizume matsuri or Star Calming Festival take place, and what is the order of the service?

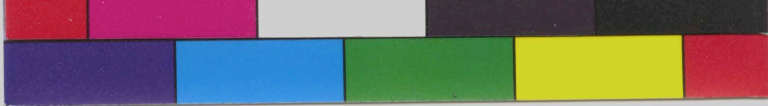
The answer: Hoshi Shizume Matsuri is held at 4 o'clock p. m. January, 16th, every year.

The order of the festival: The passage called Baba-dori outside the gate of the shrine is purified as the festival is held here. A large target is erected, and some quantity of sand is heaped up before the target. Next at the appointed hour, the Guji and other shinto priests take their seats, and four archers occupy their seats ~~at the sides of the passage~~ facing each other from either side, two by two. Next, Negi reads Norito, and then one archer ~~from both sides~~ comes out from both sides and shoot the target with two arrows and then they proceed to the target and examine the target and then they erect the arrows which hit the mark on the heaped sand. Next the rest two archers come out and do the same.

Origin of the festival: In the divine ages, the deity Futsunushi no kami came down from the Plain of High Heaven by the order of Amaterasu omikami to calm the Land of Fair rice-ears---the fertile reed-plain, only Kagase-o, the deity of star, did not obey to the Kami, in spite of all other wicked deities became obedient. So the deity of star was killed. This is said to <sup>be</sup> the origin of the festival. (Translation of the answer from the shrine).

2nd Question: When does the Gashi sai or Message of Congratulation take place at the same shrine?

Answer: It is held on the 1st December at 5 o'clock afternoon.



Faint, illegible text on aged paper, possibly bleed-through from the reverse side. The text is too light to transcribe accurately.