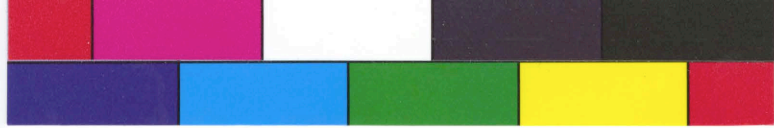


OK.
Oho miwa jinja, Yamato prov. 1st rank-1st class.

Supplimentary information.

On the 11th of March (the Moon calendar) Hanashizime sai ~~ix~~
or Flower calming festival is held. This festival is observed from
the ancient time, being intended ~~x~~ to calm pestilential diseases,
because ~~xxxxxxdiseasesxxxxxx~~ the epidemic diseases are prevalent in
the flower season. In this festival medical grass taken at the
mount ~~miwa~~^M on which the shrine stands, are offered to the deity.

(From the material at the Shrine bureau).



Ohno miwa jinja, Yamato prov. 1st rank-1st class.

Supplementary information.

On the 15th of March (the Moon calendar) Hanshizime sai is
 or Flower calming festival is held. This festival is observed from
 the ancient time, being intended to calm pestilential diseases,
 because ~~xxxxxxxxxxxx~~ the epidemic diseases are prevalent in
 the flower season. In this festival medical grass taken at the
^Mmount miwa on which the shrine stands, are offered to the deity.

(From the material at the Shrine bureau).