

Atsuta Jingu.

Busha Shinji. 15th day of 1st Month.  
*or Hosha Jinji*

Early A.M. the Mike den is decorated.

6 A.M. Guji and others go to the Sanshōjo.

8 A.M. All go to the Harai Dokoro. Then they all go to the Ishi-  
tsubo, of Naka-noye where they worship the Kami. Then return to Mike den.  
The door of the Divine Hall is opened. Negi and others offer Shin sen  
while music is played. The Guji reads a Norito and offers Tamaguchi. They  
all worship the Kami.

Negi and others remove the Divine food, Music. They close the  
door of the Inner Hall. Then all retire.

At 12 Noon the officials who have charge of the ~~arrow~~ archery

go to to a place where a tent is erected temporarily which is called  
*The Gon-guji comes and takes his seat after bowing and praying Kami, in the Akusha. The Guji does the same*  
Akusha.) Then the Matsu boshi yaku hands an inkstone to the messenger  
boy who takes it to the officer who has charge of the arrow shooting.  
(Yacho yaku) The Gonshi erects the target, (Omato) The messenger boy  
places a shield painted white, and arrows of white feathers and bow  
and Kiri-nusa and San-mai (to be used for the purification)  
of white wood, in front of the archer. The archers form a line right and  
left. Matsu boshi yaku, the Target master places a white shield.  
Messenger brings six wine cups and place them *follows them.* before Matsu boshi raku.  
Matsu boshi yaku takes a cup and takes six swallows, and takes another  
cup and again takes six swallows and hands the cup to No One Archer  
who does the same thing and all archers repeat.

Matsuboshi yaku goes in front of the target and points to small white  
shield on target. *the cat its center and right and left and purify it with the Kirinusa and Sanmai*  
The archer *removes* portion of his robe, faces west  
*and* *the he (the right)* faces the target and says to himself some mystic word or prayer and  
*(in cantation)*  
shoots toward Heaven, towards earth and center then faces north.  
The archers stand up and form line march on slowly 6 steps and  
face the target pronouncing the incantation. Then they proceed on slowly  
*again*



Atsuta Jingu.

Buaha Saito. 15th day of 1st Month.  
*at Hozon Jingu*

Early A.M. the Mike den is decorated.

6 A.M. Gaji and others go to the Banahajo.

8 A.M. All go to the Harai Dokoro. Then they all go to the Iahi-

tarbo, of Maku-noye where they worship the Kami. Then return to Mike den.

The door of the Ihi-ha Hall is opened. Negi and others offer Shin sen

while music is played. The Gaji reads a Norito and offers Tamaguchi. The

all worship the Kami.

Negi and others remove the Divine food, Music. They close the

door of the Inner Hall. Then all retire.

At 12 Noon the officials who have charge of the archery

go to a place where a tent is erected temporarily which is called

Akaha. Then the Matsuboshi Yaku hands an Iakakoro to the messenger.

The Gaji comes and takes his seat. The Gaji bows and passing his

boy who takes it to the officer who has charge of the arrow shooting.

(Yacho Yaku) The Gohshi erects the target, (Omato) The messenger of

boy pieces a shield painted white, and arrows of white feathers and bow

of white wood in front of the archer. The archers form a line right and

left. Matsuboshi Yaku, the target master places a white shield.

Messenger brings six wine cups and place them before Matsuboshi Yaku.

Matsuboshi Yaku takes a cup and takes six swallows, and takes another

cup and again takes six swallows and hands the cup to No One Archer

who does the same thing and all archers repeat.

Matsuboshi Yaku goes in front of the target and points a small white

shield on target. The archer portion of his robe, faces west

faces the target and says to himself some mystic word or prayer and

shoots toward Heaven, towards earth and center then faces north.

The Gaji  
close the  
door

With the  
small white

(in center)

The archers stand up and form line in front of target and shoot

The Yacho Yaku provides each archer with bows and arrows. Each archer with his attendants walks slowly to the place where the ceremony is to be performed. After observing all due rites and honors, according to the ritual of Archery, the first archer discharges an arrow. Each archer ~~discharges three arrows~~, after which he goes to the place where the Guji <sup>and Gon Guji</sup> ~~is~~ seated and receives a prize from him. After receiving the prize the archer faces toward the Kami and reports what he has done ~~to the Kami~~.

The Yatcho Kaku takes his notebook in which the record is kept and asks the Guji and Gon guji to examine the record. The Guji <sup>and Gon Guji</sup> bows to the archers and the ceremony ends.

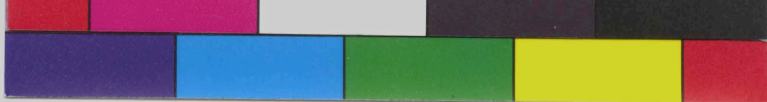
\*\*\*\*\*

(The work of archery takes place near the Kajo-mon (the South gate))

What is name of sacred house? = Jim-me <sup>Dinner house</sup>

Is the ~~Mike-den~~ close to the inner sanctuary  
See map? <sup>no</sup> Do not the priests take their places inside  
between the Naka-roye & the inner shrine? when the  
food offerings are presented? <sup>no</sup>

What is the english of Matsuri boshu yaken? <sup>D</sup> To take the charge of the target.  
What is the english of Yacho Yaken? <sup>to keep the record of</sup>  
How many archers are there? <sup>the work of archers</sup>  
It is supposed to be 4



The Yacho Yaku provides each archer with bows and arrows. Each archer with his attendants walks slowly to the place where the ceremony is to be performed. After observing all due rites and honors, according to the ritual of Archery, the first archer discharges an arrow. Each archer discharges three arrows, after which he goes to the place where the Guli is seated and receives a prize from him. After receiving the prize the archer faces toward the Kami and reports what he has done to the Kami. The Yacho Yaku takes his notebook in which the record is kept and asks the Guli and Gon Guli to examine the record. The Guli bows to the archers and the ceremony ends.

\*\*\*\*\*

*(The work of Guli and Gon Guli)*

*What is necessary to be done?*

*To be done. One class & the other...*

*Do not the first take their place...*

*between the two - one & the other...*

*first offering on...*

*What is the purpose of...*

*How many...*

*It is to be the...*

*the work of...*

Atsuta Jingu.

Busha Shinji. 15th day of 1st Month.  
*or Ho sha jinji*

Early A.M. the Mike den is decorated.

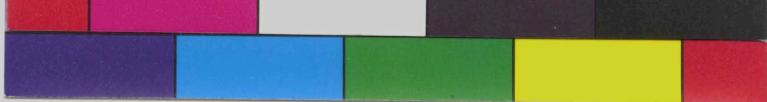
6 A.M. Guji and others go to the Sanshojo.

8 A.M. All go to the Harai Dokoro. Then they all go to the Ishi-  
tsubo, of Naka noye where they worship the Kami. Then return to Mike den.  
The door of the Divine Hall is opened. Negi and others offer Shin sen  
while music is played. The Guji reads a Norito and offers Tamaguchi. The  
all worship the Kami.

Negi and others remove the Divine food, Music. They close the  
door of the Inner Hall. Then all retire.

At 12 Noon the officials who have charge of the ~~arrow~~ archery  
go to to a place where a tent is ~~erected~~ temporarily which is called  
Akusha. Then the Matsu boshi yaku hands an inkstone to the messenger  
boy who takes it to the officer who has charge of the arrow shooting.  
(Yacho yaku) The <sup>G</sup>anshi erects the target, (Omato) The messenger by  
boy places a shield painted white, and arrows of white feathers and bow  
of white wood in front of the archer. The archers form a line right and  
left. Matsu boshi raku, the Target master places a white shield.  
Messenger brings six wine cups and place them before Matsu boshi raku.  
Matsu boshi raku takes a cup and takes six swallows, and takes another  
cup and again takes six swallows and hands the cup to No One Archer  
who does the same thing and all archers repeat.

Matsuboshi <sup>removes</sup> yaku goes in front of the target and points to small  
shield or target. The archer/portion of his robe, faces west .  
He faces the target and says to himself some mystic word or payer and  
shoots toward Heaven, towards earth and center then faces north.



Atsuta Jingu.

Bushu Jingu 15th day of 1st Month.

*at the Jingu*

Early A.M. the Mike den is decorated.

6 A.M. Giji and others go to the Banhojo.

8 A.M. All go to the Harai Dokoro. Then they all go to the Ichi-tsubo, of Waka noye where they worship the Kami. Then return to Mike den.

The door of the Divine Hall is opened. Negi and others offer Shira den while music is played. The Giji reads a Norito and offers Tamagushi. Then all worship the Kami.

Negi and others remove the Divine food, Kutsu. They close the

door of the Inner Hall. Then all retire.

At 12 Noon the officials who have charge of the <sup>archery</sup> ~~game~~

go to a place where a tent is erected temporarily which is called Akusha. Then the Matan bushi yaku hands an inkstone to the messenger boy who takes it to the officer who has charge of the arrow shooting.

(Yosho yaku) The Gijari erects the target, (Omato). The messenger boy places a shield painted white, and arrows of white feathers and bow of white wood in front of the archer. The archers form a line right and left. Matan bushi yaku, the target master places a white shield.

Messenger brings six wine cups and place them before Matan bushi yaku. Matan bushi yaku takes a cup and takes six swallows, and takes another cup and again takes six swallows and hands the cup to No One Archer who does the same thing and all archers repeat.

Matan bushi yaku goes in front of the target and points to small shield or target. The archer <sup>removes</sup> portion of his rope, faces west. He faces the target and says to himself some mystic word or prayer and shoots toward Heaven, towards earth and center then faces north.