

Atsuta Jingu.

Kinen sai, Feb. 17th.

\*\*\*\*\*

The Shinden is decorated. The Guji Shuten, Kusho and others remain in the Sanshujo over night.

At 7 A.M. The Envoy from the Government arrives with his followers at the Shrine office. All shrine belongings which are to be used in connection with the festival are put in good order. The Kara hitsu is carried to the front yard of the Imibiya den or sacred fire hall. The material used for the divine food is purified with Onusa and salt. The officials accompany the Kara hitsu to the tent near the steps of the main shrine, where they seat themselves.

At 8 A.M. All go to the front of the Kagura den where they are purified. Then they go to the second tori-i where they form a line. One Shuten goes to the shrine office and receives the Envoy. The Divine Food offering box is brought to the Tori-i, accompanied by the followers of the Envoy. They join the line and salute the others.

The Negi reads the prayer of purification. The Shuten purifies <sup>with Onusa and salt</sup> the sacred box/and the envoys and his followers. They all return to the main shrine. The Shuten hands the key of the Inner Sanctuary to the Guji, who ascends the steps, opens the door and places the key on the floor, during which time there is music. The Negi, <sup>2</sup>shuten, 3 kusho form a line and pass the trays of food from one to another, the Negi placing them on the table before the Sanctuary.

Shuten hands the Norito to the Guji ---, who reads it at the Inside Gate. (Mizu gaki) before the Inner Sanctuary. The Sacred offering is carried to the steps of the Main shrine and placed on a stand which was placed there for that purpose.



Atanta Jingu.

Kinen sai, Feb. 17th.

\*\*\*\*\*

The Shrine is decorated. The Guji Shuten, Kasha and others

remain in the Sanbutsu over night.

At 7 A.M. The Envoy from the Government arrives with his followers

at the Shrine office. All shrine belongings which are to be used in connection with the festival are put in good order. The Kara hitau is carried to the front yard of the Imidya den or sacred fire hall. The material used for the divine food is purified with Omusa and asai. The officials accompany the Kara hitau to the tent near the steps of the main shrine, where they seat themselves.

At 8 A.M. All go to the front of the Kagura den where they are

purified. Then they go to the second torii where they form a line. One Shuten goes to the shrine office and receives the Envoy. The Divine Food offering box is brought to the Torii, accompanied by the followers of the Envoy. They join the line and salute the others.

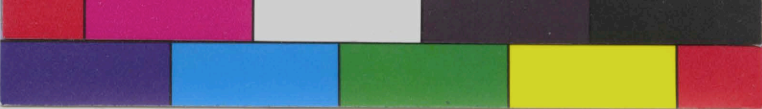
The Negi reads the prayer of purification. The Shuten purifies

the sacred box and the envoys and his followers. They all return to the main shrine. The Shuten hands the key of the Inner Sanctuary to the Guji, who ascends the steps, opens the door and places the key on the floor, during which time there is music. The Negi, Shuten, 3 kasha form a line and pass the trays of food from one to another, the Negi placing them on the table before the Sanctuary.

Shuten hands the Horito to the Guji, who reads it at the

Inside Gate. (Mizu gaki) before the Inner Sanctuary. The Sacred offering is carried to the steps of the Main shrine and placed on a stand which

was placed there for that purpose.



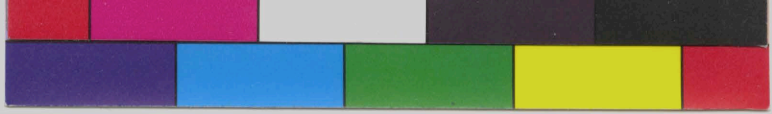
The Negi lifts the offering and gives it to the gon guji, Then the guji places the offering on the stand. The followers of the envoy hand hima norito which he reads. The sacred food is removed with the same ceremony with which it was offered. There is music.

Then all ascend the steps and the gon guji lifts the offering and hands it to the guji who places it in the Inner sanctuary. The door of the inner sancturary is closed during which time there is music.

The guji returns the key to the shuten. The followers of the envoy hand him tamagushi whi ch he places on the stand in front of the shrine. Th e Guji and gon guji also offer tamagushi. The envoy and followers worship by clapping their hands eight times. The guji informs the envoy that the ceremony is finished.

The Kusho close the gate of the Inner shrine.

\*\*\*



The Negi lifts the offering and gives it to the gon guji. Then the guji places the offering on the stand. The followers of the envoy hand him notice which he reads. The sacred food is removed with the same ceremony with which it was offered. There is music.

Then all ascend the steps and the gon guji lifts the offering and hands it to the guji who places it in the inner sanctuary. The door of the inner sanctuary is closed during which time there is music. The guji returns the key to the shrine. The followers of the envoy hand him tamagushi which he places on the stand in front of the shrine. The e Guji and gon guji also offer tamagushi. The envoy and followers worship by clapping their hands eight times. The guji informs the envoy that the ceremony is finished. The Kwabo close the gate of the inner shrine.

\*\*\*