

Translation of "Yamato Meisho zuye.

Yamato--Yamato Province.

Meisho--Famous or prominent places.

zuye--Illustrations. Used when the pictures are the most important part of a book.

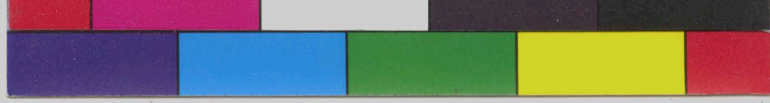
-----

Tonin--Chinese dynasty, or a man from the To dynasty.

Sataishiki --Shiki-ceremony, Satai not known, probably of chinese origin

Bato nin, ba-horse, to-head, nin-person. Head horse man or groom

Koma kiso shiki---koma-horse, kiso-horse race, shiki-ceremony or horse race ceremony.



Translation of "Yamato Katsubo" by

Yamato--Yamato Province.

Katsubo--Katsubo or prominent places.

Katsubo--Katsubo. Used when the pictures are the most important

part of a book.

Tomin--Chinese dynasty, or a man from the To dynasty.

Katsubo--Katsubo, Katsubo ceremony, Katsubo ceremony, probably of Chinese origin

Katsubo, Katsubo, to-head, nin-person. Head horse man or groom

Katsubo Katsubo Katsubo Katsubo Katsubo Katsubo Katsubo Katsubo

horse race ceremony.