

Questions.

Yasaka Jinja. Prof . Kuno.

\*\*\*\*\*

1--Translation of characters making up the words (See Jan. 1st)

U-keru matsuri,

O-Kara matsuri

Byashin matsuri

Ne no kumi

So-ko-no-kumm

Harai Kotoba.

2--(See Jan. 3)

Kayu-zue

Naoraye banquet

Ye-hi-zin

Chinowa

Setsubun (Feb 3 to 6th)

Otoshi-no-yashiro

Kinoe-sai

Sui jin no yashiro (see June 1)

Mizugami jinja

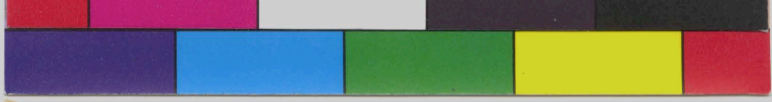
Chinka-sai (Nov. 1)

Kiri nusa (June 1)

Hetsu nusa

Hito gata

Go shin jinku (Nov. 10th)



Yasaka Jinja. Prof. Kuno.

Questions.

\*\*\*\*\*

!--Translation of characters making up the words (See Jan. 1st)

U-kera matauri

O-kara matauri

Byashin matauri

Ne no kumi

So-ko-no-kumi

Harai Kotoba.

2--(See Jan. 3)

Kyu-zue

Isoraye panduet

Ye-hi-zin

Chinwa

Setabun (Feb 3 to 6th)

Otoahi-no-yashiro

Kino-sai

Gai jin no yashiro (see June 1)

Mizugami Jinja

Chinka-sai (Nov. 1)

Kiri nua (June 1)

Hetai nua

Kito Gata

Go shin Jinju (Nov. 10th)

Yasaka Jinja--Questions.

1--Character making up the following words. Give translation.

Funa boko or Fune hoko.

Iwa-to-yama

Hakuga yama

Toro yama or Tori-yama

Yamabushi yama

Kanko-boko or Kankoku-boko,

Naginata boko

Hoka boko and yama boko

Kakkyo yama or Kwa kyo yama

Togusa kari yama

Moso yama

Hakurakuten yama

Tenjin yama

Hosho yama

Nimatori yama or hoko

Kasa boko

Arare tenjin yama

Askikari yama

Suhama boko

Kwannon yama boko

Funa benkei yama

Kuro nushi yama

Gyoja yama

Jomyo yama

Suzuka yama.

Koma gata chigo

Chigo shasan

Harai no Kotoba

Sugi-ha no mamori,

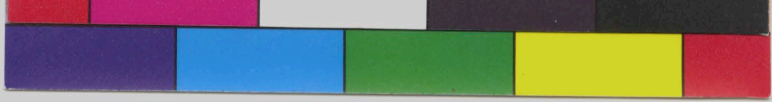
Kumi naka no jinja

Imitake (pillars)

Mikoshi mukai or Miyuki sai

Iwato yama kiyo harai

Otabi-kaja den sha (2 dy shri



Yasaka jinja--Questions.

1--Character making up the following words. Give translation.

Funa boko or Fune boko.

Iwa-jo-yama

Ikutsu yama

Toro yama or Tori-yama

Yamauchi yama

Kanko-boko or Kankoku-boko,

Nagata boko

Hoko boko and yama boko

Kekyo yama or Kwa kyo yama

Togusa kari yama

Moas yama

Hakurakuten yama

Tenjin yama

Hocho yama

Nimajori yama or hoko

Kasa boko

Arare tenjin yama

Asikari yama

Shirama boko

Kwannon yama boko

Funa benkei yama

Kuro nushi yama

Gyoja yama

Tomyo yama

Shuzuka yama.

Koma gata chigo

Chigo shasan

Hara no Kotoba

Sugi-ha no manori.

Kwai naka no jinja

Imitate (pillars)

Mikoshi nishi or Mikoshi east

Iwato yama kyo harai

Osaki-kata den eba (S by shira)