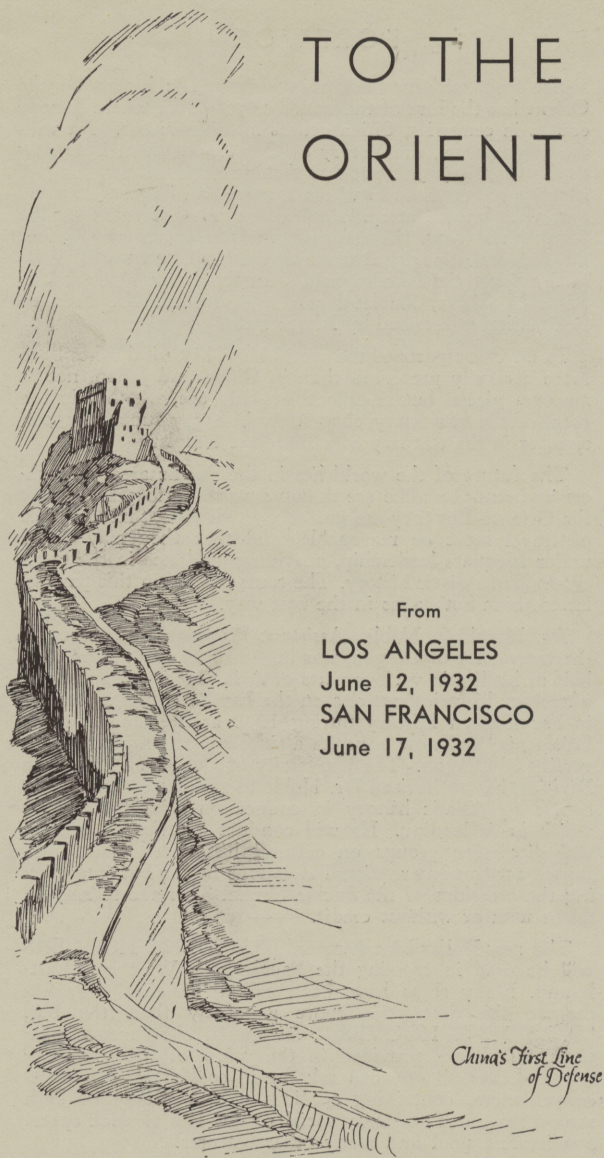


# STUDENT'S TOUR TO THE ORIENT



From  
LOS ANGELES  
June 12, 1932  
SAN FRANCISCO  
June 17, 1932

*China's First Line  
of Defense*

Organized and Conducted by  
Harold J. Noble, Ph. D.  
Professor of History, University of Oregon  
Eugene, Oregon



Business Management  
AMERICAN EXPRESS COMPANY



## FOREWORD

See Asia with understanding eyes. The history of the Orient has the lure of thousands of years, for where Europe counts in centuries, China counts in millenniums. Yet with all its great age, the history of China and Japan is so new to the Occident that but few Americans know anything of it compared to those to whom Europe and its past is an old and well known story. And added to that sense of the unique, the new, the unusual, the student of the Orient finds a romantic appeal unsurpassed in all the world. Who in the West can be compared with the Great Mongol Emperor of China, Kublai Khan, whose court has been so fascinatingly described by Marco Polo?

In no other parts of the world have historical relics been more carefully preserved than in China and Japan, not as museum pieces, but as objects of daily use, whether in the form of the customary chop-stick, in a gay funeral procession, or in the statuary of a Buddhist temple.

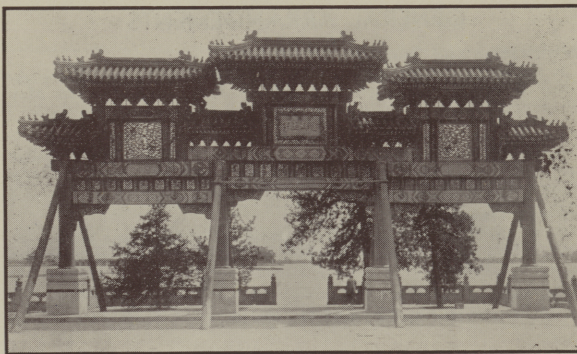
The future of the world lies in the Pacific area. Teachers and students alike are drawn irresistibly to plan to visit the Orient. But they are guided by two aims, that the price of travel must be reasonable, and that they may travel under adequate leadership, providing guidance in the backgrounds of Asiatic history. The tours offered in this pamphlet combine both aims in the best way.

Dr. Harold J. Noble, Assistant Professor of History at the University of Oregon, was born in and spent more than half of his life in various parts of Asia. He is the author of numerous historical articles on the Far East; was a lecturer in Far Eastern History during 1930 at the University of California; and now occupies a similar position at the University of Oregon. The University of California Extension Division has authorized Dr. Noble to give a *two unit credit course* in Asiatic history in connection with these tours which he is leading. He will conduct a series of lectures and discussion groups on cultural history of China and Japan, and on International Relations in the Far East during the crossings of the Pacific Ocean. This course may be taken with or without credit.

The new Dollar Line steamer "PRESIDENT HOOVER" will be used in crossing the Pacific both West and East-bound. Many ships have been called "palatial" but few deserve the description more genuinely than the S.S. "PRESIDENT HOOVER." Its special class accommodations, which are provided in the prices of the tours announced, are all one can ask for in comfort and modern conveniences, containing spacious cabins, plenty of bath rooms, luxurious and cozy social rooms, lots of deck space, a swimming pool and many other features.

In the places visited where hotels are used they will be first class. Sightseeing will be in the best conveyances obtainable locally. Native guides, as well as the services of the American Express Company local staffs, will augment our leader's activities, who will remain with the group composing Extension No. 2 during the entire journey.

It is indeed a golden opportunity to join these tours and you will make no mistake by registering early, since accommodations on the steamer are limited. Under "General Arrangements" you will find the requirements governing registration for membership.



## ITINERARY

## Sunday, June 12th

Sail from Los Angeles Harbor at noon on the S.S. "PRESIDENT HOOVER" of the Dollar Steamship Line.

## Monday, June 13th

Arrive San Francisco in the afternoon—*Steamer Your Hotel*.

## Friday, June 17th

Sail from San Francisco at 4:00 P. M.

## Thursday, June 23rd

In HONOLULU—Arrive at 6:00 A. M. Morning automobile drive to the Aquarium, past Diamond Head, Maunaloa Bay, thru Manoa Valley, ascend Round Top and continue to Tantalus for a magnificent view of the surrounding points of interest. Return via Punchbowl and thru the Portuguese section. Luncheon at the Royal Hawaiian Hotel.

The afternoon may be spent bathing and surf riding on Waikiki Beach.

Transfer to the steamer and sail at 6:00 P. M.

## Monday, July 4th

Arrive Yokohama, Japan, at 6:00 A. M. Automobile drive to Kamakura. Lunch at the Kaihin Hotel and then visit the giant Daibutsu or Bronze Buddha and return to Yokohama. Sail from Yokohama at 6:00 P. M.

## Tuesday, July 5th

Arrive Kobe at 4:00 P. M. Transfer to station and board convenient train for the two-hour ride to Kyoto. Dinner and night at Kyoto.

## Wednesday, July 6th

In KYOTO—*Kyoto Hotel*. Morning excursion by rickshas, with guide, visiting points of interest, including Chionin Temple, Maruyama Park, Kyomidzu Temple, etc. Return by train to KOBE and sail at tide.

## Friday, July 8th

Arrive Shanghai at tide. In SHANGHAI—*Steamer Your Hotel*. Half day excursion by private automobile, with guide, along the International, French and Chinese Bunds to Native City. Visit the Willow Pattern Tea House, Mandarin Gardens, Old Temple, Bazaars, etc. Continue by automobile thru the French Concession to the famous Convent of Siccawei. Proceed to Lungwha Pagoda and

Temple, and via the new Sun Yat Sen Road thru Shanghai's beautiful countryside.

## Saturday, July 9th

Rickshas and guide will be at your disposal for shopping. Luncheon at the Cathay Hotel. Sail from Shanghai at tide.

## Monday, July 11th

Arrive Hongkong at tide. (Dock at Kowloon.)

In HONGKONG—*Steamer Your Hotel*.

Guide will call at the steamer shortly after arrival and arrange transfer to Victoria, where sedan chairs will be taken to Lower Peak Tram Station. Thence by funicular to the Peak Station for the marvelous view over the surrounding territory. Return to the Hongkong Hotel for luncheon.

## Tuesday, July 12th

A morning drive will be made by automobile around the Island, via the Garden Road and Aberdeen Road to Repulse Bay. Tiffin at the beautiful Repulse Bay Hotel and then continue along the Queen's Road and return.

Afternoon at your disposal.

Sail from Hongkong at 6:00 P. M.

## Thursday, July 14th

Arrive Manila at 7:00 A. M.

In MANILA—*Manila Hotel*.

Morning drive by automobile thru Calle P. Burgos, to the Aquarium, General Luna, Court of Justice, Cathedral of the Immaculate Conception, Escolta, Malacanang Palace and Executive Buildings, etc. and to the Manila Hotel for tiffin.

Afternoon automobile drive to the Cigarette Factory and then to Bilibid Prison. Visit the Sales Department, attend Retreat, and continue thru Azcarraga, past the University of the Philippines, Fort San Antonio Abad, and return.

## Friday, July 15th

Morning drive by automobile thru Santa Ana and along the banks of the Pasig River to the historic ruins of Guadalupe. Thence thru the towns of Pasig, Marikina, San Mateo and Montalban, returning via Fort McKinley. Afternoon at your disposal.

## Saturday, July 16th

Morning without program.

Sail from Manila at 3:00 P. M. on the S.S. "PRESIDENT HOOVER."

## Monday, July 18th

Arrive Hongkong at 6:00 A. M. (Dock at Kowloon.)

In HONGKONG—*Steamer Your Hotel*. After breakfast leave Kowloon by train to Canton, arriving in time for lunch at the Victoria Hotel.

CANTON—After lunch motor tour, with guide, visiting the principal places of interest, including the Flowery Forest Monastery, Chun Ka Chic Temple, Flowery Pagoda, etc.





## STUDENT'S TOUR TO THE ORIENT



Leave Canton by steamer at 4:00 P. M. Arrive Hongkong at 10:30 P. M. and transfer to S.S. "PRESIDENT HOOVER."

### Tuesday, July 19th

Sail from Hongkong at tide.

### Thursday, July 21st

In SHANGHAI—Arrive at tide. Steamer *Your Hotel*. Rickshas and guide will be at passengers' disposal for the day.

### Friday, July 22nd

Sail from Shanghai at tide.

### Sunday, July 24th

In KOBE—Arrive at tide. Steamer *Your Hotel*. Ricksha excursion in the afternoon, with guide, visiting Ikuta Shrine, Nunobiki Waterfall, Daibutsu, Theatre Street and Moto-machi.

### Monday, July 25th

In the morning an excursion will be made by automobile to the beautiful bathing beaches of Suma and Maiko. Sail from Kobe at noon.

### Tuesday, July 26th

Arrive Yokohama at 9:00 A. M.  
By electric train to Tokyo.  
In TOKYO.

Leave the station by automobile for a drive to the Imperial Palace Grounds, Shiba Park and the Mausolea of the Tokugawa Shoguns, Ginza and Nihonbashi Streets, Imperial Museum, Kwannon Temple, etc.  
Luncheon at the Imperial Hotel.

Return in the afternoon by train to YOKOHAMA and sail at 4:00 P. M.

### Wednesday, August 3rd

Arrive Honolulu at 9:00 A. M. Sail from Honolulu at 6:00 P. M.

### Tuesday, August 9th

Arrive San Francisco at 6:00 A. M.

### Thursday, August 11th

Sail from San Francisco at 4:00 P. M.

### Friday, August 12th

Arrive Los Angeles Harbor at 2:00 P. M.

#### Price of Tour:

\$454.00 incl. Special Class on Steamer

## STUDENT'S TOUR TO THE ORIENT

### OPTIONAL No. 1

through

### JAPAN AND CHINA

### Sunday, June 12th to Sunday, July 3rd

Same arrangements as shown in main tour.

### Monday, July 4th

Arrive Yokohama at 6:00 A. M.

Yokohama, the "Gateway" of Japan, abounds with the ancient arts and crafts for which Japan has long been famous.

Automobile will convey you on a drive to Kamakura. Lunch at the Kaihin Hotel and then visit the giant Daibutsu or Bronze Buddha and return to Yokohama. Proceed by evening train to Nikko.

### Tuesday, July 5th

In NIKKO—*Kanaya Hotel*.

Nikko, one of the beauty spots of Japan, is situated at the junction of two mountain streams in a region of high hills and rocky cliffs with innumerable waterfalls.

A morning drive by automobile will be made to the Shinkyo (Sacred Bridge over which only the Emperor or his messengers may pass), to the Mortuary Temples of Takugawa Ieyasu, the Futaarasan Jinja, Three Monkeys, Chinese Gate, Main Shrine, Treasure Museum, etc. After tiffin drive along the avenue of beautiful Cryptomeria trees to Imaichi Station and there take train for Tokyo.

### Wednesday, July 6th

In TOKYO—*Imperial Hotel*.

Sightseeing auto tours will be made on the return journey.

Transfer to the station for morning train to Kyoto. During this journey, majestic Mount Fuji will be in view most of the time, rising gradually from the surrounding low-lands and dominating the entire landscape.

Arrive Kyoto in the evening.

### Thursday, July 7th

In KYOTO—*Kyoto Hotel*.

Kyoto is a city of beautiful Temples, each of which has its fascinating legends and endowment of superlative treasures.

Morning automobile drive visiting Awata Palace, Maruyama Park, Kyomidzu Temple, Sanjusangendo Temple, Kinkakuji Temple, Kitano Shrine, Heian Shrine and Gardens.

Rickshas provided in the afternoon for shopping.

### Friday, July 8th

Morning automobile excursion to beautiful Lake Biwa and return.

Afternoon sightseeing by rickshas will include Kuratani Temple, Silver Pavilion, Eikon-do, Nanzenji Monastery, Satsuma, Damascus and Cloisonne factories.

### Saturday, July 9th

The morning at your disposal.

Leave by afternoon train for Nara, where stay overnight.



STUDENT'S TOUR TO THE ORIENT

Sunday, July 10th

In NARA—*Nara Hotel*.

Nara, the first permanent capital of Japan, is a quaint city abounding with historic monuments and other objects which recall its past power, when, in the eighth century, it was the capital city.

A full day's sightseeing by rickshas will include Nara Park, where you will have opportunity to feed the tame Sacred Deer ("Messengers from Buddha"); then to Kofukuji Temple, Imperial Museum, etc.

Monday, July 11th

Travel by morning train to KOBE and sail at noon for Tientsin.

Friday, July 15th

Arrive Tientsin and proceed by rail to Peiping.

Saturday, July 16th

In PEIPING—*Hotel Wagon-Lits*.

Morning excursion by rickshas, with guide, to the Forbidden City, State Museum, Picture Gallery, and Central Park. Continue by rickshas in the afternoon and visit the Bell Tower, Drum Tower, Hall of Classics, Temple of Confucius and Llama Temple.

Sunday, July 17th

Full day excursion by private automobile, with guide, to the Summer Palace, Jade Fountain, Sleeping Buddha, Temple of the Green Cloud and return.

Monday, July 18th

A full day excursion by automobile and train will be made to the GREAT WALL of China and to the Ming Tombs.

Tuesday, July 19th

Morning sightseeing by rickshas, visiting the Roman Catholic Cathedral, Winter Palace and Coal Hill. Leave by late afternoon train.

Wednesday, July 20th

En route.

Thursday, July 21st

Arrive Pukow and take ferry to Nanking.

In NANKING.

A few hours will be spent in the present National Capital of China. Drive will be made by automobile to the places of interest.

After early tiffin at the Bridge House Hotel, take train leaving at 12:30 P. M. for Shanghai. Arrive Shanghai at 9:25 P. M.

Friday, July 22nd

In SHANGHAI—*Cathay Hotel*.

A morning excursion will be made by automobile via the International, French and Chinese Bunds to Native City. Visit the Willow Pattern Tea House, Mandarin Gardens, Old Temple, Bazaars, Small World, etc. Continue by automobile and drive via the American Community Church to the Convent of Siccawei. Thence proceed to Lungwha Pagoda and Temple thru Shanghai's beautiful countryside, and return.

Transfer to the pier and sail from Shanghai at tide on the S.S. "PRESIDENT HOOVER." Program continued as in main tour.

Price of Tour:

\$625.00 incl. Special Class on Steamer

[7]

STUDENT'S TOUR TO THE ORIENT



OPTIONAL No. 2  
through  
JAPAN, KOREA, MANCHURIA and CHINA

Sunday, June 12th to Sunday, July 3rd

Arrangements as shown in main tour.

Monday, July 4th to Wednesday, July 6th

Arrangements as shown in Japan and China optional.

Thursday, July 7th

In KYOTO—*Kyoto Hotel*.

A full day's sightseeing by rickshas will include Chionin Temple, Maruyama Park, Kyomidzu Temple, Heian Shrine, Zoological Gardens, Higashi Honganji Temple, etc.

Friday, July 8th

Transfer to the station for morning train to Nara, one hour away.

In NARA.

You will be met at the station on arrival by rickshas for an excursion to Nara Park, where you will have opportunity to feed the tame Sacred Deer ("Messengers from Buddha"); then to Kofukuji Temple, Imperial Museum and other places of interest.

Luncheon at Nara Hotel.

Return by afternoon train to Kyoto.

Saturday, July 9th

Leave Kyoto by morning train to Miyajima. Transfer to hotel on arrival.

Sunday, July 10th

In MIYAJIMA—*Miyajima Hotel*.

Miyajima, one of the "Scenic Trio" of Japan, abounds with a colorful variety of scenery, including the Itsukushima Shrine and the giant Torii which towers forty-five

[8]

STUDENT'S TOUR TO THE ORIENT

feet out of the Inland Sea directly in front of the Shrine. As Miyajima is a sacred island, no conveyances are allowed upon it.

Visits will be made on foot to Itsukushima Shrine, Torii, Omoto Park, Maple Valley, Five Storied Pagoda, etc. Leave by late afternoon train to Shimonoseki and thence by night steamer to Fusan.

Monday, July 11th

Arrive Fusan in the morning and continue by rail to Seoul, arriving in the evening.

Tuesday, July 12th

In SEOUL—*Chosen Hotel*.

A full day drive by automobile, with guide, will be made to Keifuku-Kyu, Prince Yi's Household, Fine Art Works, Big Bell, Pagoda Park, Museum, School for Dancing Girls, Namsan Park, Independence Arch, etc.

Wednesday, July 13th

Leave Seoul by morning train.

Thursday, July 14th

Arrive MUKDEN in the morning.

Between trains you will have some time at your disposal. The inner city, circled by great walls and massive gates, dates back many centuries and contains the beautiful Mukden Palace which, from an architectural standpoint, shows a great deal of originality. Continue by late morning train to Peiping.

Friday, July 15th

Arrive Peiping in the morning.

In PEIPING—*Hotel Wagon Lits*.

The massive walls of Peiping, founded more than 3,000 years ago, still stand protectingly around it as if they were endeavoring to protect the ancient arts and crafts for which the city has long been famous. The morning of this day at your disposal.

Afternoon sightseeing by rickshas, with guide, visiting the Temple of Heaven and Temple of Agriculture.

Saturday, July 16th

Morning excursion by rickshas, with guide, to the Forbidden City, State Museum, Picture Gallery and Central Park. Continue in the afternoon by rickshas and visit the Bell Tower, Drum Tower, Hall of Classics, Temple of Confucius and Llama Temple.

Sunday, July 17th

Full day excursion by private automobile, with guide, to the Summer Palace, Jade Fountain, Sleeping Buddha, Temple of the Green Cloud and return.

Monday, July 18th

A full day excursion, with guide, will be made by automobiles and train to the GREAT WALL of China and to the Ming Tombs.

Tuesday, July 19th

Morning sightseeing by rickshas, with guide, visiting the Roman Catholic Cathedral, Winter Palace and Coal Hill. Leave by late afternoon train.

Wednesday, July 20th to Friday, August 12

Same program as Optional No. 1 and main tour.

Price of Tour:

\$690.00 incl. Special Class on Steamer

Based on Minimum Attendance of Ten Persons

[9]

STUDENT'S TOUR TO THE ORIENT

GENERAL ARRANGEMENTS

Registration and Payment:

A deposit of \$50.00 secures registration for the tour. It will be returned if circumstances require cancellation. Final payment is due May 20, 1932.

Steamships:

Accommodation in minimum special class cabin berths of the Dollar Line S.S. "PRESIDENT HOOVER." First class accommodations may be had upon payment of difference in rates.

Railway Travel:

First class throughout, with the exception of certain short sections in Japan where second class is the best available, including sleepers and express supplements.

Sightseeing:

Will be provided as shown in the itinerary.

Hotels:

First class accommodation at hotels as specified in the itinerary, providing for rooms with bath and meals.

Transfers:

Transfer of hand baggage between stations, piers and hotels.

Guides:

In Japan a competent guide will be with the party at all times. Elsewhere local guides will be employed.

Inclusive Price:

Payment for the tours includes all travel expenses so far as these are calculable in advance. It does not, however, include passports and visas, tax on steamship accommodations, gratuities to steamship stewards, cost of laundry, wines, mineral waters or items strictly individual in character.

Passports and Visas:

A passport is absolutely necessary, and the government requires personal application. We shall gladly assist in the securing of necessary visas.

Changes in Itinerary:

The itinerary is offered in good faith and will be adhered to as strictly as possible. If, however, changes are necessitated by alterations in transportation schedules, etc., any resultant increase of cost will be borne by the traveler, and any curtailment of it will be refunded to him. We reserve the right to cancel any of the tours announced herein, in which case the full amount paid for membership will be refunded.

Responsibility:

The American Express Company acts only as agent for the owners or contractors providing vehicles or transportation or other services, and all tickets are issued subject to any and all terms and conditions under which vehicles or transportation or any other services whatsoever are provided or which may be made by such owners or contractors; and the issuance and acceptance of such tickets shall be deemed to be consent to the further condition that neither the American Express Company nor any affiliated or subsidiary company of the American Express System shall be or become liable or responsible in any way in connection with said vehicles or transportation or any other service whatsoever or for any loss, injury or damage to or in respect of any person or property howsoever caused or arising.

The American Express Company assumes no responsibility for baggage, but the management will direct the shipment at "owner's risk" of baggage from place to place, and in the unlikely event of damage, delay or loss, it will do all reasonably within its power to lessen the hardship incurred. Those who wish to insure their baggage may do so through any of our offices.

Travel Funds:

American Express Travelers' Cheques are recommended as Travel Funds. They are accepted in lieu of local currency throughout the world.

For further information or reservations apply to  
offices of the

AMERICAN EXPRESS COMPANY

LOS ANGELES	SAN FRANCISCO
609 W. Seventh Street	Second and Market Streets
SALT LAKE CITY	SAN DIEGO
26 W. Second South Street	San Diego Trust & Sav. Bank
SACRAMENTO	PORTLAND
Weinstock Lubin Company	65 Sixth Street
OAKLAND	
Central National Bank	
B. F. Schlesinger & Sons	
or	
Dr. Harold J. Noble	