

No. 1.

California State Telegraph Company.

The Public are requested to report, by letter, to the Superintendent, at San Francisco, any cause of dissatisfaction.

TERMS AND CONDITIONS ON WHICH MESSAGES ARE RECEIVED, TRANSMITTED, AND DELIVERED.

The public are notified that, in order to guard against neglect or mistakes every message of importance OUGHT to be repeated back, for which service fifty per cent. in addition to the regular tariff will be charged. In case of delay, neglect or mistakes on its own lines, or by its own employees, this Company will refund the amount paid for sending the message, and no more, unless the message be repeated back, and, in that case, the Company will be responsible, for actual damage only, to an amount not exceeding fifty times the sum paid for sending the message; but in no other case will the Company be in any way liable; and in no case will this Company be responsible for interruptions in the working of its telegraphs; nor will it, in any case whatsoever, be responsible for dispatches sent beyond its own lines, or received from other lines, or for any mistake, fault, omission or misconduct of any other Company or person.

THE FOLLOWING MESSAGE IS TRANSMITTED AND DELIVERED, SUBJECT TO THE FOREGOING CONDITIONS, AND NOT OTHERWISE.

JAS. GAMBLE, Superintendent.

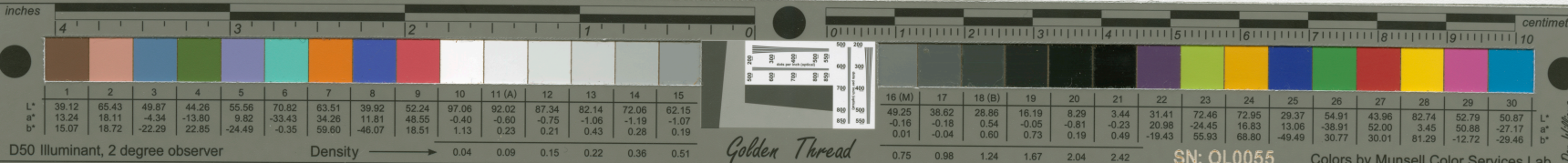
H. W. CARPENTIER, President.

Patterson of Jan 24 1865.

To J S Ruckel Pres

3 40 P.M.

Wright of engine with wood & water
without tender twenty (20) tons cylinder
eleven (11) by eighteen (18) four (4) drivers weight
empty lighter (8) tons Power ^{one} one hundred
foot grade sixty five tons Price ten
thousand five hundred (10500) dollars
tax in gold cash Danforth Cooke & Co
41001 3685



	1	2	3	4	5	6	7	8	9	10	11 (A)	12	13	14	15
L*	39.12	65.43	49.87	44.26	55.56	70.82	63.51	39.92	52.24	97.06	92.02	87.34	82.14	72.06	62.15
a*	13.24	18.11	-4.34	-13.80	9.82	-33.43	34.26	11.81	48.55	-0.40	-0.60	-0.75	-1.06	-1.19	-1.07
b*	15.07	18.72	-22.29	22.85	-24.49	-0.35	59.60	-46.07	18.51	1.13	0.23	0.21	0.43	0.28	0.19



Golden Thread

	16 (M)	17	18 (B)	19	20	21	22	23	24	25	26	27	28	29	30
L*	49.25	38.62	28.86	16.19	8.29	3.44	31.41	72.46	72.95	29.37	54.91	43.96	82.74	52.79	50.87
a*	-0.16	-0.18	0.54	-0.05	-0.81	-0.23	20.98	-24.45	16.83	13.06	-38.91	52.00	3.45	50.88	-27.17
b*	0.01	-0.04	0.60	0.73	0.19	0.49	-19.43	55.93	68.80	-49.49	30.77	30.01	81.29	-12.72	-29.46

SN: OL0055 Colors by Munsell Color Services Lab

