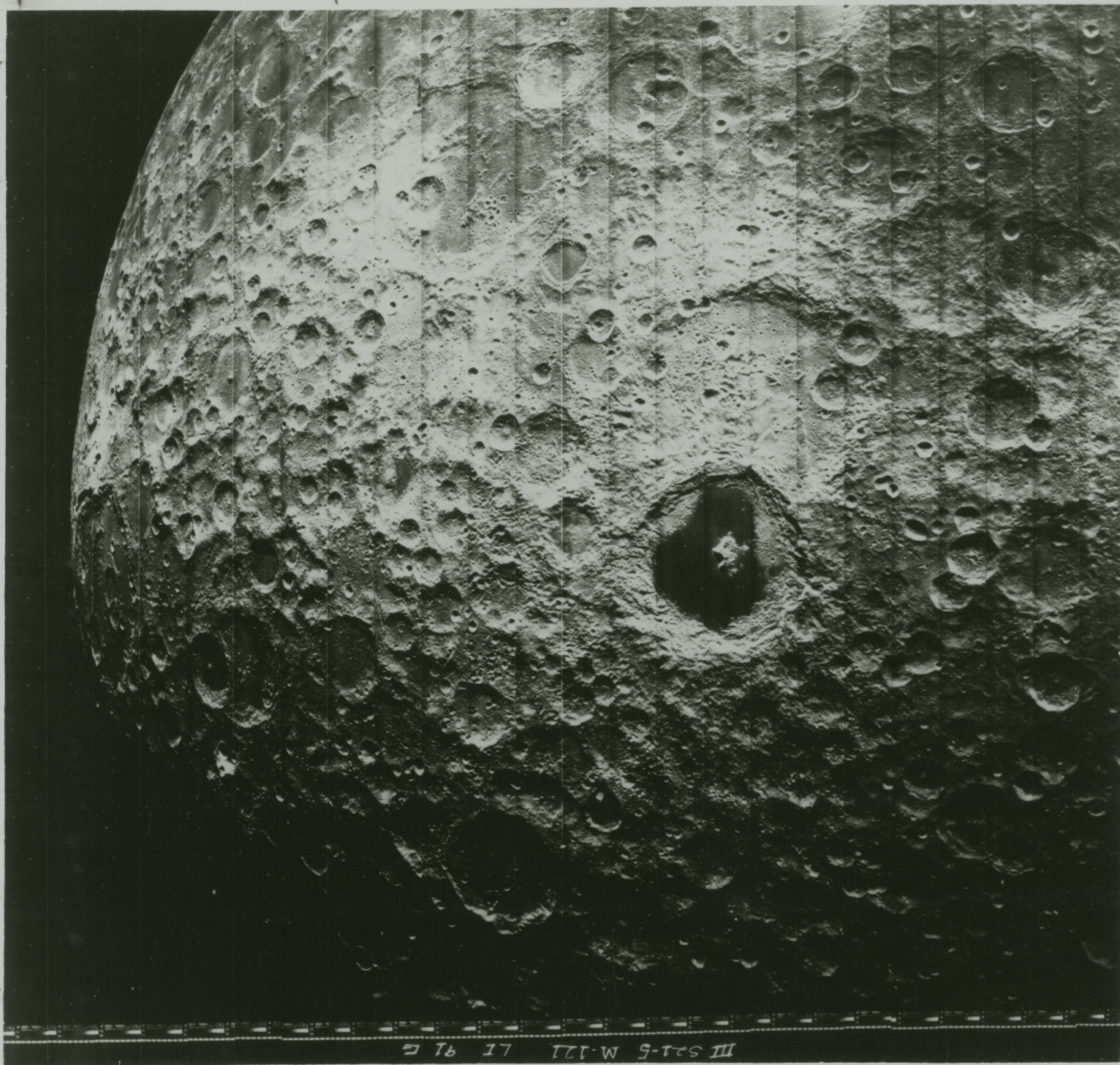
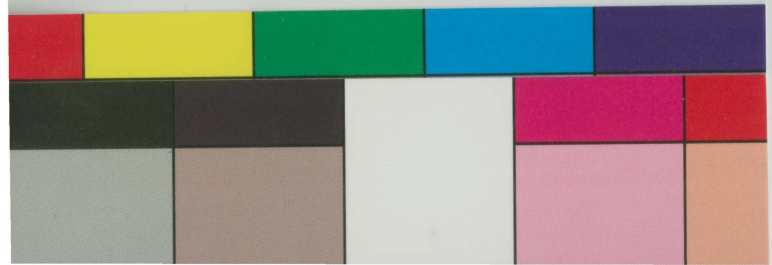


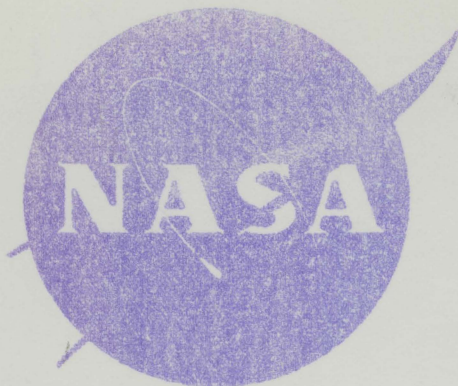
107



III 501-5 M-121 LI 91 E







TOP  
NATIONAL AERONAUTICS AND SPACE ADMINISTRATION  
400 MARYLAND AVENUE, S. W., WASHINGTON, D. C. 20546

FOR RELEASE  
PHOTO NO.: 67-H-328

Fig 10 Pg 39

This photograph is released for non-commercial, non-copyrightable public information use. Written permission must be received from NASA if this photograph is used in advertising, posters, books, etc., and layout must be submitted to NASA for approval prior to release.

29 X 18 1/2  
\$  
from Dr. -  
prominent cup-like features  
on central slope

#### Wide Angle Frame 121

HAMPTON, Va., -- This photograph of the hidden side of the Moon (secondary site 21.5) was taken by the Lunar Orbiter III in its mission to photograph potential manned landing sites on the Moon. This is a single frame taken with the Orbiter's 80mm focal length wide angle camera and is composed of 24 of the 26 framelets which make up a complete wide angle frame. This photograph of the far side of the Moon was taken on Feb. 19, 1967. The photograph was taken from an altitude of approximately 900 miles at a position 250 miles south of the lunar equator at a longitude of about 125° E looking almost due south. The curved southern horizon stretches to within about 400 miles of the south pole. The picture spans approximately 700 miles along its northern edge near the equator. The sun is on the left, and the terminator is on the right. The prominent crater filled with the dark material near the center of the photograph is about 150 miles in diameter. Over much of its circumference the rim of this crater has slumped inward in a manner similar to that observed in many places in the lunar frontside craters. The Lunar Orbiter is managed for the National Aeronautics and Space Administration by the Langley Research Center, Hampton, Va. The Boeing Company, Seattle, is the prime contractor.

crater features

14/8