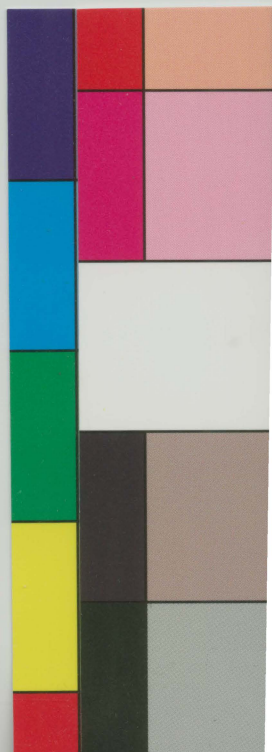
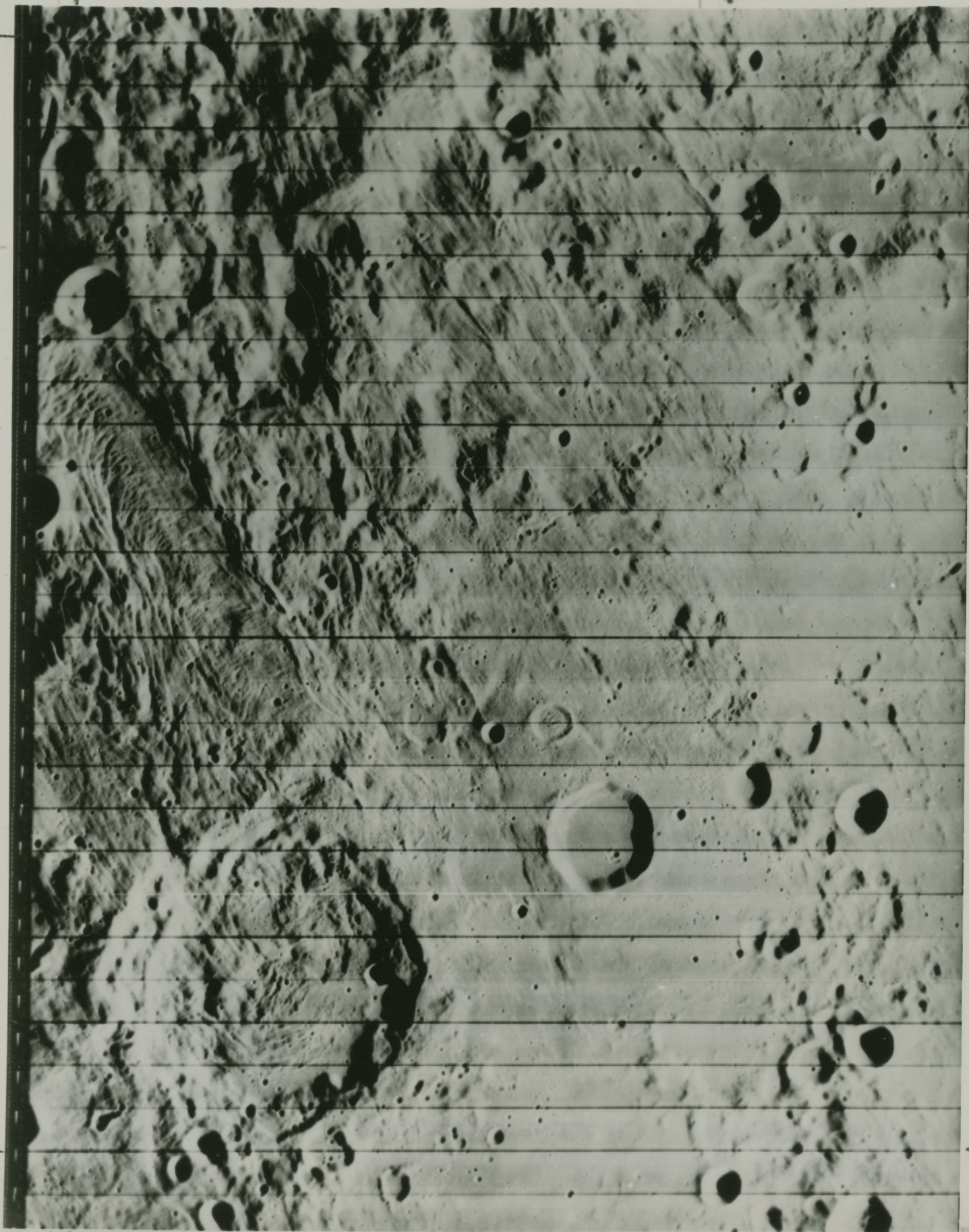
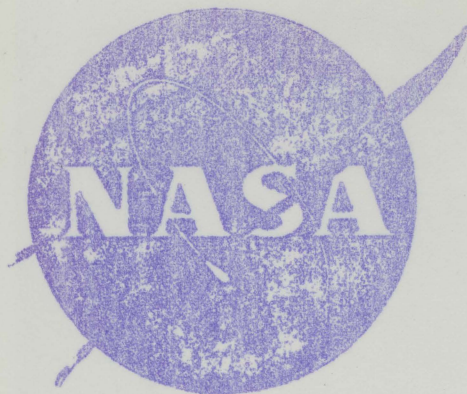


TOP





(21)

NATIONAL AERONAUTICS AND SPACE ADMINISTRATION
400 MARYLAND AVENUE, S. W., WASHINGTON, D. C. 20546

FOR RELEASE: Immediate - June 2, 1967
PHOTO NO. 67-H-936

This photograph is released for non-commercial, non-copyrightable public information use. Written permission must be received from NASA if this photograph is used in advertising, posters, books, etc., layout and copy must be submitted to NASA for approval prior to release.

L-67-4827

TELEPHOTO FRAME 172

HAMPTON, Va., -- This is a portion of the National Aeronautics and Space Administration's Lunar Orbiter IV telephoto frame 172 taken by the spacecraft on its thirty-first orbit during its broad photographic survey of the Moon. When this frame was exposed, the spacecraft was travelling in a northerly direction which is towards the top of the picture when the edge data are positioned on the left. The spacecraft altitude was 1870 miles above the lunar surface. The approximate selenographic coordinates for the center of the area shown are 68° West, 43° South. The large crater in the lower left-hand corner of the picture is Inghirami which is about 57 miles across its diameter.

Box 34

27 by

from BK.
Planetary Explorations
by Carl Sagan
Cameron Lectures

27 by
1967

PHOTO CREDIT -- NASA or National Aeronautics and Space Administration

TRP

21