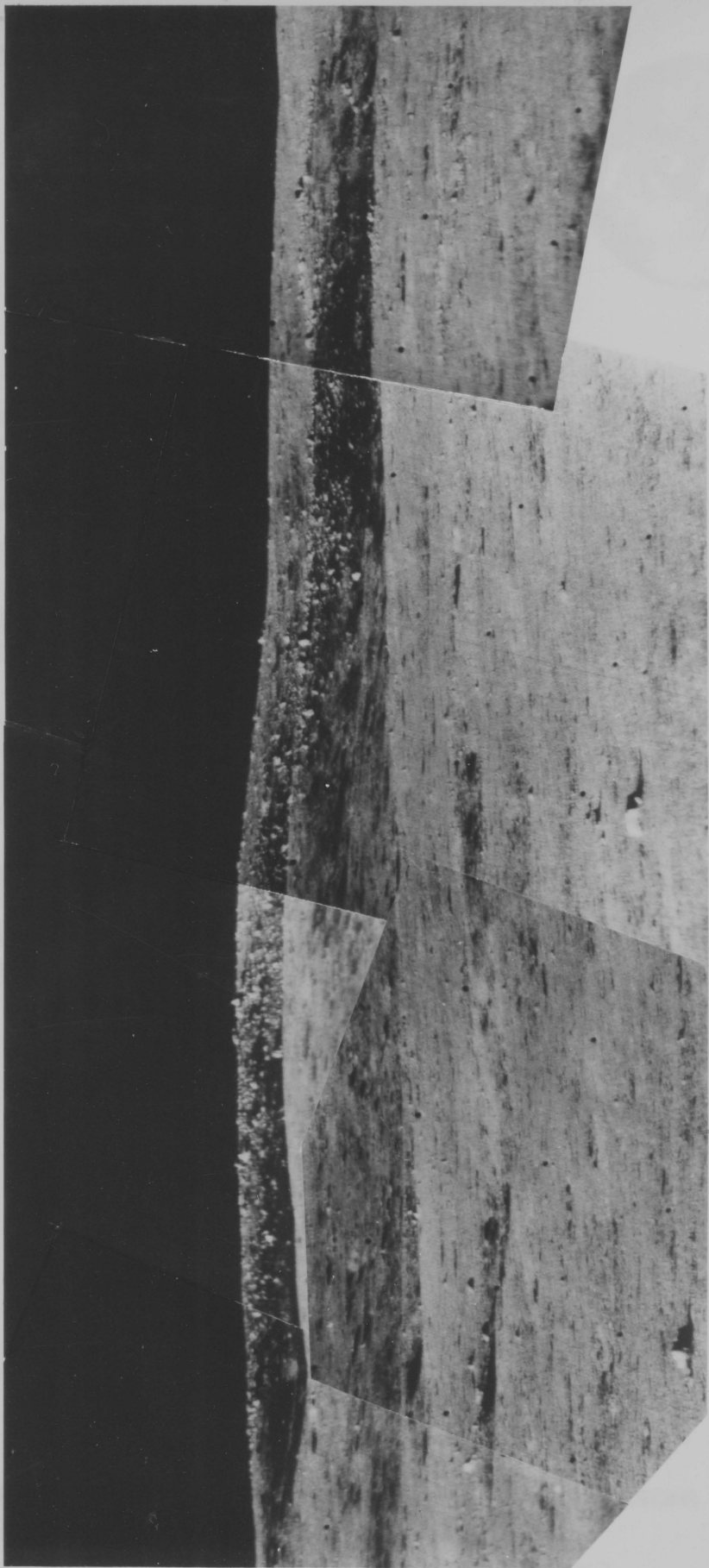


TOP



24



NATIONAL AERONAUTICS AND SPACE ADMINISTRATION
400 MARYLAND AVENUE, S. W., WASHINGTON, D. C. 20546

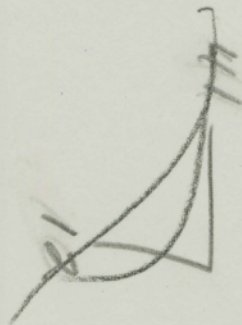
FOR RELEASE:
PHOTO NO. 67-H-1551

This photograph is released for non-commercial, non-copyrightable public information use. Written permission must be received from NASA if this photograph is used in advertising, posters, books, etc., layout and copy must be submitted to NASA for approval prior to release.

SURVEYOR VI - 7
November 11, 1967

Five-frame mosaic of the lunar terrain near Surveyor VI shows a strewn field of rocks, the source of which is not seen. The rocks, some as large as 1.5-2 feet across, probably were thrown out of a crater beyond the horizon and to the left. They are scattered over the two subdued craters seen below the horizon. The horizon is formed by a low ridge which trends northeast across the surface of the Moon's central bay (Sinus Medii) and is one of a family of typical lunar mare ridges. Each of the pictures, taken during a narrow-angle sequence on November 10 covers a field of view of six degrees.

from BK.
Planetary Exploration
by Carl Sagan
Candon Lectures



4 1/2 x 12 1/2

Fig. 2A
TOP

pg 43