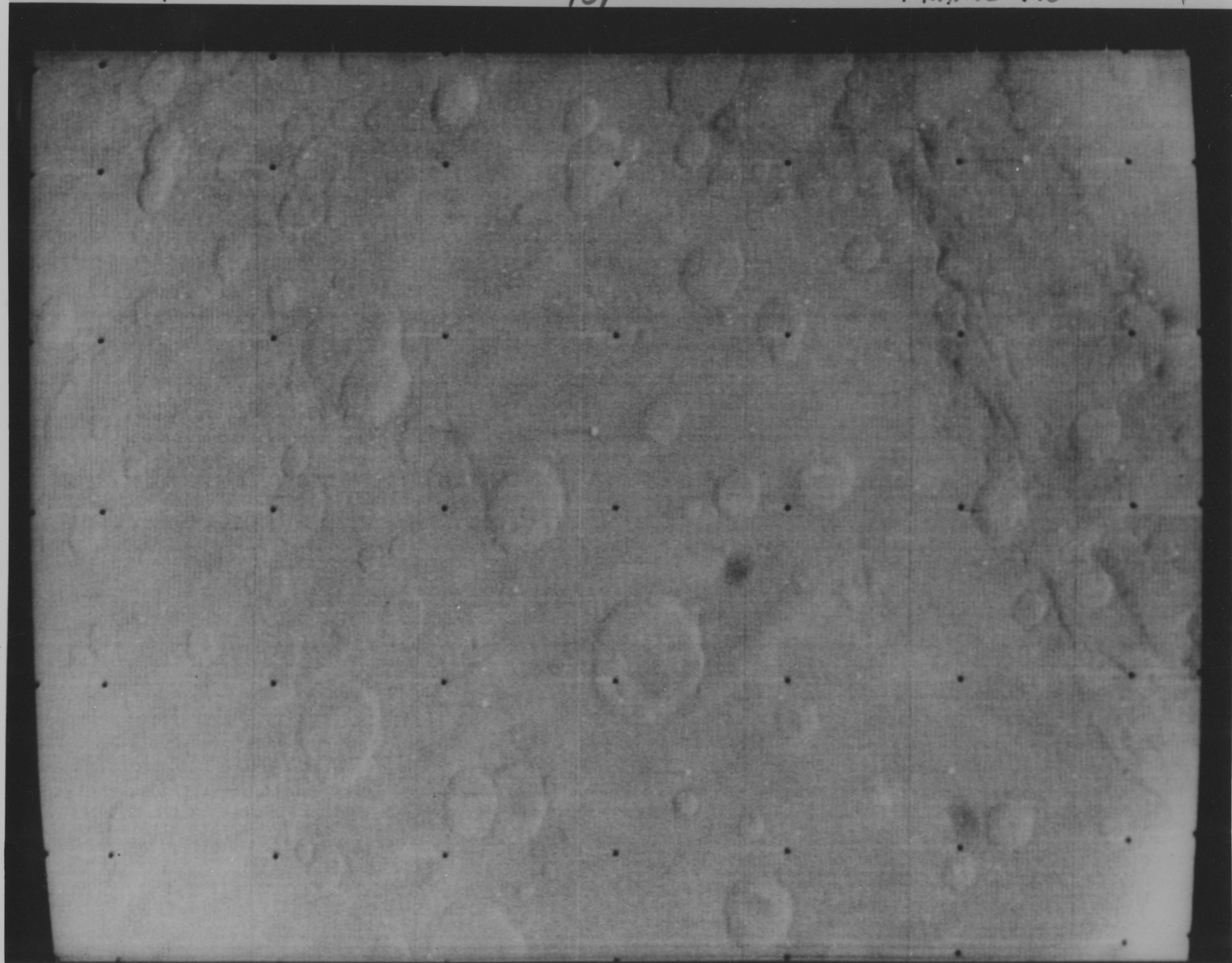
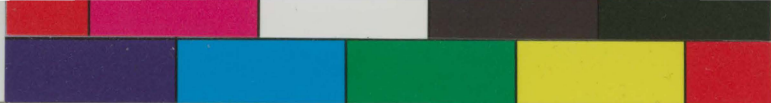


MAR. 7

TOP

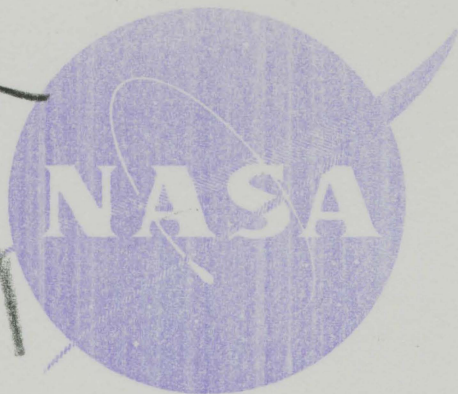
FRAME 118





4 1/2 x 2 1/2

TOP



NATIONAL AERONAUTICS AND SPACE ADMINISTRATION
WASHINGTON, D. C. 20546

FOR RELEASE: IMMEDIATE
PHOTO NO. 69-H-1407

This photograph is a government publication -- not subject to copyright.
It may not be used to state or imply the endorsement by NASA or by any NASA employee of a commercial product, process or service, or used in any other manner that might mislead. Accordingly, it is requested that if this photograph is used in advertising, posters, books, etc., layout and copy be submitted to NASA prior to release.

Mariner 7 - 118 (near encounter #25)

Mariner 7 near encounter picture 25 is the first of a series of three wide-angle and one narrow-angle view of the Hellespontus and Hellas regions. The cratered region covering most of the picture to the west (right) is the dark Hellespontus. An apparent escarpment to the east forms the boundary of the light region Hellas. The area covered by this wide-angle frame is approximately 450 by 600 statute miles. The picture was taken using a blue filter. Large scale variations in surface brightness have been suppressed by the camera system and will be restored by computer processing of the data. The TV experiment team is headed by R.B. Leighton of Caltech.

Fig. 28
6751

from BK:

Planetary Exploration

by Carl Sagan

Condon lectures

~~41~~
20

10