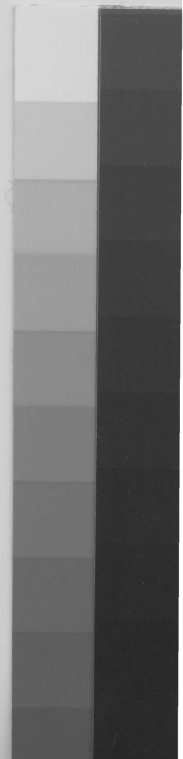
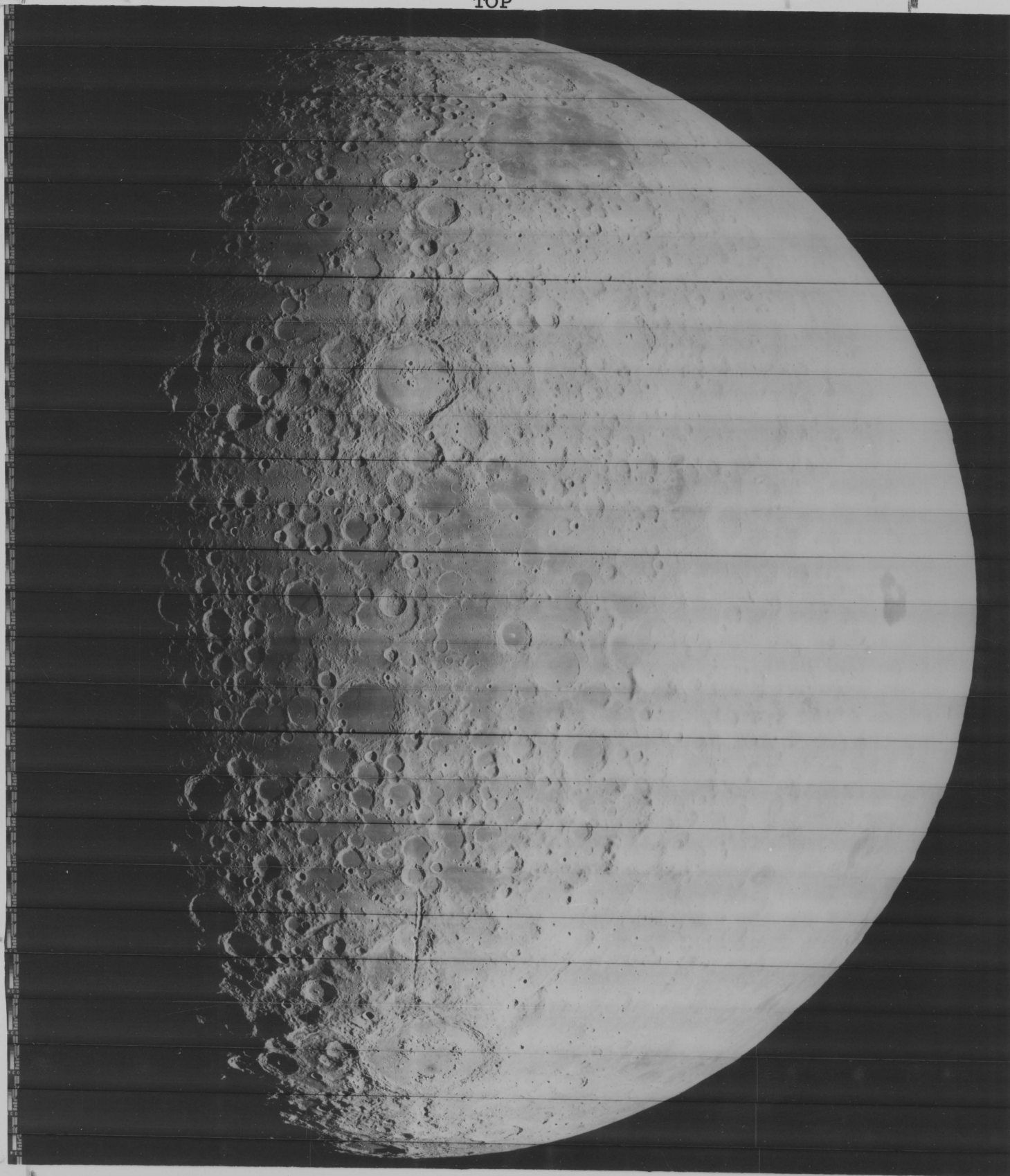


TOP





TOP

NATIONAL AERONAUTICS AND SPACE ADMINISTRATION
400 MARYLAND AVENUE, S. W., WASHINGTON, D. C. 20546

Fig. 9

FOR RELEASE: Filed May 15, 1967
PHOTO NO. 67-H-745

23 1/2 x 18 1/2

pg 39

23
18

This photograph is released for non-commercial, non-copyrightable public information use. Written permission must be received from NASA if this photograph is used in advertising, posters, books, etc., layout and copy must be submitted to NASA for approval prior to release.

PASADENA, Calif., -- LUNAR ORBITER IV - 2 -- This wide angle photograph was taken by NASA's Lunar Orbiter IV on May 11 at 9:25 a.m. PDT and received at the Goldstone Deep Space Net Tracking station at 12:45 p.m. PDT on May 12. The spacecraft was 1850 miles above the lunar surface at the time of photography. When viewing the photograph with the edge data on the left, north is at the top and the sun is from the right. The photograph is centered on the eastern limb approximately half way between the equator and the South Pole. The terminator is seen falling across the lunar surface to the left and the horizon is at the right. A large portion of the eastern limb and far side is shown including the South Polar region at the bottom. It is wide angle frame 11 of the Lunar Orbiter photographic series. Lunar Orbiter IV, one of a series of National Aeronautics and Space Administration spacecraft, is making a photographic survey of 95% of the entire lunar surface. The Lunar Orbiter program is managed for NASA by the Langley Research Center, Hampton, Virginia. The Boeing Company, Seattle, Washington, is prime spacecraft contractor.

from BL.

Planetary Exploration
by Carl Sagan
Cordon Lectures

20 3/4

PHOTO CREDIT -- NASA or National Aeronautics and Space Administration