



JAPAN *in Figures*
2007

STATISTICS BUREAU
Ministry of Internal Affairs and Communications, JAPAN

Preface

This publication is designed to serve as a convenient booklet for statistical reference on Japan, covering demographic, economic, social, cultural fields, etc. The data are also available on the website (<http://www.stat.go.jp/english/data/figures/index.htm>).

For further statistical information on Japan, we recommend reference to the *Japan Statistical Yearbook* and the *Japan Monthly Statistics*, both of which are prepared in Japanese and English by the Statistics Bureau, Ministry of Internal Affairs and Communications.

November 2006

Remarks

1. Unless otherwise indicated, "year" refers to the calendar year and "fiscal year" refers to the 12 months beginning on April 1 of the year stated.
2. Metric units are used in all tables and figures.
3. Figures may not add up to totals because of rounding or omitted data.
4. "Billion" stands for a thousand million, and "trillion" stands for a thousand billion.
5. "Statistics Bureau, MIC" refers to the Statistics Bureau of the Japanese Government. "MIC" refers to the Ministry of Internal Affairs and Communications.
6. The following symbols are used in the tables:
 - ... Not available
 - Not applicable
 - * Provisional
 - # Marked break in series

Cover photo: *Dai-Kodo*, the Great Lecture Hall at *Enryakuji*-temple

Enryakuji-temple was founded by *Saicho* more than 1,200 years ago, in 788. The grounds of the temple encompass the entire mountain of *Hieizan*, and are spotted with numerous halls and pagodas extending from the top down to the eastern foot of the mountain. In 1994, *Enryakuji*-temple, located in *Otsu-shi*, *Shiga-ken*, together with other temples and shrines in Kyoto, were inscribed on the World Heritage list as "Historic monuments of ancient Kyoto."

(by Sebun Photo Co., Ltd.)

Contents

Land	1. National Surface Area and Number of Islands	1
	2. Surface Area, by Use	1
	(Figure) Map of Japan	2
	(Figure) Temperature and Precipitation	2
Population and Households	3. Components of Population Change	3
	4. Population, by Age Group	4
	5. Population Projections	5
	6. Projections of Total Population, and Elderly Population	5
	(Figure) Population Pyramid	6
	7. World Population Projections—United Nations Estimates	7
	8. Households and Household Members	9
	9. Households, by Family Type	9
	10. Population of Major Cities	10
	11. Vital Statistics	10
	12. Registered Foreigners in Japan	11
	13. Japanese Living Abroad	11
	14. Persons Legally Entered or Departed from Japan	11
	National Accounts	15. Gross Domestic Expenditure

Finance	16. Currency and Deposits	13
	17. Principal Interest Rates and Stock Prices	14
	18. Basic Discount Rates and Basic Loan Rates	14
Government Finance	19. Settlement of General Account	15
Economic Conditions	20. Economic Conditions	16
Business Activities	21. Number of Privately Owned Establishments, by Type of Legal Organization and Industry	17
	22. Sales and Operating Profits-Sales Ratios of Corporations	17
	23. Sales per Individual Proprietorship	17
Agriculture, Forestry, and Fisheries	24. Production Indices	18
	25. Farm Households and Farm Household Population	18
	26. Supply and Demand of Food	19
Manufacturing	27. Production of Selected Industrial Products	20
Energy	28. Primary Energy Supply	22
	29. Per Capita Consumption and Dependency on Imports of Primary Energy, by Country	22

	30. Volume of Imports, by Principal Import Partners	23
	31. Oil Reserve and Days Equivalence	23
	32. Electric Power Consumption	23
Science and Technology/Information and Communication	33. Telecommunications Services	24
	34. Internet Subscribers in Japan	25
	35. Purchases of Goods and Services through Internet	25
	36. Ratio of Enterprises Using Electronic Commerce	25
	37. Research and Development Expenditures	26
	38. Persons Engaged in Research and Development	27
Transportation	39. Transportation	28
Domestic Trade and Services	40. Wholesale and Retail Trade	29
	41. Large Retail Stores and Convenience Stores	29
	42. Service Industries—Number of Establishments	30
	43. Service Industries—Annual Receipts	30
Foreign Trade, Balance of Payments, and International Cooperation	44. Value of Exports, by Country/Region	31
	45. Value of Imports, by Country/Region	31
	46. Value of Exports, by Principal Commodities	32
	47. Value of Imports, by Principal Commodities	33

48. Foreign Trade Indices	34
49. Foreign Exchange Rates	34
50. Balance of Payments and Reserve Assets	35
51. Value of Direct Investment Abroad	36
52. ODA as Percentage of GNI	36
53. Net Flow of Development Cooperation	37

Labor and Wages

54. Selected Employment Indicators	38
55. Unemployment Rates	38
(Figure) Changes in Employed Persons and Unemployment Rate	39
56. Labor Force Status	40
57. Employed Persons, by Employment Status	40
58. Employed Persons, by Industry	41
59. Employed Persons, by Occupation	42
60. Wages — Average Monthly Cash Earnings	
of Regular Employees, by Industry	43
61. Working Hours — Average Monthly Hours Worked	
by Regular Employees, by Industry	43

Prices

62. Price Indices	44
(Figure) Consumer Price Index	45
63. Annual Percent Changes in Consumer Price Index, by Major Groups	46

	64. Annual Percent Changes in Consumer Price Index, by Country	46
	65. Annual Percent Changes in Producers' or Wholesale Price Indices, by Country .	47
	66. Purchasing Power Parities	47
Housing	67. Number of Dwellings and Housing Conditions	48
Household Finances	68. Average Monthly Consumption Expenditures of All Households	49
	69. Average Monthly Receipts and Disbursements of Workers' Households	50
	70. Average Annual Income and Expenditures of Commercial Farm Households	51
	71. Household Penetration of Selected Durable Consumer Goods	51
	72. Average Amount of Savings and Debts of Workers' Households	52
	73. Average Assets of All Households	52
Social Security	74. Social Security Benefit Expenditures, by Sector	53
	75. Social Security Benefit Expenditures, by Institutional Scheme	54
	76. Number of Persons Insured under Public Pension	55
	77. Social Welfare Institutions	56
Health and Sanitation	78. Medical Care Expenditure Estimates	57
	79. Medical Institutions and Personnel	58
	80. Deaths, by Major Cause	58

Education	81. Schools, Teachers and Students	59
	82. Ratio of Persons Advanced to Higher Levels of Education	60
	83. Overseas Students, by Country/Region	60
Culture	84. Publications and Newspapers	61
	85. Yearly Amount of Reading and Recreational Expenditures	62
	86. Time Use per Day, by Age Group	63
	87. Participation Rates in Travel	64
Crime	88. Penal Code Offenses and Special Law Offenses	65
	89. Traffic Violations	66
Environment	90. Emissions of Green House Gas in Japan	67
	91. Breakdown of Carbon Dioxide Emissions in Japan	67
	92. CO ₂ Emissions from Energy Use	68
	93. Residential Waste Generation and Disposal	69
Disasters and Accidents	94. Disasters	70
	95. Accidents	70
Comparative International Statistics	96. Comparative International Statistics	71

Land

1. National Surface Area and Number of Islands

[As of October 1, 2005]

District	Area (km ²)	Percent distribution	Number of islands 1)
Japan	377,915	100.0	6,852
Hokkaido	83,456	22.1	509
Honshu	2) 231,100	61.2	3,194
Shikoku	2) 18,790	5.0	626
Kyushu	42,177	11.2	2,160
Okinawa	2,275	0.6	363

1) Islands with a length of coastline of 0.1 km and over. 2) Excluding the areas (117.83 km²) of which boundaries are not yet fixed.

Source: Ministry of Land, Infrastructure and Transport.

2. Surface Area, by Use

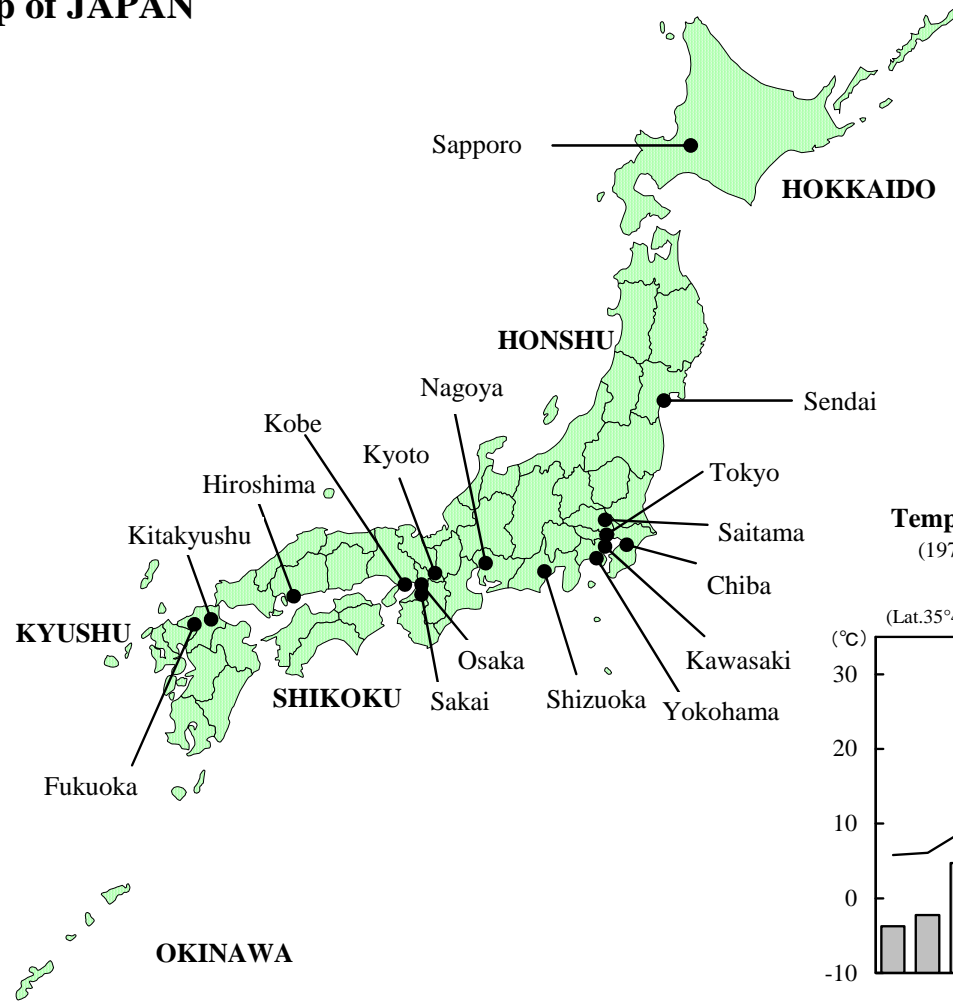
[In 1,000 square kilometers]

Year	Total	Farmland	Forest and grassland	Inland water	Roads 1)	Buildup land 2)	Other
1990	377.7	53.3	255.2	13.1	11.4	16.0	28.7
1995	377.8	51.3	254.0	13.2	12.1	17.0	30.3
2000	377.9	49.1	253.8	13.5	12.7	17.9	30.9
2004	377.9	48.1	253.6	13.3	13.1	18.3	31.6
Percent distribution	100.0	12.7	67.1	3.5	3.5	4.8	8.4

1) Including farm roads and forest roads, etc. 2) Including industrial land and other land for building.

Source: Ministry of Land, Infrastructure and Transport.

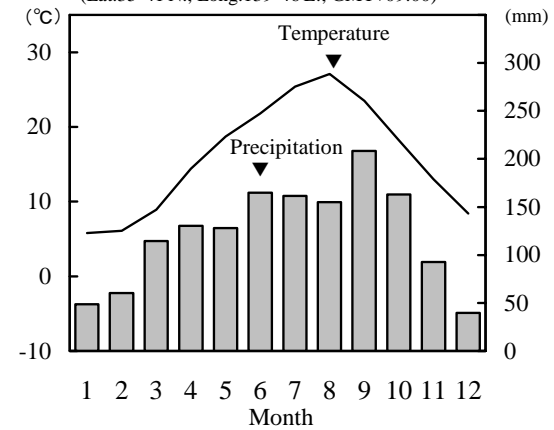
Map of JAPAN



Temperature and Precipitation
(1971 – 2000 average)

Tokyo

(Lat.35°41'N., Long.139°46'E.; GMT+09:00)



Source: Japan Meteorological Agency.

Population and Households

3. Components of Population Change: 1930 to 2005

[In thousands]

Year	Total population			Net increase 2)	Natural increase		Migration change	
	1)	Male	Female		Live births	Deaths	Entry to Japan	Departure from Japan
1930	64,450	32,390	32,060
1940	71,933	35,387	36,546
1950	84,115	41,241	42,873
1955	90,077	44,243	45,834	5,959	9,806	3,870	367	323
1960	94,302	46,300	48,001	4,225	8,256	3,580	836	922
1965	99,209	48,692	50,517	4,908	8,420	3,477	2,031	2,072
1970	104,665	51,369	53,296	5,455	9,051	3,451	3,342	3,330
1975	111,940	55,091	56,849	7,274	10,208	3,521	10,107	10,162
1980	117,060	57,594	59,467	5,121	8,656	3,514	18,533	18,576
1985	121,049	59,497	61,552	3,989	7,559	3,668	23,191	23,180
1990	123,611	60,697	62,914	2,562	6,602	3,923	42,287	42,340
1995	125,570	61,574	63,996	1,959	6,107	4,368	65,920	65,990
2000	126,926	62,111	64,815	1,356	6,019	4,703	88,076	88,011
2004	127,687	62,295	65,392	3) 761	4) 1,126	4) 1,024	4) 17,673	4) 17,709
2005	127,756	62,065	65,691	830	4) 1,087	4) 1,078	4) 18,951	4) 19,004

1) As of October 1. Data refer to the population census, except for the 2004 data which are the estimated population. 2) Data refer to increase over the preceding census. 3) Data refer to increase between 2000-2004. 4) Net increase over the previous year.

Source: Statistics Bureau, MIC; Ministry of Health, Labour and Welfare; Ministry of Justice.

Population and Households

4. Population, by Age Group

[As of October 1. Data refer to the population census; data for 2004 are estimated population]

Year	Population by age group (1,000)			Percent distribution			
	Under 15 years	15 to 64	65 and over	Under 15 years	15 to 64	65 and over	75 and over
1930	23,579	37,807	3,064	36.6	58.7	4.8	1.4
1940	26,369	43,252	3,454	36.1	59.2	4.7	1.2
1950	29,786	50,168	4,155	35.4	59.6	4.9	1.3
1955	30,123	55,167	4,786	33.4	61.2	5.3	1.5
1960	28,434	60,469	5,398	30.2	64.1	5.7	1.7
1965	25,529	67,444	6,236	25.7	68.0	6.3	1.9
1970	25,153	72,119	7,393	24.0	68.9	7.1	2.1
1975	27,221	75,807	8,865	24.3	67.7	7.9	2.5
1980	27,507	78,835	10,647	23.5	67.3	9.1	3.1
1985	26,033	82,506	12,468	21.5	68.2	10.3	3.9
1990	22,486	85,904	14,895	18.2	69.5	12.0	4.8
1995	20,014	87,165	18,261	15.9	69.4	14.5	5.7
2000	18,472	86,220	22,005	14.6	67.9	17.3	7.1
2004	17,734	85,077	24,876	13.9	66.6	19.5	8.7
2005	17,400	83,373	26,820	13.6	65.3	21.0	9.5

Source: Statistics Bureau, MIC.

Population and Households

5. Population Projections

[Medium-variant projections as of January 2002]

Year	Total (1,000)	Percentage by age group				
		Male	Female	Under 15 years	15 to 64 years	65 years and over
2010	127,473	61,932	65,541	13.4	64.1	22.5
2020	124,107	59,766	64,341	12.2	60.0	27.8
2030	117,580	56,121	61,459	11.3	59.2	29.6
2040	109,338	51,851	57,487	11.0	55.8	33.2
2050	100,593	47,526	53,068	10.8	53.6	35.7

Source: Ministry of Health, Labour and Welfare.

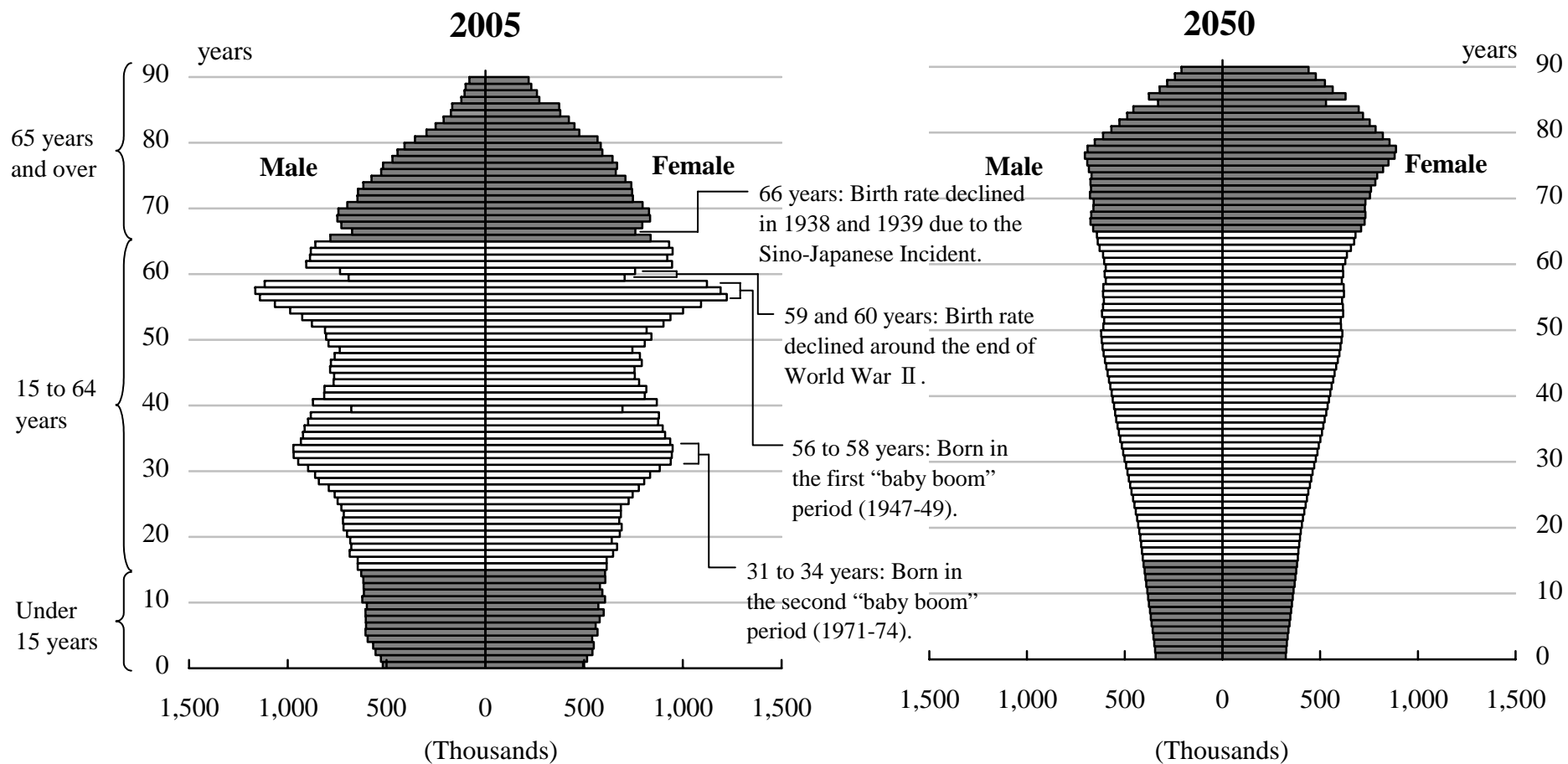
6. Projections of Total Population, and Elderly Population

[Medium-variant projections as of January 2002]

Item	Year	Maximum figure
Total population	2006	127,740,000
Elderly population (65 years and over)	2043	36,470,000 (34.2% of total population)
Highest percentage for elderly population	2050	35.7% (elderly population: 35,860,000)

Source: Ministry of Health, Labour and Welfare.

Population Pyramid (As of October 1)



Source: Statistics Bureau, MIC; Ministry of Health, Labour and Welfare.

Population and Households

7. World Population Projections - United Nations Estimates (The 2004 revision)

[Medium-variant projections. More developed regions comprise Japan, Canada, U.S.A., Europe, Australia, and New Zealand. Less developed regions comprise Asia (excluding Japan), North America (excluding Canada and U.S.A.), South America, Africa, and Oceania (excluding Australia and New Zealand)]

Region or country	Total population (1,000)			Average annual rate of increase (2000-2005) (%)	Percentages by age group in 2010		
	2000	2010	2025		Under 15 years	15 to 64	65 and over
World total	6,085,572	6,842,923	7,905,239	1.21	26.8	65.5	7.7
More developed regions	1,193,354	1,225,678	1,248,954	0.30	16.4	67.7	15.9
Less developed regions	4,892,218	5,617,246	6,656,285	1.43	29.1	65.0	5.9
Asia	3,675,799	4,130,383	4,728,131	1.21	25.9	67.2	6.9
Japan	127,034	128,457	124,819	0.17	13.7	63.8	22.4
Bangladesh	128,916	154,960	193,752	1.91	33.2	63.0	3.9
China	1,273,979	1,354,533	1,441,426	0.65	19.5	72.2	8.3
India	1,021,084	1,183,293	1,395,496	1.55	29.9	64.4	5.7
Indonesia	209,174	235,755	263,746	1.26	26.8	67.2	6.0
Iran	66,365	74,283	89,042	0.93	25.2	70.3	4.5
Korea, Rep. of	46,779	48,566	49,457	0.44	15.8	72.9	11.3
Pakistan	142,648	175,178	229,353	2.04	35.8	60.2	4.0
Philippines	75,766	90,048	109,084	1.84	32.4	63.2	4.3
Thailand	61,438	66,785	72,635	0.89	22.3	69.7	8.0
Turkey	68,234	78,081	90,565	1.40	27.6	66.7	5.7
Viet Nam	78,671	89,718	104,343	1.37	26.3	68.3	5.4

Population and Households

7. World Population Projections - United Nations Estimates (The 2004 revision) (Cont.)

Region or country	Total population (1,000)			Average annual rate of increase (2000-2005) (%)	Percentages by age group in 2010		
	2000	2010	2025		Under 15 years	15 to 64	65 and over
North America 1)	488,463	544,288	618,373	1.13	23.2	66.3	10.5
Canada	30,689	33,680	37,797	1.00	16.0	69.8	14.2
Mexico	100,088	113,271	129,381	1.34	28.0	65.9	6.1
U.S.A.	284,154	312,253	350,103	0.97	20.0	67.2	12.8
South America 2)	349,434	400,544	466,200	1.42	27.6	65.5	6.9
Brazil	173,858	198,497	227,930	1.39	26.8	66.4	6.8
Europe	728,463	725,786	707,235	-0.00	15.2	68.5	16.2
France	59,278	61,535	63,407	0.41	18.0	65.1	16.9
Germany	82,344	82,701	81,967	0.08	13.4	66.2	20.4
Italy	57,715	58,176	56,307	0.13	13.7	65.2	21.1
Russia	146,560	140,028	129,230	-0.46	15.4	72.0	12.6
Ukraine	49,116	44,128	37,335	-1.10	13.4	70.5	16.2
U.K.	58,670	60,517	63,663	0.34	16.9	66.6	16.5
Africa	812,466	1,006,905	1,344,491	2.18	40.5	56.0	3.5
Egypt	67,285	81,133	101,092	1.91	32.5	62.5	5.0
Ethiopia	68,525	86,998	118,354	2.44	43.0	53.9	3.1
Nigeria	117,608	145,991	190,287	2.24	42.9	54.0	3.1
Oceania	30,949	35,017	40,809	1.32	23.3	66.0	10.7
Australia	19,071	21,201	24,329	1.11	18.3	68.0	13.7

1) Including Caribbean and Central America. 2) Including Falkland Islands (Malvinas) and French Guiana.

Source: United Nations.

Population and Households

8. Households and Household Members

[As of October 1. Excluding institutional households]

Year	Households by number of household members (10,000)						Household members (10,000)	Members per household (person)
	Total	1 person	2	3	4	5 and over		
1990	4,067	939	837	735	879	677	12,155	2.99
1995	4,390	1,124	1,008	813	828	617	12,365	2.82
2000	4,678	1,291	1,174	881	792	539	12,472	2.67
2005	4,822	1,333	1,305	923	778	484	12,524	2.60
Percent distribution	100.0	27.6	27.1	19.1	16.1	10.0	-	-
Percent change, 2000-2005	3.1	3.2	11.1	4.7	-1.8	-10.2	0.4	1) -0.07

1) Change, 2000-2005.

Source: Statistics Bureau, MIC.

9. Households, by Family Type

[In 10 thousands. As of October 1]

Year	Total	Nuclear families				One-person households	Other	Households with elderly person(s) 1)	Elderly couple 2)	Elderly single-person
		Total	Married couple only	Couple with child(ren)	Parent and child(ren)					
1990	4,067	2,422	629	1,517	275	939	706	1,073	197	162
1995	4,390	2,576	762	1,503	311	1,124	690	1,278	276	220
2000	4,678	2,733	884	1,492	358	1,291	654	1,504	366	303
2005	4,822	2,840	966	1,464	410	1,333	649	1,798	...	405
Percent distribution	100.0	58.9	20.0	30.4	8.5	27.6	13.5	37.3	...	8.4
Percent change, 2000-2005	3.1	3.9	9.3	-1.9	14.7	3.2	-0.7	19.5	...	33.5

1) Elderly person: 65 years of age and over. 2) Households consisted of a husband (65 years and over) and his wife (60 years and over).

Source: Statistics Bureau, MIC.

10. Population of Major Cities

[In thousands. As of October 1]

City	2000	2005	City	2000	2005
Japan	126,926	127,756	Kyoto- <i>shi</i>	1,468	1,475
Tokyo 1)	8,135	8,483	Fukuoka- <i>shi</i>	1,341	1,401
Yokohama- <i>shi</i>	3,427	3,579	Kawasaki- <i>shi</i>	1,250	1,327
Osaka- <i>shi</i>	2,599	2,628	Saitama- <i>shi</i>	-	1,176
Nagoya- <i>shi</i>	2,172	2,215	Hiroshima- <i>shi</i>	1,126	1,155
Sapporo- <i>shi</i>	1,822	1,881	Sendai- <i>shi</i>	1,008	1,025
Kobe- <i>shi</i>	1,493	1,525	Kitakyushu- <i>shi</i>	1,011	994

1) 23 wards (*ku*) of Tokyo-*to*.

Source: Statistics Bureau, MIC.

11. Vital Statistics

Item	1970 1)	1980	1990	1995	2000	2005
Crude live-birth rate (per 1,000 population)	18.8	13.6	10.0	9.6	9.5	* 8.4
Crude death rate (per 1,000 population)	6.9	6.2	6.7	7.4	7.7	* 8.6
Infant mortality rate (per 1,000 live births)	13.1	7.5	4.6	4.3	3.2	* 2.8
Total fertility rate 2)	2.13	1.75	1.54	1.42	1.36	* 1.25
Mean age at first marriage: groom	26.9	27.8	28.4	28.5	28.8	* 29.8
bride	24.2	25.2	25.9	26.3	27.0	* 28.0
Crude marriage rate (per 1,000 population)	10.0	6.7	5.9	6.4	6.4	* 5.7
Crude divorce rate (per 1,000 population)	0.93	1.22	1.28	1.60	2.10	* 2.08
Life expectancy at birth: male (years)	69.31	73.35	75.92	76.38	77.72	78.53
female (years)	74.66	78.76	81.90	82.85	84.60	85.49

1) Excluding Okinawa Prefecture. 2) The average number of children that would be born alive to a hypothetical cohort of women if, throughout their reproductive years, the age-specific fertility rates for the specified year remained unchanged.

Source: Ministry of Health, Labour and Welfare.

Population and Households

12. Registered Foreigners in Japan

[In thousands. As of December 31]

End of year	Total	Korea 1)	China	Brazil	Philippines	Peru	U.S.A.
1990	1,075	688	150	56	49	10	38
1995	1,362	666	223	176	74	36	43
2000	1,686	635	336	254	145	46	45
2005	2,012	599	520	302	187	58	49
Percent change, 2004-2005	1.9	-1.4	6.6	5.4	-6.1	3.5	1.1

1) Republic of Korea and Democratic People's Republic of Korea.

Source: Ministry of Justice.

13. Japanese Living Abroad

[In thousands. As of October 1]

Year	Total	U.S.A.	China	Brazil	U.K.
1990	620	236	8	105	44
1995	728	264	17	91	52
2000	812	298	46	75	53
2005	1,013	352	115	66	55
Percent change, 2004-2005	5.3	3.6	15.9	-4.5	8.1

Source: Ministry of Foreign Affairs.

14. Persons Legally Entered or Departed from Japan

[In thousands]

Year	Japanese departed from Japan	Foreigners entered Japan
1990	10,997	3,504
1995	15,298	3,732
2000	17,819	5,272
2005	17,404	7,450
Percent change, 2004-2005	3.4	10.3

Source: Ministry of Justice.

15. Gross Domestic Expenditure

[In billions of chained (2000) yen]

Item	FY 1995	FY 2000	FY 2004	FY 2005 *	Percent change, FY 2004-2005
Private final consumption expenditure	272,721.2	283,404.5	297,793.0	304,625.8	2.3
Government final consumption expenditure	74,647.8	85,605.0	93,815.7	95,199.0	1.5
Gross fixed capital formation	131,816.2	127,600.8	121,230.7	126,487.8	4.3
Changes in inventories					
Private sectors	1,287.7	1,081.9	-877.6	25.7	...
Public sectors	334.4	238.0	280.1	288.6	...
Net exports of goods and services	822.1	6,299.7	13,783.0	16,504.1	...
Exports	42,557.1	55,376.2	69,622.4	75,983.3	9.1
(less) Imports	41,735.0	49,076.5	55,839.4	59,479.2	6.5
Gross domestic expenditure (= GDP)	480,963.3	504,332.5	526,385.4	543,133.7	3.2

Source: Cabinet Office.

Finance

16. Currency and Deposits

[In billions of yen]

Year	Bank of Japan notes issued (average)	Money stock		Banking accounts of domestically licensed banks (end of year)		Postal savings outstanding (end of year)
		M ₂ +CDs (average outstanding)	Broadly-defined liquidity (average outstanding)	Outstanding of deposits	Outstanding of loans and bills discounted	
2003	70,110	679,484	1,320,917	514,181	413,853	230,036
2004	71,502	692,057	1,362,615	520,618	404,001	219,370
2005	73,632	704,974	1,401,389	528,147	408,548	204,535
Percent change, 2004-2005	3.0	1.9	2.8	1.4	1.1	-6.8

Source: Bank of Japan; Japan Post.

17. Principal Interest Rates and Stock Prices

End of year	Call rates, uncollateralized overnight 1) (%)	Long-term prime lending rate 1) (%)	Newly issued government bonds yield 1) (10 years) (%)	TOPIX TSE 1st section stock price index 2) (annual average)	PER Price-earnings ratio 3) (TSE 1st section) (times)
2002	0.002	1.65	0.900	979.49	-
2003	0.001	1.70	1.360	918.86	614.1
2004	0.002	1.55	1.435	1,120.07	39.0
2005	0.004	1.85	1.470	1,270.09	45.8

1) Percent per annum. 2) January 4, 1968=100. 3) PER=Aggregate of stock prices / Aggregate of net earnings per share.

Source: Bank of Japan; Tokyo Stock Exchange.

18. Basic Discount Rates and Basic Loan Rates

[In percent. Formerly referred to as the Official Discount Rates]

Effective dates	Rates	Effective dates	Rates
Apr. 1, 1992	3.75	Jan. 4, 2001	0.50
July 27, 1992	3.25	Feb. 13, 2001	0.35
Feb. 4, 1993	2.50	Mar. 1, 2001	0.25
Sep. 21, 1993	1.75	Sep. 19, 2001	0.10
Apr. 14, 1995	1.00	July 14, 2006	0.40
Sep. 8, 1995	0.50		

Source: Bank of Japan.

Government Finance

19. Settlement of General Account

[In billions of yen]

Fiscal year	Revenue	Tax and stamp revenues	Receipts from liquidation of government properties	Government enterprises profits and receipts	Public bonds
1990	71,703	60,106	162	22	7,312
1995	80,557	51,931	274	22	21,247
2000	93,361	50,712	225	20	33,004
2006 1)	79,686	45,878	214	17	29,973
Percent change, FY 2005-2006	-3.0	4.3	-16.4	1.5	-12.8

Fiscal year	Expenditure	Social security	Education and science	National debt service	Local allocation tax grants	National defense
1990	69,269	11,481	5,410	14,314	15,931	4,253
1995	75,939	14,543	6,667	12,820	12,302	4,720
2000	89,321	17,636	6,872	21,446	14,915	4,907
2006 1)	79,686	20,574	5,267	18,762	13,742	4,814
Percent change, FY 2005-2006	-3.0	0.9	-8.0	1.7	-5.7	-0.9

1) Initial budget.

Source: Ministry of Finance.

20. Economic Conditions

Year	Manufacturing indices (2000=100)				Machinery orders, private demand (excl. electric power and shipping) (billion yen)	Electric power consumption of large users 1) (billion kWh)	Registration of new motor vehicles (1,000)
	Industrial production	Producers' shipments	Producers' inventory of finished goods	Operating ratio			
2002	92.0	93.5	94.1	93.5	9,987.5	281.26	3,966
2003	95.0	97.2	91.1	97.3	11,054.5	281.72	4,027
2004	100.2	102.4	90.0	102.0	11,544.2	288.58	3,962
2005	101.3	103.9	92.8	103.6	12,364.9	294.37	3,928
Percent change, 2004-2005	1.1	1.5	3.1	1.6	7.1	2.0	-0.9

Year	Construction orders, private sector (billion yen)	Construction starts public sector 1) (billion yen)	New dwelling construction starts (1,000 units)	Index of tertiary industry activity (2000=100)	Bankruptcy of enterprises	
					Number of cases	Liabilities, total (billion yen)
2002	8,097.9	15,469.9	1,151	101.0	6,551	10,939.4
2003	8,365.1	12,731.4	1,160	101.9	6,547	9,859.1
2004	9,200.8	12,012.7	1,189	104.3	6,029	6,520.9
2005	9,485.0	10,771.9	1,236	106.6	# 7,905	# 6,116.4
Percent change, 2004-2005	3.1	-10.2	4.0	2.2	31.1	-6.2

1) Fiscal year.

Source: Cabinet Office; Ministry of Economy, Trade and Industry; Agency for Natural Resources and Energy; Ministry of Land, Infrastructure and Transport; Japan Automobile Dealers Association; Teikoku Databank, Ltd.

Business Activities

21. Number of Privately Owned Establishments, by Type of Legal Organization and Industry

[In thousands. Excludes individual proprietorships in agriculture, forestry, and fisheries; housekeeping services; and foreign governments and international agencies in Japan]

Form or Industry	1999	2004	Percent change, 1999- 2004
Total	6,203	5,728	-7.7
Individual proprietorships	3,243	2,859	-11.8
Corporations	2,925	2,837	-3.0
Unincorporated organizations	36	32	-9.5
Agriculture, forestry and fisheries	19	19	-1.1
Mining	4	3	-21.0
Construction	612	564	-7.8
Manufacturing	681	576	-15.4
Electricity, gas, heat supply and water	4	3	-14.9
Information and communications	47	54	16.5
Transport	142	130	-8.2
Wholesale and retail trade	1,862	1,626	-12.6
Finance and insurance	99	86	-13.6
Real estate	323	316	-2.1
Eating and drinking places, accommodations	884	803	-9.2
Medical, health care and welfare	241	275	14.3
Education, learning support	162	164	1.5
Compound services	33	31	-8.0
Services, n. e. c.	1,091	1,077	-1.3

Source: Statistics Bureau, MIC.

22. Sales and Operating Profits-Sales Ratios of Corporations

Industry	FY 2000	FY 2005	Percent change, FY 2004-2005
Sales (trillion yen)			
Manufacturing	421	435	6.2
Wholesale and retail trade	554	537	0.5
Services	1) 184	206	34.7
Operating profits-sales ratios (%)			
Manufacturing	3.8	4.5	2) 0.0
Wholesale and retail trade	1.0	1.4	2) 0.2
Services	1) 2.8	2.8	2) -0.3

1) Including "Information and communications" and "Accommodations." 2) Change, FY 2004-2005.

Source: Ministry of Finance.

23. Sales per Individual Proprietorship

[In 10 thousands of yen]

Industry	FY 2000	FY 2005	Percent change, FY 2004-2005
Manufacturing	1,087	1,058	-16.3
Wholesale and retail trade	1,913	1,948	-0.4
Eating and drinking places, accommodations	1,134	912	-7.1
Services	718	578	-8.4

Source: Statistics Bureau, MIC.

24. Production Indices

[2000=100]

Year	Total	Agriculture				Forestry	Fisheries
		Rice	Vegetables	Livestock products			
Weights	10,000	7,898				495	1,607
		10,000	2,586	2,500	2,668		
1990	114.9	111.1	110.9	113.6	107.2	136.0	125.2
1995	107.8	106.0	113.5	104.4	103.4	117.9	112.6
2000	100.0	100.0	100.0	100.0	100.0	100.0	100.0
2004	93.5	94.0	92.2	91.1	97.9	92.8	91.5
Percent change, 2003-2004	0.6	1.7	12.2	-2.9	0.4	1.6	-4.8

Source: Ministry of Agriculture, Forestry and Fisheries.

25. Farm Households and Farm Household Population

[In thousands. As of February 1. Excluding non-commercial farm households]

Year	Farm households					Farm household population
	Total	Engaged exclusively in farming	With other job			
			Total	Mainly farming	Mainly other job	
1990	2,971	473	2,497	521	1,977	13,878
1995	2,651	428	2,224	498	1,725	12,037
2000	2,337	426	1,911	350	1,561	10,467
2005	1,963	443	1,520	308	1,212	8,370
Percent change, 2004-2005 1)	-9.2	0.5	-11.6	9.4	-15.8	-11.0

1) The 2004 figures: as of January 1.

Source: Ministry of Agriculture, Forestry and Fisheries.

Agriculture, Forestry, and Fisheries

26. Supply and Demand of Food

[In thousand tons]

Item	FY 2004 *			Self-sufficiency rates 1) (volume basis) (%)			
	Domestic production	Imports	Exports	FY 1990	FY 1995	FY 2000	FY 2004 *
Cereals	9,813	26,431	193	2) 67	2) 65	2) 60	2) 60
Rice	8,730	726	193	100	104	95	95
Wheat	860	5,484	0	15	7	11	14
Potatoes	3,893	813	2	93	87	83	83
Starch	2,828	159	0	13	12	9	10
Pulses	303	4,754	0	8	5	7	6
Vegetables	12,286	3,051	4	91	85	82	80
Fruits	3,457	5,353	44	63	49	44	39
Meat	3,020	2,532	1	70	57	52	55
Eggs	2,462	134	1	98	96	95	95
Cow milk and dairy products	8,290	3,995	9	78	72	68	67
Fish and shellfish	5,135	6,055	627	3) 72	3) 59	3) 53	3) 55
Sea weeds	120	68	3	72	68	63	65
Sugar	4) 2,148	4) 351	4) 2	32	31	29	34
Fats and oils	2,118	885	35	28	15	14	13
Total food supply (calorie basis)	-	-	-	48	43	40	40

1) Self-sufficiency rates as a percentage of consumption. 2) Staple food cereals. 3) Excluding feed. 4) Refined.

Source: Ministry of Agriculture, Forestry and Fisheries.

27. Production of Selected Industrial Products

[In thousands of units, except as indicated]

Item	2002	2003	2004	2005	Percent change, 2004-2005
Iron and steel products					
Crude steel (1,000 t)	107,745	110,511	112,718	112,741	-0.2
General machinery					
Playback robots (units)	32,862	40,785	48,366	61,078	26.3
Automatic vending machines	388	420	479	511	6.7
Electrical machinery					
Air conditioners	21,879	21,126	22,208	23,581	6.2
Microwave ovens	2,121	1,717	1,248	760	-39.1
Facsimiles	1,429	1,103	402	339	-15.6
Cell phones	46,072	59,460	49,488	47,087	-4.9
TV receivers					
Plasma	817	-
Liquid crystal	1,650	1,833	2,665	4,345	1) 77.6
Video cameras 2)	10,015	11,877	11,957	13,076	9.4
Car navigation systems	3,027	3,811	4,707	5,365	14.0
Magnetic tapes (100,000 m ²)	7,702	8,271	7,294	6,868	-5.8

Manufacturing

27. Production of Selected Industrial Products (Cont.)

[In thousands of units, except as indicated]

Item	2002	2003	2004	2005	Percent change, 2004-2005
Semiconductor integrated circuits (100,000)	251,481	268,804	300,898	298,180	-0.9
Personal computers	9,448	8,787	# 3) 9,059	3) 8,982	-0.9
Transport equipment					
Passenger cars 4)	8,618	8,478	8,720	9,017	3.4
Precision instruments					
Watches	7,432	6,499	5,024	4,872	-3.0
Ceramic, stone and clay products					
Cement (1,000 t)	71,828	68,766	67,376	69,629	3.3
Chemical products					
Ethylene (1,000 t)	7,152	7,367	7,570	7,618	0.6
Rubber products					
Tires for automobiles	177,491	179,343	182,109	185,385	1.8
Pulp, paper and paperboard products					
Paper (1,000 t)	18,528	18,396	18,788	18,901	0.6
Paperboards (1,000 t)	12,158	12,061	12,103	12,051	-0.4

1) Calculated by using link coefficients. 2) Excluding those for broadcasting. 3) Including work stations. 4) Including chassis only.

Source: Ministry of Economy, Trade and Industry.

28. Primary Energy Supply

[In petajoule]

Fiscal year	Total	Petroleum 1)	Coal 2)	Natural gas 3)	Nuclear	Hydro	Geothermal	New energy supply 4)
1990	20,183	11,518	3,361	2,059	1,887	833	16	508
1995	22,685	12,430	3,750	2,479	2,700	761	29	535
2000	23,621	12,008	4,285	3,061	2,873	778	30	586
2004	23,674	11,387	5,058	3,292	2,488	829	30	591

1) Crude oil, natural gas liquefied and petroleum products. 2) Including coal products. 3) Including LNG.

4) Total of solar power generation, waste generation, etc.

Source: Agency for Natural Resources and Energy.

29. Per Capita Consumption and Dependency on Imports of Primary Energy, by Country: 2002

Item	Japan	China	Germany	Russia	U.K.	U.S.A.
Per capita consumption (kg) 1)	3,725	687	3,888	4,142	3,767	7,717
Dependency on imports (%) 2)	81.4	3.0	62.4	-66.4	-9.4	26.8

1) Petroleum equivalent. 2) Dependency on imports=(Imports-Exports)/(Imports-Exports+Domestic production) x 100

Source: United Nations.

Energy

30. Volume of Imports, by Principal Import Partners

[In 1,000 kl]

Year	Total imports					
	Saudi Arabia	U.A.E.	Iran	Qatar	Kuwait	
1990	228,760	40,609	47,784	22,448	13,278	7,492
1995	266,921	51,997	71,900	22,887	17,095	12,886
2000	250,578	53,103	63,072	28,716	23,458	17,177
2005	245,186	71,217	60,011	33,730	23,562	18,431
Percent change, 2004-2005	0.7	19.2	-2.6	-7.7	4.3	4.1

Source: Ministry of Economy, Trade and Industry.

31. Oil Reserve and Days Equivalence

End of fiscal year	Oil reserve (10,000 kl)	Days equivalence 1)		
		Public	Private	
1990	8,278	142	54	88
1995	8,953	150	76	74
2000	9,080	163	85	78
2005	9,043	168	90	78
Change, 2004-2005	300	2	-2	4

1) Derived by dividing oil reserve by average daily oil consumption.

Source: Ministry of Economy, Trade and Industry.

32. Electric Power Consumption

[In million kWh]

Fiscal year	Total	Electric utilities		Self- consumption by industrial plants
		Electric light	Electric power	
1990	765,602	177,419	500,712	87,471
1995	881,559	224,650	551,861	105,048
2000	982,066	254,592	603,485	123,988
2004	1,023,149	272,552	619,551	131,046
Percent change, 2003-2004	3.9	5.0	3.5	3.6

Source: Agency for Natural Resources and Energy.

33. Telecommunications Services

End of fiscal year	Postal Services 1) 2)		Fixed phone service subscribers (10,000)	ISDN subscribers (10,000)	Cell phone subscribers (10,000)	PHS subscribers (10,000) 3)	International telephone calls (million) 1) 4)
	Letters (million)	Parcels (million)					
1995	24,263	400	6,111	53	1,020	151	683
2000	26,114	310	5,226	970	6,094	584	818
2004	23,493	1,430	5,163	798	8,700	448	# 1,104
2005	22,666	2,075	5,058	750	9,179	469	...
Percent change, 2004-2005	-3.5	45.1	-2.0	-6.1	5.5	4.8	...

1) Totals of fiscal year period. 2) Domestic mail (letters and parcels). 3) Personal handyphone system. 4) Sent and received.

Source: Ministry of Internal Affairs and Communications; Japan Post.

Science and Technology/Information and Communication

34. Internet Subscribers in Japan

[In 10 thousands]

End of fiscal year	Broadband subscribers 1)				Mobile phone Internet 2)	Internet users 3)
	Cable Internet	DSL (Digital Subscriber Line)	FTTH (Fiber To The Home)			
2000	-	-	-	-	-	4,708
2003	-	-	-	-	-	7,730
2004	1,956	296	1,368	290	7,655	7,948
2005	2,330	331	1,452	546	8,178	8,529
Percent change, 2004-2005	19.1	11.8	6.2	88.4	6.8	7.3

1) Including Fixed Wireless Access. 2) Subscribers of cell phones and PHS (personal handyphone systems). 3) End of year. People used Internet-connecting devices, such as PCs, cell phones, PHS, mobile information terminals and game machines. Subscribers aged 15-79 years for 2000, and 6 years and over for 2001 and after.

Source: Ministry of Internal Affairs and Communications.

35. Purchases of Goods and Services through Internet

[In percent]

Year	by PCs			by cell phones		
	Total	Male	Female	Total	Male	Female
2003 1)	36.8	38.6	34.4	7.4	7.2	7.6
2004 2)	38.0	39.8	35.8	7.3	7.2	7.4
2005 2)	39.7	41.5	37.5	8.6	8.6	8.6

1) Respondents aged 15 years and over. 2) Respondents aged 6 years and over.

Source: Ministry of Internal Affairs and Communications.

36. Ratio of Enterprises Using Electronic

Commerce: 2001 [In percent]

Industry	Total	With other enterprises 1)	With consumers 1)
Average of all industries	10.5	5.6	3.5
Manufacturing	11.8	7.2	2.7
Wholesale and retail trade, eating and drinking places	12.8	5.5	4.6
Finance and insurance	13.7	5.7	6.5
Real estate	7.3	3.5	4.3
Services	11.9	7.5	4.3

1) By means of the Internet.

Source: Statistics Bureau, MIC.

37. Research and Development Expenditures

[In billions of yen]

Item	FY 1990	FY 1995	FY 2000	FY 2004	Percent change, FY 2003-2004
Sector	13,078.3	14,408.2	# 16,289.3	# 16,937.6	0.8
Business enterprises	9,267.2	9,395.9	# 10,860.2	# 11,867.3	0.9
Non-profit institutions and public organizations	1,514.2	2,030.2	2,220.7	# 1,796.3	0.8
Universities and colleges	2,297.0	2,982.2	3,208.4	3,274.0	0.3
Source of funds	13,078.3	14,408.2	# 16,289.3	# 16,937.6	0.8
National and local governments	2,346.6	3,292.4	3,540.8	# 3,388.8	-0.2
Private sector	10,721.5	11,100.5	# 12,684.2	# 13,497.8	1.0
Foreign countries	10.3	15.4	64.4	51.0	9.6

Source: Statistics Bureau, MIC.

Science and Technology/Information and Communication

38. Persons Engaged in Research and Development

[As of March 31, 2005]

Sector	Number of business enterprises, etc. 1)	Number of persons employed in R&D				
		Total	Researchers	Assistant research workers	Technicians	Clerical and other supporting personnel
Total	28,608	1,009,937	790,932	73,106	67,582	78,317
Business enterprises	24,290	587,414	455,868	52,050	48,480	31,016
Non-profit institutions	488	15,480	10,023	1,522	1,156	2,779
Public organizations	601	61,769	33,894	7,616	5,725	14,534
Universities and colleges	3,229	345,274	291,147	11,918	12,221	29,988

1) Number of business enterprises, non-profit institutions and public organizations performing intramural and/or extramural R&D, and universities and colleges.

Source: Statistics Bureau, MIC.

39. Transportation

Item	FY 1990	FY 1995	FY 2000	FY 2005	Percent change, FY 2004-2005
Index of transport (2000=100)	89.2	95.2	100.3	* 107.8	2.4
Domestic	90.5	95.8	100.3	* 108.3	2.5
International	61.8	81.8	100.1	94.7	-0.5
Volume of freight transport (million ton-km)					
Railways	27,196	25,101	22,136
Motor vehicles	274,244	294,648	313,118
Domestic cargo ships (business purpose)	239,739	235,204	239,224	211,265	-3.3
Airlines					
Domestic scheduled services	635	762	906	877	0.9
International services	4,386	5,629	7,228	7,729	1.5
Volume of passenger transport (million passenger-km)					
Railways	387,478	400,056	384,441
Motor vehicles	853,060	917,419	951,251
Airlines					
Domestic scheduled services	51,623	65,012	79,698	83,220	1.8
International services	47,310	72,296	97,873	82,328	-2.8

Source: Ministry of Land, Infrastructure and Transport.

Domestic Trade and Services

40. Wholesale and Retail Trade

Year	Wholesale	Retail
Number of establishments		
1997	391,574	1,419,696
1999	425,850	1,406,884
2002 1)	379,549	1,300,057
2004	375,269	1,238,049
Percent change, 2002-2004	-1.1	-4.8
Sales (billion yen)		
1997	479,813	147,743
1999	495,453	143,833
2002 1)	413,355	135,109
2004	405,497	133,279
Percent change, 2002-2004	-1.9	-1.4

1) Excluding Miyake-*mura* of Tokyo-*to*.

Source: Ministry of Economy, Trade and Industry.

41. Large Retail Stores and Convenience Stores

Year	Department stores	Super markets	Convenience stores
Number of establishments			
1994	428	2,292	-
1997	432	2,753	31,079
2000	417	3,375	35,461
2004	358	3,932	38,621
2005	345	3,940	39,600
Percent change, 2004-2005	-3.6	0.2	2.5
Sales (billion yen)			
1994	11,025	10,768	-
1997	11,109	12,304	-
2000	10,011	12,622	6,680
2004	8,854	12,614	7,289
2005	8,763	12,565	7,360
Percent change, 2004-2005 1)	-0.5	-3.6	-2.3

1) Change of sales at the establishments existed in 2004.

Source: Ministry of Economy, Trade and Industry.

42. Service Industries-Number of Establishments: 2004

Kind of business	Establishments (1,000)	Percent change, 1999-2004
Services, total	2,126	-
Eating places	235	-
Hair-dressing and beauty salon	173	-
House and room lessors	150	-
Barbershops	120	-4.5
Instruction services for arts, culture and technical skills	90	-
Coffee shops	84	-
Laundries	82	-11.8
Automobile maintenance services	73	7.5
Health practitioners other than medical institutions	66	11.2
Buddhist temples and offices	62	-2.6
Engineering and architectural services	54	-2.6
Hotels	52	-13.7
Supplementary tutorial schools	49	-
Real estate lessors (except house and room lessors)	42	-
Miscellaneous professional services	42	-

Source: Statistics Bureau, MIC.

43. Service Industries-Annual Receipts: 2004

Kind of business	Receipts (billion yen)	Percent change, 1999-2004
Services, total 1)	151,815.9	-
Amusement and recreation facilities	28,526.2	-3.1
Eating places	9,832.7	-
Advertising agencies	8,300.6	-5.7
Business services, n. e. c.	8,196.1	-
Real estate lessors (except house and room lessors)	7,048.9	-
Hotels	6,632.9	-26.0
General goods rental and leasing	6,053.7	-33.7
Engineering and architectural services	4,599.8	-31.3
Building maintenance services	4,596.9	-4.5
Miscellaneous professional services	3,899.6	-
Automobile maintenance services	3,480.9	-11.7
Travel agency	3,447.4	-
Real estate managers	3,421.1	-
Industrial equipment and machinery rental	3,367.9	39.2
Machine repair shops (except electrical machinery, apparatus, appliances and supplies)	2,567.1	-

1) "Individual proprietorships" and "companies" only.

Source: Statistics Bureau, MIC.

Foreign Trade, Balance of Payments, and International Cooperation

44. Value of Exports, by Country/Region

[In billions of yen]

Year	Total	China	Germany 1)	Hong Kong SAR	Korea, Rep. of	Singapore	Taiwan	U.K.	U.S.A.
1990	41,457	884	2,566	1,888	2,518	1,547	2,234	1,563	13,057
1995	41,531	2,062	# 1,908	2,600	2,928	2,158	2,710	1,323	11,333
2000	51,654	3,274	2,155	2,930	3,309	2,244	3,874	1,598	15,356
2005	65,657	8,837	2,058	3,969	5,146	2,035	4,809	1,663	14,805
Percent change, 2004-2005	7.3	10.5	0.4	3.6	7.5	4.6	5.9	2.7	7.8

1) Prior to November 1990, former Federal Republic of Germany.

Source: Ministry of Finance.

45. Value of Imports, by Country/Region

[In billions of yen]

Year	Total	Australia	China	Indonesia	Korea, Rep. of	Malaysia	Taiwan	U.A.E.	U.S.A.
1990	33,855	1,787	1,730	1,821	1,690	780	1,232	1,287	7,586
1995	31,549	1,367	3,381	1,335	1,622	992	1,347	958	7,076
2000	40,938	1,596	5,941	1,766	2,205	1,563	1,930	1,600	7,779
2005	56,949	2,706	11,975	2,298	2,695	1,619	1,994	2,795	7,074
Percent change, 2004-2005	15.7	28.7	17.4	13.7	13.1	6.1	10.5	41.0	4.6

Source: Ministry of Finance.

46. Value of Exports, by Principal Commodities

[In billions of yen]

Item	2002	2003	2004	2005	Percent change, 2004-2005
Total	52,109	54,548	61,170	65,657	7.3
Foodstuffs	269	267	283	319	12.7
Raw materials	451	498	633	742	17.3
Chemicals	4,174	4,525	5,221	5,848	12.0
Organic chemicals	1,331	1,472	1,696	1,883	11.0
Plastics	1,156	1,250	1,478	1,716	16.1
Metals, non-metals, textiles, etc.	5,474	5,688	6,537	7,397	13.2
Iron and steel	1,940	2,066	2,519	3,037	20.5
General machinery	10,599	11,025	12,607	13,352	5.9
Power generating machinery	1,748	1,730	1,920	2,186	13.9
Electrical machinery	11,924	12,857	14,373	14,549	1.2
Semiconductors and other electronic parts	3,867	4,074	4,395	4,402	0.1
Transport equipment	13,000	13,261	14,107	15,197	7.7
Motor vehicles	8,775	8,895	9,214	9,929	7.8
Other	6,046	6,258	7,176	7,779	8.4
Scientific and optical instruments	1,897	2,038	2,499	2,478	-0.8

Source: Ministry of Finance.

Foreign Trade, Balance of Payments, and International Cooperation

47. Value of Imports, by Principal Commodities

[In billions of yen]

Item	2002	2003	2004	2005	Percent change, 2004-2005
Total	42,228	44,362	49,217	56,949	15.7
Foodstuffs	5,282	5,105	5,302	5,559	4.8
Fish and shellfish	1,658	1,475	1,539	1,562	1.5
Raw materials	2,522	2,659	3,079	3,505	13.8
Mineral fuels	8,174	9,350	10,671	14,560	36.4
Petroleum, crude and partly refined	4,573	5,328	6,065	8,823	45.5
Chemicals	3,239	3,458	3,816	4,321	13.2
Metals, non-metals, textiles, etc.	3,797	4,063	4,863	5,417	11.4
Non-ferrous metals	912	1,003	1,325	1,462	10.3
General machinery	4,583	4,702	5,171	5,661	9.5
Computers and units	1,793	1,843	1,905	2,066	8.5
Electrical machinery	5,802	6,070	6,851	7,402	8.0
Semiconductors and other electronic parts	1,910	2,015	2,280	2,348	3.0
Transport equipment	1,773	1,868	1,926	2,063	7.1
Other	7,055	7,089	7,539	8,463	12.3
Clothing and clothing accessories	2,189	2,241	2,330	2,469	6.0

Source: Ministry of Finance.

48. Foreign Trade Indices

[2000=100]

Year	Exports			Imports			Terms of trade index C/F×100
	Value index (A)	Quantum index (B)	Unit value index (C)=A/B×100	Value index (D)	Quantum index (E)	Unit value index (F)=D/E×100	
2002	100.9	97.7	103.2	103.1	100.0	103.2	100.1
2003	105.6	102.5	103.0	108.4	107.1	101.2	101.8
2004	118.4	113.4	104.4	120.2	114.6	104.9	99.5
2005	127.1	114.4	111.1	139.1	117.9	118.0	94.2

Source: Ministry of Finance.

49. Foreign Exchange Rates

[Yen equivalent to respective country's currency unit]

End of year	Inter-bank rates (Tokyo) 1)	Arbitrage rates					
	U.S. dollar	Euro	Pound sterling	Canadian dollar	Ren min bi yuan 2)	Korean won 3)	Australian dollar
1990	135.40	-	259.86	115.89	25.82	18.76	103.82
1995	102.91	-	159.54	75.37	12.39	13.30	76.38
2000	114.90	107.87	171.83	76.63	13.91	9.09	63.88
2005	117.48	139.70	202.77	101.21	14.61	11.71	86.61

1) Spot rate; central rates based on offer and bid rates. 2) Settlement rate by People's Bank of China.

3) Yen per 100 won. Official rate by the Korea Exchange Bank.

Source: Bank of Japan.

Foreign Trade, Balance of Payments, and International Cooperation

50. Balance of Payments and Reserve Assets

[In billions of yen]

Item	2002	2003	2004	2005	Change, 2004-2005
Balance of payments					
Current account	14,139.7	15,766.8	18,618.4	18,259.1	-359.3
Goods and services	6,469.0	8,355.3	10,196.1	7,693.0	-2,503.1
Trade balance	11,550.3	11,976.8	13,902.2	10,334.8	-3,567.4
Exports	49,479.7	51,934.2	58,295.1	62,631.9	4,336.8
Imports	37,929.4	39,957.5	44,392.8	52,297.1	7,904.3
Services	-5,081.3	-3,621.5	-3,706.1	-2,641.8	1,064.3
Income	8,266.5	8,281.2	9,273.1	11,381.7	2,108.6
Current transfers	-595.8	-869.7	-850.9	-815.7	35.2
Capital and financial account 1)	-8,477.5	7,734.1	1,737.0	-14,006.8	-15,743.8
Financial account 1)	-8,055.8	8,201.4	2,250.4	-13,457.9	-15,708.3
Changes in reserve assets 1)	-5,796.9	-21,528.8	-17,267.5	-2,456.2	14,811.3
Errors and omissions	134.8	-1,972.2	-3,087.9	-1,796.0	1,291.9
Reserve assets (million U.S. \$) 2)	469,728	673,529	844,543	846,897	2,354

1) Negative figures (-) show outflow of capital (an increase in assets or a decrease in liabilities). 2) As of end of year.

Source: Ministry of Finance; Bank of Japan.

51. Value of Direct Investment Abroad: 2005

[In billions of yen]

Industry	[In billions of yen]				
	World	Asia	North America	Central & South America	Western Europe
Total	-5,045.9	-1,798.0	-1,478.8	-703.2	-824.5
Manufacturing	-2,886.6	-1,217.0	-964.2	-140.0	-401.1
Food	-187.3	-104.2	-35.6	-20.6	-9.1
Lumber/pulp	-95.3	-72.4	-5.2	-1.3	-2.5
Chemicals/pharmaceuticals	-375.5	-150.4	-107.3	-5.6	-69.0
Petroleum	-55.2	38.4	-11.7	3.0	-64.2
Rubber/leather	-92.5	-41.2	-39.1	...	-8.3
Iron/non-ferrous/metals	-148.0	-85.5	-29.9	3.9	-30.0
General machinery	-145.4	-89.3	-28.9	-7.0	-20.0
Electric machinery	-480.9	-200.7	-129.8	0.2	-143.3
Transportation equipment	-946.1	-235.0	-529.9	-81.1	-22.4
Precision machinery	-155.2	-94.8	-27.2	-1.0	-32.1
Non-manufacturing	-2,159.3	-581.0	-514.5	-563.3	-423.4
Mining	-150.7	0.8	-3.3	-36.4	-56.5
Transportation	-91.6	0.3	-0.1	-83.3	2.9
Communications	-195.4	-134.7	-55.9	24.7	-57.0
Wholesale/retail	-534.0	-78.0	-364.5	17.5	-64.2
Finance/insurance	-1,014.5	-282.1	-34.7	-479.2	-146.4
Real estate	93.8	-11.0	53.6	0.9	33.6
Services	-119.4	-55.1	-82.5	12.4	-28.3

Source: Ministry of Finance.

52. ODA as Percentage of GNI (2005 provisional)

Country	% of GNI
Norway	0.93
Sweden	0.92
Luxembourg	0.87
Netherlands	0.82
Denmark	0.81
Belgium	0.53
Austria	0.52
U.K.	0.48
Finland	0.47
France	0.47
Switzerland	0.44
Ireland	0.41
Germany	0.35
Canada	0.34
Italy	0.29
Spain	0.29
Japan	0.28
New Zealand	0.27
Australia	0.25
Greece	0.24
U.S.A.	0.22
Portugal	0.21

Source: Ministry of Foreign Affairs.

Foreign Trade, Balance of Payments, and International Cooperation

53. Net Flow of Development Cooperation: 2004

[In millions of U.S. dollars]

Net disbursements	Japan	Canada	France	Germany	U.K.	U.S.A.
Total resource flows	11,351	5,986	12,599	11,830	26,922	32,283
Official development assistance (ODA)	8,906	2,599	8,473	7,534	7,883	19,705
Bilateral official development assistance	5,917	1,991	5,567	3,823	5,339	16,250
Contributions to multilateral institutions, etc.	2,988	608	2,906	3,712	2,544	3,455
Other official flows (OOF)	-2,372	-794	-216	-1,051	-155	-679
Private flows at market terms (PF)	4,392	3,542	4,342	4,199	18,805	6,465
Private export credits (over one year)	1,667	0	-23	949	-356	-293
Direct investment	9,171	3,613	1,534	3,613	13,335	20,355
Bilateral portfolio investment	-3,426	-71	2,831	-278	5,826	-12,343
Contributions to multilateral institutions	-3,020	-	-	-85	-	-1,255
Grants by private voluntary agencies	425	639	-	1,148	390	6,792
Total resource flows as percent of GNI	0.24	0.62	0.61	0.43	1.24	0.28

Source: OECD.

54. Selected Employment Indicators

Year	Unemployment rate (%)	Active job openings-to-applicants ratio (times)	Employment index of regular employees (all industries) 1)2)		Index of real wages (manufacturing) 1)2)	Non-scheduled monthly hours worked (manufacturing) 1)	Index of labor productivity (manufacturing) 2)3)
				Manufacturing			
1990	2.1	1.40	94.8	113.4	92.4	19.7	84.6
1995	3.2	0.63	100.6	111.4	95.9	13.3	88.8
2000	4.7	0.59	100.0	100.0	100.0	15.4	100.0
2005	4.4	0.95	97.2	88.5	106.7	17.7	111.2
Percent change, 2004-2005	4) -0.3	5) 0.12	0.5	0.1	1.2	-0.4	0.9

1) Establishments with 30 or more regular employees. 2) 2000=100. 3) Establishments with 5 or more regular employees.

4) Change in percentage point, 2004-2005. 5) Change, 2004-2005.

Source: Statistics Bureau, MIC; Ministry of Health, Labour and Welfare; Japan Productivity Center for Socio-Economic Development.

55. Unemployment Rates

[In percent]

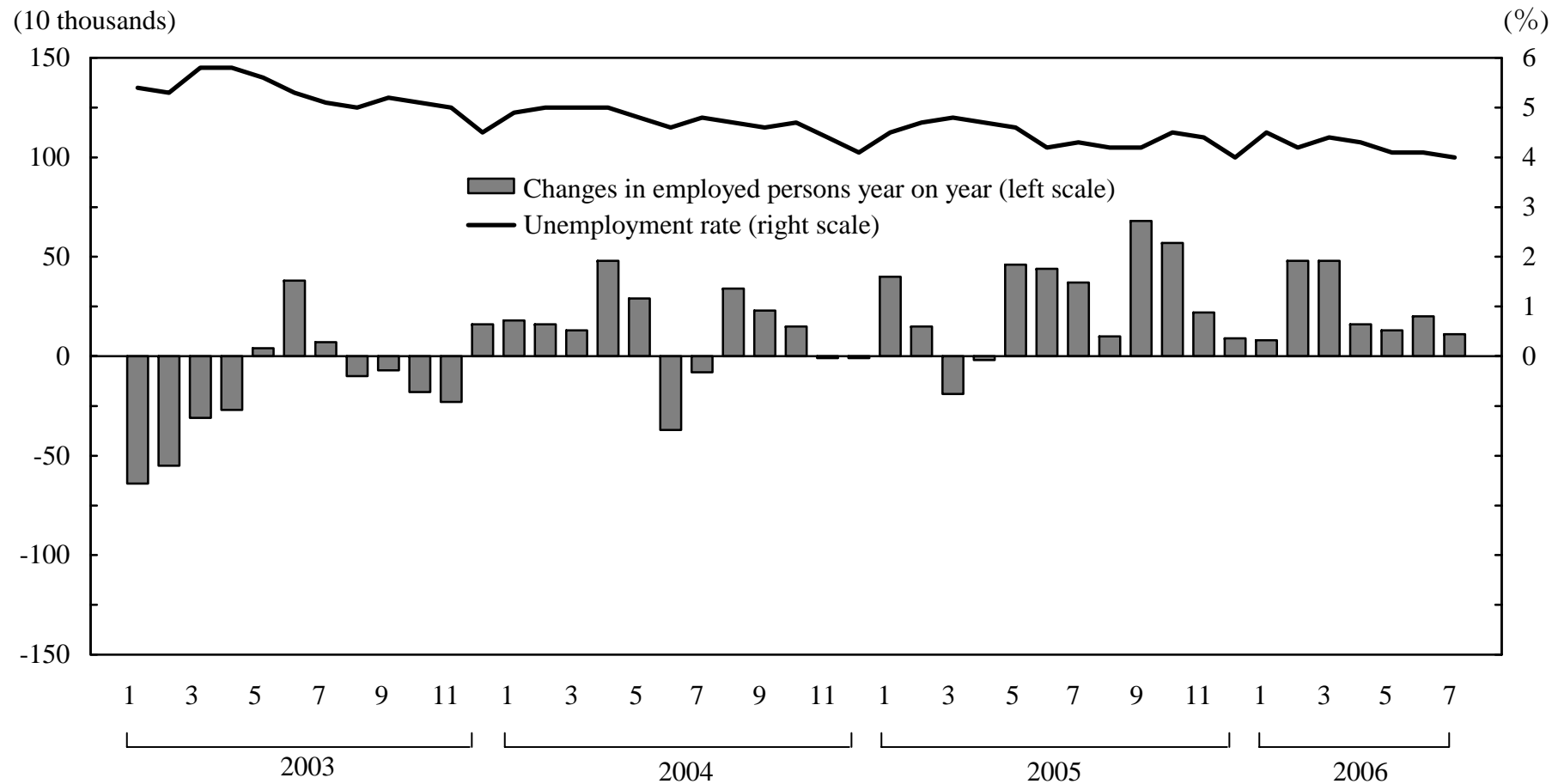
Year	Japan	Canada	France	Germany 1)	Italy	Korea, Rep. of 1)	U.K.	U.S.A.
1990	2.1	8.1	8.9	4.8	8.9	2.4	5.5	5.6
1995	3.2	9.5	11.1	8.0	11.5	2.1	7.6	# 5.6
2000	4.7	6.8	9.5	9.7	10.1	4.4	3.6	4.0
2005	4.4	6.8	9.9	11.7	7.7	3.7	2.7	5.1

1) Non-seasonal adjusted figures.

Source: Statistics Bureau, MIC; Cabinet Office.

Labor and Wages

Changes in Employed Persons and Unemployment Rate



Source: Statistics Bureau, MIC.

56. Labor Force Status

[In 10 thousands]

Year	Population 15 years and over	Labor force	Employed persons	Unemployed persons				Not in labor force
				Total	Quitted job by involuntary reason	Quitted job by voluntary reason	Other	
1990	10,089	6,384	6,249	134	33	52	42	3,657
1995	10,510	6,666	6,457	210	55	83	61	3,836
2000	10,836	6,766	6,446	320	102	109	98	4,057
2005	11,007	6,650	6,356	294	100	110	81	4,346
Percent change, 2004-2005	0.2	0.1	0.4	-6.1	-15.3	3.8	-5.8	0.2

Source: Statistics Bureau, MIC.

57. Employed Persons, by Employment Status

[In 10 thousands]

Year	Total employed persons	Self- employed workers	Family workers	Employees			
				Total	Regular employees	Temporary employees	Daily employees
1990	6,249	878	517	4,835	4,316	393	126
1995	6,457	784	397	5,263	4,709	433	120
2000	6,446	731	340	5,356	4,684	552	119
2005	6,356	650	282	5,393	4,631	650	112
Percent change, 2004-2005	0.4	-0.9	-2.8	0.7	0.5	3.0	-2.6

Source: Statistics Bureau, MIC.

Labor and Wages

58. Employed Persons, by Industry

Industry	Employed persons (10,000) 1)				Percent change, 2004-2005	Percent distribution 2005
	1990	1995	2000	2005		
Total 2)	6,249	6,457	6,446	6,356	0.4	100.0
Agriculture and forestry	411	340	297	259	-1.9	4.1
Fisheries	40	27	29	23	4.5	0.4
Mining	6	6	5	3	3) ...	0.0
Construction	588	663	653	568	-2.7	8.9
Manufacturing	-	-	-	1,142	-0.7	18.0
Electricity, gas, heat supply and water	30	42	34	35	12.9	0.6
Information and communications	-	-	-	176	2.3	2.8
Transport	-	-	-	317	-1.9	5.0
Wholesale and retail trade	-	-	1,181	1,122	-0.1	17.7
Finance and insurance	-	-	-	157	-1.3	2.5
Real estate	-	-	-	75	5.6	1.2
Eating and drinking places, accommodations	-	-	-	343	-1.2	5.4
Medical, health care and welfare	-	-	-	553	4.1	8.7
Education and learning support	-	-	-	286	0.7	4.5
Compound services	-	-	-	76	-6.2	1.2
Services (not elsewhere classified)	-	-	-	916	4.0	14.4
Government (not elsewhere classified)	195	218	214	229	-1.7	3.6

1) The Japan Standard Industrial Classification (JSIC) was revised in 2002. Figures for 2004 and 2005 are based on the JSIC 2002 revision. 2) Including the employed not classifiable or not reported. 3) Not computed when employed persons are under 100,000.

Source: Statistics Bureau, MIC.

59. Employed Persons, by Occupation

Occupation	Employed persons (10,000)				Percent change, 2004-2005	Percent distribution 2005
	1990	1995	2000	2005		
Total 1)	6,249	6,457	6,446	6,356	0.4	100.0
Professional and technical workers	690	790	856	937	1.8	14.7
Administrative and managerial workers	239	236	206	189	0.0	3.0
Clerical and related workers	1,157	1,252	1,285	1,247	0.2	19.6
Sales workers	940	945	911	892	-1.0	14.0
Protective service and other service workers	535	610	677	757	1.2	11.9
Agricultural, forestry and fishery workers	448	363	321	279	-1.8	4.4
Transport and communication workers	233	237	221	204	1.5	3.2
Mining workers	3	3	3	3	2) ...	0.0
Craftsmen and manufacturing and construction workers	1,702	1,687	1,580	1,416	0.1	22.3
Laborers	274	310	347	363	0.8	5.7

1) Including the employed not classifiable or not reported. 2) Not computed when employed persons are under 100,000.

Source: Statistics Bureau, MIC.

Labor and Wages

60. Wages - Average Monthly Cash Earnings of Regular Employees, by Industry

[In thousand yen. Establishments with 30 or more regular employees]

Year	All industries	Construction	Manufacturing	Information and communications	Transport	Wholesale and retail trade	Finance and insurance	Services, n.e.c. 1)
1990	370	402	352	-	-	-	-	-
1995	409	451	391	-	-	-	-	-
2000	398	456	407	537	394	333	546	347
2005	380	440	420	511	368	297	555	319
Percent change, 2004-2005	1.0	1.1	0.8	0.3	1.1	4.0	1.7	0.5

1) Excluding housekeeping services and foreign governments and international agencies in Japan.

Source: Ministry of Health, Labour and Welfare.

61. Working Hours - Average Monthly Hours Worked by Regular Employees, by Industry

[In hours. Establishments with 30 or more regular employees]

Year	All industries	Construction	Manufacturing	Information and communications	Wholesale and retail trade	Services, n.e.c. 1)	Scheduled hours worked	Non-scheduled hours worked
1990	171.0	184.4	176.6	-	-	-	155.5	15.5
1995	159.1	172.1	163.9	-	-	-	147.7	11.4
2000	154.9	170.3	164.7	162.9	144.5	149.4	143.3	11.6
2005	152.4	170.7	166.8	161.6	137.4	146.1	140.0	12.4
Percent change, 2004-2005	-0.5	0.2	-0.6	-0.3	-1.0	-0.5	-0.6	0.4

1) Excluding housekeeping services and foreign governments and international agencies in Japan.

Source: Ministry of Health, Labour and Welfare.

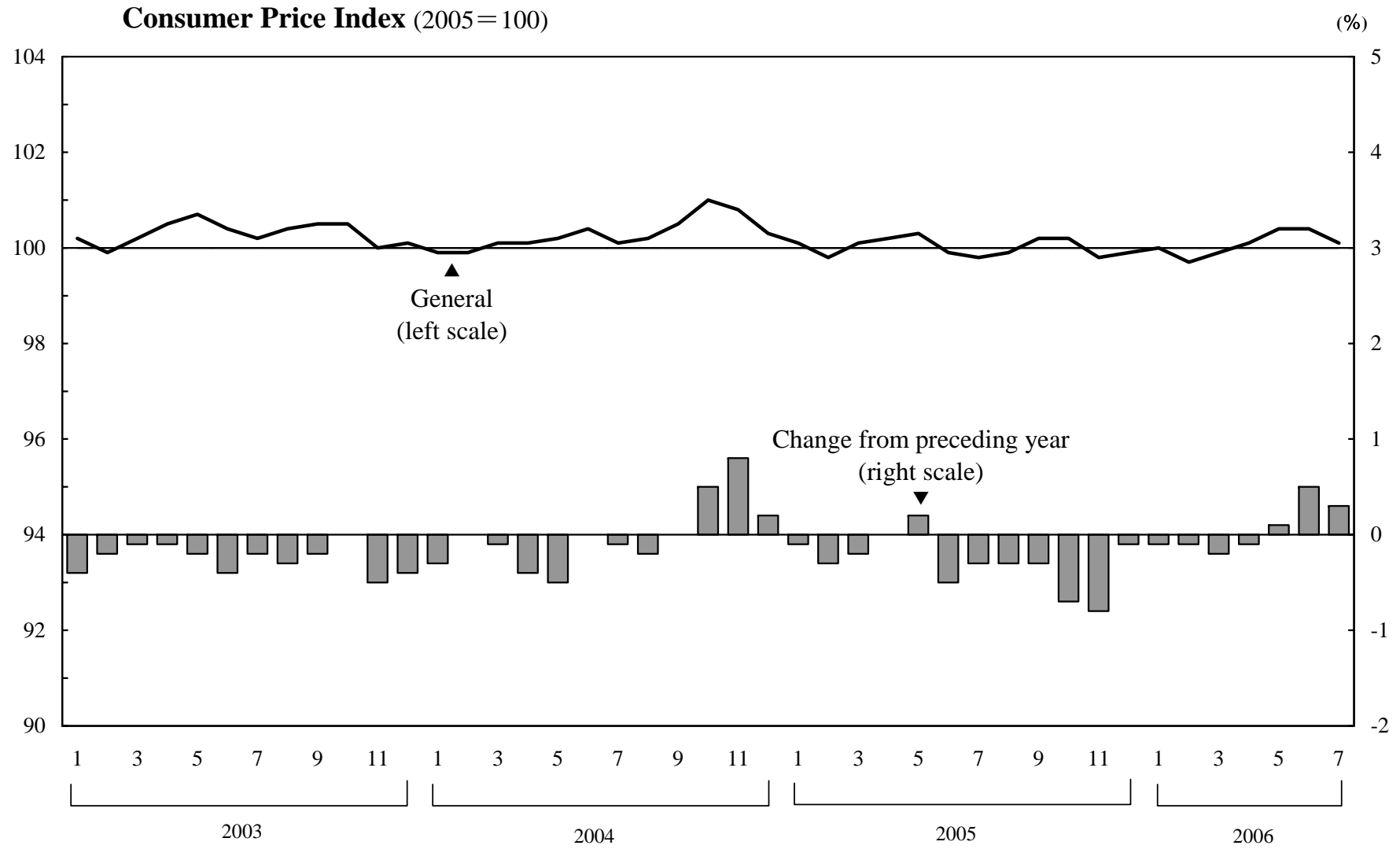
62. Price Indices

Year	Consumer price index (2005=100)		Corporate goods price index (2000=100)				Corporate service price index (2000=100)
	General	Excluding imputed rent	Domestic	Export (yen basis)	Import (yen basis)	Domestic Demand Products 1)	
2002	100.6	100.7	95.7	101.9	101.0	96.4	95.6
2003	100.3	100.4	94.9	97.8	100.1	95.6	94.2
2004	100.3	100.4	96.1	96.4	104.3	97.2	93.7
2005	100.0	100.0	97.7	98.3	118.0	100.4	93.2
Percent change, 2004-2005	-0.3	-0.4	1.7	2.0	13.1	3.3	-0.5

1) Index by stage of demand and use.

Source: Statistics Bureau, MIC; Bank of Japan.

Prices



Source: Statistics Bureau, MIC.

63. Annual Percent Changes in Consumer Price Index, by Major Groups

[In percent]

Item	2002	2003	2004	2005
General	-0.9	-0.3	0.0	-0.3
Food	-0.8	-0.2	0.9	-0.9
Housing	-0.1	-0.1	-0.2	-0.1
Fuel, light and water charges	-1.2	-0.5	0.1	0.8
Furniture and household utensils	-3.6	-3.0	-3.3	-2.3
Clothes and footwear	-2.2	-1.9	-0.2	0.7
Medical care	-1.2	3.4	0.0	-0.4
Transportation and communications	-0.6	0.1	-0.2	0.3
Education	1.0	0.6	0.7	0.7
Reading and recreation	-2.2	-1.5	-1.4	-0.9
Miscellaneous	0.2	0.9	0.6	0.3
Goods	-1.8	-0.8	0.1	-0.3
Services	0.0	0.4	-0.1	-0.3

Source: Statistics Bureau, MIC.

64. Annual Percent Changes in Consumer Price Index, by Country

[In percent]

Year	Japan	Canada	France	Germany	Italy	Korea, Rep. of	U.K.	U.S.A.
2002	-0.9	2.2	1.9	1.4	2.5	2.7	1.7	1.6
2003	-0.3	2.8	2.1	1.1	2.6	3.6	2.9	2.3
2004	0.0	1.9	2.1	1.6	2.1	3.6	3.0	2.7
2005	-0.3	2.2	1.7	2.0	1.8	2.7	2.8	3.4

Source: Statistics Bureau, MIC; Cabinet Office.

Prices

65. Annual Percent Changes in Producers' or Wholesale Price Indices, by Country

[In percent]

Year	Japan Domestic corporate goods price	Canada Industrial products price	France Producer price, intermediate material	Germany Industrial producer price	Italy Industrial producer price	Korea, Rep. of Producer price	U.K. Producer price, all mfg. products	U.S.A. Producer price, all finished commodities
2002	-2.0	0.1	-0.5	-2.4	0.2	-0.3	0.0	-1.3
2003	-0.8	-1.4	0.4	1.7	1.6	2.2	1.5	3.2
2004	1.3	3.2	2.6	1.6	2.7	6.1	2.5	3.6
2005	1.7	1.5	2.9	4.6	4.0	2.1	2.8	4.9

Source: Cabinet Office; Bank of Japan.

66. Purchasing Power Parities: 2005

Item	Japan	Canada	France	Germany	Italy	U.K.	U.S.A.
	Yen	C. dollar	Euro	Euro	Euro	Pound	U.S. dollar
Purchasing power parities 1)	129	1.25	0.902	0.913	0.850	0.627	1.00
Comparative price levels 2)	114	100	109	111	103	111	98
Per capita volume indices 3)	107	115	104	103	98	110	144

1) OECD estimates. Shown in respective country's currency unit per U.S. dollar.

2) OECD estimates. OECD average=100. 3) OECD average=100. Current PPPs.

Source: OECD.

67. Number of Dwellings and Housing Conditions

Item	1983	1988	1993	1998	2003
Total dwellings (1,000 units)	38,607	42,007	45,879	50,246	53,891
Occupied	34,705	37,413	40,773	43,922	46,863
Detached houses	22,306	23,311	24,141	25,269	26,491
Tenement houses	2,882	2,490	2,163	1,828	1,483
Apartments	9,329	11,409	14,267	16,601	18,733
Other	187	203	202	224	156
Unoccupied	3,902	4,594	5,106	6,324	7,028
Vacant	3,302	3,940	4,476	5,764	6,593
Dwellings per household (unit)	1.10	1.11	1.11	1.13	1.14
Rate of owned houses (%)	62.4	61.3	59.8	60.3	61.2
Rate of owner occupied households (%)	62.0	61.1	59.6	60.0	60.9
Floor space per dwelling (m ²)	85.92	89.29	91.92	92.43	94.85
Number of rooms per dwelling	4.73	4.86	4.85	4.79	4.77
Persons per room	0.71	0.66	0.62	0.59	0.56

Source: Statistics Bureau, MIC.

Household Finances

68. Average Monthly Consumption Expenditures of All Households : Multi-person households

[Per household in yen. All households refer to households excluding those engaged in agriculture, forestry and fisheries, and one-person households]

Year	Consumption expenditures	Food	Housing	Fuel, light and water charges	Furniture and household utensils	Clothes and footwear	Medical care
1990	311,174	78,956	14,814	17,147	12,396	22,967	8,866
1995	329,062	77,886	21,365	19,911	12,529	20,229	9,845
2000	317,133	73,844	20,787	21,477	11,018	16,188	11,323
2005	300,903	68,910	19,553	21,379	10,010	13,440	13,044
Percent change, 2004-2005							
Nominal	-1.1	-1.7	0.4	1.9	0.5	-1.0	6.8
Real	-0.7	-0.8	0.7	1.1	2.9	-1.7	7.2

Year	Transportation and communication	Education	Reading and recreation	Other consumption expenditure	Miscellaneous	Social expenses	Goods and services expenditures
1990	29,469	14,471	30,122	81,966	17,207	29,830	257,020
1995	32,966	15,381	31,550	87,400	19,175	32,749	272,574
2000	36,208	13,860	32,126	80,302	19,595	29,745	267,644
2005	38,738	12,495	31,028	72,308	21,790	26,223	259,993
Percent change, 2004-2005							
Nominal	-1.4	-8.0	-0.7	-2.0	5.7	-4.6	-0.4
Real	-1.7	-8.6	0.2	-	5.4	-4.2	0.0

Source: Statistics Bureau, MIC.

69. Average Monthly Receipts and Disbursements of Workers' Households : Multi-person households

[Per household in yen. Workers' households refer to households excluding those engaged in agriculture, forestry and fisheries, and one-person households]

Year	Income	Consumption expenditures	Food	Housing	Fuel, light and water charges	Clothes and footwear	Transportation and communication
1990	521,757	331,595	79,993	16,475	16,797	23,902	33,499
1995	570,817	349,663	78,947	23,412	19,551	21,085	38,524
2000	560,954	340,977	74,889	21,674	21,124	17,192	43,660
2005	522,629	328,649	70,964	21,964	21,217	14,998	46,980
Percent change, 2004-2005							
Nominal	-1.4	-0.7	-1.5	5.6	1.5	0.7	-0.5
Real	-1.0	-0.3	-0.6	5.9	0.7	0.0	-0.8

Year	Education	Reading and recreation	Non-consumption expenditures	Goods and services expenditures	Disposable income	Average propensity to consume (%)	Ratio of savings to disposable income (%)
1990	16,827	31,761	81,218	267,440	440,539	75.3	16.9
1995	18,467	33,221	88,644	284,386	482,174	72.5	18.0
2000	18,214	33,831	88,132	282,290	472,823	72.1	18.6
2005	18,416	33,022	82,957	279,985	439,672	74.7	16.1
Percent change, 2004-2005							
Nominal	-6.6	-2.0	-2.5	0.0	-1.2	1) 0.3	1) -0.7
Real	-7.2	-1.1	-	0.4	-0.8	-	-

1) Change in percentage point, 2004-2005.

Source: Statistics Bureau, MIC.

Household Finances

70. Average Annual Income and Expenditures of Commercial Farm Households

[In thousands of yen. Commercial farm households refer to those households which have 30 and over ares of land in cultivation, or an annual income of at least 500,000 yen from the sale of farm produce]

Year	Annual income				Taxes and public charges	Disposable income
		Agricultural income	Non-agricultural income	Social security benefits, etc.		
1990 1)	8,399	1,163	5,438	1,797	1,409	6,990
1995	# 8,917	# 1,442	# 5,453	# 2,022	# 1,442	# 7,475
2000	8,280	1,084	4,975	2,221	1,399	6,881
2003	# 5,113	# 1,297	# 2,239	# 1,572	# 735	# 4,378
2004	5,083	1,262	2,241	1,575	743	4,340
Percent change, 2003-2004	-0.6	-2.7	0.1	0.2	1.1	-0.9

1) Fiscal year. Including non-commercial farm households.

Source: Ministry of Agriculture, Forestry and Fisheries.

71. Household Penetration of Selected Durable Consumer Goods: Multi-person households

[In percent. As of end of March]

Item	2000	2005	2006	Item	2000	2005	2006
Clothes driers	21.7	25.9	27.3	DVD players/recorders	-	49.0	61.1
Dish washers	-	21.6	24.4	Personal computers	38.6	64.6	68.3
Room air-conditioners	86.2	87.0	88.2	Facsimiles	32.9	49.7	56.7
Color televisions	99.0	99.3	99.4	Mobile phones	-	82.0	85.3
Video cameras	37.9	39.6	40.2	Passenger cars	83.6	81.6	83.9
Digital cameras	-	46.2	53.7	New cars	49.7	48.2	51.1

Source: Cabinet Office.

72. Average Amount of Savings and Debts of Workers' Households : Multi-person households

[Per household in 10 thousands of yen. Workers' households, including those engaged in agriculture, forestry and fisheries]

Period average	Annual income	Savings	Ratio of savings to annual income (%)	Debts		Ratio of debts to annual income (%)	
				House and land loan	House and land loan	Debts	House and land loan
2005, Average	719	1,292	179.7	616	561	85.7	78.0
Jan.-Mar.	728	1,289	177.1	638	582	87.6	79.9
Apr.-Jun.	730	1,297	177.7	623	569	85.3	77.9
Jul.-Sep.	713	1,286	180.4	604	548	84.7	76.9
Oct.-Dec.	708	1,297	183.2	598	546	84.5	77.1

Source: Statistics Bureau, MIC.

73. Average Assets of All Households : Multi-person households

[In 10 thousands of yen]

Year	Net assets 1)	Financial assets 2)	House and land assets	House and land assets		Durable goods, etc.	Annual income
				Land	Houses		
1999	4,387	895	3,297	2,677	620	194	761
2004	3,900	950	2,786	2,180	606	164	696
Percent change, 1999-2004	-11.1	6.1	-15.5	-18.6	-2.3	-15.3	-8.5

1) House assets and durable goods are depreciated over useful lives from gross assets. 2) Savings minus debts.

Source: Statistics Bureau, MIC.

Social Security

74. Social Security Benefit Expenditures, by Sector

[In billions of yen]

Social Security Benefit Expenditures	FY 1990	FY 1995	FY 2000	FY 2002	FY 2003	Percent change, FY 2002-2003
Total expenditures	47,220	64,731	78,127	83,567	84,267	0.8
Medical care 1)	18,380	24,059	26,006	26,274	26,615	1.3
Pensions 2)	24,042	33,499	41,201	44,378	44,785	0.9
Social welfare and others 3)	4,799	7,174	10,920	12,914	12,867	-0.4
Per capita expenditures (1,000 yen)	382	516	616	656	660	0.7
Proportion to national income (%)	13.56	17.30	20.61	23.08	22.86	4) -0.22
Medical care	5.28	6.43	6.86	7.26	7.22	4) -0.04
Pensions	6.90	8.95	10.87	12.26	12.15	4) -0.11
Social welfare and others	1.38	1.92	2.88	3.57	3.49	4) -0.08

1) Medical insurance and medical benefit for the elderly, etc. 2) Public pensions such as employees' pension and national pension; gratuities for retired public employees, etc. 3) Social welfare services, nursing care, public assistance other than medical care, child allowance, etc. 4) Change in percentage points, FY2002-2003.

Source: Ministry of Health, Labour and Welfare.

75. Social Security Benefit Expenditures, by Institutional Scheme

[In billions of yen]

Item	FY 1990	FY 1995	FY 2000	FY 2002	FY 2003
Total	47,220	64,731	78,127	83,567	84,267
Medical insurance	11,554	14,623	14,573	14,440	14,712
Health care for the aged 1)	5,828	8,583	10,447	# 10,801	# 10,722
Pension insurance	21,618	31,157	39,173	42,503	42,996
Employment insurance 2)	1,167	2,207	2,665	2,619	2,025
Workers' accident compensation	927	1,029	1,019	983	973
Family allowance 3)	445	511	712	896	916
Public assistance	1,293	1,485	1,930	2,187	2,366
Social welfare	1,671	2,603	2,186	2,461	2,470
Public health service	644	607	563	552	601
Gratuities for retired public employees	1,849	1,721	1,420	1,280	1,204
Benefits for war victims	225	206	188	179	172

1) Including public health measures (e.g., medical check-ups and counseling, etc.). 2) Including unemployment benefits for Seamen's insurance. 3) Including income support for single parent families and families with handicapped children.

Source: Ministry of Health, Labour and Welfare.

Social Security

76. Number of Persons Insured under Public Pension

[In 10 thousands]

End of fiscal year	Total	Employees' pension insurance 1)	Mutual aid associations 2)	National pension	
		Category 2		Category 1 3)	Category 3 4)
1990	6,631	3,100	578	1,758	1,196
1995	6,995	3,281	584	1,910	1,220
2000	7,049	3,219	523	2,154	1,153
2003	7,029	3,212	468	2,240	1,109
2004	7,029	3,249	464	2,217	1,099
Percent change, 2003-2004	0.0	1.2	-0.9	-1.0	-0.9

1) Including seamen's insurance. 2) National and local public services employees, private school teachers and employees, etc.

3) Self-employed workers, agricultural workers, students aged 20 years and older, etc. 4) Spouses dependent on category 2.

Source: Social Insurance Agency.

77. Social Welfare Institutions

[As of October 1]

Institution	1995		2000		2004		
	Institutions	Inmates	Institutions	Inmates	Institutions	Inmates	Personnel 1)
Institutions under the Protection Law 2)	340	21,217	296	19,891	297	19,982	6,208
Welfare for the elderly	12,904	307,912	# 28,643	# 416,176	39,475	497,483	490,228
Nursing homes	947	64,263	949	64,026	962	63,913	19,714
Special nursing homes	3,201	218,769	# 4,463	# 296,082	5,291	357,891	213,893
Welfare centers	2,214	-	2,271	-	2,298	-	8,349
Rehabilitation for the physically handicapped	1,321	41,484	1,766	48,905	2,263	56,319	37,733
Protection for women	52	771	50	722	50	639	437
Child welfare 3)	33,231	1,749,142	33,089	1,976,976	33,406	2,164,040	478,684
Day nurseries	22,488	1,678,866	22,199	1,904,067	22,494	2,090,374	404,912
Residential care for the mentally retarded	2,332	120,025	3,002	150,873	4,321	182,649	82,312
Maternal and child welfare	92	-	90	-	84	-	344
Rehabilitation for the mentally disordered	233	3,259	521	8,640	1,530	20,977	7,636
Other 4)	8,281	54,752	8,418	56,531	8,672	82,609	43,067
Pay nursing homes for the elderly	272	19,829	350	26,616	1,045	55,461	29,112

1) In full time equivalent. 2) "Inmates" and "personnel" exclude medical care facilities. 3) "Inmates" exclude homes of living assistance for mothers and children, and maternity homes; "personnel" excludes maternity homes. 4) "Inmates" and "personnel" exclude medical treatment facilities, free of charge or at low cost.

Source: Ministry of Health, Labour and Welfare.

Health and Sanitation

78. Medical Care Expenditure Estimates

[In billions of yen]

Item	FY 2002	FY 2003	FY 2004	Percent distribution	Percent change, FY2003-2004
National medical care expenditure (NME)	30,950.7	31,537.5	32,111.1	100.0	1.8
Public expense	1,721.8	1,820.6	1,869.8	5.8	2.7
Coverage of Medical insurance	13,985.5	14,103.2	14,751.4	45.9	4.6
Coverage of Health care for the aged	10,665.2	10,668.6	10,573.0	32.9	-0.9
Patients' payments	4,578.2	4,945.1	4,916.9	15.3	-0.6
Medical care expenditure per capita (1,000 yen)	242.9	247.1	251.5	-	1.8
NME/National income (%)	8.70	8.80	8.89	-	-

Source: Ministry of Health, Labour and Welfare.

79. Medical Institutions and Personnel

[As of October 1]

Year	Medical institutions			Beds	Physicians 1)	Dentists 1)	Nurses 1)
	Hospitals	General clinics	Dental clinics				
1990	10,096	80,852	52,216	1,949,493	211,797	74,028	404,764
2000	9,266	92,824	63,361	1,864,178	255,792	90,857	653,617
2004	9,077	97,051	66,557	1,812,722	270,371	95,197	760,221
Percent change, 2003-2004	-0.5	1.0	1.1	-0.4	2) 2.9	2) 2.5	2) 8.0

1) As of December 31. 2) Percent change, 2002-2004.

Source: Ministry of Health, Labour and Welfare.

80. Deaths, by Major Cause

Year	Malignant neoplasms		Heart diseases 1)		Cerebrovascular diseases		Pneumonia	
	Deaths	Rates 2)	Deaths	Rates 2)	Deaths	Rates 2)	Deaths	Rates 2)
1990	217,413	177.2	165,478	134.8	121,944	99.4	68,194	55.6
1995	263,022	211.6	139,206	112.0	146,552	117.9	79,629	64.1
2000	295,484	235.2	146,741	116.8	132,529	105.5	86,938	69.2
2005 *	325,885	258.2	173,026	137.1	132,799	105.2	107,210	84.9
Percent change, 2004-2005	1.7	1.7	8.4	8.4	2.9	2.8	12.2	12.2

1) Excluding hypertensive heart disease. 2) Per 100,000 population.

Source: Ministry of Health, Labour and Welfare.

Education

81. Schools, Teachers and Students

[As of May 1]

Year	Kindergartens	Elementary schools	Lower secondary schools	Upper secondary schools	Junior colleges	Universities
Schools (Number)						
1995	14,856	24,548	11,274	5,501	596	565
2000	14,451	24,106	11,209	5,478	572	649
2005	13,949	23,123	11,035	5,418	488	726
Percent change, 2004-2005	-0.8	-1.3	-0.6	-0.2	-3.9	2.4
Teachers (1,000)						
1995	103	431	271	281	21	137
2000	106	408	258	269	17	151
2005	110	417	249	251	12	162
Percent change, 2004-2005	0.5	0.5	-0.4	-1.6	-6.1	1.8
Students (1,000)						
1995	1,808	8,370	4,570	4,725	499	2,547
2000	1,774	7,366	4,104	4,165	328	2,740
2005	1,739	7,197	3,626	3,605	219	2,865
Percent change, 2004-2005	-0.8	-0.0	-1.0	-3.1	-6.2	2.0

Source: Ministry of Education, Culture, Sports, Science and Technology.

82. Ratio of Persons Advanced to Higher Levels of Education

[In percent]

Year	Upper secondary schools 1)	Universities and junior colleges 2)		
		Male	Female	Universities
1975	91.9	43.6	32.9	12.7
1980	94.2	41.3	33.3	12.3
1985	94.1	40.6	34.5	13.7
1990	95.1	35.2	37.4	15.2
1995	96.7	42.9	47.6	22.9
2000	97.0	49.4	48.7	31.5
2005	97.6	53.1	49.8	36.8

1) Beginning 1980, including persons advanced to correspondence courses (regular courses). 2) Including those who had already graduated from upper secondary school in the past.

Source: Ministry of Education, Culture, Sports, Science and Technology.

83. Overseas Students, by Country/Region

[Persons. As of May 1]

Country/Region	1990	1995	2000	2005
Total	41,347	53,847	64,011	121,812
China	18,063	24,026	32,297	80,592
Korea, Rep. of	8,050	12,644	12,851	15,606
Taiwan	6,484	5,180	4,189	4,134
Malaysia	1,544	2,230	1,856	2,114
Viet Nam	46	204	717	1,745
Thailand	856	1,010	1,245	1,734
U.S.A.	1,180	1,087	1,044	1,646
Indonesia	948	1,085	1,348	1,488
Bangladesh	394	710	800	1,331
Mongolia	15	117	342	924
Sri Lanka	148	285	429	907
Myanmar	119	251	350	651

Source: Ministry of Education, Culture, Sports, Science and Technology; Japan Student Services Organization.

Culture

84. Publications and Newspapers

Year	Books (New publications)			Monthly magazines		
	Number of titles	Estimated circulation (Million)	Estimated amount (100 million yen)	Number of titles	Estimated circulation (Million)	Estimated amount (100 million yen)
1990	38,680	343	3,344	2,721	2,601	11,727
1995	# 61,302	# 422	# 4,655	3,035	3,121	15,750
2000	67,522	418	4,966	3,336	2,963	15,518
2003	72,608	398	4,821	3,443	2,820	14,859
2004	74,587	396	4,824	3,505	2,808	14,886
Percent change, 2003-2004	2.7	-0.4	0.1	1.8	-0.4	0.2

Year	Weekly magazines			Newspapers		
	Number of titles	Estimated circulation (Million)	Estimated amount (100 million yen)	Circulation 1) (1,000)	Morning and evening edition	Morning edition only
1990	81	1,829	4,202	51,908	20,616	29,268
1995	81	1,943	4,910	52,855	19,192	31,645
2000	97	1,658	4,543	53,709	18,187	33,703
2003	111	1,491	4,307	52,875	17,465	33,781
2004	119	1,399	4,149	53,022	17,342	34,066
Percent change, 2003-2004	7.2	-6.2	-3.7	0.3	-0.7	0.8

1) Total circulation of major newspapers: 125 papers for 1990, 121 papers for 1995, 122 papers for 2000, 123 papers for 2003, and 120 papers for 2004. As of October each year. A set of morning and evening edition is counted as one.

Source: The All Japan Magazine and Book Publisher's and Editor's Association; The Japan Newspaper Publishers and Editors Association.

85. Yearly Amount of Reading and Recreational Expenditures : Multi-person households

[Per household in yen. Excluding agricultural, forestry and fisheries households]

Year	Reading and recreational expenditure	Recreational durable goods				Recreational goods	Stationery	Sporting goods
		TV sets	Personal computers	Cameras				
1990	373,515	41,052	9,380	6,139	1,653	83,889	8,370	22,699
1995	393,170	35,134	8,711	8,015	1,659	87,845	8,754	22,111
2000	404,444	42,679	7,172	17,737	2,266	91,580	7,953	19,345
2004	393,391	37,075	9,255	11,251	2,405	84,102	7,235	16,534
2005	388,777	39,822	11,311	11,860	2,582	81,891	6,882	15,809
Percent change, 2004-2005	-1.2	7.4	22.2	5.4	7.4	-2.6	-4.9	-4.4

Year	Books and other reading materials	Newspapers		Recreational services	Hotel charges	Package tours	Lesson fees	Other recreational services
		Newspapers	Books					
1990	50,565	32,032	10,987	198,010	18,585	65,750	49,185	64,490
1995	55,855	37,672	10,995	214,335	20,544	71,330	48,970	73,490
2000	55,081	36,474	11,042	215,104	22,360	71,403	43,408	77,933
2004	55,713	38,230	10,581	216,502	21,726	60,650	44,293	89,833
2005	55,132	37,801	10,520	211,931	20,885	60,789	40,918	89,339
Percent change, 2004-2005	-1.0	-1.1	-0.6	-2.1	-3.9	0.2	-7.6	-0.5

Source: Statistics Bureau, MIC.

Culture

86. Time Use per Day, by Age Group : 2001

[In hours and minutes. Weekly Average]

Age group	Male					Female				
	Primary activities 1)	Secondary activities 2)		Tertiary activities 3)	Primary activities 1)	Secondary activities 2)		Tertiary activities 3)		
		Work	Housework			Work	Housework			
Total	10.30	6.51	4.56	0.31	6.39	10.42	7.01	2.27	3.34	6.17
10-14	11.04	5.44	0.00	0.10	7.12	11.11	6.01	0.00	0.18	6.48
15+	10.28	6.55	5.14	0.33	6.37	10.40	7.04	2.35	3.05	6.15
(Reference)										
65+	11.48	3.06	2.01	0.57	9.06	11.50	4.21	0.49	3.30	7.49

1) Primary activities refer to those which are physiologically necessary, such as "sleeping," "eating and drinking," and "personal care."

2) Secondary activities comprise those which each person is committed to perform as a member of the family or of the society, such as "work (for pay or profit)," "schoolwork," "commuting to and from school or work," and "housework ("nursing," "child care," and "shopping")." 3) Tertiary activities correspond to "leisure activities," as well as other activities not classified in the primary and secondary activities.

Source: Statistics Bureau, MIC.

87. Participation Rates in Travel : 2001

[In percent. Percentage of people, 10 years and over, who engaged in the activity within the past 12 months]

Year	Population, 10 years and over (1,000)	Total	Day trips	Travel, two or more days				
				Travel, domestic and abroad	Travel, domestic	Sightseeing	Travel, abroad	Sightseeing
Total	113,095	80.9	65.6	68.7	67.0	54.5	11.7	10.0
10-14	6,364	87.1	73.2	73.6	72.5	60.2	5.7	5.1
15+	106,731	80.5	65.1	68.4	66.7	54.2	12.0	10.3
(Reference)								
70+	14,293	61.5	45.3	47.7	46.6	40.5	5.3	4.9
Male	55,084	79.8	62.9	69.2	67.5	53.7	11.8	9.2
10-14	3,259	86.4	72.3	73.7	72.6	61.4	5.1	4.6
15+	51,825	79.4	62.3	68.9	67.2	53.2	12.2	9.5
(Reference)								
70+	5,796	64.4	45.6	52.3	51.0	44.2	6.5	6.0
Female	58,011	81.8	68.2	68.2	66.5	55.3	11.6	10.8
10-14	3,105	87.8	74.2	73.6	72.4	59.0	6.4	5.6
15+	54,906	81.5	67.8	67.9	66.2	55.1	11.9	11.1
(Reference)								
70+	8,498	59.5	45.2	44.6	43.6	38.0	4.4	4.2

Source: Statistics Bureau, MIC.

Crime

88. Penal Code Offenses and Special Law Offenses

Item	1990	1995	2000	2005	Percent change, 2004-2005
Penal code offenses 1)					
Number of reported penal code offenses	1,636,628	1,782,944	2,443,470	2,269,293	-11.5
Arrestees	293,264	293,252	309,649	386,955	-0.5
Juveniles 2)	154,168	126,249	132,336	123,715	-8.3
Special Law offenses 1)					
Persons served	84,953	74,037	64,622	78,758	3.0
Juveniles 2)	28,885	10,439	7,481	5,603	-10.7
Violations of Road Traffic Law					
Persons served	1,159,122	1,013,446	977,185	801,718	-2.8
Juveniles 2)	209,333	112,825	90,022	54,334	-9.7

1) Excluding traffic offenses. 2) Those who were 14 to 19 years of age at the time of offense and disposal.

Source: National Police Agency.

89. Traffic Violations

Item	1990	1995	2000	2005	Percent change, 2004-2005
Persons arrested involving deaths or injuries due to occupational negligence	606,386	676,927	850,493	891,524	-1.0
Juveniles 1)	61,794	44,171	40,447	34,738	-8.7
Cases served violating Road Traffic Law	9,103,918	8,432,772	7,925,105	8,967,549	5.1
Juveniles 1)	1,402,160	803,803	644,370	457,372	-7.2
Speed violations	2,874,836	2,293,252	2,592,145	2,763,193	-2.0
Juveniles 1)	308,186	148,957	129,984	99,964	-10.4
Parking violations	2,472,064	2,538,829	1,899,398	1,593,377	-4.5
Juveniles 1)	142,070	86,168	62,188	43,901	-7.0

1) Those who were 14 to 19 years of age at the time of offense and disposal.

Source: National Police Agency.

Environment

90. Emissions of Green House Gas in Japan

[Million tons of CO₂ equivalent]

Fiscal year	Total	CO ₂	CH ₄	N ₂ O	HFCs	PFCs	SF ₆
1990	1,205.1	1,138.8	33.2	33.2	-	-	-
1995	1,334.8	1,219.5	31.3	34.4	20.2	12.6	16.9
2000	1,348.8	1,251.1	27.3	31.3	18.5	13.7	6.8
2004	1,354.9	1,279.2	24.4	28.4	8.5	9.9	4.5
Percent change, 1990-2004	8.0	12.3	-26.4	-14.4	1) -58.0	1) -21.1	1) -73.6
2003-2004	-0.2	-0.0	-1.5	1.2	-30.8	10.5	-5.7

1) Percent change, FY 1995-2004.

Source: Ministry of the Environment.

91. Breakdown of Carbon Dioxide Emissions in Japan

[Million tons of CO₂. Direct emissions]

Fiscal year	Total	Energy sector	Industrial sector	Residential sector	Commercial sector	Transportation sector	Industrial processes	Waste
1990	1,139	315	390	57	84	211	60	22
1995	1,219	333	385	66	93	251	62	28
2000	1,251	347	387	69	101	259	55	33
2004	1,279	378	389	65	106	254	50	36
Percent change, 1990-2004	12.3	20.0	-0.1	13.9	26.9	20.6	-15.8	59.9
2003-2004	-0.0	-1.1	1.4	-0.8	-1.4	-0.1	0.9	1.1

Source: Ministry of the Environment.

92. CO₂ Emissions from Energy Use: 2003

Country/Region	Total (million tons)	Per capita (tons)	Country/Region	Total (million tons)	Per capita (tons)
World	25,597	3.99	Korea, Rep. of	460	9.36
OECD, total	12,781	11.08	Luxembourg	10	21.96
Japan	1,224	9.41	Mexico	383	3.64
Australia	337	17.35	Netherlands	184	11.38
Austria	75	9.22	New Zealand	33	8.09
Belgium	120	11.57	Norway	27	7.84
Canada	533	17.49	Poland	305	7.68
Czech Republic	122	11.47	Portugal	59	5.64
Denmark	57	10.43	Spain	313	7.68
Finland	74	13.93	Sweden	54	5.98
France	384	6.33	Switzerland	43	5.96
Germany	847	10.35	Turkey	204	2.87
Greece	90	8.57	U.K.	547	9.10
Hungary	58	5.70	U.S.A.	5,707	19.68
Iceland	2	7.60	Non-OECD, total	11,999	2.22
Ireland	42	10.28	China	4,068	2.89
Italy	450	7.80	Former U.S.S.R.	2,361	7.99

Source: OECD/IEA.

Environment

93. Residential Waste Generation and Disposal

Item	FY 2001	FY 2002	FY 2003	Percent change, FY2002-2003
Waste generated (1,000 tons)	52,097	51,610	51,607	-0.0
Waste generated per capita per day (grams)	1,124	1,111	1,106	-0.5
Waste collected by communities (1,000 tons)	2,837	2,807	2,829	0.8
Waste processed (1,000 tons)	51,961	51,445	51,538	0.2
Recycling after intermediate treatment (1,000 tons)	3,116	3,503	4,056	15.8
Waste recycling rates (%)	15.0	15.9	16.8	1) 0.9
Waste final disposed (1,000 tons)	9,949	9,030	8,452	-6.4
Residual capacity of landfill sites (1,000 m ³)	152,610	144,766	137,079	-5.3
Per capita cost of waste disposal (yen)	20,500	18,800	15,400	-18.1

1) Change in percentage points, FY 2002-2003.

Source: Ministry of the Environment.

94. Disasters

Year	Natural disasters		Fires			
	Households suffered	Sufferers	Cases	Buildings	Buildings burnt	Value of losses (million yen)
1990	28,420	95,907	56,505	34,768	47,536	148,458
1995	1) 24,120	1) 73,028	62,913	34,539	57,957	193,759
2000	31,888	80,467	62,454	34,028	46,516	150,426
2005	12,236	33,835	57,460	33,049	46,188	151,996
Percent change, 2004-2005	-85.4	-83.1	-4.8	-0.8	0.4	12.3

1) Data relating to the Hanshin-Awaji Earthquake are provisional.

Source: National Police Agency; Fire and Disaster Management Agency.

95. Accidents

Year	Industrial accidents		Road traffic accidents			
	Workers killed	Workers killed or injured 1)	Number of accidents	Persons killed 2)	Persons injured	Persons killed per 100 thousand population 2)
1990	2,550	210,108	643,097	11,227	790,295	9.08
1995	2,414	167,316	761,789	10,679	922,677	8.50
2000	1,889	133,948	931,934	9,066	1,155,697	7.14
2005	1,514	120,354	933,828	6,871	1,156,633	5.38
Percent change, 2004-2005	-6.5	-2.0	-1.9	-6.6	-2.2	-6.6

1) Four or more days of absence from work. 2) Deaths within 24 hours of accidents.

Source: National Police Agency; Ministry of Health, Labour and Welfare.

Comparative International Statistics

96. Comparative International Statistics

[Figures in parentheses refer to years]

Item	Japan	France	Germany	Korea, Rep. of	U.K.	U.S.A.
Demography						
Total population (1,000)	(05) * 127,756	(03) * 59,768	(03) 82,534	(05) 47,254	(03) 59,554	(03) * 290,811
Crude live-birth rate (per 1,000 population)	(05) 8.4	(03) 12.7	(03) 8.6	(04) 9.8	(03) 11.7	(03) 14.1
Crude death rate (per 1,000 population)	(05) 8.6	(03) 9.4	(03) 10.3	(04) 5.1	(03) 10.3	(03) 8.4
Infant mortality rate (per 1,000 live births)	(05) 2.8	(03) 4.4	(03) 4.2	(03) 5.0	(03) 5.3	(03) 6.9
Total fertility rate	(05) 1.25	(03) 1.89	(03) 1.34	(04) 1.16	(03) 1.71	(03) 2.04
Crude marriage rate (per 1,000 population)	(05) 5.7	(03) * 4.6	(03) 4.6	(04) 6.4	(03) 5.1	(03) * 7.5
Crude divorce rate (per 1,000 population)	(05) 2.08	(03) 2.14	(03) 2.59	(04) 2.9	(03) 2.80	(02) 4.0
Life expectancy at birth:						
male (years)	(05) 78.53	(04) 76	(04) 76	(04) 73	(04) 76	(04) 75
female (years)	(05) 85.49	(04) 83	(04) 82	(04) 80	(04) 81	(04) 80
National accounts						
Gross domestic product (GDP) (billion U.S. dollars) 1)	(04) * 4,588.2	(04) 2,046.7	(04) 2,751.1	(04) 679.7	(04) 2,131.1	(04) 11,679.2
Economic growth (%) 2)						
2003	1.8	1.1	-0.2	3.1	2.7	2.7
2004	2.3	2.0	1.6	4.6	3.3	4.2
2005	2.6	1.2	1.0	4.0	1.9	3.5
National income per capita (U.S. dollars) 1)	(04) * 28,657	(04) 28,927	(04) 28,437	(04) 12,266	(04) 32,673	(04) 34,958
Labor						
Average annual hours worked by production workers (manufacturing)	(03) 1,975	(03) 1,538	(03) 1,525	(04) 3) 47.4	(03) 1,888	(03) 1,929

Item	Japan	France	Germany	Korea, Rep. of	U.K.	U.S.A.
Information and communication, etc.						
Mobile phone subscribers (per 100 population)	(04) 71.58	(04) 73.72	(04) 86.42	(04) 76.09	(04) 102.16	(04) 60.97
PCs owned (per 100 population)	(04) 54.15	(04) 48.66	(04) 56.10	(04) 54.49	(04) 60.02	(04) 74.06
Broadband subscribers (per 1,000 population)	(04) * 116.89	(04) 111.76	(04) * 54.16	(04) 247.94	(04) 119.24	(04) 127.56
Motor vehicles owned (per 1,000 population)	(03) 581.78	(03) 596.40	(03) 577.84	(03) 304.45	(03) 442.13	(01) 807.61
Education						
Ratio of students advanced to universities/colleges (%)	(05) 4) 52.3	(03) 41	(02) 4) 38.4	(05) 82.1	(02) 5) 63.1	(01) 4) 48.9
Security						
Crime rate (Reported major offenses per 100,000 population)	(05) 1,775.7	(03) 6,666	(03) 7,963	(04) 1,720	(03) 6) 11,241	(03) 4,063
Arrest rate of major offenses (%)	(05) 28.6	(03) 28.8	(03) 53.1	(04) 80.7	(03) 6) 23.5	(03) * 19.8
Traffic accidents (1,000)	(05) 934	(03) 90	(03) 355	(03) 241	(03) 220	(03) 1,963
Traffic deaths (per 100,000 population) 7)	(04) 6.7	(04) 9.2	(04) 7.1	(04) 13.6	(04) 5.6	(04) 14.5
Hospital beds (per 1,000 population)	(04) 12.8	8) 7.7	8) 8.9	8) 7.1	8) 4.2	8) 3.3
Physicians (per 1,000 population)	(04) 2.1	9) 3.4	9) 3.4	9) 1.6	9) 2.2	(04) 5.5
Medical care expenditure/GDP (%)	(03) 7.9	(03) 10.1	(03) 11.1	(03) 5.6	(03) 8.0	(03) 15.2
Public medical care expenditure/ total medical care expenditure (%)	(03) 81.0	(03) 76.3	(03) 78.2	(03) 49.4	(03) 85.7	(03) 44.6

1) Nominal. 2) Annual growth rates of real GDP. 3) Weekly. 4) Including persons enrolled regardless of age.

5) Including persons enrolled regardless of age and foreign students. 6) England and Wales only. 7) Death within 30 days.

8) Most recent available figures between 2000-2003. 9) Most recent available figures between 1997-2004.

Source: Statistics Bureau, MIC; Cabinet Office; National Police Agency; Ministry of Justice; Ministry of Education, Culture, Sports, Science and Technology; Ministry of Health, Labour and Welfare; United Nations; World Health Organization; International Telecommunication Union; The World Bank; International Road Federation; National Statistical Office, Republic of Korea.

Appendix

List of Selected Government Websites

Statistics Bureau,

Ministry of Internal Affairs and Communications <http://www.stat.go.jp/english/index.htm>

Ministry of Internal Affairs and Communications <http://www.soumu.go.jp/english/index.html>

Prime Minister's Official Residence <http://www.kantei.go.jp/foreign/index-e.html>

Cabinet Office <http://www.cao.go.jp/index-e.html>

Ministry of Justice <http://www.moj.go.jp/ENGLISH/index.html>

Ministry of Foreign Affairs <http://www.mofa.go.jp/index.html>

Ministry of Finance <http://www.mof.go.jp/english/index.htm>

Ministry of Education, Culture, Sports,

Science and Technology <http://www.mext.go.jp/english/index.htm>

Ministry of Health, Labour and Welfare <http://www.mhlw.go.jp/english/index.html>

Ministry of Agriculture, Forestry and Fisheries <http://www.maff.go.jp/eindex.html>

Ministry of Economy, Trade and Industry <http://www.meti.go.jp/english/index.html>

Ministry of Land, Infrastructure and Transport <http://www.mlit.go.jp/english/index.html>

Ministry of the Environment <http://www.env.go.jp/en/index.html>

Bank of Japan <http://www.boj.or.jp/en/index.htm>

© 2006 by Statistics Bureau

Ministry of Internal Affairs and Communications (MIC)

Japan

All rights reserved.

Edited by Statistical Research and Training Institute, MIC

Published by Statistics Bureau, MIC

19-1 Wakamatsu-cho, Shinjuku-ku

Tokyo 162-8668 Japan

Tel: +81-3-5273-2020

Fax: +81-3-5273-1024

E-mail: webmaster@stat.go.jp

Website: <http://www.stat.go.jp/english/data/figures/index.htm>

Printed in Japan