

# D

H-12-D  
April 1980

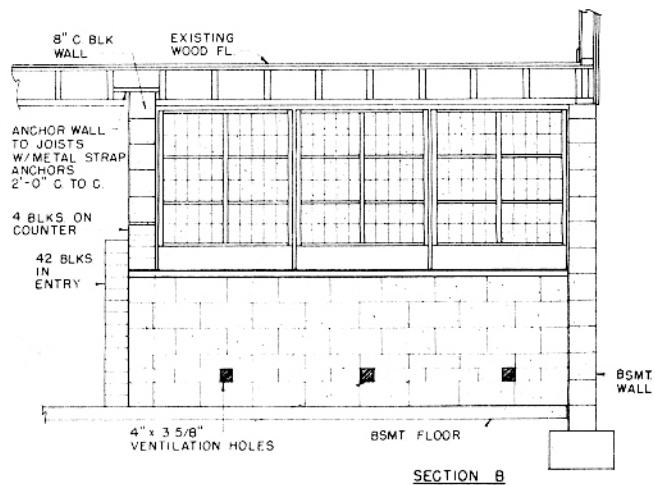
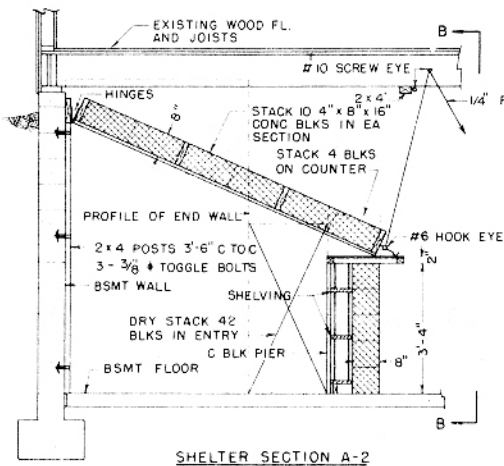
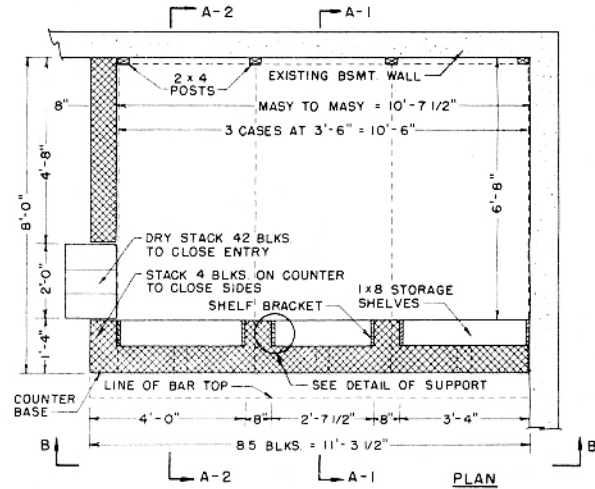
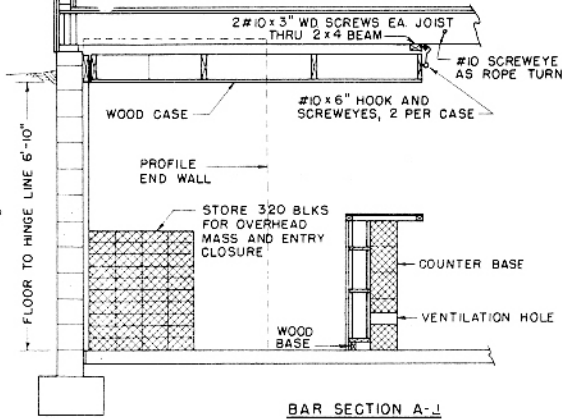
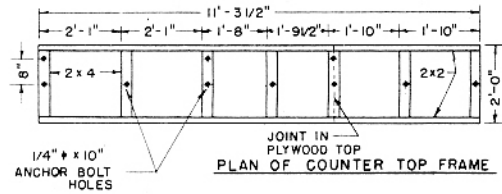
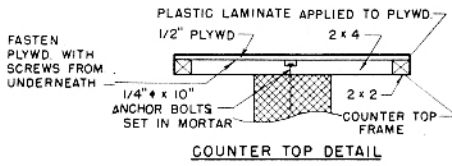
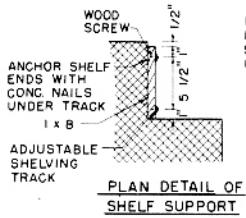
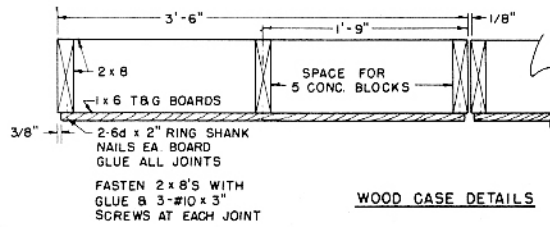
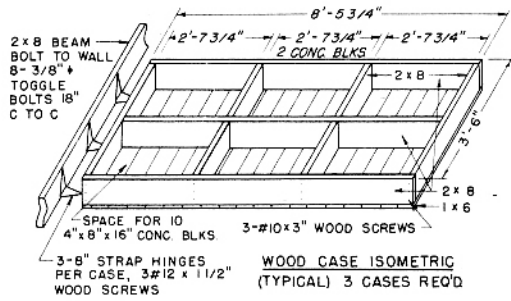


A snack bar built of brick or concrete block can be converted into shelter. The hinged canopy can be tilted-down for filling with brick or concrete block.

## HOME FALLOUT SHELTER snack bar— basement location plan d



FEDERAL EMERGENCY  
MANAGEMENT AGENCY



## GENERAL INFORMATION

The principal feature of this shelter is a sturdy wood overhead canopy which serves as a part of a pre-built snack bar in a basement recreation room. Consisting of three units hinged to the back wall, the canopy can be lowered to rest on the snack bar in an emergency.

In basements where the level of the outside ground is above the top of the canopy, adequate shelter from fallout radiation is provided for 5 people when the canopy is filled with 8" solid concrete block or brick.

The snack bar should not take more than 5 man-days to construct.

## MATERIALS LIST

<u>Item</u>	<u>Actual Number Required</u>
<b>Masonry:</b>	
4" x 8" x 16" solid concrete masonry units or 2-1/4" x 4" x 8" solid bricks	720 blocks or 4320 bricks
<b>Mortar:</b>	
prepared dry-mix bags	3 bags
<b>Lumber: ("Construction" or "No. 1" grades or better)</b>	
posts 2 x 4 x 6'-10"	4 pieces
beam 2 x 8 x 10'-6"	1 piece
cases 2 x 8 x 8'-5-3/4"	6 pieces
2 x 8 x 8'-2-1/2"	3 pieces
2 x 8 x 3'-2-3/4"	6 pieces
2 x 8 x 1'-6-9/16"	12 pieces
1 x 6 x 3'-6" T & G boards*	60 pieces
<b>Counter top:</b>	
edge frame 2 x 2 x 11'-3-1/2"	2 pieces
center frame 2 x 4 x 1-8-3/4"	7 pieces
2' x 11'-3-1/2" x 1/2" plywood (good one side)	1 piece
Plastic laminate if desired	
<b>Shelving:</b>	
uprights 1 x 8 x 3'-4" boards	6 pieces
wood base 2 x 4 x 3'-2-3/4" stress-grade lumber	1 piece
2 x 4 x 2'-6-1/2"	1 piece
2 x 4 x 3'-3-1/4"	1 piece
shelves 1 x 8 x 3'-2-1/4"	3 pieces
1 x 8 x 2'-6"	3 pieces
1 x 8 x 3'-2-3/4"	3 pieces

\*Square-edge boards may be used.

Hardware:

3" x 8" x 1/8" unfinished steel strap hinges	9
#12 x 1-1/2" wood screws, c. s.	72
3/8" diameter x 6" square head unfinished toggle bolts	16
6d ring shanked nails	4 pounds
#10 x 3" wood screws, c. s.	72
glue, protein emulsion (must develop 450 lbs. /sq. in.)	1-1/2 pints
8d finish nails	2 pounds
1/4" diameter x 10" square head unfinished anchor bolts	10
#10 x 6" steel hook and screw eye sets	6
#10 x 6" steel screw eyes	6
1/4" hemp rope, 80 lbs. test	12 feet

CONSTRUCTION SEQUENCE

1. Prepare wood canopy units.
  - a. Assemble units in accordance with drawings on sheet 2.
  - b. Fasten hinges to hinge board with 1-1/2" #12\* wood screws.
  - c. Locate and drill holes in basement wall to receive toggle bolts.
  - d. Bolt hinge board and posts to wall with toggle bolts.
  - e. Fasten the three wood canopy units to hinges with 1-1/2" #12\* wood screws.
2. Prepare snack bar and walls.
  - a. Lay up end wall and counter base using concrete blocks or brick, building in anchor bolts for counter tops. Note drawings show material for base as concrete block. Brick, however, can also be used.
  - b. Assemble counter top frame.
  - c. Bolt counter top frame to counter base with anchor bolts.
  - d. Fasten plywood with plastic laminate to counter top.
  - e. Assemble wood shelves and supports.
  - f. Paint or varnish wood as desired. Use grain sealer for first coat.Shelter is now ready for use when and if needed.
3. Assembly of shelter (emergency actions)
  - a. Unhook and lower canopy to counter top using rope.
  - b. Fill canopy unit with blocks or bricks.
  - c. Occupy shelter and fill entry with blocks or bricks.

\* Drill lead holes 5/32" in diameter, 1-3/8" deep and shank lead holes 3/16" in diameter, 3/8" deep.