



OSBURN HOTEL
Eugene, Oregon

July 3rd, 1936

Accession Helen Hyde

Furniture and indicate
they are to be furniture
use with collection in
the Japanese section

Three sets of 2 chairs each

Two are tall without arms,
two have Japanese Tong
backs, B set are low
with carved backs and
arms. There is also a



arm chair with a
footstool. Also a
sofa settee & table.

Mrs Warner was visiting
Helen Hyde in her country
house in Mukko and while
admiring her furniture
she offered to have dup-
licates made for me. This
furniture was all made
from her own drawings



MEX

36 red embk Hong. 25.

39 " " totic Com 49.

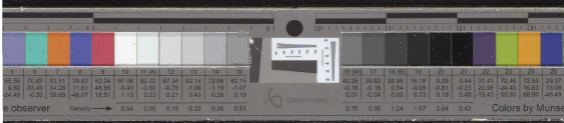
40 red embk. hanging 60

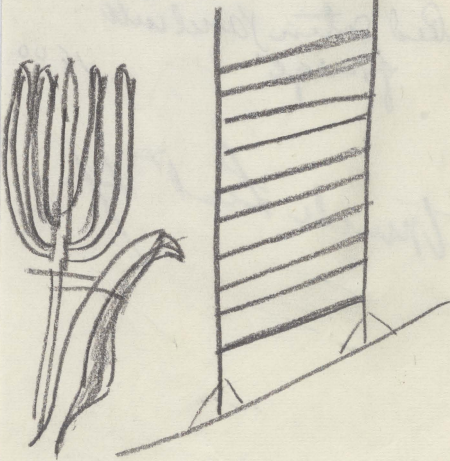
46 " satin hanging 40

48 Small red satin embk 8.00
~~2 men dressing~~

49 Red satin panel with fringe 18.00

Trunk List # 4





6	7	8	9	10	11 (A)	12	13	14	15	16 (M)	17	18 (B)	19	20	21	22	23	24	25
70.82	83.51	39.92	52.24	97.06	92.02	67.34	82.14	72.06	62.10	49.25	38.62	28.86	16.19	8.29	3.44	31.41	72.46	72.95	29.37
-33.43	34.26	11.81	48.55	-0.40	-4.60	-0.75	-1.06	-1.19	-1.07	-0.16	-0.18	0.54	-0.05	-0.81	-0.23	20.08	24.45	16.83	13.06
-0.35	59.60	-46.07	18.51	1.13	0.23	0.21	0.43	0.28	0.19	0.01	-0.04	0.60	0.73	0.19	0.49	-19.43	55.93	68.00	-48.49
observer	Density	→	0.04	0.09	0.15	0.22	0.36	0.51		0.75	0.98	1.24	1.67	2.04	2.42				

Colors by Munsell



OSBURN HOTEL
Eugene, Oregon

July 3rd. 1936

When Murray and I came home in the summer of 1905 we took pictures of a 3-cornered chair and of an arm chair and when we returned to Shanghai we had replicas made of the above chairs in my mother's Peterborough home on Orchard Hill Farm.



These replicas are to be
accessioned and used
as Museum furniture

OSBURN HOTEL
Eugene, Oregon

Aug. 31st 1936

When Murray and I came
to the hotel in the summer of 1902
we took pictures of a
dormer chair and when we
returned to Oregon we
had replicas made of the
above chair and my
mother's (Elizabeth) chair
on which she sat

