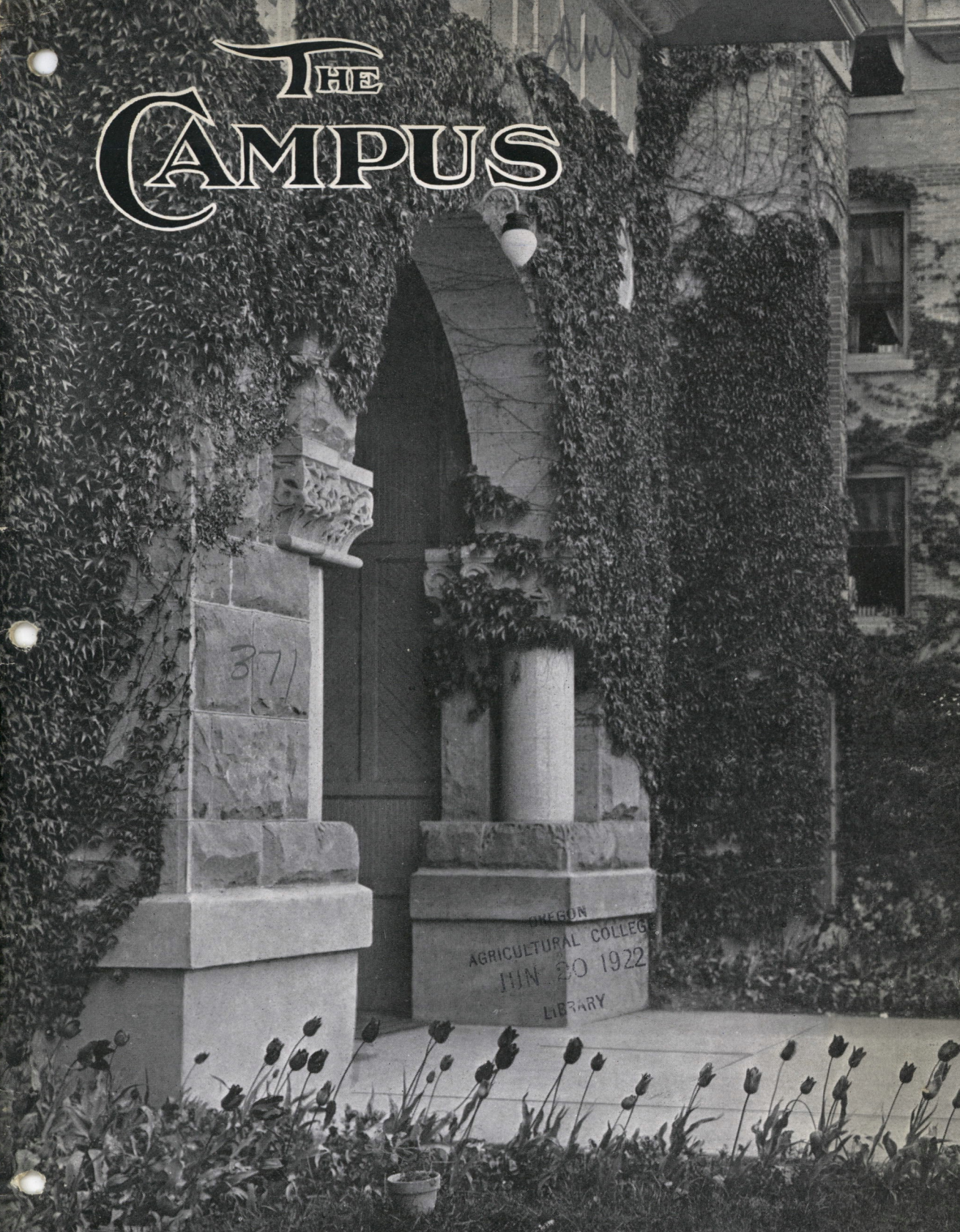


# THE CAMPUS



OREGON  
AGRICULTURAL COLLEGE  
JUN 20 1922  
LIBRARY

371

OREGON AGRICULTURAL COLLEGE  
CORVALLIS, OREGON.



# The Campus



## *The Campus*

What charm and color the old familiar campus gave to our college life! What memories it stamped upon the parchment of our minds!

Like mirrors, men and women reflect their surroundings. Mind and body give back the impressions of the immediate environment. The Greeks grew beautiful in the midst of natural beauty. The Italians, under limpid skies and in a clear, soft atmosphere, developed a genius for line and color. The New Englanders, on their "stern and rock-bound coast," evolved a character of relentless and substantial nobility. The people of the vast plains acquire a freedom and breadth of movement unknown, and often uncongenial, to the dwellers in more crowded quarters. Aspiration clings about the mountain top, and majesty inhabits the drapery of the shore.

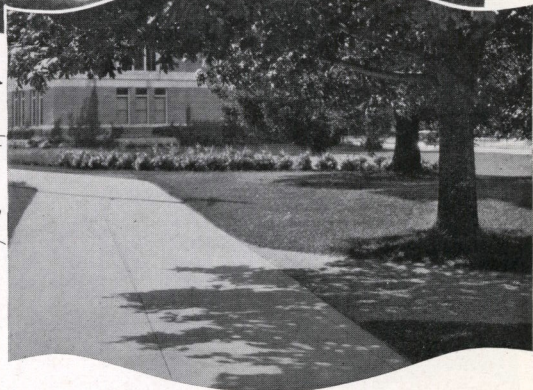
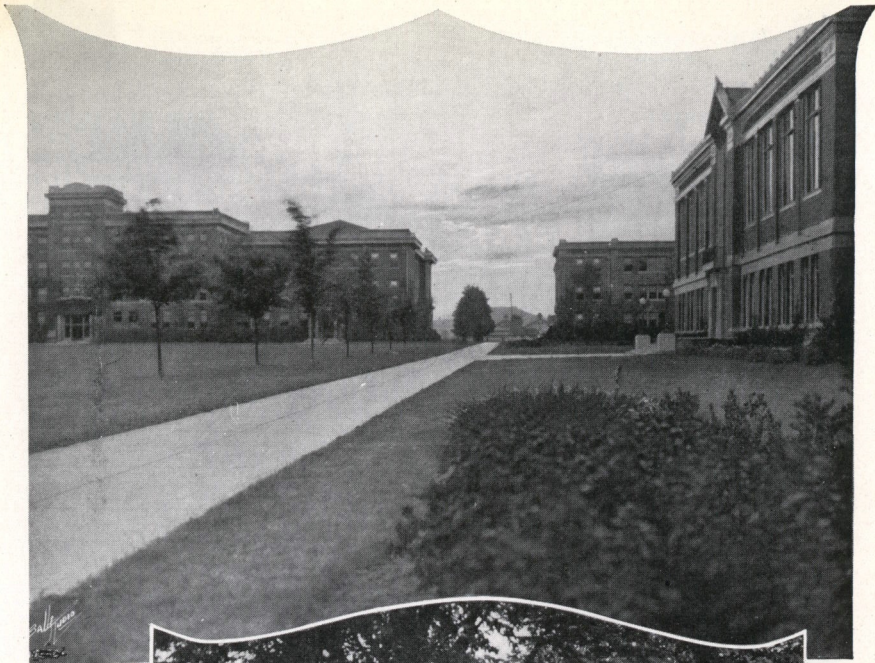
A College campus often becomes the dearest remembrance of a lifetime. Like home, it calls to the imagination of the youth who has once learned to love it; and through all his later years becomes a hallowed shrine of recollection. With the change of season his heart goes out to it; and in times of annual reunion his steps turn toward it as the sailor's toward the sea.

The Oregon Agricultural College has a beautiful campus. Though only thirty-five years have passed since the campus knoll was selected and the cornerstone of the first building was laid, those years have been rich with the associations that make a campus interesting and with the changes that give it dignity and charm. Honest sacrifices have made its acres precious. The losses of two wars have sanctified it. Dramatic crises that have threatened its existence as a campus have reared up noble champions in its defense. And thousands of students, having blessed it by their best endeavors while they lived there, have successively gone forth from its gateways dedicating their lives to the purposes for which it stands and the ideals it has taught them to uphold.

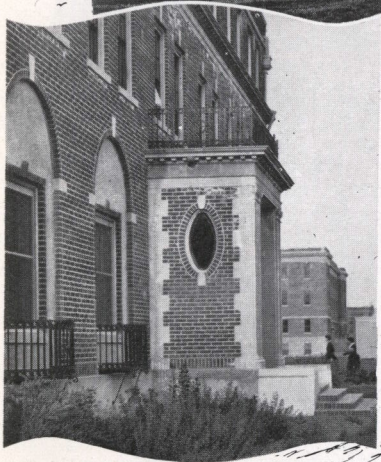
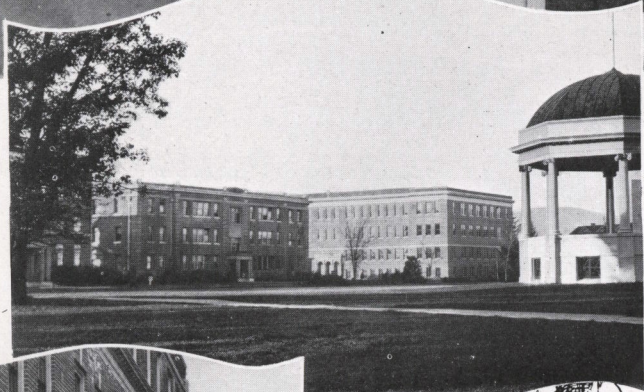
Corvallis, in the center of which the College campus begins, extending westward toward the foothills of the Coast Range, is a congenial college town, just big enough to have first-class modern standards and not so big as to overshadow the institution. As a consequence, everything that Corvallis does she does in the interests of the campus and its population. In the larger sense, she considers the students as her guests. Hence her splendid water system, piped direct from the springs of Mary's Peak. Hence too, her miles of concrete paving, her modern sewer system, her wonderful fire-fighting facilities, her ten churches, and her hospitable homes.

And around Corvallis, in "the heart of the valley," where the waters of the Willamette, Mary's river, and Oak Creek gleam in the sunlight, lie the orchard tracts, the dairy ranches, the poultry plants, and the checkered landscape of a varied and abundant farm life. Back of all, the Cascades to the east, with their perennial snow-covered summits; the Coast Range to the west, with Mary's Peak in the dominant foreground; and still further off, fringed with unbroken masses of evergreen, the gorges and the mountain passes leading to the Pacific.

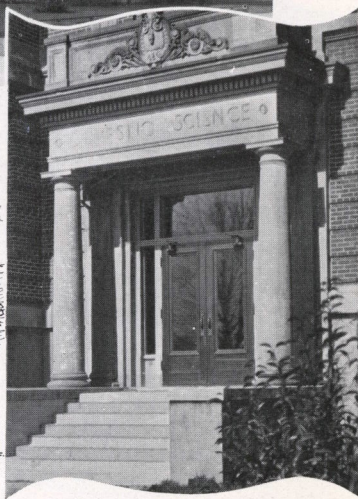
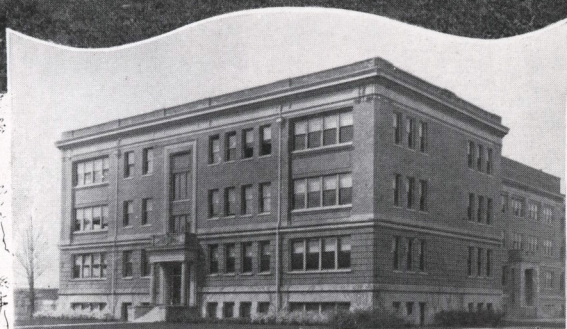
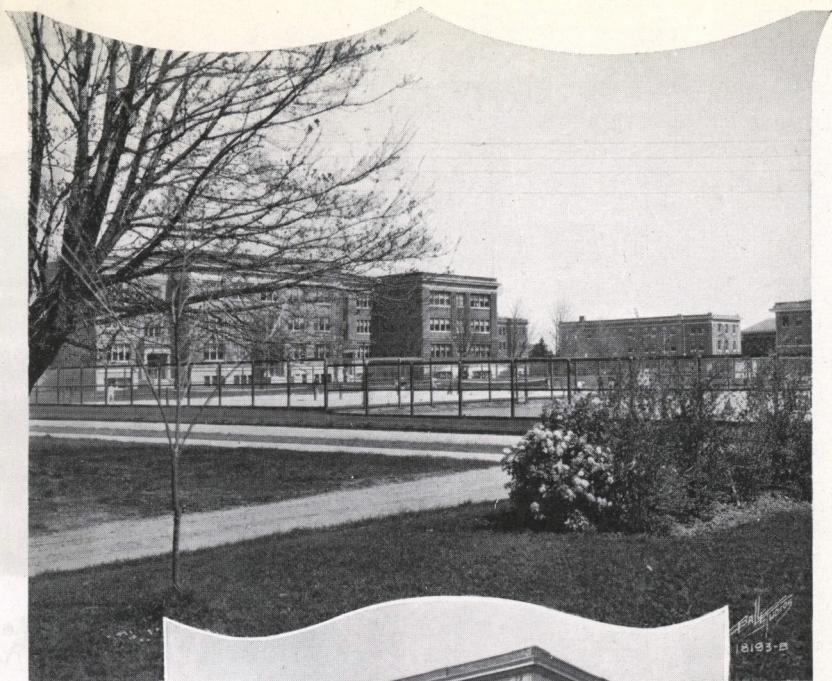
This is the setting of the O. A. C. campus. And what, with its magnificent surroundings; its equable climate where temperatures only rarely fall below freezing in the winter season or rise above ninety degrees Fahrenheit in the midst of summer; where thunder storms are a harmless novelty, and the rains are never alarming—all life is alert and youthful, and College life is particularly abounding. No wonder that the students love their campus, and enjoy showing it to their friends.



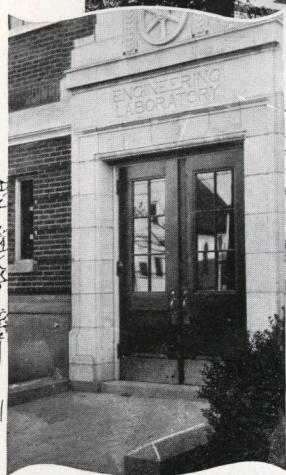
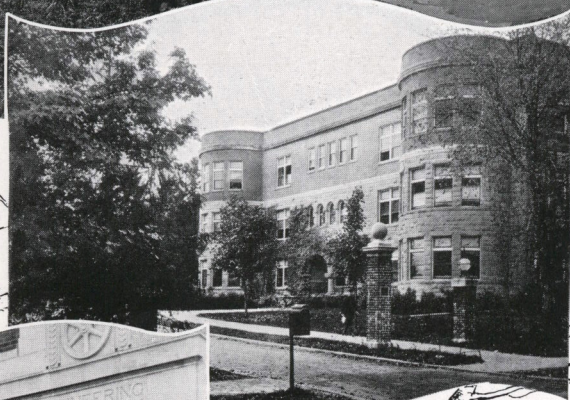
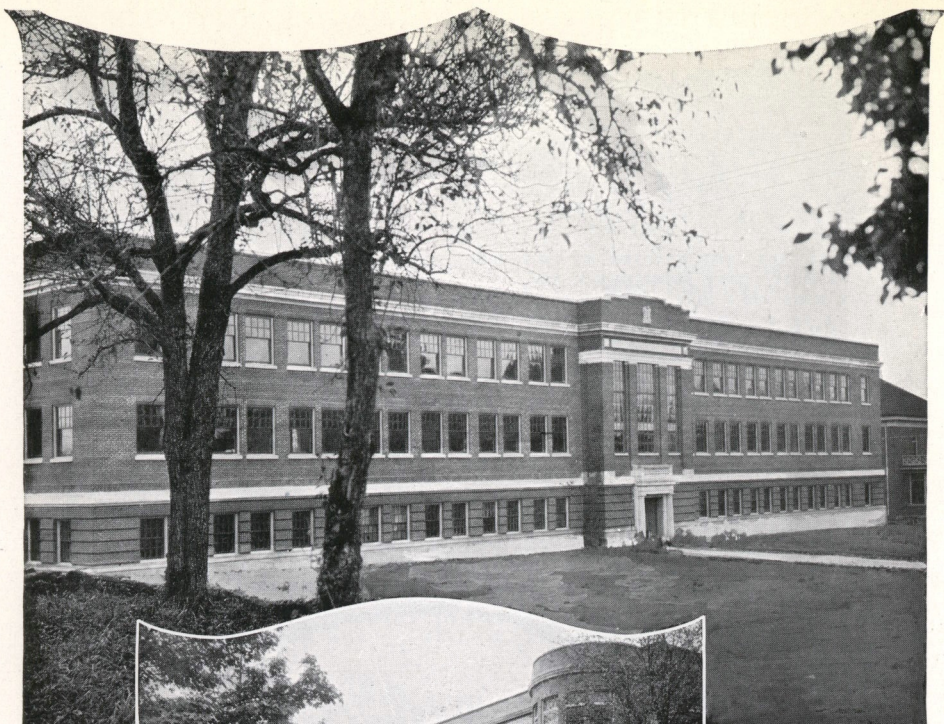
*A sunset view from Administration Hall looking past the Library. A summer vista on the East Quadrangle. Sunshine and shadow along the walks and lawns at Commencement time.*



Views showing the location of the new Hall of Commerce. The first view, from the north entrance to the Library, shows the Hall of Commerce at the right, fronting the north end of the Dairy Building, with Snell Hall in the remote background. The second shows its relation to the East Quadrangle, and the third, looking past the south entrance to Snell Hall, shows the Hall of Commerce in the distance.

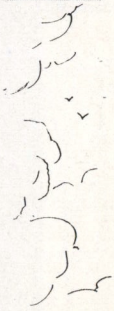
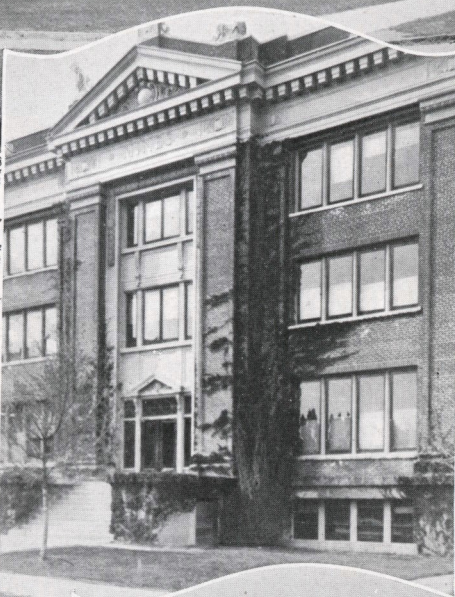
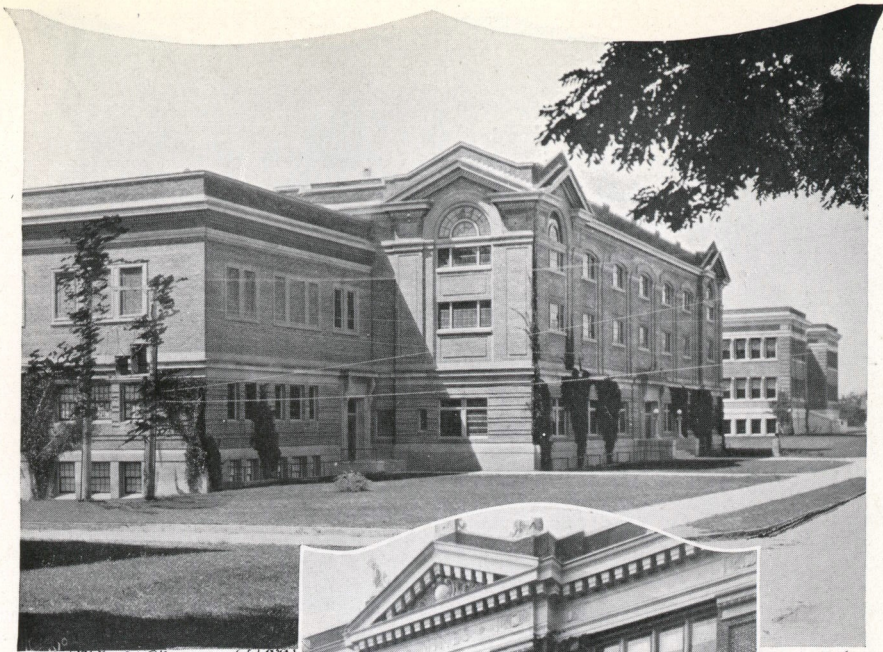


Glimpses of the West Quadrangle, showing the south side of the Home Economics Building in early spring from Cauthorn Hall, the northeast section of the Home Economics Building from the Hall of Commerce, and a detail of one of the south entrances to this building.

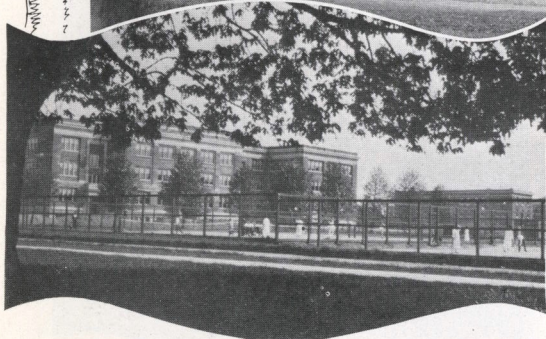
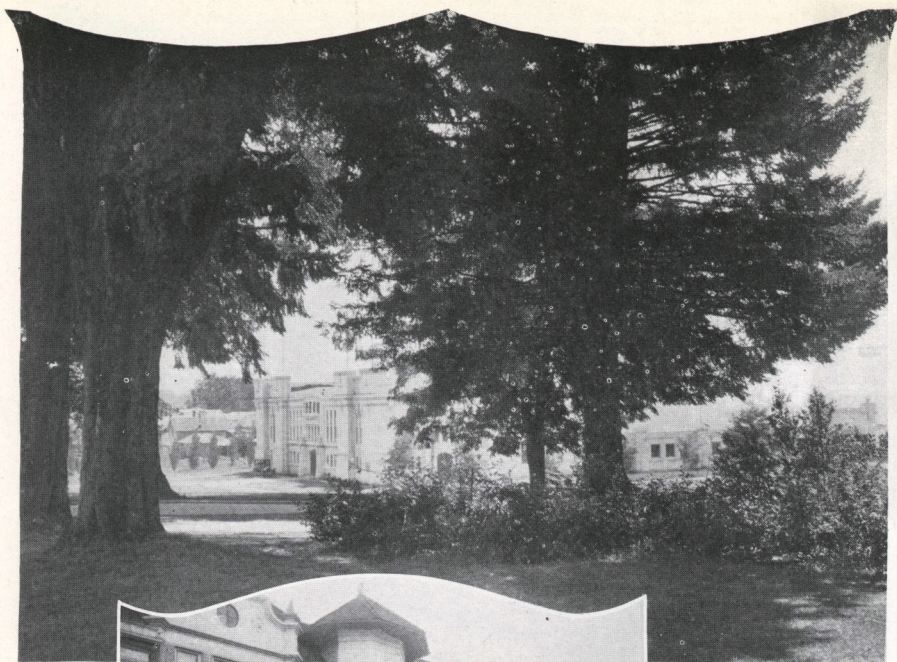


A group of the engineering buildings. The new Engineering Laboratory at the top embodies the most approved and modern equipment for all phases of engineering. Apperson Hall, recently rebuilt and remodeled, houses civil and electrical engineering principally. The Monroe Street entrance to the Engineering Laboratory gives a glimpse of the north side of this imposing structure.

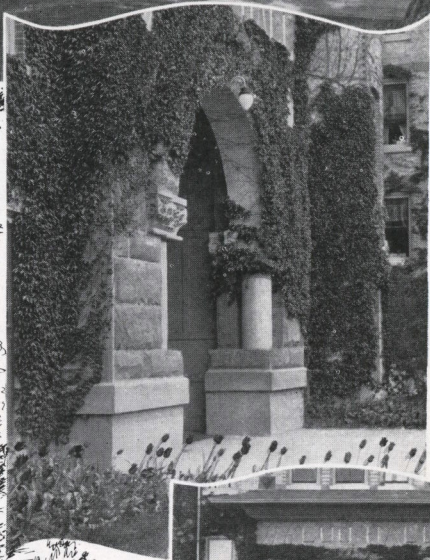




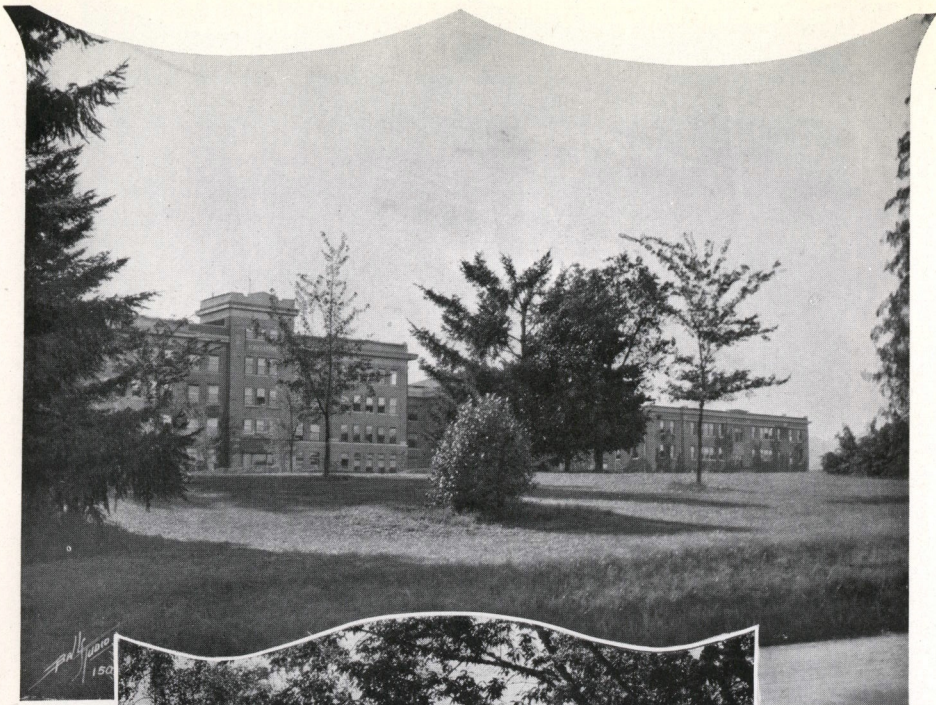
*The Men's Gymnasium from the northeast, showing Forestry in the background. The south front of the Mines Building. The Library, looking past the band stand to the Mines Building and the New Engineering Laboratory.*



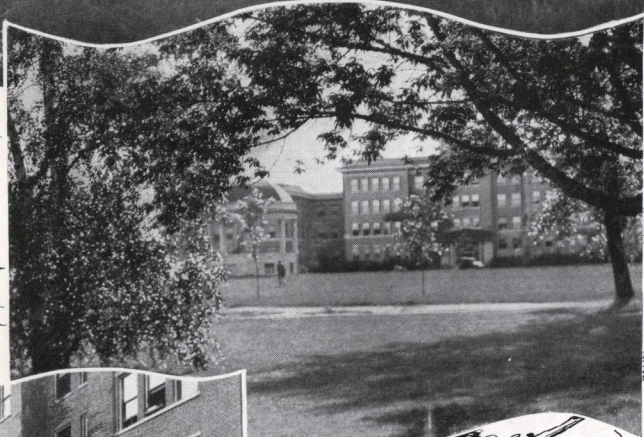
*The Armory from Waldo Hall, where great firs and locusts crown the knoll. The entrance to Waldo Hall, showing part of the circle where flowers bloom practically the year 'round. The tennis courts in the West Quadrangle, looking from Cauthorn Hall toward the Home Economics and Dairy buildings.*



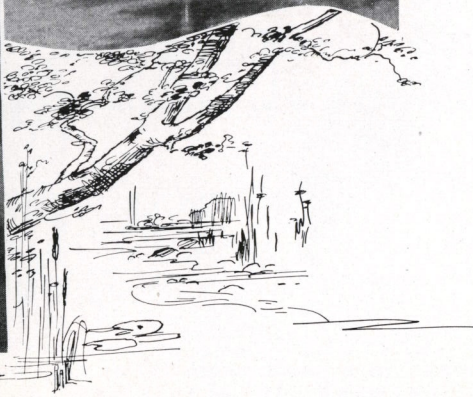
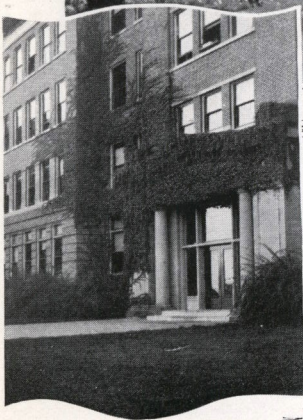
*Views of Waldo Hall, one of the three campus halls of residence for women, showing the giant firs, the ivy-covered portal, and the circular tulip bed. This hall, the earliest to be occupied by women, has many interesting traditions, including a beautiful memorial fireplace.*



July 2  
1900



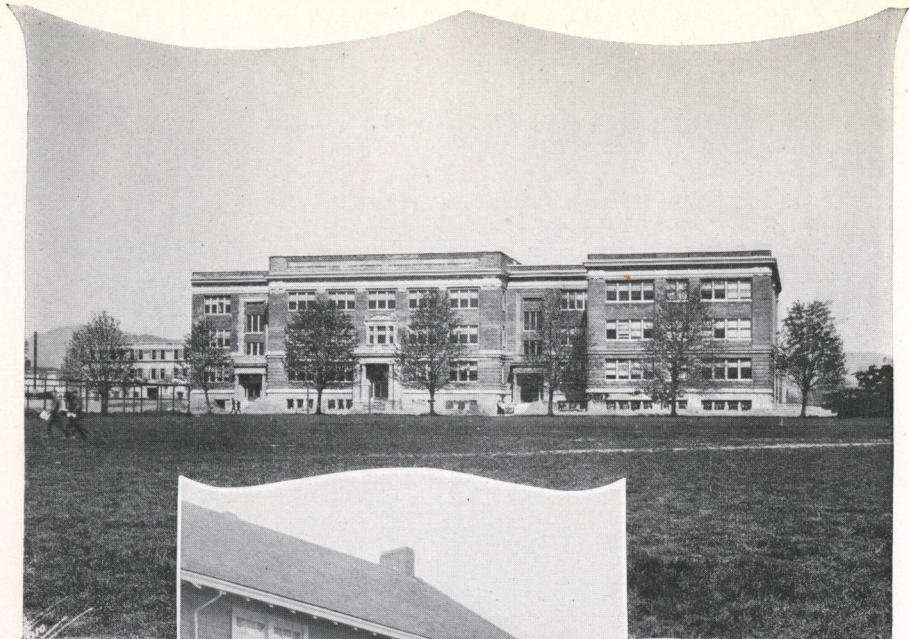
July 2  
1900



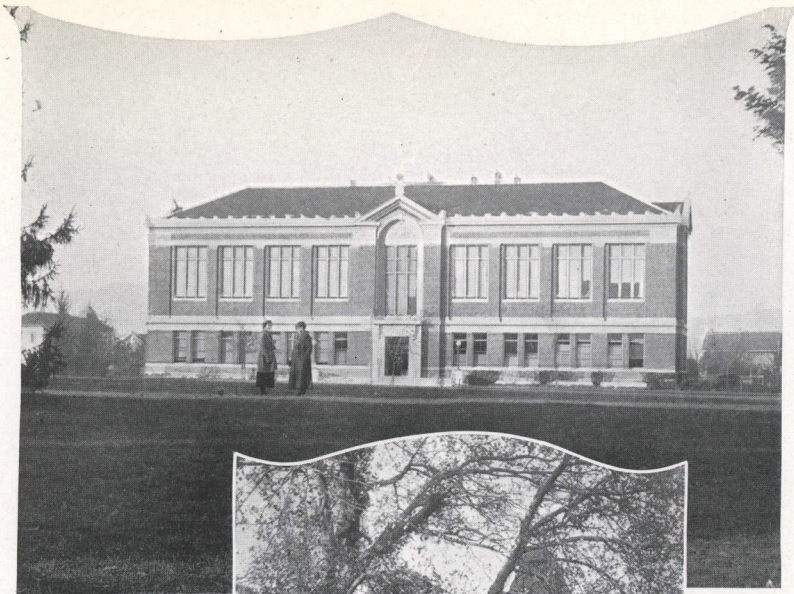
Glimpses of the Agricultural group of buildings—looking northwest from the Women's Gymnasium, looking southwest from Administration Hall, and a close-up view of the ivy-covered entrance.



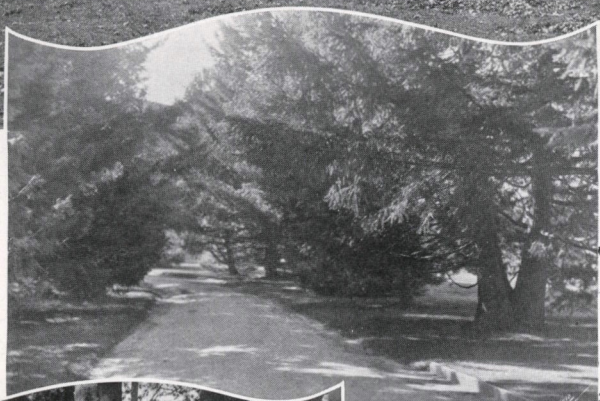
*The Agricultural group of buildings representing the axis of the Campus, between the East and West quadrangles. The East face of the Dairy Building, showing the abundant growth of ivy and plantings. The entrance to the Farm Mechanics Building.*



*The Home Economics Building from the Men's Gymnasium, showing the south front of Snell Hall. The Practice House on Monroe Street. The South entrance to Snell Hall, the new Women's Hall of Residence.*

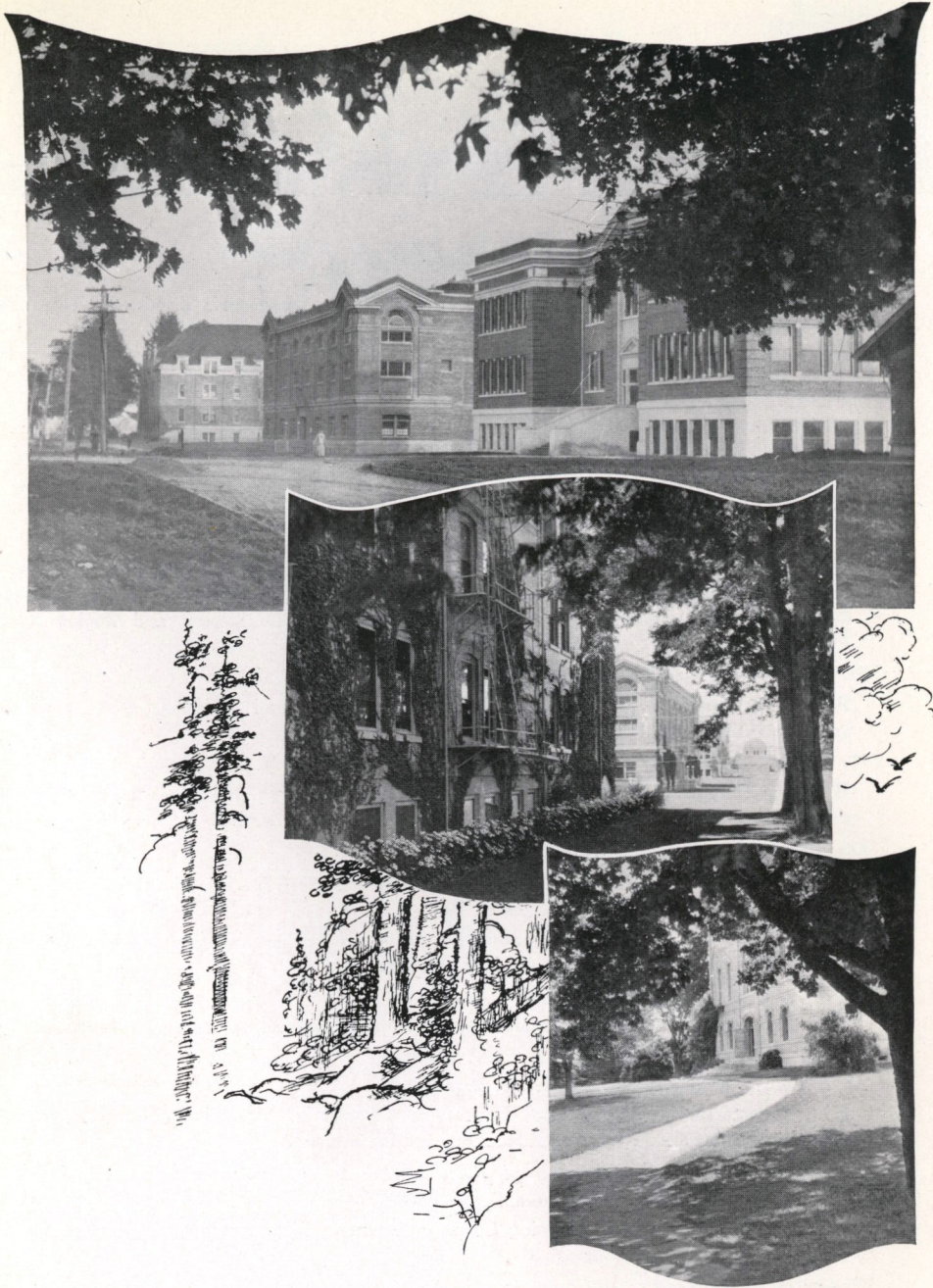


*The College Library from directly in front. The Trysting Tree and Administration Building in Autumn. The north entrance to the Library, looking East.*



*Mary's Peak from the Golf Links in early spring, showing a typical landscape. Administration Driveway on the campus, an evergreen vista of perennial charm. Class Memorial Grove near the Women's Gymnasium, with the Band Stand in the distance, another class memorial.*





The Jefferson Street group of buildings, which forms the south side of the West Quadrangle. Forestry in the foreground is a new and thoroughly modern building. The Men's Gymnasium, even more recent, with its magnificent main floor, its spacious game rooms, its beautiful plumbing facilities, and its huge swimming pool, is one of the finest gymnasiums in the country. Waldo Hall is shown in both the top and second pictures. The lower view shows the lawns leading to the north entrance of Administration Building.



## Oregon Agricultural College

The work of the Oregon Agricultural College is organized into three main divisions: RESIDENT INSTRUCTION, EXPERIMENT STATION, and EXTENSION SERVICE.

*THE RESIDENT INSTRUCTION DIVISION includes:*

*The School of Agriculture (B.Sc., M.S. Degrees)*

With departments of Animal Husbandry, Dairy Husbandry, Farm Crops, Farm Management, Farm Mechanics, Horticulture (including Pomology, Vegetable Gardening, Landscape Gardening, Floriculture, and Horticultural Products), Poultry Husbandry, Soils, and Veterinary Medicine.

*The School of Basic Arts and Sciences*

With departments of Art and Rural Architecture, Bacteriology, Botany and Plant Pathology, Chemistry, English Language and Literature, Entomology, History, Mathematics, Modern Languages, Physics, Public Speaking and Dramatics, and Zoology and Physiology.

*The School of Commerce (B.Sc. Degree)*

With departments of Business Administration, Economics and Sociology, Office Training and Stenography, and Political Science.

*The School of Engineering and Mechanic Arts (B.Sc., C.E., E.E., M.E. Degrees)*

With departments of Civil Engineering, Electrical Engineering, Highway Engineering, Industrial Arts, Mechanics and Materials, and Mechanical Engineering.

*The School of Forestry (B.Sc., M.S. Degrees)*

With departments of General Forestry and Logging Engineering.

*The School of Home Economics (B.Sc., M.S. Degrees)*

With departments of Home Economics Education, Household Administration, Household Art, Household Science, and Institutional Management.

*The School of Mines (B.Sc. Degree)*

With departments of Geology, Metallurgy, and Mining Engineering.

*The School of Pharmacy (B.Sc., Ph.C., Ph.G. Degrees)*

*The School of Vocational Education (B.Sc. Degree)*

With departments of Agricultural Education, Commercial Education, Education, Home Economics Education, Industrial Education, and Psychology.

*The Department of Chemical Engineering (B.Sc. Degree)*

*The Department of Military Science and Tactics (B.Sc. Degree)*

Including Reserve Officers' Training Corps in Infantry, Field Artillery, Engineers, Motor Transport, and Cavalry.

*The General Departments*

Industrial Journalism, Library Practice, Physical Education for Men, and Physical Education for Women.

*The School of Music (Music Diploma)*

With departments of Harmony, Theory, Voice, Piano, Violin, Pipe-organ, and Orchestra.

*The Short Sessions*

Including the Summer Session and Winter Short Courses.





BULLETIN  
ISSUED MONTHLY  
No. 371 JUNE, 1922

---

ENTERED AS SECOND-CLASS MATTER  
MAY 9, 1916, AT THE POSTOFFICE  
AT CORVALLIS, OREGON, UNDER  
THE ACT OF AUGUST 24, 1912