

GV958

07

07

OREGON STATE UNIVERSITY

GV958

07

07

1962

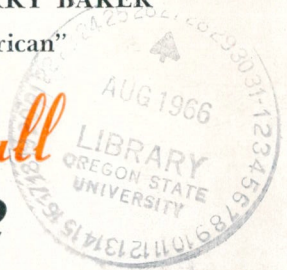


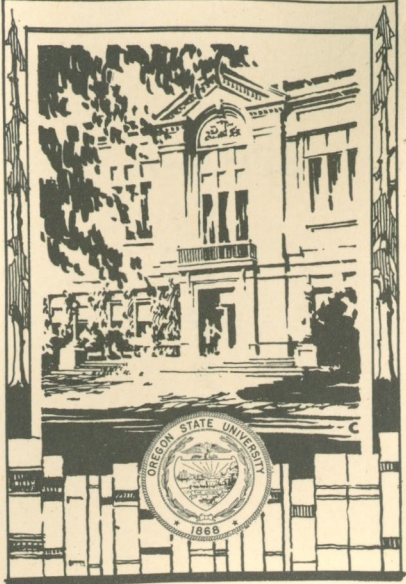
QUARTERBACK TERRY BAKER

"A Real All-American"

Football

1962





GV958
07
07
1962

CONTENTS

OSU history, Administration, Staff	2- 4
Guest facilities, travel service	5
Jensen biography, weather facts, other facts on OSU	6- 8
Ticket info, Where Beavers Stay, telephone list, Eggers itinerary	9-10
Athletic staff biographies, Football followers	11-12
Future OSU Schedules, East-West selections, All-Americans	13-14
Dancing Rally Girls, MVP players, largest crowds, best season attendance	15-16
Facts on old PCC, highest and lowest OSU scores, best years	17-18
Record against Big 10, best PCC years, Rook schedule	19
Intersectional record, PCC titles won	20
OSU attendance through the years	21-22
Through The Years, OSU football captains	23-24
Beavers in pro ball, OSU men in coaching field	25-27
OSU individual leaders, individual and team records	28-35
Largest athletic crowds in state, all-opponents 1961	35
Coaches biographies	36-38
Varsity roster	39-40
1961 OSU statistics	41-42
Thumbnails	43-44
3-Deeps, pronunciation guide, lettermen list, honors won in '61	45-46
Special Terry Baker page	47
The Opponents	48-53
All-time OSU scores, year by year since 1893	54-59
OSU radio network	60



John H. Eggers,
Sports Publicity Director,
Coliseum 107, Corvallis, Ore.
Phone PLaza 2-4211, Ext. 430

Oregon State University

Oregon State University, the oldest, largest and finest institution of higher learning in the state of Oregon, was established as a land-grant school on October 27, 1868, under the provisions of the Morrill Land Grant Act. It was the state's first venture in the field of higher learning and was originally named Corvallis College.

The state wanted to establish a college as early as 1851, and had selected Corvallis, then known as Marysville, as the site. The legislature then reversed itself and decided to construct the college in Jacksonville in southern Oregon.

However, the people of Corvallis went ahead and erected an academy in 1858, operated by the Methodist church. With the adoption of the Morrill act the state took over partial control, and assumed full control in 1885. In 1868 the name was changed to the State Agricultural College of Oregon, later to Oregon Agricultural College, and in 1953 was changed to Oregon State College, although popular acclaim had brought about that name as early as 1927. Just recently it was changed by the state legislature to Oregon State University.

The university campus proper, as well as adjoining agricultural lands, consists of about 4,000 acres, with increases being made yearly as the institution grows in population and need. In addition to the campus area, the Agricultural Experiment station at the university administers and utilizes approximately 24,000 acres, mostly county and federally owned.

The school of forestry owns and administers another 13,300 acres in the Peavy arboretum and the McDonald and other forested areas near Corvallis. These lands are used to teach forestry students actual forest practices through on-the-job training, as well as the research projects for the state and national forest services and the many timber companies located throughout the Northwest.

In addition to the schools of agriculture and forestry, degrees also are given in Humanities and Social Science, Business and Technology, Education, Engineering, Industrial Arts, Home Economics, Pharmacy, Agriculture, Science and the Graduate school. A student indeed has a wide choice of curriculum at OSU, with allied subjects in all fields.

Oregon State University is located in the picturesque city of Corvallis, named for its location in the heart of the Willamette valley of western Oregon. Most recent population (1962) of Corvallis was 24,471, making it Oregon's 5th largest city. Metropolitan Portland is only 80 miles to the north and the Pacific ocean 60 miles west. Corvallis lies in between the Cascade and Coast ranges; with agriculture and lumber forming the chief industries.

Approximately 9,500 students are enrolled for the 1962-63 school year, with an enrollment of 10,000 predicted soon. The university is in the midst of a vast building program with many new dormitories and other structures spread throughout the beautiful campus.

Some of the better-known buildings include the Memorial Union (student union), Benton Hall, the Coliseum, and Agriculture hall, although newer structures such as Cordley Hall are just as eye-catching. Parker stadium, built in 1953 for football, seats 28,000 fans. Dr. James H. Jensen is the president of OSU, while R. S. Keene has been the athletic director since 1947.

The Administration

President: Dr. James H. Jensen (Nebraska)
Dean of Administration: Milosh Popovich (OSU)
Dean of Men: Dan Poling (OSU)
Faculty Athletic Representative: Glenn Holcomb (Michigan)
Registrar: Wallace E. (Bud) Gibbs (OSU)

Facts on OSU

Town: Corvallis (Population 24,471)
Enrollment: 9,500
When Established: 1868, as land-grant institution
School Colors: Orange and Black
Nickname: Beavers, Orangemen
Gym—Coliseum (capacity 11,000)
Football—Parker Stadium (capacity 28,000)
Baseball—Coleman Field (capacity 4,000)
Track—Bell Field (capacity 5,000)
Golf—Corvallis Country Club
Tennis—OSU Courts

The Staff

Athletic Director: R. S. "Spec" Keene
Athletic Business Manager: Jim Barratt
Athletic Ticket Manager: Comm Henness
Football Coach: Tommy Prothro
Senior Assistant: Bob Watson
Line Coach: Bob Zelinka
Asst. Coach: Ron Siegrist
Asst. Coach: Bob Gambold
Asst. Coach: Jerry Long
Asst. Coach: Bob McKittrick
Administrative Assistant: Esther Guerber
Department Secretaries: Betty Jorgensen
Kim Boone
Nell Hart
Trainer: Bill Robertson
Team Physicians: Dr. Waldo Ball, Dr. Verne Gearey
Equipment Manager: Don Shelley
Band Director: Ted Mesang
Publicity Director: John H. Eggers

STAFF



DR. JAMES H. JENSEN
President of OSU



SPEC KEENE
Athletic Director



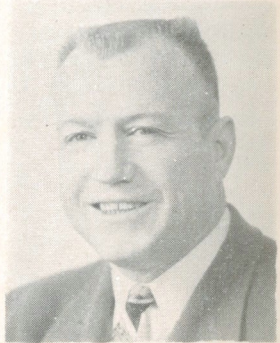
COMM HENNESS
Athletic Ticket Manager



JIM BARRATT
Business Manager



GLENN HOLCOMB
Faculty Athletic Representative



BILL ROBERTSON
Trainer

Corvallis Guest Facilities

MOTOR COURTS

City Center Motel 4th and Jefferson Streets	PLaza 3-7389 30 Units
Country Kitchen Motel 800 North 9th Street	PLaza 3-6054 20 Units
Towne House Motel 350 South 4th Street	PLaza 3-4496 32 Units
Don-Mar Motel 840 North 9th Street	PLaza 2-1016 10 Units
Model Motel 1120 South 3rd Street	PLaza 2-9247 7 Units
Patio Motel 816 South 4th Street	PLaza 3-3361 20 Units
Riverview Motel 605 North 2nd Street	PLaza 3-6800 11 Units
Towne House Motor Inn 4th and Adams Sts.	PLaza 3-4496 32 Units

HOTELS

Benton Hotel 4th and Monroe Streets	PLaza 3-4411 104 Rooms
Corvallis Hotel 2nd and Madison Streets	PLaza 3-7349 60 Rooms
New Julian Hotel 105 South 2nd Street	PLaza 3-3316 92 Rooms

Travel Service

Car Rentals Hertz, 4th & Harrison Avis, 114 North 3rd	PLaza 2-1555 PLaza 3-3865
AAA Service Ben's Flying A, 3rd & Van Buren	PLaza 2-1174
Travel Bureau Globe Travel Service, 5th & Madison	PLaza 2-2439
Airlines and Charter Service West Coast Airlines, Corvallis Airport	PLaza 3-4232
Bus Lines Greyhound, 4th & Jackson	PLaza 3-5181
Airport Corvallis Municipal, 4 miles South on 99	PLaza 3-4232
Taxi Service Corvallis Taxi, 213 North 4th	PLaza 3-4431

OSU Athletic Directors

1915-1919	Dr. E. J. Stewart
1919-1921	James J. Richardson
1921-1923	R. B. Rutherford
1923-1937	Carl A. Lodell
1937-1947	Percy B. Locey
1947-	Roy S. Keene

MEET THE PRESIDENT

Oregon State University's able and energetic leader, Dr. James H. Jensen, will be starting his second year as president this fall when OSU begins its 95th school year.

An internationally-known botanist and plant pathologist, President Jensen was provost, or executive vice president of Iowa State University, for eight years before coming to OSU. He already has stamped himself as an efficient administrator deeply concerned about high-quality education for the increasing numbers of students.

In his first year as president, Dr. Jensen saw enrollments shoot past the old-time high of 7,981 to 9,039.

President Jensen, 56, brought to Oregon State a broad background of experience in university teaching, research and administration, private foundation research, federal government work, and foreign assignments.

He earlier was on the staff of Nebraska and North Carolina State as well as Iowa State; has worked with the Atomic Energy Commission, Boyce Thompson Institute for Plant Research, Rockefeller Institute for Medical Research and the U.S. Department of Agriculture; and completed special scientific assignments in Cuba, Puerto Rico, and the Dominican Republic.

In 1955, Dr. Jensen was national president of the American Phytopathological Society. He is a graduate of University of Nebraska and University of Wisconsin and also did advanced study at Columbia University.

Mrs. Jensen, a native Nebraskan too, is active in student, faculty and community affairs. The Jensens have four children.

Weather Facts About Corvallis

Average yearly rainfall—37.94 inches

Average yearly snowfall—7.53 inches

Average temperature—52.89 degrees

Average maximum temperature—63.39 degrees

Average minimum temperature—42.34 degrees

Warmest month—July (81.31 degrees ave.)

Hottest day ever—107 degrees on July 20, 1946

Coldest day ever—14 below zero in 1919

Wettest year—1937, with 64.12 inches

Driest year—1944, with 22.99 inches

Greatest snowfall—51.9 inches in January, 1950.

OSU'S ENROLLMENT GROWTH

1961-62—	9039	1936-37—	3785
1960-61—	7899	1935-36—	3142
1959-60—	7720	1934-35—	5277
1958-59—	7981	1933-34—	1960
1957-58—	7676	1932-33—	2277
1955-57—	6791	1931-32—	3060
1955-56—	6160	1930-31—	3347
1954-55—	5241	1929-30—	3430
1953-54—	4868	1928-29—	3490
1952-53—	4912	1927-28—	3441
1951-52—	5002	1926-27—	3428
1950-51—	5887	1925-26—	3229
1949-50—	6793	1924-25—	3061
1948-49—	7428	1923-24—	2893
1947-48—	7498	1922-23—	3077
1949-47—	7133	1921-22—	3400
1945-46—	3126	1920-21—	3077
1944-45—	2009	1919-20—	2919
1943-44—	1983	1918-91—	2874
1942-43—	4035	1917-18—	1421
1941-62—	4359	1916-17—	1635
1940-41—	4759	1915-16—	1530
1939-40—	4619	1914-15—	1525
1938-39—	4406	1913-14—	1468
1937-38—	4075	1912-13—	1628

OSU STUDENT DISTRIBUTION

BY SCHOOLS

(These figures show enrollment for the last fall quarter in the various schools at Oregon State University and were compiled by Registrar W. E. Gibbs).

Agriculture	730
Business and Technology	1177
Education	1319
Engineering	1548
Forestry	424
Home Economics	564
Humanities and Social Science	972
Pharmacy	406
Science	1837
Grand Total	9039 students

OREGON FOREST FACTS

The State of Oregon ranks No. 1 in the United States in standing timber and production of lumber, plywood and particle board. It has over 21 per cent of the nation's commercial timber volume. It produces 22 per cent of the nation's lumber and 55 per cent of its plywood.

Almost half of Oregon's 62 million acres are in forests (30 million acres). Of these, 26 million acres are classified as commercial forest land. The federal government controls about 15 million acres of the commercial forest land, the state and counties about 1 million acres and 10 million acres are held by some 36,000 private owners. The gross state forest product is valued in excess of \$1.3 billion per year.

The forest industry employs about 75,000 full time workers each year. In 1961, they earned about \$400 million. In addition, several thousand non-manufacturing workers derive their income directly or indirectly from the forest resources. Overall forests account for almost 60 per cent of Oregon's economy.

In Benton County, where Oregon State University is located, 35 per cent of the total number of industrial persons employed derive their living from wood products. In Benton County, nearly 30 per cent of all income comes from forestry.

Oregon, indeed, is the "land of the tall timber."

OSU FARTHEST WEST

Oregon State University is located at the westernmost part of the United States of all major universities, it was learned recently.

These three schools rank 1-2-3 as "most western" in the nation:

1. Oregon State University, Corvallis, Ore.—123° 16min.
2. University of Oregon, Eugene, Ore.—123° 05 min.
3. University of Washington, Seattle, Wash.—120° 20 min.

TICKET INFORMATION

HOME GAMES

Sept. 22 Iowa State at Portland	8 p.m. (DST) —\$4.00
Oct. 13 Washington at Portland	1:30 p.m.—\$4.00
Oct. 20 Univ. of Pacific at Corvallis (Kiwanis Kids Day)	1:30 p.m.—\$4.00
Oct. 27 West Virginia at Portland	1:30 p.m.—\$4.00
Nov. 17 Colorado State at Corvallis (Homecoming)	1:30 p.m.—\$4.00
Nov. 24 Oregon at Corvallis	1:30 p.m.—\$5.00

AWAY GAMES

Sept. 29 Iowa at Iowa City	\$5.00
Oct. 6 Stanford at Palo Alto	\$4.00
Nov. 3 Washington State at Pullman	\$4.00
Nov. 10 Idaho at Moscow	\$3.50
Season Ticket "A"—3 games (Portland)	\$12.00
Season Ticket "B"—3 games (Corvallis)	\$13.00
Season ticket all games (6)	\$25.00

FURTHER INFORMATION

Call Plaza 3-7501
or write
Ticket Manager, OSU
Coliseum, 103
Corvallis, Oregon

SEASON TICKETS ARE YOUR BEST FOOTBALL BUY

Convenient Beaver Ticket Agencies

J. K. Gill's, Portland
Stevens & Sons, (Lloyd Center), Portland
MAC, Portland
Phil Small's Downtown, Corvallis
Wagner's, Corvallis
Elk's Lodge, Corvallis
Reeve's Clothing, Lebanon
Bill Beard Sporting Goods, Salem
The Club, Longview
Mattox Pipe Shop, Eugene
J. C. Sporting Goods, Roseburg
Vince Barrett Sports Shop, Albany
Steinbock Pharmacy, Astoria
Jack & Jill Shop, Oregon City
Barker's, Medford
Coos Bay Stationery, Coos Bay
Taylor's Drug, Independence

WHERE THE BEAVERS STAY

Iowa, Sept. 29—Sheraton-Montrose Hotel, Cedar Rapids, Iowa
(Friday night)
Stanford, Oct. 6—Rickey's Hyatt House, Palo Alto, Cal.
(Friday night)
Washington State, Nov. 3—Desert Caravan Inn, Spokane, Wash.
(Friday night)
Idaho, Nov. 10—Desert Caravan Inn, Spokane, Wash.
(Friday night)

Home Telephone List

(Regular department of athletics office number is PLaza 3-7501, although department also has college number of PLaza 2-4211, Extension 254. Athletic News Bureau office number is PLaza 2-4211, Extension 430. All home numbers of staff members listed below.)

- R. S. "Spec" Keene, Director of Athletics—PLaza 3-3617.
Jim Barratt, Athletic Business Manager—PLaza 3-3491.
John Eggers, Sports Publicity Director—PLaza 3-6178.
Comm Henness, Ticket Manager—PLaza 2-2938.
Tommy Prothro, Head Football Coach—PLaza 2-1579.
Bob Watson, Senior Asst. Football Coach—PLaza 2-1542
Bob Zelinka, Line Football Coach—PLaza 3-8377
Ron Siegrist, Assistant Football Coach—PLaza 2-3484
Bob Gambold, Assistant Football Coach—PLaza 2-2231
Jerry Long, Assistant Football Coach—PLaza 3-3812
Bob McKittrick, Assistant Football Coach—PLaza 3-6298
Don Shelley, Equipment Manager—PLaza 2-1171
Bill Robertson, Athletic Trainer—PLaza 3-4108.
Esther Guerber, Department Bookkeeper—PLaza 3-4715.
Slats Gill, Head Basketball Coach—PLaza 3-6781.
Paul Valenti, Assistant Basketball Coach—PLaza 3-3731.
Ralph Coleman, Head Baseball Coach—PLaza 3-3630.
Sam Bell, Track Coach—PLaza 2-3380.
Jim Barratt, Head Golf Coach—PLaza 3-3491
Irwin Harris, Head Tennis Coach—PLaza 3-5027.
Dale Thomas, Head Wrestling Coach—PLaza 2-1759.
Dr. Waldo Ball, Team Physician—PLaza 3-3464.
Dr. Verne Gearey, Team Physician—PLaza 3-5914.
Glenn Holcomb, Faculty Representative—PLaza 3-8265.

Publicity's Man's Itinerary

- Sept. 1 to Sept. 16—Coliseum 107, Corvallis, Ore.
Sept. 17 to Sept. 22—Congress Hotel, Portland, Ore.
Sept. 23-24-25—Ft. Des Moines Hotel, Des Moines, Iowa
Sept. 26—Blackhawk Hotel, Davenport, Iowa
Sept. 27-28-29—Montrose-Sheraton Hotel, Cedar Rapids, Iowa
Sept. 30—Coliseum 107, Corvallis, Ore.
Oct. 1-4—Sir Francis Drake Hotel, San Francisco
Oct. 5-6—Rickey's Hyatt House, Palo Alto
Oct. 7—Coliseum 107, Corvallis, Ore.
Oct. 8-13—Congress Hotel, Portland, Ore.
Oct. 14-21—Coliseum 107, Corvallis, Ore.
Oct. 28-29—Coliseum 107, Corvallis, Ore.
Oct. 22-27—Congress Hotel, Portland, Ore.
Oct. 30-Nov. 3—Ridpath Hotel, Spokane, Wash.
Nov. 4-6—Coliseum 107, Corvallis, Ore.
Nov. 7-9—Ridpath Hotel, Spokane, Wash.
Nov. 11-Nov. 24—Coliseum 107, Corvallis

ATHLETIC STAFF

ROY S. KEENE
Athletic Director

It takes a man well-versed in sports, full of enthusiasm and stocked with background to successfully administrate an athletic department in this fast-stepping modern era of sports.

Such a man is Roy S. "Spec" Keene, athletic director at Oregon State since 1947.

Keene possibly knows more people and has more friends than anybody connected with athletics at OSU. And he has demonstrated administrative sharpness by developing Oregon State's vast athletic program into one of the finest in the nation.

"Spec" of course, is an Oregon Stater from the word go. He was student body president here in 1921, started on the baseball team and was an assistant coach at OSU before he moved on to Willamette University in Salem. At Willamette, his teams were the scourge of the Northwest conference, winning one championship after another.

His loyalty to school, and nation, could never be questioned. Keene was an army lieutenant in World War I and a naval lieutenant-commander in World War II, and served his country well in both cases. Even so, he never lost interest in athletics.

"Spec" became athletic director at OSU in 1947 when the Beavers were experiencing a natural expansion trend in athletics. One important problem was lack of facilities to carry on a program that would rate high nationally. Under his direction and planning, spacious OSU Coliseum was constructed, giving this school one of the finest to be found anywhere. The building opened in December of 1949 and has attracted thousands of people since.

Football needed something better than ancient Bell field, too, and there again Keene recognized the problem. Even better, he did something about it, and spearheaded a drive to obtain a new stadium with seating for 28,000. With contributions from boosters, alums and friends, Oregon State was able to open picturesque Parker stadium in 1953 at no debt to the taxpayers. The plant was paid for when it was built.

Keene, meanwhile, became a key figure nationally in athletics, being on the executive committee of the NCAA, and also chairman of the selection committee for the Western Regional NCAA basketball tournament. In addition, he was a past president of the Pacific Coast conference athletic directors association.

JIM BARRATT, athletic business manager and Keene's top aide, year in and year out tackles one of the toughest assignments of all—making people happy. He's overseer of all ticket sales and various other promotions connected with the athletic program. His unbounding enthusiasm and attention to details helps establish Jim as one of the top men in his field. He wears a broad smile at all times and is a firm believer in strong public relations. Barratt originally is from Heppner where he was a high school star in football, basketball, tennis and track, winning 10 varsity awards. Jim served in the navy in World War II, and graduated from OSU in 1950. He was editor of the Daily Barometer, official school publication at OSU, his senior year and a member of virtually every honor organization on campus. Jim first became assistant alumni director in 1950, moving to the athletic department at the close of the 1951 football season. He still keeps a hand in the coaching line, however, as golf coach.

BILL ROBERTSON, trainer, has been chief of the OSU tape brigade for 16 years, and long has been one of the most popular citizens in the Corvallis community. Famous for his always well-received vocal rendition of "Casey At The Bat" and dozens of other recitations, Bill is much in demand at banquets and social gatherings. The athletes call him "Rope-sole," and his reputation as an athletic trainer ranks right near the top of that field. Robertson originally is from Vancouver, B.C., but became an American citizen many years ago and has lived in the Pacific Northwest ever since. He served in the army in World War II, and saw duty in both Italy and the Aleutians. Bill is a graduate of OSU.

JOHN EGGERS, sports publicity director, recently observed his 12th anniversary on the athletic staff at OSU. He joined the staff on July 1, 1950, as an assistant to director Irwin Harris, and was moved up to the top spot on July 1, 1952. Eggers was born and raised in Pendleton, the "Round-Up City" of eastern Oregon. He was an all-state basketball player at Pendleton high, a prep teammate of Lew Beck who later went on to win all-America fame at OSU and play in the Olympic Games. Eggers played one varsity basketball season at Willamette while only a freshman before enlisting in the Navy for World War II. After discharge, he attended OSU from the fall of 1946 through 1949. Before returning to the OSU staff, he worked for one year as a sports writer on The Oregonian in Portland.

COMM HENNESSY, athletic ticket manager, is one of the newest members of the OSU athletic department. He joined the staff on February 1, 1961, after serving nine years with the physical plant at Oregon State. The last three years were spent as an accountant for that department. Hennessy was born in Fontana, Kansas, but came west to Oregon in 1946. He has lived in Corvallis most of the time since. Comm is an extremely diligent worker and a top specialist in accounting or bookkeeping duties of any nature. As Jim Barratt's right-hand man, he also handles all ticket sales to free Barratt for more promotional administrative work.

They Cover Beaver Football

L. H. Gregory, Sports Editor, The Oregonian, Portland, Ore.
George Pasero, Sports Editor, The Journal, Portland, Ore.
Don McLeod, Executive Sports Editor, The Oregonian, Portland
John White, Executive Sports Editor, The Journal, Portland
Bob Hulen, Sports Editor, Portland Reporter, Portland, Ore.
Frank Flori, Sports Dept., Portland Reporter, Portland, Ore.
Jack Rickard, Sport Editor, Gazette-Times, Corvallis, Ore.
Bruce Banke, Sports Editor, Democrat-Herald, Albany, Ore.
Al Lightner, Sports Editor, Oregon Statesman, Salem, Ore.
Bob Schwartz, Sports Writer, Oregon Statesman, Salem.
Joe Much, Sports Editor, Capital-Journal, Salem, Ore.
Dick Strite, Sports Editor, Register-Guard, Eugene, Ore.
Bob Blackburn, Free-Lance, Portland, Ore.
Doug Lamear, KGW-TV, Portland.
Bob Hinz, Radio KOAC and KOAC-TV, Corvallis, Ore.
Don Heinen, Radio KFLY, Corvallis, Ore.
Bill Mesler, Radio KLOO, Corvallis, Ore.
Doug Lamear, KGW-TV, Portland, Ore.
Johnny Carpenter, KOIN-TV, Portland, Ore.
Jimmie Jones, KPTV, Portland, Ore.
Bruce King, KEZI-TV, Eugene, Ore.
Sports Director, KVAL-TV, Eugene, Ore.
Tom Morgan, KATU-TV, Portland, Ore.

OSU Future Football Schedule

1962

Sept.	22	Iowa State at Portland
	29	Iowa at Iowa City
Oct.	6	Stanford at Palo Alto
	13	Washington at Portland
	20	University of the Pacific at Corvallis
	27	West Virginia at Portland
Nov.	3	Washington State at Pullman
	10	Idaho at Moscow
	17	Colorado State at Corvallis
	24	Oregon at Corvallis

1963

Sept.	21	Utah at Salt Lake
	28	Colorado at Portland
Oct.	5	Baylor at Portland
	12	Washington at Seattle
	19	Washington State at Corvallis
	26	Syracuse at Syracuse
Nov.	2	Stanford at Corvallis
	9	Indiana at Bloomington
	16	USC at Los Angeles
	23	Oregon at Eugene

1964

Sept.	19	Northwestern at Evanston
	26	Colorado at Boulder
Oct.	3	Baylor at Waco
	10	Washington at Portland
	17	Idaho at Corvallis
	24	Syracuse at Portland
	31	Washington State at Pullman
Nov.	7	Indiana at Portland/Corvallis
	14	Stanford at Stanford
	21	Oregon at Corvallis

1965

Sept.	18	Illinois at Cham-Urbana
	25	Iowa at Portland
Oct.	2	USC at Los Angeles
	9	Northwestern at Evanston
	16	Idaho at Boise or Spokane
	23	Utah at Corvallis
	30	Washington State at Corvallis
Nov.	6	Syracuse at Syracuse
	13	Washington at Seattle
	20	Oregon at Eugene

1966

Sept.	17	Michigan at Ann Arbor
	24	Iowa at Iowa City
Oct.	1	USC at Portland
	8	Northwestern at Portland
	15	Idaho at Corvallis
	22	Arizona State at Tempe
	29	Washington State at Pullman
Nov.	5	Arizona at Corvallis
	12	Washington at Portland
	19	Oregon at Corvallis

East-West Shrine Game Players From Oregon State

(At San Francisco)

Name	Pos.	Year
Percy Locey	Tackle	1926
Carl Gilmore	Back	1930
Russ Stiff	End	1930
Bill McKalip	End	1930
Kenneth Hammer	Center	1932
Harry Field	Tackle	1934
Ade Schwammel	Tackle	1934
Pierre Bowman	Halfback	1934
Elmer Kolberg	Fullback	1938
Joe Gray	Halfback	1938
Joe Wendlick	End	1939
Prescott Hutchins	Guard	1939
Vic Sears	Tackle	1941
Leonard Younce	Guard	1941
Jim Kisselburgh	Fullback	1941
Lloyd Wickett	Tackle	1943
Choc Shelton	Fullback	1944
Quentin Greenough	Center	1944
Boyd Clement	Center	1944, 1947
Bob Stevens	Halfback	1946
Dick Lorenz	End	1947
Martin Chaves	Guard	1947
Ted Ossowski	Tackle	1948
Paul Evensen	Guard	1949
Bill Austin	Tackle	1950
Ken Carpenter	Halfback	1950
Tom DeSylvia	Guard	1950
Dick Gray	Halfback	1952
Jim Clark	Guard	1952
Herman Clark	Tackle	1952
John Thomas	End	1953
Sam Baker	Fullback	1955
Ron Aschbacher	Tackle	1956
Joe Francis	Halfback	1958
Nub Beamer	Fullback	1958
Dave Jesmer	Tackle	1958
Ted Bates	Tackle	1959
Aaron Thomas	End	1960
Hank Rivera	Halfback	1961

All-American Selections

The following players from Oregon State were named to first team all-Americans on one or more teams having national recognition.

Gap Powell, full back	1921
Ade Schwammel, tackle	1933
Red Franklin, halfback	1933
Vic Sears, tackle	1940
Bill Gray, center	1946
John Witte, tackle	1955, 1956
Ted Bates, tackle	1958

Dancing Rally Girls at OSU

1955-56:

Sylvia Kain
Connie Kinser
Kay Shideler
Joan Norman
Sue Gallo
Elaine Captain

1956-57:

Nina Gollesrud
Verl Pilling
Cinda Lee
Cece Broome
Gaylee Briggs
Joan Service

1959-60

Kathi Booth
Ginny Evans
Sally Eldon
Judy Query
Gerī Rose
Janice Phillips

1961-62

Jackie Travis
Pat Huffschmidt
Joan Arnold
Judy Young
Sue Schwabe
Marilyn Arnett

1957-58:

Carol Boesch
Harryette Fromong
Deann McMurray
Shirley Gonsalves
Judy Palmberg
Shirley Jones

1958-59:

Barbie Bell
Irene Dean
Pat Mannagh
Pat Nielson
Jeanne Perrin
Judy White

1960-61

Ginger Boal
Val Rouselle
Nancy Johnson
Mary Laurhammer
Jayne Makino
Kay Parker

1962-63

Karen Cork
Judie Smith
Suzanne Stowe
Pat Phillips
Carol Mortenson
Sue Craig

Male Members:

1962-63

Bob Jacobson
Tom Hazlett
Bill Dupin
Bill Bailey
Denny Palanuk

MOST VALUABLE PLAYERS AT OSU

1961—Terry Baker, QB
1960—Chuck Marshall, FB
1959—Dainard Paulson, HB
1958—Ted Bates, tackle
1957—Joe Francis (HB
1956—Joe Francis, HB
1955—Ron Siegrist, QB
1954—Ron Aschbacher, tackle
1953—Ralph Carr, HB
1952—Sam Baker, FB
1951—Sam Baker, FB
1950—Sam Baker, FB
1949—Dick Gray, HB

OSU's Largest Grid Crowds In History

Opponent	Site	Year	Attendance
Iowa	Rose Bowl	1957	100,000
Michigan	Ann Arbor	1959	74,693
Stanford	Palo Alto	1956	65,000
Southern Cal.	Los Angeles	1947	61,301
UCLA	Los Angeles	1955	57,664
Duke	Durham		
	(Rose Bowl)	1942	55,000
California	Berkeley	1957	50,000
Southern Cal	Los Angeles	1956	53,714
Washington	Seattle	1961	51,500
Michigan State	East Lansing	1953	51,108
Southern Cal	Los Angeles	1948	50,237
California	Berkeley	1957	50,000
Minnesota	Minneapolis	1954	49,000
Washington	Seattle	1959	48,000
UCLA	Los Angeles	1957	46,102
Wisconsin	Madison	1961	45,274
Fordham	New York City	1933	45,000
Southern Cal	Los Angeles	1940	45,000
Southern Cal	Los Angeles	1941	45,000
Stanford	Palo Alto	1940	45,000
California	Berkeley	1951	43,000
Iowa	Iowa City	1960	43,000
California	Berkeley	1959	41,500
Iowa	Iowa City	1956	41,027
Southern Cal	Los Angeles	1958	40,312

Best Season Attendance Marks At Oregon State U.

	Year	Attendance	Games
1.	1957	304,955	10
2.	1959	298,217	10
3.	* 1956	282,955	10
4.	1951	277,071	10
5.	1948	257,999	12
6.	1961	243,301	10
7.	1947	238,913	10
8.	1958	231,371	10
9.	1960	226,652	10
10.	1955	220,912	9
11.	1954	219,432	9
12.	1953	215,127	9
13.	1949	210,563	10
14.	1950	184,499	9
15.	1952	169,194	9
16.	1946	166,105	9

(*Rose Bowl crowd of 100,000 not included)

PCC Standings 1955 through 1958 In Tommy Prothro Era

(These figures are compiled to show how Coach Tommy Prothro of Oregon State dominated play in Pacific Coast conference its final four seasons. Prothro twice finished first, was second once and fourth once in the PCC.)

	W	L	T	Pct.
OREGON STATE	22	8	1	.726
UCLA	18	8	1	.685
Oregon	17	12	2	.581
Southern California	13	13	1	.500
Washington	14	15	2	.484
Stanford	12	14	1	.463
Washington	12	17	1	.417
California	10	17	1	.375
Idaho	0	14	0	.000

PCC STANDINGS, 1937 to 1959

(PCC was dissolved prior to 1959 football season)

	Won	Lost	Tied
USC	87	41	14
UCLA	85	51	9
OREGON STATE	80	66	12
California	76	61	7
Washington	71	75	8
Oregon	68	79	5
WSC	64	76	11
Stanford	61	61	5
Idaho	12	70	2

POST WORLD WAR II 1946 - 1959

	Won	Lost	Tied
UCLA	62	23	2
USC	51	27	4
OREGON STATE	48	46	6
California	48	34	4
Oregon	44	48	4
Stanford	39	43	5
Washington	38	47	4
WSC	38	52	6
Idaho	6	44	1

Highest OSU Scores In Grid History

1. Oregon State 76, Willamette 0 (1931)
2. Oregon State 75, Chemawa Indians 6 (1911)
3. Oregon State 69, Willamette 0 (1915)
4. Oregon State 68, Chemawa Indians 0 (1921)
Oregon State 68, Rooks 7 (1921)
5. Oregon State 67, Multnomah Club 0 (1926)
Oregon State 67, Willamette 0 (1902)
- * 6. Oregon State 66, Idaho 18 (1959)
7. Oregon State 64, Willamette 0 (1914)
- * 8. Oregon State 63, Montana 14 (1949)
9. Oregon State 62, Albany College 0 (1893)
10. Oregon State 62, Whitman 0 (1925)
11. Oregon State 61, Utah 28 (1951)
(*Conference game)

Worst OSU Defeats In Grid History

1. UCLA 61, Oregon State 0 (1954)
2. UCLA 57, Oregon State 0 (1952)
3. UCLA 50, Oregon State 6 (1946)
4. Southern Cal 48, Oregon State 6 (1947)
5. Washington 47, Oregon State 0 (1913)
6. California 46, Oregon State 7 (1954)
7. Minnesota 44, Oregon State 6 (1954)
8. Oregon 44, Oregon State 0 (1895)
9. UCLA 41, Oregon State 0 (1953)
10. California 41, Oregon State 0 (1949)

Best Years For OSU All Games

Year	W	L	T	PF	PA	Coach
1914	7	0	2	172	15	E. J. Stewart
1907	6	0	0	137	0	F. S. Norcross
1897	2	0	0	42	8	Bill Bloss
1939	9	1	1	186	77	Lon Stiner
1946	7	1	1	157	81	Lon Stiner
1926	7	1	0	221	30	Paul Schissler
1902	4	1	1	158	16	Frank Herbold
1893	4	1	0	144	48	Bill Bloss
1906	4	1	2	77	4	F. S. Norcross
1957	8	2	0	203	129	Tommy Prothro
1941	8	2	0	143	49	Lon Stiner
1949	7	3	0	232	188	Kip Taylor
1956	7	3	1	203	166	Tommy Prothro
1955	6	3	0	126	120	Tommy Prothro
1960	6	3	1	197	145	Tommy Prothro

OSU's All-Time Record Against Big Ten Teams

1915 Oregon State 20	Michigan State 0
1942 Oregon State 7	Michigan State 7
1948 Michigan State 46	Oregon State 21
1949 Oregon State 25	Michigan State 20
1950 Michigan State 38	Oregon State 13
1951 Michigan State 6	Oregon State 0
1952 Michigan State 17	Oregon State 14
1953 Michigan State 34	Oregon State 6
1954 Minnesota 44	Oregon State 6
1956 Iowa 14	Oregon State 13
1956 Iowa 35	Oregon State 19
1957 Oregon State 22	Northwestern 13
1959 Michigan 18	Oregon State 7
1960 Iowa 22	Oregon State 12
1960 Oregon State 20	Indiana 6
1961 Wisconsin 23	Oregon State 20

Wins—Big Ten 11, Oregon State 4, one tie

Best Years For OSU In PCC

	Pos.	W	L	T	PF	PA	Coach
1956	1st	6	1	1	152	104	Tommy Prothro
1941	1st	7	2	0	123	33	Lon Stiner
1957	T 1st	6	2	0	147	110	Tommy Prothro
1946	2nd	6	1	1	122	81	Lon Stiner
1955	2nd	5	2	0	86	107	Tommy Prothro
1939	3rd	6	1	1	105	59	Lon Stiner
1940	3rd	4	3	1	102	80	Lon Stiner
1925	T 3rd	4	3	1	53	51	Lon Stiner
1925	T 3rd	3	2	0	77	81	Paul Schissler
1926	T 3rd	4	1	0	102	24	Paul Schissler
1949	4th	5	3	0	180	161	Kip Taylor
1933	4th	2	1	1	25	13	Lon Stiner

FRESHMAN GRID SCHEDULE 1962

October 27 (Sat.) Oregon Frosh at Medford (8 p.m.)

November 3 (Sat.) WSU Frosh at Pullman (a.m.)

November 9 (Fri.) Washington Frosh at Corvallis (1:30 p.m.)

November 16 (Fri.) Oregon Frosh at Eugene (1:30 p.m.)

Intersectional Games of the Past

1903—OSC 15, Nevada 0	1948—OSC 20, Utah 20
1904—OSC 45, Utah Aggies 0	1948—OSC 28, Nebraska 13
1907—OSC 10, St. Vincent College 0	1948—OSC 47, University of Hawaii 27**
1912—OSC 23, Occidental 6	1949—OSC 27, Utah 7
1915—OSC 20, Michigan Aggies 0	1949—OSC 25, Michigan State 20
1915—OSC 0, Syracuse 28	1950—OSC 13, Michigan State 38
1916—OSC 7, Nebraska 17	1951—OSC 0, Michigan State 6
1923—OSC 9, Hawaiian All-Stars 14	1951—OSC 61, Utah 28
1923—OSC 0, University of Hawaii 7	1952—OSC 14, Utah 7
1924—OSC 0, Nebraska 14	1952—OSC 14, Michigan State 17
1926—OSC 29, Marquette 0	1953—OSC 6, Michigan State 34
1927—OSC 14, Carnegie Tech 14	1954—OSC 7, Nebraska 27
1928—OSC 25, New York University 13	1954—OSC 6, Minnesota 44
1929—OSC 14, Detroit U. 7	1956—OSC 19, Missouri 13
1930—OSC 12, West Virginia University 0	1956—OSC 13, Iowa 14
1931—OSC 16, Colorado 0	1957—OSC 19, Iowa 35***
1931—OSC 12, Utah 0	1957—OSC 34, Kansas 6
1932—OSC 6, Fordham 8	1957—OSC 22, Northwestern 13
1932—OSC 6, Detroit U. 14	1958—OSC 12, Kansas 0
1933—OSC 9, Fordham 6	1958—OSC 0, Wyoming 28
1933—OSC 0, Nebraska 22	1959—OSC 14, Texas Tech 15
1935—OSC 20, Nebraska 26	1959—OSC 6, Nebraska 7
1936—OSC 14, Nebraska 32	1959—OSC 7, Michigan 18
1939—OSC 28, Hawaiian All-Stars 0	1960—OSU 12, Iowa 22
1939—OSC 39, University of Hawaii 6	1960—OSU 29, Houston 20
1941—OSC 20, Duke 16*	1960—OSU 20, Indiana 6
1942—OSC 7, Michigan State 7	1961—OSU 20, Wisconsin 23
1947—OSC 27, Nebraska 6	1961—OSU 23, Ariz State 24
1947—OSC 6, Utah 7	1961—OSU 12, Houston 23
1948—OSC 21, Michigan State 46	*Rose Bowl Game at Durham, N.C.
	**Pineapple Bowl Game at Honolulu.
	***Rose Bowl Game at Pasadena

PCC Titles Won

	Outright Championship	Co- Champions
Southern California	10	2
California	8	3
Stanford	5	3
UCLA	5	1
Washington	3	1
Oregon State	2	1
Washington State	2	0
Oregon	0	4
Idaho	0	0

OSU Attendance

(Since World War II)

	1946		1950
UCLA	40,203	Michigan State	32,500
Portland U.	9,000	Stanford	16,000
USC	29,594	Washington	27,876
WSC	14,000	California	37,000
Idaho	3,500	Idaho	9,000
California	25,000	Wash. State	13,000
Oregon	20,000	UCLA	15,323
Washington	26,808	Montana	4,000
Stanford	18,000	Oregon	26,800
	<hr/>		<hr/>
Total (9 games)	166,105	Total (9 games)	184,499
	1947		1951
Utah	22,175	Michigan State	33,373
Washington	39,000	Utah	9,000
Idaho	10,000	Idaho	7,500
USC	61,000	USC	36,400
Portland U.	6,657	Wash. State	15,500
Stanford	15,000	California	43,000
UCLA	30,870	UCLA	26,598
WSC	14,000	Stanford	40,000
Oregon	20,211	Washington	36,000
Nebraska	20,000	Oregon	19,700
	<hr/>		<hr/>
Total (10 games)	238,913	Total (10 games)	277,071
	1948		1952
Idaho	8,400	Utah	15,000
USC	50,237	Michigan State	22,595
Washington	25,029	Stanford	28,000
Portland U.	6,500	USC	17,438
California	55,000	Wash. State	15,000
UCLA	30,933	Washington	19,243
Michigan State	12,000	UCLA	22,585
WSC	12,000	Idaho	8,000
Utah	8,000	Oregon	21,333
Oregon	22,000		<hr/>
Nebraska	12,900	Total (9 games)	169,194
Hawaii U. (Pine-apple Bowl)	15,000		<hr/>
	<hr/>		<hr/>
Total (12 games)	257,999		<hr/>
	1949		1953
UCLA	37,427	UCLA	39,209
Utah	25,012	California	13,442
California	18,885	Washington	28,000
Washington	27,000	Stanford	8,005
Montana	8,000	USC	34,163
Stanford	25,000	Idaho	9,200
Wash. State	15,000	Michigan State	51,108
Idaho	9,000	WSC	13,500
Michigan State	22,239	Oregon	18,500
Oregon	23,000		<hr/>
	<hr/>	Total (9 games)	215,127
Total (10 games)	210,563		<hr/>

1954

Idaho	9,000
Washington	19,667
WSC	18,000
Nebraska	39,000
UCLA	8,500
USC	30,065
Minnesota	49,000
California	25,000
Oregon	21,200
Total (9 games)	<u>219,432</u>

1955

Brigham Young	8,000
Stanford	24,748
UCLA	57,664
Col. of Pacific	22,500
WSC	17,000
Washington	25,000
California	35,000
Idaho	9,000
Oregon	22,000
Total (9 games)	<u>220,912</u>

1956

Missouri	22,000
USC	53,714
Iowa	41,027
California	14,125
WSC	14,500
UCLA	17,080
Washington	32,890
Stanford	65,000
Idaho	5,000
Oregon	17,300
Iowa (Rose Bowl)	100,000
Total (11 Games)	<u>382,636</u>

1957

USC	36,885
Kansas	28,000
Northwestern	34,500
Idaho	14,600
UCLA	46,120
Washington	31,500
WSC	20,200
California	50,000
Stanford	20,000
Oregon	23,150
Total (10 Games)	<u>304,955</u>

1958

USC	40,312
Kansas	28,115
UCLA	18,532
Wyoming	12,580
Idaho	8,618
Washington	29,514
California	21,426
WSC	18,191
Stanford	26,509
Oregon	27,574
Total (10 games)	<u>231,371</u>

1959

USC	24,395
Texas Tech	20,000
Nebraska	28,000
Michigan	74,693
Idaho	10,628
California	41,500
WSU	17,601
Washington	48,000
Stanford	10,900
Oregon	22,500
Total (10 games)	<u>298,217</u>

1960

USC	32,928
Iowa	43,000
Houston	22,537
Indiana	25,000
Idaho	10,500
Washington	36,833
California	15,745
WSU	15,600
Stanford	7,500
Oregon	27,009
Total (10 games)	<u>226,652</u>

1961

Syracuse	35,279
Stanford	13,727
Wisconsin	45,274
Idaho	9,329
Arizona State	32,231
WSU	13,716
Washington	51,500
BYU	8,495
Oregon	21,300
Houston	12,000
Total (10 games)	<u>243,301</u>

Through The Years

Year	Name of Coach	Won	Lost	Tied	Points	Against
1893	Bill Bloss	4	1	0	144	48
1894	Kennedy	2	1	0	52	28
1895	Paul Downing	0	2	1	6	80
1896	Tommy Code	0	2	0	8	14
1897	Bill Bloss	2	0	0	42	8
1898	No Coach	1	2	1	36	78
1899	Mr. Stickney	3	2	0	75	60
1902	Frank Herbold	4	1	1	158	16
1903	McFadden	2	4	1	21	32
1904	Dr. Steckle	4	2	0	119	22
1905	Dr. Steckle	6	3	0	166	28
1906	F. S. Norcross	4	1	2	77	4
1907	F. S. Norcross	6	0	0	137	0
1908	F. S. Norcross	4	3	1	83	51
1909	Sol S. Metzger	4	2	1	54	47
1910	C. H. Schildmiller	3	2	1	27	43
1911	Sam Dolan	5	2	0	119	49
1912	Sam Dolan	3	4	0	57	40
1913	E. J. Stewart	3	2	3	59	75
1914	E. J. Stewart	7	0	2	172	15
1915	E. J. Stewart	5	3	0	166	73
1916	Joseph Pipal	4	5	0	92	112
1917	Joseph Pipal	4	2	1	83	33
1918	W. H. Hargiss	2	4	0	33	46
1919	W. H. Hargiss	4	4	1	143	64
1920	R. B. Rutherford	2	2	2	20	52
1921	R. B. Rutherford	4	3	2	231	42
1922	R. B. Rutherford	3	4	0	44	42
1923	R. B. Rutherford	4	5	2	55	71
1924	Paul J. Schissler	3	5	0	71	85
1925	Paul J. Schissler	7	2	0	268	81
1926	Paul J. Schissler	7	1	0	221	30
1927	Paul J. Schissler	3	3	1	98	78
1928	Paul J. Schissler	6	3	0	206	53
1929	Paul J. Schissler	5	4	0	182	106
1930	Paul J. Schissler	7	3	0	208	60
1931	Paul J. Schissler	6	3	1	198	62
1932	Paul J. Schissler	4	6	0	130	109
1933	Lon Stiner	6	2	2	88	48
1934	Lon Stiner	3	6	2	104	131
1935	Lon Stiner	6	4	1	175	100
1936	Lon Stiner	4	6	0	116	151
1937	Lon Stiner	3	3	3	71	60
1938	Lon Stiner	5	3	1	72	51
1939	Lon Stiner	9	1	1	186	77
1940	Lon Stiner	5	3	1	128	80
1941	Lon Stiner	8	2	0	143	49
1942	Lon Stiner	4	5	1	157	142
1943-44	No Team (wartime)					
1945	Lon Stiner	4	4	1	100	131
1946	Lon Stiner	7	1	1	157	81
1947	Lon Stiner	5	5	0	171	136
1948	Lon Stiner	5	4	3	249	237
1949	Kip Taylor	7	3	0	232	188
1950	Kip Taylor	3	6	0	107	183
1951	Kip Taylor	4	6	0	204	180
1952	Kip Taylor	2	7	0	123	267

1953	Kip Taylor	3	6	0	39	187
1954	Kip Taylor	1	8	0	60	296
1955	Tommy Prothro	6	3	0	126	120
1956	Tommy Prothro	7	3	1	203	166
1957	Tommy Prothro	8	2	0	203	129
1958	Tommy Prothro	6	4	0	98	118
1959	Tommy Prothro	3	7	0	166	178
1960	Tommy Prothro	6	3	1	197	145
1961	Tommy Prothro	5	5	0	165	137
Totals	282	207	43	7901	5705

OSU Football Captains 1893 to Present

1893-94—No Record	1919-20—Henry Rearden
1894-95—No Record	1920-21—Chuck Rose
1895-96—A. J. Stimpson	1921-22—Gap Powell
1896-97—A. J. Stimpson	1922-23—Percy Locey
1897-98—Daniel Bodine	1923-24—Millard Scott
1898-99—No Record	1924-25—No capains elected full season. This continued on through Lon Stiner years, 1933-1949. Stiner normally appointed individual captains for each particular game.
1899-00—Fred Walters	1949-50—Tom DeSylvia
1900-01—No football—athletics prohibited by Regents	1950-51—Arvid Niemi (for Stan McGuire, who was killed prior to season)
1901-02—John Gault	1951-52—John Thomas
1902-03—John Gault	1952-53—Jim Cordial
1903-04—Bert Pilkington	1953-54—LaVerne Ferguson
1904-05—Bert Pilkington	1954-55—Wes Ediger, Jim Withrow (co-captains)
1905-06—Herb Root	1955-56—Ron Siegrist, Howard Buettgenbach (co-captains)
1906-07—Leonard Darby	1956-57—Dick Corrick, Gerry Laird (co-captains)
1907-08—Frank Pendergrass	1957-58—Ted Searle
1908-09—Carl Wolff	
1909-10—James Evenden	
1910-11—Bird Hawley	
1911-12—Tom E. May	
1912-13—Otto Sitton	
1913-14—James Shaw	
1914-15—Gus Hofer	
1915-16—Brewer Billie	
1916-17—Lee Bissett	
1917-18—Meier Newman	
1918-19—Raymond Archibald	
1958-59—Buzz Randall, Jim Brackins (co-captains) (Randall died before season began).	1959-60—George Enderle,

Jerry Doman, Ed Kaohelauii (co-captains).

1960-61—Doug Bashor.

1961-62—Mike Kline

Ex-Beavers Who Played Pro Football In The Past

Zuck Carlson—Chicago Bears
Bill McKalip—Detroit Lions
Red Franklin—Brooklyn Dodgers
Ade Schwammel—Green Bay Packers
Hal Moe—Chicago Cardinals
Gil Bergerson—Detroit Lions
Howard Maple—Washington Redskins
Hal Pangle—Chicago Cardinals
Harry Field—Chicago Cardinals
Frank Ramsey—Chicago Bears
Len Younce—New York Giants
Vic Sears—Philadelphia Eagles
Eberle Schultz—Los Angeles Dons
Joe Wendlick—Philadelphia Eagles
Kenny Dow—Washington Redskins
Elmer Kolberg, Pittsburgh Steelers
Don Durdan—San Francisco 49ers
Don Samuel—Pittsburgh Steelers
Bill Austin—New York Giants
Doug Hogland—SF 49ers, Chicago Cardinals, Detroit Lions
Herm Clark—Chicago Bears
Jim Clark—Washington Redskins
Bob Redkey—Calgary Stampeders (Canada)
Bill West—Saskatchewan Roughriders (Canada)
John Witte—Saskatchewan Roughriders (Canada)
Sam Wesley—Saskatchewan Roughriders (Canada)
Dave Mann—Chicago Cardinals (NFL)

Ex-Beavers Still Active In Pro Football

Sam Baker—Dallas Cowboys (NFL)
Ted Bates—St. Louis Cardinals (NFL)
Joe Francis—Montreal (Canada)
Paul Lowe—San Diego Chargers (AFL)
Jack Gotta—Saskatchewan Roughriders (Canada)
Nub Beamer—Vancouver BC Lions (Canada)
Bill Austin—Asst. Coach Green Bay Packers (NFL)
Ken Carpenter—Head Coach, Indianapolis
Len Younce—Asst. Coach Saskatchewan Roughriders (Canada)
Aaron Thomas—SF 49ers (NFL)
Dainard Paulson—N.Y. Titans (AFL)
Jim Stinette—Denver Broncos (AFL)
Amos Marsh—Dallas Cowboys (NFL)
Neil Plumley—Saskatchewan Roughriders (Canada)
Roger Johnson—Saskatchewan Roughriders (Canada)
Hank Rivera—Oakland Raiders (AFL)
Chuck Marshall—Denver Broncos (AFL)

OSU Men Now Coaching Football

- Len Younce—Asst. Coach, Saskatchewan Roughriders (Canada)
Bill Austin—Assistant Coach, Green Bay Packers (NFL)
Jerry Long—Asst. Coach, Oregon State University
Ron Siegrist—Assistant Coach, Oregon State University
Bob McKittrick—Assistant Coach, Oregon State University
Tom DeSylvia—Head Coach, Portland State College.
Fred Burri—Assistant Coach, Mt. San Antonio JC, Pomona, Cal.
Ernie Zwahlen—Assistant Coach, Iowa State University
Dick Corrick—Asst. Coach, Iowa State University
Joe Kasberger—Head Coach, St. Benedict's Prep, Newark, N.J.
Frank Negri—Assistant Coach, Rio Linda high, Sacramento, Cal.
Larry Stevens—Assistant Coach, Grants Pass
Wes Hogland—Head Coach, Molalla high
Doug Hogland—Head Coach, Tillamook high
Andy Knudsen—Head Coach, St. Helens high
Lee Gustafson—Head Coach, Corvallis
Bob Stevens—Head Coach, Acalanes high, Lafayette, Cal.
Tag McFadden—Head Coach, Corning high, Corning, Cal.
Bill Peden—Head Coach, Junction City high
Duke Moore—Head Coach, Beaverton
Wes Ediger—Head Coach, Dallas High.
Jim Inglesby—Assistant Coach, Hi School in S.F. Bay area.
John Witte—Head Coach, McLaren Boys School, Woodburn
Rudy Ruppe—Head Coach, Reedsport high
Gene Morrow—Head Coach, Newport high
Tom Van Etten—Head Coach, Prineville high
Paul Evensen—Assistant Coach, Medford high (Head Wrestling)
Loyd Buettgenbach—Assistant Coach, Inglewood, Cal.
Yale Rohlff—Head Coach, San Mateo high (Calif)
Howard Buettgenbach—Assistant Coach, Torrance, Cal.
Jim Luster—Assistant Coach, Albany high (Head Track)
Gary McClain—Assistant Coach, Albany high (Head Wrestling)

Dick Sutherland—Head Coach, Bandon high

Dick Gray—Assistant Coach, Benson high, Portland (Head Basketball)

Arvid Niemi—Assistant Coach, San Mateo high (Calif.)

Cliff Snider—Assistant Coach, Clackamas high (Ath. Dir.)

Lew Williams—Assistant Coach, Corvallis high

Vern Steward—Head Coach, Eagle Point high

Jim Mallon—Head Coach, Heppner high

Jack Hoxie—Assistant Coach, Junction City high (Head Basketball)

Joe Hellberg—Assistant Coach, Lebanon high (Head Baseball)

Frank Roelandt—Assistant Coach, Medford high (Head Basketball)

Eldore Baisch—Assistant Coach, McMinnville high (Head Basketball)

George Crandall—Assistant Coach, Milwaukie high (Head Basketball)

Jim Brackins—Assistant Coach, Newberg high

Tom Pickens—Assistant Coach, North Salem High

John Horrillo—Assistant Coach, Thurston High, Springfield

Jack Orr—Assistant Coach, Myrtle Point high (Head Basketball)

Jerry Crimins—Assistant Coach, Clackamas high (Head Basketball)

Art Keith—Assistant Coach, Newberg high (Head Wrestling)

Al Piche—Assistant Coach, Crater high (Head Baseball)

Wayne Fox—Assistant Coach, North Bend high (Head Basketball)

Bob Stolz—Assistant Coach, Pacific high (Head Basketball)

Dick Bumula—Assistant Coach, Silverton high (Head Wrestling)

Bobo Clingman—Head Coach, Thurston high, Springfield

John Wyttenberg—Head Coach, Sunset high.

John Abel—Assistant Coach, Alsea High (Head Basketball)

Jim Withrow—Assistant Coach, Corvallis high

Cal Hersey—Assistant Coach, Gresham high (Head Basketball)

Earnel Durden—Assistant Hi School Coach, Compton, Cal.

Tom Berry—Assistant Coach, Tigard high.

Ken Brown—Head Coach, Estacada high.

OREGON STATE FOOTBALL LEADERS

Total Offense, season:

1473	Terry Baker (1960)
1230	Terry Baker (1961)
1082	Joe Francis (1957)
1003	Ken Carpenter (1949)
848	Don Samuel (1948)
839	Nub Beamer (1957)
832	Ken Carpenter (1948)
808	Sam Baker (1951)
751	Joe Francis (1956)
733	Dave Mann (1951)
700	Paul Lowe (1956)
689	Don Samuel (1947)

Rushing, season:

808	Sam Baker (1951)
760	Nub Beamer (1957)
689	Ken Carpenter (1949)
626	Joe Francis (1957)
622	Sam Baker (1950)
610	Terry Baker (1960)
589	Ken Carpenter (1946)
517	Sam Baker (1952)
511	Don Kasso (1960)
508	Earnel Durden (1956)
496	Dick Twenge (1948)
489	Jim Kisselburgh (1940)

Passing, season:

875	Terry Baker (1961)
863	Terry Baker (1960)
615	Gene Morrow (1949)
601	Jim Withrow (1952)
595	Gene Morrow (1950)
593	Don Samuel (1943)
520	Don Samuel (1947)
513	Gene Morrow (1951)
504	Jim Withrow (1953)
477	Joe Gray (1937)
456	Joe Francis (1957)
454	Bob Dethman (1941)

Scoring, season:

67	Sam Baker (1951)
54	Ken Carpenter (1949)
54	Joe Francis (1957)
48	Don Samuel (1948)
48	Nub Beamer (1957)
46	Don Kasso (1960)
43	Tom Berry (1956)
42	Gene Taft (1950)
42	Sam Baker (1952)

Receiving, season:

36	John Thomas (1950)	350
29	Jack Gotta (1952)	351
27	John Thomas (1951)	286
25	Rudy Ruppe (1948)	269
24	Don Mast (1947)	250
22	Leon Hittner (1954)	222
20	Don Kasso (1961)	258
19	Bob DeGrant (1957)	239
17	Stan McGuire (1949)	308

Total Offense, career:

2846	*Ken Carpenter (46-47-48-49)
2703	Terry Baker (60-61)
2669	Joe Francis (55-56-57)
2222	Don Samuel (46-47-48)
1947	Sam Baker (50-51-52)
1746	*Dick Twenge (46-47-48-49)
1642	Gene Morrow (49-50-51)

Rushing, career:

1947	Sam Baker (50-51-52)
1910	*Ken Carpenter (46-47-48-49)
1378	*Dick Twenge (46-47-48-49)
1369	Joe Francis (55-56-57)
1358	Nub Beamer (56-57-58)
1297	Jim Kisselburgh (38-39-40)
1092	Earnel Durden (56-57-58)
981	Don Kasso (59-60-61)
965	Terry Baker (60-61)
889	Don Samuel (46-47-48)

Passing, career:

1738	Terry Baker (60-61)
1723	Gene Morrow (49-50-51)
1537	*Jim Withrow (51-52-52-54)
1353	Don Samuel (46-47-48)
1300	Joe Francis (55-56-57)
936	*Ken Carpenter (46-47-48-49)
	* 4 years

All-Time OSU Football Records

INDIVIDUAL

(Single Game)

Rushing:

Most rushes—31, Sam Baker (Utah, 1952)

Most net yards—233, Dave Mann (Utah, 1951)

Highest avg. per rush (min. 8 rushes)—21.2 (11 for 233) Dave Mann (Utah, 1951)

Forward Passing:

Most attempts—28, Chuck Brackett (UCLA, 1952)

Most completions—16, Terry Baker (Washington, 1960)

Most had intercepted—no player with more than three.

Highest percent completed (Min. 8 atts.)—.900 (9 of 10) Joe Francis (Stanford 1957).

Most yards gained—246, Dick Gray, (Nebraska, 1947)

Most touchdown passes thrown—3, Dick Gray (Nebraska, 1947); Ken Carpenter (WSC, 1948), and Jim Withrow (Stanford, 1952)

Total Offense:

Most rushing and passing plays—45, Terry Baker (Washington, 1960)

Most yards rushing and passing—302, Terry Baker (Washington, 1960)

Highest avg. per play (Min. 10 plays)—21.2 (11 for 233) Dave Mann (Utah, 1951)

Pass Receiving:

Most passes caught—8, John Thomas (Mich. State, 1950) and Jack Gotta (UCLA & Stanford, 1952); Don Kasso (WSU, 1961)

Most yards gained—117, Bob Laidlaw, Nebraska, 1947)

Most touchdown passes caught—2, Don Samuel (California, 1946); Bob Laidlaw (Nebraska, 1947); Bob Laidlaw (WSC, 1948); and Jack Gotta (Stanford, 1952); Roger Johnson (Wisconsin, 1961)

Punting:

Most punts—13, Sam Baker, (USC, 1952)

Highest avg. Per punt—(min. 5 punts)—48.0 (8 for 384) Dave Mann, (Idaho, 1951)

Interception Returns:

Most passes intercepted—3, Bill Sheffold (Mich. State, 1949); Yale Rohlf (Washington, 1951); Gene Taft (California, 1951); and Joe Francis (Stanford, 1955)

Most yards returned—80, Bruce Hake (Washington 1961)

Punt Returns:

Most punt returns—6, Lee Gustafson (USC, 1946)

Most yards returned—116, Dick Gray (Utah, 1949)

Scoring:

Most touchdowns scored—3, Sam Baker (Utah & Washington, 1951); Earnel Durden (Washington, 1956) and Tom Berry (UCLA, 1956) Nub Beamer (WSC 1957)

Most points after attempted—9, Stan McGuire (Montana, 1949)

Most points after made—9, Stan McGuire (Montana, 1949)

Longest field goal made—46 yards, Ade Schwammel, 1933, against Fordham in New York City.

Most points scored—18, Sam Baker (Utah & Washington, 1951); Earnel Durden (Washington, 1956), and Tom Berry (UCLA, 1956) Nub Beamer (WSC 1957, Jim Stinnette (Idaho 1959)

INDIVIDUAL

(Season)

Rushing:

Most rushes—180, Sam Baker, (1951)
Most net yards—808, Sam Baker (1951)
Highest avg. per rush (min. 70 rushes—7.2 (71 rushes for 508)
Earnel Durden (1956)

Forward Passing:

Most attempts—134, Terry Baker (1961)
Most completions—61, Terry Baker (1961)
Most had intercepted—14, Gene Morrow (1950)
Highest percent completed (min. 50 atts.)—.643 (36 of 56) Ken
Carpenter (1948)
Highest percent completed (min. 75 atts.)—.549 (50 of 91)
Don Samuel (1947)
Most yards gained—875, Terry Baker (1961)
Most touchdown passes—10, Ken Carpenter (1948)

Total Offense:

Most rushing and passing plays—228, Terry Baker (1960)
Most yards gained—875, Terry Baker (1960)
(1960)
Highest avg. per play (min. 100 plays)—6.5, Terry Baker
(1960)

Pass Receiving:

Most passes caught—36, John Thomas (1950)
Most yards gained—351, Jack Gotta (1952); 350, John Thomas
(1950)
Most touchdown passes caught—4, Don Samuel (1948)

Punting:

Most punts—60 Sam Baker (1952)
Highest avg. per punt—(min. 25 punts)—45.5 (32 punts for
1458 yards) Dainard Paulson (1959)

Interceptions:

Most passes intercepted—9, Bill Sheffold (1949)
Most yards returned—126, Bill Sheffold (1949)

Punt Returns:

Most punt returns—26, Bob Dethman (1940)
Most yards returned—253, Sterling Hammack (1957)

Kickoff Returns

Most kickoff returns—15, Ron Miller (1959)
Most Yards returned—453, Ron Miller (1959)

Scoring:

Most touchdowns scored—11, Sam Baker (1951).
Most points after attempted—33, Stan McGuire (1949)
Most points after made—29, Stan McGuire (1949)
Most field goals kicked—2 Ade Schwammel (1933) and Ted
Searle (1955 and 1957)
Most total points scored—67, Sam Baker (1951)

INDIVIDUAL

(Career)

Rushing:

Most rushes—487, Sam Baker

*441, Ken Carpenter

Most net yards gained—1947, Sam Baker

*1910, Ken Carpenter

Highest avg. per rush—(min. 200 rushes)—4.36 Joe Francis (314-1369) 4.3 Ken Carpenter 4.0 Don Samuel (217-869)

3.99 Sam Baker

Forward Passing:

Most attempts—304, Gene Morrow

*289, Jim Withrow

Most completions—128, Gene Morrow

*124, Jim Withrow

Most had intercepted—31, Gene Morrow

*31, Jim Withrow

Highest percent completed (Min. 150 atts.) —

.571 Joe Francis (89 of 156)

.482, Terry Baker (121 of 151)

.474, Don Samuel (102 of 215)

Most yards gained—1738, Terry Baker

Most touchdown passes thrown—13, Gene Morrow

Total Offense:

Most rushing and passing plays—*607, Ken Carpenter

497, Sam Baker

Most yards gained rushing and passing—*2846, Ken Carpenter

2703, Terry Baker

Highest avg. per play (min. 250 plays) —

6.21 Terry Baker (435 for 2703)

5.68, Joe Francis (470 for 2669)

5.14, Don Samuel (432 for 2222)

Pass Receiving:

Most passes caught—77, John Thomas

*44, Ken Carpenter

Most yards gained—858, John Thomas

*692, Ken Carpenter

Most touchdown passes caught—7, Don Samuel; 6, Bob Laidlaw.

Punting:

Most punts—151, Jim Kisselburgh; 122, Sam Baker.

Highest avg. per punt (Min. 100 punts) —

39.1, Sam Baker (122 punts for 4775 yards)

36.9, Jim Kisselburgh (151-5566)

Interceptions:

Most passes intercepted—11, Bill Sheffold

* 9, Ken Carpenter

Most yards returned—142, Bill Sheffold

Punt Returns:

Most punt returns—*46, Ken Carpenter

38, Bob Dethman

Most yards returned—*596, Ken Carpenter

379, Dick Gray

Kickoff Returns:

Most kickoff returns—*38, Ken Carpenter

18, Tom Berry

Most yards returned—*820, Ken Carpenter

393, Tom Berry

Scoring:

- Most touchdowns scored—23, Sam Baker
 *21, Ken Carpenter
 *20, Dick Twenge
- Most points attempted after TD—59, Stan McGuire
- Most points after made—38, Stan McGuire
- Most field goals kicked—4, Ted Searle
- Most total points scored—139, Sam Baker (23 TD's, 1 PAT)
 *126, Ken Carpenter
 *—Played 4 years
 ‡—One year remaining.

TEAM OFFENSE**(Single Game)****Rushing:**

- Most rushes—78, Utah (1952)
- Most net yards—616, Utah (1951)
- Highest avg. per rush—9.5 (65 for 616) Utah (1951)

Forward Passing:

- Most attempts—34, UCLA (146); Idaho (1947) and Stanford (1950)
- Most completions—19, California (1951)
- Most had intercepted—5, California and Portland U (1948); Washington (1950); and Oregon (1954)
- Highest percent completed (min. 10 atts.) .909 (10 of 11) Stanford (1957)
- Most yards gained—269, Idaho (1948)
- Most touchdowns by passing—3, California (1946); Nebraska (1947); WSC, Mich. State and Portland U (1948); Idaho (1951); and Stanford (1952)

Total Offense:

- Most rushing and passing plays—92, Stanford (1950, and Utah (1952)
- Most yards gained rushing and passing—706, Utah (1951)
- Highest avg. per play—9.2 (77 for 706) Utah (1951)

Punting:

- Most punts—13, USC (1952)
- Highest avg. per punt—(min. 5 punts)—48.0 (8 for 384) Idaho (1951)

Interceptions:

- Most passes intercepted—7, Idaho (1946)
- Most yards returned—139, Montana (1949)

Punt Returns:

- Most punt returns—9, Idaho (1959)
- Most yards returned—205, Montana (1949)

Kickoff Returns:

- Most kickoff returns—9, (1952)
- Most yards returned—195, WSC (1948)

Miscellaneous:

- Most first downs by rushing—23, Utah (1952)
- Most first downs by passing—11, UCLA (1946)
- Most total first downs—28, Utah (1952)
- Most penalties against—13, Brigham Young (1955)
- Most yards penalized—145, Brigham Young (1955)
- Most fumbles—10, Washington (1959)
- Most fumbles lost—5, Mich. State and Washington (1950); WSC (1952); Syracuse (1961)

TEAM DEFENSE

(Single Game)

Rushing:

- Fewest rushes—19, Washington (1946)
- Fewest net yards—Minus 43, Portland U (1946)
- Lowest avg. per rush—Minus 1.7 (26 rushes for minus 43 yards)
Portland U (1946)

Forward Passing:

- Fewest attempts—3, Stanford (1952)
- Fewest completions—1, Oregon (1946); and Washington (1956);
Washington (1961)
- Most had intercepted—7, Idaho (1946)
- Lowest percent completed (min. 10 atts.)—.100 (1 of 10)
Washington (1961)
- Fewest yards gained—6, Stanford (1952)

Total Defense:

- Fewest rushing and passing plays—41, Oregon (1946) and Idaho
(1947)
- Fewest yards gained rushing and passing—66, Montana (1950)
- Lowest avg. per play—1.3 (51 plays for 66 yards) Montana
(1950)

Punting:

- Most time opp. forced to punt—11, Stanford (1946)
- Lowest avg. per punt (min. 5 punts)—23.6 (8 for 189) Oregon
(1946)

Miscellaneous:

- Fewest total first downs—3, Oregon (1946)
- Most penalties against opp.—19, California (1951)
- Most yards penalized—115, UCLA (1952) and Northwestern
(1957)
- Most fumbles by opp.—9, Stanford (1950)
- Most fumbles lost—5, USC (1947); Stanford and Washington
(1950); Stanford (1952); Idaho (1954); and Missouri (1956)

TEAM OFFENSE

(Season)

Rushing:

- Most rushes—559 (1957)
- Most net yards gained—2478 (1957)
- Highest avg. per rush—4.9 (474 for 2336) (1960)
- Most yards per game—247.8 (1957)

Forward Passing:

- Most attempts—212 (1948)
- Most completions—100 (1948)
- Most had intercepted—22 (1951)
- Highest percent completed—.533 (40 of 75) (1956)
- Most yards gained—1368 (1948)
- Most touchdowns by passing—13 (1948)
- Most yards per game—131.8 (1949)

Total Offense:

- Most rushing and passing plays—697 (1948)
- Most yards gained rushing and passing—3306 (1960)
- Highest avg. per play—5.4 (613 for 3306) (1960)
- Most yards per game—330.6 (1960)

Punting:

- Most punts—91 (1939)
- Fewest punts—48 (1956)
- Highest avg. per punt—39.9 (67 for 2674 yards) (1951)

Interceptions:

Most passes intercepted—26 (1946) ; 25 (1949)
Most yards returned—436 (1959)

Punt Returns:

Most punt returns—42 (1940)
Most yards returned—536 (1949)
Highest avg. per return—17.9 (30 for 536) (1949)

Kickoff Returns:

Highest avg. per return—24.2 (36 for 872) (1959)

Scoring:

Most touchdowns scored—33 (1949)
Most points after made—29 (1949)
Most field goals kicked—2 (1933, 1955, and 1957)
Most total points—268 (1925)

Miscellaneous:

Most first downs by rushing—133 (1957)
Most first downs by passing—51 (1948)
Most total first downs—170 (1957)
Most penalties against—74 (1960)
Most yards penalized—732 (1956)
Most fumbles—42 (1959)
Most fumbles lost—26 (1954)

TEAM DEFENSE**(Season)****Rushing:**

Fewest rushes—298 (1939)
Fewest net yards gained—781 (1939)
Lowest avg. per rush—2.6 (1939)
Fewest yards per game—86.8 (1939)

Forward Passing:

Fewest attempts—111 (1937)
Fewest completions—39 (1937)
Most passes had intercepted—26 (1946)
Lowest percent completed—.338 (51 of 151) (1940)
Fewest yards gained—511 (1937)
Fewest touchdowns by passing—3 (1955)
Fewest yards per game—56.8 (1937)

Total Defense:

Fewest rushing and passing plays—464 (1939)
Fewest yards gained rushing and passing—1671 (1937)
Lowest avg. per play—3.4 (1941)
Fewest yards pergame—185.7 (1937)

Punting:

Most times opp. forced to punt—90 (1940)
Lowest avg. per punt—32.2 (1948)
Most punts had blocked—3 (1939)

Punt Returns:

Fewest punts returned—16 (1961)
Fewest yards returned—109 (1956)
Lowest avg. per return—5.8 (1957)

Interceptions:

Fewest Passes Intercepted—8 (1941, 1956 and 1957)

Fewest yards returned—41 (1956)

Kickoff Returns:

Lowest avg. per return—15.8 (1953)

Miscellaneous:

Fewest total first downs—79 (1939 and 1940)

Most times opp. penalized—64 (1951)

Most yards penalized—544 (1952)

Most fumbles by opp.—44 (1954)

Most fumbles lost—26 (1954)

Fewest points scored by opp.—0 (1907 team in six games)

Largest Athletic Crowds in State of Oregon History

1. OSU vs. Southern Cal, 1957	36,885
2. OSU vs. Washington, 1960	36,833
3. Oregon vs. Washington, 1959	35,997*
4. OSU vs. Syracuse, 1961	35,729
5. Oregon vs. Washington, 1930	35,265
6. High School Jamboree, 1952	34,081
7. OSU vs. Oregon, 1933	33,467
8. OSU vs. Washington, 1956	32,890
9. Oregon vs. Washington, 1961	32,681
10. Oregon vs. Washington, 1949	32,600

(*Oregon announced crowd of 37,261, but turnstile count was 35,997)

Above games all were at Multnomah Stadium in Portland, Oregon.

OSU All-Opponents 1961

End—Pat Richter (Wisconsin) 26

Tackle—John Meyers (Washington) 21

Center—Dan Birdwell (Houston) 25

Guard—Jim Skaggs (Washington) 27

Guard—Mickey Ording (Oregon) 14

Tackle—John Brown (Syracuse) 26

End—Hugh Campbell (Wash. State) 17

Quarterback—Ron Miller (Wisconsin) 27

Halfback—Ken Bolin (Houston) 16

Halfback—Ernie Davis (Syracuse) 18

Fullback—George Reed (Wash. State) 11

(These men were selected by OSU players.
Number of votes received follow names)

THE COACHES

TOMMY PROTHRO, Head Coach

Winningest football coach on the west coast . . . the man who brought OSU to the top in grid prominence . . . believer in tough, rough football played with cunning finesse.

Those descriptions all fit Tommy Prothro, Oregon State's head football coach now entering his 8th season with the Beavers. The day that Prothro came to OSU was indeed a fortunate one for the school and for grid followers.

Success has characterized his entire coaching career. He was with the late Red Sanders for almost a decade, first at Vanderbilt and later at UCLA. And since becoming head coach at Oregon State, his teams have won 41, lost 26 and tied two games in seven full seasons.

That record now stands as the best percentage of any west coast football coach, with a mark of .612. Included, of course, were two Pacific Coast conference championships when that league was still in effect, and a Rose Bowl appearance against Iowa at Pasadena.

When Prothro came to OSU, the Beavers had just experienced their worst season in half a century of football. They had won the 1954 opener against Idaho, then lost the remaining eight games by scores of anywhere from 20 to 70 points. That, of course, was before Prothro.

In Tommy's first season of 1955, the Beavers emerged from their last place league finish of the year previous to that of runner-up, with a respectable 6-3 record. In 1956, Tommy's second year, OSU won the undisputed PCC crown and the Rose Bowl bid, following that up with a tie for first with Oregon the following year. Because of the no-succession rule, Oregon went to the Rose Bowl, even though OSU had defeated the Ducks.

Actually, Oregon State has experienced only one losing season under Prothro. That came in 1959, when the Beavers suffered a rash of injuries and dropped some heartbreakers. The injury jinx prevailed again in 1960, too, but it didn't prevent Tommy's forces from bouncing back with a 6-3-1 mark and 5-5 in 1961.

Son of J. Thompson (Doc) Prothro, who at one time managed the Philadelphia Phils in major league baseball, Tommy competed in football, basketball and track for Central high in his native Memphis, Tenn. That was 1934 through 1936. He also participated in those sports at Riverside Military Academy in 1936-37-38.

Tommy was a star blocking back under Coach Wallace Wade at Duke, playing against OSU in the "transplanted" Rose Bowl of January 1, 1942, at Durham, N. C. He won the Jacobs award as the best blocker in the east. He also competed in baseball and lacrosse at Duke from 1938 through 1942, when he graduated.

Prothro was a naval officer in World War II and already had served a stint as line coach at Western Kentucky. After discharge in 1946, he coached the Vanderbilt "B" squad and in 1947 became backfield coach under Sanders. Prothro went to UCLA with Sanders in 1949 and remained there until he took the OSU job.

Tommy developed top backs at UCLA as the Bruins ruled the western roost and won the national title in 1954. Among those were Paul Cameron, Primo Villanueva and Bob Davenport. At OSU, Tommy took sophomore Joe Francis and made him into one of the top single-wing tailbacks of all time, highlighted by a great Rose Bowl effort of 203 yards against Iowa.

Tommy's father, now semi-retired and still living in Memphis, is an anxious Beaver follower these days and often travels great distances to see his son's teams perform, as does Tommy's mother. Tommy's wife is the former Shirley Seagle of Memphis. He has a daughter, Ann, now living in Kentucky.

ASSISTANT COACHES

BOB WATSON

Senior Assistant

One of Tommy Prothro's greatest attributes has been the ability to surround himself with hustling young assistants—men who eat, sleep and talk football. One falling in that category is Bob Watson, who in 1958 became senior assistant on Prothro's successful coaching corps.

Watson needs no introduction to state of Oregon sports fans. for he was one of the all-time greats in this state in both football and basketball. While a prep star at Medford high school, he won all-state honors in both sports and was widely sought by numerous colleges.

Watson enrolled at UCLA and played three seasons of varsity football there—both as end and back. He graduated from UCLA in 1951 and assisted with spring practice sessions there when free from his job with a metropolitan firm in that area.

When Prothro won the OSU coaching assignment in 1955, one of the first he contacted about becoming an assistant was Watson. The latter, of course, was on Tommy's first staff here in 1955 and has been a solid fixture since.

He is married and has two children.

BOB ZELINKA

Line Coach

Small in size, but a true "fireball" when it comes to coaching zip and determination—that's a brief description of Bob "Tiger" Zelinka, Prothro's young capable line coach who came here with Tommy in 1955.

Zelinka, though highly firm with the men he coaches, nevertheless has been extremely popular with all. One of his greatest boosters is John Witte, all-American tackle in 1956, who was a Zelinka protege.

The "Tiger" was a prep star in Los Angeles and later became a prize guard at Santa Ana junior college before transferring to UCLA. He played for the Bruins in 1950 and 1951, graduating in 1952. Zelinka assisted with spring practice at UCLA and coached the line for San Diego Navy in 1952-1954. He then returned to UCLA as freshman line coach.

Zelinka, like all the other coaches, is a man devoted to football who can show the players first-hand what he expects them to do. Just as important, he provides much of the spirit so necessary in daily workouts. He is married, and the father of two daughters.

RON SIEGRIST

Assistant Coach

First player coached by Tommy Prothro at Oregon State to become a member of the Beaver staff—that's the story of young Ron Siegrist, who returned to his alma mater four years ago.

Ron was blocking back, co-captain and signal-caller on Prothro's first OSU team in 1955 that surprised all by finishing second in the PCC race. Prior to that, Siegrist had played t-formation football under Kip Taylor here in 1952 and 1953 but did not participate in 1954.

This offensive line coach was a highly-successful prep mentor at Notre Del Rio high in Sacramento from 1956 through 1958. His last club there was ranked No. 1 Class A in all northern California, as he used the identical system to that he played at OSU.

As a player, Siegrist went all-out on every occasion, and was

regarded as one of the sharpest signal-callers in the trade. He is married, and the father of three children.

BOB GAMBOLD

Assistant Coach

Joining Oregon State's grid staff a year ago was the former No. 1 aide at Washington State under Jim Sutherland, tall and talented Bob Gambold. Originally from Longview, Wash., Gambold starred at Quarterback for the Cougars in the 1948-50 era and also was a member of WSU's northern division championship basketball team of 1950.

After graduation, Bob coached the Cougar Frosh several years and then played pro football with the Chicago Cardinals and Philadelphia Eagles. In 1954, he became head basketball and baseball coach at Everett (Wash.) JC, a post he held until joining the Cougar grid staff in 1956.

Gambold proved highly valuable in his first season and is a welcome addition to the Beaver staff. He and Mrs. Gambold are the parents of three daughters and a son.

JERRY LONG

Assistant Coach

A former Oregon State football guard, personable Jerry Long, joined the Beaver staff a year ago, after six seasons as line coach at Willamette university in nearby Salem.

Long came to OSU fresh out of Franklin high school in Portland and lettered for the Beavers in 1946 and 1947. He graduated in 1950 and picked up prep coaching experience at Brownsville, Astoria, Rainier and Tigard, before joining Ted Ogdahl as his top aide at Willamette.

A prime student of football, Jerry is also adept stimulating squad spirit and makes a fine running mate in that category for "Tiger" Zelinka. Long also has proved his worth in the recruiting department. He is married and the father of three children.

BOB MCKITTRICK

Assistant Coach

A true Tommy Prothro product is hustling Bob McKittrick, who played under his present boss at Oregon State in 1955-57-58, and joined the Beaver staff following discharge from the marine Corps a year ago.

McKittrick hails from Baker, and worked his way up the ladder in OSU football. He saw only 30 minutes service in 1955, but lettered on the Rose Bowl team of 1956 and was a solid regular in 1957, when the Beavers repeated as champions of the PCC. Bob was a guard, and a good one.

Noted for his determined type of play, McKittrick demonstrated he'll be the same type of coach in spring drills. An excellent student scholastically while an undergraduate, he was a well-rounded man on campus.

McKittrick is married and the father of two children.

TRANSFERS AT OSU

Vern Burke, end—Bakersfield JC (Calif.)
Joe Bonilla, tackle—Bakersfield JC (Calif.)
Dick Jones, halfback—Bakersfield JC (Calif.)
Booker M. Washington, fullback—E. Los Angeles JC
Olvin Moreland, halfback—E. Los Angeles JC
Rich Koeper, tackle—San Mateo JC (Calif.)

OSU VARSITY FOOTBALL ROSTER 1962

(As of September 5)

No.	Name	Pos.	Ht.	Wt.	Age	Class	Exp.	Home Town (And School)
11	Terry Baker**	QB	6-3	191	21	Sr.	2V	Portland, Ore. (Jefferson)
14	Rich Brooks**	QB	5-11	172	21	Sr.	2V	Grass Valley, Cal. (Nev. Union)
18	Gordon Queen	QB	6-1	181	19	Soph.	Fr.	Berkeley, Cal. (St. Marys)
22	Leroy Whittle*	LH	6-1	186	21	Jr.	1V	Berkeley, Cal. (Berkeley)
26	Olvin Moreland	LH	5-11	174	20	Soph.	1JC	Los Angeles (LA High)
27	Dan Espalin	LH	5-7	168	19	Soph.	Fr.	Wilmington, Cal. (Banning)
28	John Thomas*	LH	6-2	190	21	Jr.	1V	Redlands, Cal.
34	Jim Sinyard*	RH	5-10	168	20	Jr.	1V	Redding, Cal. (Enterprise)
35	Dick Jones	RH	5-8	166	24	Sr.	2JC	Donora, Penn.
36	Booker M. Washington	FB	5-10	179	20	Soph.	1JC	Los Angeles (Jefferson)
37	Dan Sieg	RH	9-9	167	19	Soph.	Fr.	Medford, Ore.
38	Art O'Grady	FB	5-10	187	19	Soph.	Fr.	Wilmington, Cal. (Banning)
41	Tim Ankersen**	FB	5-10	178	21	Sr.	2V	Buena Park, Cal. (Mater Dei)
44	Bruce Williams*	FB	6-0	196	20	Jr.	1V	Auburn, Cal. (Placer)
46	Dick Ruhl	FB	6-1	208	21	Jr.	None	Heppner, Ore.
47	Steve Moe	FB	6-0	182	20	Jr.	Fr.	Corvallis, Ore.
50	Dick DeBisschop**	C	6-0	192	22	Sr.	2V	San Anselmo, Cal. (Drake)
52	Hoyt Keeney	C	6-2	194	19	Soph.	Fr.	Portland, Ore. (David Douglas)
53	Doug Suckling	C	6-2	189	20	Soph.	Fr.	Vancouver, Wash. (Ft. Vancouver)
55	John Farrell**	C	6-0	194	21	Sr.	2V	Sacramento, Cal. (Norte Del Rio)
60	Ross Cariaga**	RG	5-9	189	21	Sr.	2V	Conchella, Cal.
61	George Gness**	LG	6-1	200	20	Sr.	2V	Novato, Cal.

62	Warren Cole	LG	186	19	Soph.	Fr.	Stockton, Cal. (Stagg)
63	Al Funston	RG	182	19	Soph.	Fr.	Medford, Ore.
64	Fred Miller	LG	188	21	Jr.	IV	Stockton, Cal. (Franklin)
66	Ron Doman*	RG	189	20	Jr.	IV	Ontario, Ore.
67	Rick Nelson	LG	196	19	Soph.	Fr.	Salem, Ore. (South Salem)
69	Enoch James*	RT	180	22	St.	IV	Los Angeles, Cal.
70	Mike Youngquist*	RT	195	20	St.	2V	Salem, Ore. (North Salem)
72	Jim Funston**	LT	210	22	St.	2V	Medford, Ore.
73	Tom Holley	RT	209	20	Jr.	IV	Burbank, Cal. (Burroughs)
75	Paul Butler	RT	210	20	Soph.	None	Redlands, Cal.
76	Dave Gould	RT	213	19	Soph.	Fr.	North Bend, Ore.
77	Joe Bonilla	LT	201	21	Jr.	2JC	Selma, Cal.
78	Jeff Harris*	LT	201	21	Jr.	IV	Aberdeen, Wash.
79	Rich Koeper	RT	225	20	Soph.	1JC	Redwood City, Cal.
80	Vern Burke	LE	188	21	Jr.	2JC	Bakersfield, Cal. (North)
82	Paul Seale*	LE	196	23	St.	IV	Vancouver, B. C.
83	Thurman Bell	LE	171	20	Soph.	Fr.	Fresno, Cal.
84	Fred Jones**	RE	181	22	St.	2V	Oroville, Cal.
85	Len Frketch	RE	195	19	Soph.	Fr.	Chino, Cal.
86	Doug McDougal	RE	211	19	Soph.	Fr.	Portland, Ore. (Wilson)
87	Scott Miller	LE	194	19	Soph.	Fr.	Kelso, Wash.
89	Jerry Neil*	RE	205	20	Jr.	IV	Sacramento, Cal. (Norte Del Rio)

* Letters won previously.

1961 OSU STATISTICS

RUSHING:	TCB	YG	YL	NYG	AVG.	TD
Whittle, lh	81	407	43	364	4.5	3
Gates, fb	86	368	11	357	4.2	2
Baker, qb	73	484	129	355	4.9	2
Williams, fb	88	333	1	332	3.8	4
Monk, lh	42	226	14	212	5.0	
Thomas, lh	28	139	4	135	4.8	3
Sinyard, rh	27	162	31	131	4.9	
Kasso, lh-le	25	136	11	125	5.0	
Richman, fb	26	92	0	92	3.5	2
Hilliard, rh	7	49	0	49	7.0	
Rivera, rh	16	44	7	37	2.3	
Brooks, qb	5	30	0	30	6.0	
Horn, lh	3	15	0	15	5.0	
Watters, g-fb	3	7	0	7	2.3	

OSU Totals	508	2478	245	2246	4.4	16
Opponents	425	1549	287	1262	3.0	14

PASSING:	PA	PC	PI	NYG	TD	PCT.
Baker, qb	134	61	8	875	5	.455
Brooks, qb	3	3	0	70	1	1.000

OSU Totals	137	64	8	945	6	.467
Opponents	200	95	13	1174	5	.475

TOTAL OFFENSE:	Plays	NYR	NYP	TNY	AVG.	TDR
Baker, qb	207	355	875	1230	5.9	7
Brooks, qb	8	30	70	100	12.5	1

OSU Totals	655	2246	945	3178	4.9	22
------------	-----	------	-----	------	-----	----

PUNT RETURNS:	No.	Yds.	Avg.	TD
Rivera, rh	16	112	7.0	
Sinyard, rh	5	53	10.0	
Hilliard, rh	6	48	8.0	
Barnum, rh	3	33	11.0	
Washburn, re	1	7	7.0	
Monk, lh	1	0	0.0	

OSU Totals	32	253	7.9
Opponents	16	114	7.1

KICKOFF RETURNS:	No.	Yds.	Avg.	TD
Rivera, rh	8	166	20.8	
Sinyard, rh	5	103	20.6	
Whittle, lh	5	65	13.0	
Hilliard, rh	2	29	14.5	
Gates, fb	1	23	23.0	
Kasso, lh-le	3	21	7.0	
Barnum, rh	1	10	10.0	

OSU Totals	25	417	16.7
Opponents	33	552	16.7

PUNTING:	No.	Yds.	Avg.	Blkd.
Russell, re	4	155	38.7	
Kasso, lh-le	28	888	31.7	
Baker, qb	22	658	29.5	1

OSU Totals	54	1701	31.5	1
Opponents	53	1862	35.1	1

RECEIVING:	No.	Yds.	TD
Kasso, lh-le	20	258	
Johnson, le	11	179	3
Whittle, lh	9	110	1
Seale, le	5	90	1
Jones, re	5	87	
Gates, fb	4	30	1
Monk, lh	3	52	
Rivera, rh	2	34	
Washburn, re	2	28	
Sinyard, rh	1	42	1
Neil, re	1	19	
Hilliard, rh	1	16	

INTERCEPTIONS:	No.	Yds.	TD
Rivera, rh	5	14	
Hilliard, rh	2	18	
Johnson, le	2	7	
Neil, re	1	9	
Monk, lh	1	0	
Sinyard, rh	1	0	
Whitehead, lg	1	0	
Whittle, lh	0	7	

OSU Totals	13	55
Oponents	8	71

MISCELLANEOUS:	OSU	OPP.
Total 1st downs	160	138
by rushing	112	81
by passing	4	49
by penalty	4	8
Penalties/yards lost	70/670	39/406
Fumbles/ball lost	24/15	34/21

SCORING:	TD	R	P	K	FG	TP
Whittle, lh	4		1-1			26
Williams, fb	4	1-0				24
Thomas, lh	3		2-2			22
Johnson, le	3		1-0			18
Richman, fb	2			3-1	1-1	16
Baker, qb	2					12
Gates, fb	2					12
Sinyard, rh	1	1-1				8
Seale, le	1					6
Doman, rg	1					6
Ankersen, fb				6-5	2-0	5
Rivera, rh		1-0	1-1			2
Kasso, lh-le			3-1			2
Horn, lh		1-1				2
Monk, lh		1-1				2
Watters, g-fb		1-1				2

OSU Totals	23	6-4	8-4	9-6	3-1	165
Opponents	19	3-1	7-3	9-9	4-0	137*

*Includes three safeties

THUMBNAIL SKETCHES

LEFT END

VERN BURKE, 6-4½, 188, jr. transfer from Bakersfield JC (Cal.). Showed great potential as receiver last spring. Rangy, with good hands. The Aaron Thomas type end, though probably not as fast. PAUL SEALE, 6-3, 196, sr. let. from Vancouver, B. C. Saw lots of service a year ago after transferring, and appears much improved now. MIKE YOUNGQUIST, 6-2, sr. let. from Salem. Earned award two years ago and did not letter last season. SCOTT MILLER, 6-4, 194, soph. from Kelso, Wash. One of standouts on freshman team last fall.

LEFT TACKLE

JIM FUNSTON, 6-0, 210, sr. let. from Medford. Valuable 2nd team tackle the past two years, ready for first-line duty now. Good hustler and tough. JOE BONILLA, 5-10, 201, jr. transfer from Bakersfield JC (Cal.). Showed lots of promise in spring. JEFF HARRIS, 6-1, 201, jr. let. from Aberdeen, Wash. Gained valuable experience as 3rd stringer a year ago, and could see a lot of duty now.

LEFT GUARD

GEORGE GNOSS, 6-1, 200, sr. let. from Novato, Cal. Conceivably could be best left guard at OSU since Tommy Prothro came here in 1955. Quick, tough and smart. RICK NELSON, 5-11, 196, soph. from Salem. Laid out of competition a year ago, and should be ready now. WARREN COLE, 6-1, 186, soph. from Stockton, Cal. Lacking in experience, but a good prospect and should help considerably.

CENTER

JOHN FARRELL, 6-0, 194, sr. let. from Sacramento, Cal. One of OSU's finest linemen, when healthy. Handicapped by injuries in past, but appears in fine shape now. DICK DE BISSCHOP, 6-2, 192, sr. let. from San Anselmo, Cal. Fine linebacker and plenty tough. Has the experience and savvy, and could start. DOUG SUCKLING, 6-2, 189, soph. from Vancouver, Wash. Looked good as freshman, and laid out last year.

RIGHT GUARD

ROSS CARIAGA, 5-9, 189, sr. let. from Conchella, Cal. A two-year regular who is destined for his best varsity season. Small, but quick and strong. RON DOMAN, 5-10, 189, jr. let. from Ontario, Ore. Younger brother of Jerry Doman, ex-OSU captain and now coaching aide at BYU. Pressing Cariaga closely for top job. AL FUNSTON, 5-9, 182, soph. from Medford. Fine prep athlete and good as freshman here. Needs only experience and will be real good.

RIGHT TACKLE

TOM HOLLEY, 6-1, 209, jr. reserve holdover from Burbank, Cal. Didn't letter last year, but moved up fast last spring and could be a god-send at a position weakened by heavy graduation losses. MIKE YOUNGQUIST, 6-2, 195, sr. let. from Salem, Ore. Switched from end third day of practice this fall. ENOCH JAMES, 5-10, 180, sr. let. from Los Angeles. Should be improved over a year ago.

THUMBNAIL SKETCHES

RIGHT END

JERRY NEIL, 6-2, 205, jr. let. from Sacramento, Cal. A fine all-around player, with a chance to become one of OSU's best all-time ends. Extremely strong. FRED JONES, 5-10, 181, sr. let. from Oroville, Cal. A regular much of last season. Small, but quick and effective. Caught five passes for 87 yards. DOUG McDOUGAL, 6-4, 211, soph. from Wilson of Portland. Great prep record and good as freshman here. Needs move experience.

QUARTERBACK

TERRY BAKER, 6-3, 191, sr. let. from Jefferson of Portland. Likely the best college quarterback in America. All-Coast tailback as sophomore, all-coast QB as junior. One of great athletes in west coast history. Has gained 2703 yards running and passing in two seasons, holds 14 all-time Beaver individual records. Left-handed passer, great runner and fine team leader. RICH BROOKS, 5-11, 172, sr. let. from Grass Valley, Cal. Fine defensive halfback, but also can get job done at QB when called upon. GORDON QUEEN, 6-1, 181, soph. from St. Mary's high of Berkeley, Cal. Led Rooks to impressive season last year and showed clearly he could be a great passer. Will improve fast as he gains experience.

LEFT HALF

LEROY WHITTLE, 6-1, 186, jr. let. from Berkeley, Cal. Probably fastest man on squad—once ran a :21-1 in the 220, his only attempt in track as a Beaver. Leading OSU rusher a year ago with 364 yards, a 4.5 average and three TD's. JOHN THOMAS, 6-2, jr. let. from Redlands, Cal. Big, strong runner who originally played end. Deceivably fast, and tough to bring down. First-baseman on baseball team. DAN ESPALIN, 5-7, 168, soph. from Wilmington, Cal. Not greatly impressive during freshman season, but awfully good in spring drills. May come fast.

RIGHT HALF

JIM SINYARD, 5-10, 168, jr. let. from Redding, Cal. A third-stringer who saw quite a lot of service in 1961. Averaged 4.9 per carry and strong in punt returns and kickoff returns. Plenty quick. DAN SIEG, 5-9, 167, soph. from Medford. Good defensive player, and fine attitude. Sure to see lots of action. DICK JONES, 5-8, 166, jr. transfer from Bakersfield JC. Good quickness, but needs experience. Tough for his size.

FULLBACK

BRUCE WILLIAMS, 6-0, 196, jr. let. from Auburn, Cal. Carried for 332 yards as sophomore and won starting job then. Strong, bull-type runner who gets that extra yardage with determination. TIM ANKERSEN, 5-10, 178, sr. let. from Buena Park, Cal. One of best defensive linebackers on squad, also handles much of the placekicking chores. DICK RUHL, 6-1, 204, jr. from Heppner. Fine linebacker and blocker, a tough runner. Eager.

TENTATIVE THREE-DEEPS OSU, 1962

(As of Sept. 5)

- LE—Vern Burke 188 Jr. Tr.
Paul Seale 196 Sr. Let.
Scott Miller 194, Soph.
- LT—Jim Funston 210 Sr. Let.
Joe Bonilla 210 Jr. Tr.
Jeff Harris 201 Jr. Let.
- LG—George Gness 200 Sr. Let.
Rick Nelson 196 Soph.
Warren Cole 186 Soph.
- C—John Farrell 194, Sr. Let.
Dick DeBisschop 192, Sr. Let.
Doug Suckling 189 Soph., or
Hoyt Keeney 194 Soph.
- RG—Ross Cariaga 189 Sr. Let.
Ron Doman 189 Jr. Let.
Al Funston 182 Soph.
- RT—Tom Holley 209 Jr.
Mike Youngquist 195, Sr. Let.
Enoch James 180 Sr. Let.
- RE—Jerry Neil 205 Jr. Let.
Fred Jones 181 Sr. Let.
Len Frketich 195 Soph.
- QB—Terry Baker 191 Sr. Let.
Rich Brooks 172 Sr. Let.
Gordon Queen 181 Soph.
- LH—Leroy Whittle 186 Jr. Let.
John Thomas 190 Jr. Let.
Dan Espalin 168 Soph.
- RH—Jim Sinyard 168 Jr. Let.
Dan Sieg 167 Soph.
Dick Jones 166 Sr. Tr.
- FB—Bruce Williams 196 Jr. Let.
Tim Ankersen 178 Sr. Let.
Rich Ruhl 204 Jr.

PRONUNCIATION GUIDE

- Avila—Ah - VEE - luh
Bonilla—Bo - KNEE - yuh
Cariaga—Care - ee - AH - guh
Doman—DOUGH - mun
GNOSS—NOSS
DeBisschop—Dee - BISH - up
DeFilippo—DEE - fuh - LIPPO
Espalin—ES - puh - lun
Frketich—FUR - kuh - tich
Funston—FUN - stun
Ruhl—RULE
Seale—SEAL
Sieg—SEEG
Sinyard—SIN - yurd
Prothro—PROW - throw
Zelinka—Zuh - LINK - uh
Gambold—GAMB - bold
Siegrist—SEE - grist
Barratt—BARRUTT

1961 Returning Lettermen (18)

(No. team played on last year in parenthesis)

Ends—Paul Seale (4), Fred Jones (1), Jerry Neil (3).

Tackles—Jim Funston (2), Jeff Harris (3).

Guards—George Gness (1), Ross Cariaga (1), Enoch James (3),
Ron Doman (4).

Centers—John Farrell (2), Dick DeBisschop (3).

Quarterbacks—Terry Baker (1), Rich Brooks (2).

Left Halfbacks—Leroy Whittle (1), John Thomas (3).

Right Halfbacks—Jim Sinyard (3).

Fullbacks—Tim Ankersen (1), Bruce Williams (2).

1961 Lettermen Lost (19)

Ends—Roger Johnson (2), Don Kasso (1), Skip Russell (2),
Herb Washburn (4), Dave Richman (3), Dick Hill
(3).

Tackles—Mike Kline (1), Neil Plumley (1), Denny Pieters (2),
Mike Dolby (2), Bill Whitehead, tackle (3).

Guards—Norby Keolanui (2), Mike Watters (4).

Centers—Marne Palmateer (1).

Quarterbacks—Bill Sullivan (3).

Left Halfbacks—Bill Monk (2).

Right Halfbacks—Hank Rivera (1), Gene Hilliard (2).

Fullbacks—Tom Gates (3).

BEAVER HONORS WON IN 1961

Terry Baker, quarterback—

All-Coast 1st team, AP

All-Coast 1st team, UPI

Most Valuable Player, OSU

*Cover Boy, Sports Illustrated

Outstanding Back, OSU (Radio

KPOJ award)

Roger Johnson, end—

All-Coast 2nd team, AP

Outstanding Lineman, OSU

(Radio KPOJ award)

Leroy Whittle, halfback—

Rookie of Year Award, OSU

Neil Plumley, tackle—

Most Improved Player OSU

(tied with Johnson)

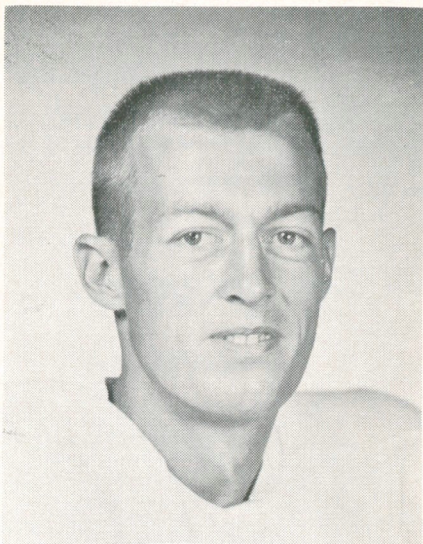
Gordon Queen, quarterback—

Outstanding Freshman Award, OSU

(*Baker was featured in Sports Illustrated as "The Best Athlete In College.")

TERRY BAKER

A Real All-American



A year ago, the magazine Sports Illustrated ran a color portrait on its cover of a young man referred to as "The Best Athlete In College."

Oregon State's Terry Baker has proved prior and since the magazine had the right man for its title. He possibly is America's No. 1 college football quarterback and appears destined to go down in history as perhaps the best the school ever has produced.

The story of Terry Baker begins with success and likely will end with success. An all-stater in football, basketball and baseball while at Jefferson high school, in addition to being an honor student, Terry decided on a Mechanical Engineering course at Oregon State University.

He was a unanimous all-coast halfback (tailback) in Coach Tommy Prothro's vaunted single-wing attack as a sophomore in 1960, running and passing his way to 1473 yards, still a school record. His 302 yards gained against Rose Bowl champion Washington that season is a feat not likely to be forgotten soon.

Then as a junior in 1961, Terry moved to quarterback where he again won all-coast first team honors as a t-formation football player. His yardage total read 1230 yards this time, leaving him a combined two-year total of 2703 yards. This is just 143 yards short of the OSU career mark held by Ken Carpenter, former Cleveland Browns star, and Carpenter had four varsity seasons to compile his record.

He was a regular starting guard on Oregon State's great 1962 basketball squad that won the Pacific Northwest NCAA championship with a 24-5 record. The Beavers lost to UCLA in the finals of the Western Regional NCAA tournament at Provo, and Baker won a spot on the all-star quint selected there.

If he had the necessary time it takes, Baker probably would

be a star pitcher on the baseball team, for he was a great one in high school. Obviously, his scholastic and athletic activities make him a busy man. Even so, he was elected president of his social fraternity, Phi Delta Theta, as a junior and served in that capacity all of the past school year.

Back to football again, Terry Baker holds 14 all-time individual Oregon State University records—ranging from passing to total offense. He was named the state of Oregon's outstanding athlete of the year at the Hayward banquet in Portland, placing ahead of Oregon's Steve Barnett and Mel Renfro and OSU's hoop great, Mel Counts.

Oregon State offers Terry Baker as its all-America quarterback candidate for 1962, using the oft-used political term—"he stands on his record."

And the record will get better as he goes along.

The Opponents

1. Iowa State

Sept. 22 at Portland
Coach—Clay Stapleton
Offensive System—T-formation
Nickname—Cyclones
Colors—Cardinal and Gold
Athletic Director—Gordon (Slim) Chalmers
Publicity Director—Harry Burrell
Enrollment—11,000
Location—Ames, Iowa
Stadium—Clyde Williams Field, Capacity 23,076
Conference—Big Eight
1961 Record—Won 5, Lost 5

PAST SCORES:

(Oregon State and Iowa State have never met previously in football competition)

2. Iowa

Sept. 29 at Iowa City
Coach—Jerry Burns
Offensive System—Winged T
Nickname—Hawkeyes
Colors—Balck and Gold
Athletic Director—Forest Evashevski
Publicity Director—Eric Wilson
Enrollment—11,000
Location—Iowa City, Iowa
Stadium—Iowa Stadium, Capacity 60,000
Conference—Big Ten
1961 Record—Won 5, Lost 4

PAST SCORES:

1956—Iowa, 14-13

1956—Iowa, 35-19 (Rose Bowl game of Jan. 1, 1957)

1960—Iowa, 22-12

Total games won—Iowa 3, OSU none

Total points scored—Iowa 71, OSU 44

3. Stanford

Oct. 6 at Palo Alto

Coach—Jack Curtice

Offensive System—T-Formation

Nickname—Indians

Colors—Cardinal and White

Athletic Director—Alfred R. Masters

Publicity Director—Don Liebendorfer

Enrollment—8833

Location—Palo Alto, California

Stadium—Stanford, Capacity 90,000

Conference—Big Six

1961 Record—Won 4, Lost 6

PAST SCORES:

1919—Stanford, 14-6	1942—Stanford, 49-13
1921—Stanford, 14-7	1946—Tie, 0-0
1922—Stanford, 6-0	1947—Oregon State, 13-7
1925—Stanford, 26-10	1949—Stanford, 27-7
1927—Stanford, 20-6	1950—Stanford, 21-0
1929—Stanford, 40-7	1951—Stanford, 35-14
1930—Stanford, 13-7	1952—Stanford, 41-28
1931—Stanford, 25-7	1953—Stanford, 21-0
1932—Stanford, 27-0	1955—Oregon State, 10-0
1934—Stanford, 17-0	1956—Oregon State, 20-19
1936—Stanford, 20-14	1957—Oregon State, 24-14
1937—Tie, 0-0	1958—Oregon State, 24-16
1938—Oregon State, 6-0	1959—Stanford, 39-22
1939—Oregon State, 12-0	1960—Oregon State, 25-21
1940—Stanford, 28-14	1961—Stanford, 35-0
1941—Oregon State, 10-0	

Total Games Won—Stanford 20, OSU 9, Ties 2

Total Points Scored—Stanford 595, OSU 306

4 Washington

Oct. 13 at Portland

Coach—Jim Owens

Offensive System—Multiple-T

Nickname—Huskies

Colors—Purple and Gold

Athletic Director—Jim Owens

Publicity Director—Gordy Green

Enrollment—17,000

Location—Seattle, Washington

Stadium—WU Stadium, Capacity 55,500

Conference—Big Six

1961 Record—Won 5, Lost 4, Tied 1

PAST SCORES:

1897—Oregon State, 16-0	1937—Oregon State, 6-3
1902—Washington, 16-6	1938—Oregon State, 13-6
1903—Washington, 5-0	1939—Oregon State, 13-7
1904—Oregon State, 26-5	1940—Washington, 19-0
1905—Oregon State, 18-0	1941—Oregon State, 9-6
1906—Tie, 0-0	1942—Washington, 13-0
1908—Washington, 32-0	1943—Washington, 13-0
1909—Washington, 21-0	1946—Oregon State, 21-12
1910—Washington, 22-0	1947—Oregon State, 14-7
1911—Washington, 34-0	1948—Tie, 14-14
1912—Washington, 9-3	1949—Oregon State, 7-3
1913—Washington, 47-0	1950—Washington, 35-6
1914—Tie, 0-0	1951—Oregon State, 40-14
1916—Washington, 35-0	1952—Washington, 38-13
1917—Tie, 0-0	1953—Washington, 28-0
1918—Washington, 6-0	1954—Washington, 17-7
1920—Oregon State, 3-0	1955—Oregon State, 13-7
1921—Oregon State, 24-0	1956—Oregon State, 28-20
1922—Washington, 14-3	1957—Washington, 19-6
1923—Washington, 14-0	1958—Oregon State, 14-12
1924—Washington, 6-3	1959—Washington, 13-6
1928—Oregon State, 29-0	1960—Washington, 30-29
1934—Washington, 14-7	1961—Oregon State, 3-0
1936—Washington, 19-7	

Total Games Won—Washington 25, OSU 19, Ties 4

Total Points Scored—Washington 741, OSU 413

5. University of Pacific

Oct. 20 at Corvallis

Coach—John Rohde

Offensive System—T-formation

Nickname—Tigers

Colors—Orange and Black

Athletic Director—Dr. Paul Stagg

Publicity Director—Bill Tunnell

Enrollment—2,136

Location—Stockton, Calif.

Stadium—Pacific Memorial, Capacity 35,975

Conference—West Coast Athletic Conf.

1961 Record—Won 5, Lost 4

PAST SCORES:

1955—Pacific, 13-7

Total Games Won—Pacific 1, OSU none

Total points scored—Pacific 13, OSU 7

6. West Virginia

Oct. 27 at Portland

Coach—Gene Corum

Offensive system—T-formation

Nickname—Mountaineers

Colors—Old Gold and Blue

Athletic Director—Robert "Red" Brown

Publicity Director—Edgar Barrett

Enrollment—7,000

Location—Morgantown, W. Va.
Stadium—Mountaineer Field, Capacity 34,800
Conference—Southeastern
1961 Record—Won 4, Lost 6

PAST SCORES:

1930—Oregon State, 12-0
Total Games Won—OSU 1, West Virginia None
Total Points Scored—OSU 12, West Virginia 0

7. Washington State

Nov. 3 at Pullman

Coach—Jim Sutherland

Offensive System—T-Formation

Nickname—Cougars

Colors—Crimson and Grey

Athletic Director—Stan Bates

Publicity Director—Dick Fry

Enrollment—6,575

Location—Pullman, Washington

Stadium—Rogers Field, Capacity 23,500

Conference—Big Six

1961 Record—Won 3, Lost 7

PAST SCORES:

1903—Oregon State, 6-0	1936—Oregon State, 16-6
1906—Oregon State, 29-0	1937—Wash. State, 9-0
1910—Oregon State, 9-3	1938—Oregon State, 7-6
1911—Oregon State, 6-0	1939—Oregon State, 13-0
1912—Wash. State, 10-9	1940—Oregon State, 21-0
1913—Oregon State, 10-2	1941—Wash. State, 7-0
1914—Oregon State, 7-0	1942—Wash. State, 26-13
1915—Wash. State, 29-0	1945—Wash State, 33-0
1916—Oregon State, 13-10	1945—Wash. State, 13-6
1917—Wash. State, 6-0	1946—Oregon State, 13-12
1919—Oregon State, 6-0	1947—Wash. State, 14-13
1920—Wash. State, 28-0	1948—Tie, 26-26
1921—Wash. State, 7-3	1949—Oregon State, 35-6
1922—Oregon State, 16-0	1950—Wash. State, 21-7
1923—Tie, 3-3	1951—Wash. State, 26-13
1924—Oregon State, 14-13	1952—Wash. State, 33-20
1927—Oregon State, 13-6	1953—Oregon State, 7-0
1928—Wash. State, 9-7	1954—Wash. State, 34-6
1929—Wash. State, 9-0	1955—Oregon State, 14-6
1930—Wash. State, 14-7	1956—Oregon State, 21-0
1931—Wash. State, 7-6	1957—Oregon State, 39-25
1932—Wash. State, 7-6	1958—Wash. State, 7-0
1933—Oregon State, 2-0	1959—Wash. State, 14-0
1934—Wash. State, 31-0	1960—Oregon State, 20-10
1935—Wash. State, 26-13	1961—Oregon State, 14-6

Total Games Won—OSU 24, WSU 24, Ties 2
Total Points Scored—WSU 558, OSU 509

8. Idaho

Nov. 10 at Moscow

Coach—Dee Andros

Offensive System—T-formation

Nickname—Vandals

Colors—Silver and Gold

Athletic Director—Skip Stahley

Publicity Director—Tom Hartley

Enrollment—4000

Location—Moscow, Idaho

Stadium—Neale, Capacity 17,500

Conference—None

1961 Record—Won 2, Lost 7

PAST SCORES:

1913—Oregon State, 3-0

1914—Oregon State, 26-0

1915—Oregon State, 40-0

1916—Oregon State, 26-0

1917—Oregon State, 26-6

1923—Idaho, 7-0

1924—Idaho, 22-0

1925—Oregon State, 16-7

1926—Oregon State, 3-0

1927—Idaho, 12-7

1929—Oregon State, 27-0

1935—Oregon State, 13-0

1937—Idaho, 7-6

1938—Idaho, 13-0

1939—Oregon State, 7-6

1940—Oregon State, 41-0

1941—Oregon State, 33-0

1942—Oregon State, 32-0

1945—Oregon State, 34-0

1946—Oregon State, 34-0

1947—Oregon State, 33-6

1948—Oregon State, 27-12

1949—Oregon State, 35-25

1950—Oregon State, 34-19

1951—Oregon State, 34-6

1952—Idaho, 27-6

1953—Oregon State, 19-0

1954—Oregon State, 13-0

1955—Oregon State, 33-14

1956—Oregon State, 14-10

1957—Oregon State, 20-0

1958—Oregon State, 20-6

1959—Oregon State, 66-18

1960—Oregon State, 28-8

1961—Oregon State, 44-6

Total Games Won—OSU 29, Idaho 6

Total Points Scored—OSU 801, Idaho 227

9. Colorado State

Nov. 17 at Corvallis (Homecoming)

Coach—Mike Lude

Offensive System—Winged-T

Nickname—Aggies, Rams

Colors—Cardinal and Gold

Athletic Director—Robert L. "Bob" Davis

Publicity Director—Dick Smelser

Enrollment—7,000

Location—Fort Collins, Colo.

Stadium—Colorado Field, Capacity 14,000

Conference—None

1961 Record—Won 0, Lost 10

PAST SCORES:

(Oregon State and Colorado State have never met previously in football competition)

10. Oregon

Nov. 24 at Corvallis

Coach—Len Casanova

Offensive System—T-formation

Nickname—Webfoots, Ducks

Colors—Green and Yellow

Athletic Director—Leo Harris

Publicity Director—Hal Childs

Enrollment—9,000

Location—Eugene, Oregon

Stadium—Hayward field, Capacity 23,500

Conference—None

1961 Record—Won 4, Lost 6

PAST SCORES:

1894—Oregon State, 16-0	1929—Oregon, 16-0
1895—Oregon, 44-0	1930—Oregon State, 15-0
1896—Oregon, 2-0	1931—Tie, 0-0
1896—Oregon, 8-4	1932—Oregon, 12-6
1897—Oregon State, 26-8	1933—Oregon, 13-3
1898—Oregon, 38-0	1934—Oregon, 9-6
1899—Oregon, 38-0	1935—Oregon, 13-0
1902—Tie, 0-0	1936—Oregon State, 18-0
1903—Oregon, 5-0	1937—Oregon State, 14-0
1904—Oregon, 6-5	1938—Oregon State, 14-0
1905—Oregon, 6-0	1939—Oregon State, 19-14
1906—Tie, 0-0	1940—Oregon, 20-0
1907—Oregon State, 4-0	1941—Oregon State, 12-7
1908—Oregon, 8-0	1942—Oregon State, 39-2
1909—Oregon, 12-0	1945—Oregon State, 13-12
1910—Oregon, 12-0	1945—Oregon State, 19-6
1912—Oregon, 3-0	1946—Oregon State, 13-0
1913—Tie, 10-10	1947—Oregon, 14-6
1914—Tie, 3-3	1948—Oregon, 10-0
1915—Oregon, 9-0	1949—Oregon State, 20-10
1916—Oregon, 27-0	1950—Oregon State, 14-2
1917—Oregon State, 14-7	1951—Oregon State, 14-7
1918—Oregon, 13-6	1952—Oregon State, 22-19
1920—Tie, 0-0	1953—Oregon State, 7-0
1921—Tie, 0-0	1954—Oregon, 33-14
1922—Oregon, 10-0	1955—Oregon, 28-0
1923—Oregon State, 6-0	1956—Tie, 14-14
1924—Oregon, 7-3	1957—Oregon State, 10-7
1925—Oregon State, 24-13	1958—Oregon, 20-0
1926—Oregon State, 16-0	1959—Oregon State, 15-7
1927—Oregon State, 21-7	1960—Tie, 14-14
1928—Oregon, 12-0	1961—Oregon State, 6-2

Total Games Won—Oregon 30, OSU 26, Ties 9

Total Points Scored—Oregon 619, OSU 507

All-Time OSU Football Scores 1893 to Present

1893

OSC 62 Albany college 0
 OSC 36 Monmouth college 22
 OSC 28 Monmouth college 0
 OSC 6 Multnomah A.C. Jrs. 0
 OSC 12 Portland U. 26

1894

OSC 16 Oregon 0
 OSC 0 Portland U. 22
 OSC 36 Monmouth college 6

1895

OSC 0 Forest Grove 0
 OSC 6 Willamette 36
 OSC 0 Oregon 44

1896

OSC 0 Oregon 2
 OSC 8 Oregon 12

1897

OSC 26 Oregon 8
 OSC 16 Washington 0

1898

OSC 25 Albany college 6
 OSC 5 Forest Grove 5
 OSC 6 Chemawa Indians 29
 OSC 0 Oregon 38

1899

OSC 10 Willamette 0
 OSC 47 Albany college 0
 OSC 0 Multnomah A.C. 5
 OSC 0 Oregon 38
 OSC 18 Chemawa Indians 17

1900

No football—athletics
 prohibited by regents

1901

No varsity games—2nd
 team played only

1902

OSC 67 Willamette 0
 OSC 6 Washington 16
 OSC 0 Oregon 0
 OSC 21 Willamette 0
 OSC 33 McMinnville 0
 OSC 31 Pacific 0

1903

OSC 0 Washington 5
 OSC 0 Multnomah A.C. 16
 OSC 0 Albany college 6
 OSC 0 Pacific 0
 OSC 6 Wash. State 0
 OSC 0 Oregon 5
 OSC 15 Nevada 0

1904

OSC 11 Alumni 0
 OSC 22 Portland Medicos 0
 OSC 26 Washington 5
 OSC 45 Utah Aggies 0
 OSC 5 Oregon 6
 OSC 10 Multnomah A.C. 11

1905

OSC 10 Alumni 6
 OSC 18 Chemawa 0
 OSC 58 Whitman 0
 OSC 29 Wash. State 0
 OSC 0 California 10
 OSC 0 Oregon 6
 OSC 28 Willamette 0
 OSC 18 Washington 0
 OSC 5 Multnomah AC 6

1906

OSC 24 Albany A.C. 0
 OSC 16 Alumni 0
 OSC 0 Washington 0
 OSC 28 Pacific 0
 OSC 9 Columbia A.C. 0
 OSC 0 Oregon 0
 OSC 0 Willamette 4

1907

OSC 26 Astoria A.C. 0
 OSC 6 Whitman 0
 OSC 49 Pacific 0
 OSC 4 Oregon 0
 OSC 42 Willamette 0
 OSC 10 St. Vincent college 0

1908

OSC 0 Alumni 0
 OSC 26 Puget Sound 0
 OSC 10 Columbia A.C. 0
 OSC 28 Willamette 0
 OSC 9 Whitman 0
 OSC 0 Oregon 8
 OSC 0 Washington 32
 OSC 10 Multnomah A.C. 11

1909

OSC 0 Alumni 0
 OSC 21 Pacific 0
 OSC 12 Catholic YMCA 0
 OSC 10 Whitman 6
 OSC 0 Washington 21
 OSC 0 Oregon 12
 OSC 11 Multnomah A.C. 8

1910

OSC 0 Alumni 0
 OSC 9 Willamette 6
 OSC 9 Wash. State 3
 OSC 9 Whitman 0
 OSC 0 Oregon 12
 OSC 0 Washington 22

1911

OSC 2 Alumni 3
 OSC 26 Pacific 0
 OSC 75 Chemawa Indians 6
 OSC 0 Washington 34
 OSC 6 Wash. State 0
 OSC 5 Willamette 3
 OSC 5 Whitman 3

1912

OSC 2 Alumni 0
 OSC 0 Multnomah A.C. 9
 OSC 9 Wash. State 10
 OSC 3 Washington 9
 OSC 20 Whitman 3
 OSC 0 Oregon 3
 OSC 23 Occidental 6

1913

OSC 0 Alumni 0
 OSC 0 Multnomah A.C. 6
 OSC 7 Multnomah A.C. 7
 OSC 29 Whitman 3
 OSC 0 Washington 47
 OSC 10 Oregon 10
 OSC 10 Wash. State 2
 OSC 3 Idaho 0

1914

OSC 12 Alumni 0
 OSC 12 Rooks 0
 OSC 10 Multnomah A.C. 6
 OSC 64 Willamette 0
 OSC 7 Wash. State 0
 OSC 0 Washington 0
 OSC 26 Idaho 0
 OSC 3 Oregon 3
 OSC 38 Southern Cal 6

1915**Beginning of
Pacific Coast Conference**

OSC 3 Alumni 0
 OSC 69 Willamette 0
 OSC 34 Whitman 7
 OSC 0 Wash. State 29
 OSC 20 Michigan Aggies 0
 OSC 40 Idaho 0
 OSC 0 Oregon 9
 OSC 0 Syracuse 28

1916

OSC 7 Alumni 13
 OSC 0 Multnomah A.C. 3
 OSC 26 Idaho 0
 OSC 13 Wash. State 10
 OSC 7 Nebraska 17
 OSC 23 Whitman 0
 OSC 0 Washington 35
 OSC 0 Oregon 27
 OSC 16 Southern Cal 7

1917

OSC 34 Field Hospital Corps of
 Vancouver Barracks 0
 OSC 26 Idaho 6
 OSC 3 California 14
 OSC 6 Multnomah A.C. 0
 OSC 0 Wash. State 6
 OSC 0 Washington 0
 OSC 14 Oregon 7

1918

OSC 7 Vancouver Barracks 0
 OSC 6 Camp Lewis 21
 OSC 14 Standifer
 Shipbuilders 0
 OSC 6 Oregon 13
 OSC 0 Washington 6
 OSC 0 Multnomah A.C. 6

1919

OSC 0 Alumni 0
 OSC 21 Rooks 0
 OSC 46 Pacific 6
 OSC 6 Stanford 14
 OSC 14 Canifornia 21
 OSC 0 Multnomah A.C. 14
 OSC 0 Oregon 9
 OSC 6 Wash. State 0
 OSC 50 Gonzaga 0

1920

OSC 0 Multnomah A.C. 0
 OSC 3 Washington 0
 OSC 7 California 17
 OSC 0 Wash. State 28
 OSC 0 Oregon 0
 OSC 10 Multnomah A.C. 7

1921

OSC 68 Rooks 7
 OSC 68 Chemawa Indians 0
 OSC 7 Multnomah A.C. 7
 OSC 54 Willamette 0
 OSC 24 Washington 0
 OSC 7 Stanford 14
 OSC 3 Wash. State 7
 OSC 0 Oregon 0
 OSC 0 Southern Cal 7

1922

OSC 22 Alumni 6
 OSC 3 Pacific 0
 OSC 3 Washington 14
 OSC 0 Stanford 6
 OSC 0 Multnomah A.C. 6
 OSC 0 Oregon 10
 OSC 16 Wash. State 0

1923

OSC 12 Pacific 0
 OSC 0 Multnomah A.C. 0
 OSC 13 Alumni 0

OSC 0 California 26
 OSC 0 Washington 14
 OSC 0 Idaho 7
 OSC 3 Wash. State 3
 OSC 6 Oregon 0
 OSC 12 Multnomah A.C. 0
 OSC 9 Hawaiian All-Stars 14
 OSC 0 U. of Hawaii 7

1924

OSC 41 Whitman 0
 OSC 7 Multnomah A.C. 6
 OSC 3 Southern Cal 17
 OSC 3 Washington 6
 OSC 0 Idaho 22
 OSC 14 Wash. State 13
 OSC 3 Oregon 7
 OSC 0 Nebraska 14

1925

OSC 51 Willamette 0
 OSC 22 Gonzaga 0
 OSC 62 Whitman 0
 OSC 10 Stanford 26
 OSC 27 Montana 7
 OSC 56 Pacific 0
 OSC 24 Oregon 13
 OSC 16 Idaho 7
 OSC 0 Southern Cal 28

1926

OSC 67 Multnomah A.C. 0
 OSC 49 Montana 0
 OSC 23 Gonzaga 6
 OSC 27 California 7
 OSC 3 Idaho 0
 OSC 7 Southern Cal 17
 OSC 16 Oregon 0
 OSC 29 Marquette 0

1927

OSC 25 California Aggies 6
 OSC 12 Southern Cal 13
 OSC 6 Stanford 20
 OSC 13 Wash. State 6
 OSC 21 Oregon 7
 OSC 7 Idaho 12
 OSC 14 Carnegie Tech 14

1928

OSC 14 California Aggies 0
 OSC 0 Southern Cal 19
 OSC 41 Columbia U. 0
 OSC 46 Pacific 0
 OSC 7 Wash. State 9
 OSC 29 Washington 0
 OSC 44 Montana 0
 OSC 0 Oregon 12
 OSC 25 New York Univ. 13

1929

OSC 37 Willamette 6

OSC 19 California Aggies 0
 OSC 7 Southern Cal 21
 OSC 71 Columbia U. 7
 OSC 7 Stanford 40
 OSC 27 Idaho 0
 OSC 0 Wash. State 9
 OSC 0 Oregon 16
 OSC 14 Detroit U. 7

1930

OSC 48 Willamette 0
 OSC 16 Gonzaga 6
 OSC 7 Southern Cal 27
 OSC 20 California Aggies 0
 OSC 7 Stanford 13
 OSC 57 Pacific 0
 OSC 7 Wash. State 14
 OSC 15 Oregon 0
 OSC 19 UCLA 0
 OSC 12 West Virginia 0

1931

OSC 76 Willamette 0
 OSC 16 Colorado 0
 OSC 0 Southern Cal 30
 OSC 25 Linfield 0
 OSC 7 Stanford 25
 OSC 37 Oregon Normal 0
 OSC 6 Wash. State 7
 OSC 19 Montana 0
 OSC 0 Oregon 0
 OSC 12 Utah 0

1932

OSC 19 Gonzaga 16
 OSC 32 Willamette 0
 OSC 0 Stanford 27
 OSC 0 Southern Cal 10
 OSC 6 Wash. State 7
 OSC 20 West Coast Army 9
 OSC 6 Oregon 12
 OSC 35 Montana 6
 OSC 6 Fordham 8
 OSC 6 Detroit U. 14

1933

OSC 21 Ashland Normal 0
 OSC 21 Willamette 0
 OSC 20 Montana 0
 OSC 0 Gonzaga 0
 OSC 12 San Francisco U. 7
 OSC 0 Southern Cal 0
 OSC 2 Wash. State 0
 OSC 3 Oregon 13
 OSC 9 Fordham 6
 OSC 0 Nebraska 22

1934

OSC 13 Willamette 0
 OSC 19 Pacific 0
 OSC 0 San Francisco U. 10
 OSC 0 Stanford 17

OSC 39 Columbia U. 12
OSC 6 Southern Cal 6
OSC 0 Wash. State 31
OSC 7 Washington 14
OSC 6 Oregon 9
OSC 7 Montana 7
OSC 7 UCLA 25

1935

OSC 31 Linfield 0
OSC 26 Willamette 0
OSC 7 UCLA 20
OSC 13 Southern Cal 7
OSC 33 Gonzaga 6
OSC 13 Wash. State 26
OSC 19 Portland U. 2
OSC 0 Oregon 13
OSC 13 Idaho 0
OSC 0 Montana 0
OSC 20 Nebraska 26

1936

OSC 7 Southern Cal 38
OSC 13 Willamette 0
OSC 0 California 7
OSC 7 Washington 19
OSC 13 UCLA 22
OSC 14 Montana 7
OSC 16 Wash. State 6
OSC 14 Stanford 20
OSC 18 Oregon 0
OSC 14 Nebraska 32

1937

OSC 6 Idaho 7
OSC 6 California 24
OSC 6 Washington 3
OSC 7 UCLA 7
OSC 14 Oregon 0
OSC 0 Stanford 0
OSC 20 Willamette 0
OSC 12 Southern Cal 12
OSC 0 Wash. State 7

1938

OSC 0 Idaho 13
OSC 0 USC 7
OSC 19 Portland U. 0
OSC 13 Washington 6
OSC 7 Wash. State 6
OSC 7 California 13
OSC 6 Stanford 0
OSC 14 Oregon 0
OSC 6 UCLA 6

1939

OSC 12 Stanford 0
OSC 7 Idaho 6
OSC 14 Portland U. 12
OSC 13 Washington 7
OSC 13 Wash. State 0
OSC 7 USC 19

OSC 19 Oregon 14
OSC 21 California 0
OSC 13 UCLA 13
OSC 28 Hawaiian All-Stars 0
OSC 39 U. of Hawaii 6

1940

OSC 41 Idaho 0
OSC 0 USC 0
OSC 26 Portland U. 0
OSC 0 Washington 19
OSC 7 UCLA 0
OSC 19 California 13
OSC 21 Wash. State 0
OSC 14 Stanford 28
OSC 0 Oregon 20

1941

OSC 7 USC 13
OSC 9 Washington 6
OSC 10 Stanford 0
OSC 0 Wash. State 7
OSC 33 Idaho 0
OSC 19 UCLA 0
OSC 6 California 0
OSC 27 Montana 0
OSC 12 Oregon 7
OSC 20 Duke 16
(Rose Bowl)

1942

OSC 32 Idaho 0
OSC 13 California 8
OSC 7 UCLA 30
OSC 0 Santa Clara 7
OSC 13 Wash. State 26
OSC 0 Washington 13
OSC 33 Montana 0
OSC 13 Stanford 49
OSC 39 Oregon 2
OSC 7 Michigan State 7

1945

OSC 14 Camp Beale 14
OSC 0 Wash. State 33
OSC 19 Oregon 6
OSC 0 Washington 13
OSC 34 Idaho 0
OSC 7 Washington 6
OSC 6 Wash. State 13
OSC 7 USC 34
OSC 13 Oregon 12

1946

OSC 7 UCLA 50
OSC 35 Portland U. 0
OSC 6 USC 0
OSC 13 Wash. State 12
OSC 0 Stanford 0

OSC 34 Idaho 0
OSC 28 California 7
OSC 13 Oregon 0
OSC 21 Washington 12

1947

OSC 6 Utah 7
OSC 14 Washington 7
OSC 33 Idaho 6
OSC 6 USC 48
OSC 46 Portland U. 0
OSC 13 Stanford 7
OSC 7 UCLA 27
OSC 13 Wash. State 14
OSC 6 Oregon 14
OSC 27 Nebraska 6

1948

OSC 27 Idaho 12
OSC 6 USC 21
OSC 14 Washington 14
OSC 32 Portland U. 6
OSC 0 California 42
OSC 28 UCLA 0
OSC 21 Michigan State 46
OSC 26 Wash. State 26
OSC 20 Utah 20
OSC 0 Oregon 10
OSC 28 Nebraska 13
OSC 47 U. of Hawaii 27
(Pineapple Bowl)

1949

OSC 13 UCLA 35
OSC 27 Utah 7
OSC 0 California 41
OSC 7 Washington 3
OSC 63 Montana 14
OSC 7 Stanford 27
OSC 35 Wash. State 6
OSC 35 Idaho 25
OSC 25 Michigan State 20
OSC 20 Oregon 10

1950

OSC 13 Michigan State 38
OSC 0 Stanford 21
OSC 6 Washington 35
OSC 0 California 27
OSC 20 Montana 0
OSC 13 UCLA 20
OSC 34 Idaho 19
OSC 7 Wash. State 21
OSC 14 Oregon 2

1951

OSC 0 Michigan State 6
OSC 61 Utah 28
OSC 34 Idaho 6
OSC 14 USC 16
OSC 13 Wash. State 26
OSC 14 California 35
OSC 40 Washington 14
OSC 0 UCLA 7
OSC 14 Stanford 35
OSC 14 Oregon 7

1952

OSC 14 Utah 7
OSC 14 Michigan State 17
OSC 28 Stanford 41
OSC 6 USC 28
OSC 20 Wash. State 33
OSC 13 Washington 38
OSC 0 UCLA 57
OSC 6 Idaho 27
OSC 22 Oregon 19

1953

OSC 0 UCLA 41
OSC 0 California 26
OSC 0 Washington 28
OSC 0 Stanford 21
OSC 0 USC 37
OSC 19 Idaho 0
OSC 6 Michigan State 34
OSC 7 Wash. State 0
OSC 7 Oregon 0

1954

OSC 13 Idaho 0
OSC 7 Washington 17
OSC 6 Wash. State 34
OSC 7 Nebraska 27
OSC 0 UCLA 61
OSC 0 USC 34
OSC 6 Minnesota 44
OSC 7 California 46
OSC 14 Oregon 33

1955

OSC 33 Brigham Young 0
OSC 10 Stanford 0
OSC 0 UCLA 38
OSC 7 Coll. of Pac. 13
OSC 14 Wash. State 6
OSC 13 Washington 7
OSC 33 Idaho 14
OSC 16 California 14
OSC 0 Oregon 28

1957

1956

OSC 19 Missouri 13
 OSC 13 USC 21
 OSC 13 Iowa 14
 OSC 21 California 13
 OSC 21 WSC 0
 OSC 21 UCLA 7
 OSC 28 Washington 20
 OSC 20 Stanford 19
 OSC 14 Idaho 10
 OSC 14 Oregon 14
 OSC 19 Iowa 35
 (Rose Bowl)

OSC 20 USC 0
 OSC 34 Kansas 6
 OSC 22 Northwestern 13
 OSC 20 Idaho 0
 OSC 7 UCLA 26
 OSC 6 Washington 19
 OSC 39 WSC 25
 OSC 21 California 19
 OSC 24 Stanford 14
 OSC 10 Oregon 7

1958

OSC 0 USC 21
 OSC 12 Kansas 0
 OSC 14 UCLA 0
 OSC 0 Wyoming 28
 OSC 20 Idaho 6
 OSC 14 Washington 12
 OSC 14 California 8
 OSC 0 WSC 7
 OSC 24 Stanford 16
 OSC 0 Oregon 20

1959

OSC 6 USC 27
 OSC 14 Texas Tech 15
 OSC 6 Nebraska 7
 OSC 7 Michigan 15
 OSC 66 Idaho 18
 OSC 24 California 20
 OSC 0 WSU 14
 OSC 6 Washington 13
 OSC 22 Stanford 39
 OSC 15 Oregon 7

1960

OSU 14 USC 0
 OSU 12 Iowa 22
 OSU 29 Houston 20
 OSU 20 Indiana 6
 OSU 28 Idaho 6
 OSU 29 Washington 30
 OSU 6 California 14
 OSU 20 WSU 10
 OSU 25 Stanford 21
 OSU 14 Oregon 14

1961

OSC 8 Syracuse 19
 OSU 0 Stanford 34
 OSU 20 Wisconsin 23
 OSU 44 Idaho 6
 OSU 23 Arizona State 24
 OSU 14 WSU 6
 OSU 3 Washington 0
 OSU 35 BYU 0
 OSU 6 Oregon 2
 OSU 12 Houston 23

"Voice of the OSU Beavers"

BOB BLACKBURN



The 1962 Oregon State University football network will have at least 30 stations, establishing it as the largest collegiate sports network in western America. Sponsors are the Union Oil Company of California over the full 30-stations and the Greater Portland Area Rambler Dealers over a special 7-station network in the Portland area.

An added new network sponsor on all 30 stations is the Centennial Life Insurance Company of Oregon, who will sponsor a five-minute

OSU Football Forecast immediately preceding all games.

Play-by-play sportscaster is Bob Blackburn, 37-year old freelancer from Portland who has been broadcasting football and sports for 18 years. He has won the award "Sportscaster Of The Year" in the state of Oregon for all three years of its existence, in 1959, 1960 and 1961. This honor came through the National Sportswriters and Sportscasters association, by a vote of writers and casters in Oregon.

Blackburn has broadcast major college football and basketball on the Pacific Coast for 16 years, has been play-by-play announcer for the Portland Beavers in the Pacific Coast baseball league for 13 years. He also broadcasts Portland Buckaroos Ice Hockey games. Blackburn, as a free-lance sportscaster, is head of the Oregon State Sports Network, 9757 S. W. Arborcrest Way, Portland.

OSU SPORTS NETWORK, 1962 Football

KPOJ, Portland
KFLY, Corvallis
KGAY, Salem
KGAL, Lebanon
KORE, Eugene
KUIK, Hillsboro
KMCM, McMinnville
KROW, Dallas
KOHl, St. Helens
KQEN, Roseburg
KGAI, Grants Pass
KYJC, Medford
KFLW, Klamath Falls
KWRO, Coquille
KOOS, Coos Bay

KNPT, Newport
KBCH, Oceanlake
KTIL, Tillamook
KAST, Astoria
KLOG, Kelso, Wash.
KIHR, Hood River
KODL, The Dalles
KBND, Bend
KPRB, Redmond
KRCO, Prineville
KKID, Pendleton
KLBM, La Grande
KBKR, Baker
KSRV, Ontario
KQIK, Lakeview

OREGON STATE UNIVERSITY LIBRARIES



12 0141186839



OSU Coaching Staff, from left to right: Ron Siegrist, asst. coach; Jerry Long, asst. coach; Bob Watson, senior asst.; Tommy Prothro, head coach; Bob Gambold, asst. coach; Bob McKittrick, asst. coach; and Tiger Zelinka, asst. coach.