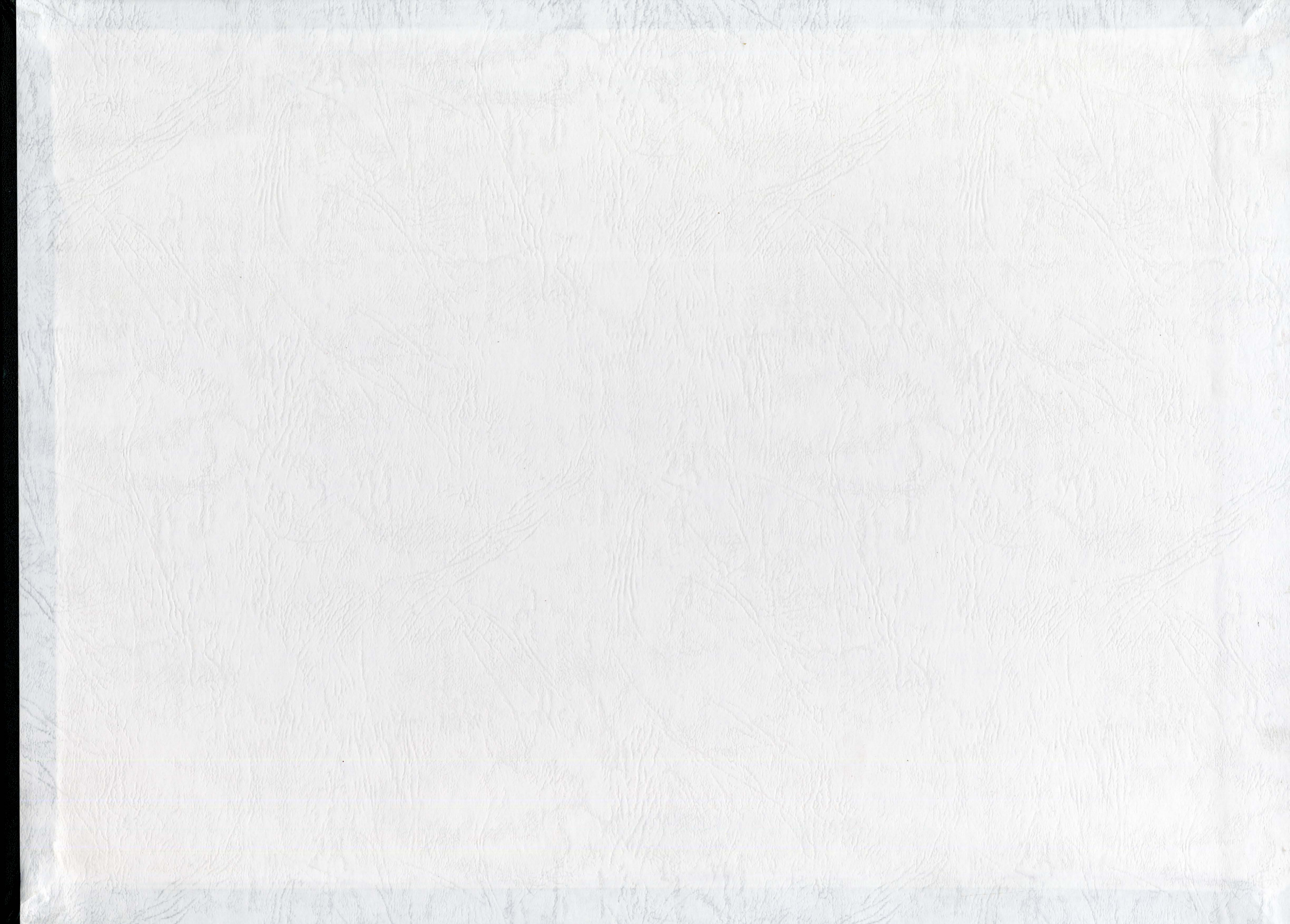


ARRC

20'01-20'02

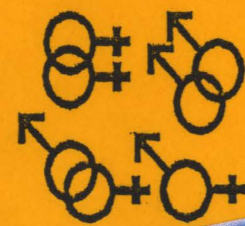






(st) mission statement 9001-2002

# Queer Resource Center



Oregon State University's newest resource for the, lesbian, gay, bisexual, transgender, queer, questioning, intersex and ally community!

The OSU Queer Resource Center provides programs and support services for lesbian, gay, bisexual, transgender, queer/questioning, intersex and allies of the OSU community. The QRC affirms LGBTQQI identities and lives, and provides education, outreach, program support, consultation, community development, visibility and advocacy. The QRC is a safe space for all members of our community to explore aspects of sexual orientation and gender issues in an open and non-judgmental atmosphere.

The Queer Resource Center is located in the Women's Center (Benton Annex) and you may contact the QRC at 737-9161 or call Danette Gillespie, Diversity Development Coordinator, at 737-6341 for information on how you can get involved!!

## Queer Resource Center Staff Manual

Oregon State University  
Diversity Development Office

2001-2002

Danette Gillespie  
+ Christa

**RIGHTS  
OREGON**

### Position Announcement

#### QUEER RESOURCE CENTER COORDINATOR

**Qualifications:**

- Must be currently enrolled Student at Oregon State University for at least 6 academic credits. Must have a minimum GPA of 2.0.
- Must be in good academic standing for the term prior to selection and during entire period of employment.
- Must have demonstrated experience with program planning and student leadership development.
- Must have demonstrated knowledge of and sensitivity to traditionally underrepresented groups (gay, lesbian, bisexual, transgendered, questioning, queer and intersex individuals and allies)

**Job Responsibilities:**

Average 8-10 hours a week to include educational and social programming, referrals, providing information, coordinating weekly work schedule, organizing office supplies and center inventory; maintaining office logs.

**Starting Date:**

Monday, September 9, 2002

**Regular Work Hours:**

Monday, September 9, 2002 - Friday, June 13, 2003

**Cultural Center Staff Training Dates:**

Spring: Tuesdays (April 2, 16, 23 and May 14, 2002) 5:30 - 7:00 PM  
Fall: Monday, September 9, 2002 - Friday, September 20, 2002

**Application Available:**

Student Involvement from Monday, February 18, 2002 until Thursday, February 28, 2002 at 5:00 PM

**Application Deadline:**

Friday March 1, 2002 at 5:00 pm.

**Remuneration:**

\$6.50/hour  
1 hour course credit for spring training

**Selection Timeline:**

Candidates will be selected by Friday, March 15,

# DEFEND EVERYONE'S BASIC RIGHTS



Authorized and Paid for by Basic Rights Oregon • P.O. Box 406240 • Portland, OR 97240

OPEN



1. History of the discussion of the creation of a LGBTTI & A Resource Center.

- ❖ 1999/2000- The Rainbow Continuum, OSU LGBT student organization, identified a pattern of requests for information, support and service that was beyond the scope of the few engaged members of the organization as well as not the intent of the organization.

These requests included:

- Advising and Supporting LGBT students in crisis
- Managing a Safe Zones Program
- Participating on Academic Panels on sexuality
- Responding to Hate Crimes
- Financial support for educational programs
- Programming/education about LGBT issues
- Participation in recruitment and retention programs for OSU

- ❖ Winter Term 2000- Three members of the Rainbow Continuum sought guidance from the Rainbow Continuum Faculty Advisor (Robin) concerning the lack of community (university) support for LGBT students, staff and faculty. They were advised to identify other models of support for minority, underrepresented, populations within the OSU community and the Oregon State University System.
- ❖ Conversations were initiated with the SI Diversity Development Coordinator and the Director of the Lesbian, Gay, Bisexual and Transgender Educational and Support Services Program at U of O in hopes of determining an avenue to create an environment of support for the LGBT community.
- ❖ The students determined that a cultural center format would be best suited to the OSU community and would be able to meet their needs.
- ❖ Spring Term 2000- Rainbow Continuum members initiated a conversation with the MU in hopes of providing support and space to proceed with this idea. It was advised that they continue their research to find other models and to gather information about the needs of the LGBT community on the OSU campus.
- ❖ Fall Term 2000- Ellen Weigant, an active member of the Rainbow Continuum committee working on this idea, is hired as the ASOSU LGBTQ Task Force Director. In conjunction with other ASOSU Executive Officers the conversation is brought back to the table.
- ❖ The LGBTQ Task Force identifies the creation of a "Queer Cultural Center" as its #1 goal for 2000/2001. They work to gather information from other Pac 10 and Oregon schools; phone banking, emailing and interacting with individuals during conference opportunities.
- ❖ November, 2000- Ellen calls to order the first committee meeting concerning the creation of a Queer Cultural Center on the OSU campus. In attendance is SI Diversity Development Coordinator, SI Special Event Coordinator, ASOSU LGBTQ Task Force members, ASOSU Chief of Staff, ASOSU Finance Director, Student Fee Chair, ASOSU Projects Coordinator and members of Rainbow Continuum. Grass roots organizing strategies based on the "GROW" strategic planning model are introduced and everyone commits to support and participation. Tasks are assigned.
- ❖ The committee reconvenes after break. A draft proposal is presented and approved.
- ❖ The next order of business is funding. The initial idea is to return to the MU requesting funding but it is determined that because of the restructuring of the Memorial Union Organization that it would be more appropriately sought from the SI. With concern over the unknowns in the new funding structure the committee determines to explore funding from ASOSU using the legal advising and Safe Ride components as templates.
- ❖ The ASOSU LGBT Task Force Director, Finance Director, Chief of Staff, Project Coordinator and Student Fee Chair present the proposal to the ASOSU Executive Branch in hopes of securing a funding avenue. Opposition was voiced and heated emotional debate ensued. The proposal was tabled. The emotions over the refusal and rejection caused pandemonium with the committee. After working so hard they felt they had run into an insurmountable wall. NO funding.

2. Where and how did SI get involved.

- ❖ About this time the SI staff had developed the budget for the 2001/2002 fiscal year. Robin identified an unspoken for \$ amount of \$7000.00 from the allowable 3% increase in our funding base. Initial conversation was to fund a retreat for Student Organization Leaders; Beth voiced the idea of funding for the QRC. A vote was taken and the entire staffed voted to support the proposal of funding the QRC.
- ❖ In further conversation the back room in the Women's Center was identified as a "viable" location.
- ❖ The MU Board passed the funding packet on for further consideration.

3. What transpired in process.

- ❖ The next step was for the MU to hold an open forum for discussion on the budget. 100+ individuals crowded a meeting room, 99% in favor of the proposal. The Diversity Development Coordinator, Asst. Director, Special Event Coordinator, Student Organization Development Coordinator, ED Act Accountant and GTA's represented SI. The Diversity Development Coordinator made a statement into the record in support of the proposal.
- ❖ After this hearing Dr. Roper voiced concern over the perception that Student Involvement was advocating for the QRC. He advised us to step back and allow the students and process to work. Staff members of the SI voiced a bit of confusion but stepped back.
- ❖ Dr Roper, Michael Henthorne and Susan Longerbeam took the lead in setting up dialogues for the community around the issue in a three part series. These series were well intended but a sense of frustration emerged for some (mostly LGBT) students, staff and faculty involved. They felt that the "real" issues were not being discussed and the voice of hate was given the floor. Words used by the opposition included "degradation of society," "sinners."
- ❖ The Daily Barometer was inundated with letters in favor and against the creation of the center. The topic of the term was the QRC.
- ❖ The committee listened to the community and changed the name of the center to Resource instead of Cultural. A more inclusive listing of the individuals that would be represented started to be used, LGBTQQI.
- ❖ Press hearings were held by both the Task Force Planning Committee and the opposition.
- ❖ The budgets were presented to the Student Fees Committee. In a hearing attended by some 300 almost evenly split for and against, the committee unanimously passed the budget. Debate still continued.
- ❖ The next step was for the budgets to move through the student senates. Which it failed to do and was sent to arbitration.
- ❖ It passed in arbitration.
- ❖ After the final passage of the budgets in May the SI staff (Beth and Robin) meet with the outgoing ASOSU LGBT Taskforce Director and Rainbow Continuum President. It was decided that the creation of the advisory board should be the next step. Discussion concerning staffing led to a model of a Student Coordinator working with numerous volunteers and interns.

4. What now?

- What is the SI role in creating/managing/supporting a QRC?
- What will it look like?
- Who will be involved?
- Goals
- Timeline



# The Daily Barometer

Oregon State University, Corvallis, Ore.

barometer.orst.edu

**TUESDAY**  
February 27, 2001

Newsreel ..... 2  
Forum ..... 4  
Classifieds ..... 6  
Sports ..... 8

**OPENING DAY**  
After a grueling road schedule, the OSU baseball team will finally play its first home game today  
SPORTS, PAGE 8



Vol. CV No. 93

## Proposal calls for campus Queer Resource Center

► If approved by the Student Fees Committee, the center would use \$7,000 of student fee dollars and become the fifth cultural center

By **TARA MOORE**  
BAROMETER STAFF WRITER

A proposal that will go before the Student Fees Committee Wednesday calls for the creation of a Queer Resource Center, funded by student fee dollars, which would serve the university community in a similar capacity to the four cultural centers already established on campus.

Since Nov. 2000, Ellen Weigant, ASOSU Lesbian Gay Bisexual Transgender Task Force Director, and others have been working toward establishing a resource center at OSU for the queer community.  
"I think that it's been talked about in our community for a long time," Weigant said. "And yes, it has been needed for a long time. But people haven't been willing to fight for it until now. And if they weren't willing to fight for it, then it obviously wasn't needed enough."  
The center's proponents hope it will serve a role similar to those served by the Asian Cultural Center, Lonnie B. Harris Black Cultural Center, and the Hispanic Cultural Center.

| See **CENTER**, page 3 |

► ASOSU Vice President Chala Barrington opposes the formation of such a center, saying cultural centers are for students of color and minorities

By **TARA MOORE**  
BAROMETER STAFF WRITER

Included in a Student Involvement budget package that will be presented to the Student Fees Committee on Wednesday, among many other requests, is a proposal for start-up funds to create a Queer Resource Center.  
While the proposed center has many supporters, ASOSU Vice President Chala Barrington is not one of them.  
In a letter addressed to the budgeting committee, Barrington wrote: "On this current issue I'm speaking on behalf of hundreds of students who feel that their money should not fund a LGBT resource center, mainly because of the controversy that surrounds the issue. Because of the controversy on such a delicate matter I must agree with these students in urging that funding not be given toward a LGBT resource center."  
If approved, the QRC would provide a space for the lesbian, gay, bisexual, transgender and

| See **OPPOSITION**, page 3 |

## Center: Would require \$7,000 of student fee funding

Continued from page 1

ter, Centro Cultural Cesar Chavez and Native American Longhouse.  
The Rainbow Continuum and Weigant have been working with the Women's Center, ASOSU LGBT advocates, and Circle of Friends to move toward their goal.

The QRC's proposed budget of \$7,000 will be presented to the Student Fees Committee at 5 p.m. on Wednesday.  
If approved, the proposal will place the QRC in a back room of the Women's Center. The requested student fee support would cover the cost of student salaries, operating supplies and other expenses. If approved, student fees would increase by a small amount.

"If you're going to raise the student fees 50 cents for athletics, you might as well raise it five more cents for the damn queer center," said Carolyn Dishman, Co-Director of the Rainbow Continuum.

If the Student Fees Committee gives the go ahead on the proposal, OSU's QRC would join the ranks of similar centers at 79 other colleges and universities across the country, including the University of Oregon's LGBT Educational & Support Services and the University of Washington's Social Justice Center.  
The center's staff would work to eliminate heterosexism and gender identity oppression, as well as to support diversity in the areas of sexual orientation and gender identification.

"Braking down barriers is really what it's all about," said Beth Rietveld, director of the Women's Center. "It's important to recognize that a large portion of our campus don't feel validated, and do feel discriminated against."  
Said Weigant: "When I became the office manager for the Rainbow Continuum, I started fielding all of the phone calls and trying to do all the things that

the office is expected to do. And I realized that we were trying to run a little mini cultural center in an 8-by-8-foot space with five people who were entirely volunteer, who had no training, who didn't really know that much — but who had free time in their day and were coming in to work."  
QRC proponents say the center would provide programs and support services for members of the LGBTQ community.  
"I came out at the beginning of winter term when I was a freshman in college," Weigant said. "It was very hard. I felt like I had to hide from everybody, and I couldn't let anybody know. It was a very difficult feeling because I'm the kind of person who talks about their life to everybody."

Tara Moore covers student government for The Daily Barometer. She can be reached at tdanielle@usa.net.

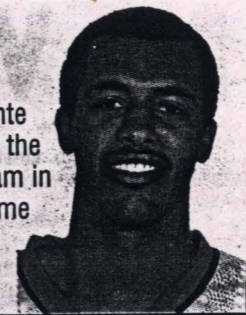
OPEN



# The Daily Barometer

## MOVING ON

Oregon State guard Emonte Jernigan decides to leave the university's basketball team in search of more playing time  
SPORTS, PAGE 7



## WEDNESDAY

March 14, 2001

Newsreel .....2  
Forum .....4  
Letters .....5  
Classifieds .....6  
Sports .....8

Oregon State University, Corvallis, Ore.

barometer.orst.edu

Vol. CV No. 104

## QRC proposal faces crucial next step

► A Student Fees Committee decision tonight may be the deciding factor in the QRC proposal's eventual fate

By TROY FOSTER  
BAROMETER EDITOR

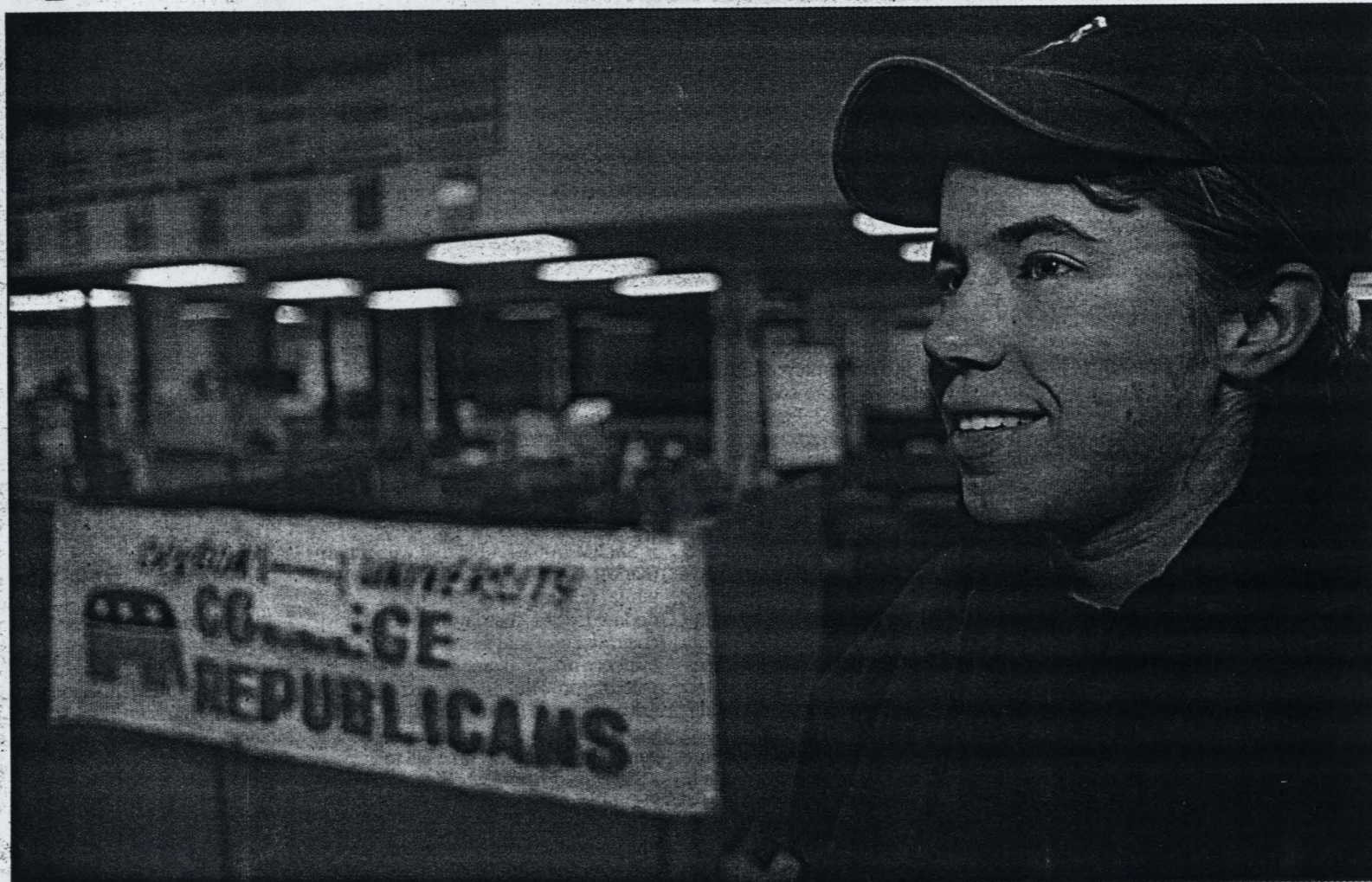
Student Fees Committee members say they are preparing for a capacity crowd in the MU Ballroom tonight for an open-hearing that may be the most crucial step in the fees process for a proposed Queer Resource Center.

"We are going to have some security there because when you have a large crowd it's important to keep everything safe and civil," said Melanie Spraggins, Student Fees Committee chair.

The committee will likely play the most important role in the QRC proposal's fate when it votes. The hearing begins at 6 p.m. and is expected to end at 8 p.m.

Christian Matheis, a member of the Student Fees Committee who has publicly said he will vote in favor of the proposal, said that the committee is the last voting-body in the convoluted fees process that has line-item approval or rejection power.

The proposal, which would use \$7,000 of student fee money — an increase of 15 cents per student per term — is one of five decision pack-



uate senates as part of the greater Student Involvement budget.

"By the time it gets to the senates, if they reject anything, they're rejecting a \$900,000 Student Involvement budget," Matheis said.

But even if it is rejected by either senate, Matheis said, the Student Involvement budget goes to an arbitration committee composed of the ASOSU executive committee, the two senate chairs and the Student Fee Committee. At that point, any remaining issues will be sorted out before the budget is forwarded directly to OSU President Paul Risser, who ultimately approves or rejects student fee budgets.

| See HEARING, page 3 |

## Cultural center leaders hesitant to voice a clear position on proposal

By TARA MOORE  
BAROMETER STAFF WRITER

Officials from three of OSU's four cultural centers say they are hesitant to throw support behind a proposed Queer Resource Center or the individuals who oppose it because of mixed feelings within their own communities.

However, these same officials did say that their centers will be aligned with whatever position Student Involvement takes.

The official standpoint of Student

Involvement remains unclear even though the QRC proposal is one of five decision packets included in its budget for the upcoming year.

"We're trying to respect the student fees process," said Linda Paschke, student organization development coordinator for Student Involvement. "We will have an official statement after the hearing."

A Student Fees Committee hearing scheduled for 6 p.m. tonight in the MU Ballroom will play a large role in the controversial proposal's fate.

The QRC has been the center of a debate that some say is tearing the campus into two factions, those for and those against the formation of the Queer Resource Center.

Both Chala Barrington, ASOSU vice president, and the OSU College Republicans, a student group, have expressed that the passage of the QRC would undermine the legitimacy of the four cultural centers.

Where the existing cultural centers stand on the issue has been a question that many are begging to have

answered.

Melvin Young, external coordinator of the Black Cultural Center, said the official standpoint of the BCC is the same as Student Involvement's standpoint — whatever that may be.

"We all receive funding from the same source. And the bottom line is, I'm going to support anyone in Student Involvement for any decision that they make," Young said. "Because in the long run, they support me."

| See CULTURAL CENTERS, page 3 |



## Hearing: QRS proposal would mean increase of 15 cents per student

Continued from page 1

"When something goes to arbitration," Mathews said, "it usually goes there to get worked out and then passed."

However, proponents of the QRC proposal are not expecting those who oppose it to back off without a fight.

ASOSU Vice President Chala Barrington and the OSU College Republicans, a student group, have voiced their opposition to the proposal.

The debate that has surged since the

proposal became public has drawn the interest of statewide media. The Oregonian, the Associated Press and four television stations have begun reporting on the controversy.

The OSU College Republicans will host a press conference today at 3:15 in MU, Room 110. The Rainbow Continuum, an LGBT group that supports the QRC, will host their own press conference at 10:30 a.m. in the Centro Cultural Cesar Chavez.

"I'm confident the proposal will

pass," said Carolyn Dishman, co-director of the Rainbow Continuum.

Dishman's group shares office space in Student Involvement with the OSU College Republicans and says there has been "tension" between the groups over the past few days.

The Student Fees Committee may vote on the proposal by secret ballot, Mathews said, who added that one administrator recommended that backpack searches be conducted on those who attend the evening hearing

— an idea the committee rejected. "There's some intimidation issues," Mathews said.

Attendees of the hearing have the opportunity to speak one minute one time only during open discussion. A moderator — likely Vice Provost of Student Affairs Larry Roper — will decide the topics the committee will hear.

Troy Foster is the editor in chief of The Daily Barometer. He can be reached at 737-3191 or at [baro.editor@studentmedia.orst.edu](mailto:baro.editor@studentmedia.orst.edu).

## Cultural centers: Not just for students of color, Heard-Johnson says

Continued from page 1

If the budget packet receives approval from the Student Fees Committee, it will continue on to the ASOSU undergraduate and graduate senates and finally to OSU President Paul Risser.

Upon approval, the QRC would join the four cultural centers under the direction of Student Involvement, a division of Student Affairs that oversees and advises all registered student groups and organizations.

Diversity Development Coordinator Cessa Heard-Johnson, who oversees the four cultural centers, said she is personally in support of the proposed Queer Resource Center.

"The centers are not just for students

of color. They could be for anyone who walks in and wants to learn about that particular group," Heard-Johnson said. "I see this as a resource center for that exact same purpose.

"It may not be me. I am completely and utterly heterosexual. But it's still a place where I can go and learn. You don't go to the Black Cultural Center to learn and come away black."

Josh Campbell, internal coordinator of the Native American Longhouse, echoed similar sentiments to that of Young.

"The Longhouse really belongs to Student Involvement," he said. "Our viewpoint is that of Student Involvement's."

Young did say, however, that there

have been views expressed within the Lonnie B. Harris Black Cultural Center both in support of and in opposition of the QRC.

"It's one of those subjects that is very difficult to speak as a collective voice when it's a subject that every single person has a different view on," he said.

Some of the mixed reviews may be related to the QRC initially being proposed under the working name "Queer Cultural Center."

"I think that the whole cultural center thing slid under the carpet really quickly and got changed to the resource center," Campbell said. "Now all they're reading is QRC, QRC, QRC. Officials with the Centro Cultural Cesar Chavez declined to comment on

the proposal. Jennifer Hirota, external coordinator of the Asian Cultural Center, said only that her center's members don't have an official opinion on the matter but that they are aligned with the other three cultural centers. Heard-Johnson, however, is clear in her support of the QRC.

"If people say 'no, I really fear what that will say to our gay students on this campus,'" Heard-Johnson said. "It will say 'we don't want it here' and that's what scares me. The big picture is, take 'gay' out and insert any other oppressed group."

Tara Moore covers student government for The Daily Barometer. She can be reached at [tdanielle@usa.net](mailto:tdanielle@usa.net).

### Dear Dr. Sex:

What is all the fuss about a Queer Resource Center? Why do we need something like that?

— *Straight and Confused*

### Dear Straight and Confused:

There currently stands a proposal for a Queer Resource Center on campus. The fuss has erupted because some individuals and groups don't want student fees to fund it. At this point, I will not take a side for or against the funding of the resource center. I will, however, explain the reason why there is a desire for such a resource center.

I will also comment on the illogical and even inaccurate statements made by individuals recently quoted in The Barometer. These individuals made it clear that they are against such a resource center, either for philosophical reasons or monetary reasons. My remarks are not personal attacks on these individuals, but rather criticisms of

their arguments, which either aren't based upon facts or aren't logical.

There are a number of reasons that there is a desire for this resource center. First, there are many LGBT (lesbian, gay, bisexual or transgender/transsexual) individuals on this campus and who wish to have a center where they can hang out with individuals who share their same life experiences and where they can feel safe to be who they are — openly and without judgment.

Second, they want a place where individuals who are questioning their sexuality can go for information and support.

Third, and I think most importantly, they want an established center on campus so they know the university supports them emotionally and philosophically — not just financially.

As for comments made in a recent story in The Barometer, I take issue with at least four. First, ASOSU Vice-President Chala Barrington said, "Being LGBT is a lifestyle and a choice." It is fine if she wants to believe that personally, but I can tell you that the consensus among experts in the field of sexuality is that being LGBT is NOT a choice.

If you want to agree with Ms. Barrington on personal/philosophical reasons, that is fine, but know that there is no scientific or researched-based proof to back up such a position. There is however, much

Kathy Greaves

ASK DOCTOR SEX



research to support the notion that being LGBT is biological/hormonal/genitally based. And remember, that is what we do here at OSU — RESEARCH and then teach about such research.

Second, Lee Vasche, president of OSU College Republicans, said, "If this resource center is approved, bet your bottom dollar, we will have a proposal very soon, for \$7,000 (the amount being requested by the Queer Resource Center) for a Conservative Student Resource Center." Well, Mr. Vasche, I have news for you. If you get your center, you can bet your bottom dollar you will have conservative students visiting your resource center and some of them will be LGBT individuals. Contrary to popular myth, there are conservative as well as liberal LGBT individuals.

**If you want to agree with Ms. Barrington on personal/philosophical reasons, that is fine, but know that there is no scientific or researched-based proof to back up such a position.**

Third, Mike Kingsella, OSU College Republicans' vice president of outreach and community development, suggested that soon the Student Fees Committee will have to consider a Left-Handed Center "because you don't choose to be left-handed, you're born with it."

While making such a comparison aids in my position that being LGBT is biological; left-handed people aren't discriminated against for their biological situation, yet LGBT people are. I ought to know. I am left-handed. In actuality, making such a comparison trivializes the life experiences of LGBT individuals.

Fourth, Vasche also stated that the desire for a Conservative Resource Center was so that there would be "a place where we could go and feel safe." He made this statement

| See DR. SEX, page 6 |

6 • WEDNESDAY, MARCH 14, 2001 • THE DAILY BAROMETER

## Dr. Sex: Fear hate, not LGBT community

Continued from page 4

because that is part of the LGBT community's reasoning and desire for the Queer Resource Center — to feel safe. However, I am at a loss to come up with an example of how conservative people feel unsafe in our community. I can, however, give you numerous examples of why LGBT individuals feel unsafe.

In fact, Vasche's statements even contradict themselves. At one point, he said, "OSU is highly revered in our state as a place of strong values and strong moral convictions. This is going to tarnish Oregon State University's reputation around our state among conservative families," suggesting that OSU is, for the most part, a conservative university. He later states, however, that, "We as conservatives are persecuted on campus. Our views are often times not allowed in our classrooms."

So let me get this straight: We are a conservative campus, but conservative views aren't allowed. I'm so confused. I'm not even going to address his suggestion that LGBT individuals have weak values and weak moral convictions.

If OSU is, in fact a conservative campus, I'm worried. Let me just remind you of a chilling example of why LGBT students at conservative college campuses

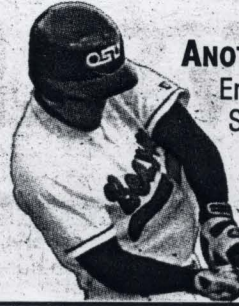
in this country feel unsafe. In October of 1998 in Laramie, Wyoming, a 22-year-old student at the University of Wyoming named Matthew Shepard was beaten and tied to a fence post, and left for dead in the freezing night air. He was murdered solely because he was gay.

If that wasn't bad enough, what broke my heart and made me cry was a photo I saw taken at his funeral. As his family and friends, people who loved Matthew for who he was, were entering the church, grieving for their loss, there was a group of individuals standing across the street. One man was holding a very large sign that read, "FAGS GO TO HELL." Another man was standing next to him with a sign that read, "GOD HATES FAGS." These are the individuals we should fear, not the LGBT community.

Kathy Greaves is the sex columnist for The Daily Barometer. The opinions in her columns, which appear every Wednesday, do not necessarily represent those of The Barometer staff. Greaves can be reached at [kathy.greaves@orst.edu](mailto:kathy.greaves@orst.edu), or by placing questions in the box at the MU information desk. All questions submitted to Greaves are subject to being answered in her Dr. Sex column.



# The Daily Barometer



**ANOTHER COMBACK WIN**  
Eric Stark and the Oregon State baseball team used late heroics Wednesday to defeat Gonzaga for the second-straight day  
SPORTS, PAGE 8

**THURSDAY**  
March 15, 2001

Newsreel .....2  
Forum .....4  
Letters .....5  
Classifieds .....6  
Sports .....8

Oregon State University, Corvallis, Ore.

barometer.orst.edu

Vol. CV No. 105

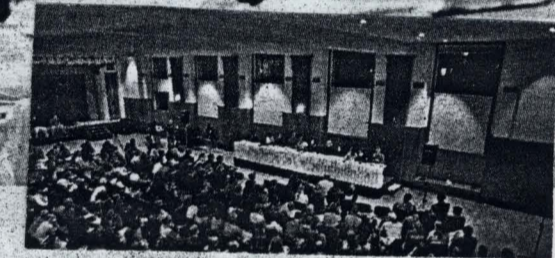
## QRC passes unanimously



TOP: Student Fees Committee Chair Melanie Spraggins (center) responds to a question as the rest of the committee listens. ABOVE: Rainbow Continuum co-director Carolyn Dishman applauds just after the committee makes announcements regarding the QRC's passage. RIGHT: ASOSU Legal Advocate BLANK Lacey responds to a question regarding a precedent set by the U.S. Supreme Court decision on student fees.



PHOTOS BY SEAN HANRAHAN



ABOVE LEFT: An estimated crowd of 350 people attended the two-hour open hearing. LEFT: Vice Provost of Student Affairs Larry Roper, who moderated the open discussion, explains the ground rules of gallery comments. ABOVE: ASOSU Vice President Chala Barrington asks the Student Fees Committee to consider the consequences of approving the Queer Resource Center proposal.

### Heated meeting ends with 7-0 vote in favor of controversial proposal

By **TARA MOORE**  
BAROMETER STAFF WRITER

Supporters of a Queer Resource Center rose to their feet in elation Wednesday as the Student Fees Committee approved the controversial proposal unanimously.

The committee, which conducted its vote by silent ballot, passed the decision package by a 7-0 vote, said Student Fees Committee Chair Melanie Spraggins.

"I'm completely thrilled," said Carolyn Dishman, co-director of the Rainbow Continuum, an LGBT student group. "But I knew it would be this way."

More than 350 people filled the MU Ballroom Wednesday for the hearing. Although the QRC proposal was just one of many decision packets up for discussion, others drew little interest.

Once the QRC proposal was up for discussion, both supporters and opponents contributed to a heated discussion that ensued for over an hour.

ASOSU Vice President Chala Barrington, a vocal critic of the proposed center, approached the microphone twice demanding that Student Fees Committee members

consider the consequences of approving the proposal.

"Who, or what group, would be allowed to fit the definition of need?" Barrington asked. "And are you, the committee, going to make that decision? And what will that do to our student fees?"

Barrington then passed out 10 mock proposals to the committee drafted by the OSU College Republicans that supported their opinion that almost any student group will be allowed to request and receive money for resource centers. The mock proposals included a Buddhism Cultural Center, a Canadian Cultural Center, an Islamic Cultural Center, an Iranian Cultural Center, a Vegetarian Resource Center, a Jewish Cultural Center, a Hydrophiles Cultural Center, a Germanic Cultural Center and a Baptist Cultural Center.

Not long after, ASOSU President Justin Roach, who had so far remained mum on the issue, announced he would split with his vice president on the proposal.

"It was hard for me to stand up and say what I felt," Roach said to the crowd. "But I'm not going to stay

### Queer Resource Center Budget Proposal 2001-02

The mission of the Queer Cultural Center will be to provide programs and support services for gay, lesbian, bisexual, transgender people and allies of the Oregon State University community. The Center will be safe space for all members of the university community to explore aspects of sexual orientation and gender issues in an open and non-judgmental atmosphere. Services provided will include advising and referral to other University and external support programs, educational outreach designed to improve the campus climate, and resources for those individuals who seek information on sexual orientation/gender identity.

The Center will affirm lesbian, gay, bisexual, and transgender identities and lives and provide education, outreach, programs support, consultation, community development, visibility and advocacy.

The Queer Cultural Center budget request is for start-up funds to support a part-time student staff, to obtain resource materials (library books, magazines, periodicals, videos), and to host events/educational outreach programs about the lives and concerns of lesbian, gay, bisexual and transgender people.

The initial space allocated to the OCC would be in the Women's Center until such time as other space has been identified (hopefully by Fall Term, 2002). Staffing, training, administrative support and resource allocation would be within the job responsibilities of the Assistant Director of Student Involvement.

The Rainbow Continuum, ASOSU LGBT Advocate, Circle of Friends, Student Involvement staff and Women's Center staff were all involved in consultation on this proposal.

### Queer Resource Center opponents say they will continue their fight

By **TROY FOSTER**  
BAROMETER EDITOR

They're not finished yet.

So said members of the OSU College Republicans as they promised to continue their opposition to the proposed \$7,000 Queer Resource Center, which they feel will set a dangerous precedent that will cause student fees to spin out of control.

Lee Vasche, president of the student group, said shortly after Wednesday's Student Fees Committee open hearing that the OSU College Republicans as well as other students against the QRC "will escalate our opposition."

"We are incredibly frustrated," Vasche said. "The Pandora's box has been opened. This committee is now going to have to subjectively judge which groups are deserving of cultural centers and which are not — all the while increasing our student tax rate."

However, when asked whether she'd continue to actively oppose the proposal now that it has moved on to the undergraduate and graduate senates, ASOSU Vice President Chala Barrington said, "We'll see."

"I just want to make sure that students feel like their voices are heard," Barrington said. "Not many people are willing to stand up for things like

this. But I really still feel that it's important for students to still know that it's OK to stand up for what you believe. There is a presence on this campus that if you oppose something such as issues like this, then you are automatically classified as 'bigot' and as 'ignorant.' And you know what, people have been proving me right in the newspapers."

As the Student Fees Committee unanimously approved the QRC proposal by a 7-0 vote, so concluded a strange day for the College Republicans. An afternoon press conference hosted by the student group was interrupted 15 minutes into the presentation when the Memorial Union was evacuated due to a fire alarm.

Police and firefighters arrived at the building only to discover that a fire alarm had been pulled manually by someone inside, Battalion Chief Randy Brodehl of the Corvallis Fire Department said.

"It is a little peculiar that it happened during our press conference," Vasche said. "I'm not going to make accusations, but it raises an eyebrow or two."

Then, during a separate meeting by the Student Fees Committee at 5 p.m.

| See QRC, page 3 |

| See OPPOSITION, page 3 |



Continued from page 1

quiet any longer. I've not been the ally that I need to be as a student leader.

"I will not and cannot agree with the views of my partner. We've been posed with a win-lose situation ... but I just want to leave you with the fact that if we support students, we all win."

The \$7,000 proposal will now go before the undergraduate and graduate senates as part of the \$900,000-plus Student Involvement budget for the 2001-02 academic year.

"It was a really hard (decision). I had to set my personal feelings, not matter what they were, aside and just look at what we had to vote on, and the issues were the funding," said Harold Ashburn, a member of the Student Fees Committee.

The Student Fees Committee also approved five other Student Involvement decision packages that provide additional funding for the existing cultural centers, the Women's Center and money to spend on Student Involvement fairs.

The Queer Resource Center will cost an

additional 14.6 cents per student, per term, and be located in a room within the Women's Center if it makes its way past the senates, to OSU President Paul Rissler and finally onto the State Board of Higher Education. The entire Student Involvement budget boils down to a 45-cent increase per student, per term.

Only one decision packet was denied during the hearing — a 16-cent per student, per term request to place an OSU logo and Beaver-related paraphernalia on a Corvallis Transit System bus.

To keep the meeting from continuing into the wee hours of the morning, the committee imposed a time restriction of one minute per comment.

Views expressed were from both sides and often the time limit was ignored.

Although many in attendance decided not

### Queer Resource Center Budget Breakdown

Student wages	\$3,600
Operating Supplies	\$100
Books, Publications	\$400
Telephone	\$300
Printing, Copying	\$400
Equipment Rentals	\$400
Advertising	\$350
Performance Fees	\$1,000
Hosting Groups	\$250
<b>TOTAL BUDGET</b>	<b>\$7,000</b>

to speak at one of the two microphones set up on opposite sides of the room, the majority found a way to express their opinions.

Several signs, with comments such as "Don't shut the door on QRC — Open Minds Open Doors" and "I support the QRC" were held by crowd members. Others wore stickers declaring "I oppose the QRC" or "Support the QRC."

Many foresaw the resolution since the committee cannot approve or reject a decision package based on content.

Patricia Lacey, ASOSU Legal Advocate for Students, was on hand to make sure that this policy was followed, stating that it would be unconstitutional to refuse the funding based on the subject matter.

The next stop for the QRC will be the ASOSU Undergraduate Senate, followed by the ASOSU Graduate Senate, and finally on to Rissler.

"I don't know if this campus is ready for it, but there is a need," Dishman said following the hearing. "And it's going to happen one time or another, so some people are just going to have to deal."

If the budget packet is not approved by the senates, the entire budget will be denied and can go into an arbitration process that involves the Student Fees Committee, the two senate chairs and the ASOSU executive committee.

Beth Rietveld, director of the Women's Center, said she can only recall one time in the past 22 years at OSU that the Student Involvement budget was rejected.

"I don't think graduate senate will really oppose it at all," said Faith Bass, ASOSU's executive director of finance. "But we might run into some problems with the undergraduate senate but I'm really not concerned."

If accepted planning will begin shortly thereafter to establish the center.

Tara Moore covers student government for The Daily Barometer. She can be reached at tdanielle@usa.net.

## Opposition: Republicans receive funding

Continued from page 1

prior to the evening's open hearing, the committee approved the Educational Activities budget for 2001-02, which included within it \$1,000 in start-up funds for the OSU College Republicans — money they said they were not expecting.

That undermined one of three main arguments the College Republicans offered in opposition to the QRC during their press conference, which held the attention of various statewide media outlets.

Mike Kingsella, College Republicans vice president, said during the press conference that the group was against the QRC proposal because they are "opposed to student tax increases."

But later, during the open hearing, proponents of the QRC proposal used this against them.

College Republicans Treasurer Chi Young said the group had asked for \$1,600 in student-fee funds to "test the waters of content neutrality." Young said their proposal was originally rejected and nobody within the College Republicans was ever expecting any money.

The group maintains that a Queer Cultural Center violates content neutrality laws established by a U.S. Supreme Court ruling in Board of Regents of the University of Wisconsin System v. Southworth.

dent fees or ed act decided to give us \$1,000," Young said. "We expected them to outright deny us. And we expected them to be hypocritical under content neutrality. We're surprised and we think this was their way of trying to appease us over this QRC deal."

"We weren't expecting this money."

During their press conference and later in the open hearing, members of the College Republicans also said they were in support of already-existing services and resources available to the lesbian, gay, bisexual and transgender community — but not a center that will further "segregate" them in an isolated center.

"We believe that already, this campus is accepting of the homosexual community," Kingsella said. "While there will always be bigots and homophobes, sadly, the Queer Cultural Center won't stop them."

Furthermore, Kingsella said the center will "create a divisive environment, one where students are polarized to a great extent."

Vasche said the College Republicans, a group with about 20 core members and 100 total, won't back down quietly.

"We're not going away," he said. "This is something that we believe is not in the best interests of the OSU community."

Troy Foster is the editor in chief of The Daily Barome-

# Lawsuit challenges university housing policy for homosexual graduate students

► University of California at Berkeley had done little to change standards, but will soon re-address the issue

By RICHARD MILLS

DAILY CALIFORNIAN (U. CALIFORNIA-BERKELEY)

BERKELEY, Calif. — In a case that could influence campus policies across the nation, including the University of California at Berkeley, a New York state court heard a lawsuit Tuesday alleging discrimination against same-sex couples seeking graduate student housing at a private university.

Yeshiva University, a New York City college with more than 6,000 students, requires that couples be married in order to qualify for university-subsidized graduate student housing, therefore excluding gay couples who cannot legally marry.

A similar policy exists at UC Berkeley, which requires couples without children to be married in order to qualify for graduate student housing. Unmarried couples with children, however, can apply.

UC Berkeley also rejects domestic partnership registration, which is meant to be the equivalent of a marriage certificate for same-sex couples, as qualification for graduate student housing.

Harry LeGrande, assistant vice chancellor for the residence and student services pro-

gram, said that the housing dilemma has been a difficult problem for many universities.

"All of the UC campuses have been grappling with this issue for some time," LeGrande said.

LeGrande also said that though there is a need to "broaden the definition of family," the university has done little up to this point to change the existing standards. The only significant change, according to LeGrande, was a revision that allowed same-sex couples with children to qualify for housing.

LeGrande said that the marriage requirement exists as a relic of the era in which the housing policies began.

"It has more to do with tradition," he said. "I think the policies were written long ago, and things are slow to change."

Chris Nealon, the chair advisor for the UC Berkeley Lesbian Gay Bisexual Transgender Services Office, said the marriage requirement is unfair.

"I think same-sex domestic partners should have the same rights and privileges as opposite-sex married couples," he said.

Nealon also indicated that UC Berkeley will soon address the issue.

"We expect a specific decision about same-sex housing any day now," he said. "It's an interesting time."

The New York lawsuit, brought up by the American Civil Liberties Union, is the first in the nation to challenge a university housing

policy toward same-sex couples.

The ACLU suit alleges that New York City laws, including one that prohibits discrimination based on sexual orientation, make the university's housing policy illegal.

Two lesbian students and a student group brought the charges to the ACLU in 1998 against the university and its Albert Einstein College of Medicine.

The ACLU has been defeated in two lower courts and is now being heard on appeal by the New York Court of Appeals, the state's highest court. ACLU Public Education Director Eric Ferrero said that the ACLU expects to have a more favorable outcome in the higher court.

"I want to stop short of calling the lower court judges homophobes," he said. "We feel the Court of Appeals will be much more fair."

The lower courts have ruled against the ACLU up to this point because, according to the courts, the policies impact non-married heterosexual couples in the same way that they impact non-married homosexual couples.

According to the ACLU, these courts did not comment on same-sex couples' inability to marry. Ferrero said the unavailability of housing for these students is more than just a political issue.

"It has such a practical effect," he said. "It's not just some abstract political issue — it costs people hundreds of dollars more a month to live off campus, just because they're gay."



# The Daily Barometer

**NOTHING CIVIL ABOUT IT**  
Brooke Rutschman (top),  
Steph Adams and the OSU  
softball team had a lot to  
celebrate about after beating  
Oregon on Adams' home run  
SPORTS, PAGE 8



**WEDNESDAY**

April 25, 2001

Newsreel .....2  
Forum .....4  
Letters .....5  
Classifieds .....6  
Sports .....8

Oregon State University, Corvallis, Ore.

barometer.orst.edu

Vol. CV No. 123

## MU budget sent to arbitration

► Six of the seven budget proposals pass at Tuesday night's Undergraduate Senate meeting, not including the controversial QRC proposal

By **KRISTY HESSMAN**  
BAROMETER CAMPUS EDITOR

The Memorial Union budget, which includes a proposal to create a Queer Resource Center, was the only budget request denied by the ASOSU Undergraduate Senate Tuesday night.

The MU budget caused confusion for a number of senators because it was presented as two separate budgets — Student Involvement and the Memorial Union — but falls under only one vote.

After lengthy discussion, and even after putting the issue aside while senators and MU representatives could work out the numbers, members of the senate voted against approval of the MU budget because of lack of clarity on the final numbers and because of disapproval of excessive spending.

The MU asked for an increase of more than 7 percent, including base

funding and seven decision packages.

Christian Matheis, chair of the Student Fees Committee, said that the senators were not prepared and had ample opportunity to educate themselves about the budget proposals.

The MU budget proposal will now head to arbitration, where members of the Student Fees Committee, executive senators, and members of ASOSU will look at the concerns the Undergraduate Senate expressed and approve a package that will go to President Paul Risser, who will ultimately approve the budgets.

"I'm not surprised that there was confusion over the issue," said MU Director Michael Henthorne.

He added that many of the budget issues surrounding the MU were brought up for the first time by senators on the floor.

"Now I will have a chance to explain it during arbitration," Henthorne said.

The ASOSU Graduate Senate will meet at 5 p.m. today in the MU East International Forum to discuss the same budgets.

A number of recommendations  
| See **SENATE**, page 6 |

## Senate

Continued from page 1

made by the senators during the meeting will be sent to arbitration, including suggestions to cut money devoted to audio/visual presentation and the creation of a salaried Web master position.

In addition to the recommendations, the Senate took a straw poll of those who believed funding QRC was considered unnecessary fiscal spending. Five of the senators said voted in favor of the QRC saying that it was not unnecessary spending, while 11 senators voted against it. The remaining five senators abstained from voting.

Trevor Livingston, chair of the Undergraduate Senate, said that there were a number of factors that contributed to the denial of the MU budget proposal.

"The MU's large budget increase plus the QRC issue led to each side feeding off each other," said.

The Student Health Services budget was also passed with opposition due to a \$6 increase per student per term, but in the end was passed by the majority.

The Intercollegiate Athletics budget, the Recreational Sports budget and the Counseling and Psychological budget were all passed by the senate unanimously.

In addition to approval of the budgets, two bills were also introduced to senate.

Jason Hower introduced a bill that would force ASOSU and MU elections to be held on the same ballot and that winners be announced by the seventh week of winter term to allow for a better transition period. This bill will be voted on by the Undergraduate Senate in two weeks.

**Kristy Hessman** is the campus editor of The Daily Barometer. She can be reached at 737-2231 or at baro.news@dentmedia.orst.edu.



#### Queer Resource Center

### College Republicans' hypocrisy is disturbing — QRC or not

I know nothing about the proposed Queer Resource Center budget, but have read quotes from the opposition. The ASOSU Vice President and College Republicans' blanket rejection is because gays are immoral and choose to be. It is interesting to hear these false prophets talk.

As a gay 1999 OSU graduate, I can testify to tolerating other people's views. I respected the environmentally-derogatory, poverty-indifferent and culturally-ignorant lifestyles and comments of OSU Republicans in my classrooms, residence halls and at work. Republicans flaunted their greedy and careless sentiments with OSU-funded facilities, no matter how much I believed (and still do) that their agenda was more likely to poison a healthy society. Suddenly, they deserve money for promulgating their scary ideas and homos like me don't. Well, how about that?

College Republicans are amazing hypocrites. Further proof is Lee Vasche maliciously vowing in the March 8 Barometer to propose a "Conservative Students Resource Center." Perhaps the Republicans should refuse all OSU funding themselves, if they consider themselves the pinnacles of social righteousness and fiscal prudence. I have no opinion on the queer center, but think the opposition needs to pray for either empathy or brain cells.

WAYLON BROWN,  
Salem

#### Queer Resource Center

### Here's a nay to conservatives

News flash to the close-minded students of Oregon State University: Your student fees are already supporting "resource" centers! There are centers for every ethnic group except for Euro-Americans on campus. There is even a center for women. The defense of the opponents of the QRC is that minorities and women were oppressed for so long that it's their right to have a place to regroup.

Homosexuals are being oppressed today, and have been for much longer than other races. They are not allowed to serve openly in defense of our nation. They are shunned in political and religious arenas. In many cases, parents disown their children after they learn of their child's sexuality.

All of you who are denying the LGBT community the right to have this center are just as bigoted as the majorities throughout history that have oppressed minorities. If we do not allow the QRC to be established, then every other center on this campus that promotes segregation from the mainstream needs to be closed down. I am saying that we are already supporting resource centers, ones that we may never use ... and no one is complaining. I will never use the Black Cultural Center or the Asian Cultural Center or the Women's Center, but that does not mean that they do not have the fundamental right to exist. Just as I will never use the QRC, the people who want it have a right to belong here. Those of you who are in opposition to adding 15 cents to your fees need to stop and embrace other minorities, or you will exhibit the evil bigotry you have preached against.

What is ironic is that it seems it's mostly ethnic minorities in opposition to this center. You'd think they'd be the first to support it.

JEFFREY HILL,  
Sophomore in geography and natural resources

#### Queer Resource Center

### Conservatives against public funding, not homosexuality

Oh here come the beating of the drums again. I've heard them so many times before. You see I'm a conservative and I'm young. The two just aren't supposed to mix. But I digressed already. I open my Barometer and here we are on the defensive again. The basic attack here is this: If you're against the QRC you're against homosexuals and their lifestyle. Well guess what, I am against the QRC and no I am not in the slightest against homosexuality. I have a distant cousin that is a self-proclaimed homosexual and I have worked with a homosexual as the guide in painting a house a few summers ago.

So why am I against the QRC? Well simply because its publicly funded. I, as a conservative, am naturally against most public funding. Of course there are situations that it is

undoubtedly come under question as a bigot and as an insensitive person.

But wait there is more to my conservative position if you haven't already marked me as a Nazi. As a conservative I have absolutely no problems with the QRC being built on private funds. Nor would I have a problem with any minority group putting up a resource center based on private funding. I also believe that the government does not have the right to dictate morals. How very un-Republican of me.

Yes I am a Republican (big surprise) but I am a conservative more than a party-line follower. And guess what, it means I'm even against the College Republicans receiving student fees! As I said before I'm against most public funding especially special interests that means almost all of them.

LUKE BETTS,  
Senior in business administration

#### Queer Resource Center

### AFAPC supports needs of all Oregon State University students

To the OSU community, President Risser and ASOSU:

The Association of Faculty for the Advancement of People of Color (AFAPC) would like to strongly voice our support for the expectation of safety and appropriate resources for all OSU students.

AFAPC fears that in the controversy surrounding the proposed Queer Resource Center, the campus peoples of color may have been portrayed as feeling threatened by and in opposition to the establishment of this resource. While some people of color at OSU may hold this position, the members of AFAPC wish to express our support for this center as we support the critical needs of all OSU students.

J. ANTONIO TORRES,  
Chair, Association of Faculty for the Advancement of People of Color

#### Queer Resource Center

### QRC opponents should attend dialogues to voice their opinions

OK, folks. It's time to get serious. Last Thursday I attended the second of three meetings designed to help bridge the gap between those who favor and those who oppose the funding of the QRC (and the divided population at OSU in general). This was the perfect chance to get together and voice concerns and figure out how to come together as a stronger, more accepting, less fearful community. And who showed up? Mostly those in favor! Imagine that. The voices we heard were those with which most of us agreed! What was accomplished in this meeting aside from the airing of frustrations? Not much that I can tell. Why? Because y'all — the ones who don't want the QRC funded — weren't there to talk! Where were you?

I appreciate the fact that some of you are busy. Some of you might feel threatened about entering a room full of proponents of the QRC. I assure you, you feel no less intimidated than I at the thought of facing a room

discuss those beliefs, and only one person (whose courage I commend) did so. Some might not be sure how to bring up personal beliefs about the university's use of monetary resources. And some of you might not care particularly about the issue — which is fine — but obviously some do, since The Barometer has been filled with your opinions (several of them quite ill-reasoned, tactless and inflammatory) for the last two weeks. It is those folks I address the following questions; where the heck were you when the heat was on? Why weren't you ready to back up your written discussion in an open, face-to-face forum? Could it be that you really have no desire or purpose behind your actions but to cause heartache and to spread misunderstanding, fear and loathing?

I would like to think that this is not the case, that you really want to be as open as possible about your beliefs and ideas, that you really want to learn from others who feel differently about this issue and come to a place of mutual understanding. Thus, I will refresh your memories. The next meeting to openly discuss our feelings, fears, and beliefs surrounding the issues which have surfaced around the QRC is on Thursday, March 15 at 3:30 p.m. in MU 206. Please join us in this effort to bridge our differences.

TRINA FILAN,  
M.A.I.S. in women studies, adult education and anthropology

#### Queer Resource Center

### We also want a Farmers Resource Center to make up for hardships

The growing number of people in agriculture is dwindling year by year. Each year countless numbers of farmer/ranchers lose their property and businesses to cooperate expansion and government imports. It is a common thread where the U.S. population is increasing and people (female and male) in production agriculture is decreasing. So here on the OSU campus students in agriculture are faced with a future in an occupational minority. I hope that the university will recognize our community and grant us funding for a Farmers Resource Center (FRC). We (in agriculture) to, feel the oppression of a society that expects wholesome food products in stores for an affordable price. Many of us have seen or have families that have gone under economic hardships and poverty due to increased production costs and reduced product prices. Government subsidies do not make up for the loss of values and a lifestyle that only agriculture can produce. I do hope that the Student Fees Committee can recognize the students in agriculture as a community in search of a resource center where we can gather as one. Society would rather import their food to save a dollar than to acknowledge the American farmer. It is a choice and a freedom that we are seeking, we the students in agriculture are the future for agriculture products. We hope that the Student Fees Committee can grant us funding for a place that we can call our own.

JIM HENDRICKSON,  
Graduate student in general agriculture



# Welcome To The QRC!

The OSU Queer Resource Center provides programs and support services for lesbian, gay, bisexual, transgender, queer, questioning and intersexed members of the OSU community and their allies. The QRC affirms the identities and empowers the lives of LGBTQQI people by providing education, outreach, program support, consultation, community development, visibility and advocacy. The QRC is a safe space for all members of our community to explore aspects of sexual orientation and gender identity in an open and non-judgmental atmosphere.

## Self Guided tour:

### Library:

The QRC is currently working on building an extensive library with information specifically focused on LGBTQQI needs and issues. There are already many books and magazines to read or check out of the center, and donations in the form of books, magazines, or money are always welcome. The center's books and magazines are located in the back of the center on the bookshelf. If you can check out a book or magazine for 3 weeks simply by filling out the small card below, detaching it from this paper, and leaving it in the basket by the computer.

### Information and Resources:

In addition to the information that can be found through the center's books and magazine, the QRC also has a variety of educational pamphlets on topics such as coming out, sexual health, and sexuality. Also available are condoms, dental dams, and lubricants, as well as JUST OUT, a local area news magazine focused on queer issues. Please feel free to take any of these items!

### A Welcoming Environment:

The QRC is open to everyone as a place to do homework, hang out, and meet new people. The center is also available for meetings. If you would like to receive information regarding future qrc programs and events, please fill out the small card below with your e-mail address so that you can be added to the QRC list serve.

### Book Checkout

Name: \_\_\_\_\_  
Phone Number: \_\_\_\_\_  
Book Title: \_\_\_\_\_  
Book Number: \_\_\_\_\_

### Listserv Sign-up

Name: \_\_\_\_\_  
Email: \_\_\_\_\_

← Cut out ↑  
and leave in  
Basket on the  
Filing Cabinet

Please fill in this card to receive information regarding future QRC programs and events. All information is optional.

Name: \_\_\_\_\_

Phone Number: \_\_\_\_\_

E-mail: \_\_\_\_\_

Identification: Queer    Transsexual    Lesbian  
Bisexual    Intersex    Gay    Questioning  
Ally    Heterosexual    Other: \_\_\_\_\_

Would you like to be involved in working with the QRC (i.e. volunteer work, being on a panel...)?

Yes    No

Would you like to be contacted regarding future programs of the QRC?

Yes    No

Would you like us to be discreet when contacting you?

Yes    No

**THANK YOU**

If you have any suggestions, questions or comments, please write on the back of this card.



Queer Resource Center Hours

	Monday	Tuesday
10:00-11:00	Will	
11:00-12:00	Clinton	Clinton
12:00-1:00	Clinton	Mark
1:00-2:00	Staff Meeting	Mark
2:00-3:00	Clinton	Will
3:00-4:00	Clinton	Will
4:00-5:00		Will
5:00-6:00		Staff
6:00-7:00		Staff
7:00-8:00		

**Coming Out Day Celebration!**

**Queer Resource Center  
Grand Opening Reception**

**Thursday October 11, 2001  
4 - 6 PM**

**In the Queer Resource Center  
Located in the Women's Center  
Benton Annex**

**WHERE:**

**WHY:**

**FREE**

**FREE-Ice Cream Social**

**January 29<sup>th</sup>, 2002  
(Tuesday)**

**4:00PM-6:00PM**

**Women's Center  
(Benton Annex)**



**To inform the OSU  
community of the  
resources and programs  
offered by the Queer  
Resource Center.**

**Questions & Comments:**

**737-9161**



Queer Resource Center  
Lunch-In

Thursday, August 15th

12:00



Come have a FREE lunch at  
the QRC (Located in the  
Women's Center)

**Questions About Sex???**

**Ask the Sexpert**

**Question and  
Answer Session  
with Kathy Greaves**

6-7pm in the Women's Center  
Thursday, February 21<sup>st</sup>

Sponsored by:  
Native American Longhouse  
Queer Resource Center



# DRAG SHOW

**FREE:**

anonymous HIV testing

## DRAG SHOW

*"Sushi does Corvallis"*  
**AIDS Awareness Dance**  
Thursday \* January 31,  
2002

**Pick up your tickets @:**

QRC (Women's Center)  
Rainbow Continuum Ofc. (Snell Hall)  
Student Involvement Info. Desk (Snell  
Hall)

**"SUSHI does Corvallis"**

**AIDS Awareness Dance**

**JANUARY 31,**

**MU-Main Ballroom**

**9p.m.-1a.m.**

**\$ 5.00/per ticket**

**\*Tickets available NOW @:**  
**Rainbow Continuum Ofc. (SNELL HALL)**  
**Queer Resource Center (WOMEN'S CENTER)**  
**& in the MU starting January 14th**

Sponsors: Lifestyles Condoms, Queer Resource Center, ASOSU, Rainbow Continuum

KBVR-FM

Public Service Announcement Script

"Sushi does Corvallis"

**DJ-Bricolage Selector**

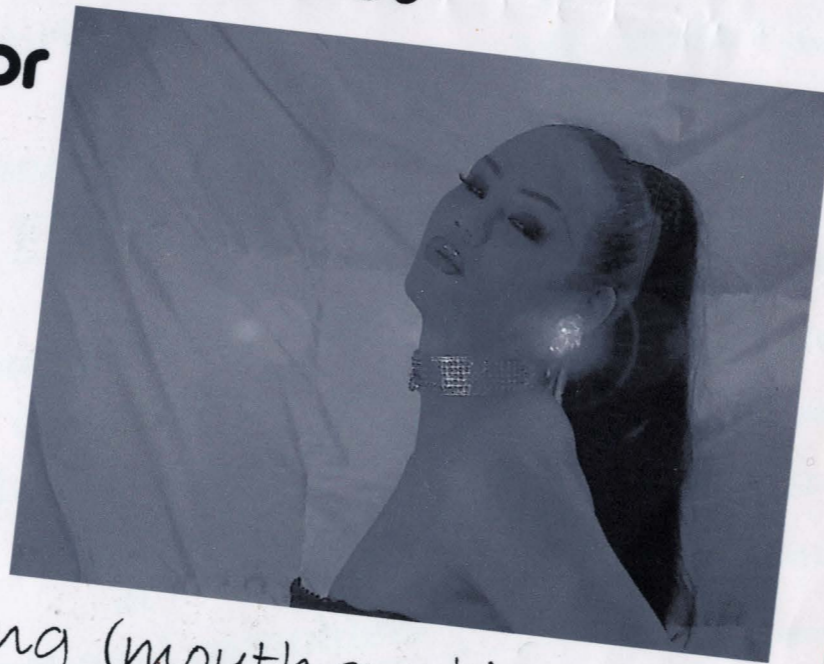
**also appearing:**

**Poison Waters**

**Mickey More**

**Diva Simone**

**& more.....**



FREE-HIV testing (mouth swab)  
FREE-condoms, dental dams, and pamphlets etc.

THURSDAY

AIDS AWARENESS DANCE AND DRAG SHOW

**Sushi Does Corvallis**

THURSDAY • JANUARY 31, 2002 • 9:00PM — 1:00AM • MU MAIN BALLROOM

"Sushi does Corvallis," a Drag Show and AIDS Awareness Dance that will be taking place on Thursday, January 31, 2002, at the Memorial Union-main ballroom. Doors will open at 9p.m. and the fun will go till 1a.m. This event is to promote the prevention of HIV among the Corvallis community. During the evening FREE anonymous HIV testing will be offered, as well as condoms, dental dams, lubricant, and informational pamphlets.

Local resident, Bob Skinner, will discuss his views on living with AIDS.

DJ-Bricolage Selector, will be spinning various tunes ranging from soul to dance.

The Sushi and Poison Waters host the event with other queens that'll blow you away. Buy your \$5.00 ticket NOW at the: QRC-located within the Women's Center,

the Rainbow Continuum Office and Student Involvement information desk-both located within Snell Hall, and starting January 22<sup>nd</sup> within Memorial Union, next to the cafeteria. A Limited number of tickets are available for this event; tickets will

also be on sale at the door at a first come first serve basis. Please call 737-9161 with

any questions and leave a message. And remember-it's for a good cause!

**SPONSORS:** Lifestyles Condoms, Queer Resource Center, Rainbow Continuum, ASOSU, Linn-Benton County Health Services



# An Inside Look At The QRC

By KELLY SHILITTO  
BAROMETER STAFF WRITER

Freshly painted white walls, comfortable couches and bright posters adorn what was a broom closet only one year ago.

The Queer Resource Center, located in a small room in the Women's Center, has come a long way since it was developed last year.

March 14, 2001, in front of hundreds of students that gathered to be a part of the event, the Student Fees Committee approved the inclusion of the QRC in the Student Involvement Budget.

According to Graduate Teaching Assistant with Diversity Development, Christian Matheis, it is that spring day that the QRC "has proven that it is effective and functional."

The center's original objectives were to provide a safe space and a resource for the LGBT community, and also included an educational component for the wider community, Matheis said adding, these objectives have primarily been achieved by sponsoring educational programs and serving as a safe, friendly space for LGBT students.

In spite of the early success of the QRC, opponents voiced disapproval.

"It was a sensitive topic, being new to OSU," Matheis said, adding that the majority of the opposition to the center was voiced in letters to the editor, and also more latent opposition.

"It may be not active, but it's passive protest," Matheis said.

While most new organizations undergo conflict in



QRC, page 3 |

## Derogatory mail causing problems for Greeks, QRC

► Some believe the act was  
an attempt to defame the QRC

By MICHELLE FULLER  
BAROMETER FREELANCE WRITER

Earlier this month, certain OSU fraternity and sorority members received hate mail allegedly sent by employees of the Queer Resource Center.

Fraternity and sorority members whose addresses were listed in the campus directory at their Greek houses received copies of the same letter on Feb 6.

"The letter was sent to individual members of Alpha Chi Omega and Sigma Alpha Epsilon," said Danette Gillespie, diversity development coordinator for OSU Student Involvement. "It was signed off by

| See MAIL, page A3 |

## Mail: Case is still under investigation

Continued from page A1

"your friends at the Queer Resource Center." The number of letters each fraternity and sorority received varied.

"Each received between 10 and 20," said Clinton Downs, a QRC employee.

Members of Alpha Chi Omega and Sigma Alpha Epsilon called the QRC after receiving the hate mail, none of them believing anyone from the QRC had written or sent the letters. QRC employees contacted authorities after the situation was brought to their attention.

"We reported it to the Corvallis police," said Mark Stronccek, a QRC employee. "We went through all the channels to come up with a solution."

QRC employees have read the letter and characterize its language as derogatory.

"The letter is about the relationship between the Greek community and the queer community," Downs said. "The letter threateningly says that relationship is about to change."

No specific threats were made, however.

Stronccek figured the letter might have been intended to defame the Queer Resource Center.

"We felt it was a cheap shot to get rid of the QRC," Stronccek said.

The letters have failed to do that, but QRC employees have had to deal with the letter's repercussions.

Michelle Fuller is a freelance writer at The Daily Barometer. She can be reached at leapinglion@hotmail.com

February 22nd, 2002

May 16th, 2002

## QRC: Funding has more than tripled since last year

Continued from page 1

their formative stages, the QRC is now experiencing some of these problems even a year after its creation.

"All of this struggle that the QRC is going through now would have happened if they spent a couple of years fighting over it to get this established, or as it happened, it got established and then the struggle," Matheis said.

While the QRC was originally granted a \$7,000 budget last year, the figure has increased to \$22,440 for this school year, and will most likely continue to increase in years to come, he said.

The funding is applied towards programs and speakers, as well as pay for the center's staff.

According to Matheis, the typical cultural center budget on campus ranges from about \$42,000-\$46,000, while the QRC's budget is half as large and the center does not have a

permanent location.

Still, according to Clinton Downs, a coordinator at the QRC, the increase in funding will help the advancement of the center, allowing for better working hours for employees, expanded programs and more public relations.

Downs said that the queer community at OSU has been fragmented in the past, and the QRC is attempting to coordinate some of these groups.

"We're still trying to make contact with on-campus communities. We're trying to coordinate groups and people so that were not scattered anymore," Downs said.

Fellow QRC coordinator, Mark Stronccek agrees.

While he recognizes that having several different groups within the queer community has some benefits, "there needs to be a common ground," he said, adding that the QRC is working to include some of these groups.

Both coordinators said the

center has already become a safe space for students to hang out in and ask questions or just study, and they hope that the center becomes an even more comfortable, affirming place for students. Even if they do not choose to utilize the QRC for this purpose, Stronccek believes that the center can be helpful in other ways.

"They (students) don't have to come participate in anything, as long as they know that there is a gay community here and not locked up in a closet somewhere," Stronccek said.

Opponents of the center often ask if the QRC is necessary, Downs said.

His response is that the LGBT community "is an underrepresented group that has a hard time organizing and really being a community."

The QRC and other similar groups are necessary because, "the world is a heterosexual resource center," he said. Fifty-

one weeks out of the year is heterosexual pride week. Why cant we have our one week?"

Looking ahead to the next year, both coordinators said that center's goals include finding a permanent space, acquiring funds comparable to other cultural centers and increasing awareness about the center on campus.

After an effective first year here on campus, Matheis said that the QRC is "here to stay, and it will be for the benefit of the community in the long run."

Sitting on the couch in the center, looking back at the progress made in the past year, Downs reflected that "this used to be a storage area for the Women's Center, and look at it now. It's amazing what you can do with a broom closet."

Kelly Shilitto is a staff writer for The Daily Barometer she can be reached at baro.campus@studentmedia.orst.edu.

## CALENDAR

### WEDNESDAY, MAR. 13

#### Meetings

**Agriculture Executive Council**, 6pm, Withycombe 109. Turn your designs in for the free sweatshirt contest.

**Japanese Student Association**, 6pm, MU Council Room. Please come and meet new friends in JSA!

**United Campus Ministry**, Noon-1pm, Westminster. Learning community. Conversation based on book by Barbara Brown Taylor, "Speaking of Sin."

**United Campus Ministry**, 5:30-7pm, 101 NW 23rd St Westminster House. Dinner, fellowship, signing and Bible study relating your life and faith.

**Extreme Campus Ministries**, 8am, MU 211. Start the day off right! Join us in prayer for our school, homes, nation and needs.

**Lutheran Student Movement**, 5:15-6pm, Luther House 211 NW 23rd. Evening prayer with eucharist. Informal. Biblical. Thoughtful. Relevant.

#### Events

**OSU Department of Music**, 7:30pm, LaSells Stewart center. OSU Concert Band, directed by student conductors, followed by the OSU Symphonic band.

### THURSDAY, MAR. 14

#### Meetings

**BSU Christian Fellowship**, 7pm, MUE International Forum. Focus.

**OSU Amateur Radio Club**, 1-2pm, Snell 229. See the OSU radio shack.

**Extreme Campus Ministry**, 7-9pm, Marketplace West. Come be empowered to succeed and allow God to change your life.

**Alcoholics Anonymous**, 8:30pm, Women's Center. the only requirement is a desire to stop drinking.

**English Student Association**, 4-5pm, Malamud Room, 2nd Fl, Moreland Hall. General meeting. New members welcome & encouraged!

#### Speakers

**Life Sciences Club**, 2:30pm, 2035 Cordley Hall. Slide show & talk on natural history & migration of the California Gray Whale. Given by researcher Carrie Newell.

**Bahai Club**, 7pm, LaSells Stewart Center. The evolution of human spirituality with Dr. Ron Herschel on the Greeks.

#### Events

**Queer Resource Center**, 11-2pm, MU Quad (if bad weather, next to student store). Come by- find out about the QRC, play a game, take a quiz & hang out. Free cake and ice cream @ 12:30.

## CALENDAR

### THURSDAY, APRIL 11

#### Meetings

**OSU Psychology Society**, 5:30pm, Moreland. Welcome back! We will be having Dr. Tricker speaking this week.

**Riverwatch**, 10am-3pm, MU, counter next to Burger King. Arctic National Wildlife refuge info & fundraiser.

#### Speakers

**Horning Lecture Series**, 4pm, MU 206. Horning lecture: "Gene patents and public policy: ethical issues and empirical studies."

#### Events

**Unitarian-Universalist Campus Ministry**, 7pm, MU 207. Celebrating Earth Day. Come and join us if you wish.

**pEMO Radio & Arnold Center Events com**, 7pm, The Arnold Center. Free Concert: The Dead Unknown, Lum, Inked in Blood, Dynasty of Spies, Marc Summers & the Physical Challenge. For more info www.pEMOradio.com

**Queer Resource Center**, 7:30pm Corvallis Public Library. "It's My Life", film on South Africa AIDS activist.



You are cordially invited  
to attend the  
**End-of-the-Year Reception**  
of the

Asian Cultural Center, Lonnie B. Harris Black Cultural  
Center, Centro Cultural César Chávez, Native American  
Longhouse and Queer Resource Center

**Tuesday, June 4, 2002**  
**6—8 PM**  
**Memorial Union 109**

Light refreshments will be served

Please join us in honoring the staff and volunteers that have made the  
Centers a success in 2001-2002!

**Be Informed.**

**Queer Resource  
Center**

qrc@mu.orst.edu  
**(541) 737-9161**



For more information, visit:  
[oregonstate.edu/groups/rcosu](http://oregonstate.edu/groups/rcosu)

**FROM SILENCE TO CELEBRATION**

**IT'S A RAINBOW WORLD AFTER ALL**



**QUEER  
PRIDE  
WEEK**

**MAY 12-17**

**OSU CAMPUS**

BROUGHT TO YOU BY  
**2002 PRIDE PLANNING COMMITTEE**

FOR FURTHER INFO  
& DAILY SCHEDULES  
CONTACT:

**THE RAINBOW CONTINUUM**  
**737-6360**

**THE QUEER  
RESOURCE CENTER**  
**737-9161**

**TUESDAY, FEB. 26**

**Meetings**

**Recreational Sports**, 3-4pm, Mu 211.  
Open hearing on 2002-03 recreational  
sports budget.

**Student Fees Committee**, 4:30-5:30pm,  
MU 209. Budget board presentations.

**European Student Association**, 8pm,  
Mu 110. Weekly Meeting.

**Pagan Student Association**, 5-7pm,  
MU 207. Meeting.

**Lutheran Student Movement**, 11:30-  
1:30pm, Luther House 211 NW 23rd St.  
Join us for lunch & conversation. Come  
& go as schedule permits. \$2.

**OSU Circle K**, 8pm, MU 212. OSU stu-  
dent community service organization.

**Mountain Club**, 7:30pm., International  
Forum. Weekly meeting/slide show.

**American Indian Science & engi-  
neering Society**, 5pm, Native Ameri-  
can Longhouse. Discuss year's events.

**Speakers**

**Queer Resource Center/ Native  
American Longhouse**, 6-8pm,  
women's center. Ask the sextpert: ses-  
sion with Dr. Kathy Greaves.

**ASOSU**, 7pm, MU Lounge. Gubernatorial  
candidate, Ron Saxton, will be address-  
ing the community.

**Women's Center**, 12-1:30pm, MU 206.  
Women in Buddhism, "Choosing Sim-  
plicity."

**Events**

**OSU Pistol Club**, 7-9pm, McAlexan-  
der Field House. Open range. New





# HEALTHY QUEER RELATIONSHIPS



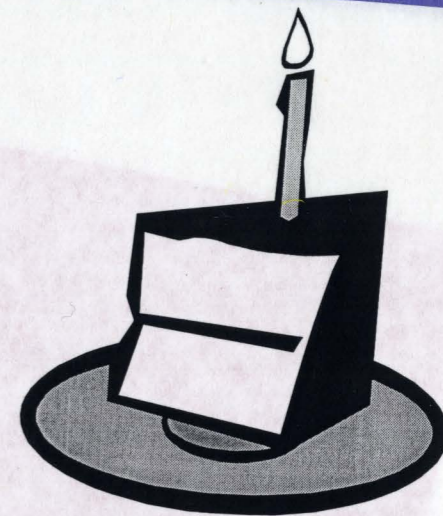
Wednesday, February 27<sup>th</sup> \* 6:30pm  
Women's Center

- Come learn about differences and similarities of same sex relationships and opposite sex relationships.
- Paige Warner from University Counseling and Psychological Services will talk about gender roles in relationships and how these operate in same sex relationships.
- We will also discuss these issues with people who have experienced same sex and opposite sex relationships.

**EVERYONE IS WELCOME!**

Sponsored by:  
Queer Resource Center  
737-9161

## Queer Resource Center's



### 1<sup>st</sup> Birthday Celebration In the MU Quad

### March 14th, 2002

### 11:00 - 2:00

Come find out about the QRC, play a game,  
take a quiz and hang out.

### FREE CAKE AND ICE CREAM @ 12:30



# Arrests made in connection with campout disturbance

► Greek, queer communities are working to increase communication

By **CHRISTEN MCCURDY**  
BAROMETER STAFF WRITER

Last week Oregon State Police arrested four students on charges of disorderly conduct. The arrests were connected to an incident at the Queer Pride Campout May 17.

Brandon Philip Thoreson, Matthew Hoffbuhr, Jared James Coffield and Cory Michael Macaulay have all been connected to an incident in which a firework and a beer bottle were thrown at students camping in the MU Quad.

Bill Oye, director of student conduct and

mediation at Oregon State, said the students were at no point referred to his office.

"The police got information from other sources," he said adding that he believed the students were referred to Oregon State Police by Sigma Pi fraternity.

"If we had been in the middle of that chain and we had released information, we would be in violation of federal law," Oye said.

Three of the four students, Coffield, Hoffbuhr and Thoreson were previously acknowledged to be members of Sigma Pi fraternity. The group issued an apology and said it did not condone the students' actions.

Interfraternity Council president Todd Trezell said since the incident, leaders from the Greek and queer communities have been

working to increase communication and understanding.

Trezell and leaders involved in both the queer and Greek communities have formed a Queer-Greek Action Team, which held its first meeting May 30.

The goal of the team is to increase communication between the two groups.

One issue the two communities are discussing is a series of letters sent to high-profile members in the Greek community. The letters, which are of a harassing nature and signed "QRC," are not on official letterhead and Trezell doesn't think the queer community has anything to do with them.

"No one in the Greek community thinks it's the QRC," he said. "That's ridiculous."

He believes the situation is being investigated by the Corvallis Police Department.

On a lighter note, the action team has talked about holding a barbecue or softball game in the fall, which would allow people in both communities to socialize.

"Anything that can help improve the relationship and increase the education is going to be beneficial," Trezell said. "Both communities have done a lot of work in the last few weeks."

Trooper Harper, the Oregon State Police officer who made the arrest and Sigma Pi executive officers, were not available for comment.

Christen McCurdy is a news reporter for The Daily Barometer. She can be reached at 737-2231 or mcurdch@onid.orst.edu.

May 17th, 2002



June 5th, 2002

# Disturbance interrupts QRC gathering

► Police report states that four men were chased from the scene

By **KATIE WILLSON**  
BAROMETER STAFF WRITER

A firework and beer bottle were thrown at students attending Wednesday night's Queer camp-out by four unidentified males, according to the police report and campers.

Luke Sugie, a freshman in chemical engineering, said he was sitting around the campfire with friends, singing and playing games at 2 a.m. when he heard a commotion.

"I remember hearing a thud and a lot of pop-guns and then a lot of sparks," he said. The students thought it was an electrical problem at first, Sugie said, but they soon realized it was a firework and covered it with a lid from a barbecue.

"That's when we noticed the broken glass," he said. A beer bottle had also been thrown. The students at the campfire ran to a blue box and called campus security.

Trooper Harper received the call at 2:05 a.m. and according to the police report, she chased the four men through campus but lost them behind the Sigma Pi house.

Wes Price, president of the Sigma Pi fraternity, acknowledged that the perpetrators are members of the house.

"The fraternity apologizes and doesn't support this in any way," he said.

The house held a meeting Thursday evening to decide what action will be taken. "They will be suspended," Price said, "and further action may be taken."

He declined to name the men involved.

Sugie said things settled back down around 3 a.m. and students sat at the campfire discussing the incident.

"I think it's sad that they plan these things out," he said. "I kind of expected something to happen though. It's a given people will hate you when you do big events like this." He hopes something positive results in spite of the disturbance.

"People might realize that the life we live is not safe, and that we need a place to be safe on

campus," he said.

Dr. Cheryl Anderson, director of student involvement, views safety as an integral part of the educational environment.

"I'm concerned that we have students who don't feel safe," she said. "We want Oregon State University to be a place where students feel safe and supported in their academic development."

Adam Gretzinger, a sophomore in computer science, certainly doesn't feel secure.

"We shouldn't have to have people sign safety waivers for sleeping in the quad," he said, adding that although no one was hurt, the firework was large and could have easily caused a fire when it landed on the tent, where four people slept.

Nonetheless, Gretzinger said the queer community would not cower in response.

"It's not going to stop us from celebrating Pride Week," he said. "It's not going to re-closet us."

Students, scared and angered by the event, have trickled into the office of Harry Sappington, the assistant director of counseling and

psychological services.

"It was clearly a hate crime and intentionally designed to be intimidating," he said. "It starts to raise levels of fear and questions of safety." As a result of Wednesday night's incident, Sappington will participate in a forum May 21 where students and community members can discuss their feelings and ask questions. The time and location will be announced.

Sappington urges those who feel angry or scared to reach out.

"Lean on your friends," he said. "Let people know how the incident impacted you. It's also a way of educating the OSU community."

He added that students who didn't want to wait until Monday were welcome to go to the counseling center on the fifth floor of Snell Hall.

Anyone interested in attending the forum or voicing their concerns should call University Counseling and Psychological Services at 737-2131.

Katie Willson is a campus news reporter for The Daily Barometer. She can be reached at 737-2231 or willsonk@onid.orst.edu.

# Cultural Centers offer food and fun

► Luncheons to inform students of available services and celebrate diversity on Oregon State campus

By **DD BIXBY**  
BAROMETER NEWS WRITER

A comfortable setting, the chance to meet new people, learn about different cultures and free food.

These are the main themes of the noontime luncheons hosted by each of the five cultural centers over the next month.

Beginning last Thursday, the Asian Cultural Center offered lunch at their building as a kickoff and precursor for the next center's lunch.

They had a large turnout and focused on spreading the word on what their center offers for all students.

According to Clint Kumabe, a senior in computer science and staff member at the Asian Cultural Center, the purpose of the luncheons are concentrated on summertime awareness and getting people "in and out of the centers," as well as showcasing all the centers and giving a brief look at what each one offers.

| See **CULTURAL CENTER**, page 5 |

# Cultural Centers: Events, luncheons planned by various groups

Continued from page 1

Golden Munyaka, a graduate student in education and staff member at the Centro Cultural Cesar Chavez, explained that the cultural centers are a "way of developing leaders within minority groups on campus, and are significant in validating and celebrating the differences of students at OSU." The Centro Cultural Cesar Chavez is planning their luncheon, which will be August 22nd, around the teachings and work of Cesar Chavez, celebrating the dignity of work and labor. They also hope to get some latin dancers for entertainment.

## Cultural Center Luncheons

Thursday, August 1:  
Native American Longhouse  
26th & Jefferson

Thursday August 8:  
Black Cultural Center  
2325 NW Monroe

Thursday August 15:  
Queer Resource Center  
Women's Center

Thursday August 22:  
Centro Cultural Cesar Chavez  
1969 A St.

The Native American Longhouse is serving a Hawaiian lunch this Thursday, August 1st, that includes Kailua pig. Staff member Hope Kalei, sophomore in exercise and sport science, said they plan on giving tours of the center and hopes everyone will "come and see what it's all about."

Anna Woiwor, senior in speech communication, with the Black Cultural Center says they plan on having a BBQ lunch on August 8th, as well as poetry readings by members of the Black Poets Society or anyone who wants to share something. Woiwor also mentioned that anyone who wanted to could

volunteer at 9 a.m. with the cooking on August 8th.

The Queer Resource Center will be holding their lunch at the Women's Center on August 15th. They will have music, perhaps even a live performance. Eric Benjamin Grey, a senior double majoring in biology and philosophy, said that they are working to create a congenial and open atmosphere.

The lunches happen every Thursday at noon (3 p.m. on August 22 at Centro Cultural Cesar Chavez) at the culture centers. Everyone is welcome to visit and come to these summer lunches to enjoy an afternoon, meet new people, learn about cultural services on campus, and of course — eat free food!

DD Bixby is a news writer for the Summer Barometer. She can be reached at baro.news@studentmedia.orst.edu.

July 31st, 2002

OPEN



In The  
**BORDERLANDS**

Come discuss issues of race/ethnicity  
and its interaction with sexuality. Open  
to students of any race/orientation.

**Black Cultural Center**

**Tuesdays at 6:30 (Ending March 12<sup>th</sup>)**

**Sponsored by the Queer Resource Center**

**737-9161**

**Coming  
Out?**

**You're not alone  
at Oregon State!**



**QUEER PRIDE  
WEEK**

**MAY 12-17 OSU CAMPUS**

**ALL EVENTS ARE FREE!**

**FRIDAY, MAY 17**

**Noon - 1:30pm**

**March, Start at Quad**

**8pm - 11pm**

**Drag Show and Dance,  
Free, MU Ballroom**

**Queer Pride Week is brought to you by the 2002 Pride Planning Committee.**

Individual programs are sponsored by the Rainbow Continuum, OSU Women's Center,  
The Queer Resource Center, ASOSU's LGBTQI and Women's Task Forces, ISOSU,  
the Asian/Pacific American Student Union, Hewlett Packard Company and Student  
Involvement's Diversity Development and Women's Center.

**For further info:**

**The Rainbow Continuum, 737-6360 • The Queer Resource Center, 737-9161  
oregonstate.edu/calendar**

**UNIVERSITIES**

**Georgetown VP denies LGBT  
center, citing Catholicism**

WASHINGTON (U-WIRE)— Vice President for Student Affairs Juan C. Gonzalez formally released his decision Friday to deny the creation of a lesbian, gay, bisexual and transgender resource center at Georgetown University. Gonzalez cited Catholicism's emphasis on traditional marriage as his reason in a two-page letter presented to the committee of students supporting the creation of the center.

"We cannot create or support a center whose mission would unavoidably lead to advocacy of sexual behavior outside the context of traditional marriage," Gonzalez said in the document. "I believe that the proposed LGBT center cannot avoid this risk."

Gonzalez said the resource center staff inevitably would find themselves promoting untraditional sexual practices, which would challenge the Church's teaching university policy.

Gonzalez was careful to distinguish between promotion of nontraditional practices — which is unacceptable according to the Bible — and acceptance of untraditional practices, which is integral to Catholic beliefs.

— Charlotte Nichols  
The Hoyu (Georgetown U.)



## EDITORIAL

# Yeas & Nays

**N**ay to the guy with black hair and a blue bike who ran over our city editor. She may have been standing in the bike lane but she still has feelings.

**Yea** to peach schnapps.  
**Nay** to the smell of peach schnapps the next day.

**Yea** to the recent meetings between Greek and Queer community members. When these two groups get together, it should be one helluva party.

**Nay** to us for stereotyping Greeks and Queers as party people. We know some of them, and despite their images, they really are no fun at all.

**Yea** to the recent meeting between the College Republicans and Democrat Ted Kulongoski supporters. When these two groups get together ... oh wait, nevermind.

**Nay** to people with too much cologne and perfume. Nice scent, must you marinate in it?

**Yea** to the World Series. Guess what ... the Yankees aren't in it and it's actually interesting.

**Nay** to horses, neigh.  
**Yea** to colorful fall leaves for making our campus even more festive.

**Nay** to colorful leaves for getting in our copy editor's longboard, causing her to fall in front of everyone in the quad.

**Yea** to feminine hygiene products for keeping all the females hygienic.  
**Nay** to feminine hygiene product commercials for making males uncomfortable while watching TV.

**Yea** to the upcoming Dad's Week-end. We can't wait to find ourselves some hot dads ... the walk of shame never looked so old.

**Nay** to dads who vomit while visiting their kids. One would think by age 55, they would know their limit on Mad Dog.

**Yea** to cheer sex, for raising the hopes of lonely, drunk sports fans everywhere. For a moment they see the promised land and it is hot.

**Nay** to cheer sex. It is so fleeting ...  
**Nay** to how hard it is to find a smart, fun and compatible person to share quality time and fulfilling moments with.

**Yea** to dating the hot, dumb guy or girl. Everyone needs that experience at least once in his or her life.

**Yea** to everyone who gave us suggestions at the recent Student Involvement Fair. You get a free mug and then bash us about how 'Police Beat' should be longer ... rude!

**Yea** to Anna Nicole Smith for making us all feel smart and beautiful in comparison.

**Nay** to Anna Nicole Smith. In order to get those mood enhancing effects we actually have to watch the show.

**Nay** to the expected rise in tuition. We have so many things we need that money for, like hygiene products, basketball games and cable bills to watch Anna Nicole. And peach schnapps.

**Yea** to the candidates who are gracious with their presence. It's nice to see them face to face and ask them how they plan to screw us next!

**Editorials** serve as a platform for Barometer editors to offer commentary and opinions on current events, both national and local, grand in scale and diminutive. Opinions here are a reflection of the Editorial Board's majority.

## CALEDNAR

FRIDAY, OCT. 11

### Events

**Rainbow Continuum**, 9-11pm, Women's Center. Dance and social event celebrating National Coming Out Day and Queer History Month.

**Rainbow Continuum**, 6pm, MU ballroom. Dinner event for National Coming Out Day. Free and vegan-friendly.

**Rainbow Continuum**, 2-3pm, Women's Center. "The Coming Out Process" with Sam Sappington. Part of National Coming Out Day.

**Rainbow Continuum**, 11-1pm, MU Quad. National Coming Out Day booth information on Queer History Month, Queer resources on campus.

**Queer Resource Center**, 6pm, MU Ballroom. FREE night of food and entertainment to celebrate National Coming Out Day. For more info call the QRC at 737-9161.

# LifeStyles

Clinton wrote this

### Community

## Open dialogue has been great

Students who walked through the MU Quad from Feb. 25 to March 1 probably noticed the large signs and tables promoting "Second Amendment Awareness Week." These tables included references to "war," "killing" and other brutality related items.

I find it completely reprehensible that the College Republicans and other student fee-funded organizations would print and distribute offensive, brutal and even nauseating materials in a place

where normal people walk. Furthermore, I cannot understand who or why someone at Student Involvement gave permission to the College Republicans to place these tables in the MU Quad.

Our campus is quickly being saturated with Republican propaganda. First it was borderline riotous posters, now it is offensive advertisements in our Quad. I, nor anyone else opposed to the College Republicans, have a problem with people choosing to kill other people, but I do have a problem when their lifestyle is forced upon me and my proud university.

It is time to put an end to this nonsense. The prestige of our university is being tarnished by the institutionalization of immorality. We, as students, must act now to end this embarrassment, otherwise I fear that influential alumni who contribute millions of dollars to OSU may not respond kindly to the news of the College Republicans.

The preceding letter is satire. The views expressed are not necessarily my own views. I do think that the entire campus is a wonderful place to discuss issues with other students and to promote programs that bring people together.

The preceding letter is written to show how unreasonably Lee Vasche responded to the Drag Show advertisements. The College Republicans and the Queer Resource Center do not have much in common, except for one thing: We serve the entire Oregon State University community by providing information and opportunities to students, staff and faculty.

I think that this entire letter to the editor session describes how great of a university I am enrolled in. Where people, no matter what their age, gender, sexuality, religious beliefs, political beliefs, ability level, class or race, can safely come together with other people facing the same issues and access information about other groups they might not understand. I am proud to be at Oregon State University.

CLINTON DOWNS,  
Freshman in biology

May, 2002

To: Rebecca Sanderson, University Counseling and Psychological Services  
Dr. Larry Roper, Vice-Provost for Student Affairs  
Timothy White, Provost and Executive Vice-President

I, \_\_\_\_\_, am signing this statement to formally protest the termination of Sam Sappington as an employee of University Counseling and Psychological Services at Oregon State University.

Sam Sappington, as the only openly gay male member of the UCPS staff, currently fulfills a vital role within the university. This role is absolutely necessary to maintain the current level of counseling and educational services to all students. The skills and expertise he shares with the students of OSU, in particular LGBTQQIA students, constitutes a significant portion of a service to students in an area that is already inadequate to meet the needs of the campus community. With no intention of replacing the services that he provides on this campus, Sam Sappington's termination is shortsighted and inexcusable. The decision to terminate these services was not put before a student advisory process despite the commitments that UCPS has to OSU students.

The deceptive budgetary excuses that have been developed by UCPS administrators within the last few months to justify Sam Sappington's termination are unacceptable. UCPS administration has options other than contract termination, which are available to them in order to maintain the services that Sam provides.

I am urging you to re-instate Sam Sappington as a member of the UCPS staff, and to preserve the already limited services on this campus.

## 1 NIGHT ONLY!

• FREE BOWLING  
• EVERYONE WELCOME

Tuesday, April 30  
6 p.m. - 8 p.m.  
MU Rec Center



Come bowl and learn about upcoming events, programs, and services that each cultural center at Oregon State University has to offer you:

- Asian Cultural Center
- Black Cultural Center
- Native American Longhouse
- Central Cultural Cesar Chavez
- Queer Resource Center

If you have any questions, please call 737-9161 (QRC).

**Queer Resource Center Office Hours:**

(located in the Women's Center)

**Monday** 10 a.m. - 1 p.m. and 2 p.m. - 4 p.m.

**Tuesday** 11 a.m. - 7 p.m.

**Wednesday** 11 a.m. - 2 p.m. and 3 p.m. - 7 p.m.

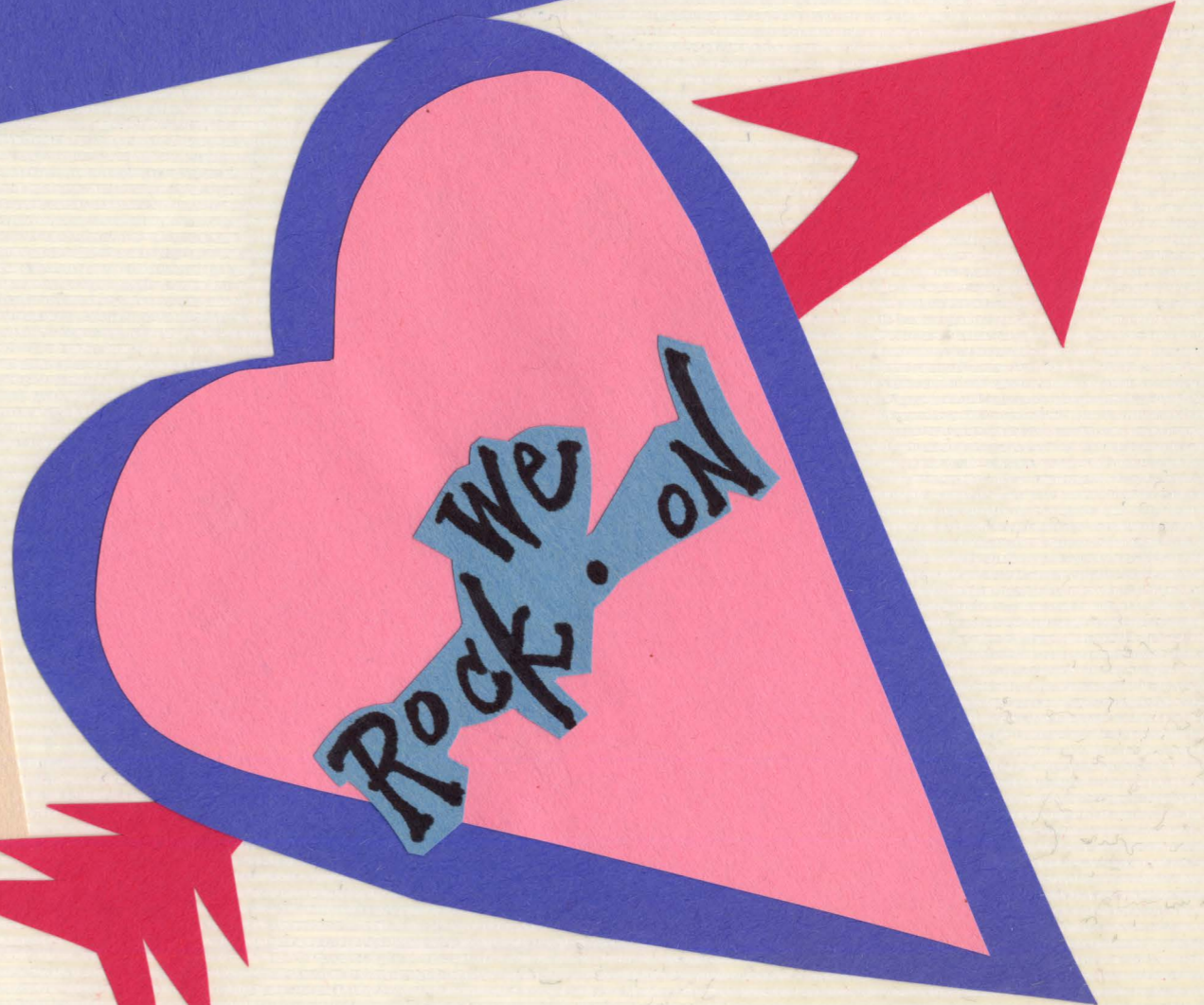
**Thursday** 11 a.m. - 3 p.m.

**Friday** Noon - 3 p.m.

\*Hours listed above are subject to change.

If you have any questions, please call 737-9161 (QRC).







# OSU Celebrates Queer History Month and National Coming Out Day

*Coming out is a journey, not a destination.*

Coming out is:

- **Identifying** as lesbian, gay, bisexual, transgender or queer.
- A **unique** personal journey lasting a **lifetime**.
- Simply being **true** to yourself, when nearly everyone assumes you are straight.
- Realizing that **now** is the time to live up to **your own** expectations.

On October 11 National Coming Out Day is celebrated with workshops, open mics, rallies, concerts and discussion groups around the nation. All of this activity is aimed at honoring the lives of gay, lesbian, bisexual and transgendered people in the places they learn, live, worship, work and play.

The OSU LGBTQQI and Ally community would like to offer our understanding and assistance to returning and new undergraduate and graduate students, and faculty and staff — of any religion, race, ethnicity, creed or national origin. All are welcome to attend the many Queer History Month events on campus and learn about what it means to be an LGBTQQI person.

## Celebrating and Supporting the LGBTQQI Community at Oregon State University

Alix I. Gitelman	Ruth Vondracek	Tim Knight
Cindy Frederick	Brent S. Steel	Robert Tucker
Beth Brown	Tim Jordan	Jodi Nelson
Mary Caughey	Stephanie Hamington	Norman E. Elwood
Shirley Dodsworth	Tulley Long	Rose Lacey
Barbara Balz	Deb Mott	Michaela Meiser
Mina R. McDaniel	Leah Gorman	Marty Roberts
Claire A Bennett	Karen White	Joe Kerkvliet
Angela DeHaven	Joseph Krause	Eric Benjamin Grey
Bonnie Avery	Christopher J. Bayne	Lizbeth Gray
Dave Conklin	Danette C. Gillespie	Kelli Eberlein
Nancy Creel	Jessica Rykken	Bonnie Parks
Russ Born	Deana Grobe	Will Sheppy
Mina Carson	Elizabeth Nielsen	Laurie M. Bridges
Julia Mabry	John Selker	Elizabeth Hoffman
Melinda Brown	Teresa L. Ashford	Larry D. Roper
Margaret W. Fox	Christian Matheis	Karl McCreary
Tina Withrow-Robinson	Lani Roberts	Josh Ellis
Anisa Zvonkovic	Dennis Hall	Shirley Scott
Patricia Muir	Catherine Williams	Bert Epstein
Moira Dempsey	Cindy Empey	Angelo Gomez
Lisa Hoogesteger	Tiffany Jackson	Office of Affirmative
Alix I. Gitelman	Dana McGuire	Action and Equal
Mina McDaniel	Karina J. Nielsen	Opportunity
Nancy Kyle	Robyn St. Clair	Julia Richards
David McMurray	Sandra Uesugi	Erlinda Gonzales-Berry
Parcella Provence	Jana Zvibleman	Kelsey Miller
Jo Alexander	Jennifer Travers	Ruth Erin Carter
Ann Robinson	Rebecca L. Johnson	Patricia Lacy
Anna B. Marin	Judith Langridge	Jennifer Connor-Smith
James W. Good	Rubin Landau	Laura Wilson
Mary Prucha	Jaylene Sheeley	Maggie Neel
Liz Cole	Rick Eckel	Deborah Rubel
Linda Henry	Valerie Rosenberg	Ellen B Taylor
		Sarah Nelson



OCTOBER 11

Susan Wood	Keith Olsen	Don Streeter
Judy Dahlem	Marge Stevens	Derron Coles
Jose Antonio Oroasco	Mark A Williams	Diane Belair
Susan Gilmont	Susan G. Merle	Jennifer Almquist
Tom Unzicker	Alana Jeydel	Timothy Stover
Dave Wing	Camille Freitag	Ina Daily
Kirsten Petersen	Richard Watts	Anne Gilles
Christi Sheridan	Lois Krzeszowski	Janet Christy Phillips
Gigi Ann Bruce	Charlene C Clark	University Counseling
Janet S Nishihara	Joe McGuire	& Psychological
Erika Nava	Phyllis S. Lee	Services
Richard Thies	Michael Bothwell	Jo Casselberry

Prudence Miles	George Beekman	Heather Soyster
John Sykes	Terri Tower	Andi Charlton
Susan Cleary	Melinda Shell	Christie Partch
Holly Bell	Linda Paschle	Monte Guerber
Edie Blakley	Leslee Lucas	Jonathon Walls
Kristi Deschesne	Tim White	Gwil Evans
Andreas Waldkirch	Dave Craig	Marianne Vydra
Peggy Mezger	David Bensel	Valerie Schiro
Nita Phillips	Benjamin Nice	Karen Fassnacht
Melanie Edwards	Amy folz	Andrew Murison
Tom Munneryn	Rebecca Warner	Joey Ward
Richard Davis	Eric Counts	Luke Sugie
Nancy Baumeister	Brandon Stevens	Michael Fromherz
Lynn Kelly	Shannon Proctor	Marforie A Reed
Gregory Mulder	Nathan Boltseridge	Megan Pogue
Pat Kight	Lori Cramer	Tulley Long
Roger Weaver	DD Bixby	Deb Mott
Paige Warner	Lars Maxfield	Leah Gorman
Rev. Beth Crawford	Adam Gretzinger	Karen White
Sriyanthi Gunewardena	Robyn Deblock	Joseph Krause
Chris Langdon	Heather Hybarger	Christopher J Bayne
Lorene Hales	Jane Osborn	Heather Lee Soyster
Robin Ryan	Chris Wilson	Garry Browning
Kate Dickersom	Matt Chin	Ann Mintie
Chester P Bateman	Michael Stoops	Pat Ketcham
David Rapoza	Jillian Smythe	Sandy Tsuneyashi
Bill Oye	Ashley Jackson	Maria Kavanaugh
Manuela Huso	Becky Romano	Carol Caughey
Megan Pogue	Jake Wolff	Megan Hyland
Sharee Cooper	Amanda Gzik	Leslie Burns
Laura Rice	Tara Hicks	Bess Walsh
Rob & Jennifer Specter	Diane Haase	Mariette Brouwers
Kelli L. Larson	Rebecca	Marcey Bamba
Ed Kolbe	Van Wormer	Beth Dyer
David Wooster		

and Many other OSU Students, Staff and Faculty!

## OSU Queer History Month Events

**Wednesday, October 16**

"Students and the Queer Movement"

4 p.m. - 6 p.m.

Women's Center

**Wednesday, October 23**

"Race/Sexuality in the Political Venue"

6:30 p.m. - 8:00 p.m.

Black Cultural Center

**Thursday, October 24**

"Being Out in the Work Place"

4:00 p.m. - 5:00 p.m.

Women's Center

**Wednesday, October 30**

"Domestic Violence Between Same Sex Couples"

3:00 p.m. - 4 p.m.

Women's Center

**ALL EVENTS FREE**

**BE INFORMED**

**Queer Resource Center**  
737-9161

Located in the Women's Center/Benton Annex  
qrc@mu.orst.edu

**BE INVOLVED**

**Rainbow Continuum**  
737-6360

Meetings: Monday @ 7pm in the Women's Center.  
rcosu@mu.orst.edu  
oregonstate.edu/groups/rcosu

**BE INFLUENTIAL**

**ASOSU Queer Affairs**  
**Task Force**  
737-6355

queer.affairs@mu.orst.edu





ALBUM STYLE #JMV-207  
PIONEER PHOTO ALBUMS, INC.  
9801 Deering Avenue,  
Chatsworth, Calif. 91311  
USE REFILL #JMV  
MADE IN CHINA



