

THE

'12-'13

PRIDE

CENTER

meet

them



staff

Ryland



internal

C H A R L I E



C h a n g
B a n g

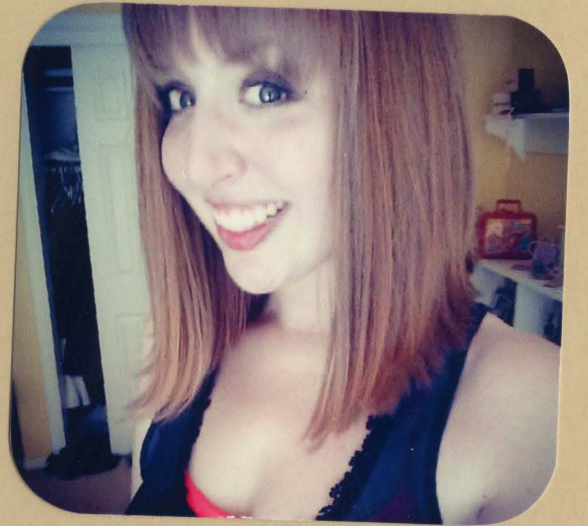
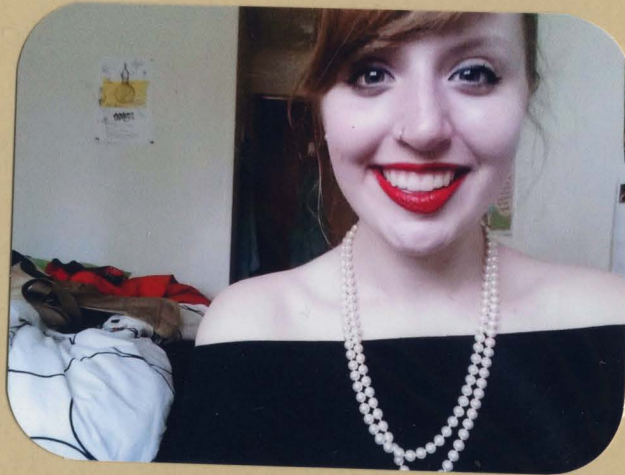


E X T E R N A L

MOLLIE

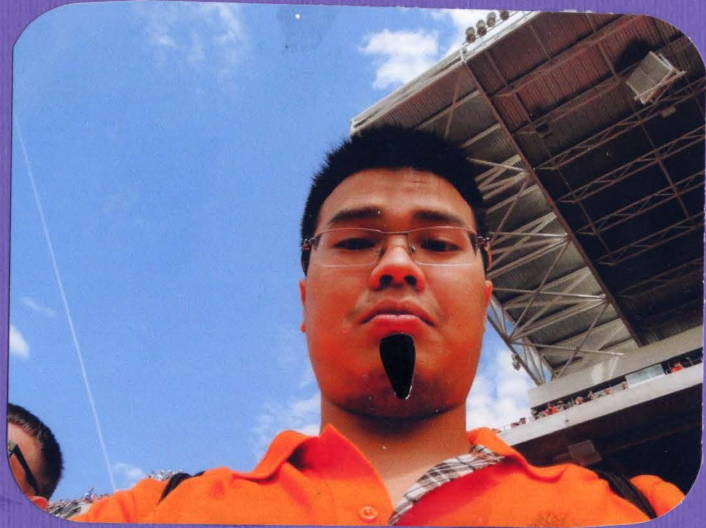


DAS
BOOT



GRADUATION
DESIGNER

P E T E R



C O M M U N I T Y

O U T R E A C H

R
a
C
a
L
a
H
e

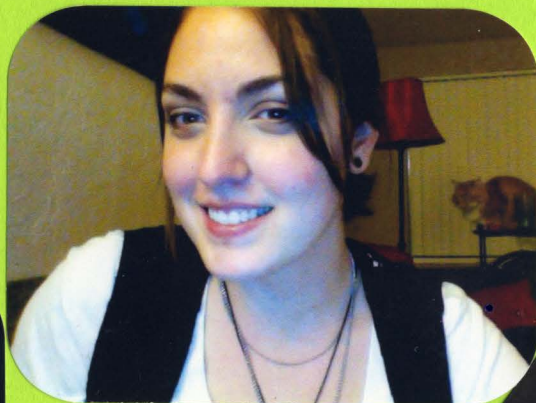


P
U
B
L
I
C

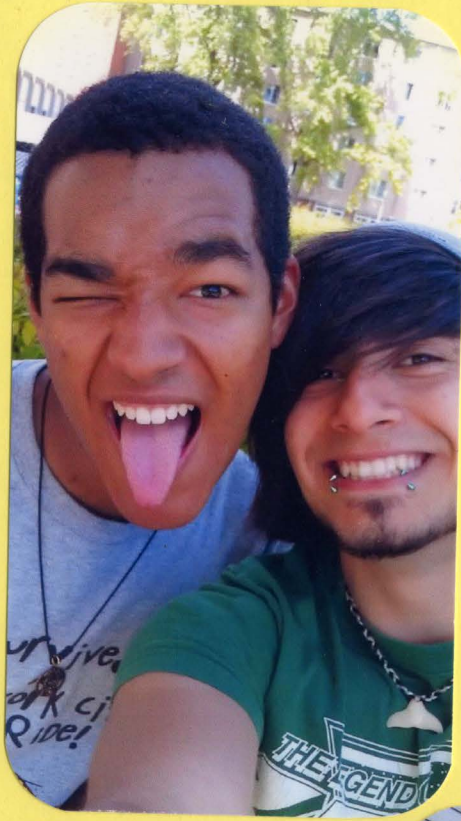


a
t
i
o
n
s

BRICT AND SUGAR WIVES



o w e n



a c t i v i t i e s



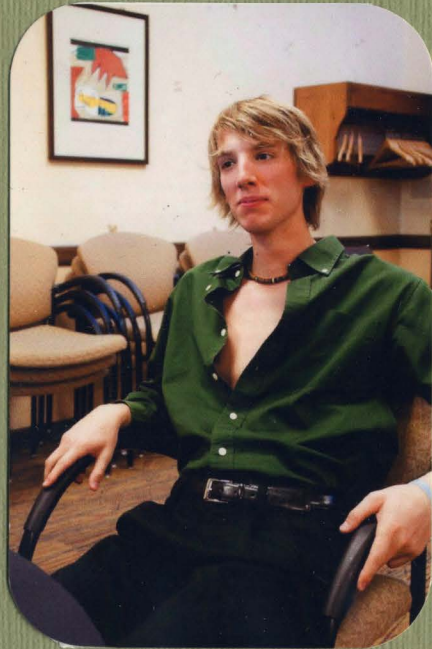
LUKE



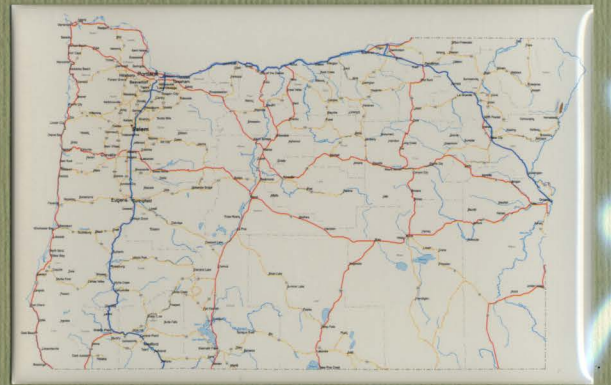
OFFICE

ASSISTANT

a u s t i n



Captain
Compost



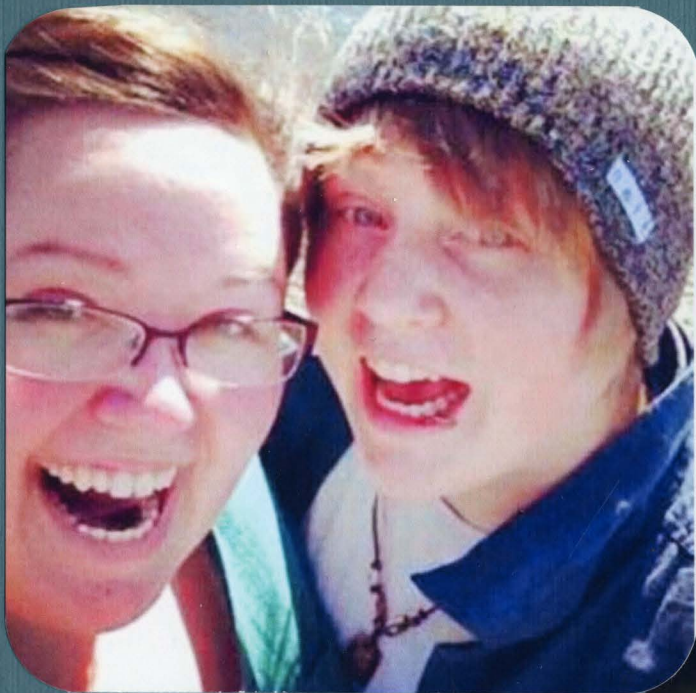
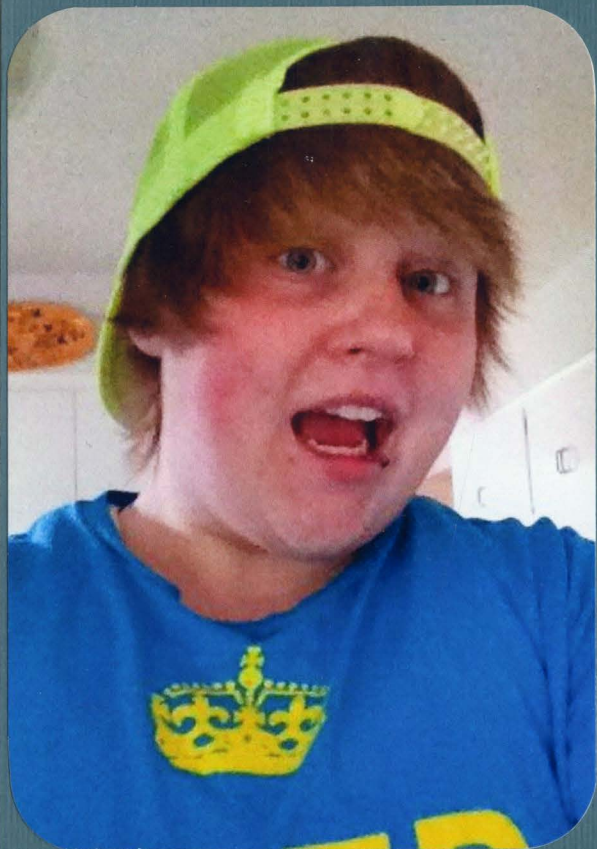
o f f i c e

a s s i s t a n t

C H A N D L E R

HI, WE UNDERSTAND YOU ARE 40

AND STILL NOT MARRIED.



O F F I C E

A S S I S T A N T

AMERICAN CRAFTS
THE COLOR OF MEMORIES

