

OREGON STATE

1960



FOOTBALL

CONTENTS

OSC history, facts, staff biographies, ticket information	2-6
Telephones, papers, team travel itinerary, years staff service	7-8
Eggers' itinerary, population, Rook schedule	9
Future grid slates, OSC all-Americans, figures on late PCC	10-11
Best coaching marks, titles won, athletic directors	12
Best season attendance figures, Rose Bowlers, Shrine players	13-14
Highest, lowest scores, grid captains, OSC men in pros, awards	15-16
Best years OSC, Big games, largest crowds, rally girls	17-18
61 years football at OSC, year by year attendance, etc.	19-21
Intersectionals, Paulson & Miller, etc.	-22
Individual leaders, all-time OSC records, men now coaching	23-31
Coach biographies, 1959 individual & team statistics	32-37
General outlook, lettermen, 3-deeps, alphabetical rosters	38-41
Thumbnails, specialists, pronunciation guide	42-44
The Opponents, past records	45-50
All-time OSC grid scores, 1960-61 basketball slate	51-56



John H. Eggers
SPORTS PUBLICITY DIRECTOR

Office Phone, PLaza 3-4211, Ext. 430
Home Phone, PLaza 3-6178
Office Address, Coliseum 107, Corvallis
Home Address, 727 N. 35th St.

Oregon State College

Oregon State College, the largest institution of higher learning in the state of Oregon, was established as a land-grant school on October 27, 1868, under the provisions of the Morrill Land Grant Act. It was the state's first venture in the field of higher learning, and was originally named Corvallis College.

The state wanted to establish a college as early as 1851, and had selected Corvallis, then known as Marysville, as the site. The legislature then reversed itself and decided to construct the college in Jacksonville in southern Oregon.

However, the people of Corvallis went ahead and erected an academy in 1858, operated by the Methodist church. With the adoption of the Morrill act the state took over partial control, and assumed full control in 1885. In 1868 the name was changed to the State Agricultural College of Oregon, later to Oregon Agricultural College, and in 1953 was changed to the present Oregon State College, although popular acclaim had brought about the present name as early as 1927.

The college campus proper, as well as adjoining agricultural lands, consists of about 4,000 acres, with increases being made yearly as the institution grows in population and need. In addition to the campus area, the Agricultural Experiment station at the college administers and utilizes approximately 24,000 acres, mostly county and federal owned.

The school of forestry owns and administers another 13,300 acres in the Peavy arboretum and the McDonald and other forested areas near Corvallis. These lands are used to teach forestry students actual forest practices through on-the-job training, as well as the research projects for the state and national forest services and the many timber companies located throughout the Northwest.

In addition to the schools of agriculture and forestry, degrees also are given in Humanities and Social Science, Business and Technology, Education, Engineering, Industrial Arts, Home Economics, Pharmacy, Agriculture, Science and the Graduate school. A student indeed as a wide choice of curriculum at OSC, with allied subjects in all fields.

Oregon State College is located in the picturesque city of Corvallis, named for its location in the heart of the Willamette valley of western Oregon. Most recent population (1960) of Corvallis was 21,353, making it Oregon's 5th largest city. Metropolitan Portland is only 80 miles to the north and the Pacific ocean 60 miles west. Corvallis lies in between the Cascade and Coast ranges; with agriculture and lumber forming the chief industries.

Approximately 8000 students are enrolled for the 1960-61 school year, with an enrollment of 10,000 predicted within several years. The college is in the midst of a vast building program, with many new dormitories and other structures spread throughout the beautiful campus.

Some of the better-known buildings include the Memorial Union (student union), Benton Hall, the Coliseum, and Agriculture hall, although newer structures such as Cordley Hall are just as eye-catching. Parker stadium, built in 1953 for football, seats 28,000 fans. Dr. A. L. Strand has served as president of OSC since 1942, while R. S. Keene has been the athletic director since 1947.

The state board of higher education has already recommended that the state legislature officially change the school name to "Oregon State University" at its next session.

The Administration

President: Dr. A. L. Strand (Montana State)

Dean of Administration: Milosh Popovich (OSC)

Dean of Men: Dan Poling (OSC)

Faculty Athletic Representative: Glenn Holcomb (Michigan)

Registrar: D. T. Ordeman (Washington & Lee)

Facts on OSC

Town: Corvallis (Population 21,353)

Enrollment: 8,000

When Established: 1868, as land-grant institution

School Colors: Orange and Black

Nickname: Beavers, Orangemen

Gym—Coliseum (capacity 11,000)

Football—Parker Stadium (capacity 28,000)

Baseball—Coleman Field (capacity 4,000)

Track—Bell Field (capacity 3,000)

Golf—Corvallis Country Club

Tennis—OSC Courts

The Staff

Athletic Director: R. S. "Spec" Keene

Athletic Business Manager: Jim Barratt

Head Football Coach: Tommy Prothro

Sr. Assistant: Bob Watson

Line Coach: Bob Zelinka

Asst. Coach: Bud Gibbs

Asst. Coach: Ron Siegrist

Asst. Coach: Doug Bradley

Department Bookkeeper: Esther Guerber

Department Secretaries: Betty Jorgensen

Carol Fessenden

Bette Hogan

Trainer: Bill Robertson

Team Physicians: Dr. Waldo Ball, Dr. Verne Gearey

Equipment Manager: Jimmy Demith

Band Director: Ted Mesang

Publicity Director: John H. Eggers

Administrative Asst: Bill Neland

STAFF



DR. A. L. STRAND
President of Oregon State College



SPEC KEENE
Athletic Director



BILL NELAND
Administrative Asst.



JIM BARRATT
Business Manager



GLENN HOLCOMB
Faculty Athletic Representative



BILL ROBERTSON
Trainer

ATHLETIC STAFF

ROY S. "SPEC" KEENE, Oregon State's foremost exponent of good-will and understanding in athletics, long has been recognized as one of the top men in his field. As athletic director at OSC since 1947, he has spearheaded an expansion program that has resulted in this school having an overall athletic program rivaled by few nationally.

Probably nobody ever connected with athletics here has had more friends and fewer enemies than Spec Keene. He combines his vast experience and background with a warm, personal touch, and through the year's he's won a lot of friends for Oregon State.

Keene serves on the executive committee of the NCAA, once was president of the Pacific Coast conference athletic directors association and is chairman of the regional NCAA selection committee in basketball. All one has to do is take a glance at OSC athletic schedules, and they'll find Keene is well-known and well-liked nationally.

Under his direction and planning, OSC built 28,000 seating Parker stadium for football and 11,000 seating Coliseum for basketball. The Beavers have a separate field for every sport, and through Keene's efforts, major awards are now given in football, basketball, baseball, track, wrestling, swimming, golf and tennis.

It's just natural that Keene would be serving his alma mater so well, for he's an Oregon Stater from way back. He was student body president here in 1921, as well as an outstanding baseball player, and at one time even served as an assistant coach for the Beavers.

His first job out of college was that of head coach at Corvallis high, before joining the OSC staff. Next step was OSC where he remained until 1926. Then came assignment as head football coach and athletic director at Willamette university in Salem, where he remained 15 years. At Willamette, his grid machines were the scourge of the Northwest conference and many of his players won little All-America honors.

Spec returned to OSC in 1947 as athletic director and has been on the job ever since. He's a past member of the state of Oregon parole board and served his country well in both World War I and World War II. In the first conflict, he was an army lieutenant, and in the last war was a lieutenant-commander in the navy.

JIM BARRATT, athletic business manager and Keene's top aide, year in and year out tackles one of the toughest assignments of all—making people happy. He's in charge of all ticket sales and various other promotions connected with the athletic program. His unbounding enthusiasm and attention to details helps establish Jim as one of the top men in his field. He wears a broad smile at all times and is a firm believer in strong public relations. Barratt originally is from Heppner where he was a high school star in football, basketball, tennis and track, winning 10 varsity awards. Jim served in the navy in World War II, and graduated from OSC in 1950. He was editor of the Daily Barometer, official school publication at OSC, his senior year and a member of virtually every honor organization on campus. Jim first became assistant alumni director in 1950, moving to the athletic department at the close of the 1951 football season. For a number of years he was head golf coach here, but press of other duties forced him to give up that post two years ago. He still keeps a hand in the coaching line, however, as freshman golf coach.

BILL NELAND, administrative assistant, is truly "the man who does everything." This top troubleshooter for the athletic department directs the state track meet, the state wrestling tournament and many other campus events. He is well qualified to handle any assignment that may arise. Neland officially spends three-fourths of his time assisting Jim Barratt and one-fourth of it in John Eggers' office. He also edits all athletic programs, and along those lines won a national achievement award several years ago. Bill went to Central Catholic high school in Portland, and came to OSC in the fall of 1947. After three years in the Marine Corps he returned to school at OSC and has been on a full-time basis in the athletic department for five years.

BILL ROBERTSON, trainer, has been chief of the OSC tape brigade for 14 years, and long has been one of the most popular citizens in the Corvallis community. Famous for his always well-received vocal rendition of "Casey At The Bat" and dozens of other recitations, Bill is much in demand at banquets and social gatherings. The athletes call him "Rope-sole," and his reputation as an athletic trainer ranks right near the top of that field. Robertson originally is from Vancouver, B.C., but became an American citizen many years ago and has lived in the Pacific Northwest ever since. He served in the army in World War II, and saw duty in both Italy and the Aleutians. Bill is a graduate of OSC.

JOHN EGGERS, sports publicity director, recently observed his 10th anniversary on the athletic staff at OSC. He joined the staff on July 1, 1950, as an assistant to director Irwin Harris, and was moved up to the top spot on July 1, 1952. Eggers was born and raised in Pendleton, the "Round-Up City" of eastern Oregon. He was an all-state basketball player at Pendleton high, a prep teammate of Lew Beck who later went on to win all-America fame at OSC and play in the Olympic Games. Eggers played one varsity basketball season at Willamette while only a freshman before enlisting in the Navy for World War II. After discharge, he attended OSC from the fall of 1946 through 1949. Before returning to the OSC staff, he worked for one year as a sports writer on The Oregonian in Portland.

OSC TICKET INFORMATION

Oct. 1 Houston at Portland—8 p.m., Reserved seat \$4.00
Oct. 22 Washington at Portland—1:30 p.m., Reserved seat \$4.00
Oct. 29 California at Corvallis—1:30 p.m., Reserved seat \$4.00
Nov. 19 Oregon at Corvallis—1:30 p.m., Reserved seat \$5.00

BEAVER TICKET AGENCIES

Portland—J. K. Gill's
Vancouver—Hoffman's
Oregon City—Jack & Jill Shop
Astoria—Steinbock Pharmacy
Medford—Barker Men's store
Eugene—Mattox Pipe Shop
Lebanon—Reeve's Clothing
Albany—Vince Barrett Sporting Goods
Roseburg—J. C. Sporting Goods
Salem—Bill Beard Sporting Goods
Independence—Taylor's Drugs
Corvallis—Coliseum 103, Phil Small's Downtown store,
Wagner's.

HOME TELEPHONE LIST

(Regular department of athletics office number is PLaza 3-7501, although department also has college number of PLaza 2-4211, Extension 254. Athletic News Bureau office number is PLaza 2-4211, Extension 430. All home numbers of staff members listed below.)

R. S. "Spec" Keene, Director of Athletics—PLaza 3-3617.
Jim Barratt, Athletic Business Manager—PLaza 3-3491.
Bill Neland, Administrative Assistant—PLaza 3-4541.
John Eggers, Sports Publicity Director—PLaza 3-6178.
Tommy Prothro, Head Football Coach—PLaza 2-1579.
Bob Watson, Senior Assistant Football Coach—PLaza 2-1542.
Bob Zelinka, Line Football Coach—PLaza 3-8377.
Bud Gibbs, Assistant Football Coach—PLaza 2-3107.
Ron Siegrist, Assistant Football Coach—PLaza 2-3484.
Doug Bradley, Assistant Football Coach—PLaza 2-4145
Bill Robertson, Athletic Trainer—PLaza 3-4108.
Jimmy Demith, Equipment Manager—PLaza 2-2664.
Dan Granneman, Parker Stadium groundskeeper—PLaza 3-7401.
Esther Guerber, Department Bookkeeper—PLaza 3-4715.
Slats Gill, Head Basketball Coach—PLaza 3-6781.
Paul Valenti, Assistant Basketball Coach—PLaza 3-3731.
Ralph Coleman, Head Baseball Coach—PLaza 3-3630.
Sam Bell, Track Coach—PLaza 2-3380.
Vern Martin, Head Golf Coach—PLaza 3-6213.
Irwin Harris, Head Tennis Coach—PLaza 3-5027.
Dale Thomas, Head Wrestling Coach—PLaza 2-1759.
Bill Winkler, Head Swimming Coach—PLaza 3-8628.
Dr. Waldo Ball, Team Physician—PLaza 3-3464.
Dr. Verne Gearey, Team Physician—PLaza 3-5914.
Glenn Holcomb, Faculty Representative—PLaza 3-8265.

Daily Newspapers In Oregon

Portland—The Oregonian, The Journal, The Reporter.
Salem—Oregon Statesman, Capital-Journal.
Eugene—Register-Guard.
Corvallis—Gazette-Times.
Albany—Democrat-Herald.
Ashland—Tidings.
Astoria—Astoria-Budget.
Baker—Democrat-Herald.
Bend—Bulletin.
Coos Bay-North Bend—The World.
La Grande—Evening Observer.
Grants Pass—The Courier.
Klamath Falls—Herald & News.
Oregon City—Enterprise-Courier.
Pendleton—East Oregonian.
Roseburg—News-Review.
The Dalles—Chronical
Medford—Mail-Tribune.

Corvallis Outlets, Press and Radio

Jack Rickard, Sports Editor, Gazette-Times.
Gene Thornton, Sports Editor, Daily Barometer, OSC.
Bob Hinz, radio KOAC and KOAC-TV.
Bill Hurley, Manager, KLOO
John Brazell, Sports Director, KFLY.
George Scott, Sports Editor, Democrat-Herald (Albany)

WHERE THE BEAVERS STAY WHEN ON THE ROAD

Southern Cal at Los Angeles—Huntington-Sheraton hotel, Pasadena.

Iowa at Iowa City—Montrose hotel, Cedar Rapids.

Indiana at Bloomington—Marott hotel, Indianapolis.

Idaho at Moscow—Desert Caravan Inn, Spokane.

Wash. State at Pullman—Desert Caravan Inn, Spokane.

Stanford at Palo Alto—Rickey's Studio Inn, Palo Alto.

MISCELLANEOUS FACTS:

Transportation on all trips will be via United Air Lines DC-6B or DC-7 charters (61 and 64 capacity).

OSC uniforms for road games will be orange helmets, white jerseys, orange numerals, black pants. For home games black jerseys will be used.

Requests for scouting films should be directed to Assistant Coach Ron Siegrist. Scouting tickets in press box are handled by publicity director John Eggers. Business Manager Jim Barratt is in charge of visiting team tickets.

Team Flight Schedules 1960

Games	Date	Departure	Arrivals
USC at	9-15-60	Corvallis, 3:30 p.m.	Burbank, 8:05 p.m.
Los Angeles	9-16-60	LA Int., 11:30 p.m.	Corvallis 2 a.m.
Iowa at	9-23-60	Corv'lis, 9 a.m.	Cedar Rapids, 5:20 p.m.
Iowa City	9-24-60	Cedar Rapids	Corvallis, 11:15 p.m.
Indiana at	10- 7-60	Corv'lis, 8:30 a.m.	Ind.'apolis, 6:15 p.m.
Bloomington	10- 8-60	Ind'apolis, 6 p.m.	Corvallis, 1:05 a.m.
Idaho at	10-14-60	Corvallis, 1:30 p.m.	Spokane 3 p.m.
Moscow	10-15-60	Spokane, 7:30 p.m.	Corvallis, 9 p.m.
Wash. S.	11- 4-60	Corvallis, 1:30 p.m.	Spokane, 3 p.m.
at Pullman	11- 5-60	Spokane, 7:30 p.m.	Corvallis, 9 p.m.
Stanford at	11-11-60	Corv'lis, 3 p.m.	San Francisco, 5 p.m.
Palo Alto	11-12-60	San. Fran., 5:45 p.m.	Cor'lis, 7:50 p.m.

(NOTE: All times are local times. En route to Indiana there will be a Chicago stopover from 4:45 p.m., to 5:15 p.m. for change of air line crew. All flights are with United Air Lines).

Years Of Service On Athletic Staff at OSC

COACHES:

Tommy Prothro
Bob Watson
Bob Zelinka
Bud Gibbs
Ron Siegrist
Doug Bradley

6th year
6th year
6th year
3rd year
2nd year
1st year

NON-COACHES:

Spec Keene
Jim Barratt
John Eggers
Bill Robertson
Jimmy Demith
Bill Neland

14th year
9th year
10th year
15th year
12th year
5th year

PUBLICITY MAN'S ITINERARY

- Sept. 1 through Sept. 10—
Coliseum 107, Corvallis, Ore.
- Sept. 11 through Sept. 17—
Biltmore hotel, Los Angeles, Cal.
- Sept. 18, 19, 20—
Ft. Des Moines Hotel, Des Moines, Iowa.
- Sept. 21—
Blackhawk hotel, Davenport, Iowa
- Sept. 22, 23—
Montrose hotel, Cedar Rapids, Iowa, with intermittent trips to Iowa City, Iowa.
- Sept. 25—
Coliseum 107, Corvallis, Ore.
- Sept. 26 through Oct. 1—
Congress hotel, Portland, Ore.
- October 2—
Coliseum 107, Corvallis, Ore.
- Oct. 3, 4—
LaSalle hotel, Chicago, Ill.
- Oct. 5—
Marott hotel, Indianapolis, Ind.
- Oct. 6, 7, 8—
Van Orman hotel, Bloomington, Ind.
- Oct. 9, 10—
Coliseum 107, Corvallis, Ore.
- Oct. 11 through Oct. 15—
Ridpath hotel, Spokane, Wash.
- Oct. 16—
Coliseum 107, Corvallis, Ore.
- Oct. 17 through Oct. 22—
Congress hotel, Portland, Ore.
- Oct. 23 through Oct. 30—
Coliseum 107, Corvallis, Ore.
- Oct. 31 through Nov. 5—
Ridpath hotel, Spokane, Wash.
- Nov. 6—
Coliseum 107, Corvallis, Ore.
- Nov. 7 through Nov. 12—
Sheraton-Palace hotel, San Francisco, Cal.
- Nov. 13 through Nov. 19—
Coliseum 107, Corvallis, Ore.

OREGON'S TEN TOP CITIES

(POPULATION)

(Taken in latest census, 1960)

1. Portland	370,339
2. Eugene	50,169
3. Salem	49,166
4. Medford	24,246
5. CORVALLIS	21,353
6. Springfield	19,373
7. Klamath Falls	16,821
8. Pendleton	14,347
9. Albany	12,841
10. Bend	11,409

OSC Freshman Schedule 1960

- Oct. 21 (Friday) Washington Frosh at Corvallis (1:30 p.m.)
Oct. 27 (Thurs.) Oregon Frosh at Portland (8 p.m.)
Nov. 4 (Friday) Wash. State Frosh at Pullman (1:30 p.m.)
Nov. 18 (Friday) Oregon Frosh at Eugene (1:30 p.m.)

OREGON STATE FOOTBALL SCHEDULES 1960 through 1964

1960

- Sept. 16 USC at Los Angeles
- 24 Iowa at Iowa City
- Oct. 1 Houston at Portland
- 8 Indiana at Bloomington
- 15 Idaho at Moscow
- 22 Washington at Portland
- 29 Calif. at Corvallis
- Nov. 5 WSU at Pullman
- 12 Stanford at Palo Alto
- 19 Oregon at Corvallis

1961

- Sept. 23 Syracuse at Portland
- 30 Stanford at Portland
- Oct. 7 Idaho at Corvallis
- 14 Wisconsin at Madison
- 21 Arizona State at Tempe
- 28 Houston at Houston
- Nov. 4 WSU at Corvallis
- 11 Washington at Seattle
- 18 Denver at Denver
- 25 Oregon at Eugene

1962

- Sept. 22 Iowa State at Corvallis
- 29 Iowa at Iowa City
- Oct. 6 Stanford at Palo Alto
- 13 Washington at Portland
- 20 College of Pacific at Corvallis
- 27 West Virginia at Portland
- Nov. 3 WSU at Pullman
- 10 Idaho at Moscow
- 17 Denver at Corvallis
- 24 Oregon at Corvallis

1963

- Sept 21 Utah at Salt Lake City
- 28 Colorado at Portland
- Oct. 5 Baylor at Portland
- 12 Washington at Seattle
- 19 WSU at Corvallis
- 26 Syracuse at Syracuse
- Nov. 2 Stanford at Portland or Corvallis
- 9 Indiana at Bloomington
- 16 USC at Los Angeles
- 23 Oregon at Eugene

1964

- Sept. 19 Northwestern at Evanston
- 26 Colorado at Boulder
- Oct. 3 Baylor at Waco
- 10 Stanford at Palo Alto
- 17 Washington at Portland
- 24 Syracuse at Portland
- 31 WSU at Pullman
- Nov. 7 Indiana at Portland
- 14 Idaho at Moscow
- 21 Oregon at Corvallis

All-American Selections

The following players from Oregon State were named to first team all-Americans on one or more teams having national recognition.

Gap Powell, full back	1921
Ade Schwammel, tackle	1933
Red Franklin, halfback	1933
Vic Sears, tackle	1940
Bill Gray, center	1946
John Witte, tackle	1955, 1956
Ted Bates, tackle	1958

PCC Standings 1955 through 1958 In Tommy Prothro Era

(These figures are compiled to show how Coach Tommy Prothro of Oregon State dominated play in Pacific Coast conference its final four seasons. Prothro twice finished first, was second once and fourth once in the PCC.)

	W	L	T	Pct.
OREGON STATE	22	8	1	.726
UCLA	18	8	1	.685
Oregon	17	12	2	.581
Southern California	13	13	1	.500
Washington	14	15	2	.484
Stanford	12	14	1	.463
Washington	12	17	1	.417
California	10	17	1	.375
Idaho	0	14	0	.000

PCC STANDINGS, 1937 to 1959

(PCC was dissolved prior to 1959 football season)

	Won	Lost	Tied
USC	87	41	14
UCLA	85	51	9
OREGON STATE	80	66	12
California	76	61	7
Washington	71	75	8
Oregon	68	79	5
WSC	64	76	11
Stanford	61	61	5
Idaho	12	70	2

POST WORLD WAR II 1946 - 1959

	Won	Lost	Tied
UCLA	62	23	2
USC	51	27	4
OREGON STATE	48	46	6
California	48	34	4
Oregon	44	48	4
Stanford	39	43	5
Washington	38	47	4
WSC	38	52	6
Idaho	6	44	1

Best Career Coaching Records In OSC Football History

(Based on won-lost-tied percentage and does not include post-season Bowl games)

	Coach	Years	When	W	L	T	Pct.
1.	Tommy Prothro	5	1955-	30	18	1	.621
2.	Paul Schissler	9	1924-32	48	30	2	.613
3.	Lon Stiner	14	1933-48	71	49	12	.584

(Just coaches with 20 wins or more included in selection of top records)

Other Career Records

Coach	Years	When	W	L	T
Kip Taylor	6	1949-54	20	36	0
E. J. Stewart	3	1913-15	15	5	5
F. S. Norcross	3	1906-08	14	4	3
R. B. Rutherford	4	1920-23	13	14	6
Dr. Steckle	2	1904-05	10	5	0
Sam Dolan	2	1911-12	8	6	0
Joseph Pipal	2	1916-17	8	7	1
Bill Bloss	2	1893 & 1897	6	1	0
W. H. Hargiss	2	1918-19	6	8	1
Frank Herbold	1	1902	4	1	1
Sol S. Metzger	1	1909	4	2	1
B. Stickney	1	1899	3	2	0
C. H. Schildmiller	1	1910	3	2	1
Kennedy	1	1894	2	1	0
McFadden	1	1903	2	4	1
Paul Downing	1	1895	0	2	1
Tommy Code	1	1896	0	2	0

PCC Titles Won

	Outright Championship	Co- Champions
Southern California	10	2
California	8	3
Stanford	5	3
UCLA	5	1
Washington	3	1
Oregon State	2	1
Washington State	2	0
Oregon	0	4
Idaho	0	0

OSC Athletic Directors

1915-1919	Dr. E. J. Stewart
1919-1921	James J. Richardson
1921-1923	R. B. Rutherford
1923-1937	Carl A. Lodell
1937-1947	Percy B. Locey
1947-	Roy S. Keene

Remember the Rose Bowlers?

(EDITOR'S NOTE: Oregon State twice has played in the Rose Bowl game. The Beavers whipped Duke, 20-16, in the "Transplanted" game at Durham, N.C., on January 1, 1942, and lost to Iowa, 35-19, at Pasadena, Cal., on January 1, 1957. Here are the starters from both those great clubs, with present occupation listed)

1942:	Present Profession and Location
LE—George Zellick	Principal, Thurston Hi, Springfield, Ore.
LT—George Bain	County Agent, Ontario, Ore.
LG—Bill Halverson	Engineer, Portland, Ore.
C—Quentin Greenough	Building Contractor, Corvallis, Ore.
RG—Martin Chaves	Real Estate, Corvallis, Ore.
RT—Bob Saunders	Rice & Peach Orchards, Yuba City, C.
RE—Norm Peters	Mgr., Cotton & Ag. Prod., Wasco, Cal.
QB—George Peters	Teacher, Hi School, Mendato, Cal.
LH—Bob Dethman	Deceased
RH—Don Durdan	Mortician, Corvallis, Ore.
FB—Joe Day	Trucking contractor, Newport, Ore.

1957:	Present Profession and Location
LE—Norm Thiel	In Air Force
LT—John Witte	Phy. Ed. Dir., MacLaren School, Woodburn, Ore.
LG—John Sniffen	Advanced education work
C—Dick Corrick	Asst. FB Coach, Iowa State U.
RG—Jim Brackins	In Air Force
RT—Dave Jesmer	In Army
RE—Bob DeGrant	In Army in Germany
QB—Gerry Laird	Coaching, Teaching, Del Paso Hts., Cal.
LH—Joe Francis	Pro Football, Green Bay Packers
RH—Earnel Durden	Coach & Teacher, Los Angeles
FB—Tom Berry	Asst. Coach, Tigard, Ore.

BEST SEASON ATTENDANCE MARKS AT OSC SINCE WORLD WAR II

	Year	Attendance	Games
1.	1957	304,955	10
2.	1959	298,217	10
3. *	1956	282,955	10
4.	1951	277,071	10
5.	1948	257,999	12
6.	1947	238,913	10
7.	1958	231,371	10
8.	1955	220,912	9
9.	1954	219,432	9
10.	1953	215,127	9
11.	1949	210,563	10
12.	1950	184,499	9
13.	1952	169,194	9
14.	1946	166,105	9

(*Rose Bowl crowd of 100,000 not included)

East-West Shrine Game Players From Oregon State

(At San Francisco)

Name	Pos.	Year
Percy Locey	Tackle	1926
Carl Gilmore	Back	1930
Russ Stiff	End	1930
Bill McKalip	End	1930
Kenneth Hammer	Center	1932
Harry Field	Tackle	1934
Ade Schwammel	Tackle	1934
Pierre Bowman	Halfback	1934
Elmer Kolberg	Fullback	1938
Joe Gray	Halfback	1938
Joe Wendlick	End	1939
Prescott Hutchins	Guard	1939
Vic Sears	Tackle	1941
Leonard Younce	Guard	1941
Jim Kisselburgh	Fullback	1941
Lloyd Wickett	Tackle	1943
Choc Shelton	Fullback	1944
Quentin Greenough	Center	1944
Boyd Clement	Center	1944, 1947
Bob Stevens	Halfback	1946
Dick Lorenz	End	1947
Martin Chaves	Guard	1947
Ted Ossowski	Tackle	1948
Paul Evensen	Guard	1949
Bill Austin	Tackle	1950
Ken Carpenter	Halfback	1950
Tom DeSylvia	Guard	1950
Dick Gray	Halfback	1952
Jim Clark	Guard	1952
Herman Clark	Tackle	1952
John Thomas	End	1953
Sam Baker	Fullback	1955
Ron Aschbacher	Tackle	1956
Joe Francis	Halfback	1958
Nub Beamer	Fullback	1958
Dave Jesmer	Tackle	1958
Ted Bates	Tackle	1959

Highest OSC Scores In Grid History

1. Oregon State 76, Willamette 0 (1931)
2. Oregon State 75, Chemawa Indians 6 (1911)
3. Oregon State 69, Willamette 0 (1915)
4. Oregon State 68, Chemawa Indians 0 (1921)
Oregon State 68, Rooks 7 (1921)
5. Oregon State 67, Multnomah Club 0 (1926)
Oregon State 67, Willamette 0 (1902)
- * 6. Oregon State 66, Idaho 18 (1959)
7. Oregon State 64, Willamette 0 (1914)
- * 8. Oregon State 63, Montana 14 (1949)
9. Oregon State 62, Albany College 0 (1893)
10. Oregon State 62, Whitman 0 (1925)
11. Oregon State 61, Utah 28 (1951)
(*Conference game)

Worst OSC Defeats In Grid History

1. UCLA 61, Oregon State 0 (1954)
2. UCLA 57, Oregon State 0 (1952)
3. UCLA 50, Oregon State 6 (1946)
4. Southern Cal 48, Oregon State 6 (1947)
5. Washington 47, Oregon State 0 (1913)
6. California 46, Oregon State 7 (1954)
7. Minnesota 44, Oregon State 6 (1954)
8. Oregon 44, Oregon State 0 (1895)
9. UCLA 41, Oregon State 0 (1953)
10. California 41, Oregon State 0 (1949)

1960 OPPONENTS, PAST RECORDS

1960 Foe	Biggest OSC Win Margin	Opponent's Biggest Win
USC	38-6 (1914)	48-7 (1947)
Iowa	No wins	35-19 (1957 Rose Bowl)
Houston	No games	No games
Indiana	No games	No games
Idaho	66-18 (1959)	27-6 (1952)
Washington	40-14 (1951)	47-0 (1913)
California	28-7 (1946)	46-7 (1954)
Wash. State	39-25 (1957)	34-6 (1954)
Stanford	24-14 (1957)	49-13 (1942)
Oregon	39-2 (1942)	44-0 (1895)

OSC Football Captains 1893 to Present

1893-94—No Record	1919-20—Henry Rearden
1894-95—No Record	1920-21—Chuck Rose
1895-96—A. J. Stimpson	1921-22—Gap Powell
1896-97—A. J. Stimpson	1922-23—Percy Locey
1897-98—Daniel Bodine	1923-24—Millard Scott
1898-99—No Record	1924-25—No capains elected full season. This continued on through Lon Stiner years, 1933-1949. Stiner normally appointed individual captains for each particular game.
1899-00—Fred Walters	1949-50—Tom DeSylvia
1900-01—No football—athletics prohibited by Regents	1950-51—Arvid Niemi (for Stan McGuire, who was killed prior to season)
1901-02—John Gault	1951-52—John Thomas
1902-03—John Gault	1952-53—Jim Cordial
1903-04—Bert Pilkington	1953-54—LaVerne Ferguson
1904-05—Bert Pilkington	1954-55—Wes Ediger, Jim Withrow (co-captains)
1905-06—Herb Root	1955-56—Ron Siegrist, Howard Buettgenbach (co-captains)
1906-07—Leonard Darby	1956-57—Dick Corrick, Gerry Laird (co-captains)
1907-08—Frank Pendergrass	1957-58—Ted Searle
1908-09—Carl Wolff	1959-60—George Enderle,
1909-10—James Evenden	1960-61—Doug Bashor.
1910-11—Bird Hawley	
1911-12—Tom E. May	
1912-13—Otto Sitton	
1913-14—James Shaw	
1914-15—Gus Hofer	
1915-16—Brewer Billie	
1916-17—Lee Bissett	
1917-18—Meier Newman	
1918-19—Raymond Archibald	
1958-59—Buzz Randall, Jim Brackins (co-captains) Randall died before season began).	

Ex-Beavers Who Played Pro Football In The Past

Zuck Carlson—Chicago Bears
 Bill McKalip—Detroit Lions
 Red Franklin—Brooklyn Dodgers
 Ade Schwammel—Green Bay Packers
 Hal Moe—Chicago Cardinals
 Gil Bergerson—Detroit Lions
 Hal Pangle—Chicago Cardinals
 Harry Field—Chicago Cardinals
 Frank Ramsey—Chicago Bears
 Len Younce—New York Giants
 Vic Sears—Philadelphia Eagles
 Eberle Schultz—Los Angeles Dons
 Joe Wendlick—Philadelphia Eagles
 Kenny Dow—Washington Redskins
 Elmer Kolberg, Pittsburgh Steelers
 Don Durdan—San Francisco 49ers
 Don Samuel—Pittsburgh Steelers
 Bill Austin—New York Giants
 Doug Hogland—SF 49ers, Chicago Cardinals, Detroit Lions
 Herm Clark—Chicago Bears
 Jim Clark—Washington Redskins
 Bob Redkey—Calgary Stampeders (Canada)
 Bill West—Saskatchewan Roughriders (Canada)
 John Witte—Saskatchewan Roughriders (Canada)
 Sam Wesley—Saskatchewan Roughriders (Canada)

Ex-Beavers Still Active In Pro Football

Sam Baker—Cleveland Browns (NFL)
 Ted Bates—St. Louis Cardinals (NFL)
 Joe Francis—Green Bay Packers (NFL)
 Paul Lowe—Los Angeles Chargers (AFL)
 Jack Gotta—Saskatchewan Roughriders (Canada)
 Nub Beamer—Vancouver BC Lions (Canada)
 Bill Austin—Asst. Coach Green Bay Packers (NFL)
 Ken Carpenter—Head Coach Saskatchewan Roughriders (Canada)
 Len Younce—Asst. Coach Saskatchewan Roughriders (Canada)
 Dave Mann—Toronto (Canada)

'59 Football Award Winners At OSC

(Selected by staff)

Award:	Winner	Sponsor
Most Valuable Player	Dainard Paulson	Lane County 30-Staters
Rookie of Year	Mike Kline	Corvallis 30-Staters
Most Improved Player	Marne Palamteer	R. J. Chrisman
Attitude & Scholarship	Neil Plumley	Ath. Dept. OSC
Outstanding Freshman	Ladd Horn	Miller Huggins

OSC's All-Time Record against Big Ten Teams

1915	Oregon State 20	Michigan State 0
1942	Oregon State 7	Michigan State 7
1948	Michigan State 46	Oregon State 21
1949	Oregon State 25	Michigan State 20
1950	Michigan State 38	Oregon State 13
1951	Michigan State 6	Oregon State 0
1952	Michigan State 17	Oregon State 14
1953	Michigan State 34	Oregon State 6
1954	Minnesota 44	Oregon State 6
1956	Iowa 14	Oregon State 13
1956	Iowa 35	Oregon State 19
1957	Oregon State 22	Northwestern 13
1959	Michigan 18	Oregon State 7

Wins—Big Ten 9, Oregon State 3, one tie

Best Years For OSC All Games

Year	W	L	T	PF	PA	Coach
1914	7	0	2	172	15	E. J. Stewart
1907	6	0	0	137	0	F. S. Norcross
1897	2	0	0	42	8	Bill Bloss
1939	9	1	1	186	77	Lon Stiner
1946	7	1	1	157	81	Lon Stiner
1926	7	1	0	221	30	Paul Schissler
1902	4	1	1	158	16	Frank Herbold
1893	4	1	0	144	48	Bill Bloss
1906	4	1	2	77	4	F. S. Norcross
1957	8	2	0	203	129	Tommy Prothro
1941	8	2	0	143	49	Lon Stiner
1949	7	3	0	232	188	Kip Taylor
1956	7	3	1	203	166	Tommy Prothro
1955	6	3	0	126	120	Tommy Prothro

Best Years For OSC In PCC

	Pos.	W	L	T	PF	PA	Coach
1956	1st	6	1	1	152	104	Tommy Prothro
1941	1st	7	2	0	123	33	Lon Stiner
1957	T 1st	6	2	0	147	110	Tommy Prothro
1946	2nd	6	1	1	122	81	Lon Stiner
1955	2nd	5	2	0	86	107	Tommy Prothro
1939	3rd	6	1	1	105	59	Lon Stiner
1940	3rd	4	3	1	102	80	Lon Stiner
1925	T 3rd	4	3	1	53	51	Lon Stiner
1925	T 3rd	3	2	0	77	81	Paul Schissler
1926	T 3rd	4	1	0	102	24	Paul Schissler
1949	4th	5	3	0	180	161	Kip Taylor
1933	4th	2	1	1	25	13	Lon Stiner

OSC's LARGEST GRID CROWDS IN HISTORY

Opponent	Site	Year	Attendance
Iowa	Rose Bowl	1957	100,000
Michigan	Ann Arbor	1959	74,693
Stanford	Palo Alto	1956	65,000
Southern Cal.	Los Angeles	1947	61,301
UCLA	Los Angeles	1955	57,664
Duke	Durham (Rose Bowl)	1942	55,000
California	Berkeley	1957	50,000
Southern Cal	Los Angeles	1956	53,714
Michigan State	East Lansing	1953	51,108
Southern Cal	Los Angeles	1948	50,237
California	Berkeley	1957	50,000
Minnesota	Minneapolis	1954	49,000
Washington	Seattle	1959	48,000
UCLA	Los Angeles	1957	46,102
Fordham	New York City	1933	45,000
Southern Cal	Los Angeles	1940	45,000
Southern Cal	Los Angeles	1941	45,000
Stanford	Palo Alto	1940	45,000
California	Berkeley	1951	43,000
California	Berkeley	1959	41,500
Iowa	Iowa City	1956	41,027
Southern Cal	Los Angeles	1958	40,312

DANCING RALLY GIRLS AT OSC

1955-56:

Sylvia Kain
 Connie Kinser
 Kay Shideler
 Joan Norman
 Sue Gallo
 Elaine Captain

1956-57:

Nina Gollersrud
 Verl Pilling
 Cinda Lee
 Cece Broome
 Gaylee Briggs
 Joan Service

1959-60

Kathi Booth
 Ginny Evans
 Sally Eldon
 Judy Query
 Geri Rose
 Janice Phillips

1957-58:

Carol Boesch
 Harryette Fromong
 Deann McMurray
 Shirley Gonsalves
 Judy Palmberg
 Shirley Jones

1958-59:

Barbie Bell
 Irene Dean
 Pat Mannagh
 Pat Nielson
 Jeanne Perrin
 Judy White

1960-61

Ginger Boal
 Val Rouselle
 Nancy Johnson
 Mary Laurhammer
 Jayne Makino
 Kay Parker

61 YEARS OF FOOTBALL

Year	Name of Coach	Won	Lost	Tied	Points	Against
1893	Bill Bloss	4	1	0	144	48
1894	Kennedy	2	1	0	52	28
1895	Paul Downing	0	2	1	6	80
1896	Tommy Code	0	2	0	8	14
1897	Bill Bloss	2	0	0	42	8
1898	No Coach	1	2	1	36	78
1899	Mr. Stickney	3	2	0	75	60
1902	Frank Herbold	4	1	1	158	16
1903	McFadden	2	4	1	21	32
1904	Dr. Steckle	4	2	0	119	22
1905	Dr. Steckle	6	3	0	166	28
1906	F. S. Norcross	4	1	2	77	4
1907	F. S. Norcross	6	0	0	137	9
1908	F. S. Norcross	4	3	1	83	51
1909	Sol S. Metzger	4	2	1	54	47
1910	C. H. Schildmiller	3	2	1	27	43
1911	Sam Dolan	5	2	0	119	49
1912	Sam Dolan	3	4	0	57	40
1913	E. J. Stewart	3	2	3	59	75
1914	E. J. Stewart	7	0	2	172	15
1915	E. J. Stewart	5	3	0	166	73
1916	Joseph Pipal	4	5	0	92	112
1917	Joseph Pipal	4	2	1	83	33
1918	W. H. Hargiss	2	4	0	33	46
1919	W. H. Hargiss	4	4	1	143	64
1920	R. B. Rutherford	2	2	2	20	52
1921	R. B. Rutherford	4	3	2	231	42
1922	R. B. Rutherford	3	4	0	44	42
1923	R. B. Rutherford	4	5	2	55	71
1924	Paul J. Schissler	3	5	0	71	85
1925	Paul J. Schissler	7	2	0	268	81
1926	Paul J. Schissler	7	1	0	221	30
1927	Paul J. Schissler	3	3	1	98	78
1928	Paul J. Schissler	6	3	0	206	53
1929	Paul J. Schissler	5	4	0	182	106
1930	Paul J. Schissler	7	3	0	208	60
1931	Paul J. Schissler	6	3	1	198	62
1932	Paul J. Schissler	4	6	0	130	109
1933	Lon Stiner	6	2	2	88	48
1934	Lon Stiner	3	6	2	104	131
1935	Lon Stiner	6	4	1	175	100
1936	Lon Stiner	4	6	0	116	151
1937	Lon Stiner	3	3	3	71	60
1938	Lon Stiner	5	3	1	72	51
1939	Lon Stiner	9	1	1	186	77
1940	Lon Stiner	5	3	1	128	80
1941	Lon Stiner	8	2	0	143	49
1942	Lon Stiner	4	5	1	157	142
1943-44	No Team (wartime)					
1945	Lon Stiner	4	4	1	100	131
1946	Lon Stiner	7	1	1	157	81
1947	Lon Stiner	5	5	0	171	136
1948	Lon Stiner	5	4	3	249	237
1949	Kip Taylor	7	3	0	232	188
1950	Kip Taylor	3	6	0	107	183
1951	Kip Taylor	4	6	0	204	180
1952	Kip Taylor	2	7	0	123	267
1953	Kip Taylor	3	6	0	39	187
1954	Kip Taylor	1	8	0	60	296
1955	Tommy Prothro	6	3	0	126	120
1956	Tommy Prothro	7	3	1	203	166
1957	Tommy Prothro	8	2	0	203	129
1958	Tommy Prothro	6	4	0	98	118
1959	Tommy Prothro	3	7	0	166	178

OSC Attendance

(Since World War II)

	1946		1950
UCLA	40,203	Michigan State	32,500
Portland U.	9,000	Stanford	16,000
USC	29,594	Washington	27,876
WSC	14,000	California	37,000
Idaho	3,500	Idaho	9,000
California	25,000	Wash. State	13,000
Oregon	20,000	UCLA	15,323
Washington	26,808	Montana	4,000
Stanford	18,000	Oregon	26,800
	<hr/>		<hr/>
Total (9 games)	166,105	Total (9 games)	184,499
	1947		1951
Utah	22,175	Michigan State	33,373
Washington	39,000	Utah	9,000
Idaho	10,000	Idaho	7,500
USC	61,000	USC	36,400
Portland U.	6,657	Wash. State	15,500
Stanford	15,000	California	43,000
UCLA	30,870	UCLA	26,598
WSC	14,000	Stanford	40,000
Oregon	20,211	Washington	36,000
Nebraska	20,000	Oregon	19,700
	<hr/>		<hr/>
Total (10 games)	238,913	Total (10 games)	277,071
	1948		1952
Idaho	8,400	Utah	15,000
USC	50,237	Michigan State	22,595
Washington	25,029	Stanford	28,000
Portland U.	6,500	USC	17,438
California	55,000	Wash. State	15,000
UCLA	30,933	Washington	19,243
Michigan State	12,000	UCLA	22,585
WSC	12,000	Idaho	8,000
Utah	8,000	Oregon	21,333
Oregon	22,000		<hr/>
Nebraska	12,900	Total (9 games)	169,194
Hawaii U. (Pine- apple Bowl)	15,000		<hr/>
	<hr/>		1953
Total (12 games)	257,999	UCLA	39,209
	1949	California	13,442
UCLA	37,427	Washington	28,000
Utah	25,012	Stanford	8,005
California	18,885	USC	34,163
Washington	27,000	Idaho	9,200
Montana	8,000	Michigan State	51,108
Stanford	25,000	WSC	13,500
Wash. State	15,000	Oregon	18,500
Idaho	9,000		<hr/>
Michigan State	22,239	Total (9 games)	215,127
Oregon	23,000		<hr/>
	<hr/>		
Total (10 games)	210,563		

1954	
Idaho	9,000
Washington	19,667
WSC	18,000
Nebraska	39,000
UCLA	8,500
USC	30,065
Minnesota	49,000
California	25,000
Oregon	21,200
Total (9 games)	<u>219,432</u>
1955	
Brigham Young	8,000
Stanford	24,748
UCLA	57,664
Col. of Pacific	22,500
WSC	17,000
Washington	25,000
California	35,000
Idaho	9,000
Oregon	22,000
Total (9 games)	<u>220,912</u>
1956	
Missouri	22,000
USC	53,714
Iowa	41,027
California	14,125
WSC	14,500
UCLA	17,080
Washington	32,890
Stanford	65,000

Idaho	5,000
Oregon	17,300
Iowa (Rose Bowl)	100,000
Total (11 Games)	<u>382,636</u>

1957	
USC	36,885
Kansas	28,000
Northwestern	34,500
Idaho	14,600
UCLA	46,120
Washington	31,500
WSC	20,200
California	50,000
Stanford	20,000
Oregon	23,150
Total (10 Games)	<u>304,955</u>

1958	
USC	40,312
Kansas	28,115
UCLA	18,532
Wyoming	12,580
Idaho	8,618
Washington	29,514
California	21,426
WSC	18,191
Stanford	26,509
Oregon	27,574
Total (10 games)	<u>231,371</u>

1959	
USC	24,395
Texas Tech	20,000
Nebraska	28,000
Michigan	74,693
Idaho	10,628
California	41,500
WSU	17,601
Washington	48,000
Stanford	10,900
Oregon	22,500
Total (10 games)	<u>298,217</u>

INTERSECTIONAL GAMES OF THE PAST

1903—OSC 15, Nevada 0	1947—OSC 6, Utah 7
1904—OSC 45, Utah Aggies 0	1948—OSC 21, Michigan State 46
1907—OSC 10, St. Vincent College 0	1948—OSC 20, Utah 20
1912—OSC 23, Occidental 6	1948—OSC 28, Nebraska 13
1915—OSC 20, Michigan Aggies 0	1948—OSC 47, University of Hawaii 27**
1915—OSC 0, Syracuse 28	1949—OSC 27, Utah 7
1916—OSC 7, Nebraska 17	1949—OSC 25, Michigan State 20
1923—OSC 9, Hawaiian All-Stars 14	1950—OSC 13, Michigan State 38
1923—OSC 0, University of Hawaii 7	1951—OSC 0, Michigan State 6
1924—OSC 0, Nebraska 14	1951—OSC 61, Utah 28
1926—OSC 29, Marquette 0	1952—OSC 14, Utah 7
1927—OSC 14, Carnegie Tech 14	1952—OSC 14, Michigan State 17
1928—OSC 25, New York University 13	1953—OSC 6, Michigan State 34
1929—OSC 14, Detroit U. 7	1954—OSC 7, Nebraska 27
1930—OSC 12, West Virginia University 0	1954—OSC 6, Minnesota 44
1931—OSC 16, Colorado 0	1956—OSC 19, Missouri 13
1931—OSC 12, Utah 0	1956—OSC 13, Iowa 14
1932—OSC 6, Fordham 8	1957—OSC 19, Iowa 35***
1932—OSC 6, Detroit U. 14	1957—OSC 34, Kansas 6
1933—OSC 9, Fordham 6	1957—OSC 22, Northwestern 13
1933—OSC 0, Nebraska 22	1958—OSC 12, Kansas 0
1935—OSC 20, Nebraska 26	1958—OSC 0, Wyoming 28
1936—OSC 14, Nebraska 32	1959—OSC 14, Texas Tech 15
1939—OSC 28, Hawaiian All-Stars 0	1959—OSC 6, Nebraska 7
1939—OSC 39, University of Hawaii 6	1959—OSC 7, Michigan 18
1941—OSC 20, Duke 16*	*Rose Bowl Game at Durham, N.C.
1942—OSC 7, Michigan State 7	**Pineapple Bowl Game at Honolulu.
1947—OSC 27, Nebraska 6	***Rose Bowl Game at Pasadena

PAULSON, MILLER RANKED HIGH IN NCAA STATISTICS

Tailback Dainard Paulson and wingback Ron Miller each finished second in NCAA final statistics for the 1959 football season in their various individual specialties. Paulson had 32 punts for a 45.56 average, losing the top position nationally to Hadl of Kansas (43 punts for 45.58 average).

Miller was national runner-up in kickoff returns with 15 returned for 453 yards, a 30.2 average. National leader was Perkins of New Mexico, with 15 for 520 yards and a 34.7 average.

Oregon State led the nation in interception-return yards (436), placed 4th in team punting (57 for 41.3 average), was 7th as a team in kickoff returns (36 for 872, a 24.2 average), and 14th in PAT's (22 of 23 tries for .957 average).

New all-time OSC school marks established: Jim Stinnette scored 18 points against Idaho to tie mark; Miller established new mark in both kickoff returns (15) and kickoff yards returned for season (453); Beavers had 9 punt returns against Idaho for new team mark; team fumbled 10 times against Washington for new record; team had most interception yards (436) and highest average for kickoff returns (24.2, on 36 for 872); team fumbles for season (42); and team fumbles for single game (10, Washington); team had 36 kickoff returns for 872 yards, a 24.2 average).

OREGON STATE FOOTBALL

LEADERS

Total Offense, season:

1082	Joe Francis (1957)
1003	Ken Carpenter (1949)
848	Don Samuel (1948)
839	Nub Beamer (1957)
832	Ken Carpenter (1948)
808	Sam Baker (1951)
751	Joe Francis (1956)
733	Dave Mann (1951)
700	Paul Lowe (1956)
689	Don Samuel (1947)

Rushing, season:

808	Sam Baker (1951)
760	Nub Beamer (1957)
689	Ken Carpenter (1949)
626	Joe Francis (1957)
622	Sam Baker (1950)
589	Ken Carpenter (1946)
517	Sam Baker (1952)
508	Earnel Durden (1956)
496	Dick Twenge (1948)
489	Jim Kisselburgh (1940)

Passing, season:

615	Gene Morrow (1949)
601	Jim Withrow (1952)
595	Gene Morrow (1950)
593	Don Samuel (1943)
520	Don Samuel (1947)
513	Gene Morrow (1951)
504	Jim Withrow (1953)
477	Joe Gray (1937)
456	Joe Francis (1957)
454	Bob Dethman (1941)

Scoring, season:

67	Sam Baker (1951)
54	Ken Carpenter (1949)
54	Joe Francis (1957)
48	Don Samuel (1948)
48	Nub Beamer (1957)
43	Tom Berry (1956)
42	Gene Taft (1950)
42	Sam Baker (1952)

Receiving, season:

36	John Thomas (1950)	350
29	Jack Gotta (1952)	351
27	John Thomas (1951)	286
25	Rudy Ruppe (1948)	269
24	Don Mast (1947)	250
22	Leon Hittner (1954)	222
19	Bob DeGrant (1957)	239
17	Stan McGuire (1949)	308

Total Offense, career:

2846	*Ken Carpenter (46-47-48-49)
2669	Joe Francis (55-56-57)
2222	Don Samuel (46-47-48)
1947	Sam Baker (50-51-52)
1746	*Dick Twenge (46-47-48-49)
1642	Gene Morrow (49-50-51)

Rushing, career:

1947	Sam Baker (50-51-52)
1910	*Ken Carpenter (46-47-48-49)
1378	*Dick Twenge (46-47-48-49)
1369	Joe Francis (55-56-57)
1358	Nub Beamer (56-57-58)
1297	Jim Kisselburgh (38-39-40)
1092	Earnel Durden (56-57-58)
889	Don Samuel (46-47-48)

Passing, career:

1723	Gene Morrow (49-50-51)
1537	*Jim Withrow (51-52-52-54)
1353	Don Samuel (46-47-48)
1300	Joe Francis (55-56-57)
936	*Ken Carpenter (46-47-48-49)
	* 4 years

All-Time OSC Football Records

INDIVIDUAL

(Single Game)

Rushing:

- Most rushes—31, Sam Baker (Utah, 1952)
Most net yards—233, Dave Mann (Utah, 1951)
Highest avg. per rush (min. 8 rushes)—21.2 (11 for 233) Dave Mann (Utah, 1951)

Forward Passing:

- Most attempts—28, Chuck Brackett (UCLA, 1952)
Most completions—14, Chuck Brackett (UCLA, 1952) and Gene Morrow (WSC, 1950)
Most had intercepted—no player with more than three.
Highest percent completed (Min. 8 atts.)—.900 (9 of 10) Joe Francis (Stanford 1957).
Most yards gained—246, Dick Gray, (Nebraska, 1947)
Most touchdown passes thrown—3, Dick Gray (Nebraska, 1947); Ken Carpenter (WSC, 1948), and Jim Withrow (Stanford, 1952)

Total Offense:

- Most rushing and passing plays—35, Joe Francis (Stanford 1957)
Most yards rushing and passing—274 Joe Francis (Stanford 1957)
Highest avg. per play (Min. 10 plays)—21.2 (11 for 233) Dave Mann (Utah, 1951)

Pass Receiving:

- Most passes caught—8, John Thomas (Mich. State, 1950) and Jack Gotta (UCLA & Stanford, 1952)
Most yards gained—117, Bob Laidlaw (Nebraska, 1947)
Most touchdown passes caught—2, Don Samuel (California, 1946); Bob Laidlaw (Nebraska, 1947); Bob Laidlaw (WSC, 1948); and Jack Gotta (Stanford, 1952)

Punting:

- Most punts—13, Sam Baker, (USC, 1952)
Highest avg. Per punt—(min. 5 punts)—48.0 (8 for 384) Dave Mann, (Idaho, 1951)

Interception Returns:

- Most passes intercepted—3, Bill Sheffold (Mich. State, 1949); Yale Rohlf (Washington, 1951); Gene Taft (California, 1951); and Joe Francis (Stanford, 1955)
Most yards returned—79, Gene Taft (California, 1951)

Punt Returns:

- Most punt returns—6, Lee Gustafson (USC, 1946)
Most yards returned—116, Dick Gray (Utah, 1949)

Scoring:

- Most touchdowns scored—3, Sam Baker (Utah & Washington, 1951); Earnel Durden (Washington, 1956) and Tom Berry (UCLA, 1956) Nub Beamer (WSC 1957)
Most points after attempted—9, Stan McGuire (Montana, 1949)
Most points after made—9, Stan McGuire (Montana, 1949)
Longest field goal made—46 yards, Ade Schwammel, 1933, against Fordham in New York City.
Most points scored—18, Sam Baker (Utah & Washington, 1951); Earnel Durden (Washington, 1956), and Tom Berry (UCLA, 1956) Nub Beamer (WSC 1957, Jim Stinnette (Idaho 1959)

INDIVIDUAL

(Season)

Rushing:

Most rushes—180, Sam Baker, (1951)
Most net yards—808, Sam Baker (1951)
Highest avg. per rush (min. 70 rushes—7.2 (71 rushes for 508)
Earnel Durden (1956)

Forward Passing:

Most attempts—120, Gene Morrow (1950)
Most completions—54, Gene Morrow (1950)
Most had intercepted—14, Gene Morrow (1950)
Highest percent completed (min. 50 atts.)—.643 (36 of 56) Ken
Carpenter (1948)
Highest percent completed (min. 75 atts.)—.549 (50 of 91)
Don Samuel (1947)
Most yards gained—615, Gene Morrow (1949)
Most touchdown passes—10, Ken Carpenter (1948)

Total Offense:

Most rushing and passing plays—202, Joe Gray (1937) and Ken
Carpenter (1949)
Most yards gained rushing and passing—1082, Joe Francis (1957)
Highest avg. per play (min. 100 plays)—6.3 (173 plays for 1082
yards) Joe Francis (1957)

Pass Receiving:

Most passes caught—36, John Thomas (1950)
Most yards gained—351, Jack Gotta (1952); 350, John Thomas
(1950)
Most touchdown passes caught—4, Don Samuel (1948)

Punting:

Most punts—60 Sam Baker (1952)
Highest avg. per punt—(min. 25 punts) 41.8 (30 punts for 1255
yards) Ray Westfall (1955)

Interceptions:

Most passes intercepted—9, Bill Sheffold (1949)
Most yards returned—126, Bill Sheffold (1949)

Punt Returns:

Most punt returns—26, Bob Dethman (1940)
Most yards returned—253, Sterling Hammack (1957)

Kickoff Returns

Most kickoff returns—15, Ron Miller (1959)
Most Yards returned—453, Ron Miller (1959)

Scoring:

Most touchdowns scored—11, Sam Baker (1951)
Most points after attempted—33, Stan McGuire (1949)
Most points after made—29, Stan McGuire (1949)
Most field goals kicked—2 Ade Schwammel (1933) and Ted
Searle (1955 and 1957)
Most total points scored—67, Sam Baker (1951)

INDIVIDUAL

(Career)

Rushing:

Most rushes—487, Sam Baker

*441, Ken Carpenter

Most net yards gained—1947, Sam Baker

*1910, Ken Carpenter

Highest avg. per rush—(min. 200 rushes)—4.36 Joe Francis (314-

1369) 4.3 Ken Carpenter 4.0 Don Samuel (217-869)

3.99 Sam Baker

Forward Passing:

Most attempts—304, Gene Morrow

*289, Jim Withrow

Most completions—128, Gene Morrow

*124, Jim Withrow

Most had intercepted—31, Gene Morrow

*31, Jim Withrow

Highest percent completed (Min. 150 atts.)—

.571, Joe Francis (89 of 156)

.474, Don Samuel (102 of 215)

.435, Bob Dethman (70 of 161)

Most yards gained—1723, Gene Morrow

*1577, Jim Withrow

Most touchdown passes thrown—13, Gene Morrow

Total Offense:

Most rushing and passing plays—*607, Ken Carpenter

497, Sam Baker

Most yards gained rushing and passing—*2846, Ken Carpenter

2669, Joe Francis

2222, Don Samuel

Highest avg. per play (min. 250 plays)—

5.68, Joe Francis (470 for 2669)

5.14, Don Samuel (432 for 2222)

‡5.13, Joe Francis (270 for 1384)

Pass Receiving:

Most passes caught—77, John Thomas

*44, Ken Carpenter

Most yards gained—858, John Thomas

*692, Ken Carpenter

Most touchdown passes caught—7, Don Samuel; 6, Bob Laidlaw.

Punting:

Most punts—151, Jim Kisselburgh; 122, Sam Baker.

Highest avg. per punt (Min. 100 punts)—

39.1, Sam Baker (122 punts for 4775 yards)

36.9, Jim Kisselburgh (151-5566)

Interceptions:

Most passes intercepted—11, Bill Sheffold

* 9, Ken Carpenter

Most yards returned—142, Bill Sheffold

Punt Returns:

Most punt returns—*46, Ken Carpenter

38, Bob Dethman

Most yards returned—*596, Ken Carpenter

379, Dick Gray

Kickoff Returns:

Most kickoff returns—*38, Ken Carpenter

18, Tom Berry

Most yards returned—*820, Ken Carpenter

393, Tom Berry

Scoring:

Most touchdowns scored—23, Sam Baker
 *21, Ken Carpenter
 *20, Dick Twenge
 Most points attempted after TD—59, Stan McGuire
 Most points after made—38, Stan McGuire
 Most field goals kicked—4, Ted Searle
 Most total points scored—139, Sam Baker (23 TD's, 1 PAT)
 *126, Ken Carpenter
 *—Played 4 years
 ‡—One year remaining.

TEAM OFFENSE**(Single Game)****Rushing:**

Most rushes—78, Utah (1952)
 Most net yards—616, Utah (1951)
 Highest avg. per rush—9.5 (65 for 616) Utah (1951)

Forward Passing:

Most attempts—34, UCLA (146); Idaho (1947) and Stanford (1950)
 Most completions—19, California (1951)
 Most had intercepted—5, California and Portland U (1948); Washington (1950); and Oregon (1954)
 Highest percent completed (min. 10 atts.) .909 (10 of 11) Stanford (1957)
 Most yards gained—269, Idaho (1948)
 Most touchdowns by passing—3, California (1946); Nebraska (1947); WSC, Mich. State and Portland U (1948); Idaho (1951); and Stanford (1952)

Total Offense:

Most rushing and passing plays—92, Stanford (1950, and Utah (1952)
 Most yards gained rushing and passing—706, Utah (1951)
 Highest avg. per play—9.2 (77 for 706) Utah (1951)

Punting:

Most punts—13, USC (1952)
 Highest avg. per punt—(min. 5 punts)—48.0 (8 for 384) Idaho (1951)

Interceptions:

Most passes intercepted—7, Idaho (1946)
 Most yards returned—139, Montana (1949)

Punt Returns:

Most punt returns—9, Idaho (1959)
 Most yards returned—205, Montana (1949)

Kickoff Returns:

Most kickoff returns—9, (1952)
 Most yards returned—195, WSC (1948)

Miscellaneous:

Most first downs by rushing—23, Utah (1952)
 Most first downs by passing—11, UCLA (1946)
 Most total first downs—28, Utah (1952)
 Most penalties against—13, Brigham Young (1955)
 Most yards penalized—145, Brigham Young (1955)
 Most fumbles—10, Washington (1959)
 Most fumbles lost—5, Mich. State and Washington (1950); WSC (1952)

TEAM DEFENSE

(Single Game)

Rushing:

Fewest rushes—19, Washington (1946)

Fewest net yards—Minus 43, Portland U (1946)

Lowest avg. per rush—Minus 1.7 (26 rushes for minus 43 yards)
Portland U (1946)

Forward Passing:

Fewest attempts—3, Stanford (1952)

Fewest completions—1, Oregon (1946); and Washington (1956)

Most had intercepted—7, Idaho (1946)

Lowest percent completed (min. 10 atts.)—.143 (3 of 21) Stan-
ford (1946)

Fewest yards gained—6, Stanford (1952)

Total Defense:

Fewest rushing and passing plays—41, Oregon (1946) and Idaho
(1947)

Fewest yards gained rushing and passing—66, Montana (1950)

Lowest avg. per play—1.3 (51 plays for 66 yards) Montana
(1950)

Punting:

Most time opp. forced to punt—11, Stanford (1946)

Lowest avg. per punt (min. 5 punts)—23.6 (8 for 189) Oregon
(1946)

Miscellaneous:

Fewest total first downs—3, Oregon (1946)

Most penalties against opp.—19, California (1951)

Most yards penalized—115, UCLA (1952) and Northwestern
(1957)

Most fumbles by opp.—9, Stanford (1950)

Most fumbles lost—5, USC (1947); Stanford and Washington
(1950); Stanford (1952); Idaho (1954); and Missouri (1956)

TEAM OFFENSE

(Season)

Rushing:

Most rushes—559 (1957)

Most net yards gained—2478 (1957)

Highest avg. per rush—4.6 (328 for 1493) (1955)

Most yards per game—247.8 (1957)

Forward Passing:

Most attempts—212 (1948)

Most completions—100 (1948)

Most had intercepted—22 (1951)

Highest percent completed—.533 (40 of 75) (1956)

Most yards gained—1368 (1948)

Most touchdowns by passing—13 (1948)

Most yards per game—131.8 (1949)

Total Offense:

Most rushing and passing plays—697 (1948)

Most yards gained rushing and passing—3294 (1957)

Highest avg. per play—5.1 (402 for 2040) (1955)

Most yards per game—329.4 (1957)

Punting:

Most punts—91 (1939)

Fewest punts—48 (1956)

Highest avg. per punt—39.9 (67 for 2674 yards) (1951)

Interceptions:

Most passes intercepted—26 (1946) ; 25 (1949)
Most yards returned—436 (1959)

Punt Returns:

Most punt returns—42 (1940)
Most yards returned—536 (1949)
Highest avg. per return—17.9 (30 for 536) (1949)

Kickoff Returns:

Highest avg. per return—24.2 (36 for 872) (1959)

Scoring:

Most touchdowns scored—33 (1949)
Most points after made—29 (1949)
Most field goals kicked—2 (1933, 1955, and 1957)
Most total points—268 (1925)

Miscellaneous:

Most first downs by rushing—133 (1957)
Most first downs by passing—51 (1948)
Most total first downs—170 (1957)
Most penalties against—72 (1956)
Most yards penalized—732 (1956)
Most fumbles—42 (1959)
Most fumbles lost—26 (1954)

TEAM DEFENSE

(Season)

Rushing:

Fewest rushes—298 (1939)
Fewest net yards gained—781 (1939)
Lowest avg. per rush—2.6 (1939)
Fewest yards per game—86.8 (1939)

Forward Passing:

Fewest attempts—111 (1937)
Fewest completions—39 (1937)
Most passes had intercepted—26 (1946)
Lowest percent completed—.338 (51 of 151) (1940)
Fewest yards gained—511 (1937)
Fewest touchdowns by passing—3 (1955)
Fewest yards per game—56.8 (1937)

Total Defense:

Fewest rushing and passing plays—464 (1939)
Fewest yards gained rushing and passing—1671 (1937)
Lowest avg. per play—3.4 (1941)
Fewest yards per game—185.7 (1937)

Punting:

Most times opp. forced to punt—90 (1940)
Lowest avg. per punt—32.2 (1948)
Most punts had blocked—3 (1939)

Punt Returns:

Fewest punts returned—17 (1956)
Fewest yards returned—109 (1956)
Lowest avg. per return—5.8 (1957)

Interceptions:

Fewest Passes Intercepted—8 (1941, 1956 and 1957)

Fewest yards returned—41 (1956)

Kickoff Returns:

Lowest avg. per return—15.8 (1953)

Miscellaneous:

Fewest total first downs—79 (1939 and 1940)

Most times opp. penalized—64 (1951)

Most yards penalized—544 (1952)

Most fumbles by opp.—44 (1954)

Most fumbles lost—26 (1954)

Fewest points scored by opp.—0 (1907 team in six games)

OSC MEN NOW COACHING FOOTBALL

Ken Carpenter—Head Coach, Saskatchewan Roughriders
(Canada)

Len Younce—Asst. Coach, Saskatchewan Roughriders (Canada)

Bill Austin—Assistant Coach, Green Bay Packers (NFL)

Bud Gibbs—Asst. Coach, Oregon State College

Ron Siegrist—Assistant Coach, Oregon State College

Fred Burri—Assistant Coach, Mt. San Antonio JC, Pomona, Cal.

Jim Cordial—Assistant Coach, Oregon Technical Institute,
Klamath Falls

Dick Corrick—Asst. Coach, Iowa State University

Tom DeSylvia—Head Coach, Jefferson high, Portland

Joe Kasberger—Head Coach, St. Benedict's Prep, Newark, N.J.

Frank Negri—Assistant Coach, Notre Del Rio high, Sacramento,
Cal.

Ron Daniels—Head Coach, Tillamook high

Larry Stevens—Head Coach, Philomath high

Wes Hogland—Head Coach, Molalla high

Doug Hogland—Head Coach, Tillamook high

Andy Knudsen—Head Coach, St. Helens high

Lee Gustafson—Head Coach, South Salem high

Jack Pinion—Head Coach, Corvallis high

Bob Stevens—Head Coach, Acalanes high, Lafayette, Cal.

Bob Dungan—Head Coach, Hudson's Bay high, Vancouver,
Wash.

Tag McFadden—Head Coach, Corning high, Corning, Cal.

Bill Peden—Head Coach, Junction City high

Duke Moore—Head Coach, Beaverton

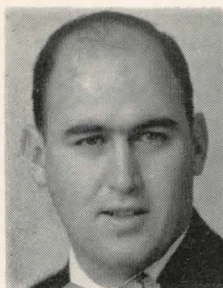
Jim Inglesby—Assistant Coach, Hi School in S.F. Bay area.

Rudy Ruppe—Head Coach, Reedsport high
 Gene Morrow—Head Coach, Newport high
 Tom Van Etten—Head Coach, Prineville high
 Paul Evensen—Assistant Coach, Medford high (Head Wrestling)
 Loyd Buettgenbach—Assistant Coach, Inglewood, Cal.
 Bob Hadraba—Assistant Coach, Del Norte high, Crescent City,
 Cal.
 Yale Rohlff—Head Coach, San Mateo high (Calif)
 Howard Buettgenbach—Assistant Coach, Torrance, Cal.
 Jim Luster—Assistant Coach, Albany high (Head Track)
 Gary McClain—Assistant Coach, Albany high (Head Wrestling)
 Dick Sutherland—Head Coach, Bandon high
 Tex Whiteman—Assistant Coach, Bandon high (Head Basket-
 ball)
 Dick Gray—Assistant Coach, Benson high, Portland (Head
 Basketball)
 Arvid Niemi—Assistant Coach, San Mateo high (Calif.)
 Cliff Snider—Assistant Coach, Clackamas high (Ath. Dir.)
 Bob Payne—Assistant Coach, Corvallis high
 Lew Williams—Assistant Coach, Corvallis high
 Wes Ediger—Assistant Coach, Dallas high
 Vern Steward—Head Coach, Eagle Point high
 Jim Mallon—Head Coach, Heppner high
 Jack Hoxie—Assistant Coach, Junction City high (Head
 Basketball)
 Joe Hellberg—Assistant Coach, Lebanon high (Head Baseball)
 Frank Roelandt—Assistant Coach, Medford high (Head Basket-
 ball)
 Eldore Baisch—Assistant Coach, McMinnville high (Head
 Basketball)
 George Crandall—Assistant Coach, Milwaukie high (Head
 Basketball)
 Jack Orr—Assistant Coach, Myrtle Point high (Head Basketball)
 Jerry Crimins—Assistant Coach, Newberg high (Head Basket-
 ball)
 Art Keith—Assistant Coach, Newberg high (Head Wrestling)
 Al Piche—Assistant Coach, Crater high (Head Baseball)
 Wayne Fox—Assistant Coach, North Bend high (Head Basket-
 ball)
 Bob Stolz—Assistant Coach, Pacific high (Head Basketball)
 Dick Bumula—Assistant Coach, Silverton high (Head
 Wrestling)
 Bobo Clingman—Head Coach, Thurston high, Springfield
 John Wyttenberg—Head Coach, Sweet Home high
 Norb Wellman—Assistant Coach, Tigard high (Head Baseball)
 John Abel—Assistant Coach, Alsea High (Head Basketball)
 Jim Withrow—Assistant Coach, Corvallis high
 John Witte—Assistant Coach, McLaren School, Woodburn
 Cal Hersey—Assistant Coach, Gresham high (Head Basketball)
 Earnel Durden—Assistant Hi School Coach, Los Angeles

1960 OSC COACHES



TOMMY PROTHRO
Head Coach



BOB WATSON
Senior Assistant



BOB ZELINKA
Line



BUD GIBBS
Assistant



RON SIEGRIST
Assistant



DOUG BRADLEY
Assistant

THE COACHES

TOMMY PROTHRO

Head Coach

King of single wing football and chief architect in Oregon State's rise as a grid power.

That's Tommy Prothro, the southern charmer who came to the Beavers in 1955 and within the short space of three years brought Oregon State a pair of Pacific Coast conference championships and Rose Bowl appearance.

His overall five-year record of 30-18-1 rates as best in the west for major schools, despite a losing campaign in 1959 when OSC dropped three games by a touchdown or less. Beaver fans beam with pride whenever the name Tommy Prothro is mentioned.

This one-time Duke university blocking back is the logical heir-apparent to the late Red Sanders' throne among the top single-wing masters of the nation. Prothro was with Sanders for nine years at a key assistant before he moved here as headman, and, of course, he played in that system under Wallace Wade at Duke.

Prothro's feats are practically legend around the west coast, for he accomplished virtually the impossible in record fashion. When Tommy came to OSC, the Beavers had just experienced their worst season in 55 years of college football. They had won the 1954 opener against Idaho, then lost eight in a row. All told, OSC scored only 60 points to the opposition's 296, as the Beavers dropped to the PCC cellar.

Then, in 1955, came Tommy Prothro. Oregon State surprised everyone but Prothro in placing second in the PCC race with a respectable 6-3 record. In 1956, it was OSC to an undisputed PCC championship and Rose Bowl bid against Iowa. The year 1957 found the Beavers in a tie for the league title with Oregon, but OSC was ineligible to return to Pasadena because of having been there the year before. Otherwise, Oregon State would have been the cinch choice, for the Beavers had an 8-2 record and beat Oregon, 10-7, in the final game of the season.

Injuries, and even death to all-coast center Buzz Randall hurt OSC in 1958, but even so Prothro's men wound up with a decent 6-4 record and 4th place PCC finish. As fate would have it, OSC lost three games by one TD or less in 1959—games that could easily have gone the other way. And consequently, Prothro lost more than he won for the first time in his athletic career, as player, assistant coach or head coach. Those close to Tommy feel this will never happen again.

The 39-year old mentor, son of J. Thompson "Doc" Prothro who at one time managed the Philadelphia Phils in baseball and for years was well-known in that sport, competed in football, basketball and track for Central high in his native Memphis, Tenn. That was 1934 through 1936. He also participated in those sports at Riverside Military Academy in 1936-37-38.

Tommy was a star blocking back under Coach Wallace Wade at Duke, playing against OSC in the "transplanted" Rose Bowl game of January 1, 1942, at Durham. He won the Jacobs award as the best blocker in the south and the Mills award as the best blocker in the east. He also competed in baseball and lacrosse at Duke from 1938 through 1942, when he graduated.

Prothro was a naval officer in World War II, and already had served a stint as line coach at Western Kentucky. After discharge in 1946, he coached the Vanderbilt university "B" squad and in 1947 became backfield coach under Sanders at Vanderbilt. Prothro went to UCLA with Sanders in 1949, as

backfield coach, and remained there until he took the OSC position.

Tommy, still well-known and well-liked in the LA area, developed some top backs as UCLA ruled the western roost and won the national title in 1954. Among those were Paul Cameron, Primo Villaneuva and Bob Davenport, although Oregon Staters would tell you their own Joe Francis was better than all three. Tommy took Francis when he was a sophomore, and made him into one of the top single-wing tailbacks of all-time. Beaver fans still like to remember Francis' great effort of 203 yards against Iowa in the 1957 Rose Bowl game.

Tommy's father, now semi-retired and living in Memphis, occasionally gets to watch Beaver teams perform, as does Tommy's mother. Tommy's wife is the former Shirley Seagle of Memphis. He has a daughter, Ann, who lives in Franklin, Kentucky.

ASSISTANT COACHES

BOB WATSON

Senior Assistant

One of Tommy Prothro's greatest attributes has been the ability to surround himself with hustling young assistants—men who eat, sleep and talk football. One falling in that category is Bob Watson, who in 1958 became senior assistant on Prothro's successful coaching corps.

Watson needs no introduction to state of Oregon sports fans, for he was one of the all-time greats in this state in both football and basketball. While a prep star at Medford high school, he won all-state honors in both sports and was widely sought by numerous colleges.

Watson enrolled at UCLA and played three seasons of varsity football there—both as end and back. He graduated from UCLA in 1951 and assisted with spring practice sessions there when free from his job with a metropolitan firm in that area.

When Prothro won the OSC coaching assignment in 1955, one of the first he contacted about becoming an assistant was Watson. The latter, of course, was on Tommy's first staff here in 1955 and has been a solid fixture since.

He is married, has two children and is 32 years old.

BOB ZELINKA

Line Coach

Small in size, but a true "fireball" when it comes to coaching zip and determination—that's a brief description of Bob "Tiger" Zelinka, Prothro's young capable line coach who came here with Tommy in 1955.

Zelinka, though highly firm with the men he coaches, nevertheless has been extremely popular with all. One of his greatest boosters is John Witte, all-American tackle in 1956, who was a Zelinka protege.

The "Tiger" was a prep star in Los Angeles and later became a prize guard at Santa Ana junior college before transferring to UCLA. He played for the Bruins in 1950 and 1951, graduating in 1952. Zelinka assisted with spring practice at UCLA and coached the line for San Diego Navy in 1952-1954. He then returned to UCLA as freshman line coach.

Zelinka, like all the other coaches, is a real single-wing expert who can show the players first-hand what he expects them to do. Just as important, he provides much of the spirit so necessary in daily workouts. He is 31 years of age, married, and the father of a daughter.

BUD GIBBS

Assistant Coach

One of the hardest-working members of the staff—a well known athletic figure throughout the state—is personable Bud Gibbs, who is one of a select number of athletes who won four varsity letters while in college.

Gibbs took over his new duties three years ago, after four successful seasons as head coach at nearby Albany high school. Prior to that, he had been head coach at Tigard high for three years, again with outstanding success.

Bud is one of those type persons everyone likes. He was that way in college, when he was a burly end in the seasons of 1945, 1947, 1948 and 1949, and he hasn't changed.

A fine all-round athlete in Hood River high, Bud came to OSC in 1945 and was in the service in 1946 before resuming his career here after discharge. Among other things, he was a top softball pitcher.

Gibbs is married and the father of three children. He is 32 years of age.

RON SIEGRIST

Assistant Coach

First player coached by Tommy Prothro at Oregon State to become a member of the Beaver staff—that's the story of young Ron Siegrist, who returned to his alma mater two years ago.

Ron was blocking back, co-captain and signal-caller on Prothro's first OSC team in 1955 that surprised all by finishing second in the PCC race. Prior to that, Siegrist had played t-formation football under Kip Taylor here in 1952 and 1953 but did not participate in 1954.

The new addition to the staff was a highly-successful prep mentor at Notre Del Rio high in Sacramento from 1956 through 1958. His last club there was ranked No. 1 Class A in all northern California, as he used the identical system to that employed by Prothro.

As a player, Siegrist went all-out on every occasion, and was regarded as one of the sharpest signal-callers in the trade. He is married, 29 years of age, and the father of three children.

DOUG BRADLEY

Assistant Coach

Newest member of the staff, and certain to be a valuable asset, is handsome Doug Bradley who joined the Beavers in time for last spring practice.

Bradley, 26, originally from Los Angeles, played three years of varsity football at UCLA under the late Red Sanders. At the time, Tommy Prothro then was Sanders' top assistant, prior to moving to OSC.

Doug was a tailback on UCLA's national championship club of 1954. Beaver fans should remember him well, for he played with the Bruins who laced OSC, 61-0, that season for the worst defeat in Oregon State grid history.

Following graduation, Bradley became an assistant coach under Jim Myers at Iowa State. He was there one season, then moved with Myers to Texas A. & M. where he spent two campaigns. As would be expected in his case, Doug came to OSC highly-recommended. He has a fine background to go along with a warm personality.

Bradley is married and the father of three children.

FINAL FOOTBALL STATISTICS

1959

RUSHING						
	tcb	yg	yl	nyg	avg.	td
Kasso, tb	94	485	140	345	3.5	5
Stinnette, fb	119	334	30	304	2.6	5
Miller, wb	38	206	11	195	5.1	
Paulson, tb	46	206	38	168	3.7	
Sanchez, tb	29	167	51	116	4.0	1
Gilmore, wb	29	125	27	98	3.4	1
Marshall, fb	17	60	3	57	3.3	
Greminger, fb	10	52	2	50	5.0	
Thomas, we	2	23	0	23	11.5	
Marsh, wb	9	30	8	22	2.4	
Parrott, we	1	13	0	13	13.0	
Harbin, tb	13	21	48	-27	-2.1	
Center pass	1	0	18	-18		
<hr/>						
Oregon State	411	1722	376	1346	134.6	12
Opponents	541	2087	192	1895	189.5	17
PASSING						
	pa	pc	pi	nyg	pct.	td
Sanchez, tb	45	19	3	305	.423	3
Kasso, tb	42	12	4	209	.286	1
Harbin, tb	33	13	4	180	.394	2
Paulson, tb	14	4	3	53	.286	
Greminger, fb	1	0	0	0	.000	
Stinnette, fb	1	0	1	0	.000	
<hr/>						
Oregon State	136	48	15	747	.353	6
Opponents	178	82	12	979	.461	6
TOTAL OFF.						
	pls.	nyr	nyp	tny	av/pl	tdr
Kasso, tb	139	345	209	554	4.0	6
Sanchez, tb	74	116	305	421	5.7	4
<hr/>						
Opponents	719	1895	979	2874	287.4	23
Oregon State	544	1346	747	2093	209.3	18
SCORING						
	td	r	p	k	fg	tp
Kasso	5	7-5	1-0			40
Stinnette	5	2-0				30
Gilmore	3		-1			20
Thomas	2			4-2	1-1	17
Doman	2					12
L. Sanchez	2		2-2			12
Marsh	1			1-0	1-1	9
Miller	1	1-1				8
Palmateer	1					6
Hake	1					6
Marshall		1-1				2
Greminger		2-1				2
Parrott			-1			2
Paulson		2-0				
<hr/>						
Conversions						
Oregon State	23	15-8	3-2	5-2	2-2	166
Opponents	24	3-2	6-4	15-13	5-3	178
Miscellaneous						
	OSC			OPP		
First downs, rush	69			116		
First downs, pass	37			42		
First downs, penalty	8			8		
TOTAL FIRST DOWNS	114			165		
Penalties/yards lost	53-494			42-346		
Fumbles/balls lost	*42-17			28-14		

*Indicates new OSC season record

PUNTING				RECEIVING			
	no.	yds.	avg.		no.	yds.	td.
Paulson	32	1458	45.5*	Thomas, we	11	150	2
Kasso	19	740	38.9	Doman, se	10	156	2
Sanchez	4	135	33.8	Miller, wb	8	144	
Harbin	2	67	33.5	Gilmore, wb	6	107	1
				Marsh, wb-se	4	66	1
Oregon State	57	2358	41.3*	Thompson, se	3	40	
Opponents	55	1959	35.6	Thiel, we	2	37	

PUNT RETURNS				INTERCEPT'NS				
	no.	yds.	avg.	td.		no.	yds.	td.
Gilmore	12	120	10.0		Hake	2	96	1
Miller	17	92	5.4		Paulson	2	18	
Marsh	6	31	5.2		Marsh	2	16	
Sullivan	2	16	8.0		Palmateer	1	79	1
Kasso	1	11	11.0		Marshall	1	75	
S. Sanchez	1	9	9.0		L. Sanchez	1	63	1
Oregon State	39	279	7.2	0	Criner	1	34	
Opponents	32	368	11.5	1	Bashor	1	19	

KICKOFF RETURNS								
	no.	yds.	avg.	td.		no.	yds.	td.
Miller	15*	453*	30.1	1	Gilmore	0*	27	
Gilmore	4	123	30.8	1	Oregon State	12	431*	3
Stinnette	6	112	18.7		Opponents	15	151	0
Paulson	3	98	32.7					
Sullivan	1	29	29.0					
L. Sanchez	2	19	9.5					
Marsh	1	14	14.0					
Harbin	1	14	14.0					
Doman	1	6	6.0					
Kasso	2	4	2.0					

Oregon State	36	872	24.2*	2
Opponents	34	494	14.5	0

SCORING BY QUARTERS:

	1	2	3	4
Oregon State	21	49	41	55
Opponents	42	41	44	51

Bruce Hake set new interception yards return record for OSC career with 145 yds. Dainard Paulson in two seasons punted 67 times for 2908 yards43.4 yds./punt.

OSC GENERAL OUTLOOK, 1960

Optimistic Side of Situation:

1. The Beavers have 15 returning lettermen from 1959, including starting wingback Art Gilmore who conceivably could become one of the best ever to play here. In some cases, and in certain positions, men called upon to replace 1959 regulars are better than their predecessors.

2. Spirit was excellent in spring drills and much accomplished. Oregon State probably will be stronger defensively than a year ago when it won three and lost seven games.

3. Passing is sure to be improved—thanks to a sophomore southpaw tailback named Terry Baker. He can throw a football with the best of 'em.

4. End Aaron Thomas and guard John Cadwell could be exceptional linemen. Both were very impressive last spring and rank as all-coast possibilities, as well as good prospects for the pros later on.

5. Coach Tommy Prothro's record speaks for itself. He's won 30, lost 18 and tied one in five seasons as the Beaver helm. Only once in all his years of experience as player and coach has he been associated with a team that lost more than it won—last year at Oregon State. It isn't likely he'll let it happen again.

Pessimistic Side of Situation:

1. Oregon State lost 14 experienced lettermen, 10 of whom were starting regulars. Of this group, 10 were three-year award winners—all well versed in single wing football. Top men like Jim Stinnette, Howard Hogan, Jerry Doman and Don Thiel, just to name a few, are hard to replace.

2. It's a rugged schedule ahead, one of the toughest ever for OSC. The Beavers open at Los Angeles against USC, then journey back to Iowa the following week. After that, successive dates against Houston, Indiana, Idaho, Washington, California, Washington State, Stanford and Oregon.

3. Beavers haven't much experienced depth at certain positions and may have to call on inexperienced sophomores. Anything near the amount of injuries that plagued OSC last two years might prove near-disastrous.

4. In final spring game against an all-star alum team, squad showed definite weaknesses as well as strengths in losing, 20-10. Will there be enough time to correct those mistakes?

5. Oregon State's 3-7 won and lost mark in 1959 was discouraging to staff and followers, as well as players. Can the 1960 Beavers recoup their forces and get back on the winning track once again?

1959 Returning Lettermen (15)

Ends—Aaron Thomas (317½), Leon Criner (140½), Amos Marsh (100½).

Tackles—Mike Kline (215½), Neil Plumley (268½), Earl Woodward (176½).

Guards—Denny Pieters (204), John Cadwell (250).

Centers—Doug Bashor (194), John Hadraba (191½).

Wingbacks—Art Gilmore (226), Ron Miller (255½).

Blocking Backs—Marne Palmateer (202½).

Fullbacks—Chuck Marshall (226).

Tailbacks—Don Kasso (218½).

Other Lettermen (3)

Roger Johnson, end, lettered in 1958 (235)

Mike Dolby, guard, lettered in 1958 (74½)

Grimm Mason, tailback, lettered in 1958 (52)

TENTATIVE ORDER OSC SUBSTITUTIONS

1960

Weakside End (Left End):

1. Aaron Thomas, 205, S. Let.
2. Roger Johnson, 193, Jr. Let.
3. Skip Russell, 190, Jr.
4. Mike Youngquist, 200, Soph.

Weakside Tackle (Left Tackle):

1. Mike Kline, 230, Jr. Let.
2. Earl Woodward, 210, Sr. Let.
3. Jim Funston, 220, Soph.

Weakside Guard (Left Guard):

1. Denny Pieters, 210, Jr. Let.
2. Ross Cariaga, 193, Soph.
3. George Gness, 210, Soph.
4. Mike Dolby, 203, Jr. Let.

Center:

1. Doug Bashor, 200, Sr. Let.
2. Dick DeBisschop, 196, Soph.
3. John Farrell, 200, Soph.
4. John Hadraba, 200, Sr. Let.

Strongside Guard (Right Guard):

1. John Cadwell, 220, Jr. Let.
2. Norby Keolanui, 200, Jr. Res.
3. Mike Watters, 187, Jr. Tr.

Strongside Tackle (Right Tackle):

1. Neil Plumley, 240, Jr. Let.
2. Earl Woodward, 210, Sr. Let.
3. Jim Galyen, 185, Soph.

Strongside End (Right End):

1. Amos Marsh, 202, Sr. Let.
2. Leon Criner, 195, Sr. Let.
3. Fred Jones, 188, Soph.

Wingback (Right Half):

1. Art Gilmore, 190, Sr. Let.
2. Ron Miller, 170, Sr. Let.
3. Gene Hilliard, 163, Jr. Tr.
4. Gary Casey, 198, Soph.

Blocking Back (Quarterback):

1. Marne Palmateer, 185, Jr. Let.
2. Tim Ankerson, 186, Soph.
3. Bill Sullivan, 175, Jr. Res.

Fullback:

1. Hank Rivera, 180, Jr. Tr.
2. Chuck Marshall, 190, Sr. Let.
3. Frank Greminger, 190, Jr.

Tailback (Left Half):

1. Don Kasso, 185, Jr. Let.
2. Terry Baker, 195, Soph.
3. Bob Lazark, 175, Soph., or
Earl Harbin, 200, Jr. (Offensive)
Rich Brooks, 185, Soph, or
Grimm Mason, 185, Sr. Let. (Defense)

1959 LETTERMEN LOST (14)

Ends—Jerry Doman, Don Thiel, George Thompson

Tackles—Ed Kaohelaulii, Howard Hogan.

Guards—George Enderle, Sonny Sanchez, Denny Brundage.

Centers—Bruce Hake.

Wingbacks—none.

Blocking Backs—Bob Farrell, Derald Swift.

Fullbacks—Jim Stinnette.

Tailbacks—Dainard Paulson, Larry Sanchez.

OSC ALPHABETICAL ROSTER 1960

Name	Pos.	Ht.	Wt.	Age	Class	Exp.	Min.	Home Town & School
Tim Ankerson	BB	5-10	186	19	Soph.	Fr.		Santa Ana Cal. (Mater Dei)
Terry Baker	TB	6-3	195	19	Soph.	None		Portland, Ore. (Jefferson)
Doug Bashor**	C	6-0	200	20	Sr.	2V	194	Portland, Ore. (Cleveland)
Rich Brooks	FB	5-11	185	19	Soph.	Fr.		Grass Valley, Cal. (Nevada Union)
John Cadwell*	SG	6-1	220	20	Jr.	IV	250	Lafayette, Cal. (Acalanes)
Ross Carriaga	WG	5-9	193	19	Soph.	Fr.		Fresno, Cal.
Gary Casey	WB	6-2	198	19	Soph.	Fr.		Concord, Cal. (Mt. Diablo)
Leon Criner**	SE	6-1	195	22	Sr.	2V	140½	Canoga Park, Cal.
Dick DeBisschop	C	6-0	196	20	Soph.	Fr.		San Anselmo, Cal. (Drake)
Mike Dolby*	WG	6-2	203	21	Jr.	IV		Hoquiam, Wash.
John Farrell	C	6-1	200	19	Soph.	Fr.		Sacramento, Cal. (Notre Del Rio)
Jim Funston	WT	6-0	220	20	Soph.	Fr.		Medford, Ore.
Jim Galyen	ST	6-1	185	19	Soph.	Fr.		Hollydale, Cal.
Art Gilmore*	WB	6-0	190	22	Sr.	IV	226	Riverside, Cal.
George Gnos	WG	6-1	210	18	Soph.	Fr.		Novato, Cal.
Frank Greminger	SE	6-0	190	21	Jr.	IV	56½	Gardena, Cal.
Ken Haack	WE	6-1	193	19	Soph.	Fr.		Vancouver, Wash. (Ft. Vancouver)
John Hadraba*	C	6-0	200	21	Sr.	2V	191½	North Hollywood, Cal.
Earl Harbin	TB	6-1	200	21	Jr.	IV	53	Honolulu, Hawaii (Kamehameha)
Gene Hilliard	WB	5-8	163	21	Jr.	2JC		Weed, Cal.
Ladd Horn	BB	5-9	175	19	Soph.	Fr.		Pendleton, Ore.
Clyde Huyck	FB	5-8	170	21	Soph.	1JC		Vallejo, Cal.
Roger Johnson*	WE	6-2	193	20	Jr.	IV		Coos Bay, Ore. (Marshfield)

Fred Jones	SE	5-10	188	19	Soph.	Fr.	218½	Oroville, Cal.
Don Kasso*	TB	5-11	185	20	Jr.	IV	41	Berkeley, Cal. (Berkeley)
Norby Keolanui	SG	6-0	200	20	Jr.	IV		Anaheim, Cal.
John Kirby	FB	6-0	210	19	Soph.	1JC		Santa Cruz, Cal.
Mike Kline*	WT	6-0	230	21	Jr.	IV	215½	Beaverton, Ore.
Bob Lazark	TB	5-11	175	19	Soph.	Fr.		Sacramento, Cal. (Notre Del Rio)
Amos Marsh*	SE	6-1	202	21	Sr.	2V	100½	Wallowa, Ore.
Chuck Marshall**	FB	6-2	193	21	Sr.	2V	226	San Francisco, Cal. (Mission)
Grimm Mason*	TB	5-11	185	21	Sr.	2V	7½	Watsonville, Cal.
Felix Mazzacco	SG	5-9	205	19	Soph.	Fr.		Stockton, Cal.
Fred Miller	ST	5-11	190	19	Soph.	Fr.		Stockton, Cal. (Franklin)
Ron Miller*	WB	5-10	170	21	Sr.	2V	255½	Los Angeles, Cal. (Washington)
Dick Nolan	SE	6-3	210	19	Soph.	1JC		San Mateo, Cal.
Marne Palmateer*	BB	5-11	190	20	Jr.	IV	202½	Los Altos, Cal. (Mountain View)
Denny Pieters*	WG	6-0	210	19	Jr.	IV	204	Salem, Ore. (South Salem)
Neil Plumley*	ST	6-6	240	21	Jr.	IV	268½	Medford, Ore.
Hank Rivera	FB	5-11	180	21	Jr.	2JC		Los Angeles, Cal. (Belmont)
Skip Russell	WE	6-0	190	20	Jr.	None		Aberdeen, Wash.
Bob Schmidt	WT	6-2	210	20	Soph.	Fr.		Whittier, Cal.
Bill Sullivan	BB	5-9	175	20	Soph.	IV	29½	Crescent City, Cal.
Aaron Thomas*	WE	6-3	205	22	Sr.	2V	317	Weed, Cal.
Ernie Thomsen	WE	6-1	186	18	Soph.	Fr.		Torrance, Cal.
Mike Watters	SG	6-0	187	21	Jr.	2JC		Novato, Cal.
Earl Woodward**	WT	6-2	210	22	Sr.	2V	176½	Riverside, Cal.
Mike Youngquist	SE	6-2	200	18	Soph.	Fr.		Salem, Ore. (North Salem)

SINGLE-WING SYMBOLS

WE—Weakside end WT—Weakside tackle WG—Weakside guard SG—Strongside guard ST—Strongside tackle
 SE—Strongside end BB—Blocking back TB—Tailback WB—Wingback

* Denotes varsity letters already earned

THUMBNAIL SKETCHES OF BEAVERS

Weakside End (Left End):

AARON THOMAS, 6-3, 205, sr. letterman from Weed Cal. Played 317 minutes in '59, led squad in receiving with 11 for 150 yards and two TD's. Conceivably could become best weakside end since Tommy Prothro came here in 1955. Fine speed, good attitude and smart. Pros are interested. ROGER JOHNSON, 6-2, 193, jr. letterman from Coos Bay, Ore. Lettered two years ago, not in school in '59. Great prep halfback and good basketball player as well. Limited in spring drills because of bad foot. SKIP RUSSELL, 6-0, 190, jr. from Aberdeen, Wash. Has not played college ball, despite fine prep record. Came out last spring and showed promise. May become good punter, too.

Weakside Tackle (Left Tackle):

MIKE KLINE, 6-0, 230, jr. letterman from Beaverton, Ore. Played 215½ minutes as sophomore, developed well towards end of season and in spring drills. Strong and willing. Could be topflight tackle. JIM FUNSTON, 6-0, 220, soph. from Medford. Out with injuries as freshman and laid out of competition last year. All-state as prepper. EARL WOODWARD, 6-2, 210, Sr. letterman from Riverside, Cal. Played 176½ minutes last year as both left and right tackle. Very versatile, and actually should be listed ahead of Funston.

Weakside Guard (Left Guard):

DENNY PIETERS, 6-0, 210, jr. letterman from Salem, Ore. (South Salem). With 204 minutes as sophomore, now ready for step up to regular. Fine potential for greatness. Extremely tough, gives it the all-out effort. ROSS CARIAGA, 5-9, 193, sophomore from Fresno, Cal. Looked good as freshman two years ago, not in school last year. Impressive in spring practice. GEORGE GNOSS, 6-1, 210 soph. from Novato, Cal. Fine prep record, could develop in time.

Center:

DOUG BASHOR, 6-0, 200, sr. letterman from Portland, Ore. (Cleveland). Played 194 minutes as junior. Spirited type performer, loads of desire. Has grown in size, improved in prowess last two years. Good, steady player. JOHN FARRELL, 6-1, 200, soph. from Sacramento, Cal. (Norte Del Rio). Looked about as good as any of centers in spring drills. Could move up any time. DICK DE BISSCHOP, 6-0, 196, soph from San Anselmo, Cal. One of top linebackers on squad, likely to be used most defensively. JOHN HADRABA, 6-0, 200, sr. letterman from North Hollywood, Cal. Had 191½ minutes last year, and at times looked good. Also catcher on baseball team.

Strongside Guard (Right Guard):

JOHN CADWELL, 6-1, 220, jr. letterman from Lafayette, Cal. (Acalanes). 250 minutes in 1959. Sure to be one of squad's best all-around players. Already has pro scouts watching anxiously. Big, tough and quick. NORBY KEOLANUI, 6-0, 200, junior holdover from Anaheim, Cal. With only 40 minutes last year, did not letter. Originally came here from Olympic JC in Washington. MIKE WATTERS, 6-0, 187, junior transfer from Novato, Cal. Transferred from Marin JC. Rugged, despite lack of size, and should provide depth at this position.

Strongside Tackle (Right Tackle):

NEIL PLUMLEY, 6-6, 240, jr. letterman from Medford, Ore. Got good start as soph with 268½ minutes. Biggest man on squad and could be one of best. All-State in both football and track as prepper. Hold all-time OSC shotput record of 54-7½. Tough to dislodge. JIM GALYEN, 6-1, 185, soph. from

Hollydale, Cal. Not big for a tackle, but a lad with hustle and desire. Woodward also plays this position.

Strongside End (Right End):

AMOS MARSH, 6-1, 202, sr. letterman from Wallowa, Ore. Fastest man on squad, a 9.5 sprinter in 100-yard dash in track. Moved from wingback to end, but missed spring practice because of track. LEON CRINER, 6-1, 195, sr. letterman from Canoga Park, Cal. Was shifted to end last year, after season as tailback. Fine pitcher in baseball, who underwent knee operation last winter. Appears to have recovered nicely.

FRED JONES, 5-10, 188, soph from Oroville, Cal. Moved up to No. 3 spot when George Thompson, first-stringer, failed to return because of knee injury.

Wingback (Right Half):

ART GILMORE, 6-0, 190, sr. letterman from Riverside, Cal. Lone returning regular from last year, had 226 minutes service despite injuries. Underwent knee operation last winter. One of best natural athletes on squad. Won all-America JC honors at Riverside before transferring here and once ran 440 in 48.6. Also a past national golden gloves runner-up in boxing. RON MILLER, 5-10, 170, sr. letterman from Los Angeles (Washington). Second nationally in kickoff returns with 453 yards for 30.1 average last year. Small but fast and fair pass receiver. GENE HILLIARD, 5-8, 163, jr. transfer from Weed, Cal. Had two years at Yuba JC in Marysville, Cal. Good speed and can help add depth to what may be OSC's strongest position.

Blocking Back (Quarterback):

MARNE PALMATEER, 5-11, 190, jr. letterman from Mountainview, Cal. Found self last year with 202½ minutes and was near-regular. With normal improvement, could be top-flight blocking back. TIM ANKERSON, 5-10, 186, soph. from Santa Ana, Cal. Came fast in spring drills and not far off starting pace. Brother Tim played for OSC couple seasons ago. LADD HORN, 5-9, 175, soph. from Pendleton. Small but determined and tough. Was star halfback as prep, won freshman award here last year.

Fullback:

HANK RIVERA, 5-11, 180, jr. transfer from Los Angeles (Belmont). Was at LA City college for spell, and has had benefit of two spring drills and one season as "redshirt." Formerly was end, but good enough athlete to play almost anywhere. Extremely tough and showed promise of becoming a fine runner. CHUCK MARSHALL, 6-2, 193, sr. letterman from San Francisco (Mission). Played 226 minutes last year, mostly as defensive back where he excels. Carried 17 times for 3.3 average. FRANK GREMINGER, 6-0, 190, jr. holdover from Gardena, Cal. Missed lettering last year with 56½ minutes. Ran hard in spring game, showed promise.

Tailback (Left Half):

DON KASSO, 5-11, 185, jr. letterman from Berkeley, Cal. An amazingly deceptive runner, needing only to improve on his passing to become fine tailback. Led squad in rushing as sophomore with 345 net yards on 94 carries. Scored five TD's and total of 40 points, also tops for squad in 1959. Hard worker, good attitude. TERRY BAKER, 6-3, 195, soph. from Portland (Jefferson), Ore. Brilliant record as prep star, all-state in three sports. Didn't play football as freshman, concentrating instead on basketball where he topped Rooks in scoring. Showed grid possibilities in spring drills. Excellent southpaw passer, strong runner. BOB LAZARK, 5-11, 175, soph. from Sacramento, Cal. (Notre Del Rio). One of top Rook gridmen last fall. Not par-

ticularly outstanding in any one category, but dependable in all. EARL HARBIN, 6-1, 200, jr. holdover from Honolulu. Missed lettering in '59 with only 53 minutes. Fine left-hand passer, needs to improve on running. RICH BROOKS, 5-11, 185, soph. from Grass Valley, Cal. (Nevada Union) destined for lots of defensive duty in secondary. GRIMM MASON, 5-11, 185, sr. letterman from Watsonville, Cal. "Hard-luck Kid" of squad, due to knee injuries that sidelined him most of past two seasons. May be limited to only defensive duties.

OSC INDIVIDUAL SPECIALISTS 1960

PASSERS:

Kasso
Baker
Harbin
Lazark

PUNTERS:

Kasso
Russell
Baker
Rivera

CONVERSION

KICKERS:

Ankerson
Thomas
Rivera
Marsh

CONVERSION

HOLDERS:

All tailbacks

KICKOFF MEN:

Marsh
Rivera
Thomas
Ankerson

Pronunciation Guide of OSC Players

Bashor— BASH - er
Cadwell— CAD - well
Cariaga— Care - ee - AH - guh
Dolby— DOLE - bee
Galyen— GAL - yun
Gross— NOSS
Haack— HACK
Hadraba— HAD - dru - buh
Hilliard— HILL - yurd
Howery— HOW - ree
Kasso— KASS - oh
Keolanui— Kayo - luh - NEW - ee
Lazark— Luh-ZARK
Mazzacco— Muh - ZAH - ko
Palmateer— Paul - muh - TEER
Pieters— Peters
Plumley— PLUM - lee
Rivera— Ruh - VEER - Ruh
Watters— Waters

Staff:

Prothro— PROW - throw
Zelinka— Zuh - LINK - uh
Barratt— Barrutt
Neland— Neelund

The Opponents

1. Southern California

Sept. 16 at Los Angeles

Coach—Johnny McKay

Offensive System—T-Formation

Nickname—Trojans

Colors—Cardinal and Gold

Athletic Director—Jess Hill

Publicity Director—Don Simonian

Enrollment—17,095

Location—Los Angeles

Stadium—Memorial Coliseum, Capacity 101,528

Conference—Big Five

1959 Record—Won 8, Lost 2

PAST SCORES:

1914—Oregon State, 38-6	1937—Tie, 12-12
1916—Oregon State, 16-7	1938—Southern Cal, 7-0
1921—Southern Cal, 7-0	1939—Southern Cal, 19-7
1924—Southern Cal, 17-3	1940—Tie, 0-0
1925—Southern Cal, 28-0	1941—Southern Cal, 13-7
1926—Southern Cal, 17-7	1945—Southern Cal, 34-7
1927—Southern Cal, 13-12	1946—Oregon State, 6-0
1928—Southern Cal, 19-0	1947—Southern Cal, 48-6
1929—Southern Cal, 21-7	1948—Southern Cal, 21-6
1930—Southern Cal, 27-7	1951—Southern Cal, 16-14
1931—Southern Cal, 30-0	1952—Southern Cal, 28-6
1932—Southern Cal, 10-0	1953—Southern Cal, 37-0
1933—Tie, 0-0	1954—Southern Cal, 34-0
1934—Tie, 6-6	1956—Southern Cal, 21-13
1936—Southern Cal, 38-7	1957—Oregon State, 20-0
1935—Oregon State, 13-7	1958—Southern Cal, 21-0
	1959—Southern Cal, 27-6

Total Games Won—USC 24, OSC 5, Ties 4

Total Points Scored—USC 591, OSC 226

2. Iowa

Sept. 24 at Iowa City

Coach—Forest Evashevski

Offensive system—Winged-T

Nickname—Hawkeyes

Colors—Black and Gold

Athletic Director—Forest Evashevski

Publicity Director—Eric Wilson

Enrollment—10,516

Location—Iowa City, Iowa

Stadium—Iowa stadium, Capacity 60,000

Conference—Big Ten

1959 record—Won 5, lost 4

PAST SCORES

1956—Iowa, 14-13	1956—Iowa, 35-19 (Rose Bowl game of Jan. 1, 1957)
------------------	--

Total games won—Iowa 2, OSC none

Total points scored—Iowa 49, OSC 32

3. Houston

Oct. 1 at Portland

Coach—Harold Lahar
Offensive system—T-formation
Nickname—Cougars
Colors—Scarlet and White
Athletic Director—Harry Fouke
Publicity Director—Ted Nance
Enrollment—12,357
Location—Houston, Texas
Stadium—Rice, capacity 70,000
Conference—None
1959 record—Won 3, lost 7

(NOTE: Oregon State and Houston have never met previously in football competition)

4. Indiana

Oct. 8 at Bloomington

Coach—Phil Dickens
Offensive system—Single wing
Nickname—Hoosiers
Colors—Cream and Crimson
Athletic Director—Frank Allen
Publicity Director—Tom Miller
Enrollment—23,531
Location—Bloomington, Ind.
Stadium—Indiana, Capacity 48,344
Conference—Big Ten
1959 record—Won 4, lost 4, tied 1

(NOTE: Oregon State and Indiana never have met previously in football competition)

5. Idaho

Oct. 15 at Moscow

Coach—Skip Stahley
Offensive System—T-formation
Nickname—Vandals
Colors—Silver and Gold
Athletic Director—Skip Stahley
Publicity Director—Tom Hartley
Enrollment—3,900
Location—Moscow, Idaho
Stadium—Neale, Capacity 17,500
Conference—None
1959 Record—Won 1, lost 9

PAST SCORES:

1913—Oregon State, 3-0	1935—Oregon State, 13-0
1914—Oregon State, 26-0	1937—Idaho, 7-6
1915—Oregon State, 40-0	1938—Idaho, 13-0
1916—Oregon State, 26-0	1939—Oregon State, 7-6
1917—Oregon State, 26-6	1940—Oregon State, 41-0
1923—Idaho, 7-0	1941—Oregon State, 33-0
1924—Idaho, 22-0	1942—Oregon State, 32-0
1925—Oregon State, 16-7	1945—Oregon State, 34-0
1926—Oregon State, 3-0	1946—Oregon State, 34-0
1927—Idaho, 12-7	1947—Oregon State, 33-6
1929—Oregon State, 27-0	1948—Oregon State, 27-12

1949—Oregon State, 35-25
1950—Oregon State, 34-19
1951—Oregon State, 34-6
1952—Idaho, 27-6
1953—Oregon State, 19-0
1954—Oregon State, 13-0

1955—Oregon State, 33-14
1956—Oregon State, 14-10
1957—Oregon State, 20-0
1958—Oregon State, 20-6
1959—Oregon State, 66-18

Total Games Won—OSC 27, Idaho 6
Total Points Scored—OSC 729, Idaho 213

6. Washington

Oct. 22 at Portland

Coach—Jim Owens
Offensive System—Split-T
Nickname—Huskies
Colors—Purple and Gold
Athletic Director—George Briggs
Publicity Director—Gordy Green
Enrollment—16,202
Location—Seattle, Washington
Stadium—WU Stadium, Capacity 55,500
Conference—Big Five
1959 Record—Won 9, lost 1

PAST SCORES:

1897—Oregon State, 16-0
1902—Washington, 16-6
1903—Washington, 5-0
1904—Oregon State, 26-5
1905—Oregon State, 18-0
1906—Tie, 0-0
1908—Washington, 32-0
1909—Washington, 21-0
1910—Washington, 22-0
1911—Washington, 34-0
1924—Washington, 6-3
1928—Oregon State, 29-0
1934—Washington, 14-7
1936—Washington, 19-7
1937—Oregon State, 6-3
1938—Oregon State, 13-6
1939—Oregon State, 13-7
1940—Washington, 19-0
1941—Oregon State, 9-6
1942—Washington, 13-0
1943—Washington, 13-0
1946—Oregon State, 21-12

1912—Washington, 9-3
1913—Washington, 47-0
1914—Tie, 0-0
1916—Washington, 35-0
1917—Tie, 0-0
1918—Washington, 6-0
1920—Oregon State, 3-0
1921—Oregon State, 24-0
1922—Washington, 14-3
1923—Washington, 14-0
1947—Oregon State, 14-7
1948—Tie, 14-14
1949—Oregon State, 7-3
1950—Washington, 35-6
1951—Oregon State, 40-14
1952—Washington, 38-13
1953—Washington, 28-0
1954—Washington, 17-7
1955—Oregon State, 13-7
1956—Oregon State, 28-20
1957—Washington, 19-6
1958—Oregon State, 14-12
1959—Washington, 13-6

Total Games Won—Washington 24, OSC 18, Ties 4
Total Points Scored—Washington 711, OSC 381

7. California

Oct. 29 at Corvallis

Coach—Marvin Levy
System—Split-T Formation
Nickname—Golden Bears
Colors—Blue and Gold

Athletic Director—Pete Newell
Publicity Director—Wiles Hallock
Enrollment—18,145
Location—Berkeley, California
Stadium—Memorial, Capacity 81,490
Conference—Big Five
1959 Record—Won 2, Lost 8

PAST SCORES:

1905—California, 10-0	1942—Oregon State, 13-8
1917—California, 14-3	1946—Oregon State, 28-7
1919—California, 21-14	1948—California, 42-0
1920—California, 17-7	1949—California, 41-0
1923—California, 26-0	1950—California, 27-0
1926—Oregon State, 27-7	1951—California, 35-14
1936—California, 7-0	1953—California, 26-0
1937—California, 24-6	1954—California, 46-7
1938—California, 13-7	1955—Oregon State, 16-14
1939—Oregon State, 21-0	1956—Oregon State, 21-13
1940—Oregon State, 19-13	1957—Oregon State, 21-19
1941—Oregon State, 6-0	1958—Oregon State, 14-8
	1959—Oregon State, 24-20

Total Games Won—California 14, OSC 11, Ties none
Total Points Scored—California 448, OSC 268

8. Washington State

Nov. 5 at Pullman

Coach—Jim Sutherland

Offensive System—T-Formation

Nickname—Cougars

Colors—Crimson and Grey

Athletic Director—Stan Bates

Publicity Director—Dick Fry

Enrollment—6083

Location—Pullman, Washington

Stadium—Rogers Field, Capacity 23,500

Conference—None

1959 Record—Won 6, Lost 4

1903—Oregon State, 6-0	1921—Wash. State, 7-3
1906—Oregon State, 29-0	1922—Oregon State, 16-0
1910—Oregon State, 9-3	1923—Tie, 3-3
1911—Oregon State, 6-0	1924—Oregon State, 14-13
1912—Wash. State, 10-9	1927—Oregon State, 13-6
1913—Oregon State, 10-2	1928—Wash. State, 9-7
1914—Oregon State, 7-0	1929—Wash. State, 9-0
1915—Wash. State, 29-0	1930—Wash. State, 14-7
1916—Oregon State, 13-10	1931—Wash. State, 7-6
1917—Wash. State, 6-0	1932—Wash. State, 7-6
1919—Oregon State, 6-0	1933—Oregon State, 2-0
1920—Wash. State, 28-0	1934—Wash. State, 31-0

1935—Wash. State, 26-13
1936—Oregon State, 16-6
1937—Wash. State, 9-0
1938—Oregon State, 7-6
1939—Oregon State, 13-0
1940—Oregon State, 21-0
1941—Wash. State, 7-0
1942—Wash. State, 26-13
1945—Wash. State, 33-0
1945—Wash. State, 13-6
1946—Oregon State, 13-12
1947—Wash. State, 14-13

1948—Tie, 26-26
1949—Oregon State, 35-6
1950—Wash. State, 21-7
1951—Wash. State, 26-13
1952—Wash. State, 33-20
1953—Oregon State, 7-0
1954—Wash. State, 34-6
1955—Oregon State, 14-6
1956—Oregon State, 21-0
1957—Oregon State, 39-25
1958—Wash. State, 7-0
1959—Wash. State, 14-0

Total Games Won—OSC 22, WSC 24, Ties 2
Total Points Scored—WSC, 542, OSC 475

9. Stanford

Nov. 12 at Palo Alto

Coach—Jack Curtice

Offensive System—T-Formation

Nickname—Indians

Colors—Cardinal and White

Athletic Director—Alfred R. Masters

Publicity Director—Don Liebendorfer

Enrollment—8421

Location—Palo Alto, California

Stadium—Stanford, Capacity 90,000

Conference—Big Five

1959 Record—Won 3, Lost 7

PAST SCORES:

1919—Stanford, 14-6
1921—Stanford, 14-7
1922—Stanford, 6-0
1925—Stanford, 26-10
1927—Stanford, 20-6
1929—Stanford, 40-7
1930—Stanford, 13-7
1931—Stanford, 25-7
1932—Stanford, 27-0
1934—Stanford, 17-0
1936—Stanford, 20-14
1937—Tie, 0-0
1938—Oregon State, 6-0
1939—Oregon State, 12-0
1940—Stanford, 28-14

1941—Oregon State, 10-0
1942—Stanford, 49-13
1946—Tie, 0-0
1947—Oregon State, 13-7
1949—Stanford, 27-7
1950—Stanford, 21-0
1951—Stanford, 35-14
1952—Stanford, 41-28
1953—Stanford, 21-0
1955—Oregon State, 10-0
1956—Oregon State, 20-19
1957—Oregon State, 24-14
1958—Oregon State, 24-16
1959—Stanford, 39-22

Total Games Won—Stanford 19, OSC 8, Ties 2
Total Points Scored—Stanford 539, OSC 281

10. Oregon

Nov. 19 at Corvallis

Coach—Len Casanova
Offensive System—T-formation
Nickname—Webfoots, Ducks
Colors—Green and Yellow
Athletic Director—Leo Harris
Publicity Director—Art Litchman
Enrollment—6,000
Location—Eugene, Oregon
Stadium—Hayward field, Capacity 23,500
Conference—None
1959 Record—Won 8, Lost 2

PAST SCORES:

1894—Oregon State, 16-0	1927—Oregon State, 21-7
1895—Oregon, 44-0	1928—Oregon, 12-0
1896—Oregon, 2-0	1929—Oregon, 16-0
1896—Oregon, 8-4	1930—Oregon State, 15-0
1897—Oregon State, 26-8	1931—Tie, 0-0
1898—Oregon, 38-0	1932—Oregon, 12-6
1899—Oregon, 38-0	1933—Oregon, 13-3
1902—Tie, 0-0	1934—Oregon, 9-6
1903—Oregon, 5-0	1935—Oregon, 13-0
1904—Oregon, 6-5	1936—Oregon State, 18-0
1905—Oregon, 6-0	1937—Oregon State, 14-0
1906—Tie, 0-0	1938—Oregon State, 14-0
1907—Oregon State, 4-0	1939—Oregon State, 19-14
1908—Oregon, 8-0	1940—Oregon, 20-0
1909—Oregon, 12-0	1941—Oregon State, 12-7
1910—Oregon, 12-0	1942—Oregon State, 39-2
1912—Oregon, 3-0	1945—Oregon State, 13-12
1913—Tie, 10-10	1945—Oregon State, 19-6
1914—Tie, 3-3	1946—Oregon State, 13-0
1915—Oregon, 9-0	1947—Oregon, 14-6
1916—Oregon, 27-0	1948—Oregon, 10-0
1917—Oregon State, 14-7	1949—Oregon State, 20-10
1918—Oregon, 13-6	1950—Oregon State, 14-2
1910—Oregon, 12-0	1951—Oregon State, 14-7
1920—Tie, 0-0	1952—Oregon State, 22-19
1921—Tie, 0-0	1953—Oregon State, 7-0
1922—Oregon, 10-0	1954—Oregon, 33-14
1923—Oregon State, 6-0	1955—Oregon, 28-0
1924—Oregon, 7-3	1956—Tie, 14-14
1925—Oregon State, 24-13	1957—Oregon State, 10-7
1926—Oregon State, 16-0	1958—Oregon, 20-0
	1959—Oregon State, 15-7

Total Games Won—Oregon 30, OSC 25, Ties 8

Total Points Scored—Oregon 603, OSC 487

All-Time OSC Football Scores 1893 to Present

1893

OSC 62	Albany college	0
OSC 36	Monmouth college	22
OSC 28	Monmouth college	0
OSC 6	Multnomah A.C. Jrs.	0
OSC 12	Portland U.	26

1894

OSC 16	Oregon	0
OSC 0	Portland U.	22
OSC 36	Monmouth college	6

1895

OSC 0	Forest Grove	0
OSC 6	Willamette	36
OSC 0	Oregon	44

1896

OSC 0	Oregon	2
OSC 8	Oregon	12

1897

OSC 26	Oregon	8
OSC 16	Washington	0

1898

OSC 25	Albany college	6
OSC 5	Forest Grove	5
OSC 6	Chemawa Indians	29
OSC 0	Oregon	38

1899

OSC 10	Willamette	0
OSC 47	Albany college	0
OSC 0	Multnomah A.C.	5
OSC 0	Oregon	38
OSC 18	Chemawa Indians	17

1900

No football—athletics prohibited by regents

1901

No varsity games—2nd team played only

1902

OSC 67	Willamette	0
OSC 6	Washington	16
OSC 0	Oregon	0
OSC 21	Willamette	0
OSC 33	McMinnville	0
OSC 31	Pacific	0

1903

OSC 0	Washington	5
OSC 0	Multnomah A.C.	16
OSC 0	Albany college	6
OSC 0	Pacific	0
OSC 6	Wash. State	0
OSC 0	Oregon	5
OSC 15	Nevada	0

1904

OSC 11	Alumni	0
OSC 22	Portland Medicos	0
OSC 26	Washington	5
OSC 45	Utah Aggies	0
OSC 5	Oregon	6
OSC 10	Multnomah A.C.	11

1905

OSC 10	Alumni	6
OSC 18	Chemawa	0
OSC 58	Whitman	0
OSC 29	Wash. State	0
OSC 0	California	10
OSC 0	Oregon	6
OSC 28	Willamette	0
OSC 18	Washington	0
OSC 5	Multnomah AC	6

1906

OSC 24	Albany A.C.	0
OSC 16	Alumni	0
OSC 0	Washington	0
OSC 28	Pacific	0
OSC 9	Columbia A.C.	0
OSC 0	Oregon	0
OSC 0	Willamette	4

1907

OSC 26	Astoria A.C.	0
OSC 6	Whitman	0
OSC 49	Pacific	0
OSC 4	Oregon	0
OSC 42	Willamette	0
OSC 10	St. Vincent college	0

1908

OSC 0	Alumni	0
OSC 26	Puget Sound	0
OSC 10	Columbia A.C.	0
OSC 28	Willamette	0
OSC 9	Whitman	0
OSC 0	Oregon	8
OSC 0	Washington	32
OSC 10	Multnomah A.C.	11

1909

OSC 0	Alumni	0
OSC 21	Pacific	0
OSC 12	Catholic YMCA	0
OSC 10	Whitman	6
OSC 0	Washington	21
OSC 0	Oregon	12
OSC 11	Multnomah A.C.	8

1910

OSC 0	Alumni	0
OSC 9	Willamette	6
OSC 9	Wash. State	3
OSC 9	Whitman	0
OSC 0	Oregon	12
OSC 0	Washington	22

1911

OSC 2 Alumni 3
 OSC 26 Pacific 0
 OSC 75 Chemawa Indians 6
 OSC 0 Washington 34
 OSC 6 Wash. State 0
 OSC 5 Willamette 3
 OSC 5 Whitman 3

1912

OSC 2 Alumni 0
 OSC 0 Multnomah A.C. 9
 OSC 9 Wash. State 10
 OSC 3 Washington 9
 OSC 20 Whitman 3
 OSC 0 Oregon 3
 OSC 23 Occidental 6

1913

OSC 0 Alumni 0
 OSC 0 Multnomah A.C. 6
 OSC 7 Multnomah A.C. 7
 OSC 29 Whitman 3
 OSC 0 Washington 47
 OSC 10 Oregon 10
 OSC 10 Wash. State 2
 OSC 3 Idaho 0

1914

OSC 12 Alumni 0
 OSC 12 Rooks 0
 OSC 10 Multnomah A.C. 6
 OSC 64 Willamette 0
 OSC 7 Wash. State 0
 OSC 0 Washington 0
 OSC 26 Idaho 0
 OSC 3 Oregon 3
 OSC 38 Southern Cal 6

1915**Beginning of
Pacific Coast Conference**

OSC 3 Alumni 0
 OSC 69 Willamette 0
 OSC 34 Whitman 7
 OSC 0 Wash. State 29
 OSC 20 Michigan Aggies 0
 OSC 40 Idaho 0
 OSC 0 Oregon 9
 OSC 0 Syracuse 28

1916

OSC 7 Alumni 13
 OSC 0 Multnomah A.C. 3
 OSC 26 Idaho 0
 OSC 13 Wash. State 10
 OSC 7 Nebraska 17
 OSC 23 Whitman 0
 OSC 0 Washington 35
 OSC 0 Oregon 27
 OSC 16 Southern Cal 7

1917

OSC 34 Field Hospital Corps of
 Vancouver Barracks 0
 OSC 26 Idaho 6
 OSC 3 California 14
 OSC 6 Multnomah A.C. 0
 OSC 0 Wash. State 6
 OSC 0 Washington 0
 OSC 14 Oregon 7

1918

OSC 7 Vancouver Barracks 0
 OSC 6 Camp Lewis 21
 OSC 14 Standifer
 Shipbuilders 0
 OSC 6 Oregon 13
 OSC 0 Washington 6
 OSC 0 Multnomah A.C. 6

1919

OSC 0 Alumni 0
 OSC 21 Rooks 0
 OSC 46 Pacific 6
 OSC 6 Stanford 14
 OSC 14 Canifonia 21
 OSC 0 Multnomah A.C. 14
 OSC 0 Oregon 9
 OSC 6 Wash. State 0
 OSC 50 Gonzaga 0

1920

OSC 0 Multnomah A.C. 0
 OSC 3 Washington 0
 OSC 7 California 17
 OSC 0 Wash. State 28
 OSC 0 Oregon 0
 OSC 10 Multnomah A.C. 7

1921

OSC 68 Rooks 7
 OSC 68 Chemawa Indians 0
 OSC 7 Multnomah A.C. 7
 OSC 54 Willamette 0
 OSC 24 Washington 0
 OSC 7 Stanford 14
 OSC 3 Wash. State 7
 OSC 0 Oregon 0
 OSC 0 Southern Cal 7

1922

OSC 22 Alumni 6
 OSC 3 Pacific 0
 OSC 3 Washington 14
 OSC 0 Stanford 6
 OSC 0 Multnomah A.C. 6
 OSC 0 Oregon 10
 OSC 16 Wash. State 0

1923

OSC 12 Pacific 0
 OSC 0 Multnomah A.C. 0
 OSC 13 Alumni 0

OSC 0 California 26
OSC 0 Washington 14
OSC 0 Idaho 7
OSC 3 Wash. State 3
OSC 6 Oregon 0
OSC 12 Multnomah A.C. 0
OSC 9 Hawaiian All-Stars 14
OSC 0 U. of Hawaii 7

1924

OSC 41 Whitman 0
OSC 7 Multnomah A.C. 6
OSC 3 Southern Cal 17
OSC 3 Washington 6
OSC 0 Idaho 22
OSC 14 Wash. State 13
OSC 3 Oregon 7
OSC 0 Nebraska 14

1925

OSC 51 Willamette 0
OSC 22 Gonzaga 0
OSC 62 Whitman 0
OSC 10 Stanford 26
OSC 27 Montana 7
OSC 56 Pacific 0
OSC 24 Oregon 13
OSC 16 Idaho 7
OSC 0 Southern Cal 28

1926

OSC 67 Multnomah A.C. 0
OSC 49 Montana 0
OSC 23 Gonzaga 6
OSC 27 California 7
OSC 3 Idaho 0
OSC 7 Southern Cal 17
OSC 16 Oregon 0
OSC 29 Marquette 0

1927

OSC 25 California Aggies 6
OSC 12 Southern Cal 13
OSC 6 Stanford 20
OSC 13 Wash. State 6
OSC 21 Oregon 7
OSC 7 Idaho 12
OSC 14 Carnegie Tech 14

1928

OSC 14 California Aggies 0
OSC 0 Southern Cal 19
OSC 41 Columbia U. 0
OSC 46 Pacific 0
OSC 7 Wash. State 9
OSC 29 Washington 0
OSC 44 Montana 0
OSC 0 Oregon 12
OSC 25 New York Univ. 13

1929

OSC 37 Willamette 6

OSC 19 California Aggies 0
OSC 7 Southern Cal 21
OSC 71 Columbia U. 7
OSC 7 Stanford 40
OSC 27 Idaho 0
OSC 0 Wash. State 9
OSC 0 Oregon 16
OSC 14 Detroit U. 7

1930

OSC 48 Willamette 0
OSC 16 Gonzaga 6
OSC 7 Southern Cal 27
OSC 20 California Aggies 0
OSC 7 Stanford 13
OSC 57 Pacific 0
OSC 7 Wash. State 14
OSC 15 Oregon 0
OSC 19 UCLA 0
OSC 12 West Virginia 0

1931

OSC 76 Willamette 0
OSC 16 Colorado 0
OSC 0 Southern Cal 30
OSC 25 Linfield 0
OSC 7 Stanford 25
OSC 37 Oregon Normal 0
OSC 6 Wash. State 7
OSC 19 Montana 0
OSC 0 Oregon 0
OSC 12 Utah 0

1932

OSC 19 Gonzaga 16
OSC 32 Willamette 0
OSC 0 Stanford 27
OSC 0 Southern Cal 10
OSC 6 Wash. State 7
OSC 20 West Coast Army 9
OSC 6 Oregon 12
OSC 35 Montana 6
OSC 6 Fordham 8
OSC 6 Detroit U. 14

1933

OSC 21 Ashland Normal 0
OSC 21 Willamette 0
OSC 20 Montana 0
OSC 0 Gonzaga 0
OSC 12 San Francisco U. 7
OSC 0 Southern Cal 0
OSC 2 Wash. State 0
OSC 3 Oregon 13
OSC 9 Fordham 6
OSC 0 Nebraska 22

1934

OSC 13 Willamette 0
OSC 19 Pacific 0
OSC 0 San Francisco U. 10
OSC 0 Stanford 17

OSC 39 Columbia U. 12
OSC 6 Southern Cal 6
OSC 0 Wash. State 31
OSC 7 Washington 14
OSC 6 Oregon 9
OSC 7 Montana 7
OSC 7 UCLA 25

1935

OSC 31 Linfield 0
OSC 26 Willamette 0
OSC 7 UCLA 20
OSC 13 Southern Cal 7
OSC 33 Gonzaga 6
OSC 13 Wash. State 26
OSC 19 Portland U. 2
OSC 0 Oregon 13
OSC 13 Idaho 0
OSC 0 Montana 0
OSC 20 Nebraska 26

1936

OSC 7 Southern Cal 38
OSC 13 Willamette 0
OSC 0 California 7
OSC 7 Washington 19
OSC 13 UCLA 22
OSC 14 Montana 7
OSC 16 Wash. State 6
OSC 14 Stanford 20
OSC 18 Oregon 0
OSC 14 Nebraska 32

1937

OSC 6 Idaho 7
OSC 6 California 24
OSC 6 Washington 3
OSC 7 UCLA 7
OSC 14 Oregon 0
OSC 0 Stanford 0
OSC 20 Willamette 0
OSC 12 Southern Cal 12
OSC 0 Wash. State 7

1938

OSC 0 Idaho 13
OSC 0 USC 7
OSC 19 Portland U. 0
OSC 13 Washington 6
OSC 7 Wash. State 6
OSC 7 California 13
OSC 6 Stanford 0
OSC 14 Oregon 0
OSC 6 UCLA 6

1939

OSC 12 Stanford 0
OSC 7 Idaho 6
OSC 14 Portland U. 12
OSC 13 Washington 7
OSC 13 Wash. State 0
OSC 7 USC 19

OSC 19 Oregon 14
OSC 21 California 0
OSC 13 UCLA 13
OSC 28 Hawaiian All-Stars 0
OSC 39 U. of Hawaii 6

1940

OSC 41 Idaho 0
OSC 0 USC 0
OSC 26 Portland U. 0
OSC 0 Washington 19
OSC 7 UCLA 0
OSC 19 California 13
OSC 21 Wash. State 0
OSC 14 Stanford 28
OSC 0 Oregon 20

1941

OSC 7 USC 13
OSC 9 Washington 6
OSC 10 Stanford 0
OSC 0 Wash. State 7
OSC 33 Idaho 0
OSC 19 UCLA 0
OSC 6 California 0
OSC 27 Montana 0
OSC 12 Oregon 7
OSC 20 Duke 16
(Rose Bowl)

1942

OSC 32 Idaho 0
OSC 13 California 8
OSC 7 UCLA 30
OSC 0 Santa Clara 7
OSC 13 Wash. State 26
OSC 0 Washington 13
OSC 33 Montana 0
OSC 13 Stanford 49
OSC 39 Oregon 2
OSC 7 Michigan State 7

1945

OSC 14 Camp Beale 14
OSC 0 Wash. State 33
OSC 19 Oregon 6
OSC 0 Washington 13
OSC 34 Idaho 0
OSC 7 Washington 6
OSC 6 Wash. State 13
OSC 7 USC 34
OSC 13 Oregon 12

1946

OSC 7 UCLA 50
OSC 35 Portland U. 0
OSC 6 USC 0
OSC 13 Wash. State 12
OSC 0 Stanford 0

OSC 34 Idaho 0
OSC 28 California 7
OSC 13 Oregon 0
OSC 21 Washington 12

1947

OSC 6 Utah 7
OSC 14 Washington 7
OSC 33 Idaho 6
OSC 6 USC 48
OSC 46 Portland U. 0
OSC 13 Stanford 7
OSC 7 UCLA 27
OSC 13 Wash. State 14
OSC 6 Oregon 14
OSC 27 Nebraska 6

1948

OSC 27 Idaho 12
OSC 6 USC 21
OSC 14 Washington 14
OSC 32 Portland U. 6
OSC 0 California 42
OSC 28 UCLA 0
OSC 21 Michigan State 46
OSC 26 Wash. State 26
OSC 20 Utah 20
OSC 0 Oregon 10
OSC 28 Nebraska 13
OSC 47 U. of Hawaii 27
(Pineapple Bowl)

1949

OSC 13 UCLA 35
OSC 27 Utah 7
OSC 0 California 41
OSC 7 Washington 3
OSC 63 Montana 14
OSC 7 Stanford 27
OSC 35 Wash. State 6
OSC 35 Idaho 25
OSC 25 Michigan State 20
OSC 20 Oregon 10

1950

OSC 13 Michigan State 38
OSC 0 Stanford 21
OSC 6 Washington 35
OSC 0 California 27
OSC 20 Montana 0
OSC 13 UCLA 20
OSC 34 Idaho 19
OSC 7 Wash. State 21
OSC 14 Oregon 2

1951

OSC 0 Michigan State 6
OSC 61 Utah 28
OSC 34 Idaho 6
OSC 14 USC 16
OSC 13 Wash. State 26
OSC 14 California 35
OSC 40 Washington 14
OSC 0 UCLA 7
OSC 14 Stanford 35
OSC 14 Oregon 7

1952

OSC 14 Utah 7
OSC 14 Michigan State 17
OSC 28 Stanford 41
OSC 6 USC 28
OSC 20 Wash. State 33
OSC 13 Washington 38
OSC 0 UCLA 57
OSC 6 Idaho 27
OSC 22 Oregon 19

1953

OSC 0 UCLA 41
OSC 0 California 26
OSC 0 Washington 28
OSC 0 Stanford 21
OSC 0 USC 37
OSC 19 Idaho 0
OSC 6 Michigan State 34
OSC 7 Wash. State 0
OSC 7 Oregon 0

1954

OSC 13 Idaho 0
OSC 7 Washington 17
OSC 6 Wash. State 34
OSC 7 Nebraska 27
OSC 0 UCLA 61
OSC 0 USC 34
OSC 6 Minnesota 44
OSC 7 California 46
OSC 14 Oregon 33

1955

OSC 33 Brigham Young 0
OSC 10 Stanford 0
OSC 0 UCLA 38
OSC 7 Coll. of Pac. 13
OSC 14 Wash. State 6
OSC 13 Washington 7
OSC 33 Idaho 14
OSC 16 California 14
OSC 0 Oregon 28

1956

OSC 19 Missouri 13
 OSC 13 USC 21
 OSC 13 Iowa 14
 OSC 21 California 13
 OSC 21 WSC 0
 OSC 21 UCLA 7
 OSC 28 Washington 20
 OSC 20 Stanford 19
 OSC 14 Idaho 10
 OSC 14 Oregon 14
 OSC 19 Iowa 35
 (Rose Bowl)

1957

OSC 20 USC 0
 OSC 34 Kansas 6
 OSC 22 Northwestern 13
 OSC 20 Idaho 0
 OSC 7 UCLA 26
 OSC 6 Washington 19
 OSC 39 WSC 25
 OSC 21 California 19
 OSC 24 Stanford 14
 OSC 10 Oregon 7

1958

OSC 0 USC 21
 OSC 12 Kansas 0
 OSC 14 UCLA 0
 OSC 0 Wyoming 28
 OSC 20 Idaho 6
 OSC 14 Washington 12
 OSC 14 California 8
 OSC 0 WSC 7
 OSC 24 Stanford 16
 OSC 0 Oregon 20

1959

OSC 6 USC 27
 OSC 14 Texas Tech 15
 OSC 6 Nebraska 7
 OSC 7 Michigan 15
 OSC 66 Idaho 18
 OSC 24 California 20
 OSC 0 WSU 14
 OSC 6 Washington 13
 OSC 22 Stanford 39
 OSC 15 Oregon 7

OSC Basketball Schedule 1960-61

Dec. 2 New Mex. St. at Los Cruces.
 Dec. 3 Ariz. State at Tempe.
 Dec. 5 California at Santa Barbara.
 Dec. 10 Washington at Seattle.
 Dec. 16 Ariz. State at Corvallis.
 Dec. 17 Seattle U at Corvallis.
 Dec. 28-29-30 Far West Classic at Portland.

Opening round:

2 p.m. WSU vs. Seattle.
 4 p.m. Oregon vs. Arizona State.
 7:30 p.m. OSC vs. Wisconsin.
 9:30 p.m. Portland vs. Idaho.
 Jan. 7 U. of Portland at Corvallis.
 Jan. 13 Wash. State at Pullman.
 Jan. 14 Wash. State at Pullman.
 Jan. 20 Idaho at Corvallis.
 Jan. 21 Wash. State at Corvallis.
 Jan. 27 U. of Portland at Portland.
 Jan. 28 Washington at Corvallis.
 Feb. 3 Oregon at Corvallis.
 Feb. 4 Oregon at Eugene.
 Feb. 10 Wash. State at Corvallis.
 Feb. 11 Idaho at Corvallis.
 Feb. 17 Idaho at Moscow.
 Feb. 18 Idaho at Moscow.
 Feb. 24 Cal. at Corvallis.
 Feb. 25 Southern Cal. at Corvallis.
 Mar. 10 Oregon at Eugene.
 Mar. 11 Oregon at Corvallis.

