



OREGON STATE

VOLLEYBALL

2016 Media Supplement

UNIVERSITY INFORMATION

Location.....Corvallis, Ore.
 Founded.....1868
 Enrollment.....30,058
 Nickname.....Beavers
 Colors.....Orange and Black
 President.....Dr. Edward Ray
 VP/Director of Athletics.....Todd Stansbury
 Athletic Faculty Representative.....Dr. Joseph Spatafora
 SWA/Associate A.D.....Marianne Vydra
 Affiliation.....NCAA Division I
 Conference.....Pac-12
 Home Facility (Capacity).....Gill Coliseum (9,604)
 Ticket Office.....800-GO-BEAVS

HISTORY

First Year of Volleyball.....1976
 All-Time Record.....567-673-8, 458
 NCAA Appearances/Last.....3/2014

VOLLEYBALL STAFF

Head Coach:.....Mark Barnard
 Alma Mater:.....University of Sydney, 1991
 OSU Record:.....First Season
 Career Record:.....First Season
 Assistant Coach:.....Laura DeBruler (1st Season, Illinois '11)
 Assistant Coach:.....Ron Zwerver (1st Season, MEAO '86)
 Graduate Assistant:.....Lindsay McCabe (1st Season, Syracuse '15)
 Dir. of Operations:.. Jessica Quinn (2nd season, Memphis '00)
 Volleyball Office Phone:.....(541) 737-7490

2015 IN REVIEW

2014 Record.....6-24
 2015 Conference Record/Finish.....4-16/T-10th
 Postseason.....N/A
 Final AVCA Ranking.....None

2016

Starters Returning/Lost.....5/2
 Letterwinners Returning/Lost.....12/4
 Newcomers.....7

ATHLETIC COMMUNICATIONS

Assoc. AD/Communications..... Steve Fenk
 Office Phone.....(541) 737-3720
 Office Fax.....(541) 737-3072
 Assistant/Volleyball Contact.....Hank Hager
 Office Phone.....541-737-7472
 E-mail.....Hank.Hager@oregonstate.edu
 Website.....www.osubeavers.com
 Mailing Address.....215 Gill Coliseum
 Oregon State University
 Corvallis, OR 97331

@OregonStateVolleyball

OSUBeaversAthletics

@BeaverVBall

@BeaverVBall

2016 Oregon State Volleyball

2016 Oregon State Numerical Volleyball Roster

No.	Name	Pos.	Ht.	Yr.	Exp.	Hometown (Last School)
0	Seumalo, Jessi	MB	6-1	Sr.	1L	Corvallis, Ore. (College of Southern Idaho)
1	Wilmes, Emilie	OH	6-1	Sr.	2L	St. Paul, Ore. (Long Beach State)
2	Toner, Lila	OH	6-1	Sr.	3L	Istanbul, Turkey (Illbank Sports Club)
3	Taylor, Delaney	S	5-10	So.	HS	Berkeley, Calif. (Berkeley HS)
4	Bennett, Haylie	OH/RS	6-1	Fr.	HS	Philomath, Ore. (Philomath HS)
5	Hollingsworth, McKenna	S/OH	6-0	RSO.	1L	Carlsbad, Calif. (Tri-City Christian HS)
6	Stewart, Merritt	DS/L	5-6	Fr.	HS	Escalon, Calif. (Gregori HS)
7	Buehner, Rachel	DS/L	5-7	Sr.	3L	Bend, Ore. (Mountain View HS)
8	Gravley, Maddy	MB	6-3	RSO.	1L	Corvallis, Ore. (Santiam Christian HS)
9	Browne, Makenna	DS/L	5-5	Fr.	HS	Conifer, Colo. (Conifer HS)
11	Reagan, Lanasha	OH	5-10	RSO.	1L	Snohomish, Wash. (Snohomish HS)
12	Driscoll, Katelyn	OH	6-5	RSr.	3L	Littleton, Colo. (Heritage HS)
14	Cheshire, Kory	OH/MB	6-1	RSO.	1L	Lethbridge, Alberta, Canada (Chinook HS)
15	Marshall, Mary-Kate	OH	6-1	Jr.	2L	Coppell, Texas (Coppell HS)
17	Ifeanyi, Shalom	OH	6-1	Fr.	HS	Dallas, Texas (Plano HS)
20	Vargas, Daniela	MB	6-1	So.	1L	San Jose, Costa Rica (European HS)
21	Rouleau, Sam	S	5-6	Jr.	TR	Eugene, Ore. (Linn-Benton CC)
22	Ellis, Kayla	DS/L	5-8	So.	1L	Pocatello, Idaho (Century HS)
24	Bruin, Serena	MB	6-2	Fr.	HS	Commerce City, Colo. (Prairie View HS)

2016 Oregon State Alphabetical Volleyball Roster

No.	Name	Pos.	Ht.	Yr.	Exp.	Hometown (Last School)
4	Bennett, Haylie	OH/RS	6-1	Fr.	HS	Philomath, Ore. (Philomath HS)
9	Browne, Makenna	DS/L	5-5	Fr.	HS	Conifer, Colo. (Conifer HS)
24	Bruin, Serena	MB	6-2	Fr.	HS	Commerce City, Colo. (Prairie View HS)
7	Buehner, Rachel	DS/L	5-7	Sr.	3L	Bend, Ore. (Mountain View HS)
14	Cheshire, Kory	OH/MB	6-1	RSO.	1L	Lethbridge, Alberta, Canada (Chinook HS)
12	Driscoll, Katelyn	OH	6-5	RSr.	3L	Littleton, Colo. (Heritage HS)
22	Ellis, Kayla	DS/L	5-8	So.	1L	Pocatello, Idaho (Century HS)
8	Gravley, Maddy	MB	6-3	RSO.	1L	Corvallis, Ore. (Santiam Christian HS)
5	Hollingsworth, McKenna	S/OH	6-0	RSO.	1L	Carlsbad, Calif. (Tri-City Christian HS)
17	Ifeanyi, Shalom	OH	6-1	Fr.	HS	Dallas, Texas (Plano HS)
15	Marshall, Mary-Kate	OH	6-1	Jr.	2L	Coppell, Texas (Coppell HS)
11	Reagan, Lanasha	OH	5-10	RSO.	1L	Snohomish, Wash. (Snohomish HS)
21	Rouleau, Sam	S	5-6	Jr.	TR	Eugene, Ore. (Linn-Benton CC)
0	Seumalo, Jessi	MB	6-1	Sr.	1L	Corvallis, Ore. (College of Southern Idaho)
6	Stewart, Merritt	DS/L	5-6	Fr.	HS	Escalon, Calif. (Gregori HS)
3	Taylor, Delaney	S	5-10	So.	HS	Berkeley, Calif. (Berkeley HS)
2	Toner, Lila	OH	6-1	Sr.	3L	Istanbul, Turkey (Illbank Sports Club)
20	Vargas, Daniela	MB	6-1	So.	1L	San Jose, Costa Rica (European HS)
1	Wilmes, Emilie	OH	6-1	Sr.	2L	St. Paul, Ore. (Long Beach State)

Head Coach: Mark Barnard (1st Season / University of Sydney '91)

Assistant Coach: Laura DeBruler (1st Season / Illinois '11)

Assistant Coach: Ron Zwerver (1st Season / MEAO '86)

Graduate Student Assistant: Lindsay McCabe (1st Season / Syracuse '15)

Director of Operations: Jessica Quinn (2nd Season / Memphis '00)

Pronunciations

Shalom Ifeanyi	If-ee-on-e
Sam Rouleau	Roo-low
Emilie Wilmes	Will-mess
Ron Zwerver	Zwur-vur

2016 Oregon State Volleyball

2016 Oregon State Schedule

Day	Date	Opponent	Location	Time (PT)
Friday	August 19	Orange & Black Scrimmage	Corvallis, Ore.	7:00 p.m.
Friday	August 26	(1) Utah State	Corvallis, Ore.	10:00 a.m.
Friday	August 26	(1) Seattle vs. Portland	Corvallis, Ore.	12:30 p.m.
Friday	August 26	(1) Portland	Corvallis, Ore.	7:00 p.m.
Saturday	August 27	(1) Seattle vs. Utah State	Corvallis, Ore.	10:00 a.m.
Saturday	August 27	(1) Utah State vs. Portland	Corvallis, Ore.	4:00 p.m.
Saturday	August 27	(1) Seattle	Corvallis, Ore.	7:00 p.m.
Friday	September 2	vs. Syracuse	Lincoln, Neb.	1:30 p.m.
Saturday	September 3	at Nebraska	Lincoln, Neb.	12:30 p.m.
Friday	September 9	(2) vs. South Dakota	Stockton, Calif.	2:00 p.m.
Saturday	September 10	(2) vs. Northern Colorado	Stockton, Calif.	1:00 p.m.
Saturday	September 10	(2) at Pacific	Stockton, Calif.	7:00 p.m.
Thursday	September 15	(3) vs. Tennessee Tech	Moscow, Idaho	7:00 p.m.
Friday	September 16	(3) vs. Wyoming	Moscow, Idaho	10:00 a.m.
Friday	September 16	(3) at Idaho	Moscow, Idaho	7:00 p.m.
Thursday	September 22	at Oregon * (Pac-12 Network)	Eugene, Ore.	7:00 p.m.
Friday	September 23	Stanford * (Pac-12 Network)	Corvallis, Ore.	7:00 p.m.
Friday	September 30	at Arizona * (Pac-12 Network)	Tucson, Ariz.	8:00 p.m.
Sunday	October 2	at Arizona State * (Pac-12 Network)	Tempe, Ariz.	11:00 a.m.
Friday	October 7	Washington State * (Pac-12 Network)	Corvallis, Ore.	7:00 p.m.
Sunday	October 9	Washington * (Pac-12 Network)	Corvallis, Ore.	3:00 p.m.
Friday	October 14	UCLA * (Pac-12 Network)	Corvallis, Ore.	6:00 p.m.
Sunday	October 16	USC * (Pac-12 Network)	Corvallis, Ore.	12:00 p.m.
Friday	October 21	at Colorado * (Pac-12 Network)	Boulder, Colo.	5:00 p.m.
Saturday	October 22	at Utah *	Salt Lake City, Utah	6:00 p.m.
Friday	October 28	Arizona State *	Corvallis, Ore.	7:00 p.m.
Sunday	October 30	Arizona *	Corvallis, Ore.	12:00 p.m.
Friday	November 4	at Washington State *	Pullman, Wash.	7:00 p.m.
Sunday	November 6	at Washington *	Seattle, Wash.	3:00 p.m.
Thursday	November 10	Utah *	Corvallis, Ore.	7:00 p.m.
Saturday	November 12	Colorado	Corvallis, Ore.	7:00 p.m.
Wednesday	November 16	at USC * (Pac-12 Network)	Los Angeles, Calif.	TBA
Friday	November 18	at UCLA * (Pac-12 Network)	Los Angeles, Calif.	TBA
Wednesday	November 23	at California *	Berkeley, Calif.	3:00 p.m.
Friday	November 25	Oregon * (Pac-12 Network)	Corvallis, Ore.	TBA

* indicates Pac-12 match

(1) Ultra Ankle Challenge

(2) Pacific Tournament

(3) Idaho Tournament

Home matches in **Bold**



MARK BARNARD

Head Coach • 1st Year
1st Year Overall

University of Sydney, '91

Mark Barnard was named as Oregon State's head coach on June 27, 2016, after 11 seasons as an assistant coach and associate head coach with the Beavers.

Barnard, who has overseen the team's setters and offense during his tenure under former head coach Taras Liskevych, has mentored some of the top student-athletes in program history. Most recently, in 2014, Tayla Woods concluded her Oregon State career with 3,153 assists, which ranks fourth all-time. Woods was teammates for two seasons with Megan McBride, whose 2,605 career assists ranks seventh.

In 2014, the Beavers, under Liskevych and Barnard, advanced to their first ever Sweet 16, defeating UALR and Creighton en route. OSU was led offensively by Mary-Kate Marshall, who was named the Pac-12 Conference's Freshman of the Year.

A native of Sydney, Australia, Barnard helped mentor fellow Australian and All-American Rachel Rourke from 2006-09. She concluded her career with a program-best 1,920 kills. Rourke is the program's first and only back-to-back all-conference performer, doing so in 2008 and 2009.

Barnard oversaw the development of Camille Saxton, who finished her career in 2012 as one of the most prolific offensive players at Oregon State. She ended her career 11th in school history in kills and fifth in attacks. Saxton finished with 1,307 points, 12th all-time.

Barnard joined the Oregon State program on July 22, 2005 as an assistant coach under Liskevych. He was promoted to associate head coach in July 2008 after three seasons in Corvallis.

The past two offseasons, Barnard has been the head coach of the Australian Women's National Team. Nicknamed the "Volleyroos," the team entered 2014 ranked 100th in the world, and in one year under Barnard's tutelage, improved to 46th.

Barnard had International experience prior to his appointment as head coach. He was an assistant for the National Team from 1997-00, including the Sydney Olympics. During that time he also served as head coach of the women's national junior team (1999-2000) and women's national youth team (1997-99). In 2001, Barnard led the National Team of Australia to its first qualification to the World Championships in over 20 years. At its height, the Australian team was ranked No. 12 in the world.

Barnard, who broke into the profession at the high school level, coached at Westfields Sports High School from 1992-97. They won the National Championships in 1995-96 becoming the first school to ever achieve this honor. He also spent time coaching the National Junior Men's Team from 1994-97.

He was prolific as an athlete as well, playing on the 1984 Australian Junior Men's Team. He also competed on New South Wales Junior Teams from 1982 through 87, three times winning the National Championships and was an All-Australian 12 selection.

Barnard is a 1991 graduate of the University of Sydney with a degree in Education and Science. Mark and his wife, Louise, have two children, Isabella, and Alexander.

PLAYING EXPERIENCE

- 1982-87: New South Wales Junior Teams
- 1984: Australian Junior Men's Team

COACHING EXPERIENCE

- 1992-97: Westfields Sports High School
- 1994-97: Australia National Junior Men's Team
- 1997-99: Australia National Women's Youth Team
- 1999-00: Australia National Junior Women's Team
- 1997-05: Australia National Women's Team
- 2005-08: Oregon State Assistant Coach
- 2008-16: Oregon State Associate Head Coach
- 2016-present: Oregon State Head Coach





LAURA DeBRULER

Assistant Coach
1st Year
Illinois, '11

A former two-time All-American at the University of Illinois, Laura DeBruler joined the Oregon State volleyball staff as an assistant coach on March 3, 2016, with over eight years of playing, coaching and management experience at the collegiate, club and professional levels.

Most recently, DeBruler served as an assistant coach at Bowling Green. Among other responsibilities, DeBruler served as the Falcons' recruiting coordinator, and had held the position since February 2015. In her stint at BGSU, DeBruler coached a pair of All-MAC Honorable Mentions, and helped coach the Falcons to their first win over an ACC opponent since 2001 with a win over Notre Dame.

Prior to her stint at Bowling Green, DeBruler served as a top assistant coach at Western Illinois for just over two years. In 2013, DeBruler helped guide WIU back to the Summit League conference tournament for the first time since 2007, while also organizing recruiting efforts.

DeBruler earned her first collegiate coaching opportunity in January 2012, when she began a stint as a volunteer assistant coach at her alma mater, Illinois, which lasted just over a year. While at Illinois, she gained experience in scouting, analysis and recruiting, while aiding in the development of pin players and primary passers.

Outside of collegiate coaching, DeBruler also gained experience as the assistant coach and head coach of the Prime Time volleyball club team. She is certified by the Women's Coaches Academy, and gained professional playing experience as a member of the NUC volleyball club in Switzerland during the 2011 season.

As an outside hitter at the University of Illinois, DeBruler was named a First-Team All-American in 2009 and was tabbed a Second-Team All-American in 2008. She was a three-time All-Big Ten selection, and finished her career with the second-highest kills total (1,833) all-time at Illinois.

A native of Downers Grove, Ill., DeBruler graduated from the University of Illinois with a degree in psychology.



RON ZWERVER

Assistant Coach
1st Year
MEAO, '86

Two-time Olympic medalist Ron Zwerver is in his first season as an assistant coach with the Oregon State volleyball program, having been appointed to the position by head coach Mark Barnard on August 19, 2016.

Zwerver, who is considered one of the best volleyball players in Dutch history, was a gold medalist at the 1996 Summer Olympic Games in Atlanta. He had previously won a silver medal with The Netherlands at the 1992 Barcelona Olympics.

He's a three-time Olympian as The Netherlands finished in fifth at the 1998 Olympics in Seoul.

Zwerver spent the last 10 years as an assistant coach and head coach Internationally. In 2015, he was an assistant coach with the Dutch Men's National Team for the European Championships in Bulgaria. It was his second stint with the club as he served as an assistant coach for the team from 2006-07.

In 2014, he was an assistant coach for the Women's National Team and its trip to the World Championships in Italy. In 2012, he served as an assistant for the same club at the Olympic Qualification Tournament.

From 2009-14, he was the head coach of The Netherlands Boys Team (ages 15-20), which was preceded from 2009-10 as his role of head coach HVA.

Zwever served as head coach of Ortec Nesselande, a Dutch club that was national champions, in 2007.

After playing in 463 matches for the Dutch National Team, as well as six seasons in Italy and one in Belgium, he retired in 1999. He was named the Best Attacker in two World Championships – 1990 and 1994 – as well as the World League in 1990 and 1991. Zwerver was also named the Best Server at the Olympics in 1992, the World League in 1991, the European Championships in 1993.

To cap off his career highlights, he was named the MVP of the 1992 Olympic Games.



JESSICA QUINN

Director Of Operations
2nd Year
Memphis, '00

Jessica Quinn was hired as director of operations at Oregon State in August 2015 and enters her second year with over 15 years of coaching and operations experience.

Most recently, she served as a coordinator of Oregon State's Sports and Special Programs, supervising operations for 40 collegiate sports clubs.

She served in that role from 2011-15, coordinating travel, event planning, fiscal planning and budget management, among other operations responsibilities. Additionally, she served as the coordinator of marketing and student development in her final year.

Prior to that position, Quinn served as the director of girls' volleyball for the Clovis North Area & Bronco Elite Volleyball Club from 2007-11. Among her other duties included in this role, Quinn served as a head coach.

From 1998-2012, Quinn gained coaching experience with various college and club teams, including a one-year stint with OSU volleyball as a volunteer in 2011. Other college roles include service as an assistant coach at Rhodes College (2000), as well as a volunteer assistant role at UC-Davis (2004).

Quinn played volleyball all four years of college, starting at Reedley College from 1995-97. Quinn captained the team to a pair of Central Valley Conference Championships and fourth and sixth place finishes in the California State Championships.

Following her time at Reedley, Quinn also served as a team captain at the University of Memphis (1997-99), where she finished among the program's top-five career assist leaders (2,681) in only two seasons, while also posting two of the top-five single-game assist totals in school history (75 and 74, respectively).

Quinn graduated cum laude from the University of Memphis in 2000 as a criminal justice major and political science minor.



LINDSAY McCABE

Graduate Student Assistant
1st Year
Syracuse, '15

Lindsay McCabe, one of the top players in Syracuse history, was appointed as a graduate student assistant at Oregon State by head coach Mark Barnard prior to the 2016 season.

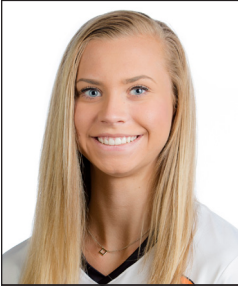
McCabe joins the staff after spending the 2015-16 season competing for Béziers Volley, a professional club located in the city of Béziers in Southwestern France.

McCabe played at Syracuse from 2010-14, appearing in 130 matches and serving as the team's captain for three seasons. She's the school's career record holder with 508 block assists and is second with 590 total blocks. McCabe also tallied 841 kills and 10 service aces during her career in New York.

She also starred academically at Syracuse, earning Capital One Academic All-District I honors in both 2013 and 2014.

A native of Georgetown, Ontario, she was a member of Team Canada's B Team in 2015.

2016 Oregon State Volleyball



Haylie Bennett #4 OH/RS

Freshman • 6'1" • HS
Philomath, Ore.
Philomath
Kinesiology

Philomath High School

- Three-year letterwinner for head coaches Alan Brown and Joyce Stringer.
- Earned all-league honors three times, first as an honorable mention selection her sophomore year. Named the Player of the Year in 2015.
- Team captain her junior and senior seasons.
- Earned MVP and USA Volleyball High Performance Continental Team honors her senior year.
- Also lettered in basketball one season.

Personal

- Born May 5, 1998 in Albany, Ore.
- Daughter of Helen and Don Bennett. Mother, Helen, played volleyball at Oregon State from 1987-1990.
- Has one younger brother, Chase.
- Majoring in kinesiology.
- Member of Honor Roll and the National Honors Society in high school.
- Aspires to be a Physician's Assistant after college.
- Favorite TV show is Grey's Anatomy and favorite movie is 13 Going On 30.
- Chose Oregon State because "it's close to home and I wanted to play at the Pac-12 level."



Makenna Browne #9 DS/L

Freshman • 5'5" • HS
Conifer, Colo.
Conifer
Biology

Conifer High School

- Three-year letterwinner for head coach Cindy Tadlock.
- Started three years at libero.
- Named all-conference three consecutive seasons.
- Served as team captain for two years and earned the Conifer MVP award.
- Finished first in the league in digs.
- Named to the Prep Volleyball Drew Team in her Spokane Club tournament.
- Lettered two years in track.

Personal

- Born Sept. 1, 1998 in Wheat Ridge, Colo.
- Daughter of Calisse and Steve Browne.
- Has two sisters, Jessica and Kristin, and one brother, Eric.
- Majoring in Biology.
- Aspires to be a neurologist after college.
- Enjoys hiking, painting, photography, hammocking and community service in her spare time.
- Was on highest Honor Roll while at Conifer High School. Also named

Academic All-State.

- Favorite athlete is Natalie Hagglund.
- Chose Oregon State because "I took a tour of the campus and immediately knew it was my dream school. Everything felt right. I then proceeded to talk to the volleyball coaching staff and was inspired. They made me believe that with enough hard work playing at such a high level as possible."



Serena Bruin #24 MB

Freshman • 6'2" • HS
Commerce City, Colo.
Prairie View
Kinesiology

Prairie View High School

- Four-year letterwinner for head coach Amy Shoemaker.
- Named First-Team All-Conference in 2014 and 2015 and second team in 2013 as a sophomore.
- Named the Conference Player of the Year as a senior.
- Served as the team's captain her sophomore, junior and senior seasons (2013-15).
- Lettered in basketball as a senior.

Personal

- Born Feb. 24, 1998 in Fort Hood, Texas.
- Daughter of Belinda and Hodji Bruin.
- Has one sibling, Liyah.
- Majoring in kinesiology.
- Hobbies include sketching portraits and scenery and using coloring books.
- Was on the National Honor Society while at Prairie View High School.
- Has a bagel with strawberry creame cheese for breakfast on every gameday.
- Chose Oregon State because "I love the atmosphere at OSU. The people have warm personalities and the weather is perfect for me all year round. Oregon State also competes in the Pac-12 which is one of the best conferences for collegiate sports."



Rachel Buehner #7 DS/L

Senior • 5'7" • 3L
Bend, Ore.
Mountain View
Kinesiology

Junior (2015)

- Appeared in 19 matches, starting one, and played in 49 seats.
- Tallied seven service assists and 40 digs.
- Had seven digs and a pair of aces at Colorado (Oct. 30).
- Registered her first ace of the season at No. 23 San Diego (Sept. 4) and added six digs.

2014 (Sophomore)

- Appeared in 118 sets, starting four matches and appearing in all 34.
- Had 224 digs, fourth highest total on the team ... Finished with 19 service aces, fourth on the team.

2016 Oregon State Volleyball

- Had a career-high 23 digs at Arizona Nov. 16.
- Had 10+ digs in four matches.
- Had 10 aces over the span of three matches, with 3 against Stanford and Cal Oct. 31 and Nov. 2 and a career-high 4 aces Nov. 6 at Washington State.

2013 (Freshman)

- Played in 23 matches, appearing in 58 sets.
- Recorded four assists, two service aces and 33 digs.
- Totaled a season-best five digs against Prairie View A&M (Sept. 20) while also finishing with an ace.
- Had two assists against Washington (Nov. 27).

Mountain View High School

- Lettered four years for head coaches Jill McKae and Mallory Larranaga.
- Started three years as the team's libero.
- Missed senior season due to injury.
- As a junior, was named first-team all-conference and was second team all-state at the 5A level.
- Served as team captain as a junior.
- Named first-team all-conference as a sophomore and was also second-team state.

Personal

- Born Jan. 30, 1995.
- Daughter of Angela and Kyle Buehner.
- Has one older sister, Alex, and one younger brother, Jake.
- Majoring in kinesiology.
- Enjoys hiking, wakeboarding, snowmobiling and spending time with friends.
- Served on student government for two years during high school.
- Favorite movie is Remember The Titans.
- Chose Oregon State because "I love the coaching staff, the team and that it is based in a college town."

#7 | Rachel Buehner

Career (Last)	Category	2015 (Last)
1 (Stanford, 12/12/14)	Kills	-
1-8x	Attacks	-
3-4x	Assists	2 (UC Irvine, 9/18)
4 (Washington State 11/6/14)	Aces	2 (Colorado, 10/30)
23 (Arizona, 11/16/14)	Digs	7 (Colorado, 10/30)
	Blocks	-
	Blocks Solo	-



Kory Cheshire #14 OH

Redshirt Sophomore • 6'1" • 1L
Lethbridge, Alberta, Canada
Chinook
Psychology

Redshirt Freshman (2015)

- Appeared in 18 matches, starting 11, and played in 53 sets.
- Finished with 42 kills, 11 service assists and 74 digs with nine service aces.
- Blocked a season-high seven shots at California (Oct. 11).
- Posted a season-high seven kills against No. 9 BYU (Sept. 12) and UC-Irvine (Sept. 18)
- Recorded a season-high 12 digs vs. No. 18 Oregon (Sept. 24).

2014 (Freshman)

- Redshirted.

Chinook High School

- Lettered four years for head coaches Jamie Bach and Devon Mulder.
- Led team to two 4A Provincial Championships during her tenure.
- Named league most valuable player twice ... Was a national All-Star.
- Two Provincial All-Star honors.
- Best of West MVP.
- Team Alberta captain.
- Also lettered as a guard in basketball for four years.

Personal

- Born Jan. 4, 1996.
- Daughter of Jeanette and Philip Cheshire.
- Has one older sister, Kelly, and one younger sister, Samantha.
- Majoring in psychology.
- Enjoys reading in her spare time.
- Favorite athlete is LeBron James.
- Favorite TV show is Criminal Minds.
- Chose Oregon State because "it felt like a good fit for me. I liked the coaches and the girls shared the same passion I had."

#14 | Kory Cheshire

Category	Career (Last)
Kills	7-2x (UC Irvine, 9/18/15)
Attacks	25 (UC Irvine, 9/18/15)
Assists	4 (Arizona State, 9/27/15)
Aces	2-3x (Washington 10/14/15)
Digs	12 (Oregon, 9/24/15)
Blocks	7 (California, 10/11/15)
Blocks Solo	1-4x



Katelyn Driscoll #12 OH

Redshirt Senior • 6'3" • 3L
Littleton, Colo.
Heritage
Speech Communication

Redshirt Junior (2015)

- Appeared in all 30 matches, starting 21, and played in 107 sets.
- Ranked second on OSU in kills (278) and points (309.5).
- Set a career-high with 24 kills in the four-set win over Arizona (Nov. 25). Hit .345 in the match.
- Had 18 kills vs. No. 18 UCLA (Oct. 25).
- Tallied 14 kills with a .333 hitting percentage (14-5-27) in the win over Idaho (Aug. 29).
- Matched her previous season high with 14 kills vs. then-No. 18 Oregon (Sept. 24).
- Posted 10 kills on Sept. 4 at No. 23 San Diego (.250) and on Sept. 5 vs. Pacific (.296).

2014 (Redshirt Sophomore)

- Appeared in all 34 matches, starting 9, totaling 125 sets.
- Second on the team with 282 kills.
- Had career-high 20 kills Nov. 16 at Arizona.
- Had 10+ kills in 10 matches.
- Had 74 blocks on the year, including a career-high six at CSU Bakersfield Sept. 20.

2013 (Sophomore)

- Did not play.

2016 Oregon State Volleyball

2012 (Freshman)

- Played in 12 matches, starting one, and appeared in 29 sets.
- Missed most of conference play due to injury.
- Finished with 39 kills, seven digs and 13 blocks.
- Posted a season-best nine kills with three blocks in a four-set win over Colorado (Sept. 28), her lone start of the season.
- Finished with eight kills and two digs against UCLA (Sept. 21).
- Totaled three straight three-kill efforts (Sept. 15 vs. San Diego State, Sept. 15 vs. Cal State Fullerton, Sept. 19 vs. Oregon).
- Totaled four blocks against the Titans.
- Posted three kills each against DePaul (Sept. 9) and Sept. 1 vs. Illinois State.

Heritage High School

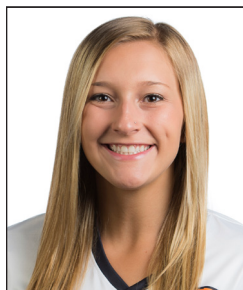
- Lettered four years for head coach Doug Schaffer.
- Served as team captain for two years and was also team MVP for two years.
- Named honorable mention all-state one year.
- Earned all-league honors all four years.
- Named a PrepVolleyball Senior Ace.

Personal

- Born Aug. 3, 1994.
- Daughter of Brenda and Patrick Driscoll.
- Has two younger sisters, Lauren and Haley.
- Majoring in Speech Communications.
- Favorite TV show is House Hunters and favorite movie is the Blind Side.
- Would most like to see the Olympic Games.
- Would be a swimmer if not playing volleyball.
- Chose Oregon State because she wanted to move out of state but still have an in-state feel.

#12 | Katelyn Driscoll

Career (Last)	Category	2015 (Last)
24 (Arizona, 11/25/15)	Kills	24 (Arizona, 11/25)
63 (Arizona, 11/16/14)	Attacks	56 (UCLA, 10/25)
1-7x	Assists	1-2x
1-3x	Aces	1 (Hawaii, 8/30)
7 (USC, 10/23/15)	Digs	7 (USC, 10/23)
6 (Bakersfield, 9/20/14)	Blocks	4 (UCLA, 10/25)
3 (UCLA, 10/19/14)	Blocks Solo	2-3x (Utah, 11/1)



#22 DS/L

Sophomore • 5'8" • 1L
Pocatellio, Idaho
Century
Kinesiology

Freshman (2015)

- Appeared in all 30 matches, starting one, and played in 107 of the team's 108 sets.
- Led the team in digs (365). Finished with one kill, 62 assists and 12 service aces. Ended the season tied for fourth in aces.
- Posted 21 digs in the four-set win over Arizona (Nov. 25).
- Ended the season with three consecutive matches of double-figure digs. Had a stretch of seven straight matches with at least 10 from Oct. 16 through Nov. 8.
- Had a season-high 26 digs vs. No. 10 UCLA (Oct. 25), and matched her season high at Colorado (Oct. 30).

Century High School

- Lettered four years as an outside hitter for head coach Pauline Thiros.

- Helped the team to four state championships and four district titles while starting every season.
- Two-time Idaho Gatorade Player of the Year.
- Was named all-state four times and was team captain three times.
- Named to the Idaho State Journal team three times.
- Named an Under Armour All-American.
- Prep Volleyball Freshman 59 and Sophomore 79.

Personal

- Born April 3, 1997.
- Daughter of Tawna Ellis and has one sister, Jenna.
- Mother played volleyball at the College of Southern Idaho and then UTSA. Sister played at Idaho.
- Majoring in kinesiology.
- Graduated from high school with the highest honors and academic excellence.
- Enjoys golfing, basketball and scrapbooking in her spare time.
- Favorite athlete is April Ross.
- Favorite TV show is One Tree Hill and favorite movie is Anchorman.
- Chose Oregon State because "I love the volleyball coaches. I love the environment and the academics are great."

#22 | Kayla Ellis

Category	Career (Last)
Kills	1 (Pacific, 9/5/15)
Attacks	5 (Colorado, 10/30/15)
Assists	7 (Washington State, 11/20/15)
Aces	2 (Colorado, 10/4/15)
Digs	26-2x (Colorado, 10/30/15)
Blocks	-
Blocks Solo	-



#8 MB

Redshirt Sophomore • 6'3" • 1L
Corvallis, Ore.
Santiam Christian
Biology

Redshirt Freshman (2015)

- Played in 14 matches, appearing in 18 sets.
- Tallied two kills along with three digs and three assisted blocks.
- Made her first collegiate start at San Diego State (Sept. 5).
- Posted a kill and a pair of blocks at No. 23 San Diego (Sept. 4).

2014 (Freshman)

- Redshirted

Santiam Christian

- Lettered four years for Santiam Christian under head coach Kim McLain.
- Started three years at middle blocker.
- Won three state championships at the 3A level.
- Won four Pac West Conference championships.
- Named first team all-conference during 2012 and 2013 seasons.
- Named first team all-state in 2013.

Personal

- Born June 1, 1996.
- Daughter of Rod and Cindy Gravley.
- Has one sister, Heather.
- Majoring in Biology.
- Cousins Brennan and Garret Sim both played for Oregon State, Brennan lettered four years on the football team and Garrett lettered four

2016 Oregon State Volleyball

years with the men's basketball team.

- Majoring in engineering.
- Hobbies include boating, skiing, traveling, and scuba diving.
- Chose Oregon State because "it's home, I've always been a fan and now I want to be a part of it. Also the coaches and the team are great."

#8 | Maddy Gravley

Category	Career (Last)
Kills	1-2x (UCLA, 11/15/15)
Attacks	2 (Arizona State, 9/27/15)
Assists	-
Aces	-
Digs	2 (Oregon, 11/27/15)
Blocks	2 (San Diego, 9/4/15)
Blocks Solo	-



McKenna #5 Hollingsworth OH/S

Redshirt Sophomore • 6'0" • 1L
Carlsbad, Calif.
Tri-City Christian
Accounting

Redshirt Freshman (2015)

- Appeared in 23 matches and 61 sets at setter, making 15 starts.
- Ranked 10th in the Pac-12 in assists per set (6.61) in 2016, finishing the season with 403 total.
- In her second career start, tallied 46 assists and 16 digs in a win over Utah (Oct. 2).
- Finished with 13 digs against Washington State (Nov. 20) and 10 against Oregon (Nov. 27).

2014 (Freshman)

- Redshirted.

Tri-City Christian High School

- San Diego County all-time leader in kills.
- 2013 All-America honorable mention.
- Garnered first-team all-section and all-league awards during her tenure.
- Tri-City Christian's Most Valuable Player each of her last three years and was a bronze medalist (2013) and gold medalist at Junior Nationals with the Coast Volleyball Club.

Personal

- Born Dec. 9, 1995.
- Daughter of Val and Brad Hollingsworth.
- Has one younger sister, Taylor.
- Majoring in accounting.
- Enjoys serving at her church and C3 San Diego in her spare time.
- Member of National Honor Society, California Scholarship Federation and Honor Roll in high school.
- Favorite TV shows are Pretty Little Liars and Master Chief.
- Favorite movie is Tangled.

#5 | McKenna Hollingsworth

Category	Career (Last)
Kills	3 (Utah, 10/2/15)
Attacks	6 (Utah, 10/2/15)
Assists	46 (Utah, 10/2/15)
Aces	2-4x (Arizona, 11/25/15)
Digs	16 (Utah, 10/2/15)
Blocks	4 (Utah, 10/2/15)
Blocks Solo	1 (Washington, 10/14/15)



Shalom #17 Ifeanyi OH

Freshman • 6'1" • HS
Dallas, Texas
Plano
Biology

Plano High School

- In 2014, she was an all-conference selection.
- Ifeanyichukwu also has experience in sand volleyball, participating in the USA Volleyball A1 Holiday Camp.
- A silver medalist with USA, she was named to the 2015 European Global Challenge All-Tournament team.

Bishop Lynch High School

- Helped Plano to back-to-back state championships from 2012-13, earning Newcomer of the Year honors in 2012 and an all-state selection in 2013.

Personal

- Born June 20, 1998 in Tampa, Fla.
- Daughter of Amber and Isreal Ifeanyichukwu.
- Father played football at USC from 1994-96, winning a Rose Bowl with the Trojans. Was a second-round NFL Draft selection by the San Francisco 49ers in 1996.
- Has three sisters, Areli, Mya and Aamirah.
- Majoring in Biology.
- Aspires to be an Orthopedic Surgeon after college.
- Enjoys art - drawing, painting - photography and tennis in her spare time.
- Chose Oregon State "I loved the campus and the coaching staff when I visited."



Mary-Kate #15 Marshall OH

Junior • 6'1" • 2L
Coppell, Texas
Coppell
Kinesiology

Sophomore (2015)

- Appeared in all 30 matches, starting each, and one of just two players to play in all 108 sets.
- Led OSU in kills (407), points (455.5), aces (22) and double-doubles (7), and was second in digs (226) and fourth in blocks (45).
- Had a career-high 30 kills vs. Utah (Oct. 2), the most by any player in the Pac-12 in 2015 and the most by an OSU player since Rachel Rourke had 31 vs. Arizona on Nov. 7, 2009.
- Posted double figures in kills in 22 of the team's 30 matches.
- Recorded at least 10 points in 24 of 30 matches.
- Led OSU in kills in 20 of 30 matches.
- Finished with 10 or more digs in eight matches, including a season-high 14 five times, most recently in the regular season finale against Oregon (Nov. 27).

2014 (Freshman)

- Started all but one match, with 33, appeared in 128 sets.

2016 Oregon State Volleyball

- Pac-12 Freshman of the Year, AVCA Region Freshman of the Year and All-Conference.
- 5-time Pac-12 Freshman of the Week.
- Had 540 kills, a 4.22 per set rate and the fourth highest season total in OSU history.
- Second on the team with 30 service aces.
- Third on the team with 306 digs.
- Had 10+ kills in 32 of 33 matches, with the one time she did not reach the mark being a runaway victory over Fresno State that starters were pulled early.
- Had 20+ kills in 10 matches with the team having an 9-1 record in those contests.
- Broke OSU Freshman kills record Nov. 13 at ASU, passing former All-American Rachel Rourke.
- Had 15 double-doubles, including a season high 17 digs at Washington State Nov. 6.
- Just missed triple double in win over Long Beach State, with 20 kills, 8 digs and 8 blocks.
- Had season-high 28 kills and 33 points in 5-set win at Arizona State Nov. 13.
- Hit .471 against Idaho State, with 18 kills and only 2 errors in 34 swings.
- Lead team with 14 kills in first program NCAA tournament win against Creighton.
- Had 23 kills in NCAA round 2 win against UALR,

Coppell High School

- Two-year letterwinner for head coach Julie Green.
- Led team to a 47-3 record in 2012 and 42-4 mark in 2013.
- Named to 2013 Under Armour All-America Second Team and MaxPreps All-America Second Team.
- Texas Sportswriters Association 5A First-Team All-State as a senior.
- Also named Academic All-State 5A in 2013.
- LoneStar Volleyball Player of the Week August 27, 2013.
- Dallas Morning News First-Team All-Area as a senior.
- Named to PrepVolleyball Class of 2014 Top 85 Juniors in 2012.
- Named 7-5A All-District and Academic All-District as a junior.

Personal

- Born Nov. 21, 1995.
- Daughter of Mary and Neill Marshall.
- Has one older sister, Katherine, and one younger brother, Sam.
- Majoring in kinesiology.
- Member of National Honor Society in high school.
- Favorite athlete is Danielle Scott-Aruda and favorite TV show is Gossip Girl.
- Favorite movie is Despicable Me.
- Chose to attend Oregon State because of “the coaching staff and OSU is in the Pac-12.”

#15 | Mary-Kate Marshall

Career (Last)	Category	2015 (Last)
30 (Utah, 10/2/15)	Kills	30 (Utah, 10/2)
88 (UALR, 12/6/14)	Attacks	79 (Utah, 10/2)
4 (Stanford, 10/4/14)	Assists	2-2x (Utah, 11/1)
4 (Arizona State, 11/13/14)	Aces	3 (California, 10/11)
17 (Washington State, 11/6/14)	Digs	14-4x (Oregon, 11/27)
8 (Long Beach St., 9/20/14)	Blocks	6 (California, 10/11)
2 (LBSU, 9/20/14)	Blocks Solo	2 (Long Beach State, 9/19)



Laneshia Reagan #11 OH

Redshirt Sophomore • 5'10" • 1L
Snohomish, Wash.
Snohomish
English

Redshirt Freshman (2015)

- Appeared in 23 matches, making 10 starts, and played in 55 sets.
- Finished with 92 kills, fifth on the team, and six service aces. Recorded 92 digs and 23 blocks.
- Tallied a season-high 14 kills with 10 digs vs. Washington State (Nov. 20).
- Recorded her first double-double at UCLA (Nov. 15), terminating 10 balls and recording 13 digs.
- Buried nine kills with 10 digs at Colorado (Oct. 30).
- Tallied 10 digs with four kills against No. 10 UCLA (Oct. 25).
- Posted five kills at San Diego State (Sept. 5).

2014 (Freshman)

- Redshirted.

Snohomish High School

- Four-year letterwinner in volleyball for coaches Kris Jones and Alex Tarin.
- 2013 Herald Volleyball Player of the Year.
- Also named 2013 Seattle Star Times All Area Team and was on the AVCA All-American Watch List.
- Named to AVCA/MaxPreps Under Armour All-America Second Team.
- Helped team to WESCO 4A Championship as a senior.
- As a junior, in 2012, was a Seattle Star Times All-Area Team selection and WESCO North First-Team selection.
- First-Team All-Area and WESCO North First-Team selection as a sophomore in 2011.
- Earned a bronze medal with USA Select A1 Team in 2011.

Personal

- Born Feb. 15, 1996.
- Daughter of Dorothy and Patrick Reagan.
- Has one older sister, Christina.
- Majoring in English.
- Enjoys writing, reading and hanging out with friends in her spare time.
- Favorite professional athlete is Kobe Bryant.
- Favorite TV show is Gossip Girl and favorite movie is A Walk To Remember.
- Chose Oregon State because “I loved the environment and the coaching staff. The coaches were incredibly welcoming and when I came on my first visit, all of the girls were really sweet and funny. I knew after my first visit I wanted to play volleyball and go to such a great school.”

#11 | Laneshia Reagan

Category	Career (Last)
Kills	14 (Washington State, 11/20/15)
Attacks	36 (Washington State, 11/20/15)
Assists	2 (UCLA, 10/25/15)
Aces	2-2x (California, 11/6/15)
Digs	13 (UCLA, 11/15/15)
Blocks	4 (UCLA, 10/25/15)
Blocks Solo	1 (UCLA, 11/15/15)



Sam Rouleau #21 S

Junior • 5'6" • TR
Eugene, Ore.
Sheldon/Linn-Benton CC
Interior Design

Linn-Benton Community College

- Played two seasons.
- Named an AVCA All-American, an NWAC First-Team selection and all-league First Teamer as a sophomore after playing in all 16 of the team's matches.
- Recorded 539 assists and 46 kills while finishing with 23 service aces and 141 digs.
- Named second-team all-league as a freshman.
- As a freshman, led the team in assists with 357 and tallied 19 kills with 34 service aces and 87 digs.

Sheldon High School

- Four-year letterwinner.
- Four-time all-conference selection.
- Named league MVP and First-Team All-State as a senior.
- Also lettered in golf.

Personal

- Born Jan. 12, 1995 in Portland, Ore.
- Daughter of Sue and Gerald Rouleau. Both parents attended Oregon State.
- Has one brother, Jerry.
- Majoring in interior design.
- Aspires to be an interior designer after college.
- Enjoys going on Pinterest, napping and playing with dogs in her spare time.
- Was on Honor Roll while at Sheldon High School.
- Favorite TV show is One Tree Hill and favorite movie is The Little Mermaid.
- Chose Oregon State because "it was close to home and has a good program for my major."



Jessi Seumalo #0 MB

Senior • 6'1" • 1L
Corvallis, Ore.
Santiam Christian/Southern Idaho
Human Dev. & Family Sciences

Junior (2015)

- Appeared in 76 sets over 23 matches and 17 starts.
- Finished the season with 47 kills (0.62/set), 51 blocks (eight solo, 0.67/set) and 76.5 points (1.01/set).
- Recorded eight blocks vs. No. 10 UCLA (Oct. 25), most by any OSU player in 2015.
- Posted a season-high five kills at Wichita State (Aug. 28) and at Utah (Nov. 1).

College of Southern Idaho

- Earned All-Region honors during her freshman and sophomore sea-

sons.

- As a sophomore had an attack percentage of .318 while averaging 1.85 kills and 1.17 blocks per set.
- She was instrumental in her team making the NJCAA National Championships and finishing third, going 35-3 on the year.

Santiam Christian High School

- While at Santiam Christian Seumalo was part of three state champion teams.
- She earned all-conference honorable mention her sophomore year in 2010, followed by all-conference second team in 2011 and made first-team in 2012.

Personal

- Born Feb. 21, 1995.
- Daughter of Joe and Karen Seumalo.
- Majoring in Human Development and Family Sciences.
- First memory of Oregon State is taking Dad to first day of work in 2006.
- Chose OSU because of the college town atmosphere, it being Pac-12 level and the bond with the other girls on the team.
- Has four brothers, Noah, Levi, Andrew and Isaac. Andrew played for the Oregon State football team from 2009-12 and Isaac, an offensive lineman, was drafted by the Philadelphia Eagles in 2016.

#0 | Jessi Seumalo

Category	Career (Last)
Kills	5-2x (Utah, 11/1/15)
Attacks	10 (Washington State, 11/20/15)
Assists	1-4x
Aces	-
Digs	3-2x (Arizona, 11/25/15)
Blocks	8 (UCLA, 10/25/15)
Blocks Solo	2 (USC, 10/23/15)



Merritt Stewart #6 DS/L

Freshman • 5'6" • HS
Escalon, Calif.
Gregori
Viticulture

Gregori High School

- Started as the setter and libero for head coach Dave Winfrey.
- Named MVP of the Modesto Metropolitan Conference.
- Named all-tournament as the libero in 2014 while also being named all-league.
- Served as team captain.

Personal

- Born Feb. 28, 1998 in Modesto, Calif.
- Daughter of Kim and Robert Stewart.
- Has two sisters, Gray and Caroline, and one brother, Charlie.
- Majoring in viticulture.
- Enjoys travel and music.
- Aspires to be in the wine industry after college.
- Favorite athlete is Steph Curry and favorite TV show is Cupcake Wars.
- Chose Oregon State because of "the campus, the coaches, its location and the Pac-12."



Delaney Taylor #3 S

Sophomore • 5'10" • TR
Berkeley, Calif.
Berkeley/Middle Tennessee
Business

Middle Tennessee

- Played one season for the Conference USA program.
- Appeared in 97 sets as a freshman, leading Middle Tennessee with 740 assists. Totaled 120 digs, 14 service aces and 25 blocks, with one solo.
- Played in 29 matches, starting 17.
- Named C-USA Setter of the Wee Oct. 12 after tallying 62 assists against Rice.

Berkeley High School

- Lettered three years for coaches Lisa Young, Tony Wu and Jorge Pinate.
- Served as co-captain her senior seasons, and recorded 61 aces while finishing second on the team in both blocks and digs.
- Named rookie of the year after her sophomore campaign, and made all-league honorable mention.

Personal

- Born Sept. 9, 1997.
- Daughter of Diana Yovino-Young and Eric Taylor.
- Has one sibling, Morgan.
- Majoring in business.
- Favorite athlete is Carli Lloyd and favorite TV show is New Girl.
- Goal for the team: "to learn from each other and motivate each other so we can dominate as a unit."
- Chose Oregon State because "it is a great school and a great team in an amazing conference. I like the state of Oregon and it is close to home."



Lila Toner #2 OH

Senior • 6'1" • 3L
Istanbul, Turkey
İlbank Sports Club
Psychology

Junior (2015)

- Made starts in 26 matches in 2015, appearing in 28 matches as well as in 90 sets
- Closed the season with 1.97 kills per set, 1.71 digs per set and 2.24 points per set
- Finished third on the team in kills (177) and fourth on the team in points (202).
- Recorded a season-high 15 kills in the win over Utah (Oct. 2).
- Hit .312 with seven kills in the three-set win at California (Oct. 11).
- Had a then-season-high nine kills on .412 hitting (9-2-17) with seven digs vs. Idaho (Aug. 29).

2014 (Sophomore)

- Started 11 matches, appearing in 26.

- Had 46 kills, 10 assists, 13 aces, 131 digs and 11 blocks.
- Had a season-high 13 kills against Long Beach State Sept. 20, with only 2 errors on 29 swings for a .379 attack percentage.
- Had 11 kills in season debut Sept. 6 against Lafayette College.
- Had 10+ digs in four matches, with a season-high 18 against Long Beach State Sept. 20.

2013 (Freshman)

- Played in 30 matches, starting 28, and appeared in 102 matches.
- Averaged a team-leading 2.75 kills per set - 280 overall - and finished with 30 blocks, 194 digs and six service aces.
- Added nine assists.
- Led OSU with 867 total attacks.
- Finished with 10 or more kills 14 times, including a season-best 21 against Oakland (Aug. 31).
- Finished with five double doubles.
- Recorded 20 kills and 13 digs against Washington State (Sept. 27) .
- The 20-dig effort was her fifth of 10 or more straight.
- Had 12 against UC Davis (Sept. 14) and Portland (Sept. 14), then 15 against Long Beach State (Sept. 20).
- Opened Pac-12 play with 10 kills against Oregon (Sept. 25).
- Tallied 13 kills and 11 digs against UCLA (Oct. 12).
- Finished with 18 kills and 10 assists against Cal (Oct. 27).
- Ended the season five four 10-plus kill efforts over last six matches.
- Had 10 kills and six digs against Cal (Nov. 14), then 10 kills against Stanford (Nov. 16).
- Tallied 13 kills and 12 digs against Utah (Nov. 24), then finished season with 11 kills against Oregon (Nov. 29).

İlbank Sports Club

- Competed for the club beginning in the 2011-12 year and took third in Turkey in 2012.
- Team finished second in Ankara in 2012-13.
- Also competed for the Turkish Youth National Team in 2011-12 and helped the club to a gold medal at the European Championships.
- Served as a team captain for two seasons.

Personal

- Born May 2, 1995.
- Daughter of Munip Ozdurak and Irem.
- Father, Munip, competed for the Turkish National Volleyball Team and mother, Irem, was a runner for the Russian Athletics Team.
- Has competed in volleyball since the age of eight.
- Chose Oregon State because "I want to be a part of a successful university and give my contributions there. I believe it is a great opportunity to be a part of the team while getting a great education."

#2 | Lila Toner

Career (Last)	Category	2015 (Last)
21 (Oakland, 8/31/13)	Kills	15 (Utah, 10/2)
58 (Washington St., 9/27/13)	Attacks	44 (Utah, 10/2)
3-4x	Assists	3-4x (Utah, 11/1)
3-3x (USC, 10/19/14)	Aces	1-4x (Oregon, 9/24)
20 (Eastern Michigan, 9/4/13)	Digs	12 (Washington State, 10/16)
4-2x (BYU, 9/12/15)	Blocks	4 (BYU, 9/12)
1-9x	Blocks Solo	1-4x (California, 10/11)

2016 Oregon State Volleyball



Daniela Vargas

#20 MB

Sophomore • 6'1" • 1L
San Jose, Costa Rica
European HS
Business

2015 (Freshman)

- Appeared in one match, Oct. 4 against Colorado, appearing in one set.

European High School

- Played four years.

Personal

- Born May 4, 1996.
- Daughter of Antonio Vargas and Alejandra Quiros.
- Majoring in Business.
- Biggest athletic thrill was beating Puerto Rico with the national team at the U18 Noreca Tournament.
- Chose OSU because of the coaches experience and background in addition to the Business school being one of the best in the country.

#20 | Daniela Vargas

Category	2015 (Last)
Kills	-
Attacks	1 (Colorado, 10/4)
Assists	-
Aces	-
Digs	-
Blocks	-
Blocks Solo	-



Emilie Wilmes

#1 OH

Senior • 6'2" • 2L
St. Paul, Ore.
Canby/Long Beach State
Human Dev. & Family Sciences

Junior (2015)

- Appeared in 18 sets and 13 matches. Tallied nine kills, eight digs and six blocks.
- Registered a pair of kills at Long Beach State (Sept. 19)
- Recorded a kill at then-No. 18 Hawai'i (Aug. 30) and a block vs. Idaho (Aug. 29).

2014 (Sophomore)

- Appeared in 22 matches.
- Totaled 22 kills in 29 sets played.
- Had a season best 6 kills and no errors on 11 attempts Sept. 19 in a win over Fresno State.
- Had 4 kills on 5 swings off the bench against Oregon Sept. 24.

Long Beach State

- Competed for the 49ers as a freshman.
- Played in four matches, appearing in five sets.
- Totaled one kill and one assist

Canby High School

- Lettered four years for head coach Brian Kamahoahoa.
- A three-time first-team all-conference selection in volleyball.
- Also competed in the high jump for one year in track and field .

Personal

- Born Oct. 5, 1994.
- Daughter of Darlene and Mark Wilmes.
- Has two younger sisters, Mindy and Audra, and one younger brother, Peter.
- Majoring in human development & family sciences.
- Enjoys horseback riding and boating on the river in her spare time .
- Member of National Honor Society and state FBLA for three years.
- Also served as a class officer her sophomore year.
- Favorite athlete is Misty May-Treanor.
- Favorite TV show is Scandal and favorite movie is She's The Man.
- Chose Oregon State because it is a "Pac-12 D-I school that is close to home."

#1 | Emilie Wilmes

Career (Last)	Category	2015 (Last)
6 (Fresno State, 9/19/14)	Kills	2-2x (Arizona State, 9/27)
11 (Fresno State, 9/19/14)	Attacks	8-3x (UCLA, 11/15)
1 (Bakersfield, 9/20/14)	Assists	-
-	Aces	-
3-2x (UCLA, 11/15/15)	Digs	3 (UCLA, 11/15)
2 (USC, 11/12/15)	Blocks	2 (USC, 11/12)
1 (USC, 11/12/15)	Blocks Solo	1 (USC, 11/12)

2016 Oregon State Volleyball

Individual Career History

Buehner, Rachel

Season	sp-mp	k	k/s	e	ta	pct	a	a/s	ta	ast%	sa	sa/s	se	ta	srv%
2013	58-23	0	0.00	1	1	-1.000	4	0.07	30	.133	2	0.03	4	81	.951
2014	118-34	1	0.01	0	7	.143	25	0.21	141	.177	19	0.16	39	405	.904
2015	49-19	0	0.00	0	0	.000	7	0.14	26	.269	4	0.08	15	125	.880
TOTAL	225-76	1	0.00	1	8	.000	36	0.16	197	.183	25	0.11	58	611	.905

Season	dig	d/s	re	ta	rec%	bs	ba	tb	b/s	be	bhe	points	pts/s
2013	33	0.57	5	74	.932	0	0	0	0.00	0	1	2.0	0.03
2014	224	1.90	33	539	.939	0	0	0	0.00	0	0	20.0	0.17
2015	40	0.82	2	89	.978	0	0	0	0.00	0	0	4.0	0.08
TOTAL	297	1.32	40	702	.943	0	0	0	0.00	0	1	26.0	0.12

Cheshire, Kory

Season	sp-mp	k	k/s	e	ta	pct	a	a/s	ta	ast%	sa	sa/s	se	ta	srv%
2014	0-0	0	0.00	0	0	.000	0	0.00	0	.000	0	0.00	0	0	.000
2015	53-18	42	0.79	29	158	.082	11	0.21	51	.216	9	0.17	20	150	.867
TOTAL	53-18	42	0.79	29	158	.082	11	0.21	51	.216	9	0.17	20	150	.867

Season	dig	d/s	re	ta	rec%	bs	ba	tb	b/s	be	bhe	points	pts/s
2014	0	0.00	0	0	.000	0	0	0	0.00	0	0	0.0	0.00
2015	74	1.40	6	146	.959	4	30	34	0.64	8	1	70.0	1.32
TOTAL	74	1.40	6	146	.959	4	30	34	0.64	8	1	70.0	1.32

Driscoll, Katelyn

Season	sp-mp	k	k/s	e	ta	pct	a	a/s	ta	ast%	sa	sa/s	se	ta	srv%
2012	29-12	39	1.34	13	140	.186	0	0.00	6	.000	0	0.00	0	0	.000
2013	0-0	0	0.00	0	0	.000	0	0.00	0	.000	0	0.00	0	0	.000
2014	125-34	282	2.26	124	875	.181	4	0.03	33	.121	2	0.02	3	20	.850
2015	107-30	278	2.60	146	806	.164	3	0.03	33	.091	1	0.01	1	27	.963
TOTAL	261-76	599	2.30	283	1821	.174	7	0.03	72	.097	3	0.01	4	47	.915

Season	dig	d/s	re	ta	rec%	bs	ba	tb	b/s	be	bhe	points	pts/s
2012	7	0.24	0	3	1.000	1	12	13	0.45	0	0	46.0	1.59
2013	0	0.00	0	0	.000	0	0	0	0.00	0	0	0.0	0.00
2014	62	0.50	4	71	.944	9	65	74	0.59	14	1	325.5	2.60
2015	71	0.66	0	2	1.000	13	35	48	0.45	5	2	309.5	2.89
TOTAL	140	0.54	4	76	.947	23	112	135	0.52	19	3	681.0	2.61

Ellis, Kayla

Season	sp-mp	k	k/s	e	ta	pct	a	a/s	ta	ast%	sa	sa/s	se	ta	srv%
2015	107-30	1	0.01	0	15	.067	62	0.58	312	.199	12	0.11	12	356	.966
TOTAL	107-30	1	0.01	0	15	.067	62	0.58	312	.199	12	0.11	12	356	.966

Season	dig	d/s	re	ta	rec%	bs	ba	tb	b/s	be	bhe	points	pts/s
2015	365	3.41	21	526	.960	0	0	0	0.00	0	4	13.0	0.12
TOTAL	365	3.41	21	526	.960	0	0	0	0.00	0	4	13.0	0.12

2016 Oregon State Volleyball

Individual Career History

Gravley, Maddy

Season	sp-mp	k	k/s	e	ta	pct	a	a/s	ta	ast%	sa	sa/s	se	ta	srv%
2014	0-0	0	0.00	0	0	.000	0	0.00	0	.000	0	0.00	0	0	.000
2015	18-14	2	0.11	1	7	.143	0	0.00	2	.000	0	0.00	0	0	.000
TOTAL	18-14	2	0.11	1	7	.143	0	0.00	2	.000	0	0.00	0	0	.000

Season	dig	d/s	re	ta	rec%	bs	ba	tb	b/s	be	bhe	points	pts/s
2014	0	0.00	0	0	.000	0	0	0	0.00	0	0	0.0	0.00
2015	3	0.17	0	2	1.000	0	3	3	0.17	0	0	3.5	0.17
TOTAL	3	0.17	0	2	1.000	0	3	3	0.17	0	0	3.5	0.17

Hollingsworth, M.

Season	sp-mp	k	k/s	e	ta	pct	a	a/s	ta	ast%	sa	sa/s	se	ta	srv%
2014	0-0	0	0.00	0	0	.000	0	0.00	0	.000	0	0.00	0	0	.000
2015	61-23	9	0.15	9	42	.000	403	6.61	1230	.328	12	0.20	7	199	.965
TOTAL	61-23	9	0.15	9	42	.000	403	6.61	1230	.328	12	0.20	7	199	.965

Season	dig	d/s	re	ta	rec%	bs	ba	tb	b/s	be	bhe	points	pts/s
2014	0	0.00	0	0	.000	0	0	0	0.00	0	0	0.0	0.00
2015	119	1.95	0	1	1.000	1	19	20	0.33	8	13	31.5	0.51
TOTAL	119	1.95	0	1	1.000	1	19	20	0.33	8	13	31.5	0.51

Marshall, Mary-Kate

Season	sp-mp	k	k/s	e	ta	pct	a	a/s	ta	ast%	sa	sa/s	se	ta	srv%
2014	128-33	540	4.22	158	1738	.220	22	0.17	164	.134	30	0.23	22	448	.951
2015	108-30	407	3.77	136	1339	.202	19	0.18	137	.139	22	0.20	15	404	.963
TOTAL	236-63	947	4.01	294	3077	.212	41	0.17	301	.136	52	0.22	37	852	.957

Season	dig	d/s	re	ta	rec%	bs	ba	tb	b/s	be	bhe	points	pts/s
2014	306	2.39	29	523	.945	5	51	56	0.44	2	1	600.5	4.69
2015	226	2.09	31	526	.941	8	37	45	0.42	3	3	455.5	4.21
TOTAL	532	2.25	60	1049	.943	13	88	101	0.43	5	4	1056.0	4.47

Reagan, Lanesha

Season	sp-mp	k	k/s	e	ta	pct	a	a/s	ta	ast%	sa	sa/s	se	ta	srv%
2014	0-0	0	0.00	0	0	.000	0	0.00	0	.000	0	0.00	0	0	.000
2015	55-23	92	1.67	79	313	.042	8	0.15	49	.163	6	0.11	22	135	.837
TOTAL	55-23	92	1.67	79	313	.042	8	0.15	49	.163	6	0.11	22	135	.837

Season	dig	d/s	re	ta	rec%	bs	ba	tb	b/s	be	bhe	points	pts/s
2014	0	0.00	0	0	.000	0	0	0	0.00	0	0	0.0	0.00
2015	92	1.67	7	240	.971	1	22	23	0.42	8	0	110.0	2.00
TOTAL	92	1.67	7	240	.971	1	22	23	0.42	8	0	110.0	2.00

Seumalo, Jessi

Season	sp-mp	k	k/s	e	ta	pct	a	a/s	ta	ast%	sa	sa/s	se	ta	srv%
2015	76-23	47	0.62	21	136	.191	4	0.05	15	.267	0	0.00	0	4	1.000
TOTAL	76-23	47	0.62	21	136	.191	4	0.05	15	.267	0	0.00	0	4	1.000

Season	dig	d/s	re	ta	rec%	bs	ba	tb	b/s	be	bhe	points	pts/s
2015	21	0.28	1	15	.933	8	43	51	0.67	5	0	76.5	1.00
TOTAL	21	0.28	1	15	.933	8	43	51	0.67	5	0	76.5	1.00

2016 Oregon State Volleyball

Individual Career History

Toner, Lila

Season	sp-mp	k	k/s	e	ta	pct	a	a/s	ta	ast%	sa	sa/s	se	ta	srv%
2013	102-30	280	2.75	171	867	.126	9	0.09	127	.071	6	0.06	32	240	.867
2014	69-26	46	0.67	29	188	.090	10	0.14	95	.105	13	0.19	20	188	.894
2015	90-28	177	1.97	94	530	.157	27	0.30	120	.225	4	0.04	25	148	.831
TOTAL	261-84	503	1.93	294	1585	.132	46	0.18	342	.135	23	0.09	77	576	.866

Season	dig	d/s	re	ta	rec%	bs	ba	tb	b/s	be	bhe	points	pts/s
2013	194	1.90	23	564	.959	5	25	30	0.29	9	2	303.5	2.97
2014	131	1.90	15	265	.943	0	11	11	0.16	3	0	64.5	0.93
2015	154	1.71	16	460	.965	4	34	38	0.42	3	1	202.0	2.24
TOTAL	479	1.84	54	1289	.958	9	70	79	0.30	15	3	570.0	2.18

Vargas, Daniela

Season	sp-mp	k	k/s	e	ta	pct	a	a/s	ta	ast%	sa	sa/s	se	ta	srv%
2015	1-1	0	0.00	0	1	.000	0	0.00	0	.000	0	0.00	0	0	.000
TOTAL	1-1	0	0.00	0	1	.000	0	0.00	0	.000	0	0.00	0	0	.000

Season	dig	d/s	re	ta	rec%	bs	ba	tb	b/s	be	bhe	points	pts/s
2015	0	0.00	0	0	.000	0	0	0	0.00	0	0	0.0	0.00
TOTAL	0	0.00	0	0	.000	0	0	0	0.00	0	0	0.0	0.00

Wilmes, Emilie

Season	sp-mp	k	k/s	e	ta	pct	a	a/s	ta	ast%	sa	sa/s	se	ta	srv%
2014	29-22	27	0.93	11	72	.222	1	0.03	8	.125	0	0.00	0	11	1.000
2015	18-13	9	0.50	11	45	-.044	0	0.00	3	.000	0	0.00	0	1	1.000
TOTAL	47-35	36	0.77	22	117	.120	1	0.02	11	.091	0	0.00	0	12	1.000

Season	dig	d/s	re	ta	rec%	bs	ba	tb	b/s	be	bhe	points	pts/s
2014	7	0.24	1	17	.941	0	4	4	0.14	0	0	29.0	1.00
2015	8	0.44	1	8	.875	1	5	6	0.33	0	0	12.5	0.67
TOTAL	15	0.32	2	25	.920	1	9	10	0.21	0	0	41.5	0.87

2016 Oregon State Volleyball

**2015 Oregon State Volleyball
Oregon State Overall Individual Statistics (as of Jun 21, 2016)
All matches**

Overall record: 6-24 Conf: 4-16 Home: 3-7 Away: 2-15 Neutral: 1-2

##	Player	sp	mp-ms	Attack					Set				Serve				
				k	k/s	e	ta	pct	a	a/s	ta	pct	sa	sa/s	se	ta	pct
15	Marshall, Mary-Kate	108	30-30	407	3.77	136	1339	.202	19	0.18	137	.139	22	0.20	15	404	.963
12	Driscoll, Katelyn	107	30-21	278	2.60	146	806	.164	3	0.03	33	.091	1	0.01	1	27	.963
2	Toner, Lila	90	28-26	177	1.97	94	530	.157	27	0.30	120	.225	4	0.04	25	148	.831
4	Clarke, Haley	108	30-30	154	1.43	37	414	.283	2	0.02	24	.083	0	0.00	1	5	.800
11	Reagan, Lanesha	55	23-10	92	1.67	79	313	.042	8	0.15	49	.163	6	0.11	22	135	.837
3	Backlund, Dana	81	25-15	49	0.60	14	119	.294	604	7.46	1728	.350	16	0.20	32	269	.881
0	Seumalo, Jessi	76	23-17	47	0.62	21	136	.191	4	0.05	15	.267	0	0.00	0	4	1.00
14	Cheshire, Kory	53	18-11	42	0.79	29	158	.082	11	0.21	51	.216	9	0.17	20	150	.867
5	Hollingsworth, R.	61	23-15	9	0.15	9	42	.000	403	6.61	1230	.328	12	0.20	7	199	.965
1	Wilmes, Emilie	18	13-0	9	0.50	11	45	-.044	0	0.00	3	.000	0	0.00	0	1	1.00
8	Gravley, Maddy	18	14-1	2	0.11	1	7	.143	0	0.00	2	.000	0	0.00	0	0	.000
9	Reeder, Darby	98	30-2	1	0.01	1	5	.000	33	0.34	127	.260	17	0.17	17	309	.945
22	Ellis, Kayla	107	30-1	1	0.01	0	15	.067	62	0.58	312	.199	12	0.11	12	356	.966
20	Vargas, Daniela	1	1-0	0	0.00	0	1	.000	0	0.00	0	.000	0	0.00	0	0	.000
7	Buehner, Rachel	49	19-1	0	0.00	0	0	.000	7	0.14	26	.269	4	0.08	15	125	.880
10	Francis, Sydney	36	20-0	0	0.00	0	0	.000	2	0.06	13	.154	1	0.03	3	82	.963
	OREGON STATE	108	30-30	1268	11.7	578	3930	.176	1185	10.9	3870	.306	104	0.96	170	2214	.923
	Opponents	108	30-30	1587	14.6	581	3969	.253	1498	13.8	3903	.384	126	1.17	201	2511	.920

##	Player	sp	Recept			Dig		Blocking					Points			
			re	ta	pct	dig	dig/s	bs	ba	total	blk/s	be	bhe	pts	pts/s	
15	Marshall, Mary-Kate	108	31	526	.941	226	2.09	8	37	45	0.42	3	3	455.5	4.22	
12	Driscoll, Katelyn	107	0	2	1.000	71	0.66	13	35	48	0.45	5	2	309.5	2.89	
2	Toner, Lila	90	16	460	.965	154	1.71	4	34	38	0.42	3	1	202.0	2.24	
4	Clarke, Haley	108	1	15	.933	20	0.19	18	93	111	1.03	5	0	218.5	2.02	
11	Reagan, Lanesha	55	7	240	.971	92	1.67	1	22	23	0.42	8	0	110.0	2.00	
3	Backlund, Dana	81	0	2	1.000	158	1.95	5	31	36	0.44	9	13	85.5	1.06	
0	Seumalo, Jessi	76	1	15	.933	21	0.28	8	43	51	0.67	5	0	76.5	1.01	
14	Cheshire, Kory	53	6	146	.959	74	1.40	4	30	34	0.64	8	1	70.0	1.32	
1	Wilmes, Emilie	18	1	8	.875	8	0.44	1	5	6	0.33	0	0	12.5	0.69	
5	Hollingsworth, R.	61	0	1	1.000	119	1.95	1	19	20	0.33	8	13	31.5	0.52	
8	Gravley, Maddy	18	0	2	1.000	3	0.17	0	3	3	0.17	0	0	3.5	0.19	
22	Ellis, Kayla	107	21	526	.960	365	3.41	0	0	0	0.00	0	4	13.0	0.12	
9	Reeder, Darby	98	19	202	.906	189	1.93	0	0	0	0.00	0	0	18.0	0.18	
10	Francis, Sydney	36	1	40	.975	21	0.58	0	0	0	0.00	0	0	1.0	0.03	
7	Buehner, Rachel	49	2	89	.978	40	0.82	0	0	0	0.00	0	0	4.0	0.08	
20	Vargas, Daniela	1	0	0	.000	0	0.00	0	0	0	0.00	0	0	0.0	0.00	
-	TEAM	-	19	-	-	-	-	-	-	-	-	-	-	-	-	-
	OREGON STATE.....	108	125	2299	.946	1561	14.45	63	352	239.0	2.21	54	37	1611.0	14.92	
	Opponents.....	108	104	2039	.949	1836	17.00	50	421	260.5	2.41	48	25	1973.5	18.27	

2016 Oregon State Volleyball

**2015 Oregon State Volleyball
Oregon State Overall Individual Statistics (as of Jun 21, 2016)
Conference matches**

Overall record: 4-16 Conf: 4-16 Home: 3-7 Away: 1-9 Neutral: 0-0

##	Player	sp	mp-ms	Attack					Set				Serve				
				k	k/s	e	ta	pct	a	a/s	ta	pct	sa	sa/s	se	ta	pct
15	Marshall, Mary-Kate	73	20-20	275	3.77	93	939	.194	13	0.18	91	.143	16	0.22	9	281	.968
12	Driscoll, Katelyn	72	20-13	190	2.64	87	556	.185	2	0.03	24	.083	0	0.00	0	10	1.00
2	Toner, Lila	63	20-18	122	1.94	68	366	.148	16	0.25	54	.296	1	0.02	9	68	.868
4	Clarke, Haley	73	20-20	99	1.36	24	270	.278	1	0.01	19	.053	0	0.00	1	4	.750
11	Reagan, Lanesha	46	17-8	82	1.78	68	285	.049	7	0.15	41	.171	6	0.13	22	127	.827
3	Backlund, Dana	49	15-6	30	0.61	5	57	.439	327	6.67	1022	.320	9	0.18	20	169	.882
0	Seumalo, Jessi	51	14-11	29	0.57	14	88	.170	1	0.02	11	.091	0	0.00	0	4	1.00
14	Cheshire, Kory	28	8-8	18	0.64	18	75	.000	8	0.29	34	.235	6	0.21	9	77	.883
5	Hollingsworth, R.	54	18-14	8	0.15	7	37	.027	365	6.76	1105	.330	10	0.19	6	182	.967
1	Wilmes, Emilie	14	9-0	6	0.43	9	30	-.100	0	0.00	3	.000	0	0.00	0	0	.000
8	Gravley, Maddy	11	10-0	1	0.09	1	4	.000	0	0.00	0	.000	0	0.00	0	0	.000
9	Reeder, Darby	71	20-2	1	0.01	1	4	.000	16	0.23	60	.267	14	0.20	13	220	.941
7	Buehner, Rachel	25	10-0	0	0.00	0	0	.000	3	0.12	9	.333	3	0.12	6	72	.917
20	Vargas, Daniela	1	1-0	0	0.00	0	1	.000	0	0.00	0	.000	0	0.00	0	0	.000
22	Ellis, Kayla	73	20-0	0	0.00	0	13	.000	47	0.64	232	.203	9	0.12	5	243	.979
10	Francis, Sydney	22	11-0	0	0.00	0	0	.000	1	0.05	9	.111	0	0.00	2	40	.950
	OREGON STATE	73	20-20	861	11.7	395	2725	.171	807	11.0	2714	.297	74	1.01	102	1497	.932
	Opponents	73	20-20	1079	14.7	387	2765	.250	1026	14.0	2734	.375	82	1.12	134	1692	.921

##	Player	sp	Receipt			Dig		Blocking					Points			
			re	ta	pct	dig	dig/s	bs	ba	total	blk/s	be	bhe	pts	pts/s	
15	Marshall, Mary-Kate	73	25	366	.932	172	2.36	4	23	27	0.37	3	3	306.5	4.20	
12	Driscoll, Katelyn	72	0	2	1.000	48	0.67	8	25	33	0.46	2	2	210.5	2.92	
2	Toner, Lila	63	10	291	.966	94	1.49	1	19	20	0.32	2	0	133.5	2.12	
4	Clarke, Haley	73	1	10	.900	12	0.16	12	61	73	1.00	2	0	141.5	1.94	
11	Reagan, Lanesha	46	5	215	.977	89	1.93	1	20	21	0.46	5	0	99.0	2.15	
3	Backlund, Dana	49	0	1	1.000	93	1.90	3	18	21	0.43	3	10	51.0	1.04	
0	Seumalo, Jessi	51	1	11	.909	16	0.31	5	33	38	0.75	4	0	50.5	0.99	
14	Cheshire, Kory	28	4	95	.958	48	1.71	3	15	18	0.64	5	1	34.5	1.23	
5	Hollingsworth, R.	54	0	1	1.000	112	2.07	1	17	18	0.33	6	9	27.5	0.51	
1	Wilmes, Emilie	14	1	6	.833	7	0.50	1	2	3	0.21	0	0	8.0	0.57	
8	Gravley, Maddy	11	0	1	1.000	2	0.18	0	1	1	0.09	0	0	1.5	0.14	
9	Reeder, Darby	71	6	99	.939	115	1.62	0	0	0	0.00	0	0	15.0	0.21	
10	Francis, Sydney	22	1	17	.941	17	0.77	0	0	0	0.00	0	0	0.0	0.00	
22	Ellis, Kayla	73	14	396	.965	288	3.95	0	0	0	0.00	0	3	9.0	0.12	
7	Buehner, Rachel	25	1	31	.968	17	0.68	0	0	0	0.00	0	0	3.0	0.12	
20	Vargas, Daniela	1	0	0	.000	0	0.00	0	0	0	0.00	0	0	0.0	0.00	
-	TEAM	-	13	-	-	-	-	-	-	-	-	-	-	-	-	-
	OREGON STATE.....	73	82	1557	.947	1130	15.48	39	234	156.0	2.14	32	28	1091.0	14.95	
	Opponents.....	73	74	1393	.947	1298	17.78	35	289	179.5	2.46	29	16	1340.5	18.36	

2016 Oregon State Volleyball

2015 Oregon State Volleyball Oregon State Match Results (as of Jun 21, 2016) All matches

Date	Opponent	Score	Score-by-set	Overall	Conf	Time	Att.
Aug 28	vs Wichita State	L	0-3 23-25,24-26,19-25	0-1	0-0	1:30 p	
Aug 29	vs Idaho	W	3-0 25-10,25-19,25-19	1-1	0-0	1:15	6718
Aug 30	at #18 Hawaii	L	0-3 20-25,19-25,11-25	1-2	0-0	1:26	6107
Sep 04	at #23 San Diego	L	1-3 20-25,22-25,25-22,13-25	1-3	0-0	1:53	808
Sep 05	vs Pacific	L	1-3 19-25,25-23,19-25,17-25	1-4	0-0	1:50	153
Sep 05	at San Diego State	W	3-1 25-20,20-25,26-24,25-19	2-4	0-0	2:01	204
Sep 11	at #9 BYU	L	0-3 16-25,12-25,16-25	2-5	0-0	1h 16	2788
Sep 12	at #9 BYU	L	1-3 21-25,25-23,19-25,15-25	2-6	0-0	1h 53	1011
Sep 18	at UC Irvine	L	1-3 22-25,21-25,25-19,19-25	2-7	0-0	2:03	219
Sep 19	at Long Beach State	L	0-3 16-25,21-25,16-25	2-8	0-0	1:23	790
* Sep 24	#18 OREGON	L	1-3 16-25,20-25,32-30,16-25	2-9	0-1	2:03	2446
* Sep 27	at #7 Arizona State	L	0-3 18-25,19-25,20-25	2-10	0-2	1:32	1107
* Oct 02	UTAH	W	3-2 24-26,25-21,18-25,25-13,15-12	3-10	1-2	2:22	1101
* Oct 04	COLORADO	L	0-3 19-25,23-25,14-25	3-11	1-3	1:26	846
* Oct 09	at #7 Stanford	L	0-3 19-25,22-25,18-25	3-12	1-4	1:32	1747
* Oct 11	at California	W	3-0 25-17,25-20,25-21	4-12	2-4	1:32	525
* Oct 14	at #4 Washington	L	0-3 13-25,22-25,20-25	4-13	2-5	1:28	1378
* Oct 16	at Washington State	L	1-3 23-25,25-16,22-25,9-25	4-14	2-6	1:49	1092
* Oct 23	#1 USC	L	1-3 20-25,26-24,16-25,18-25	4-15	2-7	2:08	1437
* Oct 25	#10 UCLA	L	2-3 16-25,21-25,25-19,25-23,5-15	4-16	2-8	2:13	966
* Oct 30	at Colorado	L	2-3 18-25,25-23,18-25,25-23,10-15	4-17	2-9	2:25	1116
* Nov 01	at Utah	L	1-3 25-19,22-25,20-25,20-25	4-18	2-10	1:57	441
* Nov 06	CALIFORNIA	W	3-0 26-24,25-16,25-13	5-18	3-10	1:19	1244
* Nov 08	#7 STANFORD	L	0-3 23-25,21-25,18-25	5-19	3-11	1:28	1188
* Nov 12	at #2 USC	L	0-3 15-25,10-25,18-25	5-20	3-12	1:17	696
* Nov 15	at #9 UCLA	L	1-3 18-25,19-25,27-25,19-25	5-21	3-13	2:00	923
* Nov 18	#2 WASHINGTON	L	0-3 19-25,10-25,21-25	5-22	3-14	1:20	783
* Nov 20	WASHINGTON STATE	L	1-3 20-25,17-25,25-21,18-25	5-23	3-15	1:49	1207
* Nov 25	#23 ARIZONA	W	3-1 25-23,27-29,25-19,25-22	6-23	4-15	2:06	766
* Nov 27	at Oregon	L	0-3 21-25,20-25,21-25	6-24	4-16	1:38	2237

Team Record	W-L-T	Attend	Dates	Total	Avg.
Overall:	6-24	Total:	30	42044	1401
Conference:	4-16	Home:	10	11984	1198
Home:	3-7	Away:	17	23189	1364
Away:	2-15	Neutral:	3	6871	2290
Neutral:	1-2				
3 sets:	3-12				
4 sets:	2-10				
5 sets:	1-2				

2016 Oregon State Volleyball

2015 Individual And Team Highs

INDIVIDUAL HIGH	CATEGORY	TEAM HIGH
.481 (15-2-27), Mary-Kate Marshall vs. Idaho (8/29)	Attack Percentage (K-E-TA) (Minimum 12 Kills)	.407 (42-5-91) vs. California (11/6)
30 (30-9-79), Mary-Kate Marshall vs. Utah (10/2)	Kills (K-E-TA)	62 (62-27-189) vs. Utah (10/2)
17 (17-1-40), Mary-Kate Marshall vs. California (10/11)	Kills (Three Sets) (K-E-TA)	50 (50-13-101) vs. Idaho (8/29)
20 (20-6-56), Mary-Kate Marshall at UC-Irvine (9/18)	Kills (Four Sets) (K-E-TA)	66 (66-20-176) vs. Arizona (11/25)
30 (30-9-79), Mary-Kate Marshall vs. Utah (10/2)	Kills (Five Sets) (K-E-TA)	62 (62-27-189) vs. Utah (10/2)
79 (30-9-79), Mary-Kate Marshall vs. Utah (10/2)	Attacks (K-E-TA)	189 (62-27-189) vs. Utah (10/2)
41 (12-2-41), Mary-Kate Marshall at No. 18 Hawai'i (8/30)	Attacks (Three Sets) (K-E-TA)	120 (36-15-120) at No. 7 Stanford (10/9)
61 (19-10-61), Mary-Kate Marshall at No. 23 San Diego (9/4)	Attacks (Four Sets) (K-E-TA)	66 (66-20-176) vs. Arizona (11/25)
79 (30-9-79), Mary-Kate Marshall vs. Utah (10/2)	Attacks (Five Sets) (K-E-TA)	189 (62-27-189) vs. Utah (11/20)
50, Dana Backlund at Colorado (10/30)	Assists	62, vs. Arizona (11/25)
39, Dana Backlund vs. Idaho (8/29)	Assists (Three Sets)	45 vs. Idaho (8/29)
42, Dana Backlund at UC-Irvine (9/18)	Assists (Four Sets)	62, vs. Arizona (11/25)
50, Dana Backlund at Colorado (10/30)	Assists (Five Sets)	58, 2x, last at Colorado (10/30)
26, 2x, last by Kayla Ellis at Colorado (10/30)	Digs	89 vs. Utah (10/2)
15, Darby Reeder vs Wichita State (8/28)	Digs (Three Sets)	47 vs. Idaho (8/29)
22, Kayla Ellis at UC-Irvine (9/18)	Digs (Four Sets)	84, vs. Arizona (11/25)
26, 2x, last by Kayla Ellis at Colorado (10/30)	Digs (Five Sets)	89 vs. Utah (10/2)
3, Mary-Kate Marshall vs. California (10/11)	Service Aces	8 at Colorado (10/30)
8, Jessi Seumalo vs. No. 10 UCLA (10/25)	Total Blocks	18.0 vs. No. 10 UCLA (10/25)
32, Mary-Kate Marshall vs. Utah (10/2)	Points	79, vs. Arizona (11/25)
23.5, Mary-Kate Marshall vs. California (10/11)	Points (Three Sets)	59 vs. Idaho (8/29)
25, Katelyn Driscoll vs. No. 23 Arizona (11/25)	Points (Four Sets)	79, vs. Arizona (11/25)
32, Mary-Kate Marshall vs. Utah (10/2)	Points (Five Sets)	77 vs. Utah (10/2)

The Last Time

OSU lost the first set in a win10/2/15 vs. Utah (3-2)
 OSU lost the first two sets in a win.....8/26/11, at Wyoming (3-2)

OSU beat a top 25 team.....11/25/15, vs. #23 Arizona (3-1)
 OSU beat a top 10 team.....9/8/12, vs. #2 Penn State (3-2)
 OSU beat a top 25 team on road11/13/14 vs. #19 ASU (3-2)
 OSU beat a top 10 team on road.....9/8/12, vs. #2 Penn State (3-2)

OSU had 80-plus digs.....11/23/15, vs. Arizona (84)
 OSU had 90-plus digs.....12/6/14, at UALR (123)
 OSU had 100-plus digs12/6/14, at UALR (123)

OSU had 10-plus blocks.....11/6/15 vs. California (10)
 OSU had 15-plus blocks.....10/25/15 vs. No. 10 UCLA (18)
 OSU had 20-plus blocks9/20/14, vs. LBSU (21)

OSU hit over .400.....11/6/15 vs. California (.407)
 OSU hit over .5008/30/14, vs. Idaho State (.500)
 OSU held opponent to under .100.....9/19/14, vs. Fresno State (-.102)

OSU had four players with 10-plus kills12/6/14 vs. UALR (4)
 No OSU player had 10-plus kills.....11/12/15 at No. 2 USC
 An OSU player had 20-plus kills.....11/23/15, K. Driscoll vs. No. 23 Arizona (24)
 An OSU player had 25-plus kills.....10/30/15, M. Marshall at Colorado (25)
 An OSU player had 30-plus kills.....10/2/15, M. Marshall vs. Utah (30)
 An OSU player had 60-plus attempts.....10/25/15, M. Marshall vs. No. 10 UCLA (61)
 An OSU player had 70-plus attempts10/2/15, M. Marshall vs. Utah (79)

Five OSU players had 10-plus digs12/6/14, vs. UALR (5)
 Three OSU players had 15-plus digs.....12/6/14 at UALR (4)
 An OSU player had 20-plus digs10/30/15, Kayla Ellis at Colorado (26)
 An OSU player had 25-plus digs10/30/15, Kayla Ellis at Colorado (26)
 An OSU player had 30-plus digs12/6/14, Darby Reeder vs. UALR (41)

An OSU player had 3-plus aces.....10/11/15, M. Marshall at California (3)
 An OSU player had 5-plus aces.....9/6/14, Darby Reeder vs. Lafayette (6)
 An OSU player had 7-plus aces9/28/12, Camille Saxton vs. Colorado (8)
 An OSU player had 7-plus blocks.....11/23/15, Haley Clarke vs. No. 23 Arizona (2-5-7)
 An OSU player had 10-plus blocks11/2/14 Arica Nassar vs. California (2-9-11)

An OSU player had 50-plus assists.....10/30/15, Dana Backlund at Colorado (50)
 An OSU player had 60-plus assists.....9/20/13, Tayla Woods vs. LBSU (61)
 An OSU player had 70-plus assists9/11/04, Desma Stovall vs. St. Mary's (75)

2016 Oregon State Volleyball

2015 Match-By-Match Leaders

Date	Opponent	Result	Kills	Attacks	Assists	Digs	Blocks	Points
8/29	vs. Wichita State	L, 0-3	Marshall, 9	Marshall, 34	Backlund, 29	Reeder, 15	3 players, 2	Marshall, 9.5
8/30	vs. Idaho	W, 3-0	Marshall, 15	2 players, 27	Backlund, 39	Reeder, 11	Clarke, 4	Marshall, 16.5
8/30	at No. 18 Hawai'i	L, 3-0	Marshall, 12	Marshall, 41	Backlund, 21	Toner, 10	Toner, 2	Marshall, 14.5
9/4	at No. 23 San Diego	L, 1-3	Marshall, 19	Marshall, 61	Backlund, 33	Reeder, 17	Clarke, 7	Marshall, 20
9/5	vs. Pacific	L, 1-3	Marshall, 15	Marshall, 41	Backlund, 22	Reeder, 10	Clarke, 5	Marshall, 17
9/5	at San Diego State	W, 3-1	Marshall, 18	Marshall, 43	Backlund, 35	Ellis, 14	Clarke, 6	Marshall, 21
9/11	at No. 9 BYU	L, 0-3	Driscoll, 8	Driscoll, 32	2 players, 12	3 players, 5	4 players, 2	Driscoll, 9.5
9/12	at No. 9 BYU	L, 1-3	2 players, 12	Marshall, 40	Backlund, 39	Ellis, 12	2 players, 4	2 players, 13
9/18	at UC-Irvine	L, 1-3	Marshall, 20	Marshall, 56	Backlund, 42	Ellis, 22	2 players, 6	Marshall, 21
9/19	at Long Beach State	L, 0-3	Driscoll, 9	Marshall, 33	Hollingsworth, 17	Ellis, 8	Cheshire, 4	Driscoll, 10.5
9/24	No. 18 Oregon	L, 1-3	Marshall, 19	Marshall, 59	Backlund, 38	Ellis, 14	Clarke, 7	Marshall, 19
9/27	at No. 7 Arizona State	L, 0-3	Toner, 10	Marshall, 38	Backlund, 24	Reeder, 13	2 players, 2	Marshall, 10.5
10/2	Utah	W, 3-2	Marshall, 30	Marshall, 79	Hollingsworth, 46	Ellis, 24	Clarke, 6	Marshall, 32
10/4	Colorado	L, 0-3	Driscoll, 12	Marshall, 41	Hollingsworth, 35	Ellis, 7	Marshall, 2	Marshall, 13
10/9	at No. 7 Stanford	L, 0-3	Marshall, 12	Marshall, 40	Hollingsworth, 32	Ellis, 12	2 players, 4	Marshall, 13.5
10/11	at California	W, 3-0	Marshall, 17	Marshall, 40	Hollingsworth, 36	Marshall, 14	Cheshire, 7	Marshall, 24
10/14	at No. 4 Washington	L, 0-3	Driscoll, 7	Marshall, 29	Hollingsworth, 10	Ellis, 8	3 players, 3	Driscoll, 7
10/16	at Washington State	L, 1-3	Marshall, 14	Marshall, 56	Hollingsworth, 22	Reeder, 13	Cheshire, 4	Marshall, 15.5
10/23	No. 1 USC	L, 1-3	Marshall, 15	Marshall, 59	Hollingsworth, 31	Ellis, 22	Seumalo, 3	Marshall, 16
10/25	No. 10 UCLA	L, 2-3	Driscoll, 18	Marshall, 61	Backlund, 22	Ellis, 26	Seumalo, 8	Driscoll, 20.5
10/30	at Colorado	L, 2-3	Marshall, 25	Marshall, 72	Backlund, 50	Ellis, 26	Backlund, 5	Marshall, 25.5
11/1	at Utah	L, 1-3	Marshall, 14	Marshall, 55	Backlund, 33	Ellis, 19	Backlund, 4	2 players, 15
11/6	California	W, 3-0	Marshall, 9	Marshall, 21	Hollingsworth, 20	Ellis, 13	Clarke, 5	Reagan, 11
11/8	No. 7 Stanford	L, 0-3	Driscoll, 11	Marshall, 33	2 players, 15	Ellis, 10	Clarke, 4	Driscoll, 11.5
11/12	at No. 2 USC	L, 0-3	Driscoll, 6	Marshall, 31	Backlund, 12	2 players, 8	Wilmes, 2	Driscoll, 6.5
11/15	at No. 9 UCLA	L, 1-3	Marshall, 15	Marshall, 58	Backlund, 19	Ellis, 16	Clarke, 6	Marshall, 17
11/18	No. 2 Washington	L, 0-3	Marshall, 15	Marshall, 29	2 players, 14	2 players, 8	Seumalo, 3	Marshall, 15
11/20	Washington State	L, 1-3	Marshall, 16	Marshall, 54	Hollingsworth, 23	Ellis, 15	Seumalo, 4	Marshall, 17
11/25	No. 23 Arizona	W, 3-1	Driscoll, 24	Driscoll, 55	Backlund, 30	Ellis, 21	Clarke, 7	Driscoll, 25
11/27	at Oregon	L, 0-3	Driscoll, 10	Marshall, 39	Backlund, 17	Ellis, 17	Clarke, 5	Driscoll, 11

2016 Oregon State Volleyball

2015 Match-By-Match Comparison

Date	Matchup	K	E	TA	Pct.	A	SA	SE	RE	Digs	BS-BA	BE	Total	BHE
8/28	Oregon State	35	14	106	.198	33	2	10	2	44	6-4	0	8	0
	Wichita State	47	20	118	.229	45	2	9	2	51	1-4	0	3	0
8/29	Oregon State	50	13	101	.366	45	3	6	4	47	1-10	0	6	0
	Idaho	26	13	90	.144	25	4	7	3	34	1-10	1	6	0
8/30	Oregon State	32	18	112	.125	29	3	4	6	46	0-6	1	3	0
	No. 18 Hawai'i	45	9	103	.350	42	6	5	3	53	2-19	1	11.5	1
9/4	Oregon State	44	21	140	.164	41	3	5	4	60	2-18	4	11	1
	No. 23 San Diego	64	25	159	.245	59	4	8	3	70	3-19	1	12.5	1
9/5	Oregon State	45	19	126	.206	40	1	10	4	40	2-16	1	10	0
	Pacific	62	24	135	.281	59	5	10	1	54	0-15	2	7.5	1
9/5	Oregon State	47	20	122	.221	44	5	11	6	42	2-15	3	9.5	0
	San Diego State	50	29	127	.165	47	6	12	5	47	3-10	3	8	3
9/11	Oregon State	26	26	100	.000	26	2	6	5	28	2-9	1	6.5	2
	No. 9 BYU	36	12	78	.308	32	5	4	2	37	2-20	0	12	0
9/12	Oregon State	47	14	139	.237	46	3	4	7	42	2-13	5	8.5	3
	No. 9 BYU	70	26	151	.291	65	7	2	3	67	2-4	4	4	2
9/18	Oregon State	53	24	160	.181	48	4	4	4	52	2-19	3	11.5	1
	UC-Irvine	60	21	143	.273	59	4	5	4	73	1-21	6	11.5	2
9/19	Oregon State	28	14	99	.141	26	4	8	1	30	4-10	4	8	2
	Long Beach State	48	15	100	.330	39	1	5	4	52	0-10	1	5	0
9/24	Oregon State	47	18	152	.191	47	2	6	5	68	1-14	1	8	6
	No. 18 Oregon	70	27	174	.247	67	5	8	2	77	4-8	1	77	0
9/27	Oregon State	33	25	115	.070	31	1	4	1	40	4-2	1	5	0
	No. 7 Arizona State	43	18	113	.221	41	1	3	1	52	10-4	0	12	1
10/2	Oregon State	33	25	115	.070	31	1	4	1	40	4-2	1	5	0
	Utah	43	18	113	.221	41	1	3	1	52	10-4	0	12	1
10/4	Oregon State	37	15	101	.218	36	3	3	4	33	1-4	3	3	0
	Colorado	52	9	105	.410	49	4	7	3	45	1-6	0	4	0
10/9	Oregon State	36	15	120	.175	35	3	6	3	41	0-13	2	6.5	1
	No. 7 Stanford	48	11	104	.356	47	3	8	3	60	1-16	3	9	0
10/11	Oregon State	39	8	100	.310	39	7	6	1	45	3-16	3	11	1
	California	42	25	117	.145	40	1	3	7	52	1-2	4	2	1
10/14	Oregon State	39	8	100	.310	39	7	6	1	45	3-16	3	11	1
	No. 4 Washington	42	25	117	.145	40	1	3	7	52	1-2	4	2	1
10/16	Oregon State	43	28	145	.103	39	4	10	4	59	3-12	3	9	5
	Washington State	43	26	136	.125	41	4	4	4	65	2-25	3	14.5	1
10/23	Oregon State	39	19	155	.129	33	4	0	6	68	4-6	2	7	1
	No. 1 USC	73	18	170	.324	72	6	18	4	88	1-16	3	9	1
10/25	Oregon State	50	28	187	.118	46	3	4	7	81	3-30	4	18	1
	No. 10 UCLA	65	31	183	.186	64	7	4	3	99	3-18	0	12	2
10/30	Oregon State	60	26	186	.183	58	8	7	4	83	1-14	1	8	1
	Colorado	72	22	191	.262	66	4	5	8	83	2-24	0	14	0
11/1	Oregon State	52	20	169	.189	45	2	4	4	74	4-8	1	8	1
	Utah	65	20	168	.268	64	4	10	2	91	0-19	0	9.5	3
11/6	Oregon State	42	5	91	.407	41	5	6	2	39	1-18	1	10	1
	California	38	21	109	.156	37	2	4	5	38	1-2	1	2	2
11/8	Oregon State	40	13	109	.248	36	4	5	6	35	0-12	1	6	0
	Stanford	51	13	104	.365	47	6	5	4	48	0-10	1	5	0
11/12	Oregon State	26	13	98	.133	23	0	6	8	35	2-4	1	4	3
	No. 2 USC	45	11	96	.354	39	8	6	0	49	1-6	1	4	0
11/15	Oregon State	42	28	152	.092	38	4	7	0	61	2-16	2	10	1
	No. 9 UCLA	63	29	164	.207	59	0	5	4	73	1-24	0	13	1
11/18	Oregon State	36	17	100	.190	35	1	5	6	37	0-6	2	3	0
	No. 2 Washington	45	7	96	.396	42	6	5	1	41	1-17	0	9.5	1
11/20	Oregon State	52	32	163	.123	49	3	5	4	59	0-15	0	7.5	0
	Washington State	55	20	141	.248	54	4	5	3	66	0-30	2	15	0
11/25	Oregon State	66	20	176	.261	62	4	4	3	84	2-18	1	9	0
	No. 23 Arizona	65	20	180	.250	62	3	12	4	77	3-12	0	9	0
11/27	Oregon State	37	19	130	.138	36	4	3	3	65	2-10	1	7	3
	Oregon	46	16	132	.227	44	3	3	4	65	1-14	1	8	2

2016 Oregon State Volleyball

Series Histories Vs. 2015 Pac-12 Conference

11/03/79	at Oregon	L, 7-15, 4-15
10/10/80	vs. Oregon	L, 15-4, 15-17, 8-15
10/18/80	vs. Oregon	L, 12-15, 14-16, 11-15
10/25/80	vs. Oregon	L, 12-15, 13-15, 5-15
10/31/80	at Oregon	L, 9-15, 15-10, 11-15
11/13/80	vs. Oregon	L, 15-17, 15-8, 11-15, 15-9, 1-15
11/22/80	vs. Oregon	L, 15-10, 4-15, 15-10, 11-15, 15-17
09/30/81	Oregon	W, 11-15, 15-10, 13-15, 15-11, 15-11
11/20/81	Oregon	W, 15-12, 15-5, 15-9
11/03/82	vs. Oregon	W, 16-14, 15-5, 17-15
11/13/82	at Oregon	W, 15-10, 15-9, 16-14
09/02/83	Oregon	W, 15-6, 6-15, 15-6
09/03/83	Oregon	W, 13-15, 15-6, 15-12, 15-13
09/10/83	vs. Oregon	W, 15-12, 16-14
10/08/83	at Oregon	W, 13-15, 15-2, 13-15, 15-10, 15-4
11/01/83	vs. Oregon	W, 8-15, 14-16, 15-8, 15-4, 15-13
10/06/84	at Oregon	L, 9-15, 4-15, 15-10, 9-15
11/06/84	Oregon	L, 8-15, 2-15, 15-17
11/17/84	vs. Oregon	L, 4-15, 15-8, 10-15, 9-15
10/16/85	Oregon	L, 4-15, 10-15, 7-15
11/09/85	at Oregon	L, 10-15, 9-15, 4-15
10/18/86	at Oregon	L, 4-15, 7-15, 6-15
11/21/86	Oregon	L, 9-15, 9-15, 11-15
10/16/87	Oregon	L, 8-15, 15-8, 11-15, 11-15
11/12/87	at Oregon	L, 5-15, 9-15, 10-15
09/16/88	at Oregon	L, 16-14, 9-15, 4-15, 15-9, 4-15
11/18/88	Oregon	W, 15-10, 15-9, 10-15, 4-15, 15-9
09/02/89	vs. Oregon	L, 13-15, 4-15, 15-4, 15-17
10/06/89	Oregon	L, 8-15, 13-15, 9-15
11/03/89	at Oregon	L, 5-15, 14-16, 15-10, 4-15
09/08/90	Oregon	W, 15-9, 15-11, 14-16, 15-9
09/21/90	at Oregon	L, 15-7, 13-15, 15-6, 13-15, 10-15
10/17/90	Oregon	W, 15-8, 15-12, 15-6
09/13/91	vs. Oregon	L, 15-4, 11-15, 15-8 13-15, 15-17
10/18/91	Oregon	W, 15-10, 15-0, 15-3
11/14/91	at Oregon	L, 10-15, 15-10, 15-5, 14-16, 8-15
10/02/92	at Oregon	L, 15-17, 9-15, 4-15
10/30/92	Oregon	W, 14-16, 17-15, 16-14, 14-16, 15-11
09/17/93	Oregon	W, 9-15, 15-13, 15-13, 15-5
11/20/93	at Oregon	L, 13-15, 7-15, 17-15, 15-7, 13-15
10/05/94	at Oregon	W, 15-7, 15-9, 15-13
11/02/94	Oregon	W, 15-13, 15-3, 15-6
09/23/95	Oregon	W, 15-12, 15-4, 15-7
10/20/95	at Oregon	W, 15-7, 8-15, 10-15, 15-7, 15-12
10/18/96	at Oregon	L, 9-15, 14-16, 15-12, 15-11, 10-15
11/15/96	Oregon	L, 2-15, 5-15, 9-15
10/03/97	Oregon	W, 15-5, 15-9, 6-15, 15-4
10/30/97	at Oregon	W, 15-13, 15-9, 15-5
09/18/98	at Oregon	L, 12-15, 13-15, 11-15
11/20/98	Oregon	W, 10-15, 15-5, 15-10, 15-13
10/08/99	Oregon	W, 15-11, 15-4, 15-5
11/05/99	at Oregon	L, 15-13, 10-15, 5-15, 7-15
09/19/00	at Oregon	W, 12-15, 2-15, 15-11, 15-10, 15-12
10/20/00	Oregon	L, 10-15, 13-15, 3-15
10/10/01	Oregon	W, 30-25, 23-30, 30-18, 30-21
11/09/01	at Oregon	W, 31-29, 30-22, 30-27
10/03/02	at Oregon	W, 30-22, 30-25, 30-25
11/01/02	vs. Oregon	L, 24-30, 30-27, 26-30, 31-33
10/02/03	Oregon	W, 30-26, 30-27, 30-28
10/30/03	at Oregon	W, 30-23, 27-30, 31-29, 30-24
09/24/04	at Oregon	W, 31-29, 30-25, 26-30, 30-21
11/26/04	Oregon	W, 30-23, 30-18, 30-25
10/14/05	Oregon	W, 30-16, 30-24, 31-29
11/10/05	at Oregon	W, 30-28, 30-22, 30-32, 21-30, 17-15
09/29/06	at Oregon	L, 25-30, 25-30, 30-24, 16-30
10/27/06	Oregon	L, 24-30, 22-30, 21-30
10/19/07	Oregon	L, 23-30, 21-30, 20-30
11/16/07	at Oregon	L, 19-30, 30-25, 16-30, 19-30
10/12/08	at Oregon	L, 20-25, 23-25, 14-25
11/07/08	Oregon	L, 16-25, 21-25, 21-25
10/02/09	Oregon	W, 25-21, 21-25, 10-25, 25-22, 16-14
10/30/09	at Oregon	L, 37-39, 25021, 22-25, 21-25
10/15/10	at Oregon	L, 15-25, 12-25, 16-25
11/12/10	Oregon	L, 25-23, 18-25, 14-25, 19-25
11/22/11	Oregon	W, 25-18, 16-25, 17-25
11/25/11	at Oregon	L, 22-25, 16-25, 17-25
09/19/12	at Oregon	L, 12-25, 24-26, 15-25
11/23/12	Oregon	L, 12-25, 15-25, 23-25
09/25/13	Oregon	L, 17-25, 18-25, 19-25
11/29/13	at Oregon	L, 13-25, 19-25, 25-21, 15-25
9/24/14	at Oregon	L, 22-25, 25-27, 19-25
11/28/14	Oregon	W, 27-25, 25-18, 21-25, 25-12
09/24/15	Oregon	L, 16-25, 20-25, 32-30, 16-25
11/27/15	at Oregon	L, 21-25, 20-25, 21-25
Longest OSU Win Streak: 9 Matches (1981-83)		

Stanford		
Overall: 0-63		
Home: 0-31	Three-Set: 0-45	
Away: 0-31	Four-Set: 0-15	
Neutral: 0-1	Five-Set: 0-3	
09/10/81 Stanford L, 14-16, 15-13, 14-16, 12-15		
09/19/82 at Stanford L, 8-15, 5-15, 4-15		
09/19/86 Stanford L, 17-15, 8-15, 12-15, 15-13, 7-15		
10/31/86 at Stanford L, 6-15, 9-15, 2-15		
10/09/87 Stanford L, 5-15, 15-12, 3-15, 7-15		
11/07/87 at Stanford L, 7-15, 5-15, 15-13, 3-15		
10/15/88 Stanford L, 9-15, 2-15, 4-15		
11/11/88 at Stanford L, 1-15, 8-15, 19-17, 6-15		
09/29/89 at Stanford L, 10-15, 7-15, 9-15		
10/28/89 Stanford L, 4-15, 13-15, 5-15		
09/14/90 Stanford L, 10-15, 15-9, 10-15, 8-15		
11/15/90 at Stanford L, 6-15, 8-15, 7-15		
10/11/91 at Stanford L, 2-15, 12-15, 4-15		
11/09/91 Stanford L, 9-15, 3-15, 1-15		
09/25/92 Stanford L, 7-15, 2-15, 8-15		
10/24/92 at Stanford L, 2-15, 6-15, 15-13, 4-15		
10/15/93 at Stanford L, 15-11, 15-17, 14-16, 4-15		
11/13/93 Stanford L, 3-15, 16-14, 11-15, 5-15		
09/30/94 Stanford L, 4-15, 12-15, 1-15		
10/29/94 at Stanford L, 3-15, 5-15, 6-15		
09/15/95 at Stanford L, 6-15, 15-17, 9-15		
11/18/95 Stanford L, 12-15, 4-15, 9-15		
10/11/96 Stanford L, 3-15, 11-15, 9-15		
11/10/96 at Stanford L, 6-15, 13-15, 6-15		
09/26/97 at Stanford L, 4-15, 2-15, 10-15		
10/26/97 Stanford L, 8-15, 16-18, 4-15		
10/16/98 Stanford L, 4-15, 10-15, 8-15		
11/15/98 at Stanford L, 7-15, 3-15, 1-15		
10/01/99 at Stanford L, 11-15, 11-15, 5-15		
10/30/99 Stanford L, 9-15, 4-15, 2-15		
09/15/00 Stanford L, 16-14, 16-14, 9-15, 7-15, 11-15		
11/17/00 at Stanford L, 5-15, 9-15, 3-15		
10/05/01 at Stanford L, 32-34, 17-30, 24-30		
11/03/01 Stanford L, 23-30, 22-30, 33-35		
09/27/02 Stanford L, 23-30, 20-30, 19-30		
10/26/02 at Stanford L, 30-24, 20-30, 16-30, 33-31, 5-15		
09/18/03 Stanford L, 27-30, 30-27, 22-30, 30-16		
11/21/03 at Stanford L, 27-30, 26-30, 21-30		
10/15/04 at Stanford L, 30-24, 19-30, 20-30, 21-30		
11/12/04 Stanford L, 21-30, 27-30, 20-30		
09/29/05 Stanford L, 19-30, 15-30, 28-30		
10/28/05 at Stanford L, 14-30, 20-30, 22-30		
10/19/06 at Stanford L, 19-30, 17-30, 20-30		
11/17/06 Stanford L, 16-30, 16-30, 24-30		
10/04/07 Stanford L, 21-30, 20-30, 25-30		
11/02/07 at Stanford L, 18-30, 19-30, 20-30		
09/26/08 at Stanford L, 16-25, 16-25, 23-25		
11/28/08 Stanford L, 26-28, 18-25, 19-25		
10/16/09 Stanford L, 25-22, 21-25, 23-25, 19-25		
11/14/09 at Stanford L, 18-25, 18-25, 19-25		
10/01/10 at Stanford L, 15-25, 17-25, 19-25		
10/31/10 Stanford L, 17-25, 21-25, 20-25		
10/07/11 Stanford L, 25-22, 23-25, 17-25, 16-25		
11/20/11 at Stanford L, 19-25, 23-25, 26-24, 15-25		
10/07/12 at Stanford L, 19-25, 14-25, 14-25		
11/02/12 Stanford L, 18-25, 30-32, 14-25		
10/25/13 Stanford L, 14-25, 15-25, 19-25		
11/16/13 Stanford L, 22-25, 23-25, 20-25		
10/04/14 at Stanford L, 22-25, 19-25, 27-29		
11/31/14 Stanford L, 17-25, 25-22, 24-26, 15-25		
12/12/14 vs. Stanford L, 20-25, 14-25, 25-22, 15-25		
10/09/15 at Stanford L, 19-25, 22-25, 18-25		
11/08/15 Stanford L, 23-25, 21-25, 18-25		
Longest OSU Win Streak: None		
UCLA		
Overall: 3-56		
Home: 1-28	Three-Set: 0-33	
Away: 2-28	Four-Set: 1-14	
Neutral: 0-0	Five-Set: 2-9	
09/23/86 UCLA L, 15-17, 8-15, 2-15		
11/07/86 at UCLA L, 10-15, 4-15, 8-15		
09/25/87 UCLA L, 2-15, 3-15, 1-15		
10/24/87 at UCLA L, 6-15, 10-15, 9-15		
09/23/88 at UCLA L, 11-15, 8-15, 3-15		
10/22/88 UCLA L, 6-15, 9-15, 2-15		
10/14/89 UCLA L, 15-9, 5-15, 10-15, 4-15		
11/10/89 at UCLA L, 6-15, 8-15, 15-11, 10-15		
09/29/90 at UCLA L, 8-15, 10-15, 10-15		
10/26/90 UCLA L, 11-15, 15-12, 11-15, 10-15		
09/21/91 UCLA L, 5-15, 14-16, 17-16, 15-7, 12-15		
11/22/91 at UCLA L, 4-15, 10-15, 7-15		
10/10/92 at UCLA L, 6-15, 4-15, 5-15		
11/06/92 UCLA L, 9-15, 5-15, 14-16		
09/25/93 UCLA L, 6-15, 11-15, 8-15		
10/22/93 at UCLA L, 9-15, 11-15, 15-8, 10-15		
10/15/94 at UCLA L, 10-15, 9-15, 16-14, 8-15		
11/11/94 UCLA L, 9-15, 3-15, 15-17		
09/30/95 UCLA L, 15-13, 11-15, 13-15, 15-10, 11-15		
10/27/95 at UCLA L, 15-13, 12-15, 8-15, 4-15		
09/21/96 at UCLA L, 13-15, 5-15, 2-15		
11/22/96 UCLA L, 7-15, 7-15, 4-15		
10/11/97 UCLA L, 16-14, 14-16, 7-15, 15-9, 12-15		
11/07/97 at UCLA L, 4-15, 15-11, 13-15, 7-15		
09/27/98 at UCLA L, 11-15, 9-15, 15-13, 9-15		
10/23/98 UCLA L, 6-15, 13-15, 10-15		
10/16/99 UCLA L, 4-15, 15-13, 13-15		
11/12/99 at UCLA L, 5-15, 8-15, 9-15		
09/28/00 at UCLA W, 4-15, 15-10, 7-15, 15-13, 16-14		
10/27/00 UCLA L, 15-9, 15-7, 15-10, 10-15, 7-15		
11/16/01 at UCLA L, 18-30, 25-30, 22-30		
11/19/01 UCLA W, 25-30, 30-14, 30-22, 30-27		
10/10/02 at UCLA L, 33-35, 22-30, 18-30		
11/08/02 UCLA L, 19-30, 25-30, 31-33		
09/25/03 at UCLA L, 20-30, 31-29, 24-30, 24-30		
10/24/03 UCLA L, 13-30, 20-30, 24-30		
10/22/04 UCLA L, 30-23, 25-30 30-27, 24-30, 7-15		
11/19/04 at UCLA L, 30-32, 24-30, 24-30		
10/08/05 at UCLA L, 24-30, 6-30, 13-30		
11/03/05 UCLA L, 21-30, 24-30, 25-30		
09/22/06 UCLA L, 21-30, 18-30, 14-30		
11/24/06 at UCLA L, 12-30, 15-30, 26-30		
10/12/07 at UCLA W, 31-29, 16-30, 30-27, 17-30, 15-13		
11/08/07 UCLA L, 29-31, 30-22, 24-30, 18-30		
10/04/08 UCLA L, 21-25, 25-21, 17-25, 15-25, 11-15		
10/31/08 at UCLA L, 25-22, 15-25, 20-25		
10/24/09 at UCLA L, 18-25, 22-25, 17-25		
11/20/09 UCLA L, 20-25, 23-25, 16-25		
10/22/10 at UCLA L, 13-25, 23-25, 25-23, 14-25		
11/21/10 UCLA L, 14-25, 24-26, 21-25		
10/14/11 at UCLA L, 14-25, 17-25, 14-25		
11/12/11 UCLA L, 17-25, 25-18, 16-25, 18-25		
09/21/12 at UCLA L, 14-25, 18-25, 17-25		
10/12/13 UCLA L, 21-25, 25-23, 16-25, 22-11		
11/08/13 at UCLA L, 15-25, 19-25, 23-25		
11/17/14 at UCLA L, 26-28, 14-25, 25-19, 25-15, 10-15		
11/22/14 UCLA L, 25-19, 20-25, 18-25, 16-25		
10/25/15 UCLA L, 16-25, 21-25, 25-19, 25-23, 5-15		
11/15/15 at UCLA L, 18-25, 19-25, 27-25, 19-25		
Longest OSU Win Streak: 1 Match-3x (Last: 2007)		
USC		
Overall: 9-50		
Home: 6-24	Three-Set: 2-38	
Away: 3-26	Four-Set: 3-7	
Neutral: 0-0	Five-Set: 4-5	
09/26/86 USC W, 15-10, 13-15, 11-15, 15-12, 15-2		
11/08/86 at USC W, 15-17, 15-8, 15-11, 5-15, 15-13		
09/26/87 USC L, 10-15, 8-15, 13-15		
10/23/87 at USC L, 1-15, 5-15, 8-15		
09/24/88 at USC L, 11-15, 7-15, 12-15		
10/21/88 USC W, 15-13, 15-13, 15-7		
10/13/89 USC L, 11-15, 15-2, 10-15, 16-14, 9-15		
11/11/89 at USC L, 16-18, 15-10, 11-11, 10-15, 12-15		
09/28/90 at USC W, 15-12, 15-2, 15-13		
10/27/90 USC L, 15-6, 15-8, 14-16, 8-15, 9-15		
09/20/91 USC L, 15-11, 10-15, 15-17, 5-15		
11/21/91 at USC L, 4-15, 13-15, 3-15		
10/09/92 at USC L, 10-15, 9-15, 12-15		
11/07/92 USC L, 13-15, 15-6, 7-15, 4-15		
09/24/93 USC W, 7-15, 15-5, 15-11, 15-9		
10/23/93 at USC L, 7-15, 7-15, 9-15		
10/14/94 at USC L, 12-15, 6-15, 6-15		
11/12/94 USC L, 6-15, 9-15, 14-16		
09/29/95 USC L, 15-13, 9-15, 7-15, 15-13, 12-15		
10/28/95 at USC L, 7-15, 11-15, 3-15		
09/20/96 at USC W, 7-15, 15-8, 15-10, 15-9		
11/21/96 USC W, 15-13, 15-11, 14-16, 15-12		
10/10/97 USC L, 11-15, 5-15, 8-15		
11/08/97 at USC L, 2-15, 3-15, 7-15		
09/25/98 at USC L, 3-15, 11-15, 13-15		

2016 Oregon State Volleyball

Series Histories Vs. 2015 Pac-12 Conference

10/25/98 USC	L, 5-15, 8-15, 6-15
10/15/99 USC	L, 15-11, 6-15, 9-15, 8-15
11/13/99 at USC	L, 3-15, 2-15, 6-15
09/29/00 at USC	L, 7-15, 3-15, 8-15
10/26/00 USC	L, 7-15, 5-15, 1-15
11/15/01 at USC	L, 23-30, 12-30, 30-25, 18-30
11/20/01 USC	L, 21-30, 9-30, 10-30
10/11/02 at USC	L, 22-30, 21-30, 19-30
11/09/02 USC	L, 27-30, 18-30, 17-30
09/26/03 at USC	L, 24-30, 18-30, 15-30
10/25/03 USC	L, 24-30, 18-30, 15-30
10/21/04 USC	L, 17-30, 24-30, 24-30
11/20/04 at USC	L, 28-30, 25-30, 16-30
10/07/05 at USC	L, 28-30, 19-30, 14-30
11/04/05 USC	L, 16-30, 30-28, 23-30, 18-30
09/21/06 USC	L, 17-30, 22-30, 21-30
11/25/06 at USC	L, 25-30, 15-30, 14-30
10/11/07 at USC	L, 18-30, 23-30, 22-30
11/09/07 USC	L, 27-30, 18-30, 19-30
10/03/08 USC	W, 19-25, 25-23, 25-21, 16-25, 15-8
11/01/08 at USC	L, 25-23, 20-25, 25-20, 19-25, 14-16
10/23/09 at USC	L, 17-25, 15-25, 22-25
11/21/09 USC	L, 21-25, 19-25, 17-25
10/23/10 at USC	L, 24-26, 20-25, 16-25
11/19/10 USC	L, 22-25, 19-25, 17-25
10/15/11 at USC	L, 12-25, 14-25, 25-25
11/11/11 USC	L, 21-25, 18-25, 16-25
11/20/12 USC	L, 10-25, 14-25, 20-25
10/11/13 USC	L, 11-25, 15-25, 15-25
11/10/13 at USC	L, 21-25, 11-25, 12-25
10/19/14 at USC	L, 25-19, 18-25, 17-25, 16-25
11/21/14 USC	W, 25-22, 19-25, 25-23, 25-13
10/23/15 USC	L, 20-25, 26-24, 16-25, 18-25
11/12/15 at USC	L, 15-25, 10-25, 18-25

Longest OSU Win Streak: 2 Matches-2x (Last: 1996)

Utah

Overall: 10-7

Home: 4-1

Away: 5-3

Neutral: 1-3

Three-Set: 2-1

Four-Set: 5-4

Five-Set: 3-0

11/03/78 vs. Utah	L, 6-15, 9-15
11/04/78 vs. Utah	L, 15-17, 16-18, 3-15
10/16/81 vs. Utah	L, 10-15, 10-15
09/02/88 at Utah	W, 15-4, 15-11, 8-15, 11-15, 15-6
09/03/88 at Utah	W, 15-13, 15-12, 5-15, 15-10
09/01/93 at Utah	W, 15-10, 14-16, 15-11, 15-12
09/05/94 vs. Utah	W, 15-10, 15-12, 9-15, 15-7
11/25/95 at Utah	W, 15-10, 15-13, 11-15, 15-9
09/23/11 at Utah	W, 25-23, 31-29, 25-21
10/29/11 Utah	W, 25-12, 25-18, 25-15
09/30/12 Utah	W, 26-24, 25-23, 19-25, 25-22
10/26/12 at Utah	L, 20-25, 12-25, 25-19, 18-25
10/18/13 Utah	L, 22-25, 25-23, 16-25, 14-25
11/24/13 at Utah	L, 25-23, 18-25, 17-25, 24-26
9/27/14 Utah	W, 26-24, 25-20, 16-25, 18-25, 25-13
10/02/15 Utah	W, 24-26, 25-21, 18-25, 25-13, 15-12
11/01/15 at Utah	L, 25-19, 22-25, 20-25, 20-25

Longest OSU Win Streak: 8 Matches (1998-2012)

Washington

Overall: 22-60

Home: 12-28

Away: 8-27

Neutral: 2-5

Three-Set: 9-36

Four-Set: 6-17

Five-Set: 4-4

11/11/77 vs. Washington	L, 9-15, 4-15, 6-15
11/26/77 vs. Washington	L, 5-15, 12-15
10/28/78 vs. Washington	W, 15-13, 15-5
11/03/78 vs. Washington	L, 9-15, 8-15
11/10/78 at Washington	L, 10-15, 9-15
10/12/79 vs. Washington	W, 15-13, 15-5
10/19/79 at Washington	L, 5-15, 4-15, 4-15
11/13/80 vs. Washington	L, 15-11, 3-15, 7-15, 7-15
10/24/81 Washington	L, 15-8, 12-15, 10-15, 12-15
10/29/81 Washington	W, 15-6, 3-15, 15-8, 7-15, 15-6
09/18/82 vs. Washington	L, 16-14, 10-15, 11-15
10/09/82 Washington	W, 15-7, 15-8, 15-13
10/28/82 at Washington	W, 15-8, 10-15, 15-10, 15-11
09/02/83 Washington	W, 15-3, 15-8
09/30/83 Washington	W, 15-10, 15-8, 15-11
10/20/83 at Washington	W, 15-7, 2-15, 15-11, 15-6

09/28/84 at Washington	W, 15-5, 15-10, 15-12
11/09/84 Washington	W, 15-7, 11-15, 15-8, 15-2
10/05/85 at Washington	L, 15-8, 10-15, 9-15, 4-15
11/01/85 Washington	L, 1-15, 9-15, 3-15
10/03/86 at Washington	L, 12-15, 3-15, 11-15
11/15/86 Washington	L, 9-15, 7-15, 13-15
10/03/87 at Washington	L, 11-15, 7-15, 15-11, 5-15
10/30/87 Washington	L, 15-12, 14-16, 10-15, 14-16
10/07/88 at Washington	L, 15-11, 6-15, 9-15, 2-15
11/05/88 Washington	L, 13-15, 12-15, 4-15
09/23/89 Washington	L, 13-15, 10-15, 15-10, 15-10, 11-15
10/20/89 at Washington	L, 3-15, 6-15, 8-15
10/13/90 at Washington	W, 5-15, 13-15, 15-12, 15-6, 15-6
11/09/90 Washington	W, 15-6, 15-4, 15-2
10/05/91 Washington	L, 9-15, 6-15, 3-15
11/01/91 at Washington	W, 9-15, 9-15, 15-4, 15-7, 15-11
09/20/92 at Washington	L, 12-15, 14-16, 15-7, 5-15
11/20/92 Washington	L, 13-15, 14-16, 15-8, 13-15
10/09/93 Washington	W, 15-8, 15-10, 12-15, 15-5
11/05/93 at Washington	W, 15-3, 15-7, 15-7
09/24/94 at Washington	L, 9-15, 13-15, 12-15
10/21/94 Washington	W, 15-8, 15-9, 15-5
10/14/95 Washington	W, 15-10, 15-9, 15-12
11/10/95 at Washington	L, 8-15, 4-15, 9-15
10/05/96 at Washington	L, 3-15, 9-15, 11-15
11/01/96 Washington	L, 8-15, 18-16, 10-15, 2-15
09/21/97 Washington	L, 8-15, 6-15, 10-15
11/21/97 at Washington	L, 14-16, 15-17, 2-15
11/10/98 at Washington	W, 15-6, 15-12, 15-7
11/06/98 Washington	W, 15-13, 16-14, 8-15, 15-8
09/25/99 Washington	L, 10-15, 5-15, 16-14, 11-15
10/22/99 at Washington	L, 9-15, 15-12, 4-15, 7-15
10/14/00 at Washington	W, 15-6, 15-5, 13-15, 15-3
11/10/00 Washington	L, 11-15, 15-12, 5-15, 15-7, 12-15
09/27/01 Washington	W, 30-22, 30-24 30-24 30-24
10/26/01 at Washington	W, 27-30, 36-34, 30-22, 20-30, 15-11
09/19/02 at Washington	L, 21-30, 28-30, 26-30
11/21/02 Washington	L, 30-21, 20-30, 16-30, 21-30
10/11/03 Washington	L, 19-30, 30-23, 24-30, 27-30
11/07/03 at Washington	L, 21-30, 23-30, 22-30
10/02/04 at Washington	L, 19-30, 24-30, 22-30
10/28/04 Washington	L, 30-20, 39-37, 16-30, 27-30, 10-15
10/22/05 Washington	L, 24-30, 18-30, 14-30
11/17/05 at Washington	L, 17-30, 11-30, 23-30
10/07/06 at Washington	L, 14-30, 13-30, 15-30
11/02/06 Washington	L, 20-30, 23-30, 26-30
09/22/07 Washington	L, 23-30, 15-30, 20-30
11/21/07 at Washington	L, 26-30, 20-30, 26-30
10/19/08 at Washington	L, 14-25, 21-25, 13-25
11/14/08 Washington	L, 19-25, 24-26, 16-25
09/27/09 Washington	L, 21-25, 15-25, 21-25
11/25/09 at Washington	L, 21-25, 23-25, 16-25
09/24/10 Washington	L, 20-25, 23-25, 16-25
11/27/10 at Washington	L, 23-25, 17-25, 18-25
10/01/11 at Washington	L, 16-25, 17-25, 25-27
10/21/11 Washington	L, 14-25, 21-25, 18-25
10/12/12 Washington	L, 15-25, 22-25, 14-25
11/17/12 at Washington	L, 15-25, 13-25, 22-25
11/27/13 at Washington	L, 17-25, 11-25, 26-24, 10-25
10/10/14 Washington	W, 21-25, 20-25, 25-23, 13-25
11/09/14 at Washington	L, 17-25, 15-25, 15-25
10/14/15 at Washington	L, 13-25, 22-25, 20-25
11/18/15 Washington	L, 19-25, 10-25, 21-25

Longest OSU Win Streak: 7 Matches (1982-84)

Washington State

Overall: 41-47

Home: 19-19

Away: 14-19

Neutral: 8-9

Three-Set: 11-18

Four-Set: 20-17

Five-Set: 8-10

1976 vs. Washington State	L, 11-15, 8-15, 15-12, 8-15
10/07/77 vs. Washington State	L, 15-8, 12-15, 9-15, 6-15
11/25/77 vs. Washington State	W, 7-15, 15-11, 15-12
10/12/78 vs. Washington State	L, 0-15, 2-15
10/21/78 vs. Washington State	L, 15-9, 8-15, 9-15
10/27/78 vs. Washington State	L, 7-15, 15-12, 14-16
11/17/78 vs. Washington State	W, 15-6, 6-15, 15-12
10/19/79 vs. Washington State	L, 9-15, 15-7, 13-15, 13-15
10/26/79 vs. Washington State	W, 15-5, 15-8
11/09/79 vs. Washington State	L, 7-15, 15-13, 14-16, 12-15
10/11/80 vs. Washington State	L, 12-15, 13-15
10/17/80 at Washington State	W, 15-7, 10-15, 4-15, 15-12, 15-8
11/08/80 vs. Washington State	W, 11-15, 15-11, 15-11, 4-15, 15-6
11/21/80 vs. Washington State	W, 15-3, 17-15, 15-4

10/10/81 Washington State	W, 15-7, 15-6, 12-15, 7-15, 17-15
10/23/81 Washington State	W, 15-7, 9-15, 15-4, 15-8
10/08/82 Washington State	W, 15-4, 15-8, 15-6
10/30/82 at Washington State	W, 15-6, 15-7, 15-6
09/10/83 vs. Washington State	W, 11-1, 11-1
10/01/83 Washington State	W, 15-1, 15-3, 3-15, 15-0
10/22/83 at Washington State	W, 15-11, 15-1, 15-4
08/31/84 vs. Washington State	W, 12-15, 15-7, 11-15, 15-10, 15-9
09/29/84 at Washington State	W, 15-11, 3-15, 3-15, 15-12
11/10/84 Washington State	W, 15-5, 15-7, 15-9
10/04/85 at Washington State	W, 15-7, 15-11, 7-15, 15-8
11/02/85 Washington State	W, 15-3, 8-15, 15-11, 15-1
10/04/86 at Washington State	L, 12-15, 8-15, 15-2, 12-15
11/14/86 Washington State	W, 15-10, 15-6, 15-9
10/02/87 at Washington State	L, 7-15, 6-15, 5-15
10/31/87 Washington State	L, 15-11, 8-15, 11-15, 11-15
10/08/88 at Washington State	L, 6-15, 9-15, 13-15
11/04/88 Washington State	L, 7-15, 10-15, 4-15
09/22/89 Washington State	L, 8-15, 15-8, 15-17, 15-6, 14-16
10/21/89 at Washington State	W, 15-11, 15-12, 15-4
10/12/90 at Washington State	W, 15-10, 15-11, 15-10
11/10/90 Washington State	L, 15-6, 1-15, 1-15, 10-15
09/07/91 vs. Washington State	L, 12-15, 15-2, 5-15, 8-15
09/14/91 vs. Washington State	W, 15-13, 10-15, 15-6, 15-13
10/04/91 Washington State	L, 15-9, 7-15, 14-16, 17-15, 19-21
11/02/91 at Washington State	L, 11-15, 0-15, 9-15
09/18/92 at Washington State	L, 16-14, 4-15, 10-15, 15-17
11/21/92 Washington State	L, 7-15, 15-11, 9-15, 9-15
10/08/93 Washington State	W, 15-11, 15-12, 8-15, 15-3
11/06/93 at Washington State	L, 15-6, 6-15, 9-15, 15-10, 11-15
09/23/94 at Washington State	L, 15-13, 14-16, 9-15, 7-15
10/22/94 Washington State	L, 8-15, 15-9, 15-9, 6-15, 14-16
10/13/95 Washington State	L, 10-15, 2-15, 6-15
11/11/95 at Washington State	L, 8-15, 15-12, 6-15, 2-15
10/04/96 at Washington State	L, 12-15, 12-15, 4-15
11/13/96 Washington State	L, 4-15, 5-15, 9-15
09/19/97 Washington State	L, 15-5, 11-15, 12-15, 15-4, 12-15
11/20/97 Washington State	L, 15-6, 15-12, 15-5
10/09/98 at Washington State	L, 7-15, 13-15, 11-15
11/08/98 Washington State	L, 7-15, 13-15, 15-8, 5-15
09/24/99 Washington State	W, 15-11, 17-15, 15-7
10/23/99 at Washington State	L, 9-15, 8-15, 13-15
10/13/00 at Washington State	L, 15-8, 6-15, 7-15, 11-15
11/11/00 Washington State	L, 15-13, 9-15, 12-15, 4-15
09/28/01 Washington State	W, 30-23, 30-26, 27-30, 33-31
10/25/01 at Washington State	L, 21-30, 13-30, 21-30
09/20/02 at Washington State	L, 24-30, 27-30, 21-30
11/22/02 Washington State	L, 27-30, 27-30, 15-30
10/10/03 Washington State	W, 30-24, 30-21, 25-30, 30-21
11/06/03 at Washington State	W, 23-30, 28-30, 30-20, 30-20, 15-3
10/01/04 at Washington State	W, 27-30, 30-28, 30-27, 35-33
10/29/04 Washington State	W, 30-21, 30-27, 30-18
10/21/05 Washington State	W, 30-13, 31-33, 30-20, 30-18
11/18/05 at Washington State	W, 30-22, 28-30, 30-26, 30-28
10/06/06 at Washington State	L, 30-27, 17-30, 21-30, 31-29, 13-15
11/03/06 Washington State	L, 29-31, 22-30, 26-30
09/21/07 Washington State	W, 32-30, 30-32, 25-30, 30-21, 16-14
11/23/07 at Washington State	L, 30-22, 28-30, 30-28, 25-30, 8-15
10/17/08 at Washington State	W, 25-19, 19-25, 25-18, 25-23
11/16/08 Washington State	L, 17-25, 25-15, 25-21, 24-26, 12-15
09/25/09 Washington State	L, 19-25, 23-25, 16-25
11/27/09 at Washington State	L, 17-25, 25-23, 20-25, 27-25, 11-15
09/25/10 Washington State	W, 25-15, 24-26, 25-22, 25-15
11/26/10 at Washington State	W, 25-27, 29-27, 25-17, 22-25, 15-11
09/30/11 at Washington State	L, 16-25, 23-25, 18-25
10/22/11 Washington State	W, 23-25, 25-17, 23-25, 25-18, 15-7
10/14/12 Washington State	W, 25-20, 23-25, 27-25, 25-17
11/16/12 at Washington State	W, 29-27, 23-23, 21-25, 25-23
09/27/13 Washington State	L, 24-26, 20-25, 25-20, 28-26, 9-15
10/11/14 Washington State	W, 24-26, 25-22, 25-16, 25-20
11/06/14 at Washington State	W, 25-20, 18-25, 15-25, 25-20, 27-25
10/16/15 at Washington State	L, 23-25, 25-16, 22-25, 9-25
11/20/15 Washington State	L, 20-25, 17-25, 25-21, 18-25

Longest OSU Win Streak: 15 Matches (1980-85)