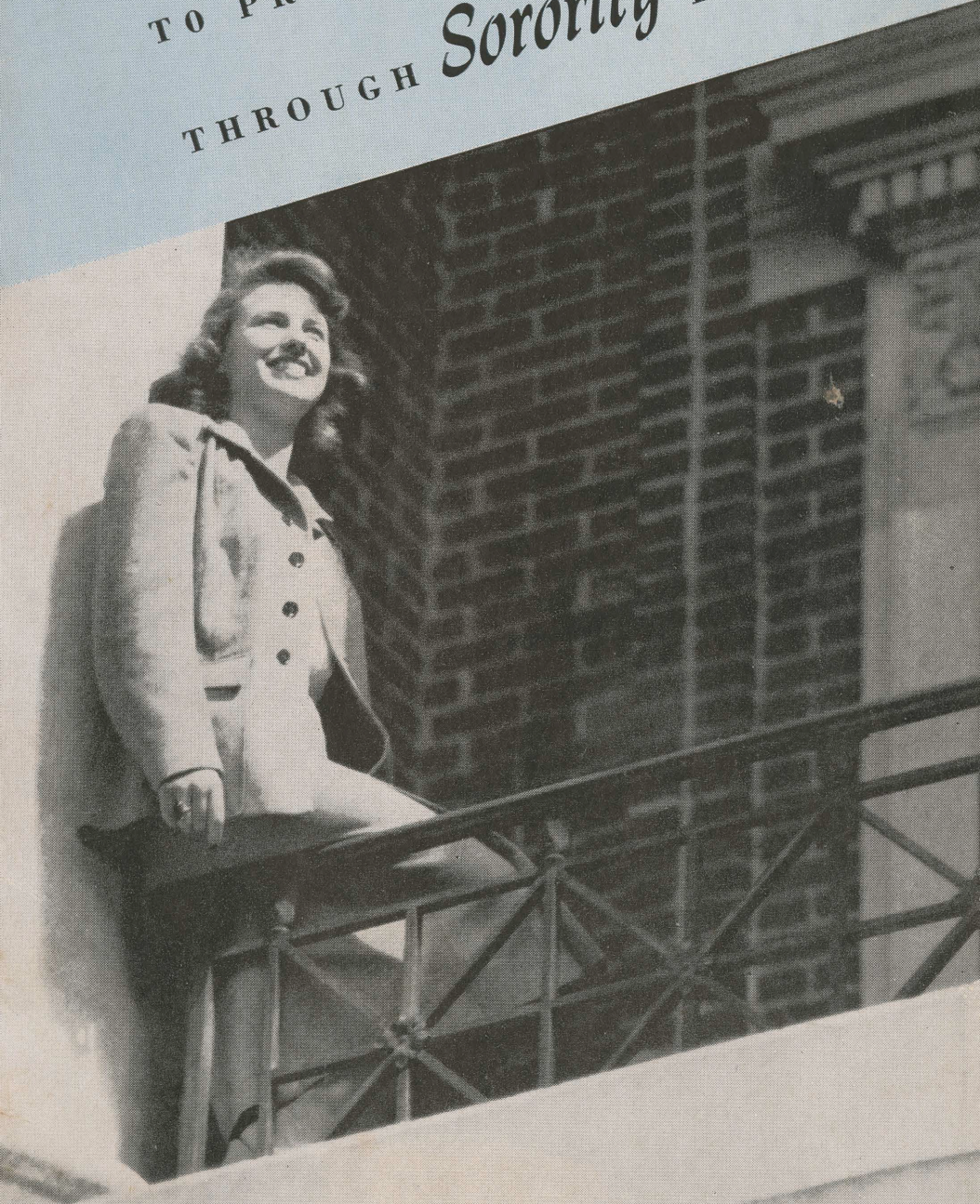


AN Opportunity

TO PREPARE

THROUGH Sorority LIVING



THE PANHELLENIC CREED

We, the fraternity undergraduate members, stand for good scholarship, for guarding of good health, for whole-hearted co-operation with our college's ideals for student life, for the maintenance of fine social standards, and for the serving, to the best of our ability, of our college community. Good college citizenship as a preparation for good citizenship in the larger world of alumnae days is the ideal that shall guide our chapter activities.

We, the fraternity alumnae members, stand for an active, sympathetic interest in the life of our undergraduate sisters, for loyal support of the ideals of our Alma Mater, for the encouragement of high scholarship, for the maintenance of healthful physical conditions in chapter house and dormitory, and for using our influence to further the best standards for the education of the young women of America. Loyal service to chapter, college, and community is the ideal that shall guide our fraternity activities.

We, the fraternity officers, stand for loyal and earnest work for the realization of these fraternity standards. Cooperation for maintenance of fraternity life in harmony with its best possibilities is the ideal that shall guide our fraternity activities.

We, the fraternity women of America, stand for preparation for service through the character building inspired in the close contact and deep friendship of fraternity life. To us, fraternity life is not the enjoyment of special privileges but an opportunity to prepare for wide and wise service.



**Publication of the
Oregon State College
Panhellenic Association
1948-49**

A N *Opportunity*
T O P R E P A R E
T H R O U G H
Sorority **L I V I N G**

Edited by Betty K. Canter

Editorial Staff:

Patye Jo Collins

Pat Nickens

Carol Roeser

Annie Jean Jarvis

**Panhellenic Office
Memorial Union Building
Oregon State College
Corvallis, Oregon**

OREGON STATE COLLEGE

Rushing ANY YEAR

Dear Rushee:

Before long you will be having your first contacts with life on the Oregon State campus. National sororities are a part of that life, and it is to help you become a little better acquainted with them that this booklet has been prepared by the Oregon State Panhellenic association, the governing body of the sixteen sororities on this campus.

Rushing is one of the busiest and most exciting times of your college career, and it is hoped that this booklet will guide you in your activities during Rush Week.

After several years of sorority life, I have come to some conclusions which I am going to share with you, because I remember so well my own doubts and misunderstandings about sororities. I believe that sororities serve a definite purpose in college life. On a campus as large as this it seems natural to unite in smaller groups. As united groups, sororities are able to offer the best in friendship and develop leadership in broad fields of activity. However, membership in a sorority is an experience to be enjoyed without snobbishness, and for those who cannot afford it, or for any other reasons are denied the experience, there should be no bitterness or sense of failure.

To you new girls I can say only this: Do not be carried away with the glamour of rush. Remember that during this short period you will choose some of your closest friends for four years of work and play. You will have opportunity to choose wisely. Remember that everything that is fine in a girl cannot be judged by clothes and appearance. Try to look beneath the exterior and have a sound base for judging the character of the girls rushing you.

Remember that no sorority is "best." A sorority "rates" by its members establishing and upholding sound standards of conduct and scholarship, by their being contributing members in the better activities of campus and home communities, and by their remembering that there is a culture that is more than veneer, which may be acquired through a college education, with all its intellectual stimulation and experience.

I wish you a happy and a successful four years at Oregon State college. Whatever organization you may choose, try to live up to its ideals and standards and make your sorority proud to claim you as a member.

Sincerely yours,
PANHELLENIC PRESIDENT

Any Year.

Greetings FROM THE DEAN

Before I even have opportunity to meet you I should like to extend a sincere greeting, for I know you will be the sort of girl of whom we can be proud, or you would not have chosen to come to Oregon State.

There is a fine mutual responsibility between a girl and her Alma Mater, for each to live up to the other's highest expectations. Your choice of this school imposes upon us an obligation to give you the finest possible opportunity for you to develop in personal adequacy the while you gain a tremendous satisfaction in a sense of belonging.

You may find after you get settled in the college routine that your sense of belonging will not be fulfilled until you have been chosen by one of the fine national sororities on the campus, to become a member. Again there is a mutual responsibility involved for you and the sorority both to live up to each other's highest expectations. This relationship is a good thing for each. The house becomes finer for your efforts, and you become a finer person because you strive to be worthy of the sorority's and our college's confidence in you, and meanwhile you have a grand time because you do belong, and we all claim you as one of us.

After all this, I do look forward to meeting you, really.

Very cordially your dean,

(Mrs.) Buena M. Mockmore

Panhellenic PRESENTS . . .

AN OPPORTUNITY

TO PREPARE

Most girls have a natural curiosity about sororities. People uninformed and unfamiliar with sororities may volunteer information concerning sororities at Oregon State. This information may not have any foundation, or it may label them as purely social groups—which is not wholly true.

It is the desire of Panhellenic to present to girls interested in belonging to a sorority an impartial and unbiased view of the various aspects of sorority life and to answer some of the questions that confront a rushee.

WHAT IS PANHELLENIC?

The **national** organization which binds Oregon State college sororities together is known as Panhellenic. The name comes from the Greek words "pan" meaning "all" and "hellenic" meaning "Greek". Therefore, it is a society of all Greek-letter women.

Every sorority woman is a member of Panhellenic. Each of the sixteen national sororities on campus sends its president as representative to campus Panhellenic council meetings.

Panhellenic is the policy-making body of the sororities.

Delegates to the council discuss sorority standards, scholarship, social affairs, rushing, and other common problems. Resolutions made by the council are returned to the sorority groups for more discussion and decision. Working with others promotes closer cooperation among all sorority women.

Panhellenic projects in recent years have included sponsoring a foreign student with a "half scholarship", and furnishing housing for other student groups which visited the campus.

A secretary-advisor for Panhellenic keeps records of Panhellenic business and helps to coordinate its program. She may be contacted in the Panhellenic office in the Memorial Union building.

AND JUNIOR PANHELLENIC

Panhellenic at Oregon State college has recognized the necessity for acquainting sorority pledges with Panhellenic early in their college careers. Accordingly, they have organized Junior Panhellenic, and as the name implies, it is a junior version of the regular college Panhellenic association. Presidents of the individual pledge classes are its official representatives.

The main purpose of Junior Panhellenic is to further knowledge of all of the sororities among the pledges and to promote inter-fraternity friendship. Working together as a group, it is able to bring back to the individual pledge groups ideas and suggestions which hold possibilities for added strength and service in campus life.

Through working together, pledges become aware of the place they hold as successors to the upperclassmen, not only in their respective houses, but on the campus.

Within Junior Panhellenic, pledges develop a keen sense of their special responsibilities as campus citizens. This group also fosters a cooperative relationship in working with Panhellenic and other campus groups.

WHY JOIN A SORORITY?

The need for sororities for women grew with the expansion of co-education in the United States. As more and more young women left the sure and congenial atmosphere of home surroundings to partake of educational opportunities being offered at distant universities, it became almost imperative that something be substituted that would in some measure provide these necessary things. Greek letter fraternities for women were the answer.

In your chosen sorority is a group of young college women joined by the bonds of friendship. Members are selected on the basis of personal liking, congenial tastes, principles, and ideals. College years offer great opportunities and possibilities for the development of personality, and the fraternity with its carefully chosen membership offers a stimulating environment for such development.

The intimacies of sorority life bring deep and lasting friendships based on mutual understanding; chapter life is an experience in co-operative living, giving members the opportunity to live, work, play, and think with others of similar age and experience. The sorority encourages good scholarship; offers ready

counsel; broadens outside interests; affords opportunity for leadership; promotes loyalty to home and college; provides wholesome social life and fosters high ideals.

Your sorority experience is a learning period which is valuable throughout life.

WHO IS ELIGIBLE?

Recent years have brought many more women students to Oregon State college. Realizing that many more girls wish to enjoy sorority affiliation, sororities have enlarged. In their selection of new members, however, sororities face limitations beyond which they cannot go.

Nearly all freshman girls live in the college dormitory units for their first year to become acquainted with the campus and their fellow students. Sororities cannot always pledge as many girls as they would like to because they must keep their numbers down to a balanced, working-sized group. For this reason, grades are an important issue.

Since sororities stand for good scholarship, they are looking for students who will help maintain their ideals and will pass initiation requirements their first term so that both they and the sorority can enjoy the mutual benefits of full membership. If your high school grades, therefore, were not average or above, it is best that you do not register for fall term rushing, but wait until you have a chance to prove yourself on the campus. There are two other rushing periods, winter and spring terms.

Remember, any girl is eligible for a sorority, not just girls who come from wealthy families, or from particular towns. Neither will a girl be judged by her clothes, for it is beneath the exterior where your true self is found.

WHAT IS RUSH WEEK?

Rush week is a period during which Greek women entertain potential sorority women, or "rushees", in the hope that they will get to know many rushees personally, and that the rushees will become acquainted with them and with their houses.

It is the desire of Panhellenic, and of each individual member of the sororities, that each girl who is interested in belonging to a sorority shall find the niche that fits her personal needs.

When rushees, as guests, go through rushing, they see only the gay side of sorority life. To be sure, sororities do have their gay side,

but there is much of seriousness and responsibility involved in being a good sorority pledge or member.

During the rushing period, the members of each sorority will be talking enthusiastically about their own group. They do not do this because of disregard for other groups, but because they are in a position to give information only about their own. If at any time you want unbiased official information, go to the Panhellenic Advisor in the Panhellenic office and she will try to help you.

Regulations concerning rushing are formulated and agreed upon by Panhellenic, and all sorority women are familiar with them. All these specific rules and regulations concerning rushing will be given to you at the beginning of the rush period. They are merely common sense regulations, laid down by Panhellenic in order that each rushee shall be able to make her own decision when the time comes for signing of pledge cards.

Don't be afraid of rushing. The girls in the sororities are just girls, like yourself, and are as anxious to meet and know you on a cordial, friendly basis as you are to know them.

WHICH SORORITY SHALL I CHOOSE?

During rushing, you will probably have some difficulty trying to decide which sorority you like best. Perhaps you will think you have your mind made up before you rush, only to find that you aren't as positive as you thought you were.

Many uninformed persons have an idea that sororities on a campus range from best to worst, with a few mediocre groups in between. During rushing you will find that this is anything but true.

The truth is that every sorority is best—best for the girls who fit into it. What is sauce for Lucy might not be sauce for Louise.

Choose a group in which you can feel relaxed, and at home. Choose a group with which you feel you could work hard and congenially on the solution of its problems. Remember that the members of the house which you choose to join will be your closest friends during your college years. Many of them will be your life-long friends and companions.

Each sorority has a definite purpose—to teach leadership and group experience.

Remember **you** are the one to choose the girls with whom you will spend the four most wonderful years of your life.

Be wise and open-minded in your choice.

WHAT DOES PLEDGE TRAINING OFFER?

To become a definite part of a sorority, a girl must become acquainted with its history, traditions, standards, and ideals. These are stressed in the program of pledge training.

Further instruction is given in campus traditions, social customs, and etiquette. Emphasis is placed on sisterly group living. There is much which girls must learn of responsibility, poise, graciousness, and organization which comes neither from their school work nor from their social lives alone.

Pledge training and association with other girls promote conduct consistent with good morals and good taste. They also create an atmosphere which will stimulate substantial or even superior intellectual progress and achievement.

The training of girls to become members of the fraternity of their choice develops loyalty as knowledge and appreciation of the standards of the fraternity grow. Through this loyalty, fellowship, and congeniality, many lifelong friendships are developed. Pledge training will be long remembered as a valuable part of your college education for life.

THIS MATTER OF EXPENSE!

The cost of sorority living is approximately equal in all the sorority houses on the Oregon State campus. Variations are slight and the cost is comparable to living in a good dormitory.

Your sorority dollar is divided into board, about 60 percent, rent, about 28.6 percent, social dues, about 1.4 percent, house fund, about four percent, and national and chapter dues, about four percent.

House bills range from 54 to 60 dollars per month for members and pledges living in the house. Bills for those living out amount to about ten dollars. This includes meals at the house several times a week, dues, social fee, and in some cases, a house fund fee.

Added expenses which are paid during the first year include the pledge fee and the initiation fee. Pledge fees range from five to ten dollars. These include the cost of pledge pin and manual.

Initiation fees range from 35 to 67 dollars. The higher fees include the cost of a member's pin.

Membership fees are always amply repaid in opportunities for lasting friendships, extensive participation in house and campus activities, and countless other advantages familiar to every sorority woman.



WE LIVE HERE

Oregon State's sixteen sorority homes, conveniently located near the campus, are a source of pride to students and to residents of Corvallis. Unlike the sororities on many campuses, Oregon State's houses do not make up a "Greek Row", but stand on inviting, shady streets in three directions from the centers of campus activity.

Designed for beauty and comfort, the houses are adequately decorated and furnished to suit the tastes of all. Many have bright, feminine interiors, some are tailored and tweedy,—all are home-like and inviting.

Study rooms, libraries, rumpus rooms, dens, and sun decks are at the disposal of Greek women. Oregon State sororities all boast sleeping porches, which are frequent sites of pillow fights and tumbles from upper bunks.

Beautiful college homes and happy, cooperative group living are the pride of Oregon State's sorority women.



Alpha Chi Omega

33 N. 26th

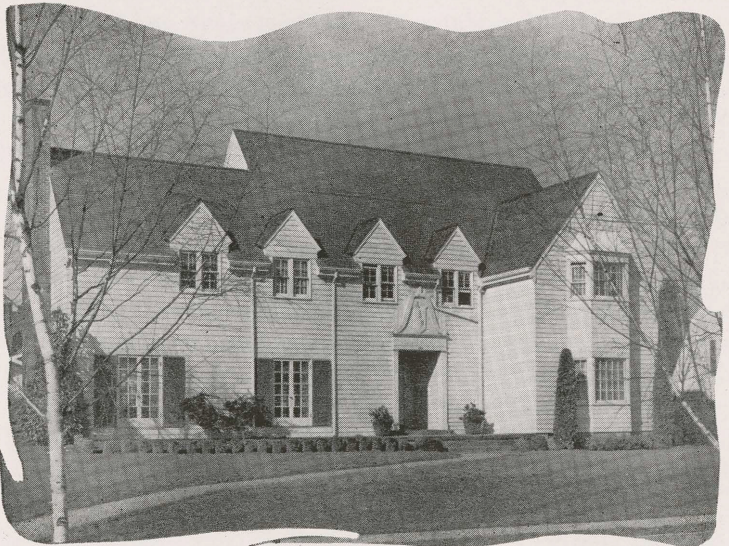
Colors: Scarlet and Olive-Green



Alpha Delta Pi

350 N. 23rd

Colors: Blue and White





Alpha Gamma Delta

26th and Harrison

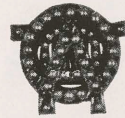
Colors: Red, Buff and Green



Alpha Omicron Pi

660 Madison

Color: Cardinal





Alpha Phi

25th and Harrison

Colors: Bordeaux and Silver Grey

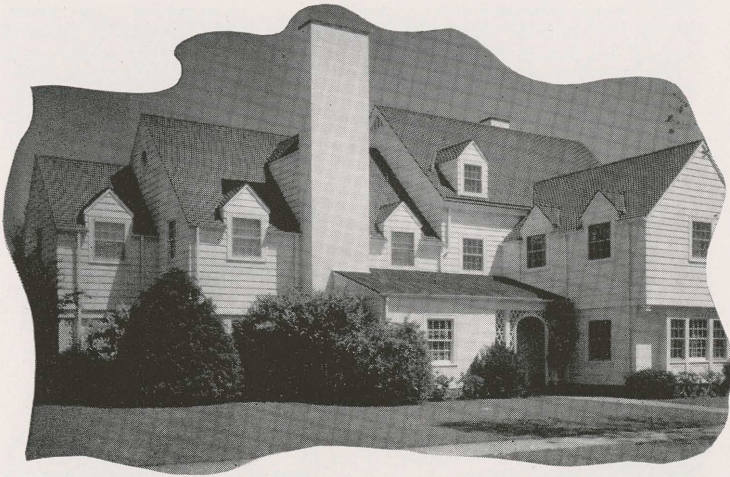


Alpha Xi Delta

330 N. 23rd

Colors: Light Blue, Dark Blue, and Gold





Chi Omega

2857 Van Buren

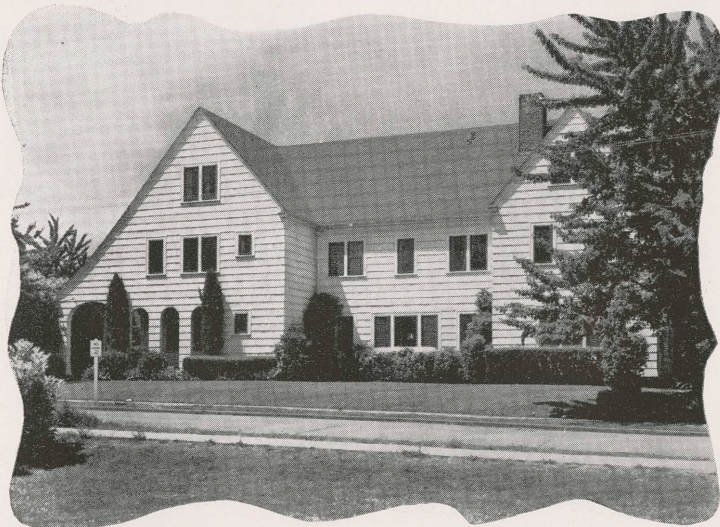
Colors: Cardinal and Straw



Delta Delta Delta

340 N. 26th

Colors: Silver, Gold, and Blue





Delta Gamma

242 N. 15th

Colors: Bronze, Pink, and Blue



Delta Zeta

23rd and Van Buren

Colors: Old Rose and Vieux Green





Gamma Phi Beta

8th and Harrison

Colors: Brown and Mode



Kappa Alpha Theta

145 N. 21st

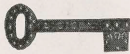
Colors: Black and Gold





Kappa Delta

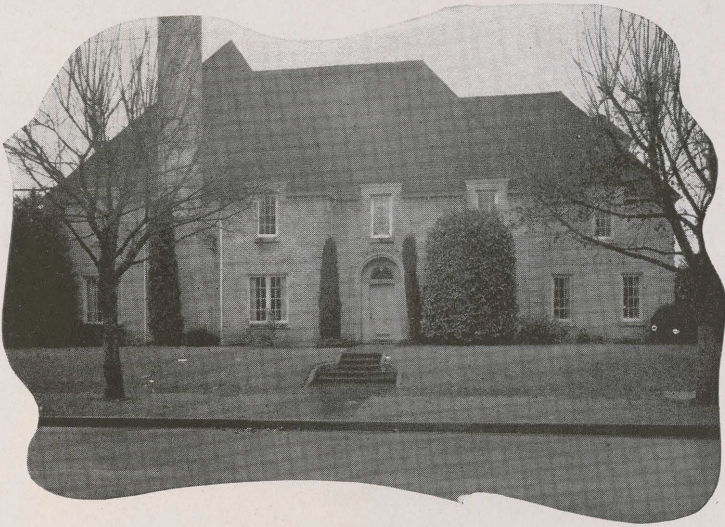
2461 Van Buren
Colors: Green and White



Kappa Kappa Gamma

13th and Van Buren
Colors: Light Blue and Dark Blue





Pi Beta Phi

30th and Harrison
Colors: Wine and Blue



Sigma Kappa

231 N. 26th
Colors: Lavender and Maroon



