

Helen S. Moore



54-55

THE PANHELLENIC CREED

We, the fraternity undergraduate members, stand for good scholarship, for guarding of good health, for whole-hearted co-operation with our college's ideals for student life, for the maintenance of fine social standards, and for the serving, to the



best of our ability, of our college community. Good college citizenship as a preparation for good citizenship in the larger world of alumnae days is the ideal that shall guide our chapter activities.

We, the fraternity alumnae members, stand for an active, sympathetic interest in the life of our undergraduate sisters, for loyal support

of the ideals of our Alma Mater for the encouragement of high scholarship, for the maintenance of healthful physical conditions in chapter house and dormitory, and for using our influence to further the best standards for the education of the young women of America. Loyal service to chapter, college, and community is the ideal that shall guide our fraternity activities.

We, the fraternity officers, stand for loyal and earnest work for the realization of these fraternity standards. Cooperation for maintenance of fraternity life in harmony with its best possibilities is the ideal that shall guide our fraternity activities.

We, the fraternity women of America, stand for preparation for service through the character building inspired in the close contact and deep friendship of fraternity life. To us, fraternity life is not the enjoyment of special privileges but an opportunity to prepare for wide and wise service.

Publication of the
Oregon State College
Panhellenic Association

AN *Opportunity*
TO PREPARE
THROUGH
Sorority LIVING

Edited by Jeanne Hopkins
and Priscilla Horning

Panhellenic Office
Memorial Union
Oregon State College
Corvallis, Oregon

PANHELLENIC Presents . . .

An Opportunity To Prepare

Most girls have a natural curiosity about sororities. People uninformed and unfamiliar with sororities may volunteer information concerning sororities at Oregon State. This information may not have any foundation, or it may label them as purely social groups . . . which is not wholly true.

It is the desire of Panhellenic to present to girls interested in belonging to a sorority an impartial and unbiased view of the various aspects of sorority life and to answer some of the questions that confront a rushee.

WHAT IS PANHELLENIC?

The national organization which binds Oregon State College sororities together is known as Panhellenic. The name comes from the Greek words "pan" meaning "all" and "hellenic" meaning "Greek." Therefore, it is a society of all Greek-letter women. Every sorority woman is a member of Panhellenic. Each of the sixteen national sororities on campus sends its president and rush chairman as representatives to campus Panhellenic council meetings. Panhellenic is the policy-making body of the sororities. Delegates to the council discuss sorority standards, scholarship, social affairs, rushing, and other common problems. Resolutions made by the council are returned to the sorority groups for more discussion and decision. Panhellenic helps to increase the bond of friendship among the delegates and in turn to inspire similar esteem among the sororities on the campus.

Panhellenic projects in recent years have included sponsoring a foreign student, and furnishing housing for other student groups which visited the campus.

An executive secretary for Panhellenic keeps records of Panhellenic business and helps to coordinate its program. She may be contacted in the Panhellenic office, Room 213, Memorial Union.

PANHELLENIC OFFICERS . . .

president Priscilla Horning
secretary Lois Roper
treasurer Carol Ager
executive secretary Mrs. G. R. Flood
adviser Dean of Women, Helen S. Moor

SORORITIES

Alpha Chi Omega

president Neva Tipley
rush chairman Sally McCoy
hostess Mrs. Genevieve Sweet

Alpha Delta Pi

president Pat Maxwell
rush chairman Kay Yolland
hostess

Alpha Gamma Delta

president Winnefred Johnson
rush chairman Marilyn Christensen
hostess Mrs. Leon Sperling

Alpha Omicron Pi

president Jeanne Attig
rush chairman Judie Lundy
hostess Mrs. Bernice Hanks

Alpha Phi

president Alice Knox
rush chairman Laura Wynkoop
hostess

Alpha Xi Delta

president Diane Loennig
rush chairman Cathy Mann
hostess Mrs. Jennie Stuart

Chi Omega

president Joyce Porter
rush chairman Karleen Markussen
hostess Mrs. Clara Lara

Delta Delta Delta

president Marilyn Wilson
rush chairman Laurie Thompson
hostess Mrs. Leona Thompson

Delta Gamma

president Millie Patton
rush chairman Kathy Anderson
hostess Mrs. Betty Mendenhall

Delta Zeta

president Robin Vander Griend
rush chairman Marjorie Knapp
hostess

Gamma Phi Beta

president Marvel Gage
rush chairman Barbara Hutchinson
hostess Mrs. Edna Brooks

Kappa Alpha Theta

president Ann Ridings
rush chairman Diane Griswold
hostess Mrs. E. B. Swenson

Kappa Delta

president Mary Monjay
rush chairman Joanne Wood
hostess Mrs. M. C. Strand

Kappa Kappa Gamma

president Sue Knudson
rush chairman Sue Cooley
hostess Miss Ann Deinema

Pi Beta Phi

president Joan Paine
rush chairman Sue Filler
hostess Mrs. Charlotte Ann Beck

Sigma Kappa

president Jeanne Hopkins
rush chairman Lynn Baumer
hostess Mrs. Mabel G. Crane

JUNIOR PANHELLENIC . . .

Panhellenic at Oregon State College has recognized the necessity for acquainting sorority pledges with Panhellenic early in their college careers. Accordingly, they have organized Junior Panhellenic, and as the name implies, it is a junior version of the regular college Panhellenic association. Presidents of the individual pledge classes are its official representatives.

The main purpose of Junior Panhellenic is to further knowledge of all the sororities among the pledges and to promote inter-fraternity friendship. Working together as a group, it is able to bring back to the individual pledge groups ideas and suggestions which hold possibilities for added strength and service in campus life.

Through working together, pledges become aware of the place they hold as successors to the upperclassmen, not only in their respective houses, but on the campus.

Within Junior Panhellenic, pledges develop a keen sense of their special responsibilities as campus citizens. This group also fosters a cooperative relationship in working with Panhellenic and other campus groups.

WHY JOIN A SORORITY?

College life offers countless challenges to every student. Not only are there the prime motives of further education and scholastic achievement but the opportunities for meeting new friends, and the chance for widening your outlook through the varied extracurricular activity program. One of the many facets of college which presents itself is that of sorority life.

Sororities were originally founded that girls who had the same ideals and the same friends might live together happily through their college years. The purpose has not changed but it has broadened. The organizations encourage good scholarship; they foster school traditions, support the policies of Oregon State College, and develop well-rounded personality and high social standards in their members. With their alumnae, they engage in many worthwhile projects.

Remember, those of you who do not pledge, that sororities offer only a part of the total college experience and that the lasting friendship sororities extend may be obtained from other sources of college life.

WHO IS ELIGIBLE?

Scholastic requirements for rushees are outlined on page 7.

Nearly all freshman girls live in the college dormitory units for their first year to become acquainted with the campus and their fellow students. Sororities cannot always pledge as many girls as they would like to because they must keep their numbers down to a balanced, working-sized group. For this reason, grades are an important issue. Since sororities stand for good scholarship, they are looking for students who will help maintain their ideals and will pass initiation requirements their first term so that both they and the sorority can enjoy the mutual benefits of full membership.

Remember, any girl is eligible for a sorority, not just girls who come from wealthy families, or from particular towns. Neither will a girl be judged by her clothes, for it is beneath the exterior where your true self is found.

WHAT IS RUSH WEEK?

Rush week is a period during which Greek women entertain potential sorority women, or "rushees", in the hope that they will get to know many rushees personally, and that the rushees will become acquainted with them and with their houses.

It is the desire of Panhellenic, and of each individual member of the sororities, that each girl who is interested in belonging to a sorority shall find the niche that fits her personal needs.

When rushees, as guests, go through rushing, they see only the gay side of sorority life. To be sure, sororities do have their gay side, but there is much of seriousness and responsibility involved in being a good sorority pledge or member.

During the rushing period, the members of each sorority will be talking enthusiastically about their own group. They do not do this because of disregard for other groups, but because they are in a position to give information only about their own. If at any time you want unbiased official information, go to the Panhellenic Executive Secretary in the Panhellenic office and she will try to help you.

Regulations concerning rushing are formulated and agreed upon by Panhellenic, and all sorority women are familiar with them. A rush week calendar and rushing rules are included in this book for your benefit and convenience. Use them and they will give you guidance.

Don't be afraid of rushing. The girls in the sororities are just girls, like yourself, and are as anxious to meet and know you on a cordial, friendly basis as you are to know them.

RUSH SCHEDULE

FALL 1954

OREGON STATE COLLEGE

Time and date of a general meeting during New Student Week for those interested in Panhellenic Rushing will be announced later.

Open House

Sunday, September 26— 2:00 to 4:50 p.m. Rushees wear campus dress
6:20 to 8:30 p.m. with comfortable shoes.

To receive and accept **First Date Card**:

Monday, September 27 from 10:30 a.m. to 1:00 p.m. in Room 207 or 208, Memorial Union

First Date Card

Monday, September 27— 6:30 to 7:00 p.m. Campus dress.

7:15 to 7:45 p.m.

8:00 to 8:30 p.m.

8:45 to 9:15 p.m.

Tuesday, September 28—

6:30 to 7:00 p.m.

7:15 to 7:45 p.m.

8:00 to 8:30 p.m.

8:45 to 9:15 p.m.

To receive and accept **Second Date Card**:

Wednesday, September 29 from 10:30 a.m. to 1:00 p.m. Room 207 or 208, Memorial Union.

Second Date Card

Wednesday, September 29— 6:30 to 7:30 p.m. Campus dress.

7:45 to 8:45 p.m.

Thursday, September 30—

6:30 to 7:30 p.m.

7:45 to 8:45 p.m.

To receive and accept **Third Date Card**:

Friday, October 1 from 10:30 a.m. to 1:00 p.m. in Room 207 or 208, Memorial Union.

Third Date Card

Sunday, October 3— 1:30 to 3:00 p.m. Luncheon Rushees wear dressy attire.
7:00 to 9:00 p.m. Dinner

To sign **preference card**:

Sunday, October 3 from 9:00 to 10:00 p.m. in Room 212, Memorial Union.

To sign **pledge card**:

Monday, October 4 from 8:00 a.m. to 1:00 p.m. in Room 213, Memorial Union.

Formal Pledging

Monday, October 4— After 4:00 p.m. and Dress varies.
before closing hours. Some houses require white
and some specify formals.

Open Rush

Open rushing for all houses that have not reached maximum capacity will begin on Monday, October 19.

Girls who have not paid their rush registration fee may be rushed, but must pay the fee before signing their date cards.

In order for girls to be pledged in an informal rush period, they must fulfill the usual scholastic standing of a 4 decile or a 2.00 accumulative.

RUSHING RULES

1. During a formal rush period, no girl may be rushed who has not paid a \$2.00 registration fee and whose name does not appear on the rush list.
2. No girl may be rushed:
 - a) who does not have a 4 high school decile, or
 - b) who does not have an accumulative college GPA of 2.00.
3. Silent period begins New Student Week upon arrival in Corvallis. Silent period is one in which sorority members may wear pins and talk to rushees, but no coke dates or meetings are allowed. Sorority girls may walk to and from classes with rushees during this period. Rushees may not go to sororities except during the specified hours set by Panhellenic. Silent period applies to all houses whether they are rushing or not. If communication is necessary with a rushee, contact the Panhellenic Office or call the Panhellenic President, Priscilla Horning, at 3-7375.
4. Absolutely no form of hot-boxing (any type of rushing other than specified parties) is to take place during rush periods.
5. Themes, decorations, or favors (napkins, placecards, etc.) that are allowed at formal rush functions cannot be taken from the house. This also applies to Corvallis rush parties.
6. Beginning with the return to campus in the fall, the policy will be no double dating with rushees during silent period, and no getting of dates for rushees by affiliated women.
7. During formal rushing, rushees are not to attend school functions with affiliated women.
8. Initiation requirements: "Uniform initiation requirements for all sororities shall be 14 hours of credit with a grade point of 2.30 for the previous term." Of course the college requirement of a 2.00 accumulative must also be fulfilled.

GUIDEPOST TO A WISE CHOICE. . .

As in most cases where a decision must be made, much free advice will find its way to your ears, some of it helpful, but most of it only adding to the confusion in your already addled mind. What can you do about it? How can you pick out with certainty that sorority which rightly should be your college home from among several groups that are all attractive to you?

From its long experience with rushing and pledging, Panhellenic sincerely advocates such a course as this: First take yourself off to some spot that by good fortune seems at the moment to be uninhabited, and hold the sororities in which you are interested up to scrutiny against your conception of an ideal fraternity. No one group will measure up 100 per cent, but the results should be enlightening.

Some of the guideposts Panhellenic has found most valuable to successful choice include the following:

- ▶ Choose a fraternity that offers you opportunities for enduring friendships. Do not be swayed by material possessions such as size, age, and monetary display, but choose a group in which you feel at ease.
- ▶ Choose a group whose members have wide and varied interests and who will expect you to keep up and cultivate friendships outside the group.
- ▶ Choose a group with which you feel you could work hard and congenially on the solution of its problems.
- ▶ Choose a group which thinks well of other groups and allows you to make up your own mind without using "high pressure salesmanship."
- ▶ Choose a group which, though it does not stress the value of the dollar, has enough business sense to be in sound financial condition.

Think it over, and make your own decision! Remember that you are going to live with the group you choose. May you make a wise decision, and may the spirit, ideas, and ideals which you bring to your fraternity enrich all fraternities in the Panhellenic Association on the campus!

WHAT DOES PLEDGE TRAINING OFFER?

To become a definite part of a sorority, a girl must become acquainted with its history, traditions, standards, and ideals. These are stressed in the program of pledge training.

Further instruction is given in campus traditions, social customs, and etiquette. Emphasis is placed on sisterly group living. There is much which girls must learn of responsibility, poise, graciousness, and organization which comes neither from their school work nor from their social lives alone.

Pledge training and association with other girls promote conduct consistent with good morals and good taste. They also create an atmosphere which will stimulate substantial or even superior intellectual progress and achievement.

The training of girls to become members of the fraternity of their choice develops loyalty as knowledge and appreciation of the fraternity grow. Through this loyalty, fellowship, and congeniality, many lifelong friendships are developed.

Pledge training will be long remembered as a valuable part of your college education.

FINANCIALLY SPEAKING . . .

The cost of sorority living is approximately equal in all the sorority houses on the Oregon State campus. Variations are slight and the cost is comparable to living in a good dormitory.

Your sorority dollar is divided into board, about 60 per cent, rent, about 28.6 per cent, social dues, about 1.4 per cent, house fund, about 4 per cent, and national and chapter dues, about 4 per cent.

House bills range from 67.50 to 75 dollars per month for members and pledges living in the house. Bills for those living out amount to about 10 dollars. This includes meals at the house several times a week, dues, social fee, and in some cases, a house fund fee.

Added expenses which are paid during the first year include the pledge fee and the initiation fee. Pledge fees range from 7.50 to 15 dollars. These include the cost of pledge pin and manual. Initiation fees range from 40 to 67 dollars. The higher fees include the cost of a member's pin. Membership fees are always amply repaid in opportunities for lasting friendships, extensive participation in house and campus activities, and countless other advantages familiar to every sorority woman.



WE LIVE HERE

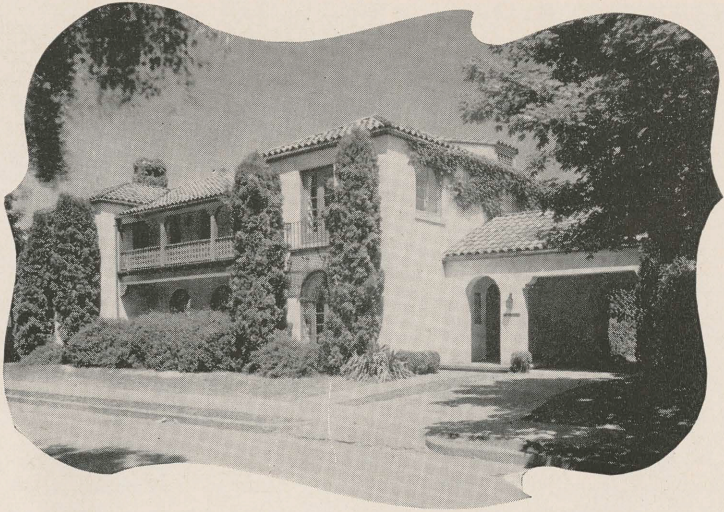
Oregon State's sixteen sorority homes, conveniently located near the campus, are a source of pride to students and to residents of Corvallis. Unlike the sororities on many campuses, Oregon State's houses do not make up a "Greek Row", but stand on inviting, shady streets in three directions from the center of campus activity.

Designed for beauty and comfort, the houses are adequately decorated and furnished to suit the tastes of all. Many have bright, feminine interiors, some are tailored and tweedy—all are home-like and inviting.

Study rooms, libraries, rumpus rooms, dens, and sun decks are at the disposal of Greek women. Oregon State sororities all boast sleeping porches, which are frequent sites of pillow fights and tumbles from upper bunks.

Beautiful college homes and happy, cooperative group living are the pride of Oregon State's sorority women.

On the following pages we give you a street side look



Alpha Chi Omega

33 N. 26th

Colors: Scarlet and Olive-Green



Alpha Delta Pi

350 N. 23d

Colors: Blue and White

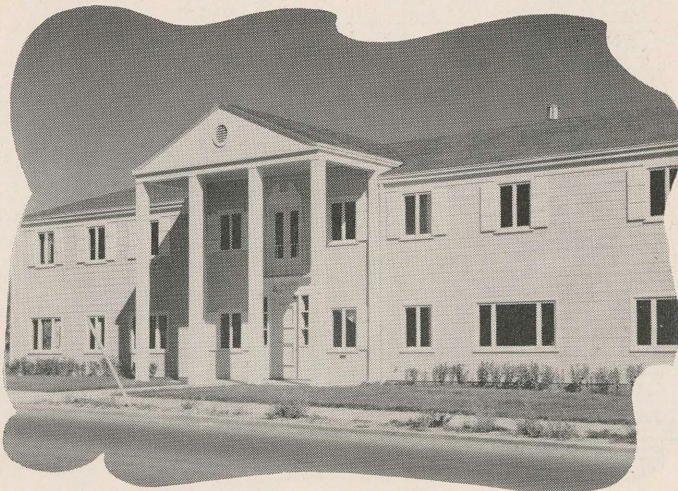
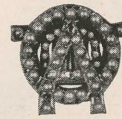


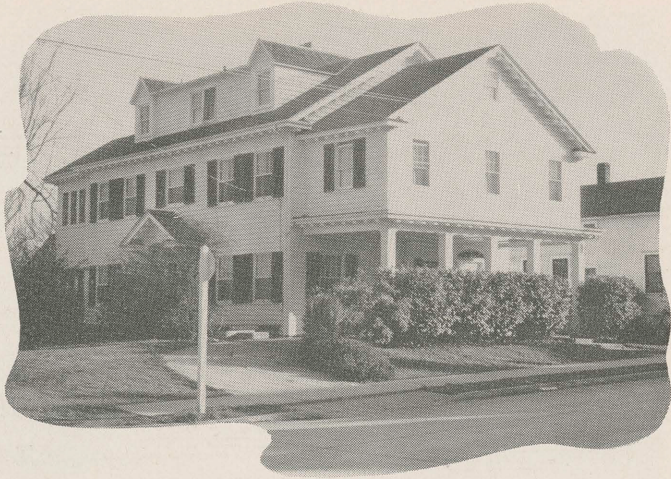


Alpha Gamma Delta
26th and Harrison
Colors: Red, Buff, and Green



Alpha Omicron Pi
25th and Harrison
Colors: Cardinal





Alpha Phi

357 N. 25th

Colors: Bordeaux and Silver Grey

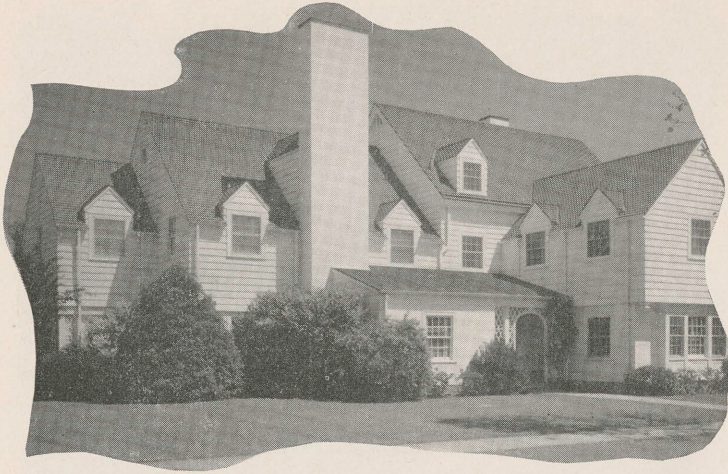


Alpha Xi Delta

330 N. 23d

Colors: Light Blue, Dark Blue, and Gold





Chi Omega

2857 Van Buren

Colors: Cardinal and Straw

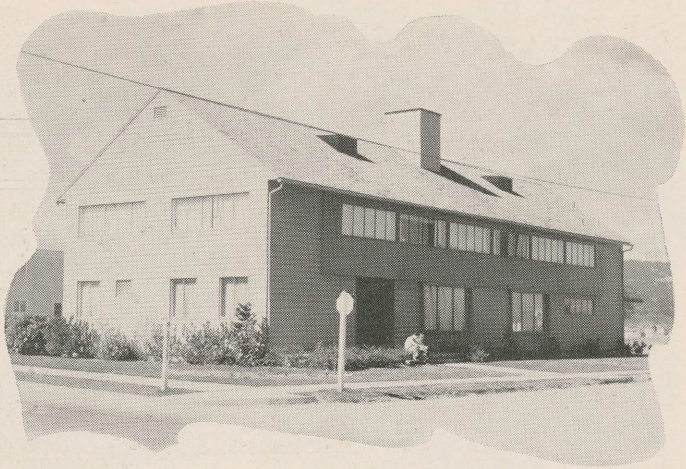


Delta Delta Delta

340 N. 26th

Colors: Silver, Gold, and Blue





Delta Gamma

23d and Harrison

Colors: Bronze, Pink, and Blue

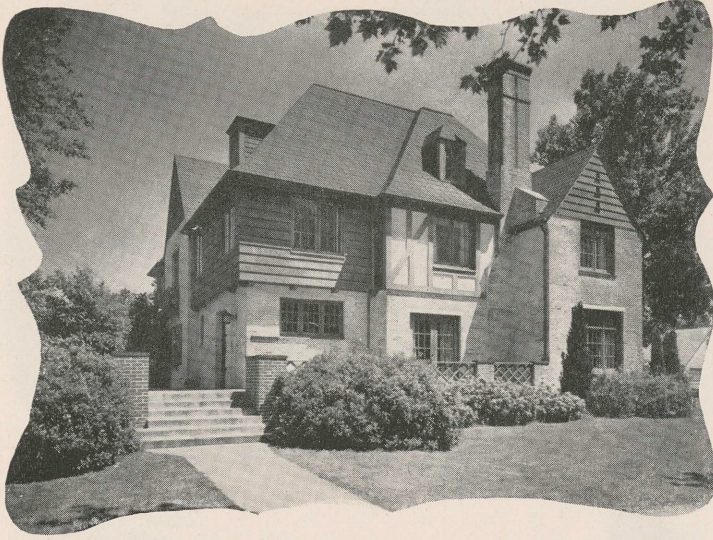


Delta Zeta

23d and Van Buren

Colors: Old Rose and Vieux Green





Gamma Phi Beta

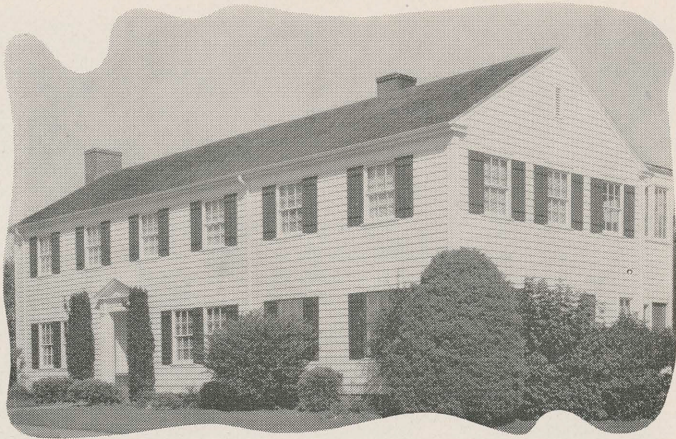
8th and Jefferson
Colors: Brown and Mode



Kappa Alpha Theta

145 N. 21st
Colors: Black and Gold



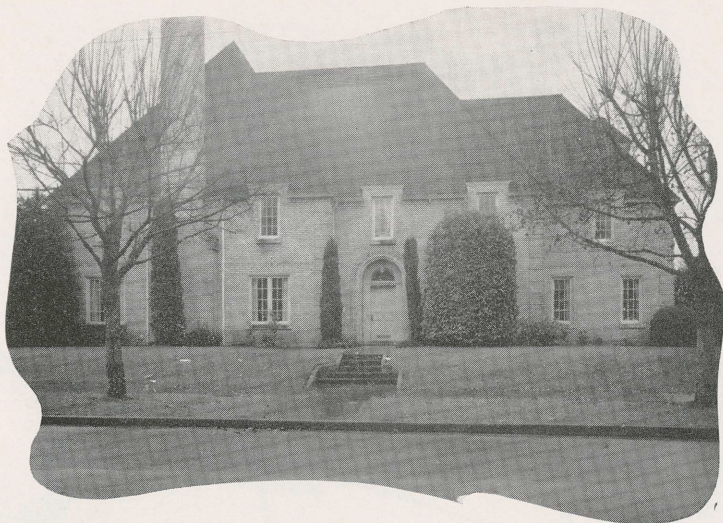


Kappa Delta
2461 Van Buren
Colors: Green and White



Kappa Kappa Gamma
13th and Van Buren
Colors: Light Blue and Dark Blue





Pi Beta Phi

30th and Harrison
Colors: Wine and Blue



Sigma Kappa

231 N. 26th
Colors: Lavender and Maroon

