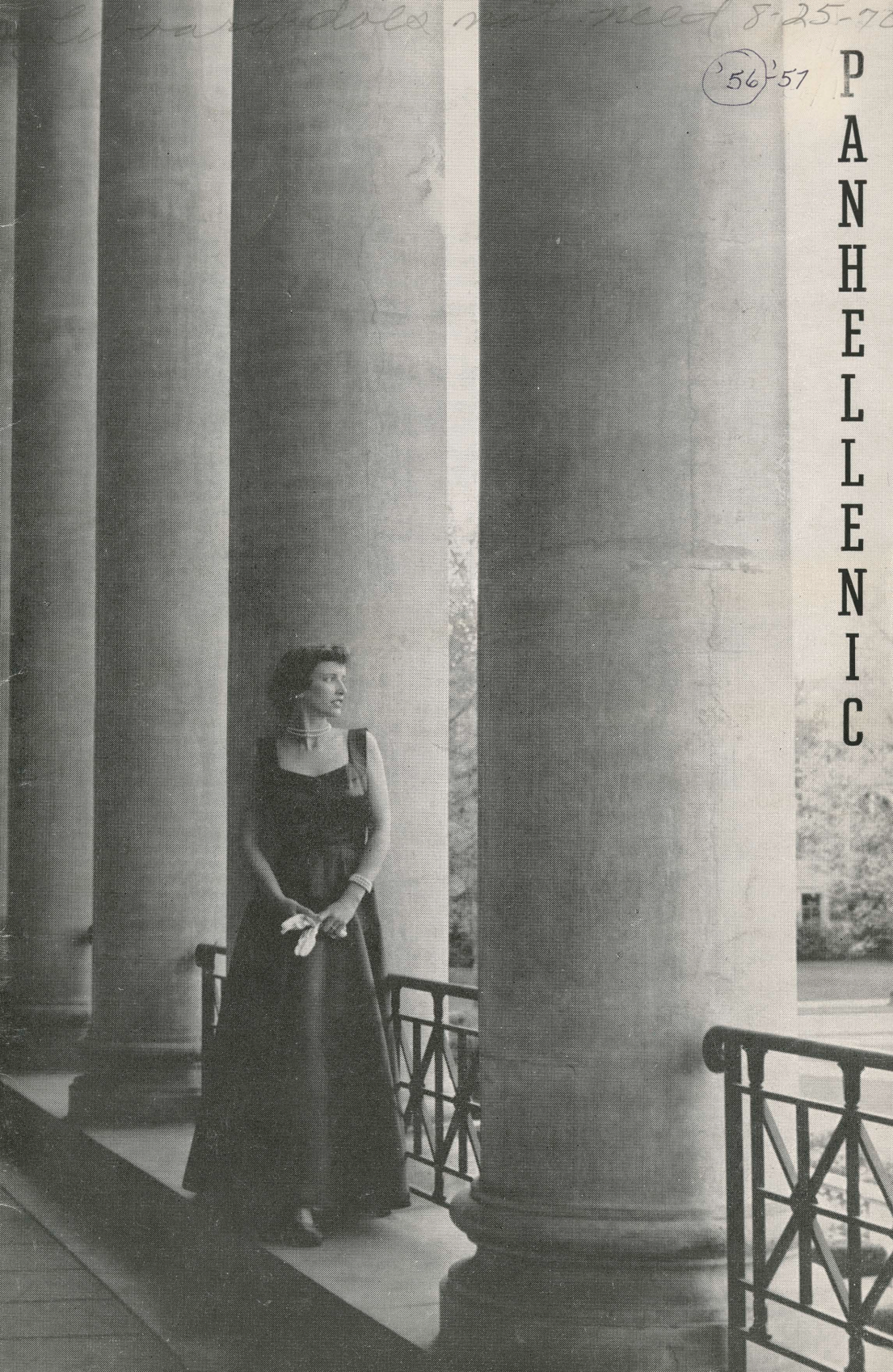


Library does not need 8-25-57

(56) 57

P
A
N
H
E
L
L
E
N
I
C



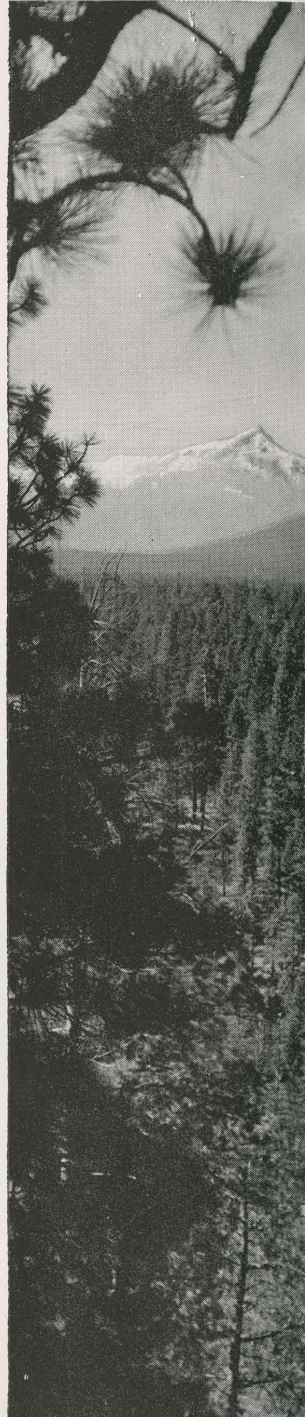
THE PANHELLENIC CREED . . .

WE, the fraternity undergraduate members, stand for good scholarship, for guarding of health, for wholehearted cooperation with our college's ideals for student life, for the maintenance of fine social standards, and for the serving to the best of our ability, of our college community. Good college citizenship, as a preparation for good citizenship in the large world of alumnae days, is the ideal that shall guide your chapter activities.

WE, the fraternity alumnae members, stand for an active, sympathetic interest in the life of our undergraduate sisters, for loyal support of the ideals of our Alma Mater, for the encouragement of high scholarship, for the maintenance of healthful physical conditions in chapter house and dormitory, and for using our influence to further the best standards for the education of the young women of America. Loyal service to chapter, college, and community is the ideal that shall guide our fraternity activities.

WE, the fraternity undergraduate officers, stand for loyal and earnest work, for the realization of these fraternity standards. Cooperation for maintenance of fraternity life in harmony with its best possibilities is the ideal that shall guide the fraternity activities.

WE, the fraternity women of America, stand for preparation for service through the character-building inspired in the close contact and deep friendship of fraternity life. To us, fraternity life is not the enjoyment of special privileges, but an opportunity to prepare for wide and wise human service.



Publication of the
Oregon State College
Panhellenic Association

1 Aug 56 Gift cost 25¢

RUSHING AND YOU

© 1956-59

Edited by Janet Jones
Karen Kendall
Dorothy Harvey
Sketches by Dixie Culver

Panhellenic Office
Memorial Union
Oregon State College
Corvallis, Oregon

WHAT IS PANHELLENIC? . . .



The word **Panhellenic** comes from the Greek words "pan" meaning "all" and "hellenic" meaning "Greek."

Panhellenic is an organization of college women from all over the nation. It binds all the sororities on the many different campuses together. Each campus has its own local group that meets together at least once a month to discuss sorority standards, scholarship, social affairs, rushing, and other common problems.

Each of the 16 national sororities on the Oregon State College campus sends 2 representatives—the rush chairman and the official Panhellenic delegate—to council meetings. Resolutions are made by this council and returned to the sorority groups for discussion and decision. In this way Panhellenic helps increase the bond of friendship among delegates and in turn inspires similar esteem among sororities on the campus.

Panhellenic projects in recent years have included sponsoring a foreign student and furnishing housing for other student groups visiting the campus.

An executive secretary for Panhellenic keeps records of Panhellenic business and helps to coordinate its program. She may be contacted in the Panhellenic Office, Memorial Union 213. Be sure to go there for help.

Official advisor for Panhellenic is Miss Helen S. Moor, Dean of Women. Feel free to talk over your problems with her at her office in Commerce Hall 114.



WELCOME RUSHEE . . .

Dear Rushees:

Panhellenic welcomes you to Oregon State. Panhellenic is an organization designed to unify activities among all sororities.

Sororities are more than social organizations. They work for high scholarship, develop loyalty and cooperation, and support certain philanthropic projects. Life in a sorority is like life anywhere . . . it's a two-way relationship. You gain from the sorority in the proportion to which you contribute.

Rush is composed of a series of social functions designed to give you, the rushee, an idea which houses best suit you. At the same time it gives the houses an opportunity to see which girls best fit their needs. Rush is an opportunity to make many friendships that will last throughout your life, regardless of your final choice.



Do have a wonderful time; but remember, you are preparing for a decision which will be a major factor in your future life. Let this be your decision. Others may have ideas as to what you should do, but you are the one who has to live with this decision—so you decide.

It will be to your advantage to return the registration card and fee early if you wish to rush. Registration will be open for a limited time during New Student Week.

If you have any questions not answered in this booklet, or need any help, please feel free to come to the Panhellenic Office, or contact me. Your welfare is our first concern.

Sincerely,

CAROL AGER

Panhellenic President

PATTERNS AND PERFORMANCES . . .

Sororities on the Oregon State College campus have many standards and ideals. Mrs. Gertrude Fariss, a member of the National Panhellenic Council, summed these up for us in a recent talk.

. . . The first pattern for all Greek groups is democracy.

One of the important aims of Panhellenic is to give every sorority woman the opportunity to be an individual and to be able to think for herself. There is no sorority member who counts only for "one-half"—everyone counts for "one."

. . . The second standard is tolerance.

In each group it is stressed that consideration for others is an asset and that you should be tolerant of everyone with whom you come in contact.

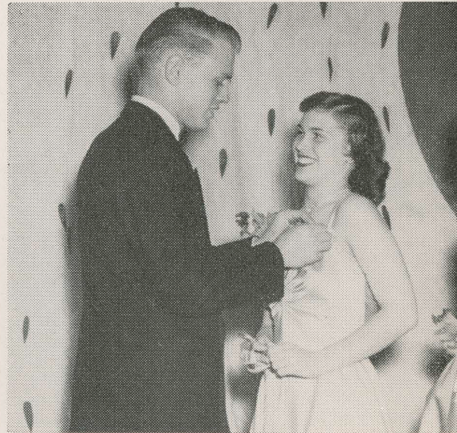
. . . The third aim is scholarship.

One of the main aims of every Greek group and of Panhellenic is good scholarship—scholarship that is gained honestly and with integrity.

. . . The fourth ideal is a cooperative spirit.

Each sorority member has a responsibility to her group besides holding up its ideals and standards. Always have a spirit of cooperation, for that spirit is the underlying factor that unifies each group and gives it "togetherness."

These four tenets help insure sorority happiness.



TO YOUR PARENTS . . .

Dear Parents:

We are pleased your daughter has decided to become, or is seriously considering becoming, a student at Oregon State College. Naturally, we feel she has made a wise choice. We are further hoping, if she wishes to become a member of one of the Panhellenic groups on our campus, that she will so indicate at the earliest possible date.



The responsibility for choosing a sorority is, of course, a mutual one—the group chooses the girl, the girl chooses the group. Most prospective rushees who approach the period of rushing and pledging with an open mind find themselves, at the end of the rush period, happily pledged to a house suited to their own particular individuality.

Among the many aspects of being a sorority woman is that of finances—and it is probably a phase in which you as a parent may be even more interested than your daughter. Yes, it does cost a little additional to be a member of a sorority, but we feel that the additional social, cultural, and academic opportunities, and the close personal contacts enjoyed during college days, as well as the many life-long benefits that accrue, more than compensate for the little added expense.

On Page 10 of this booklet are listed average costs for pledging, initiation, and living-out fees. After the first year, costs for room, board, social, and building fees in a sorority are, in all cases, comparable to costs for living in a dormitory on this campus.

You will note only averages are listed. We did this because we feel if your daughter can afford a sorority she is able to afford the sorority she wishes—and because, over a period of 4 years, the total cost of belonging to one group or another varies only slightly.

We have individual cost sheets, however, for each house. During Rush or New Student Week you or your daughter may obtain the desired information concerning a particular sorority by contacting the Panhellenic Office, in Memorial Union 213.

Sincerely yours,

ELIZABETH FLOOD (Mrs. G. R.)
Executive Secretary
Collegiate Panhellenic

WHAT WE MEAN WHEN WE SAY . . .

PLEDGE . . .

A girl who has accepted the bid of a sorority and has participated in their pledge ceremony.

GREEK . . .

The name applied to all fraternity and sorority members.

HOUSE . . .

The sorority group as a whole or the chapter house.

CHAPTER . . .

The local group that is part of a national organization. It may be Alpha Chapter of Beta Beta Beta.

CAMPUS . . .

What you wear to the rush parties—skirt and sweater or blouse, and flats.

DRESSY . . .

What you wear to the preference parties—a good dress, heels, and hose.

PREFERENCES . . .

The houses you accept for your first, second, and third choice.

DATE CARDS . . .

An invitation from a house to their next rush party. You return it with the time you choose to go there.

BID . . .

The official invitation to become a pledge of a sorority.

RUSH PERIOD . . .

A series of parties where you visit the various houses and choose the one or ones you prefer.

SILENT PERIOD . . .

Starting from your arrival on the campus and continuing through the formal rush period, contact on campus between sorority women and rushers may not be made.

ACTIVE . . .

A girl who has completed her period of pledgeship and has been initiated into her sorority.

ALUMNAE . . .

Initiated sorority women who have graduated or withdrawn from college.

LEGACY . . .

A close relative of an alumna of a sorority. During rush week, legacies receive the same consideration as any rushee.

ARE THERE RULES? . . .

Yes—there are. During rushing all sorority women and rushees must adhere to the following list of rules and regulations. **Read them carefully** so you may understand the system better.

- ◆ During a formal rush period, no girl may be rushed who has not paid a registration fee and whose name does not appear on the rush list. All girls who wish to rush should have signed up and paid the rush fee before coming to school. A few will be accepted by 5:00 p.m. on Wednesday of New Student Week.
- ◆ No girl may be rushed:
 - a) who does not have a high school decile of 4, or
 - b) who does not have an accumulative college GPA of 2.00.
- ◆ There shall be a mass meeting of all rushesses to explain rushing rules and procedures prior to each formal rush period.
- ◆ Silent period begins New Student Week upon arrival in Corvallis. This will be in effect on and off campus until pledging. Silent period is one in which sorority members may wear pins and talk to rushesses, but no coke dates or meetings are allowed. Sorority girls may not go to dorms and may not telephone rushees. (If absolutely necessary, sisters of a girl in the house may be an exception.) If communication is necessary with a sorority member, contact the Panhellenic Office.
- ◆ No affiliated women, except identified Talons, Rookess Counselors, and residence hall sponsors without pins, may go into an independent living group or rushee's living group during silent period.
- ◆ Absolutely no form of rushing, other than specified parties, is to take place during rush periods.
- ◆ Themes, decorations, or favors (napkins, place cards, etc.) that are allowed at formal rush functions cannot be taken from the house.
- ◆ Beginning with the return to campus in the fall, the policy will be no double dating with rushees during silent period, and no getting of dates for rushees by affiliated women.
- ◆ During formal rushing, rushees are not to attend school functions with affiliated women.

RUSHING PROCEDURE . . .

Your rush schedule is on the next page. Perhaps it needs a little explaining.

Open House on Saturday consists of sixteen 10-minute parties. Sunday morning at the Panhellenic Office you pick up your date cards and choose **eight** houses where you wish to return.

Sunday afternoon and evening you go to those **eight** houses for one-half hour parties. Monday morning you again pick up your date cards and choose **four** to return to on Monday evening for 40-minute parties.

Tuesday morning you pick up your date cards and this time choose **three** houses to go to Tuesday evening for 40-minute parties. Wednesday you return to the Panhellenic Office and choose your first and second preferences.

These are hour parties: your second preference for 7:00 p.m.—your first preference for 8:15. After leaving your first preference house you go back to the Panhellenic Office and sign what is called a "preference card."

Thursday is the "Big Day." You pick up your bids at the Panhellenic Office and sign your pledge card. At that time you will be notified when your formal pledging will be.

Good luck to you—have fun—these parties are enjoyable!

RECOMMENDATIONS . . .

Recommendations for rushees are received by sororities from their alumnae. These recommendations have to be obtained before a girl can be pledged; therefore, it is to your advantage to sign up for rush during the summer. Some girls, when entering, **may** be allowed to sign up for rush during New Student Week. To avoid any disappointments, be safe—send your \$3 not later than September 1, 1956.

YOUR RUSH SCHEDULE

Sunday	Monday	Tuesday	Wednesday	Thursday	Friday	Saturday
Sept. 16	Sept. 17	Sept. 18	Sept. 19	Sept. 20	Sept. 21	Sept. 22
Think	about days	Rush—	3:30— General meeting in Home Economics Auditorium 5:00— Deadline for registration	Talk Rush—	about days	Open House 1:00-5:00 and 7:00-9:00 Campus dress
Sept. 23	Sept. 24	Sept. 25	Sept. 26	Sept. 27	Sept. 28	Sept. 29
Pick up date cards between 8:30-10:30 a.m. in Memorial Union Building*	Pick up date cards at 12:30 p.m. in Home Economics Building	Pick up date cards at 12:30 p.m. in Home Economics Building	Pick up date cards at 12:30 p.m. in Home Economics Building	Pick up bids at 6:45-7:15 a.m. in Memorial Union 212 Sign pledge cards	Happy Rush—	about days
1st Date Card	2d Date Card	3d Date Card	2d Preference	Pledging		
2:00-4:45 and 6:45-9:30 Campus dress	6:45-10:00 Campus dress	7:00-9:30 Campus dress	7:00-8:00 1st Preference 8:15-9:15 Dressy dress			

* Room to be designated by your counselor.

FINANCIALLY SPEAKING . . .

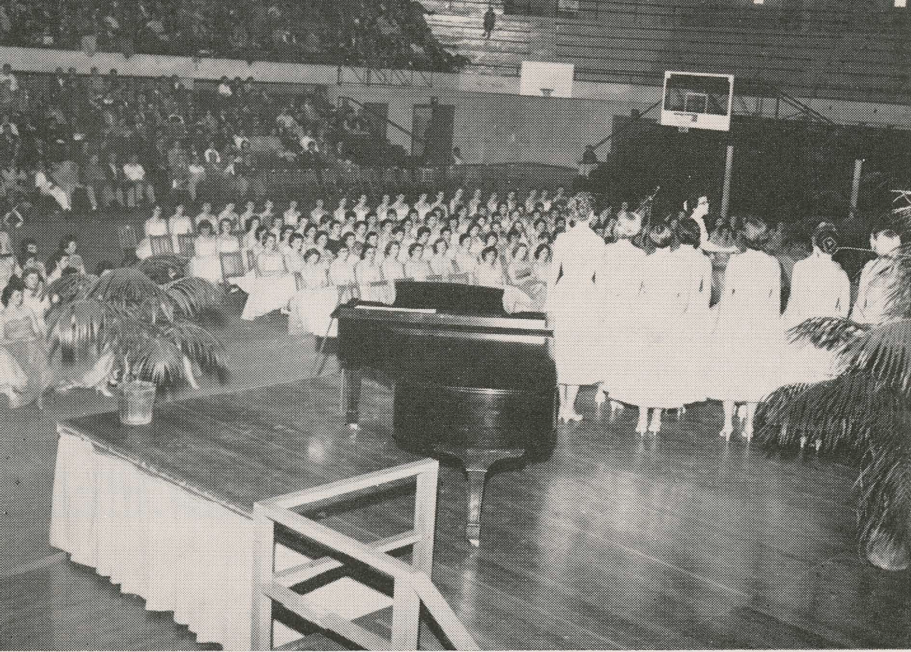
At Oregon State College—

The cost of living in a sorority house is comparable to living in a dormitory. Sorority expenses are divided into several categories and compiled in a monthly statement.

- \$ An average cost for room and board is \$67; for members and pledges living in, the range is from \$60 to \$77. Social dues are also included in the monthly board bill. They average \$2 and the range is from no charge to \$5.
- \$ In one of the campus dorms the average monthly cost for room and board is approximately \$62. Dorm bills are paid by the term and vary, depending on the dorm.
- \$ Other sorority fees paid during the first year include pledge and initiation fees. The average pledge fee is \$12, with the range from \$8 to \$15. Monthly fees for pledges and members living out range from \$7 to \$15, with the average at \$10.
- \$ The initiation fee ranges from \$40 to \$70. The higher fees usually include the sorority pin.
- \$ Most houses have some type of building fund with payments or a bond that averages about \$75 per member. The exact amount and procedure of paying varies with the individual house.

Sorority membership provides the basis for establishing meaningful lifelong friendships, an opportunity to participate actively in house and campus functions, and many other advantages found only in the closely-knit group relationship of sorority life.





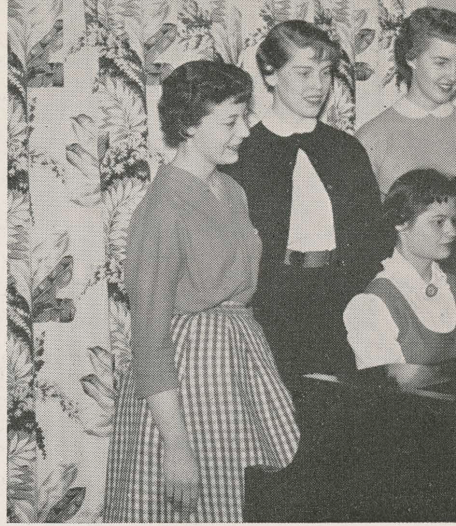
WHAT TO DO . . .

Here are some helpful hints for you. Read them carefully, they might prove advantageous:

- Read this handbook carefully from cover to cover. Refer to it often.
- Wear your name tag at all times, it prevents confusion.
- Attend all rush parties that you sign up for. If you get sick or can't attend, call the Panhellenic Office, not the sorority house.
- Read the rushing rules. Procedure will be a lot clearer if you do.
- Don't let anyone high-pressure you.
- Pay no attention to rumors. Find out the real facts.
- **Be on time** for the parties. Plan your dates carefully so your second house will be easily accessible from the first.
- Don't attend the parties in large groups. Go individually, or in groups of two or three.
- Above all, don't discuss your preferences with "the gang"—you might change your mind.

TO BE HAPPY . . .

Go into rush with an open mind. Don't come to college with your heart set on one certain sorority—it might not be the one for you. When you pledge, be sure you're pledging the house where you feel most at home.



REMEMBER . . .

During the rush parties, be yourself!

Oregon State College sorority women choose their members for what they are—not for what they try to be. In other words, the cost of your clothes or the men you date aren't among the standards of the sororities.

You are chosen on your womanliness, neatness, naturalness, and, most important, your friendliness.

GUIDEPOST TO A WISE CHOICE. . .

As in most cases where a decision must be made, much free advice will find its way to your ears, some of it helpful, but most of it only adding to the confusion in your already addled mind. What can you do about it? How can you pick out with certainty that sorority which rightly should be your college home?

From its long experience with rushing and pledging, Panhellenic sincerely advocates such a course as this: First take yourself off to some spot that by good fortune seems at the moment to be uninhabited, and hold the sororities in which you are interested up to scrutiny against your conception of an ideal fraternity. No one group will measure up 100 per cent, but the results should be enlightening.

Some of the guideposts Panhellenic has found most valuable to successful choice include the following:

- ▶ Choose a fraternity that offers you opportunities for enduring friendships. Do not be swayed by material possessions such as size, age, and monetary display, but choose a group in which you feel at ease.
- ▶ Choose a group whose members have wide and varied interests and who will expect you to keep up and cultivate friendships outside the group.
- ▶ Choose a group with which you feel you could work hard and congenially on the solution of its problems.
- ▶ Choose a group which thinks well of other groups and allows you to make up your own mind without using "high pressure salesmanship."
- ▶ Choose a group which, though it does not stress the value of the dollar, has enough business sense to be in sound financial condition.



TO GET HELP . . .

When problems arise and you are still in doubt about what to do, go to your group leader. Your group leaders are sorority women who have faced the same trials and tribulations you are having and take no part in individual rushing.

REMEMBER . . .

These women are your unbiased friends!

Group leaders are in the Panhellenic Office to help you clear up any questions you may have. They will keep anything you have to say strictly confidential, and will help you to the best of their ability. Go to the leaders for help instead of someone in the dorm—your group leaders are trained—you will find them most helpful.

THE QUOTA SYSTEM . . .

Each sorority is limited in its total membership and its total number of pledges per year by what is called a quota system.

Each year the Oregon State College Panhellenic establishes a new quota for sorority membership. The number of pledges allowed each chapter is determined by the total number of girls interested in sorority membership, the living capacity of individual sorority houses, and the number of members already living in the houses.

This quota-limitation system should not influence in any way your choice of a sorority. Five reasons for following such a system have been given by the National Panhellenic Council. The Oregon State College Panhellenic wants you to know about and understand these reasons:

- ▶ Confidence, that intimate group life, such as fraternities represent, can be a very constructive factor in the development of the individual and thus in the College's program.
- ▶ Belief that all National Fraternities represented on the campus are essentially the same in their fundamental ideals and therefore in their value to the individual and the College.
- ▶ Internal problems can be created by too large a group as well as by too small a group.
- ▶ A strong Panhellenic Association is possible only when all chapters are of similar size and strength.
- ▶ Size is not actually a criterion of strength, and the quota-limitation plan affirms the welfare of all chapters.

PANHELLENIC OFFICERS . . .

President Carol Ager
Secretary Brenda Saville
Treasurer Shirley Ezell
Executive Secretary Mrs. G. R. Flood
Advisor Dean of Women, Helen S. Moor

SORORITIES

Alpha Chi Omega

President Faythe Luther
Rush Chairman Ina Justice
Housemother Mrs. Francis Jones

Delta Gamma

President Bette Mannel
Rush Chairman Ann Munford
Housemother

Alpha Delta Pi

President Virginia Haynes
Rush Chairman Mary Rust
Housemother Mrs. F. J. Furman

Delta Zeta

President Janet McBurney
Rush Chairman Jean Holzmeyer
Housemother Mrs. Jean Avison

Alpha Gamma Delta

President Karolyn Willie
Rush Chairman Lorna Martel
Housemother Mrs. Ann Morrison

Gamma Phi Beta

President Glenna Hall
Rush Chairman Judy Wade
Housemother Mrs. Edna Brooks

Alpha Omicron Pi

President Carla Norman
Rush Chairman Lenore King
Housemother Mrs. Elva Sloanaker

Kappa Alpha Theta

President Lucy Baker
Rush Chairman Marianne Leaf
Housemother Mrs. E. H. Higbee

Alpha Phi

President Jone Jochums
Rush Chairman Gayle Ferguson
Housemother Mrs. Rena Sater

Kappa Delta

President Kathleen Woodside
Rush Chairman Susan Wood
Housemother Mrs. Ella M. Strand

Alpha Xi Delta

President Dorothy Reynolds
Rush Chairman Gloria Johnson
Housemother Mrs. Jennie Stewart

Kappa Kappa Gamma

President Barbara Exley
Rush Chairman Sue Gilbaugh
Housemother Mrs. Jessie M. Kinnie

Chi Omega

President Janet Crosby
Rush Chairman Maurine Snyder
Housemother Mrs. Inez Parker

Pi Beta Phi

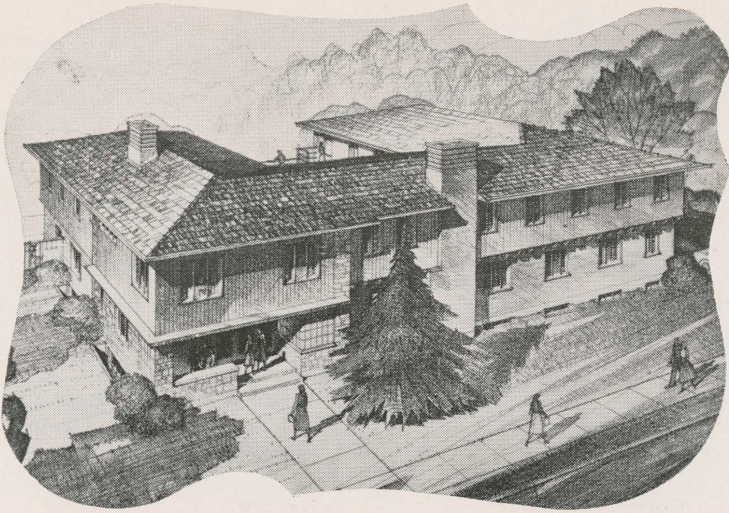
President Claudia Waters
Rush Chairman Roz Summers
Housemother

Delta Delta Delta

President Jane Phillips
Rush Chairman Nan Steele
Housemother Mrs. Ellen Koch

Sigma Kappa

President Helen Hume
Rush Chairman Sally Lane
Housemother Mrs. Beulah Barnwell



Alpha Chi Omega

310 N. 26th

Colors: Scarlet and Olive-Green



Alpha Delta Pi

350 N. 23d

Colors: Blue and White

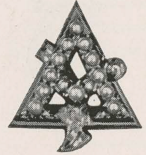




Alpha Gamma Delta

26th and Harrison

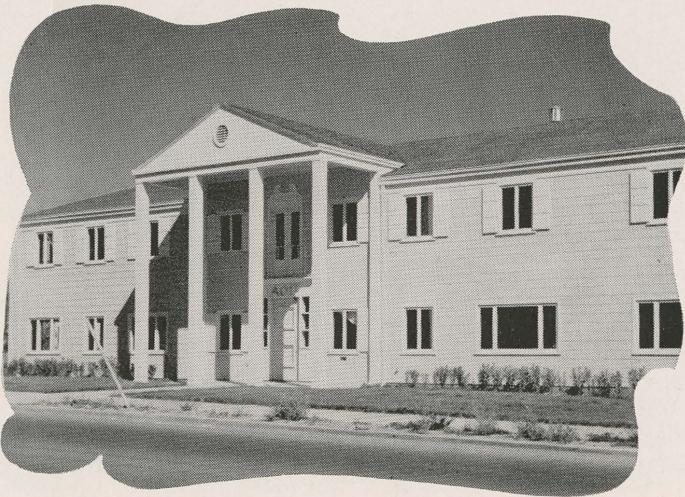
Colors: Red, Buff, and Green

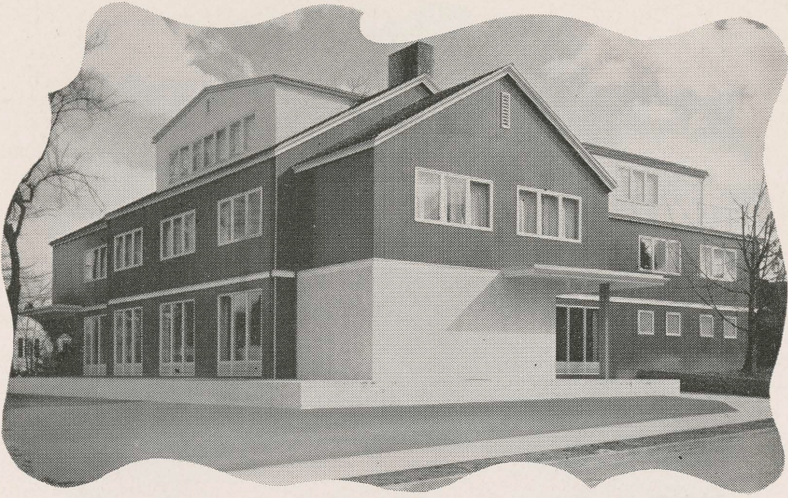


Alpha Omicron Pi

25th and Harrison

Colors: Cardinal





Alpha Phi

357 N. 25th

Colors: Bordeaux and Silver Grey

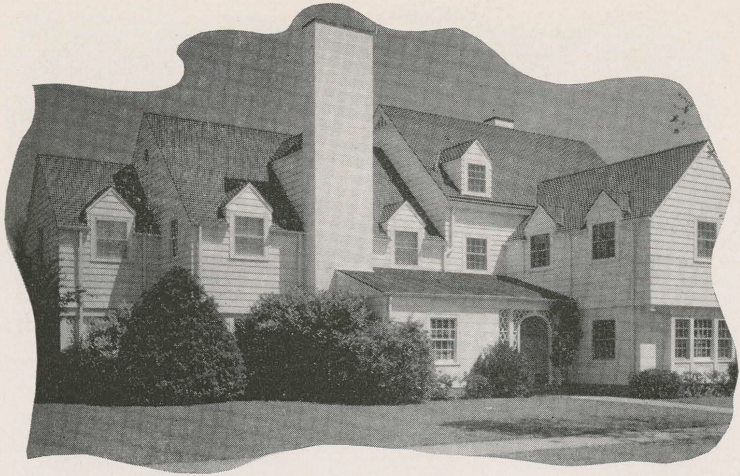


Alpha Xi Delta

330 N. 23d

Colors: Light Blue, Dark Blue, and Gold





Chi Omega

2857 Van Buren

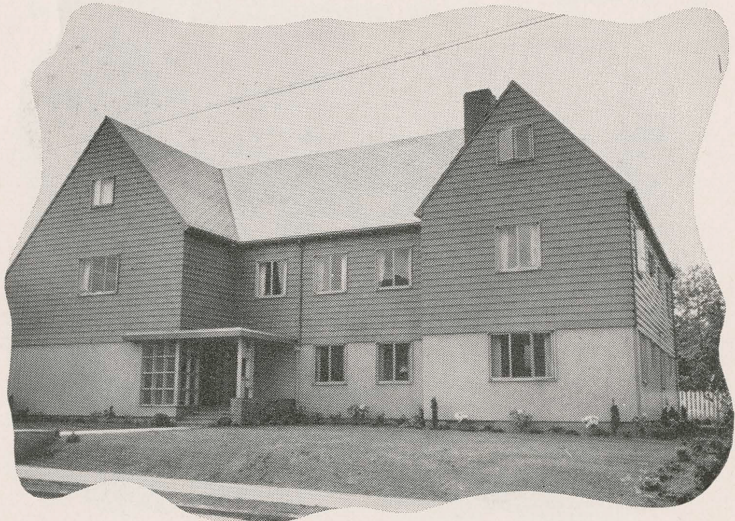
Colors: Cardinal and Straw

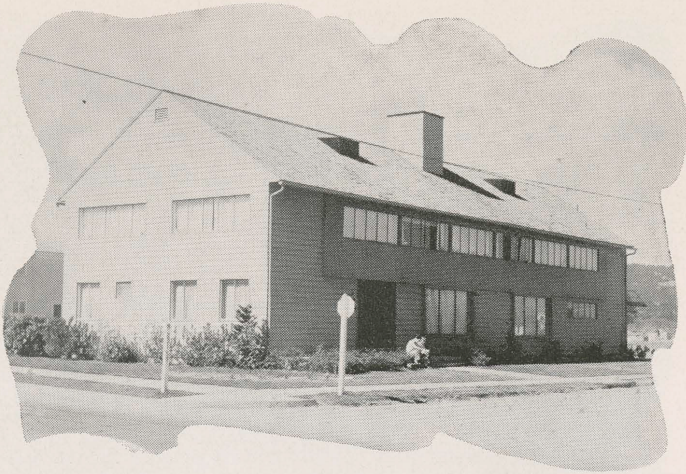


Delta Delta Delta

340 N. 26th

Colors: Silver, Gold, and Blue





Delta Gamma

23d and Harrison

Colors: Bronze, Pink, and Blue



Delta Zeta

23d and Van Buren

Colors: Old Rose and Vieux Green





Gamma Phi Beta

8th and Jefferson

Colors: Brown and Mode

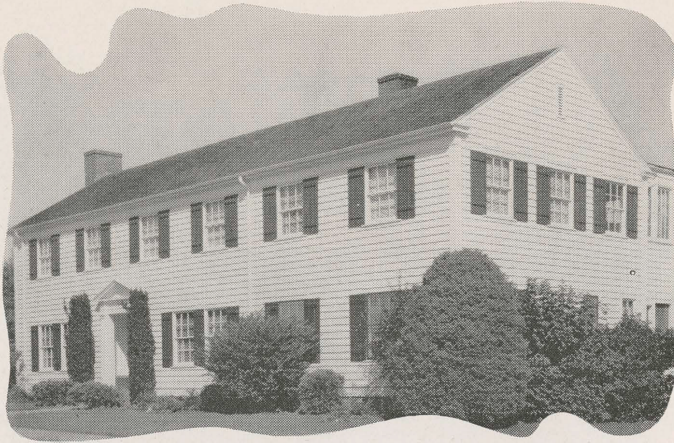


Kappa Alpha Theta

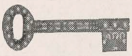
145 N. 21st

Colors: Black and Gold



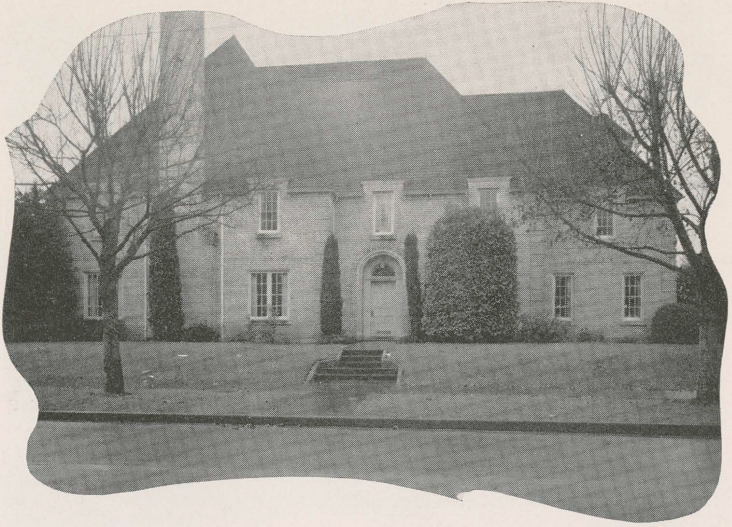


Kappa Delta
2461 Van Buren
Colors: Green and White



Kappa Kappa Gamma
13th and Van Buren
Colors: Light Blue and Dark Blue





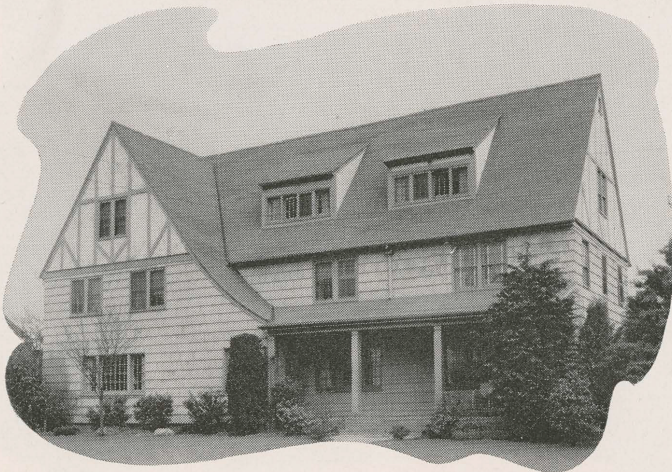
Pi Beta Phi

30th and Harrison
Colors: Wine and Blue



Sigma Kappa

231 N. 26th
Colors: Lavender and Maroon



KNOW YOUR GREEK . . .

Names and Pronunciation

A

ALPHA
al-fah

B

BETA
bay-tah

Γ

GAMMA
gam-ah

Δ

DELTA
del-tah

E

EPSILON
ep-si-lon

Z

ZETA
zay-tah

H

ETA
ay-tah

Θ

THETA
thay-tah

I

IOTA
eye-o-tah

K

KAPPA
cap-ah

Λ

LAMBDA
lamb-dah

M

MU
mew

N

NU
new

Ξ

XI
zzEYE

O

OMICRON
omm-e-cron

Π

PI
pie

P

RHO
roe

Σ

SIGMA
sig-mah

T

TAU
taw

Υ

UPSILON
oop-si-lon

Φ

PHI
fie

Χ

CHI
keye

Ψ

PSI
sigh

Ω

OMEGA
o-may-gah

YOUR SCHEDULE . . .

Just jot down here what houses you have accepted.

1st Date Card—Sunday

2:00-2:30

2:45-3:15

3:30-4:00

4:15-4:45

6:45-7:15

7:30-8:00

8:15-8:45

9:00-9:30

2d Date Card—Monday

6:45-7:25

7:40-8:20

8:35-9:15

9:30-10:10

3d Date Card—Tuesday

7:00-7:40

7:55-8:35

8:50-9:30

2d Preference—Wednesday

7:00-8:00

1st Preference—Wednesday

8:15-9:15

Think it
over

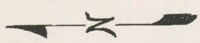
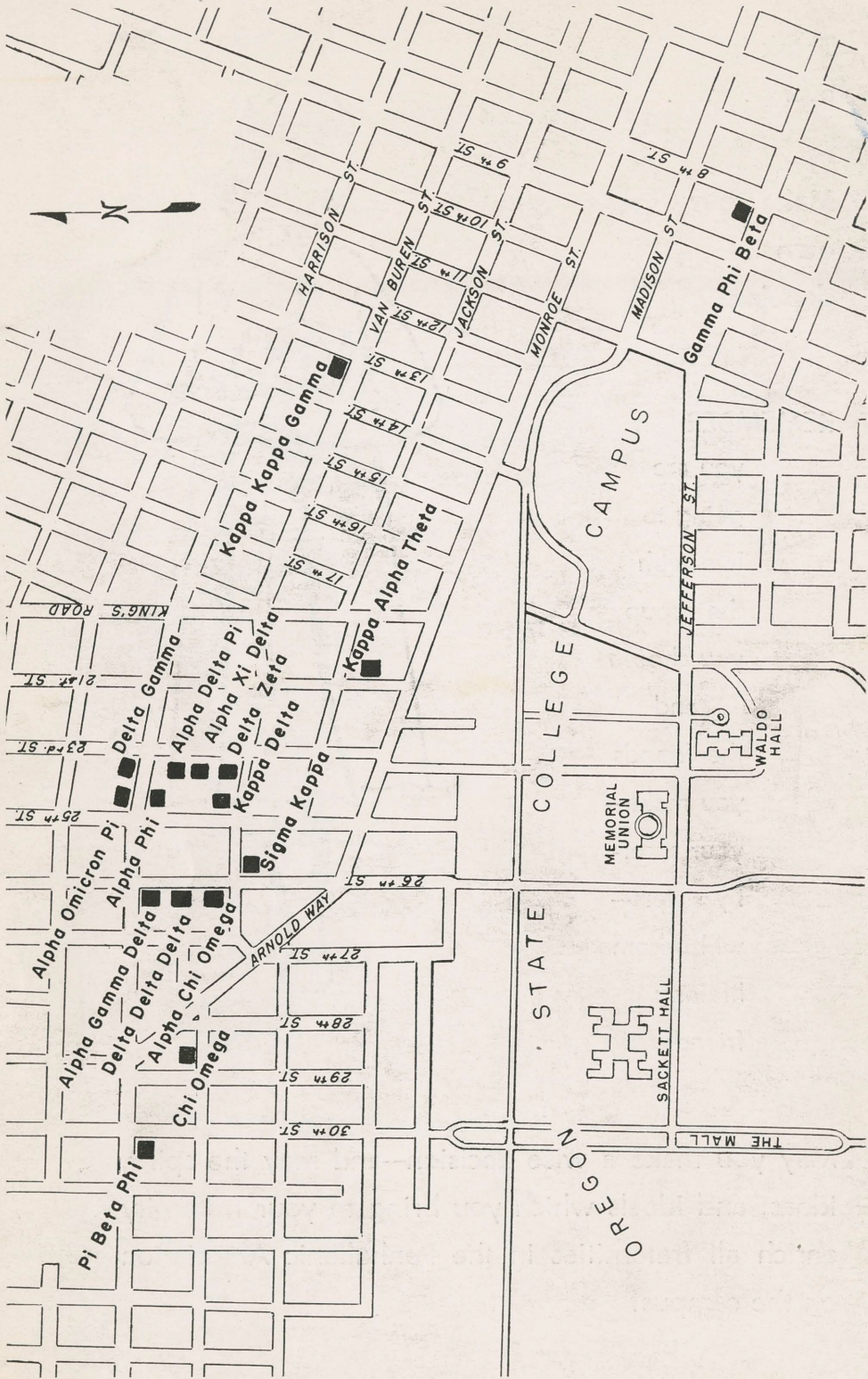
**Make your
own
decision!**

REMEMBER:

you are
going to
live with
the group
you choose
and
the friends
you make—
your soror-
ity sisters—
will become
lifelong
friends.



May you make a wise decision—and may the spirit,
ideas, and ideals which you bring to your fraternity
enrich all fraternities in the Panhellenic Association
on the campus!



Pi Beta Phi

Alpha Gamma Delta
Delta Delta Delta
Alpha Chi Omega

Chi Omega

Alpha Phi

Delta Gamma
Alpha Delta Pi
Alpha Xi Delta
Delta Zeta
Kappa Delta

Sigma Kappa

Kappa Kappa Gamma

Kappa Alpha Theta

Gamma Phi Beta

CAMPUS

COLLEGE

STATE

OREGON

SACKETT HALL

MEMORIAL UNION

WALDO HALL

THE MALL

JEFFERSON ST.

MADISON ST.

MONROE ST.

JACKSON ST.

11th ST.

12th ST.

13th ST.

14th ST.

15th ST.

16th ST.

17th ST.

18th ST.

19th ST.

20th ST.

KING'S ROAD

21st ST.

23rd ST.

25th ST.

26th ST.

27th ST.

28th ST.

29th ST.

30th ST.

ARNOLD WAY

Alpha Omicron Pi