



ALPHA CHI OMEGA



DELTA GAMMA



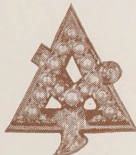
ALPHA DELTA PI



DELTA ZETA



GAMMA PHI BETA



ALPHA GAMMA DELTA



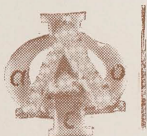
KAPPA ALPHA THETA



ALPHA OMICRON PI



KAPPA DELTA



ALPHA PHI



KAPPA KAPPA GAMMA



ALPHA XI DELTA



PI BETA PHI



CHI OMEGA



SIGMA KAPPA



DELTA DELTA DELTA



ZETA TAU ALPHA







HISE
62

Oregon State University Panhellenic Presents

SORORITY RUSHING and YOU

Edited by..... Sandy Burns
Carolyn Pasley
Carol Minton

Cover by..... Joann Bye

PANHELLENIC OFFICE
213 Memorial Union,
Oregon State University
Corvallis, Oregon

Table of Contents

Title Page.....	1
The Panhellenic Creed.....	3
Panhellenic President's Letter.....	4
Executive Secretary's Letter.....	5
Why Join a Sorority?.....	6
What Is Panhellenic?.....	7
What Is Rush Week?.....	7
Reminders.....	8
Rush Week Summary.....	9
Guideposts to a Wise Choice.....	10
The Quota-Limitation System.....	10
Financial Obligations.....	11
When You Arrive.....	11
Helpful Hints.....	12
What We Mean When We Say.....	13
Rushing Rules.....	15
Initiation Requirements.....	17
Remember.....	18
Panhellenic Officers.....	18
House Pictures.....	19
Pin Pictures.....	Front Cover Flap
Greek Alphabet.....	Inside Back Cover
Campus Map.....	Back Cover

The Panhellenic Creed

Adopted 1915

WE, THE FRATERNITY UNDERGRADUATE MEMBERS, stand for good scholarship, for guarding of good health, for wholehearted cooperation with our college's ideals for student life, for the maintenance of fine standards, and for the serving to the best of our ability, of our college community. Good college citizenship as a preparation for good citizenship in the larger world of alumnae days is the ideal that shall guide our chapter activities.

WE, THE FRATERNITY ALUMNAE MEMBERS, stand for an active, sympathetic interest in the life of our undergraduate sisters, for loyal support of the ideals of our Alma Mater, for the encouragement of high scholarship, for the maintenance of healthful physical conditions in chapter house and dormitory, and for using our influence to further the best standards for the education of the young women of America. Loyal service to chapter, college, and community is the ideal that shall guide our fraternity activities.

WE, THE FRATERNITY OFFICERS, stand for loyal and earnest work for the realization of these fraternity standards. Cooperation for maintenance of fraternity life in harmony with its best possibilities is the ideal that shall guide our fraternity activities.

WE, THE FRATERNITY WOMEN OF AMERICA, stand for preparation for service through the character building inspired in the close contact and deep friendship of fraternity life. To us, fraternity life is not the enjoyment of special privileges but an opportunity to prepare for wide and wise human service.

Dear Miss Rushee:

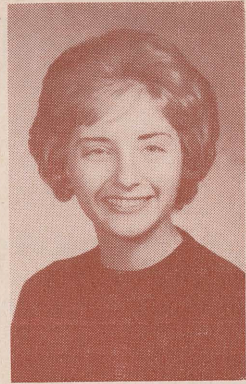
Hi! Welcome to the Oregon State University campus and to Panhellenic fall rushing activities.

The time is approaching when you will begin a most rewarding experience—your college education. To attend a college or university is a great privilege and responsibility, and it extends to every student a variety of opportunities. Your first opportunity is to make the most of your academic pursuit, and a second one is the chance to select your living area; that is, residence hall, cooperative, or sorority living. This is your choice—one based on which type you feel will make you happiest, offer you the most, and to which you feel you can make the greatest contribution.

There are seventeen national sororities on this campus, each working for the common goals of all—scholarship, cooperation, good health, maintenance of high standards, and individual achievement.

You have a very exciting week ahead of you, but it will be one filled with some difficult decisions. Just remember that there are a number of groups from which to choose, and that it is you who will be sharing your four years of college life with a particular group.

If you have any questions or problems concerning rush, please do not hesitate to contact the Panhellenic office. The Panhellenic officers are looking forward to meeting you and are always available to help you in every way.



Sincerely,

Mary Settergren

Panhellenic President

Dear Parents:

We are happy to know that your daughter is considering becoming a student at Oregon State University. Naturally we feel that OSU is an excellent choice and offers outstanding curricula, social opportunities, and life-long friendships.

The responsibility for choosing a sorority is, of course, a mutual one—the group chooses the girl and the girl chooses the group. A prospective rushee who approaches the period of rushing and pledging with an open mind finds herself, at the end of rush, happily pledged to a sorority suited to her own individuality.



You, as parents, are interested, I am sure, in the financial obligation involved in being a sorority member. Yes, it does cost additional money to join a sorority, but we feel that the additional opportunities and the personal contacts enjoyed during college days, as well as the many life-long benefits that accrue, more than compensate for the little added expense. Alumnae supervision in all areas of sorority living increases the caliber and performance of each chapter.

Pledge, initiation, and monthly living-out fees are shown on page 11. After the first year, the cost of room, board, social and building fees in a sorority, in all cases, is only slightly higher than the cost of living in a dormitory on this campus. The Panhellenic office has a detailed cost sheet available to your daughter during rush. If you desire one earlier, it will be sent to you upon request.

*If your daughter is interested in becoming a member of a Panhellenic group on our campus, please urge her to so indicate on her rush registration card at the **EARLIEST POSSIBLE DATE**.*

Upon receipt of her rush registration card the rushee's name, address, high school, and G.P.A. are placed upon the Oregon

State rush list. A copy of this list is sent to each sorority's rush chairman, alumnae advisors, and local alumnae living in the rushee's area. This procedure makes it possible for recommendations to be sent by alumnae of each group. These recommendations are required for pledging by all sororities.

Sincerely yours,

Eleanor Pfanner (Mrs. J. A.)

Executive Secretary, Panhellenic

Why Join a Sorority?

Sororities stand for a richer understanding of college life. When you pledge, you will find that you will become one of forty to seventy girls sharing common interests. You will no longer be working alone, but through cooperation you will be sharing your college experiences with other members. When you need help, you will have sympathetic understanding, and when you receive an honor, you will have fifty other girls sharing your happiness. The friends you make in college will be your dearest and truest, and they will last long after college days are over. When you visit other cities, you will have a bond of friendship, before a word is spoken, because of the pin you are wearing. There is a common bond between all fraternity women who are striving toward a richer and fuller womanhood.

Each sorority stresses scholarship and outside interests. You will want to remember this and keep your grades high because that is your part in helping the sorority run smoothly. College is enriched by campus activities, and although everyone can't be interested in doing everything, you will find something that will appeal to you and make your college life fuller and more meaningful.

Each girl in the sorority is a hostess at all times in her campus home. You will learn new social life — and being a member will help you realize this wonderful plan for your later life. And it will help if one remembers that an invitation to membership in a sorority is a two-way proposition. In addition to

the groups the rushee may want, she must consider what groups want her. It is the same principle as marriage; it is whom you want AND who wants you.

What Is Panhellenic?

National fraternities for women, generally called sororities, are a recognized, long established, and important part of college life on many campuses.

Panhellenic is the organization that governs the inner working of rushing and sororities. The name "Panhellenic" is derived from the Greek roots, "Pan," meaning "all"; "Hellenic" meaning "Greek". Panhellenic therefore is an organization of all-Greek women.

As soon as you pledge a sorority, you become a member of Panhellenic. Until you pledge and while you are a rushee, Panhellenic will give to you all necessary information on all sororities, and will answer all personal problems which arise during Rush Week. Contact the Panhellenic office in the Memorial Union as soon as you have a question to ask. It is here, and not from the other freshmen in the dorms, that you will get the correct answer. Panhellenic workers are impartial authorities on what to do and how to do it.

You are not alone, Miss Rushee of '63. Panhellenic is your friend. Read on in this booklet for details about rush.

What Is Rush Week?

Rush week is a period during which Greek women entertain potential sorority women, or "rushees," in the hope that they will get to know many rushees personally, and that the rushees will become acquainted with them and with their sororities.

It is the desire of Panhellenic, and of each individual member of the sororities, that each girl who is interested in belonging to a sorority shall find the niche that fits her personal needs.

When rushees, as guests, go through rushing, they see only the gay side of sorority life. To be sure, sororities have their gay side, but there is seriousness and responsibility involved in being a good sorority pledge or member.

During the rushing period, the members of each sorority will be talking enthusiastically about their own group. They do not do this because of disregard for other groups, but because they are in a position to give information only about their own. If at any time you want unbiased official information, go to the Panhellenic Executive in the Panhellenic office and she will try to help you.

Regulations concerning rushing are formulated and agreed upon by Panhellenic, and all sorority women are familiar with them. All these specific rules and regulations are laid down by Panhellenic in order that each rushee will be able to make her own decision when the time comes for signing of pledge cards.

Reminders

1. If you have not already mailed in your Panhellenic rush registration card, your check or money order for \$20.00, made payable to Oregon State University, you should do so immediately. Room and board for rush week is \$15.00 and the rush fee is \$5.00 (total fee \$20.00). Send to Panhellenic Council, Memorial Union 213, Oregon State University, Corvallis, Oregon.
2. Your room and board fee is for rush days only and does not include day of testing.
3. Housing for upper class pledges in some sororities is very restricted and some chapters may not be able to house their upper class pledges until a vacancy occurs in the chapter house.
4. Payment of rush registration fees and dormitory deposit does not signify admission to Oregon State University. Please notify Office of Admissions, Oregon State University, Corvallis, Oregon, if you do not receive a confirmation of admission. You must be officially admitted in order to rush. Deadline for rush registration is August 31, 1963.
5. Late registration fee is \$10.00.

6. If, for some unavoidable reason such as illness, you are unable to come for rush, your room and board fee will be refundable up to September 17, 1963, and the Panhellenic fee is refundable through August 31, 1963.

Rush Week Summary

Wednesday, September 18

9:00 a.m.—Dorms open for women rushees

5:30 p.m.—Dinner at dorms

8:00 p.m.—Mass meeting of rushees

Home Economics Auditorium

Thursday, September 19

8:00 a.m.—5:00 p.m.—Faculty advising of women rushees

5:30 p.m.—Dinner at dorms

6:40 p.m.—10:30 p.m.—Eight rush parties, 20 minutes each
—campus dress

Friday, September 20

8:30 a.m.—3:00 p.m.—Ten rush parties, 20 minutes each—
campus dress

Saturday, September 21

9:30 a.m.—4:50 p.m.—Nine rush parties, ½ hour each—
campus dress

Sunday, September 22

Church of your choice

11:00 a.m.—12:50 p.m.—Two rush parties

1:00 p.m.—2:00 p.m.—Sunday dinner

2:30 p.m.—6:20 p.m.—Four rush parties

Rush parties, 50 minutes each—campus dress

Monday, September 23

Preference Parties

1:45 p.m.—5:15 p.m.—Three afternoon rush dates, 1 hour
each—dressy—heels

Tuesday, September 24

Pick up bids 11:30 a.m.

12:00 Pledge luncheon at Your Sorority—Ribbon pledging—
dressy—heels

You will be given a more detailed, more comprehensive
schedule at the mass meeting, Wednesday, September 18, at
8:00 p.m.

Guideposts to a Wise Choice

As in most cases where a decision must be made, much free advice will find its way to your ears, some of it helpful, but most of it only adding to your confusion. What can you do about this situation? How can you pick out with certainty and an open mind the sorority which will provide a happy college home?

Some of the guideposts Panhellenic has found most valuable to a successful choice include the following:

- Choose a fraternity that offers you opportunities for enduring friendships. Do not be swayed by material possessions, a new sorority house, pictures, or other outward displays. Choose a group with which you feel at ease.
- Choose a group in which you feel you will work hard and congenially on the solution of its problems.
- Choose a group which makes you think highly of other groups and allows you to make up your own mind. Do not fall for high pressure salesmanship.

The Quota-Limitation System

Each sorority is limited in its total membership and in its total number of pledges per year by what is called a quota-limitation system.

Each year the Oregon State University Panhellenic establishes a new pledge quota for sorority membership. The number of pledges allowed each chapter is determined by the total number of girls interested in sorority membership.

This quota-limitation system should not influence in any way your choice of a sorority. Three reasons for following such a system have been given by the National Panhellenic Conference. The Oregon State University Panhellenic wants you to know and understand these reasons.

- Internal problems can be created by too large a group as well as by too small a group.

- A strong Panhellenic is possible only when all chapters are of similar size and strength.
- Size is not actually a criterion of strength, and the quota-limitation system affirms the welfare of all chapters.

Financial Obligations

At Oregon State University—

Sorority expenses are divided into various categories and compiled in a monthly statement. All the sororities receive expert financial supervision by employed professional accountants or experienced alumnae who function in the capacity of financial advisors to the chapters. Detailed financial statements are presented to the parents of new members at the time of pledging and the advisors welcome consultation with the parents at any time.

Sorority fees paid during the first year include:

- a. monthly pledge cost including building fund, social fee, certain specified meals, and other miscellaneous expenses—range \$15 to \$20, average \$16;
- b. original pledge fee—range \$10 to \$20, average \$15;
- c. initiation fee—range \$55 to \$80, average \$70 (includes pin).

For members and pledges living in the sorority house, the average all-inclusive cost for room and board is \$90 per month. This figure includes social fees.

When You Arrive

When you arrive on campus, Wednesday, September 18, 1963, report to Sackett, Snell, West, Hawley or Buxton dormitory where you will be assigned to your room. The dormitories will be open on Tuesday for those rushees needing to take College Boards. All rushees will be advised on Thursday, September 19th, and may arrive after 9 a.m., Wednesday, September 18th. Dinner will be served at 5:30.

You will have time to unpack, meet your new roommates, and rest before the general meeting for all rushees in the Home Economics Auditorium at 8 p.m. The complete rushing schedule will be explained to you at that time.

Living with you in the dormitory will be a Panhellenic counselor. She has been selected by her living group as a Panhellenic delegate to act as an impartial counselor for rushees during Rush Week. She will be available at all times throughout Rush Week to help you find solutions to your problems and to help you become adjusted to life at OSU. A Panhellenic counselor is also your group leader, and will be with you some specified time each day.

The Panhellenic office will be at your disposal also, should you wish to consult with the officers or the Executive Secretary there.

For any rush information you may desire, be sure to contact any of the willing Panhellenic counselors. Their only Rush Week objective is to **HELP YOU FIND YOUR SORORITY.**

Helpful Hints

1. Read this handbook carefully from cover to cover. Refer to it often for answers to the questions that arise. Be sure to bring this booklet with you for rush.
2. Read the rushing rules and know them well.
3. Wear your Panhellenic name tag to all rush parties.
4. Attend all rush parties you sign up for. If you get sick and cannot attend, call the Panhellenic office, PLaza 2-4211, extension 580, NOT the sorority house.
5. Dress simply and in good taste. Remember most high fashion is simple.
6. Be on time. If you are late, do not apologize more than once.
7. Don't adopt a new personality for rush week. Your natural one is the one the sorority is interested in.
8. Don't make disparaging remarks about a sorority. You may be talking to a girl who is very interested in that sorority, or has a sister or mother as a member.

9. Don't discuss your preferences. Rush is a personal concern and your own decision.
10. Pay no attention to rumors. Find out the real facts by going to the Panhellenic office.
11. Don't let anyone high pressure you.
12. Above all, RELAX AND BE YOURSELF.

What We Mean When We Say . . .

PLEDGE—A girl who has accepted the bid of a sorority and has participated in their pledge ceremony.

GREEK—The name applied to all fraternity and sorority members. This name is used because their organizations identify themselves by Greek letters.

CHAPTER—The local group that is part of a national organization. It may be Alpha chapter of Beta Beta Beta.

CAMPUS—The type of dress worn to classes and rush parties . . . skirt and sweater or blouse, or cotton dress and flats.

DRESSY—The type of dress worn to evening parties during school and the dress worn to preference parties . . . a good dress, heels, hose and simple jewelry.

PREFERENCES—The sororities you put on the preference card as your first, second, and third choices. Panhellenic urges you to have three choices if at all possible.

IBM DATE CARDS—An invitation from a sorority to its next rush party.

BID—The official invitation to become a pledge of a sorority.

RUSH PERIOD—A series of parties where you visit the various sororities and choose the one or ones that you prefer.

RUSHING—Time and affairs that sororities set aside for gaining new members.

SILENT PERIOD—Starting from your arrival on campus and continuing through the formal rush period, contact with sorority women other than a scheduled rush party may not be made.

ACTIVE—A girl who has completed her period of pledgship and who has been initiated into her sorority.

ALUMNAE—Initiated sorority women who have graduated or who have withdrawn from college.

LEGACY—A close relative of an alumnae or a sorority girl. During rush week, legacies receive the same consideration as any rushee.

FORMAL RUSH—The period of rush which is scheduled through Panhellenic and where every rushee visits every sorority at least once. All rush parties are planned through Panhellenic.

INFORMAL (OPEN) RUSH—During the school year the sororities may invite rushees over for various types of rushing. More information concerning this type of rush is available at the Panhellenic Office.

GRADE POINT AVERAGE—A rating of high school grades based on the 4 point system. A 2.5 high school G.P.A. as evaluated by the O.S.U. Admissions Office is necessary for rushing. O.S.U. Admissions Office informs Panhellenic of rushee's admission G.P.A.

RIBBON PLEDGING—A ribbon of the sorority's colors is worn during the period elapsing between the time a rushee accepts the bid to pledge and the pledge ceremony held after official registration at Oregon State University.

ON CAMPUS—Within the boundaries of the property owned by the State of Oregon and which is used by Oregon State University. It is usually thought of as the area around the M.U. residence halls. Administration building, and the classroom buildings.

OFF CAMPUS—Any area not included in the OSU campus.

EXCHANGE—Dinner or dessert dates where a fraternity and sorority get together.

M.U.—The center of all campus activities is called the Memorial Union or the M.U.

AFFILIATED—Any student who is a pledge or a member of a Greek organization.

Rushing Rules

REVISED SPRING 1963

OREGON STATE UNIVERSITY PANHELLENIC FORMAL RUSH

1. During a formal rush period, no girl may be rushed who has not paid the registration fee and whose name does not appear on the rush list. All girls who wish to rush must have signed up and paid the rush fee before Saturday, August 31, 1963, unless late registration fee is paid.

2. A girl may be rushed:

- a. who has a 2.5 high school G.P.A., as evaluated by the O.S.U. Admissions Office*, or
- b. who has sophomore standing (36 credit hours or the equivalent on a two semester basis) with a 2.20 accumulative college G.P.A. and not on probation or,
- c. who has freshman standing with 14 hours of a 2.30 from the previous term and a 2.00 accumulative G.P.A.

3. There shall be a mass meeting of all rushees to explain rushing rules and procedures prior to each formal rush and each day at a specified time during the week to explain rushing rules and procedures.

4. Panhellenic with the approval of the Dean of Women's office, will set the quota and upper limitation during Spring term. These numbers may be changed in the fall if conditions warrant.

5. Silent period begins Rush Week upon arrival in Corvallis. This will be in effect on and off campus until ribbon pledging. Silent period is one in which sorority members may wear

•OSU Admission G.P.A. placed on rush list.

pins and talk in passing on campus to rushees, but no coke dates or meetings are allowed. Sorority members may not go to dormitories and may not telephone rushees. (If absolutely necessary a sister of a girl in a sorority may be an exception.) If communication is necessary with a rushee, contact the Panhellenic office PL. 2-4211, extension 580.

6. No affiliated women except officially selected Talons, dormitory sponsors and officers, and Panhellenic delegates and officers may, without pins or other fraternal identification, go into an independent living group during silent period.

7. Absolutely no form of rushing other than specified parties is to take place during rush periods.

8. Themes, decorations, or favors (napkins, place cards, etc.) that are allowed at formal rush functions cannot be taken from a sorority until formal rush period is ended.

9. Beginning with the return to campus in the fall, the policy will be no double dating with rushees during silent period, and no getting dates for unaffiliated women.

10. During formal rushing, rushees are not to attend any functions with affiliated women.

11. Only sorority members and pledges may present entertainment. (Houseboys may serve refreshments only.) Alums and actives from other chapters are considered members.

12. College chapters will be held responsible for any infringement of rushing rules by their respective alumnae groups and individual members.

13. Names of pledges at the end of formal pledging and informal pledging and names of initiates shall be released for publication only by the Panhellenic office.

14. There shall be no "hot boxing" permitted during any Panhellenic rush period, formal or informal. "Hot boxing" shall be defined as the pressuring of a rushee through any individual or group conference as conducted by one or more

members of a sorority for the purpose of promoting or degrading of a specific sorority during rush.

15. No cards or letters may be sent to a potential rushee from a sorority unless designated and approved by Panhellenic.

16. Any infraction of these rules should be reported with specific information, including the names of the persons involved in the offense in writing, within one week of discovery to the Panhellenic office and will be dealt with by the Judiciary Committee.

INFORMAL (Open) RUSH

1. Any girl who is eligible for pledging is eligible for open rush.

2. Grade requirements are the same as for formal rush.

3. No girl is eligible to rush if she has broken or has had her pledgeship broken by a sorority within a year from the date of broken affiliation.

4. A ceiling once reached makes a sorority ineligible for further rushing during the school year unless Panhellenic Council takes action to the contrary.

5. A rushee must pay her rush registration fee at the time her pledge slip is turned into the Panhellenic Office if she has not paid a rush fee during formal rush.

6. Lists of girls pledged during informal rush shall be released by the Panhellenic Office following each term rush period.

Initiation Requirements

Uniform initiation requirements for all sororities shall be 14 hours of credit with a minimum grade point of 2.30 for the previous term and not on academic probation.

If a girl is required to take a course for which she will receive no credit, and she is advised to take it during the first or second term at OSU, these hours will be counted towards initiation.

Remember

Panhellenic wishes to express its appreciation for your participation in rush. We hope that you will decide to join a sorority and that your experience as a sorority woman will be endlessly rewarding. If, however, you decide not to pledge a sorority at this time we know that you will look upon rush as an invaluable experience for you will continue the friendships which began at this time through work in campus activities and the classroom.

If you decide not to pledge a sorority at this time, you may be interested in Informal Rush. Informal Rush begins immediately following the closure of Formal Rush and continues throughout the school year. For information contact the Panhellenic Office.

Panhellenic Officers

President.....	Mary Settergren
1st Vice President.....	Betty Wakefield
2nd Vice President.....	Robin Holmes
Secretary.....	Pat Ritchie
Treasurer.....	Doreen Forslund
Summer Secretary.....	Loyce Karns
Executive Secretary.....	Mrs. John Pfanner, Jr.*
Adviser.....	Helen S. Moor, Dean of Women

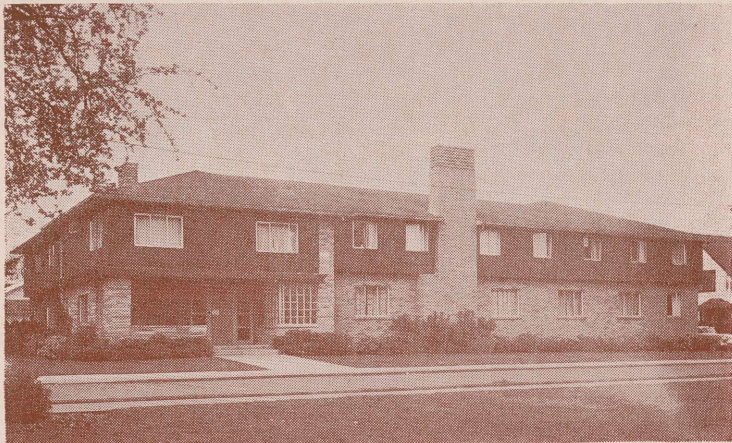
* If at any time during the school year you want to discuss a Panhellenic problem with the Executive Secretary, you may call her at home and make an appointment with her. The Executive Secretary is in the Panhellenic Office, M.U. 213, on appointment and from 12:30 p.m. to 3:00 on Wednesday. Phone number for M.U. Panhellenic office is PL. 2-4211, Ext. 580. Mrs. Pfanner's home phone is PL. 3-3679.

PANHELLENIC FOREIGN STUDENTS

Panhellenic each year provides a scholarship which includes room and board to a foreign student. Panhellenic has had a student from Japan, Iraq, Turkey, China, and Sweden. This year a student from Greece will be at O.S.U.

ALPHA CHI OMEGA

"Alpha Chi's"



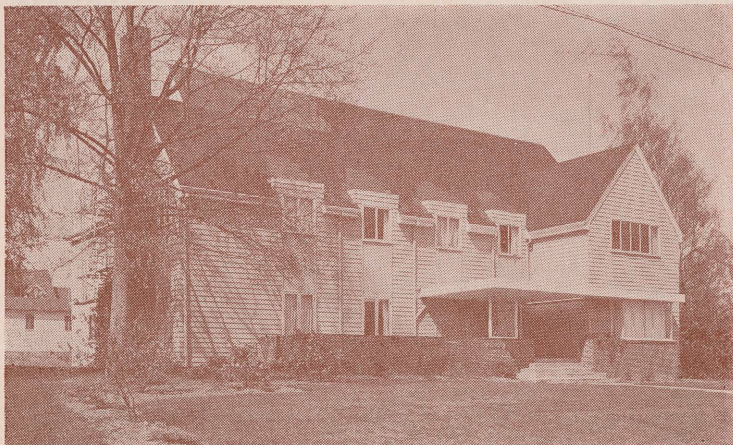
310 North 26th Street

President—Jimi Minty

Rush Chairman—Jo Morast

ALPHA DELTA PI

"A D Pi's"



350 North 23rd Street

President—Becky Chartrey

Rush Chairman—Nelda Williams

ALPHA GAMMA DELTA

"Alpha Gam's"



360 North 26th Street

President—Janet Campbell

Rush Chairman—Shirley Haftorson

ALPHA OMICRON PI

"A O Pi's"



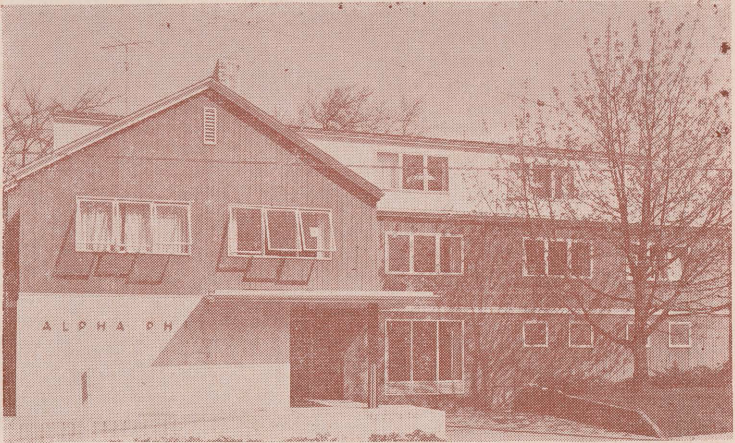
2435 Harrison Street

President—Madi Smith

Rush Chairman—Lorna Roe

ALPHA PHI

“Alpha Phi’s”



357 North 25th Street

President—Judy Saunders

Rush -Chairman—Sue Wallace

ALPHA XI DELTA

“Alpha Xi’s”



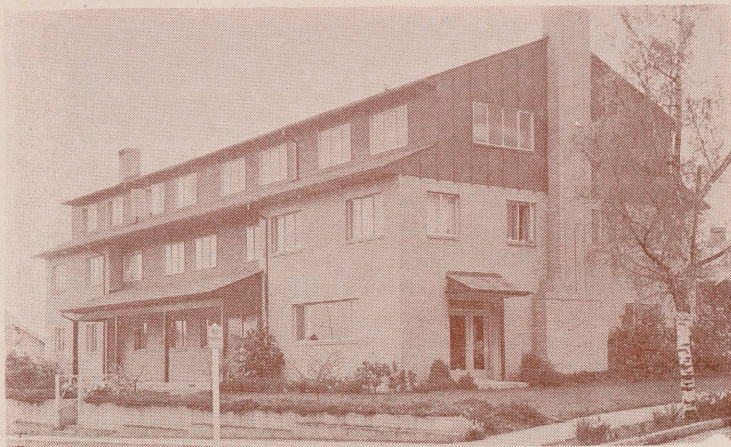
330 North 23rd Street

President—Teddie Toedtemeier

Rush Chairman—Judy Healy

CHI OMEGA

"Chi O's"



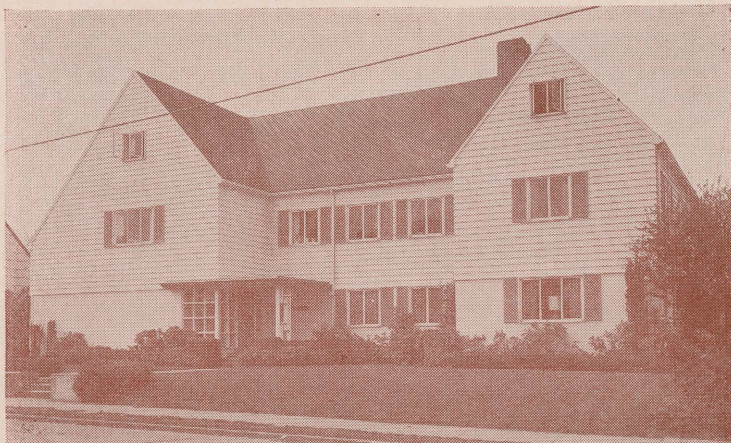
2240 Van Buren Street

President—Joann Bye

Rush Chairman—Susan Allen

DELTA DELTA DELTA

"Tri Delt's"



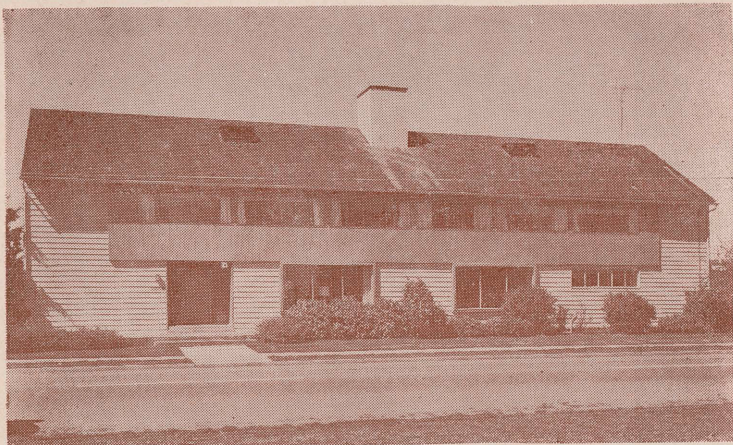
340 North 26th Street

President—Ann Jendrzejewski

Rush Chairmen—Dee Copley, Shiry Eaton

DELTA GAMMA

"DG's"



404 North 23rd Street

President—Heather Wilson

Rush Chairman—Elaine Beiswenger

DELTA ZETA

"DZ's"



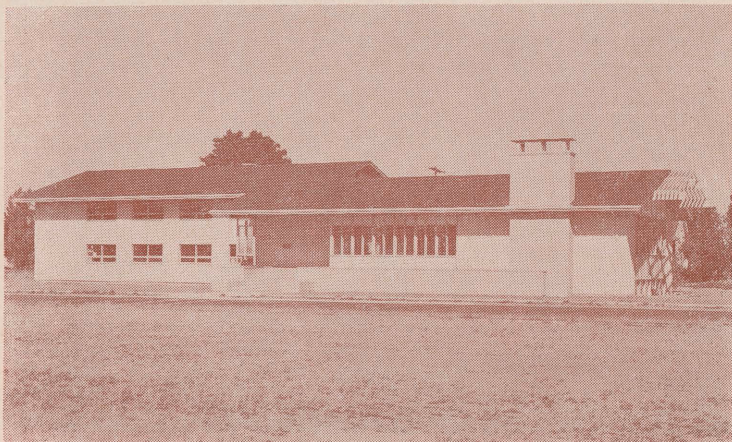
2311 Van Buren Street

President—Maryellen Warner

Rush Chairman—Gail Zielesch

GAMMA PHI BETA

“Gamma Phi’s”



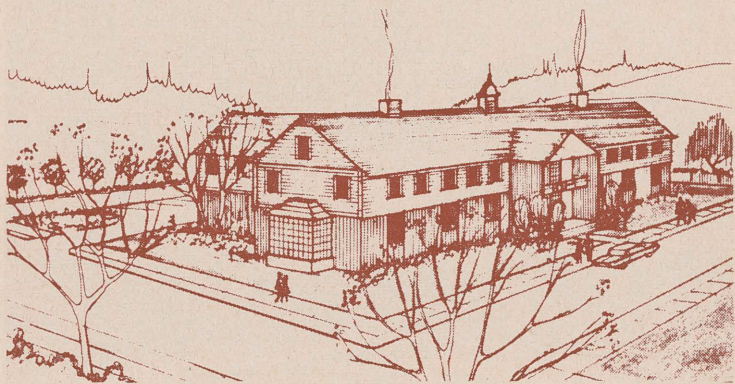
645 North 23rd Street

President—Becky Redding

Rush Chairmen—Betty Yundt, Karen Carson

KAPPA ALPHA THETA

“Theta’s”



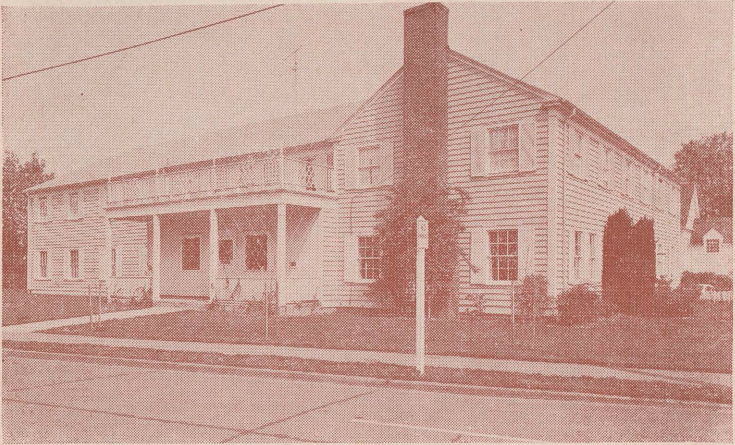
456 North 23rd Street

President—Sue McQuaid

Rush Chairman—Carol Robb

KAPPA DELTA

"KD's"



305 North 25th Street

President—Nancy Brobst

Rush Chairman—Carol Lindley

KAPPA KAPPA GAMMA

"Kappa's"



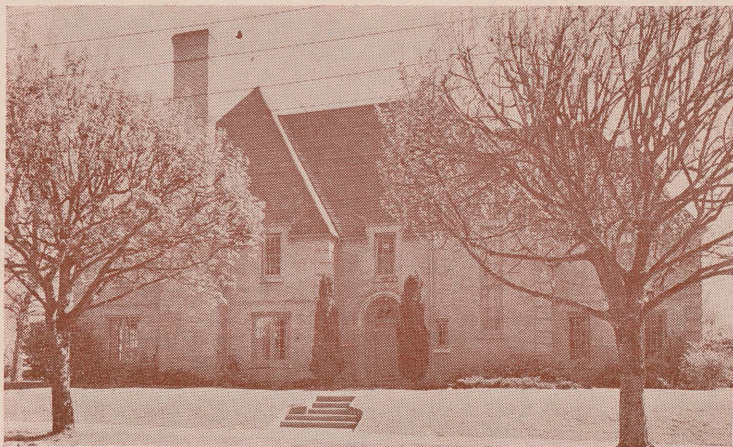
1335 Van Buren Street

President—Jane Carter

Rush Chairman—Kaaren Johanson

PI BETA PHI

"Pi Phi's"



3002 Harrison Street

President—Patti Huffschtidt Rush Chairman—Mickey Pfouts

SIGMA KAPPA

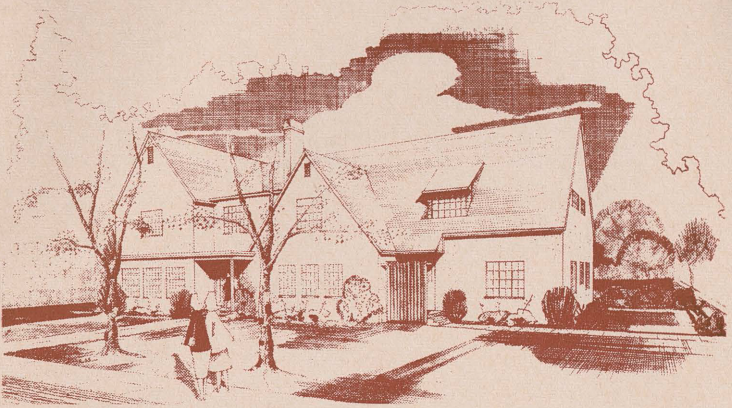
"Sigma Kappa's"



231 North 26th Street

President—Kathy Caldwell

Rush Chairmen—Judy Kinsley, Linda Brogden



3003 Harrison Street

President—Marthanna McFetridge

Rush Chairman—Connie Bowers

Notes

Notes



KNOW YOUR GREEK

Names and Pronunciation

Α

ALPHA

al-fah

Β

BETA

bay-tah

Γ

GAMMA

gam-ah

Δ

DELTA

del-tah

Ε

Epsilon

ep-si-lon

Ζ

ZETA

zay-tah

Η

ETA

ay-tah

Θ

THETA

thay-tah

Ι

IOTA

eye-o-tah

Κ

KAPPA

cap-ah

Λ

LAMBDA

lamb-dah

Μ

MU

mew

Ν

NU

new

Ξ

XI

zzEYE

Ο

OMICRON

omm-e-cron

Π

PI

pie

Ρ

RHO

roe

Σ

SIGMA

sig-mah

Τ

TAU

taw

Υ

UPSILON

oop-si-lon

Φ

PHI

fie

Χ

CHI

KEYE

Ψ

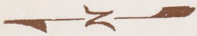
PSI

sigh

Ω

OMEGA

o-may-gah



HARRISON ST
VAN BUREN ST
JACKSON ST
MONROE ST
MADISON ST
9th ST
10th ST
11th ST
12th ST
13th ST
14th ST
15th ST
16th ST
17th ST

CAMPUS

UNIVERSITY

JEFFERSON ST

MEMORIAL UNION

SNELL HALL

STATE

SACKETT HALL

HAWLEY HALL

BUXTON HALL

WEST HALL

THE MALL

OREGON

Zeta Tau Alpha
Beta Phi
Alpha Omicron Pi
Alpha Phi
Alpha Gamma Delta
Delta Delta Delta
Alpha Chi Omega

Alpha Delta Pi
Alpha Xi Delta
Delta Zeta
Chi Omega
Kappa Delta
Sigma Kappa

Kappa Kappa Gamma

Gamma Phi Beta
Kappa Alpha Theta
Delta Gamma

ARNOLD WAY
27th ST
28th ST
29th ST
30th ST

26th ST
25th ST
24th ST
23rd ST