

OREGON STATE
UNIVERSITY
ARCHIVES

Greek Alphabet

Α ALPHA

Β BETA

Γ GAMMA

Δ DELTA

Ε EPSILON

Ζ ZETA

Η ETA

Θ THETA

Ι IOTA

Κ KAPPA

Λ LAMBDA

Μ MU

Ν NU

Ξ XI

Ο OMICRON

Π PI

Ρ RHO

Σ SIGMA

Τ TAU

Υ UPSILON

Φ PHI

Χ CHI

Ψ PSI

Ω OMEGA

The Panhellenic Creed

Adopted 1966

WE, THE UNDERGRADUATE MEMBERS of women's fraternities, stand for good scholarship, for guarding of good health, for maintenance of fine standards, and for serving, to the best of our ability, our college community. Cooperation for furthering fraternity life, in harmony with its best possibilities, is the ideal that shall guide our fraternity activities.

WE, THE FRATERNITY WOMEN OF AMERICA, stand for service through the development of character inspired by the close contact and deep friendship of individual fraternity and Panhellenic life. The opportunity of wide and wise human service, through mutual respect and helpfulness, is the tenet by which we strive to live.

PANHELLENIC OFFICERS

President	Beth Yancey
1st Vice President	Jolene Gettig
2nd Vice President	Marcy Fessler
Secretary	Claudia Grossnicklaus
Treasurer	Mary DeLaurenti
Assistant Rush Chairman	Holly Rogers
Editor	Patty Burgin
Cover by	Patty Burgin

TABLE OF CONTENTS

Greek Alphabet.....	Inside Front Cover
Panhellenic Creed.....	1
Panhellenic Officers	2
Welcome from Panhellenic President.....	3
Welcome from Panhellenic Adviser	4
The Sorority Life-Style	5
What is Panhellenic?	6
Panhellenic Philanthropies	6 - 7
What is Rush week.....	8
Guideposts to a Wise Choice	8 - 9
Responsibilities & Obligations of Pledging a Sorority	10
Rushing Rules	11 - 13
Initiation Requirements.....	13
Rushee's Webster	14 - 15
The Quota-Limitation System.....	15
Campus and Dressy Dress	16
Casual and Rain Wear	17
How to Register	18
When you Arrive	18 - 19
Summer Orientation	19
Additional Rush Information	19
Sorority Financial Averages.....	20
Sorority Pictures and Pins	21 - 35
Rush Schedule.....	36
Rush Registration Card	Back Page Extension
Sororities at OSU	Back Cover

Dear Rushee,

Welcome to Oregon State University, the place where you will find opportunities for many rewarding and enjoyable experiences.

We, as sorority women, are anxious to meet you, both during rush and on campus. Rush offers the opportunity to make new friends and to prepare for the beginning of your college career.

Greek living encourages and promotes academic achievement, offers numerous opportunities for social development, and provides you with lasting friendships. We hope you will ask questions about these specific areas as you visit each of the sororities and decide for yourself which aspects are relevant to you. After graduation there will be opportunities to join alumnae chapters or clubs.

We have fifteen national sororities on the Oregon State campus. During rush week, you will have the opportunity to visit each sorority, meet many of the individual members, and carefully evaluate what they have to offer. Choosing a sorority is a process of mutual agreement between you and the sorority. You will decide where you would be the happiest, where you feel most comfortable, where you can best use your talents, and which sorority offers most to you. There will probably be more than one in which you would be happy, so consider them all carefully, for this is an important decision you will be making.

When you come to Oregon State for rush, come with an open mind. Preconceived ideas are of little value and often can be a disadvantage. Come with lots of enthusiasm and be prepared for a fun and tiring but memorable week.

The Panhellenic Officers and Delegates are more than willing and anxious to meet you and help you should any problem arise. We wish you the best of luck and we'll see you in September.



Beth Yancey
Panhellenic President



Welcome to Oregon State University! We hope you will find your life on our campus these next few years a challenging and worthwhile experience. We believe Oregon State has much to offer in both academic pursuits and the wide scope of social and cultural activities in which you may participate according to your interests.

Oregon State University takes pride in its many and varied recognized living groups. The University considers them an integral part of the total campus picture. We feel it is important for you to have a choice of housing situations so that you may select the one most tailored to your individual needs and interests. Sororities afford a small group-living experience for many women students. You will find opportunities that promote close friendships, social development, and intellectual growth, as well as group participation and leadership.

The process of choosing a sorority is one of mutual agreement between the prospective member (rushee) and the sorority. We encourage you to rush with objectivity and to look upon Rush Week as a period to meet many new people and initiate new friendships. Each sorority has much to offer and, should you decide to pledge we trust you will have weighed carefully your decision with respect to what you can contribute to the group. Should you decide not to pledge after rush, we hope you will have benefitted from the experience and the contact with other women, new and returning to OSU.

The 1971-72 Rush Week will begin September 22 and after new students have been advised and had a chance to become acquainted with the campus. It is our hope that the rush period will be more convenient this way.

We look forward to your participation in rush. If, after reading this booklet, you or your parents have any questions, please write or come in to see us.

Kay Conrad, Assistant Dean of Students
Adviser to Panhellenic

THE SORORITY LIFE-STYLE

Sororities extend opportunities for the development of the woman — intellectually, socially and spiritually. She in turn, shares her own talents with her sorority. A girl doesn't become what her house is, but rather, that house becomes what she is. The result is a rewarding give-and-take experience.

Sorority living offers you a unique involvement with other women through that very special interpersonal relationship called sisterhood: The one quality that makes our life-style so unique. Sisterhood is a learning experience that means consideration, respect and cooperation. It is the bond between the deepest and truest of friends. It makes the sorority environment one in which you may find and maintain your values and your identity within a world of changing demands and standards.

All sororities strive to widen the intellectual horizons and inspire the cultural interests of their members. By stressing high scholastic standards, and a well-rounded social life, sororities have established themselves as an integral part of the OSU community. Leadership development is promoted through the responsibilities of sorority living. The art of knowing people and the ability to live and interact with them successfully is still another vital aspect in the process of your personal growth.

Sorority living is more than a sorority house where you eat and sleep and collapse between classes. It is more than the pin you fasten on your dress each day, and more than just having fifty acquaintances to say "Hi" to on campus. It is more still than house dances, exchanges, and parties that make up the social collage . . . Sorority living is people—living and giving. Each woman will offer you something different, uniquely her own, but equally valuable. All of your talents are put to use; you might even discover a few new ones. Sorority living is preparation, learning, giving, receiving . . . and fun.

WHAT IS PANHELLENIC?

Sororities are actually national fraternities for women and are a recognized, long established and important part of college life on many college campuses in the United States and Canada.

The inter-sorority organization called Panhellenic governs the inner working of rushing and sororities. The name "Panhellenic" is derived from the Greek roots, "Pan," meaning "all," and "Hellenic" meaning "Greek." Panhellenic therefore is an organization of all Greek women.

As soon as you pledge a sorority, you become a member of Panhellenic. Until you pledge and while you are a rushee, Panhellenic will give to you all necessary information on all sororities, and will answer all personal questions which arise during Rush Week. During formal rush contact Panhellenic in room 213 in the Memorial Union or a Panhellenic Delegate as soon as you have a question to ask. It is here, and not from the other rushees in the halls, that you will get the correct answer. Panhellenic workers are impartial authorities on what to do and how to do it.

PANHELLENIC PHILANTHROPIES

National Sororities represented at OSU contribute both in funds and in hours of volunteer service to philanthropic projects. Each organization has chosen to help in a specific area where society has fallen short in solving the problems of the blind, the crippled, and the underprivileged.

Alpha Chi Omega — National Easter Seal societies; Arthritis; McDowell Colony

Alpha Delta Pi — Aid to crippled children by providing medical equipment for treatment.

Alpha Gamma Delta – National Society for crippled children and adults; Cleft lip and palate study at Syracuse University

Alpha Omicron Pi – Arthritis Research

Alpha Phi – Cardiac Aid Foundation

Chi Omega – Contributions by chapters to betterment of local community

Delta Delta Delta – National scholarships and fellowships; local contributions to philanthropic agencies.

Delta Gamma – Sight Conservation and Aid to Blind; International Education assisting 10 foreign students each year

Delta Zeta – Adventures in Friendship to support national and local philanthropic causes

Gamma Phi Beta – Operate two summer camps for underprivileged girls

Kappa Alpha Theta – Institute of Logopedics, Wichita, Kansas

Kappa Delta – Crippled Children's Hospital, Richmond, Va. and Orthopedic research

Kappa Kappa Gamma – National Philanthropic projects; local rehabilitation projects

Pi Beta Phi – Arrowmont School of Arts and Crafts, Gatlinburg, Tenn.; Northern Libraries project in Canada supplying libraries in the Yukon and Northwest Territories

Sigma Kappa – Maine Seacoast Mission; Gerontology; American Farm School in Salonica, Greece

WHAT IS RUSH WEEK

Rush Week is a period during which Greek women entertain potential sorority women, or "rushees," in the hope that they will get to know many rushees personally, and that the rushees will become acquainted with them and with their sororities.

It is the desire of Panhellenic, and each individual member of the sororities, that each girl who is interested in belonging to a sorority will find the niche that fits her personal needs.

During the rushing period, the members of each sorority will be talking enthusiastically about their own group. They do not do this because of disregard for other groups, but because they are in a position to give information only about their own. If at any time you want unbiased official information, go to the Panhellenic Rush Office Room 213 in the Memorial Union, or ask a Panhellenic Delegate.

Regulations concerning rushing are formulated and agreed upon by Panhellenic, and all sorority women are familiar with them. All these specific rules and regulations are laid down by Panhellenic in order that each rushee will be able to make her own decision when the time comes for signing of pledge cards.

GUIDEPOSTS TO A WISE CHOICE

As in most cases where a decision must be made, much free advice will find its way to your ears, some of it helpful, but most of it only adding to your confusion. What can you do about this situation? How can you pick out with certainty and an open mind the sorority which will provide a happy college home?

Some of the guideposts Panhellenic has found most valuable to a successful choice include the following:

Choose a sorority that offers you opportunities for enduring friendships. Do not be swayed by material possessions, a new sorority house, picture, or other outward displays. Choose a group with which you feel at ease.

Choose a group in which you feel you will work hard and congenially on the solution of its problems.

Choose a group which makes you think highly of other groups and allows you to make up your own mind.

Do not fall for high pressure salesmanship.

It is only fair to inform you that spaces for upperclassmen to pledge are generally more limited than for freshmen. However, a majority of the upperclassmen going through Rush usually do pledge.

If you decide not to pledge a sorority at this time, you may be interested in Informal Rush. Informal Rush begins immediately following the closure of Formal Rush and continues throughout the school year. For information contact the Panhellenic office in the Administrative Services Building.

There are many people on campus who are there to help you make your decision. Among them are the Associate Dean of Students and the Assistant Dean of Students who will be counseling during rush in the M.U. and are available at other times in their office in the Administrative Services Building.

As a rushee you'll probably have questions about sorority living. You may not know what to ask to find out more about what's important to you in your final choice. Panhellenic has compiled this list of topics in the hope that it will give you some ideas and will make rush easier for you.

Why are you in a sorority? How has sorority living benefited you?

What is your Big Sister program?

What are the financial obligations of a pledge; of a member?

What kind of mandatory functions do you have? Service projects, exchanges, special banquets, workshops, campus activities, etc.

What are your academic requirements, study table?

What are pledge duties?

RESPONSIBILITIES & OBLIGATIONS OF PLEDGING A SORORITY

When you, as a rushee, consider pledging a sorority, think about it carefully. Membership in a sorority should be taken seriously.

Sorority membership can be a very rewarding experience for those who will accept the challenge and are willing to devote the time and effort required to receive the benefits from it. Belonging to a sorority helps to develop and prepare a member for life after college. Social etiquette, self discipline, leadership ability, learning to live and cooperate with others, and the making of lifetime friends are some of the benefits gained from sorority affiliation and Greek living.

But let's not forget the "give" side. You only get out of sorority life what you put into it. It does take time, especially your freshman year as a pledge. Most sorority activities take place at the chapter house; a lot of these will be required for pledges, while some will be optional. This is where self discipline enters; you must budget your time to be able to participate in social, campus, and sorority activities without sacrificing studying.

Most Greek women are able to balance their time to participate in campus activities, honoraries, sorority and classroom activities effectively.

When a pledge is initiated into full membership in a sorority, she assumes greater responsibility in the group. Living in the chapter house for the remaining three years of her college days requires that some adjustments be made; it is well worth it for the benefits gained. It is an exciting challenge and a wonderful opportunity for those who are willing to accept the obligations and responsibilities involved.

Panhellenic urges you to think seriously when making the decision to join and do not hesitate to ask the Panhellenic officers, the delegates or any of the other sorority women any questions you might have.

RUSHING RULES

Eligibility for Rushing

A student may be rushed who:

- a. has been officially admitted to OSU* in good standing, or
- b. has completed 12 or more quarter hours of previous college work with a 2.00 accumulative college GPA and is not on academic probation. Individual sororities may set higher requirements for pledging.

FORMAL RUSH

1. During a formal rush period, no student may be rushed who has not paid the rush registration fee and whose name does not appear on the rush list. All students who wish to rush must have registered and paid the rush fee before September 10 preceding the formal rush period.
2. There shall be meetings of all rushees to explain rush rules and procedures prior to each formal rush period.
3. Panhellenic, with the approval of its adviser, will set the upper limitation during spring term and quota at the beginning of formal rush.
4. Silent period is the time during which sorority members may wear pins and talk in passing on campus to rushees, but no coke dates or meetings between rushees and affiliated women are allowed. Silent period begins rush week upon arrival in Corvallis and remains in effect on and off campus until ribbon pledging at the end of formal rush. Sorority members may not go to residence halls and may not telephone rushees. (If absolutely necessary, a sister of a girl in a sorority may be an exception.) If communication with a rushee is necessary, contact the Panhellenic Office.
5. No affiliated women except residence hall advisers and officers, and Panhellenic officers and delegates, without pins and other fraternal identification, may go into an independent living group during silent period.
6. Panhellenic delegates, residence hall advisers, and Panhellenic officers cannot wear or display any sorority insignia or emblems

* OSU Admission GPA placed on rush list.

- until after fall term ribbon pledging.
7. Absolutely no form of rushing, other than specified parties, is to take place during formal rush periods.
 8. Beginning with the return to campus in the fall and for the duration of silent period affiliated women may not double date with or arrange dates for rushees.
 9. During formal rush, rushees are not to attend any functions with affiliated women other than sorority rush parties.
 10. There shall be no "hot-boxing" permitted during any Panhellenic rush period, formal or informal. "Hot-boxing" shall be defined as the pressuring of a rushee through any individual or group conference conducted by one or more members of a sorority for the purpose of promoting or degrading a specific sorority.
 11. Themes, decorations, or favors (napkins, place cards, etc.) used at formal rush functions cannot be taken from the chapter house by rushees until formal rush has ended.
 12. Sorority members and pledges only may present entertainment at rush parties. (Houseboys may serve refreshments only.) Alumnae and actives from other chapters are considered sorority members.
 13. Rushees are **required** to accept the maximum number of invitations possible on the 9-party and 6-party days of rush.
 14. Rushees must attend accepted preference parties unless ill or excused by the Panhellenic Office. Nonattendance will drop them from rush.
 15. Names of pledges at the end of the formal rush period shall be released for publication by the Panhellenic Office only.
 16. Lost and found items should be turned in to the Panhellenic Office.
 17. College chapters will be held responsible for any infraction of rush rules by their respective alumnae groups, individual college and alumnae members, and housemothers.
 18. Any infraction of these rush rules should be reported in writing with specific information, including the names of the persons involved in the offense, within one week of the alleged infraction to the Panhellenic Office and will be dealt with by the Panhellenic Judiciary Committee according to OSU or NPC recommended procedure.
 19. If there are any questions concerning rush policies or procedures,

write to the Panhellenic President, Summer Secretary, or Associate Dean of Students, Bexell 114, Corvallis, Oregon 97331.

Note: After August 1, 1971, the office will move from Bexell 114 to the Administrative Services Building.

20. Additional rush rules for formal and informal rush periods shall be set by the Panhellenic Council preceding the respective periods.

INFORMAL (Open) RUSH

1. Sororities whose full membership, members and pledges, does not exceed their upper limitation or sororities who have not filled their pledge quota may hold informal rush and pledging during the year. (Details will be announced through the Barometer, the school paper.)
2. To be eligible to be pledged in an informal rush period, a rushee must fulfill the scholastic requirements set for formal rush.
3. Payment of the formal rush fee entitles a student to rush privileges for the academic year (September to June). A student who did not participate in formal rush must pay her rush registration fee at the time her pledge slip is turned in to the Panhellenic Office.
4. If a girl has broken her pledge or has had her pledgeship broken by a sorority, she is not eligible to rush for one calendar year from the date of broken affiliation.
5. A student is not officially pledged until the Panhellenic Office has on file her signed pledge slip and she has paid her rush fee.
6. The pledge slip and rush fee must be turned in to the Panhellenic Office within 24 hours of pledging.
7. Lists of students pledged during informal rush shall be released for publication by the Panhellenic Office following the informal rush period each term.

INITIATION REQUIREMENTS

Initiation requirements for all sororities shall be 12 hours of credit with a minimum grade point of 2.00 for the previous term and not on academic probation. Individual sororities may set higher requirements.

RUSHEE'S WEBSTER

- ACTIVE** — A girl who has completed her period of pledgship and who has been initiated into her sorority.
- AFFILIATED** — Any student who is a pledge or a member of a Greek organization.
- ALUMNAE** — Initiated sorority women who have graduated or who have withdrawn from college.
- BID** — The official invitation to become a pledge of a sorority.
- BLUE CARDS** — A way a rushee can indicate she would like to return to a house.
- CAMPUS** — School clothes: the type of dress worn to classes and most rush parties. . . . campus dress will be worn Thursday, Friday and Sunday (See Page 16)
- CASUAL** — Pants or pant skirts; the type of clothes worn to the picnic on Wednesday and Saturday (See page 17).
- CAR POOL** — Cars marked "Panhellenic Ride" will be available to transport rushees to houses further out.
- CHAPTER** — The local group that is part of a national organization. It may be Alpha chapter of Beta Beta Beta.
- DRESSY** — The type of dress worn to church and the dress worn to preference parties and to luncheon on pledge day. . . (See page 16).
- EXCHANGE** — Dinner or dessert dates where a fraternity and sorority get together.
- FORMAL RUSH** — The period of rush which is scheduled through Panhellenic and where every rushee visits every sorority at least once. All rush parties are planned through Panhellenic.
- GREEK** — The name applied to all fraternity and sorority members. This name is used because their organizations identify themselves by Greek letters.
- INVITATION CARDS** — An invitation from a sorority to its next rush party.
- LEGACY** — A daughter or sister of an alumna or a sorority girl. During rush week, legacies receive the same consideration as any rushee.
- M.U.** — The center of all campus activities is called the Memorial Union

or the M.U.

PANHELLENIC DELEGATE – A sorority member who is trained by Panhellenic to help during Rush Week. She will live with you in the residence hall and will be available through Rush Week to help you with your questions and problems.

PLEDGE – A girl who has accepted the bid of a sorority and has participated in their pledge ceremony.

PREFERENCES – The sororities you put on the preference card as your first, second, and third choices. Panhellenic urges you to have three choices if at all possible.

RUSHING – Time and events that sororities plan for gaining new members.

RUSH PERIOD – A series of parties where you visit the various sororities and choose the one or ones that you prefer.

SILENT PERIOD – Starting from your arrival on campus and continuing through the formal rush period, contact with sorority women other than a scheduled rush party may not be made.

WEATHER – Unpredictable. It would be wise to include rain gear and an umbrella in your wardrobe.

THE QUOTA-LIMITATION SYSTEM

Each sorority is limited in its total membership and in its total number of pledges per year by what is called a quota-limitation system.

Each year the Oregon State University Panhellenic establishes a new pledge quota for sorority membership. The number of pledges allowed each chapter is determined by the total number of girls interested in sorority membership.

This quota-limitation system should not influence in any way your choice of a sorority. The reasons for following such a system have been given by the National Panhellenic Conference. The Oregon State University Panhellenic wants you to know and understand these reasons.

- A strong Panhellenic is possible only when all chapters are of similar size and strength.
- Size is not actually a criterion of strength, and quota-limitation system affirms the welfare of all chapters.



CAMPUS DRESS

Campus dress will be worn to the Thursday, Friday and Sunday Parties.

DRESSY

Dressy dresses will be worn to Monday's Preference Night Parties.



(Photos by Jim Edmunson)



CASUAL DRESS

Casual dress will be worn to the picnic on Wednesday, and during rush parties on Saturday.

RAIN WEAR

“At OSU?”
A Must!



(Photos by Jim Edmunson)

HOW TO REGISTER

September 10 is deadline

1. Complete the registration card found in the back of this booklet. Mail this completed card with a check or money order for \$7.00, payable to OSU Panhellenic, to Panhellenic Council, c/o Associate Dean of Students Office, Bexell 114, Oregon State University, Corvallis, Oregon 97331. After August 1, mail your registration to Panhellenic Council at its new location in the Administrative Services Building.
2. If you are a freshman, be sure that you have made a housing reservation and have made a \$50 deposit for the Oregon State University residence halls. For information concerning residence halls, write to the Department of Housing, Oregon State University, Corvallis, Oregon 97331. **All freshmen, not living at home, are required to live in University residence halls.** Your permanent hall assignment will be sent to you by the Housing Department and will also be your rush week hall assignment.
3. Sophomore and junior rushees are strongly advised to rush without a housing contract if desiring to move directly into the sorority house fall term. If you have not signed a housing contract and you pledge a sorority which is able to house upperclass pledges, you may move directly into the house. If you choose not to pledge, university approved housing will be available for which you may make contractual arrangements. Upperclass room and board fees for rush week are \$39.00 in addition to the \$7.00 rush fee.
4. The deadline for rush registration is September 10, 1971. Late registration will be considered.
5. If, for some unavoidable reason, such as illness, you are unable to come for rush, the room and board fee of \$39.00 will be refunded up to September 21, 1971. The Panhellenic rush fee (\$7.00) is refundable until September 10, 1971.
6. An optional medical, surgical insurance plan is available for \$1.00 to all students participating in Rush Week. If you wish to have this coverage, you will find further information concerning it in the letter which is sent to you after you register for rush.

WHEN YOU ARRIVE

When you arrive on campus September 22, 1971, report to your

permanent hall assignment. Upperclassmen report to Snell Hall for your rush week room assignment. All meals for rush will be served in your regular dining hall.

Please try to arrive in late morning or early afternoon of September 22. The first meeting for rush is scheduled for 5:00 p.m.

SUMMER ORIENTATION

All freshmen participating in fall formal rush are urged to take advantage of the Summer Orientation-Advising Program. There are four sessions, of two days each: July 14-16, July 18-20, and July 21-23. Several sorority houses will be open for tours during each session. If you have any questions about OSU Summer Orientation please write to:

Office of New Student Programs
Oregon State University
Bexell Hall 109
Corvallis, Oregon 97331

ADDITIONAL RUSH INFORMATION

1. **Read this Handbook carefully from cover to cover.** Refer to it often for answers to your questions that arise. **Be sure to bring this Booklet with you for Rush.**
2. Read the rushing rules and know them well.
3. Wear your Panhellenic nametag to all rush parties.
4. Attend all rush parties you sign up for. If you become ill and cannot attend, call the Panhellenic office, NOT the sorority house.
5. Dress simply and in good taste. Remember most high fashion is simple.
6. Be on time. If you are late, do not apologize more than once.
7. Don't adopt a new personality for rush week. Your natural one is the one the sorority is interested in.
8. Don't make disparaging remarks about a sorority. You may be talking to a girl who is very interested in that sorority or has a sister or mother who is a member.
9. Don't discuss your preference. Rush is a personal concern and your own decision.
10. Pay no attention to rumors. Find out the real facts by going to the Panhellenic office.
11. Don't let anyone high pressure you. Make your own decision.
12. Above all, **Relax and be yourself.**

SORORITY FINANCIAL AVERAGES

(Based upon 1970-71 costs)

I. Freshman Sorority Pledge Expense – Living Out

	YEARLY			MONTHLY	
	Ave.	Range		Ave.	Range
Pledge Fees*	\$ 18	\$ 15 -	\$ 25	Lump Sum	
Initiation*	74	58 -	90	Lump Sum	
Building Fund**	92**	45 -	156	\$10**	\$ 5 - \$25**
Dues & Misc. (includes house meals)	144	113 -	181	16	10 - 20
<hr/>					
Total Freshman Pledge Expense	328	245 -	424	26	
<hr/>					
Total Hall Expense	928	900 -	951		
<hr/>					
Total for Sorority Freshmen	\$1256	\$1145 - \$1375			

II. Upperclass Pledge Expense – Living in Sorority

	YEARLY			MONTHLY	
	Ave.	Range		Ave	Range
Pledge Fees*	\$ 18	\$ 15 -	\$ 25	Lump Sum	
Initiation*	74	58 -	90	Lump Sum	
Building Fund**	92**	45 -	156	\$10**	\$ 5 - \$25**
Dues & Misc.	72	45 -	99	8	5 - 11
Board & Room	878	835 -	927	97	91 - 103
<hr/>					
Total Upper Class Pledge Expense	\$1134			\$117	

III. Upperclass Sorority Member Living in Expense

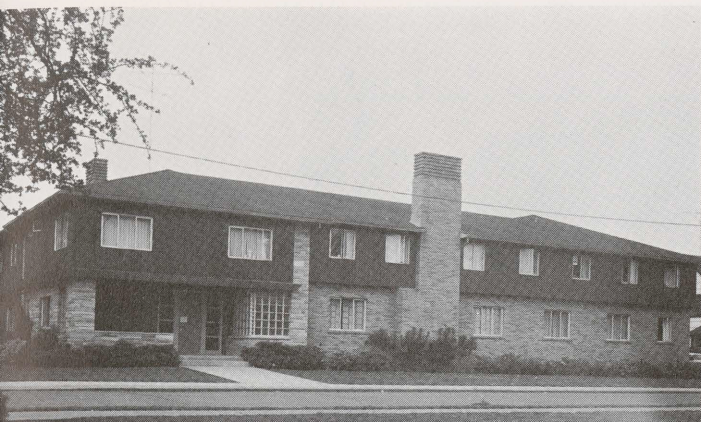
	YEARLY			MONTHLY	
	Ave.	Range		Ave.	Range
Dues & Misc.	\$ 72	\$ 45 -	\$ 99	\$ 8	\$ 5 - \$ 11
Board & Room	878	835 -	927	97	91 - 103
Building Fund**					

Second, third and fourth year total expense average \$977 with a range of \$844 - \$1064.

*Paid one time only, at time of pledging or initiation respectively.

**Building Fund payments average \$92 for the first year, but range from \$45 to \$156. Six sororities require entire building fund the first year. Six houses have none the second year, ten houses have none the third year, eleven have none the fourth year. In nine, the yearly range is from \$35 to \$63. Average: \$52. In five, the yearly range is from \$30 to \$57. Average: \$36. In four, the yearly range is from \$45 to \$54. Average: \$47.

***Less than for freshmen because meals are included in upperclass room & board.



ALPHA CHI OMEGA

“Alpha Chi’s”

Comments:

Founded: October 15, 1885

Established on the Oregon State Campus: March 19, 1915

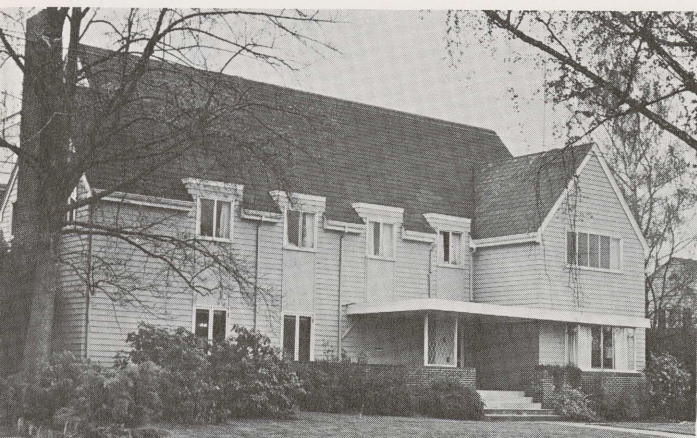
President: Leslie Lindell

Rush Chairman: Marilyn Bramwell

Flower: Scarlet Carnation

Colors: Scarlet and Olive Green

House Mother: Mrs. Vivian Johnson



ALPHA DELTA PI

“A D Pi’s”

Comments:

Founded: May 15, 1851

Established on the Oregon State Campus: October 16, 1926

President: Connie Miller

Rush Chairman: Terri Leinassar

Flower: Purple Violet

Colors: White and Azure Blue

Housemother: Mrs. Vernice K. Jones



ALPHA GAMMA DELTA

“Alpha Gam’s”

Comments:

Founded: May 30, 1904

Established on the Oregon State Campus: May 21, 1921

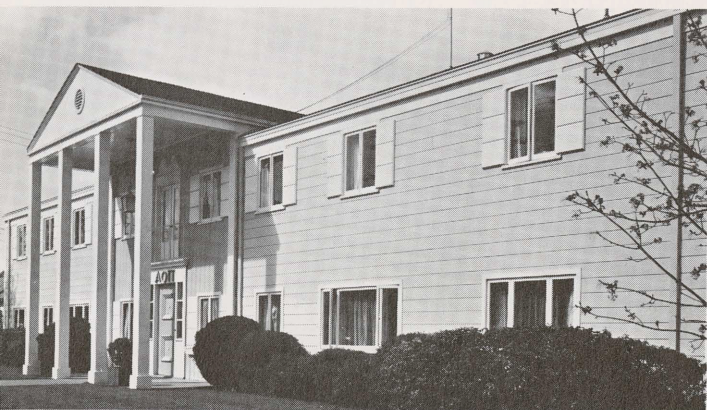
President: Margie Turenne

Rush Chairman: Ellen Witt

Flower: Red and Buff Roses

Colors: Red, Buff, and Green

Housemother: Mrs. Stieverson



ALPHA OMICRON PI

“A O Pi’s”

Comments:

Founded: January 2, 1897

Established on the Oregon State Campus: June 5, 1926

President: Mary Sale

Rush Chairman: Liz Gerhardt

Flower: Jacqueminot Rose

Colors: Cardinal

Housemother: Mrs. Ernestine Wheeler



ALPHA PHI

“Phi’s”

Comments:

Founded: October 10, 1872

Established on the Oregon State Campus: 1947

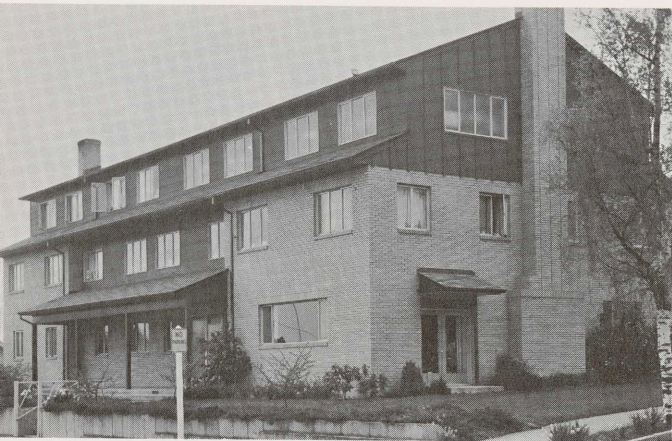
President: Carolyn Jackson

Rush Chairman: Chris Rainey

Flower: Forget-Me-Not

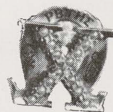
Colors: Silver and Bordeaux

Housemother: Mrs. Charlene Dern



CHI OMEGA

“Chi O’s”



Comments:

Founded: April 5, 1895

Established on the Oregon State Campus: October 6, 1917

President: Patty Lawrence

Rush Chairman: Debby Frashour

Flower: White Carnation

Colors: Cardinal and Straw

Housemother: Mrs. Rae Anderson



DELTA DELTA DELTA

“Tri Delts”

Comments:

Founded: Thanksgiving Eve, 1888

Established on the Oregon State Campus: December 8, 1918

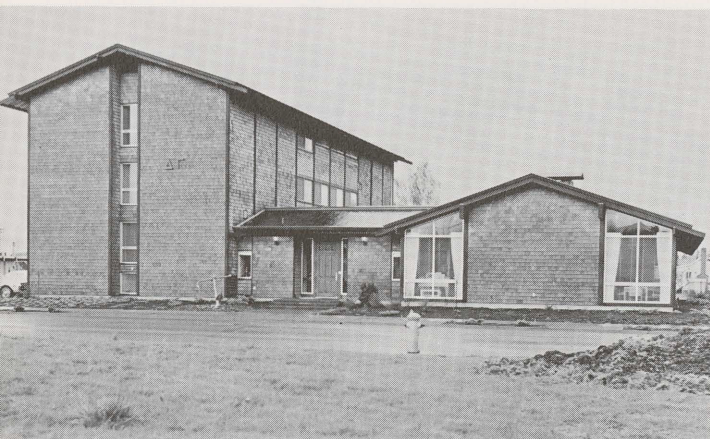
President: Kay Kipp

Rush Chairman: Lolly Hoffman

Flower: Pansy

Colors: Silver, Gold, and Blue

Housemother: Mrs. Mildred L. Maxwell



DELTA GAMMA

“DG’s”

Comments:

Founded: December, 1873

Established on the Oregon State Campus: 1946

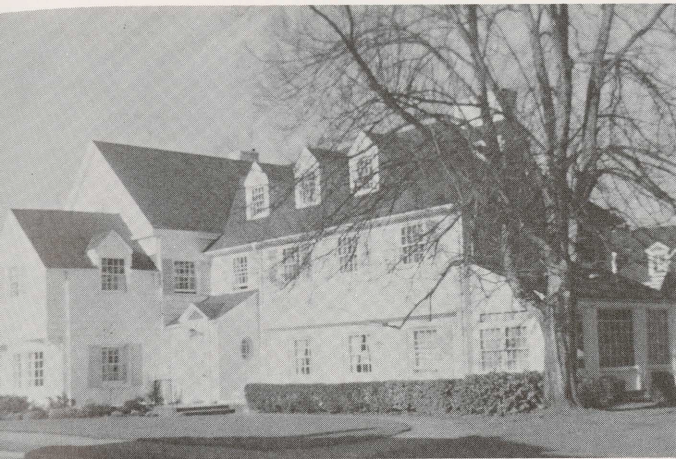
President: Jan Graden

Rush Chairman: Marlene Schreiber

Flower: Cream Rose

Colors: Bronze, Pink, and Blue

Housemother: Mrs. Mary Ward



DELTA ZETA

“D Z’s”



Comments:

Founded: October 24, 1902

Established on the Oregon State Campus: April 25, 1919

President: Ingra Rinearson

Rush Chairman: Sue Gill

Flower: Killarney Rose

Colors: Old Rose and Nile Green

Housemother: Mrs. Helen Lucas



GAMMA PHI BETA

“Gamma Phi’s”

Comments:

Founded: November 11, 1874

Established on the Oregon State Campus: April 26, 1918

President: Jody Cornwell

Rush Chairman: Karen Sherwood

Flower: Pink Carnation

Colors: Brown and Mode

Housemother: Mrs. O.L. Hutchins



KAPPA ALPHA THETA

“Theta’s”

Comments:

Founded: January 27, 1870

Established on the Oregon State Campus: November 10, 1917

President: Janet England

Rush Chairman: Joni Johnson

Flower: Pansy

Colors: Black and Gold

Housemother: Mrs. Tressie E. Winkles



KAPPA DELTA

“KD’s”

Comments:

Founded: October 23, 1879

Established on the Oregon State Campus: October 16, 1926

President: Marilyn Mudge

Rush Chairman: Jeanne Schell

Flower: White Rose

Colors: Olive Green and Pearl White

Housemother: Mrs. Gladys F. Carson



KAPPA KAPPA GAMMA “Kappa’s”

Comments:

Founded: October 13, 1870

Established on the Oregon State Campus: June 7, 1924

President: Chris Browning

Rush Chairman: Barbara Kent

Flower: Fleur-de-lis

Colors: Sky and Sea Blue

Housemother: Mrs. Avison



PI BETA PHI

“Pi Phi’s”



Comments:

Founded: April 28, 1876

Established on the Oregon State Campus: May, 1917

President: Ann Rasmussen

Rush Chairman: Allison Evans

Flower: Wine Carnation

Colors: Wine and Silver Blue

Housemother: Mrs. Alice Forester



SIGMA KAPPA

“Sigma Kappa’s”

Comments:

Founded: November 9, 1874

Established on the Oregon State Campus: May 31, 1918

President: Gayle Owen

Rush Chairman: Bobbi Clarke

Flower: Violet

Colors: Lavender and Maroon

Housemother: Mrs. McCarthy

THE PANHELLENIC DELEGATES

These girls, the representatives of the houses to Panhellenic, will be available to help you throughout Rush Week with any problems or questions you may have concerning anything, from rush to registration.

Joyce Bakalar

Elementary Education
Salem, Oregon

West Barrett

Elementary Education
Corvallis, Oregon

Kyle Bruce

Home Economics
Communications
Seattle, Washington

Sue Burpee

Pharmacy
Boise, Idaho

Kathy Glass

Humanities and Social Sciences
Bly, Oregon

Kay Harris

Home Economics Education
Madras, Oregon

Leslie Hellmann

Sociology
Lafayette, California

Ellen Huffaker

Home Economics
Salem, Oregon

Lynn Lee

Elementary Education—
Liberal Studies
Portland, Oregon

Claudia McKinnon

Speech and Journalism
Portland, Oregon

Sue Miller

Home Economics
Siletz, Oregon

Kathy Van Lom

Health and Physical Education
Portland, Oregon

Jill Wissler

Business
Portland, Oregon

Lynn Williams

Math Education
Beaverton, Oregon

Vivian Woods

Home Economics Education
Woodburn, Oregon

RUSH REGISTRATION INSTRUCTIONS

1. Fill out the registration card using the name by which you have registered at OSU. Please print in ink or type.
2. Enclose card (do not fold) with a check or money order for \$7.00, Rush fee, payable to Panhellenic Council. Upperclassmen without dorm contracts enclose \$46.00 (\$39.00 room and board fee plus \$7.00 Rush fee).
3. Address to OSU Panhellenic Council, c/o Associate Dean of Students, Bexell Hall 114, OSU, Corvallis, Oregon 97331.
Note: After August 1, Panhellenic Council will move to the Administrative Services Building, Second Floor.

Registration Deadline is September 10, 1971*

PLEASE PRINT

(CUT ALONG THIS LINE)

PANHellenic REGISTRATION

For Office Use Only

Name L A S T F I R S T M I D D L E A G E GPA
Home Address N O . S T R E E T R e c e i p t N o . L i s t N o .

 C I T Y S T A T E Z I P T E L E P H O N E
Name of Parent or Guardian
High School Attended C i t y S t a t e
Previous College Attended C i t y Y r . i n C o l l e g e
Entrance Grade Point: High School P r e v i o u s C o l l e g e O S U C u m . G P A

Sorority affiliation of mother or sister, if any
Enclosed: \$46.00 Registration and Room and Board Fee

--	--

 () M.O. () Check
\$ 7.00 Registration only

I authorize Panhellenic to make my grades and information on this card available to all the sororities.

 D A T E S I G N A T U R E O F S T U D E N T D E T A C H H E R E

* Late registrations will be considered.

SORORITIES AT OSU



- 1. ALPHA CHI OMEGA
- 2. ALPHA DELTA PI
- 3. ALPHA GAMMA DELTA
- 4. ALPHA OMICRON PI
- 5. ALPHA PHI
- 6. CHI OMEGA
- 7. DELTA DELTA DELTA
- 8. DELTA GAMMA
- 9. DELTA ZETA
- 10. GAMMA PHI BETA
- 11. KAPPA ALPHA THETA
- 12. KAPPA DELTA
- 13. KAPPA KAPPA GAMMA
- 14. PI BETA PHI
- 15. SIGMA KAPPA