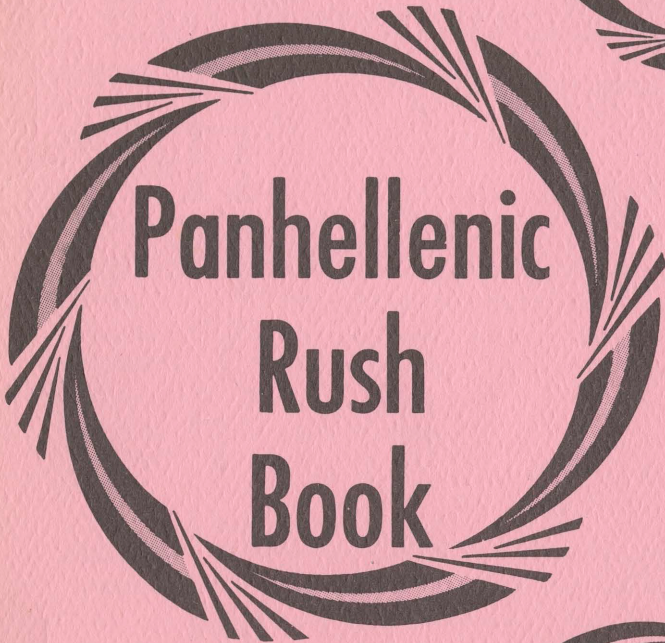


OFFICE COPY



Greek Alphabet

Α ALPHA

Β BETA

Γ GAMMA

Δ DELTA

Ε EPSILON

Ζ ZETA

Η ETA

Θ THETA

Ι IOTA

Κ KAPPA

Λ LAMBDA

Μ MU

Ν NU

Ξ XI

Ο OMICRON

Π PI

Ρ RHO

Σ SIGMA

Τ TAU

Υ UPSILON

Φ PHI

Χ CHI

Ψ PSI

Ω OMEGA

The Panhellenic Creed

Adopted 1966

WE, THE UNDERGRADUATE MEMBERS of women's fraternities stand for good scholarship, for guarding of good health, for maintenance of fine standards, and for serving, to the best of our ability, our college community. Cooperation for furthering fraternity life, in harmony with its best possibilities, is the ideal that shall guide our fraternity activities.

WE, THE FRATERNITY WOMEN OF AMERICA, stand for service through the development of character inspired by the close contact and deep friendship of individual fraternity and Panhellenic life. The opportunity of wide and wise human service, through mutual respect and helpfulness, is the tenet by which we strive to live.

1972 Panhellenic Officers

PRESIDENT	Claudia Grossnicklaus
VICE-PRESIDENT	Mary Delaurenti
RUSH & DELEGATE COOR.	Holly Rogers
SECRETARY	Kris Lednicky
TREASURER	Wendy Dean
ASST. RUSH & DELEGATE COOR.	Ingrid Haas
ADVISOR TO JR. PANHELLENIC	Dinah Schild
SOCIAL CHAIRMAN	Nancy Congleton
ASOSU CABINET REP.	Carol Pidgeon
PUBLIC RELATIONS CHAIRMAN	Julie Sperr
HOUSING REPRESENTATIVE	Sue McGinty
EDITOR	Gay Severson
PICTURES	Jim Edmunson

Table of Contents

Greek Alphabet	Inside Front Cover
Panhellenic Creed	1
Panhellenic Officers	2
Welcome from Panhellenic President and Advisor	3
The Sorority Life-Style	4
What is Panhellenic	5
What is Rush Week	5-6
Guideposts to a Wise Choice	6-7
Responsibilities and Obligations of Pledging a Sorority	8
Rushing Rules	9-11
Initiation Requirements	11
Rushee's Webster	12-13
The Quota Limitation System	13
Campus and Dressy Dress	14
Casual and Grubby Dress	15
How to Register	16
When You Arrive	16-17
Summer Orientation	17
Additional Rush Information	17
Sorority Financial Averages	18
Sorority Pictures	19-33
Rush Schedule	34
Rush Registration Card	35
Sororities at OSU	Back Cover

Dear Rushee,

Welcome to Oregon State University! We, as sorority women are looking forward to meeting you. Rush offers the opportunity to make new friends and acquaints you with the different aspects of sorority life.

We have fifteen national sororities at OSU. During rush week you will have the opportunity to visit each sorority, meet individual members, and carefully evaluate what they have to offer. Choosing a sorority is a process of mutual agreement between you and the sorority. You will decide where you would be the happiest, feel most comfortable, make best use of your talents, and which sorority offers most to you. There will probably be more than one in which you would be happy, so consider them all carefully.

Come with an open mind, lots of enthusiasm, and be prepared for a fun and tiring yet memorable week.

The Panhellenic Officers and Delegates are more than willing to meet you and help you should any problem arise. Please feel free to ask questions at any time.

We wish you the best of luck and will see you in September.

Claudia Grossnicklaus
Panhellenic President

Oregon State University is proud of its many and varied types of approved living groups — residence halls, sororities and cooperatives. The University considers them an integral part of the total campus scene. We feel it is important for you to have alternative housing possibilities so that you may select the one most suitable for your individual needs and interests.

Sororities provide a small group living experience for many women students. Each individual sorority has much to offer just as you have much to offer a living group. Should you decide to pledge we trust you will have weighed your decision carefully in light of what your contribution to the sorority will be. Should you choose not to pledge we hope you will have benefitted from the contact during rush with other women students, new and returning to OSU.

We look forward to your participation in Rush, 1972-73. If, after reading this handbook, you or your parents have any questions, please write, call or come in to see us.

Kay Conrad
Assistant Dean of Students and
Adviser to Panhellenic

The Sorority Life-Style

Sororities extend opportunities for the development of the woman — intellectually, socially and spiritually. She in turn, shares her own talents with her sorority. A girl doesn't become what her house is, but rather, that house becomes what she is. The result is a rewarding give-and-take experience.

Sorority living offers you a unique involvement with other women through that very special interpersonal relationship called sisterhood: the one quality that makes our life-style so unique. Sisterhood is a learning experience that means consideration, respect and cooperation. It is the bond between the deepest and truest of friends. It makes the sorority environment one in which you may find and maintain your values and your identity within a world of changing demands and standards.

All sororities strive to widen the intellectual horizons and inspire the cultural interests of their members. By stressing high scholastic standards, and a well-rounded social life, sororities have established themselves as an integral part of the OSU community. Leadership development is promoted through the responsibilities of sorority living. The art of knowing people and the ability to live and interact with them successfully is still another vital aspect in the process of your personal growth.

Sorority living is more than a sorority house where you eat and sleep and collapse between classes. It is more than the pin you wear, and more than just having fifty acquaintances to say "Hi" to on campus. It is more still than house dances, exchanges, and parties that make up the social collage . . . Sorority living is people — living and giving. Each woman will offer you something different, uniquely her own, but equally valuable. All of your talents are put to use; you might even discover a few new ones. Sorority living is preparation, learning, giving, receiving . . . and fun.

What is Panhellenic?

Sororities are actually national fraternities for women and are a recognized, long established and important part of college life on many college campuses in the United States and Canada.

The inter-sorority organization called Panhellenic governs the inner working of rushing and sororities. The name "Panhellenic" is derived from the Greek roots, "Pan," meaning "all," and "Hellenic" meaning "Greek." Panhellenic therefore is an organization of all Greek women.

As soon as you pledge a sorority, you become a member of Panhellenic. Until you pledge and while you are a rushee, Panhellenic will give you useful information on all sororities and will answer all personal questions which arise during Rush Week. During Formal Rush contact Panhellenic in Room 213 in the Memorial Union or a Panhellenic Delegate as soon as you have a question to ask. During informal rush contact Panhellenic office, Adm. S. A218. It is here, and not from the other rushees in the halls, that you will get the correct answer. Panhellenic workers are impartial authorities on what to do and how to do it.

What Is Rush Week

Rush Week is a period during which Greek women entertain potential sorority women, or "rushees," in the hope that they will get to know many rushees personally, and that the rushees will become acquainted with them and with their sororities.

It is the desire of Panhellenic, and each individual member of the sororities, that each girl who is interested in belonging to a sorority will find the niche that fits her personal needs.

During the rushing period, the members of each sorority will be talking enthusiastically about their own group. They do not do this because of disregard for other groups, but because they are in a position to give information only about their own. If at any time you want unbiased official information, go to the Panhellenic Rush Office Room 213 in the Memorial Union, or ask a Panhellenic Delegate.

Regulations concerning rushing are formulated and agreed upon by Panhellenic, and all sorority women are familiar with them. All these specific rules and regulations are designed by Panhellenic to help each rushee make her own decision when the time comes for signing of pledge cards.

Guideposts To A Wise Choice

As in most cases where a decision must be made, much free advice will find its ways to your ears, some of it helpful, but most of it only adding to your confusion. What can you do about this situation? How can you pick out with certainty and an open mind the sorority which will provide a happy college home?

Some of the guideposts Panhellenic has found most valuable to a successful choice include the following:

Choose a sorority that offers you opportunities for enduring friendships. Do not be swayed by material possessions, a new sorority house, or other outward displays. Choose a group with which you feel at ease.

Choose a group in which you feel you will work energetically and congenially on the solution of its problems.

Do not fall for high pressure salesmanship.

If you decide not to pledge a sorority at this time, you may be interested in Informal Rush. Informal Rush begins immediately following the closure of Formal Rush and continues throughout the school year. For information contact the Panhellenic office in the Administrative Services Building, Room A218.

There are many people on campus who are there to help you make your decision. Among them are the Associate Dean of Students and the Assistant Dean of Students (Panhellenic Adviser) who will be counseling during rush in the M.U. and are available at other times in their office in the Administrative Services Building A200.

As a rushee you'll probably have questions about sorority living. You may not know what to ask to find out more about what's important to you in your final choice. Panhellenic has compiled this list of topics in the hope that it will give you some ideas and will make rush easier for you.

Why are you in a sorority? How has sorority living benefited you?

What is your Big Sister program?

What are the financial obligations of a pledge; of a member?

What kind of functions do you have? Service projects, exchanges, special banquets, workshops, campus activities, etc.

Which functions are required?

What are your academic requirements.

What is your scholarship program?

What are pledge duties?

What are your initiation requirements?

Responsibilities & Obligations Of Pledging A Sorority

When you, as a rushee, consider pledging a sorority, think about it carefully. Membership in a sorority should be taken seriously.

Sorority membership can be a very rewarding experience for those who will accept the challenge and are willing to devote the time and effort required to receive the benefits from it. Belonging to a sorority helps to develop and prepare a member for life after college. Learning to live and cooperate with others, self discipline, leadership ability, social etiquette, and the making of lifetime friends are some of the benefits gained from sorority affiliation and Greek living.

But let's not forget the "give" side. You only get out of sorority life what you put into it. It does take time, especially your freshman year as a pledge. Most sorority activities take place at the chapter house; a lot of these will be required for pledges, while some will be optional. This is where self discipline enters; you must budget your time to be able to participate in social, campus, and sorority activities without sacrificing studying.

Most Greek women are able to balance their time to participate in campus activities, honoraries, sorority and classroom activities effectively.

When a pledge is initiated into full membership in a sorority, she assumes greater responsibility in the group. Living in the chapter house for the remaining years of her college days requires that some adjustments be made; it is well worth it for the benefits gained. It is an exciting challenge and a wonderful opportunity for those who are willing to accept the obligations and responsibilities involved.

Panhellenic urges you to think seriously when making the decision to join and do not hesitate to ask the Panhellenic officers, the delegates or any of the other sorority women any questions you might have.

Rushing Rules

Eligibility for Rushing

A student may be rushed who:

- a. has been officially admitted to OSU* in good standing, or
- b. has completed 12 or more quarter hours of previous college work with a 2.00 accumulative college GPA and is not on academic probation for the previous term. Individual sororities may set higher requirements for pledging.

Formal Rush

1. During a formal rush period, no student may be rushed who has not paid the rush registration fee and whose name does not appear on the rush list. All students who wish to rush must have registered and paid the rush fee before September 1st preceding the formal rush period.
2. There shall be meetings of all rushees to explain rush rules and procedures prior to each formal rush period.
3. Panhellenic, with the approval of its adviser, will set the ceiling limitation during spring term and quota at the beginning of formal rush.
4. Silent period is the time during which sorority members may wear pins and talk in passing on campus to rushees, but no coke dates or meetings between rushees and affiliated women are allowed. Silent period begins rush week upon arrival in Corvallis and remains in effect on and off campus until ribbon pledging at the end of formal rush. Sorority members may not go to residence halls and may not telephone rushees. (If absolutely necessary, a sister of a girl in a sorority may be an exception.) If communication with a rushee is necessary, contact the Panhellenic Office.
5. No affiliated women except Panhellenic officers and delegates and residence hall advisers and officers, without pins and other fraternal identification, may go into an independent living group during silent period.
6. Panhellenic delegates and officers, residence hall advisers, and Panhellenic officers cannot wear or display any sorority insignia or emblems until after fall term ribbon pledging.

* OSU Admission GPA placed on rush list.

7. Absolutely no form of rushing, other than specified parties, is to take place during formal rush periods.
8. Beginning with the return to campus in the fall and for the duration of the silent period affiliated women may not double date with or arrange dates for rushees.
9. During formal rush, rushees are not to attend any functions with affiliated women other than sorority rush parties.
10. There shall be no "hot-boxing" permitted during any Panhellenic rush period, formal or informal. "Hot-boxing" shall be defined as the pressuring of a rushee through any individual or group conference conducted by one or more members of a sorority for the purpose of promoting or degrading a specific sorority.
11. Themes, decorations, or favors (napkins, place cards, name-tags, etc.) used at formal rush functions cannot be taken from the chapter house by rushees until formal rush has ended.
12. Sorority members and pledges only may present entertainment at rush parties. (Houseboys may serve refreshments only.) Alumnae and actives from other chapters are considered sorority members.
13. Rushees are **required** to accept the maximum number of invitations possible on the 9-party and 6-party days of rush.
14. Rushees **must** attend accepted preference parties unless ill or excused by the Panhellenic Office. Nonattendance may drop them from rush.
15. Names of pledges at the end of the formal rush period shall be released for publication by the Panhellenic Office only.
16. Lost and found items should be turned in to the Panhellenic Office, MU 213.
17. College chapters will be held responsible for any infraction of rush rules by their respective alumnae groups, individual college and alumnae members, and resident advisors.
18. Any infraction of these rush rules should be reported in writing with specific information, including the names of the persons involved in the offense, within one week of the alleged infraction to the Panhellenic Office and will be dealt with the Panhellenic Judiciary Committee according to OSU or NPC recommended procedure.

19. If there are any questions concerning rush policies or procedures, write to the Panhellenic President, Summer Secretary, or Associate Dean of Students, Ad. S. A218, Corvallis, Oregon 97331.
20. Additional rush rules for formal and informal rush periods shall be set by the Panhellenic Council preceding the respective periods.

Informal (Open) Rush

1. Sororities whose full membership, members and pledges, does not exceed their ceiling limitation or sororities who have not filled their pledge quota may hold informal rush and pledging during the year. (Details will be announced through the Barometer, the school paper.)
2. To be eligible to be pledged in an informal rush period, a rushee must fulfill the scholastic requirements set for formal rush.
3. Payment of the formal rush fee entitles a student to rush privileges for the academic year (September to June). A student who did not participate in formal rush must pay her rush registration fee at the time her pledge card is signed in the Panhellenic Office.
4. If a girl has broken her pledge or has had her pledgeship broken by a sorority, she is not eligible to rush for one calendar year from the date of broken affiliation.
5. A student is not officially pledged until the Panhellenic Office has on file her signed pledge card and she has paid her rush fee.
6. The pledge card and rush fee must be turned in to the Panhellenic Office within 48 hours of pledging.
7. Lists of students pledged during informal rush shall be released for publication by the Panhellenic Office following the informal rush period each term.

Initiation Requirements

Initiation requirements for all sororities shall be established by the individual houses.

Rushee's Webster

- ACTIVE** — A girl who has completed her period of pledgship and who has been initiated into her sorority.
- AFFILIATED** — Any student who is a pledge or a member of a Greek organization.
- ALUMNAE** — Initiated sorority women who have graduated or who have withdrawn from college.
- BID** — The official invitation to become a pledge of a sorority.
- BLUE CARDS** — A way a rushee can indicate she is still interested in a house.
- CAMPUS DRESS** — School clothes: the type of attire worn to classes and most rush parties. Campus dress will be worn Tuesday and Wednesday, to open houses. (See page 14.)
- CASUAL DRESS** — Pants or pant skirts; the type clothes worn Friday. (See page 15.)
- CAR POOL** — Cars appropriately identified will be available to transport rushees to and from convocation on Tuesday evening.
- CHAPTER** — The local group that is part of a national organization. It may be Alpha chapter of Beta Beta Beta.
- DRESSY DRESS** — The type of dress worn to church and the dress worn to preference parties Sunday. (See page 14.)
- GRUBBY DRESS** — Cords, good jeans, smock tops, etc. worn Saturday.
- EXCHANGE** — Dinner or dessert dates where a fraternity and sorority get together.
- FORMAL RUSH** — The period of rush which is scheduled through Panhellenic and where every rushee visits every sorority at least once. All rush parties are planned through Panhellenic.
- GREEK** — The name applied to all fraternity and sorority members. This name is used because their organizations identify themselves by Greek letters.
- INVITATION CARDS** — An invitation from a sorority to its next rush party.
- LEGACY** — A daughter or sister of an alumna or a sorority girl. During rush week, legacies receive the same consideration as any rushee.
- M.U.** — The center of all campus activities is called the Memorial Union or the M.U.

PANHELLENIC DELEGATE — A sorority member who is trained by Panhellenic to help during Rush Week. She will live with you in the residence hall and will be available through Rush Week to help you with your questions and problems.

PLEDGE — A girl who has accepted the bid of a sorority and has participated in their pledge ceremony.

PLEDGE CARD — Card signed on Preference Day finalizing intention to accept an invitation to pledge a sorority.

PREFERENCES — The sororities you put on the preference card as your first, second, and third choices. Panhellenic urges you to have three choices if at all possible.

RUSHING — Time and events that sororities plan for gaining new members.

RUSH PERIOD — A series of parties where you visit the various sororities and choose the one or ones that you prefer.

SILENT PERIOD — Starting from your arrival on campus and continuing through the formal rush period, contact with sorority women other than a scheduled rush party may not be made.

WEATHER — Unpredictable. It would be wise to include rain gear and an umbrella in your wardrobe.

The Quota-Limitation System

Each sorority is limited in its total membership and, therefore, in its total number of pledges per year by what is called a quota-limitation system.

Each year the Oregon State University Panhellenic establishes a new pledge quota for sorority membership. The number of pledges allowed each chapter is determined by the total number of girls interested in sorority membership.

This quota-limitation system should not influence in any way your choice of a sorority. The reasons for following such a system have been given by the National Panhellenic Conference. The Oregon State University Panhellenic wants you to know and understand these reasons.

- A strong Panhellenic is possible only when all chapters are of similar size and strength.
- Size is not actually a criterion of strength, and quota-limitation systems affirms the welfare of all chapters.



CAMPUS DRESS

Campus dress will be worn to the Tuesday and Wednesday Parties.

DRESSY

Dressy dresses will be worn to Sunday Preference Parties.





CASUAL DRESS

Casual dress will be worn on Friday.

RAIN WEAR

A must at OSU!



How To Register

September 1 is deadline

1. Complete the registration card found in the back of this booklet. Mail this completed card with a check or money order for \$10.00 payable to OSU Panhellenic, to Panhellenic Council, c/o Associate Dean of Students Office, Adm. S. A218, Oregon State University, Corvallis, Oregon 97331.
2. Panhellenic policy states that sorority houses with space to accommodate freshmen pledges may do so immediately upon pledging at the end of fall formal rush. However, freshman women are advised that such space is **very** limited, and to insure housing of the type most desired, it is best to have a residence hall contract. For housing information, contact Dept. of Housing. Your permanent hall assignment will also be your rush week assignment. Contracts may be terminated at term end upon submission of application to move into a sorority. All freshmen not living at home are required to live in University approved housing.
3. Sophomore and junior rushees are strongly advised to rush without a housing contract if desiring to move directly into the sorority house fall term. If you have not signed a housing contract and you pledge a sorority, you may move directly into the house. If you choose not to pledge, university approved housing will be available for which you may make contractual arrangements. Upperclass room and board fees for rush week are \$36.00 in addition to \$10.00 rush fee.
4. The deadline for rush registration is September 1, 1972. Late registration will be considered, but not guaranteed.
5. If, for some unavoidable reason, such as illness, you are unable to come for rush, the room and board fee of \$36.00 will be refunded up to September 10, 1972. The Panhellenic rush fee (\$10.00) is refundable until September 1, 1972.

When You Arrive

When freshmen arrive on campus September 22, 1972, you should report to your permanent hall assignment if you have one. All others and upperclassmen report to MU 213 for your rush week room assignment. All meals for rush will be served in your adjacent dining hall.

Please try to arrive in late morning or early afternoon of September 19. The first meeting for rush is scheduled for 4:30 p.m. in MU Rooms.

Summer Orientation — Advising

All freshmen participating in fall formal rush are urged to take advantage of the Summer Orientation-Advising and Registration Program. There are six sessions, of two days each: July 10-11; 13-14; 17-18; 20-21; 24-25; 27-28. Several sorority houses will be open for tours during each session. If you have any questions about OSU's Summer Program please write to:

Office of New Student Programs
Oregon State University
Ad. S. 220
Corvallis, Oregon 97331

Additional Rush Information

1. **Read this Handbook carefully from cover to cover.** Refer to it often for answers to your questions that arise. **Be sure to bring this Booklet with you for Rush.**
2. Read the rushing rules and know them well.
3. Wear your Panhellenic nametag to all rush parties.
4. Attend all rush parties you sign up for. If you become ill and cannot attend, call the Panhellenic office, NOT the sorority house.
5. Dress simply and in good taste. Remember most high fashion is simple.
6. Be on time. If you are late, do not apologize more than once.
7. Don't adopt a new personality for rush week. Your natural one is the one the sorority is interested in.
8. Don't make disparaging remarks about a sorority. You may be talking to a girl who is very interested in that sorority or has friends or relatives who are members.

9. Don't discuss your preference. Rush is a personal concern and your own decision.
10. Pay no attention to rumors. Find out the real facts by going to the Panhellenic office.
11. Don't let anyone high pressure you. Make your own decision.
12. Above all **Relax and be yourself.**

Sorority Financial Averages

SORORITY PLEDGE LIVING OUT

	Yearly Expense		Monthly Expense	
	Avg.	Range	Avg.	Range
Pledge Fees*	\$ 18	\$ 15 - \$ 25	Lump Sum	
Initiation*	74	58 - 90	Lump Sum	
Building Fund**	92**	45 - 156	\$ 10**	\$ 5 - \$25** til pd.
Dues & Miscellaneous*** (includes certain meals)	146	105 - 179	16	
Total Sorority Expense (including building fund)	\$ 332	\$ 262 - \$ 424	\$ 26	Not including lump sum pledge & initiation fees.
Total Hall Expense	\$ 956	\$ 935 \$ 973	\$106	
Combined Expenses for Pledge Living in Hall	\$1288	\$1197 - \$1397	\$132	Not including lump sum pledge & initiation fees.

SORORITY PLEDGE LIVING IN

	Yearly Expense		Monthly Expense	
	Avg.	Range	Avg.	Range
Pledge Fees*	\$ 18	\$ 15 - \$ 25	Lump Sum	
Initiation*	74	58 - 90	Lump Sum	
Building Fund**	92**	45 - 156	\$ 10**	\$ 5 - \$ 25** til pd.
Dues & Miscellaneous***	74	54 - 102	8	6 - 11
Board & Room	\$ 926	\$876 - \$1014	\$103	98 - 113
Total Expenses for Pledge Living In House	\$1184		\$121	Not including lump sum pledge & initiation fees.

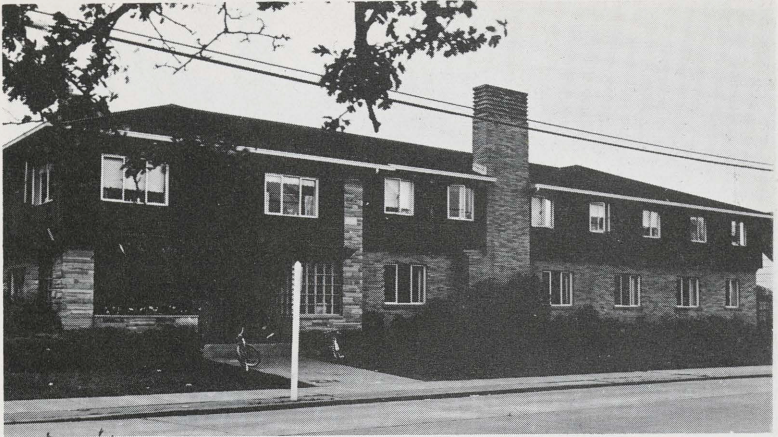
*Paid one time only, at time of pledging or initiation respectively.

**Methods for paying building funds vary greatly from house to house. Six houses require bond the first year; others pay monthly all four years.

***More for pledges living out because of extra meals, etc.; for the pledge living in these charges are part of her room and board payment.

SORORITY MEMBER LIVING IN

	Yearly Expense		Monthly Expense	
	Avg.	Range	Avg.	Range
Second Year Expense (including building fee)	\$1034	\$948 - \$1085	\$115	\$105 - \$121
Third Year Expense (including building fee)	\$1011	\$938 - \$1068	\$112	\$104 - \$119
Fourth Year Expense (including building fee)	\$ 997	\$938 - \$1068	\$111	\$104 - \$119



ALPHA CHI OMEGA

"Alpha Chi's"

Impressions:

Founded: October 15, 1885

Established on the Oregon State Campus: March 19, 1915

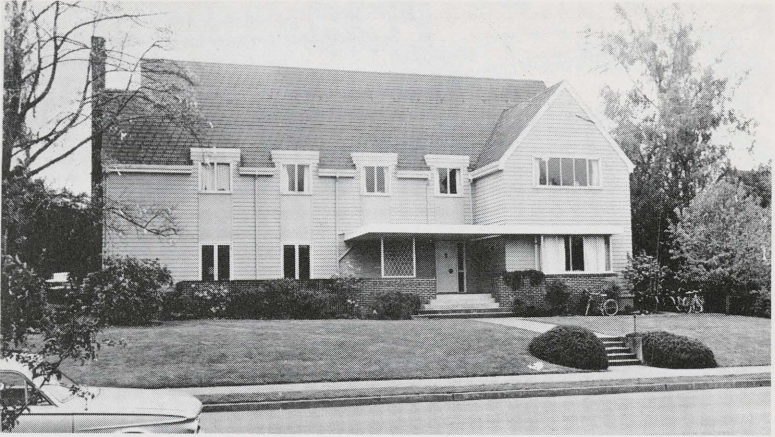
President: Jill Wissler

Rush Chairman: Linda Harrington

Flower: Scarlet Carnation

Colors: Scarlet and Olive Green

House Mother: Mrs. Ida Kenoyer



ALPHA DELTA PI

"A D Pi's"

Impressions:

Founded: May 15, 1851

Established on the Oregon State Campus: October 16, 1926

President: Judy Grabler

Rush Chairman: Carol Pidgeon

Flower: Purple Violet

Colors: White and Azure Blue

Housemother: Mrs. Mildred Maxwell



ALPHA GAMMA DELTA

"Alpha Gam's"

Impressions:

Founded: May 30, 1904

Established on the Oregon State Campus: May 21, 1921

President: Mary Weese

Rush Chairman: Cathy Knierim

Flower: Red and Buff Roses

Colors: Red, Buff, and Green



ALPHA OMICRON PI

ALPHA OMICRON PI "A O Pi's"

Impressions:

ALPHA OMICRON PI

Founded: January 2, 1897

Established on the Oregon State Campus: June 5, 1926

President: Pat Bentley

Rush Chairman: Jan Shandera

Flower: Jacqueminot Rose

Colors: Cardinal

Housemother: Mrs. Ernestine Wheeler



ALPHA PHI

"Phi's"

Impressions:

Founded: October 10, 1872

Established on the Oregon State Campus: 1947

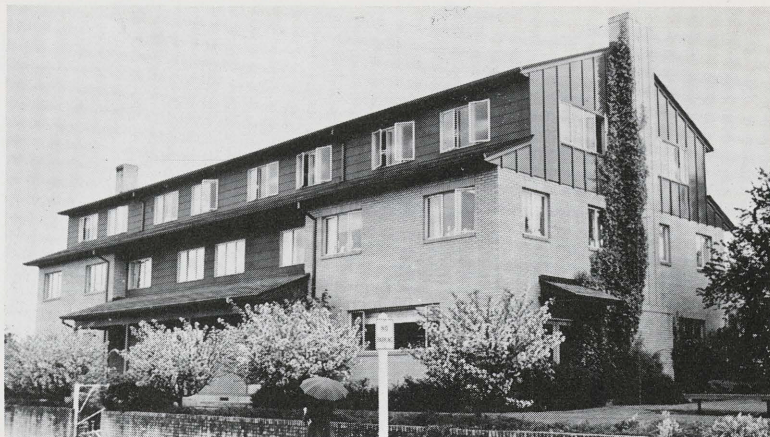
President: Claudia McKinnon

Rush Chairman: Anna Mooney

Flower: Forget-Me-Not

Colors: Silver and Bordeaux

Housemother: Mrs. Charlyne Dern



CHI OMEGA

"Chi O's"

Impressions:

Founded: April 5, 1895

Established on the Oregon State Campus: October 6, 1917

President: Carolyn Clark

Rush Chairman: Robin Symank

Flower: White Carnation

Colors: Cardinal and Straw

Housemother: Mrs. Rae Anderson



DELTA DELTA DELTA

"Tri Delts"

Impressions:

Founded: Thanksgiving Eve, 1888

Established on the Oregon State Campus: December 8, 1918

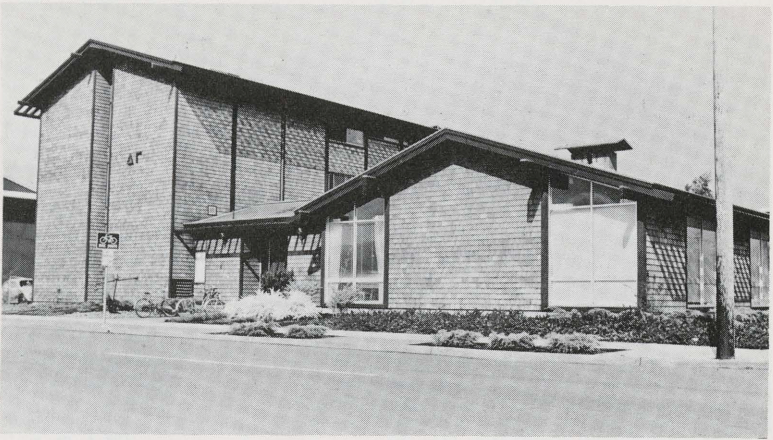
President: Kathy Kunkel

Rush Chairman: Kyle Bruce

Flower: Pansy

Colors: Silver, Gold, and Blue

Housemother: Mrs. Dorothy Reed



DELTA GAMMA

"D G's"

Impressions:

Founded: December, 1873
Established on the Oregon State Campus: 1946
President: Jan Smith
Rush Chairman: Tracy Rhomberg
Flower: Cream Rose
Colors: Bronze, Pink, and Blue
Housemother: Mrs. Virginia Bailey



DELTA ZETA

"D Z's"

Impressions:

Founded: October 24, 1902

Established on the Oregon State Campus: April 25, 1919

President: Sue Gill

Rush Chairman: Rayleen Wright

Flower: Killarney Rose

Colors: Old Rose and Nile Green



GAMMA PHI BETA

"Gamma Phi's"

Impressions:

Founded: November 11, 1874

Established on the Oregon State Campus: April 26, 1918

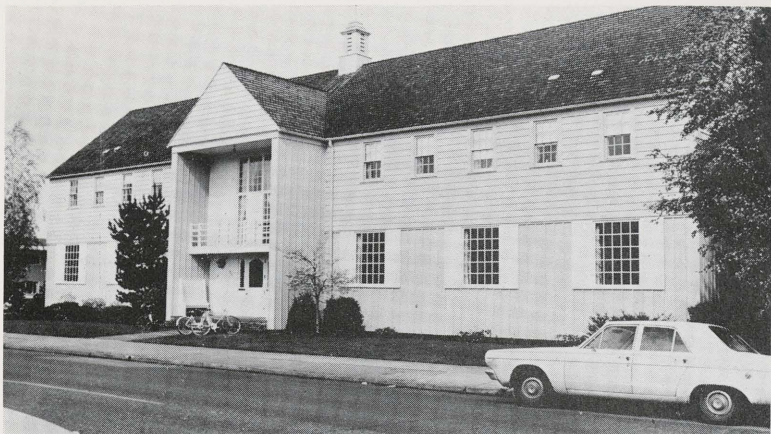
President: Patsy Pearson

Rush Chairman: Sue Aitken

Flower: Pink Carnation

Colors: Brown and Mode

Housemother: Mrs. Mary Hutchins



KAPPA ALPHA THETA

"Theta's"

Impressions:

Founded: January 27, 1870

Established on the Oregon State Campus: November 10, 1917

President: Wendy Rathbun

Rush Chairman: Marcia Teutsch

Flower: Pansy

Colors: Black and Gold

Housemother: Mrs. Tressie E. Winkles



KAPPA DELTA

"KD's"

Impressions:

Founded: October 23, 1879

Established on the Oregon State Campus: October 16, 1926

President: Deby Dillon

Rush Chairman: Diana VanOrden

Flower: White Rose

Colors: Olive Green and Pearl White

Housemother: Mrs. Gladys F. Carson



KAPPA KAPPA GAMMA

"Kappa's"

Impressions:

Founded: October 13, 1870

Established on the Oregon State Campus: June 7, 1924

President: Lynn Lee

Rush Chairman: Claire Hartley

Flower: Fleur-de-lis

Colors: Sky and Sea Blue

Housemother: Mrs. Thelma Lee



PI BETA PHI

"Pi Phi's"

Impressions:

Founded: April 28, 1876

Established on the Oregon State Campus: May, 1917

President: Jenna Dorn

Rush Chairman: Kay Harris

Flower: Wine Carnation

Colors: Wine and Silver Blue

Housemother: Mrs. Alice Forster



SIGMA KAPPA

"Sigma Kappa's"

Impressions:

Founded: November 9, 1874

Established on the Oregon State Campus: May 31, 1918

President: Shalline Vernon

Rush Chairman: Becky Jo Morfitt

Flower: Violet

Colors: Lavender and Maroon

Housemother: Mrs. Alice McCarthy

FALL FORMAL RUSH SCHEDULE — 1972-73

Tuesday, September 19

4:30- 5:10 p.m. Meet with Delegates
in MU Rooms
(Check MU 213 for assignment)
5:30- 6:00 1st Party: Campus
Dress — 30 minute
Open Houses
6:10- 6:40 2nd Party
6:45- 8:15 Break for ASOSU Con-
vocation: Gill Col.
8:20- 8:50 3rd Party
9:00- 9:30 4th Party
9:40-10:10 5th Party
10:20-11:50 6th Party
11:00-11:30 7th Party

1:10- 1:45 5th Party
1:55- 2:30 6th Party
2:40- 3:15 7th Party
3:25- 4:00 8th Party
4:10- 4:45 9th Party
4:55- MU Rooms for Blue
Carding
5:00- 6:00 Dinner
11:15-12:00 MU Rooms for In-
vitation Accepting

Wednesday, September 20

4:30- 5:00 p.m. Meet in MU Room
5:15 5:45 8th Party
5:55- 6:25 9th Party
6:35- 7:05 10th Party
7:15- 7:45 11th Party
7:55- 8:25 12th Party
8:35- 9:05 13th Party
9:15- 9:45 14th Party
9:55-10:25 15th Party
10:35-11:05 16th Party
11:15 Blue Carding - MU
Rooms

Saturday, September 23

8:30- a.m. Meet in MU Rooms
for Party Schedules
9:00- 9:45 First Party - Nice
Grubbies — 45 min-
ute parties
9:55-10:40 2nd Party
10:50-11:35 3rd Party
11:45-12:30 4th Party
12:35- 1:20 p.m. Lunch
1:30- 2:15 5th Party
2:25- 3:10 6th Party
3:20- 4:05 MU Rooms for Blue
Carding
11:15-12:00 MU Rooms for In-
vitation Accepting

Thursday, September 21

Registration 8 a.m. - 6 p.m.
10 p.m. Rushees accept invitations. MU
Rooms.

Friday, September 22

8:30- a.m. Meet in MU Rooms
for Party Schedules
9:00- 9:35 1st Party - Casual
Dress — 35 minute
parties
9:45-10:20 2nd Party
10:30-11:05 3rd Party
11:15-11:50 4th Party
12:00- 1:00 p.m. Lunch

Sunday, September 24

12:30- p.m. Meet in MU Rooms
for Party Schedules
1:00- 1:50 1st Party (Preference
Day): Dressy Dress —
50 minute parties
Progressive Dinner
2:05- 2:55 2nd Party
3:10- 4:00 3rd Party
4:15- 5:30 MU Rooms — Rushees
Preference

Monday, September 25

12:15- p.m. Meet in MU Rooms
for Bids!

RUSH REGISTRATION INSTRUCTIONS

1. Fill out the registration card using the name by which you have registered at OSU. Please print in ink or type.
2. Enclose card with a check or money order for \$10.00 Rush fee, payable to Panhellenic Council. Upperclassmen without contracts enclose \$46.00 (\$36.00 room and board fee plus \$10.00 Rush fee).
3. Address to OSU Panhellenic Council, c/o Associate Dean of Students, Ad. S. 218, OSU, Corvallis, Oregon 97331.

Registration Deadline is September 1, 1972*

PANHELLENIC REGISTRATION

For Office Use Only

Name Last First Middle Age
Home Address No. Street
City State Zip Telephone
Name of Parent or Guardian
High School Attended City State
Previous College Attended City Yr. in College OSU School
Entrance Grade Point: High School Previous College OSU Cum. GPA
Date Rec'd GPA
Receipt No. List No.

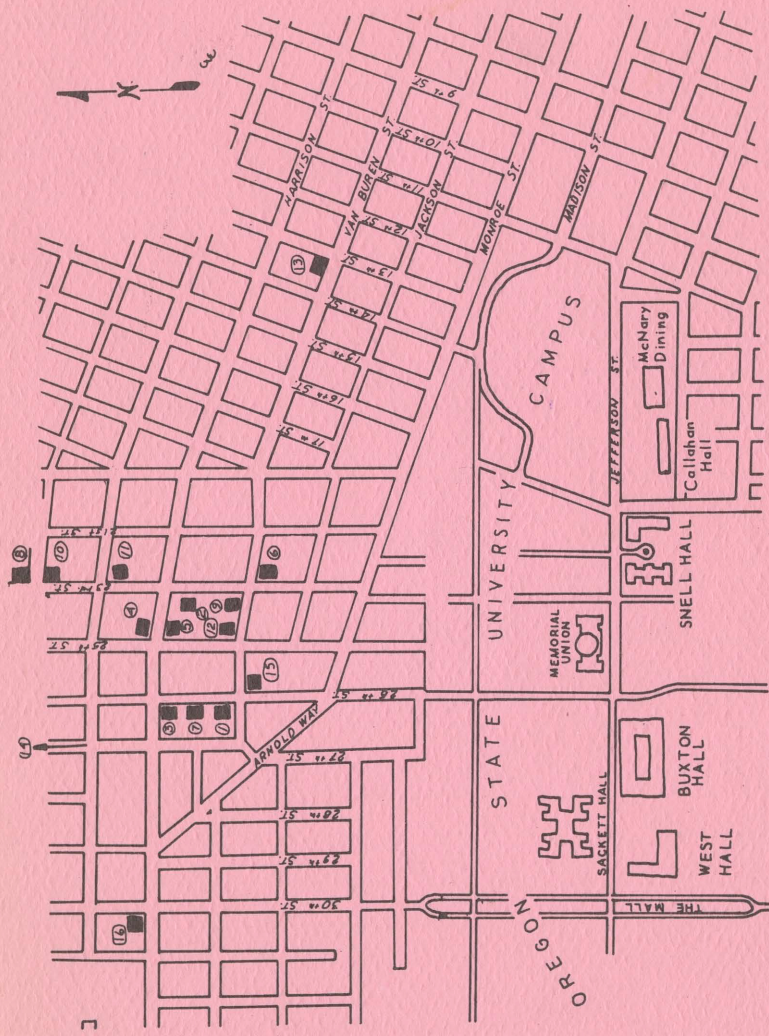
City State Zip Telephone
Name of Parent or Guardian
High School Attended City State
Previous College Attended City Yr. in College OSU School
List major High School and College Activities on the reverse side.
Entrance Grade Point: High School Previous College OSU Cum. GPA
Sorority affiliation of mother or sister, if any
Enclosed: \$46.00 Registration and Room and Board Fee
\$10.00 Registration only () M. O. () Check

I authorize Panhellenic to make my grades and information on this card available to all the sororities.

..... Date Signature of Student

*Late registrations will be considered, but not guaranteed.

Detach Here



- | | | | |
|----------------------|----------------------|-----------------------|-----------------------|
| 1. ALPHA CHI OMEGA | 5. ALPHA PHI | 9. DELTA ZETA | 13. KAPPA KAPPA GAMMA |
| 2. ALPHA DELTA PI | 6. CHI OMEGA | 10. GAMMA PHI BETA | 14. PI BETA PHI |
| 3. ALPHA GAMMA DELTA | 7. DELTA DELTA DELTA | 11. KAPPA ALPHA THETA | 15. SIGMA KAPPA |
| 4. ALPHA OMICRON PI | 8. DELTA GAMMA | 12. KAPPA DELTA | 16. ZETA TAU ALPHA |