

OREGON STATE
UNIVERSITY

74-75

ΣΠ-Τ-ΠΟΠΟΣ
ΣΟΡΟΡ-Τ-ΠΟΠΟΣ
ΣΠ-Τ-ΠΟΠΟΣ

The Panhellenic Creed

WE, THE UNDERGRADUATE MEMBERS of women's fraternities, stand for good scholarship, for guarding of good health, for maintenance of fine standards, and for serving, to the best of our ability, our college community. Cooperation for furthering fraternity life, in harmony with its best possibilities, is the ideal that shall guide our fraternity activities.

WE, THE FRATERNITY WOMEN OF AMERICA, stand for service through the development of character inspired by the close contact and deep friendship of individual fraternity and Panhellenic life. The opportunity of wide and wise human service, through mutual respect and helpfulness, is the tenet by which we strive to live.

Panhellenic Rush Book

1974 - 1975

Panhellenic Council Officers

President	Teri Troxclair
Vice President	Sue Hudson
Rush & Delegate Coordinator	Joan Thompson
Secretary	Gayle Daggett
Treasurer	Inge Pihl
Assistant Rush & Delegate Coordinator ..	Mary Ann McKee
Activities Co-Chairmen	Cheryl Heintz & Lisa Holbert
Public Relations	Nancy Weiss
Publicity	Holly Braun
ASOSU Representative	Debbie Faltys
Greek Advisory Committee	Megan Maves

Edited by Holly Braun

Handbook of the
Oregon State University Panhellenic Council
A218 Administrative Services Building
Oregon State University
Corvallis, Oregon 97331

Table of Contents

The Panhellenic Creed	Cover II
Panhellenic Council Officers	1
Teri Troxclair, Panhellenic President	3
Kay Conrad, Advisor to Panhellenic	4
What Is Panhellenic?	5
Sororities — What Are They?	6
Pledgeship	7
Initiation	8
Greek Alphabet	9
Alpha Chi Omega	10
Alpha Delta Pi	11
Alpha Gamma Delta	12
Alpha Omicron Pi	13
Alpha Phi	14
Chi Omega	15
Delta Delta Delta	16
Delta Gamma	17
Delta Zeta	18
Gamma Phi Beta	19
Kappa Alpha Theta	20
Kappa Delta	21
Kappa Kappa Gamma	22
Pi Beta Phi	23
Sigma Kappa	24
Finances	25
The Quota-Total System	26
Rushing Rules	27
Formal Rush Procedure	27
Informal Rush Procedures	28
Details on Registering for Rush	28
Summer Orientation and Advising Programs	30
Fall Formal Rush Regulations	30
Special Tips for Rushees	31
Greek Glossary	31
OSU Panhellenic Fall Rush Schedule	33
Map of OSU Campus	34
Registration Form	35



Teri Troxclair

Hello, and welcome to Oregon State University. As you begin your college career, many doors will open with opportunities that cover many areas. One of these opportunities will be that of sorority living.

Rush, whether it be formal or informal, allows you and the sorority to become acquainted. Each of our fifteen sororities has much to offer. We encourage you to rush with an open mind. An invitation to pledge a sorority is one of mutual agreement. Yet, the choice is yours alone. Sorority living is based on group sharing, learning,

friendship. It is a wonderful experience.

Regardless of the sorority you do pledge, it will be your home for your college life. Fraternal living is a unique experience — one that will always be with you, even after your college days.

Remember, be open minded, relax and be yourself. Rush can be fun!

Teri Troxclair
Panhellenic President



Kay Conrad

As Advisor to Panhellenic, it is my pleasure to work closely with our 15 national sororities at OSU. These organizations offer a special living group experience for over 1,000 college women each year.

Our sororities are friendly communities of sisters living in pleasant and comfortable homes near campus. Well-rounded programs in scholarship, community service, social and cultural activities are basic to sorority life. The opportunity for sorority membership is extended by invitation after a rush process of mutual choice.

Acceptance represents a unique and significant commitment on the part of those who choose to affiliate.

This handbook is prepared to inform you in general about our sororities and, specifically, about rush. If, after reading it, you or your parents have additional questions or concerns, please feel free to call (754-3661), write or come in to see me.

Kay Conrad

Assistant Dean of Students
and Advisor to Panhellenic

What Is Panhellenic?

The word Panhellenic is derived from the Greek roots: "Pan" meaning All and "Hellenic" meaning Greek. Panhellenic therefore means All Greek.

But why Greek? In ancient Athens, the concept of democracy was born. This was not simply a one-man one-vote concept, but the philosophy of total involvement of the individual in the affairs of state. Ancient Athens was the site of massive public assemblages to decide affairs of state, and annually rotating chairmanship of committees and holders of public offices. Every citizen was expected to participate in the over-life within which he existed. The Greek system of today is dedicated to the same ideals as that of ancient times.

The Oregon State Panhellenic Council, represented by two delegates from each of the National Panhellenic sororities on campus, works together to strengthen the bonds of friendship and cooperation among sororities and with the campus community as a whole. It strives to maintain high scholastic and social standards, and to promote loyalty and service to Oregon State University. The sorority rush program is only one of the many activities planned and coordinated by this Council. Other examples of its activities are leadership workshops, and involvement in community projects. Oregon State Panhellenic Council also supports two scholarships for Greek women and maintains an emergency loan fund.

This then is Panhellenic — a union of all sorority women working together, both locally and nationally, to strengthen and unify the fraternal world and to promote service and loyalty to their college community. Sorority life is the enjoyment of special experiences, as well as the opportunity to prepare for wide and wise service.

Sororities — What Are They?

A sorority is an experience in group living and self-government. Sororities have been governing themselves for many years. Each house is actually a small democratic community. As in all democracies, each member is expected to share the responsibility for total management of her living situation, including such areas as finances and policy decisions. The members must, from year to year, redefine the goals and expectations of their sororities as the girls continuously redefine their own personal needs and aspirations. Sisterhood is by no means synonymous with conformity. A sorority is a group formed by individuals, not individuals formed by the group.

Sororities at Oregon State are a combination of individualism and communal give and take, a part of the larger University environment. They are a part of that environment, not a refuge from it.

There is a challenge being presented to college students on campuses across the country today, and Oregon State is no exception. The challenge is asking students to be actively aware of what's happening around them and to strive for meaning in their education and their lives.

The sororities at Oregon State are not ignoring this challenge. It is not coincidental that they are situated in an academic community. Greeks at OSU are interested in promoting and supplementing your education, not supplanting it. They will challenge your ideas and beliefs, they will insist that you take nothing for granted, and they will provide an atmosphere conducive to the enlargement of your learning process. Although the activities of the house still play an important and fun part in sorority life, sororities are now finding themselves more and more involved with meeting the demands of their campus and community.

Pledgeship

After accepting an invitation to membership in a sorority, you become a pledge. At this time you begin to build the friendships which will grow as you become more acquainted with each of your new sisters. The pleasure of getting to know others with similar, or quite different ideas and interests comes hand in hand with the feeling of respect that grows among acquaintances in this living group. In addition to the daily, informal experiences that come through the sharing in a small living group, planned activities, such as pledge trips, skits, all-house retreats, or dinners and walk-outs, add to the fun of working together and learning more about one another. As your friendships and sense of involvement grow, you can see how the special traditions and ideals are upheld within a group of sorority members. Weekly pledge programs and meetings further acquaint you with the fraternity's standards and history.

Pledgeship is a time for fun, friendship, and learning. It introduces you to your responsibilities to the living group and its responsibilities to you. The sorority depends on each member, active and pledge, to share the responsibilities and duties necessary for the operation of this special form of cooperative living. Cooperation is expressed in functions, such as escorting the housemother, answering the phone, locking the doors at night, serving as committee members and officers, and helping to plan special programs. Through participation, each member becomes aware of the feeling of consideration toward others that characterizes involvement in a small living group.

Pledgeship is learning and sharing and friendships. It is a time of orientation to the type of cooperative living found in a sorority as well as a time for thoughtful consideration about your commitment to the experience of fraternal living.

Initiation

Upon fulfilling the obligations of pledgship as prescribed by each sorority, a pledge is initiated into full active membership. This is the time for introspection and decisions . . . Is this the house I want . . . Will I be happy here for the remainder of my college career . . . Can they offer me anything . . . Can I offer them anything . . . What changes if any would I like to see in the future . . . Is this house a challenge to my ideals and thoughts, so I can in turn share my differences in a unified atmosphere?

During initiation week, the pledge is expected to take part in several activities, designed to increase her awareness and appreciation of the commitment she is about to make. This week is a special time that sorority members remember throughout their lives. It's a time of learning as well as enjoying your house.

Pledgship is completed with initiation. The same learning processes and goals found in pledgship are even more inherent in active membership. Membership entails new responsibilities and opportunities for a girl. Membership is what sororities are all about!

Greek Alphabet

Alpha	Α	Nu	Ν
Beta	Β	Xi	Ξ
Gamma	Γ	Omicron	Ο
Delta	Δ	Pi	Π
Epsilon	Ε	Rho	Ρ
Zeta	Ζ	Sigma	Σ
Eta	Η	Tau	Τ
Theta	Θ	Upsilon	Υ
Iota	Ι	Phi	Φ
Kappa	Κ	Chi	Χ
Lambda	Λ	Psi	Ψ
Mu	Μ	Omega	Ω

Sororities at Oregon State University

Alpha Chi Omega Α Χ Ω	Delta Zeta Δ Ζ
Alpha Delta Pi Α Δ Π	Gamma Phi Beta Γ Φ Β
Alpha Gamma Delta . . . Α Γ Δ	Kappa Alpha Theta . . . Κ Α Θ
Alpha Omicron Pi Α Ο Π	Kappa Delta Κ Δ
Alpha Phi Α Φ	Kappa Kappa Gamma . Κ Κ Γ
Chi Omega Χ Ω	Pi Beta Phi Π Β Φ
Delta Delta Delta Δ Δ Δ	Sigma Kappa Σ Κ
Delta Gamma Δ Γ	

A X Ω



ALPHA CHI OMEGA

"Alpha Chi's"

310 N.W. 26th

Founded: DePauw University, October 15, 1885
Established on the OSU campus: March 19, 1915
Flower: Scarlet Carnation
Colors: Scarlet and Olive Green



A Δ Π



ALPHA DELTA PI

"A D Pi's"

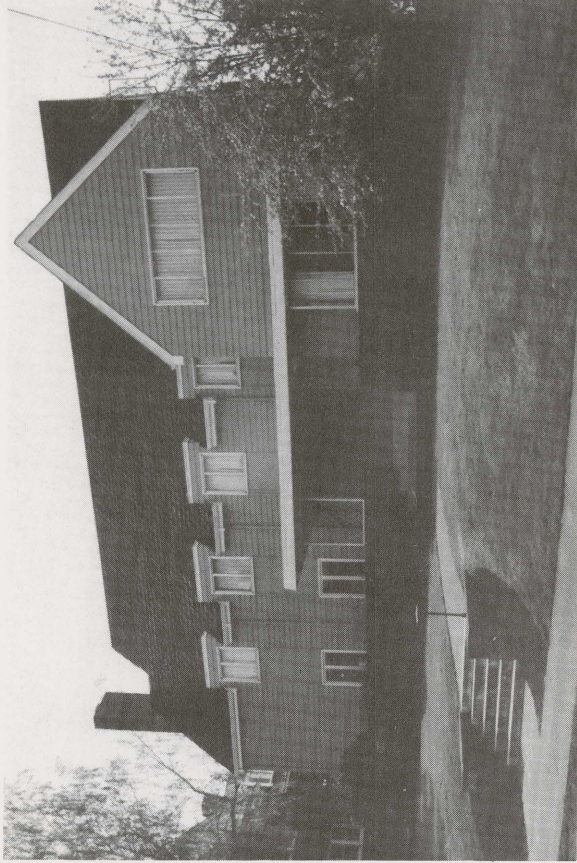
350 N.W. 23rd

Founded: Wesleyan Female College, May 15, 1851

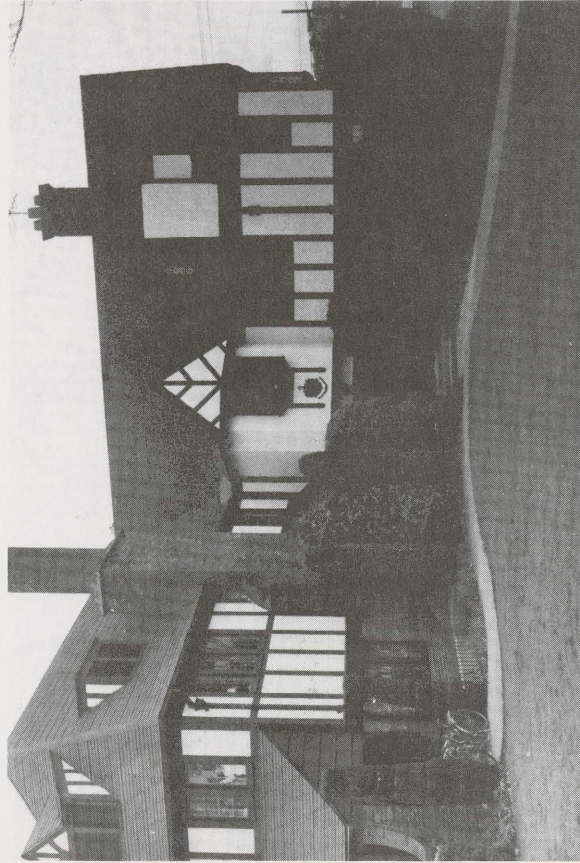
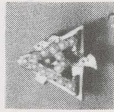
Established on the OSU campus: October 16, 1926

Flower: Purple Violet

Colors: White and Azure Blue



Α Γ Δ



ALPHA GAMMA DELTA

"Alpha Gam's"
360 N.W. 26th

Founded: Syracuse University, May 30, 1904
Established on the OSU campus: May 21, 1921
Flower: Red and Buff Roses
Colors: Red, Buff and Green

A O II



ALPHA OMICRON PI

"A O Pi's"

2435 N.W. Harrison

Founded: Barnard College, Columbia University, January 2, 1897
Established on the OSU campus: June 5, 1926

Flower: Jacqueminot Rose

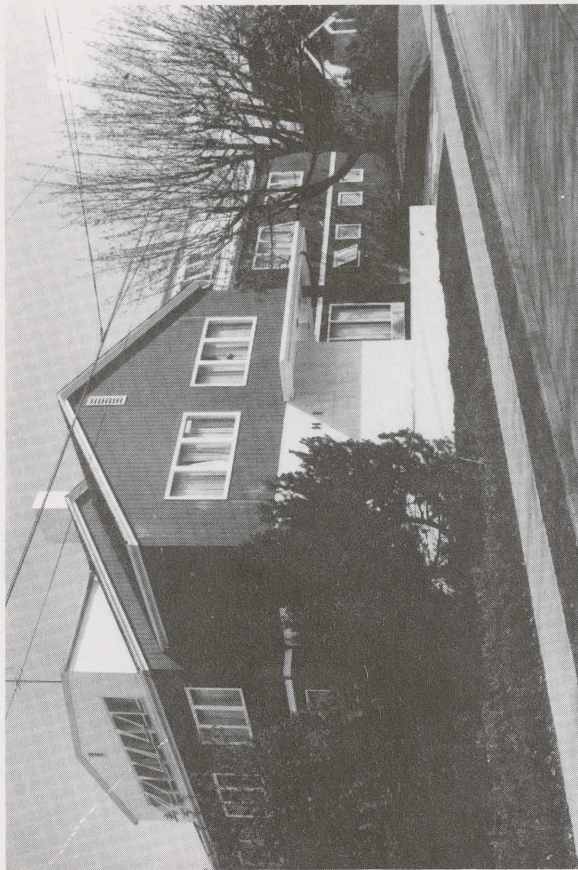
Colors: Cardinal



A
Φ



ALPHA PHI
"Alpha Phi's"
357 N.W. 25th



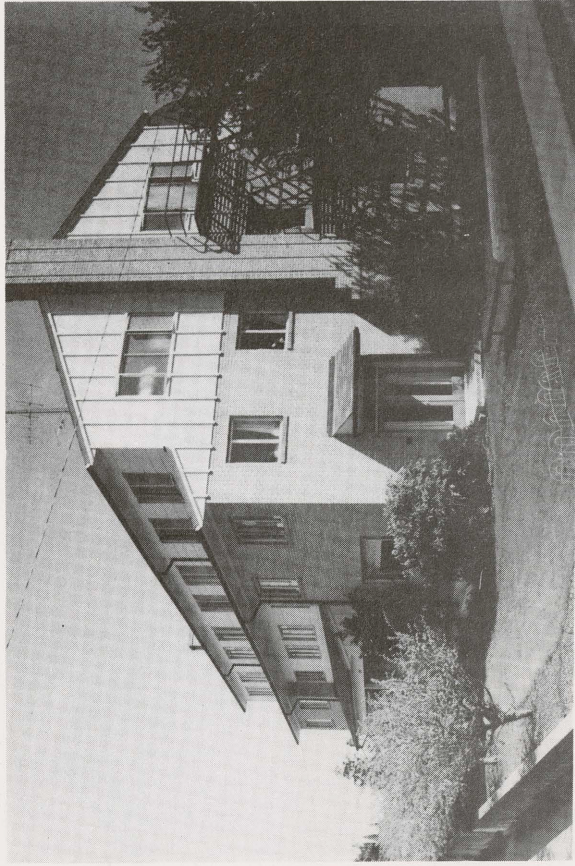
Founded: Syracuse University, October 10, 1872
Established on the OSU campus: 1947
Flower: Forget-Me-Not
Colors: Silver and Bordeaux

X Ω

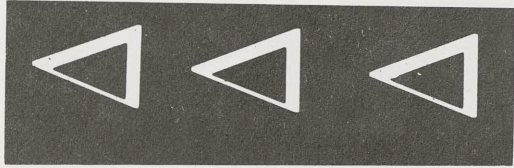
CHI OMEGA

"Chi O's"

2240 N.W. Van Buren



Founded: University of Arkansas, April 5, 1895
Established on the OSU campus: October 6, 1917
Flower: White Carnation
Colors: Cardinal and Straw



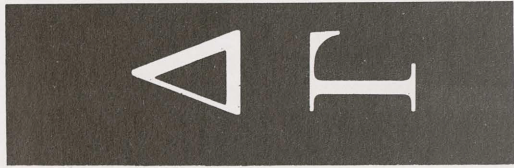
DELTA DELTA DELTA

"Tri Delt's"

340 N.W. 26th

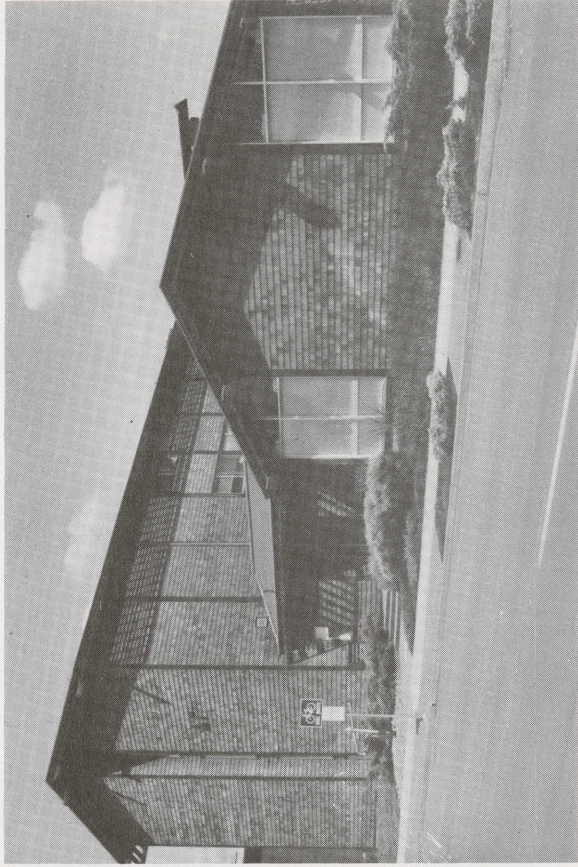


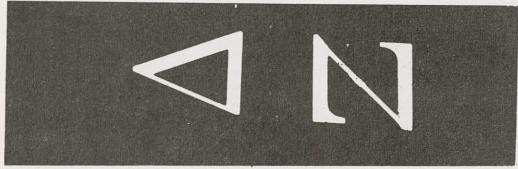
Founded: Boston University, Thanksgiving Eve, 1888
Established on the OSU campus: December 8, 1918
Flower: Pansy
Colors: Silver, Gold and Blue



DELTA GAMMA
"D G's"
715 N.W. 23rd

Founded: Lewis School, December, 1873
Established on the OSU campus: 1946
Flower: Cream Rose
Colors: Bronze, Pink and Blue





DELTA ZETA

"D Z's"

2311 N.W. Van Buren

Founded: Miami University, October 24, 1902
Established on the OSU campus: April 25, 1919
Flower: Killarney Rose
Colors: Old Rose and Nile Green



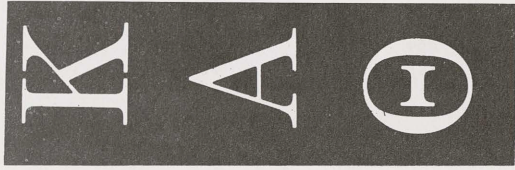
Γ Φ Β



GAMMA PHI BETA

"Gamma Phi's"
645 N.W. 23rd

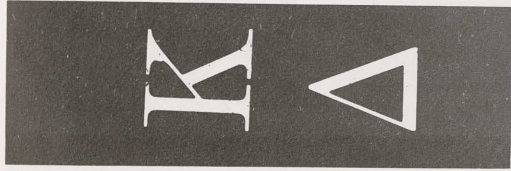
Founded: Syracuse University, November 11, 1874
Established on the OSU campus: April 26, 1919
Flower: Pink Carnation
Colors: Brown and Mode



KAPPA ALPHA THETA
"Theta's"
465 N.W. 23rd

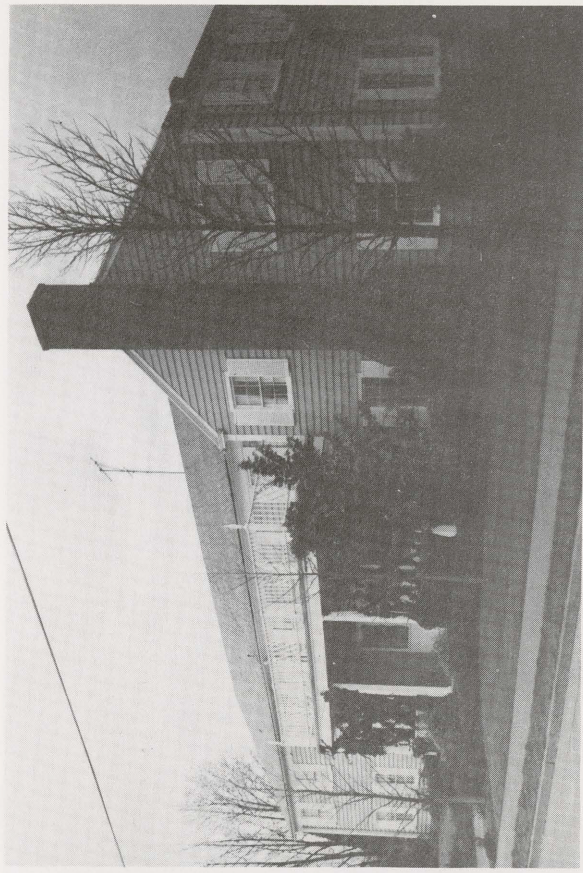
Founded: DePauw University, January 27, 1870
Established on the OSU campus: November 10, 1917
Flower: Pansy
Colors: Black and Gold





KAPPA DELTA
"K D's"
305 N.W. 25th

Founded: Longwood College, October 23, 1897
Established on the OSU campus: October 16, 1926
Flower: White Rose
Colors: Olive Green and Pearl White



**K
K
I**

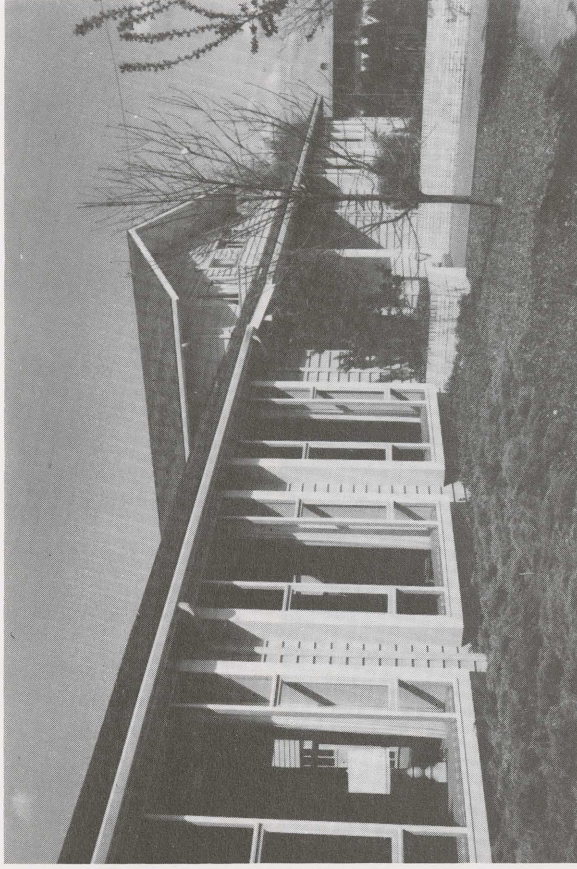


KAPPA KAPPA GAMMA
"Kappa's"
1335 N.W. Van Buren

Founded: Monmouth College, October 13, 1870
Established on the OSU campus: June 7, 1924
Flower: Fleur-de-lis
Colors: Sky and Sea Blue



Π
Β
Φ



PI BETA PHI

"Pi Phi's"

2685 N.W. Taylor

Founded: Monmouth College, April 28, 1867
Established on the OSU campus: May, 1917

Flower: Wine Carnation

Colors: Wine and Silver Blue

Σ **K**



SIGMA KAPPA

"Sigma Kappa's"
231 N.W. 26th

Founded: Colby College, November 9, 1874
Established on the OSU campus: May 31, 1918
Flower: Violet
Colors: Lavender and Maroon



Finances

Sorority treasurers receive expert financial supervision from professional accountants or experienced alumnae who are the financial advisors to the chapters. Detailed financial statements are sent to the parents of new members at the time of pledging, and advisors welcome consultation with parents at any time.

Financial details for individual sororities will be available to the rushee during rush periods.

Fees Paid Once

1. Pledge Fee \$15 - \$25
2. Initiation Fee \$58 - \$115

Fees Paid Irregularly per year

3. Building Fund \$45 - \$156

Expenses Paid Monthly

4. Dues and Miscellaneous \$11 - \$20
5. Room and Board — Sorority \$116 - \$144
6. Extras \$5 - \$15

Building Fund fees are paid in various ways, according to the particular sorority. Six houses require the total Building Fund the first year; others pay monthly amounts two, three or all four years.

Dues and miscellaneous cover such things as meals (for pledges and members living out), social fees, gifts, and special assessments determined by the sorority.

Extras include expenses such as telephone calls, house dance pictures, sorority jewelry, insignia sportswear, initiation gifts, and so on. These expenses are entirely individual. Some girls spend very little and some spend a lot.

Examples of affiliation costs: (These figures are average monthly costs with ranges on the greater and lesser sides.)

Pledge living out

Pledge Fee*	\$ 18.00
Initiation Fee*	79.00
Building Fund	10.00
Dues & Miscellaneous	15.00
Extras	10.00
Room & Board (Residence Hall 18-meal plan)	<u>120.00</u>
	\$252.00

Pledge living in

Pledge Fee*	\$ 18.00
Initiation Fee*	79.00
Building Fund	10.00
Dues & Miscellaneous	9.00
Extras	10.00
Room & Board (Sorority)	<u>126.00</u>
	\$252.00

Member living in

Building Fund	\$ 10.00
Extras	10.00
Room & Board (Sorority)	<u>126.00</u>
	\$146.00

*Paid Once

The Quota-Total System

Each sorority is limited in its total membership and, therefore, in its total number of pledges per year by what is called a quota-total system.

Each year the Oregon State University Panhellenic establishes a new pledge quota for sorority membership. The number of pledges allowed each chapter is determined by the total number of girls interested in sorority membership.

This quota-total system should not influence in any way your choice of a sorority. The reasons for following such a

system have been given by the National Panhellenic Conference. The Oregon State University Panhellenic wants you to know and understand these reasons:

- To give each rushee maximum opportunity to pledge.
- To provide fraternity experience to as many as possible.
- To maintain strength in the fraternity system.

RUSHING RULES

Eligibility to Rush

A student may be rushed who:

- a. has been officially admitted to OSU* in good standing, or
- b. has completed 12 or more quarter hours of previous college work with a 2.00 accumulative college GPA and is not on academic probation for the previous term. Individual sororities may set higher requirements for pledging.

Formal Rush Procedure

1. During a formal rush period, no student may be rushed who has not officially registered. All students who wish to rush in September must have registered and paid the Panhellenic fee before September 6, preceding the fall formal rush period. Spring formal rush registration details will be publicized during winter term.
2. There shall be meetings of all rushees to explain rush rules and procedure prior to formal rush periods.
3. Panhellenic, with the approval of its advisor, will set the quota-total prior to each formal rush period.
4. Rushees are required to accept the maximum number of invitations possible on the 9-party and 6-party days of rush.

5. Rushees must attend the maximum number of accepted preference parties unless ill or excused by the Panhellenic Office. Non-attendance may drop them from rush.
6. Names of pledges at the end of the formal rush period shall be released for publication by the Panhellenic Office only.

Informal Rush Procedures

1. Sororities whose full membership, members and pledges, does not exceed their quota-total, or sororities who have not filled their pledge quota may hold informal rush and pledging during the year.
2. To be eligible to be pledged in an informal rush period a rushee must fulfill the scholastic requirements for formal rush.
3. Payment of the fall formal rush fee entitles a student to rush privileges for the academic year (September to June). A student who did not participate in formal rush must pay her Panhellenic fee (\$10.00) at the time her pledge card is signed in the Panhellenic Office.
4. A student is not officially pledged until the Panhellenic Office has on file her signed pledge card and she has paid her Panhellenic fee.
5. The pledge card and rush fee must be turned in to the Panhellenic Office within 48 hours of pledging.
6. Lists of students pledged during informal rush shall be released for publication by the Panhellenic Office following the informal rush period each term.

Details on Registering for Rush

1. The official registration form found in the back of this handbook is used for all rush periods. For fall formal rush,

mail the completed form with a check or money order for \$10.00 payable to Oregon State Panhellenic Council, to Panhellenic Council, A218 Administrative Services Building, Oregon State University, Corvallis, Oregon 97331, by September 6, 1974. Late registration will be considered, but not guaranteed. For any informal rush period and for spring formal rush, return the form to the Panhellenic Office by the date announced.

2. Panhellenic policy states that sorority houses with space to accommodate freshmen pledges may do so immediately upon pledging at the end of fall formal rush. However, freshman women are advised that such space is very limited, and to insure housing of the type most desired, it is best to have a residence hall contract. For housing information, contact the Department of Student Housing. Your permanent hall assignment will also be your rush week assignment. Contracts may be terminated at term end upon submission of an application to move into a sorority, although the \$50.00 deposit is not refunded. All single freshmen matriculating to OSU within one year of high school graduation must live in University residence halls, fraternities, sororities, or co-ops, unless living with parents or guardians. Since the hall contractual period begins Wednesday, September 25, those arriving earlier must plan to pay additional costs per day for lodging and meals.
3. All other rushees are strongly advised to rush without a housing contract if desiring to move directly into the sorority house fall term. If you have not signed a housing contract and you pledge a sorority, you may move directly into the house. If you choose not to pledge, university housing will be available for which you may make contractual arrangements. Room and board fees for accommodations during rush week are \$40.00 in addition to the \$10.00 registration fee. All those requesting temporary fall rush week accommodations should report to MU 213 for room assignments upon arrival at OSU.

4. If, for some unavoidable reason, such as illness, you are unable to come for rush, the room and board fee of \$40.00 will be refunded up to September 13, 1974. The Panhellenic rush fee (\$10.00) is refundable until September 10, 1974.

Summer Orientation and Advising Programs

All freshmen participating in fall formal rush are urged to take advantage of the Summer Orientation and Advising Programs on campus in July. Sorority houses will be open for tours during each session. If you have any questions about OSU's summer program, please write to the Office of New Student Programs.

Fall Formal Rush Regulations

1. Silent period is the time during which sorority members may wear pins and talk in passing on campus to rushees, but no coke dates or meetings between rushees and affiliated women are allowed. Silent period begins rush week upon arrival in Corvallis and remains in effect on and off campus until ribbon pledging at the end of formal rush. Sorority members may not go to residence halls and may not telephone rushees. (If absolutely necessary, a sister of a girl in a sorority may be an exception.) If communication with a rushee is necessary, contact the Panhellenic Office.
2. No affiliated women except Panhellenic officers and delegates, without pins and other fraternal identification, may go into an independent living group during silent period.
3. Panhellenic delegates and officers cannot wear or display any sorority insignia or emblems until after fall term ribbon pledging.
4. Absolutely no form of rushing, other than specified parties, is to take place during formal rush periods.

5. During formal rush, rushees are not to attend any functions with affiliated women other than sorority rush parties.
6. Themes, decorations, or favors (napkins, place cards, name tags, etc.) used at formal rush functions cannot be taken from the chapter house by rushees until formal rush has ended.
7. Sorority members and pledges only may present entertainment at rush parties. (Houseboys may serve refreshments only.) Alumnae and actives from other chapters are considered sorority members.
8. Rushees are expected to attend all rush parties signed up for. In case of illness or emergency, the Panhellenic Office, not individual sororities, should be contacted.

Special Tips for Rushees

1. Read this handbook carefully. Refer to it for answers to questions you may have. Be sure to bring this handbook with you to rush.
2. Read rushing rules and know them well.
3. Dress to be comfortable.
4. Be on time!
5. Let your personality shine. Your natural self is your best self.
6. Keep your opinions to yourself. Rush is a personal concern, and pledging is your decision.
7. Your delegate or the Panhellenic Officers in MU 213 expect to answer your questions — feel free to ask them.
8. Above all, be open-minded, relax, be positive, and have fun!

Greek Glossary

Active - A girl who has completed her period of pledgship and who has been formally initiated into her sorority.

Affiliate - Any student who is a pledge or a member of a Greek organization.

Alumna - An initiated sorority woman who has completed her work at a university or college or has withdrawn from the institution.

Bid - The official invitation to become a pledge of a sorority.

Blue Card - A way a rushee can indicate her interest in a house during formal rush.

Chapter - The local group which represents a segment of the larger national organization of a sorority or fraternity. Chapter names are Greek letters, beginning with Alpha, designated in chronological order as to when the local chapter was founded, for example, "Chi chapter of . . . sorority."

Exchanges - The name applied to informal functions (usually firesides, keggers, exchange dinners, roller skating parties, picnics) held between fraternities and sororities.

Formal Pledging - The time when a girl is formally pledged to her sorority and wears the official pin of her sorority.

Formal Rush - The period of rush which is scheduled through Panhellenic and where every rushee visits every sorority at least once.

Fraternity - The name applied to all Greek organizations including sororities. Informally, it is applied to men's groups.

Greek - The name applied to all fraternity and sorority members. This name is used because their organizations identify themselves by Greek letters.

Initiation - The solemn ceremony through which the pledge becomes an active and is initiated into full membership of her sorority.

Invitation Card - An invitation from a sorority to a rush party.

Junior Panhellenic - In order to educate pledges about leadership and service, we have a Junior Panhellenic Council. A member of each pledge class meets with the Junior Panhellenic officers and the Junior Panhellenic Advisor to form this Council. The Council helps serve as a campus and community service association and assists Panhellenic Council with some of its projects.

Legacy - A daughter or sister of an alumna or a sorority woman. During rush, legacies receive the same consideration as any rushee.

M.U. - The center of all campus activities is called the Memorial Union, or the M.U. Panhellenic Office is M.U. 213.

Panhellenic Council - The coordinating body for all the member sororities on the OSU campus.

Panhellenic Delegate - A sorority member who is prepared by Panhellenic to help during rush. She will live in the residence hall and will be available through fall rush to help you with your questions and problems.

Pledge - A girl who has been formally pledged by a sorority but has not yet been initiated.

Pledge Card - The card signed finalizing intention to accept an invitation to pledge a sorority.

Pledge Class - The group pledged to a sorority at the same time.

Rushee - A girl going through rush for the purpose of pledging a sorority.

Weather - Unpredictable. It would be wise to include rain gear, an umbrella, and both warm and cool clothes in your suitcase.

OSU Panhellenic Fall Rush Schedule 1974-75

Tuesday, September 24

7 Open House Parties — 30 minutes

Suggested dress: Campus Dress

- 4:30 - 5:10 p.m. Meet with Delegates in MU Rooms (check MU 213 for assignment)
- 5:30 - 6:00 1st party
6:10 - 6:40 2nd party
6:50 - 7:20 3rd party
7:30 - 8:00 4th party
8:10 - 8:40 5th party
8:50 - 9:20 6th party
9:30 - 10:00 7th party

Wednesday, September 25

8 Open House Parties Continued

- 4:30 - 5:00 p.m. Meet in MU Rooms
- 5:15 - 5:45 8th party
5:55 - 6:25 9th party
6:35 - 7:05 10th party
7:15 - 7:45 11th party
7:55 - 8:25 12th party
8:35 - 9:05 13th party
9:15 - 9:45 14th party
9:55 - 10:25 15th party
11:15 - Blue Carding - MU Rooms

Thursday, September 26

Registration 8:00 a.m. - 6:00 p.m.

8:00 p.m. Rushees accept invitations, MU Rooms

Friday, September 27

9 Party Day — 35 minutes

Suggested dress: Campus Dress

- 8:30 a.m. Meet in MU Rooms for party schedules
- 9:00 - 9:35 a.m. 1st party
9:45 - 10:20 2nd party
10:30 - 11:05 3rd party
11:15 - 11:50 4th party
12:00 - 1:00 p.m. Lunch break
1:10 - 1:45 5th party
1:55 - 2:30 6th party
2:40 - 3:15 7th party
3:25 - 4:00 8th party
4:10 - 4:45 9th party
4:55 MU Rooms for blue carding
11:15 - 12:00 MU Rooms for invitation accepting

Saturday, September 28

6 Party Day — 45 minutes

Suggested dress: Campus Dress

- 8:30 a.m. Meet in MU Rooms for party schedules
- 9:00 - 9:45 a.m. 1st party
9:55 - 10:40 2nd party
10:50 - 11:35 3rd party
11:45 - 12:30 4th party
12:35 - 1:20 p.m. Lunch break
1:30 - 2:15 5th party
2:25 - 3:10 6th party
3:20 - 4:05 MU Rooms for blue carding
11:15 - 12:00 MU Rooms for invitation accepting

Sunday, September 29

Preference Day — 50 minute parties

- 5:30 p.m. Meet in MU Rooms for party schedules
- 6:00 - 6:50 p.m. 1st party — dressy dress — progressive dinner
- 7:05 - 7:55 2nd party
8:10 - 9:00 3rd party
9:15 - 10:30 MU Rooms — rushees preference

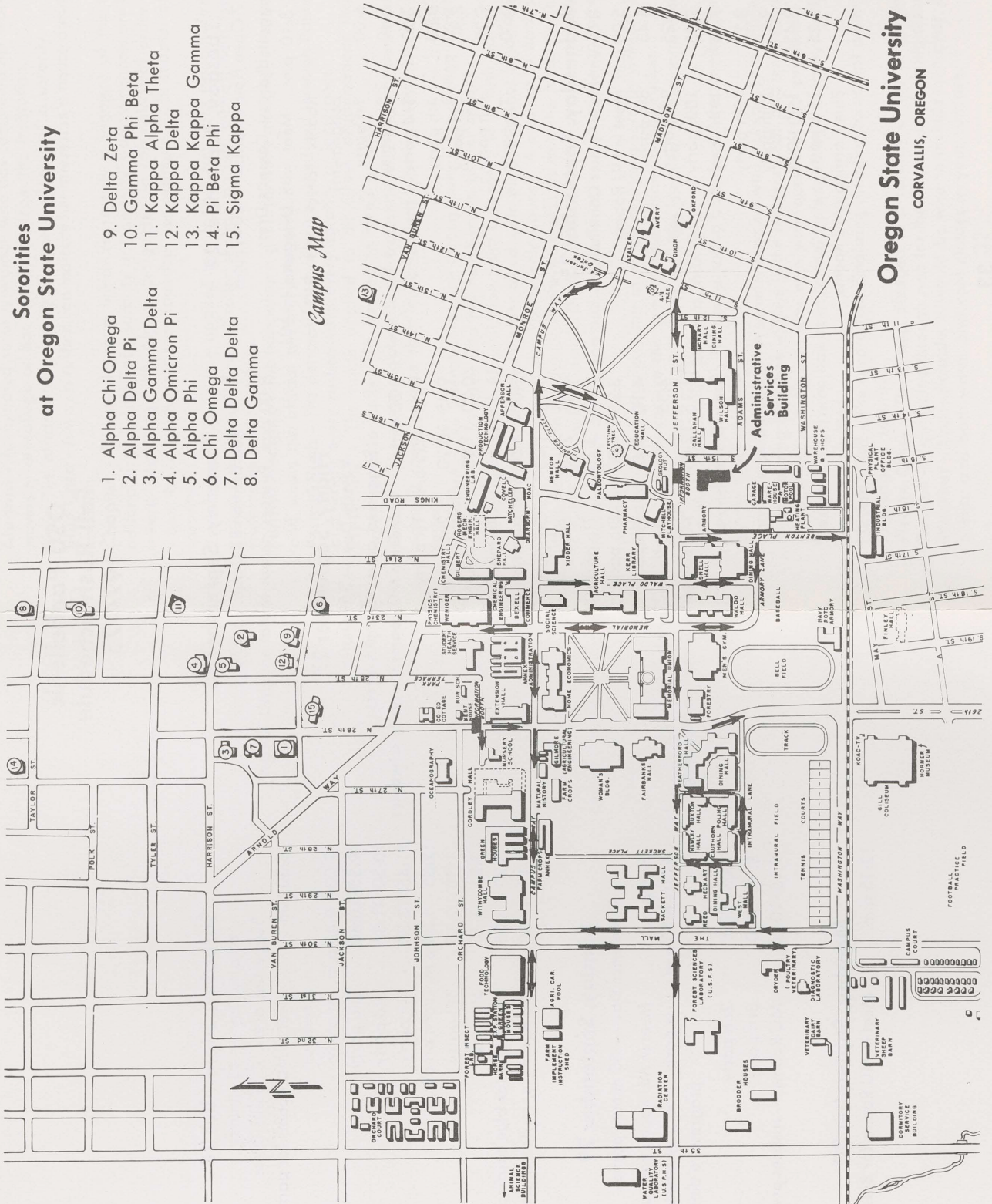
Monday, September 30

- 12:15 p.m. Meet in MU Rooms for Bids!

Sororities at Oregon State University

1. Alpha Chi Omega
2. Alpha Delta Pi
3. Alpha Gamma Delta
4. Alpha Omicron Pi
5. Alpha Phi
6. Chi Omega
7. Delta Delta Delta
8. Delta Gamma
9. Delta Zeta
10. Gamma Phi Beta
11. Kappa Alpha Theta
12. Kappa Delta
13. Kappa Kappa Gamma
14. Pi Beta Phi
15. Sigma Kappa

Campus Map



Oregon State University
CORVALLIS, OREGON

Registration Form Instructions

1. Fill out the registration card using the name by which you have registered at OSU. Please print in ink or type.
2. Fall formal rushees enclose registration form with a check or money order for \$10.00 rush fee, payable to OSU Panhellenic. Upperclassmen without contracts enclose \$50.00 (\$40.00 room and board fee, plus \$10.00 rush fee).
3. Mail by September 6, 1974,* to OSU Panhellenic Council, A218 Administrative Services Building, Oregon State University, Corvallis, Oregon 97331.

For Office Use Only

Name Date Rec'd GPA

.....

Home Address Receipt No. List No.

Last First Middle Age
 Street Telephone

City State Zip

Name of Parent or Guardian Telephone

Parent's or Guardian's address
 (only if different from yours)
 Last First Middle
 No. Street Telephone

City State Zip Telephone

Sorority affiliation of mother or sisters, if any

High School Attended City State

Grade Point: High School List major High School Activities on reverse side. Year in College

Previous colleges attended City

List Major College activities on the reverse side.

Grade Point: Previous College Telephone

OSU address Telephone

Enclosed () \$10.00 Registration Fee () Money Order **I authorize Panhellenic to make my grades and information on this card available to all the sororities.**

() \$50.00 Registration and Room and Board Fee () Check

*Late registrations will be considered, but not guaranteed.

