

**step into
a new life**

Panhellenic rush fall '78

**sororities at
oregon state**

Greek Alphabet

<p>Α Alpha</p> <p>Β Beta</p> <p>Γ Gamma</p> <p>Δ Delta</p> <p>Ε Epsilon</p> <p>Ζ Zeta</p> <p>Η Eta</p> <p>Θ Theta</p> <p>Ι Iota</p> <p>Κ Kappa</p> <p>Λ Lambda</p> <p>Μ Mu</p>	<p>Ν Nu</p> <p>Ξ Xi</p> <p>Ο Omicron</p> <p>Π Pi</p> <p>Ρ Rho</p> <p>Σ Sigma</p> <p>Τ Tau</p> <p>Υ Upsilon</p> <p>Φ Phi</p> <p>Χ Chi</p> <p>Ψ Psi</p> <p>Ω Omega</p>
--	--

Sororities at Oregon State University

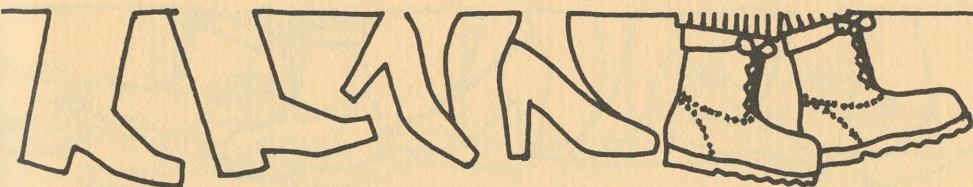
Alpha Chi Omega Α Χ Ω	Delta Gamma Δ Γ
Alpha Delta Pi Α Δ Π	Gamma Phi Beta Γ Φ Β
Alpha Gamma Delta. . . . Α Γ Δ	Kappa Alpha Theta Κ Α Θ
Alpha Omicron Pi Α Ο Π	Kappa Delta Κ Δ
Alpha Phi. Α Φ	Kappa Kappa Gamma. . . . Κ Κ Γ
Alpha Xi Delta Α Ξ Δ	Pi Beta Phi Π Β Φ
Chi Omega Χ Ω	Sigma Kappa Σ Κ
Delta Delta Delta. Δ Δ Δ	

step into a new life sororities at oregon state fall 1978

table of contents

1	Introduction
7	Sororities
22	Specifics
28	Helpful Hints
32	Rush Schedule

Editor: Mary Suiter
Cover & Graphics: Janice McDonald
Photography: Gary Akiyama



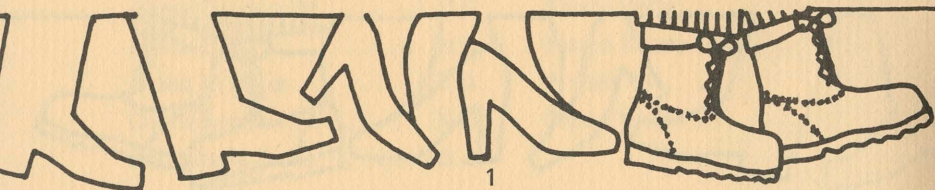


Panhellenic Executive Board—left to right: Carol McDonald, Secretary; Nancy Hotchkiss, Rush and Delegate Coordinator; Cindy Anderson, Assistant Rush and Delegate Coordinator; Karen Froehlich, Vice President; Marianne McMillan, President; and Carla Pinkstaff, Treasurer.

THE PANHELLENIC CREED

We, the undergraduate members of women's fraternities, stand for good scholarship, for guarding of good health, for maintenance of fine standards, and for serving, to the best of our ability, our college community. Cooperation for furthering fraternity life, in harmony with its best possibilities, is the ideal that shall guide our fraternity activities.

We, the fraternity women of America, stand for service through the development of character inspired by the close contact and deep friendship of individual fraternity and Panhellenic life. The opportunity for wide and wise human service, through mutual respect and helpfulness, is the tenent by which we strive to live.



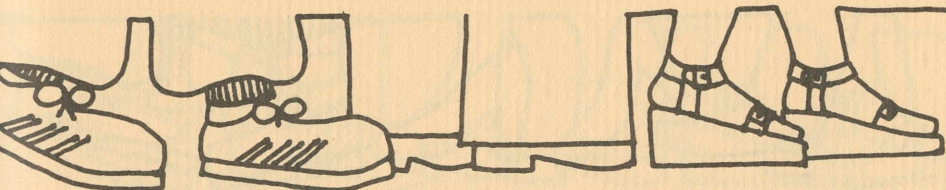


Marianne McMillan, Panhellenic President and Kay Conrad, Assistant Dean of Students.

Greetings from Oregon State University and Panhellenic Council. We are pleased to know that you are interested in our sorority system. This handbook is designed specifically to provide basic information about sororities and the Greek system at OSU, and details concerning membership. Our process of introducing you to the women in sororities is called "rush". Most interested women participate in our formal rush week in September, and others choose to rush during the year on a more informal basis. You will find both rushes described in this handbook.

Formal rush provides you your only opportunity to visit each sorority, become acquainted with current members, learn about what sorority life has to offer and to decide if you feel you wish to be a part of such a sisterhood. Being a sorority member is a lifetime experience that begins with your university years. You will find a home away from home, a circle of close friends, an opportunity for your leadership potential to develop, scholastic support and individual growth.

We hope that after reading this handbook you will be interested in exploring sorority membership and will decide to participate in rush. Should you have any questions please write, call or come by to see us.



WHAT IS PANHELLENIC?

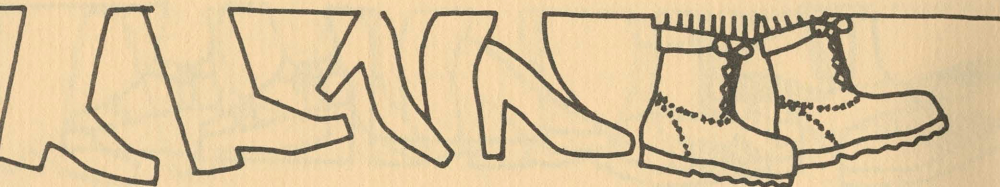
The word "Panhellenic" is derived from the Greek roots: "Pan" meaning All and "Hellenic" meaning Greek. What Panhellenic really means, then, is an organization of All-Greek women.

But why Greek? Because in ancient Athens, the concept of democracy was born. Every citizen had the opportunity to become totally involved with government decisions, and was expected to contribute efforts toward maintaining that system.

The Panhellenic Council at Oregon State is composed of the executive officers and two delegates from each of the 14 National Panhellenic Conference sororities on campus. Panhellenic serves as an organizing body for the sororities, and promotes friendship and cooperation among them.

The sorority rush program is only one of the many activities coordinated by this council. Others include leadership workshops, involvement in community projects, scholarships, a Greek sponsored Valentines Dance, as well as an event in the spring called Greek Week.

As soon as you become a pledge of a sorority, you also become a member of Panhellenic. Until you pledge, and while you are a rushee, Panhellenic will give you useful information on all sororities. Panhellenic is not partial to any particular sorority house—our primary interest is YOU. Feel free to ask your Panhellenic delegate any questions that may arise during rush.



WHAT IS A SORORITY?

There is no such thing as a typical sorority woman. A sorority is a composite of every type of young woman—each offering something different, uniquely her own, but equally important.

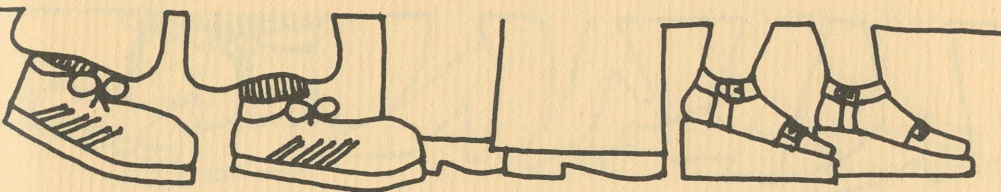
On a campus the size of OSU, sometimes you can feel kind of lost. A sorority provides the ideal situation for meeting friends. It's nice to be more than just another face in the crowd. In a sorority you have a place to belong . . . a home.

The sorority lifestyle gives you the opportunity to grow and expand your horizons. Every sorority encourages academic achievement, involvement in campus and community affairs, and close friendships with others who share a common bond of sisterhood.

In a sorority, you will have an outlet for your own ideas, thoughts and personality. All of your talents will be put to use, and you may even discover some new ones.

Whether it's getting together to play football in the fall, painting posters for Homecoming, raising money for the Heart Fund, or studying for a chemistry test . . . a sorority is PEOPLE . . . people living and giving.

So step into sororities at OSU . . . and don't be afraid to get your feet wet!!





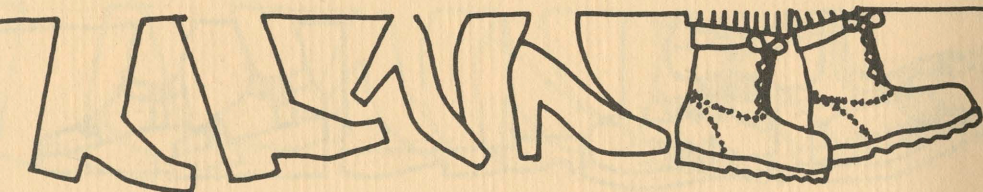
YOU AS A PLEDGE

Think carefully about pledging a sorority. Membership is truly a rewarding experience for those women who accept the challenge and are willing to devote the time and effort necessary to receive the benefits of this lifestyle.

When you accept an invitation to pledge a sorority, you will be taking the first step in becoming a member. Pledging is an orientation period. While you are a pledge, you will be learning about and experiencing your chapter. You will learn about its history and traditions, its financial obligations and philanthropies, its ideals and goals.

The pledge program for your sorority will be conducted by a pledge educator and her assistant, who are initiated members. Your pledge class will elect its own officers, and special activities and plans will be discussed at each weekly meeting.

In addition to the daily informal experiences that come through the sharing in a small living group, planned activities such as pledge trips, walk-outs, skits, all-house retreats and Monday night dinners all add to the fun of learning and working together.



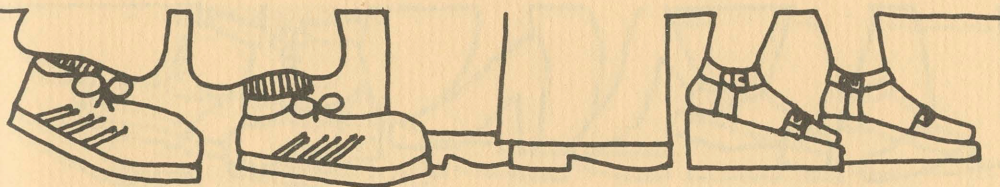
Pledgeship is a time for fun, friendship and learning. It introduces you to your responsibilities to the living group, and its responsibilities to you. The sorority depends on each sister, member and pledge, to share the responsibilities and duties necessary for operation of this special form of cooperative living. These are everyday responsibilities, for a sorority is a full time experience.

WHERE DO YOU LIVE?

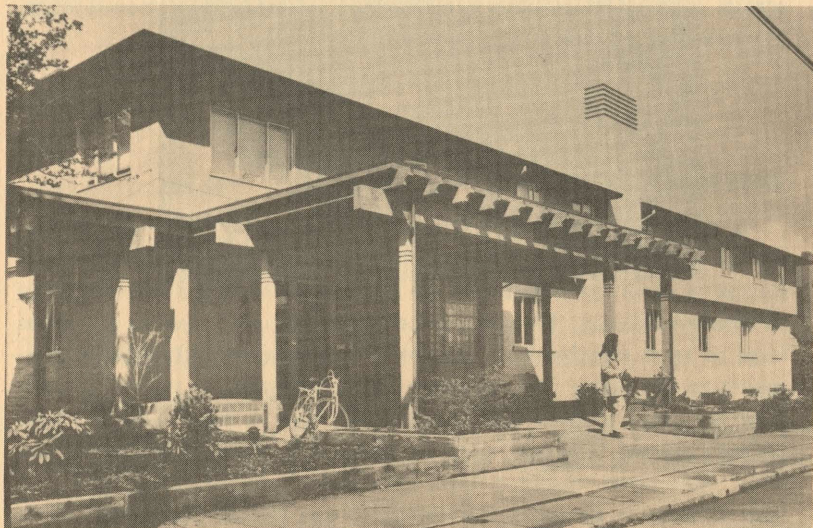
If you are a freshman enrolling at OSU within one year of high school graduation, you are required to live in University residence halls, co-ops or sororities unless you are granted an exception by the Office of Student Services. However, since sorority house capacities are not as large as total memberships, you as a freshman, should make arrangements to live either in a residence hall or co-operative your first year. You will need to plan your budget with that in mind—you will have sorority related "live-out" costs in addition to the expenses where you live. Sometimes freshmen move into their sororities during their first year if space is available, but generally you should not expect to do this.

If you are not a freshman or otherwise qualify to live wherever you choose, we recommend that you make arrangements for accommodation during rush week and fall term so that you will be assured of housing. The sororities will, of course, want you to move in as quickly as possible and several will have space available fall term. You need to be prepared for any contractual obligations you have elsewhere, however, if you wish to move into the chapter house upon pledging.

Temporary accommodations are very limited in Corvallis, and OSU residence halls do not offer short term accommodations. Consider your options carefully and make arrangements early. Panhellenic will be happy to answer your questions, but we cannot make any housing reservations of any sort for any rushee.



ΑΧΩ

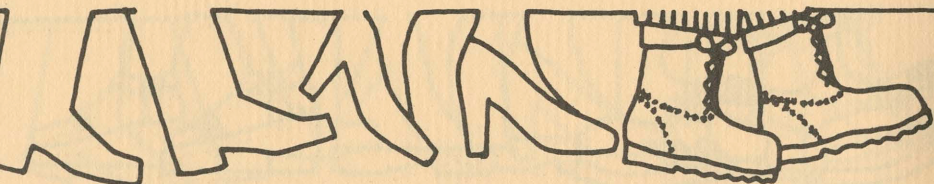


"Different tastes never stopped people from being friends. But when you are friends, you always speak the same language." – Eleanor Hastings

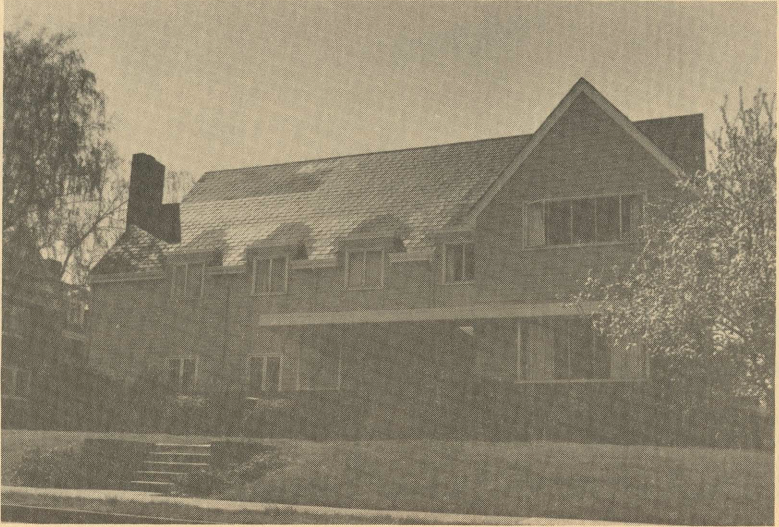
ALPHA CHI OMEGA

"Alpha Chi's"
310 N.W. 26th
754-2117

Founded: DePauw University, October 15, 1885
Established on the OSU campus: March 19, 1915
Flower: Scarlet Carnation
Colors: Scarlet and Olive Green
Chapter Name: Chi
Comments:



ΑΔΠ



"Smiling faces, unique individuals and a common bond of Love, Laughter, and Sisterhood are all a part of ADPi."

ALPHA DELTA PI

"A D Pi's"

350 N.W. 23rd

753-4491

Founded: Wesleyan Female College, May 15, 1851

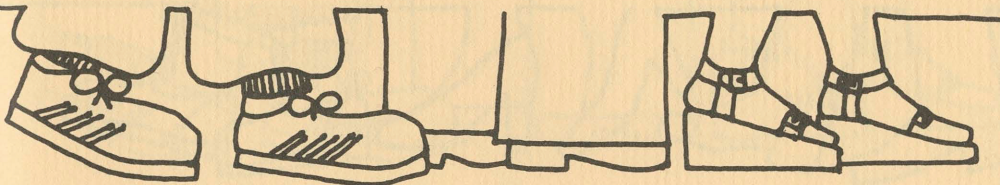
Established on the OSU campus: October 16, 1926

Flower: Purple Violet

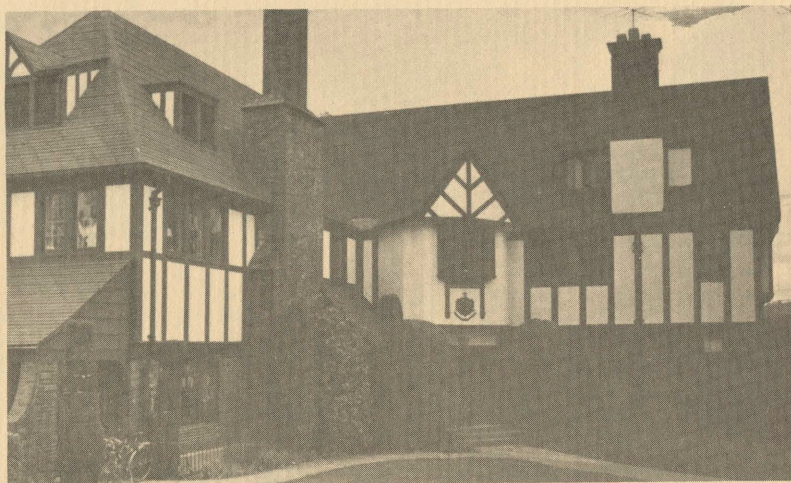
Colors: White and Azure Blue

Chapter Name: Alpha Omega

Comments:



ATA



"First impressions of Alpha Gam – English Tudor outside and buff roses on the carpet, rooms in all colors, shapes, and sizes. Looking a little closer—spark of enthusiasm, and understanding and friendship, a wide variety of people that know a common bond—Alpha Gam."

ALPHA GAMMA DELTA

"Alpha Gam's"

360 N.W. 26th

753-6600

Founded: Syracuse University, May 30, 1904

Established on the OSU campus: May 21, 1921

Flower: Red and Buff Roses

Colors: Red, Buff and Green

Chapter Name: Phi

Comments:



AOPi



"AOPi is a place where I can share the simple livelihood of growth and character."

ALPHA OMICRON PI

"A O Pi's"

2435 N.W. Harrison

754-2251

Founded: Barnard College, Columbia University, January 2, 1897

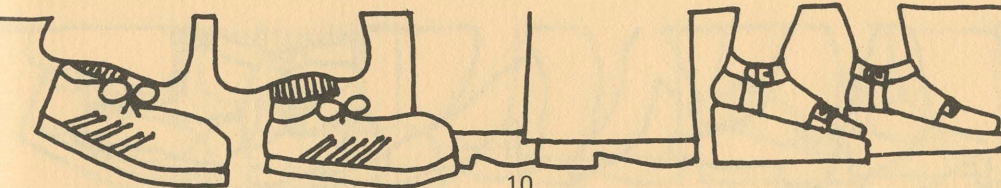
Established on the OSU campus: June 5, 1926

Flower: Jacqueminot Rose

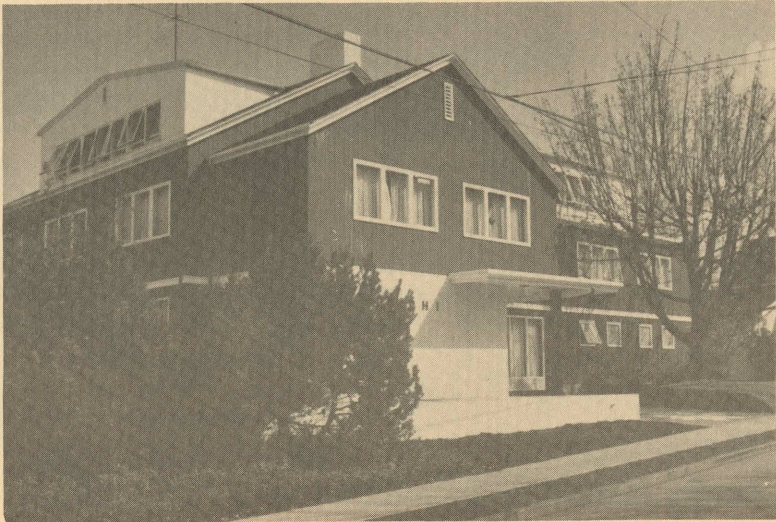
Color: Cardinal

Chapter Name: Alpha Rho

Comments:



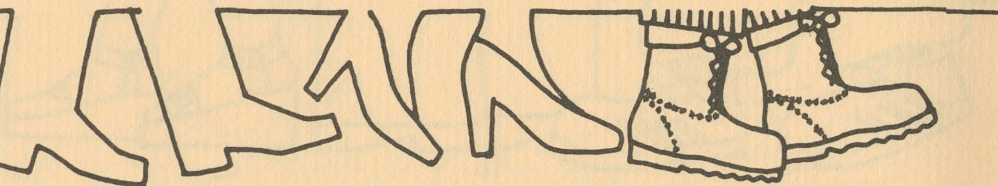
ΑΦ



"If someone should ask me to give a reason why I love my friend, there could be only one answer: because she was she, and I was I."

ALPHA PHI
"Alpha Phi's"
357 N.W. 25th
754-3587

Founded: Syracuse University, October 10, 1872
Established on the OSU campus: 1947
Flower: Forget-Me-Not
Colors: Silver and Bordeaux
Chapter Name: Beta Upsilon
Comments:



ΧΩ



"It is chance that makes us sisters but hearts that make us friends.

CHI OMEGA

"Chi O's"

2240 N.W. Van Buren

753-6649

Founded: University of Arkansas, April 5, 1895

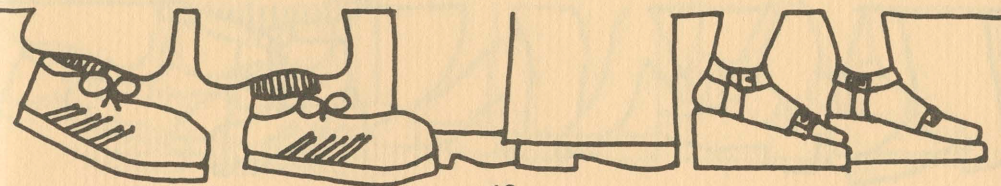
Established on the OSU campus: October 6, 1917

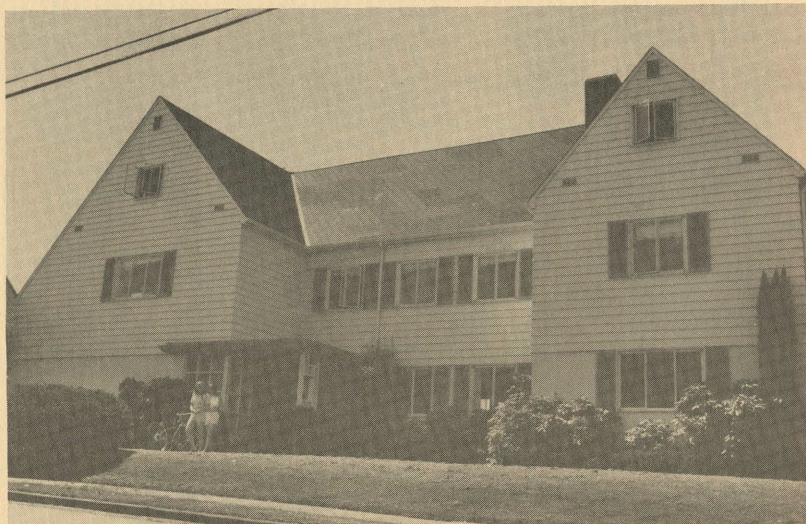
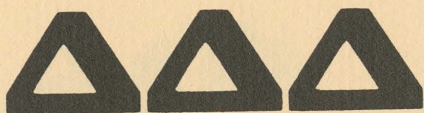
Flower: White Carnation

Colors: Cardinal and Straw

Chapter Name: Eta Alpha

Comments:





"Come take my hand and see —What Tri-Delt means to me—Friendship, love, and unity—Within our Delta's three.

DELTA DELTA DELTA

"Tri Delt's"

340 N.W. 26th

754-3554

Founded: Boston University, Thanksgiving Eve, 1888

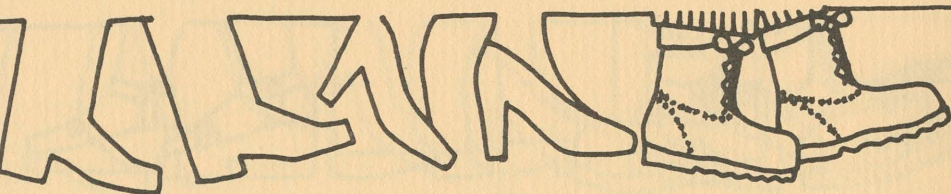
Established on the OSU campus: December 8, 1918

Flower: Pansy

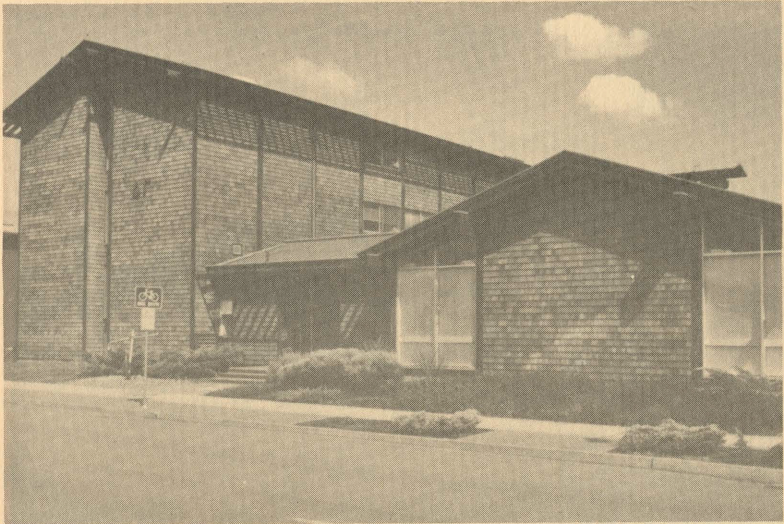
Colors: Silver, Gold and Blue

Chapter Name: Theta Mu

Comments:



ΔΓ



"Watch the girls who wear the anchor—They're the ones who will be true—And then you'll know that Delta Gamma—Is the only one for you."

DELTA GAMMA

"D G's"

715 N.W. 23rd

754-3305

Founded: Lewis School, December, 1873

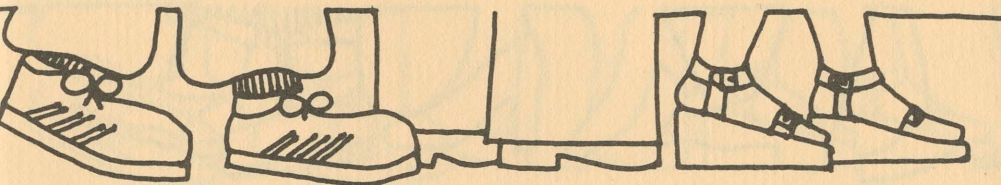
Established on the OSU campus: 1946

Flower: Cream Rose

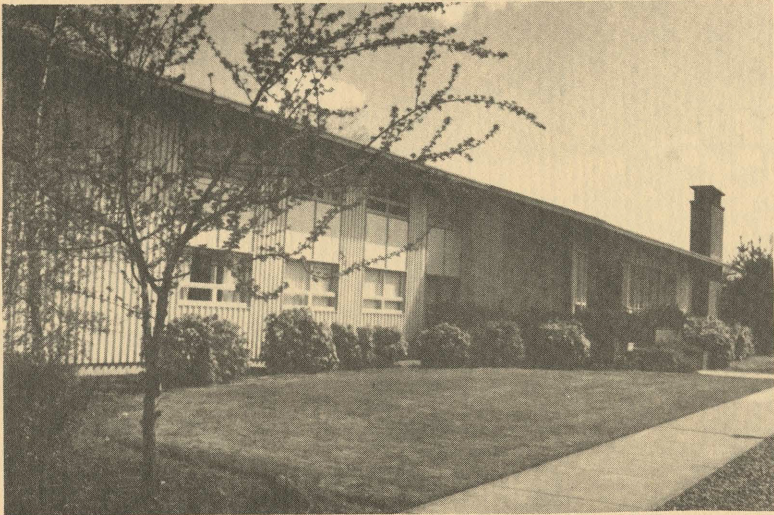
Colors: Bronze, Pink and Blue

Chapter Name: Beta Upsilon

Comments:



ΓΦΒ



"I have found, that to be with those I like is enough."

GAMMA PHI BETA

"Gamma Phi's"

645 N.W. 23rd

752-7194

Founded: Syracuse University, November 11, 1874

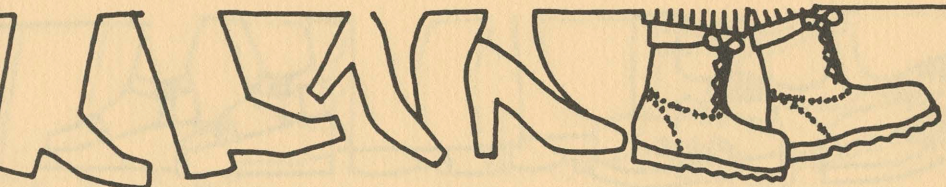
Established on the OSU campus: April 26, 1918

Flower: Pink Carnation

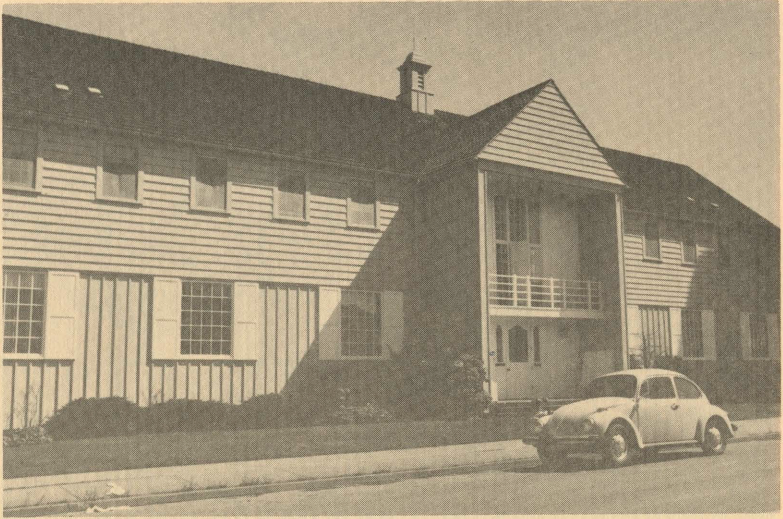
Colors: Brown and Mode

Chapter Name: Chi

Comments:



KAO



"A Theta is one with whom I dare to be myself."

KAPPA ALPHA THETA

"Theta's"

465 N.W. 23rd

754-4861

Founded: DePauw University, January 27, 1870

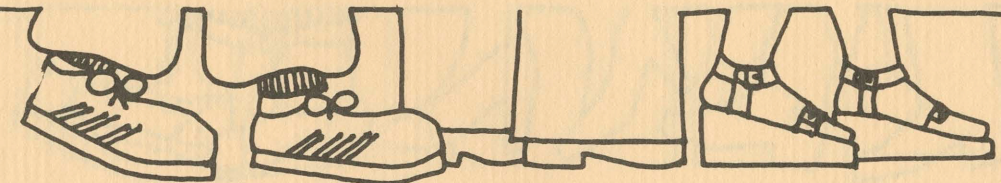
Established on the OSU campus: November 10, 1917

Flower: Pansy

Colors: Black and Gold

Chapter Name: Beta Epsilon

Comments:



KΔ



"K.D. — we're still the one."

KAPPA DELTA

"K D's"

305 N.W. 25th

754-2163

Founded: Longwood College, October 23, 1897

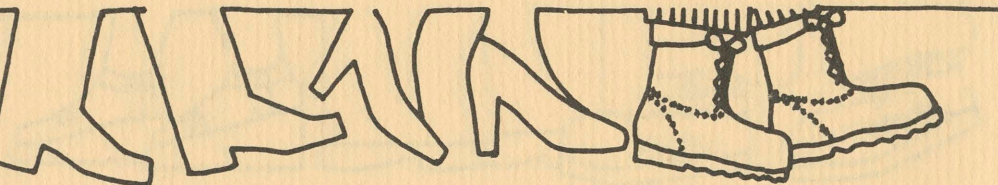
Established on the OSU campus: October 16, 1926

Flower: White Rose

Colors: Olive Green and Pearl White

Chapter Name: Alpha Kappa

Comments:



KKΓ



"Kappa is a place to learn about yourself, through others."

KAPPA KAPPA GAMMA

"Kappa's"

1335 N.W. Van Buren

754-3671

Founded: Monmouth College, October 13, 1870

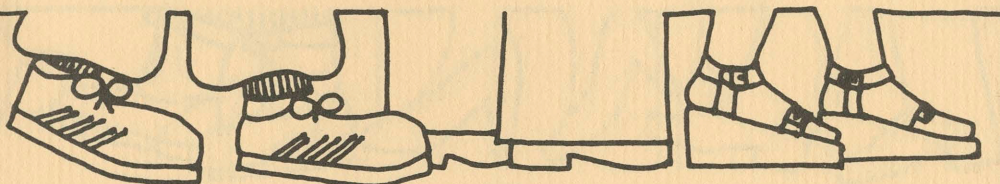
Established on the OSU campus: June 7, 1924

Flower: Fleur-de-lis

Colors: Sky and Sea Blue

Chapter Name: Gamma Mu

Comments:



ΠΒΦ



"You give but little when you give of your possessions. It is when you give of yourself that you truly give." – Kahlil Gibran

PI BETA PHI

"Pi Phi's"

2685 N.W. Taylor

752-5533

Founded: Monmouth College, April 28, 1867

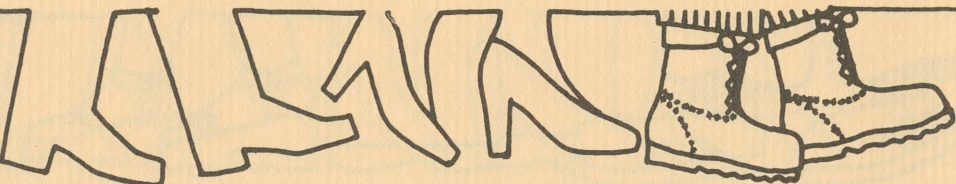
Established on the OSU campus: May, 1917

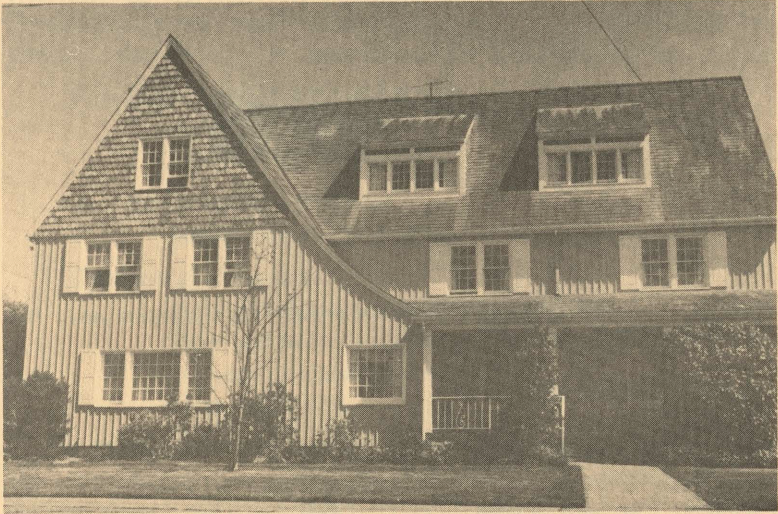
Flower: Wine Carnation

Colors: Wine and Silver Blue

Chapter Name: Oregon Beta

Comments:

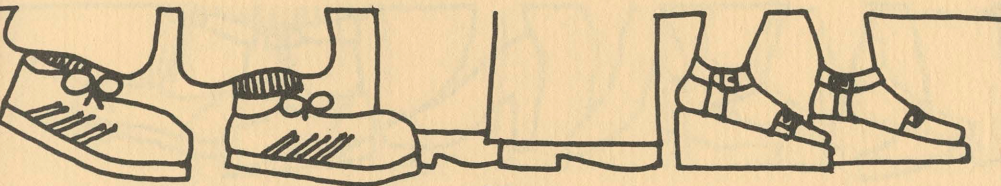


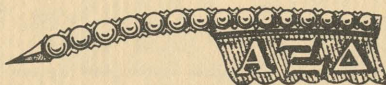


"A place to grow, with a flexible system, find individuality, sensitivity in fun-loving girls who are interested and diversified in academic areas and campus activities.

SIGMA KAPPA
"Sigma Kappa's"
231 N.W. 26th
754-3660

Founded: Colby College, November 9, 1874
Established on the OSU campus: May 31, 1918
Flower: Violet
Colors: Lavender and Maroon
Chapter Name: Upsilon
Comments:





"Golden moments, shining hours, a circle of friends. The challenge is yours. This is Alpha Xi Delta."

ALPHA XI DELTA

"Alpha Xi's"

2311 N.W. Van Buren

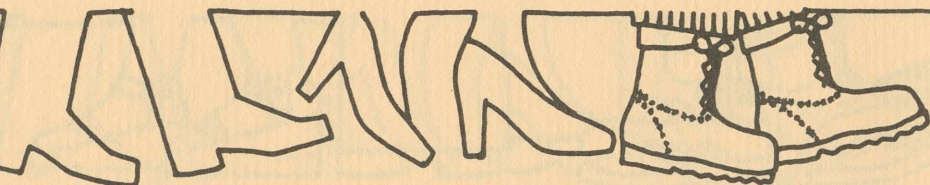
Founded: Lombard College, April 17, 1893

Established on the OSU campus: May 30, 1919

Flower: Pink Killarney Rose

Colors: Gold and Double Blue

Alpha Xi Delta is establishing a new chapter at OSU. We offer opportunities for lifetime friendship, establishing traditions, leadership training and participation in meaningful service. We invite you to meet with us during Fall Formal Rush to discuss becoming a part of this vital force on campus.



EXPENSES

Each sorority bills its members monthly or quarterly for room, board and special activities. Sorority expenses are greater during the first year of membership, because of the pledge and initiation fees. Several groups also require payments of building fund fees during that period. You can expect expenses to be approximately as follows:

Fees paid once:

pledge fee — \$15-\$25

initiation fee — \$58-\$115

Fees paid irregularly per year:

building fund — \$45-\$156

Expenses paid monthly:

room and board — sorority — \$135-\$180

room and board — residence hall — \$152-\$194

dues and miscellaneous — \$15-\$25

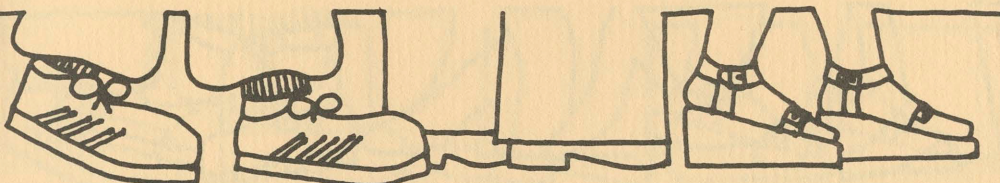
extra — \$10-\$15

The building fund is paid in various ways. Six sororities require the total building fund paid the first year. Others pay monthly amounts for two, three or all four years.

Dues and miscellaneous cover such things as meals at the sorority for pledges and members living out, social fees, gifts, and special assessments determined by the sorority.

Extras include expenses such as telephone calls, house dance pictures, sorority jewelry and sportswear, initiation gifts, etc. These expenses are entirely individual; some women spend very little, and some spend a lot.

Because of individual billing procedures and cost differences, you should ask your Panhellenic delegate for detailed expense breakdowns during rush. Detailed financial statements are sent to the parents of new pledges at the time of pledging.



RUSHING RULES

ELIGIBILITY TO RUSH

You are eligible to rush if:

- A. You have been officially admitted to OSU in good standing,
- B. You have completed 12 or more quarter hours of previous college work with a 2.25 accumulative college GPA, and a 2.25 for the most recent term.
- C. Individual sororities may set higher requirements for pledging.

Panhellenic will check your grades and hours with the Registrar's office, and your OSU admission GPA will be placed on the official rush list.

PETITIONING

If the above qualifications are not met, a written petition must be submitted well in advance of the registration deadline to the Panhellenic vice president. The petition is to contain supporting material to explain why either of the GPA's do not meet the 2.25 requirement, or the hour requirement is deficient.

Petitions should be submitted to:

Karen Froehlich, Vice President
Oregon State Panhellenic Council
A200 Administrative Services Building
Oregon State University
Corvallis, Oregon 97331
754-3661

DETAILS ON REGISTERING FOR RUSH

The official registration form found in the back of this handbook is used for all rush periods. For fall formal rush, mail the completed form with a check or money order for \$15, payable to Oregon State Panhellenic Council, to: Panhellenic Council, A200 Administrative Services Building, Oregon State University, Corvallis, Oregon 97331, **by August 15, to insure arrival by August 31.** For any informal rush period, return the form to the Panhellenic office by the date announced.

If for some unavoidable reason you are unable to participate in fall formal rush, the Panhellenic rush fee (\$15) is refundable prior to September 10, 1978.



FALL FORMAL RUSH PROCEDURE

During a formal rush period, no woman may be rushed who has not officially registered. If you wish to rush in September, you must have registered and paid the Panhellenic fee **before** August 31, preceding the fall formal rush period. You are encouraged to submit the registration **form and fee by August 15** to insure arrival by August 31. **Both the form and the fee** must be received by August 31, and phone calls cannot be accepted. **PANHELLENIC WILL NOT BE RESPONSIBLE FOR LATENESS DUE TO MAIL SERVICE.**

All registered students will be sent official receipt cards verifying registration. If a card is not received within two weeks of the date the registration form was mailed, it is your responsibility to contact Panhellenic to confirm your status.

Prior to formal rush periods, there will be meetings to explain rush rules and procedures to all rushees.

Rushees are required to accept the maximum number of invitations possible on the 9-party and 6-party days of rush. Rushees also must attend the maximum number of accepted preference parties unless ill or excused by the Panhellenic office. Non-attendance may drop you from rush.

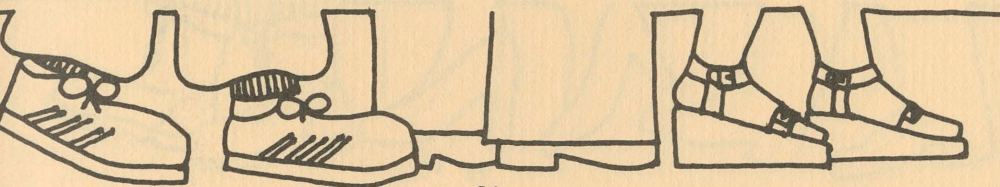
Names of pledges shall be released for publication by the Panhellenic office at the end of formal rush unless requested to do otherwise.

INFORMAL RUSH PROCEDURES

Sororities whose full membership, members and pledges, does not exceed their quota-total, or sororities who have not filled their pledge quota may hold informal rush and pledging during the year.

To be eligible to be pledged in an informal rush period, you must fulfill the scholastic requirements for formal rush.

Payment of the formal rush fee entitles a student to rush privileges for the academic year (September to June). An informal rushee who did not participate in formal rush must pay half of her Panhellenic fee (\$7.50) at the time of registration, and the other half at the time her pledge card is turned into the Panhellenic office.



A student is not officially pledged until the Panhellenic office has her signed pledge card on file, and she has paid her Panhellenic fee. The fee, pledge card and rush fee, must be turned in to the Panhellenic office within 48 hours of pledging.

Lists of students pledged during informal rush shall be released for publication by the Panhellenic office each term following the informal rush period, unless requested to do otherwise.

FORMAL RUSH REGULATIONS

Silent period is the time during which sorority members may wear pins and talk to rushees on campus, but no coke dates or meetings between rushees and affiliated women are allowed. Silent period begins upon arrival at Corvallis and remains in effect on and off campus until ribbon pledging at the end of formal rush.

Sorority members may not go to the residence halls and may not telephone rushees. (If absolutely necessary, a sister of a women in a sorority may be an exception.) If communication with a rushee is necessary, contact the Panhellenic office.

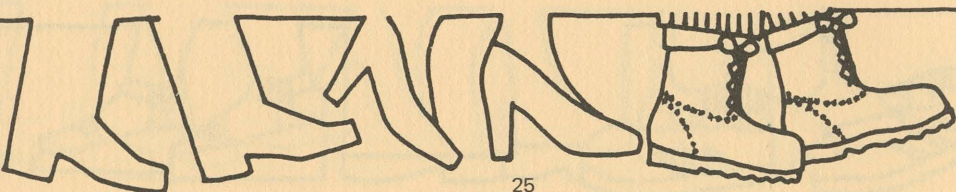
No affiliated women except Panhellenic officers and delegates, without pins and other fraternal identification, may go into an independent living group during silent period.

Panhellenic officers and delegates cannot wear or display any sorority insignia or emblems until fall term ribbon pledging.

Absolutely no form of rushing, other than specified parties, is to take place during formal rush periods. Rushees are not to attend any functions with affiliated women other than sorority rush parties.

Themes, decorations, or favors (napkins, place cards, name tags, etc.) used at formal rush functions cannot be taken from the sorority house until formal rush has ended.

Only sorority members and pledges may present entertainment at rush parties. (Housepersons may serve refreshments only.) Alumnae and actives from other chapters are considered sorority members.



Rushees are expected to attend all rush parties to fulfill their requirements for pledging. Failure to meet this obligation could minimize one's chances for pledging. In cases of illness or emergency, the Panhellenic office, not individual sororities, should be contacted.

It is the policy of OSU that the collegiate members of sororities are free to pledge and initiate without regard to race, color, or religion, or without approval or veto from an outside individual or agency. If alumnae or friends wish to send a letter on your behalf, they should send it to the following address:

(Name of Sorority)
c/o Panhellenic Office
A200 Administrative Services Building
Oregon State University
Corvallis, Oregon 97331

We will forward all letters as appropriate.

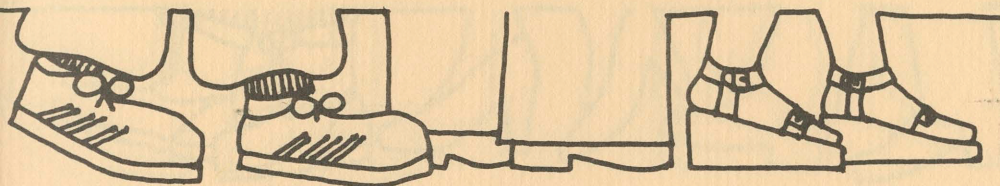
QUOTA-TOTAL SYSTEM

Each sorority is limited in its total membership and, therefore, in its total number of pledges per year, by what is called a quota-total system.

Each year, the Oregon State University Panhellenic establishes a new pledge quota for sorority membership. The number of pledges allowed each chapter is determined by the total number of women interested in sorority membership.

This quota-total system should not influence in any way, your choice of a sorority. The reasons for following such a system have been given by the National Panhellenic Conference. The Oregon State University Panhellenic wants you to know and understand these reasons:

- A. To give each rushee maximum opportunity to pledge
- B. To provide sorority experiences to as many as possible
- C. To maintain strength in the sorority system



SUMMER ORIENTATION AND ADVISING PROGRAMS— SOAP

All freshmen participating in fall formal rush are urged to take advantage of the Summer Orientation and Advising Programs on campus in July. Pre-registration for SOAP is necessary. These dates are July 10, 13, 17, 24 and 31.

All freshmen who cannot attend SOAP should plan to attend the fall orientation session on registration procedures on Monday, September 18, in Milam Auditorium, (Home Economics) according to the following alphabetized schedule:

A-L 1:30 p.m.

M-Z 2:30 p.m.

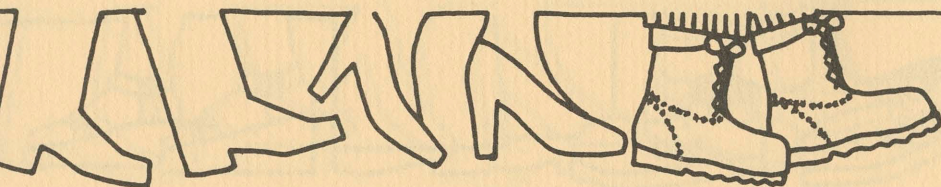
All transfer students should plan to attend orientation sessions that same day according to the following alphabetized schedule:

A-L 10:00 p.m.

M-Z 11:00 a.m.

Be sure to send your Fall Formal Rush registration form by **August 15** to insure arrival to Panhellenic by **August 31**. If you have any questions, please write, call, or stop by:

OSU Panhellenic Council
A200 Administrative Services Bldg.
Oregon State University
Corvallis, Oregon 97331
(503) 754-3661



REMEMBER . . .

Read this handbook carefully. Refer to it for answers to questions you may have. **BE SURE TO BRING THIS HANDBOOK WITH YOU TO RUSH!! THERE WILL BE A \$1.00 CHARGE FOR AN ADDITIONAL HANDBOOK.**

Read the rushing rules and know them well.

Dress comfortable, and don't forget your umbrella!

Be on time!

Keep your opinions to yourself. Rush is a personal concern, and pledging is **your** decision.

Don't let others influence your decisions. Each sorority on this campus is a good sorority. The "best" sorority is the one that is the best for you.

Talk to your Panhellenic delegate. She is at your service with information, personal experience in the Greek system, and a genuine desire to help you. She can't make a decision for you, but her guidance can be invaluable. You will be learning a whole new Greek vocabulary during rush, so don't hesitate to ask your delegate about any terms you are unfamiliar with.

During rush, sorority women want you to feel free to ask any questions such as:

Why are you in a sorority? How has sorority life benefitted you?

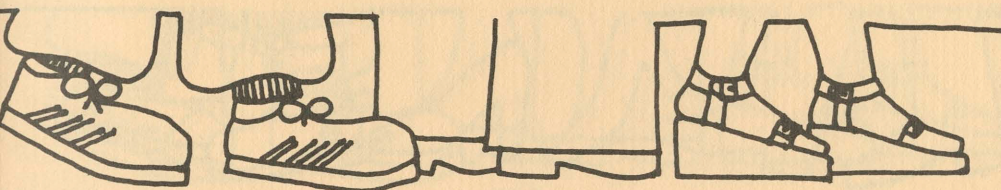
What is your big sister program like?

What are the financial obligations of a pledge? A member?

What kind of mandatory functions do you have?

What are your academic requirements?

What are some of the activities and duties of a pledge?



WHAT WILL IT BE LIKE?

The first and second days of rush will give you an opportunity to see all of the sororities on the OSU campus. These two days are designed to let you see the individual characteristics that make each house unique. The atmosphere is relaxed and casual, with each party lasting 30 minutes. Entertainment will vary from skits and programs to discussion games and singing.

The third day is basically a free day. This is your chance to meet with your delegate, tour the campus or just relax.

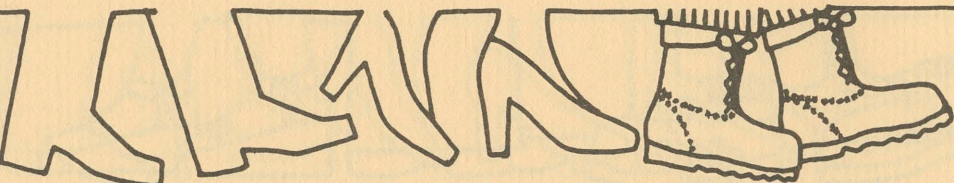
During the fourth and fifth days of rush, you will be spending 35 minutes at a maximum of nine sororities. Since you have begun a process of mutual membership selection, you will begin to see familiar faces at the houses you visit. You will have more personal interaction with sorority women, and will probably have more questions about the sorority. Please don't hesitate to ask these questions.

The sixth day of rush consists of a maximum of six 45 minute parties. At this time, your feelings for individual sororities are becoming more definable. The sororities will try to give you a glimpse of what they have defined for themselves as a group of college women.

On the seventh day of rush, you may attend a maximum of three 75 minute preference parties. This is the final round of parties, bringing the rush parties to a close. The sorority women will try to share the feelings they have for their group's ideals and bonds, as sisters and as closest friends.

After returning from preference parties, you will sign a card designating, in preferential order, the sororities you would like to pledge. The details of preferencing will be explained to you by your Panhellenic delegate.

The final day of rush is the day you will receive your invitation (bid) to pledge a sorority. Bid night is a time when you, as a new pledge will be welcomed into your new home by your new sorority sisters!



WHAT SHOULD YOU WEAR?



Campus

Dress:

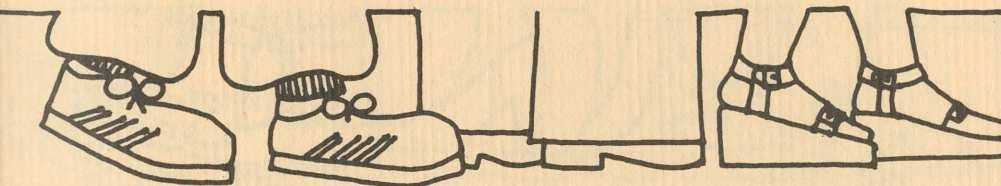
Skirts, pants, blouses, sweaters, dresses and comfortable walking shoes (Monday-Saturday).



Preference

Dress:

Long dresses, short dresses, skirts, and comfortable shoes (Sunday).





Rain

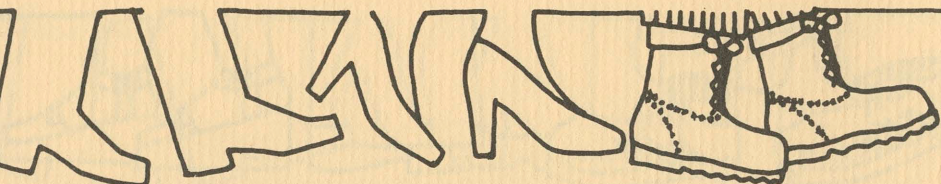
Wear:

Rain coats, slickers, boots, closed shoes, rain hat, and of course, your umbrella.

Bid

Night:

Nice dresses or pants are suggested.



MONDAY, SEPTEMBER 18

Seven Open House Parties — 30 Minutes Each — Campus Dress

- | | | |
|------------|------|---|
| 4:15 | p.m. | Dinner, Weatherford Dining Hall ONLY
(Meals provided only for those rushees with residence hall contracts) |
| 5:00- 5:45 | p.m. | Meet with delegate in MU room
(Check MU 213 for directions) |
| 6:00-10:30 | p.m. | Seven Open House parties |

TUESDAY, SEPTEMBER 19

Seven Open House Parties — Continued

- | | | |
|------------|------|---|
| 4:15 | p.m. | Dinner, Weatherford Dining Hall ONLY
(Meals provided only for those rushees with residence hall contracts) |
| 5:15- 5:45 | p.m. | Meet in MU room |
| 6:00-10:30 | p.m. | Seven Open House parties |
| 10:40- | p.m. | Blue Carding, MU room |

WEDNESDAY, SEPTEMBER 20

Meetings with non-freshmen — MU room

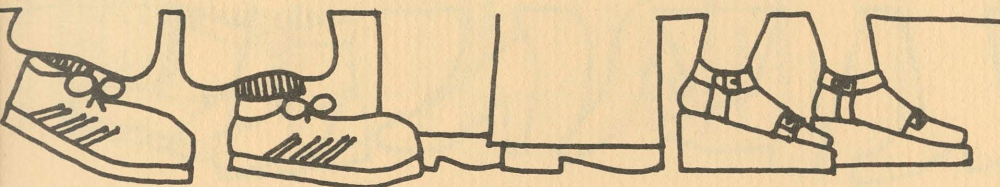
- | | | |
|------|------|-------------------------------|
| 2:00 | p.m. | Groups 1-5 |
| 2:30 | p.m. | Groups 6-10 |
| 3:00 | p.m. | Groups 11-14 |
| 7:00 | p.m. | Invitation accepting, MU room |

THURSDAY, SEPTEMBER 21

Fall term class registration 8:00 a.m. - 6:00 p.m.

Five Parties of Nine-Party Schedule — 35 Minutes Each — Campus Dress

- | | | |
|------------|------|------------------------------------|
| 6:00 | p.m. | Meet in MU room for party schedule |
| 6:30- 7:05 | p.m. | 1st party |
| 7:15- 7:50 | p.m. | 2nd party |
| 8:00- 8:35 | p.m. | 3rd party |
| 8:45- 9:20 | p.m. | 4th party |
| 9:30-10:05 | p.m. | 5th party |



FRIDAY, SEPTEMBER 22

Four Parties of Nine-Party Schedule — Continued

8:35	a.m.	Meet in MU room
9:00- 9:35	a.m.	6th party
9:45-10:20	a.m.	7th party
10:30-11:05	a.m.	8th party
11:15-11:50	a.m.	9th party
12:00-noon		Blue Carding, MU room
10:00	p.m.	Invitation accepting, MU room

SATURDAY, SEPTEMBER 23

Six Parties — 45 Minutes Each — Campus Dress

8:30	a.m.	Meet in MU room for party schedule
9:00- 9:45	a.m.	1st party
9:55-10:40	a.m.	2nd party
10:40-11:40	a.m.	LUNCH BREAK
11:50-12:35	p.m.	3rd party
12:45- 1:30	p.m.	4th party
1:40- 2:25	p.m.	5th party
2:35- 3:20	p.m.	6th party
3:30-	p.m.	Blue Carding, MU room

SUNDAY, SEPTEMBER 24

Preference Night — 75 Minutes Each — Dressy Dresses — Progressive Dinner

2:30	p.m.	Invitation accepting, MU room
6:30	p.m.	Meet in MU room for party schedule
7:00- 8:15	p.m.	1st party
8:30- 9:45	p.m.	2nd party
10:00-11:15	p.m.	3rd party
11:30-	p.m.	Preferencing, MU room

MONDAY, SEPTEMBER 25

Bid Night — Nice Dresses Suggested

6:30	p.m.	Meet in MU room for BID!
------	------	--------------------------



REGISTRATION FORM INSTRUCTIONS

1. Fill out both sides of the registration card using the name by which you have registered at OSU. Please print in ink or type.
2. Fall formal rushees enclose registration form with a check or money order for \$15 rush fee, payable to OSU Panhellenic Council.
3. Mail by **August 15, 1978**, to OSU Panhellenic Council, A200 Administrative Services Building, Oregon State University, Corvallis, Oregon 97331, to insure its arrival by **August 31, 1978**.
4. If you do not receive a receipt card within two weeks of the date the registration card was mailed, it is your responsibility to contact Panhellenic to confirm your status.

FOR OFFICE USE ONLY	
Date Rec'd.	GPA
Receipt No.	List No.
LSA.	

Name. Last First Middle Age

Home Address. Street No. State City Telephone

Name of Parent or Guardian. Last First Middle

Parent's or Guardian's Address (only if different from yours) Street No. State City Telephone

High School Attended City State

Grade Point: High School

I will be a _____ 1st term _____ 2nd term _____ 3rd term _____ Fresh _____ Soph _____ Jr. _____ Sr. _____

Previous colleges attended (including OSU) City State

Grade Point: Previous College Accum. GPA _____ Most recent term GPA _____

OSU address (if known) Telephone

Enclosed () \$15 Formal Registration Fee () Check () Money Order
 () \$7.50 Informal Registration Fee, balance payable upon pledging

I authorize Panhellenic to verify my grades with the office of the Registrar, and to make them and information on this form available to all the sororities.

Signature of Student Date

OSU Address Telephone
(if known)

Panhellenic **does not** provide rush week housing!

_____ I have made arrangements for housing, which I understand is my responsibility.

I have housing for: (check first three if applicable) _____ fall term _____ winter term _____ spring term

_____ I have made only temporary arrangements, and hope to move into the sorority I choose to pledge as soon as possible.

Family sorority affiliation (mother, sisters, or grandmothers, ONLY). Name of sorority, also.

High School Activities: (High School Attended)

College Activities:

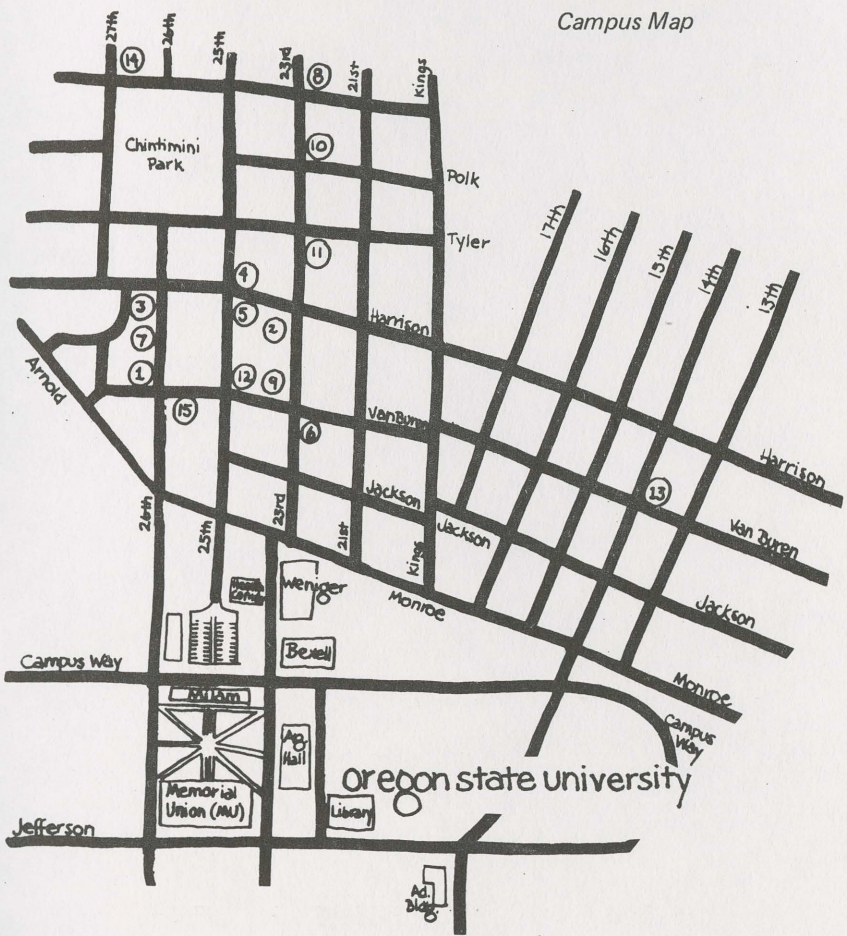
Expected Major:

Name (Nickname preferred)
Signature

Sororities at Oregon State University

- | | |
|----------------------|-----------------------|
| 1. Alpha Chi Omega | 9. Alpha Xi Delta |
| 2. Alpha Delta Pi | 10. Gamma Phi Beta |
| 3. Alpha Gamma Delta | 11. Kappa Alpha Theta |
| 4. Alpha Omicron Pi | 12. Kappa Delta |
| 5. Alpha Phi | 13. Kappa Kappa Gamma |
| 6. Chi Omega | 14. Pi Beta Phi |
| 7. Delta Delta Delta | 15. Sigma Kappa |
| 8. Delta Gamma | |

Campus Map



OSU Panhellenic Council
A200 Ad. Building
Oregon State University
Corvallis, Oregon 97331