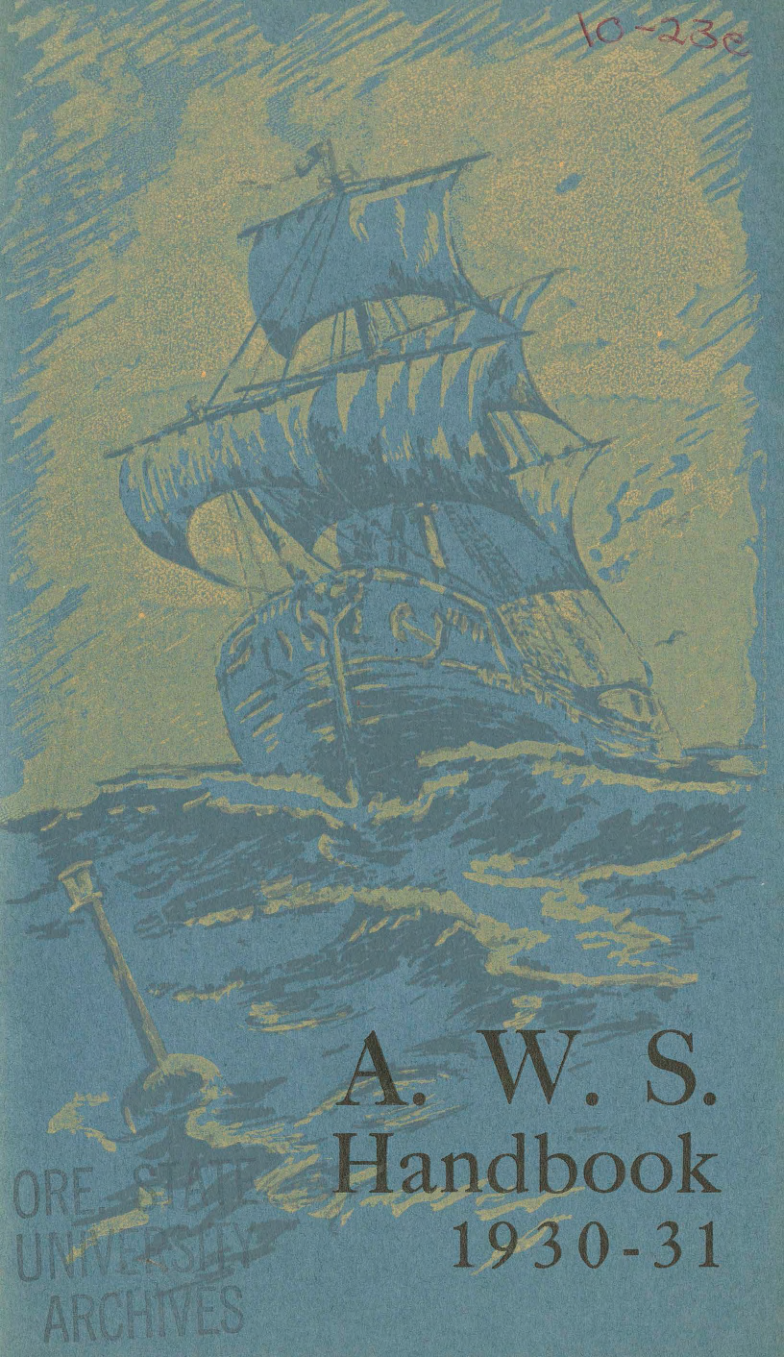


10-23e

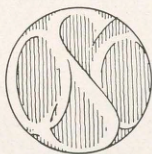


A. W. S.  
Handbook  
1930-31

ORE. STATE  
UNIVERSITY  
ARCHIVES



Associated Women Students  
**HANDBOOK**



ORE. STATE  
UNIVERSITY  
ARCHIVES

Edited By  
Theta Sigma Phi

Oregon State College  
1930-31



*Dear Freshman Girl:*

*Captain and Crew of the good old ship O. S. C. welcome you as one of its special passengers. They are looking forward to taking you on a four years' journey to show you new sights and give you glimpses of unexpected opportunities. What a thrill you will get when you stop at some of these ports of entry! This four years' journey should give you the information, training and outlook that will help you to fill satisfactorily your place in any community. And so, as the Frenchman would say,*

*"Bon Voyage."*

(MRS.) K. W. JAMESON,  
Dean of Women.



*Dear Freshman Girl,*

*We, the older members of the crew, welcome you as fellow voyageurs on our good ship O. S. C.*

*We have already grown to love our ship and to cherish many happy memories of good times in the past and look forward with pleasure to many more to come which we may share with you.*

*This little book has been prepared for your use by some of our more experienced voyageurs with the hope that it may make your passage more pleasant and help to avert stormy days at sea.*

*With best wishes for a most successful trip,*

BETTY ROBLEY,  
*President, Associated Women  
Students.*

ASSOCIATED WOMEN STUDENTS  
OREGON STATE COLLEGE

OFFICERS 1930-31

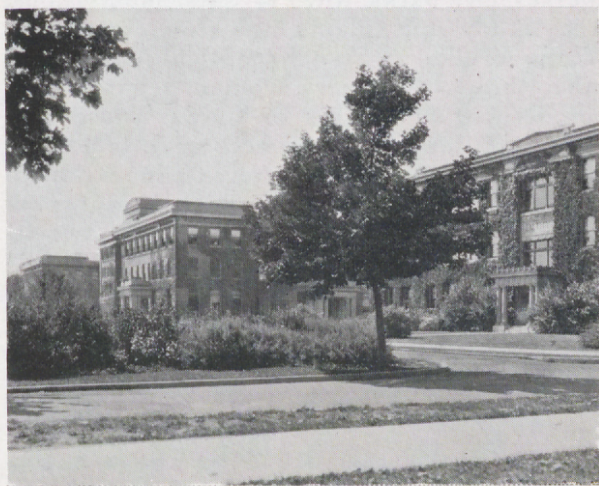
President.....Betty Robley  
Vice-President.....Billy Cupper  
Secretary.....Elizabeth Fletcher  
Treasurer.....Alice Fish  
Sergeant-at-Arms. Grace Baird

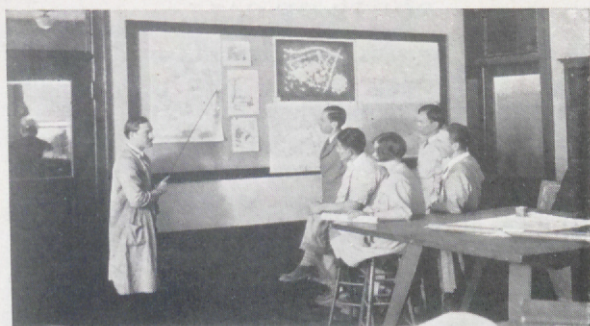
## PORTS OF CALL

And now, as we cruise down the coast of the Land of Learning, each of you must choose where you will stop. There are 10 major ports where many different but related activities are carried on, and there are several smaller, less comprehensive landing places. As we glide past you will be told briefly what is being done at each place, and when you have seen them all we will turn back, and each passenger may go ashore to spend four years at the port of her choice.

Some of the ports, including the one we are just coming to, are inhabited mostly by men, and you will be given only a fleeting glimpse of these. Occasionally, though, women do find these ports exactly suited to their needs and desires.

Everyone on deck now! In the distance you will see a city known as the School of Agricul-





ture. As we said, men make up by far the greater part of the population here, but there is a famous suburb, called Landscape Architecture, where women find many fascinating occupations. They learn to design grounds for country estates, city homes, to plan gardens, golf courses, city parks, town layouts, subdivisions. They study soils, plants, art, architecture, and of course, history, French, political science, and other things that every woman, regardless of her occupation, desires to know. Those who stop here may wish to become professional landscape architects, or merely to know how to make their own homes more beautiful. An occasional girl will also be found in the town itself, taking bee culture, dairying, poultry husbandry, horticulture, or even farm crops.

In a few minutes we shall come in sight of the port of Chemical Engineering, another place in which the population is predominantly male, but a few women also find this place exactly to their liking. The principal building in this town is the "Chem Shack" where the inhabitants

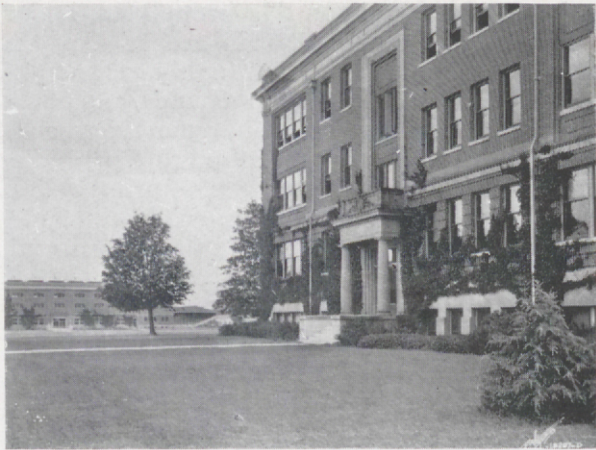


make such things as "isopropylketone" or "phenylenediamine." Sounds rather staggering, doesn't it, but they thoroughly enjoy tinkering with chemicals and compounds, and pouring things together to make something else. Some of them plan on getting highly paid jobs as experts in hospitals or manufacturing plants when they leave, while others will go away to teach.

The next town is one of the largest on the coast and men and women alike are prone to sojourn here. It is known as the School of Commerce, and if you listen carefully you may hear the click, click of typewriters, adding machines, comptometers, mimeographs and bookkeeping machines. The town is full of snappy, business-like persons, and buzzes with all the activities of the business world. The people here are learning everything from stenography to business administration, including advertising and selling, accounting, auditing, political science, economics and sociology, and many other things.

We are now passing the School of Engineering and Mechanic Arts, where women rarely





stop, so we sail swiftly on to the School of Home Economics, where only women live. Some of them are learning to be good homemakers, others are planning to teach or go into one of the many phases of professional or extension work. They study foods and nutrition, clothing and textiles, problems of home management, cafeteria management, weaving and all kinds of artistic needlework, home nursing, child care, and many other things connected with home life, and then, each girl, sometime during the last year of her stay, spends six weeks in one of the home management houses, putting her knowledge into practical use, even to the extent of taking full charge of a real live baby for one week.

A very great deal more could be told about the School of Home Economics and the girls who live there, but the School of Forestry is



coming in sight so we shall have to pass on. Forestry is another place where one would expect to find mostly men, but an occasional co-ed who is especially fond of an outdoor life will leave the boat here.

That place we just passed, which looked like a huge fort, was the Department of Military Science and Tactics, where only soldiers are allowed. In the School of Mines, just coming into view, the co-ed is also the exception, but in a few minutes we shall see the School of Pharmacy, where men and women mingle amid the smell of drugs and rows of mysterious bottles to learn the art of concocting medicines and toilet articles and other things that druggists do. Here, also, they revel in long words and mysterious mixtures. The men outnumber the women, but more women arrive each year. The classes are small and many friendships are



formed among the "Pill-rollers" as the inhabitants are called by people from the other ports.

If you feel that your mission in life is to teach some vocational subject, no matter what, you will choose the next port for your visit. It is the School of Vocational Education, and is also popular with both men and women. Visitors here are trained in the major vocational field which they choose, and are also taught psychology and principles of teaching, are given instruction in the solving of problems of education, and finally, before they leave they have opportunity for actual experience in teaching.

We have now passed all the larger ports, and now approach the smaller ones, where you can stop and study to your heart's desire, but you receive no degree in recognition of your work. Of course, many persons pay short visits to these places while working in another school, and find their time well and enjoyably spent.

The School of Basic Arts and Sciences, for instance, provides its visitors with training in art and rural architecture, bacteriology, botany and plant pathology, chemistry, English language and literature, entomology, history, mathematics, modern languages, physics, public speaking and zoology. All of the major schools require their inhabitants to visit this port for basic or cultural courses in some of these subjects.

The School of Health and Physical Education is a port serving all students by providing recreation, supervising health conditions, and providing training in physical education and sports.

Then there is the Department of Music, where many voyageurs like to spend a part of their four-year visit. Here persons study under truly eminent musicians. Students belong to the orchestra, the glee and madrigal clubs, or the band, and while they work hard, they are





very enthusiastic and find a great deal of pleasure in accomplishment.

The Department of Industrial Journalism is another lively, interesting little place where visitors from the bigger ports like to pay rather extended visits. They learn to report campus events and information for newspapers, and feel the thrill of seeing the things they have written in print in the Daily Barometer and other campus publications. Those who have the urge to study feature writing, editing, and other phases of the work, in connection with their technical specialty, sometimes find their efforts rewarded by checks from outside newspapers and magazines, and often when their course is completed they find employment, especially in technical subjects such as home economics, engineering, horticulture, etc., in the journalistic field, some of them later becoming owners and publishers of periodicals.

You have now had a very brief glimpse of the things and people you may find in this Land of Learning, and it will soon be time for you to choose your port. Choose carefully, but wherever you go, if you are cheerful, industrious, ambitious, and friendly you will find that there are many pleasures and profits of which you never dreamed.

## CLOTHES FOR THE CRUISE

The question of a wardrobe should never keep one from joining the happy group who are starting out on this wonderful four-year cruise on the steamship "O. S. C." with its many and varied opportunities. For really one's clothes are a minor consideration if they suit one's personality and are kept neat, clean, and well pressed.

And let us remember not to start on the voyage with a complete outfit, for we probably will want to have something new on the way. Then too, we may make ourselves something new in one of the sewing courses. If our wardrobe were already complete, it would mean money expended unnecessarily.

A neat one- or two-piece dress or a sweater and skirt will make us feel always appropriately dressed for everyday wear while walking on deck and also when inside attending classes. To go with this, we should have good heavy oxfords for we shall do a great deal of walking, and with shoes of this type lisle hose are very good.





For those rainy and stormy days, we shall need a raincoat and a hat—shall it be felt, perhaps? How cheery those dark days will seem with bright-colored raincoats scattered over the horizon. A heavier coat will be needed when old man winter comes with his occasional frost and snow.

A silk dress, not at all elaborate, is desirable for church on Sunday, for special dinners or for informal dancing. Navy blue or some other dark color is most suitable, economical, and oh, so smart nowadays! The stores offer most astonishing values, and when we can make our own, the cost is very little. Dark shoes of patent, kid, or suede will add a pleasing touch.

Each one of us will want a simple evening dress to wear to those formal dances. Here



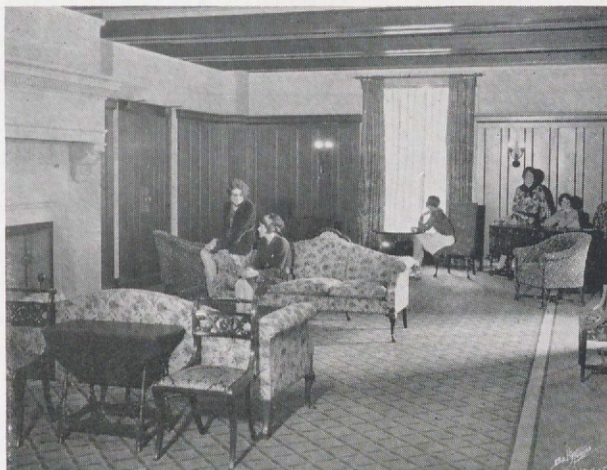
again most beautiful materials can be bought at a low price and be made into charming creations. Or, if we are careful buyers, we can watch our opportunity to buy one at a reduced price.

Now that the clothes talk is over, this doesn't seem like such a great problem, does it? For our clothes do not make us, anyway, and we are all going to have a glorious and prosperous voyage together.

### THE SOCIAL SIDE OF THE CRUISE

And for entertainment! Put aside dull care and studies for a few hours. Clear the upper decks for dancing and good times.

Futuristic decorations, hidden lights and revolving mirrored globes characterize the All-



College formal held near the beginning of the Cruise. The Sophomore Cotillion and Junior Prom both are ushered in during the middle or winter term of the tour. The Military Ball, with its flags and instruments of warfare, is sponsored by Scabbard and Blade near the end of the annual cruise.

The Senior Ball, too, is a much-looked-for event, and is always one of the biggest successes of the trip. Newcomers or rooks and rookesses always welcome the Rook dance as a better means for getting acquainted.

And for good eats—the waffle breakfast! Music and dancing while you eat. This affair is held annually by the Y. W. C. A.

One of the biggest features of the social side of the cruise is the Co-ed Ball. For then all women and solely women take part in masquerade. Prizes and features by the housemothers enliven the entertainment.

And if you don't care for dancing, there is music and drama. Sunday concerts by the Oregon State Symphony Orchestra are given four times during the cruise. National Collegiate Players and classes in community drama entertain with many plays in the Little Workshop and Majestic theaters.

The annual Woman's Stunt Show, given by half the sororities and women's halls each year, and the Junior Follies, an all men's production, also provoke much mirth-making in the audience.



## ACTIVITIES FOR THE FRESHMAN GIRL

We had only begun our cruise, but the view ahead looked bleak and dreary. Suddenly someone espied, off to the right, a beautiful, winding river. This, we discovered, took us to our destination also, but was different in that it was packed with many more interesting and exciting things to do. All along the way we found

ACTIVITIES FOR THE FRESHMAN GIRL.

These include the Y. W. C. A. with its teas, benefit bazaars, and social gatherings planned to enlarge the acquaintance of the new students and to aid those interested in that type of work.

For those interested in journalism there is the opportunity to work as secretaries to the editors of the Beaver, annual publication, and to the Barometer, the daily newspaper. By spending from three to five hours a week in the office, one learns the College's policies, and takes a step toward making the staff. One term of elementary industrial journalism is required to make the



staff of either the paper or the annual. Staff members are then chosen from the outstanding students. Campus journalism offers chances to enter into some of the most important activities of the College.

Individual and team sports include hockey, basketball, baseball, volleyball, tennis, quoits, natural dancing, clogging, archery, swimming, hiking, and canoeing. Points are offered for making teams. With the earning of 50 points one may join the Women's Athletic Association, organized to promote athletics for women on the campus.

The Madrigal Club, directed by Professor Paul Petri of the Department of Music, is composed of women talented in singing. During the year the club gives several concerts, and sings at major social functions.



Associated Rookesses is an organization of freshmen women who aid the Associated Women Students in clerical work, and serve as guides during Mothers' week-end.

A goal not to be overlooked by any freshman student is the possible attainment of a Phi Kappa Phi freshman certificate offered to men and women making a 91 average during their freshman year. It is a step to the coveted honor societies in junior and senior years.

Besides these many specialized opportunities are the committees for special occasions such as the Educational Exposition, Co-ed Ball, Homecoming dances, and freshman class offices.

By entering into college activities, a woman gains valuable friendships that she could not have made otherwise, secures a better appreciation of scholastic attainments, and finds the true spirit of college life.

## ACTIVITY POINT SYSTEM

The Activity Point System has a twofold purpose: to encourage scholarship and to widen student participation in activities.

Grades and activities are closely related. If too much time is devoted to extra-curricular affairs, scholarship suffers.

Since the aim of college is academic achievement, nothing must hinder the attainment of this objective. Therefore, student activities must hold a position of secondary importance to scholarship.

O. S. C. is an institution of democratic principles. In practicing those principles, it enjoys an enviable reputation among other colleges. But lest these ideals be sacrificed, all student activities—the one big source of our spirit of fellowship and democracy—must be open to everyone. Activities, when carried prudently, have an important function in college life. Educators recognize this. All students are entitled to the benefits. It is unfair to the group for a few to dominate the limited number of activities.

The work of the point system committee is to adjust the position of the few to that of the group. This is done by allotting to each activity a certain number of points, based on a standard of 100 points. The total points for all activities engaged in by a student must not exceed the *maximum* number of 100 points.

With adherence to the number of points which each student may carry, the benefits of



higher scholarship and increased student participation in activities will follow. It is with pleasure and anticipation that the Activity Point Committee awaits your participation and cooperation in this phase of college life.

ACTIVITY POINT COMMITTEE

By HARVEY PEASE, Chairman.

## STUDENT BODY ORGANIZATIONS

Second Vice-President Associated Students.....	30-30-30
Secretary Associated Students .....	50-50-50
Board of Control Associated Students .....	25-25-25
Member Greater O. S. C. Committee .....	25- 0-40
Secretary Greater O. S. C. Committee .....	25- 0-25
Member of Point System Committee .....	25-25-25
Member of Honor System .....	25-25-25
Member of Memorial Union Committee .....	20-20-20
Member of Social Committee .....	20-20-20
Member of Student Council .....	25-25-25
Member of Pep Committee .....	25-25-25
Associated Women Students .....	5- 5- 5
Associated Rookesses .....	5- 5- 5
Member of Board of Governors .....	20-20-20
Chairman of Homecoming Committee .....	35- 0- 0
Member of Homecoming Committee .....	20- 0- 0
Chairman of Exposition Committee .....	0-35- 0
Member of Exposition Committee .....	0-20- 0
Chairman of Campus Week-end Committee .....	0- 0-35
Member of Campus Week-end Committee .....	0- 0-20
President of Associated Women .....	50-50-50
Vice-President Associated Women .....	30-30-30
Secretary Associated Women .....	15-15-15
Treasurer Associated Women .....	15-15-15
Secretary of Coop Association .....	10-10-10
Treasurer of Coop Association .....	10-10-10

## CLASS OFFICERS

### SENIOR CLASS

Secretary .....	30-30-30
Vice-President .....	25-25-25
Chairman of Standing Committee .....	15-15-15
Member of Standing Committee .....	10-10-10

### JUNIOR CLASS

Secretary .....	30-30-30
Vice-President .....	25-25-25
Chairman of Standing Committee .....	15-15-15
Member of Standing Committee .....	10-10-10

### SOPHOMORE CLASS

Secretary .....	30-30-30
Vice-President .....	25-25-25
Chairman of Standing Committee .....	15-15-15
Member of Standing Committee .....	10-10-10

### FRESHMAN CLASS

Secretary .....	30-30-30
Vice-President .....	25-25-25
Chairman of Standing Committee .....	15-15-15
Member of Standing Committee .....	10-10-10



## GENERAL ORGANIZATIONS

Secretary Chamber of Commerce .....	20-20-20
Receive points as follows:	
President .....	10-10-10
Secretary .....	10-10-10
Treasurer .....	5- 5- 5
Art Club	
Home Economics Club	
Scrollers	
Temenids	
Lyceum	
Ad Club	
President..	20-20-20
Manager...	15-15-15
Treasurer..	15-15-15
Member.....	10-10-10

## SOCIAL FUNCTIONS

### SENIOR FORMAL

Chairman of subcommittee .....	0-15-15
Member of subcommittee .....	0-10-10

### JUNIOR PROM

Chairman subcommittee .....	0-25- 0
Member of subcommittee .....	0-15- 0

### SOPHOMORE COTILLION

Chairman subcommittee .....	0-25- 0
Member of subcommittee .....	0-15- 0

### ROOK DANCE

Chairman of subcommittee .....	15- 0- 0
Member of subcommittee .....	10- 0- 0

## ATHLETICS

### WOMEN'S SPORTS

Basketball .....	0-25- 0
Baseball .....	0- 0-25
Tennis .....	0- 0-40
Swimming .....	0-25-25
Hockey .....	25- 0- 0

### WOMEN'S ATHLETIC ASSOCIATION

President .....	25-25-25
Vice-President .....	10-10-10
Secretary .....	15-15-15
Manager .....	10-10-10

### SPORTS MANAGER

Women's sports manager .....	30-30-30
------------------------------	----------

## HONOR SOCIETIES

President of honorary .....	20-20-20
Vice-President of honorary .....	10-10-10
Secretary .....	15-15-15
Treasurer .....	15-15-15
President of Inter-Honorary Council .....	15-15-15
Secretary-treasurer .....	10-10-10

## SOCIAL ORGANIZATIONS

### SORORITIES

President of sorority .....	30-30-30
Vice-president of sorority .....	10-10-10
Manager .....	25-25-25
Assistant manager .....	15-15-15
Treasurer .....	10-10-10
Secretary .....	15-15-15

### PAN-HELLENIC

President .....	35-35-35
Secretary .....	15-15-15

### CLUBS

President .....	30-30-30
Vice-president .....	10-10-10
Secretary .....	15-15-15
Treasurer .....	10-10-10
Councilman .....	15-15-15
Social chairman .....	15-15-15

### INTER-HALL COUNCIL

President .....	20-20-20
Secretary .....	10-10-10

### INDEPENDENT STUDENT COUNCIL

Secretary .....	25-25-25
Member .....	15-15-15
Secretaries .....	15-15-15

## MUSIC

### GLEE CLUB

Officer .....	30-30-30
Member .....	25-25-25

### MADRIGAL CLUB

Officer .....	30-30-30
Member .....	25-25-25

### ORCHESTRA

Officer .....	30-30-30
Member .....	25-25-25

## DRAMATICS

### NATIONAL COLLEGIATE PLAYERS

President .....	30-30-30
Secretary-treasurer .....	10-10-10
Lead in play .....	30-30-30
Minor part in play .....	15-15-15

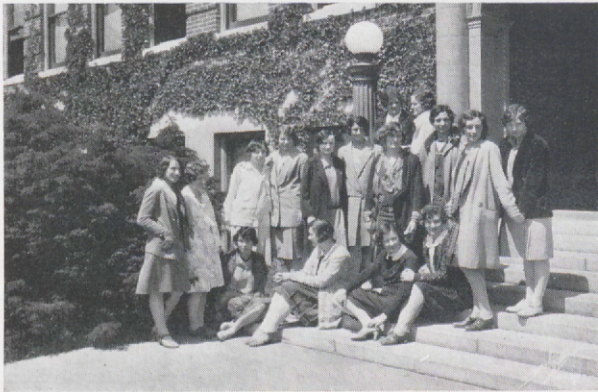
### FORENSICS

Women's varsity debate .....	30-30-30
Women's debate manager .....	35-35-35

## CAMPUS PUBLICATIONS

### BAROMETER EDITORIAL STAFF

Assistant Editor .....	35-35-25
Day Editors .....	35-35-35
Managing News Editor .....	45-45-45
Assistant day editors .....	25-25-25
Systems manager .....	15-15-15
Editorial writers .....	20-20-20
Humor editor .....	35-35-35
Secretaries .....	25-25-25
Minor staff members .....	20-20-20



#### BAROMETER MANAGERIAL STAFF

Assistants .....	20-20-20
Solicitor .....	10-10-10

#### BEAVER EDITORIAL STAFF

Associate editor .....	40-40-40
Department editor .....	40-40-40
Assistant editor .....	40-40-40
Art editor .....	30-30-30
Writer .....	20-20-20
Secretary .....	25-25-25

#### BEAVER BUSINESS STAFF

Assistant manager .....	50-50-50
Circulation manager .....	45-45-35
Advertising manager .....	45-45-35
Business staff .....	20-20-20

#### O. S. C. DIRECTORY EDITORIAL STAFF

Department head .....	30-30-30
Assistant department head .....	20-20-20

#### O. S. C. DIRECTORY BUSINESS STAFF

Management staff .....	20-20- 0
Advertising manager .....	25-25- 0
Circulation manager .....	20-20- 0
Business staff .....	15-15- 0
Collections .....	20-20- 0
Circulation staff .....	10-10-10

#### OREGON STATE MONTHLY EDITORIAL STAFF

Associate editor .....	10-10-10
Department editor .....	10-10-10
Assistant department editor .....	5- 5- 5

#### OREGON STATE MONTHLY BUSINESS STAFF

Staff salesmen .....	10-10-10
----------------------	----------



## Traditions

The women students of Oregon State live in halls of residence or sorority houses except those who work in private families or those living at home.

To live in large groups it is necessary to observe uniform standards, thus eliminating friction and interference with the personal life of others.

In order to overcome the difficulties which naturally arise, students of Oregon State believe that certain courtesies are due each other. For this reason attention is called to the following established traditions.

### Hours

#### A-1. Hours to be observed.

(a) Monday, Tuesday, Wednesday, Thursday—

Closing hour—10:00 p.m. (Women will leave the Library in time to reach home by this hour.)

Lights out—10:30 p.m.

(b) Friday, and vacations, except evening before classes—

Closing hour—11:30 p.m.

Lights out—12:00 p.m.

Friday afternoon—callers 4:00 to 6:00 p.m.

Saturday afternoon—open to callers.

Saturday evening, closing hour, 12:00 p.m.

(c) Sunday—

Calling hours—2:00 to 9:30 p.m.

Lights out—10:30 p.m.

#### **A-2. Preceding holidays.**

The hours on evenings immediately preceding college holidays are the same as on Friday and Saturday nights.

#### **A-3. Social functions.**

Social functions close—11:00 p.m., Fridays; 11:30 p.m., Saturday.

(With the exception of Junior Prom, Senior Ball, and Military Ball, which close at 12:00 p.m. if held on Friday or 11:45 p.m. if held on Saturday evening.)

#### **A-4. Upperclass privileges.**

Seniors and juniors may, with the permission of their housemothers, have one mid-week social engagement, but they will be in at the closing hour for week days.

#### **A-5. Freshman privileges.**

The week-end social engagements of freshman women are limited to one afternoon and two evening engagements.

#### **A-6. Telephone.**

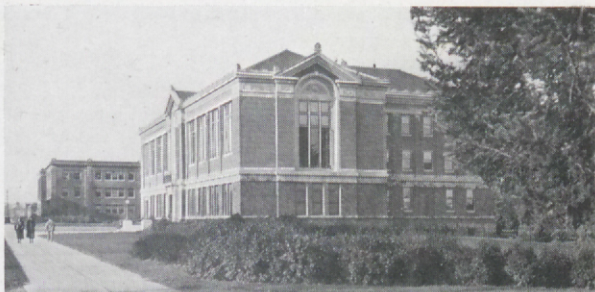
After 7:30 on study nights the housemother is responsible for the telephone, calling the women only in cases of emergency.

#### **A-7. Register.**

Women leaving the house after 6:00 p.m. will register with the housemother and check off with her the time of return.

#### **A-8. Absence from meals.**

It is courteous to inform the housemother before being absent from meals.



## SOCIAL

### B-1. Scheduling social events.

(a) Social events involving men and women, except class and student body events, are scheduled with the Student Interests Committee through the office of the Dean of Women.

Fall-term events are scheduled within two weeks following registration day.

Winter-term events are scheduled two weeks before the close of fall term.

Spring-term events are scheduled two weeks before the close of winter term.

Due notice of definite dates for scheduling events is given in the Daily Barometer.

(b) Informal parties and dinners in residence halls and sorority houses, and dinners in fraternity houses, are scheduled with the Dean of Women.

### B-2. Chaperons.

(a) After an event has been approved, chaperons are arranged for as follows:

Sunday dinner parties—one couple or faculty woman.

Dancing parties at sorority house—housemother.

Dancing parties in rented halls (either on the campus or in town)—three couples.

Picnics—two couples.

(b) Chaperon cards will be signed by chaperons in person.

(c) Students may not act as chaperons.

(d) The chaperon card must be filed in the office of the Dean of Women by *Wednesday noon* preceding the week-end in which the event is to be held so that it may be acted upon by the Social Life Committee, which meets every Wednesday.

### B-3. Approved events.

Women may attend only scheduled social events. Approved lists are sent each week-end to the house-mothers.

### B-4. Fraternity houses.

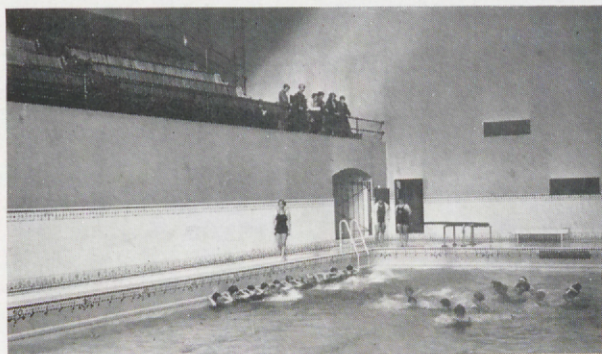
Women will not go to fraternity houses, except to attend scheduled social events.

## SPORTS

### C-1. Canoeing.

(a) A special swimming test is provided by the Physical Education department for those women who desire to participate in canoeing, after which a letter is written to the parents asking for their wish in the matter.

(b) The housemother will have a list of those who qualify.



## GOING OUT OF TOWN

### D-1. Permission to leave town.

A woman wishing to leave town:

1. Secures from the housemother cards with her signature.

2. Secures approval of the Dean of Women.

3. If the trip is not to her own home, the woman secures a letter of permission from home to show the housemother and to file in the office of the Dean of Women at the time the cards are signed.

4. Leaves one card in the office of the Dean of Women. Files the other with the housemother. (These are issued for each occasion.)

## CHANGE OF RESIDENCE

### E-1. Permission to change residence.

College women will not change residence without a written statement from the Dean of Women.

## INITIATION

### F-1. Sororities.

Sorority initiations are scheduled in the office of the Dean of Women.





## Women's Campus Organizations

**The Associated Women Students** is an organization of all the women registered at the College. It is a chapter of the National Federation of Associated Women Students which is represented by chapters in all large colleges and universities in the United States. The purpose of A. W. S. is to unify the work of all organized groups of women students.

**The Women's Council**, consisting of the secretary of the associated students, the president of A. W. S., the chairman of Spurs, the president of Greater Halls, president of Pan-Hellenic, vice-president of the senior class, vice-president of the junior class, and vice-president of the sophomore class, is a committee created to uphold the honor and traditions of Oregon State among all college women. It carries on activities which develop the spirit of fellowship and cooperation among women, and has the power to recommend penalties for the infringement of rules.

**Spurs** is a national organization of sophomore women. The local chapter seeks to foster the honor and traditions of Oregon State among incoming freshman girls.

**The Y. W. C. A.** purposes to aid in the Christian life of college women. Any woman student who wants help, or has help to give, can find room for both at "Y. W." headquarters. The Big Sister Committee under the auspices of the Y. W. C. A. is a group of older students organized to make the first college days of the freshman girl a little less trying.

**The Home Economics Club** is composed of the entire registration of the School of Home Economics. This club is one of the most active on the campus. Every student in Home Economics owes it her allegiance.

**The Physical Education Club**, to which any girl interested in sports is eligible, sponsors women's athletics on the campus. Winners of 50 points, given for achievement in athletics, are eligible for membership in the Women's Athletic Association.

**The Women's Athletic Association** sponsors women's athletic contests. It is very active on the campus and works in close harmony with similar associations in other colleges. Its members are chosen for achievement in athletics and outstanding character.

**Wytomachee** is a social organization for unaffiliated town girls. It is very successful in uniting the women who live in their own or private homes while attending college. This group has been accepted by Phrateres, a chapter of which will be installed the fall term.

**The Big Sister committee**, sponsored by Y. W. C. A., is an organized group of students interested in helping the freshman girl find and fill her place on the campus.

By her friendship the Big Sister helps the Little Sister in her adjustment to the campus, school work, activities, and social life.

## Honor Societies

**Senior Honors** are conferred by the College at graduation time upon those students who have maintained the highest scholastic standing in their respective schools. In addition, the various honor societies recognize distinction in scholarship and qualities of character and leadership.

**Phi Kappa Phi**, national scholastic honorary, is the final prize for achievement at Oregon State. Both men and women are elected. Members are chosen on the basis of outstanding scholastic attainment, campus activity, and strength of character.

**Cap and Gown**, local honorary for senior women, seeks as an organization to further a wholesome spirit of friendliness among Oregon State women. Girls chosen as members must have been leaders and helpful friends throughout their college lives.

**Parthenia**, honorary in Physical Education, chooses members from among women athletes on a basis of grace, skill, and strength, and of desirable character attributes.

**Rho Chi** is a national honorary in Pharmacy for both men and women. Women members are indeed outstanding pharmacists.



**Delta Sigma Rho**, national honorary in forensics, also elects both men and women. Only especially successful varsity debaters or orators become members.

**National Collegiate Players**, honorary in dramatics, chooses underclassmen as well as upperclassmen. Requisites are character and real dramatic ability.

**Phi Chi Theta**, national honorary in Commerce, chooses members on a basis of scholarship and leadership.

**Omicron Nu** is the national honorary in Home Economics. To be recognized as a leader and woman of character in as noble a profession as that of home economics is a much coveted honor.

**Theta Sigma Phi**, national honorary in journalism, chooses college women for membership who have achieved success in campus publication work, as newspaper correspondents, or as free-lance writers.

**Euterpe**, local honorary in music, chooses girls who combine hard work and interest with true musical ability.

**Kappa Delta Pi**, national honorary in education for men and women, in selecting members, considers scholarship and the attributes that will make a successful teacher. The girl who plans to teach considers election a recognition of characteristics she really desires.

**Kappa Kappa Alpha.** Election to this honor society is from among both men and women showing interest and ability in Art on a basis of scholarship, character, and leadership.

**Chi Alpha Chi,** is a local honorary society for women interested in the field of professional Advertising. The society through both campus and national activities sponsors interest in advertising. Members are selected on the basis of scholarship, leadership, and interest in advertising.

**Mu Beta Beta.** Members of this local honor society are elected on the basis of scholarship, character, previous 4-H Club training, and leadership.

# CONSTITUTION

## of the Associated Women Students

### ARTICLE I

#### *Name*

The name of this organization shall be "The Associated Women Students of Oregon State Agricultural College."

### ARTICLE II

#### *Object*

The object of this organization shall be to further the educational, social, and cultural aims of the women of this College.

a. To make possible the representation of all women, either directly or indirectly, in the organization.

b. To create a spirit of cooperation among the women as a whole and of those activities, organized or not organized, in which women participate.

c. To further the cooperation of women's activities with the purpose of the administration.

d. To maintain a general loan fund for women.

e. To create a spirit of cooperation among the women students with the Associated Women Students of Oregon State Agricultural College.

### ARTICLE III

#### *Membership*

SECTION 1. All the women of the College shall automatically become members of this organization upon matriculation at the College.

SEC. 2. All alumnae and women who are members of the faculty shall be honorary members of the organization.

### ARTICLE IV

#### *Administration*

SECTION 1. The officers of this organization shall be a president, vice-president, secretary, treasurer, and sergeant-at-arms.

SEC. 2. The governing body shall be the legislative council to consist of the following representatives: president of Associated Women Students, president of the Greater Halls, president of the Women's Athletic Association, president of the Y. W. C. A., president of the Pan-Hellenic, president of the Down Town Girls' club, secretary of the Associated Women Students, chairman of Spurs, and one representative each from the Barometer, the Honor Committee, the point system, and the Home Economics club.

Duties of the Legislative Council:

a. This body shall be the means for greater representation of all women.

b. It shall be responsible, as a medium for advertising, to place before all representative activities any undertaking of interest to the women of the College.

c. It shall be democratic and shall further the spirit of democracy among women.

d. The powers of the individual organizations shall remain individual, and shall not be interfered with by this body.

e. This council, or any representative of it, if desirous of presenting a report, petition, grievance, criticism, or any business matter, may present a written statement of the business to the secretary before the meeting.

f. It shall prevent duplication of work and meetings to the best of its ability.

g. It shall keep the interests of all women in mind always, making life at Oregon State bigger and better, and dividing the responsibility of the organization among all women.

h. The legislative council shall consider and discuss all questions appertaining to the objects and problems of the Associated Women Students, and all things concerning the women students or their problems in the College, these matters to be referred to the general body.

i. The legislative council shall also allow all bills and expenditures and suggest the character of entertainments.

j. The legislative council shall select the manager of the annual women's stunt show at the end of fall term.

#### SEC. 3. Requirements for office:

a. The president shall be chosen from the senior class and the vice-president from the junior class.

b. The secretary shall be chosen from the sophomore class.

c. The treasurer shall be chosen from the junior class.

d. The sergeant-at-arms shall be chosen from the junior class.

SEC. 4. Special elections shall be held for vacancies made by officers.

### ARTICLE V

#### *Duties of the Officers: The President*

a. She shall preside at all assemblies of the Associated Women Students and at the meetings of the legislative council.

b. She may act as ex-officio member of all committees.

c. She shall devote her time to studying the problems of women and shall advise and construct plans for betterment of conditions.

d. She shall work in close cooperation with the vice-president, checking on her work.

e. She shall represent the women at the state or the interstate conference of college or state women when it is possible for her to do so.

f. She shall have the power to call special meetings.

g. She shall invite to the campus women speakers of national or state importance as authorized by the legislative council.

#### *The Vice-president*

a. She shall preside in the absence of the president.

b. She shall work in close cooperation with the president.

c. She shall attend the state or interstate conference for college or state women when it is impossible for the president to do so.

### *The Secretary*

- a. The secretary shall call the roll and read the minutes of the legislative council. At business assemblies she shall read the minutes of the last business assembly of women.
- b. She shall manage the secretarial correspondence and keep the files and important papers for the association.
- c. She shall call all members to their respective meetings.
- d. She may appoint an assistant secretary to assist her.
- e. She shall keep a scrap book as an illustrated example of the year's events, which shall be filed in the office of the Dean of Women.

### *The Treasurer*

- a. The treasurer shall manage the finances of the association.
- b. She shall make out the yearly budget for the association.
- c. She shall have her books audited at the close of her term of office.
- d. She shall attend to the collection of dues.
- e. She shall make an annual report of the year's finances.

### *The Sergeant-at-arms*

- a. She shall make all arrangements for meeting room and seating.
- b. She shall keep order.

## ARTICLE VI

### *Meetings*

The meetings for the association shall be held as assemblies for all women, and shall be held at least once a term. Meetings shall be called only when the most interesting things can be presented to the women (speakers, artists, etc.). Meetings shall be considered regular when approved by the officers of the association.

## ARTICLE VII

### *Elections*

- a. Nominations of officers shall take place at the last meeting of the second term.
- b. The executive board shall appoint the nomination committee of five members, two of whom shall be from the executive board and three from outside that body. Two of the five shall be from the halls, two from the sororities, and one from the Down Town Girls' club.
- c. Elections shall take place on registration day of spring term, the time and place to be determined by the officers of the Association.
- d. Installation shall take place at the next regular meeting.

## ARTICLE VIII

### *Amendments*

Amendments to this constitution shall be proposed in writing at a regular meeting and shall be voted on at the next regular meeting. Two-thirds of all votes shall be required for adoption. Voting shall be by secret ballot.

## ARTICLE IX

### *Loan Fund*

A permanent loan fund shall be maintained to be lent by the Associated Women Students with the approval of the Dean of Women and the president.

## By-laws

1. A quorum shall consist of fifty members.
2. A majority vote shall be required to carry all measures.
3. These by-laws may be amended by a two-thirds vote of the members present at a regular meeting.
4. The meetings of the Associated Women Students shall be governed by "Robert's Rules of Order."
5. The following oath of office shall be used: "I do hereby solemnly promise, in the presence of these witnesses, to execute faithfully the requirements of this constitution, to uphold and maintain the dignity of the office to which I have been elected, and to perform to the best of my ability all the duties that devolve upon such an office."
6. If at any time it is deemed advisable to secure cooperation of men students, it shall be in the power of the chairman of the acting committee with the legislative council to make the necessary temporary appointments.





# College in Outline

## Degree granting schools and departments—

- The School of Agriculture
- The Department of Chemical Engineering
- The School of Commerce
- The School of Engineering and Mechanic Arts
- The School of Forestry
- The School of Home Economics
- The Department of Military Science and Tactics
- The School of Mines
- The School of Pharmacy
- The School of Vocational Education

## Service Schools and Departments—

- The School of Basic Arts and Sciences
- The School of Health and Physical Education
- The Department of Industrial Journalism
- The Department of Music
- The Library

## Research and Experimentation—

- The Agricultural Experiment Station
- The Engineering Experiment Station
- Graduate Study and Research

## The Extension Service—

- Adult Extension
- Junior Extension (4-H Club projects)

For catalogue and other information about the  
College address

THE REGISTRAR

**Oregon State Agricultural College**  
Corvallis, Oregon









ORE. STATE  
UNIVERSITY  
ARCHIVES