



1922-1923

Oregon Agricultural College

STUDENT HAND BOOK

1922-1923



Published by

The Young Men's Christian Association

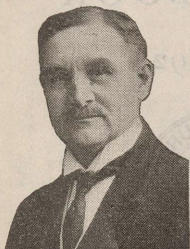
and

The Young Women's Christian Association

HOMER L. ROBERTS

Editor and Manager

A Welcome From Your President



PRESIDENT KERR

WITH an ardent desire that you may find your life at the College both the incentive to purposeful study and the congenial companionships that make for refinement of character, I welcome you to all the opportunities that the institution affords — to its stimulating resources

for mastering the industries and professions of life, to its liberal facilities for self-discipline and self-government, and to its opportunities for Christian service.

May you be to the institution, both during your stay here and thereafter, a source of congratulation; and to the State that provides you with these advantages, an unfailing source of efficiency, integrity, and truth.

WILLIAM JASPER KERR.

Line Up With the "Y"

NOW that you're here, all set for a big year in college, incline your ear gently this way, while we whisper a few suggestions:

The Y. M. C. A. and the Y. W. C. A. of this college are organizations for your own benefit. They stand by the side of the home and the church in the encouragement of an intelligent and strong faith.

Line up with them at once, and you will have taken the first step towards closer fellowship with the students of O. A. C.

The "Y" stands first, last, and all the time on the principle that a man or woman can find the greatest service only when he regulates his life by a high standard of moral and religious conduct.

Aggie men have long been known as fighters — as clean, honest fighters. They carry the old Beaver spirit of fairness and service to the class room, laboratory, and athletic field.

Don't forget that the "Y" is a vital part of your education.

What is a college education good for? To lengthen the period of youth, says C. F. Thwing. It is good to prolong the time of preparation for life; it is good to take away self-conceit; it is good to give openness of mind and heart; it is good to fix high standards of character; it is good to foster an intelligent and vigorous Christian faith.

COLLEGE CALENDAR

1922

- September 18, 19, Monday, Tuesday.....
Registration
 September 20, Wednesday.....Recitations
 begin; required English examination.
 October 6, Friday.....
Meeting of Board of Regents
 November 11, Saturday.....
Armistice Day; holiday
 November 30, December 1, 2, Thursday,
 Friday, Saturday....Thanksgiving recess
 December 16, Saturday.....
 First term ends; Christmas recess begins

1923

- January 2, 3, Tuesday, Wednesday,.....
Second term registration
 January 3, Wednesday.....
Meeting of Board of Regents
 January 4, Thursday....Recitations begin
 February 22, Thursday.....
Washington's birthday; holiday
 March 17, Saturday.....Second
 term ends; spring vacation begins.
 March 26, 27, Monday, Tuesday.....
Third term registration
 March 28, Wednesday....Recitations begin
 April 4, Wednesday.....
Meeting of Board of Regents
 May —,Military Inspection Day
 May 30, Wednesday.....
Decoration Day; holiday
 June 2, Saturday.....
Senior Class Day, Alumni Reunion
 June 3, Sunday....Baccalaureate Sermon
 June 4, Monday.....
Fifty-fourth Annual Commencement
 June 9, Saturday.....Third Term Ends
 June 18, Monday....Summer Session begins
 July 4, Wednesday.....
Independence Day; holiday
 July 28, Saturday....Summer Session ends

TRADITIONS OF THE COLLEGE

As much a part of O. A. C. as its buildings and its trees and flowers are its traditions. Every Aggie should know them. They have grown out of the history and ideals of the college, and form a tangible part of what is known as "Beaver spirit."

They exist to inspire the new student and to foster the spirit of loyalty in the old. Here are some of the traditions for which the college is known:

Conduct

Pride in the campus has made it a tradition that there shall be no crossing lawns nor smoking on the campus.

Every Beaver is expected out to all athletic events, but there shall be no "fussing"—that is, he shall not accompany a young lady to the games.

Rooks must wear their green hats at all times, and rookesses their green ribbons on the scheduled days.

After athletic games, freshmen always stay until the event is finished.

All students remove their hats in buildings.

Traditional College Events

Agricultural Fair under the supervision of the school of agriculture.

Engineering Show, an exhibition of the latest scientific methods used in the work of the engineer.

Homecoming Week End, fall of each year when alumni are especially urged to return for a visit to their Alma Mater.

Annual Inspection Day, when the R. O. T. C. is reviewed by military and civil authorities.

Junior Week End, in the spring of the year when high school students are entertained by the college under the supervision of the junior class.

Class Traditions

A gift to the College by each graduating class.

The senior excursion to Newport.

The senior ball.

The junior prom.

Sophomore cotillion.

The sophomore-freshman bag rush and tug of war.

Burning of the green cap and the green ribbon.

The Beaver, published by the junior class.

Junior vaudeville.

Burying of class scroll by each graduating class.

Senior convocation.

Table at A's & K's.

Senior bench.

Trysting tree.

Senior hat.

Junior cords.

Sophomore sweater.

CORVALLIS CHURCHES

Baptist—Ninth and Monroe; Dr. Bryant, pastor.

Christian—Sixth and Madison; Clarence W. Reynolds, pastor.

Catholic—Fourth and Adams; Francis P. Leipsic, pastor.

Congregational—Eighth and Madison.

Christian Scientist—323 South Fourteenth.

Episcopal—Seventh and Jefferson; E. T. Simpson, rector.

Methodist—Fourth and Madison; Irven Brackett Wood, pastor.

Presbyterian—Eighth and Monroe; Monroe G. Everett, pastor.

Evangelical—1055 Monroe; A. P. Layton, pastor.

South Methodist—Fifth and Madison, Edward J. Harper, pastor.

Lutheran—Sixteenth and Monroe; Ernest J. A. Probst, pastor.

AGGIE SONGS

"Carry Me Back to O. A. C." is the song which we always rise to sing. To the old grad it brings back happy memories of his pleasant years at the "college on the hill." And to the undergraduate, it brings pride in his college, love of its traditions and its ideals.

Alma Mater

Within a vale of western mountains,
There's a College we hold dear.
Her shady slopes and fountains
Oft to me appear.

I love to wander 'long the pathway
Down to the trysting tree,
For there again I see in fancy,
Old friends dear to me.

CHORUS—

Carry me back to O. A. C.
Back to her vine-clad halls;
Thus fondly ever in my mem'ry
Alma Mater calls.

It is a worthy land-grant college,
By the noble Lincoln planned.
Her sons' and daughters' knowledge
Tills and guards the land.
So honored be her name forever;
Sing praise to O. A. C.
Ah, naught in all the world can sever
Friends once dear to thee.

Fight On, Old O. A. C.

Fight on, old O. A. C.,
Our hearts are all with thee,
You'll bring us victory.
Let our watchword always be,
"The pep that others lack
Is found in the Orange and Black."
So sing out your song of joy;
Fight on, boys; fight on, boys,
For Old O. A. C.

O. A. C. Medley

Who am I, sir? An O. A. C. man am I;
 An O. A. C. man, sir, and will be till I
 die, ki yi;
 We're up to snuff, we never bluff, we're in
 for any fuss—
 There isn't a bunch of college men can
 beat us in a muss.
 So we'll fill our lungs with lusty air and
 shout into the sky,
 We'll fight for dear old O. A. C.
 For an O. A. C. man am I.

O. A. C., O. A. C., zip-boom, zip-boom,
 zip-boom-bee,
 O. A., O. A., O. A. C.
 O. A. C., O. A. C.
 Smash 'em, bust 'em,
 That's our custom;
 O. A. C.

For I'm a Beaver born and a Beaver bred
 And when I die I'll be a Beaver dead.
 For it's Rah, Rah, for O. A. C.
 Rah, Rah, for O. A. C.
 Rah, Rah, for O. A. C.

Here's to the men we know and love,
 Beavers tried and true;
 Here's to the men of the Orange line
 Wiping the ground with you.
 Up with the glass and pledge them, lads,
 Flashing its amber gleam,
 While deep in our hearts the toast shall
 be:
 Here's to Old O. A. C.

What Do You Think of Our Team?

O. A. C., O. A. C., fighting all the while;
 Beaver born and Beaver bred;
 And see that Beaver smile!
 Beaver hopes are beating high,
 And hearts are filled with glee.
 Beaver warriors fighting mad
 And a Beaver victory. So—

CHORUS—

What do you think of our team, boys?
What do think of our team?
Eleven husky fighting men
Chuck full of pep and steam;
We're right behind them all the time
To smash the Lemon and Green.
So, Oh boy! Oh joy!
What do you think of our team?

Hail to Old O. A. C.

Here we come with a toast and song
To the College upon the hill.
We love its shady slopes and trees,
Each memory cheers and thrills.
But the fondest thoughts when the years
have run
Will be of teams and victories won;
Each man a loyal son,
Hail to Old O. A. C.

CHORUS—

O. A. C., our hats are off to you.
Beavers, Beavers, fighters through and
through.
We'll cheer for every man;
We'll root for every stand
That's made for old O. A. C.
Rah, Rah, Rah,
Watch our team go tearing down the field
Men of iron their strength will never yield
Hail, hail, hail, hail.
Hail to old O. A. C.

We'll root hard for the baseball fan
Who can knock out a long home run,
Or cheer the man who kicks the goal
That means the game is won.
But memories best in the hall of fame
Will be for those who are always game.
Win, lose, fights just the same.
All for old O. A. C.

Smear Oregon

O stands for Oregon

S stands for State

A stands for Aggie men, who never hesitate

C stands for college the college on the hill

And we stand for O. A. C.

SMEAR OREGON — WE WILL!

AGGIE YELLS

Zip-Boom-Bee

Zip-Boom-Bee,

Zip-Boom-Bee,

O. A., O. A., O. A. C.,

(Three times.)

Bull Dog

Br-r-r-r Ah!

Br-r-r-r Ah!

O. A. C.

Rah, Rah, Rah, Rah,

Br-r-r-r Ah!

Beavers!

Zipara-Zipari-Ziparee

Zipara-Zipari-Ziparee

Beavers, Beavers, O. A. C.

(Three times.)

Boom Rah

Boom-Rah, Boom-Rah,

Rah - - - - -

Chant

B—E—A—V—E—R—S

Rah, Rah, Rah, Rah, O. A. C.

Rah, Rah, Rah, Rah, O. A. C.

Rah, Rah, Rah, Rah, O. A. C.

Hoo-o-o Rah-h-h-h, Beavers.

O. A. C. Rah, Rah

O. A. C., Rah, Rah,

O. A. C., Rah, Rah,

Hoo-Rah, Hoo-Rah,

Beavers, Beavers, Rah, Rah.

Siren

Sis-s-s-s-s-s (whistle) Boom.

Skyrocket

Sis-s-s-s, Boom, Ah - - - - -

Beavers

B-B-E-A-V

V-V-E-R-S

B-E-A-V-E-R-S

Rah, Rah, Rah, Beavers.

Hail Beavers

Hail Beavers, Hail Beavers,

Rah, Rah,

B-E-A-V-E-R-S

Rah, Rah, Rah, Beavers.

Locomotive

Rah, Rah, Rah,

B-E-A-V-E-R-S

Rah, Rah, Rah, Beavers.

Say What?

Say?

What?

That's what.

What's what?

That's what they all say.

What do they all say?

Beavers.

The Library Is to Study

The library is used to study and to borrow books from. In the past, misguided ones have used it as a meeting ground,—a habit which is frowned upon by not only good custom but by authorities.

Class Meetings Important

Your class expects you to attend its meetings, and to take an interest in its activities. Show your willingness to take on a part of any undertaking by your class.

FRATERNITIES, SORORITIES, AND CLUBS

Sororities

Alpha Chi Omega.....	8 Park Terrace	2593
Alpha Gamma Delta.....	128 S. 9th	1545
Alpha Rho.....	205 N. 11th	1522
Alpha Xi Delta.....	405 S. 15th	1667
Beta Alpha.....	342 S. 8th	1668
Chi Omega.....	659 Adams	1610
Delta Delta Delta.....	16th and B	1595
Delta Omega.....	602 N. 9th	1748
Delta Zeta.....	3 Park Terrace	2310
Gamma Iota.....	530 N. 11th	1449
Gamma Phi Beta.....	8th and Jefferson	1609
Kappa Alpha Theta.....	242 N. 7th	1115
Lamedh Vau.....	622 S. 17th	1749
Pi Beta Phi.....	206 N. 5th	2575
Sigma Kappa.....	45 Park Terrace	1611
Xi Beta.....	2735 Jackson	1643
Cauthorn Hall.....		3137
Margaret Snell Hall.....		1651
Waldo Hall.....		1421

Fraternities

Alpha Pi Delta.....	23rd and Jackson	1602
Alpha Sigma Delta.....	1759 A	1291
Alpha Sigma Phi.....	957 Jefferson	1309
Alpha Tau Omega.....	211 N. 23rd	2480
Chi Alpha Pi.....	1409 Monroe	3746
Delta Kappa.....	58 N. 26th	1156
Delta Upsilon.....	31 N. 26th	1477
Gamma Nu.....	854 Jefferson	2147
Gamma Sigma Kappa.....	1365 Adams	1642
Kappa Delta Sigma.....	408 N. 8th	2207
Kappa Psi.....	202 N. 15th	1656
Kappa Sigma.....	8th and Van Buren	2420
Kappa Theta Rho.....	330 N. 9th	1549
Lambda Chi Alpha.....	25th & Monroe	1502
Omega Upsilon.....	227 N. 11th	2548
Phi Delta Theta.....	610 Jefferson	1446
Phi Gamma Delta.....	660 Madison	1514
Phi Sigma Kappa.....	27 Park Terrace	1544

Pi Kappa Alpha.....	202 N. 10th	1283
Sigma Alpha Epsilon		
.....	29th nad Harrison	1697
Sigma Chi	23rd and Campus	2570
Sigma Gamma.....	624 N. 9th	1655
Sigma Nu.....	119 N. 9th	2368
Sigma Phi Epsilon		
.....	Shepard Way and Campus	1665
Tau Delta.....	812 S. 11th	1216
Theta Chi.....	2332 Monroe	1722
Theta Delta Nu.....	336 N. 10th	1104
Theta Nu Phi.....	1166 Jefferson	2296

Clubs

Ares.....	36 Shepard Way	1569
Deschutes.....	2039 Monroe	1711
Del Rey.....	21 S. 23rd	1597
Delphi	436 S. 5th	1747
Square and Compass.....	202 N. 10th	1680
Rainier.....	15th and Van Buren	1343

TECHNICAL CLUBS

Agricultural Club, Fred Osburn, president	
American Association of Engineers	
..... C. R. Low, president	
American Association of Mechanical	
Engineers.... W. J. McPherson, president	
Chemical Engineering Society	
..... Clifford Duncan, president	
Chamber of Commerce	
..... E. L. Kimball, president	
Dairy Club..... K. C. Poole, president	
Home Economics Club	
..... Zella Steele, president	
Horticultural Club	
..... Wilbur Pentzer, president	
Miners' Club..... John H. Quiner, president	
Pharmaceutical Association	
..... Arthur A. Borgeson, president	
Soils Improvement Club	
..... Jack Nichols, president	
Physical Education Club	
..... Ruth Ferguson, president	
Poultry Club..... H. H. Young, president	

THE COLLEGE

The resident instruction is but a part of the college's work. The other two divisions include the experiment station and the extension service.

Schools and Administration

President of the College	William Jasper Kerr
Agriculture	Dean A. B. Cordley
Basic Arts and Sciences	Dean M. Ellwood Smith
Engineering	Dean G. A. Covell
Commerce	Dean G. A. Bexell
Home Economics	*Dean Ava B. Milam
Pharmacy	Dean Adolph Ziefle
Forestry	Dean G. W. Peavy
Mines	Dean E. E. Newton
Vocational Education,	Dean E. D. Ressler
Music	Prof. W. F. Gaskins
Department of Military Science	Colonel G. W. Moses
Department of Chemical Engineering....	

*On leave of absence in China.

Board of Regents

The general government of the college is vested primarily in the board of regents, and, under their control, in four other administrative bodies: The administrative council, the college council, the faculty, and the staffs of the experiment station and extension service. The administrative council determines questions of policy and administration; the college council considers all matters pertaining to educational work, including courses, requirements for admission and graduation; the college faculty considers questions of method and discipline.

Officers: Hon. J. K. Weatherford, president, Albany; Hon. N. R. Moore, secretary, Corvallis; Hon. C. L. Hawley, treasurer, McCoy.

Ex-Officio Members: Hon. Ben W. Olcott, governor, Salem; Hon. Sam A. Kozler, secretary of state, Salem; Hon. J. A. Churchill, superintendent of public instruction, Salem; Hon. Charles E. Spence, master of state grange, Oregon City.

Appointed by the Governor: Hon. Walter M. Pierce, La Grande; Hon. Harry Bailey, Lakeview; Hon. Geo. M. Cornwall, Portland; Hon. B. F. Irvine, Portland; Hon. N. R. Moore, Corvallis; Hon. Jefferson Myers, Portland; Hon. J. K. Weatherford, Albany; Hon. C. L. Hawley, McCoy; Hon. M. S. Woodcock, Corvallis.

Alumni Association

The necessity for a strong alumni association was evidenced in the Spring of 1920 during the millage tax campaign. It was found that the existing organization of graduates had not grown in proportion to the College, and steps were taken to perfect it. Plans were worked out whereby a permanent secretary might head the work, branch organizations were formed in all sections of the state, and the interest of the incoming graduates was enlisted. That efficient cooperation was secured is well proved by the effective way in which the Alumni responded in the successful passage of the millage bill.

Success in any line cannot be gained without financial support. Every graduate is given the opportunity to become a part of the organization in one of three ways: By paid up life membership, life membership to be paid by installments, or by payment of yearly dues. In return is given the right of active participation in the organization, a subscription to "The Alumnus," published quarterly, and admission to the Alumni luncheon and dance held each year during Commencement Week on the campus.

The Alumni Association is the medium by which O. A. C. men and women may keep in touch with their Alma Mater.

Women's Athletic Association

Officers—Eline Anderson, president; Bertha Shumacker, secretary; Ruth Mills, hiking manager; Marie Tonseth, manager.

The Women's Athletic Association was formed in the spring of 1916, the membership including all the women in college. The interests of the Association are very wide and include all sports: Baseball, hockey, tennis, swimming, basketball volleyball, archery, soccer, and fencing. The purpose of the organization is to encourage participation in the several sports, and this purpose is promoted by inter-class contests. The Association has a place for all women on the campus, and here a spirit of good fellowship and fair play is developed among the women students.

The Varsity "O" Association

This association, which succeeds the Orange "O" club, includes all men of the College who have been officially awarded the Orange "O" in recognition of service on the intercollegiate athletic teams of the College. The function of the Varsity "O" Association is to promote the athletic ideals of the College and to serve in an advisory capacity to the Athletic Board of Control.

A Loan If You Need It

Don't quit college because of financial reasons until you have tried for a student loan. They are available for every worthy student as long as the money holds out.

See the "Y" for a Job

The "Y" employment service is glad to list your name for work in the college or city of Corvallis. Most of O. A. C.'s students earn part or all of their way through college.

The Student Assembly

This is an organization of the entire student body working under a constitution and by-laws approved by the faculty and having general authority over all student body enterprises. Officers are elected annually, nominations and elections being conducted in a manner similar to that of the state electorate. The officers consist of a president and secretary chosen from the senior class, and three vice-presidents, chosen one each from senior, junior, and sophomore classes. These five officers, as a whole, constitute the executive committee of the student body and have general supervision of all affairs of interest to the student body.

Student Body Officers

Student Assembly: John Alexander, president; Bernhardt Wagner, first vice-president; Florence Gradon, second vice-president; Duncan Shields, third vice-president; Mary Bayne, secretary; Lyman Cooley, yell leader; Homer L. Roberts, editor of the Daily Barometer.

Greater O. A. C. Committee: Wayne Davis, chairman; Ralph Westering, Irva Knuppenberg.

The Board of Control

The Board of Control consists of three faculty members appointed by the President of the College, one alumnus chosen by the Alumni Association, and five students who are the executive committee of the student body. The student body constitution vests in this Board of Control authority to supervise all student body interests entailing the expenditure of student body funds. They exercise functions in the main by the approval of budgets and schedules. The immediate supervis-

ion is exercised through a general manager appointed by the Board of Control.

Members for this year are: Dr. U. G. Dubach, chairman; Charles Johnson, Wallace Kadderly, Jay Reynolds, John Alexander, B. Wagner, Florence Gradon, Duncan Shields, Mary Bayne, secretary.

Young Men's Christian Association

The Y. M. C. A. was organized at the Oregon Agricultural College in 1890. The "Y" Hut is the center of the Association's activities. The writing rooms, committee rooms, auditorium, and stage are at the service of students for social, religious, and other activities. The Hut is also the headquarters for the men's employment bureau. The Association is firmly established as a strong inspirational influence in the life of the college.

Officers: E. W. Warrington, general secretary; Fred Humphrey, president; Kenneth Poole, vice-president; John Bixby, secretary; John Pubols, treasurer.

Young Women's Christian Association

The Y. W. C. A. aims to cooperate with all the forces of the College in promoting among the women students a well-developed life. The headquarters of the organization are at Shepard Hall where students are welcome at all times. The general secretary, Miss Gladys Taylor, has charge of the employment bureau for women, and is anxious to be of service to any who needs her and the girls will all find her friendship of value. The Association has as its purpose the development of spiritual life on the campus and greater cooperation among the women.

Officers: Miss Gladys Taylor, general secretary; Edna Readon, president; Annette Weatherford, vice-president; Ruth Morland, secretary; Hazel Ball, treasurer.

Make the "Y" Your Headquarters

If you can visit the "Y" every day, it will be worth your time. It is the rallying point for young people of the institution. The sooner you become active in the "Y" work the sooner do you increase your circle of friends and boosters.

The Student Council

Student rules and regulations are enforced by the Student Council, an organization of ten students, five of whom shall be seniors, three juniors, and two sophomores. The three class presidents, the president, and first vice-president of the Student Assembly, and the editor of the Daily Barometer shall become members of the Council by virtue of their respective offices. One senior, two juniors, and one sophomore shall be elected by their respective classes at their regular class elections.

Members for the year 1920-21 are as follows: John Alexander, president student assembly; B. Wagner, vice-president student assembly; Homer L. Roberts, editor Barometer; Grant Hylander, senior; M. Hollinger, senior; R. G. Johnson, junior; Everett Miller, junior; Robert Hadley, junior; Charles Christianson, sophomore; Ray Alexander, sophomore.

The Student Affairs Committee

The Student Affairs Committee, composed of members of the faculty and students, appointed each year by the President, is designed to look after those interests of the students which are not strictly academic in character. It assists in working out student social problems. It helps to maintain a wholesome relationship between clubs and fraternities and the College. It is prepared to assist student or-

ganizations in all their financial dealings. In short, the committee strives to bring about those conditions which will make the student's college life of the greatest profit to him.

Members of the committee for 1920-21 are: Faculty, George W. Peavy chairman; W. J. Gilmore, N. H. Comish, E. B. Beaty. Students: John Alexander, Allen Brown, Betty Nusbaum, B. Wagner, Edna Readon, E. Caldwell.

Women's League

Frances Benson, president

Membership is composed of all girls registered in college. The League was organized in order to bring about a larger spirit of unity among the women on the campus and to promote the spirit of democracy.

The Citation Committee

Pauline Thompson, chairman

The purpose of this organization is to further the general college spirit among the women of the freshman class. Membership is composed of one sophomore from each women's fraternal organization on the campus.

Lyceum Club

John Bedynek, president

Membership is composed of students trained in music reading and lecturing. From these, groups are selected and sent to outside communities where they present regular lyceum programs.

Lincolnian Literary Society

Almon L. Weist, prseident

This society has for its purpose improvement in elocution, debate, oratory, expression, and parliamentary usage. Membership is limited.

MUSICAL ORGANIZATIONS

Chorus

A mixed chorus of about 250 voices has been organized for the first term. The personnel of the glee club, men's musical organization, and the madrigal club, women's musical organization similar to the glee club, will be picked from the chorus some time in January. The chorus is under the leadership of Professor W. F. Gaskins.

College Orchestra

Lloyd Perkins, president

Includes men and women, directed by Professor Carl Grissen.

O. A. C. Band

Donald Bogie, president

The Cadet Regiment band, directed by Captain H. L. Beard.

Mandolin Club

Raymond Marsh, president

Membership includes men and women.

Publications Need You

A short cut to a position on any college publication is a course in industrial journalism. Don't wait for someone to ask you to try out for the staff of a publication; volunteer your services.

Use a Daily Program

Make out a program each day of the work you plan to do. Then stick to it. Have a regular hour for arising, and avoid studying until late hours.

HONOR SOCIETIES

Various societies having as their chief purpose the promotion and recognition of scholarship elect annually from among the student body limited numbers of those who have shown superior scholastic attainment, qualities of leadership, and personal character. The fact that most of these societies are national in scope, with chapters in the leading colleges and universities and with uniformly high standards for membership, makes election to one of the honor societies a distinction greatly prized. The following list includes the honor societies at present represented at the Oregon Agricultural College.

Alpha Kappa Psi—commerce—men.

Alpha Zeta—agriculture—men.

Beta Alpha Psi—accounting—men.

Chi Epsilon—chemical engineering—men.

Delta Psi Kappa—physical education—women.

Delta Sigma Rho—forensic—men.

Eta Kappa Nu—electrical engineering—men.

Euterpe—music—women.

Forum—general honorary—men and women.

Gamma Sigma Delta—agricultural—men.

Lambda Phi Lambda—engineering—men.

Omicron Nu—home economics—women.

Phi Theta Kappa—commerce—women.

Rho Chi—pharmacy—men and women.

Scabbard and Blade—military—men.

Scribe—local journalistic—women.

Sigma Delta Chi—journalistic—men.

Sigma Tau—engineering—men.

Xi Sigma Psi—forestry—men.

Zeta Kappa Psi—forensic—women.

WOMEN'S REGULATIONS

The regulations for women students were compiled by the women's league and approved by President Kerr. The regulations apply to all college women. Those who reside at home are asked to conform with them as far as possible. The entire list of rules are contained in a pamphlet which may be obtained at the office of the dean of women. A few of them which will be of general interest are as follows:

Hours

A-1. Hours to be observed.

(a) Monday, Tuesday, Wednesday, and Thursday—

Closing hours—10:00 p. m. (Women will leave the Library in time to reach home by this hour.)

Lights out—10:30 p. m.

Callers may occasionally be received from 4:00 to 5:30 at the housemother's discretion.

(b) Friday and Saturday—

Callers leave—11:00 p. m.

Closing hour—11:30 p. m.

Lights out—12:00 p. m.

Friday afternoon—callers 4:00 to 5:30.

Saturday afternoon—open to callers.

(c) Sunday—

Afternoon calling hours—2:00 to 5:00.

Evening callers leave—9:30.

Closing hour—9:30.

Lights out—10:30.

A-2. Morning Calls. Men who call in the morning do not stay longer than ten minutes. This applies to Sunday as well as other days.

A-3. **Preceding Holidays.** The hours on evenings immediately preceding College holidays are the same as on Friday and Saturday nights.

A-5. **Social Functions.** Social functions close 11:00 p. m. (With the exception of Junior Prom, Senior Reception, and Military Ball, which close at 12:00 p. m. if held on Friday and 11:45 p. m. if held on Saturday evening.)

A-9. **Telephone:** After 7:30 on study nights the housemother is responsible for the telephone, calling the women only in cases of emergency.

B-2. **Scheduling Social Events.** (a) Social events involving women, Sunday dinners, and open house are scheduled with the Dean of Women. (b) Social events involving men and women other than those indicated above are scheduled with the Student Affairs Committee through the office of the Dean of Women.

B-4. **Approved Events.** Women may attend only scheduled events. Approved lists will be sent each week-end to the housemothers.

B-5. **Fraternity Houses.** Women will not go to fraternity houses, except to attend scheduled social events. Women will not go above the first floor of a fraternity house, without special permission from the office of the Dean of Women, except to leave and get wraps at a party.

Sports

C-1. **Picnics.** (a) Picnics have a six-hour limit unless special permission has been secured from the Dean of Women, regardless of the number attending. The time is reckoned from the hour scheduled for leaving to the hour of return to the house. (b) Women who go hiking, canoeing, in automobiles, or on horseback will

return before dark, unless extension of time has been granted by the Dean of Women. (Permission for such trips is secured from the housemother, whose duty it is to see that they are properly chaperoned when chaperons are needed.)

C-2. Canoeing. Permission to go canoeing is granted only to women who have complied with swimming test regulations. (See C-2 in book of regulations.)

C-3. Mary's Peak. Permits to climb Mary's Peak are issued on each occasion. (See C-3 in book of regulations.)

For permission to go out of town see D-1 in book of regulations.

G-5. Serenaders. Women may applaud serenaders. The applause is simply to let them know that their courtesy is appreciated. Women should not appear at the windows or throw anything to the men or talk with them. Women will not encourage serenading after midnight as this is contrary to city regulations.

G-1. Sunday. (a) Women are encouraged to attend church; therefore, they will return from hikes, etc., in time to dress for church. (b) No scheduled events may be held on Sunday other than those covered by B-2 (a).

Meet Your Pastor

The pastor of your church is waiting for an opportunity to meet you. Hunt him up and cultivate his acquaintance.

Attend Convocation

Get the convocation and student body meeting habit. Everyone wants to know what the college is doing.

Know the College Rules

Get a copy of the rules and regulations governing student conduct. Learn and observe them.

CAMPUS ORGANIZATIONS

Mask and Dagger Dramatic Club

Quincy Corrie, president

The membership in the club is dependent upon dramatic ability. Tryouts are held twice a year, the judges being faculty members, the coach, and officers of the organization.

Shakopean Society

Charles Sigle, president

This society was organized to promote public speaking and debate. Oratorical contests and discussions on live current topics are the main features of the meetings.

Forensic Association

Paul X. Knoll, president

Membership of this organization is composed of varsity forensic representatives.

Varsity "O" Association

Percy Locey, president

An athletic association, membership being limited to men who have earned their letter in some branch of athletics.

Women's Athletic Association

Eline Anderson, president

Membership includes all women in college.

Vigilance Association

Robin Reed, chairman

A sophomore organization for the purpose of supervising the freshmen on the campus.

Inter-Fraternity Council

J. H. Hall president

Membership consists of one representative from each fraternity.

Pan-Hellenic Council

Lilly Nordgren, president

An inter-sorority organization, each house being represented by the president and one other member.

STUDENT PUBLICATIONS

The O. A. C. Daily Barometer

Editor—Homer L. Roberts

Manager—Elmer Butz

The student paper is now issued as a four-page, six-column daily. It publishes the news of the college, and is of general public importance as representing the interests, character, and accomplishments of the student body at the college. By action of the board of regents, resulting from a unanimous recommendation of the student body, a portion of the regular term student fee of \$5.50 is devoted to the "Barometer," and every student regularly receives the paper.

The Beaver

Editor—Howard Lewis

Manager—James R. Rosesteil

The annual publication of the junior class is a high-class publication, substantially bound, and fully illustrated with photo-engravings, pen-and-ink sketches, and line and wash drawings. It is a full-dress carnival of the year's life, representing the dignity, the beauty, the versatility, the gaiety, the traditions, the sentiment, and the solidarity of the Oregon Agricultural College.

The Oregon Countryman

Editor—John C. Burtner

An illustrated monthly magazine, published by the students in agriculture and home economics under the supervision of the faculties of these schools.

The Annual Cruise

Editor—Wilfred D. Lovegreen

Manager—Ernest E. Fischer

Is an illustrated magazine published by the forest club. Its objects are more closely to unite the forestry and lumbering interests of the Pacific northwest, to advance scientific forestry and lumbering,

and to promote forest interests in every feasible way.

The O. A. C. Directory

Editor—W. Verne McKinney

Manager—Donald Patrick

A magazine published twice a year by the students of the School of Commerce under the supervision of the faculty of the School, is devoted to the commercial interests of the College and State. It contains a complete directory of all the members of the institution, students, faculty, and employees.

The O. A. C. Alumnus

Editor—Zelta Feike

A monthly periodical edited and issued for the Alumni Association by the secretary of the general alumni association of the Oregon Agricultural college, whose office is at the college.

The Beaver Engineer

Editor—Robert Hamill

Manager—Wait Rising

A semi-annual magazine devoted to engineering and mechanic arts. Its purposes are to record engineering progress in the northwest; to furnish news; to publish records of scientific work done by students in this institution; and to publish any matter of special technical and scientific interest to civil, mining, mechanical, and electrical engineers, and foresters and others engaged in technical pursuits.

The Orange Owl

Editor—Alfred L. Koeppen

Manager—Fred Kelly

This publication, issued quarterly during the college year, is designed to promote creative talent among students in the expression of wit, humor, verse, prose fancy, whimsical essay, pen sketch, and cartoon.

ATHLETICS

The Captains and Coaches

Football—Captain, Percy Locey ; coach, R. B. Rutherford.

Basketball—Captain, "Pug" Ross ; coach, R. B. Hager.

Wrestling—Captain, Bud Fish ; coach, Guy L. Rathbun.

Baseball—Captain, Hugh McKenna ; coach, Ralph Coleman.

Track—Captain, Mert Hollinger ; coach, Mike (Dad) Butler.

Freshman coach, C. W. Hubbard.

Freshman track coach, Guy L. Rathbun.

It has always been the motto of the school, "Every O. A. C. Man an Athlete," and to this end the present system of inter-collegiate and intra-mural athletics has been evolved. The aim is to get as many men as possible actively interested in athletics by participation in it. The inter-collegiate sports are divided into two groups, a major and minor group as follows: Major sports, football, basketball, wrestling, track, and baseball; minor sports, soccer and tennis (now before the Board of Control). Inter-collegiate athletics is under the control of the Board of Control of the Student Body and under the supervision of a head coach and director of inter-collegiate athletics.

Intramural athletics come under the supervision of a member of the staff of the Physical Education Department. The contests are between fraternities, clubs, etc., the winner in each sport receiving a plaque or cup. Intramural competition is confined to the following sports: Cross country, basketball, indoor baseball, track, baseball, and wrestling.

Make Faculty Friends

Get the habit of meeting your professors outside of the class room. Personal acquaintance and friendly conversation has more than once raised a poor grade.

ATHLETIC SCHEDULE 1922-1923

Football

Date	Opponent	Place
Oct. 21	Washington	Seattle
28	Stanford	Corvallis
Nov. 4	Multnomah Club	Portland
18	Oregon	Corvallis
25	Washington S. C.	Portland

Basketball

Jan. 22	Idaho	Corvallis
27	Washington	Corvallis
Feb. 2	Oregon	Corvallis
3	Oregon	Corvallis
6	Washington S. C.	Corvallis
9	Oregon	Eugene
10	Oregon	Eugene
17	Washington	Seattle
19	Washington S. C.	Pullman
21	Idaho	Moscow
23	Whitman	Walla Walla

Wrestling

Feb. 23	Washington	Seattle
Mar. 10	Washington S. C.	Corvallis

Track

May 19	Oregon	Eugene
--------	--------------	--------

Baseball

April 25	Idaho	Corvallis
26	Idaho	Corvallis
28	Whitman	Corvallis
30	Washington S. C.	Pullman
May 1	Washington S. C.	Pullman
3	Idaho	Moscow
4	Idaho	Moscow
5	Whitman	Walla Walla
11	Oregon	Corvallis
12	Oregon	Corvallis
16	Washington S. C.	Corvallis
17	Washington S. C.	Corvallis
18	Oregon	Eugene
19	Oregon	Eugene

OCTOBER, 1922

Sun.
22

Mon.
23

Tues.
24

NOVEMBER, 1922
Wed.
25

Thurs.
26

Fri.
27

Sat.
28

OCTOBER, 1922

Sun.

29

Mon.

30

Tues.

31

NOVEMBER, 1922

Wed.

1

Thurs.

2

Fri.

3

Sat.

4

NOVEMBER, 1922

Sun.

5

Mon.

6

Tues.

7

Wed.

8

Thurs.

9

Fri.

10

Sat.

11

NOVEMBER, 1922

Sun.

12

Mon.

13

Tues.

14

Wed.

15

Thurs.

16

Fri.

17

Sat.

18

NOVEMBER, 1922

Sun.

19

Mon.

20

Tues.

21

Wed.

22

Thurs.

23

Fri.

24

Sat.

25

NOVEMBER, 1922

Sun.

26

Mon.

27

Tues.

28

Wed.

29

Thurs.

30

DECEMBER, 1922

Fri.

1

Sat.

2

DECEMBER, 1922

Sun.

3

Mon.

4

Tues.

5

Wed.

6

Thurs.

7

Fri.

8

Sat.

9

DECEMBER, 1922

Sun.

10

Mon.

11

Tues.

12

Wed.

13

Thurs.

14

Fri.

15

Sat.

16

DECEMBER, 1922

Sun.
17

Mon.
18

Tues.
19

Wed.
20

Thurs.
21

Fri.
22

Sat.
23

DECEMBER, 1922

Sun.

24

Mon.

25

Tues.

26

Wed.

27

Thurs.

28

Fri.

29

Sat.

30

DECEMBER, 1922

Sun.

31

JANUARY, 1923

Mon.

1

Tues.

2

Wed.

3

Thurs.

4

Fri.

5

Sat.

6

JANUARY, 1923

Sun.

7

Mon.

8

Tues.

9

Wed.

10

Thurs.

11

Fri.

12

Sat.

13

JANUARY, 1923

Sun.
14

Mon.
15

Tues.
16

Wed.
17

Thurs.
18

Fri.
19

Sat.
20

JANUARY, 1923

Sun.

21

Mon.

22

Tues.

23

Wed.

24

Thurs.

25

Fri.

26

Sat.

27

JANUARY, 1923

Sun.
28

Mon.
29

Tues.
30

Wed.
31

FEBRUARY, 1923

Thurs.
1

Fri.
2

Sat.
3

FEBRUARY, 1923

Sun.

4

Mon.

5

Tues.

6

Wed.

7

Thurs.

8

Fri.

9

Sat.

10

FEBRUARY, 1923

Sun.
11

Mon.
12

Tues.
13

Wed.
14

MARCH, 1923
Thurs.
15

Fri.
16

Sat.
17

FEBRUARY, 1923

Sun.

18

Mon.

19

Tues.

20

Wed.

21

Thurs.

22

Fri.

23

Sat.

24

FEBRUARY, 1923

Sun.
25

Mon.
26

Tues.
27

Wed.
28

MARCH, 1923

Thurs.
1

Fri.
2

Sat.
3

MARCH, 1923

Sun.

4

Mon.

5

Tues.

6

Wed.

7

Thurs.

8

Fri.

9

Sat.

10

MARCH, 1923

Sun.

11

Mon.

12

Tues.

13

Wed.

14

Thurs.

15

Fri.

16

Sat.

17

MARCH, 1923

Sun.

18

Mon.

19

Tues.

20

Wed.

21

Thurs.

22

Fri.

23

Sat.

24

MARCH, 1923

Sun.
25

Mon.
26

Tues.
27

Wed.
28

Thurs.
29

Fri.
30

Sat.
31

APRIL, 1923

Sun.

1

Mon.

2

Tues.

3

Wed.

4

Thurs.

5

Fri.

6

Sat.

7

APRIL, 1923

Sun.

8

Mon.

9

Tues.

10

Wed.

11

Thurs.

12

Fri.

13

Sat.

14

APRIL, 1923

Sun.

15

Mon.

16

Tues.

17

Wed.

18

Thurs.

19

Fri.

20

Sat.

21

APRIL, 1923

Sun.
22

Mon.
23

Tues.
24

Wed.
25

Thurs.
26

Fri.
27

Sat.
28

APRIL, 1923

Sun.
29

Mon.
30

MAY, 1923

Tues.
1

Wed.
2

Thurs.
3

Fri.
4

Sat.
5

MAY, 1923

Sun.

6

Mon.

7

Tues.

8

Wed.

9

Thurs.

10

Fri.

11

Sat.

12

MAY, 1923

Sun.

13

Mon.

14

Tues.

15

Wed.

16

Thurs.

17

Fri.

18

Sat.

19

MAY, 1923

Sun.

20

Mon.

21

Tues

22

Wed.

23

Thurs.

24

Fri.

25

Sat.

26

MAY, 1923

Sun.

27

Mon.

28

Tues.

29

Wed.

30

Thurs.

31

JUNE, 1923

Fri.

1

Sat.

2

JUNE, 1923

Sun.

3

Mon.

4

Tues.

5

Wed.

6

Thurs.

7

Fri.

8

Sat.

9

CLASS SCHEDULE—SECOND TERM

Name.....	Age.....	Date.....	192.....
School or Department.....	Major.....	Class.....	
Subject.....	Room.....	W.....	T.....
	Cr. No.	M.....	T.....
1.....			
2.....			
3.....			
4.....			
5.....			
6.....			
7.....			
8.....			
9.....			
10.....			

Student Loan Fund

Through the liberality of friends of the Oregon Agricultural College and through the accumulation of interest on loans, an irreducible loan fund aggregating \$18,276.80 (June, 1922) has been established. The purpose, as expressed by one of the donors, is "not to induce students to attend school by providing money that can be easily obtained, but rather to aid those who have determined to secure an education and are paying the cost wholly or in part from their own earnings."

The fund consists of the following contributions:

(1) One thousand dollars (\$1,000) from Hon. R. A. Booth of Eugene, restricted to students studying:

(a) Agriculture in its various phases, with a view of becoming producers from the soil.

(b) Such branches of mechanics as properly relate to agriculture.

(c) Home Economics.

(2) Five hundred dollars (\$500) known as the Asby Pierce Student Loan Fund.

(3) One thousand dollars (\$1,000) from the College Domestic Science Dining Room at the Panama-Pacific International Exposition, restricted to the use of women students.

(4) Four thousand six hundred dollars (\$4,600), without restriction, from accumulated interest and from various College organizations, such as Folk Club, Philadelphian and Feronian Literary societies, the Barometer, the Oregon Countryman, the Cosmopolitan Club, the Faculty, the Alumni, the Christian Associations, the Winter Short Course students of 1914, the Graduating class of 1915, Chapter AL of P. E. O., Portland, and by various individuals, including Mrs. Clara H. Walda, Portland; Hon. Thomas Kay, Salem; Hon. James Withycombe, and W. D. Wheelwright.

PRIZES

The Clara H. Waldo prize of \$140 is an award annually made in the proportions of \$50, \$40, \$30, and \$20, respectively, to the woman of highest standing registered as a student in one of the degree curricula in the senior, junior, sophomore, and freshman year.

The A. J. Johnson prize of \$140 is an award annually made beginning with the year 1919-1920 in the proportions of \$50, \$40, \$30, and \$20 respectively to the man of highest standing registered as a regular student in one of the degree curricula in the senior, junior, sophomore, and freshman year.

In the distribution of the Waldo and Johnson prizes, the committees having charge of the awards are guided by the following points:

- (a) Proficiency in scholarship.
- (b) Success in student activities.
- (c) Qualities of manhood and womanhood.
- (d) Qualities of leadership.

The Joseph H. Albert prize of \$25 is an award annually made to the senior student who is adjudged by a joint committee of faculty and students to have made the greatest progress toward the ideal of character, service, and wholesome influence.

The J. M. Dickson Scholarship of \$100 established by the estate of the late J. M. Dickson to commemorate his service to the dairy industry of the State and his faith in education as a factor in the development of agriculture, is awarded annually at the end of the junior year to the student majoring in dairy husbandry who in the opinion of the departmental staff excels in scholarship and initiative, and gives promise of attaining leadership in some phase of the dairy industry.

The Mountain States Power Company Prize. This prize, offered by the Mountain States Power Company, is a silver loving cup presented to the senior man who during his entire college career has maintained a high standard of scholarship and manhood and has excelled in athletics.

L. J. Simpson Scholarship Loan Fund

The College has received a gift of \$2,000 from L. J. Simpson of North Bend, Oregon, whereby five annual scholarship loans of \$100 each, continuing throughout the four years of the student's college course, will be awarded to worthy students whose needs justify the awards.

The J. T. Apperson Agricultural Educational Fund

By the will of the late Hon. J. T. Apperson, Regent of the College since its foundation, a fund amounting to between \$25,000 and \$40,000 is to be a perpetual endowment, administered by the State Land Board of Oregon, for the assistance of worthy young men and women, "who are actual, bona fide residents of the State of Oregon, and who would otherwise be unable to bear the expense of a college course at the Oregon Agricultural College." The income from this estate is to be loaned to students at a low rate of interest. Applicants for loans must be recommended to the State Land Board by the President of the College and the State Superintendent of Public Instruction.

Letters to Mother

Don't forget mother in the hustle and bustle of college work. Set aside a regular time for writing to her, and don't depart from your program.

MEMORANDA

The Memoranda of the Oregon Agricultural College are published by the Board of Trustees. The first issue, published in 1888, is a silver-plate book, and is a valuable addition to the collection of the Oregon Agricultural College. It contains a list of the names of the students who have received a high standard of scholarship and has been published in various

J. J. Simpson Scholarship Loan Fund

The J. J. Simpson Scholarship Loan Fund was established in 1891 by the Oregon Agricultural College. It is a fund of \$10,000, and is used to loan money to students who are unable to pay for their education. The fund is named in honor of J. J. Simpson, a prominent farmer and politician of Oregon. The fund is managed by the Board of Trustees of the Oregon Agricultural College.

The J. T. Anderson Agricultural

Educational Fund

The J. T. Anderson Agricultural Educational Fund was established in 1891 by the Oregon Agricultural College. It is a fund of \$10,000, and is used to loan money to students who are unable to pay for their education. The fund is named in honor of J. T. Anderson, a prominent farmer and politician of Oregon. The fund is managed by the Board of Trustees of the Oregon Agricultural College.

Letters to Mother

Dear Mother, I am writing to you from the college and I hope you are well. I am doing well here and hope to be home in a few days. I am writing to you to let you know how much I love you and how much I miss you. I am writing to you to let you know how much I love you and how much I miss you.

KEEP YOUR STUDENT BODY TICKET HERE

QUALITY
MERCHANDISE

Student
Outfitters
for Over
35 Years

J. M. NOLAN & SON

