

Oregon State

❖ STUDENT ❖

HANDBOOK

1930-31

1930

SEPTEMBER

S	M	T	W	T	F	S
....	1	2	3	4	5	6
7	8	9	10	11	12	13
14	15	16	17	18	19	20
21	22	23	24	25	26	27
28	29	30

OCTOBER

S	M	T	W	T	F	S
....	1	2	3	4
5	6	7	8	9	10	11
12	13	14	15	16	17	18
19	20	21	22	23	24	25
26	27	28	29	30	31

NOVEMBER

S	M	T	W	T	F	S
....	1
2	3	4	5	6	7	8
9	10	11	12	13	14	15
16	17	18	19	20	21	22
23	24	25	26	27	28	29
30

DECEMBER

S	M	T	W	T	F	S
....	1	2	3	4	5	6
7	8	9	10	11	12	13
14	15	16	17	18	19	20
21	22	23	24	25	26	27
28	29	30	31

1931

JANUARY

S	M	T	W	T	F	S
....	1	2	3
4	5	6	7	8	9	10
11	12	13	14	15	16	17
18	19	20	21	22	23	24
25	26	27	28	29	30	31

FEBRUARY

S	M	T	W	T	F	S
1	2	3	4	5	6	7
8	9	10	11	12	13	14
15	16	17	18	19	20	21
22	23	24	25	26	27	28

MARCH

S	M	T	W	T	F	S
1	2	3	4	5	6	7
8	9	10	11	12	13	14
15	16	17	18	19	20	21
22	23	24	25	26	27	28
29	30	31

APRIL

S	M	T	W	T	F	S
....	1	2	3	4
5	6	7	8	9	10	11
12	13	14	15	16	17	18
19	20	21	22	23	24	25
26	27	28	29	30

MAY

S	M	T	W	T	F	S
....	1	2
3	4	5	6	7	8	9
10	11	12	13	14	15	16
17	18	19	20	21	22	23
24	25	26	27	28	29	30
31

JUNE

S	M	T	W	T	F	S
....	1	2	3	4	5	6
7	8	9	10	11	12	13
14	15	16	17	18	19	20
21	22	23	24	25	26	27
28	29	30

072.1

1930-31

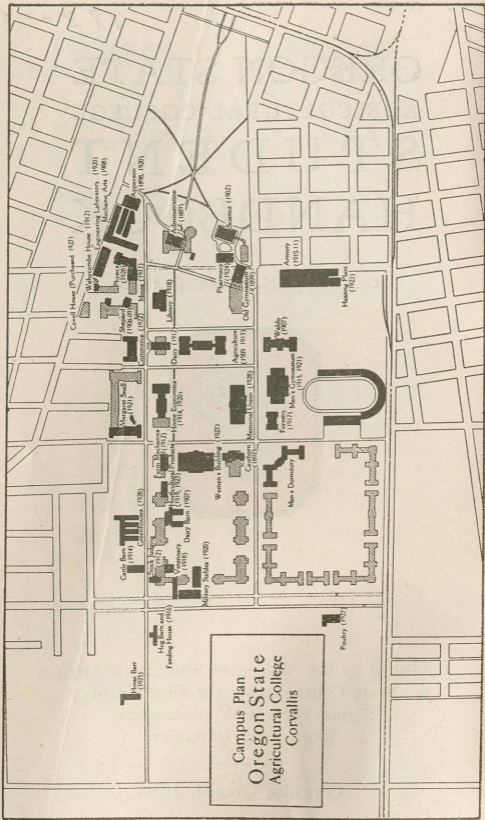
OREGON STATE
AGRICULTURAL COLLEGE
STUDENT
HANDBOOK

GORDON N. SMITH, Editor



Published by the Associated Students of Oregon
State College under the direction of
Sigma Delta Chi, professional
journalistic fraternity

Corvallis, Oregon, 1930



COLLEGE CALENDAR 1930-1931

1930

- September 20, Saturday .. Entrance examinations
 September 22, Monday Freshman registration
 September 27, Saturday
 Registration all other students
 September 29, Monday Recitations begin
 October 4, Saturday
 Latest day for fee returns in full
 October 11, Saturday.....
 Latest day for making changes in programs
 October 11, Saturday
 .. Latest day for filing change slips without fee
 October 11, Saturday Latest day for
 addition of new courses or new registrations
 October 18, Saturday
 Latest day for dropping courses
 without "F" when work is unsatisfactory
 October 31, November 1, Friday and Saturday
 Examinations for advanced standing
 November 1, Saturday Latest day for
 changes in advanced standing reports
 November 5, Wednesday
 Close of mid-term examinations
 November 7, Friday
 Latest day for removal of incompletes
 November 8, Saturday.....
 Latest day for refund of one-half fees
 November 11, Tuesday .. Armistice day; holiday
 November 14, 15, Friday, Saturday
 Homecoming
 November 15, Saturday.....
 Latest day to file applications for graduation
 November 27, 28, 29, Thursday, Friday, and
 Saturday, Thanksgiving vacation
 December 15, Monday Recitations end
 December 16-20, Tuesday to Saturday
 Final examinations
 December 20, Saturday First term ends

1931

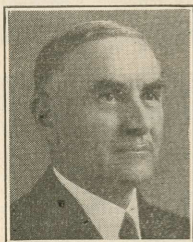
- January 3, Saturday Second
 term registration; entrance examinations
 January 5, Monday Recitations begin
 January 10, Saturday
 Latest day for fee refunds in full
 January 17, Saturday
 Latest day for filing change slips without fee

January 17, Saturday	Latest day for making changes in programs
January 17, Saturday.....	Latest day for addition of new courses or new registrations
January 24, Saturday Latest day for dropping courses without "F" when work is unsatisfactory
January 30, 31, Friday, Saturday Examinations for advanced standing
February 7, Saturday..... Latest day for changes in advanced standing reports
February 11, Wednesday Close of mid-term examinations
February 13, Friday Latest day for removal of incompletes
February 14, Saturday Latest day for refunds of one-half fees
February 23, Monday Day after Washington's birthday; holiday
March 14, Saturday Recitations end
March 16-20, inc., Monday to Friday Final examinations
March 20, Friday Second term ends
March 23, Monday Entrance examinations
March 24, Tuesday Third term registration
March 25, Wednesday Recitations begin
March 31, Tuesday Latest day for fee refunds in full
April 7, Tuesday Latest day for filing change slips without fee
April 7, Tuesday Latest day for making changes in programs
April 7, Tuesday Latest day for addition of new courses or new registrations
April 14, Tuesday Latest day for dropping courses without "F" when work is unsatisfactory
April 24, 25, Friday, Saturday Examinations for advanced standing
April 28, Tuesday Latest day for changes in advanced standing reports
April 29, Wednesday Close of mid-term examinations
May 1, Friday Latest day for removal of incompletes
May 5, Tuesday Latest day for refund of one-half fees

May 15, Friday.....	Latest day for seniors to adjust graduation deficiencies
May 27, Wednesday ..	Senior examinations close
May 29, Friday	Recitations end
May 30, Saturday	Memorial Day; holiday
May 31, Sunday	Baccalaureate service
June 1, Monday
.....	Senior class day; Alumni reunion
June 2, Tuesday
.....	Sixty-second annual commencement
June 2-6, inc., Tuesday to Saturday
.....	Final examinations
June 6, Saturday	Third term ends
June 22, Monday	Summer session begins
July 4, Saturday	Independence day; holiday
July 31, Friday	Summer session ends

THE PRESIDENT'S GREETING

It gives me a great deal of pleasure to extend greetings to those entering the College for the



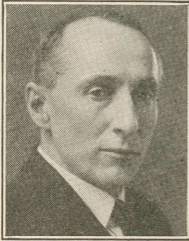
first time. Here you will find conditions most favorable under which to pursue your various studies; here you will be in an environment of understanding and sympathy, of constructive influence for your proper growth as men and women and citizens. Here you are expected not only to acquire the information that is to be had, but also acquire a

larger outlook on life; to develop a philosophy which will make your relationships with your fellows wholesome and happy, that you may take your places in your several pursuits, and be a credit to yourselves and to those to whom you are responsible.

W. J. KERR, President.

DR. U. G. DUBACH
Dean of Men

It is fine to begin with a class like yours. It will be finer still to graduate with the same group four years hence; and yet finer if you can finish with a feeling of satisfaction that you've approached your own ideals and expectations, and those of Oregon State as well.



Much depends upon the freshman year—yes, the first term of that year. Give yourself the chance you deserve and you will be numbered in the group when graduation time comes.

U. G. DUBACH

DR. K. W. JAMESON
Dean of Women

On behalf of the women students of Oregon State College I welcome you to their campus. Coming to college is a sort of commencement exercise, for you will be beginning a new form of living. You will have to take care of your individual needs; you will be compelled to plan your time for work; you will choose your own friends. Just how well you manage this new existence will indicate very largely how well you will manage your life after college. I hope you will have no regrets. Students and faculty are ready to help you—to advise and to guide you. They are friends and want you to be



their friend. I can wish nothing better for you than four years of serious effort in training your mind, four years of experience in friendship such as you will find here.

K. W. JAMESON

MR. E. B. LEMON
Registrar

The function of an educational institution is to assist young people in preparing for life. To do



this effectively requires a personal interest in the welfare of every student. Oregon State consistently puts forth a very sincere effort to meet this ideal.

The college always looks forward with keen anticipation to making the acquaintance of any freshman class. It is logical that this should be so. From the freshman class must come a senior class, finished product of the institution. It is through these perspectives that we greet you as members of the class of 1934.

In any undertaking a good beginning may be essential to success. College is no exception to the rule. If graduation in 1934 is your goal, the first term and particularly freshman week are of prime importance. For these reasons it is our desire to give special attention to freshmen. The Registrar's office can be of assistance, and we invite you to take advantage of the service it may render.

E. B. LEMON

Freshmen will consult with their major professor concerning matters pertaining to class schedules. Many unfortunate mistakes will be avoided by so doing.

GEORGE A. KNUTSEN
President of the Associated Students

The students of Oregon State welcome you to the college, and we hope that you will enter whole-heartedly into the spirit of Oregon State, and work for her advancement.

Remember that you can receive no more from your college than you, in turn, give to her. Look back over your high school career. Notice the neglected opportunities and the mistakes you made. Resolve now that you will not make those same mistakes in college.

Make the very best of the four happy years before you.

GEORGE A. KNUTSEN.



A WORD FROM THE BEAVER KNIGHTS
Frank J. Miller, Duke

The Beaver Knight chapter of Intercollegiate Knights is an underclassmen's honorary service organization which acts as a "pep and tradition" committee for the college. The order is authorized by the constitution of the Associated Students and sanctioned by the college administration.

The object of the organization is to instruct the freshmen in songs, yells, and traditions of the college which must be upheld in order to have true Oregon State spirit; to receive and entertain visiting teams; to help with campus traffic; and to function at all college events such as athletic contests, convocations, and receptions.

The student council, backed by the administration, encourages the work done by the Beaver Knights. The method of instruction of trad-

itions and the method of punishment of offenders may at times seem harsh and unnecessary, but it is the sort of discipline that experience has shown most effective.

You are required to carry this "Rook Bible" at all times. The schedule in the back must be filled in completely in ink. Be sure that you receive credit for all work done, duties fulfilled, convocations attended, and rook dances attended.

You are required to memorize the following information and be ready to recite when called upon by any Beaver Knight.

Sketch of Oregon State	23
Traditions	11
Class Gifts	13
Names of Deans of Schools	24
Names of Associated Student Officers	28
Honorary Organizations	22
Publications	31
All Songs and Yells	70

SPURS

Kathleen Wheeler, President

Spurs is a sophomore women's national honorary society whose purpose is to promote all activities in which the student body takes part and to uphold all college traditions. New members are pledged and initiated at the close of the spring quarter by the retiring Spurs. A member is recognized by the gold spur pin and the badge, which is an orange spur on a black felt background. The Spur rules are:

1. All rookesses shall attend convocation, student body assembly, class meetings, women's league, and Y. W. C. A. meetings.

2. Every Wednesday all rookesses shall wear the customary green ribbon, which is to be put on before breakfast and not to be taken off until bed time. If a rookess wears a hat, the ribbon must be worn on the hat.

3. Rookesses shall show proper respect to all sophomores and other upperclassmen and extend them the usual courtesies.

4. Rookesses shall not walk on campus grass.

5. Rookesses shall speak to all members of the faculty and be congenial with all students.

6. There shall be no fussing at athletic events.
7. Rookesses must know all college songs.
8. Rookesses shall not have library or mid-week dates.
9. Rookesses shall be familiar with all college rules and traditions.
10. Violations of all rules are tried by Spurs and punished accordingly.

THE HONOR SYSTEM

Each duly registered member of the associated students of O. S. C. becomes a part of a large self-governing body. With this privilege goes the responsibility of maintaining the high standard of honor which has become one of the valuable factors of student life at Oregon State.

New students frequently ask just what is considered dishonest college work. In general it is merely that which personal honor and pride would condemn even without a specific code. But to be more specific it is understood here that an honest student will neither give nor receive aid in examinations except by permission of the instructor and will not submit work as his own which is not his own.

Oregon State holds students of unimpeachable honor—of inviolate integrity. She wants none other.

WALTER STOKESBARY,
Chairman of Honor Council

HINTS FOR FRESHMEN

You are an Oregon Stater now—always boost for your college and strive to be a credit to it.

Be a loyal freshman—play the game and do what is expected of you.

Always rise when the Alma Mater is sung.

Attend all athletic contests.

Get posted on rules for “fussing.”

Go to all your class meetings.

Don't begin cutting classes. It doesn't pay.

Make it a habit to attend convocation.

Learn the songs and yells in the Hand Book, and attend all rallies.

Make some activity your objective; stick to it.

Last, but not least, write home often. Do not forget the folks at home.

TRADITIONS

Oregon State is a college of ideals—ideals of character, honesty, courage, and fair play. Upon these principles are the traditions of the institution built. No college is stronger than its ideals; and all colleges are revered and loved because of traditions based upon high ideals.

Conduct Traditions

Pride in the campus censors the practice of walking on the grass.

Smoking on the campus is prohibited by one of the oldest, most rigorously observed traditions.

Every student is expected to attend athletic events, but there shall be no "fussing"; that is, he shall not accompany a young lady to the games.

Rooks must wear their green hats at all times, and rookesses their green ribbons on the scheduled days.

At athletic contests all students always stay until the event is finished.

All men students remove their hats in buildings.

CLASS TRADITIONS

Seniors

Table at Wagner's.	Trysting tree.
Bench at Co-op	Trip to Newport
Hats; mustache.	when rhododendrons
Gifts to college.	are in bloom.

Juniors

Junior Lunch.	Junior Breakfast.
Corduroy trousers.	Junior Prom.
Campus Week-end.	Junior Bust.

Sophomores

Soph-Rook tug-of-war.	Cotillion.
Soph-Rook Olympics.	Sweaters.

Freshmen

Green lids.	Burning of the green.
Rook bonfire.	Tug-of-war.

TRADITIONAL COLLEGE EVENTS

The O. S. C. Educational Exposition, held for the first time the latter part of February, 1924, has been established as an annual event at the college. The agricultural fair, the engineering show, and many of the displays and exhibitions of the different schools of the campus are combined in the Educational Exposition. At this time high school students, faculty members, and other visitors are entertained by the college.

Homecoming Week-end occurs in the fall of each year at the time of one of the big conference football games. It is a time when alumni are especially urged to return for a visit to their Alma Mater.

The annual inspection day occurs on a regular military drill day, usually some time in the third term. At this time the R. O. T. C. is reviewed by military and civil authorities.

The annual Military Tournament is an event held usually the latter part of the spring term by the R. O. T. C.

Awarding of honor prizes and pledging to Phi Kappa Phi, national scholastic honorary fraternity, are celebrated Phi Kappa Phi day in May.

Campus Week-end is outstanding in that it marks the time at which the freshmen discard their "lids," the sophomores don corduroy trousers, the juniors cultivate embryo mustaches, and the seniors experience the thrill of being near-alumni. The rook-sophomore tug-o'-war and the "burning of the green" are popular attractions. Campus Week-end is usually two weeks before the end of the spring term.

THE JUNIOR CERTIFICATE

The junior certificate is awarded to students who have completed all work required in their courses for the freshman and sophomore years. It is required of all students before they can register as juniors. Forget about the elective courses until you are a junior, if you are registered in a degree course, and enroll in the courses required in the degree curriculum.

Grade points, as well as college credits, are

required for graduation. The higher grades carry a premium in grade points, while mere passing grades do not carry points, and failures result in deductions. It is important, therefore, that freshmen give attention to grades from the beginning in order not to place a serious obstacle in the road to graduation.

LEST YOU FORGET

YOU MUST—

- Remove lid on entering any school building.
- Wear your green lid outside.
- Attend convocations.
- Support athletics.
- Respect your upperclassmen.
- Work for greater Oregon State.
- Strive for outstanding scholastic attainment.
- Consult your freshman adviser.
- Know members of varsity teams.
- Wear your rooster's lid on the days of varsity games.

YOU MUST NEVER—

- Smoke on the campus.
- Start a rally.
- Step on the grass.
- Wear high school pins or letters.
- Fuss at athletic events.
- Fuss on week nights.
- Leave before the end of a game.
- Sit on the senior bench.
- Wear cords or leather puttees.
- Ride bicycles on the sidewalks.

THE CLASS GIFTS

The custom for each departing class to leave a gift that will enrich the campus started with the class of 1901.

The large silver poplar tree, between the administration building and science hall was used as a gathering place for students. The class of 1901 placed a large granite stone under the tree to hallow the surrounding ground so that only seniors could tread the grass under the old sentinel, now known as the trysting tree.

The class of 1902 left the lady of the fountain at the eastern entrance to the campus. The lady was stolen but later found in Portland. It was returned to the college and securely placed in position only to be completely demolished by vandals in the fall of 1928.

Other Class Gifts

- 1903—Cement bench on the lower campus.
 1907—Cement bench in grove near women's old gym.
 1908-09-10-12—The band stand east of agriculture hall.
 1911—Flag pole near the band stand.
 1913—Elms in front of library.
 1914—Elms in front of mines building.
 1915—Tulip trees in front of home economics building.
 1916—Fountain in front of agriculture hall.
 1917—Cement pillars east entrance to campus.
 1918—Arch in front of entrance to Alpha hall.
 1919—Clock in library.
 1920—Bronze statue in front of men's gymnasium.
 1921—\$1,000 to the Memorial Union building.
 1922—\$1,000 to the Memorial Union building.
 1923—Bronze memorial in the library dedicated to the men of Oregon State killed in the World War.
 1924-25—Mural paintings in the library.
 1926—Bronze doors for the Memorial Union building.
 1927—Fireplace for Memorial Union building.
 1928—Fireplace for Memorial Union building.
 1929—Globe atlas for Memorial Union building.
 1930—Grand piano in the Memorial Union building.

O. S. C. STUDENT CO-OP.

The Co-op book store is owned and controlled by the students of the Oregon State college and operated under the supervision of a board of directors consisting of seven students and two faculty members.

The board meets at the discretion of the president and transacts all business pertaining to the

efficient operation of the store. A manager is chosen, under the articles of association, whose duty it is to operate the store on a business basis under the direction of the board.

Any vacancy caused by the withdrawal of a member is filled by the board, six of whom constitute a quorum. The term of office is one school year. The officers for the school year of 1930-31 are:

Dr. N. H. Comish and Dean G. W. Peavy, faculty members; Agnes Nasset, Charles Simpson, and Tom Drynan, senior members; Alling Goss and George Elden, junior members; and Howard Stevens and James Smillie, sophomore members.

Every student and faculty member of the college who desires may become a member of the Co-op book store. A membership fee of 50 cents entitles the holder to a special trade or cash dividend on his purchases. This dividend is declared at the end of the school year by the board of directors and in the past has averaged 11 per cent in trade or six per cent in cash.

A close cooperation is maintained with the faculty in order that the store may be able to furnish the student with the exact materials his work demands. Attention is given to special order business for supplies in any field pertaining to the college activities.

Every student is invited to bring suggestions for improved service or complaints of any sort directly to the management. Every effort is being made to give prompt, courteous, and efficient service to every student of the college. The Co-op book store belongs to the students and deserves their loyalty and cooperation. Work with it and share its benefits.

COOPERATIVE MANAGERS ASSOCIATION

The Cooperative Managers association, composed of the managers of all the fraternities and sororities, was formed to enable the individual managers to economize through large quantity buying. It is, like the book store, a profit-sharing organization, and is a medium for supplying

nearly everything required to operate a fraternity or sorority.

The association elects a board of directors to conduct its business, those for this year being Clarence White, president; Ruth Hudson, vice-president; Rachael Williams, secretary; E. E. Seibert, manager; N. H. Comish, faculty adviser; Lurton Halderman and Sid Hammond, members.

YOUNG MEN'S CHRISTIAN ASS'N.

The Y. M. C. A. is an organization of students which exists to serve all men on the campus. It maintains a special building, Shepard hall, in which there is a comfortable reading and study room, a quiet rest and lunch room where hot drinks may be prepared, a shower room, a mail service, and a free employment bureau. Forty per cent of the men in Oregon State are helped through college by work obtained through this employment service.

The association takes into membership all men who subscribe to its objectives. No membership fee is required.

In addition to these services the Y. M. C. A., in cooperation with the Y. W. C. A. and the student societies of the churches, brings to the campus nationally known speakers with messages dealing with every type of problem facing the youth of today. The Y. M. C. A. and the Y. W. C. A. conduct discussion groups in the fraternities, sororities, and independent clubs under capable leadership.

The work is carried on by a student cabinet under the leadership of Charles L. Crumly, general secretary. Mrs. Lula Howard is in charge of the housing and employment service for all students.

The Y. M. C. A. cabinet officers for this year include the following: W. Alling Goss, president; Joe Mulligan, vice-president; Myron Powers, secretary; and Elmer Foster, treasurer.

The library is a place to study and borrow books. It is for your convenience. In the past, misguided ones have used it as a meeting place—a habit frowned upon by college authorities.

THE YOUNG WOMEN'S CHRISTIAN ASSOCIATION

The Y. W. C. A. is an international movement of women. The students are aiming toward more real values in life. Friendships are made, barriers are broken down, and leaderships developed through such interests as world fellowship, music, annual waffle breakfast, bazaar, and teas.

A freshman who shows ability and interest as a committee member is eligible for a chairmanship. Those who prove themselves especially valuable may serve on either council or the cabinet.

Council members are led by the following officers: Bessie Stout, president; Clara Noble, vice-president; Elizabeth Abraham, secretary; and Agnes Nasset, treasurer.

GO TO CHURCH

History records man as a being who worships. The desire to worship is universal as among every people of whom we have record signs of worship have been discovered.

Today, while attending college, we are thrust upon our own resources away from our parents. Yet the deep wish in the heart of every father and mother is that we remain true to the teachings of our youth. By home training and tradition we have some knowledge of the purposes and claims of religion.

In every man there is a conflict between the forces which pull him up and the forces which pull him down, and in the Bible man finds a standard whereby to guide his life. Religion in its broadest sense is life lived in all its relationships. Religion is the ballast which steadies man's life. Religion is friendship with God.

The Christian associations of the college wish to cooperate with the churches of Corvallis. We recommend to new students the following churches, with the special hope that the church-going habit learned at home may not be lost at Oregon State.

First Presbyterian, Rev. John S. Burns, 864 Monroe street, phone 741; student pastor, Rev.

Monroe G. Everett, 23rd & Monroe, phone 764.

First Methodist, Rev. James E. Milligan, 119 South 9th, phone 738-W; student worker, Miss Mildred Bartholomew, Hay Apts., phone 918-J.

Methodist Episcopal South, Rev. Edward C. Smith, 134 South 5th, phone 1174-R.

Evangelical, Rev. Paul P. Peddicord, 1055 Monroe street, phone 777-R.

Episcopal, Rev. D. Vincent Gray, 321 South 7th, phone 1130.

First Baptist, Rev. Frank Matthews, 2219 Van Buren street, phone 853.

Congregational, Rev. Fred Morrow, 858 Madison street, phone 713-W.

Christian, to be supplied.

Catholic, Father E. J. Murnane, 338 South 4th, phone 231-J.

Lutheran, Rev. Wm. Schoeler, 205 North 11th street, phone 1188-J.

Lutheran, Missouri Synod, Rev. E. J. A. Probst, 1600 Van Buren street, phone 441-W.

Christian Science, Prof. H. T. Drill, 1600 Van Buren street, phone 194.

Adventist, Elder George Murry, South Corvallis.

Christian and Missionary Alliance, Rev. G. H. Steiglitz.

Full Gospel, Rev. J. H. Fitzpatrick, 351 Adams street, phone 1175-M.

FRATERNITIES

Don't be too hasty, friend rook, in accepting the pledge pin of a fraternity. Do you realize that this will be one of the most important acts of your college career? Have you considered that this house will be your home for four years of college life, and that after graduation you will be known by your affiliation with it at Oregon State?

Take your time. Think over the proposition, and be cautious. Do not be drawn into a hasty decision, and, if necessary, demand time in which to investigate. Be free to consult your adviser about financial and general standing of the organization. Certainly the matter of what it will cost you to live in a house is of importance

and you have a right to know before you are pledged.

The best etiquette of Greek letter organizations is silence. The fraternity always seeks the man, not the man the fraternity.

INTER-COLLEGIATE INDEPENDENTS ASSOCIATION

Oregon State college, one of the first to organize its non-fraternity and non-sorority students, has one of the strongest and largest organizations of its kind in existence. Four years ago it became a charter member of the inter-college organization.

Governed by the Independent Student council, the association aims to provide social and athletic ideals. It attempts to direct the lives of its members into those channels which aid them in their collegiate and business careers. Lasting friendships result from the close acquaintanceships formed during college days.

Students not members of a fraternity or sorority automatically become members of the association. Upon payment of a small fee they are listed as active members.

The association is divided into four divisions: the women's hall, Wytomachee club, men's halls, and Rosswood clubs. Last year's membership listed over half of the students on the campus.

Independent Student Council.....	
Ernest Woods	1104
Men's Dorms., Harold Southwick, Buxton	1108
Buxton, Harry Fowells	1182
Hawley, Don Darrow	1077
Weatherford, Leonard Gilson	1104
Cauthorn, Oran Anderson	1081
Poling, Kenneth Roberts	1183
Women's Halls, Alice Steele, Snell Hall.....	57
Kidder, Helen Russell.....	112
Snell, Alice Steele	57
Waldo, Marjorie Bush.....	94, 95
Rosswood, Lyle Beyers,	965-J
Wytomachee, Lela Hathaway,	323-R

ROSSWOOD ASSOCIATION

Any student living down town and not in a fraternity or sorority is eligible to membership in the Rosswood association. The association is divided into five sections; Alpee, Hesperian, Orion, Prokyon, and Tri-V clubs. Each of these clubs is further divided, each division being headed by an upperclass captain.

The association aims to help its members in every way that will further their development during their college days. Social, athletic, and intellectual activities are provided and encouraged. Meetings of the clubs are held at regular intervals. The Rosswood association, also, is a member of the Independent Student council and the Inter-collegiate association.

Membership requirements to the independent downtown clubs are the same as those of the association and the district in which a man lives determines the club of which he will be a member. The club districts are as follows: Orion club, all men living north of Monroe and Arnold Way and west of Twelfth street; Alpee club, all men living north of Monroe and east of Twelfth; Tri-V club, all men living south of Monroe and east of Thirteenth; and Hesperian club, all men living south of Monroe and Arnold Way and west of Thirteenth. The purpose of clubs is similar to that of the controlling organization—the Rosswood association.

Alpee House, Lyle Beyers	965-J
Alpee Club, Kenneth Baker	701-J
Hesperian Club, Herbert Swarner	329-M
Mizamiam Club, Walter Bowne	1063-J
Orion Club, Alvin Meade	115 North 16th
Prokyon Club, Lawrence Hamilton	1013
Tri-V Club, Dalton Foster	872-J

SORORITIES, FRATERNITIES, AND HALLS

Sororities

Alpha Chi Omega, 33 North 26th	593
Alpha Delta Pi, 8 Park Terrace	43
Alpha Gamma Delta, 26th and Harrison	712
Alpha Omicron Pi, 560 Madison	522

Alpha Xi Delta, 330 North 23rd	93
Beta Phi Alpha, 27 Park Terrace	88
Chi Omega, 659 Adams Street.....	610
Delta Delta Delta, 340 North 26th	595
Delta Zeta, 23rd and Van Buren	310
Gamma Phi Beta, 8th and Jefferson	609
Kappa Alpha Theta, 145 North 21st	115
Kappa Delta, 21st and Monroe	119
Kappa Kappa Gamma, 10th and Van Buren	39
Pi Beta Phi, 30th and Harrison	575
Sigma Kappa, 26th and Van Buren	611
Zeta Tau Alpha, 29th and Van Buren	63

Fraternities

Acacia, 2332 Monroe	680
Alpha Chi Rho, 312 North 25th	147
Alpha Gamma Rho, 2500 Monroe	85
Alpha Sigma Phi, 957 Jefferson	309
Alpha Tau Omega, 309 North 26th	480
Beta Kappa, 119 North 9th	597
Beta Phi Tau, 854 Jefferson	1126
Beta Theta Pi, 330 North 9th	893
Delta Kappa, 58 North 26th	156
Delta Sigma Phi, 4th and Van Buren	296
Delta Tau Delta, 127 North 13th	120
Delta Upsilon, 25th and Van Buren	477
Kappa Delta Rho, 140 North 23rd	28
Kappa Delta Sigma, 408 North 8th	207
Kappa Psi, 660 Madison	656
Kappa Sigma, 239 North 8th	420
Lambda Chi Alpha, 100 North 25	840, 841
Phi Delta Theta, 13th and Monroe	435
Phi Gamma Delta 348 North 25th	307
Phi Kappa Tau, 242 North 15th	769
Phi Pi Phi, 320 North 9th	47
Phi Sigma Kappa, 14th and Jackson	92
Pi Kappa Alpha, 5th and Jefferson	283
Pi Kappa Phi, 21st and Harrison	87
Sigma Alpha Epsilon, 29th and Harrison	36, 37
Sigma Chi, 22nd and Campus	570
Sigma Nu, 10th and Jackson	368
Sigma Phi Epsilon, 26th and Van Buren ...	61
Sigma Phi Sigma, Shepard Way & Campus	291
Sigma Pi, 324 South 10th	42
Tau Delta, 13th and Van Buren	216
Tau Kappa Epsilon, 408 North 25th	71
Theta Chi, 361 North 26th	722
Theta Delta Nu, 13th and Jackson	72

Theta Kappa Nu, 227 North 11th	369
Theta Xi, 15th and Van Buren	86

Halls

Kidder	112
Snell	57
Waldo	94, 95
Floors—	1st 2nd 3rd 4th 5th
Buxton	1107 1108 1182
Cauthorn 1081 1082 1083
Hawley	1077 1078 1079
Poling	1183 1183 1092 1093
Weatherford ..	1101

HONOR SOCIETIES

Any student receiving the distinction of election to any honorary society is looked upon with approving eyes by college authorities and students who are working toward that same goal. Election to "honorarys" is based on excellence in scholarship, leadership, personality, and efficiency in a particular subject. Only a limited number of the student body is chosen yearly for membership. The fact that most of these societies are national in scope, with chapters in the leading colleges and universities and with uniformly high standards for membership, makes election to one a distinction highly prized. It is important that each new incoming student realize the importance and significance of such organizations from the beginning of the college year—freshmen week. To "make an honorary," a few don'ts may be helpful.

Don't be afraid to study.

Don't put off until the week end what is to be studied today.

Don't be a know-all, but rather cultivate a pleasing personality.

Don't be a high-brow; encourage the "hello" spirit.

Don't wait for some one else to go ahead.

Don't give up.

The following list includes honorary organization represented at Oregon State:

Alpha Delta Sigma—Advertising; men.

Alpha Kappa Psi—Commerce; men.

Alpha Zeta—Agriculture; men.

- Beta Alpha Psi—Accounting; men.
 Cap and Gown—Senior women.
 Chi Alpha Chi—Advertising; women.
 Parthenia—Physical education; women.
 Delta Sigma Rho—Forensic; men and women.
 Eta Kappa Nu—Electrical engineering; men.
 Euterpe—Music; women.
 Gamma Sigma Delta—Agriculture; men.
 Kappa Delta Pi—Education; men and women.
 Kappa Kappa Alpha—Art; men and women.
 Kappa Kappa Psi—Band; men.
 Mu Beta Beta—4-H club work; men and women.
 National Collegiate Players—Drama; men and women.
 Omicron Nu—Home economics; women.
 Phi Chi Theta—Commerce; women.
 Phi Kappa Phi—Scholastic; men and women.
 Phi Lambda Upsilon—Chemical engineering; men.
 Phi Tau Chi—Industrial arts; men.
 Rho Chi—Pharmacy; men and women.
 Scabbard and Blade—Military; men.
 Sigma Alpha—Physical education; men.
 Sigma Delta Chi—Journalistic; men.
 Sigma Delta Psi—Athletics; men.
 Sigma Tau—Engineering; men.
 Tau Beta Pi—Engineering; men.
 Theta Sigma Phi—Journalistic; women.
 Xi Sigma Pi—Forestry; men.

SKETCH OF OREGON STATE

In 1862 congress appropriated 90,000 acres of land to the state of Oregon, on condition that a state college should be in operation in 1867.

The destiny of Oregon State might have been changed had it not been for the generosity of the South Methodists in donating their church building as the first "Temple of Learning."

This simple old structure served as the entire college for many years, for in 1867 there were but 20 students registered.

In 1868 "Corvallis College" was designated as the State Agricultural college by the state legislature which definitely confirmed it as a national and state institution in 1885.

In 1887 Benton county gave 35 acres of land to insure the permanent location of the college at Corvallis, and in this same year the citizens of Benton county laid the cornerstone for the present administration building.

At this time only four courses were taught, agriculture, general science, mechanical arts, and household science.

In 1899 only a limited number of students could take advantage of gratuitous education, only one being chosen from each senatorial and representative district.

By way of comparison, the college has grown from four main courses with five instructors and 20 students in 1867, to 10 degree-granting schools including more than 60 departments, approximately 400 instructors and over 5000 students. Oregon State includes in its enrollment representatives from every county in Oregon, from 18 states, and from nine territories and foreign countries.

In accommodations the college has developed from one building and 35 acres of land in 1885, to 43 substantial buildings and 499 acres of land in 1930.

Perhaps the most important factor in the wonderful development of Oregon State is the fact that there have been but very few changes in the presidential chair. President Kerr has been president since 1907.

THE COLLEGE

The resident instruction division is but one of the three main divisions of college work. The other divisions include the research and the extension service.

Schools and Administration

President of the College	William Jasper Kerr
Agriculture	Dean A. B. Cordley
Basic Arts and Sciences	
	Dean M. Ellwood Smith
Commerce	Dean J. A. Bexell
Engineering	Dean H. S. Rogers
Forestry	Dean G. W. Peavy
Home Economics	Dean Ava B. Milam

Mines	Dean James H. Hance
Pharmacy	Dean Adolph Ziefle
Vocational Education	Dean J. R. Jewell
Music	Director Paul Petri
Commandant of Cadets	Col. H. R. Richmond
Dean of Women	Dr. Kate W. Jameson
Dean of Men	Dr. U. G. Dubach
Registrar	E. B. Lemon
Health and Physical Education	
.....	Dean C. V. Langton

Board of Higher Education

The general government of the college is vested primarily in the state board of higher education which supplants the old board of regents. Under its control are four other administrative bodies, the administrative council, the college council, the faculty, and the staffs of the experiment station and extension service.

The administrative council determines all questions dealing with policy and administration; the college council considers all matters pertaining to educational work, including courses, requirements for admission, and graduation; the college faculty considers questions of methods and discipline.

Members are: Hon. O. L. Starr, chairman; Hon. Aubrey R. Watzek, acting secretary; Hon. B. F. Irvine, treasurer; Hon. Herman Oliver; Hon. C. C. Colt, Hon. E. C. Sammons; Hon. Albert Burch; Hon. E. C. Pease; and Hon. F. E. Callister.

Alumni Association

About 1920 the alumni association was re-organized. Plans were worked out whereby a permanent secretary might head the work. Branch organizations were formed in all sections of the state, and the interest of the incoming graduates was enlisted. That efficient cooperation was secured is well proved by the effective way in which the alumni responded in the successful passage of the millage bill and in support of the Memorial Union fund.

Success in any line cannot be gained without financial support. Every graduate is given the opportunity to become a part of the organization in one of three ways: By paid up life member-

ship, life membership to be paid by installments, or by payment of yearly dues. In return he is given the right to active participation in the organization, a subscription to the "Oregon State Monthly," published monthly, and admission to the alumni luncheon and dance held each year during the Commencement week on the campus.

The alumni association is the medium by which Oregon State men and women keep in touch with their Alma Mater.

The board of directors of the alumni association is: Mark D. McCallister, president; Jeanette Cramer, vice-president; Clifford A. Dunn, treasurer; Edward C. Allworth, alumni secretary; Grant McMillan, alumni editor; Eunice Courtright, records clerk; and Cyril G. Brownell and Charles Reynolds, members.

THE MEMORIAL UNION

"The Memorial Union, dedicated to the service and inspiration of the living and to the memory of our immortal dead."

The Memorial Union is a student service building that houses various undergraduate activity groups and the alumni organization, supplies banquet and cafeteria rooms, fountain service, offers facilities for student body dances, has a stage for plays, houses the co-op store, has lounging rooms for faculty and students with special rooms for men and for women, has trophy rooms, and in general serves as a center for student life.

The Union has been made possible through contributions made by students, alumni, faculty, and other friends of the college. Costing more than a half million dollars, it stands as an example of classic magnificence in architecture, a silent tribute to our soldier dead, and a lasting inspiration to the living generation on the campus.

The idea for a memorial was first formed by a few students who, following the world war, sought some means by which the college could honor its war dead. The student union building was considered a more fitting memorial than a monument, since it would, through its

service, inspire and aid as well as remind.

Enthusiasm for the plan was immediately evidenced by students and alumni alike. Enthusiastic drives following the perfection of the architectural plans, drawn by an Oregon State alumnus, netted enough pledges to start construction. The site for the union was dedicated in 1926 and ground was broken for construction in the spring of 1927. The cornerstone was laid Alumni day, June 2, 1928.

The ground floor includes the ball room which has a stage at one end, so that the great room may be converted into a showhouse. It may also be used as a banquet hall for large assemblages. The kitchens, cafeteria, and fountain are all located on the ground floor.

The next is a mezzanine floor with a beauty parlor, checking, and rest rooms at the west end. The east end contains the co-op store, a barber shop, and a ticket office.

Above the mezzanine is the first or main floor which contains the main concourse, the central lounge room, with a smaller separate lounge for men students at the east end, and the lounge for women students at the west end. Various student, alumni, and building offices are also on this floor.

The second floor has trophy rooms and office rooms for various campus organizations. A balcony runs around three sides of the main lounge. At the west end is the women faculty lounge room.

Honor fraternities, publications, among which are the Daily Barometer, the Beaver, the Monthly, and the Directory, graduate manager's department, various clubs, athletic news bureau, Associated Women students, and alumni association are among the groups housed in the Union.

Executive control of the Memorial Union is vested in two boards. The board of governors has charge of finances and construction and is composed of four alumni, one regent, and two student members. The board of directors has charge of the building's activities. It is composed of four student members, one faculty, and one alumni member, and the graduate manager.

A general manager is appointed by the board

of governors. He is responsible for all financial affairs of the Memorial Union and the orderly management of the building, and has charge of all employees.

Board of Governors consists of Percy A. Cupper, '04, chairman; Eddy E. Wilson, '89; Roy R. Clark, '09; R. Earl Riley, '12; Martin Redding, '31; and another student member not yet selected.

Board of Directors consists of Martin Redding, president; George Knutsen, student body president; Hester Davis, student body secretary; Larry Warren, Barometer editor; Carl A. Lodell, '21, graduate manager; Jack F. Porter, '12, alumni member; and E. C. Allworth, '16, building manager.

THE ASSOCIATED STUDENTS

This is an organization of the entire student body working under a constitution and by-laws approved by the faculty, and having general authority over all student body enterprises. Officers are elected annually, nominations and elections being conducted in a manner similar to that of the state electorate. The officers consist of a president and secretary chosen from the senior class, and three vice-presidents, chosen one each from senior, junior, and sophomore classes. The president, first vice-president, secretary and senior and junior members of the board of control constitute the executive committee of the student body and have general supervision of all affairs of interest to the student body.

Student Body officers: George Knutsen, president; Ernest Woods, vice-president; Margaret Metcalf, second vice-president; Mark Briggs, third vice-president; Hester Davis, secretary; Walter Stokesbary, honor council; Martin Redding, president Memorial Union; Neville Huffman, greater O. S. C.; James Gibson, social chairman; Bob Christiansen, James Kincaid and Bob Burke, yell leaders.

Co-op Board: Charles Simpson, Tom Drynan, Lucille Van Loan, George Elden, Alling Goss, Howard Stevens, James Smillie, Dr. N. H. Comish, Dean G. W. Peavy.

Edward Efteland, homecoming chairman; Harvey Pease, point system chairman.

Bud Stark, Jerry Clark and Robert McCloskey pep committee.

Walter Mackey, Beaver manager; Porter Loomis, directory manager; Chas. Mack, Beaver editor; Lawrence Warren, Barometer editor.

Pan-Hellenic—Irene Griggs, president; Adelle Collier, secretary.

Inter-Fraternity Council—Z. Wayne Griffin, president; Bryan Williams, vice-president; Richard Stark, secretary-treasurer.

Spurs—Kay Wheeler, president; Virginia Prudhomme, vice-president; Fern Edwards, secretary; Sigrid Hystad, treasurer.

The Board of Control

The board of control consists of three faculty members appointed by the president of the college, one alumnus chosen by the alumni association, and five students who are the executive committee of the student body. The student body constitution vests in this board of control authority to supervise all student body interests entailing the expenditure of student body funds. They exercise functions in the main by the approval of budgets and schedules. The immediate supervision is exercised through a general manager appointed by the board of control. Members are:

George Knutsen, Ernest Woods, Hester Davis, Jay M. Reynolds, Dean A. B. Cordley, Wallace Kadderly, Dean G. W. Peavy, Lee Purdy, and Joe Mulligan.

The Student Interests Committee

The student interests committee is composed of the president of the Associated Students, editor of the Barometer, president of the Independent Student Council, president of the Interfraternity Council, president of Pan-Hellenic Council, president of the Associated Women students, the dean of women, the dean of men, chairman of the scholastic committee, chairman of the housing committee, and the director of physical education. This committee is designated to look after those interests of the students which are not strictly academic in character. It assists in working out student social problems. It helps

to maintain a wholesome relationship between clubs and fraternities and the college. It is prepared to assist student organizations in all their financial dealings. In short the committee strives to bring about those conditions which will make the student's college life of the greatest profit to him.

ASSOCIATED WOMEN STUDENTS OF OREGON STATE

This organization includes in its membership all women in the college. Organized in 1916, its purpose is to foster unity and cooperation among the women and to promote a spirit of democracy.

All campus organizations of which women are members are a part of the association and are represented on its governing body. The association aims to coordinate the work of these various organizations giving each a definite duty to perform, thus preventing duplication of effort.

Officers for this year are: Betty Robley, president; Billy Cupper, vice-president; Elizabeth Fletcher, secretary; Alice Fish, treasurer; and Grace Baird, sergeant-at-arms.

CLASS ORGANIZATION

Each class is fully organized with its class officers and its committees, the class dues, as provided in the constitution of the Associated Students, being a compulsory tax collected as part of the regular registration fee. The money so obtained is used to defray class expenses and to buy a gift for the college upon graduation of the class.

Officers are chosen by popular vote, each class voting for its own officers only. Those elected for this year include the following:

Senior class—Sid Hammond, president; Irene Griggs, vice-president; Mary Bennett, secretary; Carl Johnson, treasurer; George Duffield, sergeant-at-arms; and Virgil Dunkin, student council.

Junior class—Bert Taylor, president; Grace Baird, vice-president; Annabelle Grant, secre-

tary; John Deifell, treasurer; Joe Mulligan, sergeant-at-arms; Kenneth Fagans, campus week end chairman; and Moor Lyman and Jack Tostevin, student council.

Sophomore class—George Hanselman, president; Estora Ricks, vice-president; Ellen Stebinger, secretary; LeRoy Thomas, treasurer; Vincent Wood, sergeant-at-arms.

Freshman class officers are elected at the beginning of the year at the class meeting.

STUDENT PUBLICATIONS

The Oregon State Barometer

Larry Warren Editor
Bart Sjoblom Manager

In March 1896, the literary societies of the college began the publication of a monthly periodical, the "O. A. C. Barometer." The enterprise met with deserved success and "the organ of the studentbody" is now issued as a four-page seven-column daily except Sunday and Monday. It publishes the news of the college and is of general public importance as representing the interests, character, and accomplishments of the student body at the college. By action of the board of regents, resulting from a unanimous recommendation of the student body, a portion of the regular student body fee is devoted to the "Barometer," and every student regularly receives the paper.

The Beaver

Charles Mack Editor
Walter Mackey Manager

The annual publication of the student body made its initial appearance as "The Orange" in 1907. It is a beautiful publication, substantially bound, and fully illustrated with photo-engravings, pen-and-ink sketches, and line and wash drawings. It is a full-dress carnival of the year's life, representing the dignity, the beauty, the versatility, the gaiety, the traditions, the sentiment, and the solidarity of Oregon State college.

Oregon State Monthly

A. Lowell McMillan Editor
Edward C. Allworth Manager

This is a monthly periodical edited and issued by the general alumni association of Oregon State college. It contains the relatable news of the campus and of the alumni, and is a bond between the former and the latter. The office of the alumni secretary is at the college, the alumni secretary being the manager.

The Oregon State Technical Record

Delmar L. Brown Editor
Robert G. Misphey Manager

This is a quarterly magazine published by the Associated Engineers, devoted to engineering and mechanical arts. It is a member of Engineering College Magazines Associated, a national organization of technical publications. Its purposes are to record engineering progress in the Northwest; to furnish news; to publish records of scientific work done by students in this institution; and to publish any matter of special technical and scientific interest to civil, mining, chemical, mechanical, and electrical engineers, and others engaged in technical pursuits.

The Oregon State Directory

William H. Simmons Editor
Porter Loomis Manager

This magazine is published twice a year by the students of the school of commerce under the supervision of the faculty of the school, and is devoted to the commercial interests of the college and the state. The publication constitutes a complete directory of all the members of the institution—students, faculty, and employees.

The Annual Cruise

Albert Arnst Editor

This is an illustrated magazine published by the Forestry club. Its objects are to unite more closely the forestry and lumbering interests of the Pacific Northwest, to advance scientific forestry and lumbering, and to promote forest interests in every feasible way. Articles of technical value are contributed by members of the faculty and by graduates, experts in their respective fields of effort.

CAMPUS ORGANIZATIONS

The following is a list of campus organizations through which many of the various campus activities function: Advertising club, Agricultural club, American Institute of Electrical Engineers, Art club, American Society of Mechanical Engineers, American Society of Civil Engineers, Associated Engineers, Baptist club, Bernard Daly club, Chamber of Commerce, Charles Eliot club, college band, Chemical Engineering association, Cosmopolitan club, Dairy club, Filipino club, Forestry club, glee club, 4-H club, Home Economics club, Horticultural club, Industrial Arts club, Independent Student council, Interfraternity council, Masonic club, Miners club, Newman club, Madrigal club, college orchestra, Pan-Hellenic council, Pharmaceutical association, Polo club, Scrollers, Temenids, Triad club, Women's Athletic association, Wesley Foundation, Westminster association, Withycombe club, Women's Physical Education club.

HONOR PRIZES

The **Clara H. Waldo Prize** of \$140 is an award annually made in the proportions of \$50, \$40, \$30, and \$20, respectively, to the woman of highest standing registered as a regular student in one of the degree curricula in the senior, junior, sophomore, and freshman year.

Winners in 1929-30: Charlotte Martin, senior; Hester Davis, junior; Dorothy L. Anderson, sophomore; and Elizabeth M. Fletcher, freshman.

Benton County State Bank Prize of \$140 is an award annually made beginning with the year 1919-20 in the proportions of \$50, \$40, \$30, and \$20, respectively, to the man of highest standing registered as a regular student in one of the degree curricula in the senior, junior, sophomore, and freshman year.

In the distribution of the Waldo and Benton County State Bank prizes the committees having charge of the awards are guided by the following

points: (a) proficiency in scholarship; (b) success in student activities; (c) qualities of manhood or womanhood; (d) qualities of leadership.

Winners in 1929-30: George L. Boomer, senior; Neville G. Huffman, junior; Ernest R. Sears, sophomore; and Dixon Edwards, freshman.

The Joseph H. Albert Prize of \$25 is an award annually made to the senior student who is adjudged by a joint committee of faculty and students to have made the greatest progress toward the ideal of character, service, and wholesome influence.

Winner in 1929-30: Wilfrid E. Johnson.

The Mountain States Power Company Cup, offered by the Mountain States Power company, is a silver loving cup presented to the senior man who, during his entire college career, has maintained a high standard of scholarship and manhood and has excelled in athletics.

Winner in 1929-30: Carl Evart Gilmore.

The Jacob Reichart Prize. Through the generosity of Mr. Jacob Reichart, whose sons were prominent in debating while at the college, an award of \$25 is made annually to the student showing the greatest ability in forensics.

Winner in 1929-30: Siri Ann Enegren.

Oregon State Society of Certified Public Accountants Scholarship. For the purpose of stimulating the students in commerce to achieve the utmost in the study of accounting, the Oregon State Society of Certified Public Accountants offers an annual scholarship, consisting of books on accounting to the value of \$25. The faculty of the school of commerce designates the student most worthy of the award.

International Friendship Scholarship. The Home Economics club of the college on March 2, 1926, established an annual scholarship of \$500 to be given to a graduate foreign student to study home economics at Oregon State college. The recipient of the scholarship is selected by a committee composed of the executive council of the Home Economics club, the dean of the school of home economics, and a representative of Omicron Nu.

The **Adolphe Wolfe Prizes** of \$200 were established in 1927 for the purpose of promoting business scholarship and research. The award is made annually to the juniors and seniors in commerce who in the opinion of the commerce faculty give the greatest promise of business leadership. The award is divided into two or more prizes for men totalling \$100, and two or more prizes for women in like amount, according to the merits of the contestants. Participation in an essay contest under rules prescribed by a faculty committee is required of candidates for the award. In awarding the prizes, character, scholarship, participation in student activities, and qualities of leadership are considered.

The **Chi Omega Prize** is an annual award offered by Eta Alpha of Chi Omega to the senior woman who is adjudged by the college committee on honors and awards to approach most nearly an ideal of intellect and spirituality and to have exerted the most wholesome influence and inspiration upon her associates.

Winner 1929-30 was Amelia Grace Swanson.

The **E. D. Ressler Memorial**, given by the Oregon State Teachers association, is presented to the junior in vocational education, as approved by the committee on honors and awards, has made the best all-around record as an undergraduate.

Winner 1929-30 was L. Russell Mills.

Senior Honors are conferred upon outstanding students of the various schools and departments as judged by the administrative council. No more than 10 percent of the graduating class may be so honored. The required scholastic standing is 90 percent or higher.

The **Harry Holgate Prize** of \$25 is awarded annually to the freshman student who is outstanding in forensics.

Winner 1929-30 was Denver Garner.

The **Alpha Zeta Scholarship Cup**. This cup is awarded during the first term of each year to the student in agriculture receiving the highest grade average in the freshman class.

The **American Society of Civil Engineers Prizes**. Junior memberships in the A.S.C.E. are

awarded annually to the three students writing the best papers prepared for and delivered to the student branch of the society.

Winners 1929-30 were Max Johnson, A. F. Johnson, and Myer Samuels.

The American Society of Mechanical Engineers Prizes. These annual prizes, consisting of \$25, \$15 and \$10 are rewarded respectively to authors of the three best papers prepared for and delivered to the student branch of the society.

Winners were not selected for 1929-30.

The Mary J. L. McDonald Fellowship in Reforestation gives an opportunity to do advanced study to the student selected by a committee of the faculty as most deserving because of proficiency in forestry studies and of marked ability to do independent work. Graduation from a recognized school of forestry is a prerequisite.

Winner 1929-30 was Vondis Miller.

The Rho Chi Prize of \$10 is awarded annually to the freshman in pharmacy who, in the judgement of the Rho Chi society and the faculty in pharmacy, has been outstanding in scholarship and activities.

Winner 1929-30 was Gladys Minear.

The Kappa Delta Pi Award of \$25 is given annually to the sophomore in the school of vocational education who made the highest scholastic average during his freshman year.

Winners 1929-30 were Margaret Atwood and Elsie Pardee.

Research and Teaching Fellowships. These fellowships are open annually or biennially to graduate students, most of them combining teaching or research work with study for an advanced degree.

The Eta Kappa Nu Plaque is awarded annually to the outstanding sophomore in electrical engineering as judged by his character scholarship, and industry. The plaque has superseded the traditional Eta Kappa Nu loving cup which had previously been awarded upon the same basis. The winner for the class of 1932 is Raymond P. Scott.

The Omicron Nu Plaque is awarded each year to the senior woman who has best lived the teachings of home economics throughout her college career.

Winner 1929-30 was Gertrude Sick.

The Home Economics Freshman Award is presented to the outstanding freshman in home economics.

Winner 1929-30 was Elizabeth Fletcher.

The Drucilla Shepard Smith Prizes are awarded to the writers of the two best articles or series of articles published during the year by graduate or undergraduate students giving practical solutions to problems confronting women in rural homes.

The American Association of University Women Graduate Scholarship is awarded every three years to an Oregon woman holding at least a bachelor's degree, for advanced study at any American or foreign university, and consists of a sum of \$1200.

LOAN FUNDS

Student Loan Fund. Through the liberality of friends of the Oregon State college and through the accumulation of interest on loans, an irreducible student loan fund has been established. The purpose, as expressed by one of the donors, is "not to induce students to attend school by providing money that can be easily obtained, but rather to aid those who have determined to secure an education and are paying the cost wholly or in part from their own earnings."

The J. T. Apperson Agricultural College Educational Fund. By the will of Hon. J. T. Apperson, regent of the college since its foundation, a fund amounting to between \$55,000 and \$75,000 is to be a perpetual endowment, administered by the state land board of Oregon, for the assistance of worthy young men and women, "who are actually bona fide residents of the State of Oregon, and who would otherwise be unable to bear the expense of a college course at the Oregon Agricultural college." The income from this estate is to be loaned to students at a low rate of

interest. Applicants for the loan must be recommended to the state land board by the president of the college and the state superintendent of public instruction. Application is made through the office of the student loan fund.

The Masonic Educational Funds. The Grand Lodge of the state of Oregon has assigned \$2000 to a fund which may be used by needy sons and daughters of Master Masons. Loans from this fund are made at the discretion of the trustees of the Grand Lodge, upon recommendation of the president of the college and the approval of the master and wardens of the lodge at Corvallis. Loans to any one student may not exceed \$300 in a school year, subject to repayment in full or in installments at the borrowing student's earliest convenience.

The Grand Chapter of Royal Arch Masons of Oregon has established a loan fund of \$2500 jointly between Oregon State college and the University of Oregon for the sons or daughters of Royal Arch Masons of Oregon. Loans from this fund are obtained as described in the paragraph preceeding.

The Knights Templar have a national fund available for the aid of students in their junior and senior years. The student applying need not necessarily have Masonic affiliations as a prerequisite. Loans from this fund are obtained in the manner above described.

The Eastern Star Educational Fund. Loans are now available to students who are members or daughters of members of the Order of Eastern Star. Loans are made in amounts of not more than \$300 in a school year. Notes are for one year and are renewable at the pleasure of the worthy matron, and draw 4% interest. Loans are made upon honor, no security being asked, and will be made by the trustees of the grand lodge on the recommendation of the president of the institution the student is attending and the approval of the worthy matron and worthy patron of the chapter of the Order of the Eastern Star located in the same place as the institution of learning.

The Harmon Foundation Fund. This corpora-

tion of New York City, founded for the sake of assisting worthy self-supporting students in the last two years of their courses, assigned \$3000 yearly to the Oregon State college. This money is loaned under conditions novel to the foundation, perfectly protecting the principal, yet requiring no security from the student. Loans made under this fund must be repaid by regular payments begun not later than 12 months after graduation or the leaving of school.

The Simon Benson Fund. Simon Benson of Portland has placed \$2000 on deposit with the loan committee for the assistance of needy and worthy students. These funds are administered in the same manner employed of the other money of the regular student loan fund.

Bernard Daly Educational Fund. Under the terms of the will of the late Dr. Bernard Daly of Lakeview, Oregon, worthy self-supporting young men and women of Lake county may receive a part or all of their necessary college expenses. The terms of the will provide that the income from this fund be used to pay the college expense of at least 15 students each year. The fund is administered by a board of trustees who select candidates annually from a list of applicants recommended by the county judge and county school superintendent.

The Arthur Palmer Tift Memorial Loan Fund. By the will of Mrs. Joan Palmer Tift, practically her entire estate, estimated at from \$20,000 to \$30,000, is left as a permanent loan fund for deserving young men needing financial assistance while attending the Oregon State college. This fund is left as a memorial to her son, Arthur Palmer Tift, an attorney in Portland until the time of his death January 14, 1919. The fund is irreducible and all interest accruing therefrom is added to the foundation.

The Oregon State Pharmaceutical Association Educational Fund. The O. S. P. A. educational fund established by the Oregon State Pharmaceutical association at its thirty-sixth convention held in Corvallis during July 1925, is a fund to be used primarily in making loans to needy and deserving students of the Oregon State college

school of pharmacy. It may be used also, at the discretion of the trustees of the corporation, for endowing a pharmaceutical library or a chair of research or instruction in the school. The O. S. P. A. educational fund is maintained through subscription from Oregon druggists and other sources. On an average subscriptions are for \$100 each, payable in ten annual installments. John F. Allen, '95, of Corvallis, initiated the movement for the fund by making an initial contribution of \$1000. The fund now comprises nearly \$65,000. An effort is being made by the O. S. P. A., through subscription contributions extending over a period of 10 years, to raise an aggregate fund of \$100,000.

The Crawford Loan Fund. By the wills of the late Edward G. Crawford and his wife, Ida M. Crawford, a fund has been left in trust with the United States National Bank of Portland to assist worthy young men desiring to educate themselves. Applications for assistance under this will are made through the local loan office. Applicants must be nativeborn citizens of the United States, have attended primary school, either public or private, and have shown a desire and ability to help and educate themselves. This fund applies to students following any line of study with the exception of medicine, law, theology, pedagogy, and music.

The Joseph N. Teal Loan Fund. By bequest in his will the late Joseph N. Teal of Portland gave to the college \$5000 "to be administered as a perpetual revolving fund to be loaned . . . to worthy students pursuing courses of instruction in said college."

FIVE IDEALS

Work. Begin your work promptly. More than half the freshmen who fail, fail because they waste the first six weeks. Watch them closely.

Ideals of Work. Aim to excel in at least one study. A lower ideal than this is unworthy of a college man.

Help and Advice. Get in touch with some adviser, your instructor, or some other respons-

ible official to whom you may turn when in need of advice about your work. Do not run the risk of failure through ignorance of the rules.

Friends. Make friends by being one yourself. It is a tragedy to live an isolated life. There are important sides of your nature that cannot be developed except by healthy contact with your fellow students.

Character. Do not sacrifice or compromise the essentials of real character, whatever your change of belief or opinion. Remember that you are here to make "Character more efficient through knowledge."—F. W. Roe.

THE POINT SYSTEM

Harvey D. Pease

The activity point system has a two-fold purpose: to encourage scholarship and to widen student participation in activities.

Grades and activities are closely related. If too much time is devoted to extra-curricular affairs, scholarship suffers. Since the aim of the college is academic achievement, nothing must hinder the attainment of scholastic requirements. Student activities, therefore, must hold a position of secondary importance.

Oregon State is an institution of democratic principles. Its reputation for putting these principles to practice has won it an enviable position among the colleges. But lest these ideals be sacrificed, all student activities—the one big source of our spirit of fellowship and democracy—must be open to everyone. Activities, when carried prudently, have an important function in college life. Educators freely admit this. All alike are entitled to these benefits.

The work of the point system committee is to adjust the position of the few to that of the group. This is done by allotting to each activity a number of points based on a standard of 100 points, the maximum number of points to be carried by any one person. By limiting students to this maximum, higher scholarship and increased participation in student activities will follow.

The complete list of the student activities with the points allotted to each follows:

STUDENT BODY ORGANIZATIONS

President of Associated Students	100-100-100
First vice-president	50-50-50
Member of Board of Control	25-25-25
Member of Student Interest committee	20-20-20
Chairman of Greater O. S. C. com- mittee	50-0-75
Member of Greater O. S. C. com- mittee	25-0-40
Secretary of Greater O. S. C.	25-0-25
Chairman Point System committee	30-30-30
Chairman Honor System	50-50-50
Member Honor System	35-35-35
Chairman Memorial Union com- mittee	50-50-50
Member Memorial Union com- mittee	20-20-20
Chairman Social committee	25-25-25
Member Social committee	10-10-10
Member of Student Council	25-25-25
Chairman Pep committee	40-40-40
Member of Pep committee	25-25-25
Member of Board of Governors, Memorial Union	20-20-20
General chairman Homecoming	75-0-0
Assistant chairman Homecoming	35-0-0
Chairman of Homecoming com- mittee	35-0-0
Member of Homecoming com- mittee	20-0-0
Manager Exposition committee.....	0-75-0
Chairman Exposition committee	0-35-0
Member Exposition committee	0-20-0
Manager of Campus Week End....	0-0-75
Chairman of Campus Week End	0-0-35
Member of Campus Week End committee	0-0-20
Duke of Beaver Knights	50-50-50
Member Beaver Knights	25-25-25
Member of Beaver Guard	10-10-10
President Co-op Association	25-25-25
Secretary of Co-op Association	10-10-10
Treasurer of Co-op Association	10-10-10

CLASS OFFICERS

Senior, Junior, and Sophomore Classes

President	50-50-50
Sergeant-at-arms	15-15-15
Athletic Manager	15-15-15
Chairman standing committee	15-15-15
Member standing committee	10-10-10

Freshman Class

President	35-35-35
Sergeant-at-arms	15-15-15
Athletic manager	15-15-15
Yell leader	20-20-20
Chairman of bonfire committee	15-15-15
Chairman of standing committee	15-15-15
Member of standing committee	10-10-10

Chamber of Commerce

President	20-20-20
Vice-president	10-10-10
Treasurer	15-15-15

Ad Club

President	20-20-20
Manager	15-15-15
Member	10-10-10

CAMPUS PUBLICATIONS

Barometer

Editor-in-chief	100-100-100
Assistant editor	35-35-35
Associate editor	35-35-35
Day editor	35-35-35
Assistant day editor	25-25-25
Night editor	40-40-40
Assistant night editor	30-30-30
Assignment editor	30-30-30
Sports editor	45-45-45
Assistant sports editor	30-30-30
Systems manager	15-15-15
Feature editor	25-25-25
Humor editor	35-35-35
Editorial writers	20-20-20
Secretary	25-25-25
Minor staff members	20-20-20
Business manager	100-100-100
Advertising manager	60-60-60
Collections manager	40-40-40
National collections manager	25-25-25

Staff assistant	20-20-20
National advertising manager	30-30-30
Service department	10-10-10

Beaver

Editor-in-chief	100-100-100
Associate editor	40-40-40
Assistant editor	40-40-40
Department editor	40-40-40
Art editor	30-30-20
Assistant department editor	20-20-20
Secretary	25-25-25
Photographer	35-35-35
Manager	100-100-100
Assistant manager	45-45-35
Circulation manager	45-45-45
Business staff	20-20-20

Annual Cruise

Editor-in-chief	35-35-35
Associate editor	25-25-25
Editorial staff	10-10-10
Manager	30-30-30
Assistant business manager	20-20-20
Circulation manager	15-15-15
Advertising manager	15-15-15
Business staff	10-10-10

Oregon State Monthly

Associate editor	5-5-5
Campus news editor	25-25-25
Manuscript editor	25-25-25
Women's section editor	5-5-5
Department editor	5-5-5
Assistants	20-20-20
Advertising manager	40-40-40
Assistant circulation manager	5-5-0
Assistants	10-10-0
Staff salesmen	10-10-10

O. S. C. Directory

Editor-in-chief	50-50-0
Department head	30-30-0
Assistant department head	20-20-0
Manager	50-50-0
Managerial staff	20-20-0
Advertising manager	25-25-0
Circulation manager	20-20-0
Business staff	15-15-0
Collections	20-20-0
Circulation staff	10-10-0

Oregon State Technical Record

Editor-in-chief	50-50-50
Associate editor	25-25-25
Editorial staff	10-10-10
Manager	40-40-40
Managerial staff	15-15-15
Circulation manager	15-15-15
Advertising manager	25-25-25
Business staff	10-10-10

SOCIAL FUNCTIONS**Military Ball**

General chairman	0-25-10
Chairman of subcommittee	0-15-5
Member of subcommittees	0-10-5

Senior Formal

General chairman	0-25-25
Assistant chairman	0-20-20
Chairman of subcommittee	0-15-15
Member of subcommittee	0-10-10

Junior Prom

General chairman	0-40-0
Chairman subcommittee	0-15-0
Member subcommittee	0-15-0

Sophomore Cotillion

General chairman	10-30-0
Chairman subcommittee	0-25-0
Member subcommittee	0-15-0

Rook Dance

General chairman	25-0-0
Chairman subcommittee	15-0-0
Member subcommittee	10-0-0

ATHLETICS

Varsity football	75-0-25
Varsity basketball	25-75-0
Varsity baseball	0-0-75
Varsity track	0-0-50
Rook football	50-0-25
Rook basketball	25-50-0
Rook baseball	0-0-50
Cross country	0-0-40
Tennis	0-0-40
Polo	40-40-40
Swimming	0-25-25
Rowing	0-0-40

Sports Managers

Football varsity manager	75-0-0
Basketball varsity manager	0-75-0
Baseball varsity manager	0-0-75
Assistant football manager	40-0-0
Assistant basketball manager	0-40-0
Assistant baseball manager	0-0-40
Rook football manager	50-0-0
Rook basketball manager	0-50-0
Rook baseball manager	0-0-50

HONORARY ORGANIZATIONS

President	20-20-20
Vice-president	10-10-10
Secretary	15-15-15
Treasurer	15-15-15
President of Inter-Honorary Council	15-15-15
Secretary-treasurer of Inter-Honor- ary Council	10-10-10

SOCIAL ORGANIZATIONS**Fraternities**

President	30-30-30
Vice-president	10-10-10
Manager	25-25-25
Assistant manager	15-15-15
Treasurer	10-10-10
Secretary	15-15-15

Interfraternity Council

President	35-35-35
Secretary	15-15-15

Clubs

President	30-30-30
Vice-president	10-10-10
Secretary	15-15-15
Treasurer	10-10-10
Councilman	15-15-15
Social chairman	15-15-15

Inter-Hall Council

President	20-20-20
Secretary	10-10-10
Social chairman	15-15-15

Independent Student Council

President	35-35-35
Member	15-15-15

MUSIC

Glee Club, Madrigal Club, and Orchestra

Officer	30-30-30
Member	25-25-25

Band

Officer	15-15-15
Member	10-10-10

DRAMATICS

National Collegiate Players

President	30-30-30
Secretary-treasurer	10-10-10
Leading role in play	30-30-30
Minor role in play	15-15-15

Forensics

Varsity orator	30-30-30
Varsity debater	30-30-30
Rook debater	25-25-25
Intramural debater	10-10-10
Varsity manager	50-50-50
Assistant varsity manager	25-25-25
Rook debate manager	35-35-35
Intramural debate manager	15-15-15

GENERAL ORGANIZATIONS

Points are awarded as follows: President, 10-10-10; Secretary, 10-10-10; Treasurer, 5-5-5.

Art club, Associated Engineers, American Military Engineers, American Institute of Electrical Engineers, Charles Eliot club, Cosmopolitan club, Daly club, Forensic club, Filipino club, Four-H club, Hindustan club, Lyceum club, Masonic club, Miner's club, Minor "O" association, Newman club, Polo club, Rifle club, and Forestry club.

Beaver rooters are sportsmen in the true sense of the word. Courtesy to their opponents is a practice of many years standing.

The college health service is just south of the administration building. Medical attention is free to students.

CONSTITUTION OF THE ASSOCIATED
STUDENTS OF THE OREGON
STATE COLLEGE

ARTICLE I

Section 1. This organization shall be known as The Associated Students of Oregon State Agricultural college.

Sec. 2. It shall consist of all undergraduate students who have duly registered in compliance with the rules of the college.

ARTICLE II

Officers and Their Duties

Section 1. The officers shall consist of president, three vice-presidents, and a secretary, who as a whole shall constitute an executive committee, and a yell leader.

Sec. 2. The president and secretary shall be elected from the senior class; one vice-president shall be chosen from each of the senior, junior, and sophomore classes, respectively. All officers shall be duly qualified students of the Oregon State Agricultural college, registered in a four-year degree course. No student shall be eligible to election or appointment to any student office until the name of the candidate has been certified to by the registrar's office as eligible to such honors according to college regulation.

Sec. 3. The president shall preside at all meetings, shall be ex-officio member and chairman of the executive committee, and shall execute other duties which may be incumbent upon a presiding officer.

Sec. 4. The vice-presidents shall discharge the duties of the president in his absence in the following order: from the senior, junior, and sophomore classes.

Sec. 5. The secretary shall keep a record of all meetings of the organization and of the executive committee, and at the close of the school year shall file records with the general manager of student activities.

Sec. 6. The executive committee shall require all officers to comply with the provisions of this

constitution; have charge of all elections; see that all candidates for student offices are qualified; fill all vacancies in office, unless a petition bearing 250 signatures shall be presented calling for a special election within 10 days after the office has publicly been declared vacant; and at all times consider the welfare of the Associated Students.

Sec. 7. (a) The Greater Oregon State committee shall consist of three members, one woman and two men, who shall be elected annually from the two upper classes of the Associated Students at the regular student assembly elections. The chairman of the committee shall be the man receiving the highest number of votes.

(b) The Greater Oregon State committee shall formulate plans and decide upon policies, which have as their objective the general promotion of Oregon State Agricultural college.

(c) Upon recommendation of the Greater Oregon State committee, the executive committee of the Associated Students shall have power to appropriate from the general assembly funds, not otherwise appropriated, such amounts as may be deemed necessary for carrying on the work of the Greater Oregon State committee.

Sec. 8. The term of office of all Associated Student officers shall be one year, commencing upon the day of installation. The newly elected officers shall be installed at the meeting within 15 days following election.

ARTICLE II-a

Women's Organizations

Section 1. All matters of particular interest to women, not provided for in this constitution, shall be controlled by the Associated Women Students.

ARTICLE III

Elections

Section 1. All candidates for the elective officers of the Associated Students and its various divisions hereinafter specified, shall be nominated at a regular meeting held within the last 15 days of April. Any other qualified student may become a candidate for office, provided he pre-

sents a petition bearing the signatures of 100 bona fide students at least four days prior to election day.

Sec. 2. The general election shall be held Wednesday afternoon of the week following nomination or before the following Saturday. The date is to be determined by the executive committee.

Sec. 3. The balloting shall be held according to the Australian ballot system.

Sec. 4. All undergraduate members of the organization shall be allowed to vote.

Sec. 5. Polls shall be open from 1:00 p. m. to 6:15 p. m.

Sec. 6. All officers shall be elected by a plurality vote; in case of a tie the election shall be decided by the executive committee.

Sec. 7. Election shall be made with reference to the prospective classes of the candidate; i.e., for an office to be held by a junior, choice shall be made at the regular election from those students who will the following year be qualified members of the junior class, as certified by the registrar.

Sec. 8. Yell Leader Elections. (a) The yell leader shall conduct a course in yell leading tactics at the start of the winter quarter. All underclassmen will be eligible for this course.

(b) The class of sophomores shall be given opportunity to try out at basketball games, track meets, and rallies, until one month before general elections, at which time the squad shall be cut to six by a committee consisting of the yell leader, his two assistants, and the chairman of the Rally committee. This cut must be approved by the executive committee before it shall become valid.

(c) These six names shall automatically appear on the ballot at the general election. The two receiving the plurality vote shall be the assistant yell leaders for the ensuing year. The third highest shall act as alternate.

(d) The names of the two assistants shall automatically appear on the ballot at the general election. One of these two shall be elected yell leader. If the incumbent yell leader is to be in

college for the whole of the following year he may petition the executive committee for the right to have his name placed on the ballot.

(e) Only male members of the Associated Students are entitled to vote for the yell leader or assistant yell leaders.

(f) Any person having had previous yell leading experience in a college or university and who will be at Oregon State for the following two years, may petition the executive committee for special permission to run for the office of assistant yell leader.

(g) This section shall take effect immediately except that the executive committee shall have the power to make such exceptions as are necessary to put the system in working order and to keep it so.

ARTICLE IV

Meetings

Section 1. Regular meetings of this organization shall be held on a Wednesday of October and on a Wednesday of each succeeding month of the college year.

Sec. 2. The president shall call a meeting of the Associated Students at his discretion, request of the executive committee, or on written request of at least 200 students, provided they have stated the object of the desired meeting.

Sec. 3. The call of each meeting shall be announced by the president by publication in the Barometer.

Sec. 4. Two hundred and fifty shall constitute a quorum of the Associated Students.

ARTICLE V

General Manager

Section 1. A general manager of student activities shall be chosen by the board of control, preference being given graduates of the college.

Sec. 2. The general manager shall have supervision of the finances of all divisions of student activities, and shall have charge of and account for all property of the association. He shall also have charge of facsimilies of all emblems, medals, awards, etc., of the various divisions of student activities.

ARTICLE VI

Board of Control

Section 1. The president of the Associated Students, the first vice-president, the secretary, and two men members elected within the last 15 days in January, one from the sophomore class and one from the junior class, three faculty members appointed by the president of the college, and an alumnus appointed by the board of directors of the Alumni Association, shall constitute a board of control. They shall be chosen annually. The president of the college shall be an ex-officio member.

Sec. 2. The officers of the board shall be chosen by members of the board. There shall be a president chosen from the faculty members, and a secretary chosen from the student members.

Sec. 3. The board of control shall meet at least once each month, and also at the call of the president of the board, or at the call of a majority of the members.

Sec. 4. The board of control shall approve all budgets made by respective divisions of college activities and provide for an expert audit of the accounts of each division of student activities semi-annually.

Sec. 5. The board of control shall approve all schedules of all divisions of student activities, and shall approve and grant all emblems or special awards.

Sec. 6. The board of control shall appoint the managers of various student activities. They shall be governed by the qualifications required of elective student officers. The board of control may require bond wherever deemed necessary. They shall elect delegates to the Northwest and Pacific Coast athletic conferences.

Sec. 7. Any act of the board of control may be modified or rejected by a majority vote of the Associated Students at any regular meeting; provided the matter upon which action is taken shall have been presented for consideration at the regular meeting of the Associated Students next previous to the one during which action is

taken; and provided, that a written petition of one-third the members of the Associated Students shall be required to bring such a matter before the association.

ARTICLE VII

Funds

Section 1. The funds consist of receipts of all functions of the respective divisions of the Associated Students. A fee of \$15.00 per student per year shall be collected, \$5.00 at the beginning of each quarter. All funds shall be deposited in the business office.

Sec. 2. On or before one month before the end of the third term each year, the head of each division, or sub-division thereof, of student activities shall prepare a budget for the ensuing year in conference with the general manager. All budgets shall be approved by the board of control before going into effect. In case of disagreement between the manager of the division, or sub-division thereof, and the general manager, appeal shall lie to the board of control.

Sec. 3. No division shall draw on its funds except by requisition approved by the general manager.

Sec. 4. The managers of the respective divisions shall keep accurate accounts of the business of their divisions under the supervision of the general manager.

Sec. 5. Reports of financial condition of each division shall be rendered to the board of control at the end of each term by the manager.

Sec. 6. Unused funds shall remain in their respective departments.

Sec. 7. In consideration of the payment of the Associated Students fee of \$5.00 per term, the student shall be entitled to the following privileges:

(1) Subscription to the Oregon State Daily Barometer.

(2) Admission to all athletic events held on the college campus in which college teams are represented, with the following exceptions: (a) contests in addition to regular schedule. (b)

Northwest and Pacific Coast intercollegiate field and track meet.

(3) Admission to the annual concerts held on the campus by the following musical organizations: band, orchestra, Madrigal club, glee club, and mandolin club, including joint concerts by two or more of these organizations.

(4) Admission to all debating and oratorical contests held on the campus in which college students participate.

(5) Admission to all numbers of the college lyceum course.

(6) To all other rights and privileges as a member of the Associated Students of Oregon State college.

Sec. 8. The division of the Associated Student fee among the various departments of student activities shall be determined by the board of control.

Sec. 9. Class dues in amounts of 30 cents for freshmen, 50 cents for sophomores, 75 cents for juniors, and \$1.00 for seniors, per term, shall be a compulsory tax and collected as part of the regular registration fee.

ARTICLE VIII

Intercollegiate Athletics

Section 1. The faculty members of the department shall control the affairs of the department subject to the provisions of the constitution in Article V. section 2; Article VI, sections 4, 5, and 6; and Article VII.

Sec. 2. The general manager shall fix the price of admission to all games and contests. Appeal in all cases shall lie to the board of control.

Sec. 3. The captain of the respective teams shall be elected by the members of the team concerned within 10 days after the last game played by that team. Only those men who have satisfied requirements for their letter, during the season just closed, are qualified to vote.

Sec. 4. The board of control shall award and authorize the purchase of all emblems of athletic teams as provided in this constitution.

Sec 5. The official emblem of each sport shall be the orange block "O," which shall be mounted upon a black sweater. The official emblem shall be 7 by 5 inches outside dimensions, and $5\frac{1}{2}$ by 2 inches inside dimensions. Captains shall wear a gold star $1\frac{1}{2}$ inches in diameter, placed below the stripes on the sleeve of the sweater. Emblems of other sizes than those specified shall not be worn.

Major Sports for Men

Part 1. FOOTBALL. Any man playing 60 minutes in conference games or against teams of equal rank, and participating in two such games shall be awarded the official emblem.

Part 2. TRACK. Any man making five points in any one season in dual or triangular meets in which conference teams, or teams of equal rank, participate, or three points in the dual meet with Oregon, or one point in a Northwest Conference or Pacific Coast Intercollegiate association meet, or running on a winning relay team in a meet in which five institutions of equal rank are entered, shall be awarded the official emblem.

Part 3. BASKETBALL. Any man playing at least 10 minutes in each of one-fourth of the total number of halves of conference games, shall be awarded the official emblem.

Part 4. BASEBALL. Any man pitching one-fifth of the total innings against conference teams, or playing one-third of the total innings in any other position, shall be awarded the official emblem.

Part 5. The yell leader shall be awarded a black sweater upon which is mounted the yell leader emblem.

Part 6. Any man breaking a college record shall be awarded a gold medal.

Part 7. Any man winning the official emblem for three years in any one branch of recognized sport, or one letter in each of three recognized sports, shall, upon graduation, receive this official badge of special honor: a blanket of college colors, measuring 5 feet by 6 feet, bearing on it the official emblem in a size measuring 12 inches high by $10\frac{1}{2}$ inches wide, outside dimensions, and inside dimensions to correspond.

Part 8. Freshmen meeting the requirements for major sports shall be awarded complete class numbers not to exceed 4 inches in height.

Part 9. At the recommendation of the coach, the student manager, and the graduate manager, the board of control may award the official emblem to any man who has distinguished himself in a major sport, without qualifying for an award.

Minor Sports for Men

Sec. 6. The board of control shall have power to recognize minor sports.

Sec. 7. The official emblem for minor sports for men shall be the orange block "O" in an orange circle, which shall be mounted on a black jersey. The circle of this emblem shall have the following dimensions: outside diameter $7\frac{1}{2}$ inches, inside diameter $6\frac{1}{2}$ inches. The block "O" shall be $5\frac{1}{2}$ inches by $4\frac{1}{2}$ inches outside, and $2\frac{1}{2}$ inches by $1\frac{1}{2}$ inches inside.

Sec. 8. A regulation block "O" shall be presented to any minor sport man who, in the opinion of the board of control, distinguishes himself in national or international competition.

Sports for Women

Sec. 9. Any woman student fulfilling the athletic requirements set forth by the Women's Athletic association, shall be awarded the official emblem on approval of the board of control.

(a) The official emblem shall be an orange "O," a replica of which is on file in the office of the graduate manager, the "O" to be mounted on a regulation white sweater.

ARTICLE XI

Publications

Section 1. This division shall include the student publications: i. e., the Oregon State Daily Barometer, the Beaver, the Oregon State Technical Record, the Oregon State Directory, and the Oregon Countryman.

Sec. 2. The board of control shall appoint the business managers of these publications as provided in Article VI, section 6. The editor of the Daily Barometer shall be chosen by a board of control consisting of three faculty members and four students. The Associated Students shall

elect the editor of the Beaver, who at the time of nomination shall be a member of either the sophomore or junior class. The editor of the Beaver shall be elected, together with the two board of control members, during the last 15 days of January.

Sec. 3. The editors shall in each case appoint necessary assistants and outline their duties. The editors shall be responsible for all matter printed in their respective publications.

Sec. 4. The business managers of the respective publications shall have charge of the advertising, printing, and circulation. The general manager shall supervise the work and accounts of the managers.

Sec. 5. The manager of each publication shall present an itemized statement of his accounts to the board of control each term.

Sec. 6. All salaries and other fixed expenses in conducting student publications shall be determined by the board of control.

ARTICLE X

Forensic

Section 1. This division shall have immediate charge of all local, intercollegiate, and interscholastic contests subject to the provisions in Article V, section 2; and Article VI, sections 5 and 6.

Sec. 2. The manager of forensics shall be chosen as provided in Article VI, section 6. The coach of oratory and debate and the general manager shall prescribe his duties.

Sec. 3. The forensic division may provide such other officers as seem desirable, to be chosen by the members of the organization.

Sec. 4. Each student representing this college in an intercollegiate debating or oratorical contest authorized by the board of control shall be awarded an official forensic emblem as follows:

(a) The official forensic emblem for the first contest in which a student represents the college shall consist of a fine knitted sweater coat on which is mounted a scroll of black felt with an orange colored monogram of the letters "O," "S," and "C," approximately 4 by 5 inches in size, and smaller "D" or "O" mounted at the

lower right hand part of the monogram according to the contest, debating or oratorical, in which the contestant shall have represented the college.

(b) The official emblem for the second contest in which a student represents this college shall consist of the official forensic emblem adopted in 1912-1913.

(c) The official emblem for the third and successive contest in which a student represents this college shall be a choice of either official award that the student earning the award shall designate.

Sec. 5. Students representing the college in an intercollegiate oratorical or debating contest for three consecutive years shall receive a gold ring, the official emblem adopted in 1915.

ARTICLE XI

Department of Student Entertainment

Section 1. The lyceum course, the various musical organizations, and the Collegiate Players constitute this division.

Sec. 2. The board of control shall choose the managers of the organizations as provided in Article VI, section 6. The musical organizations and Collegiate Players may choose such other officers as seem desirable to them, and outline their duties.

Sec. 3. The general manager shall have charge of the lyceum course under the supervision of the board of control.

ARTICLE XII

Men's Council

Section 1. The division of student discipline shall be in the immediate charge of a student council composed of 10 members, five of whom shall be seniors, three juniors, and two sophomores. The three class presidents, the president and first vice-president of the Associated Students, and the editor of the Barometer shall become members of the council by virtue of their respective offices. One senior, two juniors, and one sophomores shall be elected by their respective classes at their regular class elections.

(a) All vacancies occurring during the year

shall be filled by the council from the classes in which said vacancies may occur.

(b) A majority of the members shall constitute a quorum.

(c) The council shall have the power to elect such officers as it may deem necessary.

(d) The council shall have the power to enforce all regulations regarding student discipline.

(e) The recommendations of the council shall be referred to the president of the college for final action.

Women's Council

Sec. 2. The division of student discipline for women shall be in immediate charge of a women's council, composed of seven members, consisting of: the secretary of the Associated Students, the president of the Associated Women Students, the vice-presidents of the senior, junior, and sophomore classes, and two representatives, one from the Greater Hall committee, and one from the Pan-Hellenic council, each elected by their respective organizations.

(a) A majority of the members shall constitute a quorum.

(b) The council shall have the power to elect such officers as it may deem necessary.

(c) This council shall have power to enforce all regulations regarding women students.

(d) The recommendations of the council shall be referred to the dean of women for final action.

NOTE — The following sections, adopted last year, supercede Article XV.

Honor Council

Sec. 3. It shall be the purpose of this section to provide a means of student and faculty cooperation in fostering and maintaining a high standard of honesty in academic work among all students of the college. Every student, from the moment of his matriculation, assumes the definite responsibility to exercise absolute candor and honesty in all academic relations with his fellow students and members of the faculty. There is hereby created an Honor Council, composed of: a **senior**, who shall be chairman and who shall be appointed by the executive

committee of the Associated Students from a list of nominations not exceeding five made by a committee of seven composed of two members of the men's council, appointed by the chairman of the men's council, two members of the women's council, appointed by the chairman of the women's council, and the retiring chairman and two members of the honor council appointed by him; a senior man and a senior woman appointed by the executive committee of the Associated Students from a list of not exceeding three men and three women, nominated by the interhonorary council; a junior man and a junior woman appointed by the executive committee of the Associated Students from a list not exceeding three men and three women nominated by the executive committee of the junior class; and two members of the faculty appointed by the President of the College. All selections for the year following shall be made in the spring before the close of the current college year, by the newly organized nominating and appointing bodies, with the exception of the nominating members from the retiring Honor Council.

(a) The Honor Council shall have the express responsibility of promoting a spirit of honor and of checking conditions inimical to honorable practice; any complaint of students or faculty regarding practices or conditions within the institution which are thought to be a menace to the honor spirit and privilege, may be addressed to the Honor Council at any time.

(b) The Honor Council shall select from its own membership a secretary, who shall keep a permanent record of all meetings of the council, and a historian, who shall compile and preserve all published items of interest to the Council.

(c) In general, the administration of the classroom and the preparation of class work is recognized as an inalienable responsibility of the instructor, but the cooperation of the students in the class in promoting the spirit of honor and in eliminating dishonesty, is essential and shall be invited and fostered by him.

(d) Any violation of the recognized standards of honor may be reported to the Honor Council by the instructor or by any students; such report

shall be made on printed forms provided for that purpose.

Honor Court

Sec. 4. The Honor Court, organized by the Honor Council, shall try all cases of violation of the practice of honor and in accordance with paragraph (j) of this section, shall return a verdict of "guilty" or "not guilty."

(a) One faculty member of the council, so designated by the President of the College, shall be judge of the court; in his absence the other shall act.

(b) The chairman of the Honor Council, or a student member of the council designated by him, shall be the spokesman for the council in any trial, and it shall be his duty to present the case to the court.

(c) When a case of violation is officially reported, the council shall select a jury and otherwise provide for a hearing of the accused, before the expiration of five school days as designated by the college calendar.

(d) A jury panel of seven shall be selected from those students registered as juniors or seniors, who have been declared eligible for jury duty by the Honor Council. At the opening of each college year the Honor Council shall select a group of juniors and seniors whom it recommends for jury service. All regularly enrolled students so selected are subject to jury duty, but may be excused from such service at the discretion of the Honor Council.

(e) A juror is not eligible to serve if a member of a social fraternity of which the accused is also a member, or if objectionable to the accused, but the accused shall not eliminate more than three suggested jurors in any trial.

(f) The accused shall be notified in each case to appear before the council and enter a plea, but in case he fails to appear or to submit acceptable explanation, he is automatically suspended from the institution.

(g) The accused may plead his own case, or he may be defended by any regularly enrolled student or member of the faculty selected by him.

(h) A vote of at least five members of the jury shall be required for a decision of "guilty."

(i) The duties of the judge of the court shall be to instruct the jury, to see that the trial is properly conducted, and to keep permanent records of all court proceedings. To accomplish the last, he shall designate a competent stenographer who shall be the court recorder.

(j) Violations of the honor practice shall be classified under five divisions as follows:

(1) Not giving or receiving assistance, but conducting oneself in such a way as to bring suspicion or to break down the spirit of honor.

(2) Willful, although not pre-meditated violation, such as copying due to surrounding circumstances.

(3) Pre-meditated violation, such as plagiarism or handing in work prepared by another.

(4) Pre-meditated violation, such as bringing to the examination notes or material with the intention of using the same.

(5) Violation after previous conviction upon (2), (3), or (4) above.

(k) The penalties imposed upon the accused found guilty upon one or more of the above enumerated offenses shall be respectively fixed as follows:

(1) Guilty under violation (1): Warning and reprimand from the judge of the court.

(2) Guilty under violation (2): Failure in the course with the requirement of repeating the same the next term offered.

(3) Guilty under violation (3): Failure in the course and publication of the name of the violator.

(4) Guilty under violation (4): Failure in the course and suspension from the institution for a period of one term.

(5) Guilty under violation (5): Failure in the course and suspension from the institution for a period of one or more terms.

(1) The findings of the jury shall be reported to the judge in open court, and by him certified to the council.

(m) The council shall impose the penalty and notify the accused; it shall also file a complete report of the proceedings in the registrar's office.

ARTICLE XIII

Memorial Union Building

Section 1. A fee of \$3.00 per student per term shall be collected at the time of registration to be applied to a fund for constructing a Memorial Union building. All funds shall be deposited in the business office. The board of governors of the Memorial Union building and the board of regents of the college shall have control of these funds.

Board of Directors

Sec. 2. The board of directors shall consist of: the president of the Memorial Union, a student to be elected by the Associated Students; the president of the Associated Students; the editor of the Barometer; the general manager of student activities; an alumnus to be appointed by the board of directors of the Alumni Association; and a member of the faculty to be appointed by the president of the college.

Sec. 3. The board of directors, except as here-in otherwise provided, shall have full power to supervise and control all activities of the Memorial Union. It may prescribe rules and regulations not inconsistent with the constitution to govern all Memorial Union activities, to govern the time and place for its own meetings, and to govern members and guests while in the Memorial Union building. It may determine by an affirmative vote of not less than five of its members when and for how long, by reason of violation of rules or regulations by a member, he shall be suspended or expelled or refused the privileges of the Memorial Union or any participation in Memorial Union activities; and it shall have power to enforce its determination. Before any such determination, the secretary shall send to the member a statement of the charges preferred against him, and, on his prompt request, he shall be granted a hearing before the board of directors or a committee thereof. It may also determine by a like vote when any such member shall be reinstated. It may fill vacancies in the membership in offices of the Memorial Union held by students. This board shall have power to appoint all standing committees and all other authorized

committees. This board shall submit a financial budget for the ensuing year to the board of governors for approval not later than April 15.

Board of Governors

Sec. 4. The board of governors shall consist of: the president of the Union and student to be appointed by the executive committee of the Associated Students; one regent of the college to be appointed by the board of regents; and four members of the Union, three of whom shall be alumni, to be appointed by the board of directors of the alumni association, to serve respectively one, two, three, and four years, for the first appointment, and thereafter for terms of four years each, and until their successors appointed in the same manner accept office. The terms of members of the board of governors shall end on June 30.

Sec. 5. The board of governors shall have full control over all financial matters connected with the Memorial Union, including power to borrow money from time to time and authorize the giving of the Memorial Union's obligations, signed and secured in such manner and payable at such times as the board of governors shall determine; power to authorize a conveyance of all the property of the Memorial Union to the board of regents of the college on such stipulations and conditions as the board of governors may prescribe; power to appoint, discharge, and direct a general manager and fix his compensation; power to fill vacancies in its own membership caused by death, resignation, ineligibility, or disability, the persons selected to serve until the vacancies shall be filled by the authorities designated in section 4 of this article, or until the disability shall have been removed, and power on the affirmative vote of not less than five of its members, to veto and thereby nullify any action of the board of directors which such members shall declare in a resolution to be, in their opinion, contrary to sound financial policy. It shall be the duty of this board to approve or disapprove a budget submitted for the board of directors not later than April 15 for the next year beginning July 1.

ARTICLE XIV

The Point System

Section 1. A limit shall be placed upon the number of student activities carried by any student. This is to insure to every activity the necessary time and attention of the student who is responsible, either by his own choice or by election, for carrying it on, and to prevent a student from burdening himself with activities to the detriment of his scholarship.

Sec. 2. Student activities as here used shall refer to all offices, teams, societies, and organizations fully recognized by the student affairs committee or the executive committee of the Associated Students.

Sec. 3. Points shall be allotted to each activity. These points shall be based upon the time involved and work required. The executive committee shall allot the points, shall submit the first list for publication in the Barometer at least once during the first month of the fall term, and shall keep the list on file at all times in the student assembly office. After publication of the first list a four-fifths vote of the executive committee shall be necessary to change the allotment of points.

Sec. 4. An officer, known as the point system chairman, shall be selected from the senior class by the executive committee, with the approval of the student interests committee, to enforce the provisions of this article. He shall serve concurrently with the executive committee that appoints him. A unanimous vote of the executive committee, approved by the student interests committee, shall be required to remove him.

Sec. 5. Each student participating in any student activity shall within 10 days of the date of entering the activity report the following information to the point chairman: Name, class, address, telephone number, course carried in college, number of credits, and activity. If he fails to report within 10 days after date of entering activity he will forfeit all right to participate in the activity. Vacations shall not be construed as the time elapsed.

Sec. 6. The point system chairman may ap-

point assistants. He shall be provided with a desk in the student assembly office. Appeals may be taken from his decisions to the executive committee, but must receive four-fifths vote to be reversed or modified. Further appeals may be taken from the decision of the executive committee to the student interests committee, whose decision will be final.

Sec. 8. The secretaries of all organizations shall submit to the point system committee a complete list of all offices and officers of their respective organizations, or any change in officers or offices within 10 days after installation of said officers or change in officers.

Sec. 9. Failure to comply with section 8 shall result in a fine of \$5.00 to be paid by the organization for each offense committed.

Sec. 10. It shall be held contrary to regulation for any student to acquire more than 100 points in any one year, with the following exceptions:

(a) President and first vice-president of the Associated Students and editor of the Barometer who shall be permitted to act on committees required by the constitution.

(b) Members of athletic teams who earn over the allowed number of points by participation in athletic events.

(c) Students whose appeals to the student interests committee are sustained by the committee.

ARTICLE XV

The Honor System

NOTE: This article is superceded by sections 3, 4, and 5 of Article XII.

ARTICLE XVI

Amendments and Miscellaneous

Section 1. Any article or section of this constitution or by-laws may be amended by a majority vote of the members (active) of the Associated Students at any meeting; provided, that the proposed amendment shall have been presented to the executive council for approval, and shall have been approved by such committee, and shall have been presented by it at a meeting at

least 10 days prior to the time at which it is to be voted upon. Should the executive committee fail to present the proposed amendment, as above provided, within 30 days of its receipt of such proposed amendment, then such proposed amendment may, by a written petition of one-third of the members of the Associated Students, be presented for adoption at any meeting; provided, that the final vote upon such proposed amendment be not taken earlier than at the next regular meeting after the presentation. In no case shall an amendment become operative until sanctioned by the president of the college.

Sec. 2. The Associated Students shall observe Robert's Rules of Order in the conduct of meetings.

Student Manager System

Sec. 3. For each of the major sports there is a senior manager who holds office for one year. This man is selected on the basis of elimination after service of two years in the capacity of assistant during his sophomore and junior years. The number of sophomore and junior assistants will be determined by the graduate manager in accordance with the needs of the sport. From the juniors there is one senior elected to manage that particular sport. His duties vary according to the requirements of his activity, but in general he is responsible for the general progress of the sport. He is to assign duties to the assistant managers, whom he is to supervise at all times.

The junior assistant managers and the senior managers are selected by a committee consisting of the coach, graduate manager, director of physical education, and incoming and outgoing captains. Appointments are subject to approval by the board of control.

Any sophomore is eligible for the position of managerial candidate. The method of applying is merely by filing application with the senior manager of the respective sport.

An appropriately designed insignia is granted the senior manager at the close of his term of office upon recommendation of the appointing committee and the acceptance of the recommendation by the board of control.

BY-LAWS

Section 1. The use of tobacco in any form is prohibited on the campus.

Sec. 2. The use of intoxicating liquors is prohibited.

Sec. 3. Distinctive class insignia or wearing apparel of any class shall not be worn by members of another class.

Sec. 4. Hazing is prohibited.

Sec. 5. Freshmen shall be required to wear the green cap from the beginning of the fall term until Campus week-end with the exception of the time between Thanksgiving and the beginning of the second term.

Sec. 6. The enforcement of freshmen regulations shall be vested in a duly authorized committee of the sophomore class, responsible for their actions to the student council. The method of enforcing these regulations shall be according to the policy outlined by the student council.

Sec. 7. A breach of the methods outlined for the regulation of freshmen by the council, or the application of additional requirements not herein specified, shall be considered hazing, and violation of this ruling shall, if deemed necessary, result in expulsion from the institution.

Method of the Board of Control in Supervising Student Activities

All funds belonging to the Associated Students are kept in the business office of the college. They can be drawn from the business office by the business manager only on requisition approved by the president of the board of control.

The board of control, at the beginning of each year, approves a budget for each student activity. The general manager makes purchases according to these budgets. Any deviation from these budgets in purchases must be approved by the board of control. The general manager only, or his approved agent, may make purchases to be charged to the student body.

All equipment and supplies belonging to the student body are under the direct care of the departments concerned. The general manager keeps a yearly inventory of these goods and the departments are held responsible for them.

All schedules and trips of all student activities chargeable to the student body must be approved by the board of control prior to the trip. All employees of the student body are employed by the president and board of regents on recommendation of the board of control.

OREGON STATE SONGS

"Carry Me Back to O. S. C.," is the song which we always rise to sing. To the old grad it brings back happy memories of his pleasant years at the "college on the hill." To the undergraduate it brings pride to his college, love of its traditions and its ideals.

Alma Mater

Within a vale of western mountains,
There's a college we hold dear.
Her shady slopes and fountains
Oft to me appear.
I love to wander on the pathway
Down to the trysting tree,
For there again I see in fancy,
Old friends dear to me.

Chorus:

Carry me back to O. S. C.,
Back to her vine-clad halls;
Thus fondly ever in my mem'ry
Alma Mater calls.

O. S. C. Medley

Who am I, sir? An O. S. C. man am I;
An O. S. C. man, sir, and will be till I die,
Ki Yi;
We're up to snuff, we never bluff, we're in for
any fuss—
There isn't a bunch of college men can beat us
in a muss,
So we'll fill our lungs with lusty air and shout
it to the sky,
We'll fight for dear old O. S. C.
For an O. S. C. man am I.
O. S. C., O. S. C. zip-boom, zip-boom, zip-
boom-bee,
O. S., O. S., O. S. C.,
O. S. C., O. S. C.,
Smash 'em, bust 'em—that's our custom;
O. S. C.
For I'm a Beaver born and a Beaver bred,
And when I die, I'll be a Beaver dead.
For it's Rah, Rah, for O. S. C.!
Rah, Rah, for O. S. C.!
Rah, Rah, for O. S. C.!
Here's to the men we know and love,

Beavers tried and true;
 Here's to the men of the Orange line
 Fighting for me and you,
 Up with the glass and pledge them, lads,
 Flashing its amber gleam,
 While deep in our hearts the toast shall be:
 Here's to the grand old team!

Hail to Old O. S. C.

Here we come with a toast and song
 To the college upon the hill,
 We love its shady slopes and trees,
 Each memory cheers and thrills.
 But the fondest tho'ts when the years have run,
 Will be of teams and victories won;
 Each man a loyal son,
 Hail to old O. S. C.

Chorus:

O. S. C., our hats are off to you,
 Beavers, Beavers, fighters through and through.
 We'll cheer for every man,
 We'll root for every stand
 That's made for old O. S. C.
 Rah, Rah, Rah,
 Watch our team go tearing down the field,
 Men of iron, their strength will never yield;
 Hail, hail, hail, hail,
 Hail to old O. S. C.

Beaver Pep

Cheer for the Beavers ever,
 The heroes of my song,
 We will desert them never!
 We're ready to back the Orange and Black
 All day long—Rah!
 Mighty in bold endeavor,
 They fight for you and me,
 They are the lunging, plunging, wonderful team,
 They are the men of O. S. C.

OREGON STATE YELLS

Beaver Chant

Chant—B-E-A-V-E-R-S

Fast—B-E-A-V-E-R-S

bea-VERS

bea-VERS

r-r-r-r-R-R-R-Rah!

Three Rah Yells

Name.....

RAH

RAH

RAH

Name.....

Go Get 'em, Beavers

GO GET 'EM, BEAVERS,

GO GET 'EM!

(Three times)

Oregon State

O-R-E-G-O-N—(pause)

S-T-A-T-E—(pause)

Oregon State

Oregon State

RAH

Growl Yell

Gr-r-r-r-rah

Gr-r-r-r-rah

OR-egon State

OR-egon State

Grrr-rrr-rrr-RAH

Siren

(Long whistle)

BOOM-AH—(pause)

OREGON STATE—(pause)

RAH

Beavers

B-E-A-V-E-R-S—(pause)

Beavers—(pause)

Beavers—(pause)

WOW

Hail—Beavers

Hail—Beavers

Hail—Beavers

Beavers—Beavers

BEA-VERS

Yea—Team

YEA—TEAM

YEA—TEAM

Fighting Team

Beaver. Team

YEA—TEAM

ATHLETIC SCHEDULES 1930-31

Football

Sept. 27	Gonzaga (night)	Corvallis
Oct. 4	Southern California	Los Angeles
Oct. 10	California Aggies (night)	Corvallis
Oct. 18	Stanford	Palo Alto
Oct. 25	Pacific (night)	Corvallis
Nov. 1	Washington State	Portland
Nov. 15	University of Oregon	Corvallis
Nov. 21	U. C. L. A. (night)	Los Angeles
Nov. 27	West Virginia	Chicago

Basketball

Jan. 9	Washington State	Pullman
Jan. 10	Washington State	Pullman
Jan. 12	University of Idaho	Moscow
Jan. 13	University of Idaho	Moscow
Jan. 19	Washington State	Corvallis
Jan. 20	Washington State	Corvallis
Jan. 26	University of Washington	Corvallis
Jan. 27	University of Washington	Corvallis
Jan. 31	University of Oregon	Corvallis
Feb. 6	University of Washington	Seattle
Feb. 7	University of Washington	Seattle
Feb. 13	University of Idaho	Corvallis
Feb. 14	University of Idaho	Corvallis
Feb. 21	University of Oregon	Eugene
Feb. 27	University of Oregon	Corvallis
Feb. 28	University of Oregon	Corvallis

Baseball

Apr. 24	University of Oregon	Eugene
Apr. 25	University of Oregon	Corvallis
May 1	University of Idaho	Corvallis
May 2	University of Idaho	Corvallis
May 6	Washington State	Corvallis
May 7	Washington State	Corvallis
May 11	University of Washington	Corvallis
May 12	University of Washington	Corvallis
May 15	University of Idaho	Moscow
May 16	University of Idaho	Moscow
May 18	Washington State	Pullman
May 19	Washington State	Pullman
May 21	University of Washington	Seattle
May 22	University of Washington	Seattle
May 29	University of Oregon	Corvallis
May 30	University of Oregon	Corvallis

Track

Apr. 24	University of Oregon	Corvallis
May 1	University of Oregon Frosh....	Corvallis
May 8	University of Washington	Corvallis
May 15	Washington State	Pullman
	University of Washington	Seattle
May 22	University of Oregon Frosh....	Corvallis
May 23	University of Oregon	Eugene

Tennis

Apr. 25	University of Oregon	Corvallis
May 13	University of Washington	Corvallis
May 23	University of Oregon	Eugene

(Varsity and Frosh)

MINOR SPORTS**Tennis**

Lack of sufficient tennis courts on which to practice has been a handicap to tennis aspirants at O. S. C., as only a limited amount of practice can be obtained. Despite this disadvantage the sport has shown steady improvement and increased popularity. Careful adherence to training rules and the faithful participation in practice has been responsible for the recent development.

Cross Country

The intramural cross-country races at O. S. C. serve as early season training for the long-distance runners. An annual turkey run, open to all college men, the closing event of the intramural season, is the elimination race that decides who shall meet the University of Oregon in the dual meet. The 20 men placing first in this run compose the varsity team.

Swimming

With the excellent 100-foot tank available to all men students, and with the leadership of John E. Kenney as head swimming coach, swimming is an active sport. Meets with other institutions, water polo games, and intramural contests receive popular interest.

Polo—Special Military Sport

When polo at Oregon State was recognized as a special military sport, added impetus was given to the activity on the campus. Letters, a large block "O" with a polo mallet intersecting it, are awarded.

Eligibility Rules

The conference eligibility rules are as follows: To be eligible to play on any varsity team, a man must have resided a year in the institution in which he participates in sports, and must have made 36 term hours. He must have made two-thirds of hours carried the term preceding his participation.

His standing must be strictly amateur.

Only three years' participation in major sports is permitted.

A man must be in good standing at all times in the institution which he is attending.

Men are eligible to freshmen teams when they are entering an educational institution for the first time, and are only eligible for such sports as they have had an opportunity to participate in at any other institution of like rating.

INTRAMURAL ATHLETICS

"Every man at Oregon State in athletics," is a slogan that is nearly being fulfilled each year. Ninety-five per cent of all the men of the institution that are physically fit are engaged in some form of intercollegiate or intramural athletic work. Each intramural sport is played in its season. The program for intramural sports extends from the beginning of the fall term until the close of the spring term.

The intramural relays enlist more than 40 teams who compete for the coveted trophy. The cross country sport affords competition for more than 500 men, many of whom develop into varsity distance men.

Representatives of more than 45 organizations enter the track and field meets each spring. Many new records are set each year by the time the all-school track and field meet is decided. An annual Thanksgiving week turkey run is sponsored by the business men of Corvallis who give turkeys as prizes to the winners.

The 100-foot tank is open to all and is the scene of many contests. Forty teams competed in the 200-yard swimming relays for all-college title and plaque. Besides the relays an all-college swimming meet is given in every event of the sport. The compulsory swimming rule in-

sures that every graduate from O. S. C. is proficient in swimming.

Baseball is a popular sport because it affords activity for almost every college man who wishes to represent his organization. All-school titles are also determined in horseshoes, handball, and tennis.

ATTEND YOUR GYM CLASSES

All students are required to attend classes in physical education during their first two years. Unfortunately many first year students do not realize the importance of having no "flunks" recorded against them. One of the easiest things you can do in college, freshmen, is to get a flunk in gym. But when you reach your junior and senior years, that flunk may keep you out of the coveted honor society or otherwise prove a stumbling block. Now is the time to fortify yourself against this evil by making a perfect record in your gym work.

Required Gymnasium Work for Freshmen

1. Physical examination will be given in the men's gymnasium, according to the schedule furnished you.

2. Registration for gymnasium is in the former women's gymnasium. Remember your gymnasium number.

3. Secure your locker assignment in the locker room, No. 115, men's gymnasium.

4. Attend your classes at least twice a week.

6. More than two absences from gymnasium, unexcused by your instructor, will constitute a failure.

7. You must attend the identical class for which you signed, unless your assignment is changed in the office of the department of physical education before two weeks' time.

8. Credit for participation in intramural activities is not granted to freshmen.

9. In case of absence, only college health service excuses will be accepted by the department.

10. There is a large range of activities, especially after the freshman year. Enter into your physical educational work with vigor and enjoyment. It will pay you back dividends, and the privileges are worth much to you.

MEMORANDA

MEMORANDA

CLASS SCHEDULE — FIRST TERM

Name..... Age..... Date..... 19.....

School or Department..... Major..... Class.....

Subject	Course	No.	Cr.	Room	M	T	W	T	F	S
1.....
2.....
3.....
4.....
5.....
6.....
7.....
8.....
9.....

Gym No.....

Basket No.....

CLASS SCHEDULE — SECOND TERM

Name..... Age..... Date.....19.....

School or Department..... Major..... Class.....

Subject	Course	No.	Cr.	Room	M	T	W	T	F	S
1.....
2.....
3.....
4.....
5.....
6.....
7.....
8.....
9.....

Gym No..... Basket No.....

CLASS SCHEDULE — THIRD TERM

Name..... Age..... Date..... 19.....

School or Department..... Major..... Class.....

Subject	Course	No.	Cr.	Room	M	T	W	T	F	S
1.....										
2.....										
3.....										
4.....										
5.....										
6.....										
7.....										
8.....										
9.....										

Gym No.....

Basket No.....

FRESHMAN WORK REPORT

First hour

Second hour

Third hour

Fourth hour

If you are out for athletics (.....) have your coach
sign here. (Football, Etc.)

Coach.....

FRESHMAN WORK REPORT

First hour

Second hour

Third hour

Fourth hour

If you are out for athletics (.....) have your coach
sign here.
(Football, Etc.)

Coach.....

FRESHMAN REPORT SHEET

OUTSIDE WORKING HOURS

.....
Employer's signature

I have voted at the following elections:

1. Fall quarter

2. Student body

3. Spring election

IF OUT FOR ATHLETICS

.....
Coach's signature

Rook Dances Attended

1.

2.

3.

4.

.....
Must be stamped on each occasion by Beaver Knight in charge.

