

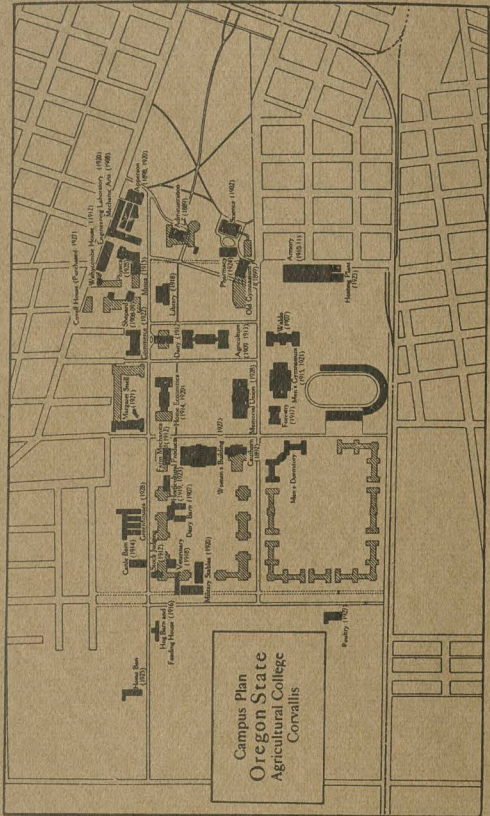
10-23a  
OREGON  
• STATE •

STUDENT  
HANDBOOK

ORE. STATE  
UNIVERSITY  
ARCHIVES

1 9 3 2 • 1 9 3 3

# Campus Plan Oregon State Agricultural College Corvallis



OREGON STATE  
❖ STUDENT ❖  
HANDBOOK

1932-33

WARREN REID, Editor

Published by the Associated Students of Oregon  
State College under the direction of  
Sigma Delta Chi, professional  
journalistic fraternity

---

Corvallis, Oregon, 1932

---

# COLLEGE CALENDAR

---

## First Term 1932-33

---

- September 19, Monday....Freshman Registration  
 September 24, Saturday.....Registration all  
 other students.  
 September 26, Monday.....Recitation begins  
 October 1, Saturday.....Latest day for with-  
 drawal, with \$5.00 minimum charge.  
 October 8, Saturday....Latest day for refund of  
 three-fourths fees.  
 October 8, Saturday.....Latest day for making  
 changes in programs.  
 October 8, Saturday.....Latest day for addition  
 of new courses or new registration.  
 October 15, Saturday.....Latest day for drop-  
 ping courses without "F" when work  
 unsatisfactory.  
 October 22, Saturday.....Latest day for re-  
 fund of one-half fees.  
 November 2, Wednesday.....Close of mid-term  
 examinations.  
 November 5, Saturday.....Latest day for re-  
 fund of one-fourth fees.  
 November 15, Tuesday.....Latest day to file  
 application for graduation.  
 November 24, Thursday.....Thanksgiving Day;  
 holiday.  
 December 10, Saturday.....Recitations end  
 December 12-16, inc., Monday to Friday.....  
 Final Examinations.  
 December 16, Friday.....Latest day for re-  
 moval of Incompletes.  
 December 16, Friday.....First term ends

---

## Second Term 1932-33

---

- January 2, Monday.....Second term registration  
 January 3, Tuesday.....Recitations begin

- January 7, Saturday.....Latest day for withdrawal, with \$5.00 minimum charge.
- January 14, Saturday.....Latest day for refund of three-fourths fees.
- January 14, Saturday.....Latest day for making changes in programs.
- January 14, Saturday.....Latest day for addition of new courses or new registrations.
- January 23, Monday.....Latest day for dropping courses without "F" when work unsatisfactory.
- January 28, Saturday.....Latest day for refund of one-half fees.
- February 8, Wednesday.....Close of mid-term examinations.
- February 11, Wednesday.....Washington's Birthday; holiday.
- March 11, Saturday.....Recitations end
- March 13-17, inc., Monday to Friday.....Final Examinations.
- March 17, Friday.....Latest day for removal of Incompletes.
- March 17, Friday.....Second term ends

---

### Third Term 1932-33

---

- March 27, Monday.....Third term registration
- March 28, Tuesday.....Recitations begin
- April 1, Saturday.....Latest day for withdrawal, with \$5.00 minimum charge.
- April 8, Saturday.....Latest day for refund of three-fourths fees.
- April 8, Saturday.....Latest day for making changes in programs.
- April 8, Saturday.....Latest day for addition of new courses or new registrations.
- April 17, Monday.....Latest day for dropping courses without "F" when work unsatisfactory.
- April 22, Saturday.....Latest day for refund of one-half fees.
- May 3, Wednesday.....Close of mid-term examinations.

- May 6, Saturday.....Latest day for refund of one-fourth fees.
- May 15, Monday.....Latest day for seniors to adjust graduation deficiencies.
- May 30, Tuesday.....Memorial Day; holiday
- May 31, Wednesday.....Senior examinations close
- June 3, Saturday.....Recitations end
- June 3, Saturday.....Senior Class Day; Alumni Reunion.
- June 4, Sunday.....Baccalaureate Service
- June 5, Monday.....Sixty-fourth Annual Commencement.
- June 5-9, inc., Monday to Friday.....Final Examinations.
- June 9, Friday.....Latest day for removal of Incompletes.
- June 9, Friday.....Third term ends

---

### Traditional College Events

---

Homecoming week-end occurs at the time of the Oregon football game each year. The campus is appropriately decorated for the return of alumni, and the entire college community turns out for a rapid-moving program headed by student cheer leaders.

Annual inspection day occurs on a regular drill day in the third term. The R.O.T.C. unit is reviewed by military and civil authorities.

Awarding of honor prizes and announcements of honor organization pledgings occurs on Phi Kappa Phi day in May.

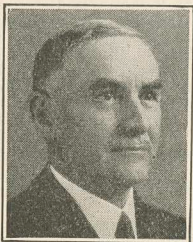
Campus Week-end is outstanding in that it is the time when freshmen are allowed to discard their "lids", the sophomores don cords, juniors cultivate embryo mustaches, and seniors realize that they are near-alumni. The rook-soph tug-of-war, burning of the green, junior breakfast, and junior follies are popular attractions.

Traditional social events include the All-college formal and the Rook Dance in fall term, Sophomore Cotillion, Junior Prom, and Military Ball in winter term, and Senior Ball in spring term.

---

## The Chancellor's Greeting

---



It gives me pleasure to extend greetings and a hearty welcome to all returning students and to those entering the college for the first time. I sincerely wish for you a very happy and successful year.

W. J. KERR,  
Chancellor

---

## Elmer Buckhorn, Pres. Associated Students

---



We welcome you into the Student Body of Oregon State College. We are proud that you have chosen to become Beavers, but that distinction is not without its responsibility. The institution, which you have adopted for your Alma Mater, is rich in history and traditions, and it remains for you individually to respect and uphold the honor of the illustrious name.

It will be difficult, at first, to readjust yourself to your new surroundings, but lose no time in developing an active interest in your class, and student affairs. For each of you there is a place in the

various student activities and organizations. Enter into the spirit of the campus, realizing that only through whole-hearted cooperation with your fellow students can any undertaking of the student body be successful. Develop your class into an efficient machine which will carry out your ideals to the glory of the college.

Develop habits now that will enable you to get the most out of your collegiate career. Remember that you are sons and daughters of Oregon State. Strive to do your best in all of your undertakings in a manner which will do honor, not only to yourselves, but to your Alma Mater.

ELMER BUCKHORN

---

### A Word From the Beaver Knights

---

George Lage, Duke

The Beaver Knight chapter of Intercollegiate Knights is an underclassmen's honorary service organization which acts as a "pep and tradition" committee for the college. The order is authorized by the constitution of the Associated Students and sanctioned by the college administration.

The object of the organization is to instruct the freshman in songs, yells, and traditions of the college which must be upheld in order to have true Oregon State spirit; to receive and entertain visiting teams; to help with campus traffic; and to function at all college events such as athletic contests, convocations, and receptions.

The student council, backed by the administration, encourages the work done by the Beaver Knights. The method of instruction of traditions and the method of punishment of offenders may at times seem harsh and unnecessary, but it is the sort of discipline that experience has shown most effective.

You are required to carry this "Rook Bible" at all times. The schedule in the back must be filled in completely in ink. Be sure that you receive credit for all work done, duties fulfilled,



convocations and rook dances attended.

You are required to memorize the following information and be ready to recite when called upon by any Beaver Knight.

|  |       |
|--|-------|
| Sketch of Oregon State .....               | 14    |
| Traditions .....                           | 8     |
| Class Gifts .....                          | 9     |
| Names of Deans of Schools .....            | 15    |
| Names of Associated Student Officers ..... | 19    |
| Honorary Organizations .....               | 13    |
| Publications .....                         | 21-22 |
| All Songs and Yells .....                  | 57-58 |

---

### Spurs

---

Spurs is a sophomore women's national honorary society whose purpose is to promote all activities in which the student body takes part and to uphold all college traditions. New members are pledged and initiated at the close of the spring quarter by the retiring Spurs. A member is recognized by the gold spur pin and the badge, which is an orange spur on a black felt background. The Spur rules are:

1. All rookesses shall attend convocation, student body assembly, class meetings, women's league, and Y. W. C. A. meetings.

2. Every Wednesday all rookesses shall wear the customary green ribbon, which is to be put on before breakfast and not to be taken off until bed time. If a rookess wears a hat, the ribbon must be worn on the hat.

3. Rookesses shall show proper respect to all sophomores and other upperclassmen and extend them the usual courtesies.

4. Rookesses shall not walk on campus grass.

5. Rookesses shall speak to all members of the faculty and be congenial with all students.

6. There shall be no fussing at athletic events.

7. Rookesses must know all college songs.

8. Rookesses shall not have library or mid-week dates.

9. Rookesses shall be familiar with all college rules and traditions.

10. Violations of all rules are tried by Spurs and punished accordingly.

## Tradition

---

Oregon State is a college of ideals—ideals of character, honesty, courage, and fair play. Upon these principles are the traditions of the institution built. No college is stronger than its ideals; and all colleges are revered and loved because of traditions based on high ideals.

### Conduct Traditions

Pride in the campus censors the practice of walking on the grass.

Smoking on the campus is prohibited by one of the oldest, most rigorously observed traditions.

Every student is expected to attend athletic events, but there shall be no "fussing"; that is, he shall not accompany a young lady to the games.

Rooks must wear their green hats at all times, and rookesses their green ribbons on the scheduled days.

At athletic contests all students always stay until the event is finished.

All men students remove their hats in buildings.

## Class Traditions

---

### Seniors

|                    |                                     |
|--------------------|-------------------------------------|
| Table at Wagner's. | Trysting tree.                      |
| Hats; mustache.    | Trip to Newport                     |
| Gifts to college   | when rhododendrons<br>are in bloom. |

### Juniors

|                    |                   |
|--------------------|-------------------|
| Junior Lunch.      | Junior Breakfast. |
| Corduroy trousers. | Junior Bust.      |
| Campus Week-end.   | Junior Prom.      |

### Sophomores

|                       |            |
|-----------------------|------------|
| Soph-Rook tug-of-war. | Cotillion. |
| Soph-Rook Olympics.   | Sweaters.  |

### Freshmen

|               |                       |
|---------------|-----------------------|
| Green lids.   | Burning of the green. |
| Rook bonfire. | Tug-of-war.           |

---

### Class Gifts

---

The custom for each departing class to leave a gift that will enrich the campus started with the class of 1901.

The large silver poplar tree, between the administration building and science hall was used as a gathering place for students. The class of 1901 placed a large granite stone under the tree to hallow the surrounding ground so that only seniors could tread the grass under the old sentinel, now known as the trysting tree.

The class of 1902 left the lady of the fountain at the eastern entrance to the campus. The lady was stolen but later found in Portland. It was returned to the college and securely placed in position only to be completely demolished by vandals in the fall of 1928.

#### Other Class Gifts

1903—Cement bench on the lower campus.

1907—Cement bench in grove near women's old gym.

1908-09-10-12—The band stand east of agriculture hall.

1911—Flag pole near the band stand.

1913—Elms in front of library.

1914—Elms in front of mines building.

1915—Tulip trees in front of home economics building.

1916—Fountain in front of agriculture hall.

1917—Cement pillars east entrance to campus.

1918—Arch in front of entrance to Alpha hall.

1919—Clock in library.

1920—Bronze statue in front of men's gymnasium.

1921—\$1,000 to the Memorial Union building

1922—\$1,000 to the Memorial Union building.

1923—Bronze memorial in the library dedicated to the men of Oregon State killed in the World War.

- 1924-5—Mural paintings in the library.  
 1926—Bronze doors for the Memorial Union building.  
 1927—Fireplace for Memorial Union building.  
 1928—Fireplace for Memorial Union building.  
 1929—Globe atlas for Memorial Union building.  
 1930—Grand piano in the Memorial Union building.  
 1931-32—Drive in front of Memorial Union building.
- 

### The Student Co-op.

---

The Co-op book store is owned and controlled by the students of the Oregon State college and operated under the supervision of a board of directors consisting of seven students and two faculty members.

The board meets at the discretion of the president and transacts all business pertaining to the efficient operation of the store. A manager is chosen, under the articles of association, whose duty it is to operate the store on a business basis under the direction of the board.

Any vacancy caused by the withdrawal of a member is filled by the board, six of whom constitute a quorum. The term of office is one school year. The officers for the school year of 1932-33 are:

Ellis Stevens, president; Claire Young, vice-president; Adena Joy, secretary; Members: Lewis Withers, Gordon Applewhite, Gordon Bell, Dean G. W. Peavy and Dr. N. H. Comish.

---

### Cooperative Managers Association

---

The Cooperative Managers association, composed of the managers of all the fraternities and sororities, was formed to enable the individual managers to economize through large quantity

buying. It is, like the book store, a profit-sharing organization, and is a medium for supplying nearly everything required to operate a fraternity or sorority.

The association elects a board of directors to conduct its business, those for this year being: Edwin Vennewitz, president; Helen Russel, vice-president; Lois Lutz, secretary; Bertil Sjoblom, and Kenneth Chapson.

---

### Young Men's Christian Association

---

The Y. M. C. A. is an organization of students which exists to serve all men on the campus. It maintains a special building, Shepard hall, in which there is a comfortable reading and study room, a game room, a shower room, a mail service, and a free employment bureau. Forty percent of the men in Oregon State are helped through college by work obtained through this employment service.

The association takes into membership all men who subscribe to its objectives. No membership fee is required.

Officers for this year include Jack Greves, president; Milton Carlson, vice-president; Howard Richards, secretary; and Maurice Shepard, treasurer.

---

### Young Women's Christian Association

---

The Y. W. C. A. is an international movement of women. The students are aiming toward more real values in life. Friendships are made, barriers are broken down, and leadership developed through such interests as world fellowship, music, annual waffle breakfast, bazaar, and teas.

A freshman who shows ability and interest as a committee member is eligible for a chairmanship. Those who prove themselves especially valuable may serve on either council or the cabinet.

Council Members are led by the following

officers: Fern Edwards, president; Shirley Brownson, vice-president; Carmen Walrad, secretary, and Thelma Hoover, treasurer.

---

### Inter-Collegiate Independents Association

---

Oregon State, college one of the first to organize its non-fraternity and non-sorority students, has one of the strongest and largest organizations of its kind in existence. Four years ago it became a charter member of the inter-college organization.

Governed by the Independent Student council, the association aims to provide social and athletic ideals. It attempts to direct the lives of its members into those channels which aid them in their collegiate and business careers. Lasting friendships result from the close acquaintanceships formed during college days.

Students not members of a fraternity or sorority automatically become members of the association. Upon payment of a small fee they are listed as active members.

The association is divided into four divisions: the women's hall, Phrateres club, men's halls, and Rosswood clubs. Last year's membership listed over half of the students on the campus.

---

### Honor Societies

---

Any student receiving the distinction of election to any honorary society is looked upon with approving eyes by college authorities and students who are working toward that same goal. Election to "honoraries" is based on excellence in scholarship, leadership, personality, and efficiency in a particular subject. Only a limited number of the student body is chosen yearly for membership. The fact that most of these societies are national in scope, with chapters in the leading colleges and universities and with uniformly high standards for membership, makes

election to one a distinction highly prized. It is important that each new incoming student realize the importance and significance of such organizations from the beginning of the college year—freshman week. To “make an honorary,” a few don'ts may be helpful.

Don't be afraid to study.

Don't put off until the week end what is to be studied today.

Don't be a know-all, but rather cultivate a pleasing personality.

Don't be a high-brow; encourage the “hello” spirit.

Don't wait for someone else to go ahead.

Don't give up.

---

The following list includes honorary organizations represented at Oregon State:

Alpha Delta Sigma—Advertising; men.

Alpha Kappa Psi—Commerce; men.

Alpha Zeta—Agriculture; men.

Beta Alpha Psi—Accounting; men.

Cap and Gown—Scholarship; women.

Delta Sigma Rho—Forensics; men and women.

Eta Kappa Nu—Electrical engineering; men.

Euterpe—Music; women.

Kappa Delta Pi—Education; men and women.

Kappa Kappa Alpha—Art; men and women.

Kappa Kappa Psi—Band; men.

Mu Beta Beta—4-H club work; men and women.

National Collegiate Players—Drama; men and women.

Omicron Nu—Home economics; women.

Parthenia—Physical Education; women.

Phi Chi Theta—Commerce; women.

Phi Kappa Phi—Scholastic; men and women.

Phi Lambda Upsilon—Chemical engineering; men.

Phi Tau Chi—Industrial arts; men.

Rho Chi—Pharmacy; men and women.

Scabbard and Blade—Military; men.

Sigma Alpha—Physical education; men.

Sigma Delta Chi—Journalism; men.

Sigma Delta Psi—Athletics; men.

Sigma Tau—Engineering; men.  
Tau Beta Pi—Engineering; men.  
Theta Sigma Phi—Journalism; women.  
Xi Sigma Pi—Forestry; men.

---

### Sketch of Oregon State

---

In 1862 Congress appropriated 90,000 acres of land to the state of Oregon, on condition that a state college should be in operation in 1867.

The destiny of Oregon State might have been changed had it not been for the generosity of the South Methodists in donating their church building as the first "Temple of Learning."

This simple old structure served as the entire college for many years, for in 1867 there were but 20 students registered.

In 1868 "Corvallis College" was designated as the State Agricultural college by the state legislature which definitely confirmed it as a national and state institution in 1885.

In 1887 Benton county gave 35 acres of land to insure the permanent location of the college at Corvallis, and in this same year the citizens of Benton county laid the cornerstone for the present administration building.

At this time only four courses were taught, agriculture, general science, mechanical arts, and household science.

In 1899 only a limited number of students could take advantage of gratuitous education, only one being chosen from each senatorial and representative district.

By way of comparison, the college has grown from main courses with five instructors and 20 students in 1867, to 10 degree-granting schools including more than 60 departments, approximately 400 instructors and over 5000 students. Oregon State includes in its enrollment representatives from every county in Oregon, from 18 states, and from nine territories and foreign countries.

In accommodations the college has developed from one building and 35 acres of land in 1885, to 43 substantial buildings and 499 acres of land in 1930.



## The College

The resident instruction division is but one of the three main divisions of college work. The other divisions include the research and the extension service.

### Deans and Directors of Oregon State College

|   |                              |
|---|------------------------------|
| Chancellor of the College.....          | Dr. William Jasper Kerr      |
| Agriculture .....                       | Dean William A. Schoenfeld   |
|   | Dean Emeritus, A. B. Cordley |
| Director of the Lower Division.....     | Dr. M. Elwood Smith          |
| Commerce .....                          | Dean, Emeritus, J. A. Bexell |
| Forestry .....                          | Dean G. W. Peavy             |
| Engineering .....                       | Dean H. S. Rogers            |
| Pharmacy .....                          | Dean Adolph Ziefle           |
| Home Economics .....                    | Dean Ava B. Milam            |
| Education .....                         | Dean James R. Jewell         |
| Executive Secretary of the College..... | William A. Jensen            |
| Dean of Women .....                     | Dr. Kate W. Jameson          |
| Dean of Men .....                       | Dr. U. G. Dubach             |
| Registrar of the College .....          | E. B. Lemon                  |
| Science .....                           | Dean Earl LeRoy Packard      |
| Director of Libraries .....             | Lucy Lewis                   |
| Commandant of Cadets ....               | Col. H. R. Patterson         |
| Director of Extension Service....       | Paul V. Maris                |

### Board of Higher Education

The general government of the college is vested primarily in the state board of higher education which supplants the old board of regents. Under its control are four other administrative bodies, the administrative council, the college council, the faculty, and the staffs of the experiment station and extension service.

The administrative council determines all questions dealing with policy and administration; the college council considers all matters pertaining to educational work, including courses, requirements for admission, and graduation; the college faculty considers questions of methods and discipline.

Members are: Hon. C. L. Starr, Hon. B. F.

Irvine, Hon. E. C. Sammons, Hon. F. E. Callister, Hon. E. C. Pease, Hon. Albert Burch, Hon. C. C. Colt, Hon. Herman Oliver, and Hon. Cornelia Marvin Pierce.

#### Alumni Association

About 1920 the alumni association was re-organized. Plans were worked out whereby a permanent secretary might head the work. Branch organizations were formed in all sections of the state, and the interest of the incoming graduates was enlisted. That efficient cooperation was secured is well proved by the effective way in which the alumni responded in the successful passage of the millage bill and in support of the Memorial Union fund.

Success in any line cannot be gained without financial support. Every graduate is given the opportunity to become a part of the organization by one of three ways: By paid up life membership, life membership to be paid by installments, or by payment of yearly dues. In return he is given the right to active participation in the organization, a subscription to the "Oregon State Monthly," published monthly, and admission to the alumni luncheon and dance held each year during the Commencement week on the campus.

The alumni association is the medium by which Oregon State men and women keep in touch with their Alma Mater.

The board of directors of the alumni association is: C. A. Dunn, president; Charles Reynolds, vice-president; David Wright, treasurer; E. C. Allworth, secretary-editor; and A. K. Berman.

---

### The Memorial Union

---

"The Memorial Union, dedicated to the service and inspiration of the living and to the memory of our immortal dead."

The Memorial Union is a student service building that houses various undergraduate activity groups and the alumni organization, sup-

plies banquet and cafeteria rooms, fountain service, offers facilities for student body dances, has a stage for plays, houses the co-op store, has lounging rooms for faculty and students with special rooms for men and for women, has trophy rooms, and in general serves as a center for student life.

The Union has been made possible through contributions made by students, alumni, faculty, and other friends of the college. Costing more than a half million dollars, it stands as an example of classic magnificence in architecture, a silent tribute to our soldier dead, and a lasting inspiration to the living generation on the campus.

The idea for a memorial was first formed by a few students who, following the world war, sought some means by which the college could honor its war dead. The student union building was considered a more fitting memorial than a monument, since it would, through its service, inspire and aid as well as remind.

Enthusiasm for the plan was immediately evidenced by students and alumni alike. Enthusiastic drives following the perfection of the architectural plans, drawn by an Oregon State alumnus, netted enough pledges to start construction. The site for the union was dedicated in 1926 and ground was broken for construction in the spring of 1927. The cornerstone was laid Alumni day, June 2, 1928.

The ground floor includes the ball room which has a stage at one end, so that the great room may be converted into a showhouse. It may also be used as a banquet hall for large assemblages. The kitchens, cafeteria, and fountain are all located on the ground floor.

The next is a mezzanine floor with a beauty parlor, checking, and rest rooms at the west end, The east end contains the co-op store, a barber shop, and a ticket office.

Above the mezzanine is the first or main floor which contains the main concourse, the central lounge room, with a smaller separate lounge for women students at the west end and for men at the east end. Various student, alumni, and building offices are also on this floor.

The second floor has trophy rooms and office rooms for various campus organizations. A balcony runs around three sides of the main lounge. At the west end is the women's faculty lounge room.

Honor fraternities, publications, among which are the Daily Barometer, the Beaver, the Monthly, the Directory, and the Technical Record; graduate manager's department, various clubs, athletic news bureau, Associated Women students, and alumni association are among the groups housed in the Union.

Executive control of the Memorial Union is vested in two boards. The board of governors has charge of finances and construction and is composed of four alumni, one regent, and two student members. The board of directors has charge of the building's activities. It is composed of four student members, one faculty, and one alumni member, and graduate manager. The general manager is appointed by the board of governors. He is responsible for all financial affairs of the Memorial Union and the orderly management of the building, and has charge of all employees.

Board of Governors consists of Percy A. Cupper, '04, chairman; Eddy E. Wilson, '89; Roy R. Clark, '09; R. Earl Riley, '12; John Bonebrake, '33; and another student member not yet selected.

Board of Directors consists of John Bonebrake, president; Elmer Buckhorn, Ruth Whepley, Waldo Taylor, Carl Lodell, Jack F. Porter, E. C. Allworth and G. V. Copson.

---

### The Associated Students

---

This is an organization of the entire student body working under a constitution and by-laws approved by the faculty, and having general authority over all student body enterprises. Officers are elected annually, nominations and elections being conducted in a manner similar to that of the state electorate. The officers consist of a president and secretary chosen from the

senior class, and three vice-presidents, chosen one each from senior, junior, and sophomore classes. The president, first vice-president, secretary, and senior and junior vice members of the board of control constitute the executive committee of the student body and have general supervision of all affairs of interest to the student body.

Student Body officers are: Elmer Buckhorn, president; William Perrin, vice-president; Margaret Zimmerman, second vice-president; William Gilbert, third vice-president; Ruth Whepley, secretary; John Bonebrake, president of Memorial Union; Waldo Taylor, editor of Barometer; Forrest Lindsay, yell leader; Marvin Davidson, Editor of Beaver; Jean Freeborn, Don Hood, Kermit Lindstedt; members of Board of Control.

#### The Board of Control

The board of control consists of three faculty members appointed by the president of the college, one alumnus chosen by the alumni association, and six students who are the executive committee of the student body. The student body constitution vests in this board of control authority to supervise all student body interests entailing the expenditure of student body funds. They exercise functions in the main by the approval of budgets and schedules. The immediate supervision is exercised through a general manager appointed by the board of control. Members are:

Elmer Buckhorn, William Perrin, Ruth Whepley, Jean Freeborn, Don Hood, Kermit Lindstedt, Wallace Kadderly, Dean H. S. Rogers, Jay Reynolds, and C. L. Johnson.

#### The Student Interests Committee

The student interests committee is composed of the president of the Associated Students, editor of the Barometer, president of the Independent Student Council, president of the Interfraternity Council, president of Pan-Hellenic Council, president of the Associated Women students, the dean of women, the dean of men, chairman of scholastic committee, chairman of the housing committee, and the director of

physical education. This committee is designated to look after those interests of the students which are not strictly academic in character. It assists in working out student social problems. It helps to maintain a wholesome relationship between clubs and fraternities and the college. It is prepared to assist student organizations in all their financial dealings. In short the committee strives to bring about those conditions which will make the student's college life of the greatest profit to him.

---

### **Associated Women Students of Oregon State**

---

This organization includes in its membership all women in the college. Organized in 1916, its purpose is to foster unity and cooperation among the women and to promote a spirit of democracy.

All campus organizations of which women are members are a part of the association and are represented on its governing body. The association aims to coordinate the work of these various organizations giving each a definite duty to perform, thus preventing duplication of effort.

Officers for this year are: Fern Edwards, president; Margaret Zimmerman, vice-president; Betty Steele, secretary; Ruth DeArmond, treasurer; Dorothy Anne Sidelor, sgt-at-arms.

---

### **Class Organizations**

---

Each class is fully organized with its class officers and its committees, the class dues, as provided in the constitution of the Associated Students, being a compulsory tax collected as part of the regular registration fee. The money so obtained is used to defray class expenses and to buy a gift for the college upon graduation of the class.

Officers are chosen by popular vote, each class voting for its own officers only. Those elected for this year include the following:

Senior Class: Dick Dunn, President; Nadine Millhollen, Vice-president; Ruth Warnke, Secretary; Don Sherwood, Treasurer; Don Hood, Sgt-at-arms; Simon Yerkovich, Student council.

Junior Class: Don Black, president; Alice Malin, vice-president; Marian Gary, secretary; Jimmie Emmet, treasurer; Ed Jordan, Sgt-at-arms; Don Prentiss, Marshall Gray, Student Council.

Sophomore Class: Willard White, president; Ruth Hill, vice-president; Alice Mann, secretary; Bill Jamieson, treasurer; Leonard Wascher, sgt-at-arms; Harry McKay, student council.

Freshman class officers are elected at the beginning of the year at the class meeting.

---

## Student Publications

### The Oregon State Barometer

Waldo Taylor ..... Editor  
 Julius Wilson ..... Manager

In March, 1896, the literary societies of the college began the publication of a monthly periodical, the "O. A. C. Barometer." The enterprise met with deserved success and "the organ of the student body" is now issued as a four-page eight-column daily except Sunday and Monday. It publishes the news of the college and is of general public importance as representing the interests, character, and accomplishments of the student body at the college. By action of the board of regents, resulting from an unanimous recommendation of the student body, a portion of the regular student body fee is devoted to the "Barometer," and every student regularly receives the paper.

### The Beaver

Marvin Davidson ..... Editor  
 Gordon Patton ..... Manager

The annual publication of the student body

made its initial appearance as "The Orange" in 1907. It is a beautiful publication, substantially bound, and fully illustrated with photo-engravings, pen-and-ink sketches, and line and wash drawings. It is a full-dress carnival of the year's life, representing the dignity, the beauty, the versatility the gaiety, the traditions, the sentiment, and the solidarity of Oregon State college.

#### The Oregon State Directory

Claire Young ..... Editor  
Thorne Hammond ..... Manager

This magazine is published twice a year by the students of the school of commerce under the supervision of the faculty of the school, and is devoted to the commercial interests of the college and the state. The publication constitutes a complete directory of all the members of the institution—students, faculty, and employees.

#### Oregon State Monthly

E. C. Allworth ..... Editor and Manager

This is a monthly periodical edited and issued by the general alumni association of Oregon State college. It contains the relatable news of the campus and of the alumni, and is a bond between the former and the latter. The office of the alumni secretary is at the college, the alumni secretary being the manager.

#### The Oregon State Technical Record

Linton Mushen ..... Editor  
Bruce Morrison ..... Manager

This is a quarterly magazine published by the Associated Engineers, devoted to engineering and mechanical arts. It is a member of Engineering College Magazines Associated, a national organization of technical publications. Its purposes are to record engineering progress in the Northwest; to furnish news; to publish records of scientific work done by students in this institution; and to publish any matter of special technical and scientific interest to civil, mining, chemical, mechanical, and electrical engineers, and others engaged in technical pursuits.



---

### The Annual Cruise

Herbert Willison ..... Editor  
Stanley Bishoprick ..... Manager

This is an illustrated magazine published by the Forestry club. Its objects are to unite more closely the forestry and lumbering interests of the Pacific Northwest, to advance scientific forestry and lumbering, and to promote forest interests in every feasible way. Articles of technical value are contributed by members of the faculty and by graduates, experts in their respective fields of effort.

---

### Campus Organizations

---

The following is a list of campus organizations through which many of the various campus activities function: Advertising club, Agricultural club, American Institute of Electrical Engineers, Art club, American Society of Mechanical Engineers, American Society of Civil Engineers, Associated Engineers, Baptist club, Bernard Daly club, Chamber of Commerce, Charles Eliot club, college band, Chemical Engineering association, Cosmopolitan club, Dairy club, Filipino club, Forestry club, glee club, 4-H club, Home Economics club, Horticultural club, Industrial Arts club, Independent Student council, Interfraternity council, Masonic club, Miners club, Newman club, Madrigal club, college orchestra, Pan-Hellenic council, Pharmaceutical association, Polo club, Scrollers, Temenids, Triad club, Women's Athletic association, Wesley Foundation, Westminster association, Withycombe club, Women's Physical Education club.

---

### The Point System

---

James Briggs, Chairman

The activity point system has a two-fold pur-

pose: to encourage scholarship and to widen student participation in activities.

Grades and activities are closely related. If too much time is devoted to extra curricular affairs, scholarship suffers. Since the aim of the college is academic achievement, nothing must hinder the attainment of scholastic requirements. Student activities, therefore, must hold a position of secondary importance.

Oregon State is an institution of democratic principles. Its reputation for putting these principles to practice has won it an enviable position among the colleges. But lest these ideals be sacrificed, all student activities—the one big source of our spirit of fellowship and democracy—must be open to everyone. Activities, when carried prudently, have an important function in college life. Educators freely admit this. All alike are entitled to these benefits.

The work of the point system committee is to adjust the position of the few to that of the group. This is done by allotting to each activity a number of points based on a standard of 100 points, the maximum number of points to be carried by any one person. By limiting students to this maximum, higher scholarship and increased participation in student activities will follow.

The complete list of the student activities with the points allotted to each follows:

### Student Body Organizations

|   |             |
|---|-------------|
| President of Associated Students....                  | 100-100-100 |
| First vice-president .....                            | 50-50-50    |
| Member of Board of Control.....                       | 25-25-25    |
| Member Point System committee                         | 25-25-25    |
| President Memorial Union.....                         | 75-75-75    |
| Chairman Point System committee                       | 30-30-30    |
| Member Memorial Union com-<br>mittee .....            | 20-20-20    |
| Member Social committee .....                         | 10-10-10    |
| Member of Student Council .....                       | 25-25-25    |
| Chairman Pep committee .....                          | 40-40-40    |
| Member Pep committee .....                            | 25-25-25    |
| Member of Board of Governors,<br>Memorial Union ..... | 20-20-20    |

|  |          |
|--|----------|
| General chairman Homecoming ....             | 75-0-0   |
| Assistant chairman Homecoming .... ..        | 35-0-0   |
| Chairman of Homecoming com-<br>mittee .....  | 35-0-0   |
| Member of Homecoming com-<br>mittee .....    | 20-0-0   |
| Chairman of Campus Week End....              | 0-0-35   |
| Member of Campus Week End<br>committee ..... | 0-0-20   |
| Duke of Beaver Knights .....                 | 50-50-50 |
| Member Beaver Knights .....                  | 25-25-25 |
| President Co-op Association .....            | 25-25-25 |
| Secretary of Co-op Association .....         | 10-10-10 |
| Treasurer of Co-op Association ....          | 10-10-10 |

### Class Officers

#### Senior, Junior, and Sophomore Classes

|                                   |          |
|-----------------------------------|----------|
| President .....                   | 50-50-50 |
| Sergeant-at-arms .....            | 15-15-15 |
| Chairman standing committee ..... | 15-15-15 |
| Member standing committee .....   | 10-10-10 |

#### Freshman Class

|                                     |          |
|-------------------------------------|----------|
| President .....                     | 35-35-35 |
| Sergeant-at-arms .....              | 15-15-15 |
| Yell leader .....                   | 20-20-20 |
| Chairman of bonfire committee ..... | 15-15-15 |
| Chairman of standing committee .... | 15-15-15 |
| Member of standing committee .....  | 10-10-10 |

### Campus Publications

#### Barometer

|                               |             |
|-------------------------------|-------------|
| Editor-in-chief .....         | 100-100-100 |
| Assistant editor .....        | 35-35-35    |
| Associate Editor .....        | 50-50-50    |
| Day editor .....              | 35-35-35    |
| Assistant day editor .....    | 25-25-25    |
| Night editor .....            | 40-40-40    |
| Assistant night editor .....  | 30-30-30    |
| Executive news editor .....   | 30-30-30    |
| Sports Editor.....            | 60-60-60    |
| Assistant sports editor ..... | 30-30-30    |
| Feature editor .....          | 25-25-25    |
| Humor editor .....            | 25-25-25    |

|                                    |             |
|------------------------------------|-------------|
| Editorial writers .....            | 20-20-20    |
| Secretary .....                    | 25-25-25    |
| Minor staff members .....          | 20-20-20    |
| Business manager .....             | 100-100-100 |
| Advertising manager .....          | 60-60-60    |
| Collections manager .....          | 40-40-40    |
| Circulation manager .....          | 25-25-25    |
| National collections manager ..... | 25-25-25    |
| Staff assistant .....              | 20-20-20    |
| National advertising manager ..... | 30-30-30    |

#### Beaver

|                                   |             |
|-----------------------------------|-------------|
| Editor-in-chief .....             | 100-100-100 |
| Associate editor .....            | 40-40-40    |
| Assistant editor .....            | 40-40-40    |
| Department editor .....           | 30-30-30    |
| Art editor .....                  | 30-30-30    |
| Assistant department editor ..... | 20-20-20    |
| Secretary .....                   | 25-25-25    |
| Photographer .....                | 35-35-35    |
| Manager .....                     | 100-100-100 |
| Assistant manager .....           | 45-45-45    |
| Circulation manager .....         | 45-45-45    |
| Business staff .....              | 20-20-20    |

#### Annual Cruise

|                                  |          |
|----------------------------------|----------|
| Editor-in-chief .....            | 50-50-50 |
| Associate editor .....           | 25-25-25 |
| Assistant editor .....           | 20-20-20 |
| Editorial staff .....            | 10-10-10 |
| Manager .....                    | 30-30-30 |
| Assistant business manager ..... | 20-20-20 |
| Circulation manager .....        | 15-15-15 |
| Advertising manager .....        | 15-15-15 |
| Business staff .....             | 10-10-10 |

#### Oregon State Monthly

|                                     |          |
|-------------------------------------|----------|
| Associate editor .....              | .. 5-5-5 |
| Campus news editor .....            | 25-25-25 |
| Manuscript editor .....             | 25-25-25 |
| Women's section editor .....        | 5-5-5    |
| Department editor .....             | 5-5-5    |
| Advertising manager .....           | 40-40-40 |
| Assistant circulation manager ..... | 5-5-5    |
| Assistants .....                    | 10-10-0  |

#### O. S. C. Directory

|                       |         |
|-----------------------|---------|
| Editor-in-chief ..... | 50-50-0 |
| Department head ..... | 30-30-0 |

|                                 |         |
|---------------------------------|---------|
| Assistant department head ..... | 20-20-0 |
| Manager .....                   | 50-50-0 |
| Advertising manager .....       | 25-25-0 |
| Circulation manager .....       | 20-20-0 |
| Business staff .....            | 15-15-0 |
| Collections .....               | 20-20-0 |
| Circulation staff .....         | 10-10-0 |

### Oregon State Technical Record

|                                    |          |
|------------------------------------|----------|
| Editor-in-chief .....              | 50-50-50 |
| Associate editor .....             | 25-25-25 |
| Department editors .....           | 25-25-25 |
| Editorial staff .....              | 10-10-10 |
| Manager .....                      | 40-40-40 |
| Circulation manager .....          | 25-25-25 |
| Advertising manager .....          | 25-25-25 |
| National advertising manager ..... | 20-20-20 |
| Business staff .....               | 10-10-10 |

### Social Functions

#### Military Ball

|                                |         |
|--------------------------------|---------|
| General chairman .....         | 0-25-10 |
| Chairman of subcommittee ..... | 0-15-5  |
| Member of subcommittees .....  | 0-10-5  |

#### Senior Formal

|                                |         |
|--------------------------------|---------|
| General chairman .....         | 0-25-25 |
| Assistant chairman .....       | 0-20-20 |
| Chairman of subcommittee ..... | 0-15-15 |
| Member of subcommittee .....   | 0-10-10 |

#### Junior Prom

|                             |        |
|-----------------------------|--------|
| General chairman .....      | 0-40-0 |
| Chairman subcommittee ..... | 0-15-0 |
| Member subcommittee .....   | 0-15-0 |

#### Sophomore Cotillion

|                                |         |
|--------------------------------|---------|
| General chairman .....         | 10-30-0 |
| Chairman of subcommittee ..... | 0-25-0  |
| Member subcommittee .....      | 0-15-0  |

#### Rook Dance

|                             |        |
|-----------------------------|--------|
| General chairman .....      | 25-0-0 |
| Chairman subcommittee ..... | 15-0-0 |
| Member subcommittee .....   | 10-0-0 |

### Athletics

|                          |          |
|--------------------------|----------|
| Varsity football .....   | 75-0-25  |
| Varsity basketball ..... | 25-75-0  |
| Varsity baseball .....   | 0-0-75   |
| Varsity track .....      | 0-0-50   |
| Rook football .....      | 50-0-25  |
| Rook basketball .....    | 25-50-0  |
| Rook baseball .....      | 0-0-50   |
| Cross country .....      | 0-0-40   |
| Tennis .....             | 0-0-40   |
| Polo .....               | 40-40-40 |
| Swimming .....           | 0-25-25  |
| Rowing .....             | 20-0-40  |

### Sports Managers

|                                    |        |
|------------------------------------|--------|
| Football varsity manager .....     | 75-0-0 |
| Basketball varsity manager .....   | 0-75-0 |
| Baseball varsity manager .....     | 0-0-75 |
| Assistant football manager .....   | 40-0-0 |
| Assistant basketball manager ..... | 0-40-0 |
| Assistant baseball manager .....   | 0-0-40 |
| Rook football manager .....        | 50-0-0 |
| Rook basketball manager .....      | 0-50-0 |
| Rook baseball manager .....        | 0-0-50 |

### Honorary Groups

|                      |          |
|----------------------|----------|
| President .....      | 20-20-20 |
| Vice-president ..... | 10-10-10 |
| Secretary .....      | 15-15-15 |
| Treasurer .....      | 15-15-15 |

### Social Groups

#### Fraternities

|                         |          |
|-------------------------|----------|
| President .....         | 30-30-30 |
| Vice-president .....    | 10-10-10 |
| Manager .....           | 25-25-25 |
| Assistant manager ..... | 15-15-15 |
| Social chairman .....   | 15-15-15 |
| Treasurer .....         | 25-25-25 |
| Secretary .....         | 15-15-15 |
| Athletic manager .....  | 15-15-15 |

#### Interfraternity Council

|                 |          |
|-----------------|----------|
| President ..... | 35-35-35 |
|-----------------|----------|

|                      |          |
|----------------------|----------|
| Vice-president ..... | 10-10-10 |
| Secretary .....      | 15-15-15 |

### Clubs

|                        |          |
|------------------------|----------|
| President .....        | 30-30-30 |
| Vice-president .....   | 10-10-10 |
| Secretary .....        | 15-15-15 |
| Treasurer .....        | 10-10-10 |
| Councilman .....       | 15-15-15 |
| Social chairman .....  | 15-15-15 |
| Athletic manager ..... | 15-15-15 |

### Inter-Hall Council

|                       |          |
|-----------------------|----------|
| President .....       | 20-20-20 |
| Secretary .....       | 10-10-10 |
| Social chairman ..... | 15-15-15 |

### Independent Student Council

|                      |          |
|----------------------|----------|
| President .....      | 35-35-35 |
| Vice-president ..... | 10-10-10 |
| Member .....         | 15-15-15 |

### Music

#### Glee Club, Madrigal Club, and Orchestra

|               |          |
|---------------|----------|
| Officer ..... | 30-30-30 |
| Member .....  | 25-25-25 |

#### Band

|                |          |
|----------------|----------|
| Officers ..... | 15-15-15 |
| Member .....   | 10-10-10 |

### Dramatics

#### National Collegiate Players

|                              |          |
|------------------------------|----------|
| President .....              | 30-30-30 |
| Secretary-treasurer .....    | 10-10-10 |
| Leading role in play .....   | 30-30-30 |
| Minor role in play .....     | 15-15-15 |
| Stage manager .....          | 15-15-15 |
| Assistants .....             | 10-10-10 |
| Junior Follies Manager ..... | 0-0-30   |

#### Forensics

|                       |          |
|-----------------------|----------|
| Varsity orator .....  | 30-30-30 |
| Varsity debater ..... | 30-30-30 |

---

|                                 |          |
|---------------------------------|----------|
| Rook debater .....              | 25-25-25 |
| Intramural debater .....        | 10-10-10 |
| Varsity manager .....           | 50-50-50 |
| Assistant varsity manager ..... | 25-25-25 |
| Rook debate manager .....       | 35-35-35 |
| Intramural debate manager ..... | 15-15-15 |

### General Groups

Points are awarded as follows: President, 10-10-10; Secretary, 10-10-10; Treasurer, 5-5-5.

Art club, Associated Engineers, American Military Engineers, American Institute of Electrical Engineers, Charles Eliot club, Cosmopolitan club, Daly club, Forensic club, Filipino club, Four-H club, Hindustan club, Lyceum club, Masonic club, Miner's club, Minor "O" club, Forest club, Ad club, Y. M. C. A. and Y. W. C. A.

---

Beaver rooters are sportsmen in the true sense of the word. Courtesy to their opponents is a practice of many years standing.

---

The college health service is just south of the administration building. Medical attention is free to students.

### HINTS FOR FRESHMEN

---

You are an Oregon Stater now—always boost for your college and strive to be a credit to it.

Be a loyal freshman—play the game and do what is expected of you.

Always rise when the Alma Mater is sung.

Attend all athletic contests.

Get posted on rules for "fussing."

Go to all your class meetings.

Don't begin cutting classes. It doesn't pay.

Make it a habit to attend convocation.

Learn the songs and yells in the Hand Book, and attend all rallies.

Make some activity your objective; stick to it.

Last, but not least, write home often. Do not forget the folks at home.



## Constitution of the Associated Students of the Oregon State College

### ARTICLE I

Section 1. This organization shall be known as The Associated Students of Oregon State Agricultural college.

Sec. 2 It shall consist of all undergraduate students who have duly registered in compliance with the rules of the college.

### ARTICLE II

#### Officers and Their Duties

Section 1. The officers shall consist of president, three vice-presidents, a secretary, and a yell leader, who as a whole shall constitute an executive committee.

Sec. 2. The president and secretary shall be elected from the senior class; one vice-president shall be chosen from each of the senior, junior, and sophomore classes, respectively. All officers shall be duly qualified students of the Oregon State Agricultural college, registered in a four-year degree course. No student shall be eligible to election or appointment to any student office until the name of the candidate has been certified to by the registrar's office as eligible to such honors according to college regulation.

Sec. 3. The president shall preside at all meetings, shall be ex-officio member and chairman of the executive committee, and shall execute other duties which may be incumbent upon a presiding officer.

Sec. 4 The vice-presidents shall discharge the duties of the president in his absence in the following order: from the senior, junior, and sophomore classes.

Sec. 5 The secretary shall keep a record of all meetings of the organization and of the executive committee, and at the close of the school year shall file records with the general manager of student activities.

Sec. 6 The executive committee shall require all officers to comply with the provisions of this constitution; have charge of all elections; see that all candidates for student offices are quali-

fied; fill all vacancies in office, unless a petition bearing 250 signatures shall be presented calling for a special election within 10 days after the office has publicly been declared vacant; and at all times consider the welfare of the Associated Students.

Sec. 7. The term of office of all Associated Student officers shall be one year, commencing upon the day of installation. The newly elected officers shall be installed at the meeting within 15 days following election.

## ARTICLE II-a

### Women's Organizations

Section 1. All matters of particular interest to women, not provided for in this constitution, shall be controlled by the Associated Women Students.

## ARTICLE III

### Elections

Section 1. All candidates for the elective offices of the Associated Students and its various divisions hereinafter specified, shall be nominated at a regular meeting held within the last 15 days of April. Any other qualified student may become a candidate for office, provided he presents a petition bearing the signatures of 100 bona fide students at least four days prior to election day.

Sec. 2 The general election shall be held Wednesday afternoon of the week following nomination or before the following Saturday. The date is to be determined by the executive committee.

Sec. 3 The balloting shall be held according to the Australian ballot system.

Sec. 4 All undergraduate members of the organization shall be allowed to vote.

Sec. 5. Polls shall be open from 9 A. M. to 12 noon and from 12:45 P. M. to 6:30 P. M. All qualified voters who arrive at the polls before the time of closing shall be entitled to cast their votes.

Sec. 6. All officers shall be elected by a plurality vote; in case of a tie the election shall be

decided by the executive committee.

Sec. 7. Election shall be made with reference to the prospective classes of the candidate; i.e., for an office to be held by a junior, choice shall be made at the regular election from those students who will the following year be qualified members of the junior class, as certified by the registrar.

Sec. 8. Yell Leader Elections. (a) The yell leader shall conduct a course in yell leading tactics at the start of the winter quarter. All underclassmen will be eligible for this course.

(b) The class of sophomores shall be given opportunity to try out at basketball games, track meets, and rallies, until one month before general elections, at which time the squad shall be cut to six by a committee consisting of the yell leader, his two assistants, and the chairman of the Rally committee. This cut must be approved by the executive committee before it shall become valid.

(c) These six names shall automatically appear on the ballot at the general election. The two receiving the plurality vote shall be the assistant yell leaders for the ensuing year. The third highest shall act as alternate.

(d) The names of the two assistants shall automatically appear on the ballot at the general election. One of these two shall be elected yell leader. If the incumbent yell leader is to be in college for the whole of the following year he may petition the executive committee for the right to have his name placed on the ballot.

(e) All members of the Associated Students shall vote for Yell leader and Assistant Yell leader.

(f) Any person having had previous yell leading experience in a college or university and who will be at Oregon State for the following two years, may petition the executive committee for special permission to run for the office of assistant yell leader.

(g) This section shall take effect immediately except that the executive committee shall have the power to make such exceptions as are necessary to put the system in working order and to keep it so.

**ARTICLE IV****Meetings**

Section 1. Regular meetings of this organization shall be held on a Wednesday of October and on a Wednesday of each succeeding month of the college year.

Sec. 2. The president shall call a meeting of the Associated Students at his discretion, request of the executive committee, or on written request of at least 200 students, provided they have stated the object of the desired meeting.

Sec. 3. The call of each meeting shall be announced by the president by publication in the Barometer.

Sec. 4. Two hundred and fifty shall constitute a quorum of the Associated Students.

**ARTICLE V****General Manager**

Section 1. A general manager of student activities shall be chosen by the board of control, preference being given graduates of the college.

Sec. 2. The general manager shall have supervision of the finances of all divisions of student activities, and shall have charge of and account for all property of the association. He shall also have charge of facsimilies of all emblems, medals, awards, etc., of the various divisions of student activities.

**ARTICLE VI****Board of Control**

Section 1. The President of the Associated students, the first vice-president, the secretary, two men members and one woman member elected within the last 15 days in January, one man from the sophomore class, one man and one woman from the junior class, three faculty members appointed by the President of the college, and an alumnus appointed by the board of directors of the Alumni Association, shall constitute a Board of Control. They shall be chosen annually. The President of the College shall be an ex-officio member.

Section 2. The chairman of the board of

Control shall be appointed from the faculty members of the board by the President of the college. The secretary shall be chosen from the student members by the board.

Sec. 3. The board of control shall meet at least once a month, and also at the call of the president of the board, or at the call of a majority of the members.

Sec. 4. The board of control shall approve all budgets made by respective divisions of college activities and provide for an expert audit of the accounts of each division of student activities semi-annually.

Sec. 5. The board of control shall approve all schedules of all divisions of student activities, and shall approve and grant all emblems or special awards.

Sec. 6. The board of control shall appoint the managers of various student activities. They shall be governed by the qualifications required of elective student officers. The board of control may require bond wherever deemed necessary. They shall elect delegates to the Northwest and Pacific Coast athletic conferences.

Sec. 7. Any act of the board of control may be modified or rejected by a majority vote of the Associated Students at any regular meeting provided the matter upon which action is taken shall have been presented for consideration at the regular meeting of the Associated Students next previous to the one during which action is taken; and provided, that a written petition of one-third the members of the Associated Students shall be required to bring such a matter before the association.

## ARTICLE VII

### Funds

Section 1. The funds consist of receipts of all functions of the respective divisions of the Associated Students. A fee of \$15.00 per student per year shall be collected, \$5.00 at the beginning of each quarter. All funds shall be deposited in the business office.

Sec. 2. On or before one month before the end of the third term each year, the head of each division, or sub-division thereof, of student

activities\*shall prepare a budget for the ensuing year in conference with the general manager. All budgets shall be approved by the board of control before going into effect. In case of disagreement between the manager of the division, or sub-division thereof, and the general manager, appeal shall lie to the board of control.

Sec. 3. No division shall draw on its funds except by requisition approved by the general manager.

Sec. 4. The managers of the respective divisions shall keep accurate accounts of the business of their divisions under the supervision of the general manager.

Sec. 5. Reports of financial condition of each division shall be rendered to the board of control at the end of each term by the manager.

Sec. 6. Unused funds shall remain in their respective departments.

Sec. 7. In consideration of the payment of the Associated Students fee of \$5.00 per term, the student shall be entitled to the following privileges:

(1) Subscription to the Oregon State Daily Barometer.

(2) Admission to all athletic events held on the college campus in which college teams are represented, with the following exceptions: (a) contests in addition to regular schedule. (b) Northwest and Pacific Coast intercollegiate field and track meet.

(3) Admission to the annual concerts held on the campus by the following musical organizations: band, orchestra, Madrigal club, glee club, and mandolin club, including joint concerts by two or more of these organizations.

(4) Admission to all debating and oratorical contests held on the campus in which college students participate.

(5) Admission to all numbers of the college lyceum course.

(6) To all other rights and privileges as a member of the Associated Students of Oregon State college.

Sec. 8. The division of the Associated Student fees among the various departments of student activities shall be determined by the board

of control.

Sec. 9. Class dues in amounts of 30 cents for freshman, 50 cents for sophomores, 75 cents for juniors, and \$1.00 for seniors, per term, shall be a compulsory tax and collected as part of the regular registration fee.

## ARTICLE VIII

### Intercollegiate Athletics

Section 1. The faculty members of the department shall control the affairs of the department subject to the provisions of the constitution in Article V. section 2; Article VI, sections 4, 5, and 6; and Article VII.

Sec. 2. The general manager shall fix the price of admission to all games and contests. Appeal in all cases shall lie to the board of control.

Sec. 3. The captain of the respective teams shall be elected by the members of the team concerned within 10 days after the last game played by that team. Only those men who have satisfied requirements for their letter, during the season just closed, are qualified to vote.

Sec. 4. The board of control shall award and authorize the purchase of all emblems of athletic teams as provided in this constitution.

Sec. 5. The official emblem of each sport shall be the orange block "O", which shall be mounted upon a black sweater. The official emblem shall be 7 by 5 inches outside dimensions, and  $5\frac{1}{2}$  by 2 inches inside dimensions. Captains shall wear a gold star  $1\frac{1}{2}$  inches in diameter, placed below the stripes on the sleeve of the sweater. Emblems of other sizes than those specified shall not be worn.

All senior men who have participated and earned letters for three years in a major sport shall be awarded a white sweater with no service stripes or a black sweater with service stripes.

### Major Sports for Men

Part 1. FOOTBALL. Any man playing 45 minutes in conference games or against teams of equal rank, and participating in two such games shall be awarded the official emblem of

the college.

Part 2. TRACK. Any man making five points in any one season in dual or triangular meets in which conference teams, or teams of equal rank, participate, or three points in the dual meet with Oregon, or one point in a Northwest Conference or Pacific Coast Intercollegiate association meet, or running on a winning relay team in a meet in which five institutions of equal rank are entered, shall be awarded the official emblem.

Part 3. BASKETBALL. Any man playing at least 10 minutes in each of one-fourth of the total number of halves of conference games, shall be awarded the official emblem.

Part 4. BASEBALL. Any man pitching one-fifth of the total innings against conference teams, or playing one-third of the total innings in any other position, shall be awarded the official emblem.

Part 5. The yell leader shall be awarded a black sweater upon which is mounted the yell leader emblem.

Part 6. Any man breaking a college record shall be awarded a gold medal.

Part 7. Any man winning the official emblem for three years in any branch of recognized sport, or one letter in each of three recognized sports, shall, upon graduation, receive this official badge of special honor: a blanket of college colors, measuring 5 feet by 6 feet, bearing on it the official emblem in a size measuring 12 inches high by 10½ inches wide, outside dimensions, and inside dimensions to correspond.

Part 8. Freshman meeting the requirements for major sports shall be awarded complete class numbers not to exceed 4 inches in height.

Part 9. At the recommendation of the coach the student manager, and the graduate manager, the board of control may award the official emblem to any man who has distinguished himself in a major sport, without qualifying for an award.

### Minor Sports for Men

Sec. 6. The board of control shall have power to recognize minor sports.



Section 7. Part 1. To earn the minor award in swimming a man must fulfill any one of the following requirements:

1. Win a first place or score a total of six points in meets against members of the Pacific Coast Conference.

2. Win a first place or score a total of eight points in non-conference meets.

3. Play one-half total time of all water polo games.

(Note) An intersectional meet shall count the same as a conference meet,

Sec. 7. Part 2. The official emblem for minor sports for men shall be the orange block "O" in an orange circle, which shall be mounted on a black jersey. The circle of this emblem shall have the following dimensions: outside diameter  $7\frac{1}{2}$  inches, inside diameter  $6\frac{1}{2}$  inches. The block "O" shall be  $5\frac{1}{2}$  inches by  $4\frac{1}{2}$  inches outside, and  $2\frac{1}{2}$  inches by  $1\frac{1}{2}$  inches inside.

Sec. 8. A regulation block "O" shall be presented to any minor sport man who, in the opinion of the board of control, distinguishes himself in national or international competition.

### Sports for Women

Sec. 9. Any woman student fulfilling the Athletic requirements set forth by the Women's Athletic association, shall be awarded the official emblem on approval of the board of control.

(a) The official emblem shall be an orange "O," a replica of which is on file in the office of the graduate manager, the "O" to be mounted on a regulation white sweater.

## ARTICLE IX

### Publications

Section 1. This division shall include the student publications: i. e., the Oregon State Daily Barometer, the Beaver, the Oregon State Technical Record, the Oregon State Directory, and the Oregon Countryman.

Sec. 2. The editor of the Barometer shall be chosen by a Publications board of seven members, consisting of four students and three members of the college faculty. Board members

shall be the incumbent editor, associate editor (the second choice of the board), the president of the Associated Students, one woman representative of the Barometer staff appointed jointly by the editor, associate editor and the president of the Associated Students, head of the department of industrial journalism, one faculty member of the Publications committee, and a third faculty member to be appointed by the President of the college.

The editor appointed, previous to his appointment, shall have served at least one year on the Barometer staff. The time of the appointment of the editor shall not be more than five days after the inauguration of the student body president.

Sec. 3. The editors shall in each case appoint necessary assistants and outline their duties. The editors shall be responsible for all matter printed in their respective publications.

Sec. 4. The business managers of the respective publications shall have charge of the advertising, printing, and circulation. The general manager shall supervise the work and accounts of the managers.

Sec. 5. The manager of each publication shall present an itemized statement of his accounts to the board of control each term.

Sec. 6. All salaries and other fixed expenses in conducting student publications shall be determined by the board of control.

## ARTICLE X

### Forensic

Section 1. This division shall have immediate charge of all local, intercollegiate, and interscholastic contests subject to the provisions in Article V, section 2; and Article VI, sections 5 and 6.

Sec. 2. The manager of forensics shall be chosen as provided in Article VI, section 6. The coach of oratory and debate and the general manager shall prescribe his duties.

Sec. 3. The forensic division may provide such other officers as seem desirable, to be chosen by the members of the organization.

Sec. 4. Each student representing this college

in an intercollegiate debating or oratorical contest authorized by the board of control shall be awarded an official forensic emblem as follows:

(a) The official forensic emblem for the first contest in which a student represents the college shall consist of a fine knitted sweater coat on which is mounted a scroll of black felt with an orange colored monogram of the letters "O", "S," and "C," approximately 4 by 5 inches in size, and smaller "D" or "O" mounted at the lower right hand part of the monogram according to the contest, debating or oratorical, in which the contestant shall have represented the college.

(b) The official emblem for the second contest in which a student represents this college shall consist of the official forensic emblem adopted in 1912-1913.

(c) The official emblem for the third and successive contest in which a student represents this college shall be a choice of either official award that the student earning the award shall designate.

Sec. 5. Students representing the college in an intercollegiate oratorical or debating contest for three consecutive years shall receive a gold ring, the official emblem adopted in 1915.

## ARTICLE XI

### Department of Student Entertainment

Section 1. The lyceum course, the various musical organizations, and the Collegiate Players constitute this division.

Sec. 2. The board of control shall choose the managers of the organizations as provided in Article VI, section 6. The musical organizations and Collegiate Players may choose such other officers as seem desirable to them, and outline their duties.

## ARTICLE XII

### Men's Council

Section 1. The division of student discipline shall be in the immediate charge of a student council composed of 10 members, five of whom

shall be seniors, three juniors, and two sophomores. The three class presidents, the president and first vice-president of the Associated Students, and the editor of the Barometer shall become members of the council by virtue of their respective offices. One senior, two juniors, and one sophomore shall be elected by their respective classes at their regular class elections.

(a) All vacancies occurring during the year shall be filled by the council from the classes in which said vacancies may occur.

(b) A majority of the members shall constitute a quorum.

(c) The council shall have the power to elect such officers as it may deem necessary.

(d) The council shall have the power to enforce all regulations regarding student discipline.

(e) The recommendations of the council shall be referred to the president of the college for final action.

### Women's Council

Sec. 2. The division of student discipline for women shall be in immediate charge of a women's council, composed of seven members, consisting of: the secretary of the Associated students, the president of the Associated Women Students, the vice-presidents of the senior, junior, and sophomore classes, and two representatives, one from the Greater Hall committee, and one from the Pan-Hellenic council, each elected by their respective organizations.

(a) A majority of the members shall constitute a quorum.

(b) The council shall have the power to elect such officers as it may deem necessary.

(c) This council shall have power to enforce all regulations regarding women students.

(d) The recommendations of the council shall be referred to the dean of women for final action.

## ARTICLE XIII

### Memorial Union Building

Section 1. A fee of \$3.00 per student per term shall be collected at the time of registra-

tion to be applied to a fund for constructing a Memorial Union building. All funds shall be deposited in the business office. The board of governors of the Memorial Union building and the board of regents of the college shall have control of these funds.

#### Board of Directors

Sec. 2. The board of directors shall consist of: the president of the Memorial Union, a student to be elected by the Associated Students; the editor of the Barometer; the general manager of student activities; an alumnus to be appointed by the board of directors of the Alumni Association; and a member of the faculty to be appointed by the president of the college.

Sec. 3. The board of directors, except as herein otherwise provided, shall have full power to supervise and control all activities of the Memorial Union. It may prescribe rules and regulations not inconsistent with the constitution to govern all Memorial Union activities, to govern the time and place for its own meetings, and to govern members and guests while in the Memorial Union building. It may determine by an affirmative vote of not less than five of its members when and for how long, by reason of violation of rules or regulations by a member, he shall be suspended or expelled or refused the privileges of the Memorial Union or any participation in Memorial Union activities; and it shall have power to enforce its determination. Before any such determination, the secretary shall send to the member a statement of the charges preferred against him, and, on his prompt request, he shall be granted a hearing before the board of directors or a committee thereof. It may also determine by a like vote when any such member shall be reinstated. It may fill vacancies in the membership in offices of the Memorial Union held by students. This board shall have power to appoint all standing committees and all other authorized committees. This board shall submit a financial budget for the ensuing year to the board of governors for approval not later than April 15.

#### Board of Governors

Sec. 4. The board of governors shall consist

of: the president of the Union and a student to be appointed by the executive committee of the Associated Students; one regent of the college to be appointed by the board of regents; and four members of the Union. Three of whom shall be alumni, to be appointed by the board of directors of the alumni association, to serve respectively one, two, three, and four years, for the first appointment, and thereafter for terms of four years each, and until their successors appointed in the same manner accept office. The term of members of the board of governors shall end on June 30.

Sec. 5. The board of governors shall have full control over all financial matters connected with the Memorial Union, including power to borrow money from time to time and authorize the giving of the Memorial Union's obligations, signed and secured in such manner and payable at such times as the board of governors shall determine; power to authorize a conveyance of all the property of the Memorial Union to the board of regents of the college on such stipulations and conditions as the board of governors may prescribe; power to fill vacancies in its own membership caused by death, resignation, ineligibility, or disability, the persons selected to serve until the vacancies shall be filled by the authorities designated in section 4 of this article, or until the disability shall have been removed, and power on the affirmative vote of not less than five of its members, to veto and thereby nullify any action of the board of directors which such members shall declare in a resolution to be, in their opinion, contrary to sound financial policy. It shall be the duty of this board to approve or disapprove a budget submitted for the board of directors not later than April 15 for the next year beginning July 1.

## ARTICLE XIV

### The Point System

Section 1. A limit shall be placed upon the number of student activities carried by any student. This is to insure to every activity the necessary time and attention of the student who

is responsible, either by his own choice or by election, for carrying it on, and to prevent a student from burdening himself with activities to the detriment of his scholarship.

Sec. 2. Student activities as here used shall refer to all offices, teams, societies, and organizations fully recognized by the student affairs committee or the executive committee of the Associated Students.

Sec. 3. Points shall be allotted to each activity. These points shall be based upon the time involved and work required. The executive committee shall allot the points, shall submit the first list for publication in the Barometer at least once during the first month of the fall term, and shall keep the list on file at all times in the student assembly office. After publication of the first list a four-fifths vote of the executive committee shall be necessary to change the allotment of points.

Sec. 4. An officer, known as the point system chairman, shall be selected from the senior class by the executive committee, with the approval of the student interests committee, to enforce the provisions of this article. He shall serve concurrently with the executive committee that appoints him. A unanimous vote of the executive committee, approved by the student interests committee, shall be required to remove him.

Sec. 5. Each student participating in any student activity shall within 10 days of the date of entering the activity report the following information to the point chairman: Name, class, address, telephone number, course carried in college, number of credits, and activity. If he fails to report within 10 days after date of entering activity he will forfeit all rights to participate in the activity. Vacations shall not be construed as the time elapsed.

Sec. 6. The point system chairman may appoint assistants. He shall be provided with a desk in the student assembly office. Appeals may be taken from his decision to the executive committee, but must receive four-fifths vote to be reversed or modified. Further appeals may be taken from the decision of the executive

committee to the student interests committee, whose decision will be final.

Sec. 7. The secretaries of all organizations shall submit to the point system committee a complete list of all offices and officers of their respective organizations, or any change in officers or offices within 10 days after installation of said officers or change in officers.

Sec. 8. Failure to comply with section 7 shall result in a fine of \$5.00 to be paid by the organization for each offense committed

Sec. 9. It shall be held contrary to regulation for any student to acquire more than 100 points in any one year, with the following exceptions:

(a) President and first vice-president of the Associated Students and editor of the *Barometer* who shall be permitted to act on committees required by the constitution.

(b) Members of athletic teams who earn over the allowed number of points by participation in athletic events.

(c) Students whose appeals to the student interests committee are sustained by the committee.

## ARTICLE XV

### Amendments and Miscellaneous

Section 1. Any article or section of this constitution or by-laws may be amended by a majority vote of the members (active) of the Associated Students at any meeting; provided, that the proposed amendment shall have been presented to the executive council for approval, and shall have been approved by such committee, and shall have been presented by it to a meeting at least 10 days prior to the time at which it is to be voted upon. Should the executive committee fail to present the proposed amendment, as above provided, within 30 days of its receipt of such proposed amendment, then such proposed amendment may, by a written petition of one-third of the members of the Associated Students, be presented for adoption at any meeting; provided, that the final vote upon such proposed amendment be not taken earlier than at the next regular meeting after



the presentation. In no case shall an amendment become operative until sanctioned by the president of the college.

Sec. 2. The Associated Students shall observe Robert's Rules of Order in the conduct of meetings.

### Student Manager System

Sec. 3. For each of the major sports there is a senior manager who holds office for one year. This man is selected on the basis of elimination after service of two years in the capacity of assistant during his sophomore and junior years. The number of sophomore and junior assistants will be determined by the graduate manager in accordance with the needs of the sport. From the juniors there is one senior elected to manage that particular sport. His duties vary according to the requirements of his activity, but in general he is responsible for the general progress of the sport. He is to assign duties to the assistant managers, whom he is to supervise at all times.

The junior assistant managers and the senior managers are selected by a committee consisting of the coach, graduate manager, director of physical education, and incoming and outgoing captains. Appointments are subject to approval by the board of control.

Any sophomore is eligible for the position of managerial candidate. The method of applying is merely by filing application with the senior manager of the respective sport.

An appropriately designed insignia is granted the senior manager at the close of his term of office upon recommendation of the appointing committee and the acceptance of the recommendation by the board of control.

---

### By-Laws

---

Section 1. The use of tobacco in any form is prohibited on the campus.

Sec. 2. The use of intoxicating liquors is pro-

hibited.

Sec. 3. Distinctive class insignia or wearing apparel of any class shall not be worn by members of another class.

Sec. 4. Hazing is prohibited.

Sec. 5. Freshmen shall be required to wear the green cap from the beginning of the fall term until Campus week-end with the exception of the time between Thanksgiving and the beginning of the second term.

Sec. 6. The enforcement of freshman regulations shall be vested in a duly authorized committee of the sophomore class, responsible for their actions to the student council. The method of enforcing these regulations shall be according to the policy outlined by the student council.

Sec. 7. A breach of the methods outlined for the regulation of freshmen by the council, or the application of additional requirements not herein specified, shall be considered hazing, and violation of this ruling shall, if deemed necessary, result in expulsion from the institution.

---

## Constitution of the Freshman, Sophomore, Junior and Senior Classes

---

### Oregon State College

---

#### ARTICLE I

Section 1. This constitution, when adopted as herein provided, shall be known as the Constitution of the classes of the Oregon State college, and will be automatically applicable to each succeeding class entering the college.

Section 2. Student membership in each class shall be such as shown by the records in the office of the Registrar.

#### ARTICLE II

##### Officers and Their Duties

Section 1. The elective officers of each of the

several classes shall consist of a president, vice-president, secretary, treasurer, and sergeant-at-arms, who shall constitute an executive committee of their respective classes. The freshman class shall have an elective yell-leader, and the junior class shall have an elective chairman for campus week-end.

Section 2. The vice-president and the secretary of each class shall be women. The remainder of the elective officers shall be men.

Section 3. All officers shall be duly qualified students of the Oregon State college registered in a degree course. No student shall be eligible to election or appointment to any class office until the name of the candidate has been certified to by the Registrar's office as eligible for such honors according to college regulations. Officers of a class must be members of that class as determined by Article 1, Section 2 of this document subject to the following scale:

- Freshman 0 to 45 credits.
- Sophomore 46 to 95 credits.
- Juniors 96 to 145 credits.
- Seniors 146 or above.

Section 4. The president of each class shall preside at all meetings of his class, shall appoint all committees provided for by this constitution for his respective class, and shall execute other duties which may be incumbent upon a presiding officer.

Section 5. The vice-president shall discharge the duties of the president of their class in his absence. The vice-president of the freshman class shall be social chairman of that class.

Section 6. The secretary of each class shall keep a record of all meetings of their class, and at the end of the school year shall file such reports with the graduate manager of the Associated Students.

Section 7. The executive committee shall require all officers to comply with the provisions of this constitution; see that all candidates for student offices are qualified; fill vacancies in office, except that of president, unless a petition, bearing the signature of 100 bona fide members of the class of which the office is to be filled, calling for a special election shall be

presented within 10 days after the office has been declared vacant; and at all times consider the welfare of those whom they represent.

Section 8. In case of vacancy in the office of president a special election must be held within 30 days of such vacancy.

Section 9. The following committees shall be appointed by the president of each class:

#### Senior Class

1. Social committee.
2. Memorial gift committee.
3. Senior formal committee.
4. Insignia committee.
5. Table top committee.
6. Senior graduation announcement committee.

#### Junior Class

1. Junior prom committee.
2. Social committee.
3. Insignia committee.

Such other committees as are deemed necessary may be appointed by the president at any time.

### ARTICLE III

#### Elections

Section 1. The election of officers of the freshman class shall be held at the end of Freshman Week.

Section 2. Elections of officers for the senior, junior, and sophomore classes shall be held on same day within the first 15 days of May, the date of election to be determined by joint action of the presidents of the classes concerned. Nominations of officers shall be held at least one week previous to the day of elections. Any qualified student may become a candidate for office provided he presents a petition to the executive committee of his class bearing the signatures of 100 bona fide members of his class at least four days prior to the day of election.

Section 3. In all class elections being held on the same day a joint ballot shall be used. When joint ballots are used a distinct section shall be provided for each class concerned, in

which shall be listed the offices to be filled and the candidates for such offices. Voting in more than one of these sections will invalidate the ballot.

Section 4. In case of a tie vote between candidates for any office, the executive committee of that class shall decide the election within five days, no other nominations to be made.

Section 5. Newly elected officers shall be installed within three weeks after their election.

Section 6. The balloting shall be according to the Australian ballot system.

Section 7. Names of candidates on ballots shall be rotated on each 100 ballots.

Section 8. All members of classes shall be permitted to vote, but only for officers of the class of which they are members. Membership in a class to be determined by Article I, Section 2.

Section 9. Polls shall be open from 1:00 to 6:15 p. m.

Section 10. All officers shall be elected by a plurality vote.

Section 11. Elections will be made with reference to the prospective class; i.e., for an office to be held by a junior, choice shall be made at the regular election from those students who will the following year be qualified members of the junior class.

Section 12. The election board shall be appointed by the class presidents.

## ARTICLE IV

### Meetings

Section 1. Regular meetings of each class shall be held within three weeks of the opening day of the fall term, the meeting of the freshman class as provided in Article III, section 1, not to be considered as a regular meeting.

Section 2. A president of a class may call a meeting of his class at his discretion. The president of a class shall call a meeting of his class upon the petition of 100 bona fide members of his class, provided they have stated the object of the desired meeting.

Section 3. The call of a meeting shall be announced by the president by publication in the

Daily Barometer.

## ARTICLE V

### Finances

Section 1. Class fees of 30 cents for freshmen, 50 cents for sophomores, 75 cents for juniors, and \$1.00 for seniors shall be a compulsory tax collected as part of the regular registration fee.

Section 2. Funds collected, as in section 1, shall be kept with the funds of the Associated Students, subject to the requisition to be signed by the president of the class and also by the graduate manager of the Associated Students.

Section 3. A record of all receipts, and of all expenditures, together with proper authority for such expenditures, must be furnished by the treasurer of each class to the college auditor at the end of each school year.

Section 4. All budgets for the various class functions must be approved by the executive committee of the class giving the function, and recommendations made to the Student Interests committee for final approval of those functions which come under their control by college regulations. No changes can be made in budgets without the approval of the executive committee of the class.

Section 5. All purchases of any of the four classes must be made by requisition, as in section 2. Purchases made otherwise will not be considered as valid claims against the class.

## ARTICLE VI

### Amendments

Section 1. Amendments to this constitution may be proposed by unanimous action of the four class presidents, or by petition signed by 100 freshman, 100 sophomores, 50 juniors, and 50 seniors, such petition to be presented to the four class presidents.

Section 2. In case of proposed amendments the president of the senior class shall call a special meeting of the four classes within 10 days after such proposal and present the proposed amendment to them for discussion, or to

publish the proposed amendment in the Daily Barometer on two different days within 10 days after the proposal of both.

Section 3. Amendments must be voted on within one week after being presented to the four classes assembled together, or within one week of the assembly of the four classes.

Section 4. The vote on amendments must be by secret ballot.

Section 5. At least 250 votes must be cast, and a majority must be in favor of, to pass an amendment.

Section 6. The secretary of the senior class shall act as secretary of the assembly of the four classes.

## ARTICLE VII

### Adoption

This proposed constitution is to be published in the Daily Barometer at least once before being acted upon at a student body meeting. A majority vote in favor of it at that time will make it effective at once.

---

## Oregon State Songs

---

"Carry Me Back to O. S. C.," is the song which we always rise to sing. To the old grad it brings back happy memories of his pleasant years at the "college on the hill." To the undergraduate it brings pride to his college, love of its traditions and its ideals.

### Alma Mater

Within a vale of western mountains,  
There's a college we hold dear.  
Her shady slopes and fountains  
Oft to me appear.  
I love to wander on the pathway  
Down to the trysting tree,  
For there again I see in fancy,  
Old friends dear to me.

Chorus:

Carry me back to O. S. C.,  
 Back to her vine-clad halls;  
 Thus fondly ever in my mem'ry  
 Alma Mater calls.

### Hail to Old O. S. C.

Here we come with a toast and song  
 To the college upon the hill,  
 We love its shady slopes and trees,  
 Each memory cheers and thrills.  
 But the fondest tho'ts when the years have run,  
 Will be of teams and victories won;  
 Each man a loyal son,  
 Hail to old O. S. C.

#### Chorus:

O. S. C., our hats are off to you,  
 Beavers, Beavers, fighters through and through  
 We'll cheer for every man,  
 We'll root for every stand  
 That's made for old O. S. C.  
 Rah, Rah, Rah,  
 Watch our team go tearing down the field,  
 Men of iron, their strength will never yield;  
 Hail, hail, hail, hail,  
 Hail to old O. S. C.

### Beaver Pep

Cheer for the Beavers ever,  
 The heroes of my song,  
 We will desert them never!  
 We're ready to back the Orange and Black  
 All day long—Rah!  
 Mighty in bold endeavor,  
 They fight for you and me,  
 They are the lunging, plunging, wonderful team  
 They are the men of O. S. C.

Additional songs will be supplied following  
 song contest.

---

## Oregon State Yells

---

### Siren

(Long whistle)

BOOM-AH—(pause)

OREGON STATE—(pause)

RAH



**Beavers**

B-E-A-V-E-R-S—(pause)

Beavers—(pause)

Beavers—(pause)

WOW

**Hail—Beavers**

Hail—Beavers

Hail—Beavers

Beavers—Beavers

BEA-VERS

**Yea—Team**

YEA—TEAM

YEA—TEAM

Fighting Team

Beaver Team

YEA—TEAM

**State**

|   |     |   |     |   |     |
|---|-----|---|-----|---|-----|
|   | Rah |   | Rah |   | Rah |
| S | -   | T | -   | A | -   |
|   | T   |   | A   |   | T   |
|   |     |   |     |   | E   |

|   |     |   |     |   |     |
|---|-----|---|-----|---|-----|
|   | Rah |   | Rah |   | Rah |
| S | -   | T | -   | A | -   |
|   | T   |   | A   |   | T   |
|   |     |   |     |   | E   |

|   |     |   |     |   |     |
|---|-----|---|-----|---|-----|
|   | Rah |   | Rah |   | Rah |
| S | -   | T | -   | A | -   |
|   | T   |   | A   |   | T   |
|   |     |   |     |   | E   |

Ore - Gon State

Ore - Gon State

RAH

**Oregon State**

O-R-E-G-O-N—(pause)

S-T-A-T-E—(pause)

Oregon State

Oregon State

RAH

**Beaver Chant**

B—B—B-E-A

V—V—V-E-R

BEA-vers

Beeea-VERS

(Repeat three times (locomotive fashion) start slowly, increasing speed as you go along)

## Six Rah Yells

Name.....

RAH

RAH

RAH

RAH

RAH

RAH

Name.....

## Minor Sports at Oregon State

Minor sports at Oregon State consist of tennis, cross country, and swimming and in each of these three sports schedules are drawn and run off similar to the major sports. Much campus interest centers about these sports, and each year they gain in popularity. Polo is now recognized as a special military sport at Oregon State and receives much support on the campus. At the time of publication schedules for the above mentioned minor sports are not available.

## Intramural Athletics

"Every man at Oregon State in athletics," is a slogan that is nearly being fulfilled each year. Ninety-five per cent of all the men of the institution that are physically fit are engaged in some form of intercollegiate or intramural athletic work. Each intramural sport is played in its season. The program for intramural sports extends from the beginning of the fall term until the close of the spring term.

The intramural relays enlist more than 40 teams who compete for the coveted trophy. The cross country sport affords competition for more than 500 men, many of whom develop into varsity distance men.

Representatives of more than 45 organizations enter the track and field meets each spring. Many new records are set each year by the time the all-school track and field meet is decided. An annual Thanksgiving week turkey

run is sponsored by the business men of Corvallis who give turkeys as prizes to the winners.

The 100-foot tank is open to all and is the scene of many contests. Forty teams competed in the 200-yard swimming relays for all-college title and plaque. Besides the relays an all-college swimming meet is given in every event of the sport. The compulsory swimming rule insures that every graduate from O. S. C. is proficient in swimming.

Baseball is a popular sport because it affords activity for almost every college man who wishes to represent his organization. All-school titles are also determined in horseshoes, handball, and tennis.

---

### LEST YOU FORGET

#### YOU MUST—

- Remove lid on entering any school building.
- Wear your green lid outside.
- Attend convocations.
- Support athletics.
- Respect your upperclassmen.
- Work for greater Oregon State.
- Strive for outstanding scholastic attainment.
- Consult your freshman adviser.
- Know members of varsity teams.
- Wear your rooster's lid on the days of varsity games.

#### YOU MUST NEVER—

- Smoke on the campus.
- Start a rally.
- Step on the grass.
- Wear high school pins or letters.
- Fuss at athletic events.
- Fuss on week nights.
- Leave before the end of a game.
- Sit on the senior bench.
- Wear cords or leather puttees.
- Ride bicycles on the sidewalks.

The college health service is just south of the administration building. Medical attention is free to students.

## CLASS SCHEDULE—FIRST TERM

Name..... Age..... Date.....19.....

School or Department ..... Major ..... Class .....

| Subject | Course | No.   | Cr.   | Room  | M     | T     | W     | T     | F     | S     |
|---------|--------|-------|-------|-------|-------|-------|-------|-------|-------|-------|
| 1.....  | .....  | ..... | ..... | ..... | ..... | ..... | ..... | ..... | ..... | ..... |
| 2.....  | .....  | ..... | ..... | ..... | ..... | ..... | ..... | ..... | ..... | ..... |
| 3.....  | .....  | ..... | ..... | ..... | ..... | ..... | ..... | ..... | ..... | ..... |
| 4.....  | .....  | ..... | ..... | ..... | ..... | ..... | ..... | ..... | ..... | ..... |
| 5.....  | .....  | ..... | ..... | ..... | ..... | ..... | ..... | ..... | ..... | ..... |
| 6.....  | .....  | ..... | ..... | ..... | ..... | ..... | ..... | ..... | ..... | ..... |
| 7.....  | .....  | ..... | ..... | ..... | ..... | ..... | ..... | ..... | ..... | ..... |
| 8.....  | .....  | ..... | ..... | ..... | ..... | ..... | ..... | ..... | ..... | ..... |
| 9.....  | .....  | ..... | ..... | ..... | ..... | ..... | ..... | ..... | ..... | ..... |

Basket No.....

Gym No.....

# CLAS SCHEDULE—SECOND TERM

Name..... Age..... Date.....19.....

|        | Course No. | Cr.   | Room  | M     | T     | W     | T     | F     | S     |
|--------|------------|-------|-------|-------|-------|-------|-------|-------|-------|
| 1..... | .....      | ..... | ..... | ..... | ..... | ..... | ..... | ..... | ..... |
| 2..... | .....      | ..... | ..... | ..... | ..... | ..... | ..... | ..... | ..... |
| 3..... | .....      | ..... | ..... | ..... | ..... | ..... | ..... | ..... | ..... |
| 4..... | .....      | ..... | ..... | ..... | ..... | ..... | ..... | ..... | ..... |
| 5..... | .....      | ..... | ..... | ..... | ..... | ..... | ..... | ..... | ..... |
| 6..... | .....      | ..... | ..... | ..... | ..... | ..... | ..... | ..... | ..... |
| 7..... | .....      | ..... | ..... | ..... | ..... | ..... | ..... | ..... | ..... |
| 8..... | .....      | ..... | ..... | ..... | ..... | ..... | ..... | ..... | ..... |
| 9..... | .....      | ..... | ..... | ..... | ..... | ..... | ..... | ..... | ..... |

Gym No..... Basket No.....

## CLASS SCHEDULE—THIRD TERM

Name..... Age..... Date.....19.....

School or Department ..... Major ..... Class .....

| Subject | Course | No.   | Cr.   | Room  | M     | T     | W     | T     | F     | S     |
|---------|--------|-------|-------|-------|-------|-------|-------|-------|-------|-------|
| 1.....  | .....  | ..... | ..... | ..... | ..... | ..... | ..... | ..... | ..... | ..... |
| 2.....  | .....  | ..... | ..... | ..... | ..... | ..... | ..... | ..... | ..... | ..... |
| 3.....  | .....  | ..... | ..... | ..... | ..... | ..... | ..... | ..... | ..... | ..... |
| 4.....  | .....  | ..... | ..... | ..... | ..... | ..... | ..... | ..... | ..... | ..... |
| 5.....  | .....  | ..... | ..... | ..... | ..... | ..... | ..... | ..... | ..... | ..... |
| 6.....  | .....  | ..... | ..... | ..... | ..... | ..... | ..... | ..... | ..... | ..... |
| 7.....  | .....  | ..... | ..... | ..... | ..... | ..... | ..... | ..... | ..... | ..... |
| 8.....  | .....  | ..... | ..... | ..... | ..... | ..... | ..... | ..... | ..... | ..... |
| 9.....  | .....  | ..... | ..... | ..... | ..... | ..... | ..... | ..... | ..... | ..... |

Gym No.....

Basket No.....

# FRESHMAN WORK REPORT

First hour .....

Second hour .....

Third hour .....

Fourth hour .....

If you are out for athletics (.....) have your coach  
sign here. (Football, Etc.)

Coach.....

## FRESHMAN WORK REPORT

First hour .....

Second hour .....

Third hour .....

Fourth hour .....

If you are out for athletics (.....) have your coach  
sign here. (Football, Etc.)

Coach.....



# FRESHMAN REPORT SHEET

## OUTSIDE WORKING HOURS

.....  
Employer's signature

I have voted at the following elections:

1. Fall quarter .....

2. Student body .....

3. Spring election .....

## IF OUT FOR ATHLETICS

.....  
Coach's signature

## Rook Dances Attended

1. ....

2. ....

3. ....

4. ....

.....  
**Must be stamped on each occasion by Beaver Knight in charge.**



## 1932

## SEPTEMBER

| S     | M     | T     | W     | T  | F  | S     |
|-------|-------|-------|-------|----|----|-------|
| ..... | ..... | ..... | ..... | 1  | 2  | 3     |
| 4     | 5     | 6     | 7     | 8  | 9  | 10    |
| 11    | 12    | 13    | 14    | 15 | 16 | 17    |
| 18    | 19    | 20    | 21    | 22 | 23 | 24    |
| 25    | 26    | 27    | 28    | 29 | 30 | ..... |

## OCTOBER

| S     | M     | T     | W     | T     | F     | S     |
|-------|-------|-------|-------|-------|-------|-------|
| ..... | ..... | ..... | ..... | ..... | ..... | 1     |
| 2     | 3     | 4     | 5     | 6     | 7     | 8     |
| 9     | 10    | 11    | 12    | 13    | 14    | 15    |
| 16    | 17    | 18    | 19    | 20    | 21    | 22    |
| 23    | 24    | 25    | 26    | 27    | 28    | 29    |
| 30    | 31    | ..... | ..... | ..... | ..... | ..... |

## NOVEMBER

| S     | M     | T  | W  | T     | F     | S     |
|-------|-------|----|----|-------|-------|-------|
| ..... | ..... | 1  | 2  | 3     | 4     | 5     |
| 6     | 7     | 8  | 9  | 10    | 11    | 12    |
| 13    | 14    | 15 | 16 | 17    | 18    | 19    |
| 20    | 21    | 22 | 23 | 24    | 25    | 26    |
| 27    | 28    | 29 | 30 | ..... | ..... | ..... |

## DECEMBER

| S     | M     | T     | W     | T  | F  | S  |
|-------|-------|-------|-------|----|----|----|
| ..... | ..... | ..... | ..... | 1  | 2  | 3  |
| 4     | 5     | 6     | 7     | 8  | 9  | 10 |
| 11    | 12    | 13    | 14    | 15 | 16 | 17 |
| 18    | 19    | 20    | 21    | 22 | 23 | 24 |
| 25    | 26    | 27    | 28    | 29 | 30 | 31 |

## 1933

## JANUARY

| S  | M  | T  | W     | T     | F     | S     |
|----|----|----|-------|-------|-------|-------|
| 1  | 2  | 3  | 4     | 5     | 6     | 7     |
| 8  | 9  | 10 | 11    | 12    | 13    | 14    |
| 15 | 16 | 17 | 18    | 19    | 20    | 21    |
| 22 | 23 | 24 | 25    | 26    | 27    | 28    |
| 29 | 30 | 31 | ..... | ..... | ..... | ..... |

## FEBRUARY

| S     | M     | T     | W     | T     | F     | S     |
|-------|-------|-------|-------|-------|-------|-------|
| ..... | ..... | ..... | 1     | 2     | 3     | 4     |
| 5     | 6     | 7     | 8     | 9     | 10    | 11    |
| 12    | 13    | 14    | 15    | 16    | 17    | 18    |
| 19    | 20    | 21    | 22    | 23    | 24    | 25    |
| 26    | 27    | 28    | ..... | ..... | ..... | ..... |

## MARCH

| S     | M     | T     | W  | T  | F  | S     |
|-------|-------|-------|----|----|----|-------|
| ..... | ..... | ..... | 1  | 2  | 3  | 4     |
| 5     | 6     | 7     | 8  | 9  | 10 | 11    |
| 12    | 13    | 14    | 15 | 16 | 17 | 18    |
| 19    | 20    | 21    | 22 | 23 | 24 | 25    |
| 26    | 27    | 28    | 29 | 30 | 31 | ..... |

## APRIL

| S     | M     | T     | W     | T     | F     | S     |
|-------|-------|-------|-------|-------|-------|-------|
| ..... | ..... | ..... | ..... | ..... | ..... | 1     |
| 2     | 3     | 4     | 5     | 6     | 7     | 8     |
| 9     | 10    | 11    | 12    | 13    | 14    | 15    |
| 16    | 17    | 18    | 19    | 20    | 21    | 22    |
| 23    | 24    | 25    | 26    | 27    | 28    | 29    |
| 30    | ..... | ..... | ..... | ..... | ..... | ..... |

## MAY

| S     | M  | T  | W  | T     | F     | S     |
|-------|----|----|----|-------|-------|-------|
| ..... | 1  | 2  | 3  | 4     | 5     | 6     |
| 7     | 8  | 9  | 10 | 11    | 12    | 13    |
| 14    | 15 | 16 | 17 | 18    | 19    | 20    |
| 21    | 22 | 23 | 24 | 25    | 26    | 27    |
| 28    | 29 | 30 | 31 | ..... | ..... | ..... |

## JUNE

| S     | M     | T     | W     | T  | F  | S     |
|-------|-------|-------|-------|----|----|-------|
| ..... | ..... | ..... | ..... | 1  | 2  | 3     |
| 4     | 5     | 6     | 7     | 8  | 9  | 10    |
| 11    | 12    | 13    | 14    | 15 | 16 | 17    |
| 18    | 19    | 20    | 21    | 22 | 23 | 24    |
| 25    | 26    | 27    | 28    | 29 | 30 | ..... |

OSU ARCHIVES  
For Display Purposes Only