

INSIDE ASOSU



MC Associated
Students
of
OSU

1972/73

CONTENTS

Introduction	2
Executive	4
Senate	7
Student Fees	9
Student-Faculty Committees	10
Student Unions	12
ASOSU Services	13
Educational Programs	18
Cultural Programs	23
Recreational Programs	25
Memorial Union	28

INTRODUCTION

You should know more about ASOSU, the Associated Students of Oregon State University. Student Government at OSU is no longer merely social, and that has important ramifications for you. This booklet is designed to give you the details.

ASOSU is the guiding body behind the budgeting of your \$800,000 Incidental Fee appropriation. ASOSU also reviews the \$550,000 budget for the Student Health Center. ASOSU reviews and oversees the utilization of these funds. ASOSU is your governing body. If you do not like the way your \$1.3 million is being spent, get involved in ASOSU.

ASOSU is also the recognized student voice within the University and the State. Academic innovations, policy changes and fiscal revisions are often the product of ASOSU initiative. ASOSU's complicated and sophisticated network of committees and agencies, many of which are described in this brochure, provide the impetus behind much of the student promoted actions at ASOSU. Meaningful dialogue is also maintained with the Oregon Board of Higher Education, the Oregon State Legislature and the Oregon Executive branches of Government by ASOSU. If you do not like the way education is changing, get involved in ASOSU.

"Student Power" is not an idle statement at OSU. Each term, you contribute \$18.50 toward the \$800,000 sum of Incidental Fee money. The budgeting allocation and review of this funding is wholly the responsibility of students, that is why we are able to innovate according to expressed student wishes. As an example:

- 1) In 1970, the OSU Experimental College was organized. Funded with \$10,000 annually, the college has about 60 classes each term and 2,000 students participating. Many courses are student taught. The entire program is student operated. This is the students' answer to some university needs for curriculum reform.

2. In 1970, ASOSU instituted a program providing free legal advice to any student needing such assistance. Funded with over \$21,000 of fee money, the service has expanded from one attorney to two attorneys, with a full time secretary. Any obvious

student need for legal advice has been fulfilled.

3. Finally, a real need for additional recreational facilities was made known to ASOSU. Working in conjunction with the Dean of Students office, the Administration and the Physical and Health departments, ASOSU helped provide initiative in the securing of additional facilities. Incidental Fee money, in ever-increasing quantities, now goes to Recreational Sports, Women's Intercollegiate Athletics and building maintenance. Total Incidental Fee money for student recreational activity exceeds \$92,000.

In addition, ASOSU has had a major role in the development of plans and policy for the new OSU Recreational Sports Building.

This is ample proof of the influence students have in satisfying student needs in a most direct fashion.

ASOSU is also involved in providing solutions to student demands in a more indirect sense.

Every university committee has student representation at Oregon State. These committees deal with the myriad of problems facing a large, modern educational institution. Students are listened to during committee deliberations, and ASOSU picks those students. This is one means of affecting the kinds of decisions we desire, through OSU's complex committee system of governance.

Students are represented in the State Legislature by a student lobby. An OSU student sits on the Finance Sub-Committee of the State Board of Higher Education; this committee is responsible for fiscal policy, including decisions having to do with tuition increases. A student is also one member of Oregon's Educational Coordination Council. ASOSU's City Affairs and State Affairs Task Forces work directly with the city and state governing bodies, representing student thoughts, needs and desires. ASOSU's Academic Affairs Task Force and Minority Council raise, with the appropriate bodies, questions of concern regarding educational and social direction at OSU.

These things are important. Beyond the programs and services offered by the ASOSU,

Student Government is intensely interested in seeing that students have influence over decisions that affect the quality of education and student life at this university. Traditionally, these decisions are made by the University Administration and faculty, by the State Board of Higher Education and by the State Legislature. Classes offered, the level of tuition, the quality of the Library and the Academic programs available are all areas that students should have some input. Student representation on committees and state level agencies can have an effect over decisions made.

The credibility of student input to these agencies, particularly the University Administration, has been gradually increased by ASOSU. As it has become increasingly clear that educational consumers - students - are no longer prepared to accept decisions made concerning themselves per se, ASOSU has shifted its emphases of involvement within OSU to render effective student representation within the decision making processes.

This year, ASOSU is entering new fields of involvement, as quickly as is practical, without endangering our credibility level by exceeding our bounds of expertise. Student advising and counseling, minority involvement and fiscal affairs regarding Incidental Fees are areas of major concern. Most prominent of all new efforts will be, on the university level, ASOSU's coordinated approach to academic affairs and, on the extra-university level, ASOSU's involvement in the State Legislature.

These efforts herald a new involvement and direction for ASOSU. This is a dynamic period of student government transition, and our ability to honestly and adequately represent student demands is at its highest level ever, and still rising rapidly.

If you will take but a few moments to inundate yourself with ASOSU, we think you, too, will recognize the worth of this institution called Student Government, especially with its new veneer. If you are as concerned about your future and the future of us all, READ, ON, GET INTERESTED, GET INVOLVED.

EXECUTIVE

Every Spring term, there are four ASOSU Executive positions which come up for a general student body election: President, First and Second Vice-Presidents and Treasurer. These are your student leaders who direct and coordinate student involvement, whether it be with the many areas of academics, student services and programs, or political activities, here at Oregon State University. The individuals who fill these positions are important people to get to know—if you would like to get involved in what's going on, perhaps have some ideas or programs you think could better meet the needs of our OSU community, would like to voice your concerns about particular subjects, or would like to just sit down and talk, these are the people to contact. You may call the Student Government offices at 754-2101 or better yet, drop in to talk with them. Their offices are located between the Memorial Union and the OSU Book Store. They are elected to serve you—take advantage of them!

ASOSU President

The function of the ASOSU President is quite diverse. The ASOSU President serves on four Boards of Directors: Bookstore, Intercollegiate Athletics, Alumni and Memorial Union. In addition, the President serves on the University Student Fees Committee, the University Cabinet and the Faculty Senate. Over and above the defined functions of the President, the shifting philosophies of student government dictate the President's involvement.

Currently these philosophies show the need to provide interaction between student government and the State Legislative and Executive Agencies, community organizations and administration functionaries. This is one of the ASOSU President's

principle concerns. Also, the desire to become involved in the academic considerations of OSU is increasingly motivating the directions of the President's student government efforts.

What these new philosophies herald is an understanding on the part of student leaders of the need to change the involvement of ASOSU to adequately portray student needs before the public, the State and the Administration. The ASOSU President attempts to do this through communication, involvement and innovation with a variety of people and institutions.

ASOSU First Vice-President

The primary duty of this officer is to serve as the Chairperson of the Student Senate. With ASOSU Senate meetings scheduled for every other Tuesday night, there is a tremendous amount of work to be done before and after the meetings. This individual must keep abreast of the issues and concerns of Oregon State and, when necessary, appoint ASOSU Senate ad hoc committees to resolve any problems which demand attention.

There will be times when a student will come to the Student Government offices to make a specific request (i.e. input into a policy decision, money) and it is the responsibility of the First Vice-President to help select a student Senator to represent this person at the sessions by the introduction of a resolution. Once introduced, a resolution is usually sent to a specific Student Committee to be researched and to make available a time for open informal hearings. The First Vice-President must keep in contact with these various committees at all times to insure that the needs of the students are being represented.

Following ASOSU Senate action, this officer must do whatever is

necessary for the follow-up of conducted business and the implementation of the resolutions. This includes many hours of letter writing and arranging and attending meetings with Senators and students to represent the legislation acted upon by the Student Senate. This individual will also be called upon to represent the interests of the Student Body at various meetings throughout the year, which include Corvallis Chamber of Commerce meetings, various University meetings, Student Legal advising, and many others.

ASOSU Second Vice-President

The primary duty of this officer is to serve as the student coordinator for all University committees. In this capacity, this individual recommends to the ASOSU Executive officers, and when necessary, the ASOSU Senate, the names of individuals to serve on over 40 different student-faculty University committees. Everyone who is sincere in their desire to serve on these committees is encouraged to apply at the Student Government Offices. Though most of the openings are filled by the late Spring, there are some positions available throughout the year.

A complete list of University Student-Faculty Committees may be found in a later discussion of this committee system.

The Second Vice-President also serves as a liaison between ASOSU Senate and the various committees. This position gives the student representatives the opportunity to keep up to date with the various committee activities on campus. Other duties include chairing the University Student Activities Committee and representing the OSU

students on the OSU Bookstore's Board of Directors and the ASOSU Insurance Committee.

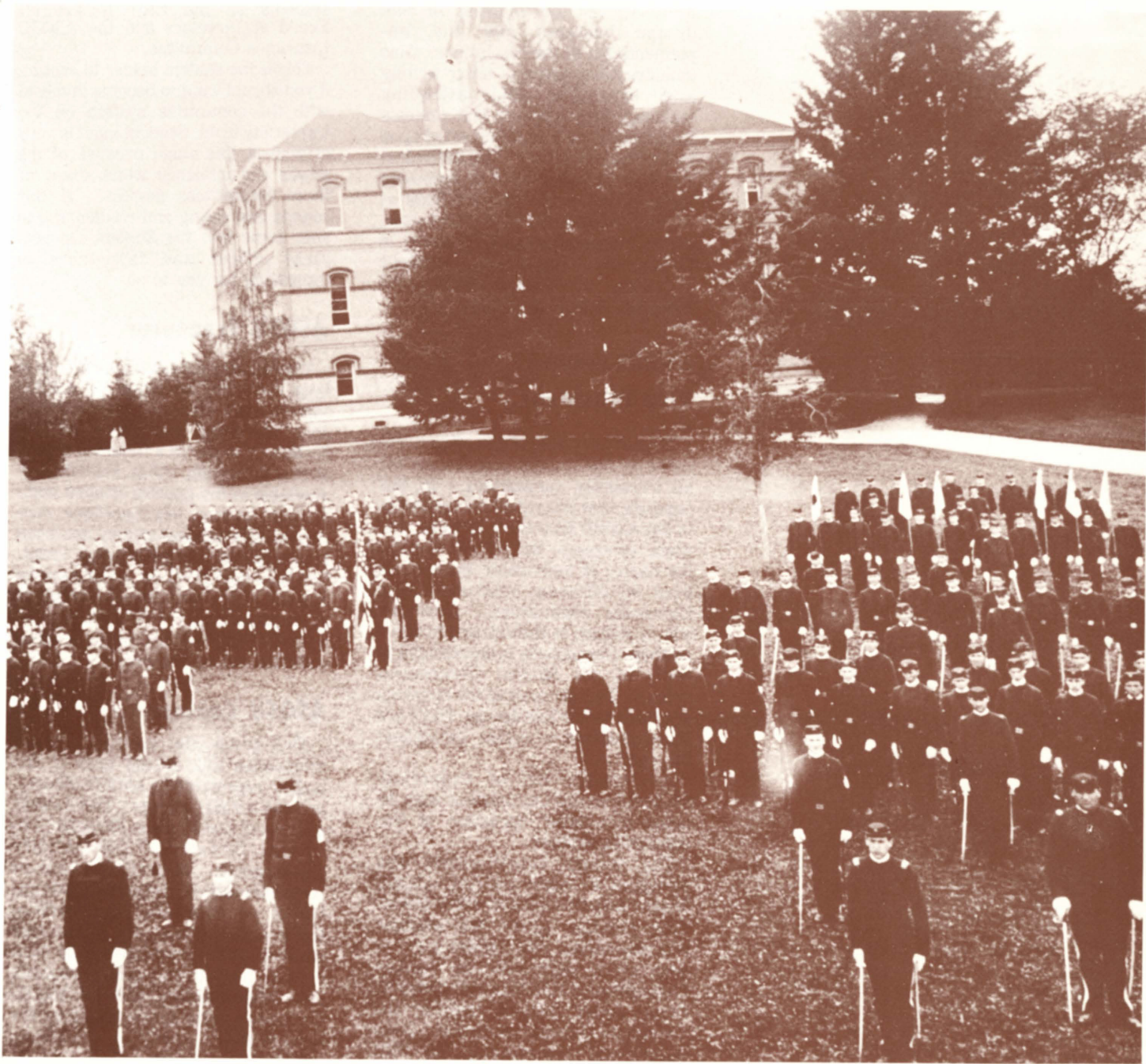
This is the student leader to contact if you should want to become involved with the committee system on the University level. Student input is very critical at this stage because of the power and influence which many of these committees possess. If this sounds interesting and challenging to you, come into the Student Government offices and talk--there is something for you to do.

ASOSU Treasurer

The primary duty of this officer is to keep a running record of all ASOSU expenditures, funds and transactions. As a non-voting member of ASOSU Senate, he presents a financial report at every meeting. This individual is available to the general student body to help answer any questions concerning how student money has been allocated and where it is being spent. One final duty involves serving on the Student Fees Committee which plays an important part in determining the budgets funded by student fees collected during the year.

ASOSU Cabinet

This group also provides a communication link among each of the bodies represented, ASOSU Senate, and the ASOSU officers. The Cabinet consists of State Affairs Director, City Affairs Director, Public Affairs Chairperson, Minorities Council Representative, Interinstitutional Union of Students Chairperson, the President from each of the four classes, one representative from each of the four living group councils, Executive Senators, and the ASOSU Executive. This group meets as the need arises.



SENATE

The Student Senate, which represents student needs and concerns, is the legislative body of ASOSU. Senators are elected every Spring term from the various academic schools, one senator for every 500 students. Every school is entitled to at least one Senator. For example, the School of Humanities and Social Science has approximately 2,690 students enrolled and is therefore entitled to 5 Senate positions. However, the School of Pharmacy only has about 480 students and therefore merits only one Senate position.

Senators are elected only by the constituents of their respective schools. With a representative from the Memorial Union, and the ASOSU 2nd Vice-President and the Senators from the 11 academic schools, the representative body of 30 members is created.

Senate sessions are held every other Tuesday night at 7:00 PM in the Memorial Union. These are open meetings, and all people are invited to attend. The duration of the meetings may be as long as four hours, depending on the number of items on the agenda to be resolved. If you should have any questions about a particular meeting, do not hesitate to contact the ASOSU 1st Vice-President.

The types of issues discussed and acted upon by the ASOSU Senate vary from meeting to meeting. Issues are introduced for ASOSU Senate consideration by the Senators at the request of their fellow students. If you should ever want an issue to be considered by ASOSU Senate, contact your Senator(s). If you do not know who they are, contact the Student Government offices (754-2101), and you will be put in touch with them. Senators also receive some excellent feedback for better representation through their respective School Councils.

Some of the recent issues which the Student Senate has considered are: a resolution calling for a halt of the bombing and mining of Indochina and for an immediate withdrawal of U.S. forces; a request for funds to support the ASOSU Minorities Council; a resolution calling for a price change of ASOSU advertising in the **Barometer**; a resolution to reorganize the Encore Committee bringing it under the direct control of ASOSU; a request for additional funding of the ASOSU Child Day Care Center; and a resolution calling for an end to OSU Athletic Department's decision to schedule one of the football games in Portland during the Fall term.

After a bill has been introduced into the Student Senate, it is sent to the appropriate ASOSU Committee for research and public hearings. These committees (Student Activities, Physical Operations, Academic Affairs, Student Government, Education Activities, Elections) are comprised of ASOSU Senators and students selected at large. A resolution may be held in committee for only four weeks-it then must be brought back to the Senate floor for action.

Another major area of ASOSU Senate and student concern involves the approval of the budgets funded by student fees. The majority of the work takes place early in Spring term and involves many hours of work. Under the existing Student Fees guidelines, the ASOSU Senate has the power to approve or reject all of the major budgets—a total amount of more than \$800,000. The entire process involves a tremendous amount of responsibility. The Student Senate is forced to decide whether the budgets as prepared and revised by the various groups are representative of the priorities and in the best interests of Oregon State University students.

It is not uncommon for the ASOSU Senate to reject some of the major budgets. When this happens, the budgets are sent back to the Student Fees Committee with ASOSU Senate's specific objections and a compromise is then reached. Students are becoming more and more aware that it makes a big difference as to where their money is being allocated--after all, \$800,000 is no small sum. For this reason, budget time is quite a challenge.

Through all of this, it is very important to realize Student Government is not the paragon of all power. Limitations must be realized. But without it, student interests would suffer tremendously from the very strong need for representation in the many aspects of this University. The University exists for the advancement of education and to meet the needs of its community. Without student input, the job would never be done.

School Councils

The various school councils offer one of the best ways for ASOSU Senators to receive the necessary feedback from their constituencies. The formation of the councils results from two sources. Some schools take it upon themselves to select various students from their departments to form a representative body. Where this is not done, the respective ASOSU Senators, as one of their duties, organize a Council.

These Councils are established primarily to involve students at this level of the University system. Their main concerns are generally with school policies, problems and projects (i.e., teacher-course evaluation, student counseling).

Because the ASOSU Senators generally work quite closely with the

councils, a channel for communication is created to allow students to voice their concerns to their Senators. Many of the resolutions introduced into the ASOSU Senate originated at the School Council level. The Senators will also report back to their Councils about pending Senate business so, as elected representatives, they may more accurately reflect the wishes of their respective constituencies when resolutions come to the Senate floor for a vote.

Most of the Councils are organized in the early Fall, but there are open positions all year long. If you are interested in this form of involvement, contact your ASOSU Senator or the Student Government Offices (754-2101).

STUDENT FEES

At the beginning of each term, Oregon State University students pay an Incidental Fee as part of their total fee cost. As stated in Oregon law, these fees are to be used to provide "for the cultural and physical development of the students at Oregon State University." The State Board of Higher Education has also mandated the amount assessed per student must be between \$15-\$25. The current payment of OSU students amounts to about \$18.50 per term. The money collected supports the following 1972-73 major budgets--included is the approximate cost per student per term and the total amount of revenue generated by such an assessment over the academic period (Fall, Winter and Spring terms): Memorial Union--\$7.20-\$312,330; Intercollegiate Athletics--\$4.60--\$200,000; Education Activities--\$3.00--\$131,210; Physical Recreation Activities--\$2.10--\$91,600; Oregon Student Public Interest Research Group (OSPIRG)--\$0.50--\$21,220; Contingency fund--\$1.10--\$46,390.

Each of the major budgets, except Intercollegiate Athletics, is further broken down into minor budgets which are submitted late in Winter term to their respective governing boards. For example, the ASOSU legal Advising Committee submits their requested operational budget to the Educational Activities Committee for review. Each major budget committee is then compelled by statute to hold open hearings on all minor budget items for the University student body. It is important to note that these review boards, again with the exception of Intercollegiate Athletics, have a student majority.

These budgets, totaling over \$800,000, are then forwarded to the Student Fees Committee for its action. This committee, again the majority of its members being students, includes the ASOSU

President and Treasurer, Memorial Union President and Treasurer, two students elected at large during the Spring term elections, and three University Administrators (Dean of Students, Dean of Administration, and a University Budget Officer). This Student Fees Committee then attempts to put the budget requests in perspective and make necessary adjustments. Open hearings on the major budgets for OSU students are again conducted in accordance with OSU Student Fees Committee statutes. After this action, the major budgets are forwarded to the ASOSU Senate.

Now the whole procedure becomes exciting! According to the Student Fee guidelines, the ASOSU Senate may accept or reject each major budget. Because this is the last formal public hearing in which the OSU community may participate to affect change in the budgets, the politicking and debate usually becomes quite extensive. For those groups which are unsatisfied with the treatment their budgets have received thus far, this meeting is their last chance to attempt a change.

In the event ASOSU Senate rejects a major budget, it will be sent back to the Student Fees Committee with the Senate's specific objections. ASOSU Executive Committee will then meet in a joint session with the Student Fees Committee to develop a compromise agreement.

Such a system insures that all parties concerned are given an adequate hearing period and provides the protection that students have a majority voice in deciding just where their fee money goes. Following this final appellate procedure, the now final student fees budget goes to the University President. Any questions concerning this procedure should be directed to the Student Government offices, (754-2101).

STUDENT-FACULTY COMMITTEES

Students at this University have a great opportunity to initiate change at many levels of the campus administration. By serving on University student-faculty committees, a student has the opportunity to help the University help the student. University student-faculty committees are responsible for formulating policies in various areas of campus administration, and serve as the official means by which students and faculty participate in the governance of the University.

Some brief examples:

Anti-Discrimination--hears and adjudicates complaints on discrimination.

Campus Planning--advises on campus development

Curriculum--recommends introduction of new educational programs and recommends major curricular changes.

Intercollegiate Athletics--formulates athletic policies and procedures.

Student Traffic Court--Student traffic violations cited by the campus police may be appealed to this court.

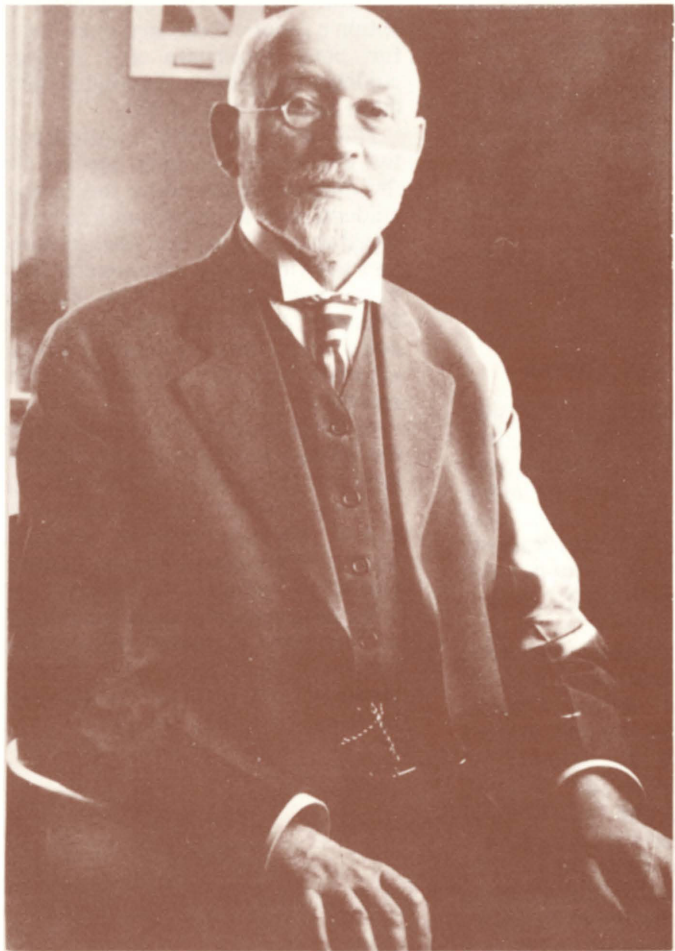
University Discipline--is the original jurisdictional body for disciplinary cases.

There are many more committees of interest explained in short summary form in the Oregon State University Student Handbook. Any student that is a full time student, not on probation, may serve on any student-faculty committee. Applications may be found in the Student Activities Center, to be filled midway through Spring Term. Also, questions concerning specific student-faculty committees may be answered at the Student Activities Center.

The following is a list of student-

faculty committees. Check the Barometer for notices of committee openings throughout the year.

Academic Advising
Academic Requirements
Academic Reviews and Appeals
Advancement of Teaching
Anti-Discrimination Board
Broadcast Media Committee
Campus Plan
Classroom Television
Commencement Week
Committee on Committees
Computer
Convocations and Lectures
Corvallis-OSU Music Association
Curriculum Committee
Educational Activities
Educational Media Coordinating
Committee
Examinations
Facilities Planning and Use
Committee
Financial Aid
Human Rights Commission
Incidental Fees Committee
Intercollegiate Athletics
International Education
Library
Memorial Union Board of Directors
New Student Programs
Recreational Sports
Registration and Scheduling
Special Services
Student Activities
Student Conduct
Student Discipline and Appeal Board
Student Housing
Student Publications
Student Recognition and Awards
Student Services Advisory Council
Student Traffic Court
Traffic
Undergraduate Advisory Council
University Alumni Association Board
of Directors
University Cabinet
University Discipline
University Health
University Honors Program



Feminist Movement

The Feminist Movement at OSU is largely based in several consciousness raising groups which have begun from the experimental college and continued on their own. Women have grouped together to work on special interest projects such as job discrimination and non-sexist child raising. A woman's speakers bureau has also been formed. This bureau is set up to go to local schools and have speakers attend classes to talk about the women's movement. There has also been a group of faculty women meeting regularly. They have been active in helping to establish classes for and about women through the liberal studies program.

Chicano Student Union

The Chicano Student Union was formed to encourage Chicano student enrollment and to provide and promote Chicano culture, including ethnic values, Chicano unity, and general welfare of Chicano students on the University campus and members of the community.

The following activities, sponsored throughout the school year, to work toward promotion of the Chicano culture: Sponsoring Mexican dinners to raise funds for the annual "La Fiesta Del Cinco de Mayo" celebration during the first week of May; "La Fiesta del Cinco de Mayo", an annual event to politicize the Chicano community, the campus community and the white majority society to the extent of racial persecution which has existed in the U.S.A. for more than a century.

Foreign Students Association

At Oregon State University, the large number of foreign students from all parts of the world have become an integral part of the campus life. This provides an excellent opportunity to obtain a great educational experience for both American and foreign students by getting acquainted with other nations' way of life.

The Foreign Students Association at the University has been formed for the purpose of providing the foreign students with an opportunity to come together and bring the student body and the University community their voice and opinion. The Foreign Students Association also promotes better understanding between foreign students and the University community.

At the present time there are nearly 650 foreign students coming from 67 different countries to attend OSU; all of these students are members of F.S.A. Through various activities such as international events, national festivals, cultural exchanges and other programs, this association helps to promote a closer relationship between American and foreign students. Additional information may be found by calling 754-3006.

ASOSU Legal Counseling

The ASOSU Legal Counseling Service is available to Oregon State University students who are currently enrolled at the University for advice on his or her legal problem. The legal counselors and secretary are employed out of ASOSU funds and there is no fee to the student utilizing the service. Information related to the counselors is privileged and is kept confidential.

The purpose of the Legal Counseling Service is two-fold: counseling and referral. The legal counselors counsel the student of his or her legal rights or duties or what he or she should do or not do in a particular situation. They do not represent the student in court or in administrative proceedings or prepare legal documents. In addition, the legal counselors assist the student in referral to a specialist, where necessary, to a private attorney, to an appropriate regulatory or other governmental agency, or to an appropriate University body in order to pursue a University-oriented grievance.

The student must confer with the counselors in person. Although a student may "drop in" to see if a counselor is available, appointments are encouraged in order to avoid waiting. Appointments may be made by dialing 754-1165 or 754-2101, or come in personally at the Legal Counseling office located at the base of steps near the west entrance to the bookstore and across from the Student Activities desk in the Memorial Union.

Student Fee Allocation: \$20,100.

Public Relations

Public Relations and Public Affairs are now combined under the single heading of Public Relations for ASOSU. The Public Relations Office

still serves the dual function its previous two titles suggest.

As the arm of ASOSU, this office sponsors and promotes speakers, forums, panels and information that is of interest to students at Oregon State.

With less committed money to set ventures, this enables ASOSU to being to campus issues and people of current concern to students. Input and suggestions from the student body is highly regarded in this respect.

The second function of the Public Relations office is, simply, public relations. Beginning this year, ASOSU's Public Relations office will attempt to promote greater student interest in ASOSU by more fully telling the ASOSU story. Additionally, it is our earnest desire to circulate more information about OSU and ASOSU among the general public of Oregon. By more adequately telling the students' story, both to other students and to Oregonians, we hope to spark a better understanding and interest in ASOSU.

The Public Relations Office is located in the Upper Activities Center.
Student Fee Allocation: \$4,000.

OSPIRG

The Oregon Student Public Interest Research Group, OSPIRG, is a state-wide organization of college students interested in investigating consumer and environmental problems. Using student funds, OSPIRG hires a professional staff to work with and guide students on research in these areas. It's a new answer to an old problem: students are deeply concerned about societal problems, yet often do not have the time (being full-time students) or the expertise to effectively deal with these problems. OSPIRG offers a way around this difficulty.

The State Board, made up of student representatives from each campus,

hires the staff and establishes the policy and direction of the corporation. The staff, extensively, helps students with research, organizing, and coordinating projects approved by the State Board.

At Oregon State University, students have participated in a wide variety of projects. Investigations of dangerous toys, research into Oregon's predator control program, a study of Oregon's policies governing recreation, a survey of student attitudes toward off-campus housing, and an investigation of the construction qualities of one of OSU's dorms, are examples of some of the projects. OSPIRG maintains a list of over 60 projects students may work on through classes or as individuals. New ideas are encouraged.

OSPIRG has proven to be extremely successful. For every professional staff person hired, there is a number of students willing to lend their time and energy for creating and carrying out projects of concern to students and the Oregon public. The educational value and effectiveness of OSPIRG will grow exponentially in relation to the number of students and professional staff involved.

The OSPIRG office is located in the Lower Activity Center, telephone 754-3600 or 754-2101.

Student Fee Allocation: \$21,000.

Eco-Alliance

Eco-Alliance is an OSU recognized student organization with its primary concern being the promotion of environmental awareness and the new environmental ethic. Originally, Eco-Alliance was formed out of an honors colloquium on the environment in the Fall of 1969. Eco-Alliance produced a week-long program for Earth Week during April of 1970, featuring nationally and internationally

prominent speakers on environment, pollution, population and other related subjects. An environmental art show and movie festival were other attractions.

Since that time Eco-Alliance has organized on a task-force basis. In this basis any student can come to Eco-Alliance with some project or particular area of environmental concern in mind, and put his or her interests to work in either an existing task force or create a new one tailored to the student's own design. In the past, in addition to Earth Week 1970, Eco-Alliance activities have included setting up an environmental speakers bureau, an abortion referral service, movie program, debates and forums, general dissemination of environmental awareness information and a recycling project.

The recycling project is the largest single project currently in progress. It is dedicated to the promotion of an anti-waste ethic through re-use and recycling. This section of Eco-Alliance functions not only at the University level, but in the greater Corvallis community, Mid-Willamette Valley region and at the State level as well.

Eco-Alliance Recycling is a well-known and established segment of the local area providing a community recycling service for two years. Its reputation for expertise in this field is wide-spread. Eco-Alliance members serve on a Regional Solid Waste Model Plan Committee that is drawing up plans for the future handling of solid waste in the Mid-Willamette Valley. The Eco-Alliance Recycling Project is one of the most developed in the State and has assisted other projects throughout the state and answered letters requesting advice from recycling groups in such places as Hawaii, California and Washington.

Eco-Alliance is open to all, young and old, student and non-students, to develop and express their ideas and concern for protecting and improving our environment. Additional information is available by contacting Eco-Alliance at the Student Activities Center in the MU, phone 754-2101.

Minorities Council

The Minorities Council was established at OSU in the Spring of 1972. The need to establish an effective means of communication among the minorities and between ASOSU was recognized, and this need is being partially met with the Council's establishment.

The Council has six specific purposes: 1) serve as a student - Student Government link for minorities; 2) help provide minority tutoring; 3) establish a system of student-to-student counseling; 4) work with the University in recruitment programs; 5) help develop minority oriented programs and 6) to provide for minority social involvement. Under the council's auspices a concert will be held at OSU to raise additional funds for further council involvement in OSU. The council members, including two Blacks, two Chicanos and two American Indians are involved in promoting minority concerns at OSU. Efforts by the council are also being made to satisfy these concerns.

Minority cultural center facilities are being sought and an extensive student-to-student recruitment program in Oregon and Washington is being proposed, both operations being an integral part of the ASOSU-Minority Council efforts to assist minorities on campus.

Such coordinated efforts have proven their worth, as well. A \$3,900 scholarship program, with \$1,300 accruing to each minority group, was

initiated by ASOSU last year at the cooperative urgings of OSU's minority groups. This singular effort has provided the impetus for those purposes and projects of the council outlined above.

The minority Council Office is located in the Upper Activities Center.
Student Fee Allocation: \$600

Draft Information Center

ASOSU established a Draft Information Center in 1971 to provide answers to student questions concerning the Military. The Center provides free counseling and free literature on deferments, conscientious objection, military obligation and laws regarding the draft. The Center is operated by students knowledgeable about the selective service system and they are sympathetic to draft-age problems.

The center is provided as a free student service. Although there are currently fewer questions about the Military per se. The Draft Information Center provides a focus for such interest and has shifted its function to meet this new student need. The Draft Information Center is located in the Lower Activities Center, or may be reached by phone at 754-3600.

Student Fee Allocation: \$1,200.

Academic Affairs Task Force

The Academic Affairs Task Force studies and evaluates Academic policies, regulations, curriculums and programs in an effort to measure Oregon State's effectiveness in responding to educational needs. The Task Force initiates academic proposals and student programs, as well, attempting to improve the

educational climate at OSU from the student's perspective.

The primary objective of the Task Force is to provide a student channel to coordinate student involvement in the initiation of educational change within OSU.

The Task Force also has among its duties the reporting of academic information to the ASOSU Senate and the administering of the National Student Exchange.

The Academic Affairs Task Force currently works out of the ASOSU President's Office in the Activities Center.

ASOSU City Affairs Task Force

The City Affairs Task Force is composed of concerned and responsible students who have represented and served the student body in several capacities. It is totally unique to Oregon State University and to Corvallis, in that no other organization of its kind exists in the United States.

Students in related fields of expertise represent ASOSU on the City Council Standing Committees and other administrative boards and commissions throughout the City, such as the City Parks and Recreation Board and the Planning Commission. Representatives from the campus media (Barometer and KBVR-FM) have functioned as consultants to direct and advise the Task Force in matters regarding communication.

The primary function of the City Affairs Task Force is to serve as a communications link between the city and county governments and the student body of Oregon State University, as well as with the business community. While serving in this capacity, the Task Force has

engaged in levying constructive criticism and creating public policy, has served as an information collection and dissemination source, and has generally promoted the interests and well-being of students as citizens of Corvallis.

The City Affairs Task Force invites you to accept the challenge and participate. For information please call the Activities Center in the Memorial Union, 754-2101.

Student Fee Allocation: \$300.

State Affairs Task Force

Every odd numbered year, Oregon's elected lawmakers meet in Salem to decide which laws to retain, which ones to abolish, or simply those that need to be amended so as to bring them up to date. During this six-month-long process, it is a fairly safe assumption that something within the State System of Higher Education will be affected, if no altogether changed. In past sessions, Oregon State University has had its opinions expressed through an administrator who adopts the role of a legislative advocate. Now, for the first time, the students (the very reason the University exists) are having their views put forth by their own peers: The ASOSU State Affairs Task Force.

This unique office is made up of sixteen students, whose job it is to speak on the issues of student concern to the legislators. The primary job that the State Affairs Task Force faces is in pouring over all the bills that are introduced daily and deciding which ones will affect the student population to the largest extent. Once this is done, then it is a matter of researching the bill. This includes not only compiling information about the bill but conducting surveys to find out how students feel about a particular issue. This is an important aspect,

since the surveys are the chief means by which the Task Force finds out student opinion. The follow-up of all this is speaking to the individual legislators and testifying at committee hearings.

The list of bills that the State Affairs Office is presently working on is fairly extensive, so here is a brief rundown of some of the issues that are of concern to a major portion of the university community: SB 27, SB 18 - lowers the age of majority; SB 1 sets basic goals for education, includes higher education; HB 2147 puts students on the State Board of Higher Education; SB 198, payment of tuition on a monthly basis; SB 48 - Marijuana, erases convictions that were handed down when it was a felony only, and SB 77 - revision of existing environmental laws; Tenure - a House Bill not yet numbered - has to do with insuring student participation in the granting of tenure; Birth Control - SB 172 - requires counties to provide services; HB 5035 - puts students on the State Scholarship Commission.

This list is by no means complete. New bills are being introduced daily, and those bills that have been presented will, in all probability, be amended before they are passed, (or defeated), on the floor of either house. If you have a personal interest in any of these issues, you are encouraged to contact the State Affairs Office and voice your opinions. (Student Activities Center, Memorial Union, 754-2101)

Y-Round Table

The Y-Round Table is a campus YM-YWCA, as well as being a recognized student organization at OSU. The purpose is to increase social awareness through volunteer social concern. Many projects have been in conjunction with the Experimental College such as the

current "court-watching" project, which involves volunteers observing local municipal court proceedings, to see how justice is administered in Corvallis. Other activities include fund raising projects such as selling UNICEF cards and a natural foods fair.

The office is staffed by one full-time professional and one part-time person as well as having work study people, Neighborhood Youth Corps, plus volunteer help.

One of the new programs is a limited day care center, funded by student fees (\$3,000), which operates nine hours each week. The center has four professional staff people as well as volunteer help for approximately thirty children each term. The center has children enrolled from ages nine months to five years. The children are divided into two groups and there is program developed for each group. The only requirement for parents to enroll their children is that one of the parents be enrolled as an OSU student. Parents are also asked to pay \$15 per child per term as well as donate several small items to the center. A search for funds is also underway for funds to extend the center to a full time one.

Another of the programs is the phone. The VD phone information referral will provide medically accurate information and where and how a person can get treatment for VD.

Some of our other programs include Big-Brother, Big-Sister, College Friend, day care volunteers, Physically Handicapped and Mentally Retarded Swim, adult MR tutors, tutors for junior and senior high students, and a Senior Citizens Program. People who would like more information about these programs can contact the Y-Round Table in the lower activities center or call 754-3041. **Student Fee Allocation: \$1,000.**



Peer Advising

Peer Advising at OSU is in the developmental stages, with a projected opening date of operation, Spring Term 1973.

The philosophy and concept behind Peer Group Advising is relatively simple. ASOSU sees and has been told of a need for student-to-student advising, particularly for freshmen and sophomores and transfer students at OSU. Students unacquainted with OSU have questions about courses, professors and procedure which only someone who has gone through the system can answer. The desired goal is to provide knowledgeable students with adequate references to answer these kinds of questions.

Students from each school on campus will be available for giving consultation and help. This consultation and help is recognized as being "unofficial" in terms of OSU Academic Policy and regulation, but we do feel it will systematize and make available the kinds of good student advice already being given on campus in informal circumstances.
Student Fee Allocation: \$300

Experimental College

The Experimental College was established at OSU in 1970 to expand the educational environment. The idea for this type of educational experience was generated by the 1968-69 ASOSU Senate with the hope of providing a more personal and involved learning experience. The college stresses the active participation of the entire University community, including students, faculty, administrators, and Corvallis residents. All participants perform an instructional function by contributing their individual thoughts and opinions.

Four main goals have been outlined to indicate the general aims of the Experimental College. The first goal is to create a situation in which members of the University community have the opportunity to initiate instruction in areas of their particular interest which may currently not be available to them.

The second goal is to offer classes through the Experimental College which will differ significantly from regular University classes in that they will utilize various experimental educational methods. Other classes, particularly the workshops, will be designed to develop individual talents and interests.

The third goal is to provide a testing field for possible additions to the regular course offerings in the University curriculum. In this aspect, the Experimental College has the potential to serve as a mechanism through which the University curriculum may be reviewed and revised.

The fourth goal, and perhaps the most important, is to dedicate the Experimental College to providing an opportunity for the entire University community to come together, i.e., to facilitate personal interaction among students, faculty members, administrators, and Corvallis residents with the hope that a high degree of communication be established.

Yet, the Experimental College is unique at OSU in a number of other ways. The College is totally administered by students and offers in excess of 60 courses per term. Offerings range from craft skill development to esoteric involvement. All classes are non-credit, no grade programs, and only the incidental cost for materials is charged for participating.

Student Fee Allocation: \$10,000

OSU Tutorial Program

ASOSU, through the Educational Activities Committee, and Student Incidental Fees, supplies the monetary backing for Oregon State's student tutorial program.

The program, run during the nine month academic year and coordinated by the Dean of Students Office, is an invaluable service to students of all disciplines at OSU. Tutoring programs are generally held during the evenings and are operated by paid graduate students.

Additional information may be acquired by calling 754-3661.

Student Fee Allocation: \$3,000.

National Student Exchange

The National Student Exchange (NSE) was first initiated in the Fall of 1972 at Oregon State. Study of and application to the NSE had begun in 1971. Currently, NSE is an association of 19 United States universities and colleges located throughout the continent. The purpose of NSE is to provide an Intra-American Exchange avenue for students, while circumventing out-of-state tuition costs. Schools within NSE exchange students on a one-to-one basis, causing transportation to be the only additional cost incurred by the student during an exchange.

The NSE program is co-coordinated by the Dean of Undergraduate Studies Office and the ASOSU Academic Affairs Task Force. The program is located in the ASOSU President's Office in the Activity Center.

Student Fee Allocation: \$300.

Independent Study Program

For students who are interested in a particular subject, but find it is not offered at OSU, independent study may be the area they are looking for.

Independent study may entail studying environmental problems and ethics; conducting scientific research with a sponsoring faculty member in any one of a number of fields such as psychology or science; studying Greek folkdance, music and art; living on the ocean; or woodcraft, etc. It is whatever the student wants to make it. **Anyone** willing to learn something new can do independent study.

The Independent Study Steering Committee may be able to help the student find a faculty member who shares his interests and will aid him to get academic credit for his work. The Committee can also direct the individual to financial support which could cover project costs. If we can help you, come and see Dr. Dale Simmons in the Psychology Department for more information.

Student Fee Allocation: \$250.

Forensics Program

The OSU Forensics program, sponsored by the Department of Speech Communication and ASOSU, offers opportunities for participation in the following activities:

1. **Tournament competition.** Emphasis in this aspect of the program is placed on the development of research, thinking, and speaking skills. Speakers interested in competition may participate in debate and a variety of individual events.

The OSU Forensics Squad travels to tournaments in the Northwest, California, and the Rocky Mountain States. Previous experience, while desirable, is not required for participation in these activities.

2. **Inter-university competition.** Each year OSU students compete with students from the University of Oregon in the Hugo Black Memorial Debate. This event is designed to

honor the memory of Justice Black, one of the foremost defenders of civil liberties ever to serve on the Supreme Court. The debate is conducted at OSU every other year. Distinguished Oregonians serve as judges for this event. Participation is open to all OSU students.

3. **Campus and community speaking.** This program consists of presentations to campus, club, and high school audiences. Emphasis is placed on the ability to develop and articulate a position on a general topic of current interest. These programs include a question-answer session which allows participating students to improve their ability to defend their positions and to gain an understanding of attitudes which exist in non-competitive speaking situations.

Academic credit for participation in forensic activities is available through the Department of Speech Communication. Participation is open to all regularly enrolled students. For further information contact the Department of Speech Communication, Shepard Hall, 754-2461.

Student Fee Allocation: \$3250.

Model United Nations

Model United Nations is a co-curricular activity sponsored and financed by ASOSU, the political science and speech departments. Academic credit may be earned by participation in various conferences. The main objective of M.U.N. is to create a better understanding of the problems that occur in the world and allows the student an opportunity to initiate solutions.

M.U.N. is an activity class facilitated by students in which each student acts as a representative for one of the various nations which are members of the real U.N. As representatives, the students

research the actual policies of the country they represent, and present these views in model sessions of the various U.N. committees.

The University M.U.N. attends two conferences during the school year at Lewis and Clark College, in which vital issues are discussed before a model committee of the Security Council. Oregon State also attends a Regional Conference with approximately 25 other universities in the Northwest, in which all aspects of the actual U.N. are simulated.

An annual conference is attended by the OSU M.U.N. chapter, which lasts four days and occurs during Spring term. Approximately 100 universities and 1,200 students from the Far Western states join together to conduct a model session of the United Nations. During all the conferences the University M.U.N. chapter attends, the objectives are to meet other students from other universities, to get a better understanding of the serious problems confronting the world today, and join together in trying to create solutions for a better tomorrow.

For further information call 754-2102 or see us in the Student Activity Center.

Student Fee Allocation: \$2,390.

Convocations and Lectures

Convocations and Lectures is a University committee which selects speakers and makes arrangements for the all-campus programs. Convocation speakers are of national or international reputation which appeal to the entire campus community, and appear in Gill Coliseum. Some of the speakers we have had the opportunity of presenting include Dick Gregory, Bernadette Devlin, and Supreme Court Justice William O. Douglas. University lectures are those with a

more specialized appeal and are presented in the Home Ec auditorium.

The committee works with an annual budget of \$9,800, \$5,300 of which comes as a special grant from the University President's office and \$4,500 from Incidental Fees. Membership in the committee consists of eight voting faculty, six voting students and the manager of Public Events as ex-officio and non-voting.

Further questions may be answered by calling Student Publications and Public Events, 754-3374.

Student Fee Allocation: \$4,500

KBVR-TV

KBVR-TV offers on-the-job experience to any student interested in broadcasting and related areas.

KBVR-TV is a student managed and staffed television station operating from the second floor of Shepard Hall. Its programs are created, produced, directed, and staffed by students.

The shows students produce are seen by a combined campus and community audience, over cable channel 11, four nights a week, with sports broadcasts on weekends. Programming is designed to please both audiences.

KBVR-TV is receptive and open to all suggestions and comments concerning programs either on the air or not on the air.

For additional information, please call 754-2008.

Student Fee Allocation: \$5,560.

KBVR-FM

Oregon State University's radio station, KBVR-FM, offers experience to those interested in broadcasting and affiliated areas. The two main purposes of the station are to offer on-the-job training and present to the campus and surrounding community a public service of music, sports and

news reports, and various other public service programs. KBVR encourages all suggestions students may have to improve the station's programming.

KBVR-FM is an educational station, authorized by the Federal Communications Commission, and is not allowed to advertise or in any other way gain funds for subsistence. As a non-profit making student organization, it is essential for student funding to maintain and purchase all equipment.

If you have any questions or are interested in the program please contact Shepard Hall, 754-3522.

Student Fee Allocation: \$4,265.

Barometer

The **Barometer** is a student run newspaper published Monday through Friday by the Associated Students of Oregon State University.

It operates on an annual budget of approximately \$110,000, of which \$45,000 comes from student subscriptions. The subscriptions are assessed through incidental fees.

The **Barometer's** major objective is to publish a newspaper that gives the most thorough coverage possible within the limits of its budget. The paper's coverage is primarily the University, with added coverage given to local and state events that the editors feel are of interest to students. The **Barometer** also gives daily capsulized coverage of national and international events through the services of United Press International.

All students are welcome to work for the **Barometer**, regardless of journalistic background. Interested persons are encouraged to go to the **Barometer** offices in MU 204 or call 754-2231.

Student Fee Allocation: \$45,500

Beaver

The **Beaver** is not just another yearbook . . . it's your book.

Put together by some of your friends, it will help you remember OSU – the concerts, people, sports, politics and just a whole lot of things that are typical of OSU.

You can buy the **Beaver** at registration or in the **Beaver** office. The book is distributed Spring term.

Salaries and up to 12 hours of journalism credit can be arranged for working on the **Beaver**. Staff interviews are held spring term.

If you're interested in your book, either to work or just see how it's put together, drop by the office – Ag Hall 228. Or call – our phone number is 754-3501.

Prism

The OSU **Prism** is a student-operated, student-funded publication which seeks to promote the fine arts and all types of creative thought on the OSU campus. **Prism** publishes student poetry, fiction, non-fiction articles, artwork, and photography once each term during the regular school year. The magazine offers a chance for all students to have an outlet for their creative work, and also the chance to gain practical experience in publishing procedure through work on its editorial and business staffs.

Prism is a University-wide publication funded by ASOSU as an educational activity. Participation in this activity is not restricted to students of any specific department or school on campus.

The **Prism** office is in Ag. Hall 409.
Student Fee Allocation: \$1,625.



Music Association

The Corvallis and OSU Music Association probably represents the best bargain students get at the University. For an allocation of 75 cents per student per year from Incidental Fee money every OSU student is a member of the association and is entitled to go to any or all of the six concerts presented each year in Gill Coliseum. Faculty and townspeople pay \$8 for season tickets.

Outstanding artists and groups are scheduled on this series with an annual budget of some \$20,000. The attractions are selected by a Talent Selection Committee which includes four voting OSU students. World famous soloists and groups such as the London Royal Philharmonic Orchestra, Stockholm University Choir and Ukranian Dancers are included on this series.

Additional information on the program may be obtained by calling 754-3374.

Student Fee Allocation: \$11,500

OSU-Corvallis Symphony Orchestra

This group represents one of the major musical organizations of the University. Comprised, generally, of 85 to 90 players, it is open to all qualified instrumentalists and has in its ranks each year a large number of students from many different departments. In order to accomodate as many interested participants as possible, rehearsals are generally held only one evening per week so as to avoid conflict with regular class activities. Regular concerts of the "heavy" classics are presented in the Memorial Union, as well as in other places both on and off campus.

Student Fee Allocation: \$2,500

Encore Committee

The Encore Committee, a standing ASOSU committee, was formed to put on all contemporary music concerts on campus. The committee tries to sponsor two to three concerts per term in Gill Coliseum for crowds numbering 6,000 to 10,000.

Concerts in the past have offered Rare Earth, Stephen Stills and Manassas, Jesus Christ Superstar, America, Fifth Dimension, John Denver and many more.

For more information, Encore members are present at the MU Activities Center during the day.

Small Concert Committee

The Encore Small Concert Committee is a committee that sponsors just small concerts. Their goal is to bring a variety of music for the enjoyment of the student body.

By keeping the concerts small, they may provide a variety of musical offerings at a low price to the student, in surroundings that eliminate mass audience pressures.

Choralaires

The Choralaires (concert choir), the University Chorus and the Women's Chorus are open to all students in the University, subject to audition.

The choruses combine to present some concerts, notably the one during the Christmas season, and each appears frequently, in its own right, during the year.

The Choralaires give several out-of-town concerts annually. In the summer of 1971, they toured Europe and are planning another European tour for the summer of 1973.

Interested students should contact Prof. R. B. Walls, Benton Hall 304D.
Student Fee Allocation: \$2,500

Madrigal Singers

The singers devote themselves to making every effort to capture the mood, style and music of the 14th through 16th centuries. Music is sung in four, five and six parts, not only in English but German, French and Italian as well. Three local concerts are sung a year plus numerous engagements for banquets and other informal gatherings.

Student Fee Allocation: \$500

Chamber Music a la Carte

This is an exclusive group at Oregon State University among the major universities. It is the highly popular series of regular Thursday noon informal concerts now in its third year in the Memorial Union Lounge.

Intended primarily for the student who would not normally be inclined to attend serious music programs, the series is supported jointly by the OSU Music Department, the Memorial Union Program Council and the OSU Foundation. Events this year have included a Bamboo Flute player from Bombay, a Renaissance music group, several harpsichord concerts and a Bach Festival.

Student Fee Allocation: \$1,000

OSU Bands

The Oregon State University bands consist of several performing organizations and numerous smaller ensembles in which some 200 students participate. All undergraduate and graduate students enrolled in the university are eligible for membership and may receive credit in the humanities towards graduation.

The **Marching Band**, one hundred fifty strong, has received many favorable comments from throughout the country for its performances on national television.

The **Symphonic Band** of approximately eighty-five consists of the most skilled and advanced players on campus. Repertoire ranges from Sousa marches and the classics to works by such renowned composers as Schuman, Mennin, Persichetti, and Nelhybel.

The **Wind Ensemble** is composed of the top chair players in the Symphonic Band and performs the most serious and challenging literature for appropriate occasions.

The **Varsity Band** is open to all students on campus with no audition required. It also serves as a training unit for the Symphonic Band.

The **Pep Band** is open to male members of the Symphonic and Varsity bands. Its purpose is to furnish music and entertainment for rallies and basketball games.

The **Stage Band** is open to all students on campus who qualify.

Student Fee Allocation: \$2,500

RECREATIONAL PROGRAMS

Physical Recreation Building

The design of the new Physical Recreation Building was determined by a University-wide student-faculty task force, appointed by the President of OSU, during the 1971-72 school year. The Recreation Task Force, after an extensive survey of student recreational needs and existing University facilities, outlined the specific recreational need areas, the new building would accommodate.

The construction of the Physical Recreation Building is to be financed from the Student Building Fee Fund. The departments of the Memorial Union and Educational Activities will administer the facility. Operational and program costs are to be provided through Student Fees. The University Board of Physical Recreation will develop the necessary policies and guidelines for the use of the new facility.

The Physical Recreation Building has been designed so that it can be made available for student leisure use for extended periods of time at minimal financial cost. Student casual use, intramural activities and recreational sports clubs are to receive top priority for use of the building's facilities. However, it is anticipated that at appropriate times physical education classes and faculty-staff use of the facilities will also be accommodated, since some of the staffing and program support for intramurals is provided by that department.

The new Physical Recreation Building will be located facing west onto 26th Street south of the Men's Gym. Construction is scheduled to begin at the end of Spring Term, 1973, with an anticipated completion date during Fall Term 1974.

A variety of co-education, men's and women's recreational opportunities, will be provided in the new building. This recreation center has been designed so that most of the recreation areas within the building are visible from the main entry floor level. Also, a central building communications-control area will be on the entry level for quick building use and recreation activity information.

The recreation facilities to be included in the building are: a large gym area containing basketball, volleyball, badminton and archery facilities; handball and squash courts; slimnastic, combative sports and weight training rooms; plus an activities room for table tennis and fencing. Also, included are men's and women's sauna, with appropriate shower facilities.

Board of Physical Recreation

Physical recreation programs and facilities at Oregon State University are coordinated by the Board of Physical Recreation. The Board of Physical Recreation is the University-wide committee which is responsible for:

1. The Student Fee funding of physical recreation programs and facilities.
2. Program budget-formulating in conjunction with established Incidental Fee budgeting procedures.
3. Review of existing facilities, both buildings and playing fields, for modification and improvements on use.
4. Review of existing programs and activities which includes the inter-collegiate athletic program for women.
5. Long-range planning for physical recreation programs facilities and appropriate funding.
6. Submit an annual report to the

President of the University, Student Senate and Administrative units concerned with providing physical recreation services, i.e. Dean of Students, Director of Health and Physical Education, and Director of Intercollegiate Athletics.

The Board of Physical Recreation is composed of six students and four faculty members. The student members are appointed by the President of ASOSU, with the consent of the Senate.

The faculty members are composed of one each designated by the Dean of Students, Director of the Division of Health & Physical Education, Director of Intercollegiate Athletics and one appointed by the University President to represent the University faculty and staff.

The funding of Physical Recreation Programs is basically through Student Fees. The established University Incidental Fee funding procedures are used to determine the level of support each activity receives. For further information contact the Student Activities Center, 754-2101.

Recreational Sports Program

The Recreational Sports Program is comprised of 23 student clubs that compete on an intercollegiate "club sport" level. This student-initiated sports program has as its primary emphasis on participation, rather than winning.

Adviser-coaches are selected by the club members and serve without salary, the exception being the women's clubs, which also function, at times, as the Women's Intercollegiate Athletic Program.

The Recreational Sports Committee governs the program. The committee is a University-wide student-faculty

committee. Its membership is comprised of six students and five faculty. Most of the program's teams compete in league competition in the Northwest.

At present the program includes the following women's, men's, and coeducational sports:

Women's Rowing
Women's Bowling
Women's Field Hockey
Men's Bowling
Women's Track & Field
Coed Rifle
Men's Rugby
Coed Ski
Men's Soccer
Coed Pistol
Women's Tennis
Women's Basketball
Women's Volleyball
Women's Gymnastics
Women's Softball
Coed Judo
Men's Volleyball
Coed Rodeo
Coed Fencing
Women's Swim
Men's Lightweight Crew
Men's Waterpolo
Coed Table Tennis
Student Fee Allocation: \$32,000

Intramural Activities

The Office of Intramural-Extramural Sports and Recreational Activity, Division of Physical Education, provides the undergraduate with a variety of organized and spontaneous physical recreation. The student may select from over thirty individual (badminton, tennis, judo, handball, archery, etc.) or team (flag football, basketball, volleyball, softball, water polo, soccer, swimming, etc.) sports supervised by the men's women's intramural departments. Co-recreational volleyball, softball,

swimming, badminton, and tennis stress the objectives of social contact and worthy use of leisure time.

Intramural handbooks and supplementary information relative to men's and women's intramurals, co-recreational activity, extramural sports for women and unstructured recreation may be obtained from 125 Men's Gymnasium, 754-1083 or 120 Women's Building, 754-3015.

Student Fee Allocation: \$20,500

Physical Recreation Facilities

The Memorial Union, Division of Health & Physical Education and Intercollegiate Athletic Department administer the following facilities that are available at appropriate times, for student physical recreational activities.

Memorial Union

+Outdoor Program Quonset Hut
+McAlexander Fieldhouse
+University Handball Courts
(for scheduling information contact the Student Activities Center, 754-2101)

Division of Health & Physical Education

+Men's Gym
+Women's Gym
+Intramural Track
+Intramural Playing Fields
+University Tennis Courts
+Golf Practice Areas
(for scheduling information contact the Department of Intramural Sports, Men's Gym, Room 125)

Intercollegiate Athletic Department

Parker Stadium Astro Turf
Athletic Practice Fields
McAlexander Fieldhouse indoor baseball practice area
(for scheduling information contact Athletic Business Office, 754-2611)
+Facilities Available, at appropriate times, for student open play or use.
Student Fee Allocation: \$20,000

McAlexander Fieldhouse

The fieldhouse (former Armory) is located adjacent to the Administrative Services Building. The old Armory was converted into a recreation center by the combined efforts of Incidental Fee monies and matching Athletic Department funds. Inclusive in the fieldhouse are: four basketball courts and-or tennis courts, volleyball courts, badminton courts, and weight machine station. There are no facilities for showers or dressing rooms. Students should bring everything they need, including equipment. However, some equipment is available and can be checked out by showing a student I.D. card.

It is open seven days a week from 8:00 am-12:00 midnight. Student use is determined on a first come, first serve basis; there are no reservations or holding courts. During peak times, students are limited to one hour playing time.

Administrative responsibility and facility management of the fieldhouse has been assigned to the Memorial Union Student Activities. Policies for student use of the facility have been and are currently being developed by the Recreational Sports Committee is a University Student-Faculty committee (five students and five faculty).

Further information can be provided by phoning 754-2626 or 754-2101.

Student Fee Allocation: \$12,800.

University Handball Courts

Two handball courts are available for student use. They are located underneath the southwest side of Parker Stadium. Any student or faculty member can use the facility by placing their name on the sign-up sheets available at the handball courts. There is a dressing area

available. However, any equipment needed must be furnished by the participants.

The facility is administered by the Memorial Union Student Activities. Policies for student use of the facility Recreational Sports Committee. Both courts are open seven days a week from 8:00 am-12:00 midnight.

Call the Student Activities Center (754-2101) for any detailed information.

Outdoor Program

Three years ago the concept of an Outdoor Program was introduced in the form of an Experimental College course. The following year it was implemented into the Memorial Union Program Council. Presently, the structure is arranged so the Memorial Union Student Activities has administrative responsibility and the Program Council is concerned with the program of events.

The primary aid is to get everyone with an interest in the outdoors and ecology involved. Participation in any outdoor program activity is not limited to students, faculty, or staff of the University. Friends and residents of the community are encouraged to attend outdoor outings. Participants may use the program at their leisure, according to their own skill level, at the times they choose, and learn outdoor skills at their own rate. Briefly, the Outdoor Program through recreation and education, seeks to help educate all on the critical necessity of conservation and preservation of our natural resources.

The program is housed in the quonset hut behind the Men's gym and the Old Forestry Building. The basic purpose of this facility is to provide a central location where educational and recreational activities related to the outdoors may transpire. This is accomplished in five separate, but

overlapping ways.

1. Trip Coordination
2. Equipment Repair Shop
3. Equipment Rental
4. Lounge, Library, Maps & Catalogues
5. Educational Service

Student Fee Allocation: \$8,520

Intercollegiate Athletics for Women

There are eleven active sports offered the women students on the campus of Oregon State University. Participants in each of these sports are involved on an intercollegiate level with teams from Oregon, Washington, Idaho, Montana and Canada. Each team is coached by a member of the Physical Education faculty and participants train during the term or season that coincides with the Northwest policies.

The Physical Education Department supplies facilities and some equipment for the programs, and the coaching time is provided by the women's physical education faculty. They receive one service class released time during the term of competition. The ASOSU budget allocation for this released time is \$12,646.00.

The future directions that may be implemented may follow one of the following patterns:

1. Establish a separate department for control of funds, facilities, equipment and procedures under the direction of the Physical Education Department.
2. Additional financial support under the existent structure.
3. Establish a Department of Varsity Athletics for women with within the men's department..

Student Fee Allocation: \$9,600

MEMORIAL UNION

Memorial Union

The Memorial Union provides a facility and programs for use and enjoyment by all students and other members of the University community.

The Memorial Union Program Council is responsible for much of the University activities programming. Fifteen activities committees chairmen comprise the Program Council. Committees are Dance, Entertainment, Fine Arts, Forums, Games and Recreation, Hospitality, Movies, Outdoor Program, Performing Arts, Programming, Publications, Publicity, Public Relations, Special Events, and University events.

Ideas for MU programs are developed and implemented by students through the Program Council. The Council encourages student participation on committees and input from students regarding programs. The Board of Directors is the top governing body of the Union. Elected positions in the Union include

a President, Vice president and Treasurer.

Student Fee Allocation: \$348,630.

Program Council: \$22,700.

MU Services and Facilities

Main Business Office—information, meeting room reservations, equipment rental, classified ad board, student activities financial accounts, and lost and found.

Student Activities Center—activity advising, duplicating service, MU Program Council offices, ASOSU offices, living group mail boxes and information.

Food Service—Commons, "O" Club, Oregon State Room, banquet facilities, tea rooms, and catering service.

Recreation—billiards, bowling, ping pong, bicycle rental, and television viewing room.

Other Offices and Facilities—craft shop, outdoor program office, lounge, meeting rooms, art exhibits, public telephones, travel boards, bookstore (Post Office, check cashing facility), barber shop, music lounge, quiet study lounge, music practice rooms.



