

Win
tonight

punch with the loss of All
frican Mel Counts, 7-0 cen-
on last year's team. Also
is Frank Peters, a high
ing guard who signed a
baseball contract last year.
ach Valenti is making no
ses though, and is looking
ard to a very exciting
on.

SIDE
ST THEATRE
One Showing
to Length

PERFORMANCES!
PRICES!
ENJOYMENT EVER
TH LAUGHTER!



ER.
A
D,
7
WINGS AT ADVANCED PRICES
Others \$1.25

OREGON STATE Daily Barometer STATE

VOL. LXX, NO. 38

OREGON STATE UNIVERSITY, CORVALLIS, OREGON

Wednesday, December 2, 1964

Easter Island Narrative Due Showing in Home Ec



"Easter Island" Narrator

Geza de Rosner, shown above will narrate the film "Easter Island - Navel of the World" tonight in the Home Ec Auditorium. Rosner is a professional film producer. The film to be shown is an adventure story about isolated Easter Island. The island is 2200 miles from the nearest mainland and 1600 from the closest inhabited island.

The color film "Easter Island - Navel of the World" will be shown tonight in the Home Economics auditorium at 8 p.m. Geza de Rosner, professional film producer, will narrate the film in person. "Easter Island" is a true-life adventure story that is also educational. Easter Island is twenty-two hundred miles from the nearest mainland, and six hundred miles from Pit-

cairn Island, the closest inhabited place. Easter Island, affectionately called Rapa Nui - navel of the world - by its inhabitants, is peaceful within itself, although it has caused worldwide disagreements over the origins of its people.

Came From Asia

Some experts believe they came from Asia, and that Easter was the last island of the Polynesian archipelago to be inhabited. Still others claim that South America, the "long-ears of Peru," arrived a thousand years before them.

Doherty, Davidson To Attend Confab

Two OSU students, Bill Davidson, OSU - IFC President, and Dave Doherty, western regional IFC president, will be in Cincinnati, Ohio, tomorrow through Saturday, for the 56th National Interfraternity Conference. The theme of the conference is "Strengthening the college fraternity system."

Over 1,000 delegates are expected to attend, representing 60 member fraternity groups with a total of approximately 3,600 chapters.

Governor Mark O. Hatfield of Oregon will be the keynote speaker at the principal banquet on Dec. 5. Governor Hatfield is a member of the Beta Theta Pi fraternity.

AP NEWS DIGEST

PASADENA, CALIF.: A Soviet spacecraft speeds toward Mars keeping company with America's Mariner 4. The Soviet craft was launched two days later than Mariner 4 and is not working properly.

UNITED NATIONS, N.Y.: The U.N. General Assembly opened on a harmonious note yesterday as the four big powers averted a U.S.-Soviet confrontation on U.N. peace-keeping assessments.

LEOPOLDVILLE: The airport was closed by rebel fire and most of the city is reported to be in rebel hands. White mercenaries have rescued from 155 to 160 rebel hostages from a cotton-growing region 260 miles north of Stanleyville. A fourth American missionary was reported slain by rebels.

WASHINGTON: A parole effective Dec. 11 was granted yesterday to David D. Beck, former head of the teamsters union. Beck was sentenced to five years in 1959 and started his sentence after an appeal failed, in June 1962.

VATICAN CITY: The Pope left before dawn today for the International Eucharistic Congress in Bombay. The four day absence will be the longest absence from Italy of any Pope since Pope VII returned in 1814 after five years in France as a prisoner of Napoleon.

STUTTGART, GERMANY: Don Schollander of Lake Oswego, Ore., winner of four gold medals in swimming for the United States at the Tokyo Olympic games was voted today the world's best athlete of 1964 in a poll of 28 sportswriters from five continents.

P-P Christmas Party Slated Friday Night

A Christmas party sponsored by People - to - People will be held Friday at 8 p.m., in the MU tearoom. Fun and a high amount of Christmas spirit are the promised ingredients of the party, according to Ann Logan, publicity chairman for People-to-People.

Folk dancing, singing, a pinata, and food are all part of the night's plans, with a candle-lighting ceremony highlighting the evening's close. Those attending the party from a foreign country are asked to bring Christmas tree decorations characteristic of their country.

High School Program Set

Opportunity OSU is having its last all - program meeting tomorrow in Dearborn 301 from 7 to 8:30 p.m. Final preparation for the functions with the high school seniors during Christmas vacation will be the purpose of this meeting held for high school chairmen and their committees.

More than 160 high schools in the state of Oregon will have Opportunity OSU high school chairmen and their committee meeting with seniors.

The high school chairmen have tried to get students representing different schools, living groups, and activities to work on their committee, according to Jerry Mason, General Chairman of Opportunity OSU.

Material packets with complete information on schools, academics, living groups, and activities will be handed out by Margie Blair, materials chairman.

Role playing of possible situations that could arise while talking with seniors will also be presented. "This will help the high school chairmen inject themselves into some of the tight encounters they might find themselves in," said Mason.

During the last part of the meeting groups will be formed according to the size high school the chairmen and committee will return to. The possible problems caused by differences in size will be discussed and solutions suggested.

"We have sent newspaper articles to respective newspapers of the high school chairmen about Opportunity OSU and what the high school chairmen and committee will be doing at Christmas time," Mason said.

"It is hoped that OSU students and alumni will find out who the Opportunity OSU high school chairmen is from their high school and offer any assistance they can," concluded Mason.

Santas, Mrs. Santas, Frosty and Mailmen

MU Christmas Party 'Personnel' are Named

Santas, Mrs. Santas, Frosty and the mailmen have been selected for the OSU annual MU Christmas Party. The party, presented for the children of OSU students, faculty, and staff will be held this Sunday from 3-5 p.m.

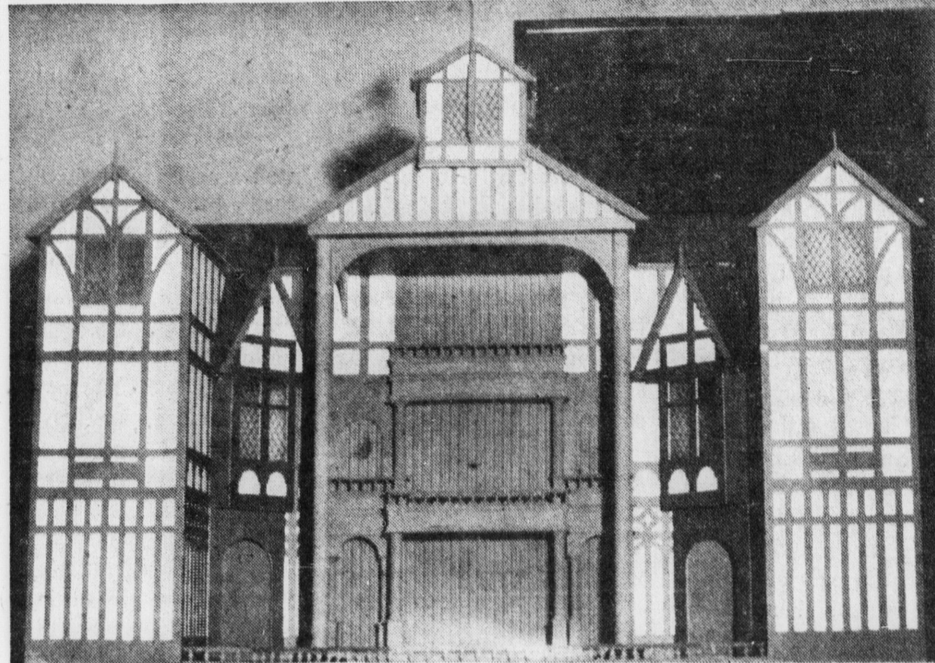
Tim Osmer, Doc Wood and Bruce Harmon have been chosen Santas for this event. Mrs. Santas will be portrayed by Ann Patton, Lacy Walker and Kathy Wick.

Ken Marler will be playing Frosty, Bill Beith, Craig Thorsen, Jay Yost, Dennis Ely, Jack Saunders and George Culbertson will act as the mailmen. Theme for this year's party will be "Christmas Fantasy."

Prof Develops Wood Stressing Technique

John Peterson, assistant professor of mechanical engineering at Oregon State University, will present a paper at the 1964 winter meeting of the American Society of Agricultural Engineers, Dec. 8 to 11, in New Orleans, La.

Peterson's paper will report on a technique for prestressing wood beams which he developed at the OSU Forest Products Laboratory in cooperation with the University of Wisconsin.



Shakespearean Theater

One of the conjecturabilities concerned with Shakespeare is what his theater, The Globe, looked like during the period 400 years ago when he was writing and acting in his plays. This model is a replica of the Ashland theater which Dr. Angus Bowmer founded as the center of the summer Shakespearean festival. In line with the "Hamlet" production this evening at 4:00 in the Home Ec auditorium there will be a movie, "Julius Caesar." The play, "Hamlet" will be presented tonight at 8:15 p.m. in the Playhouse.

'Absolute Morality' is Stressed By Moral Re-Armament Lecturer

By ALICE PITNEY
Feature Editor

"The most beastly characteristic of our time is our refusal to become involved with our neighbor. Complacency kills the conscience of a nation."

Stressing the importance of absolute morality, Peter Howard, noted British author, playwright, sportsman and international personality, addressed approximately 400 persons in the Home Economics auditorium Monday night on "Moral Re-Armament."

The tall, diversified English-

man stated that Americans go out with idealism but not with an ideology. The way a nation lives affects the way a nation goes, he emphasized.

The basic weakness of democracy, the Oxford graduate went on, is that it fights economically, politically and militarily, but without a firm ideology. Democracy is only as strong as the people who speak in her name.

The entire world knows exactly what China wants. When other nations are asked what America wants, the reply is:

To be left in peace. America takes no definite stand, no absolute position on moral problems, Howard said.

In discussing the Cold War, the political columnist outlined three solutions:

1. War would be the mad solution.

2. To surrender to godless totalitarianism would be wrong.

3. The only logical answer is world rebirth, a battle to win, to teach them how to live, what to do and what to say.

"The war today is not between the East and the West, North and South, or black and white, but between those who say God made man and man can change man, and those who say God made man and man can change God."

Howard told that he emerged from Oxford as an atheist and believed that there could be no such thing as absolute moral standards. But, he concluded, there is no such thing as a standard if it is not absolute.

To change, modern man needs a new morality of purity, honesty, needs to live straight before and after marriage, love men enough to help them become what they want to become, and unselfishness.

Movement Idea

As head of the world Moral Re-Armament (MRA) movement, Howard emphasized that it was not a going organization, but an idea on the march. He himself, has given the copyrights of his books and plays to the program for 15 years.

The solution to Africa's rising problem of nationalism, the man who played an important part in ending bloodshed in Kenya answered, is changing men. If we leave and let them take care of themselves, the black continent will soon become red, he said.

Statistics cited showed that the average South African income was 30 cents per day (14 cents in some places), that there was only one doctor for every 17,000 people, 25 per cent of all births are live and that one in seven Africans can read and write.

"There can be no co-existence of ideas. Cabbages can't exist with hungry rabbits. Ideas must be combatted with ideas," Howard emphatically pointed out.

Answering a question on evolution, Howard fired back: "evolving on things that matter."

Colleges concentrate on the educational process and building of the body, but not in teaching values. Man today is an industrial and technological giant, but remains a moral and spiritual dwarf.

Howard sincerely stated that he is not a Pacifist because he believes that the human soul is more important than the human body, and that there are things worse than death.

"The world waits for someone to show it how to live," the Englishman stressed.

Humanity is betting on America. The free nations owe their freedom to America and the future of the world depends on which way America goes.

Mansions of England On Display In Concourse

"Mansions of England in the Olden Times," a set of Joseph Nash's greatest lithographic prints, are on display in the main concourse of the MU as a part of the "Salute to Shakespeare Week" emphasis.

This set of 104 prints was produced in four volumes by Joseph Nash between 1839 and 1849 by the chromo-lithograph process which was the last of the many hand methods developed in the evolution of book illustration and print making. Lithography did not stay in vogue for long, as it was soon affected by commercial lithographic methods and superseded by the cheaper photographic illustrations.

Nash, who earned his fame for his picturesque views of late Gothic buildings, is also a water-color painter and oc-

asionally took his subjects from Shakespeare.

His lithographs are executed in the tinted style and exhibit free use of body color. His views of buildings are aimed chiefly at the picturesque effect, with little attention given to structural detail.

Lithography is produced by drawing with a greasy crayon, made of soap, wax, oil and lampblack, on the prepared surface of a limestone block. This is then etched with acid, soaked water to dampen the surface not covered with crayon, and applied with a roller and printed on paper by rolling the stone and the paper through a press.

Without infinite care, the result will be a mess, as was often the case with lithography.

Changes in China Subject of Convo By Felix Greene

Felix Greene, a seasoned observer of the international scene, will speak on "What's New in China?" at the all-school convocation in the Coliseum at 10:30 this morning.

Greene has made three trips to the Chinese mainland since the Communist take over. On these trips he has interviewed Chinese Prime Minister Chou En-lai as well as other prominent ministers of state and government department heads.

He has also talked with senior civil servants, commune leaders, artists, doctors, businessmen and students. Greene has succeeded in bringing back an off-the-record account of a complete cross-section of China at this period in its history.

Greene made his latest trip in the late part of 1963 spending three and one-half months and covering 15,000 miles on the Chinese mainland.

News Commentator

Greene is British-born but now resides in California where he directs an importing company and frequently broadcasts news commentaries on the West Coast. He became interested in China in 1957 when a business trip took him to Hong Kong.

He thought since he was that close he would try to visit the mainland of China too. He traveled many thousands of miles inside the country, visiting not only the larger cities but also the smaller towns and villages where he was able to get a glimpse of rural life in China.

Greene has made extensive studies of all phases of Communist life since his interest was aroused in China. He has visited Communes in scattered areas, inspected hospitals, schools, colleges, prisons, and courts of law.

Works With Peasants

He has spoken with writers and editors and seen the poorest of slums and the best of new housing. He has also worked with the peasants in the fields and eaten with them in the dining halls.

Legislative Action Discussion Subject

What really goes on in the legislature will be the topic of discussion at the Republican Club steak banquet to be held Friday, Walter Leth, senate minority leader representing Benton and Polk Counties, will be special guest.

Ken Hagarty, Republican Club chairman, reports that Leth is a very dynamic and humorous speaker who will prove very informative on questions concerning our state legislature.

The banquet will begin at 6:15 p.m. in the MU Terrace Room.

Tickets and membership cards for the club will be sold at the door beginning at 6 p.m. A door prize is also planned. For reservations, members and non-members should contact P. J. DeWolf at PL3-4797.

B&T Magazine Production Due

The School of Business and Technology at OSU will soon be sending out the Winter issue of Northwest Business Management. This quarterly publication, which started its second year this fall, is published by the Oregon State University Press and is directed toward managers of small and medium-sized businesses.

Dr. Richard J. Hopeman, editor of NBM and Dr. Jack L. Rettig, past editor of NBM were instrumental in its development.

Many members of the staff in the School of B&T have contributed articles. They include professors Harry T. Allan, J. Allison Barnhill, Jack Bluestein, Donald D. Bourque, Homer M. Dalbey, Edison E. Easton, Louis L. Edwards, Richard J. Hopeman, Joe K. Kerby, Lloyd Q. Larse, Richard Mengler, Vergil Miller, Joseph J. O'Rourke, John A. Pfanner, Herbert Qualls, Jack L. Rettig, Helmut G. Shreima, Per Sjogren, Thompson Snyder, Lester B. Strickler, B. Hugh Wilkins, and Fred E. Unger.

Over 850 copies are sent to subscribers, 50 per cent being distributed in Oregon, 45 per cent in Washington, and 5 per cent outside the Northwest. Dr. Hopeman pointed out that NBM is financially self-supporting from subscriptions and contributions of a few firms in Oregon. No state funds are involved.

Topic areas of the 36 page Fall issue include the federal tax cut, the new uniform commercial code, a study of Oregon business failures, some characteristics of new small manufacturers with inadequate financial resources, fire insurance, and business communications.

Artist James Leedy Sets Art Lecture

Celebrated artist, James A. Leedy, is scheduled to speak on "The Artists' Creative Search" at 8 p.m. tomorrow in MU 105.

Leedy, whose work was on exhibit in Fairbanks Hall earlier this term, will be bringing the final Liberal Arts lecture for fall term.

Achieved Artist

An assistant professor at Ohio University, Leedy is himself an among awards for his work are the Art Achievement Award given by the Richmond Professional Institute of the College of William and Mary, the Purchase Award sponsored by the Miller and Rhoads Foundation of Richmond, Va., the Certificate of Distinction, the Traveling Exhibition Award, and the Virginia Museum of Fine Arts honorarium to design their 1959 Christmas card.

Exhibits Work

The Ohio University artist has exhibited his work across the country winning numerous awards. He has exhibited four times in New York City recently including the Art Directions Gallery Quarterly Show and the New York Exhibition of twelve paintings, both in 1963; at the Panoras Gallery in 1964; and for the Audobon Artists 18th Annual Exhibition there.

West Coast exhibits recently in addition to his OSU exhibit.



James A. Leedy

it have been at the Century 21 Gallery in Seattle; at the Henry Gallery at the University of Washington, Seattle; at the Hanga Gallery, also in Seattle; and for the Northwest Print Show in both 1962 and 1963 where he won both honorable mention and purchase awards.

Leedy's appearance at Oregon State is sponsored by the Liberal Arts Programs Committee, an organization endeavoring to bring noted authorities in their fields to the campus. Tomorrow night's lecture will be the last of three lectures this term.

... And a Teddy Bear, and ...

Children of students, faculty and staff members who attended last year's MU Christmas Party are shown here. This year's party will be this Sunday from 3 to 5 p.m. in the MU. The theme is "Christmas Fantasy." Children will be able to talk with Santa Claus, Mrs. Santa and Frosty the Snowman during the afternoon. The party is an annual event.

OREGON STATE Daily Barometer

RICH HANSEN
Editor

MIKE KOCH
Business Manager

"Salute to Shakespeare"

He was just one man, a solitary individual. But he wrote 38 full-length plays and composed 154 sonnets, plus several long poems, in only 25 years. No one man has preserved, introduced or cemented so many words into the everyday English language, or is as widely quoted as this literary genius. Nobody has such power over our laughter and our tears as this single poet, player and playwright. Though it was over a century before his worth was recognized, this dramatist remains the world's foremost playwright today. It is fitting, therefore, in the 400th year since his birth, that we set aside one week in which to honor this outstanding individual — William Shakespeare.

"Salute to Shakespeare Week," centered around the OSU production of the tragedy "Hamlet," will focus on readings, music and drama from the Elizabethan period. Each day during this emphasis week, to continue through Dec. 5, a special Shakespearean program is being offered. Besides daily coffee hours from 3-5 p.m. in the MU Lounge, featuring typical Elizabethan

music and readings from Shakespeare, the movie "Julius Caesar" will be shown during the week. The concluding event will be a reception in the lounge after the Friday night "Hamlet" performance in honor of the cast and Dr. Angus L. Bowmer, nationally renowned Shakespeare authority and director of the OSU production.

Sponsored by the Women's Residence Hall Council, the "Salute to Shakespeare Week" pays tribute to the talent of a man who, though he wrote 400 years ago, held a modern point of view, and whose works are timeless. He found the drama of his time crude and chaotic — he left it orderly and long-lasting. Many authorities have disputed the authenticity of Shakespeare, pointing out the improbability that such abnormal literary genius could be possessed by an actor who had left school at the age of 14. But whether it is Francis Bacon, as many writers claim, or the Stratford-on-Avon genius who revived English drama, we salute and honor him during this week, for he left us a tremendous literary heritage.

-a.a.p.-

"Perchance to Dream"

"To sleep: perchance to dream: ay, there's the rub!" Hamlet, Shakespeare's tragic, young student-prince rejected suicide in this fashion. And yet, the possibility of a worse life after death deters few suicidal students today. According to a report published in the November issue of the National Educational Association Journal, the number of student suicides in the United States has risen alarmingly in the past few years. "Depressed boys and girls, victims of inner turmoil and increasingly difficult outside conditions, are taking this way out of their troubles," Marguerite Clark of Cornell University Medical College declared in the Journal. In 1962, about 550 young people between 15 and 19 years old took their own lives.

When asked the number of suicide attempts made at Oregon State last year, Dr. Charles Kremer, Director of the Student Health Service, declared that "one would be too many." He continued saying that the actual number of suicide attempts are unknown. Most occur off campus, on vacation or at home. He stated that wives and husbands are the principle offenders as they often become depressed and seek an escape.

In a study made by Cornell University, Dr. Leif Braaten, former psychologist, listed four motives for student suicides:

1. A desire to destroy themselves because they can no longer tolerate the discrepancy between how they appear to themselves and how they would like to be.

EDITORIAL BOARD

Rich Hansen, Mike Koch, Betty Ingram, Dale Westerberg, Bob Moore, Linda Hilley, Alice Pitney, John Solzer, Pete Woltz, Jim Sample, Mary Poucher, Vic Cordell, Nancy Austin, Pete Wold and Dave Doherty.

FENCING

Advisors???

To the Editor:
In reply to Raymond Velez, your letter in the "Fencing" column of Tuesday, November 24th please allow me to point out that you are greatly uninformed and guilty of accusations and generalizations which are unfounded.

1. You do not understand the function of club advisors. The advisors function is as the name implies, they advise and help students with problems and difficulties that arise during their residence in the halls. They are not protectors or monitors.

2. You implied that some advisors participate in "beer busts" in the halls. I challenge that statement. I doubt that you have ever seen an advisor drinking in the halls let alone at a "beer bust" in the halls. I doubt if you have known

enough advisors to even suggest that some are known to participate in "beer busts" in the halls. Do you realize the damage that can be done by writing statements of indictment that are not based on fact?

3. You say that most dormitories sanction weekly "beer busts". I wonder how many halls you have been in on this campus, and how many of them really sanction weekly "beer busts". Upon that evidence do you base this statement?

4. You have tried to place the blame for some "vague and trite" violation which you term weekly "beer busts" upon the Housing Office and the advisors program. If there is any blame at all to be placed, it is chiefly with you and your fellow students. If the conditions are as you think they are, then you were unknowingly correct in what you tried to disprove and

it is even more true, for... the blame lies in the fluctuating... values of students... You and your peers are the ones who decide how you want to live and if you are dissatisfied you can change it. The power is in your hands. If the purpose of your letter was to start a controversy or stir up a reply so that you could receive a grade in freshman composition, then you have succeeded. However, if I were your instructor I would flunk you for your violation in nearly libelous statements and your unfounded generalizations.

I personally feel that you owe the Department of Housing, the various halls and the advisors an apology, and that you should do a little more research before you make generalizations when you have no facts to base them on.

Devey Miller
Hawley Hall

Bits And Pieces



By EVELYN OVESON

One disadvantage of the Rose Bowl — the facts and fantasies are hashed and re-hashed until everyone knows the story backwards and forwards. It's funny how much of it remains interesting.

That USC-Notre Dame game was enough to curl anyone's hair. Driving back to school — without a car radio — I stopped at strategically placed gas stations to check on the game's progress. In the distance of 25 miles, the score changed from 17-7 in favor of Notre Dame to 20-17 for USC. Mumbling that OSU's chances for the bid were shot — why hadn't Notre Dame even attempted a field goal after they had that touchdown called back? — how terrible to get so close and then be so far — how could the PAC judge on just one game — and that money I was saving just for the trip to Pasadena — yet, if USC could beat the Irish, maybe they deserved the bid (I had a hard time convincing myself of that!) — all sorts of things went through my mind.

Thirty miles outside of Portland, we picked up one of those freeway fanatics. Two fellows were in the car, driving beside me in the other lane, tailing me too closely, and just generally making nuisances of themselves. Even when I turned off the freeway into Portland, they stuck tight. Feeling just a little apprehensive as they pulled up behind me when I stopped, my fears were soon calmed when one guy walked up beside the car and said, "Pardon me, ma'am, but we've been following you for fifty miles to tell you that Oregon State got the bid to the Rose Bowl." And to think — he was from PSC, his buddy, from Oregon!

Another thing must have rankled Southern Cal. Their big win only dumped the Irish to third while the USC team made the number 10 notch — still two below Oregon State.

Dr. Margaret Lumpkin, adolescent psychology instructor, informed her class of a new motto: "Marry young and have a congenial college roommate."

New director of OSU Summer Session, Rob Phillips, is making improvements already. The usual class schedule has Monday, Tuesday, Thursday and Friday as class days, with Wednesday as the free day. Starting this summer, however, classes will be held the first four days of the week, and Friday will be free. It's easy to imagine the friction that some members of the administration gave. Just think — a three-day weekend! Actually, it's an excellent idea. So many summer students are from out-of-state and a three-day weekend will give them time to see the country. And the undergraduates will have that much more time to soak up some sun — or study!

A gold digger: A girl who thinks poverty is worse than sin.

FENCING

Band!!!

To the Editor:
In answer to Mr. Haenny's letter of a week ago, it appears he had many things to complain about, but his appraisal of the marching band caught my attention. Every year it seems, the marching band is given a lot of unfavorable criticism. A few things should be made clear. We in the band are in it for "fun" and because we want to represent OSU in a way we can do best. Oregon State is one of the very few major universities in the country that doesn't have a music major, and consequently no one is required to participate in marching band or work for a grade in it. Each year the band has a hard time recruiting enough members. In how many classes are you required to attend four hours a week (plus performances) without an absence or a late for one hour of credit? Even if you do get an A for meeting the above requirements, how many other grades might you lower? So you see it isn't all "fun" to be in the band. We could be working under more favorable circumstances, such as more support from the Board of Higher Education.

I can assure you the band will practice many hours over Christmas vacation for the Big Game, and we will represent Oregon State to the best of our ability in the Rose Bowl.

Larry Rader
203 N. 13th

BAROMETER STAFF
Betty Ingram — Managing Editor
Roy Mann — News Editor
Jim Sample — Asst. Managing Editor
Linda Hilley — Editorial Editor
John Salzer — Sports Editor
Alice Pitney — Features Editor
Luis Harris — Society Editor
Wayne Faligowski — Copy Editor
Jeanne Ewalt — Wire Editor
Chris Thompson — Exchange Editor
Red Commons — Photographer
Ken Weathers — Photographer

Students to Vote On MU Changes

At a special Memorial Union Corporation meeting Dec. 10, all members of the corporation (OSU students) will vote on a possible transfer of the MU properties and assets to the State Board of Higher Education.

A quorum of 500 students must attend the meeting that could make the MU a part of the total educational program of OSU. The action for the proposed change-over began with the MU Board of Governors and takes the form of a resolution as follows:

Whereas:
(1) The original purpose of the corporation as expressed in the charter has been faithfully carried out to date. A Memorial Union Building has been erected on the campus of Oregon State University providing a center for student, faculty, and alumni activities, as a lasting memorial to students and alumni who gave their lives in the Spanish American War and the World Wars.
(2) It is the opinion of the Board of Governors that there continuing the corporation as a separate entity and that the obligations and responsibilities to the original donors, contributors and members of the corporation are being completely and faithfully discharged.
(3) The Board of Governors is empowered by the Memorial Union Constitution and By-laws to authorize a conveyance of all property of the corporation to the State Board of Higher Education on such stipulations and conditions as the Board of Governors may prescribe.

It is resolved that:
(1) The Board of Governors, convene a special meeting of the members of the Oregon State University Memorial Union Corporation to provide for a transfer of all corporate prop-

erty to The State Board of Higher Education on the behalf of Oregon State University.
(2) The State Board of Higher Education on behalf of Oregon State University accept the corporate property and agree to carry out the purpose of the corporate charter to the fullest extent compatible with state law.
(3) The present Board of Governors and Board of Directors be reconstituted into a new Board of Directors to serve in an advisory capacity to the Memorial Union Director and to the President of Oregon State University in matters regarding the Memorial Union Building and Program. (Such changes to be effected in time to enable the new Board of Directors to assume office no later than July 1, 1965).
(4) The composition of said board be as follows:
Memorial Union President — Elected by Student Body
ASOSU Representative — Appointed by ASOSU President from elected members of executive cabinet
Student — 2 year term — Elected by Student Body
Student — 1 year term — Elected by Student Body
Alumnus — 3 year term — Appointed by Alumni
Alumnus — 2 year term — Association Board of Directors Faculty — 2 year term — Appointed by University President (to serve as chairman.)
Faculty — 1 year term — Appointed by Faculty Senate.
Dean of Administration — Ex-officio
Dean of Students — Ex-officio
Director — Memorial Union — Ex-officio non voting

(5) The new Board of Directors be empowered to devise a Memorial Union Constitution to conform to the aforementioned changes.

FENCING
Thanks!!!
To the Editor:
I want to take this opportunity to compliment our students at last Saturday's football game and express the appreciation of our football group.
While I feel our students have furnished fine backing all year, I was particularly impressed Saturday. Quite often when your team is behind and seemingly making no progress, many students sections be-

come derisive, blasé and "clever". However, throughout the entire game when things were looking most bleak, I felt Saturday our large student crowd was with us every minute.
While I hesitate to credit anyone other than the football players for game results, I firmly believe intangibles such as this make their contribution.

Tommy Prothro
Head Football Coach

CLEARANCE SALE
CAMPUS STORE ONLY
20% OFF
• Pacific Trail • Martin • Sir Jac
Ideal Christmas Gift
PHIL SMALL
5% Discount Bonus Plan Free Pepsi Free Parking
University Shoppe

12. Miscellaneous
COUNTRY SQUIRE new, large apartments with wall to wall carpet, drapes, appliances, plenty of closet space and completely sound proofed and insulated. Two-bedroom unfurnished \$99.50 and one-bedroom unfurnished \$75.00, also available furnished. 2130 Janssen, 753-4561 after 5:00.
ALTERATIONS — Formerly with Lipman's. Prices Reasonable. 753-4539.
WHY RENT A TV when you can buy one for \$29 at Day & Camp TV. 916 Beca.
ROOMS for rent, quiet, no smokers. 321 N. 13th.

12. Miscellaneous
TRAINING in court and convention reporting, stenotype or Gregg shorthand; Refresher and speedbuilding courses all short hand(s). Weekends, evenings, 753-5435.
BOYS: Tired of doing a woman's job? Let me do your ironing for you. 1140 North 16th. 752-4617.
NEW two-bedroom apartments, furnished or unfurnished. Electric heat. 327 N. 7th Street. Call 752-5962 after 4 or 928-8416 anytime.
DRESSMAKING and alterations. 753-6771.

EVERYONE READS
THE OREGON STATE BAROMETER

"Just think, it used to be Pablo Casals"



Africans Resent U.S. In Congo
UNITED NATIONS, N.Y. (AP) — The African group of 33 nations asked Secretary-General U Thant Tuesday to make representations to Belgium and the United States that all foreign troops and mercenaries be pulled out of the Congo.
Belgium has announced the paratroopers it sent into the Congo aboard U.S. Air Force planes to rescue white hostages have been withdrawn.

HELP change ASPECTS from a politically slanted instrument into a literary pot pourri; send creative writings to ASPECTS, P.O. Box 5125, Eugene, Oregon. (Free back issue sample by request.)

ORDER NOW!
Yes—It's time to order those personalized Christmas cards
For a good selection
CORL'S BOOK SHOP
Madison at 5th
THE DOWNTOWN BOOKSTORE

SENIORS: CHOOSING A CAREER?
Look to Oregon's Largest Employer for diversified opportunities
The State of Oregon needs young men and women with initiative who are willing to assume responsibility in a variety of fields such as: Management, Personnel, Accounting, Auditing, Research, Counseling, Public Relations, Social Service, and Education.
Campus Interviews . . . December 9
Civil Service Representative will be on campus DECEMBER 9. Call the University Placement Office for an appointment.
There's More Future With Oregon



SOPHOMO
Members
three new
committees
ed in a Cl
ation Com
Project Cl
term class
should sign

EA
IS
(Land

GEZA
A Wor
All-Colo
HOM,
Wed.,
Adults \$

Cancel

St

New

FARAH M

used to be
asals'



OREGON STATE UNIVERSITY
DAILY BAROMETER
Published by the Associated Students
Oregon State University Tuesday
through Friday. Entered as Second
Class Matter at the Post Office at
Coville, Oregon 97330. Saturday
issues will be published on the following
dates: November 7; February 15;
April 30; May 1.

HELP change ASPECTS
from a politically slanted in-
strument into a literary pot
pourri; send creative writings to
ASPECTS, P.O. Box 5125,
Eugene, Oregon. (Free back
issue sample by request.)

NOW!

to order those
Christmas cards

selection

BOOK SHOP

at 5th

BOOKSTORE

**ARE YOU
A CAREER?**

Largest Employer
Opportunities

Young men and women with
assume responsibility in a
management, Personnel, Account-
ing, Public Relations, Social

December 9

on campus DECEMBER 9.
office for an appointment.

With Oregon

D

7

12. Miscellaneous
BOXES of Apples: Red and
Golden Delicious, most all
sizes. Special prices to stu-
dents. Will hold in cold stor-
age till February. Call 753-
3077.

LOST: A watch between Ex-
tension Hall and Stadium,
day of Oregon-OSU game.
\$10.00 reward offered. Call
Dianne Conn, Ext. 227.

'426" 1964 SPORT FURY!
(Street version) 4-speed. 410
posttraction, vibrasenic. En-
gine balanced, special cam
and lifters. List \$3914 new,
assume balance \$2793. Call
752-1797 after 6.

59 CHEVY two-door, 6-cylin-
der, stick shift. Call 753-5404

METER

Beaver Memo

SOPHOMORE CLASS

Members are needed for three new sophomore class committees. All those interested in a Christmas Tree Decoration Committee, Class Service Project Committee, or winter term class dance committee should sign up.

IMMIGRATION AND NATURALIZATION SERVICE.

Roland Johnson of the Immigration and Naturalization Service will be on the campus in MU 110 tomorrow. Anyone who wishes an appointment please call the Office of the Foreign Student Counselor, ext. 1229.

SENIOR CLASS

Any senior interested in working on the Senior Steak Fry please fill out a General Activities Application at the Activity Center before Dec. 11.

OPPORTUNITY OSU

Opportunity OSU's final all-program meeting will be held tomorrow in Dearborn 301 from 7 to 8:30 p.m. Information packets, role playing of possible situations, and details on setting up Christmas functions will be featured.

OSU MOUNTAIN CLUB

J. Michael McCloskey, Northwest Conservation Representative of the Federation of Western Outdoor Clubs will speak to the OSU Mountain Club, Oregon Cascades Conservation Council, and interested public at 7:30 p.m. tomorrow in PC 149. The topic will be Recent Developments in the Northwest.

MARKETING CLUB

There will be a meeting at 7:30 p.m. in MU 217 for all those interested in marketing. Bob Inman, OSU graduate of 1963 who is now a sales representative for Mobil Oil will be our guest speaker. We will be discussing future plans and activities. Everyone is welcome.

EASTER ISLAND

(Land of AKU-AKU)



WITH

GEZA de ROSNER

A World Around Us

All-Color Travel Film

HOME EC. AUD.

Wed., Dec. 2, 8 p.m.

Adults \$1—Students 50c



Phi Delt Court

Pictured above are Oregon State freshmen who are finalists for Phi Delta Theta Playmate of the Term. The event is sponsored by the Phi Delt pledges. Seated (left to right) are Tina Floberg, Kappa Kappa Gamma; and Judy Martin, Kappa Alpha Theta; and standing (left to right) are Linda Field, Buxton; and Sharon Wilson, Kappa Kappa Gamma.

Cancel your "pressing engagements"!

FaraPress

Slacks
by



Never Need Ironing



"They're ironing while
they're drying"™

Styled-right
FaraPress.
Slacks

Never Wrinkle
Won't Wilt or Muss
Creases are Permanent
Colors are Fast
Feature Finest Fabrics
Wear Longer and
Stay New Looking

Just wash 'em,
They Press
Themselves

FARAH MANUFACTURING CO., INC. EL PASO, TEXAS

Pins and Rings

By Lois Harris, Society Editor

A telegram delivered at dinner brought word that BRENDA SCHMITZ, Kappa Alpha Theta, had received the pin of RON OLSEN, Delta Upsilon.

A pink candle with pink roses was passed at the Tri Delta house Monday night to announce the engagement of BOB DENNY, Delta Delta Delta, to TOM SEB, Sackett C.

The Pi Phi's were recently surprised when the pinning of KAREN SWARTZ, Pi Beta Phi to ROGER ARVIT, Acacia, was revealed.

A white candle decorated with pink carnations was passed at a meeting of Buxton Fourth to reveal the pinning of VICKI LEE RANKIN, Buxton, to RICHARD WILLIAM CRAVER, Theta Xi.

Announced at the Top of the Cosmo in Portland while celebrating Cheryl's birthday, was the engagement of CHERYL NELSON, formerly of Buxton, to BOB BARMUN, Beta Theta Pi.

Cigars were passed at the AGR house to announce the pinning of DAVE MORRIS, Alpha Gamma Rho, to SANDRA GIEPEL, Buxton Second.

Recently revealed at an informal dinner party was the engagement of MARY JAYNE FISK, OSU, to DAVID DONALD TURNER, Southern Oregon College.

A candle with a huge dime-store diamond was passed at the Theta house to announce the engagement of JUDY KAMPENBORG, Kappa Alpha Theta to BOB BIRDSEYE, Bellevue, Washington.

A white candle trimmed with baby red rosebuds was circulated at the A D Pi house to announce the engagement of LESLIE HUBBARD, Alpha Delta Pi, to BERT FRENCH, Ridgecrest, California.

Recently announced was the pinning of CONNIE GATSCHE, Fontana, California, to

BILL KENTTA, Alpha Gamma Rho.

Two girls singing Jingle Bells revealed the pinning of VICKI FAIRCHILD, Kappa Alpha Theta, to GREGG MACY, Sigma Alpha Epsilon.

A candle with pink daisies was passed at the DZ house to announce the pinning of ROBIN McDONALD, Delta Zeta, now at Washington State to SHANE CARTER, Washington State.

During Monday night announcements, a sorority sister announced the August engagement of SARA GUSTIN, Kappa Delta, now at the University of Washington, to BILL WHITMORE, OSU graduate.

Following dinner, a poem was read by the housemother and a white candle with red roses was passed to reveal the engagement of SANDY GUSTINE, Alpha Gamma Delta, to RICH BOWERS, OSU.

At a family dinner party during Thanksgiving Vacation, the engagement of MARTHA ANDERSON, off-campus student, to BARRY DEARBORN, off-campus student, was announced.

A candle was passed around the table to announce the pinning of LINDA LAMPMAN, Medford, to JIM SCHMIDT, Phi Kappa Sigma.

Recently announced was the summer marriage of SUE MORROW, Delta Zeta, to LADIE MALEN.

The traditional passing of cigars revealed the pinning of SAM WADE, Alpha Gamma Rho, to MARGARET GREGORY, Eastern Oregon College.

Each girl plucked a petal from a special "wishing flower," attached to a candle that was passed to announce the pinning of LINDA LEMAN, Coed Cottage, to DOUG HAY, Cascadia Lodge.

Pinned this summer were SALLY ERICKSON, Rocky Mountain College, and TERRY

ROBERTSON, Pi Kappa Alpha.

A pink candle with pink rosebuds and a cranberry-colored ribbon was passed revealing the pinning of CANDY HOLMBERG, Snell Second, to FRANK GLENN, Phi Kappa Sigma, University of Washington.

Announced recently to family and friends was the engagement of KAREN BALL, OSU, to WALTER BROWN, Parsons Hall, UO.

A silver candle trimmed with blue carnations was passed at Monday night dinner to announce the engagement of MARY ANN PROCTOR, Alpha Delta Pi, to JIM BRODIE, OSU.

A card trick at the recent Farmhouse house dance revealed the pinning of CLAUDIA WHITESIDE, Albany, to RON JONES, Farmhouse.

A housemeeting concerning etiquette revealed the pinning and engagement of MARGE ADKISSON, Chi Omega and KENT SMITH, Sigma Chi.

A blue candle with white roses was passed at the DZ house to formally announce the engagement of LINDA KING, Delta Zeta, to GUY GIBSON, OSU.

Monday night a lavender candle entwined with white roses was passed to announce the engagement of LINDA OLSEN, West Fifth, to MIKE GUINED, Salem.

After a poem was read, a white candle surrounded by pink ribbon roses and white net was passed to disclose the engagement of DONNA BAKER, Alpha Gamma Delta, to WARREN SORENSON, University of Washington.

A white flower container decorated with two kissing cupids and filled with red carnations, was passed at the Chi O house to reveal the engagement of LOLA RABERN, Chi Omega, to BILL FRASER, Delta Tau Delta, University of Washington.

Sororities Close Informal Rush After Pledging 32 OSU Coeds

The fall informal rushing period has come to a close with the pledging of 32 girls. This is a 35 per cent increase over other years. Twelve of the sixteen national sororities on the Oregon State University campus took part in the informal rush program this fall.

The pledges and their respective sororities are as follows:
Alpha Delta Pi — Susan Chenoweth, Portland.
Alpha Gamma Delta — Twila Adair, Milton-Freewater.
Alpha Omicron Pi — Kathy Cosper, Oregon City; Monika Duhl, Portland; Diane Grieve, Corvallis; Francis Griffiths, Salem; Shirley Wostenberg, Roseburg.
Alpha Phi — Alice Fossatti, Pendleton; Sandra Gannon, Medford; Janet Spoerl, Medford.
Chi Omega — Alicejean Engle, Corvallis; Jacqueline Fanno, Coos Bay.
Delta Delta Delta — Jacqueline Eubanks, Corvallis; Merrilee Winterrowd, Fair Oaks, California.
Delta Zeta — Marcia Folsom, San Luis Abispo, California; Cynthia Henderson, Portland; Tamla Mitchell, Klamath Falls.
Gamma Phi Beta — Susan Harn, The Dalles; Marilee Hansen, Portland.
Kappa Delta — Doreen Bel-

OSU BASKETBALL

on
KLOO 1340

OSU vs. WASHINGTON
(7:45 Saturday)

THE SPORTS VOICE OF
The Mid-Willamette Valley

1340 KLOO 1340

Beaver Memo

ALPHA LAMBDA DELTA

The initiation of Alpha Lambda Delta, the freshmen women's honorary will be December 6, 1964. The ceremony will be at the Zeta Tau Alpha house, 3003 Harrison, from 2:30 to 4:00 p.m. All members of Alpha Lambda Delta are invited. Refreshments will be served and pictures will be taken for the Beaver.

COLLEGE LIFE

Bud Hinkson, former UO student body president will speak tonight at College Life. The group will meet at 9 p.m. at the Alpha Chi Omega house, 310 N. 26th.



Queen of Hearts

Sharon Wilson, Kappa Kappa Gamma freshman, was chosen "Queen of Hearts" at the Sigma Phi Epsilon fall term house dance November 20. Sharon is escorted by Mike McKenzie.

Fishery Conference To Open Tomorrow

The 15th annual Northwest Fish Culture Conference will be held today and tomorrow at Oregon State University.

Some 200 scientists concerned with fish nutrition, fish pathology, and production management will attend. John Fryer, assistant professor of microbiology and fisheries, is conference chairman.

Participating groups include the OSU Agricultural Experiment Station, Oregon Game

Smorgasbord To Feature Swedish Food

Sigma Kappa sorority will hold its 25th annual Christmas Smorgasbord this Friday at the Chapter House. The Smorgasbord is held in honor of Oregon State University faculty members and wives or husbands.

The girls have invited from one to three professors each. The deans of the schools, the university president, the deans of students, men and women, and others on the administrative staff have also received invitations. Approximately 350 persons, including the members, are expected to attend the dinner.

The menu is Swedish and includes such dishes as baked salmon, baked ham, red candied apple rings, pickled peaches, pickled beets, baked beans, and Swedish meat balls. Ice cream sundaes with blue-berry sauce and spitz cookies will be dessert. All the food is being prepared by the girls under the direction of Patti Warrington, foods chairman.

Activities Available
All students interested in playing bridge or chess tournament games on Jan. 10, 23, and 30, must sign up by Dec. 10 to compete. Winners will represent OSU at the ACU Tournament at the University of Washington on Feb. 18-20. Sign up list is posted in the MU Activity Center.

WHAT'S NEW IN THE DECEMBER ATLANTIC?

"Why Europe Fears Us" by Raymond Aron: Misunderstandings regarding the use of nuclear weapons have led Western Europe and Russia to fear the United States and to doubt its sincerity.

"Are Movies Going to Pieces?" by Pauline Kael: A lively criticism of the New American Cinema where there is no plot, no sensible meaning, and no recognizable form.

"The New Sportsman" by C. Michael Curtis: How sportswriters now use the scholarly approach with a touch of Freud and emphasize the motivation of players instead of straight reporting.

PLUS AN ATLANTIC EXTRA: Edwin O'Connor: "One Spring Morning": An 11,000 word preview of the author's new novel on which he is now at work.

The pursuit of excellence is the everyday job of The Atlantic's editors but in fiction or fact, poetry or prose, in ever-increasing numbers, those in pursuit of academic excellence find The Atlantic a challenging, entertaining and enlightening companion. Get your copy today.

ON SALE NOW

Nancy's News 'n Notes

Hi...

With final week sneaking up on you... and the excitement of the Holidays ahead... why not take an afternoon off, and head for Albany to browse and shop in the relaxed atmosphere of NANCY'S.

It's fun, whether you're looking for something for yourself, or doing some early Christmas shopping.



If it's for yourself, all the pretty Holiday pastels are in at NANCY'S... with a great group of coordinates by Sporttempo, Bobby Brooks, Tami, Sweda Knits and many others. Casual, dressy, or for relaxing... you'll find dozens and dozens of go-together fashions from which to choose.

Have you tried Sweda Cotton Knits with the great fit? In happy yellow, pink or blue... matching capri's, skirts and several top styles with tempting trims.

those fantastic CATALINA knits are in... featuring wonderful new colors in basic sweaters, skirts, capri's, sweaters, shell tops and jackets. A real fashion news item, CATALINA's LACE SHELL AND SWEATER at NANCY'S.

And you'll find Party fashions galore at NANCY'S. Long and short formal... cocktail dresses, dressy wools... hostess skirts, velveteen capri's and separates.



You can solve your Christmas shopping problems at NANCY'S too. Many gift ideas... pretty lingerie... gay PJs and gowns... dozens of blouses by MacShore, Ellen Tracy, Lady Manhattan and others in white, colors, and prints!

Capri's in wools and cotton... colorful pant blouses... sweaters... ROBES galore... skirts in many styles, colors and weaves... and so many, many more items at NANCY'S.

Little money gifts, too... scarfs by Vera, the Puff, gloves, hose, gay knee and over-the-knee Sox to mention just a few ideas you'll find at NANCY'S.



Free gift wrapping and wrap for mailing, too.

Drop in soon, to NANCY'S... turn right as you come off the Bridge in Albany, and go one block.

LYNN
NANCY'S
301 West 1st Albany

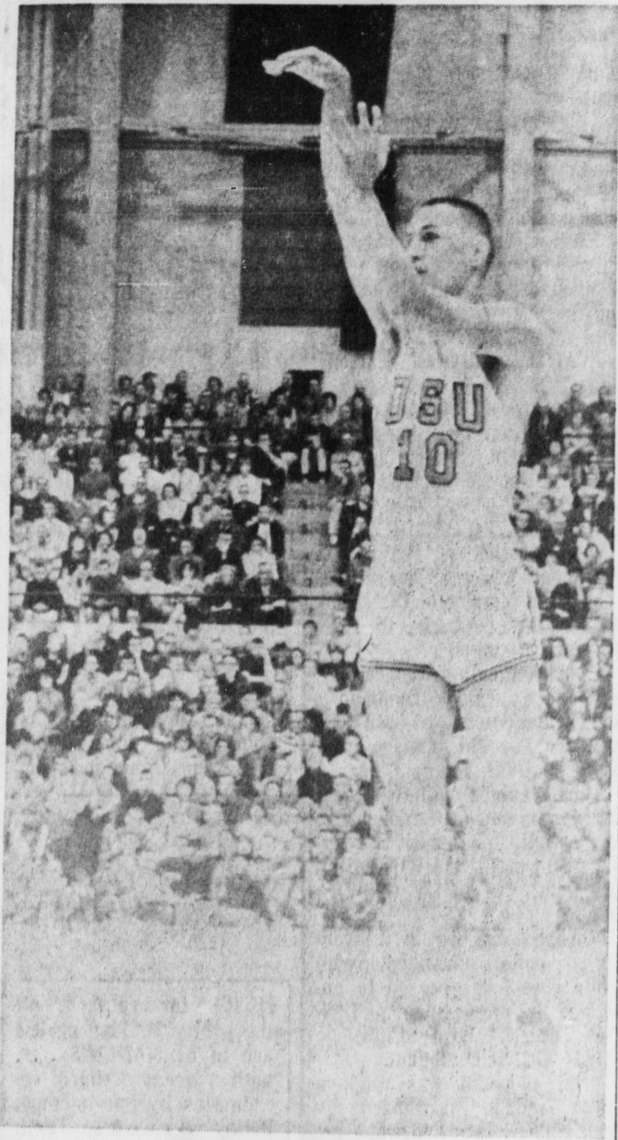
BOOKS SAY MERRY CHRISTMAS BEST

BOOKS SAY MERRY CHRISTMAS BEST

OSU BOOK STORES, INC.
"Serving the University Community"
MU Bldg.

Patronize Your Advertisers

OSU Drops Opener 66-58



Beaver Bomber

The San Francisco Dons successfully contained guard Jim Jarvis holding him to just seven points last night.

By JOHN SALZER
Sports Editor

The Oregon State Beavers were defeated last night 66-58 by the San Francisco Dons, the nation's eighth-ranked team. The game was typical of most season openers as both teams were guilty of more than the normal amount of ball control errors.

The Dons were led by junior guard Ross Gumina who scored 23 points. Several times during the game the Beavers looked like they were about to close the gap on the Dons and each time Gumina cashed in a timely free throw or basket.

The big star for the Beavers must be junior transfer Charlie White. He cashed in six buckets and two free throws for 14 points and played a standout role on defense. Several times he jumped high into the air to out-rebound the Don's high men.

Every time Beaver guard Jim Jarvis got his hands on the ball there were several Dons on him and the Oregon State guard was rushed on almost every shot and scored only seven points.

The Dons built up a nine point half-time lead and were never seriously threatened by the much smaller Beaver five. The Beavers were able to contain San Francisco's big gun, All-American Ollie Johnson, yielding him only 16 points.

Dave Fox didn't see any action in the first half but came off the bench to spark the Beavers in the second half and hit on his first three floor shots and helped close the gap to five points with ten minutes remaining.

Rick Whelan hit on eight long field goals to take scoring honors for the Beavers with 16 points, ten of which came in the second half when the Beavers outscored the Dons 34-33.

The big difference in the game was the height advantage that the Dons had over the Beavers. The Beavers had to be content with getting the one good shot and hoping it would go in as the Dons controlled both boards.

The Rooks opened their season on a good note downing the Clark College five.

Next on the Beaver schedule is a game Saturday here in Corvallis against the Washington Huskies.



Jim Kraus
Beaver Pivot

Last PAC Stats Lack OSU Talent

SAN FRANCISCO (AP) — The Pacific Athletic Conference released today its final statistical report of the football season. Only one Oregon collegiate player was a conference leader. That was Oregon quarterback

Bob Berry, tops in touchdown passes with 15.

Ray Palm of Oregon was second in pass receptions with 42, and Oregon State's Len Frketch was second in punting with a 40.9 average.

Berry was third in passing with 106 completions, and fourth in total offense with 1,533 yards. Paul Brothers of Oregon State was fifth in both total offense (1,487 yards) and passing (75 completions).

Steve Clark, OSU placekicker, was fifth in scoring with 40 points.

Olvin Moreland of OSU was fourth in pass receiving with 35 catches.

No other players from Oregon were in the top five of any category.

The leaders: Scoring: Mike Garrett, USC, 62 points.

Total offense: Craig Morton, California, 1,833 yards.

Passing: Garrett, 948 yards; Rushing: Morton, 185 completions.

Receiving: Jack Schraub, California, 52 catches.

Punting: Dave Lewis, Stanford, 43.7 average.

National Basketball Association
By THE ASSOCIATED PRESS

Monday's Results
No games scheduled
Today's Games
Detroit vs. Cincinnati at Indianapolis

Boston at New York
Los Angeles at Philadelphia
Baltimore at San Francisco
Wednesday's Games
New York at Boston
Cincinnati at Detroit
Los Angeles at St. Louis
Baltimore vs. San Francisco at San Jose, Calif.

STAFF FOR THIS ISSUE
News Editors: Linda Hilley
Janelle Willford
Lois Harris

PSC Rolls By Beaver Bowl Squad By 86

Portland State College completely dominated Oregon State last Friday in the men's bowling matches at Portland as their 'A' and 'B' teams both won. The OSU first team lost by a total of 89 pins while the second team did little better as they lost by 86 pins.

In 'A' team play, OSU took the first line by a score of 969 to 858. PSC bounced back and won the second game by a 1,087 to 932 margin and in the third game with a score of 970 to 925. OSU had a total pin count of 2,826 where PSC scored 2,915.

OSU's Roger Phelps rolled the high series with a 626. He had individual games of 222, 191 and 213. Manuel Aertes of PSC bowled a 609 series with games of 165, 255 and 189.

For OSU, men who rolled 200 or better games were: Mike Dunham, 213; Joel Herndon, 209; Dick Koopman, 205; and Roger Phelps, 222 and 213. Portland State had five games better than 200.

In 'B' team play, OSU lost the first two lines by scores of 929 to 875 and 1032 to 996. They won the final line 960 to 956. OSU knocked over 2,831 pins as compared to 2,917 for PSC.

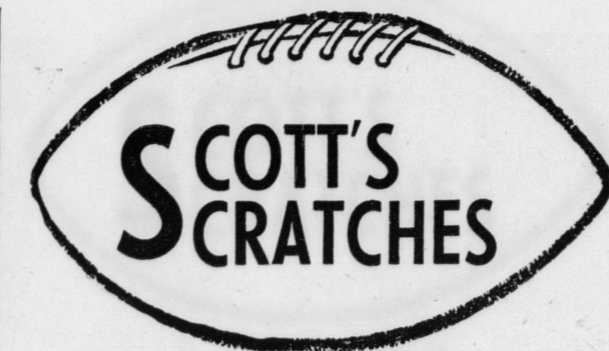
The only two 600 or better series came from Oregon State's Steve Byrd and Chester Chee who bowled 614 and 613 respectively. Byrd rolled games of 208, 203 and 203. Chee rolled a 171, a 246 and a 196. PSC had no 600 series because some of their members rolled a game with the varsity.

OSU's 200 or better games were rolled by: Chee, 246; Larry Gallego, 218; and Byrd, 208, 203 and 203. PSC rolled three 200 or better games; one, a 268 by Frank Kosderka.

Oregon State University won their first bowling match of the season as they defeated Camp Adair by a 2,706 to 2,682 margin.

OSU won the first two lines by scores of 904 to 853 and 968 to 877. Adair won the last by a score of 952 to 834. High series was rolled by Adair's W. H. Manson with a 613.

Two hundred or better series for OSU were rolled by Mike Dunham, 224; and Dick Koopman, 15. Camp Adair's 200 or better games were rolled by Jim Dunn, 204; Glenn Pruet, 213; and Manson, 219 and 218.

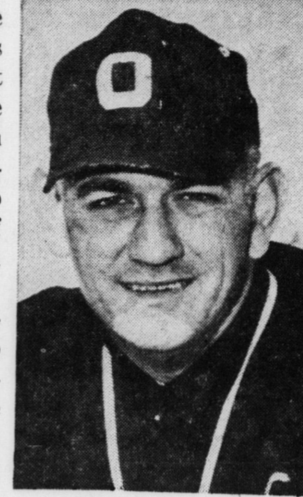


By SCOTT THOMPSON

"Light the lights, curtains up, everything's coming up roses . . . We're in, hooray, whoopee, and all that sort of stuff. Mixed-up, don't know what we're talking about . . . well get hep . . . Oregon State's going to the Rose Bowl to face the University of Michigan on New Year's Day in Pasadena, Calif.

Not only are Beavers happy to be playing in the oldest of all the New Year's Day football games, but they're delighted to have the University of Michigan as their opponents. "Michigan compares favorably to us in both size and style of play," explained OSU coach Tommy Prothro.

Warning to the Beavers though, and we'll echo the words of Oregon Journal Sports Editor George Pasero, the Rose Bowl is no lark, especially in view of the feeling the people of Southern California will have toward the Orange-men. A humiliating defeat at the hands of Michigan might mean disaster as far as future Rose Bowl trips are concerned . . . The Beavers have been chosen as the "most representative" team in the conference, and "most representative" they must be.



TOMMY PROTHRO
. . . Loves those Roses

Everyone Should Have Chance

To continue along the Bowl them, we sure hope every student that wants a ticket to the game will be given a chance to purchase the duet. After all, the game is for the students, and if there is a limit set as to how many student tickets will be offered for sale, many will miss out on the chance of a life time. Each student should have the opportunity to buy one ticket, and then if any remain, they should be offered to alumni, etc. . . . any other course of action on the part of the Athletic Department would be a real injustice to the students.

Seems that the Southern California student newspaper, the Daily Trojan, foresaw the action of the faculty representatives when the student Daily ran this headline after USC bombed UCLA 34-13 . . . "Footballers Pace Stacked Deck" . . . the story that follows quotes USC head coach John McKay as saying, "Last year we were the most representative team — but we didn't get any votes. We've never been lucky getting votes from all those state-sponsored schools." McKay would have improved his luck quite a bit this year if his team had won one or two more games . . . anyway, the Trojans have already lost to Michigan once this year, and why should they get a chance for a repeat performance . . . certain calls get boring sometimes.

Get There Early

For those of you who are planning to attend the Bowl game, take it from someone who was there last year . . . get to the game early, or you might find yourself listening to the contest on your car radio as you wait on one of the two roads going down into the Bowl to find a parking place. Best idea is to go around 11 a.m. and take a picnic lunch . . . there's a golf course, used for a parking lot during the game, that serves as a nice shady spot for a picnic . . . and don't worry, you won't be the only person out there, everyone who has ever been to the game follows this course of action. Oh yes, you'll get a chance to see the sun too . . . I know it sounds unusual, but the skies will probably be clear and the temperature in the 70's.

In the final AP football ratings OSU ended up eighth, USC tenth . . . see, even AP agrees with the faculty reps.

R-Bowl Ticket, Trip Sale Rushed

The rush for Rose Bowl tickets began Monday at Michigan and Oregon State universities. Students and townspeople formed a block-long line at Corvallis, while air tour tickets on six planes sold out quickly at Ann Arbor.

The tour director, who collected \$201 each from more than 600 Michigan students, said it was the greatest first-day interest in Rose Bowl trips in 10 years.

Reactions Varied

Meanwhile, reactions continued to flow over selection of Oregon State by the Pacific Athletic Conference. Many expected Southern California to get the invitation after its upset of top-ranked Notre Dame Saturday.

However, OSU had an 8-2 season record compared to USC's 7-3. The teams tied for the conference championship.

One Los Angeles writer called for a breakup of the conference, Warren Dorn, chairman of the Los Angeles County Board of Supervisors, suggested a playoff game between OSU and USC.

Rule Violation

Coach John McKay of USC said it would violate the collegiate rules.

The rest of the Pacific Coast voiced general acceptance of the decision. In Oregon, there were no dissenting voices among coaches, school officials and sports writers.

The OSU team was jubilant, said senior tackle Rich Kooper.

"I dreamed all my life of one day going to the Rose Bowl. This is the most important thing that can happen to a football player. It's our job now to do well against Michigan." Victory over Michigan will be a tough assignment. The big ten champions had an 11 record, losing only to Purdue by one point, and won fourth place in the final Associated Press poll. OSU was ranked eighth, USC tenth.

ANN ARBOR, Mich. (AP) —

Sales of air tour tickets to the Rose Bowl game was stopped Monday afternoon after 600 persons paid \$201 and filled six available airplanes.

University of Michigan officials reported record sales as students lined up for plane, train and bus tours. Michigan plays Oregon State in the Rose Bowl New Year's Day.

Beta's Triumph; IM Grid Champs

Beta Theta Pi won the all-school flag football championship last Tuesday with a 21-0 victory over independent champion Sigel Hagall.

Tom Thurber opened the scoring for the Betas midway through the first half with a five yard romp for six points. The try for PAT failed.

Later in the first half Dave Hobson caught a Sigel Hagall ball carrier behind his own goal line for a two point safety. The half ended with the Betas ahead 8-0.

Early in the second half James King scored a TD on a four yard sweep which put the Betas ahead 14-0. Again the PAT attempt failed.

The Beta's Russ Maddox intercepted a pass late in the second half and raced 60 yards for what seemed to be another TD, but the play was nullified because of a penalty. After Maddox's interception Tom Thurber passed to Jamie King. King caught the pass and then lateraled to Al Lehrer who then carried the ball 50 yards to the PAT to round out the scoring for the winners.

WE'RE LITTLE ANGELS
at fixing
Heavenly Soles and Heels
Campus Shoe Repair
15th & Monroe
7:30-6:00 Mon.-Fri. 8:00-5:00 Sat

HI-FI & Stereo Components
• Tuners & Amps. Fisher, Sherwood Harmon-Kardon
• Kits Fisher, Eico, Dynakit Harmon-Kardon
• Speakers J. B. Lansing, Jensen Electro-Voice
• Turntables Rik-O-Kut, Garrard, Audio Empire, Miracord
TAPE DECKS by Sony, Viking, Concord
Your Hi-Fi Component Headquarters in Corvallis
DAY & CAMP TV
916 Beca Open 9 to 9 Daily 753-4768

DEPARTMENT OF SPEECH
OREGON STATE UNIVERSITY
presents
HAMLET
by
William Shakespeare
(Directed by Dr. Angus Bowmer)
MITCHELL PLAYHOUSE
Tuesday Through Saturday
December 1, 2, 3, 4 and 5
Box Office Opens Monday, November 30
At 9:00 a.m.
Curtain at 8:15 p.m.

Beaver Skiers Second To UO In First Meet

Oregon State's Ski Team opened its season November 21 at Mt. Hood by finishing a close second to the University of Oregon in a quadrangular meet. Linfield College captured third place and Lewis and Clark College took fourth. The Ducks' combined time in the downhill event just nipped OSU's time of 72 seconds by 6 second.

The Beaver skiers were led by veterans Roger Schaad and Peter Francis. Other team members competing were Tom Olson, Mike Blair, Rich Margosian and Steve Carlson.

OSU's women's team of Chris Valentino, Andrea Beardson and Jean Evans also raced at Mt. Hood. This is the first year that the Beavers have fielded a women's squad, and the girls fared well in their initial schooling.

OSU will field a veteran squad this season, most of the members having seen extensive competition. According to team captain Rich Margosian, the prospects for a successful season look good. The Beavers have both strength and depth in the Alpine events, consisting of the downhill and slalom. OSU will also have a Nordic team, which will compete in cross-country and jumping.

The Beavers will travel to Reno, Nevada and McCall, Idaho for big invitational meets later in the season. The next race for the squad will be the Oregon College Invitational Meet Saturday at Mt. Hood.

Beaver Grapplers Set For Seattle WIT Meet

Oregon State's grapplers open the 1964-65 season, Saturday, Dec. 5, when they travel to Seattle to participate in the 6th Annual University of Washington and Oregon.

Participants in this tournament will represent schools from throughout the Pacific Northwest, although most of the colleges represented will be from Washington and Oregon. This year, for the first time, competition will be held in two separate divisions:

Class "A" — open to varsity members of a four year school, participating in their sophomore, junior or senior year of intercollegiate competition.

Class "B" — open to freshman members of a four year school participating in their first year of intercollegiate competition and members of Junior or Community College teams.

A modified double elimination tournament will be held, allowing each man the opportunity to wrestle at least twice.

BOOKS
A few of the
NEW BOOKS
Received by our General Book Department
During the Last Week!
Fitzgerald — THE FITZGERALD READER . . . \$ 4.95
Langer — PHILOSOPHY IN A NEW KEY . . . \$.60
Kasler — MODERN GARDENS AND THE LANDSCAPE . . . \$ 5.95
Waskow — THE WORRIED MAN'S GUIDE TO WORLD PEACE . . . \$ 1.25
Thourel — THE USE OF FERRITES AT MICRO-WAVE FREQUENCIES . . . \$ 6.50
Janowitz — THE MILITARY IN THE POLITICAL DEVELOPMENT OF NEW NATIONS . . . \$ 1.50
Leydet — TIME AND THE RIVER FLOWING—Grand Canyon . . . \$20.00
Wiener — EX-PRODIGY . . . \$ 2.45
Andrews — MOLECULAR COMPLEXES IN ORGANIC CHEMISTRY . . . \$ 8.75
Wolf — ISOTOPIES IN BIOLOGY . . . \$ 2.45
Reese — SECRETS OF MODERN POKER . . . \$ 3.95
Crouthamel — PROGRESS IN NUCLEAR ENERGY—Anal. Chemistry . . . \$ 4.25
Ehrenfeucht — THE CUBE MADE INTERESTING . . . \$ 3.75
Lindsey — THE PULLMAN STRIKE . . . \$ 2.95
Strauss — NEW WAYS TO BETTER MEETINGS . . . \$ 3.95
OSU BOOK STORES, INC.
"Serving the University Community"
MU BLDG.

2 Locations . . .
238 S. 2nd . . . 753-3631
2017 Monroe (Campus) . . . 752-5252
SCOTT'S
Cleaners & Tailors
Alteration and Repairing

Christ To Be



Members of the Kierska, Michele promptly at 8 p.m. Coliseum will be in

"We Sing of Christmas" chorals Christmas presented by the University Chorus at 8 p.m. December 6 at Gill Coliseum, will be a single bear proach the center of to sing the "Covent She will be followe

Felix New

By SUSAN MAC Reporter

On his third lecture OSU Felix Greene e China today is of importance to the w Greene addressed the convocation in the yesterday morning. was entitled "What China?"

Greene is a season er of the internatio and has made three Chinese mainland sin individual Communist rul

Three Hurdles N Greene opened his plaining that there main hurdles that te pain our discussion of day. First, we realize ness hostility toward ed States. Our reactio hostile and we la standing. Second, th mainland is control Communist regime, a which we heartily c Finally, and most im the ignorance of the people. They have be misinformed by the press, he said.

Persons in the Uni all realize that China than the United S tend to forget that it infinitely older count noted. China has a t cultural heritage, ah years of unbroken c tory. The Chinese proud people and do be slighted in respec history. In the Unit persons are incline China as an "up-sta try.

The population of C PASADENA, CAL day 714,206 miles fr hour on its missio first time.

KHARTOUM, SUD the leader of the Cong to the U. S. to preser turmoil. He also anno the rebel self - sty at Stanleyville "with

WASHINGTON: F denied today any kn payoff to the 1960 Ke of his government con committee which a Baker to answer que

TEL AVIV, ISRA fire yesterday for th area, scene of a he spokesman said a S border patrol inside nearby, the Israelis

UNITED NATION met with Soviet Forei reports that the Russi to compromise on

State NOW SHOWING
some women can't help being what they are... HE SWORE HE'D NEVER TOUCH HER AGAIN
KIM NOVAK - LAURENCE HARVEY
IN W. SOMERSET MAUGHAM'S
OF HUMAN BONDAGE
MORLEY MCKENNA - LIVSEY - HEDLEY
A MASTERPIECE OF HUMAN DESIRE!

"what work can I do at IBM?"
At IBM you'll find a variety of work to do. Your choice may be in one of several areas, including Science and Engineering, Manufacturing, Programming, Marketing, Systems Engineering, Customer Engineering, or Finance and Administration. Men and women with degrees in engineering, the sciences, mathematics, and business administration will find many opportunities for achievement.
See IBM. Your placement officer can make an appointment with our interviewers. Or write directly to Manager of College Relations, Dept. 882, IBM Corporate Headquarters, Armonk, New York 10504. IBM is an Equal Opportunity Employer.
Interviews January 14, 15
Applied Mathematics, Applied Mechanics, Data Communications, Digital Computers, Guidance Systems, Human Factors, Industrial Engineering, Information Retrieval, Marketing, Manufacturing Research, Microwaves, Optics, Reliability Engineering, Servomechanisms, Solid State Devices, Systems Simulation, and related areas.
IBM