





# Daily Barometer Society

BARBARA ASMERVIG, editor

## Phi Chi Theta Initiates 25

Phi Chi Theta, national honor society for women in business and economics, initiated 25 new members at OSU last week. The new members are:

**Initiated:** Bloom, Marilyn Carl, Merrie Conder, Ginger Daggett, Pam Evans, Irene Gallaher, Margaret Gardner, Linda Greer.

**Others initiated were:** Susan Guenther, Molly Hoover, Jo Bengoa, Susan Berg, Gay Anne Keith, Weslie Kirby, Cheryl Matzke, Unajeon McAlpine, Saron Melby, Judy Steel, Nancy O'Rourke, Zoe Vonna Palmrose, Jan Parr, Myrna Shumway, Jan Simonsen, June Strickland and Bonnie Wilson.

## Miss Mixer Court



Members of the Junior Interfraternity Council "Miss Mixer" court are from left Linda Wanamaker, Susan Trachsell, Liz Pepru, Susan Day and Susan Ericksen.

## Jogging 'Good Habit;' Is Feel Better Program

Start a habit that is good for you — try jogging. Many at Oregon State have and find it is a hard habit to break.

"It's a feel better program that I don't have to worry much about," said Fred Shideler, assistant to the president. A number of the faculty use the track at noon. Others jog early in the morning or at night.

The popularity of jogging has increased among students too. Used as a study break, jogging is a good tension reliever as well as a helpful exercise.

Physically, jogging is very beneficial. Strength and agility are improved and muscles are toned. The heart pumps more forcibly as it gets stronger and has a longer time to rest. The lungs take in more air and makes the body perform more efficiently.

Building up a gradual endurance is important. Many start out jogging just a few blocks and eventually pass the ten mile mark.

Jogging should not be strenuous, but it should be continuous. "It's a short part of the day that is neat," said Richard Cramer, a assistant professor of Physical Education, "and once you start, it makes living better."

Jogging is now offered as a P.E. course for men at OSU. Fitness Appreciation, as the course is titled, is open to over 100 men each term.

Started five years ago on an experimental basis, the interest has increased each year. Students take individual tests at the first of the term and again at the end to show improvement. During the term they increase jogging distance from one mile to twelve.

Joggers, whether in class or on their own, should pay attention to a few rules. "A good pair of shoes are important," said Cramer. Don't ignore sore feet or injuries while jogging.

Jogging with a partner, shuffling to catch your breath if tired, and obeying traffic rules are other reminders for the jogger.

**BAROMETER STAFF**

News Editor — Roy Gault  
 Managing Editor — Joanne Ewall  
 Assistant — Suzanne Olson  
 Editorial Page Editor — Ann Erickson  
 Assistant — Tom Brown  
 Sports Editor — Gordon Rosenberg  
 Assistant — Bob Allen  
 Copy Editor — Kris Paulson  
 Assistant — Nancy Anderson  
 Society Editor — Barb Asmervig  
 Assistant — Sue Phelps  
 Publicity News Editor — Charlene White  
 Photographer — Craig Landon  
 Assistant — Wayne Cockrell

## LOU RAWLS



### SOULIN' ON CAPITOL

FRI. — SAT. — SUN.

Our Regular \$3.49 **\$2.97** each All His Albums



You Always Pay Less At... Open 9-9 Daily 10-7 Sundays

## OSU To Host Peter Cottontail

A visit from Peter Cottontail and a chance to search for eggs will highlight the ASOSU-MU Easter Egg Hunt April 7 for Corvallis area children ages 5-9.

Living groups will compete in an egg decorating contest to be included as part of the activity, co-sponsored by the MU and ASOSU.

Committee applications for general chairman and chairmen in charge of finances, publicity, hosts and hostesses, decorations and eggs must be turned in to the activity center before 5 p.m., Jan. 26.

More than 2000 children attended the first hunt in 1966, although none was held last year because Easter was the Sunday of spring vacation.

## Sue Collins is out to get you!



But she doesn't know it. Sue's a good driver. And that's the trouble. You've come to trust her over the years... but really, you can't. Because even the best drivers end up in some of the worst accidents.

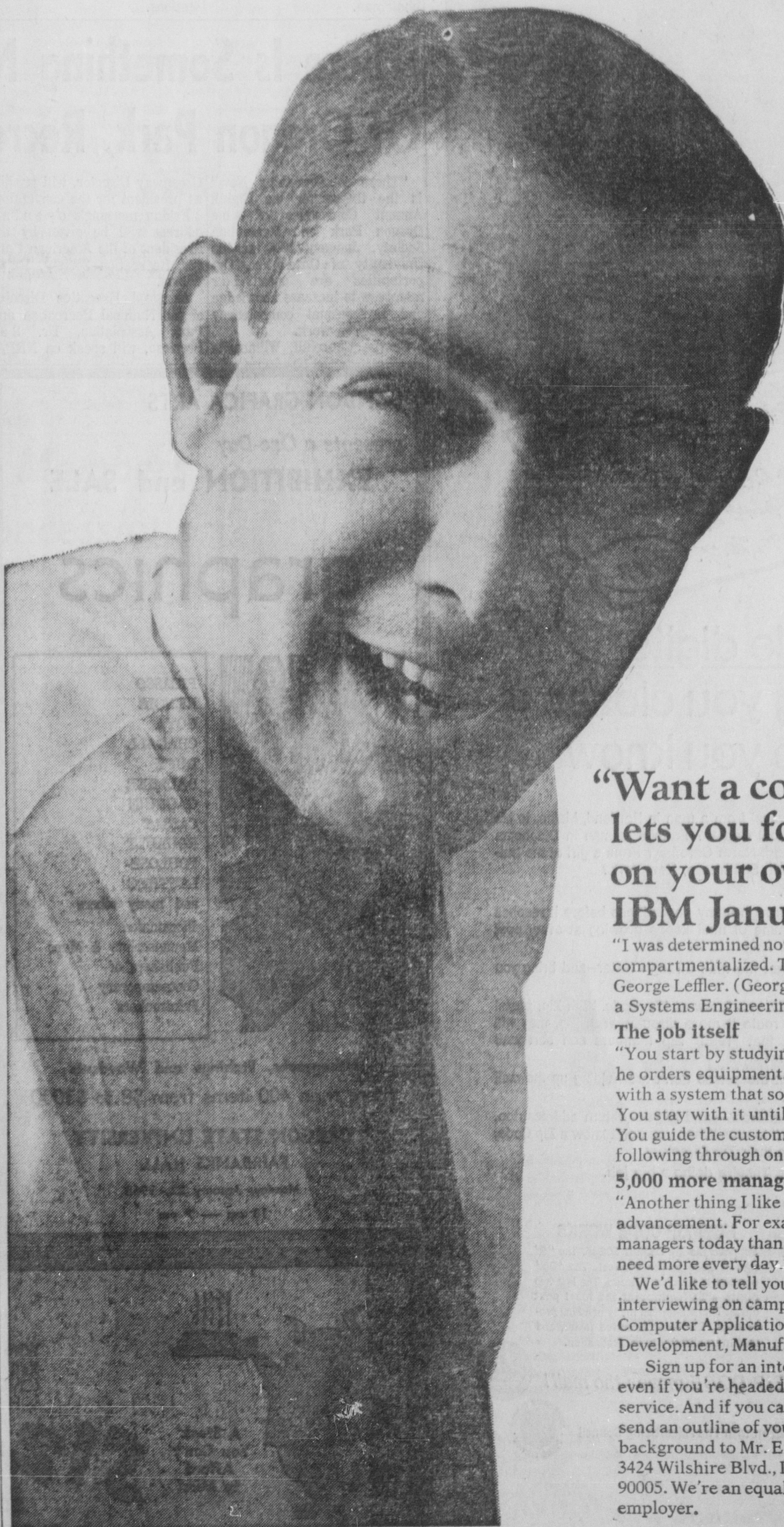
Drive defensively, and you won't end up on the receiving end of some other driver's mistake or sudden move. At intersections, never assume the right-of-way. Make defensive driving pay off by practicing it every second of every minute you're behind the wheel. It takes extra effort—but that extra effort's worth it.

The forty-nine thousand people who died on our highways last year would be the first to agree. If they could.



Watch out for the other guy!

Published to save lives in cooperation with The Advertising Council and the National Safety Council.



## "Want a company that lets you follow through on your own ideas? See IBM January 25th or 26th!"

"I was determined not to take a job where I'd be compartmentalized. That's one reason I chose IBM," says George Leffler. (George, who has his B.S. in Engineering, is a Systems Engineering Manager in Marketing.)

### The job itself

"You start by studying a customer's business even before he orders equipment. Then it's up to you to come up with a system that solves the customer's problems. You stay with it until it's installed and fully operational. You guide the customer every step of the way. So following through on your own ideas is part of your job."

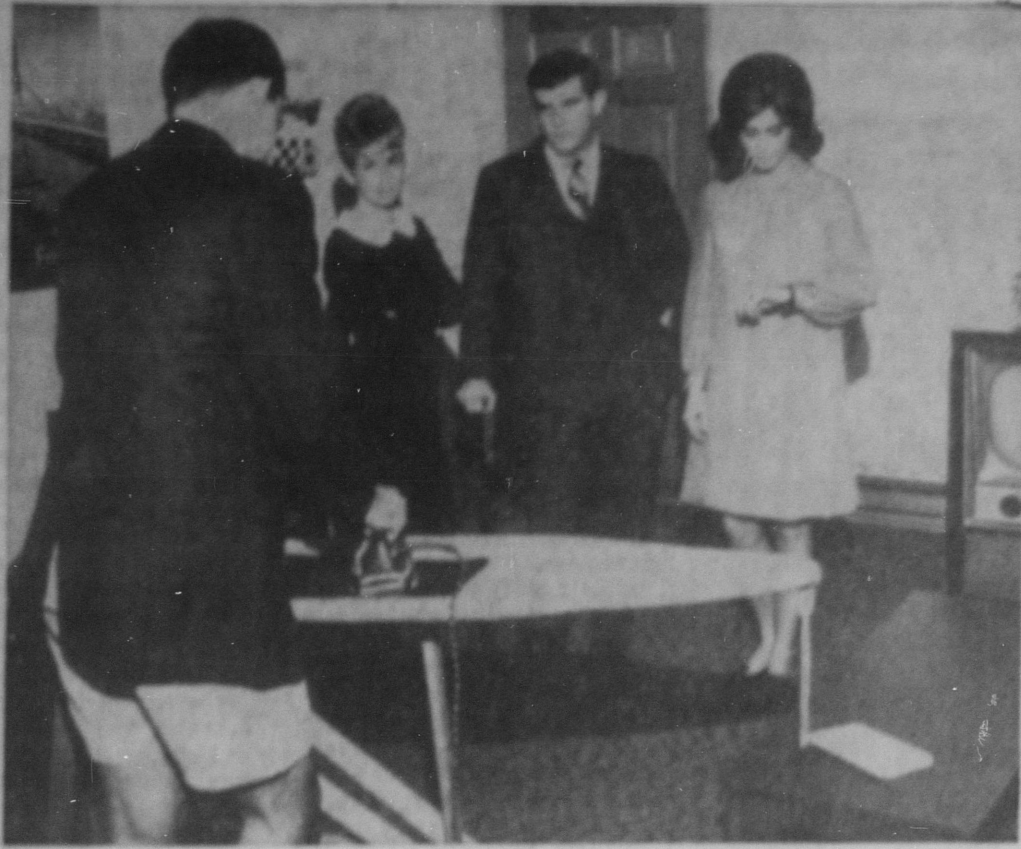
### 5,000 more managers

"Another thing I like about working here is the chance for advancement. For example, IBM has over 5,000 more managers today than they had four years ago. And they need more every day."

We'd like to tell you more about the IBM story. We'll be interviewing on campus for careers in Marketing, Computer Applications, Programming, Research and Development, Manufacturing, and Field Engineering.

Sign up for an interview at your placement office, even if you're headed for graduate school or military service. And if you can't make a campus interview, send an outline of your interests and educational background to Mr. E. C. Purtell, Jr., IBM Corporation, 3424 Wilshire Blvd., Los Angeles, Calif. 90005. We're an equal opportunity employer.





**You've Got Three Seconds, Buddy**

Proper dress for the Sophomore Cotillion is being worn by the patient three and almost by the fourth party, except for the minor delay of ironing his trousers. Pictured left to right are Ted Powne, Stephanie Sanger, Steve Enna and Martha Dodson. The semi-formal dress will be appropriate for the Saturday night Lou Rawls concert at 8 and the dance that follows. (Photo by Craig Landon)

**Party Planned By Club Jan. 21**

Bon Soir! Guten Abend! Buona Sera! No matter what the language, "Good evening!" is a friendly way to greet any friend.

Meet some new friends Sunday from 7:30-9 p.m. at a gathering for American and foreign students. The Alpha Chi Omega house at 310 N. 26th will be the location of the party.

The evening is sponsored by People to People and the Cosmopolitan Club, an organization for foreign and American students on the OSU campus.

"Our purpose is to promote international friendship and understanding," explained Helen Paulus, an executive member of the organization.

She continued to say that the get-together will include entertainment, refreshments, guitar playing, singing and dancing. Native songs and dances of the different countries will also be featured.

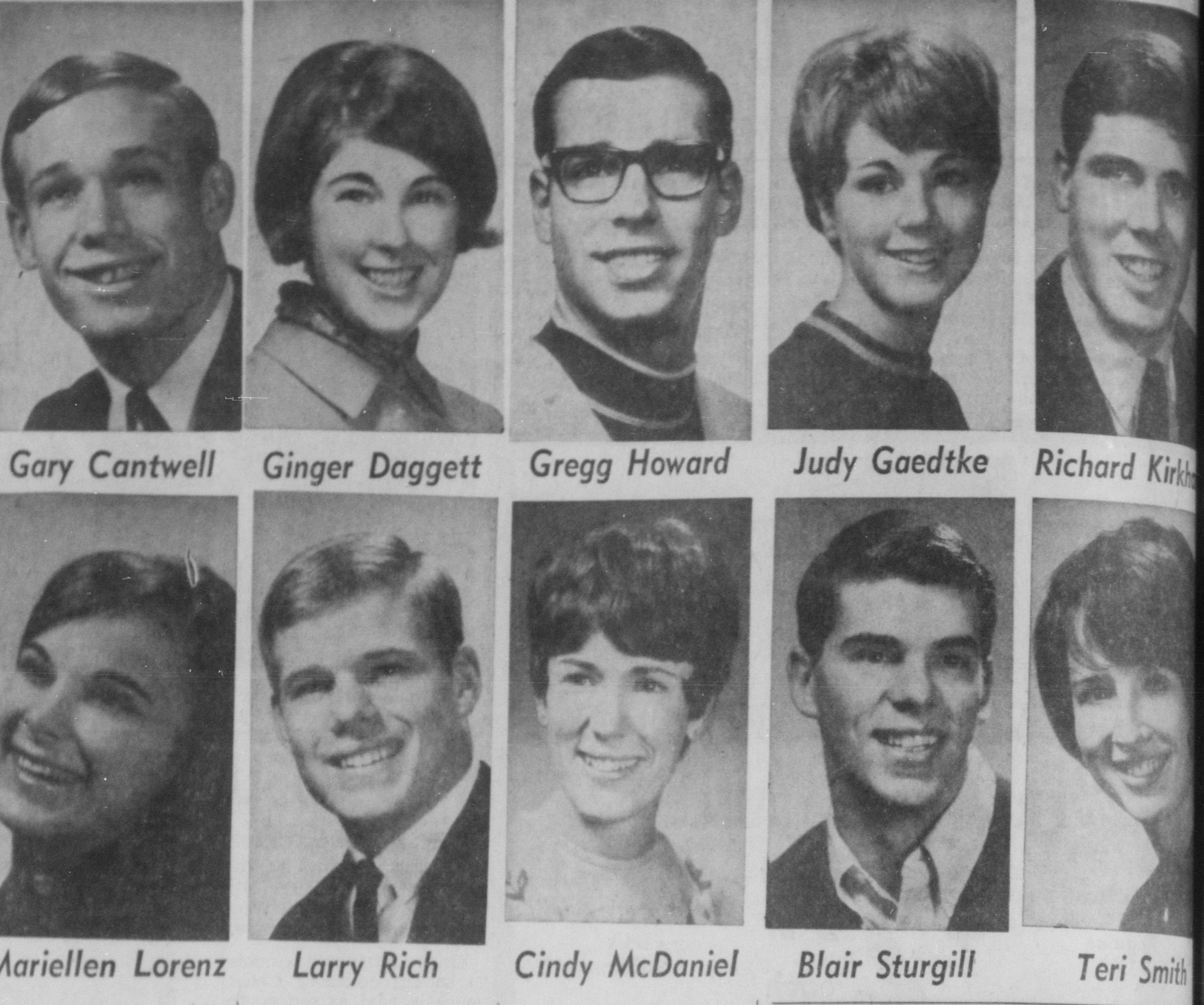
"The evening should be a lot of fun. We just want everyone to get together and meet one another. Everyone is welcome," emphasized Miss Paulus.

**Living Group News**

**Sigma Alpha Epsilon**

Officers for 1968 of Sigma Alpha Epsilon include Clyde Saylor, president; Bill Hopper, vice president; Chris Wahle, warden; Duane Barton, recorder; Larry Rich, correspondent; Rick Strom, treasurer; Chuck Adams, scholarship chairman; Tim Gleason, pledge trainer; and Jim Blackford, social chairman.

**Sophomore Cotillion Intermission To Feature Betty Coed-Joe College**



**Gary Cantwell Ginger Daggett Gregg Howard Judy Gaedtke Richard Kirk**  
**Mariellen Lorenz Larry Rich Cindy McDaniel Blair Sturgill Teri Smith**

**'There Is Something New' Theme Of Oregon Park, Recreation Meet**

"There Is Something New" is the theme for the Eighth Annual Conference of the Oregon Park and Recreation Society, January 19-20 at the University of Oregon. Opportunities are open for members to increase knowledge and professional competency in recreation work.

Greenway Director, will preside as president for the convention. Friday morning's opening address will be given by the President of the American Park and Recreation Society, Ralph Wilson.

Assistant Executive Director of the National Recreation and Park Association, Dr. S. A. Prezioso, will speak on NRPA

OPRS and their relevance to professional recreationists and recreation students.

Swap sessions Friday afternoon will give special interest groups time to discuss mutual problems.

Relationship of urban planning to parks and recreation will be the subject of the Friday evening session. Dr. William B. Dale, professor of Urban Planning, University of Oregon, will speak.

Responsibilities of OPRS, revenue sources and liability of the OPRS will be topics of the Saturday morning program.

Following that afternoon, lifetime sports, new ideas in park planning and portable park concepts will be discussed.

Conference President-Elect Gene Herlocker, Corps of Engineers, Lowell, Oregon, says registration is 9 a.m.-4 p.m. Friday and 8:30-10 a.m. Saturday. No registration fee is required of students; others pay \$7.

For further information, contact the Recreation Department, Men's Gym, or call 754-3221.

Library and in front of Bexell Hall.

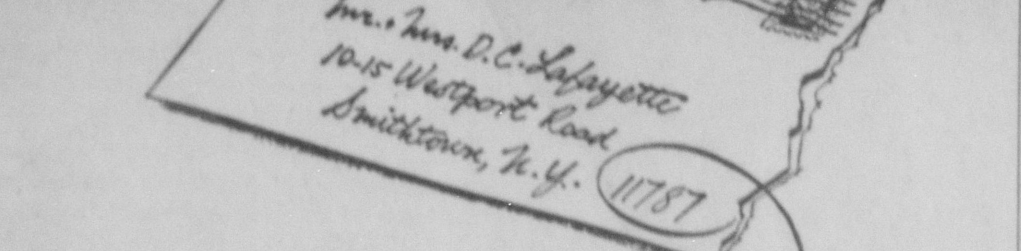
Any student with his fee receipt and I.D. card may vote for Betty and Joe who represent the ideal college student.

The winners will be announced during intermission at the Sophomore Cotillion Lou Rawls concert, Saturday at 8 p.m. in Gill Coliseum.

Tickets are still available in the MU Activity Center, or may be purchased at the door of the concert, announced Rick Gaffney, general chairman.

Dress for the Sophomore Cotillion is semi-formal. A fast dance, featuring "The Patriots" and "The Genetics" will follow the concert in the MU Ballroom from 10 p.m.-1 a.m.

Tickets for the dance are \$1 per couple or \$50 stag and may be bought at the door. Gaffney emphasized that anyone may attend the dance, not only those attending the concert.



**How five little digits are bringing you closer to everyone you know**

How long does it take a letter to travel from a man in Portland, Maine, to his grandmother in the Houston Medical Center? From a woman in Oklahoma City to her soldier son in Fort Bragg, North Carolina? From a girl at the University of Michigan to her parents in Smithtown, New York?

Maybe overnight. Maybe longer.

Because every letter must go through many post offices before it reaches its destination. And since the volume of mail keeps growing at every post office, each letter may wait a little longer to be sorted.

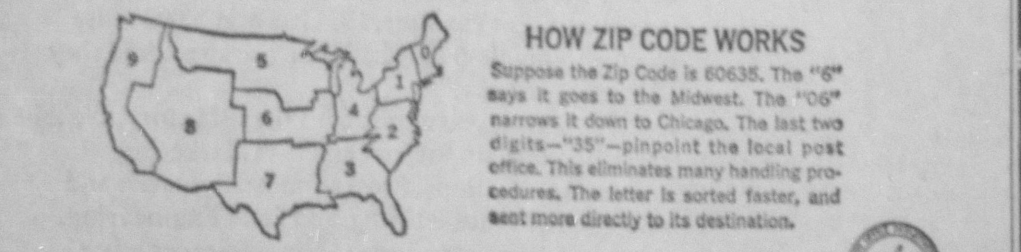
But now there's a new way to get the mail through faster—and bring you closer to everyone you know.

It starts with those five little digits you know as Zip Code. With Zip, postal workers can sort mail faster and route it more directly. With Zip, they will use modern electronic machines that "read" Zip numbers and sort mail fifteen times faster than ever before!

Many people use Zip Codes. But those who don't are holding up the mail for themselves and everyone else.

Add Zip Code to every mailing address—and to your return address, too. Then others can easily Zip their mail to you. When you don't know a Zip Code, call your post office or look it up in their Zip Directory.

Remember those five little digits. They're doing a big job.



**HOW ZIP CODE WORKS**

Suppose the Zip Code is 60635. The "6" says it goes to the Midwest. The "06" narrows it down to Chicago. The last two digits—"35"—pinpoint the local post office. This eliminates many handling procedures. The letter is sorted faster, and sent more directly to its destination.

**Mail moves the country—ZIP CODE moves the mail!**

Published as a public service in cooperation with The Advertising Council

**LONDON GRAFICA ARTS**

presents a One-Day **EXHIBITION and SALE**

**graphics**

PICASSO  
 RENOIR  
 GOYA  
 CHAGALL  
 DUFY  
 DAUMIER  
 GAUGUIN  
 CASSAT  
 ROUAULT  
 TOULOUSE-LAUTREC  
 and many others

Illuminated Manuscripts & Maps  
 Publishers of Contemporary Printmakers

Lithographs, Etchings and Woodcuts  
 More than 400 items from \$8 to \$3000

**OREGON STATE UNIVERSITY**  
 FAIRBANKS HALL  
 Monday, January 22, 1968  
 10 am — 7 pm

**Top Sirloin Steak**

With Potatoes Roll & Butter... **\$1.29**  
 (Children's portions Half Price)

**SIZZLER**  
 STEAK HOUSES  
 9th & Circle Drive, Corvallis

A Steak You Can't Afford to Miss!

**INTRODUCING BEAVER**

**OPEN HOUSE**

**LIVE BAND & FREE REFRESHMENTS**

**TONIGHT (Friday)**

8:00 p.m. 1:00 a.m.

**at the Sig Ep house**

224 N. 26th

**ON CAPITOL RECORDS:**

**THE SOUL SOUND OF Lou Rawls!**

A great selection of his albums featuring especially his two newest releases:

**Lou Rawls Soulin'** • 2566 • All soul and all singer... Lou Rawls and Whole Lot Of Woman, Love Is A Hurty Thing, Memory Lane, It Was A Very Good Year, Breaking My Back, and more.

**Lou Rawls Live!** • 2459 • The most sensational Lou Rawls recording ever made. Includes Stormy Monday, Southside Blues, I'd Rather Drink Muddy Water, Goin' To Chicago Blues, many more.

**O.S.U. BOOK STORES INC.**

BOOK STORE MU Bldg.  
 Campus Store Monroe St.

**Alcin**

**GORDON ROSENBERG**  
 Editor

**SONY RADIOS**  
 ★ Sony To Music Books ★ Po ★ Records -

**HOPE'S GLOB**

**Orient TOUR**

**HOPE'S GLOB TRAVEL SE**

**"A Sale W**

**CITIZEN**

# Alcinder, Hewitt One-Two Scorers, As Top Clubs Hold Edge

**GORDON ROSENBERG**  
Barometer Sports Editor

OSU's powerful Bruins lead the Pacific-8 offensive statistics in the first two weeks of conference activity.

Bruins have scored an average of 89.7 points a game in the first two weeks of conference activity. USC is second with 87.3 points. The Trojans are tied with UCLA for conference leadership, having averaged an even 80 an outing.

**Duck Lead OSU**

Washington State is third with 77.3 points a game, and wins the loop's only non-conference game, averaging 73. Oregon State is fourth, scoring 65 points.

The Beavers lead the conference in field goal percentage, OSU has connected on 186 shots for a .532 average. UCLA is second in this category with a .483 clip, on 194.

**Taken Fewest Shots**

Beavers have taken by far the fewest number of shots, 235 attempts at the top. This explains why the clubs in shooting percent are at the bottom in total points scored.

Bruins are running far ahead of everyone in re-

bounding. Coach John Wooden's top-ranked club has grabbed 217 retrieves, as compared to 149 for the opposition—an advantage of 68 in only four Games. UCLA reached its rebounding peak in last Saturday's game with Stanford. Without Lew Alcinder, they out-rebounded the Indians 40 to 11, a fantastic edge.

**Five Teams Lose Board Battle**

USC is the only other team with a substantial rebounding edge, having grabbed 201 and given up 165, a margin of 36. The Bruins are averaging 54 a game in this department, while the Trojans carry a 50.3 per game average.

Oregon State is one of the five teams that are being out-rebounded. The Beavers rank last in total retrieves with 123. They have allowed 150 for a disadvantage of 27 in this vital department.

**OSU Sips To Third**

It's the Bruins and Trojans again in the defensive statistics. But the order is reversed. USC is giving up 64.5 points a game, while UCLA is a close second at 65.2. Oregon State is third here at 66, having slipped from first in last weekend's twin losses.

Washington State, led by Jim McKean's 20 of 21, is the top foul-shooting team at 77 per

cent. Oregon State is fourth at 70 per cent.

**Lew Scores 38**

In individual totals, Alcinder is running away with the scoring title. The 7-foot-plus all-American carries a 38-point average in three games. He has hit on 46 of 73 for a 63 per cent mark, third best in the league.

Southern California's Bill Hewitt is second to Alcinder with 25.5 points, and California speedster Russ Critchfield is a tight third at 25, despite the fact that he scored only 15 in the opener against Oregon State.

**Beaver Duo 7th-8th**

OSU's guard-center combination of Vince Fritz and Vic Bartolome are seventh and eighth. Fritz has scored 68 points for a 17-point average, while Bartolome has 60 points and a 15-point average.

As could be figured, McKean's 95 per cent leads the conference in free throws. Fritz, last year's leader, is tied for sixth with 24 of 30 for 80 per cent.

**Lacey Tops Shooting**

UCLA's 6-7 forward Edgar Lacey, back after missing a year with a knee injury, is better than ever. He has made 21 of 30 field goals for the top shooting percentage of 70. USC's Jim Marsh, another forward, is second at 139 on 23 of 36. Bartolome (.578) is fourth behind Alcinder. Both are centers, of course.

**Russ, Rick Lead Guards**

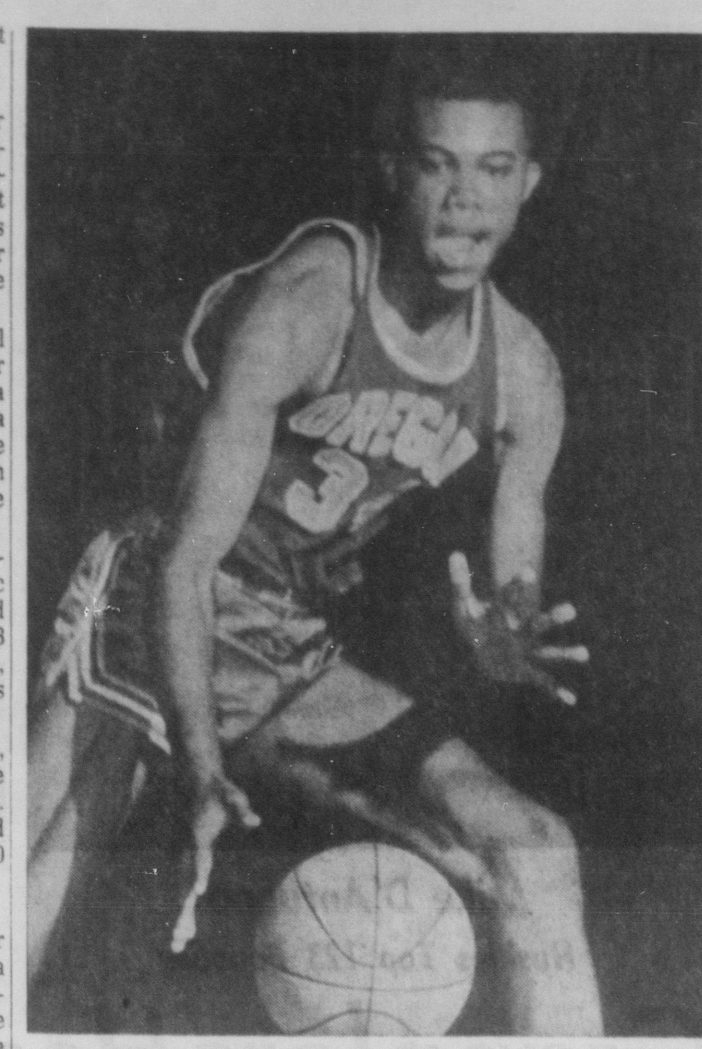
Top shooting guards are Critchfield, who is eighth with 43 of 82 and a .524 mark, and Oregon's Rick Abrahamson, ninth on the strength of a .513 percentage on 20 of 39.

We will give you one guess who the top individual rebounder could be? Naturally, it's big Lew.

**Lew Tops Rebounders**

Alcinder has grabbed 47 in his three games for an average of 15.7. But not too far behind are California's Bob Presley (56 in four games for an average of 14), and WSU's McKean, who has grabbed 52 for an average of 13.

Well, there it is. The big teams—USC and UCLA—lead the Pacific 8 in most team statistics. And the conference's big men—Alcinder, McKean, and Hewitt—lead most of the individual departments. So, what's new? The same three players dominated things last season, too.



Jumping Ken Smith Oregon Cornerman

## OSU Hunts Duck, Return To Form

By **GORDON ROSENBERG**  
Barometer Sports Editor

Oregon State's basketball team will be out to rebuild its winning style with a start in the right place tomorrow night.

The Beavers travel to Eugene to take on the cellar-dwelling Oregon Ducks in a game that does not count in Pacific-8 standings, but goes a long way toward determining the possessor of the Chancellor's Trophy for 1968.

**Beavers Hold Edge**

OSU holds an all-time edge of 123 to 97 over the Webfoots, over two non-NCAA teams, having built up most of that margin in the last 15 years. The Beavers have won 40 of 57 games during that span to gain the edge in the bitter rivalry.

Oregon has won the season's series, and with it the Trophy, only twice since 1952. The Charlie Warren-led Ducks swept four games in 1961, and last year's weak Duck team made its season a little more worthwhile by downing the Beavers three times in four outings. Oregon got its only Pacific-8 win of 1967 against the Beavers.

There is an adequate challenge for Oregon State. The Chancellor's award, which OSU has grown so accustomed to seeing in its trophy case, sits within Oregon's McArthur Court showcase.

The Ducks won both non-counters a year ago. They clobbered OSU, 63-51 in Eugene, and came back a week later to edge the Beavers, 56-55 in Corvallis.

Then, with OSU fighting for second place in the conference, and Oregon looking for its first

win after 12 straight setbacks, Oregon again stopped the Beavers, 62-55, to assure itself of the Trophy.

Oregon State captured the tie for second place with Washington State in the final game of the season, handing Oregon a tight 49-47 overtime loss. But the Ducks still went home with the series edge.

**Oregon Stumbles Again**

This season has been much the same for each team. Oregon State has an overall 65.5 mark, not counting victories over two non-NCAA teams. The Beavers are in the three-way tie with WSU and Washington in the middle of the Pacific-8, and Oregon is again wallowing in the all-too-familiar league cellar.

But all is not that bleak for the Webfoots. They have been averaging eight more points a game than the Beavers in Pacific-8 play.

**Smith Leads Ducks**

Colorful forward Ken Smith, in and out of the starting lineup, is still the leading scorer with 15.1 points a game for the season. He is also the number three rebounder with 65. That's one more than Oregon State's backboard leader—Gary Freeman, who has 64 in 11 games.

Transfer guard Billy Gaskins carries a 12.3 average, and at 6-foot is a strong rebounder with 47.

**Craven Top Board Man**

Top backboard man and a leading defender is 6-8 senior forward Bob Craven. He has pulled down 92 rebounds and has an 8.3 scoring average.

Coach Steve Belko has jug-



John Pinkstaff Webfoot Center Ready

gled his line-up all season. At this point, other probable starters are two-year veteran center John Pinkstaff and junior guard Rick Abrahamson. Pinkstaff has a 9.6 scoring average and 72 rebounds to his credit, while Abrahamson is averaging 9.3 points a game, with a win.

Both Teams Hungry

As they were last season, the Ducks are hungry for wins. You can bet they would like to start the series with the Beavers the same as they did a year ago averaging 9.3 points a game, with a win.

**CAR WASH**  
25c SELF-SERVICE 25c  
Convenient, quality performance  
905 Kings Road

**Richard Kirk**

**Teri Smith**

**Sony Radios** ★ V.M. Stereo  
★ Sony Tape Recorders  
★ Music Books ★ Packard-Bell Stereo & TV  
★ Records — L.P.'s & 45's  
★ Tape Your Own Car Stereo Tapes  
FREE With Purchase Of Blank Tape  
★ Tapes Only \$2.50

**Chase Radio & TV, Inc.**  
142 S. 2nd (Across from Montgomery Ward) 753-3310

---

**HOPE'S GLOBAL TRAVEL 1968**

**Orient TOUR**

Escorted by IRWIN C. HARRIS  
Manager Student Activities, Oregon State University

Complete Price of Tour including Meals and Accommodations \$859  
Detailed Itinerary, Contact Globe Travel or phone Irwin C. Harris, 754-2101.

**HOPE'S GLOBE TRAVEL SERVICE**  
Corvallis Professional Center  
5th & Madison Phone 752-2349

**Interest Groups Open To Women**

Special interest groups, open to undergraduate women, have been organized by the women's physical education department.

They are bowling, basketball, gymnastics, Seahorses, and Promenaders.

There are still openings on the bowling team which meets Monday from 6 p.m. to 8 p.m. at the Memorial Union bowling lanes according to Jeannette Masilionis who will be directing the team. The bowling team will compete with teams from other schools, reports Miss Masilionis.

**Hoop Team**

The basketball team meets in WB 112 Thursday from 7 p.m. to 9 p.m. The basketball team will compete with teams from other schools, reports Jean Farr, who will be coaching the team, and will also host the Oregon Collegiate Tournament, Feb. 17.

Gymnastics interest group meets in WB 112 Tuesday and

**Beaver Memo**

**Baha' Club**  
Elder N. Douglas Gulbrandsen, a Mormon minister, will speak to the Oregon State University Baha' Club on Mormonism. Elder Gulbrandsen will speak Sunday, Jan. 21, at 2:30 p.m. in MU 102.

**R & T Council**  
Applications for the Business and Technology Council are due Friday, Jan. 19. All interested business students, especially undergraduates, are urged to apply. Applications are available in the Activity Center or contact Jim Nichols, 753-3553.

**Junior Senior Prom**  
Applications for committee chairman and members are now being taken in the Activity Center. Committees available are Dance and Concert, Decorations, Finance, Hospitality, Programs, Publicity, Queen Selection, Tickets, and Invitations and Chaperones.

A general secretary is also needed. Deadline for applications is 5 p.m. Jan. 22.

**Rec Sports Members Provide Concessions**

Members of Oregon State's Recreational Sports Program have left the gyms, ski slopes, rivers and athletic fields on weekends this year to sell concessions at OSU athletic events.

Under the direction of the Oregon State University Recreational Sports Committee and the Memorial Union Food Service, the Recreational Sports clubs are adding money to their treasury by working as concessionaires at home athletic events.

The individual clubs are paid on a percentage basis of the merchandise sold. These earnings are supplemental to the yearly allocations received from the Recreational Sports Program, and member organizations are not required to participate in the concession program.

Members of the Recreational Sports Program include men's bowling, pistol, rifle, rowing, rugby, skiing, soccer, women's bowling interest group and women's field hockey interest group.

The Recreational Sports Program's concession program began this fall. In past years the concessions were provided by a private company.



**find your place in the sun at RAYTHEON**  
Space & Information Systems Division  
Santa Barbara • California

Beautiful living... a dynamic future await you at Raytheon, one of the world's great diversified corporations with current sales of \$1-billion, stemming from dominance in the electronics field.

Working with eminent scientists, engineers and executives you'll discover for yourself that Raytheon is "where history is made and men make history." Why waste a moment?

Here in Santa Barbara our full efforts are devoted to vital commercial and military applications of our unique electronic know-how. Here, too, we design an extraordinary Full Career Development Program around your talents and aptitudes. And it has every ingredient you could want: creative challenge... practical educational assistance... rapid advancement keyed to personal ability... excellent educational and recreational facilities. An accredited advanced training program is available at Santa Barbara's beautiful seaside campus of the University of California.

**SOME FACTS ABOUT RAYTHEON SANTA BARBARA**

- Sunny, smog-free location 100 miles north of L.A.
- 700 employees with constant projected growth into the 1970's
- Ratio of engineers and scientists to total personnel: 40-60
- Less than 5% turnover rate among technical personnel

OPENINGS ARE AVAILABLE IN THE FOLLOWING DEGREE AREAS  
BSEE/ME/Math/Physics; MSEE/ME/Math/Physics. Graduates, Raytheon's future depends on you...

**CAMPUS INTERVIEWS**  
See your Placement Director for Interviews.

**January 25**

**RAYTHEON**  
EXCELLENCE IN ELECTRONICS  
An Equal Opportunity Employer

**"A Sale On Toupees? Where?"**

And when he buys two—he can keep the extra in his Citizens Bank Safe Deposit Box with his valuables and important papers. It's unusual—but safe. And safe deposit boxes are only \$5.00 per year.

**CITIZENS BANK OF CORVALLIS**  
855 Kings Road Campus  
2nd and Madison Downtown

**Orange Blossom DIAMOND RINGS**

**BONATA ... FROM \$100**

We Give 2 1/2% Green Stamps  
Convenient Terms  
No Interest or Carry Charge

Our 54th Year

**KONICK'S JEWELERS**  
120 S. Third 753-7421

**BONUS Color PHOTOS**

FROM YOUR 126-127-620-120 EXPOSURE ROLL OR 800-6000 NEGATIVES SQUARE SIZES ONLY

**2 FOR THE PRICE OF 1**

a JUMBO print for your album  
a WALLET print for your BONUS

*Pat Justice*

tion  
College

EVER  
HOUSE

AD & FREE  
ESHMENTS

HT (Friday)  
1:00 a.m.

g Ep house  
N. 26th

AD OF  
vls!

ing especially his

Live! • 24591 • The  
ational Lou Rawls  
ever made. Includes  
Monday, Southside  
Rather Drink Muddy  
in' To Chicago Blues.

STEREO

RES  
Campus Store  
Monroe St.

# Undeclared Huskies Eye Matmen's Winning Streak

## Washington Lightweights Worry OSU Boss

By BOB ALLEN  
Assistant Sports Editor

The undefeated Washington Huskies bring their wrestling team to Gill Coliseum tonight to battle the always-strong Oregon State Beavers in one of the nation's top-rated battles.

Coach Jim Smith, in only his second season as head mentor of the Husky fortunes, has developed one of the strongest teams to come out of Seattle in recent years. The purple and gold grapplers have a perfect 5-0 dual meet record against some rugged competition.

**Beavers Undefeated Too**

Their hosts, Oregon State, will be putting its unblemished string of wins on the line in the 7 o'clock match also. Dale Thomas has guided his squad to a 3-0 mark so far this year.

That record may be in jeopardy this evening.

Despite their records both coaches appear optimistic over the meet.

Smith was quoted in a Washington press release as saying that he "doesn't count on his team's winning streak running much longer."

**Huskies "Stronger On Paper"**

Thomas countered with the statement that "they (Washington) look stronger on paper than Portland State did." Oregon State slipped past the Vikings 18-17 two weeks ago.

Comparative facts show the meet to be almost a tossup.

The Huskies stopped Central Washington State, the top team in that state for many years, for the first time in nine seasons in their first match of the year. The Central Washington team then came

back to topple Portland State. That seems to give the Huskies a slight edge.

**Matches Decisive**

But the Beavers have defeated the California Bears 25-15 already this year, and that includes a five point forfeit given the Berkeley squad in the 115 pound division. Comparatively, the Huskies downed the same team only 31-4.

On that basis the Beavers seem to have the edge.

The only other measuring stick is the Washington Invitational which Oregon State won from 16 other teams, including the Huskies who finished second. That was a tournament, however, and has little bearing on tonight's dual battle between the unbeaten.

**Strong Opponents Fall**

Other wins for the Huskies include lopsided victories over the Multnomah Athletic Club of Portland, Fort Lewis, and arch-rival Washington State.

Smith's grapplers stopped the strong Multnomah team 26-15 earlier this year. They polished off Fort Lewis, OSU's opponent tomorrow, 26-8 in a surprising show of strength against a team composed of several former national champions.

Last weekend the Seattle squad topped WSU 32-16 for their first win over the Palouse team since 1964.

**OSU Not Quitting**

The Beavers aren't out of the running yet though. Their 23-4 win over the Huskies will probably not be repeated tonight, however.

OSU showed the type of team strength that has exemplified

them for so many years last weekend.

They effortlessly stopped California Friday night then routed Stanford, a team with two national finishers, the following evening, 33-3.

Pre-meet dope points to a struggle between Washington's strong lightweights and Oregon State's young, but powerful middleweights and heavyweights. Smith admits that his lightweights are his strongest feature and he is high on several of his performers.

**D'Antuono Top 123 Pounder**

In the 123 pound battle the Northern neighbors are expected to start Mike D'Antuono. He will face Beaver senior Murril Davis from Klamath Falls.

One of the feature bouts will be between Washington star Randy Berg and sophomore John Cooluris in the 130 pound division. Berg has been tabbed by Smith as "one of the best on the coast." Cooluris won both of his matches last week, including a 3-0 decision over California junior college champ Shep Bloom.

Jim Moore anchors the Husky attack in the 137 pound class. Moore was second in the Washington Invitational and his coach boasts that "no one can beat Moore."

**Scott Lewis Now 2-1**

The Dalles sophomore Scott Lewis will have his chance tonight. Lewis, like teammate Cooluris, had a successful weekend series with two wins, including a pin.

Oregon State's Steve Woods, one of the Beavers' champions at the Seattle tournament, will

be testing Doug Smith in the 145 pound clash. Smith is listed by his coach as being one of the best on the Husky squad. Woods is undefeated in dual meet action and his string includes a 4-3 win over previously undefeated Steve Warren of California and a "great performance" according to Dale Thomas in his 5-6 tie with last year's national college champion and university runner-up Masaru Yatabe of Portland State.

**Lane Faces Frey**

Another strong Washingtonian is Jon Lane who will tentatively be facing Phil Frey in a 152 pound match.

Husky Ray Wallace is considered another Washington mainstay at the 167 pound class. His opponent will be Jim Vandehy who Wallace edged 3-2 in a tournament match.

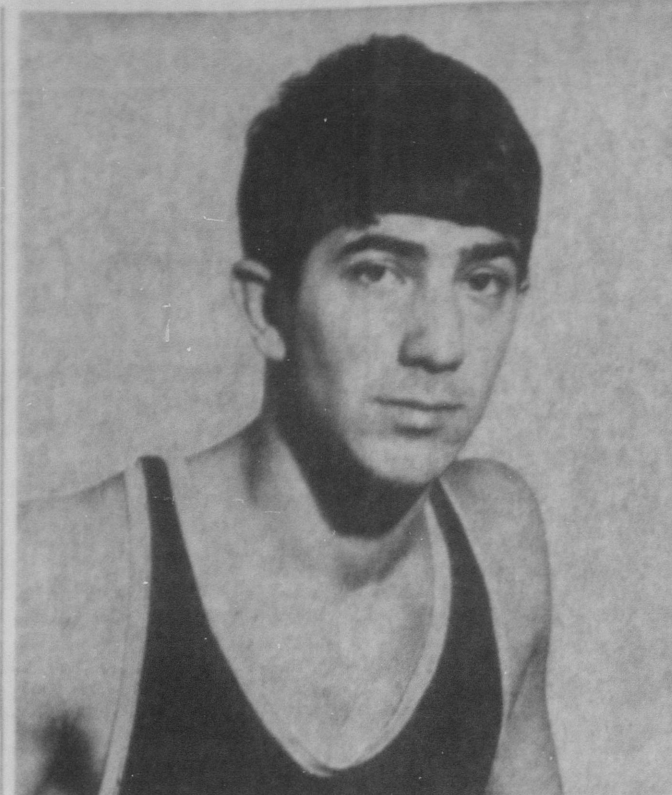
Dale Thomas points out that the Seattle team has a good heavyweight who may test Beaver strong man Jess Lewis.

**Same Lineup For OSU**

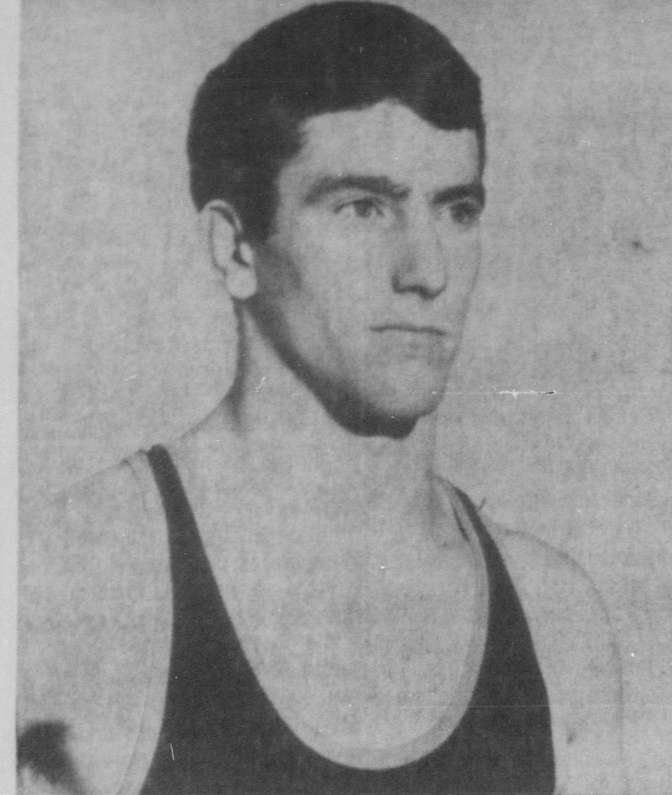
The Orangeman coach will be using the same lineup that has already scored two conference wins.

In addition to those already mentioned, Oregon State hopes will rest on Ken Larsen (115 pounds), captain Jerry Chapin (160 pounds), Jim Blackford (177 pounds), and Bill DeJager (191 pounds).

Whoever wins the Coliseum meeting will become one of the favorites to capture the conference crown that Oregon State has had a strangle hold on for over a decade.



Mike D'Antuono  
Huskies Top 123 Pounder



Jon Lane  
Will Challenge Beaver's Phil Frey

## Grapplers Host Husky Team



Jerry Chapin  
Beaver Captain



Phil Frey, Beaver 152 pounder, pressures his California Washington junior college transfer Jon Lane tonight.  
PHOTO BY GREG BRUNIG

## Harper's Heroes To Pluck Frosh Feathers At Eugene Tomorrow

By BOB ALLEN  
Assistant Sports Editor

The Oregon State Ducks trek to Eugene tomorrow night with their older brothers, the varsity, to face the arch-rival Oregon Frosh in a key dual.

Rook coach Bill Harper called the Frosh, "One of the best teams we'll face this year. They have a real fine squad and good backing from their students."

**Frosh Scores Varsity**

In an early season scrimmage with the Duck varsity the highly-touted Frosh nearly knocked off their older mates.

The Frosh, paced by 6-9 pivot man Stan Love, has all five of its starters in double figures in the scoring race so far.

Love leads the pack with a 22.9 average. He scored 24 in one game this year. Other top scorers include forward Bill Droadak with a 18.1 average, John Green with a 12.9 average, and guards Leonard Jackson and Carlton Slater who both own 11.9 scoring averages.

**Average Near 100**

Steve Heiner's run-and-gun Ducklings have rolled up a fantastic 96.9 point per game average while holding their opponents to a 71.7 average.

Such statistics spell out the reason that the Frosh has a perfect 9-0 record.

Last week they dumped St. Martin's JV 98-83 and then whipped the Washington Frosh 91-76.

**Webber Paces Offense**

Harper's Rooks, more noted for their defense, will be led by 6-6 forward Larry Webber who has been the season-long top point producer with a 16.5 average. Last Monday against the Washington Pups Webber slipped to his season low with only 7 markers. It was the first time that he has failed to score in double figures this year.

Second leading scorer is floor leader Tim Perkins. The former Milwaukee prepster has been averaging 14.1 points a game and has directed the Baby Beavers' attack from his guard position.

**A Consistent Haller Helps**

The only other player in double figures for the season has been Jeff Haller, a 6-6 forward. Haller has an 11.3 ppg and has been a consistent performer for Harper's tall Rooks all season long.

Oregon State will be attempting to snip the Ducklings win streak while adding to their own string.

**WSU Halts Streak**

The Rooks had a five game winning streak broken last Saturday in Pullman when the undefeated Couabes from Washington State halted them 64-44.

In the only action since then, against Washington, they regained the winning form but will be hard pressed to maintain it against the Oregon quint.

The Rooks were originally scheduled to face Trux Oil, an AAU team from Corvallis, tonight in the Coliseum but that contest has been rescheduled for Tuesday night at 8.

**Game Cancelled**

The Rook basketball game scheduled with Trux Oil of Corvallis for tonight has been rescheduled for Tuesday night, January 23, at 8.

**Tickets!**

Tickets for the February 9 UCLA game are still available in the athletic ticket office, according to department officials. The tickets may be picked up from 9 to 11:50 and from 1 to 5. They will be available only till Saturday noon. Tickets must be picked up if students wish to see the game with last year's national champion Bruins.

**GANT SHIRTMAKERS**

**Why A Gant Shirt?**

Because a Gant shirt is more than something to hang a tie on. It's a stimulant to make you feel good, look good throughout the day.

Because a Gant shirt—from its softly flared button-down collar to its trim Hugger body—is tailored with singular precision.

Because the fabrics in Gant shirts have élan in a gentlemanly manner; are exclusive and wear superbly.

This is why we carry a complete selection of Gant shirts. It's also why men of impeccable taste come to us for Gant.

PHIL SMALL'S  
**UNIVERSITY SHOPPE**  
2027 Monroe  
753-4762  
Customer Parking Behind the Store

**LAST CHANCE TO BUY TICKETS! LOU RAWLS. YEAH!**

**IN CONCERT**  
8:00 p.m.  
**SATURDAY**  
Jan. 20th  
Featuring Vocalist: Patience Valentine

Presented by the Sophomore Class

**SOPHOMORE COTILLION**

Adults and Students: \$3, \$2.50, \$2, \$1.50  
on sale at:  
**MU Activity Center**  
The Coachman, Downtown Corvallis

## Beaver Memo

**MU Sing-In**

Applications are now being accepted for membership in the MU Sing-In. All interested persons should leave word in the Activity Center. No experience is necessary.

**Social**

Have you got soul? Come and find out as Wesley and Westminster House present a Soul, Soul, Dancing and Soul music will be featured at 9 p.m. Jan. 20.

**Sunday, Sylvia and Julian**

KVTV-FM, 90.1 will present Sunday, Sylvia and Julian, at 5 p.m. on Sunday, Jan. 21.

**Folk Dancing**

There will be folk dancing from 8 to 12 in MU 108, Friday, Jan. 19.

**Fine Arts Festival**

A chairman is needed for the Fine Arts Festival for Spring Term. Applications are available in the Activity Center. For further information, contact Bobbie Mikkelson, 753-6683.

**Easter Egg Hunt**

Applications are available for General chairman and chairman in charge of judging, finishers, boots and prizes, decorations and eggs for the ARSQU-MU Easter Egg Hunt. Due in Activity Center by Jan. 26 at 5 p.m.

**Homecoming Chairman**

Applications are open for Homecoming General Chairman for 1968 and are due Friday, Jan. 19. An informal discussion with all applicants and members of the Homecoming steering committee will be held Jan. 24 to acquaint the applicants with the tentative plans for the Centennial year.

## Record Numbers Back Intramurals

Approximately 1600 OSU men will compete in intramural basketball as they fill the Men's Gym every Monday through Thursday night from 6 to 11:15 p.m. This year a record 180 teams have entered the round robin tournament.

"The Men's Gym will be used to maximum capacity," said Bill Winkler, director of intramural sports.

Schedules for most sports will be available today.

In bowling, 44 teams have entered the round robin competition. Teams should pay their fees to the MU on the first night of play which will be next week.

Wrestling and table tennis, singles and doubles, will also begin next week. These sports are on a single elimination basis.

## Patronize Your Advertisers

**FUN WORKING IN EUROPE**

**Jobs Abroad Guaranteed**

BRUSSELS: The Int'l Student Information Service, non-profit, today announced that 1,000 GUARANTEED JOBS ABROAD are available to young people 17½ to 40, Year-Round and Summer. The new 34 page JOBS ABROAD magazine is packed with on-the-spot photos, stories and information about your JOB ABROAD. Applications are enclosed. LANGUAGE-CULTURE-FUN-PAY-TRAVEL. For your copy send \$1.00 AIRMAIL to: ISIS, 133 Rue Hotel des Monnaies, Brussels 6, Belgium.

## Beaver Memo

**CT 478**

All seniors planning to enroll in "The Clothing Buyer" CT 478 spring term are required to attend the fashion group seminar in Portland February 3. If you have not already done so, will you please leave your name and address with Leslie Forsberg in the Home Economics office room 112 on or before Friday, Jan. 19 so that the details of the trip can be sent to you.

**JOHN WAYNE**  
**KIRK DOUGLAS**

**"THE WAR WAGON"**  
TECHNICOLOR PANAVISION  
A Universal Picture

**BURT LANCASTER**  
**KIRK DOUGLAS**  
**FREDRIC MARCH**  
**AVA GARDNER**

**SEVEN DAYS IN MAY**  
A Paramount Release

Fri-Sat Showtime 7:15  
Sunday Showtime 5:30  
Sunday Carload \$1.50

**ROCK HUDSON in**  
**TOBRUK**  
TECHNICOLOR

**Coming Sunday**  
Matinee and Evening

**A MAN AND A WOMAN**  
ANDRÉE BAUME JEAN-LOUIS BARRON PIERRE BAROUH

## Varsity Theatre

**Fri.-Sat.-Only**

From the Man Who Made "Charade"

**ULTRA-MOD MYSTERY**

**GREGORY SOPHIA PECK LOREN**

**ARABESQUE**  
ALAN BADEL-KERON MOORE  
TECHNICOLOR - PANAVISION  
A Universal Release

**DEAN MARTIN**  
as **MATT HELM**

**THE AMBUSHERS**  
SENITA BERGER-JANICE RULE-JAMES GREGORY-BOLEYN WOOD

**HEY KIDS!**  
Matinee Sat. 2 p.m. to 4 p.m.  
Children Under 12 35c Others 50c

**STATE SHOWTIME**  
7 p.m. and 9 p.m.

**MATT HELM RIDES AGAIN!**

**THE NIGHT OF THE GRIZZLY**  
TECHNICOLOR

**WHITESIDE THEATRE**

**Fri. & Sat. Showtimes 7:00 & 9:15**

**WARREN BEATTY**  
**FAYE DUNAWAY**  
**BONNIE & CLYDE**  
Written by GARY NEWMAN and ROBERT SWICK. Directed by JOHN DAHLHOFF. Technicolor. From Warner Bros.-Seven Arts.

**They're young... they're in love... and they kill people.**

**STATE SHOWTIME**  
7 p.m. and 9 p.m.

**MATT HELM RIDES AGAIN!**

**DEAN MARTIN**  
as **MATT HELM**

**THE AMBUSHERS**  
SENITA BERGER-JANICE RULE-JAMES GREGORY-BOLEYN WOOD

**HEY KIDS!**  
Matinee Sat. 2 p.m. to 4 p.m.  
Children Under 12 35c Others 50c

**THE NIGHT OF THE GRIZZLY**  
TECHNICOLOR

**Winter Term Women's Week Gets Push**

Women's living groups are planning to participate in the Women's Recreation Association's winter term program must turn in their petitions to the W.R.A. office by noon Friday.

Winter term activities include basketball, table tennis, badminton, living groups and a petition is slated for all activities.

Basketball intramurals scheduled to begin Monday, Jan. 22. Games will be played at 5 p.m. Mondays, Tuesdays and Fridays in the 112 and 118 of the Women's Building. Intramural matches are Kathy Stenfor and Gaddis.

Table tennis action is scheduled for Tuesday and Thursday noon in the Women's Building basement. A singles and doubles tournament is scheduled and women enter both.

Badminton is on tap for Tuesday evenings 6:30 to 8 p.m. in room 112 of the Women's Building. A required program for all women entering the tourney will be held Wednesday evening Jan. 24. It includes doubles entries and 7:00 singles participants.

Women interested in participating in the intramural program should sign up at their living group W.R.A. representative.

**Dad's Tickets**

Reserve tickets for the Washington State game at Dad's Weekend have all been sold out, according to the athletic department. General admission tickets for the game will go on sale Monday at 9 in the ticket office at the Coliseum.

Reserve tickets for all home games except WSU-UCLA remain to be sold.

**Coming Frosh to Open Era**

High school seniors entering Oregon State University freshmen in September, will comprise the first class OSU's second century history.

Oregon State, the oldest supported institution of higher learning in Oregon, is celebrating the 100th anniversary of an academy incorporated as Corvallis College in 1858. On Oct. 27, 1868, the college was designated a permanent institution and renamed the Agricultural College of Oregon.

Enactment of the first Morrill Act in 1862 brought land-grant colleges into existence. Fought against opposition, limited opportunities in traditional classical universities of a century ago, land-grant colleges were designed to provide college education for all who had the ability and the will to learn.

Today, land-grant universities provide higher education for the nation's population, but their role in education is still greater. More than 40 percent of all living Americans are graduates of land-grant institutions.

Stepped in its 100-year tradition, Oregon State University will celebrate its 100th birthday with the annual Convocation Oct. 27, 1968. The convocation, including a processional, will bring campus delegates of colleges, universities, fraternities, societies and other organizations throughout the nation.

Other centennial highlights include a five-month symposium lecture series, beginning February, 1969. The symposium will host representative labor, business, industry, government and other groups which the university has supported through research.

The June, 1969, commencement will recognize university students through a graduating class which was honored as the "Class of the Century."

A special "Class of the Century" student committee working to develop 1968-69 activities around a centennial theme.

**View Planned On Transplant**

The morality of organ transplants and mercy will be discussed in an hour segment of the program over KOAC-TV, Sunday, Jan. 21, at 5:30.

The segment will feature a dialogue between local medical experts, theologians and sociologists, in a panel discussion, expressing a variety of viewpoints.

The filmed report will describe a new medical procedure of death, explain why it is kept alive outside of the body of an experimental mechanical heart vial, and show doctors at St. Vincent Hospital, New York City