



OREGON STATE UNIVERSITY  
CORVALLIS, OREGON 97331

# The Daily Barometer

TUESDAY  
MAY 20, 2014  
VOL. CXXVI, NO. 140

DAILYBAROMETER.COM • 541-737-3191

DAILYBAROMETER @BARONEWS, @BAROSPORTS, @BAROFORUM

## Oregon's gay marriage ban overturned

District Judge Michael McShane overturns gay marriage ban in Oregon

By Lizzy Duffy  
OREGON PUBLIC BROADCASTING

PORTLAND — Same-sex couples across the state are getting married today after a federal judge overturned Oregon's decade-old ban on same-sex marriage.

In a ruling issued Monday, U.S. District Judge Michael McShane wrote: "Because Oregon's marriage laws discriminate on the basis of sexual orientation without a rational relationship to any legitimate government interest, the laws violate the Equal Protection Clause of the Fourteenth Amendment to the United States Constitution."

McShane went on to write: "Despite the fact that these couples present so vividly the characteristics of a loving and supportive relationship, none of these ideals we attribute to marriage are spousal prerequisites under Oregon law. In fact, Oregon recognizes a marriage of love with the same equal eye that it recognizes a marriage of convenience. It affords the same set of rights and privileges to Tristan and Isolde as it affords to a Hollywood celebrity waking up in Las Vegas with a blurry memory, and a ringed finger. It does not, however, afford these very same rights to gay and

See STATE | page 4



LUCY OHLSEN | OREGON PUBLIC BROADCASTING

"Where's the champagne?" Ask the brides at the Melody Ballroom.

7 same-sex couples in county apply Monday as community celebrates, readies for interested couples to apply for marriage certificates

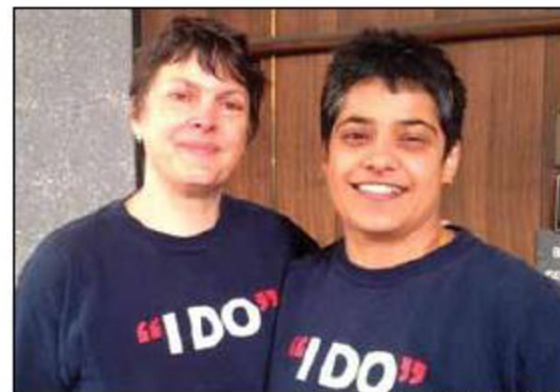
By Tori Hittner  
THE DAILY BAROMETER

Same-sex couples flocked to county courthouses Monday after Oregon District Judge Michael McShane ruled the state's same-sex marriage ban unconstitutional. Benton County perpetuated the trend, with the courthouse receiving seven applications from same-sex couples in one afternoon.

By 1 p.m., just one hour after receiving notice of the ruling, the county's records & licenses office was prepared to process same-sex marriage license applications.

"I was contacted a little after noon by the state registrar of vital statistics," said Benton County clerk James Morales.

See COUNTY | page 4



OREGON PUBLIC BROADCASTING

Laurel Gregory and Shilpi Banerjee are at Multnomah County HQ, waiting to hear the ruling on same-sex marriage.

## Council hears update, testimony on residential parking plan

Urban Services Committee report causes resident concerns for parking

By Emma-Kate Schaaqe  
THE DAILY BAROMETER

Residential parking districts were once again at the forefront of city discussion at the City Council meeting Monday evening.

"We have a real immediate problem that we can't evolve into," said Councilman Bruce Sorte.

The Urban Services Committee gave the council an update on its work over the past few weeks. The committee asked the council for direction for its future meetings.

As it stands, the plan will be implemented in September. The current three residential parking zones will be expanded to seven surrounding the university. Permits will cost \$20 per year for residents and \$100 for employees.

Highly congested areas will be des-

See PARKING | page 3

## Roaches in McNary are an ongoing issue

Cockroaches sighted in McNary Hall light fixtures, bathrooms prompts pest management

By Megan Campbell  
THE DAILY BAROMETER

For the most part, they're dried up, hovering from above, watching people come and go.

Inside the light fixtures, there are one to two dead



COURTESY OF KATE BECHTOLD

Until recently, cockroaches in McNary Hall were isolated to the light fixtures on the first floor.

cockroaches in at least the first four casings immediately entering McNary Hall from its northern front door walking toward the elevator.

Kate Bechtold, a McNary resident since fall 2013, said she and her roommate first noticed them in November, but neither one of them filed a maintenance request until Wednesday.

University Housing & Dining Services facilities will spray the main lobby and the first and fourth-floor kitchen, recycling area and restrooms in McNary at 5:30 a.m. in response to the Wednesday maintenance request.

As a freshman in exercise sports science, Bechtold said she didn't know what to do about the pest problem.

"We put a towel under our door so cockroaches can't come in," said Lauren McMillan, Bechtold's roommate. McMillan and Bechtold said, until recently, they haven't seen the roaches in any other portion of the residence hall, but the first-floor light fixtures.

"They started on the first floor, but are slowly trickling up," Bechtold said.

Floormate Jasmine Copleine, a freshman in public health, found a cockroach in the women's fourth-floor bathroom Wednesday.

"I went to the bathroom, and there was one in the shower," Copleine said. "Then I freaked out and left."

Another floormate, Jerome Robinson, said he has seen between two and three live roaches in the hall.

A junior in mathematics, Robinson likes to get creative when he spots a roach.

"We ushered one outside," Robinson said. "It was raining out. He didn't take his coat."

Another time, Robinson killed the pest, but left a note with its body addressed to the rest of the roach species inhabiting McNary: "We don't like your kind

See ROACHES | page 4

## Ellen DeGeneres to virtually visit Oregon State

DeGeneres will interact with OSU community Wednesday; time, location still unknown

By Kaitlyn Kohlenberg  
THE DAILY BAROMETER

Ellen DeGeneres will visit Oregon State University Wednesday, she will just be doing it virtually. The time and location are still unknown.

"On Wednesday, The Ellen DeGeneres Show is going to be doing a live Twitter event from her studio in Burbank, Calif., with OSU students in Corvallis," said Annie Heck, OSU associate vice president for university marketing & relations.

Heck explained that DeGeneres will interact with students via satellite and Twitter, while Jeannie Klisiewicz, a correspondent for the show, will be live with students in Corvallis.

Over the weekend, rumors flooded the OSU online community after the daytime television host, and long-time actress for both TV and film, posted on Twitter Saturday.

See DEGENERES | page 3



# The Daily Barometer

Newsroom:  
541-737-3191

Business:  
541-737-2233

Memorial Union East 106  
Oregon State University  
Corvallis, OR 97331-1617

Find Us Here...



NEWS TIPS • 541-737-3383

FAX • 541-737-4999

E-MAIL • NEWS TIPS

news@dailybarometer.com

Contact an editor

EDITOR-IN-CHIEF  
WARNER STRAUSSBAUGH  
541-737-3191  
editor@dailybarometer.com

MANAGING and NEWS EDITOR  
MEGAN CAMPBELL  
541-737-3383  
managing@dailybarometer.com

FORUM and A&E EDITOR  
IRENE DRAGE  
forum@dailybarometer.com

SPORTS EDITOR  
ANDREW KILSTROM  
sports@dailybarometer.com

ONLINE EDITOR  
SHELLY LORTS  
webmaster@dailybarometer.com

GRAPHICS EDITOR  
ALYSSA JOHNSON

To place an ad  
call 541-737-2233

BUSINESS MANAGER  
JACK DILLIN  
541-737-6373  
baro.business@oregonstate.edu

AD SALES REPRESENTATIVES  
737-2233

BRIAN POWELL  
db1@oregonstate.edu

LILLY HIGGINS  
db2@oregonstate.edu

KALEB KOHNE  
db3@oregonstate.edu

KYLEE ESPARZA  
db4@oregonstate.edu

BRADLEY FALLON  
db5@oregonstate.edu

JESSICA BARZLER  
db6@oregonstate.edu

CLASSIFIEDS  
541-737-6372

PRODUCTION  
baro.production@oregonstate.edu

The Barometer is published Monday through Friday except holidays and final exam week during the academic school year; weekly during summer term; one issue week prior to fall term in September by the Oregon State University Student Media Committee on behalf of the Associated Students of OSU, at Memorial Union East, OSU, Corvallis, OR 97331-1614.

The Daily Barometer, published for use by OSU students, faculty and staff, is private property. A single copy of The Barometer is free from newsstands. Unauthorized removal of multiple copies will be considered theft and is prosecutable.

Responsibility — The University Student Media Committee is charged with the general supervision of all student publications and broadcast media operated under its authority for the students and staff of Oregon State University on behalf of the Associated Students of OSU.

Formal written complaints about The Daily Barometer may be referred to the committee for investigation and disposition. After hearing all elements involved in a complaint, the committee will report its decision to all parties concerned.

dailybarometer.com

Thursday, May 8

### An impulsive defecation

Someone reported a male had allegedly defecated near the southwest door of Impulse Bar and Grill several times. Video evidence of the crime was provided and a suspect was identified. The 23-year-old male was located and cited for disorderly conduct II and criminal mischief III.

Friday, May 9

### Don't even think about it

Officers allegedly spotted a man with a Fred Meyer shopping cart walking on the 700 block of Kings Boulevard. Corvallis police advised him to return the cart. The 45-year-old man walked a block away and left the cart. Police re-contacted him and he was cited for theft II. He was then



Compiled from the Department of Public Safety, Oregon State Police and Corvallis Police

followed until he returned the cart.

Saturday, May 10

### You forgot something

Corvallis police reported to the 300 block of Conifer Drive for a trespass complaint. The homeowners awoke to a male allegedly standing in their living room. When officers arrived, the male had left, but his truck was still parked outside with the keys lying near the driver's side

door. The 30-year-old male was found allegedly intoxicated at a nearby house and apologized for entering the wrong house. He was cited for criminal trespass I and criminal mischief II.

Monday, May 12

### Just a bad day

A man flagged down Corvallis police near the intersection of Fourth Street and Western Boulevard. The man showed officers to his camp near the bridge at Philomath Boulevard and Third Street. He reported an unknown man threw rocks at him, his wife and their dog. He then stole the victim's bike and took off. Dennis Becker, 27, was found west of the location and arrested because he matched the description. He was charged with nine different offenses including

## FedEx ships almost anything overnight, for a price

By Ted Shorack  
DAILY ASTORIAN  
dailyastorian.com

ASTORIA — About once a week, Robin Knoll says someone is shipping crab or some type of seafood in a cooler wrapped in duct tape to family or friends across the country.

At the FedEx ShipCenter he runs in Gearhart, Knoll also has 12 to 16 boxes of blackberries that go out every week to insect zoos.

A package can be dropped off for the Express division and be delivered in Miami, Fla., the next morning. It just might cost close to \$100.

"It depends on how much you want to pay and how fast you want it," said Knoll.

Knoll operates the ShipCenter for FedEx as a franchisee. Every day, seven FedEx vehicles deliver and pick up packages in Clatsop County. Delivery drivers own their routes and service Astoria, Warrenton and Seaside.

FedEx is the second largest package delivery company in the world after the United

Parcel Service. While UPS has a facility in Warrenton it uses to sort packages for Clatsop County, FedEx operates a northwest hub in Troutdale.

The elaborate spider-web of conveyor belts at the 447,000-square-foot facility sorts packages from all around the country for delivery in Oregon, Washington and parts of California and Idaho.

The hub has about 200 load and unload doors and 10 scan tunnels directing packages to certain loading areas.

"It's finding out where the package is from. It's finding out where it's going. It's taking the dimensions; You name it, it's doing a lot," said Robert Brigham, senior hub manager.

"There are two human interactions with every package in this building," said Ron Cazares, a senior manager. The facility can process up to 22,500 packages an hour depending on volume, day of the week and time of the year.

Cazares, who has worked for the company for 16 years and started out as a package

handler, said a lot of the bulk deliveries coming to Astoria go to Costco in Warrenton. "It's keeping him busy," said Cazares of the contracted driver.

Trailers come in to the hub from around the country, as far away as New Jersey and Connecticut in the northeast and Florida and the southeastern states. And the company can ship just about anything, although there are some weight limitations.

There are about 30 hubs in the FedEx Ground network. Most ground deliveries are business-to-business shipping. Home delivery packages are processed and taken to another facility in Portland to be picked up.

While all the ground packages headed for Clatsop County go through its Northwest hub, the company offers Express delivery to its customers as well.

The costs depend on the weight and size of the package. "Most of the Express is paperwork that needs to get some place," said Knoll, for example, title work, visa applications or

loan papers.

Knoll is a drop-off point for people, but he also gets a cut of the shipping costs. The Express, or overnight packages, get picked up at 1:45 p.m., are brought to Astoria where they are put on trucks to be taken to Portland.

"That's what FedEx is famous for — their overnight service," Knoll said.

The biggest package Knoll can send is 165 square inches. A Smartpost goes through FedEx but is delivered ultimately by the Post Office, which contracts with FedEx to transport.

For international shipping, Knoll says FedEx Express has better tracking systems than the Postal Service.

Knoll ships eBay items out of the adjoining space and had been doing it through UPS before getting the ShipCenter, which he vied for with five other contenders.

"Within two months after having the FedEx in here and comparing rates, I just dropped UPS totally," Knoll said.

## 2 sued over shoplift pursuit, now face \$4.1 million lawsuit

By Jeff Wright  
THE REGISTER-GUARD

EUGENE — Two employees who believed they were tracking down a shoplifter in south Eugene now find themselves as defendants in a \$4.1 million lawsuit that alleges they stopped and assaulted an innocent bystander.

The two workers' employers, Safeway Inc. and Columbia Distributing, also are listed as defendants. Representatives from Safeway and Columbia did not respond to requests for comment on the suit.

The lawsuit was filed this month in Lane County Circuit Court by Caleb Tucker, who says he was in Tugman Park walking with some high school friends in May 2012 when he was tackled and injured by the Safeway worker, Dontee Norman-Prevost.

Norman-Prevost was working at the Safeway store at 350 E. 40th Ave. on May

18, 2012, and Joshua York, an employee for Columbia Distributing, was stocking beer at the store on that date, the suit alleges.

York saw young individuals stealing beer from the shelves and chased them outside to the parking lot, where he alerted Norman-Prevost about the shoplifting, the suit alleges.

Norman-Prevost and York jumped into York's Jeep to pursue the shoplifters and to recover their employers' property, the suit says. Having lost sight of the shoplifters, York drove to Tugman Park about a half-mile away in hopes of finding them, the suit says.

York drove his vehicle into the park via a pedestrian/bicycle path and spotted Tucker and his friends there. York drove his vehicle rapidly toward the group, causing them to panic and flee in different directions, the lawsuit says.

Norman-Prevost promptly exited the

Jeep, shouted at the youths and ran after Tucker, the lawsuit says. Norman-Prevost then tackled Tucker and ripped his backpack from his body, searching to see if it contained stolen merchandise, which it did not, according to the lawsuit.

As a result of the incident, Tucker has suffered a recurrent dislocation of his left shoulder; injuries to his left knee and elbow; aggravation of a pre-existing psoriatic arthritis condition; aggravation to his immune system and damage to his liver; mental and emotional anxiety; and interference with usual everyday activities, the lawsuit says.

The lawsuit seeks damages of up to \$2 million for those injuries, as well as \$17,300 for medical expenses incurred; \$50,000 for medical expenses anticipated; and \$2.1 million for impairment of lifetime earning capacity.

## UO police issue alert on 2 assault reports that occurred in past 10 days

By Jeff Wright  
THE REGISTER-GUARD

EUGENE — The University of Oregon Police Department early Sunday emailed a campus crime alert to students and faculty about two recent incidents near campus involving alleged felony crimes.

In one incident, a report alleged that a female UO student was drugged at the Delta Tau Delta fraternity at 1886 University St. on May 10. Giving someone a drug to disable the person is aggravated assault, a felony crime, the department noted in its email.

In a separate incident, the university learned that a woman not affiliated with the UO was allegedly sexually

assaulted at an unknown location either late Friday evening or early Saturday morning. The woman was found disoriented on the south side of East 18th Avenue near University Street later that morning, the email said.

Although the first incident occurred about a week before the second, UO Police Department spokesman Kelly McIver on Sunday said the department was not made aware of either incident until Saturday night.

"We learned about the events around the same time, so it made sense to include both of them in a single alert, even though there is no expectation that the two are con-

nected," McIver said.

McIver said the second incident was initially reported by an acquaintance of the victim, and was not received as a formal law enforcement report. University police learned about it from, among others, the UO Student Affairs Division, which provides resources and referrals to crime victims. Student Affairs assisted even though the victim was not believed to be a UO student, McIver said.

No suspects have been identified in either incident, and the cases are unresolved.

The UO Police Department asked that anyone with information about on-campus or UO-affiliated incidents call them at 541-346-2919, or call

city of Eugene police at 541-682-5111 for incidents believed to have occurred off-campus.

Updates regarding the incidents, when and if available, will be posted at police.uoregon.edu, the department said.

The campus crime alert also offers safety tips to students, suggesting, for example, that they look out for the well-being of friends who may be incapacitated. The alert also lists resources available to crime survivors.

The university has been criticized by some for not issuing a crime alert after receiving a sexual assault report involving three UO basketball players in March.

# Calendar

Tuesday, May 20

### Events

**Vegans and Vegetarians @ OSU,** 10am-4pm, West side of MU Quad parking lot. Get paid to watch a 4 min. video!  
**Spring Creek Project for Ideas, Nature, and the Written Word,** 7-8pm, ILCC 155. An evening of art, photography, film, poetry, and prose in celebration of biodiversity on campus.

Wednesday, May 21

### Meetings

**College Republicans,** 7pm, Gilkey 113. Come join us for discussion on current events in the state and nation.

### Events

**Vegans and Vegetarians @ OSU,** 10am-4pm, West side of MU Quad parking lot. Get paid to watch a 4 min. video!  
**International Programs & Department of Fisheries and Wildlife,** 6-8pm, 032 Nash Hall. Study Abroad in Antarctica! An information session about an upcoming study abroad program to Antarctica. Refreshments will be provided.

Thursday, May 22

### Events

**International Students of OSU,** 5pm, International Resource Center in the MU Cultural Exposition. An exposition of culture through songs, poems, cultural stories and presentations of cultural items.

**Active Minds,** 8am-4pm, MU Quad. Join Active Minds in honoring those who were taken by suicide. Active Minds will lay 1,100 daisies down in the MU Quad to honor the 1,100 students who commit suicide across college campuses each year.

**Campus Recycling,** 6-8pm, 644 SW 13th Street. May Repair Fair - Bring your broken items and questions; receive free repairs.

**Recreational Sports,** 11am-Noon, Dixon Rec Center Conference Room. Recreational Sports Board Meeting.

Friday, May 23

### Meetings

**OSU Chess Club,** 4-6pm, MU Commons. Come play with us and learn more about this classic game. All skill levels welcome.

Monday, May 26

MEMORIAL DAY HOLIDAY

Wednesday, May 28

### Meetings

**College Republicans,** 7pm, Gilkey 113. Come join us for discussion on current events in the state and nation.  
**W7OSU,** 5pm, Snell 229. OSU Amateur Radio Club meeting.

Friday, May 30

### Meetings

**OSU Chess Club,** 4-6pm, MU Commons. Come play with us and learn more about this classic game. All skill levels welcome.

### Volunteers

**Center for Civic Engagement,** 2-4:30, 3-5:30, check-in begins at 1:30pm in Dixon lower courts. Choose from more than six different service projects. Pre-registration is required. You can register online.

Wednesday, June 4

### Meetings

**College Republicans,** 7pm, Gilkey 113. Come join us for discussion on current events in the state and nation.

Friday, June 6

### Meetings

**OSU Chess Club,** 4-6pm, MU Commons. Come play with us and learn more about this classic game. All skill levels welcome.

## 20 percent of Oregon voters have returned their ballots

By Sergio Cisneros

OREGON PUBLIC BROADCASTING

PORTLAND — The latest figures show that nearly 20 percent of Oregon voters have returned their ballots for Tuesday's election. State officials say a significant increase in ballot returns would be needed to stick with historic trends.

More than two million Oregonians are eligible to vote in the May primary, but only about 420,000 ballots have been returned so far. That's according to online data from the Secretary of State's Office.

Voters have until 8 p.m. Tuesday to turn in their ballots and have them count for this year's primary.



# Heated Wehby-Conger Senate race nears finale

KTVZ

**BEND** — After months of campaigning, on Tuesday the race between Jason Conger from Bend and Monica Wehby from Portland for the GOP nomination for U.S. Senate will come to a close.

The heated race has captured national attention and has been full of scandals of late. First there was the Super PAC incident. One of the super PACs running anti-Conger ads was financially supported by none other than Wehby's ex-boyfriend, Andrew Miller.

Weeks later that name appeared again, this time Wehby was accused of stalking Miller. Then the official 911 tape surfaced.

"She's very, very upset and angry," Miller told 911 at the time. "She's been coming to my work place. She's been phoning inappropriately to my employees."

And then Wehby dodged questions and ran through a kitchen to hide from reporters after last Friday's City Club debate in Portland.

In the polls however, Wehby leads Conger. She also has a big lead on campaign funding. Wehby has raised \$1.2 million since she announced her campaign, while Conger has only raised \$340,000.

According to NewsChannel 21 political

analyst Jeff Eager, Conger's biggest problem in this election: his votes for Cover Oregon. "It's the No. 1 issue for many Republican voters," Eager said Monday.

Republicans are hoping to snatch a Senate seat in the traditionally "blue" Oregon this fall, largely as a result of the Cover Oregon mess.

Conger voted in favor of Cover Oregon. He qualified his decision later, saying he wanted to a state run-exchange instead of the federal one.

"When you're running for office, especially in a high-profile Senate primary, you definitely don't want to have to explain your vote," Eager said.

Here is where the candidates stand on the issues:

Both Conger and Wehby oppose stricter gun control laws.

Conger is against abortion, except in cases of rape or incest. Wehby said she opposes abortion personally but believes the ultimate decision is between a woman and her family, not the federal government.

Wehby also said she has no problem with gay marriage, while Conger believes marriage is between a man and a woman.

## DEGENERES

Continued from page 1

"I hear Oregon is beautiful this time of year," DeGeneres tweeted. "I also hear that something fun is gonna happen at @OregonStateUniv on Weds. Now you heard it, too."

The tweet sent the OSU community buzzing as students tried to determine fact from fiction. It wasn't until Monday that clarification came from both DeGeneres' Twitter account and the Oregon State University Facebook page.

"This Wednesday, @OregonStateUniv is the place to be," DeGeneres wrote on her Twitter. "But you won't know what's going down unless you're following my tweets."

OSU administration revealed a few more details, explaining that DeGeneres will not be visiting campus, but there will be opportunities for student interaction with her.

"The (Ellen) DeGeneres Show kind of likes this mystery around everything happening," said Kent Sumner, the assistant director of Memorial Union marketing & assessment.

**Kathlyn Kohlenberg**  
Campus reporter  
managing@dailybarometer.com



**It's Graduation Party Time at Chintimini Senior & Community Center at Chintimini Park!**  
Affordable indoor and outdoor spaces still available for rent for Graduation Day

- Located just five minutes from OSU
- Alcohol service and BBQ grilling allowed (with permit)
- Indoor rooms include tables and chairs
- Kitchen available on-site
- Sand volleyball courts and baseball fields available to rent too!

Call (541) 766-6959 now to make your reservation.

**Chintimini Senior & Community Center at Chintimini Park**  
2601 NW Tyler Ave., Corvallis OR 97330  
www.corvallisoregon.gov/rentchintimini

# VERSIMM

## Art and Literary Magazine

# CONTRIBUTOR SHOWCASE

May 22 @ 4pm  
in the MU Ballroom

## PARKING

Continued from page 1

igned as "hot-spots" in which only permit parking will be allowed. Less congested areas will have some spaces of free, two-hour parking.

The plan raised concerns for councilors regarding equitable permit allocation for different residents and neighborhoods.

"I don't think the resident-only permits are the solution," Sorte said.

After months of deliberation, the Urban Services Committee reached the stage of fine-tuning the enforcements and logistics in order to bring the final plan to City Council for an eventual vote.

"You have to find a way to make the plan work," said Councilman Roen Hogg. "You have to have a plan that can be enforced ... to prevent abuse and discourage people from parking illegally."

The variety of issues raised over the past

months have not brought a clear solution at this point, and the committee has not yet come forward with a finalized solution that will please the most people, parkers and residents as possible.

"The transition from where we are now to where we are going to be at the end of 2014 is going to be a bumpy one," said Councilman Dan Brown.

Many residents testified with issues against the proposed plan, including boundary limits and permit allocations.

"Our neighborhood will become the new hot parking spot for commuters," said Corvallis resident Deb Kadas.

She asked for an expansion of the red zone in the A district to prevent overflow parking near her house on 31st Street and Jackson Street.

"I do agree that you are going to be hit harder by this than other places," said Councilman Mike Beilstien.

However, Beilstien wasn't sure their neighborhood would meet the criteria

of high parking volume to merit this expanded boundary line.

All that testified were concerned with how these parking districts would affect the quality of life for residents.

"The reason for doing this is to benefit the residents near the university," said resident Ed Miller. "I think the university won too much in this negotiation."

Resident Paul Cauthorn said he would rather keep the system as is instead of implementing the proposed system.

"What has been created is not aiding livability, its hurting livability," Cauthorn said.

Councilors suggested these residents bring their concerns to the Urban Services Committee meeting Tuesday during which the committee will be further discussing the potential plan. The final plan will come to the City Council for approval at the June 2 meeting.

**Emma-Kate Schaeke**  
City reporter  
managing@dailybarometer.com

## Classifieds

### Help Wanted

**STUDENTPAYOUTS.COM** Paid survey tasks needed in Corvallis. 100% Free to join. Click on Surveys.

### Summer Employment

**EQUIPMENT OPERATORS NEEDED** for summer employment on hay farm. Experience preferred. Corvallis/ Monmouth area, call evenings or leave message. (503)931-3293

**The Daily Barometer**  
**CLASSIFIED ADS are now ON-LINE!**  
To place an online and/or print classified ad, go to [dailybarometer.campusave.com](http://dailybarometer.campusave.com)  
Online Rates: **FREE** to students, staff & faculty with [ondl.orst.edu](mailto:ondl.orst.edu) email  
\$25 per ad per month  
No refunds will be issued.  
Print Rates:  
15 words or less, per day - \$3.75  
Each additional word, per day - 25¢  
10 Days - 25% off • 20 Days - 50% off

### Summer Employment

**BEAVS Illustrated Magazine Ad Sales**  
Motivated, driven marketing professional? FT & Intern. BEAVSillustrated.com. Resumes by May 22 to raean@beavsillustrated.com

### Services

**PREGNANT?** Free pregnancy test. Information on options. Non-pressured. Confidential. Options Pregnancy Resource Center. Corvallis 541-757-9645. Albany 541-924-0166. [www.possiblypregnant.org](http://www.possiblypregnant.org)

**TUTORING:** English language skills. Individuals/groups. Editing: Dissertations, theses, publications, term papers. Experienced retired professor. 541-740-3707

### Health & Fitness

**OSU GUYS!** Get answers to questions you have always had and get paid for it! Attend a free MARS appointment and receive a \$20 gift certificate to Fred Meyer. Talk 1:1 with a MARS peer educator about sexual health and relationships. All appointments are confidential. To schedule call OSU Student Health Services at 541-737-2775. [studenthealth.oregonstate.edu/mars](http://studenthealth.oregonstate.edu/mars)

### Lost & Found

**\$100 REWARD.** Lost Porsche key - Goss Stadium East Parking-Waldo. 812-219-3631. 541-737-2451

### For Rent

**REMODELED 6 BEDROOM DIRECTLY ACROSS STREET FROM CAMPUS** new kitchen, new bathroom, hardwood floors, new wood stove, large private yard with patio. 503-931-7021

**FREE SUMMER RENT** - To store your belongings if you reserve an apartment for the fall now. Call for details, 541-754-0040. Fillmore Inn Apartments. [www.fillmoreinn.com](http://www.fillmoreinn.com)

**NOW ACCEPTING FALL RESERVATIONS!** Studios \$450 Furnished or unfurnished. Close to OSU. Fillmore Inn Apartments, 760 NW 21st St. Call 541-754-0040. [www.fillmoreinn.com](http://www.fillmoreinn.com)

**NEWLY REMODELED HISTORIC HOUSE** 5 plus bedrooms. 1/2 block to campus. Large rooms. Lots of common space. New wood stove. Private backyard space. 503-931-7021.

### For Rent

**HOUSES AND TOWNHOUSES** for next school year. Walk to class. [www.pprnw.com](http://www.pprnw.com)

**MINI STORAGE STUDENT SPECIAL** Pay for three get one month free when paid in advance. Valid thru June 15th. Busy Bee Mini Storage 541-928-0064.

**Buyer Beware**  
The Oregon State University Daily Barometer assumes no liability for ad content or response.  
Ads that appear too good to be true, probably are.  
**Respond at your own risk.**



**Create and solve your Sudoku puzzles for FREE.**  
Play Sudoku and win prizes at: **PRIZESUDOKU.COM**  
The Sudoku Source of the "Daily Barometer"

**WOODSTOCK'S PIZZA PARLOR**



**541-752-5151**  
1045 NW Kings Blvd.  
[www.woodstocks.com](http://www.woodstocks.com)

**Easy**

2				9	6	5
3	6	1		7		
	4		6	2	3	9
4						
	2	7		5	3	8
						4
7	8		5	1		9
		9		7	6	1
6	1		2			8

© Puzzles provided by [sudoku.com](http://sudoku.com)

**To play:** Complete the grid so that every row, column and every 3x3 box contains the digits 1 to 9. There is no guessing or math involved, just use logic to solve.

**Very Easy**

8	9	4	5	1	8	3	7	2
8	3	1	9	7	2	5	4	6
5	7	2	6	3	4	9	1	8
1	8	7	3	9	5	6	2	4
4	5	6	7	2	1	8	9	3
3	2	9	8	4	6	1	5	7
9	4	3	1	8	7	2	6	5
7	1	5	2	6	3	4	8	9
2	6	8	4	5	9	7	3	1

Yesterday's Solution

**STUDENT SPECIAL**  
Pay for 3 months storage rental, get **50% OFF** the 4th month!  
1 coupon per customer. Not valid with any other offer. Expires 6/30/14

**STOR HAUS** **541-752-4303**  
505 Buchanan Corvallis  
Across from U-Haul between Power Auto & Wilson Ford  
[www.nwselfstorage.com](http://www.nwselfstorage.com)



**OREGON STATE UNIVERSITY**  
**DKMS**  
bone marrow drive

**MAY 20th + 21st**  
**MU QUAD**

save a life...  
one swab at a time

REGISTER AS A BONE MARROW DONOR.  
YOU COULD BE THE CURE.





# CORVALLIS-OSU SYMPHONY ORCHESTRA

## Mahler's Sixth

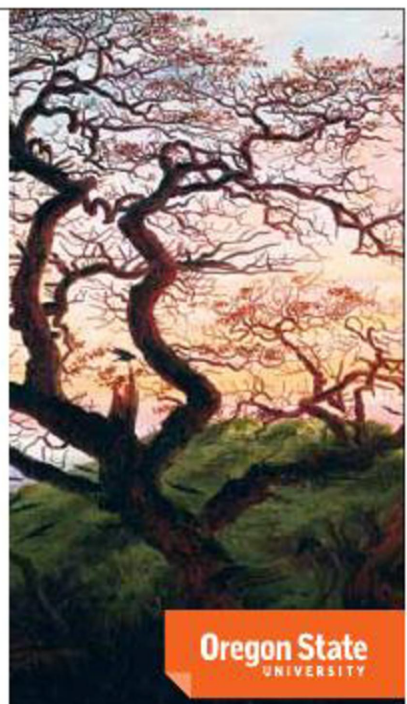
TUESDAY, MAY 20, 8:00 PM

LaSells Stewart Center

**Gustav Mahler:** Symphony No. 6 in A minor  
*Marlan Carlson, conductor*

**RESERVED TICKETS:**  
\$18, \$25, \$30 in advance  
\$20, \$27, \$32 at the door  
College students free with ID  
www.COSUsymphony.org  
541-752-2361

**GENERAL ADMISSION TICKETS:**  
\$18 in advance  
\$20 at the door  
Grass Roots Books & Music  
Gracewinds Music  
CAFA discounts apply



### COUNTY

Continued from page 1

"I previously worked with our software vendor before the ruling to be prepared just in case this took place. Now that it has, we contacted our software vendor and asked them to essentially toggle the system to be able to handle the new forms."

Morales and his office submitted the new forms and software changes to the state registrar's office at the same time, enabling the records & licenses office to produce a quick turnaround.

The Oregon State community, too, marked the historic decision and date. Excited students celebrated the ruling at an impromptu garden party Monday evening, which the Pride Center hosted.

Office assistant Katie Wicks said the center received quite a bit of traffic that afternoon,

with some visitors so happy they could barely speak. Wicks noted that while not every person who stopped by was so enthused, the ruling is still a large milestone for the LGBTQ community. For many students at OSU, marriage is a prospect relegated to the distant future.

Those couples interested in marriage, however, may apply for their licenses at the Benton County Courthouse. Both individuals must be present and prepared with proper identification and the \$52 processing fee. The entire process takes roughly 20 minutes, according to Morales.

Marriage licenses officially take effect three days after their issue date and remain valid for 60 days, during which couples are required to have a ceremony in Oregon.

"There are ways to have the waiting period waived ... but they have to be extraordinary circumstances," said

Rick Osborn, Benton County's public information officer.

Further information regarding the licensing process can be found on the Benton County records & licenses website.

"There were seven same-sex couples who applied (Monday)," Osborn said, "but I wouldn't be surprised if we had even more (Tuesday)."

Ten couples in total applied for their marriage licenses by 5 p.m. Monday at the Benton County Courthouse.

Though the court decision may be historic, same-sex couples will receive the same treatment as heterosexual couples when applying for marriage licenses within the Benton County legal system.

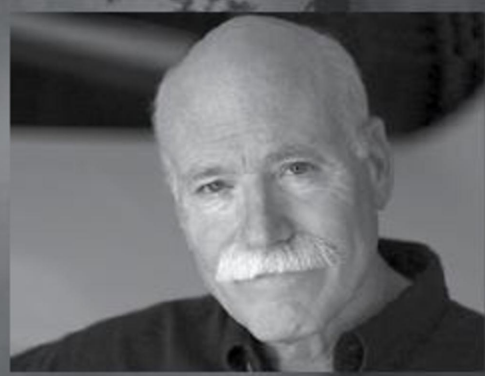
"We will apply the same standard that's always been applied to any license that we've issued," Morales said.

**Tori Hittner**  
Higher education reporter  
managing@dailybarometer.com

### OREGON STATE UNIVERSITY HONORS

# Tobias Wolff

Recipient of the Stone Award for Lifetime Literary Achievement



**THURSDAY  
MAY 22  
7:30 P.M.**

CH2M HILL Alumni Center

FREE AND OPEN TO THE PUBLIC

Q&A, reception and book signing to follow.

The \$20,000 Stone Award — one of the largest given by an American university for lifetime literary achievement — was established in 2011 by a generous gift from Vicki and Patrick Stone '74. The Stones established the prize to spotlight Oregon State's Master of Fine Arts in Creative Writing, a program known for mentoring students, building community and reaching out to underserved populations.

For more information: oregonstate.edu/stoneaward  
Accommodations for disabilities may be made by calling 541-737-0724.



### STATE

Continued from page 1

lesbian couples who wish to marry within the confines of our geographic borders."

The decision comes after four same-sex couples challenged Ballot Measure 36, which amended the Oregon Constitution in 2004 to say "only a marriage between one man and one woman shall be valid or legally recognized as marriage."

Attorney General Ellen Rosenblum said she would not defend the ban in February, leaving the ban undefended until D.C.-based National Organization for Marriage requested to intervene in the matter in April.

"As a membership organization, we speak on behalf of our members, including a County Clerk in the state, several professionals in the wedding industry, and voters" NOM President Brian S. Brown wrote in a statement. "All of these individuals have a particularized inter-

est in the outcome of the litigation, yet their interests are not being represented."

McShane permitted the group to speak on behalf of its Oregon members in May. McShane later denied their request, saying "This is an Oregon case; it will stay in Oregon."

Earlier, NOM filed a stay request with the Ninth Circuit Court of Appeals, which was later denied.

As this was all happening, same-sex couples and supporters gathered in Portland, Eugene and elsewhere across the state in an anticipation of the ruling. Counties statewide are prepared to issue the new marriage license forms to same-sex couples. Couples may request to waive the state's three-day wait period following the issue of a marriage license.

"We'll treat it just like a regular marriage license," Malheur County Clerk Deborah DeLong said.

"We're all ready," Tillamook County Clerk Tassi O'Neil said just before the ruling. "We're prepared to follow the law."



MEGAN CAMPBELL | THE DAILY BAROMETER

Cockroaches on the first floor in McNary Hall are mostly contained within the light fixtures since November, residents said.

### ROACHES

Continued from page 1

around here."

Neither Coptine nor Robinson had filed a maintenance request with UHDS.

And while the fourth-floor residents hadn't officially filed a maintenance request, they said they expressed concern with their resident assistant about the matter. The RA declined to comment.

The pest problem on the east side of campus is an ongoing issue, said Jennifer Vina, UHDS associate director for marketing & communications. But, until Bechtold's post on the "Things Overheard at OSU" Facebook stream Wednesday, UHDS was unaware of the issue.

"We don't want students living with roaches," Vina said. "That's not acceptable."

Since Wednesday, UHDS has posted a message on its webpage responding to the Facebook post. It thanked the community for bringing this issue forward and let residents know the issue is being handled.

Previously, UHDS facilities sprayed McNary restrooms and McNary Dining facilities for roach abatement March 27.

It sprayed the McNary lobby for roach abatement April 29, and finally inspected the

McNary basement for pests and sprayed for roach abatement.

There was a spraying planned the weekend of March 22, but a planned power outage interrupted the pest-management schedule.

The previous three sprayings were in response to cockroach reports, according to the UHDS message.

It can take up to five applications before spraying for pests is effective, Vina said. The spray is applied to the baseboards and corners of an area.

"The application stays low to the ground," Vina said.

It takes approximately 20 minutes for it to dry. Residents are urged to stay clear of these areas until the spray has dried.

Vina expressed the need for students to use MyUHDS, OSU student's online portal, which allows students to file maintenance requests, and other resources, like reporting issues to RAs and resident directors.

"We want to know about situations so we can help," Vina said. "It's not a standard any of us (within UHDS) thought were acceptable."

**Megan Campbell**  
Managing and news editor  
managing@dailybarometer.com

## RECREATIONAL SPORTS CONGRATULATIONS GRADUATES!

- |                  |                   |                   |                   |
|------------------|-------------------|-------------------|-------------------|
| Kyle Alexander   | Anya Crea Vance   | Lillian Kansaku   | Daniel Price      |
| Kaley Allison    | Dana Deharpport   | Ashley Kastner    | Devin Redmond     |
| Kristen Anderson | Jane DeMoss       | Darian Kauffman   | Holly Reeves      |
| Adam Arner       | Alden Durant      | Natalie Krieg     | Audrey Rhoades    |
| Kirsten Bachmann | Rachel Erickson   | Jayna Lack        | Todd Richards     |
| Braden Balocan   | Casey Evans       | Jay Lewis         | Sarah Rim         |
| Olivia Barker    | Damien Evans      | Kelsey Longrie    | Kim Rubey         |
| Lindsay Barnum   | Sarah Finnerty    | Brooke Luchau     | Karina Rusetskiy  |
| Karissa Beatty   | Taylor Friesen    | Colleen Manning   | Tom Sanderson     |
| Kristin Beem     | Monica Garcia     | Kohl Marks        | Marks Schroeder   |
| Grant Beehler    | Natalie Gilchrist | Erin Mason        | Audrey Shipley    |
| Keely Bertak     | Olivia Girod      | Ryan Masuno       | Becca Smith       |
| Dalton Bixby     | Stormy Given      | Emily Monroe      | Charlie Stager    |
| Karl Britsch     | Chris Graff       | Camille Moody     | Kyrie Stevens     |
| Christina Blake  | Ashley Gray       | Todd Moore        | Katlyn Taylor     |
| Carli Brennick   | Riley Hickman     | Kyli Mosher       | Douglas Thalacker |
| Jackie Brown     | Tram Hoang        | Ricky Navarrete   | Ross Thoresen     |
| Charles Burdick  | Ann Huynh         | Shareef Noor      | Kayla Thorsness   |
| Bethany Cameron  | Zachary Jabin     | Kaitlyn Nordtvedt | Shea Wetherell    |
| Caitlyn Clark    | Matt Johnson      | Ish Osorio        | Kai White         |
| Katie Clark      | Jennifer Johnston | Liza Paustenbaugh | Katherine Wong    |
| Garrett Clay     | Cody Jordan       | Julie Phan        | Jun Yuan          |
| Lisa Corley      | Kevin Jung        | Mike Pharr        |                   |
| George Craig     |                   | Dae Powell        |                   |

Thank you for your contributions to Recreational Sports!

Student Recognition Banquet | Tuesday, May 20 | 6pm-8pm @ MU Lounge  
RSVP to Dani.Warren@oregonstate.edu



oregonstate.edu/recsports | Disability accommodations call Kari Miller, 541-737-7235





Beaver Tweet of the Day  
"I do love Ellen. Can't wait!"  
@ebumg Obum Gwacham



COURTESY OF UNIVERSITY OF MONTANA ATHLETICS

New Oregon State head coach Wayne Tinkle coaches during a Montana Grizzlies' game last season.

## OSU names Tinkle as new basketball coach

De Carolis names former Montana head coach Wayne Tinkle new Oregon State men's basketball head coach

THE DAILY BAROMETER

Oregon State Athletic Director Bob De Carolis announced Monday that Wayne Tinkle will be the new head coach of the Oregon State men's basketball team.

Tinkle, 48, was the head coach at Montana for eight seasons, winning 158 games in the process. He led the Grizzlies to Big Sky Conference regular-season titles in 2010, 2012 and 2013 and coached his team to three NCAA Tournament appearances.

"Today, with the hiring of Coach Wayne Tinkle, Oregon State University begins a new era in Beaver men's basketball of regularly competing within the top echelon of the Pac-12 for the conference championship and for postseason NCAA competition," De Carolis said

in a press release Monday.

Tinkle was named the Big Sky Coach of the Year after the 2011-12 and 2012-13 seasons.

"The more I went through the process, the more recommendations I received about Coach Tinkle," De Carolis said. "I met with Coach Tinkle for several hours last week and came away very impressed with him. His success on the basketball court as a coach and player is well documented, but even more so, I was impressed with his demeanor, family and philosophy. I think he is a perfect fit for our basketball program, Oregon State University, the community and this state."

Tinkle takes over as OSU's head coach after Craig Robinson was fired May 5. Robinson led the Beavers to a 16-16 record in 2013-14 and 8-10 record in Pac-12.

The Daily Barometer

On Twitter @barosports  
sports@dailybarometer.com

## Last Civil War of season

Oregon State baseball heads to Eugene for 5th matchup with Ducks this year, has won all 4 meetings thus far

By Andrew Kilstrom  
THE DAILY BAROMETER

Coming off a series win against No. 8 Washington and with just four games remaining, Oregon State finds itself ranked No. 1 in the nation for the first time this season. With the sixth-best RPI ranking in the nation and needing just one win in three chances against USC to win the Pac-12, the Beavers (41-9, 22-5 Pac-12) are considered a lock to earn a national seed and home-field advantage throughout the postseason.

OSU has won 14 of its last 15 games and is playing its best baseball of the season. Despite all Oregon State has to be happy about, the Beavers are focused on improving with regionals

less than two weeks away.

Tuesday's nonconference road game against Oregon is an opportunity to get the offense back on track after scoring just six runs on the three games against Washington over the weekend.

The Beavers know complacency can be a season-killer, and they refuse to let their guard down with four regular season games remaining. Head coach Pat Casey said he feels comfortable about his team's chances of hosting an NCAA Regional and Super Regional, but added that his squad can't get ahead of itself.

"We've got four in a row and we want to finish strong," Casey said. "I think we're in really good shape for a national seed. I think our RPI is pretty good, and now we're going to go play on the road at Oregon who's RPI is really good and then against USC that has a solid RPI and is playing very well. We're just going to do what we always do and come out and play the next game and play as well

as we can play."

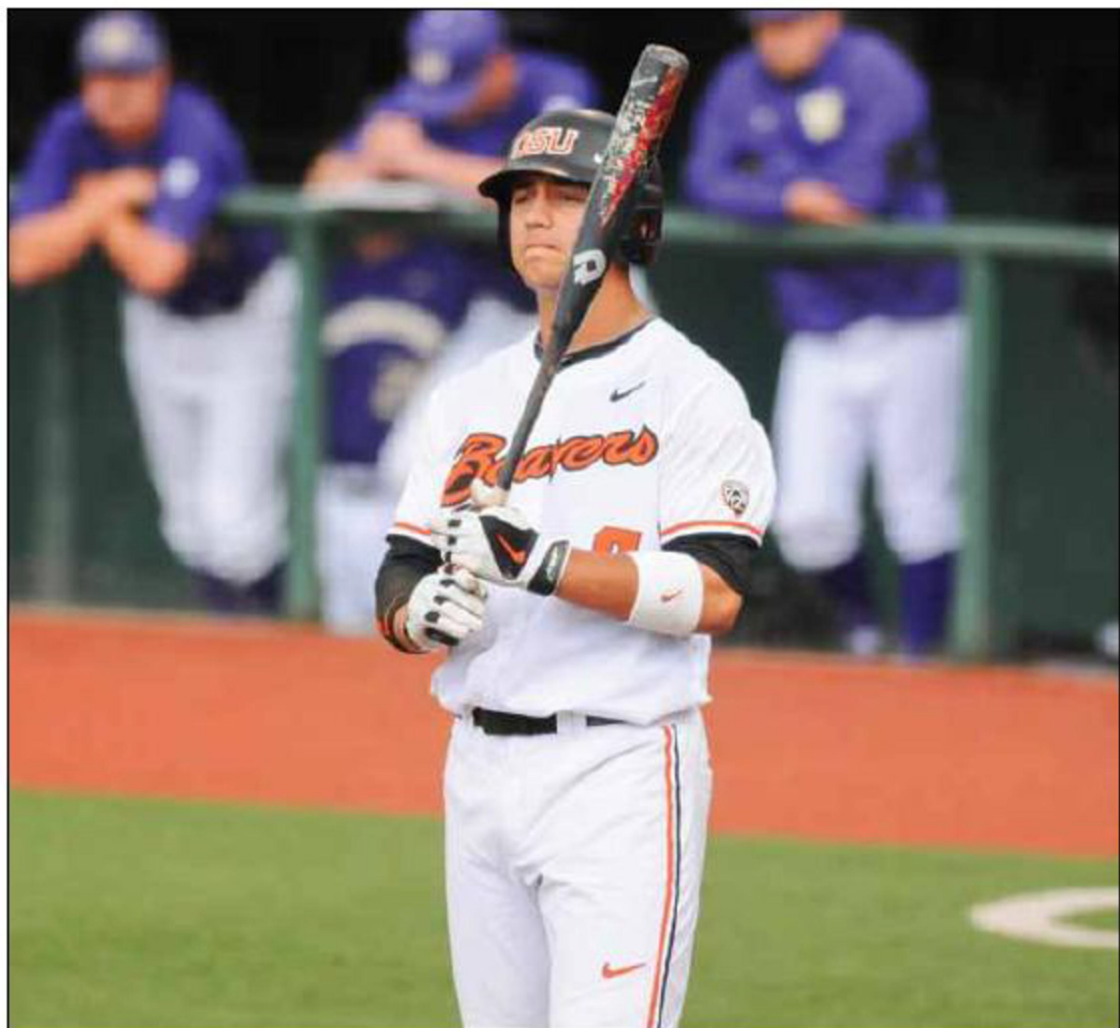
Tuesday's game against the Ducks (40-16, 17-10) will be the fifth meeting of the season between these two.

Oregon State has swept the four games up to this point, but will likely be playing without senior second baseman Andy Peterson for the first time in the season series.

Peterson injured his ankle in Saturday's win against Washington and didn't play Sunday. He was wearing a boot and is listed as day-to-day, according to Casey. He more than likely won't play Tuesday night and there's a chance he won't play this weekend either.

"We did an X-ray and there's no fracture or anything like that," Casey said. "It's a day-to-day thing. We weren't going to play him (Sunday) unless we needed to bunt in the ninth or something. ... We have some of the best trainers working with him, so he's in good hands."

See **BASEBALL** | page 6



JUSTIN QUINN | THE DAILY BAROMETER

Junior left fielder Michael Conforto takes a deep breath before stepping into the batter's box against Washington Sunday in Goss Stadium.

## Oregon State's College World Series dreams depend on starting pitching



JUSTIN QUINN | THE DAILY BAROMETER

Junior left-hander Ben Wetzler releases a pitch against Washington Sunday in Goss Stadium.

The No. 1 Oregon State baseball team has a lot of confidence riding into the final stretch of the regular season. As we have now hit game No. 50, it has become glaringly apparent that the Beavers' (41-9, 22-5) postseason success will come down to the arms of Ben Wetzler, Jace Fry and Andrew Moore.

If OSU wants to claim its third national championship, which is looking more and more attainable than ever, those three are going to have to continue pitching lights out for one more month.

The offense and defense have been serviceable for much of the year, and great at times, but the consistency for both has been lacking.

Wetzler, Moore and Fry have been as consistent as the sun rising in the morning for the Beavers. Moore has been shaky at times — he didn't make it out of the sixth inning Friday — but his 2.94 earned run average over 79 2/3 innings

Warner  
**Strausbaugh**

My Name is My Name



this season is their best-case scenario for a team's clear third-pitcher.

Wetzler and Fry, on the other hand, have been electric on the mound all year.

Wetzler's 0.84 ERA, unsurprisingly, leads the entire nation. Fry still ranks in the top 30 in ERA and has gotten stronger as the season has gone on — his ERA in Pac-12 play is 1.00.

That's two starting pitchers who are allowing one run or fewer per every nine innings in one of the best conferences in baseball.

If the offense gets hot, that will be a huge bonus. The defense playing flawlessly will, too.

But this team's chances of making it to the College World Series in Omaha, Neb., and winning the whole thing are going to come down to Wetzler, Fry and Moore.

Of OSU's 50 games this year, 10 have been decided by one run, and 20 have been decided by three runs or fewer.

The Beavers are 7-3 in one-run games and 15-5 in one-, two- or three-run games.

There can be a lot of factors in winning close games at a good clip that the Beavers have, like the bullpen and offensive performance.

However, in the eight Pac-12 games OSU won by three runs or fewer, the three starters have accounted for 65 1/3 of a possible 72 innings.

Of those eight games, three were complete games — two of which were Fry and Wetzler's complete-game shutouts this past weekend — and only twice did

See **STRAUSBAUGH** | page 6





# Pac-12 baseball power rankings



By Andrew Kilstrom  
THE DAILY BAROMETER

## 1. No. 1 Oregon State (41-9, 22-5 Pac-12)

It was about as good a weekend as the Beavers could have hoped for. Not only did OSU win the long-awaited Pac-12 matchup with the No. 8 Huskies, but the Beavers moved past Virginia for the No. 1 spot in the nation — the first time OSU has been ranked No. 1 since winning the College World Series in 2007 — and is now considered a lock for a national seed, as well. Oregon State has the sixth-best RPI in the nation and needs to win just one of three games against USC this weekend to clinch its second consecutive Pac-12 title. The icing on the cake for the Beavers would be completing a five-game series sweep of Oregon Tuesday, followed by a sweep of the Trojans over the weekend. Having won 14 of 15 games, it's all about finishing the regular season hot for Oregon State at this point.

## 2. No. 8 Washington (38-13-1, 20-7)

This weekend must have been disappointing for the Huskies, but all is certainly not lost. Washington played Oregon State tougher than anyone else this past weekend and truly looked like it belongs in the upper echelon of college baseball. The Huskies will more than likely not get a national seed, but will at least get to host a regional in the postseason. The Huskies should enter the playoffs on a high note, considering the tanking UCLA Bruins are coming to Seattle in the final weekend of the regular season and are set up to make a playoff run. No one should be surprised if Washington actually makes it farther than Oregon State in the postseason.

## 3. Arizona State (30-21, 17-10)

Aaron Fitt of Baseball America said the Sun Devils were safely in the playoffs in his podcast Monday as Arizona State has won six-straight games. ASU took care of business this past weekend, sweeping Utah by a combined score of 30-10 and is tied with Oregon for third place in the Pac-12. Arizona State has won its past three Pac-12 series and has a favorable remaining four games. The Sun Devils host Abilene Christian Tuesday and play three games against Washington State to finish the regular season. At this point, ASU is focused on getting as many wins as possible going into the playoffs.

## 4. Oregon (40-16, 17-10)

It's still hard to imagine that Oregon is sitting at 40 wins with the great pitching it's had and isn't ranked in the top 25. The Ducks haven't played a terribly hard schedule, but 40 wins is always impressive in the Pac-12. At 17-10 in Pac-12 play, Oregon is tied for third with Arizona State and will be playing for third place this weekend. Oregon plays Cal this weekend, which is about the same caliber as Washington State, so it's really a toss up as to which team will finish ahead of the other. What we do know is that Oregon is the fourth Pac-12 team that will play in the postseason with the potential for one more team making it. The Ducks are 7-3 in their last 10 and get a shot at redemption against the Beavers Tuesday.

## 5. Stanford (26-23, 13-14)

Stanford really needed to finish strong over the last 10 games for a shot at the playoffs. The Cardinal won the first two games against Washington State this past weekend, but were hammered, 10-1, in the series finale Sunday. The good news is Stanford finishes the year with four games it will be heavily favored in — one against Pacific and three against Utah — and the Cardinal have a strong RPI because of the brutal schedule they played early in the year. Stanford is currently tied for sixth in the Pac-12 with

WSU, and is just a game back of USC. Considering the Trojans face OSU in the final week, Stanford is probably the favorite to finish fifth. The Cardinal have to like their playoff hopes with just four games remaining.

## 6. USC (26-22, 14-13)

At this point, USC probably won't make the postseason, but if the Trojans can muster a series win against Oregon State, they'll have a puncher's chance. If USC can hold on to fifth place, it could take that fifth playoff spot, which I think the Pac-12 will get. The conference is down from years past, but is still considered a premiere conference in college baseball. The Trojans aren't playing their best baseball, having lost five of their last seven since a nine-game winning streak, but have a chance to turn things around with five games left. USC plays Grand Canyon and Cal State Fullerton before its three-game series with OSU to finish the year.

## 7. California (23-26, 11-16)

The Golden Bears are essentially locked into the eighth spot in the Pac-12 standings, but did win two of three games against Arizona this past weekend. Cal has actually been decent of late, having won its past two Pac-12 series. It's also worth noting the Golden Bears played the most exciting conference game of the weekend, knocking the Wildcats, 7-6, via a walk-off in the 12th inning. Cal finishes the year at San Francisco and at Oregon for three games.

## 8. Washington State (23-27, 13-14)

The Cougars lost two of three to Stanford over the weekend, but are still tied for sixth in the Pac-12 standings. Washington State isn't going to play in the postseason, but could throw a wrench in Arizona State's momentum in its last three games of the season. Washington State plays at Seattle and hosts the Sun Devils to finish the year.

## 9. Arizona (20-32, 9-21)

The Wildcats lost two of three games at Cal and have finished their Pac-12 schedule. Their season has to be viewed as a disappointment as they're now locked into a 10th-place conference finish. Arizona has gone just 3-15 over the past 18 games. Arizona plays three winnable games against Abilene Christian to finish its season, but is just as likely to lose all three at this point.

## 10. Utah (16-33, 4-23)

The Utes would once again be last in my power rankings if it weren't for how bad the Bruins are playing. It's pretty sad to consider that Utah is 3-7 in its last 10 games and it probably should be considered a decent stretch for the Pac-12's newest team. The Utes have allowed an abysmal 82 runs in their past 10 games and finish the season out with a three-game set against red-hot Stanford. They're also locked into last place in the Pac-12 standings.

## 11. UCLA (23-29-1, 10-17)

It's hard to believe, but the defending national champions are currently in the midst of a 10-game losing streak. While all three games against Oregon this past weekend were close, UCLA couldn't find a way to get it done, and lost all three. Considering the Bruins have to finish the year at Washington, there's a great chance they'll finish the season losers of 13 in a row. Ouch.

Andrew Kilstrom, sports editor  
On Twitter @AndrewKilstrom  
sports@dailybarometer.com

# Wetzler named Pac-12 Pitcher of the Week

Senior Ben Wetzler given weekly Pac-12 honor for 1st time in his 4-year career

THE DAILY BAROMETER

Oregon State senior pitcher Ben Wetzler was named the Pac-12 Pitcher of the Week Monday, a day after tossing a complete-game shutout against No. 8 Washington.

Wetzler allowed just two hits and two walks, and didn't allow a base runner to get past first base in his 10th win of the season. He lowered his earned run average to 0.84 (best in the nation) in the process.

Batters are hitting just .146 against him (first in the nation) and his WHIP is down to 0.78 (third in the nation) following the win.

It's the first weekly honor of Wetzler's career and comes on the heels of a victory that gave OSU a two-game advantage over the Huskies in the Pac-12 standings with just three conference games remaining.

The pitching honor is the fourth of the season for Oregon State, which ties the program's previous best for a season in 2010.

Oregon State is back in action for a nonconference matchup against the University of Oregon. First pitch is scheduled for 7 p.m. in PK Park in Eugene.



Wetzler

The Daily Barometer  
On Twitter @barosports  
sports@dailybarometer.com

# Seumalo on Rimington Trophy Spring Watch List

Oregon State junior offensive lineman Isaac Seumalo named to list of nation's top center nominees

THE DAILY BAROMETER

Oregon State center Isaac Seumalo was named to the Rimington Trophy Spring Watch List Monday. The junior is one of 64 nominees honoring college football's best center.

Seumalo has started all 25 games he's played in his two-year career and was recently voted as one of four team captains for the 2014 football season.

The winner will be recognized at the Rimington Trophy Presentation at the Rocco Theatre in Lincoln, Neb., on Jan. 17, 2015, following the conclusion of the season.

Oregon State, meanwhile, returns to action for the start of fall camp Aug. 4. The Beavers' season opener is set for Aug. 30 against Portland State in Reser Stadium.

Seumalo missed the spring with a foot injury, but is expected to be healthy for the start of fall camp.



Seumalo

The Daily Barometer  
On Twitter @barosports  
sports@dailybarometer.com

## BASEBALL

Continued from page 5

Senior first baseman Kevin Keyes, meanwhile, still hasn't returned to the lineup since injuring his thumb April 13. Keyes said he had hoped to return this past weekend against Washington at Wednesday's practice, but that he was confident he would at least be back for the USC series.

His status for Tuesday's game is still up in the air, and Casey hasn't decided to what capacity he'll use his most experienced player when he is fully healthy.

Another question mark is who will start on the mound for the Beavers against the Ducks. Junior Dylan Davis pitched the first two innings in the last meeting May 6 — allowing two runs — and started OSU's last nonconference game against the University of Portland, throwing five scoreless innings.

Freshman Jake Thompson is the other likely candidate to start Tuesday. Regardless of who's on the mound, OSU is confident in its staff. The bats went cold over the weekend, but the pitching staff didn't allow a run in the last 19 innings of the Washington series.

Senior Ben Wetzler said both the starting rotation and bullpen



JUSTIN QUINN | THE DAILY BAROMETER

Junior Jerad Casper walks toward the dugout after striking out against Washington Sunday. OSU managed just six runs combined over the three games.

are feeling as good as they have all season.

"We set the tone and we know this team wins on pitching and defense," Wetzler said. "We know our job is to keep zeros on the board as long as we can until our offense breaks through."

The left-hander also said that nobody is worried about the offense. Despite scoring just six runs in the three-game series, the Beavers have four more games to work out any kinks before the postseason.

Now, it's just about putting everything together before making a run toward the CollegeWorld Series.

"We just have to take care of business," Wetzler said. "Tuesday against Oregon is going to be a business trip. We know how important playing your best is at this point in the season."

First pitch is scheduled for 7 p.m. Tuesday in Eugene.

Andrew Kilstrom, sports editor  
On Twitter @AndrewKilstrom  
sports@dailybarometer.com

## STRAUSBAUGH

Continued from page 5

a starter not pitch at least eight innings.

This eight-game sample also comes exclusively in Pac-12 play. Close games against a conference opponent are the closest evaluator there is to com-



JUSTIN QUINN | THE DAILY BAROMETER

Junior Jace Fry winds up against Stanford April 6 in Goss Stadium.

pare to NCAA Regionals, Super Regionals and the College World Series.

This sample has shown that head coach Pat Casey is extremely trusting in his starters, and is reluctant to ever use the bullpen.

In all eight Pac-12 games the Beavers won by three runs or fewer, the starter went at least 110 pitches. The bullpen was used only when it was evident that the starter could not carry on for much longer.

It's not that the bullpen is poor, it's just not anywhere near the as capable as Wetzler, Fry and Moore.

Things get tricky in the postseason, with regionals and the CWS being a double-elimination format that could demand a team to play between three and eight games over a short period of time.

The Beavers are stacked, there's no denying that. We've seen the offense shine for stretches, but when they face quality pitching, the games are staying alarmingly close.

Casey has ridden the arms of Wetzler, Fry and Moore all year and will continue to do so for as long as he can. The three are dominant, and much of the nation has had trouble producing multiple hits against them, let alone runs.

The three should be able to carry OSU to Omaha. How far they get in the CWS will rest on their shoulders.

Warner Strausbaugh, editor-in-chief  
On Twitter @WStrausbaugh  
editor@dailybarometer.com





Gabi Scottaline

## Spelling is difficult but necessary skill

Spelling is the bane of my existence. Its wizardly ways astound and frustrate me in equal measure. One moment "C's" have the "S" sound and the next they have a harsh "K" sound. And what's up with necessary? Why can't all the "S"-sounding letters be "S's"? Spell check still needs to correct me on that one, even though I sat down one day and wrote it out 20 times so I could memorize it.

Don't even get me started on that little mnemonic we were taught as kids, "I before E, except after C." That rule applies less than it actually does. Except nothing. Exhibit A: weird, their, eight, protein and the list goes on.

It probably doesn't help that the English language is a collage of many other languages. There's just so much going on that spelling will never be an easy task. Believe me, I'd like to blame our faulty public school systems — which I still do, a little — but we can't overlook the fact that English, when spoken and spelled properly, is a difficult language to master.

Learning a second language with English as your primary must be a nightmare. Sometimes English spellings will match other languages' conventions, but other times it just doesn't, and for no good reason.

That being said, I do believe we have the ability to become better spellers. I say that in part to tell myself that it will all be OK. To borrow a Dave-ism from "Hot Rod," you can only achieve if you wish to believe.

A few things must be understood before we either condemn ourselves for not being able to spell well or give up trying all together.

There are 26 letters in the English language, which is highly disproportionate to our 44 sounds. Therefore, "sound it out" is not really useful advice, now is it? Phonics are important, but they're not everything.

Cognitive thinking must be employed, which ties closely to phonics and morphemes. "When attempting to spell a word, the first question we should teach children to ask is not 'what sounds can I hear?' but 'what does this word mean?'" writes Misty Adoniou in her article, "Why some kids can't spell and why spelling tests won't help."

Visualizing words and making connections in that way can help the retention process of spelling. If it helps, you can even write it 20 million times if you have to. But that's not really necessary. (Get it? Har har.)

If you really want to be proactive about becoming a better speller, there are a number of things you can do, including: reading, playing word games, you can even try writing the harder ones down a few times, allowing muscle memory to lend a hand. In reality, I do believe that method helps.

Just remember not to get too down about it. Being a proficient speller is hard, but ultimately worth the time and effort.

Gabi Scottaline is a senior in English. The opinions expressed in Scottaline's columns do not necessarily represent those of The Daily Barometer staff. Scottaline can be reached at forum@dailybarometer.com.

## Letters

Letters to the editor are welcomed and will be printed on a first-received basis. Letters must be 300 words or fewer and include the author's signature, academic major, class standing or job title, department name and phone number. Authors of e-mailed letters will receive a reply for the purpose of verification. Letters are subject to editing for space and clarity. The Daily Barometer reserves the right to refuse publication of any submissions.

The Daily Barometer  
c/o Letters to the editor  
Memorial Union East 106  
Oregon State University  
Corvallis, OR 97331-1617

or e-mail: editor@dailybarometer.com

# Marriage for all, all for marriage

## Editorial

We spent Monday glued to our smartphones and computers, waiting to hear the verdict and hoping we'd get to witness Oregon history being made.

It was almost like the day needed a dramatic score to back its ups and downs.

At roughly 9 a.m., we found out that the National Organization for Marriage — the Washington, D.C., group whose defense of Measure 36 Judge Michael McShane was denied Wednesday — filed an emergency motion with the Ninth Circuit Court requesting a stay on Oregon's marriage ban. They were apparently appalled when they heard the rumor that Oregon was ready to put whatever McShane decided into immediate effect rather than appealing the decision and sending the case to a higher court.

We lingered in suspense until 11:21 a.m., when a mass-texted update from Oregon United for Marriage relieved our fears with the text, "Ninth Circuit Court denies NOM's request to stay district court proceedings."

That was the climax of the second act to our day, complete with celebration — and the inevitable subsequent realization that the war was not yet won, even if a battle had been.

The 40-or-so minutes between then and the posting of McShane's ruling were grueling, filled with "what ifs," nail-biting and the wringing of hands. But a little after noon, we got OUM's mass text, letting us know Oregon's marriage ban was officially ruled unconstitutional.

We were thrilled, and immediately tracked down the ruling to read it ourselves. McShane made a logical, well-thought-out and fact-based decision,

and backed it up with facts, quotes and legal precedent.

After reading it, we thought about applying to law school — almost. We also wish he wrote for us, since his ruling was deliciously and subtly snarky, as well as well-researched and well-sourced.

Within his ruling, he made the excellent point that "this case deals with civil marriage. ... Overturning the discriminatory marriage laws will not upset Oregonians' religious beliefs and freedoms."

The justifications for Measure 36 were that it protected the "traditional" definitions of marriage, protected children (from the evil gays? We're not entirely sure what exactly it protected them from) and encouraged stable families. McShane's response to the "tradition" defense was that, "If tradition alone was sufficient to withstand rational basis review, the right to equal protection would be quite hollow."

But his reply to the "protecting children and encouraging stable families" justification was glorious.

"Although the state has a legitimate interest in promoting stable families, its interest does not stop with families of opposite-gender couples. By enabling gay and lesbian couples to enter domestic partnerships, the state acknowledged the value and importance such families can provide," he wrote. "Yet, because the state is unable to extend to opposite-gender relationships the full rights, benefits and responsibilities of marriage, it is forced to burden, demean and harm gay and lesbian couples and their families

so long as its current marriage laws stand.

And in response to the potential argument that "the state's interest in responsible procreation supports same-gender marriage bans," his reply was, "Procreative potential is not a marriage prerequisite. ... There is no prohibition to marriage as to sterile or infertile persons, or upon couples who have no desire to have children."

But the best part of his ruling was the part that read, "Nothing in this court's opinion today will effect the miracle of birth, accidental or otherwise. A couple who has had an unplanned child has, by definition, given little thought to the outcome of their actions. The fact that their lesbian neighbors got married in the month prior to conception seems of little import to the stork that is flying their way."

In his conclusion, McShane stated, "At the core of the Equal Protection Clause, however, there exists a foundational belief that certain rights should be shielded from the barking crowds; that certain rights are subject to ownership by all and not the stake hold of popular trend or shifting majorities."

Marriage is now one of those rights "subject to ownership by all" in the state of Oregon, and Benton County began issuing marriage licenses within an hour of the dissemination of the ruling Monday.

The anticipation all day Monday is over. The anticipation for nearly a decade since Measure 36 passed is over. Finally, we can be proud of our state.

Editorials serve as means for Barometer editors to offer commentary and opinions on issues both global and local, grand in scale or diminutive. The views expressed here are a reflection of the editorial board's majority.

## Letters to the Editor

### Regarding ASOSU's 'We Don't Say' campaign We don't say free speech either

I was disappointed, but not surprised (which is sad), to see the half-page ad by the Associated Students of Oregon State University in Thursday's edition of the Barometer, admonishing readers not to use the phrase "man up."

ASOSU represents student government at Oregon State University. They have no business, just as the U.S. government has no business, attempting to regulate speech.

There are certain restrictions on the First Amendment to the U.S. Constitution, but this is a far cry from yelling "fire" in a crowded theater. It is political correctness run amok. College students in my generation fought for free, unfettered speech and some paid a high price (Kent State). This is the legacy?

To make a declarative statement like "we don't say that here" with the stated purpose to "initiate a campus dialogue" is both ironic and moronic. To quote one of my favorite cartoon characters, (Bucky the Cat in "Get Fuzzy") "the sad kills the funny."

Limiting speech is no way to initiate dialogue. If we allow ourselves to be bullied in this way, we deserve what we get. I imagine at some point we will all be issued an OSU handbook of words/phrases that are "discouraged" on campus. George Carlin is rolling over laughing in his grave (kids, ask your folks about the reference).

DAVID E. WILLIAMS  
Professor of environmental and molecular toxicology

### Regarding the Arts & Entertainment section Not local enough, missing out on student art

Let me start by saying we at KBVR-FM love you. We love how you have a fabulous Arts & Entertainment section that keeps Oregon State University up to date on new TV, movie and music releases. We especially love how you let us contribute to the Arts & Entertainment section with our local music and live performance reviews. It's a beautiful relationship for which we are incredibly grateful.

But while we have a fantastic relationship, we feel kind of bummed. We know you focus a lot of energy on musical arts — almost every Tuesday's A&E section has a music review, and you've asked KBVR-FM to focus in on local performance every time we submit. But a lot of the section focuses on non-local art — cable TV show reviews, for example, or critiques on superhero movies.

My thinking is, there's a lot of great student art to review. You know this — you demonstrated it in your columns, "KBVR-TV's 'How We Did It' a must-see" and "Corvallis' local student artists featured at Festival Poetics during Mom's Weekend."

My humble request: more. New student exhibits appear in Fairbanks Hall every couple weeks, yet receive little attention from their student newspaper. Cultural centers frequently host art projects and performances that go unnoticed. Student film work that debuts in campus events goes unreported.

Your TV and movie reviews are witty and informative, but we can find reviews of the same shows and movies in national papers and magazines. The Daily Barometer is uniquely poised to break news about OSU's amazing student talent and connect peers with local art. I request that you seize that opportunity. OSU students have amazing talent, and it's important that it be disseminated university-wide.

JODIE DAVAZ  
KBVR FM Station Manager  
Junior, Digital Communication Arts

## A+ Random by Ryan Mason



www.AtRandomComics.com

RYAN MASON IS A JUNIOR IN GRAPHIC DESIGN



# Arts & Entertainment

## 'Mad Men' returns to its glory days in Sunday's episode

When reviewing "Mad Men," a period piece that takes place in the 1960s, it is easy to throw around the term "vintage." The way people dress, talk, look and act is all vintage.

But within the scope of the actual series, the direction that the characters have gone is anything but vintage.

The audience is navigating the decade through the lenses of these characters, and their development has been progressive during the past seven seasons. (Except for Betty Draper/Francis, of course, who has been stuck in the 1950s this entire time.)

For the first time since season three, which I watched when I was in high school, "Mad Men" felt vintage.

**This column contains spoilers for "Mad Men."**

In Sunday night's episode, "The Strategy," we were able to see the return, both geographically and interpersonally, of Don Draper and Pete Campbell.

With all the dramatic changes that have taken place in Sterling Cooper's makeup, it's easy to forget about what originally made "Mad Men" so compelling.

The first few seasons focus on a select few — their relationships with each other, with their families and with their clients.

Some of the show's best early moments come between Don, Pete and Peggy Olson. The way their work and home lives inter-

weave with each other, for good or bad, is what made the few who watched the show in its early days eager for more.

Those three have always been the most interesting characters, but the show went away from them in order to expand on the 1960s as a character itself. We saw the decade take over the show and do its part as a looming figure over everyone's lives.

The show got away from what worked as soon as they merged, and then merged again. It still had its moments, but it did not have the same feel as it did before.

"Mad Men" has never been an exciting show — in fact, most people our age who do watch it call it boring. That is one of the ironies of the show, because college students are exposed to everything and cannot sit still without technology at their fingertips.

For those lucky few who have watched "Mad Men" since the beginning, "The Strategy" brought back that organic chemistry and character development.

Back in season one, the dynamic between Don, Pete and Peggy was captivating. Through those relationships, we also uncovered Don's clouded past, Peggy's love for Pete and the one truly progressive male-female relationship in the show

between Don and Peggy.

The last of those three is what is illuminated so well in Sunday's episode. Peggy always strove to be like Don (at least to be like Don in the workplace). There were times when she hated him and was disgusted with his actions, but she still always idolized him as a copywriter and a salesman.

When Peggy approaches Don to unveil his methodology as a genius in advertising, it is the first time the two have ever had that conversation, and its candidness make it a uniquely profound scene.

As we arrive at the final scene of the episode, with Don, Pete and Peggy sitting at a Burger Chef table, their most recently courted client, it is a culmination of years of those three loving and hating each other.

Peggy's brilliant pitch, that the table at a fast-food restaurant is the only place that "family" could be achieved, is also a metaphor for the relationship between those three and the rest of the original crew at Sterling Cooper.

They have gone through so many changes, both small and dramatic, that they have lost the feeling of any real compatibility with each other. Don, Pete and

Peggy have also never had anything close to the American Dream of a family.

Don and Pete are both divorced and have been mostly miserable for the entirety of this series. Peggy has not been able to sustain a healthy romantic relationship, and has been stuck in purgatory between the girls and boys of the office, and has never felt included.

The mothers in the show feel embarrassed when they buy Burger Chef for their families, but it still remains an easy and convenient solution.

As Peggy's ad campaign says, it is the only place in the world left that people can convene and feel like a family. Every table at Burger Chef is the family table.

Don, Pete and Peggy were a family, even if it was just for a moment. It could have been the series finale and I would have been satisfied, but since it isn't, I can hope that we see these three on camera at the same time as often as possible for the series' remaining eight episodes.

It has been eight years since "Mad Men" originally aired, and those three have carried the show. It only makes sense for them to carry it to its final breath.

Warner Strausbaugh, editor-in-chief

On Twitter @WStrausbaugh  
editor@dailybarometer.com



Bad Reception  
with Warner Strausbaugh

## Prism art and literary magazine will be on stage Thursday

Oregon State University's Prism art and literary magazine is gearing up for its big event of the year. That's right — the 2013-14 Contributors' Showcase is looming just around the corner.

This is that special time of spring term during which the Prism community gets together and celebrates the artists and writers it published during the academic year. You'll have the opportunity to see work that was featured on the glossy pages of Prism up close and personal, as well as the artists themselves. Gabe Wigtil,

Megan Haverman

### Prism Magazine

Evelyn Kritler, Jerome Stretch and Allison Yano are just a few of the artists that will be featured in this year's showcase.

In addition to the gallery, some of Prism's poets and writers have committed to reading their work for an audience. Cassie Ruud, Collin Cole, Melina Ford and Shadi Taha are just a few of the writers who have signed up to read their work during the showcase. Festivities will also include

Q&A sessions with our cover artists emceed by Prism's editor-in-chief (me).

If that's not enough to get you excited, we'll be previewing some of spring term's newly chosen contributors before the magazine drops in the fall. You'll hear from Prism's fresh faces and gain access to our awesome new art.

Prism's community arts initiative makes us a resource for engaging with campus-wide

visual and literary art, especially for those who don't usually find themselves interested in art. Our event is a time to come try something new; to see the myriad inventive ways others express themselves and to be inspired by OSU.

Ours is an atmosphere of spoken word and upbeat conversation. We plan on having a good time, and we'd like you to join us. This is a great way to get to know some of the up-and-comers in our artistic community, as well as to support some of your fellow Beavers in the time of their success.

The Contributor's Showcase

will be held in the MU Ballroom Thursday, and will start at 4 p.m. We'll be previewing in the MU quad at 2 p.m., so make sure to swing by and grab a hand-made invite from winter cover artist Ethan Stewardson-Blackwell.

For more information about the event, check out the Prism Facebook page. We're looking forward to sharing our stuff with you, and commemorating another stellar year of student-created art and literature.

Megan Haverman, Prism editor-in-chief  
prism@oregonstate.edu

## 'Godzilla' never gone for long

I've always had a soft spot in my heart for 1998's "Godzilla" — it's one of the first movies that I can remember seeing as a child. However, I do recognize that in reality it is a really bad movie.

With last week's release of the most recent reboot of the "Godzilla" series, Hollywood is finally giving the monster the movie it deserves.

Director Gareth Edwards takes the story to a much more serious level than its predecessor, with no corny jokes or lines that sound like they should be uttered by Arnold Schwarzenegger's Mr. Freeze.

We start out in Japan in 1999, and are introduced to Joe Brody (Bryan Cranston), his wife Sandra (Juliette Binoche), and his young son Ford (played by Aaron Taylor-Johnson as an adult). Joe and Sandra are scientists at a local nuclear factory when a series of tremors destroy the plant, along with many workers.

Fast-forward 15 years, and we see Ford as an adult with a wife, Elle (Elizabeth Olson, sister of the Olson twins), and young son.

Then there is Dr. Ichiro Serizawa (Ken Watanabe), who is trying to figure out what exactly Godzilla is, and what is going on with MUTO, the recently unleashed monster that is on a streak of terror.

An interesting thing about the movie is the tension that is built up by being deprived of seeing Godzilla for so long. It takes about an hour until we finally get to see the monster in its full glory.

This is one of the triumphs of the film, though. First, it makes you appreciate the main plot more, rather than just trying to



Derek Saling

please you with visuals (see: "Transformers").

Second, by giving tantalizing glimpses throughout the first hour, finally seeing the monster is extremely exciting.

The look of Godzilla the monster returns much truer to form than the 1998 version, which looked like a big blue Velociraptor. As well as looking like the classic Godzilla, this new version is huge, not only in height, but in girth.

Throughout a lot of the scenes in which we see the monsters in battle, the view is from the perspective of the people on the ground, which makes the monsters seem even bigger.

There are a few parts that are pretty corny, but I have yet to see a blockbuster action movie that has none. Another disappointment is that Taylor-Johnson is fairly bland, and doesn't bring much to the role.

I liked the origin story Godzilla has in this one, which strays from the traditional "mutation as a result of post-WWII nuclear bomb tests." Instead, in this one, those bomb tests were actually the past's attempts to kill the long-lived monster, which obviously failed.

"Godzilla" is by no means going to be taking home any Oscars, but it is definitely bounds ahead of its 1998 forerunner.

Derek Saling, A&E writer  
forum@dailybarometer.com



COURTESY OF WARNER BROS.

CORVALLIS PREVIEWS  
THE FOLLOWING PREVIEWS HAVE BEEN  
APPROVED FOR ALL COLLEGE STUDENTS

### Rebecca McDade at Cloud and Kelly's

Rebecca McDade will perform at Cloud and Kelly's on Tuesday at 7 p.m.

### Prism's 2013-14 Contributors' Showcase

See work featured in Prism live, and talk to the artists. Hear writers read their work aloud. Attend panels with Prism's cover artists. See advance previews of the spring term issue of the magazine.

Admission is free. It's all going down in the MU ballroom Thursday at 4 p.m.

### Masque & Dagger presents the 'Insta-play'

OSU's theatre club, Masque & Dagger, will host an all-day event, "Insta-play," on Saturday.

During the Insta-play, participants will write, direct and rehearse a play in less than 24 hours.

Actors, writers and directors are all needed, but no experience is necessary. Everyone is invited: students, friends, family, neighbors, innocent bystanders, etc.

This event is organized entirely by students.

For anyone who wants to participate, the pre-event meeting will be at 7 p.m. on Friday in Withycombe Hall's lab theater.

The event itself will take place Saturday and will begin at 9 a.m. and end at roughly 9 p.m.

If you don't have 12 hours to waste, but still want to join in on the fun, the performance will take place Saturday at 7 p.m. in Withycombe Hall's lab theater.

### OSU Theatre presents the Spring One-Act Festival

The Spring One-Act Festival is coming, so mark your calendars.

Featuring the directing efforts of the Oregon State University Theatre Program's advanced directing students, this student-directed plethora of plays will hit the stage June 4-7 at 7:30 p.m., with a matinee June 8 at 2 p.m.

Tickets for the Spring One-Act Festival are \$12 for general admission, \$10 for seniors, \$8 for youths and students, and \$5 for OSU students, and are available for purchase at the box office in Withycombe Hall, over the phone by calling 541-737-2784, as well as online.